

***Report and Index of
Underway Marine Geophysical Data***

La Perouse Expedition

Leg 7

(LPRS07RR)

R/V Revelle

(Issued November 2002)

Ports:

Honolulu, Hawaii (24 October 2002)
to
San Diego, California (04 November 2002)

Chief Scientist: Peter Lonsdale
Scripps Institution of Oceanography
plonsdale@ucsd.edu

Computer Tech - Steve Foley; Barry Quiel
Resident Tech - Bob Wilson; Adam Willingham

Post-Cruise processing and report preparation by the
Shipboard Technical Support Group,
Scripps Institution of Oceanography
La Jolla, CA 92093-0223

NOTE: This is an index of underway geophysical data edited and processed after the completion of the cruise leg and is intended primarily for informal use within the institution. This document is not to be reproduced or distributed outside Scripps without prior approval of the chief scientist or Shipboard Technical Support, Scripps Institution of Oceanography, La Jolla, California 92093-0223.

STS Cruise ID# 298

**Report and Index of Navigation
and Underway Geophysical Data**

Processed by the Shipboard Technical Support Group
Scripps Institution of Oceanography

Contents:

Index Chart - gives track of cruise leg, dates, ports, and mileage of each type of data collected.

Track Charts- annotated with dates and hour ticks

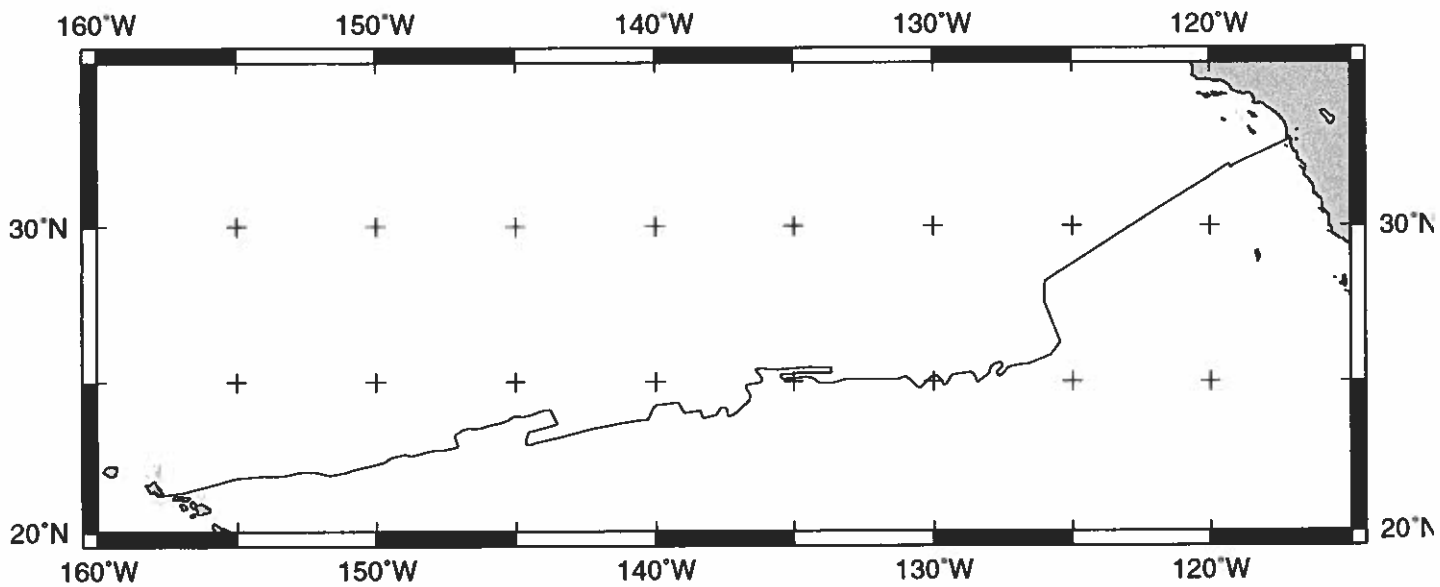
Profiles - depth, magnetic and gravity free air anomaly vs. distance. (Sections of track with seismic reflection data have a wide black line along the bottom of the profile.)

Sample Index - list of begin/end times and positions of all underway records as well as samples and measurements from other disciplines collected on the leg.

NOTE:

For information on the availability of this current digital data as well as archived digital data contact Stephen P. Miller, Geological Data Center, Scripps Institution of Oceanography, La Jolla, California 92093-0220 Phone: (858)534-1898, internet email: spmiller@ucsd.edu; or his Website: <http://SIOExplorer@ucsd.edu>

Rev 6/2001



LAPEROUSE EXPEDITION LEG 7 (LPRS07RR)

=====

CHIEF SCIENTIST: Peter Lonsdale, Scripps Institution

PORTS: Honolulu, Hawaii - San Diego, California

DATES: 24 October - 04 November 2002

SHIP: R/V Revelle

TOTAL MILEAGE OF UNDERWAY DATA COLLECTED

Cruise-3168 miles

Magnetics-2910 miles

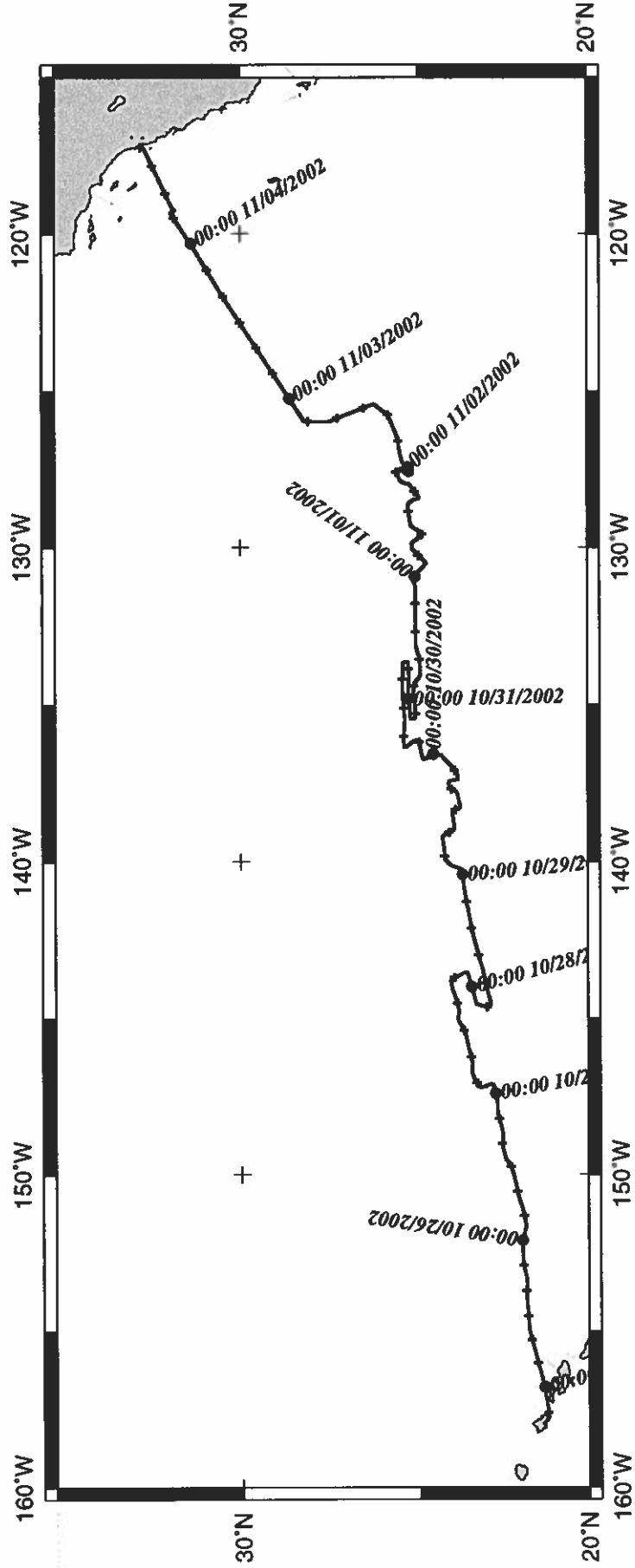
Bathymetry-3141 miles

Seismic Reflection-none collected

Multibeam-3141 miles

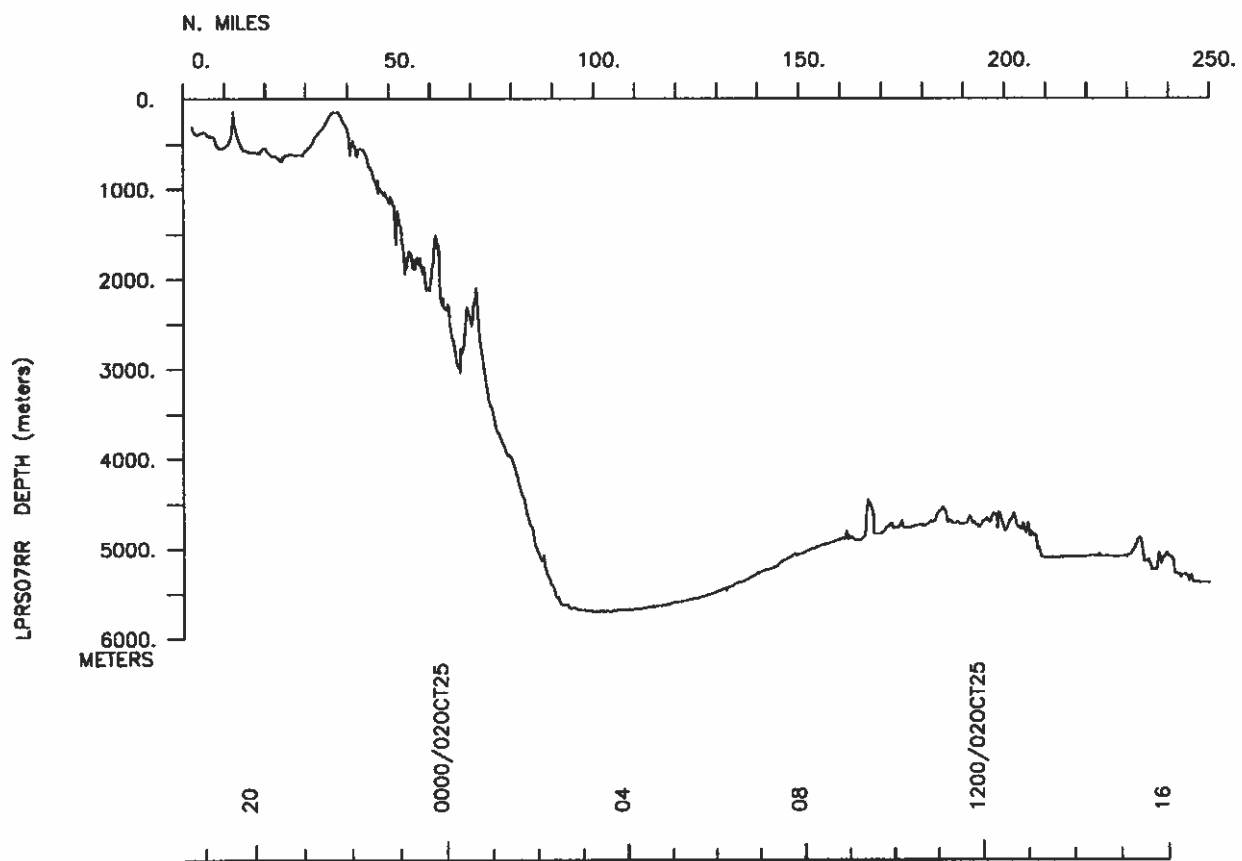
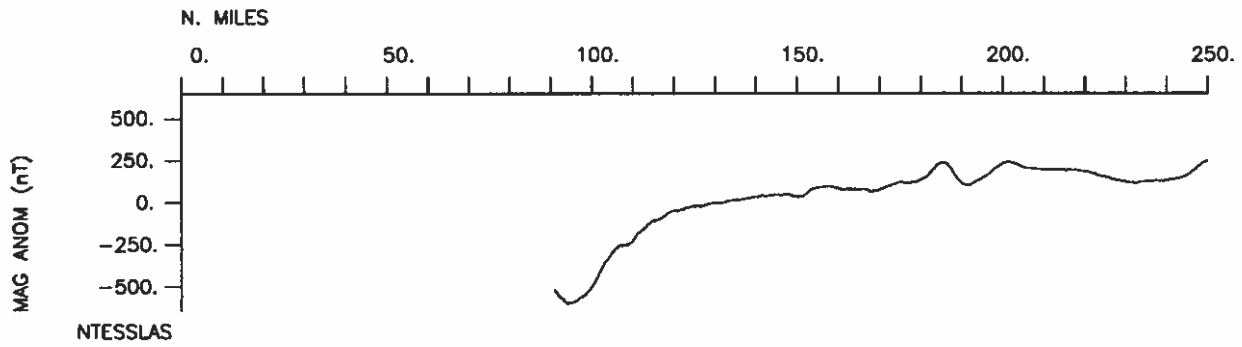
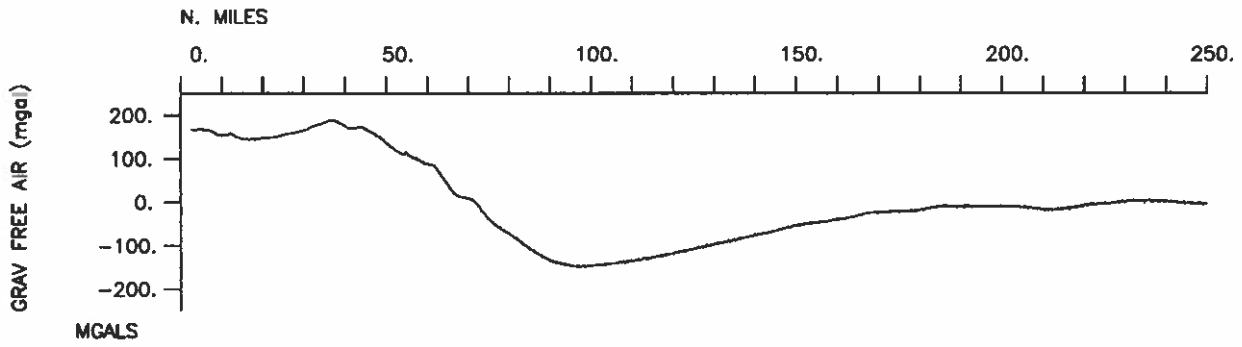
Gravity-3160 miles

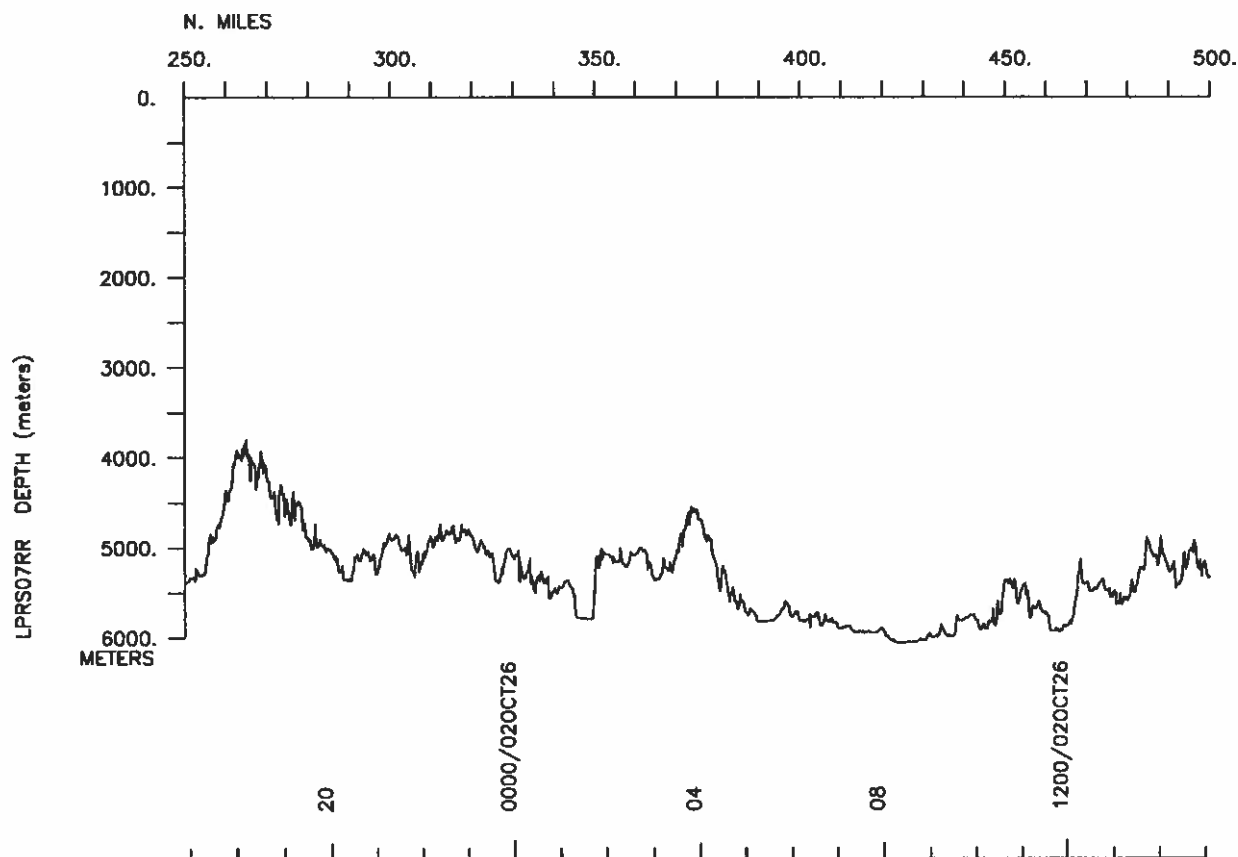
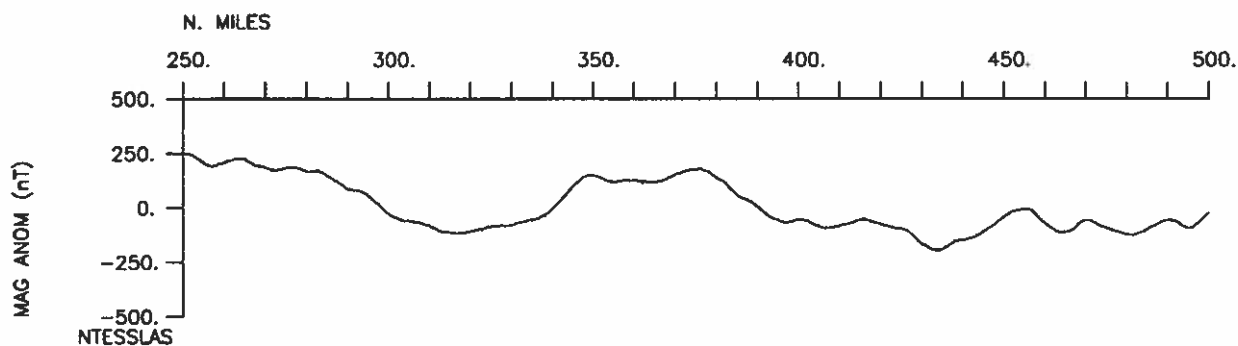
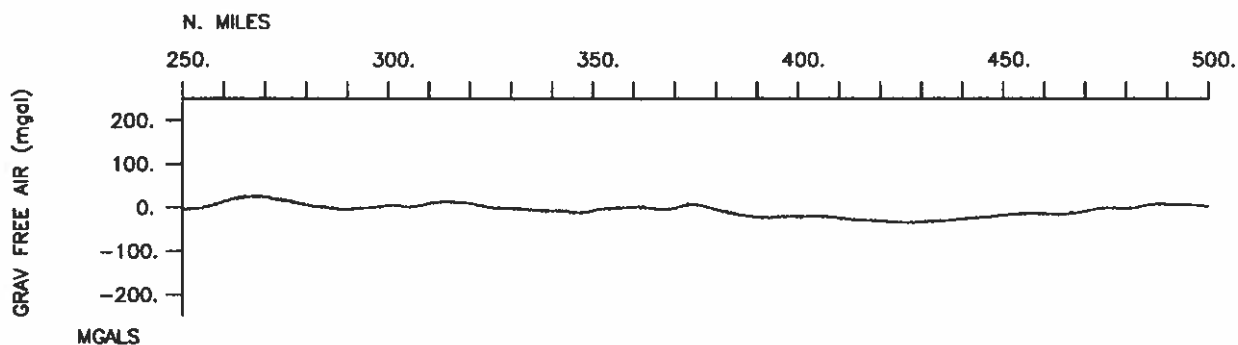
LPRS07RR

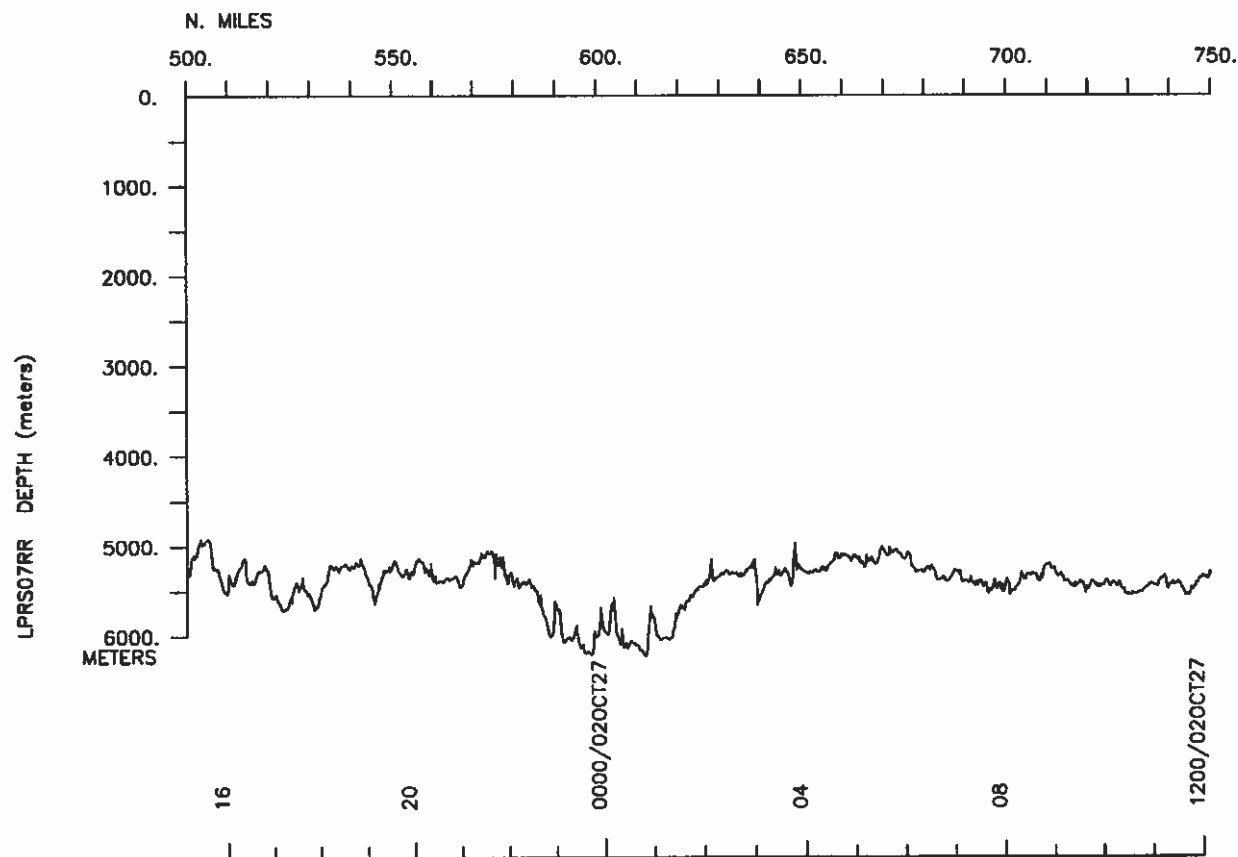
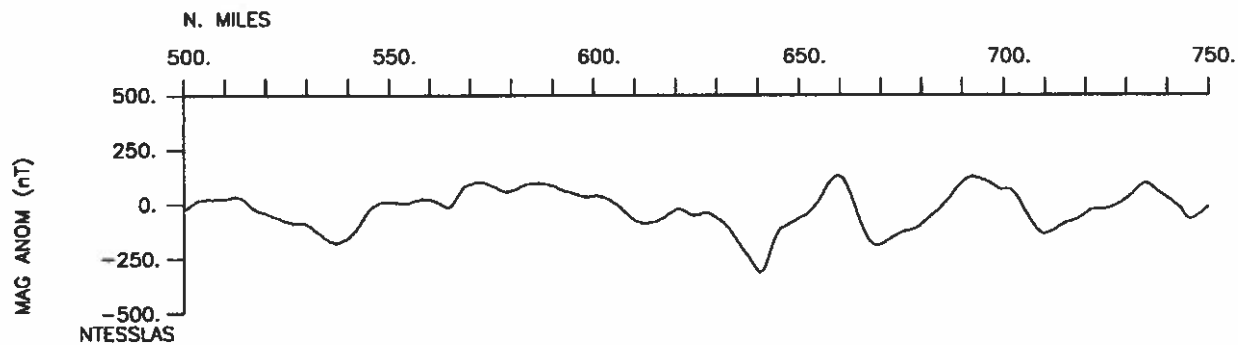
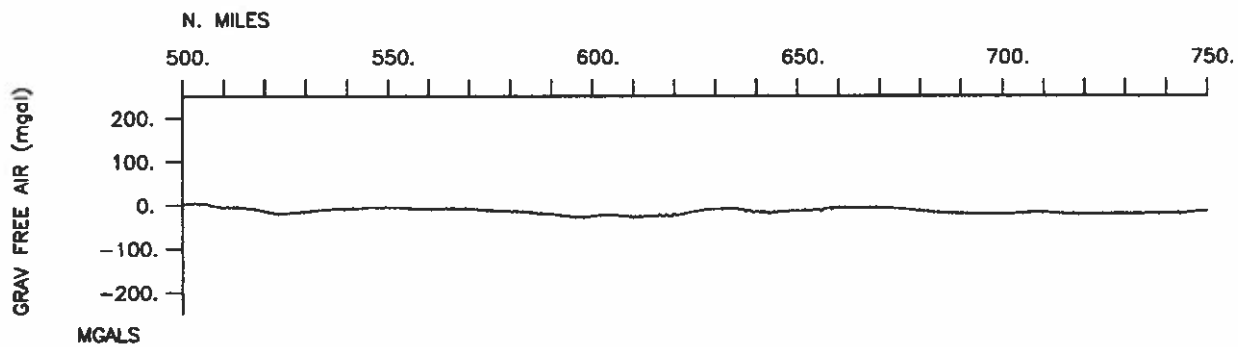


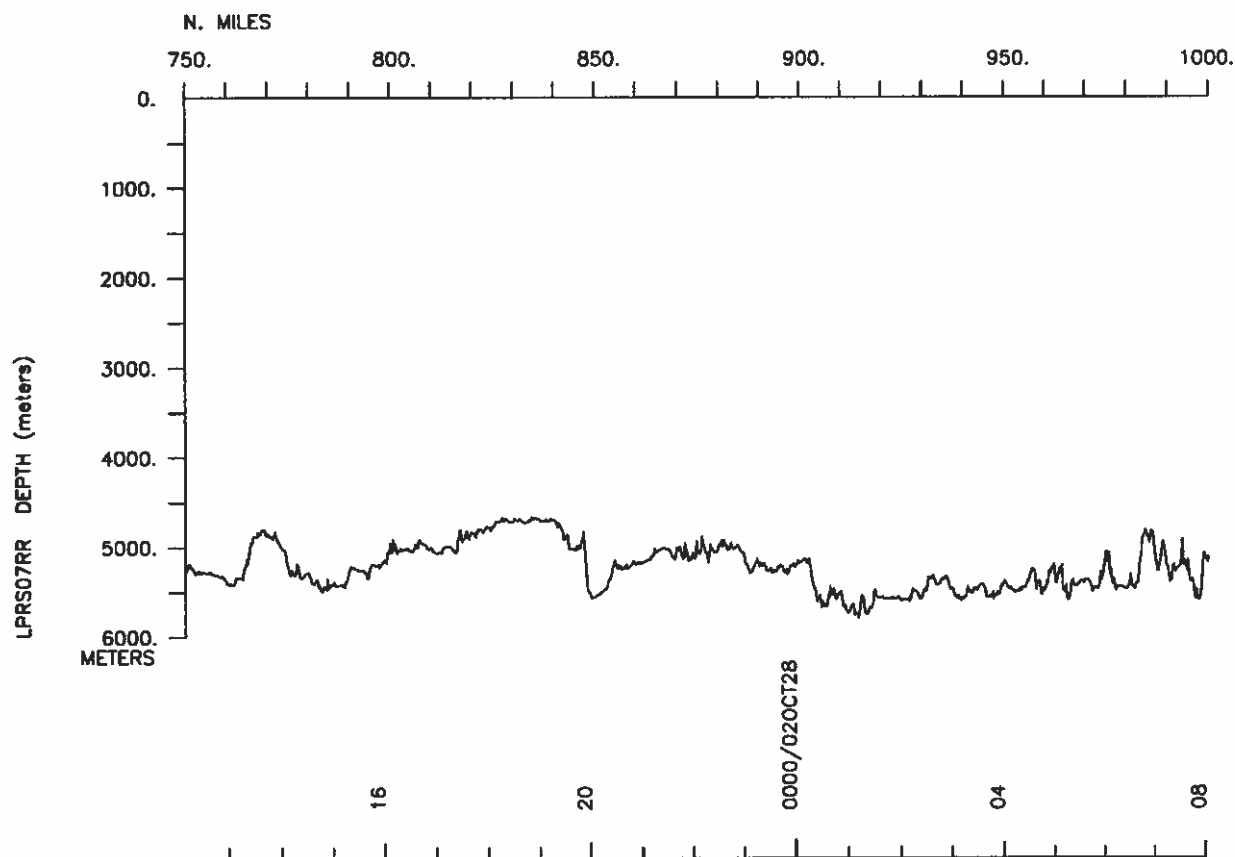
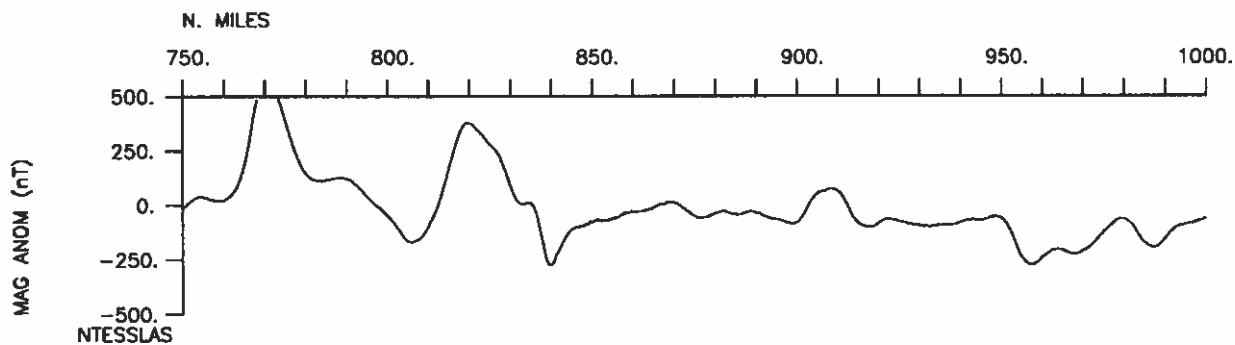
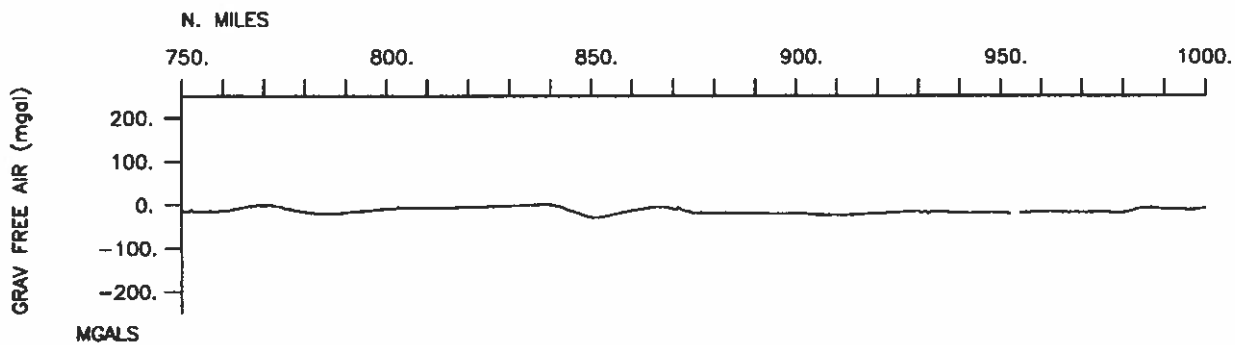
Honolulu, Hawaii - San Diego, California 24 October - 04 November 2002:

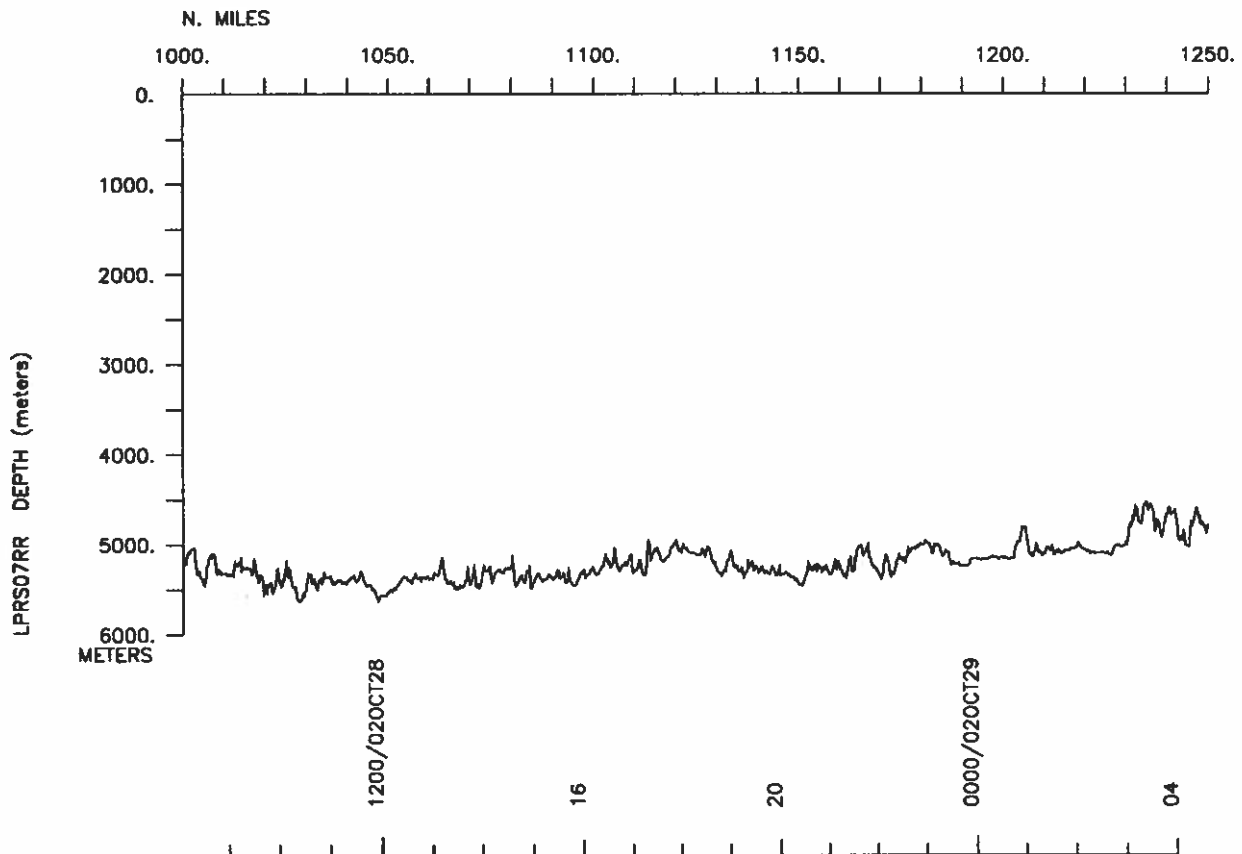
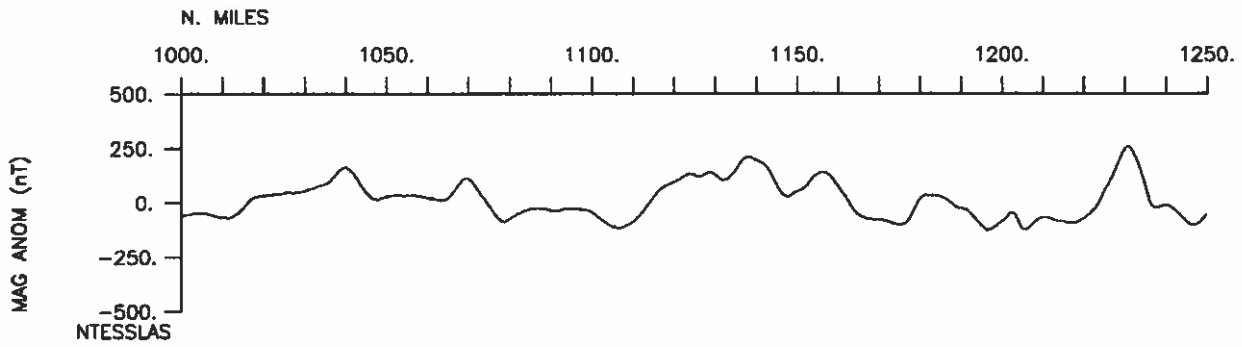
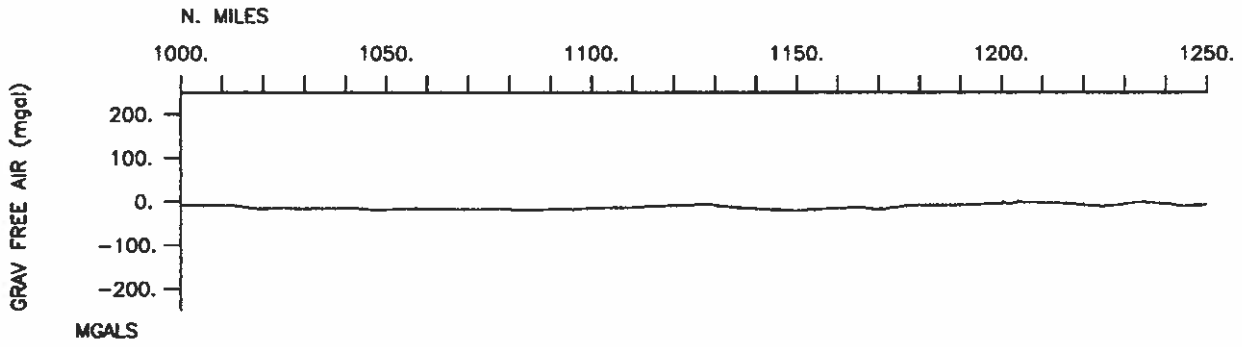
2002 Nov 25 11:43:21

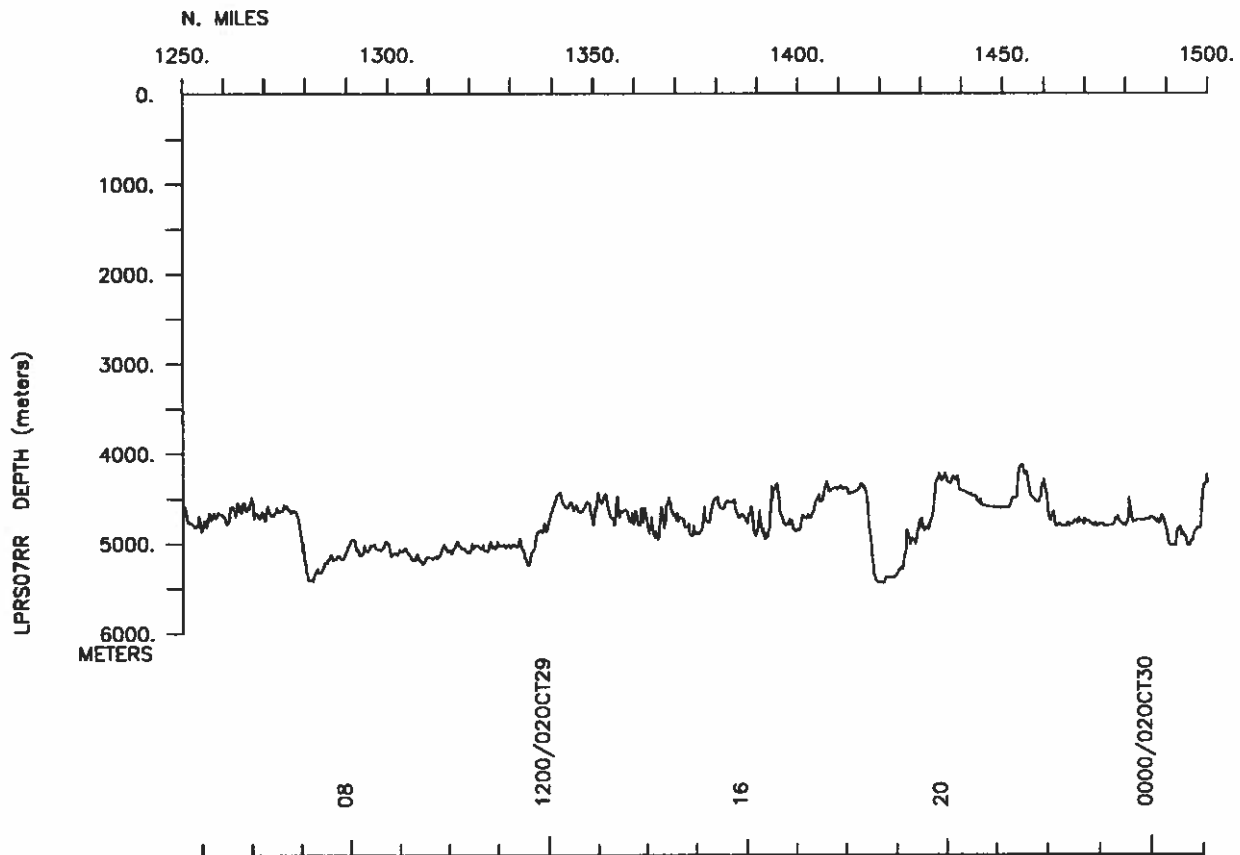
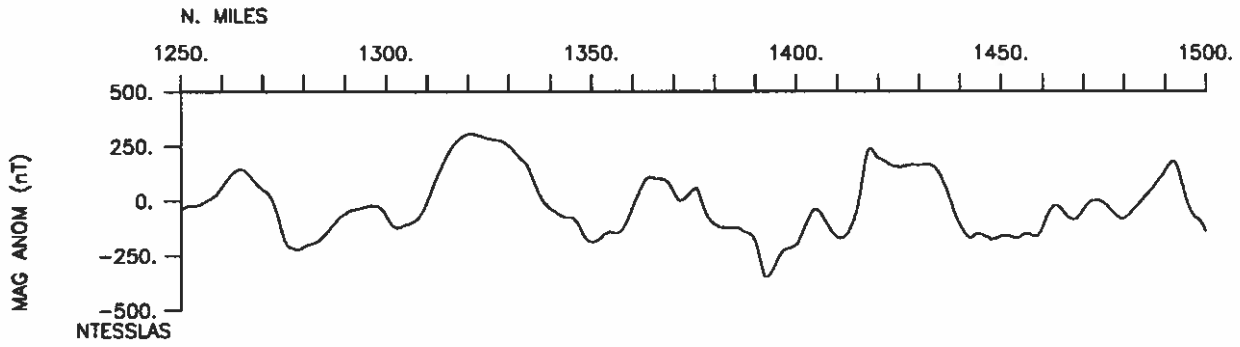
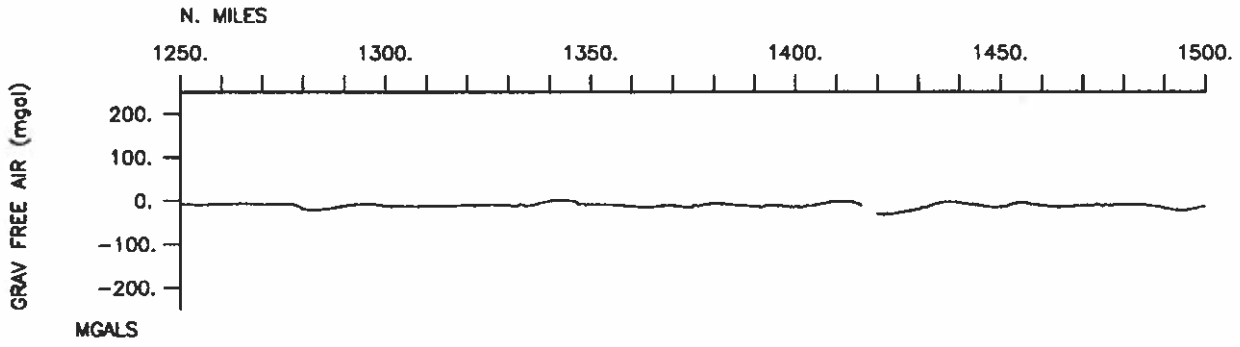


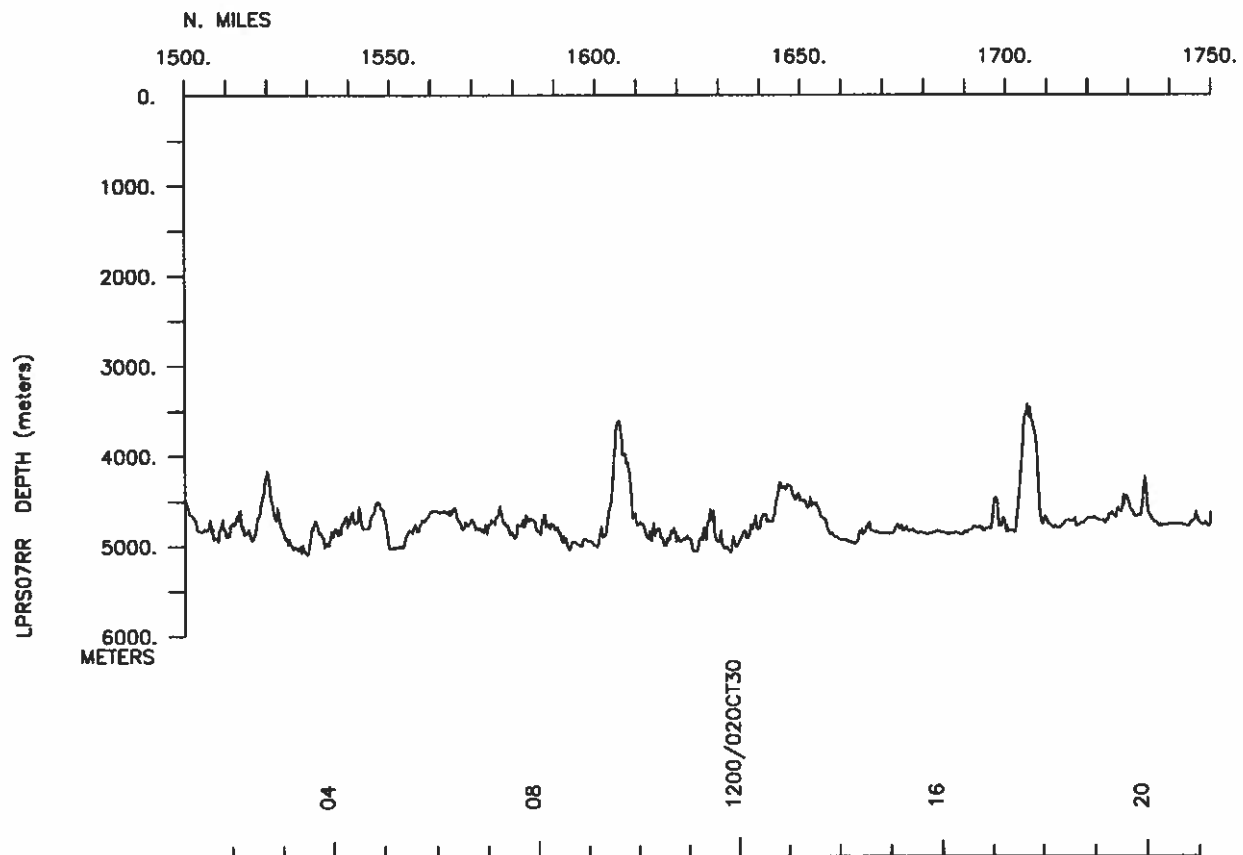
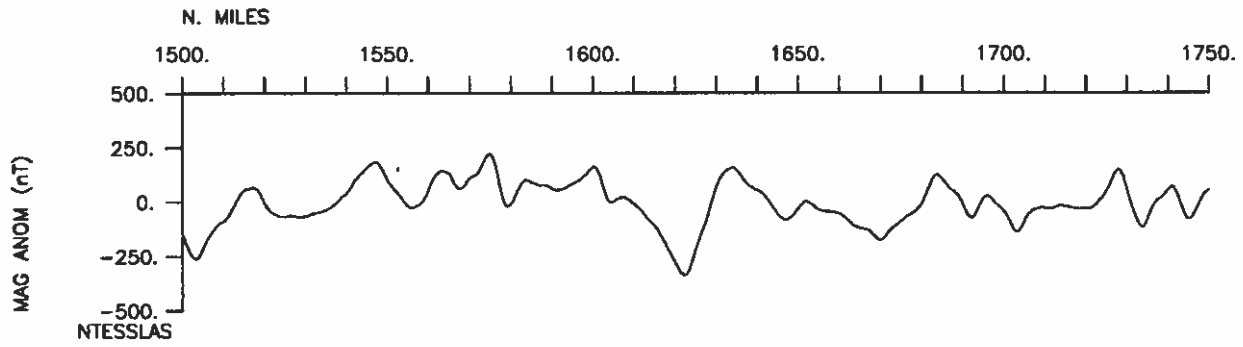
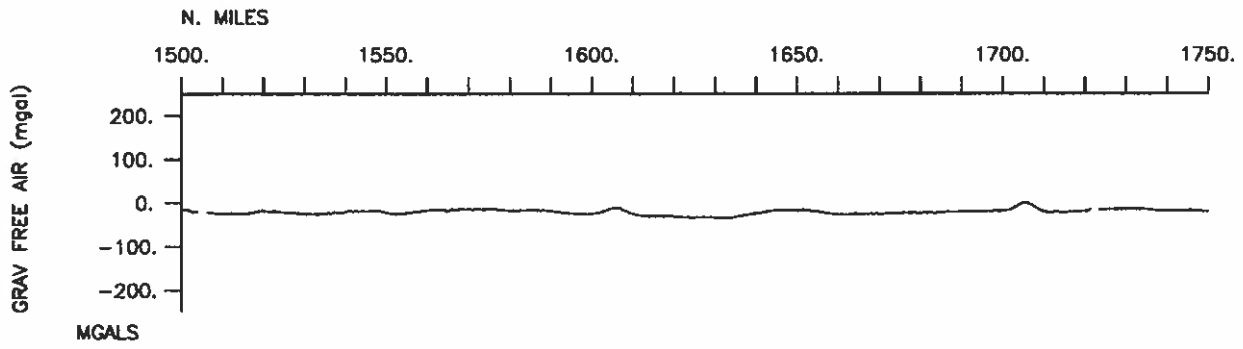


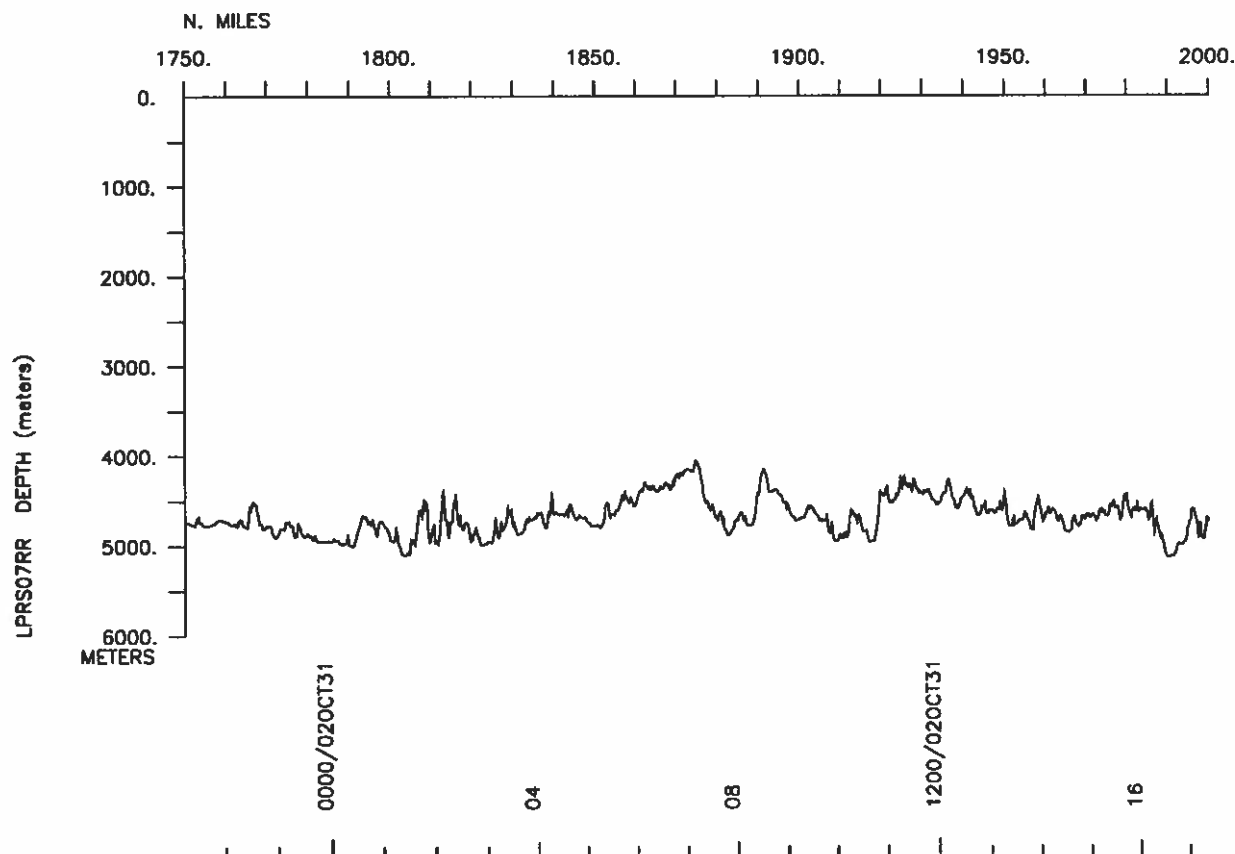
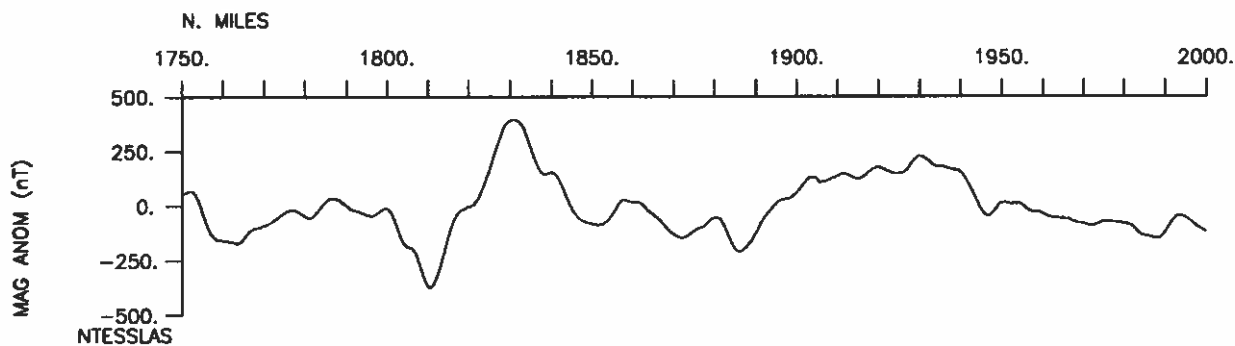
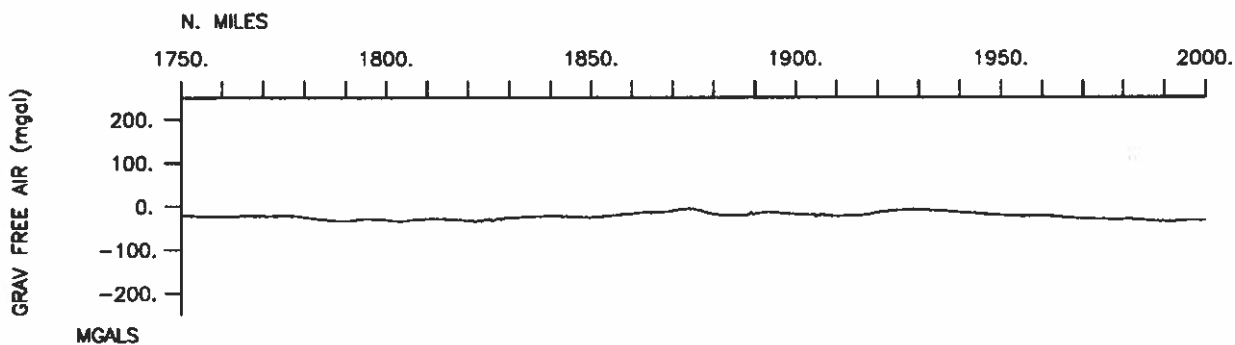


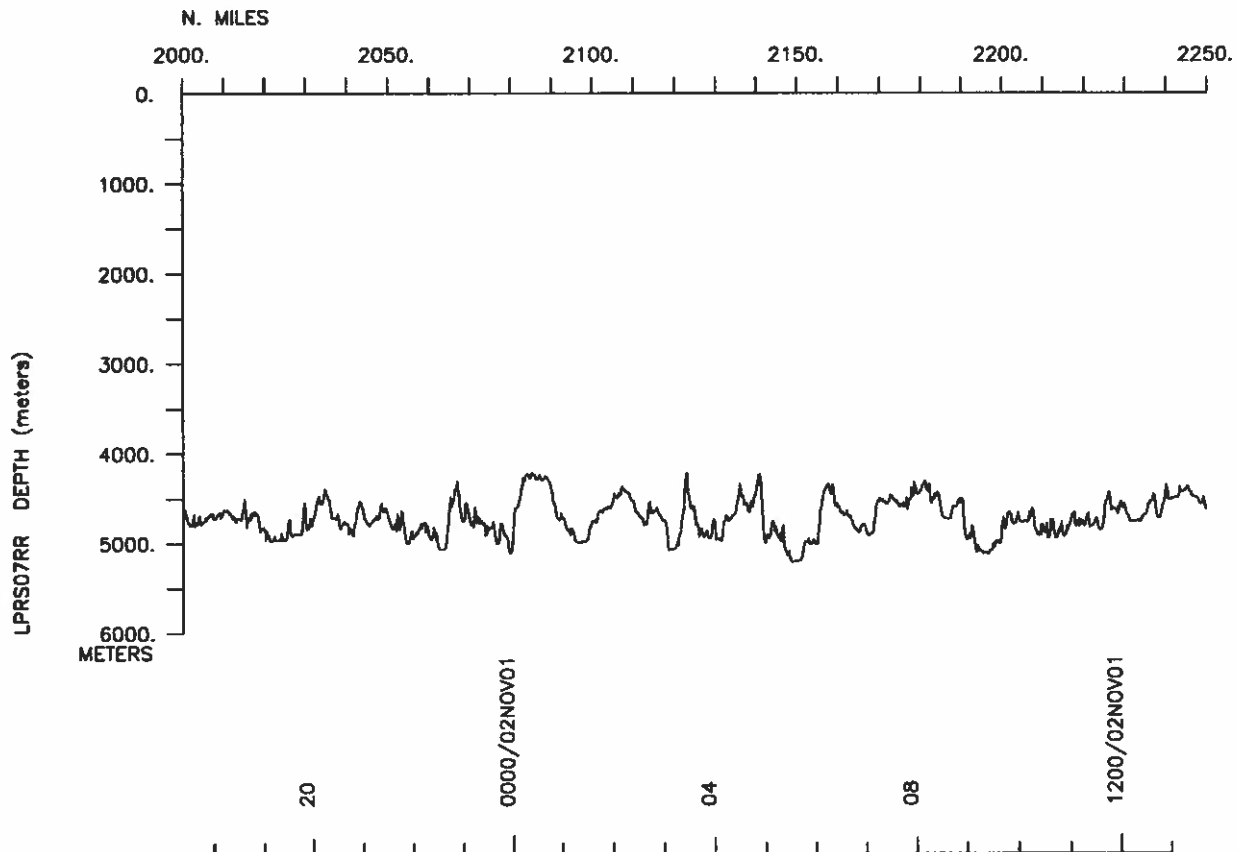
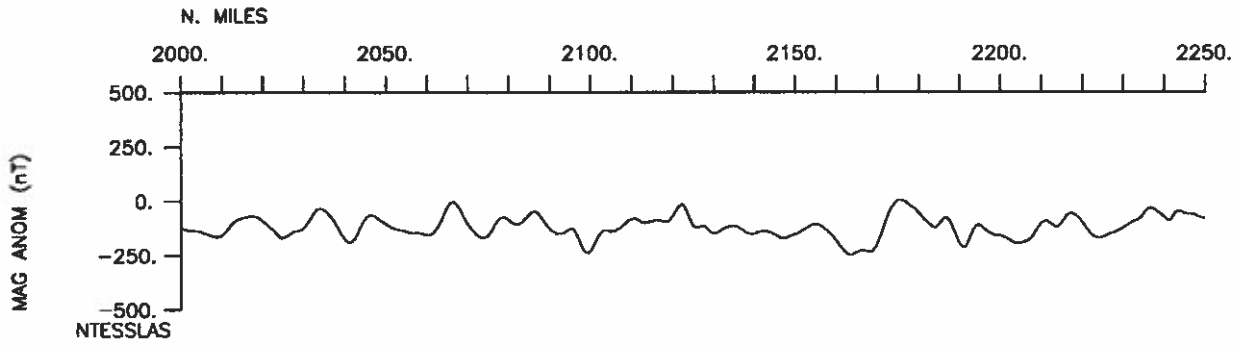
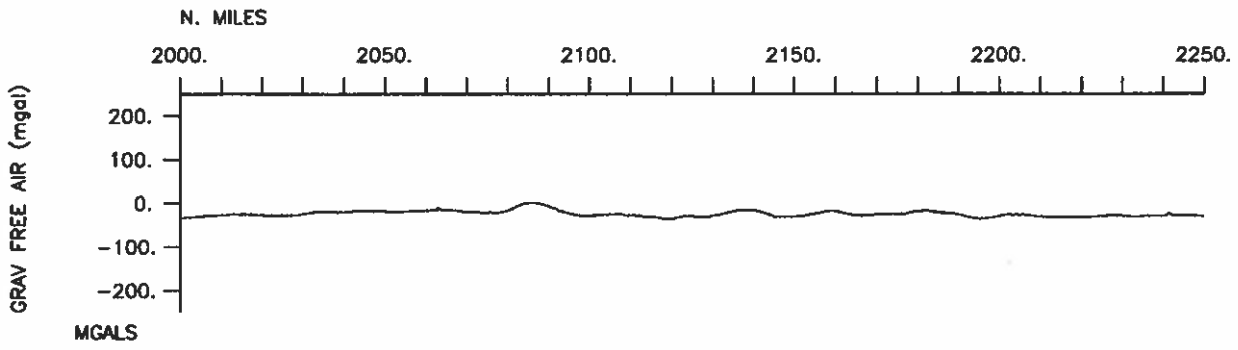


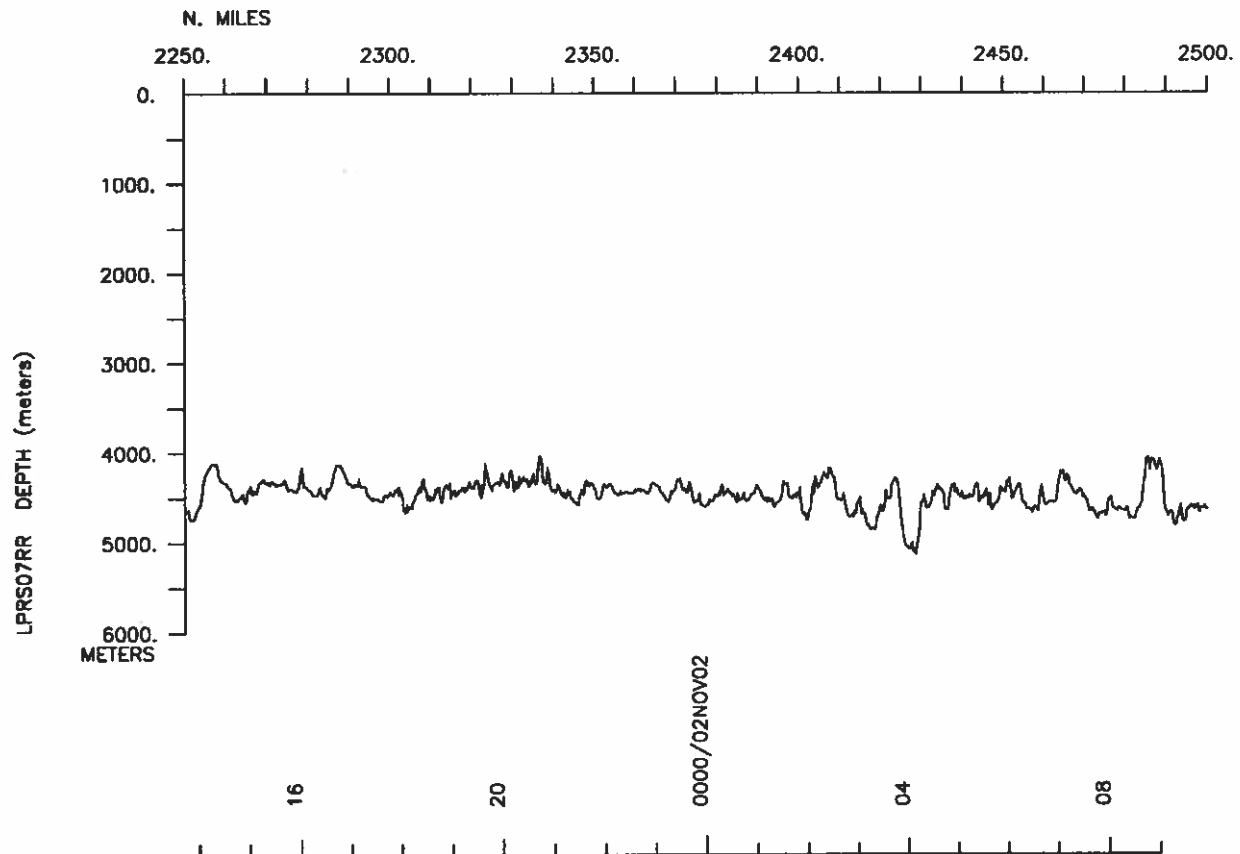
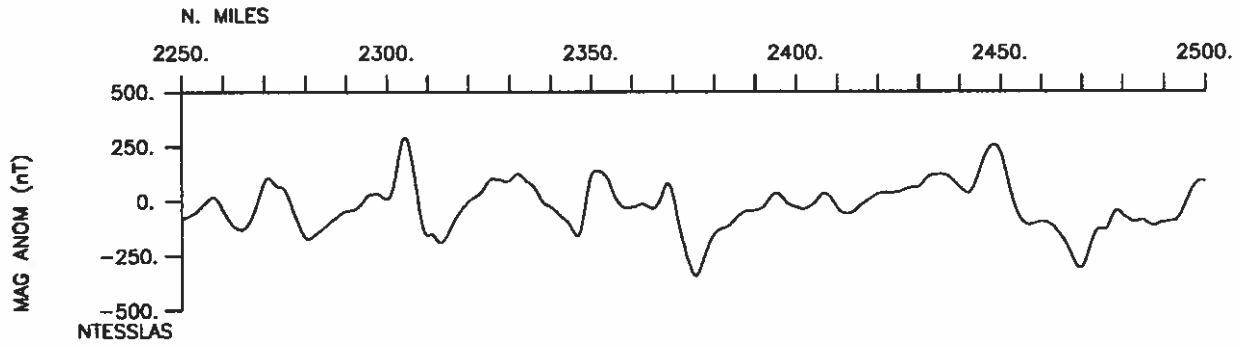
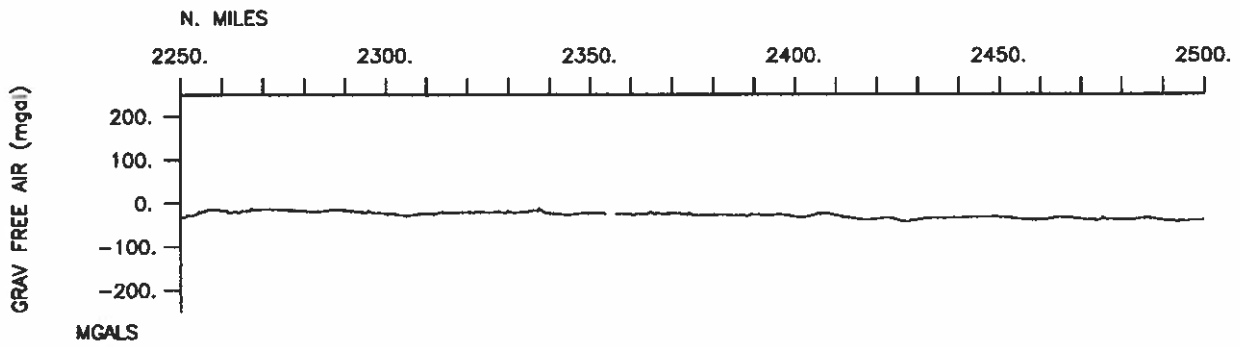


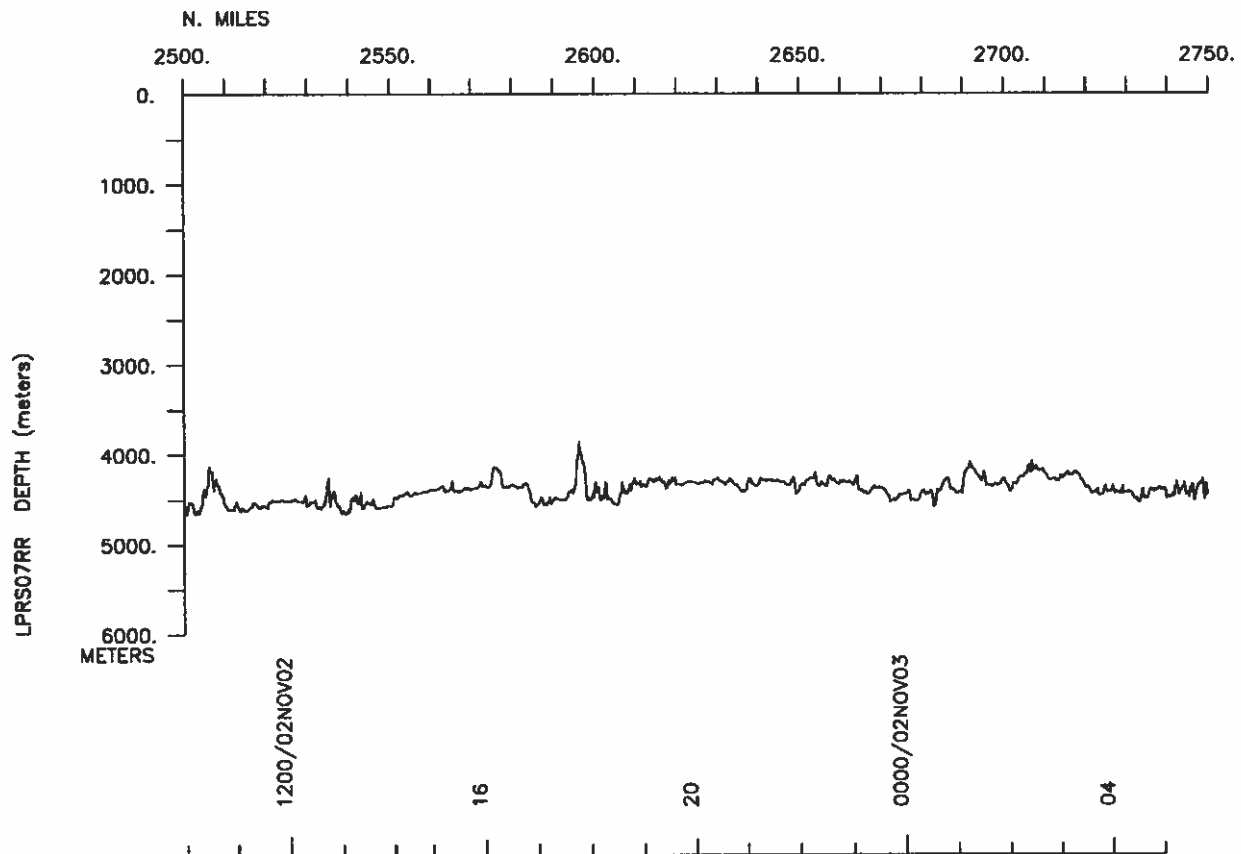
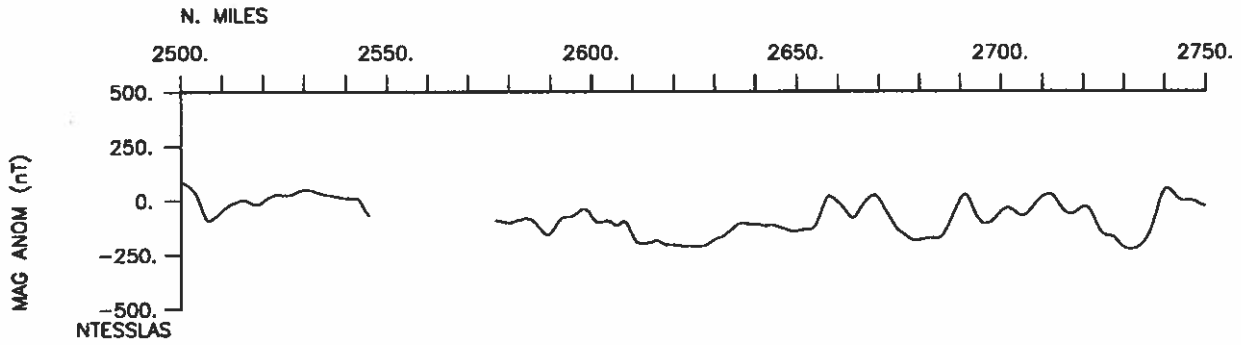
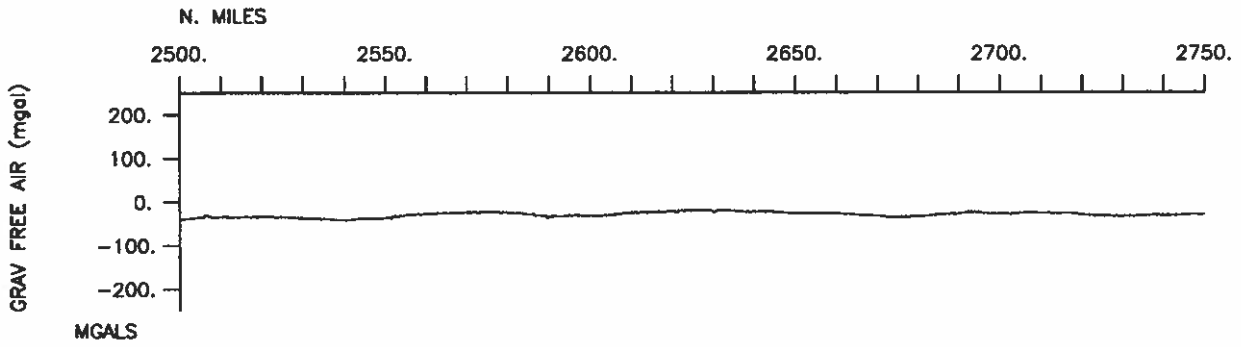


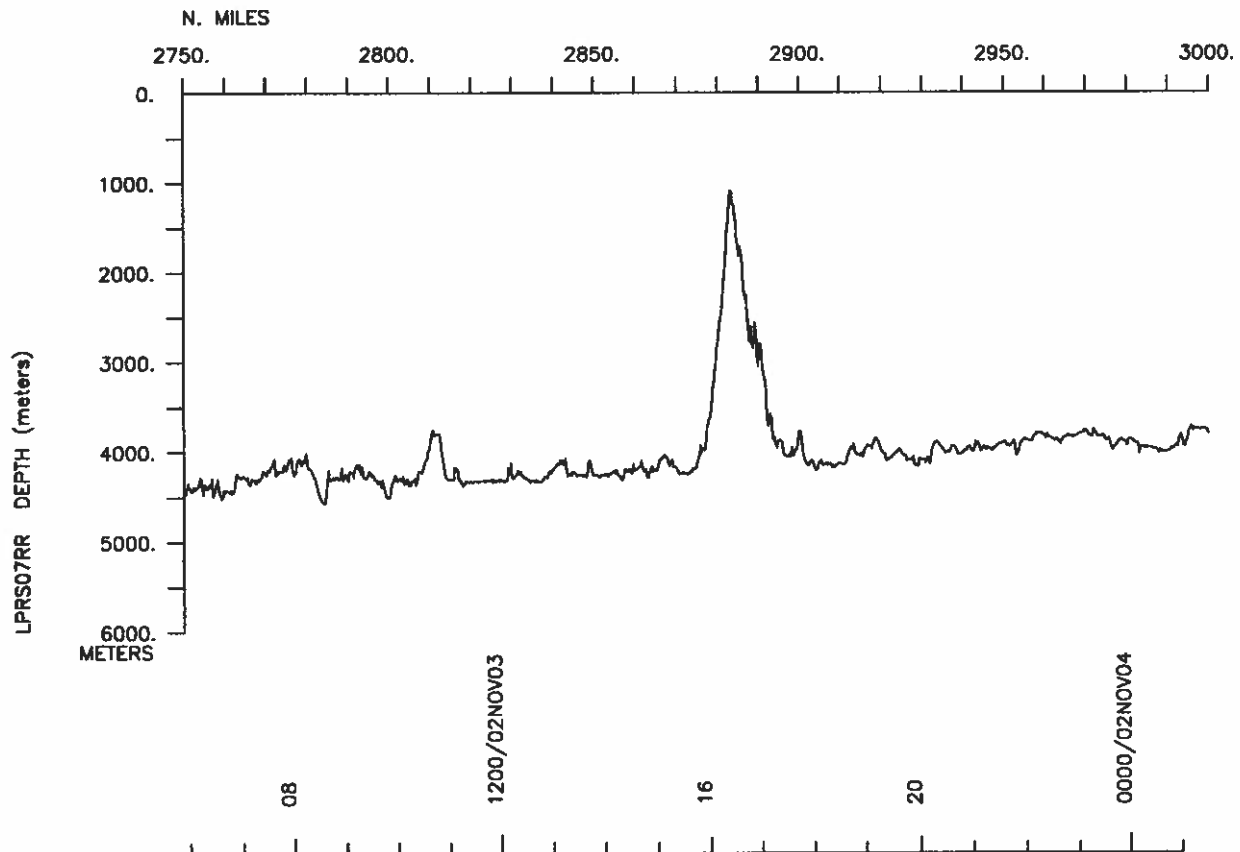
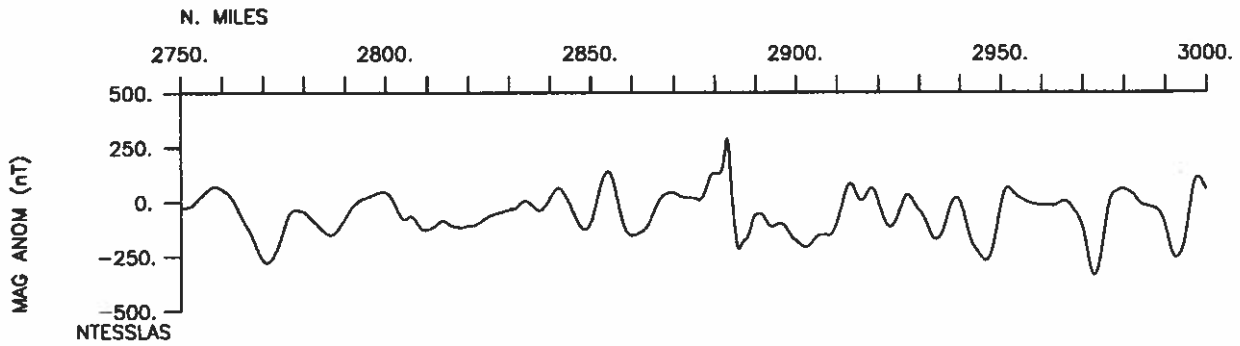
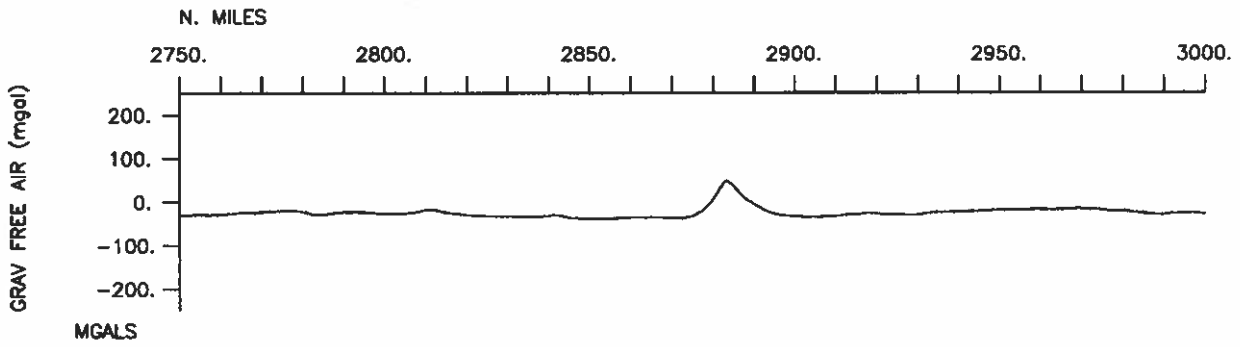


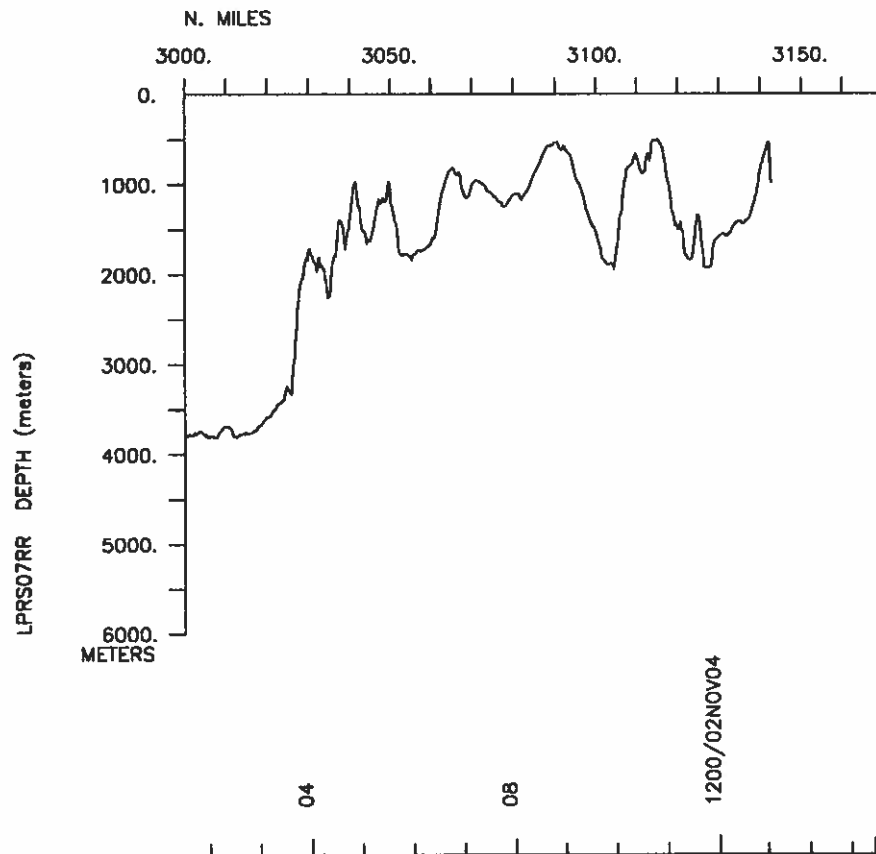
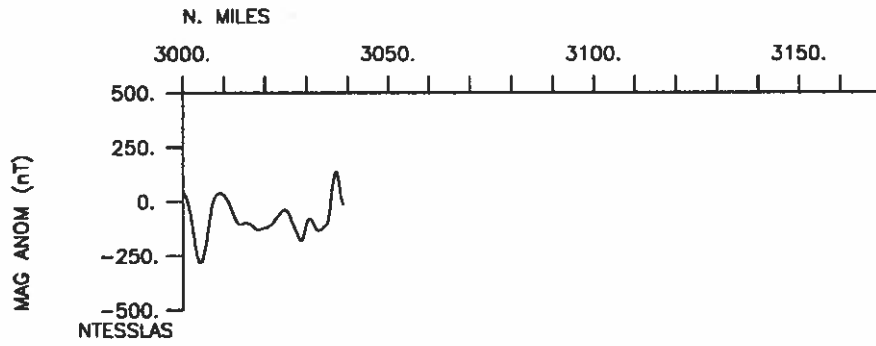
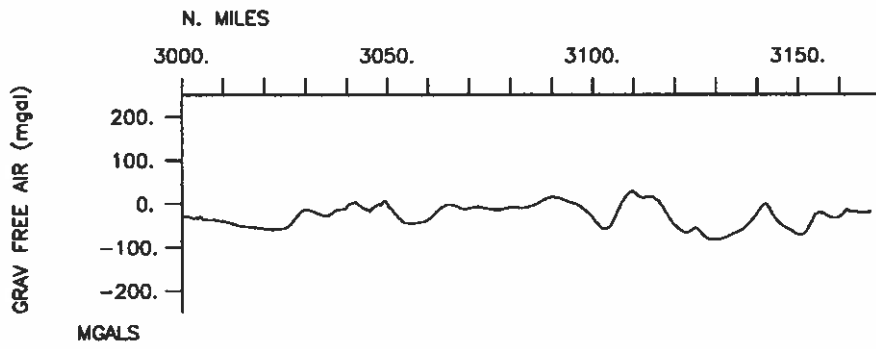












S.I.O. Sample Index

La Perouse Expedition

Leg 7

(LPRS07RR)

R/V Revelle

(Issued November 2002)

PORTS:

Honolulu, Hawaii (24 October 2002)
to
San Diego, California (04 November 2002)

Chief Scientist: Peter Lonsdale
Scripps Institution of Oceanography

The Sample Index is a first level interdisciplinary listing of time, position, sample identification and disposition of all samples, records and measurements collected on this cruise leg. The index data are encoded at sea by the resident marine technician and processed on shore by the S.I.O. Shipboard Technical Support shortly after the completion of the cruise leg.

Positions are interpolated on the basis of sample time by comparison to a single, edited navigation file. Samples beginning at one time and position and ending at another are entered on two consecutive lines. Disposition and sample type are represented by three and four character codes to permit future computer searches on these parameters. (Listings defining these codes are available from the Shipboard Technical Support Group.)

STS Cruise ID# 298

**** Ports ****

1825 241002 0 LGPT B Honolulu, Hawaii 21-18.40N 157-52.03W g LPRS07RR
 1552 041102 0 LGPT E San Diego, California 32-42.40N 117-14.18W g LPRS07RR

**** Personnel ****

#	*****NAME*****	*****TITLE*****	*****AFFILIATION*****	**CRID**
PECS MPL	Lonsdale, P.	Chief Scientist	Scripps Institution	LPRS07RR
PECT STS	Foley, S.	Computer tech	Scripps Institution	LPRS07RR
PECT STS	Quiel, B.	Computer tech	Scripps Institution	LPRS07RR
PERT STS	Wilson, B.	Resident tech	Scripps Institution	LPRS07RR
PERT STS	Willingham, A.	Resident tech	Scripps Institution	LPRS07RR
PEST SIO	Fenwick, R.	Grad student	Scripps Institution	LPRS07RR
PEST SIO	Rigby, S.	Grad student	Scripps Institution	LPRS07RR
PEST SIO	Nunes, F.	Grad student	Scripps Institution	LPRS07RR
PEST SIO	leDantec, N.	Grad student	Scripps Institution	LPRS07RR
PEST SIO	Gagnon, K.	Grad student	Scripps Institution	LPRS07RR
PEST SIO	Thomsen, D.	Grad student	Scripps Institution	LPRS07RR
PEST SIO	Sallas, K.	Grad student	Scripps Institution	LPRS07RR
PEST SIO	Heath, F.	Student	Scripps Institution	LPRS07RR

**** NOTES ****

#An 'X' in the (B)egin/(E)nd column following the sample code indicates no sample or data recovered. A 'C' indicates continuation of data collection #from before the beginning or after the end of a particular leg, (moored #bottom instruments, for example.) The number appearing in the columns #between the sample identifier and the disposition code, for many sample #entries, is the water depth in corrected meters.

#GMT	DDMMYY	SAMP	B	SAMPLE	DISP			p	CRUISE
#TIME	DATE	TZ	CODE	E IDENTIFIER	CODE	LATITUDE	LONGITUDE	c	LEG-SHIP
#-----	---	---	---	-----	-----	-----	-----	-	-----

**** Underway Data Curator - Shipboard Technical Support Group ext.41899 ****
 **** Digital Data Curator - Geological Data Center, S.P. Miller, ext.41898 ****

**** Log Books ****

0400 241002 0 LBUW B Underway log books STS 21-18.41N 157-52.00W g LPRS07RR
 0556 031102 0 LBUW E Underway log books STS 29-18.84N 124-03.64W g LPRS07RR

**** MultiBeam Data (SIMRAD) ****

1846 241002 0 MBSI B EM120multibeam data GDC 21-16.32N 157-52.76W g LPRS07RR
 1307 041102 0 MBSI E EM120multibeam data GDC 32-29.05N 117-35.65W g LPRS07RR

#GMT	DDMMYY	SAMP	B	SAMPLE	DISP				p	CRUISE
#TIME	DATE	TZ	CODE	E IDENTIFIER	CODE	LATITUDE	LONGITUDE		c	LEG-SHIP
#-----	-----	---	----	-----	----	-----	-----	-----	---	-----

*** Digital Magnetics (Earth Total Field) ***

0225	251002	0	MGDD	B digital mag data	GDC	21-28.06N	156-20.65W	g	LPRS07RR
0441	041102	0	MGDD	E digital mag data	GDC	31-53.44N	119-20.96W	g	LPRS07RR

*** Digital Gravity ***

1848	241002	0	GVDD	B Gravity data	GDC	21-15.98N	157-52.66W	g	LPRS07RR
2350	041102	0	GVDD	E Gravity data	GDC	32-42.40N	117-14.18W	g	LPRS07RR

*** Integrated Meteorological Acquisition System ***

0000	251002	0	IMET	B weather measurements	GDC	21-20.98N	156-48.56W	g	LPRS07RR
2350	041102	0	IMET	E weather measurements	GDC	32-42.40N	117-14.18W	g	LPRS07RR

*** Expendable Bathythermographs ***

2236	241002	0	BTXP	MK12 # 1	Fast_Deep	GDC	21-18.29N	157-05.38W	g	LPRS07RR
2312	251002	0	BTXP	MK12 # 2	Fast_Deep	GDC	21-59.68N	152-16.45W	g	LPRS07RR
2313	261002	0	BTXP	MK12 # 3	Fast_Deep	GDC	22-44.97N	147-33.47W	g	LPRS07RR
2334	261002	0	BTXP	MK12 # 4	Fast_Deep	GDC	22-45.79N	147-29.13W	g	LPRS07RR
2311	271002	0	BTXP	MK12 # 5	Fast_Deep	GDC	23-30.75N	143-48.22W	g	LPRS07RR
2337	281002	0	BTXP	MK12 # 7	Fast_Deep	GDC	23-43.09N	140-30.24W	g	LPRS07RR
2345	291002	0	BTXP	MK12 # 8	Fast_Deep	GDC	24-30.92N	136-34.59W	g	LPRS07RR
2231	301002	0	BTXP	MK12 # 9	Fast_Deep	GDC	25-16.26N	134-27.60W	g	LPRS07RR
2350	311002	0	BTXP	MK12 # 10	Fast_Deep	GDC	25-06.15N	130-57.38W	g	LPRS07RR
2348	011102	0	BTXP	MK12 # 11	Fast_Deep	GDC	25-14.57N	127-27.70W	g	LPRS07RR
1348	021102	0	BTXP	MK12 # 12	Fast_Deep	GDC	26-54.59N	125-42.84W	g	LPRS07RR
0136	031102	0	BTXP	MK12 # 13	Fast_Deep	GDC	28-49.35N	124-55.79W	g	LPRS07RR
0148	031102	0	BTXP	MK12 # 14	Fast_Deep	GDC	28-50.76N	124-53.42W	g	LPRS07RR
2352	031102	0	BTXP	MK12 # 15	Fast_Deep	GDC	31-20.14N	120-19.77W	g	LPRS07RR

#				End Sample Index						LPRS07RR
---	--	--	--	------------------	--	--	--	--	--	----------