

*Lands*

VOLCAN LAND & WATER CO.

REPORT ON SAN LUIS REY RIVER VALLEY AND THE  
COUNTRY TRIBUTARY THERETO.

*Report S.L. Rey River*

THOS F. ELLIS.

October 1912

## REPORT

### SAN LUIS REY RIVER VALLEY AND THE COUNTRY TRIBUTARY THERETO.

By THOS. P. HLLIS,  
October-1912.

The scope of the following report is to include and summarize the amount of tillable land tributary to a transportation line following along the main course of the San Luis Rey River, San Diego County, California. Extending eastward from a main at Oceanside to the Warner Ranch Vicinity.

The TERRITORY, taken as tributary to this system is bounded by the crests of adjoining hills, and limited by its proximity to other sources of transportation. This gives a natural method of fixing the bounding lines; while thoretically good, we must allow wide variations for practice. The area thus included is from 800 to 1000 square miles.

The VALLEY of the San Luis Rey River is some 50 miles in length and has an average width of over one mile. It consists of some 40,000 acres of bottom land the greater portion of which can be utilized for farming. In this valley and its tributary valleys frost occurs in the winter months, consequently we find no citrus orchards but in their stead alfalfa, beans and other lagumes, sugar beets, garden truck, hay, grains, green fruits such as peaches etc.

The CITRUS BELT extends approximately from the 500 foot to the 1500 foot elevation and lies eastward of a direct line between Escondido and Fallbrook. This area comprises about 92,000 acres. Below the 500 foot contour and above the valley or bottom land therein is an additional 22,000 acres part of which also can be used for citrus growing. This gives a combined area of 114,000 acres fifty percent of which can be used for the growing of citrus fruits or hays, grains, wine and table grapes

which are likewise principal products. Peaches, pears, plums, olives and some apples are also raised. Dairy farming is carried on with good results.

Above the 1500 foot elevation there are some 390,000 acres, of which 260,000 acres are about 30 per cent efficient for stock raising and growing apples, cherries and other deciduous fruits and berries. The remaining 130,000 acres are very mountainous and are about 10 percent efficient for similar produce, lumber and minerals are extensive and much wild buckwheat, sage and other flowering plants abound from which any number of bees can obtain a copious supply of honey.

The accompanying map will show the probable extent of the tributary country; the San Luis Rey River Valley in shades; the wagon roads in light parallel lines; the towns and villages; the 500 and 1500 foot contours; the ranches; the very mountainous land dimly outlined with contour dashes; the average rainfall for 25 years indicated with heavy dashed lines; and the first and last months of frosts for the season indicated at various places. This information is not abundant and can not be shown by isothermal lines.

Respectfully submitted,

*Thos. P. Ellis*

Civil Engineer.

R4W

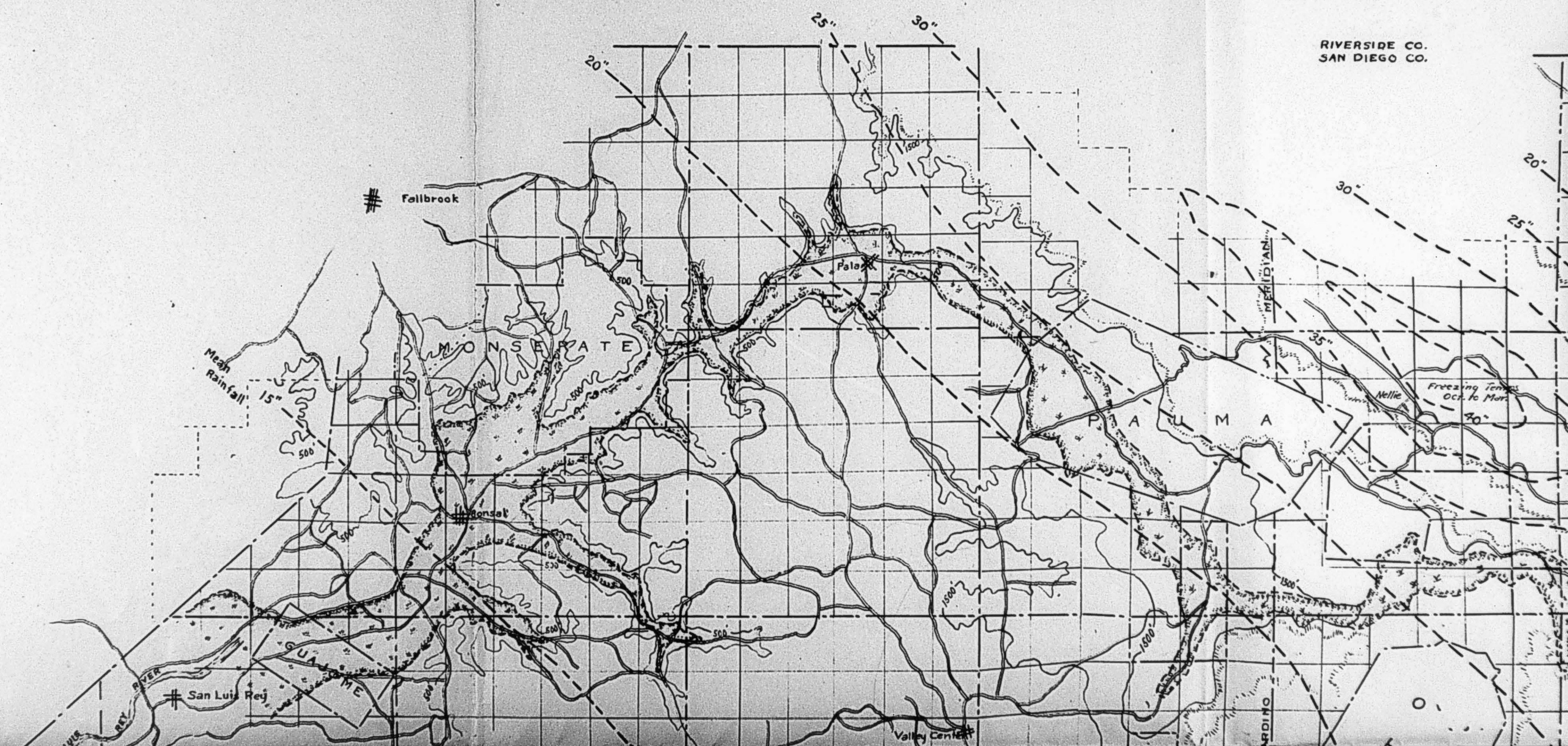
R3W

R2W

RIW

RIE

RIVERSIDE CO.  
SAN DIEGO CO.



R 1 E

R 2 E

R 3 E

R 4 E

R 5 E

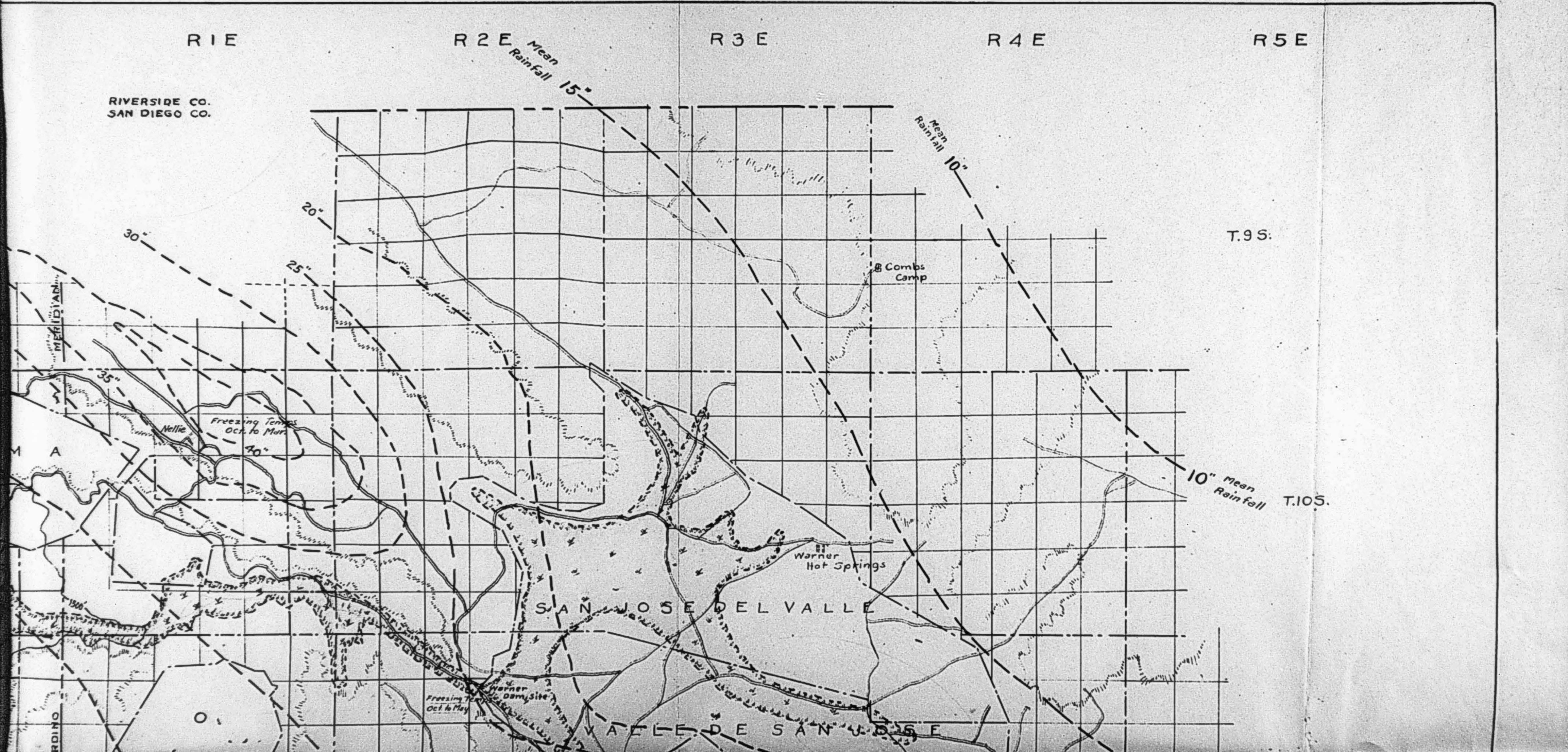
RIVERSIDE CO.  
SAN DIEGO CO.

Mean  
Rainfall 15"

Mean  
Rainfall 10"

T.95.

10" mean  
Rain fall T.105.

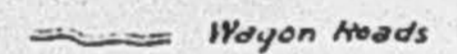
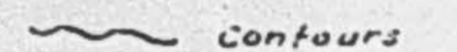
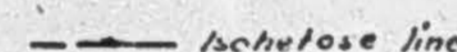
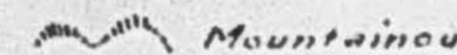




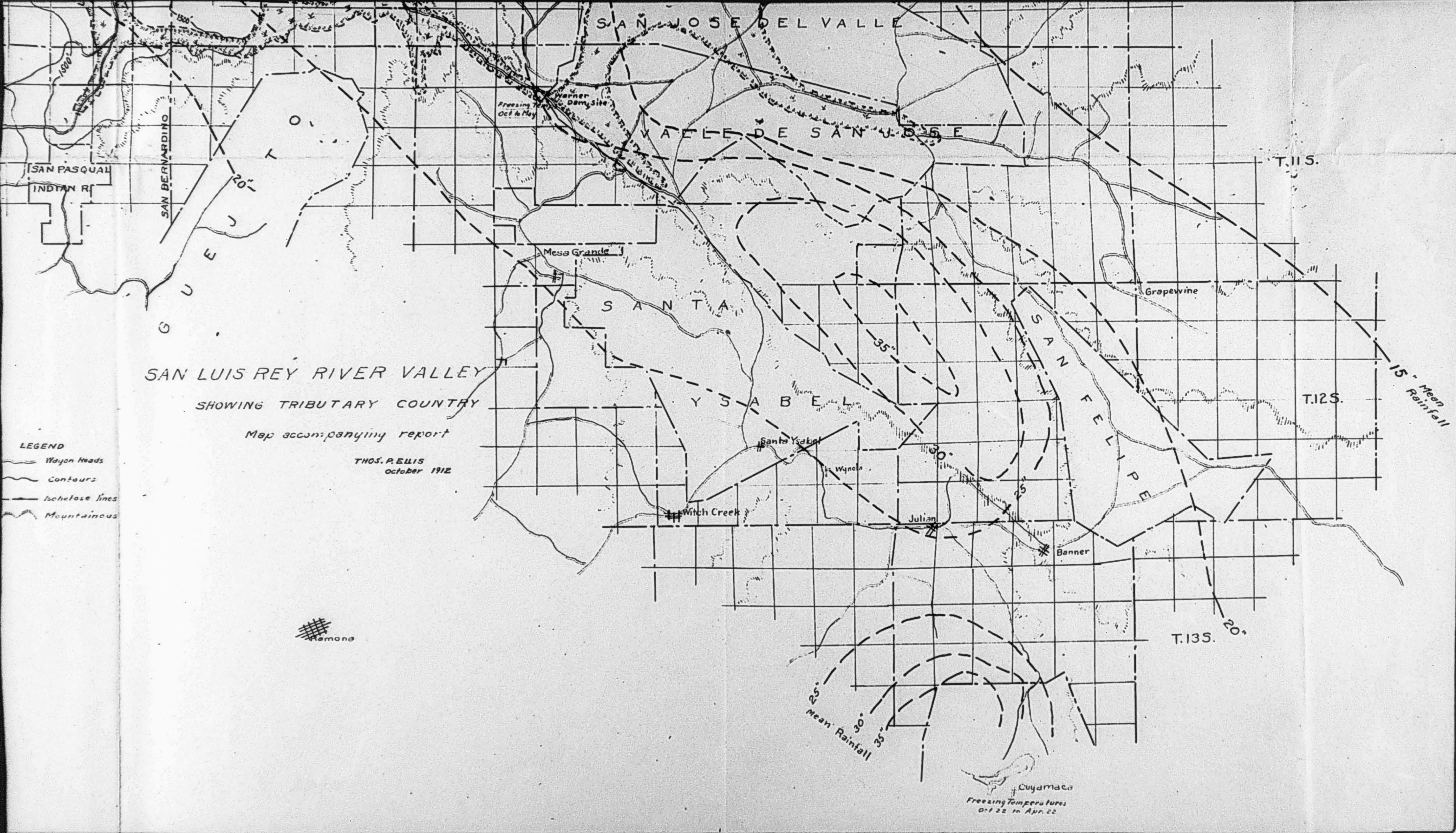
SAN LUIS REY RIVER VALLEY  
 SHOWING TRIBUTARY COUNTRY

Map accompanying report

THOS. P. ELLIS  
 October 1912

- LEGEND**
-  Wagon heads
  -  Contours
  -  Isotherm lines
  -  Mountainous





SAN LUIS REY RIVER VALLEY

SHOWING TRIBUTARY COUNTRY

Map accompanying report

THOS. P. ELLIS  
October 1912

- LEGEND
- Wagon Roads
  - Contours
  - Isohetose lines
  - Mountainous

Ramona

Cuyamaca  
Freezing Temperatures  
Oct 22 to Apr 22

15" Mean Rainfall

25" Mean Rainfall

T.135. 20"

T.125.

T.115.

SAN JOSE DEL VALLE

VALLE DE SAN JOSE

SANTA

YSABEL

SAN FELIPE

SAN BERNARDINO

SAN PASQUAL  
INDIAN R.

Mesa Grande

Grapewine

Santa Ysabel

Wynola

Witch Creek

Julian

Banner

Freezing  
Oct to May

Warner  
Dam Site

1000'

20'

35"

30"

25"

20"

**Ed Fletcher Papers**

**1870-1955**

**MSS.81**

**Box: 36 Folder: 8**

**Business Records - Reports - Ellis, Thomas P - "Report on San Luis Rey River Valley and the country tributary thereto**



**Copyright:** UC Regents

**Use:** This work is available from the UC San Diego Libraries. This digital copy of the work is intended to support research, teaching, and private study.

**Constraints:** This work is protected by the U.S. Copyright Law (Title 17, U.S.C.). Use of this work beyond that allowed by "fair use" requires written permission of the UC Regents. Permission may be obtained from the UC San Diego Libraries department having custody of the work (<http://libraries.ucsd.edu/collections/mscl/>). Responsibility for obtaining permissions and any use and distribution of this work rests exclusively with the user and not the UC San Diego Libraries.