

INFORMAL REPORT AND INDEX OF  
NAVIGATION, DEPTH, MAGNETIC AND SUBBOTTOM PROFILER DATA  
(Issued July 1986)

PAPATUA EXPEDITION

LEG 6

Auckland, New Zealand (16 February 1986)  
to  
Rabaul, New Britain (14 March 1986)

R/V T. Washington

Chief Scientist - H. Craig

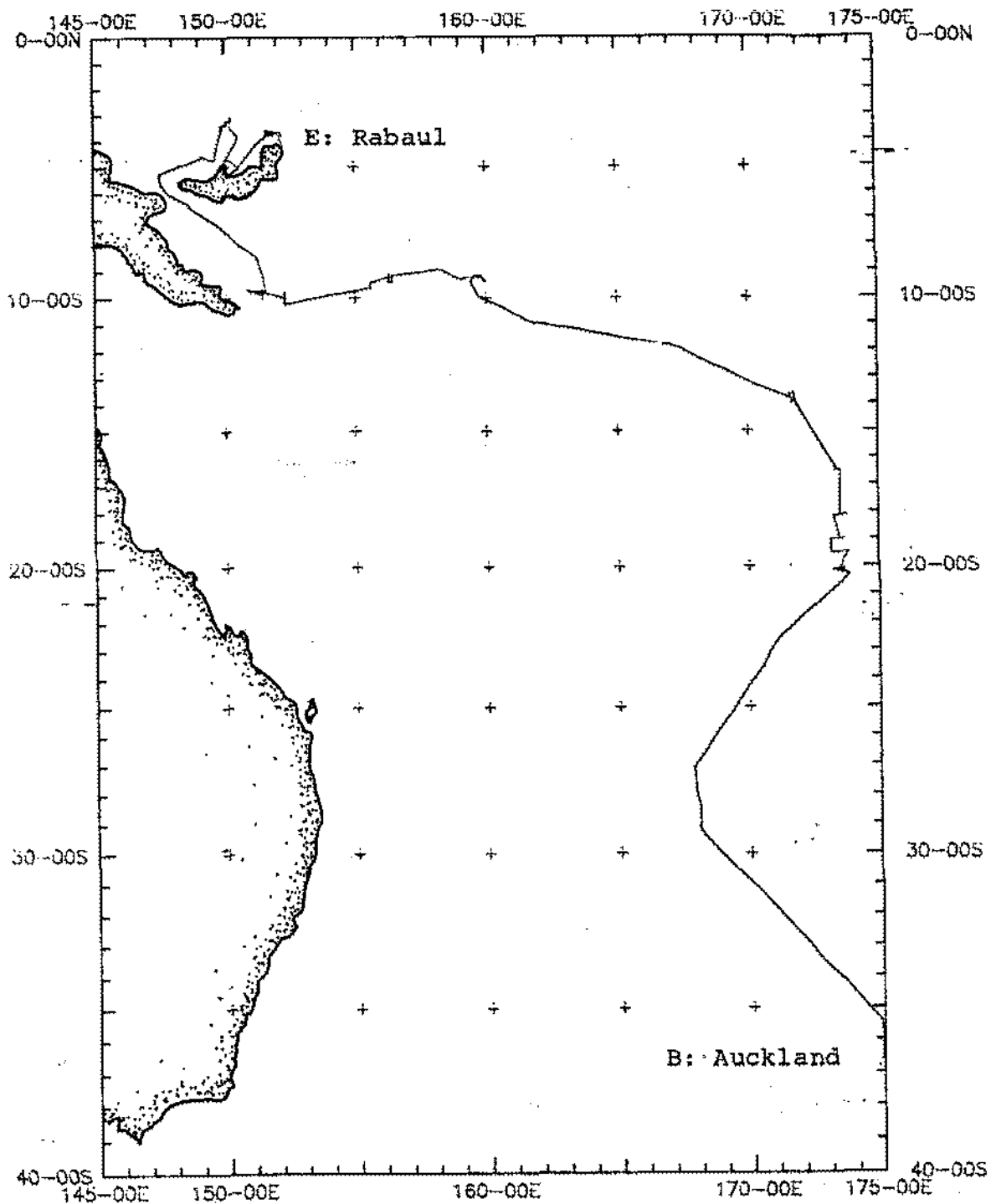
Resident Marine Tech - R. Comer

Post-Cruise Processing and Report Preparation  
by S.I.O. Geological Data Center

Data Collection Funded by NSF OCE83-17741  
Bathymetry Processing Funded by NGDC Contract 50RANE600049

NOTE: This is an index of underway geophysical data edited and processed after the completion of the cruise leg and is intended primarily for informal use within the institution. This document is not to be reproduced or distributed outside Scripps without prior approval of the chief scientist or the Geological Data Center, Scripps Institution of Oceanography, La Jolla, California 92093.

GDC Cruise I.D.# 220

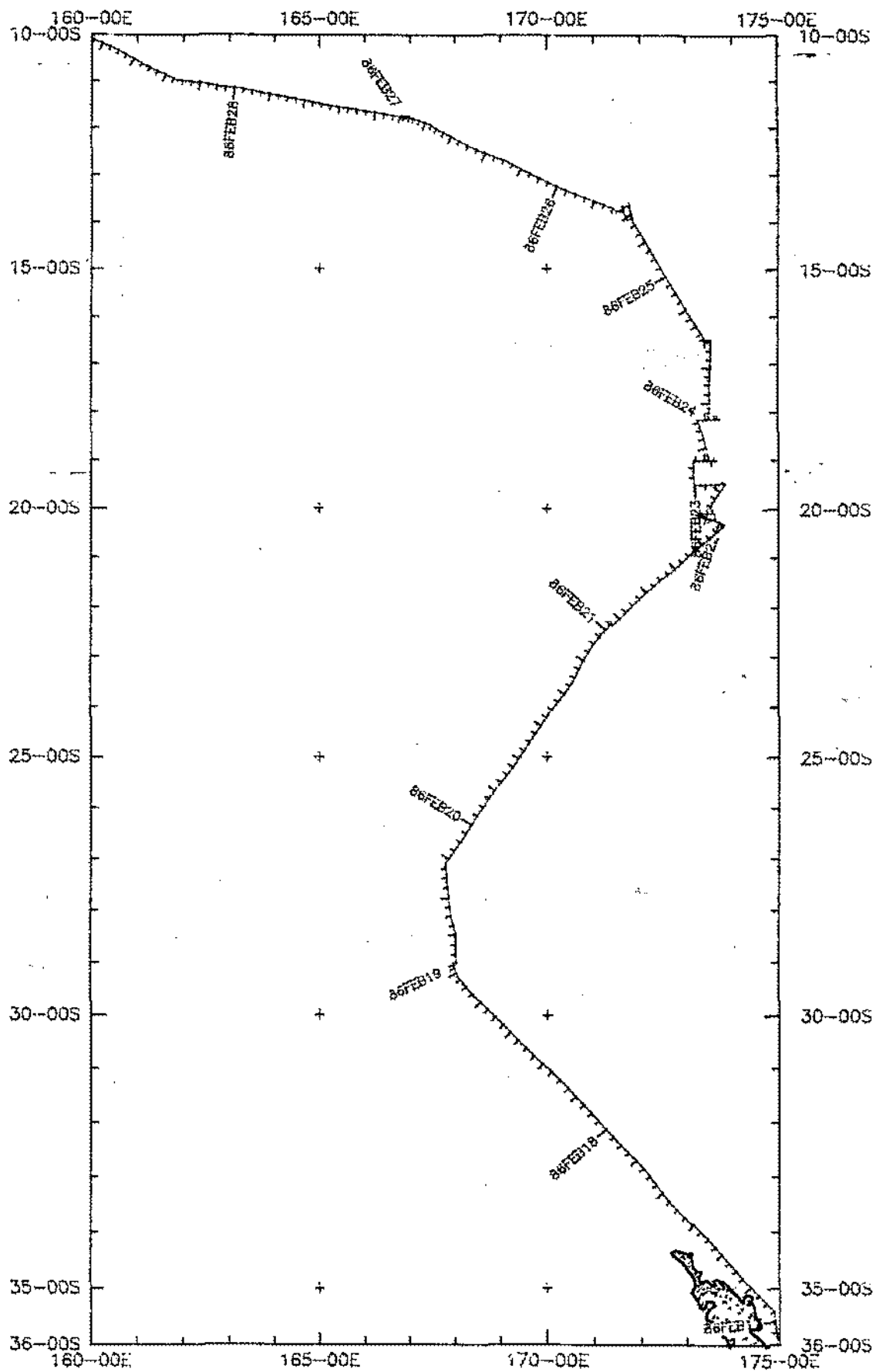


PAPATUA LEG 06 Track at .1632in/degree

CHIEF SCIENTIST: H. Craig (SIO)  
 PORTS: Auckland, New Zealand - Rabaul, New Britain  
 DATES: 16 February - 14 March 1986  
 SHIP: R/V T. Washington

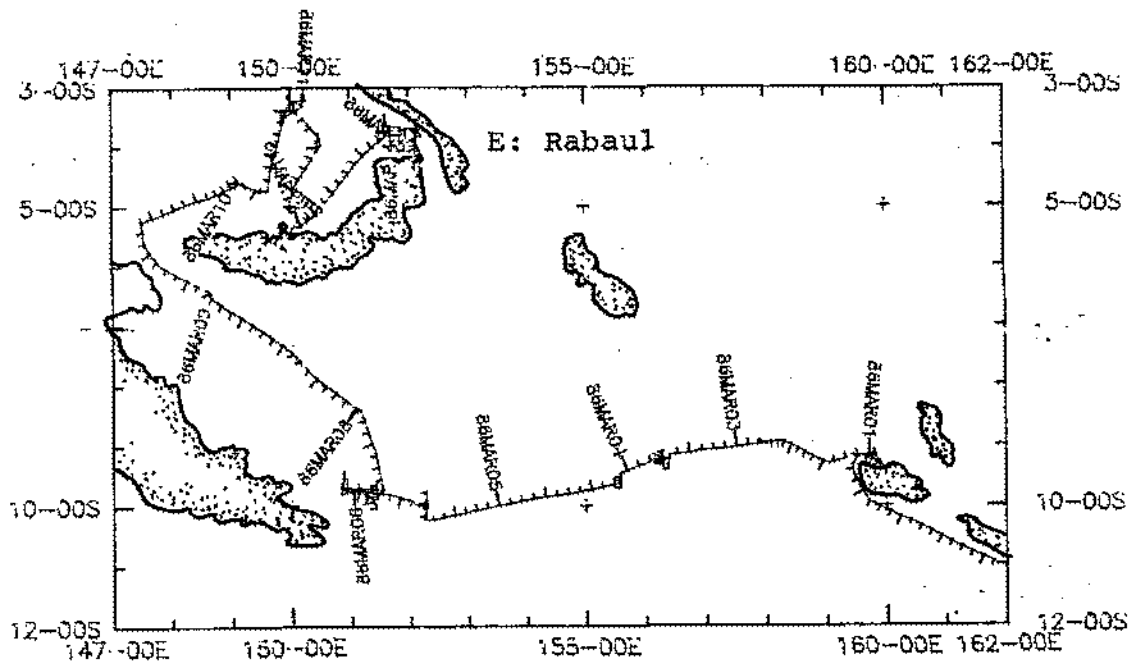
TOTAL MILEAGE OF UNDERWAY DATA COLLECTED

- 1) Cruise - 5065 miles
- 2) Bathymetry - 4800 miles
- 3) Magnetics - 4195 miles
- 4) Seismic Reflection - none collected
- 5) Gravity - none collected
- 6) SeaBeam - none collected

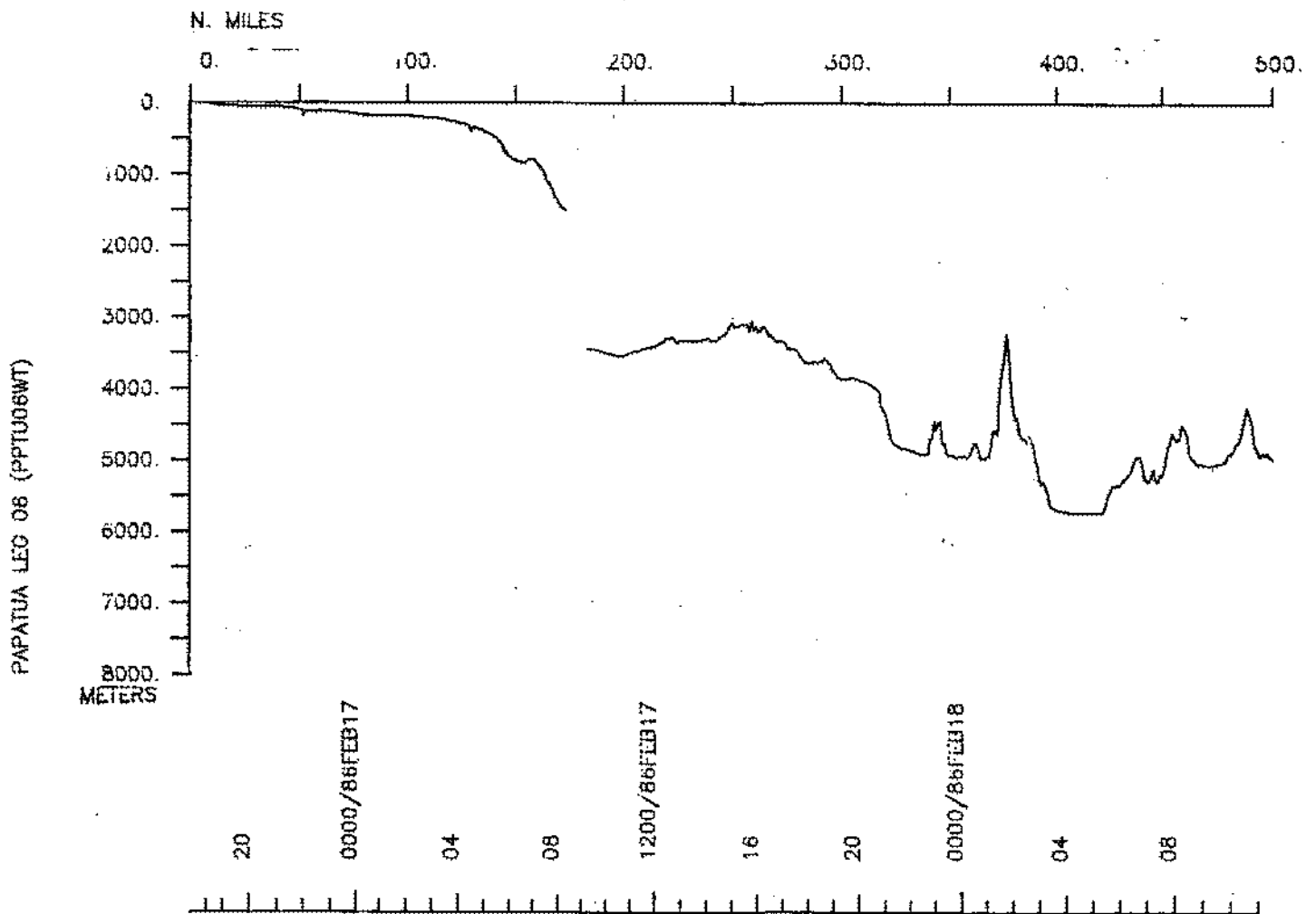
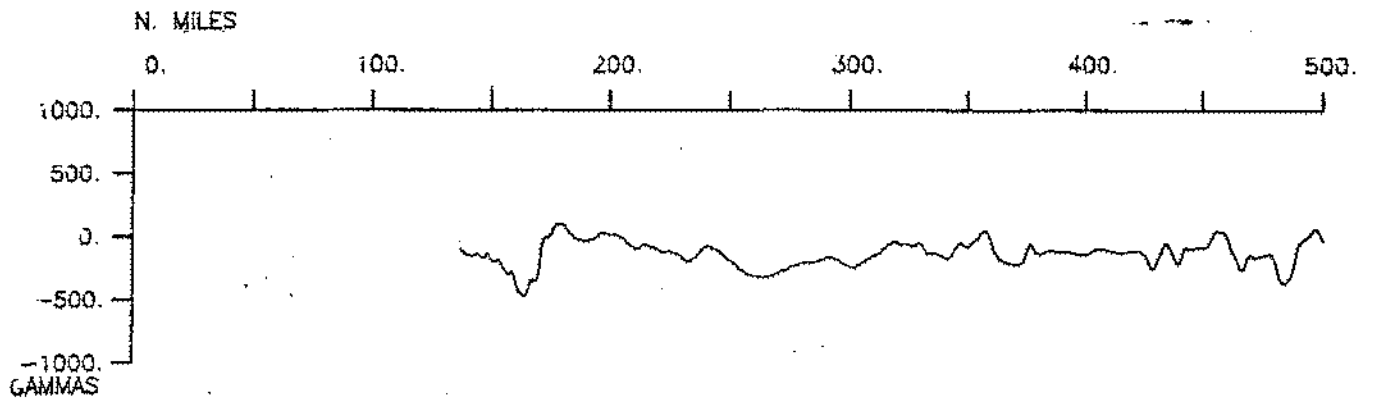


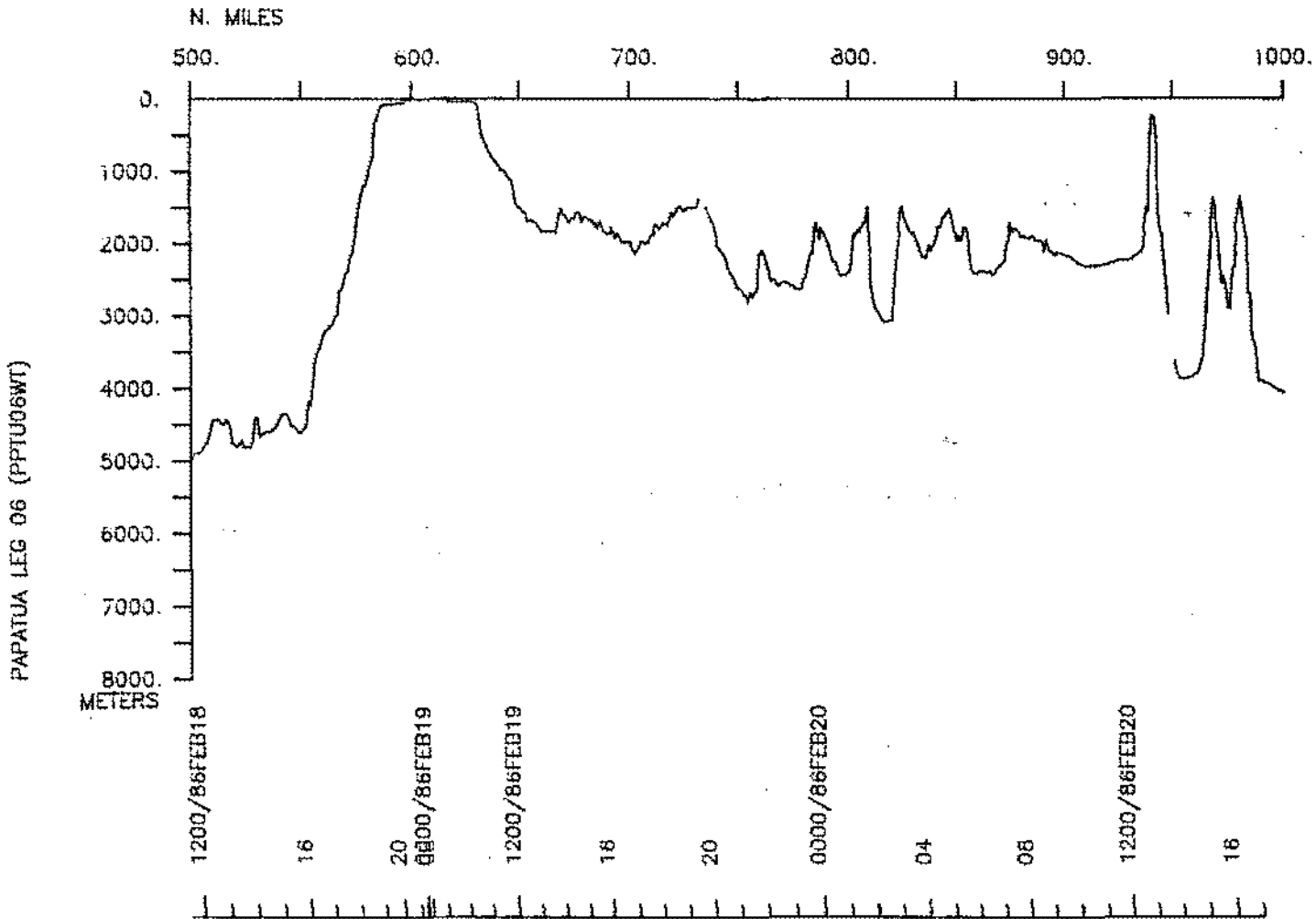
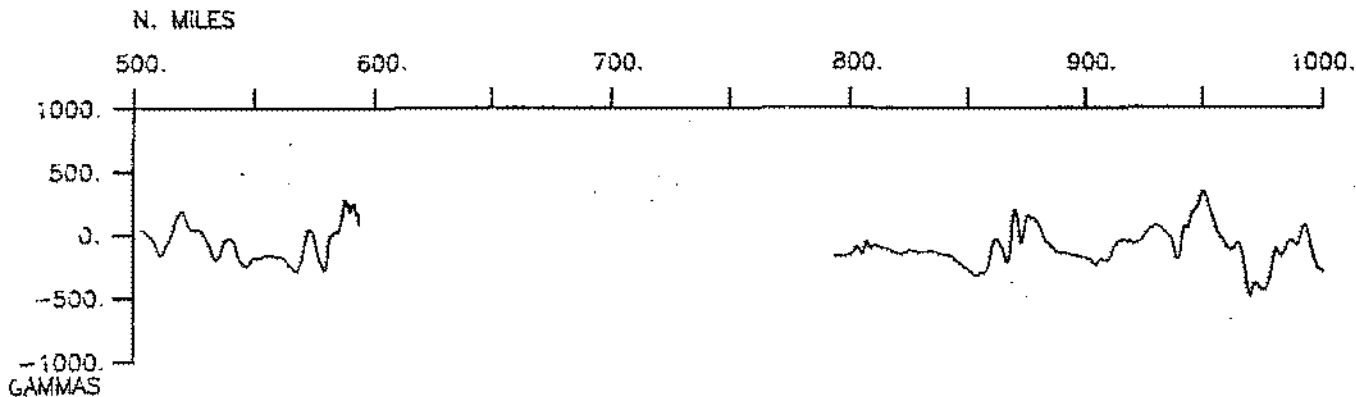
B: Auckland

PAPATUA LEG 06 Track at .312in/degree Plot 1

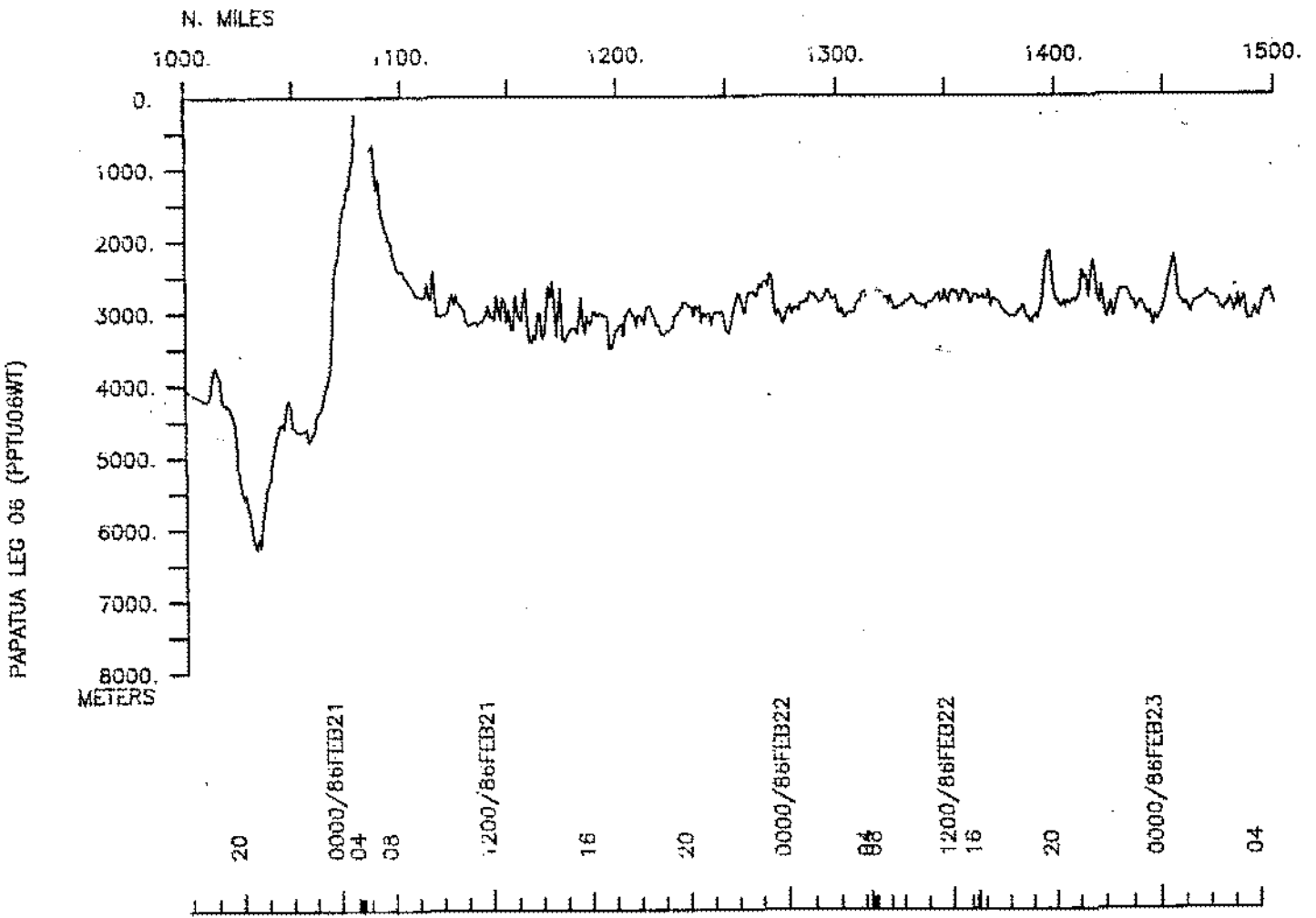
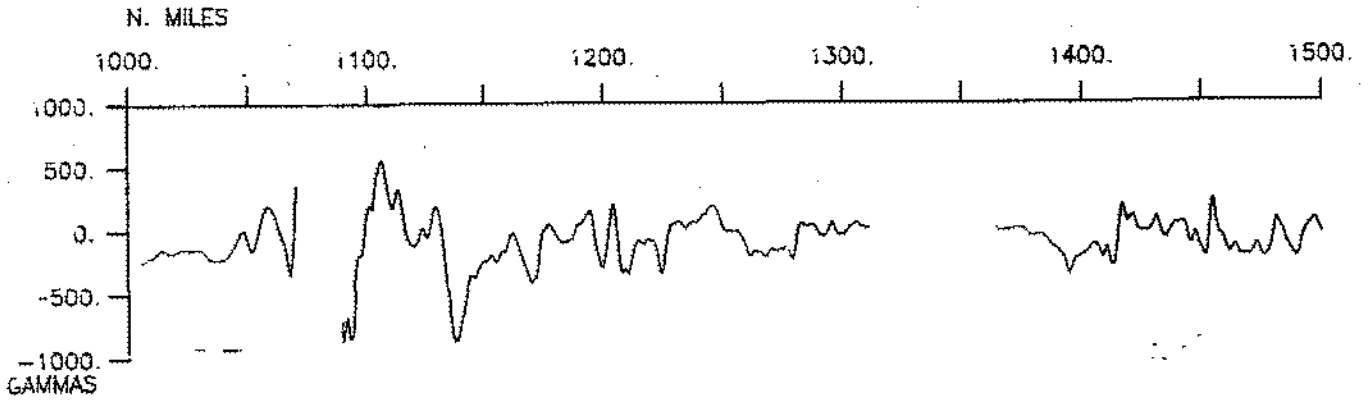


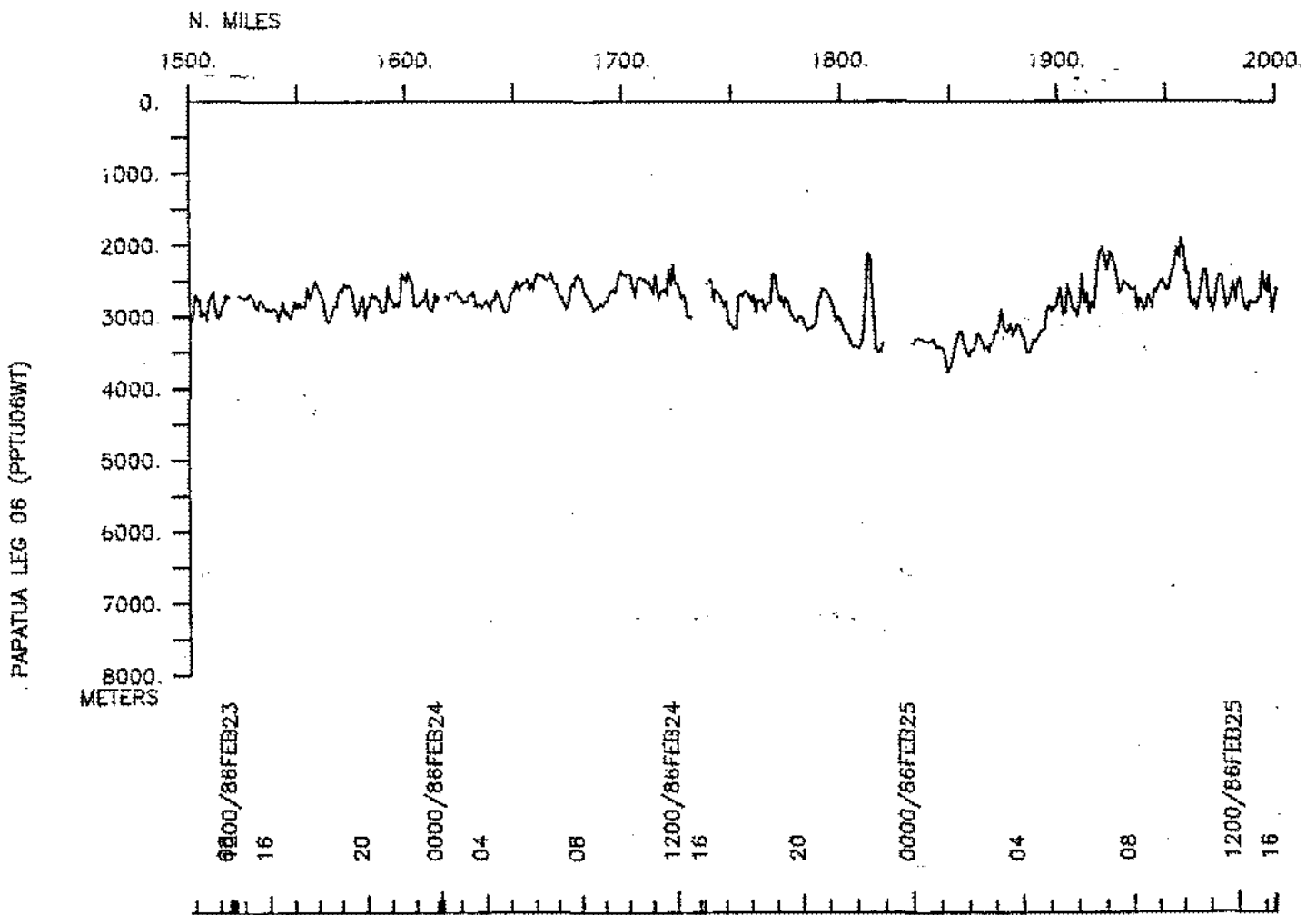
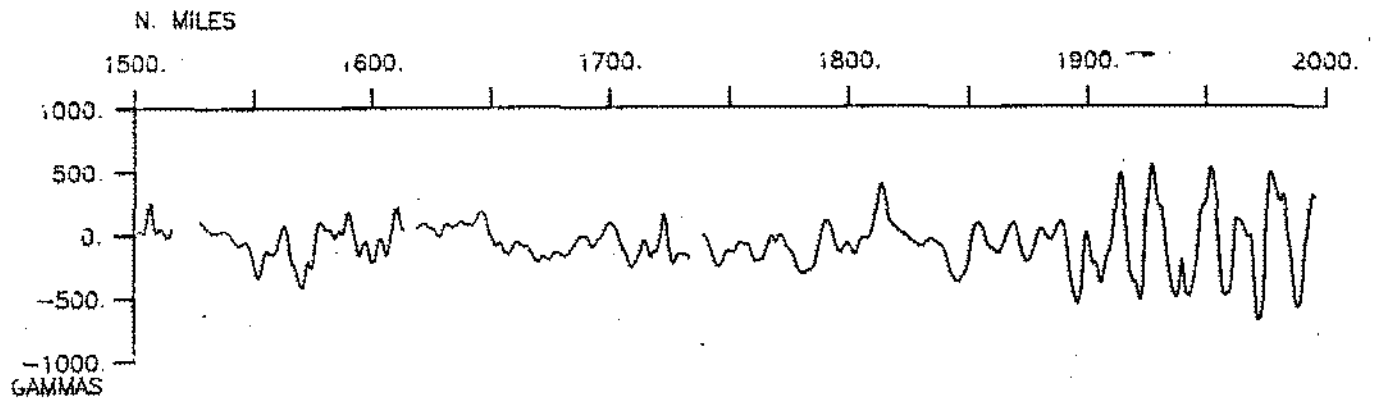
PAPATUA LEG 06 Track at .312in/degree Plot 2



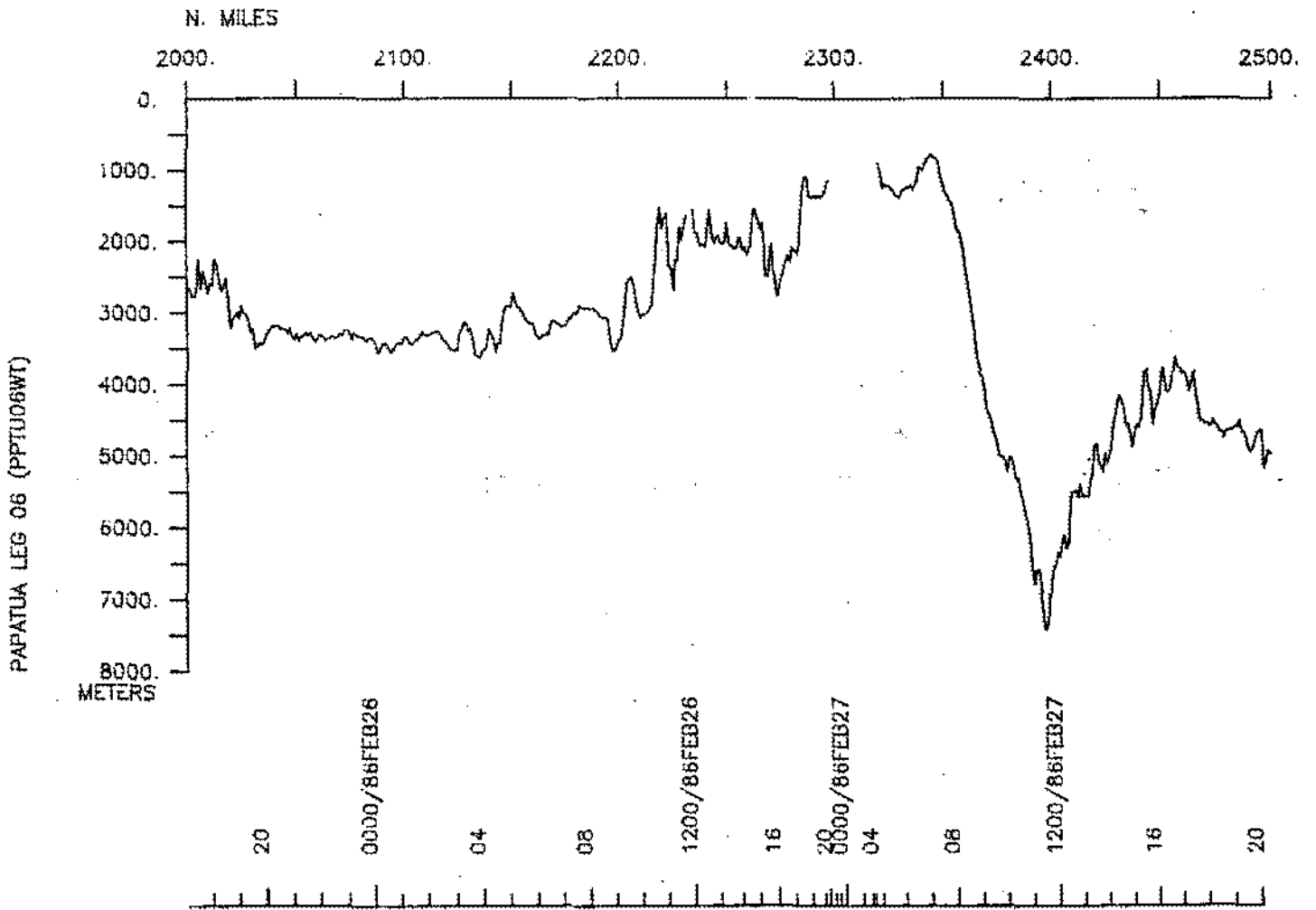
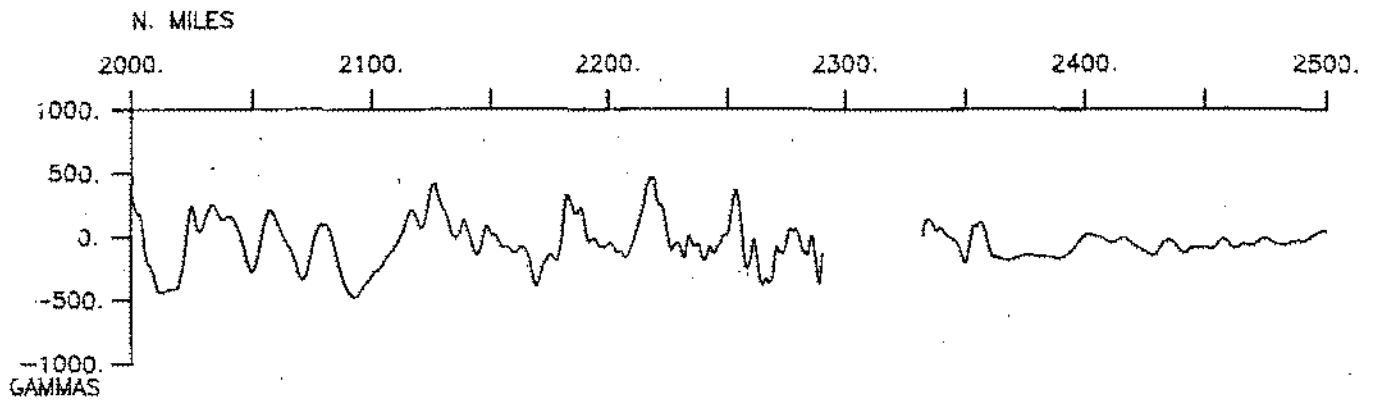


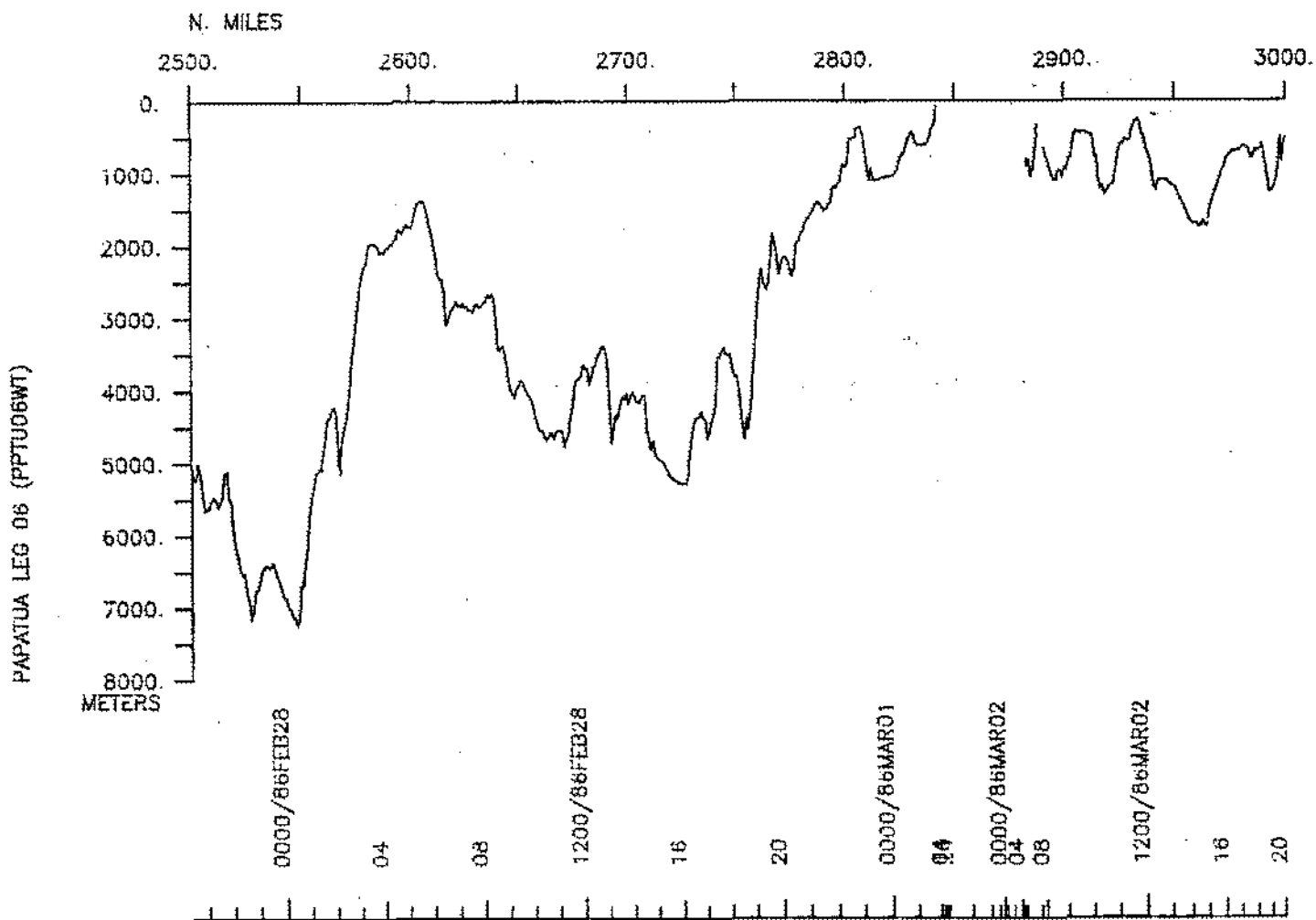
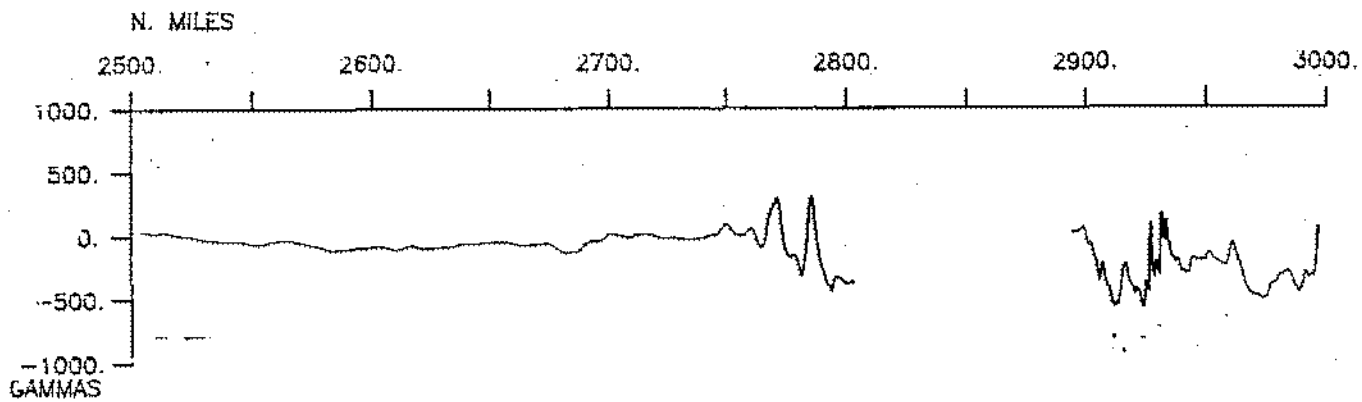
PAPATUA LEG 06 (PPTU06WT)

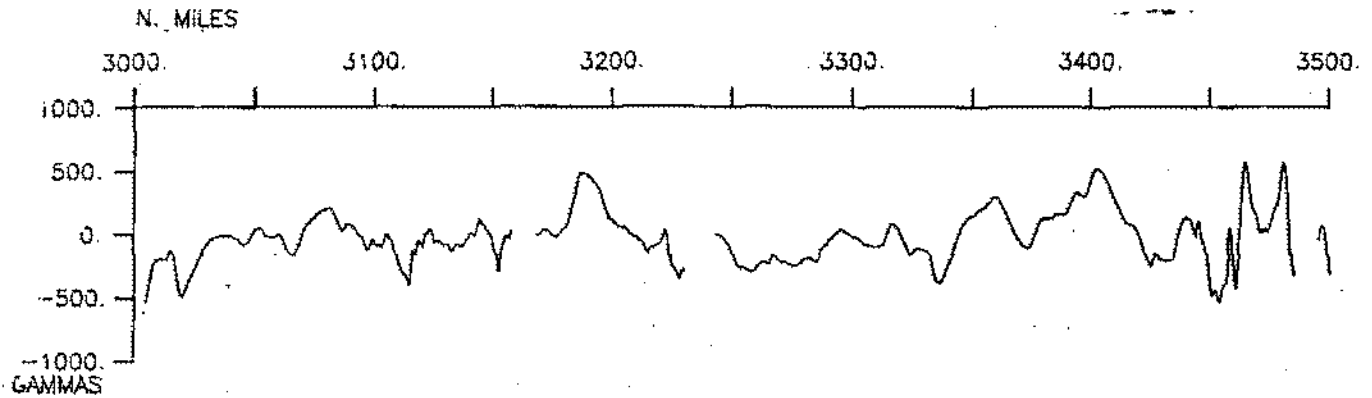




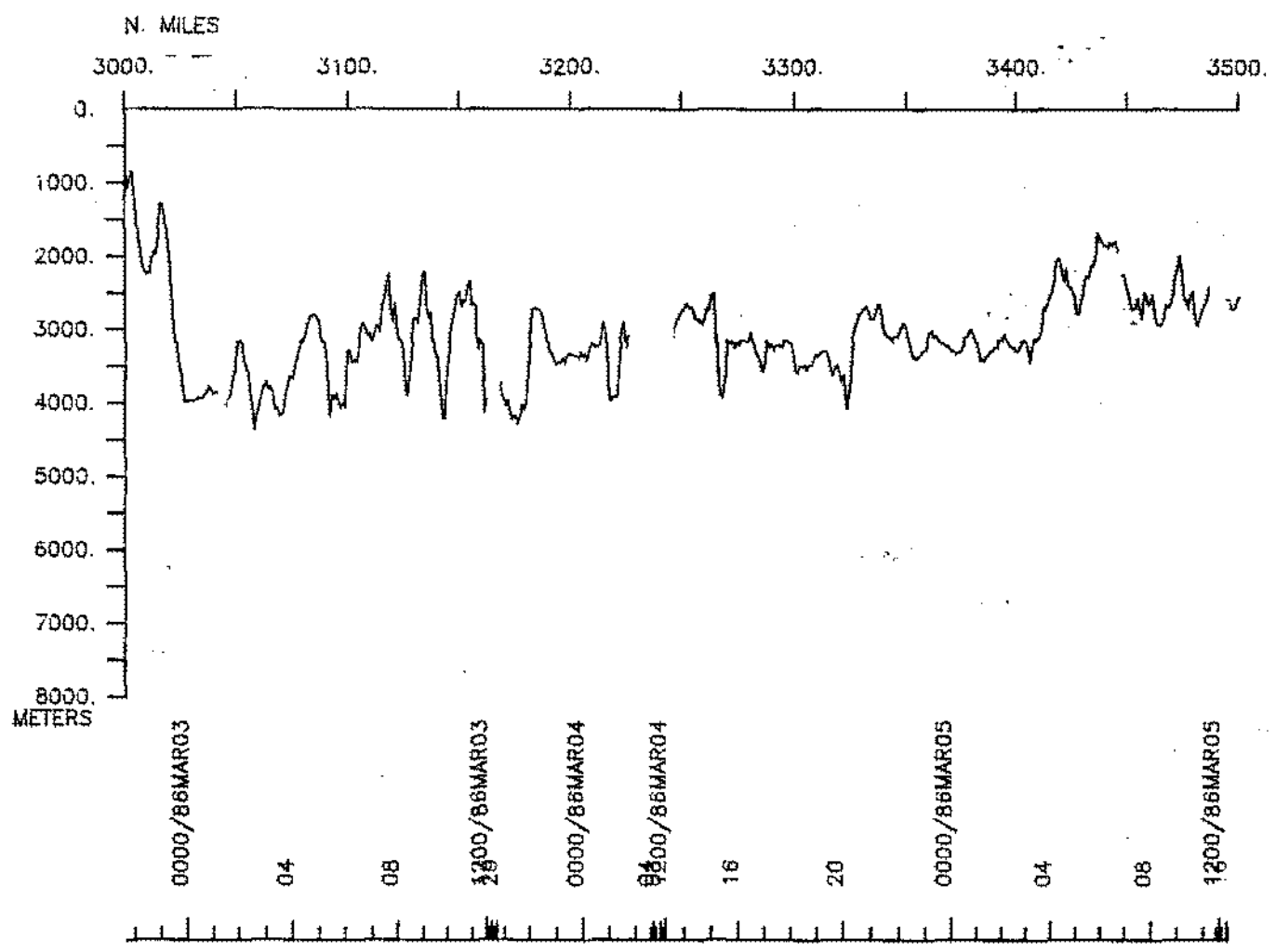


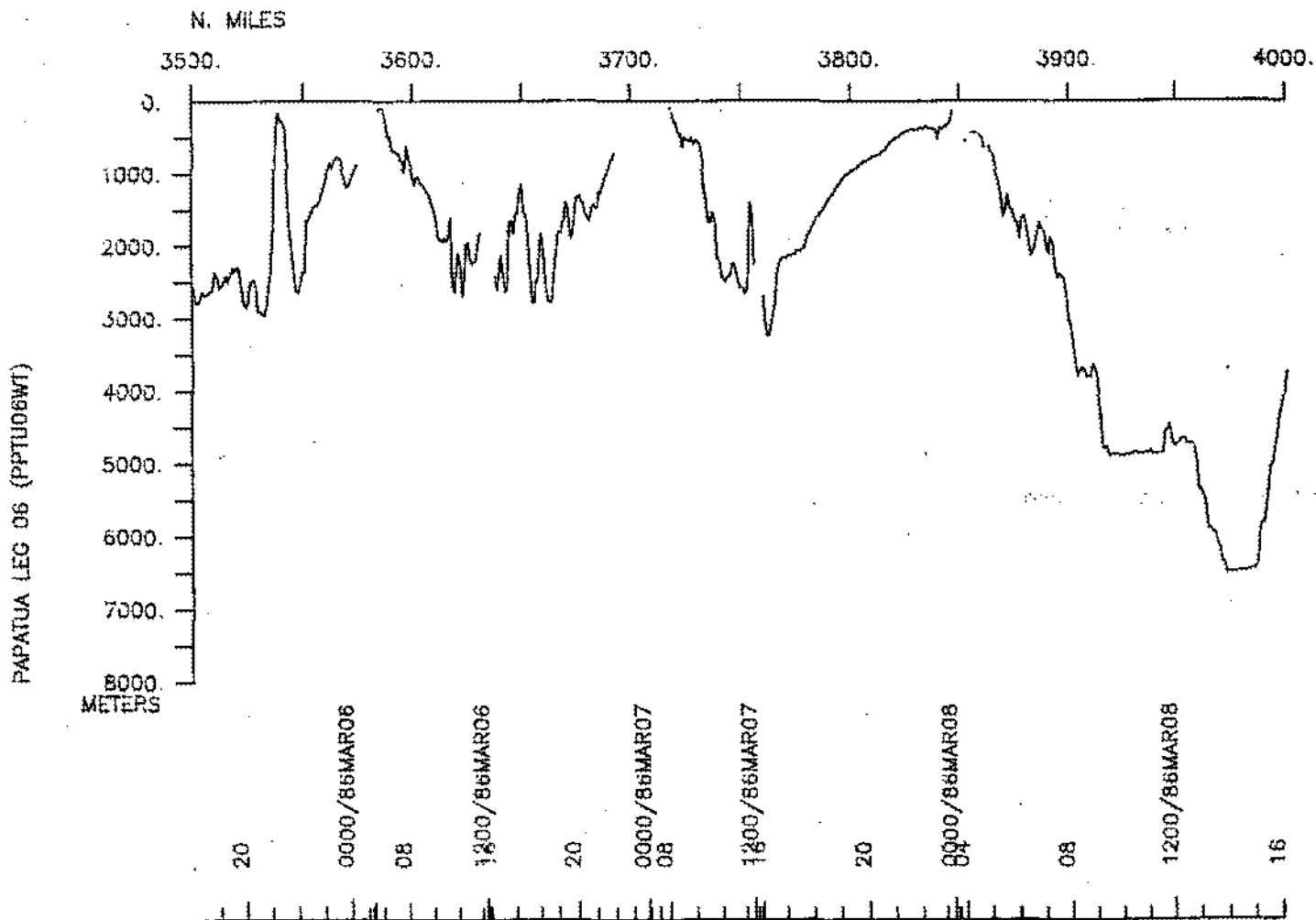
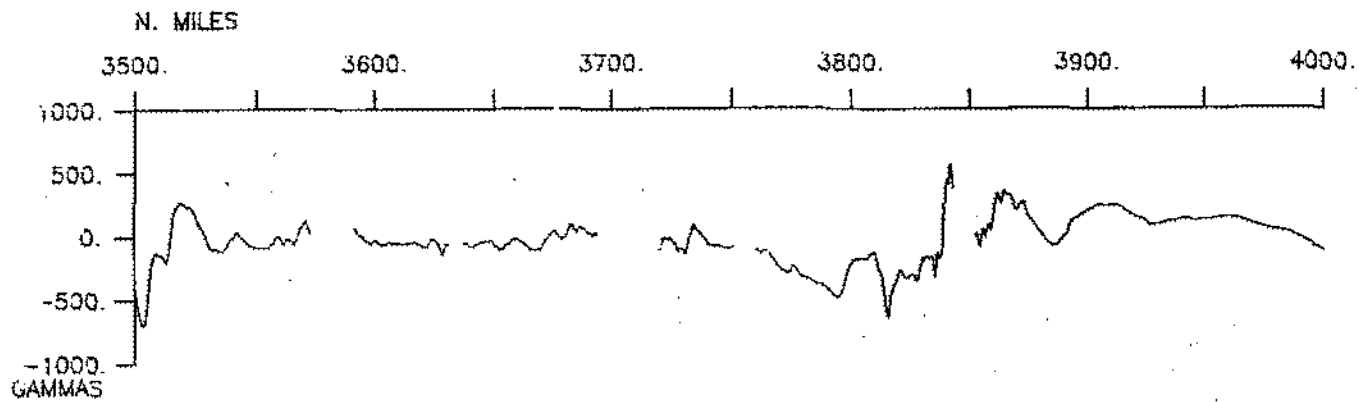


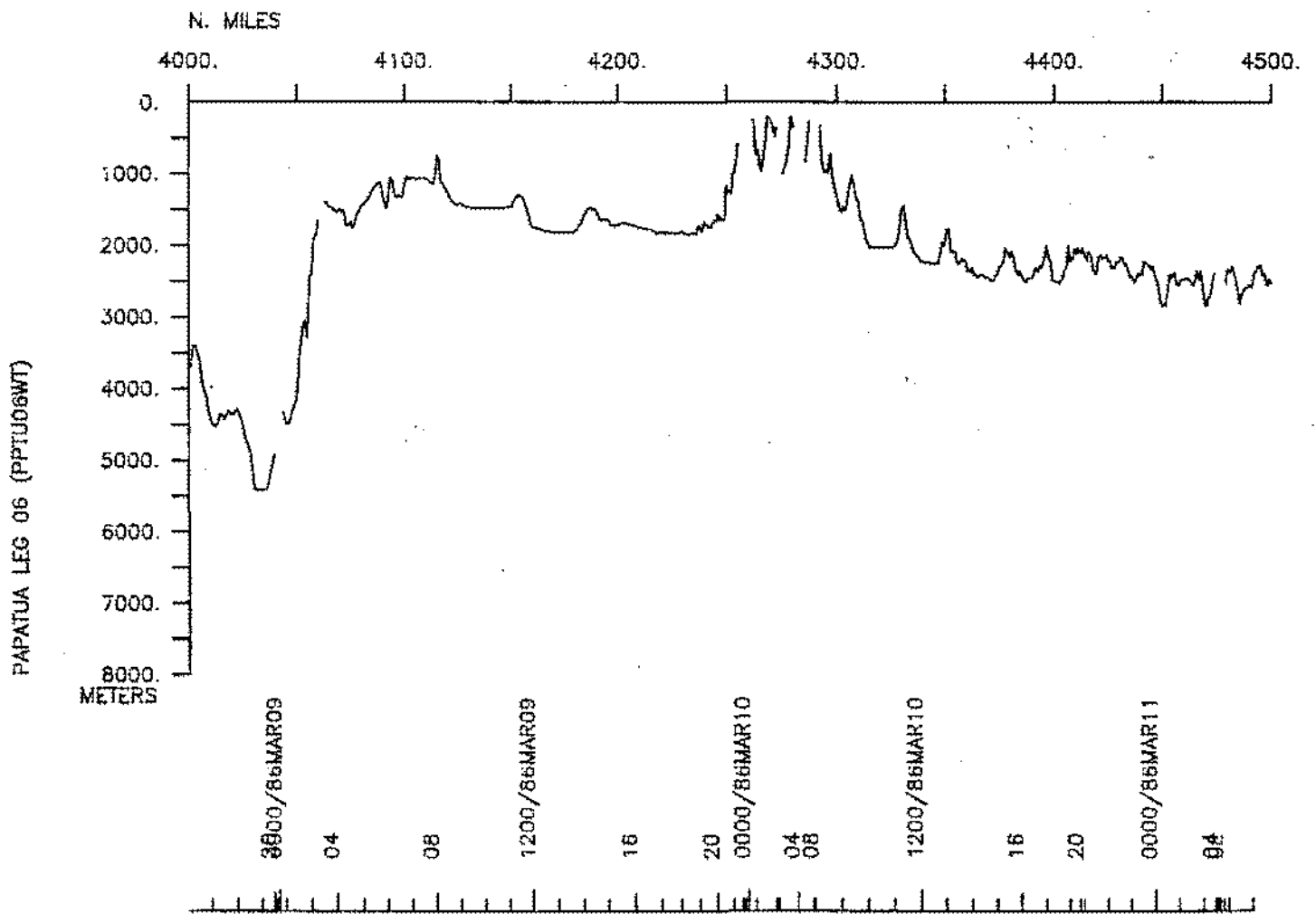
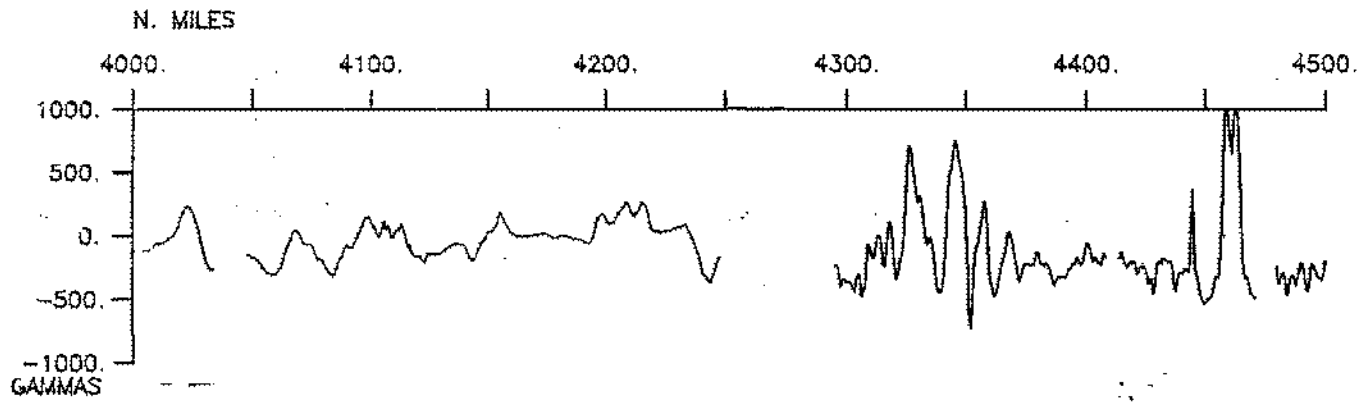


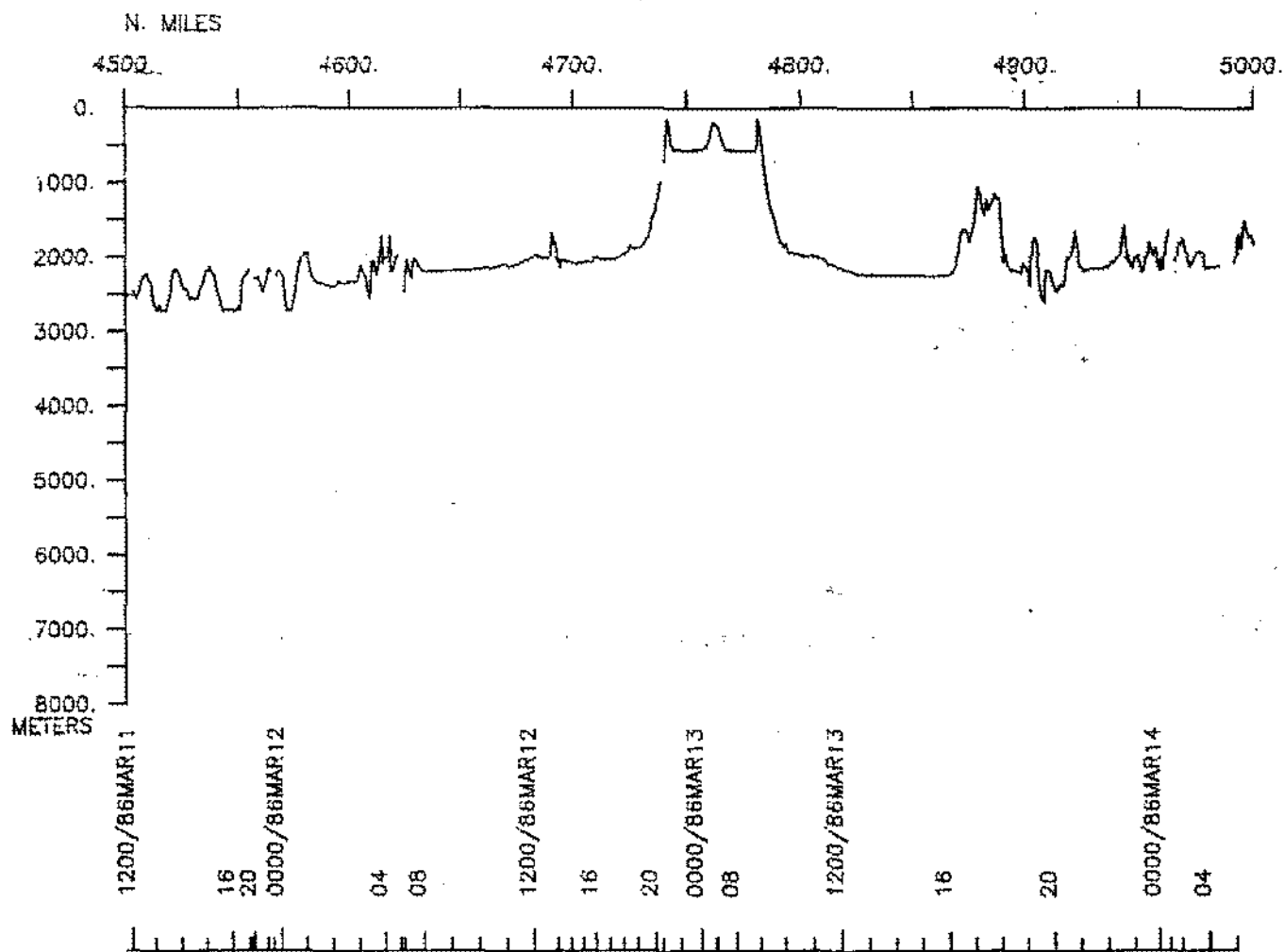
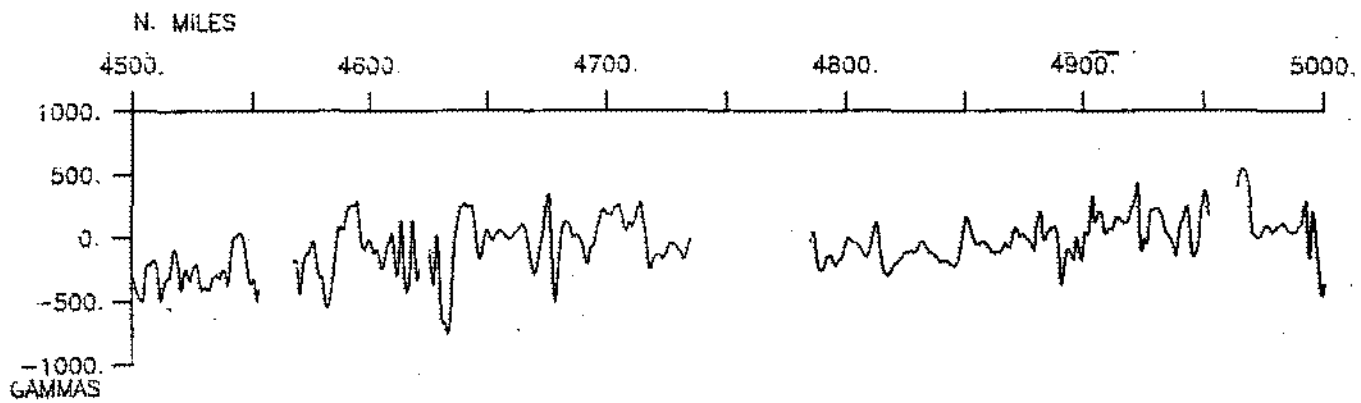


PAPATUA LEG 06 (PPTU06WT)

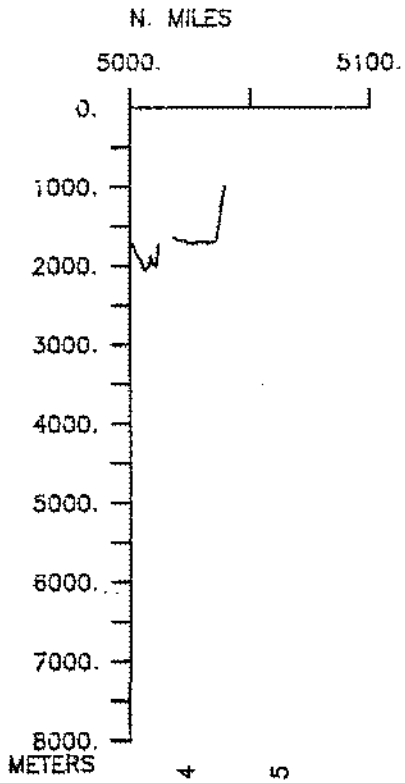
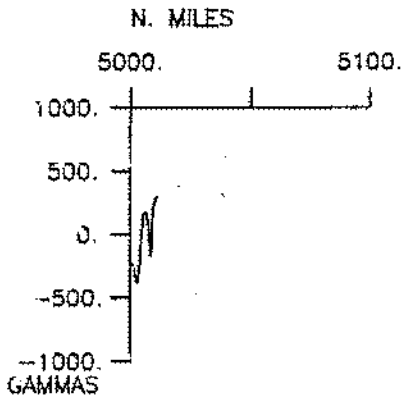






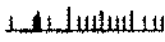


PAPATUA LEG 06 (PPTU06WT)



PAPATUA LEG 06 (PPTU06WT)

08  
1200/86MAR14  
16  
20  
0000/86MAR15



S.I.O. SAMPLE INDEX

(Issued July 1986)

PAPATUA EXPEDITION

Leg 6

Auckland, New Zealand (16 February 1986)  
to  
Rabaul, New Britain (14 March 1986)

R/V T. Washington

Chief Scientist - H. Craig

Post-Cruise Processing and Report Preparation  
by S.I.O. Geological Data Center

Index Encoding Funded by NSF  
Grant Number OCE83-16603  
Index Processing and Report Preparation  
funded in part by SIA

The Sample Index is a first level interdisciplinary listing of time, position, sample identification and disposition of all samples, records and measurements collected on this cruise leg. The index data are encoded at sea by the resident marine technician and processed on shore by the S.I.O. Geological Data Center shortly after the completion of the cruise leg.

Positions are interpolated on the basis of sample time by comparison to a single, edited navigation file. Samples beginning at one time and position and ending at another are entered on two consecutive lines. Disposition and sample type are represented by three and four character codes to permit future computer searches on these parameters. (Listings defining these codes are available from the Geological Data Center.)

GDC Cruise I.D. #220



\*\*\*\*PORTS\*\*\*\*

1710	160286	LGPT B	AUCKLAND, NEW ZEALAND	36-51 S	176-46 E	FPPTU06WT
2335	140386	LGPT E	RABAU, NEW BRITAIN, P.N.G.	4-13 S	152-12 E	FPPTU06WT
2000	180286	LGSS B	NORFOLK ISLAND	29-02 S	167-57 E	FPPTU06WT
0900	190286	LGSS E	NORFOLK ISLAND	29-02 S	167-57 E	FPPTU06WT
0100	210286	LGSS B	MATTHEW ISLAND	22-211S	171-208E	SPPTU06WT
0655	210286	LGSS E	MATTHEW ISLAND	22-219S	171-228E	SPPTU06WT
1930	260286	LGSS B	VANIKORO	11-440S	166-487E	SPPTU06WT
0450	270286	LGSS E	VANIKORO	11-440S	166-487E	SPPTU06WT
0225	010386	LGSS B	HONIARA, GUADACANAL, SOLOMON	9-35 S	160-15 E	FPPTU06WT
2005	010386	LGSS E	HONIARA, GUADACANAL, SOLOMON	9-35 S	160-15 E	FPPTU06WT
2130	010386	LGSS B	SAVO ISLAND, SOLOMONS	9-08 S	159-49 E	FPPTU06WT
0335	020386	LGSS E	SAVO ISLAND, SOLOMONS	9-08 S	159-49 E	FPPTU06WT
0100	060386	LGSS B	DOBU IS., PAPUA, NEW GUINEA	9-450S	150-543E	SPPTU06WT
0645	060386	LGSS E	DOBU IS., PAPUA, NEW GUINEA	9-436S	150-536E	SPPTU06WT
2230	060386	LGSS B	FERGUSSON IS., PAPUA, N.G.	9-428S	150-558E	SPPTU06WT
0800	070386	LGSS E	FERGUSSON IS., PAPUA, N.G.	9-425S	150-552E	SPPTU06WT
2330	070386	LGUS B	KIRIWINA, TROBRIANDS, P.N.G.	8-239S	151-066E	SPPTU06WT
0335	080386	LGUS E	KIRIWINA, PAPUA NEW GUINEA	8-239S	151-066E	SPPTU06WT
2120	090386	LGSS B	NARAGE I. PAPUA NEW GUINEA	4-349S	149-069E	SPPTU06WT
0045	100386	LGSS E	NARAGE I. PAPUA NEW GUINEA	4-337S	149-065E	SPPTU06WT
0200	100386	LGUS B	WAMBU IS. PAPUA NEW GUINEA	4-393S	149-162E	SPPTU06WT
0310	100386	LGUS E	WAMBU IS. PAPUA NEW GUINEA	4-395S	149-170E	SPPTU06WT
0440	100386	LGSS B	GAROVE I. PAPUA NEW GUINEA	4-421S	149-297E	SPPTU06WT
0810	100386	LGSS E	GAROVE I. PAPUA NEW GUINEA	4-425S	149-296E	SPPTU06WT
0105	130386	LGUS B	TALASEA, NEW BRITAIN P.N.G.	5-199S	150-041E	SPPTU06WT
0709	130386	LGUS E	TALASEA, NEW BRITAIN P.N.G.	5-197S	150-042E	SPPTU06WT

\*\*\*\*PERSONNEL\*\*\*\*

#	***NAME***	***TITLE***	***AFFILIATION***	**CRID**
PECS GRD	CRAIG, Dr. H.	CHIEF SCIENTIST	SCRIPPS INSTITUTION	PPTU06WT
PESP GRD	CRAIG, V.	ADM. ASSISTANT	SCRIPPS INSTITUTION	PPTU06WT
PERT STS	COMER, R. L.	RESIDENT TECH.	SCRIPPS INSTITUTION	PPTU06WT
PECT SCG	MOE, R.	COMPUTER TECH.	SCRIPPS INSTITUTION	PPTU06WT
PEXN SIX	CRAWFORD, Dr. A.	GEOLOGIST	TASMANIA	PPTU06WT
PEXN SIX	DUGUMAN, J.	GEOLOGIST	NEW GUINEA	PPTU06WT
PEXN SIX	TAULOI, D.	GEOLOGIST	NEW GUINEA	PPTU06WT
PEXN SIX	BALABE, P.	STUDENT	SOLOMON ISLANDS	PPTU06WT
PESP STS	COSTELLO, J.	STAFF RES. ASSOC.	SCRIPPS INSTITUTION	PPTU06WT
PESP GRD	WOLGAST, D.	STAFF RES. ASSOC.	SCRIPPS INSTITUTION	PPTU06WT
PEXN SIX	KIM, Dr. K. R.	GEOCHEMIST	SEOUL UNIV., KOREA	PPTU06WT
PESP GRD	POREDA, Dr. R. J.	ASST. RES. GEOL.	SCRIPPS INSTITUTION	PPTU06WT
PEST GRD	APITZ, S.	GRAD. STUDENT	SCRIPPS INSTITUTION	PPTU06WT
PEST SIX	FARLEY, K.	STUDENT	YALE UNIVERSITY	PPTU06WT
PEXN SIX	EGGINS, S.	GRAD. STUDENT	TASMANIA	PPTU06WT
PEXN AUS	CARLSON, P.	PILOT	AUSTRALIA	PPTU06WT

\*\*\*\*NOTES\*\*\*\*

#AN 'X' IN THE (B)EGIN/(E)ND COLUMN FOLLOWING THE SAMPLE CODE INDICATES NO  
 #SAMPLE OR DATA RECOVERED. A 'C' INDICATES CONTINUATION OF DATA COLLECTION  
 #FROM BEFORE THE BEGINNING OR AFTER THE END OF A PARTICULAR LEG. (MOORED  
 #BOTTOM INSTRUMENTS, FOR EXAMPLE.) THE NUMBER APPEARING IN THE COLUMNS  
 #BETWEEN THE SAMPLE IDENTIFIER AND THE DISPOSITION CODE, FOR MANY SAMPLE  
 #ENTRIES, IS THE WATER DEPTH IN CORRECTED METERS. POSITIONS ARE IN TENTHS  
 #OF MINUTES.

\*\*\*\*UNDERWAY DATA CURATOR - S. M. SMITH EXT.2752

#GMT	DDMMYY	LOC	T	SAMP	SAMPLE	DISP			CRUISE
#TIME	DATE	TIME	Z	CODE	IDENTIFIER	CODE	LAT.	LONG.	LEG-SHIP

\*\*\*\*LOG BOOKS\*\*\*\*

1810	160286			LBUW	B UNDERWAY WATCH LOG	GDC	36-419S	174-509E	sPPTU06WT
1555	140386			LBUW	E UNDERWAY WATCH LOG	GDC	4-003S	152-100E	sPPTU06WT

\*\*\*\*MAGNETICS\*\*\*\*

0700	170286			MGRA	B MAGNETICS ROLL 1	GDC	34-330S	173-545E	sPPTU06WT
0007	260286			MGRA	E MAGNETICS ROLL 1	GDC	13-144S	170-112E	sPPTU06WT

\*\*\*\*FATHOGRAMS\*\*\*\*

1810	160286			DPRT	B 12KHZ 2SEC SWP R-01	GDC	36-419S	174-509E	sPPTU06WT
1934	190286			DPRT	E 12KHZ 2SEC SWP R-01	GDC	27-051S	167-475E	sPPTU06WT
1936	190286			DPRT	B 12KHZ 2SEC SWP R-02	GDC	27-047S	167-477E	sPPTU06WT
0805	220286			DPRT	E 12KHZ 2SEC SWP R-02	GDC	20-059S	173-213E	sPPTU06WT
0805	220286			DPRT	B 12KHZ 2SEC SWP R-03	GDC	20-059S	173-213E	sPPTU06WT
2007	260286			DPRT	E 12KHZ 2SEC SWP R-03	GDC	11-454S	166-590E	sPPTU06WT
2230	260286			DPRT	B 12KHZ 2SEC SWP R-04A	GDC	11-454S	166-566E	sPPTU06WT
0106	030386			DPRT	E 12KHZ 2SEC SWP R-04A	GDC	9-043S	157-173E	sPPTU06WT
0106	030386			DPRT	B 12KHZ 2SEC SWP R-04B	GDC	9-043S	157-173E	sPPTU06WT
1618	050386			DPRT	E 12KHZ 2SEC SWP R-04B	GDC	10-007S	152-180E	sPPTU06WT
1701	050386			DPRT	B 12KHZ 2SEC SWP R-05	GDC	10-005S	152-184E	sPPTU06WT
0023	060386			DPRT	E 12KHZ 2SEC SWP R-05	GDC	9-462S	150-585E	sPPTU06WT
0039	060386			DPRT	B 12KHZ 2SEC SWP R-06	GDC	9-461S	150-567E	sPPTU06WT
0400	100386			DPRT	E 12KHZ 2SEC SWP R-06	GDC	4-425S	149-249E	sPPTU06WT
0418	100386			DPRT	B 12KHZ 2SEC SWP R-07	GDC	4-435S	149-279E	sPPTU06WT
2117	130386			DPRT	E 12KHZ 2SEC SWP R-07	GDC	3-481S	151-429E	sPPTU06WT
2123	130386			DPRT	B 12KHZ 2SEC SWP R-08	GDC	3-481S	151-441E	sPPTU06WT
1550	140386			DPRT	E 12KHZ 2SEC SWP R-08	GDC	4-000S	152-099E	sPPTU06WT

\*\*\*\*THERMOGRAPHS\*\*\*\*

1800	170286			TGRC	B THERMOGRAPHS 1-22	GDC	32-593S	172-113E	sPPTU06WT
2230	150386			TGRC	E THERMOGRAPHS 1-22	GDC	4-121S	152-100E	sPPTU06WT

#GMT	DDMMYY	LOC	T	SAMP	SAMPLE	DISP			CRUISE
#TIME	DATE	TIME	Z	CODE	IDENTIFIER	CODE	LAT.	LONG.	LEG-SHIP

\*\*\*DREDGES\*\*\*

1211	230286			DRRO	ROCK DREDGE-43	2735M	GCR 18-599S	173-296E	sPPTU06WT
0421	020386			DRRO	ROCK DREDGE-44	795M	GCR 9-101S	159-459E	sPPTU06WT
1725	030386			DRRO	ROCK DREDGE-45	3420M	GCR 9-140S	156-180E	sPPTU06WT
0919	040386			DRRO	ROCK DREDGE-46	4110M	GCR 9-346S	155-355E	sPPTU06WT
1457	050386			DRRO	ROCK DREDGE-47	2730M	GCR 10-021S	152-180E	sPPTU06WT
1250	060386			DRRO	ROCK DREDGE-48	2517M	GCR 9-420S	151-252E	sPPTU06WT
1343	070386			DRRO	ROCK DREDGE-49	2500M	GCR 9-450S	151-334E	sPPTU06WT
2126	080386			DRRO	ROCK DREDGE-50	4890M	GCR 6-279S	148-385E	sPPTU06WT
0612	110386			DRRO	ROCK DREDGE-51	2460M	GCR 3-114S	150-143E	sPPTU06WT
2053	120386			DRRO	ROCK DREDGE-52	968M	GCR 5-105S	150-238E	sPPTU06WT

\*\*\*HYDROCASTS\*\*\*

0852	230286			HCNI	HC-1 STA-2	12B 2670M	GRD 19-006S	173-286E	sPPTU06WT
0059	240286			HCNI	HC-1 STA-3	12B 2756M	GRD 18-082S	173-296E	sPPTU06WT
1453	240286			HCNI	HC-1 STA-4	11B 2420M	GRD 16-297S	173-251E	sPPTU06WT
1524	250286			HCNI	HC-1 STA-5	12B 2740M	GRD 13-473S	171-369E	sPPTU06WT
1350	030386			HCNI	HC-1 STA-6	12B 3940M	GRD 9-141S	156-174E	sPPTU06WT
0459	040386			HCNI	HC-1 STA-7	12B 3994M	GRD 9-351S	155-352E	sPPTU06WT
1229	050386			HCNI	HC-1 STA-8	12B 2720M	GRD 10-027S	152-179E	sPPTU06WT
1953	100386			HCNI	HC-1 STA-9	10B 1998M	GRD 3-305S	149-544E	sPPTU06WT
0346	110386			HCNI	HC-1 STA10	12B 2400M	GRD 3-108S	150-151E	sPPTU06WT
2228	110386			HCNI	HC-1 STA11	12B 2180M	GRD 3-199S	150-037E	sPPTU06WT
0554	120386			HCNI	HC-1 STA12	12B 2413M	GRD 3-514S	150-286E	sPPTU06WT
0136	140386			HCNI	HC-1 STA13	10B 1590M	GRD 3-434S	151-402E	sPPTU06WT
0932	140386			HCNI	HC-1 STA14	10B 1853M	GRD 3-428S	152-098E	sPPTU06WT

#

END SAMPLE INDEX