

KPFA (FM)

2207 Shattuck Avenue

Berkeley 4, Calif.

Miss Jean Hornibrook

Box 9057

Mills College

Oakland 13, Calif.



PRA
FO
PEA



REASON CHECKED

Unclaimed

Unknown

Insufficient address

Moved, Let new address

No such office in state

Do not mail in this envelope

PLEASE POST

PACIFICA RADIO AWARDS CONCERT

NEW MUSIC by SIX AMERICAN COMPOSERS

In Premiere Performance

. . . The award-winning works from the Pacifica Foundation Directors' Awards Competition to encourage young composers deserving of recognition

GERHARD SAMUEL, *Conductor*

PROGRAM

- | | |
|---|------------------|
| * Concertante for Harpsichord, Oboe and Strings | CHARLES WUORINEN |
| * Tre Laude (Trio for Instruments) | ROBERT LOMBARDO |
| * Song Cycle on poems by William Blake | PHILIP WINSOR |
| Quartet for Clarinet and Strings | DONALD MARTINO |

Intermission _____

- | | |
|--|------------------|
| Concerto da Camera for Viola and Chamber Orchestra | WILLIAM SYDEMAN |
| Variations for Sextet | PAULINE OLIVEROS |

* HONORABLE MENTION

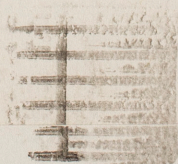
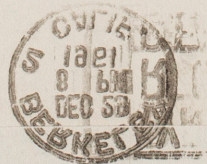
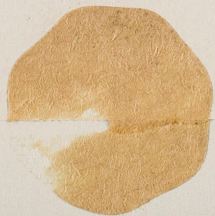
8:30 P.M. FRIDAY, JANUARY 12TH, 1962
THE SAN FRANCISCO MUSEUM of ART
CIVIC CENTER

Reception following the Concert at the Museum

Tickets Available from
KPFA (FM)
2207 Shattuck Avenue
Berkeley TH 8-6767

Campus Records
Telegraph and Bancroft
Berkeley

General Admission	\$2.00
Museum Members	\$1.50
Students	\$1.00



PACIFICA
FOUNDATION

presents its

RADIO AWARDS CONCERT

PREMIERE PERFORMANCE OF MUSIC

BY SIX AMERICAN COMPOSERS

CHOSEN IN NATIONAL COMPETITION

JANUARY 12, 1962

8:30 P.M.

SAN FRANCISCO MUSEUM OF ART

*Reception in the Sculpture Court
after the concert*

SINCE ITS FORMATION in 1949 Pacifica Foundation has championed the cause of contemporary music through its programs on KPFA (FM) in Berkeley, and more recently on KPFK in Los Angeles and WBAI in New York.

With the financial assistance of a member of the Board of Directors of the Foundation, the Directors' Awards in Musical Composition were announced in 1960. The judges selected three prize-winning works and three honorable mentions—and this concert completes the Foundation's recognition of these composers.

The intentions of the Directors are best stated in the original conditions of the Competitions . . .

. . . The guarantee of a good performance for a musically-aware audience greatly increases the value of the Awards. The talented and serious composer today deserves nothing less. We regard such conditions as vital to the proper appreciation and ultimate judgment of new music.

PROGRAM



GERHARD SAMUEL, *Conductor*

CHARLES WUORINEN (1938), Concertante for Harpsichord,
Oboe and Strings

Prelude — Sonata—	MARVIN TARTAK, <i>harpsichord</i>
Interlude — Recitative—	LELAND LINCOLN, <i>oboe</i>
Interlude — Rondo, Postlude	KENT ROSE, <i>violin</i>
	ELIZABETH BELL, <i>viola</i>
	SALLY KELL, <i>cello</i>

ROBERT LOMBARDO (1932), Tre Laude

Mesto	WALTER SUBKE, <i>flute</i>
Lirico	ELIZABETH BELL, <i>viola</i>
Recitativo; fuga; recitativo	ALICE OLSEN, <i>bass</i>

PHILIP WINSOR (1938), Song Cycle on Poems by William Blake

TEXTS

The Sick Rose

O Rose, thou are sick!
The invisible worm,
That flies in the night,
In the howling storm,

Has found out thy bed
Of crimson joy;
And his dark secret love
Does thy life destroy.

The Fly

Little fly,
Thy summer's play
My thoughtless hand
Has brush'd away.

Am not I
A fly like thee?
Or art not thou
A man like me?

For I dance,
And drink, and sing,
Till some blind hand
Shall brush my wing.

If thought is life
And strength and breath,
And the want
Of thought is death;

Then am I
A happy fly,
If I live
Or if I die.

Earth's Answer

Earth rais'd her head
From the darkness dread
and drear.
Her light fled,
Stony dread!
And her locks cover'd with
grey despair.

"Prison'd on wat'ry shore,
Starry jealousy does keep
my den:
Cold and hoar,
Weeping o'er,
I hear the father of the
ancient men.

"Selfish Father of Men!
Cruel, jealous, selfish Fear!
Can delight,
Chain'd in night,
The virgins of youth and
morning bear?

"Does spring hide its joy
When buds and blossoms grow?
Does the sower
Sow by night,
Or the ploughman in
darkness plough?

"Break this heavy chain
That does freeze my
bones around.
Selfish! Vain!
Eternal bane!
That free Love with
bondage bound"

CAROL BOGARD, *soprano*
JAMES STANDARD, *baritone*
WALTER SUBKE, *flute*

JAMES RUSSELL, *bass clarinet*
RUGGIERO PELOSI, *violin*
SALLEY KELL, *cello*

WILLIAM SYDEMAN (1928), *Concerto da Camera for Viola
and Chamber Orchestra*

Lento espressivo
Allegretto

Recitativo agitato
Grazioso

NATHAN RUBIN, *solo viola*
WALTER SUBKE, *flute*
JAMES RUSSELL, *clarinet*
VIRGINIA OJEDA, *bassoon*

NELSON GREEN, *horn*
KENT ROSE, *violin*
RUGGIERO PELOSI, *violin*
ALICE OLSEN, *bass*

INTERMISSION

DONALD MARTINO (1931), *Quartet for Clarinet and Strings*

Andantino cantabile
Introduction: theme and
variations
Allegretto

MORTON SUBOTNICK, *clarinet*
KENT ROSE, *violin*
ELIZABETH BELL, *viola*
SALLY KELL, *cello*

PAULINE OLIVEROS (1932), *Variations for Sextet*

WALTER SUBKE, *flute*
MORTON SUBOTNICK, *clarinet*
NELSON GREEN, *horn*

MARVIN NELSON, *trumpet*
SALLY KELL, *cello*
DWIGHT PELTZER, *piano*

WE INVITE YOUR SUPPORT . . .

of KPFA (FM), Pacifica Foundation's listener-supported station in Berkeley. Through recordings, foreign transcriptions, discussions and concerts, our listeners enter the lively world of new music, and the best of older expressions.

Music, traditional and contemporary, is only one part of our programming. You may select from drama, news, children's programs, commentators and crusaders, politicians and poets. Our point of view is a simple one . . . you, the listener, should have the privilege of choosing and rejecting from a wide range of ideas and expressions. We ask your support for this ideal. Subscriptions and contributions are our only source of income.

The Pacifica Radio Awards Concert would not have been possible without the generous help of . . .

Robert Craft, Alfred Frankenstein, and Roger Sessions, who served as judges of the Competition . . .

and George Mardikian, who provided refreshments and staff for the reception which follows the concert. We cordially invite the audience to attend.

GRANDS MAITRES

CHARLES WILKINSON (1938) Concerto for Harp and Strings

Prologue - Romance
Interlude - Romance
Interlude - Romance
Interlude - Romance
Interlude - Romance
Interlude - Romance

ROBERT LOMBARDI (1932) The Land

Mesto
Lento
Ritornello
Ritornello
Ritornello

PHILIP WINSON (1938) Song Cycle for Soprano and William Blake

The Rose
The Rose

O Rose, thou art still
The rose's bloom
That dies in the night
In the hazy dawn
Has found out thy fate
Of crimson hue
And has dark secret love
Does thy life deny
For I trace
And find
The rose that died
That found its way
To the heart of the
And through the heart
And the heart
Of change and death

Design and Typography by GRAPHIC ARTS ASSOCIATES, Sausalito, California

SAN FRANCISCO MUSEUM OF ART

VETERANS BUILDING • CIVIC CENTER • SAN FRANCISCO 2, CALIFORNIA

JANUARY 1962



SAN FRANCISCO MUSEUM OF ART

VETERANS BUILDING

• CIVIC CENTER

JANUARY 1962

• SAN FRANCISCO 2, CALIFORNIA



**Above: Red Gate and Trees, 1938, watercolor, by Raoul Dufy.
Gift of Mrs. Jacie B. Raiss.**

**Front cover: Andalusian, bronze, by Richard O'Hanlon.
Gift of the Membership Activities Board.**

EXHIBITIONS

Jan. 10—Feb. 25

INCREASE IN RICHES: THE GROWTH OF THE MUSEUM'S COLLECTIONS, 1959-1962

As a tribute to all who have helped create the Museum's Collections of painting, sculpture and graphic art, a selection of the works added to the Collections in the last three years is shown.

Through Jan. 7

A NEW CHURCH AND ITS ART

In the Greek Orthodox Church of the Ascension in Oakland, architecture, mural art and ornament have been used to create a unified expressive form. Reid, Rockwell, Banwell and Tarics were the architects for the project and the murals were designed by Brian Tivel.

Through Jan. 7

ART OF SAN FRANCISCO

Painting, sculpture and architecture since 1871 by artists associated with the San Francisco Art Institute. Presented on the occasion of the 90th year of the San Francisco Art Institute.

Jan. 10—Feb. 4

PAINTINGS AND DRAWINGS BY ARIEL PARKINSON

In approximately twenty-five works, the artist expresses her very personal sense of the beautiful.

Through Jan. 14

THE TURN OF THE CENTURY IN PRINTS AND DRAWINGS

Prints and drawings from the Museum's collection and from private collections in the Bay Area have been selected to illustrate the substantial contributions made by the graphic arts of the 19th Century to the art of the 20th Century.

Through Jan. 14

JAPANESE PRINTS FOR FESTIVE OCCASIONS

Old Master prints from the collection of Mr. and Mrs. Edwin Grabhorn.

Jan. 16—Feb. 25

CONTEMPORARY PRINTS FROM JAPAN

An international exchange exhibition of one hundred contemporary prints selected with the assistance of experts in Japan and sponsored by the Memorial Union, Oregon State University.

Through Jan. 21

COLOR IN THE PHOTOGRAPHIC PRINT

In this group of small photographs, Oliver L. Gagliani explores the emotional and dramatic qualities color gives the photographic image.

Hours:

GALLERIES

Tuesday through Friday, noon to 10 p.m.
Saturday, Sunday, Monday, 1 to 6 p.m.
The Museum will be CLOSED on Monday, Jan. 1.

LIBRARY

Monday through Friday, 2 to 5 p.m.
Tuesday and Thursday, 7 to 9 p.m.

RENTAL GALLERY

Monday through Friday, 1 to 5 p.m.
Tuesday, Wednesday, Thursday, 7 to 8:30 p.m.
Saturday and Sunday, 2 to 5 p.m.

Telephone: HEmlock 1-2040

EVENTS

Each Week:

Sundays at 12 noon

ART IN PRESENT TENSE, the Museum's program over Station KAFE (98.1 megacycles, FM) is broadcast at noon each Sunday. Miss Juanita Harrell will act as interviewer, discussing with the Director, George D. Culler, staff members, artists and others, aspects of the Museum's program of interest to KAFE listeners. "Art Around the Bay" will continue as the subject of the programs on the first Sunday of each month.

Sundays at 3

Lecture-gallery tours on current exhibitions by Museum staff members:

- Jan. 7 Guest speaker, Mr. R. F. Olwell, designer of the Church of the Ascension
- Jan. 14 John Humphrey:
New Accessions
- Jan. 21 Anneliese Hoyer:
Contemporary Japanese Prints
- Jan. 28 John Humphrey:
New Accessions

Tuesdays at 10

Studio: Art for the Layman
(see Announcements)

Wednesdays at 8

Programs scheduled in January are:

- Jan. 10 Reception and preview of the exhibition of Paintings and Drawings by Ariel Parkinson
- Jan. 17-24-31 A series of three lectures by George D. Culler, "How Does the Collection Grow?"

Saturdays

Children's Saturday Art Classes
(see Announcements)

Special Events This Month:

Friday, Jan. 12—8:30 p.m.

Pacifica Radio Awards Concert
(see Announcements)

Tuesday, Jan. 16—8:30 p.m.

Concert, California String Quartet
(see Announcements)

Wednesday, Jan. 31—5 to 8 p.m.

Members' Preview, Spring Rental Gallery
(Exhibition dates: Feb. 1-25)

SPECIAL ANNOUNCEMENT

CHILDREN'S SATURDAY ART CLASSES

The children's Saturday classes will be revised and expanded beginning February 3rd. This spring semester will consist of 17 class meetings. Hereafter the children's classes will operate on the basis of a fall semester, spring semester, and two summer semesters. Registration for the spring semester will be as follows:

Members' children: Jan. 11 through Jan. 22, 1962

Non-members' children: Jan. 23 through Jan. 31, 1962

Registrations will be accepted in order of receipt by phone, in person or by mail and fees MUST be paid before the first class meeting.

Fees: Members' children, no tuition, \$4.00 materials fee. (23¢ per session)

Non-members' children, tuition, \$9.00, \$4.00 materials fee.

Class schedule:

9:00 a.m.—10:00 a.m. Ages 6 through 9

10:30 a.m.—11:30 a.m. Ages 10 through 14

12:00 a.m.—1:00 p.m. Advanced class,
by appointment

1:30 p.m.—2:30 p.m. Ages 6 through 9

2:45 p.m.—3:45 p.m. Ages 10 through 14

A greater variety of materials (i.e. inks, chalks, varied sculptural media, etc.) to be used in class necessitates the addition of a materials fee. Fees for other semesters will vary depending on the length of the semester.

See over for ANNOUNCEMENTS

ANNOUNCEMENTS

STUDIO: ART FOR THE LAYMAN The Studio, under the direction of Mr. Henry Schaefer-Simmern, meets on Tuesday mornings at 10. Enrollment by arrangement with Mr. Schaefer-Simmern, THornwall 5-0404. Fee: \$5 per session.

NEW RADIO PROGRAMS KCBS (740 AM; 98.9 FM): one Sunday each month, at 12:15 p.m., the Museum is featured in **ART IN ACTION**, a segment of **WEEKEND WITH KCBS**; moderated by Fred Wilcox.

KTIM (1510 AM; 100.9 FM), San Rafael: twice monthly (consult local paper for dates), artists and others from Marin of interest to Museum Members will be interviewed by Karl Barron on the 3 p.m. program, **MEET A MARIN NEIGHBOR**.

KNBC (680 AM; 99.7 FM) LIVE AND LEARN, Sunday nights at 10:30, will present Museum personnel in two panel discussions moderated by Budd Heyde. January 28, George D. Culler and Anneliese Hoyer will compare European and American art museums.

PACIFICA RADIO AWARDS CONCERT — Friday, Jan. 12, 8:30 p.m.

Premiere performance of new music by six young American composers, selected in a national competition by Roger Sessions, Robert Craft and Alfred Frankenstein. The Competition was sponsored by Pacifica Foundation to encourage young composers deserving of recognition. The program, which will be conducted by Gerhard Samuel, is to be recorded for foreign broadcast.

Concertante for Harpsichord, Oboe and Strings
Charles Wuorinen

Tre Laude (Trio for Instruments)

Robert Lombardo

Song Cycle on Poems by William Blake

Philip Winsor

Quartet for Clarinet and Strings

Donald Martino

Concerto da Camera for Viola and Chamber Orchestra

William Sydeman

Variations for Sextet

Pauline Oliveros

Tickets are available from KPFA (FM), 2207 Shattuck Ave., Berkeley, TH 8-6767, or at the Museum on the evening of the concert. General admission, \$2.00; Museum Members, \$1.50; Students, \$1.00.

CONCERT, CALIFORNIA STRING QUARTET — Tues., Jan. 16, 8:30 p.m.

First in a series of three concerts (other dates: Mar. 27 and May 1).

Program for Jan. 16:

String Quartet in D Minor Mozart

String Quartet (1957)* Gunther Schuller

String Quartet in F Major Beethoven

*(preview performance at 7:30 p.m.)

Series tickets: General, \$5.75; Museum Members, \$5.25. Single Concerts: General, \$2.00; Museum Members, \$1.75. Available in advance by mail or phone: California String Quartet, 87 Shoreview Ave., S. F. 21 (EV 6-8616), or at the Museum on the evenings of the concerts.

BOOKSHOP

ANNUAL JANUARY CLEARANCE:

All reproductions at 20% discount
Many books at special prices

NEW BOOKS:

THE LAST WORKS OF HENRI MATISSE:

LARGE CUT GOUACHES, edited by Monroe Wheeler. 34 plates, 13 in color. \$4.50

HISTORY OF IMPRESSIONISM, by John Rewald. 662 pages; 86 plates in color. \$20.00

kpfa
FM 94.1 MC

PACIFICA
LISTENER
SUPPORTED
RADIO

2207 SHATTUCK AVE.
BERKELEY 4, CALIF.
THORNWALL 8-6767

Pauline Oliveros
Festival House
Center Harbor
New Hampshire

Dear Pauline:

Jacques Berges assured us that the commission was a fact. Frankly, we have no correspondence to this effect and therefor can only pass on this assurance. Since Mr. Berges is out of the country there is not much more that can be done at this time. The commission is for \$300.

The idea of the commission (as I understand it) is to encourage an award winner of last year's competition to write a composition within the framework of this year's competition. I am enclosing a copy of the conditions pertaining to this year's competition for your information. You will notice that the submission deadline is November 1, but I do not see how this applies to you. The choice of instruments does, however, since the commission is for the purpose of providing a first performance on the awards concert in April.

Your European trip sounds very exciting. Best of luck. We expect you to knock them dead. A composer-friend of mine from Illinois will also be in Holland. Since he plans to be in the electronics studios of Phillips- (where ever that is) you might be interested in knowing him. His name is Will Gay Bottje in case you run across him. If I hear from him I will send you a more specific address.

I see by your letter that I have missed you in New Hampshire so I will send the letter and awards prospectus direct to your address in Holland.

Best Wishes,

Will Ogdon

Wilbur Ogdon
Music Director

Aug 25. 62



news

**For release:
IMMEDIATELY**

PACIFICA FOUNDATION

announces its second

RADIO AWARDS IN MUSICAL COMPOSITION

The guarantee of a good performance, under ideal conditions, for a musically-aware audience, is an integral part of the Awards and greatly increases their value. The talented and serious composer today deserves nothing less. We regard such conditions as vital to the proper appreciation and ultimate judgment of new music.

Since its formation in 1949, Pacifica Foundation has championed the cause of contemporary music through its programs on KPFA in Berkeley, and more recently on KPFK in Los Angeles and WBAI in New York. As noncommercial radio supported by listener subscriptions, these stations are free to explore all new music. In 1960, Pacifica sponsored a national music competition for composers. The works chosen by the judges were performed in concert and recorded for distribution to noncommercial stations in this country and abroad. Encouraged by the success of the initial venture, we are pleased to announce another Competition for the Radio Awards in Musical Composition. These conditions regulate the competition:

1. All composers living in the U. S., with the exception of the Prize Winners of the first Pacifica Competition, are eligible.

2. Compositions to be eligible for consideration must be for mixed instrumental ensembles--that is, not all strings or winds--of not less than three nor more than seven instruments.

The following instruments and only these are available: violin, cello, bass, flute, clarinet (not doubling bass clarinet), oboe (not doubling English horn), bassoon (not doubling contrabassoon), trumpet, piano, percussion for one player. Voices may not be included. Works must be between 10 and 20 minutes in length.

To be eligible a composition cannot have had a professional performance.

Only scores should be submitted, and the composer assumes the responsibility for providing instrumental parts, should his music be chosen for performance. Pacifica Foundation will pay no royalty fees or rental for instrumental parts for those compositions awarded cash prizes.

3. Entries must be received between April 1 and November 1, 1962. Each entrant must mark his score with a nom de plume, and must send with the score a sealed envelope which bears the nom de plume on the outside and his name and address inside.

4. Up to three prizes of \$300 each will be awarded. In addition the judges may select several compositions as worthy of Honorable Mention. Each Award and Honorable mention includes the assurance of a well-rehearsed public performance by professional musicians and a broadcast over Pacifica's three stations. In addition, the performances will be recorded for distribution to educational and foreign radio stations.

5. The Awards will be announced on January 2, 1963. The concert of award-winning compositions will be given in April, 1963.

6. Submit entries to: PACIFICA RADIO AWARDS, KPFA, 2207 Shattuck Avenue, Berkeley 4, California.

CALL BILL PLOSSER FOR FURTHER INFORMATION

A NONPROFIT EDUCATIONAL CORPORATION
OPERATING KPFA IN NORTHERN CALIFORNIA
AT 2207 SHATTUCK AVENUE, BERKELEY 4,
KPFK IN SOUTHERN CALIFORNIA AT
5636 MELROSE AVENUE, LOS ANGELES 38,
AND WBAI IN NEW YORK CITY, AT
30 EAST 39TH STREET, NEW YORK 16

PACIFICA FOUNDATION

2207 SHATTUCK AVENUE, BERKELEY 4, CALIFORNIA

July 6, 1961

OFFICERS

HAROLD WINKLER
PRESIDENT

TERRELL T. DRINKWATER
FIRST VICE PRESIDENT

Miss Pauline Oliveros
405 Hoffman
San Francisco, Calif.

Dear Miss Oliveros:

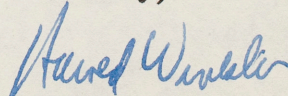
After receiving the decision of the judges for our Directors' Awards in Musical Composition, I am pleased to tell you that your Variations for Sextet was one of the three prize-winning works. I congratulate you, and you should consider this award a distinct achievement in view of the many entries we received in the Competition.

As stated in the regulations of the Competition, you will receive a \$300 prize. A check should be sent to you in the near future. It is also understood that Pacifica Foundation will present the first performance of your prize-winning work in public concert. Arrangements and details for the performance of all music will be handled by KPFA's Music Director, Glenn Glasow.

We have not yet announced the awards publicly, since there are some considerations about the best way to do this. We would appreciate it if, for the time being, you held this information in confidence.

Again, my congratulations.

Sincerely,



Harold Winkler
President

HW:d
c.c. Glenn Glasow

94.1 MC, Channel 231
Phone: THornwall 8-6767

KPFA (FM)

L. STEIN
932 SO. SIERRA BONITA
LA. 38
2207 Shattuck Avenue
Berkeley 4, California

A NON-PROFIT LISTENER-SUBSCRIPTION RADIO STATION

July 14, 1961

Miss Pauline Oliveros
405 Hoffman
San Francisco, Calif.

Dear Pauline:

May I add my congratulations to those from Dr. Winkler, president of Pacifica Foundation. We will mail a check to you as soon as you give us the address to which you wish it sent.

Our immediate concern is finding the most effective way to announce the prize winners and to arouse interest in the concert which will follow next fall. To do this, it is quite important that we have from you a short biographical sketch of details which you think interesting or important for people to know, and a glossy print of yourself, preferably a large one, say 8" x 10". Just when the announcement will be made is not quite certain, since we would like to do it simultaneously at our three stations in New York, Los Angeles and Berkeley. So, again we ask you to say nothing about your new honors until it is officially announced.

My role in the Competition is purely a secretarial one, but I will be in charge of the performances. I might remind you that one of the conditions of the awards was that the performance which we present be the first one. I can tell you that I regard an excellent, rehearsed performance as the most important part of these awards. I will be asking you for parts for the musicians in the near future, but as stated above what immediately concerns me is information and a picture for a news release.

Best regards,

Glenn L. Glasgow XX
Glenn L. Glasgow
Director of Music

GLG:d

KPFA (FM)

2207 Shattuck Avenue

Berkeley 4, Calif.

PLEASE POST

PACIFICA RADIO AWARDS CONCERT

NEW MUSIC by SIX AMERICAN COMPOSERS

In Premiere Performance

. . . The award-winning works from the Pacifica Foundation Directors' Awards Competition to encourage young composers deserving of recognition

GERHARD SAMUEL, *Conductor*

PROGRAM

- | | |
|---|------------------|
| * Concertante for Harpsichord, Oboe and Strings | CHARLES WUORINEN |
| * Tre Laude (Trio for Instruments) | ROBERT LOMBARDO |
| * Song Cycle on poems by William Blake | PHILIP WINSOR |
| Quartet for Clarinet and Strings | DONALD MARTINO |

Intermission _____

- | | |
|--|------------------|
| Concerto da Camera for Viola and Chamber Orchestra | WILLIAM SYDEMAN |
| Variations for Sextet | PAULINE OLIVEROS |

* HONORABLE MENTION

8:30 P.M. FRIDAY, JANUARY 12TH, 1962
THE SAN FRANCISCO MUSEUM of ART
CIVIC CENTER

Reception following the Concert at the Museum

Tickets Available from
KPFA (FM)
2207 Shattuck Avenue
Berkeley TH 8-6767

Campus Records
Telegraph and Bancroft
Berkeley

General Admission	\$2.00
Museum Members	\$1.50
Students	\$1.00

kpfa
FM 94.1 MC

PACIFICA
LISTENER
SUPPORTED
RADIO

2207 SHATTUCK AVE.
BERKELEY 4, CALIF.
THORNWALL 8-6767

December 27, 1961

Pauline Oliveros
405 Hoffman
San Francisco, Calif.

Dear Pauline:

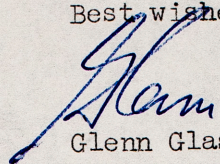
As I'm sure you know, the concert of the prize-winning compositions and honorable mentions from our Directors' Awards Competition is scheduled for January 12, 8:30 in the evening, at the San Francisco Museum of Art. This was the first date which was most advantageous, in that there are no other chamber music concerts and it is also a time when good performers were free. I am sending you an announcement. The order of the program may be changed. At this time I have not heard any of the rehearsals yet, but I have every confidence in Gerhard Samuel and Morton Subotnick, who are in charge of the performances. We are working hard to assure a large and sympathetic audience.

I have the biographical information which you sent. Generally, I am inclined to favor very brief or no program notes at all. However, in the case of these new compositions which have not been heard before, it might be useful to have a few comments about the music from each composer. What you would like said or not said is your prerogative. Would you please let me know if you want me to pass along your own comments on the music to the radio audience, and of course send me those comments.

In a little more formal manner, I would like to say that Pacifica Foundation has contracted with the American Federation of Musicians to record the concert. The original conditions regulating the Competition state: "Recordings will be made for distribution to Pacifica Foundation's other stations, KPFFK and WBAI. These recorded concerts are also intended for distribution to foreign radio stations." We have no intention of using these recordings beyond broadcasting at our own stations and supplying them to noncommercial stations which might be interested. In the case of the latter, we will protect your rights by offering the program for limited broadcast, that is for a one-time-only broadcast. So far, we know definitely that the BBC Third Programme will use it, and I believe Radio Japan, Radio Poland, and several German stations will also want the program.

We all look forward to seeing you at the concert, so that you may collect the accolades of the critics and audience. Do you have any ideas on how we may assure a good, large, audience?

Best wishes,



Glenn Glasow

GG:d
Encls



news

For release:

IMMEDIATELY

SIX PREMIERES IN SPECIAL CONCERT OF CONTEMPORARY MUSIC

Six composers -- the first prize winners and holders of honorable mention in Pacifica Radio's Directors' Awards Competition for original composition -- will have their works premiered at a special concert in San Francisco January 12.

The place: San Francisco Museum of Art, Van Ness and McAllister Sts. The time: 8:30 p.m.

The program will include:

DONALD MARTINO Quartet for Clarinet and Strings
WILLIAM SYDEMAN Concerto da Camera for Viola and Chamber Orchestra
PAULINE OLIVEROS Variations for Sextet
(all of these prize winners)

ROBERT LOMBARDO Tre Laude
PHILIP WINSOR Song Cycle on Poems of William Blake
CHARLES WUORINEN Concertante for Harpsichord, Oboe and Strings
(all of these holders of honorable mention)

Performers will be leading bay area musicians conducted by Gerhard Samuel, conductor of the Oakland Symphony and the San Francisco Ballet, and President of the Composers Forum.

The important NATIONAL competition, which was judged by composer Roger Sessions, conductor Robert Craft, and critic Alfred Frankenstein, was conceived as a way of encouraging composers deserving recognition. Cash awards of \$300 were given the prize winners, but an especially important benefit of the competition is the composer's chance to be HEARD: in this concert at the San Francisco Museum, and later - through tape recording - on the BBC, Radio Poland, Radio Japan, and other foreign stations which have expressed great interest in this Pacifica competition.

Pacifica's own outlets in Los Angeles (KPFK) and New York (WBAI) will join, of course, in broadcasting tapes of the six selected works. The concert will also be heard over KPFA (FM) Berkeley, the original Pacifica station. KPFA is at 94.1 mc.

--more--

CALL BILL PLOSSER FOR FURTHER INFORMATION

kpfa
FM 94.1 MC

PACIFICA
LISTENER
SUPPORTED
RADIO

2207 SHATTUCK AVE.
BERKELEY 4, CALIF.
THORNWALL 8-6767

news

For release:

-2-

Conditions of the Competition were as follows: open to all composers living in the United States regardless of age or professional status; chamber compositions for mixed instrumental ensembles of from three to eight instruments; pieces no shorter than ten minutes and no longer than twenty. In short, Pacifica -- long a crusader for contemporary music -- sought compositions using media "more imaginative and colorful" than the usual.

The youngest composer represented is Philip Winsor, who's 22 and a student at the University of California; none are beyond their early thirties.

Donald Martino, at present on the Yale music faculty, studied with Ernst Bacon at Syracuse University, and with Milton Babbitt and Roger Sessions at Princeton.

William Sydeman, who teaches at the Mannes School in New York, studied at Tanglewood with Petrassi.

Pauline Oliveros lives in San Francisco, teaching classes in group improvisation. She studied with Robert Erickson.

Charles Wuorinen's Third Symphony will soon be released commercially. A New Yorker, he studied with Otto Luening, Vladimir Ussachevsky and Jack Beeson. Although born only in 1938, he has reached Opus 50.

Robert Lombardo, recipient of a Ford grant to work as composer-in-residence at Hastings-on-Hudson High School in New York, studied with Aaron Copland, Boris Blacher and Petrassi.

TICKETS for the January 12 concert are available at KPFA, 2207 Shattuck Ave., Berkeley (TH 8-6767); Campus Records, Telegraph at Bancroft, Berkeley; or at the door preceding the program. They are priced at \$2 for general admission, \$1.50 for Museum members, and \$1 for students.

--30--