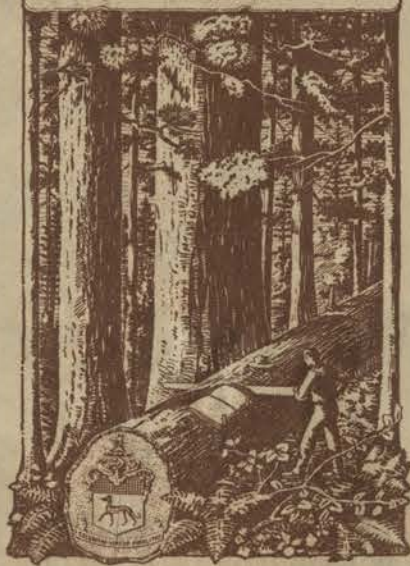
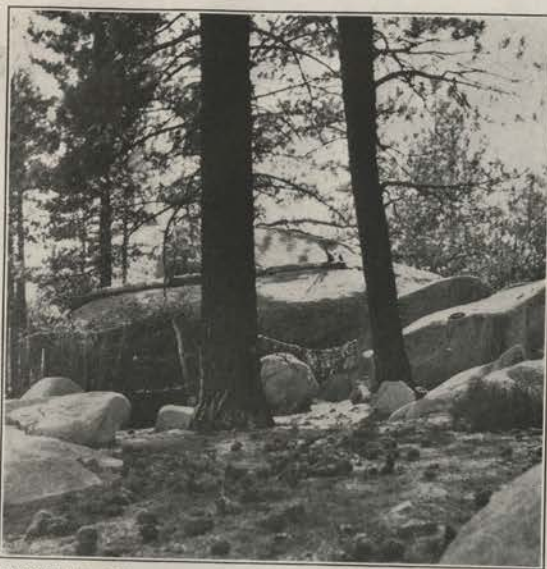


SAN PEDRO MARTIR

EX LIBRIS
FORD ASHMAN CARPENTER



ORIGINAL
NOTE BOOK
1903



COPYRIGHT 1903, FORD A. CARPENTER

A FEW NATIVES OF MEXICO STILL LIVE IN THESE
ROCK-DWELLINGS TO PROTECT THEM FROM
STORMS AND ENEMIES

5. Rock-Dwellers in the Land where California Began

*The Story of a 600-Mile Saddle Trip
Into Lower California, Mexico.*

LONG before the Golden State was annexed to the Union, the Mexicans divided this region and the peninsula into "Alta" or upper, and "Baja" or lower California. Lower California being settled first, is considered by Mexicans to be the "Mother of California." It was through this picturesquely wild region which is practically unchanged since Cortez sailed along its shores 400 years ago, that Dr. Carpenter rode for 600 miles on horseback. His party ascended the crest of the San Pedro Martyr mountains which is more than 10,000 feet high and visited camps of the warlike tribes of the Seri Indians who had paddled across from their almost inaccessible haunts on mysterious Tiburon island.

"Dr. Carpenter, 32°, gave an illustrated lecture on Lower California telling of a cruise of almost the entire length of this little known state of our sister republic in a search for Sequoia (Big Trees). Dr. Carpenter's pictures were excellent and his talk of surpassing interest."—LOS ANGELES CON-SISTORY BULLETIN.

"An illustrated lecture showing the results of a unique exploration tour was given last night before a large audience in the college auditorium. Scientific interest, adventure, novelty, inspiration, were presented in the trip of Dr. Carpenter into Lower California. One hundred beautifully colored slides helped reveal regions which never before heard the click of the camera. The expedition was sent out primarily to verify rumors of existing species of the Sequoia Giant trees growing in the mountains of the peninsula. No Big Trees were found but many beautiful plants were located and collected. Most of the forests are open and free from underbrush. As one climbs the canyons vividly colored masses of vegetation and water are abundant. The mountain sheep, deer and mountain lions were not hunted. Occasionally they followed the cavalcade until someone in the party got tired of the dust they kicked up and took a shot at them."—THE OCCIDENTAL.

FORD ASHMAN CARPENTER
UNITED STATES WEATHER BUREAU
SAN DIEGO, CALIFORNIA

NOTE

The San Pedro Martir range of mountains is located a little north of the central portion of the peninsula of Lower California, Mexico. The range extends from about $30^{\circ} 31' N$ to $31^{\circ} 9' N$, averages about 20 miles in width and has a mean elevation of 8,000 feet above sealevel.

The botanical classification is that of Dr George Robertson of Mentone, Cal., who was a member of the party. All the negatives and prints are by the author.

Ac

Sierra de San Pedro Martir

August 3^d to September 9th, 1903



Mr. Nordhoff's Parting Orders

Off for the San Pedros



Fisher in 1902, when John K. Beach, '77, and Samuel H. Fisher, '89, were admitted to membership in it. In 1913 the firm united with that of White & Daggett [Henry C. White, '81, and Leonard M. Daggett, '84], the name becoming Bristol & White. The other members of the firm who are Yale graduates are Thomas Hooker, Jr., '03, Frederick H. Wiggin, '04, David L. Daggett, '10, and J. Dwight Dana, '11. Mr. Bristol was senior counsel for the University for many years, and in this connection had rendered valuable service, which the Yale Corporation recognized in resolutions passed at its meeting on May 13, 1922. He was a director and a member of the executive committee of the Union & New Haven Trust Company and a director of the New Haven Bank.

He died at his home in New Haven, April 29, 1922, from pneumonia. Burial was in the Grove Street Cemetery.

Mr. Bristol was unmarried. Surviving him are a sister, a niece, and two nephews, J. Dwight Dana, '11, and William B. Dana, '18, sons of Professor Edward S. Dana, '70. He was a brother of the late Eugene S. Bristol, '68 S., and a nephew of Albert G. Bristol (B.A. 1827), John Murdoch (B.A. 1834), and Louis Bristol (B.A. 1835).

William Jehiel Forbes, B.A. 1877

Born July 19, 1856, in Jersey City, N. J.
Died June 29, 1921, in Chatham, N. J.

William Jehiel Forbes, the elder of the two sons of Robert Wasson Forbes (B.A. 1842, M.D. 1845) and Hannah Maria (Edwards) Forbes, was born in Jersey City, N. J., July 19, 1856. His father took a medical course at the University of Paris after leaving Yale, subsequently practiced in New Haven and New York for a few years, and then became engaged in the wholesale lumber and shipping business in New York, at first with his brother, William J. Forbes, and later with his son. They were the first to establish a regular export trade with Australia, sending merchandise in their own vessels to New South Wales and Victoria. Dr. Forbes served as a commissioner for New South Wales at the Centennial Exposition in Philadelphia in 1876, and in 1878 was a commissioner

although he was more especially engaged in matters relating to street railways, gas, and electric companies. From 1889 to 1895 he served as judge of the Derby Town and City Court.



Farewell to the Ranch

at the Paris Exposition. He was the son of William Jehiel and Charlotte Antoinette (Root) Forbes, whose grandfather, Jeremiah Curtis, graduated at Yale in 1724. The American progenitor of the Forbes family was James Forbes, who came from Scotland to Hartford, Conn., in 1672. Hannah Edwards Forbes was the daughter of Timothy and Sarah (Haigh) Edwards, and a great-granddaughter of Jonathan Edwards (B.A. 1720). *of Aaron Burr*

William J. Forbes was prepared for college in Brooklyn, N. Y.,—at the Brooklyn Polytechnic Institute and at Professor J. C. Overheiser's School. His appointments were a Junior first dispute and a Senior dissertation. The summer of 1875 he spent in Europe.

Although he studied law at Columbia, receiving the degree of LL.B. in 1879, and was admitted to the bar, he had never practiced his profession. For a number of years he was connected with the New York Produce Exchange as the managing partner in the firm of R. W. Forbes & Son, and in this connection spent almost two years in New Zealand, Australia, and South Africa. He withdrew from the export business in 1907, and spent some months with a Harvard professor in exploration work in Mexico and lower California, visiting regions comparatively unknown to travelers, and also visited British Columbia. In 1910 he became purchasing agent for the Hospital Bureau of Standards and Supplies, organized at that time for the standardization and central purchasing of supplies for hospitals. During his lifetime this bureau developed until it served Yale in China, and Dr. Grenfell's expeditions in Labrador, as well as fifteen New York hospitals, and many others, chiefly in the eastern part of the United States. Mr. Forbes was a member of the Down Town and Century associations.

His death occurred in Chatham, N. J., June 29, 1921. Burial was in Oaklawn Cemetery, Fairfield, Conn.

He was married in Fairfield, June 25, 1885, to Rebecca Tappan Rowland, who was a student in the Yale School of the Fine Arts during 1880-81, and who died March 10, 1915. Mrs. Forbes was the daughter of Henry and Elizabeth Tappan (Edwards) Rowland; a sister of Henry Edwards Rowland and Samuel Rowland, both members of the Class of 1871, and of

Amory E. Rowland (Ph.B. 1873); and a great-granddaughter of Jonathan Edwards. Their only child, Reba (Mrs. Howard M. Morse), survives. Mr. Forbes was a brother of the late Robert W. Forbes, Jr., ex-'81; a nephew of Benjamin Silliman (B.A. 1837) and the Rev. George P. Fisher, a graduate of Brown University in 1847, who received the honorary degree of M.A. at Yale in 1867; a cousin of Benjamin Silliman, '70, George P. Fisher, '81, and Forbes Hawkes, '87; and an uncle of Henry Rowland, ex-'99.



Farewell to the Ranch

*Read
at Jassad
college
Examination
for Yale
when 18
years old*



The lass that loved a Sailor



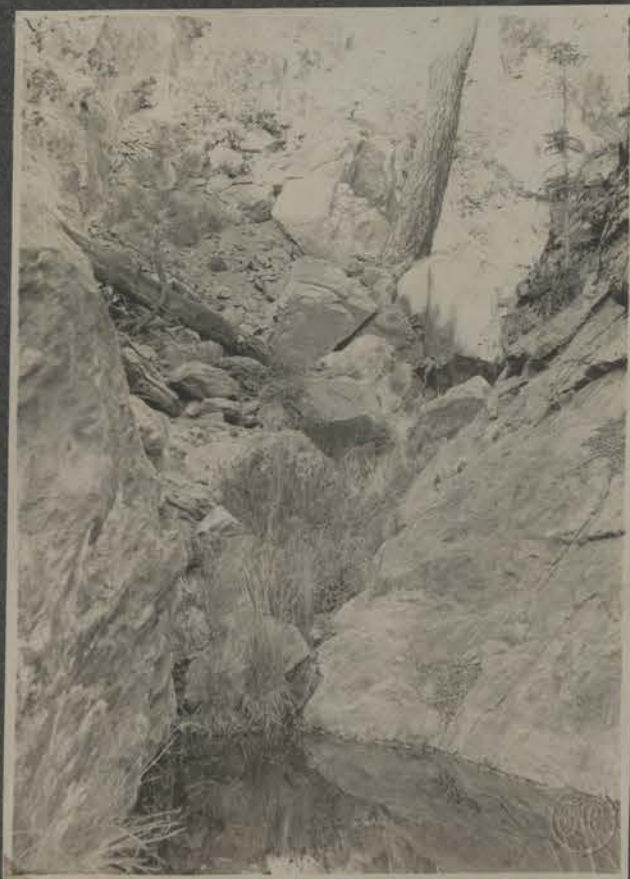


The Oaks

(Quercus Agrifolia)



Breakfast-time



A Rocky Pool



First Camp -

Elev. 860

Santo Domingo



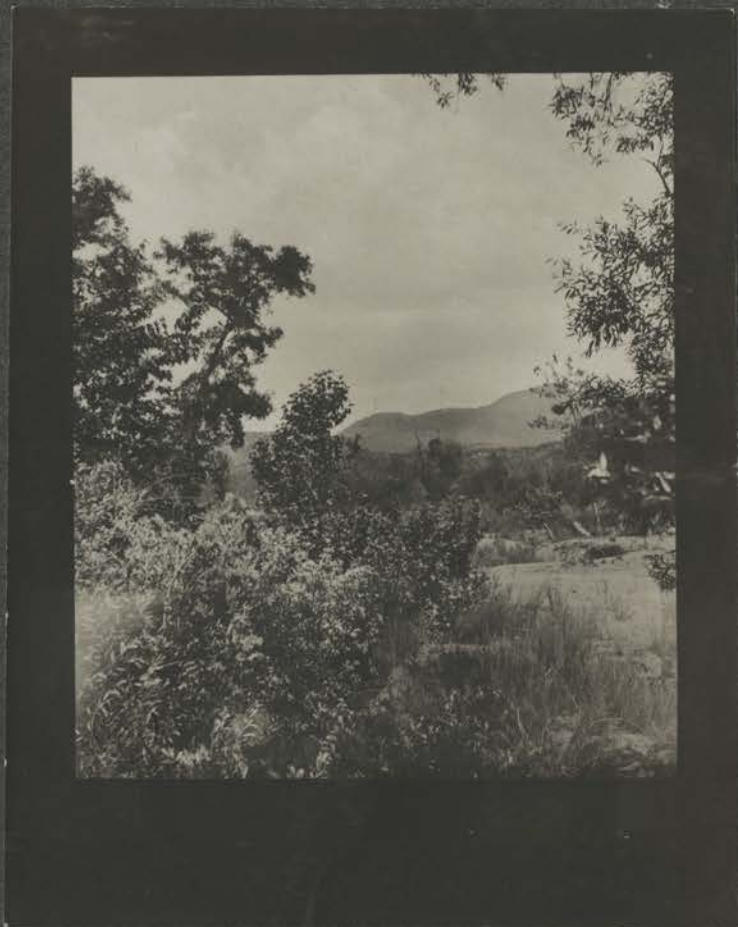
Elev. 2570
Aug. 7.

Santa Clara





Sea Terrace



Santa Clara



*Elev. 3460
Aug. 9*

Trinidad Valley



One of the Doctor's Nappy Moments

Pedro Gosa



Rattlesnake Spring



A Desert Auto

*Queen Victoria Rock
On the Alamo Road*





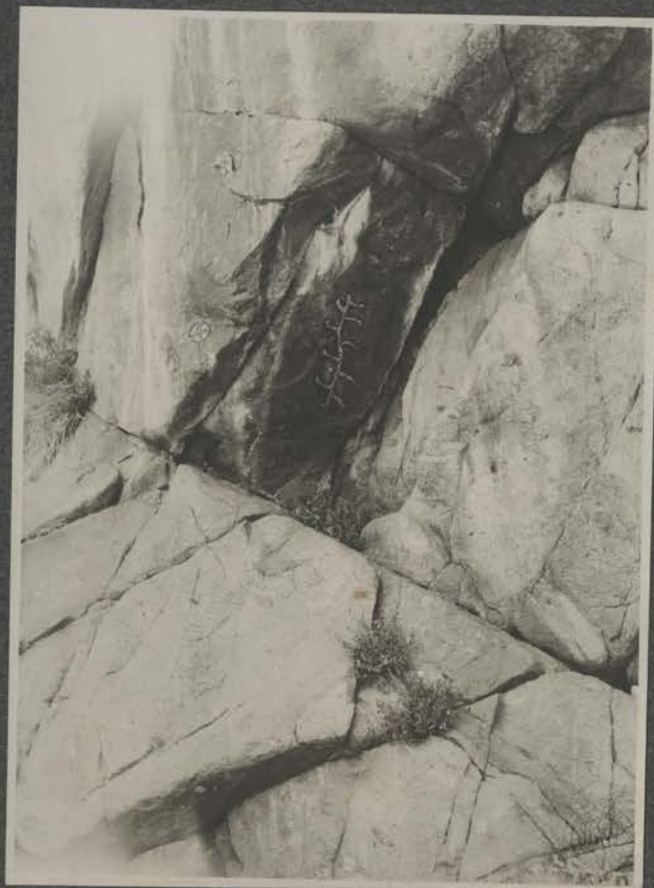
The Faithful Few



Palm Camp



Solio Grass



*Elev. 3190
Aug. 11*

*Indian Paintings
San Martin's Valley*



The San Felipe Trail - Breakfast



Vaselino and Al Bundigo



Charlie



Ah
Koon

The First Deer



When Spades
are Trumps



Elev.
1860

Palo Verde



Iron Veins



Hunter and Hunted



The Cañon Walls



Camp Mesquite



Elev. 1860
Aug. 14. 15.

The San Pedros from the East



Sunrise on the Desert



Another View



Base of Cañon Diablo



The Quest



Forty Inches from tip to tip

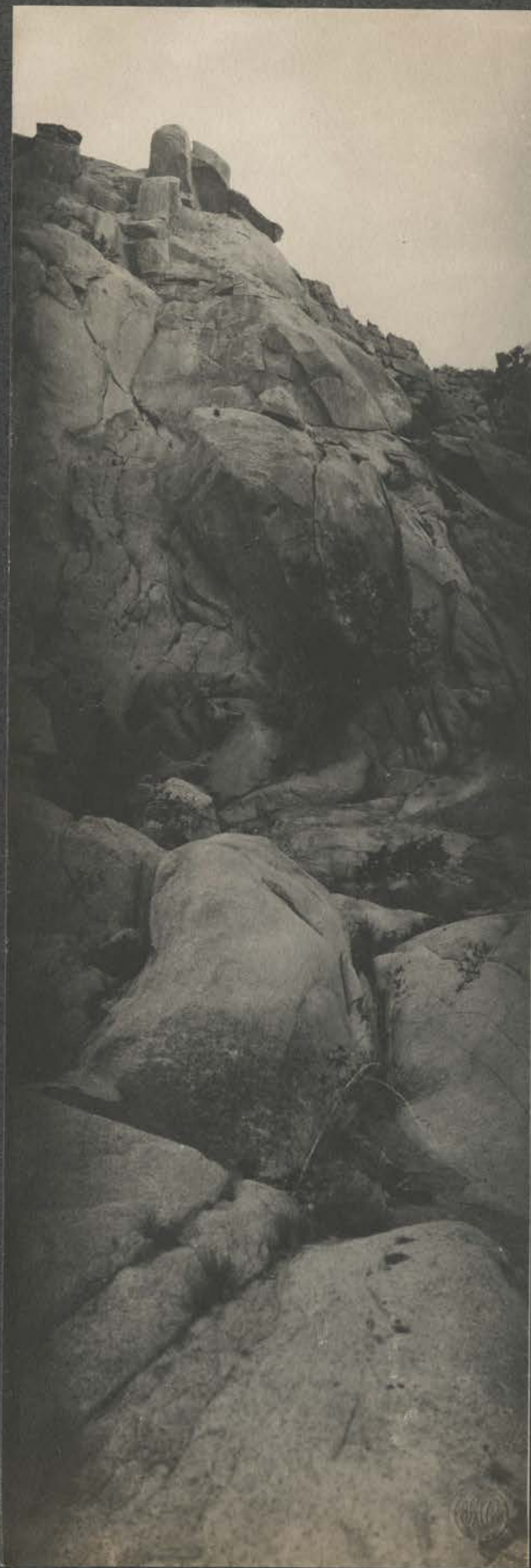


The Bottom of the Cañon



*Aug. 14 - Noon
Elev. 2860*

Air temperature in Shade 128°



*North $\frac{2}{3}$ South
Walls of the
Cañon Diablo
Height 4800 ft.*

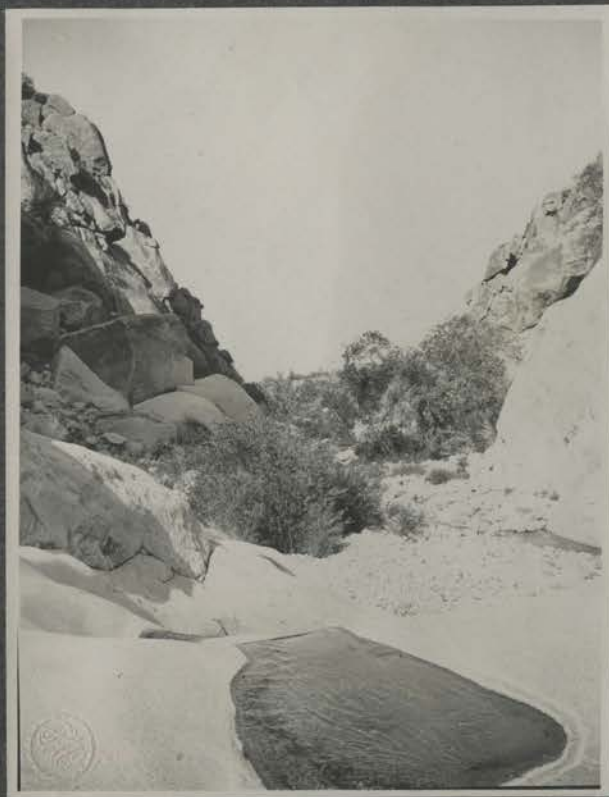




Erosion



Petils of Mountain Sheep Hunting



A Rocky Pool

— The memory makes me thirsty even now!





Wanted: A Trail





The Challenge



*The Chief, Age 110 years.
6ft. 7" in Height
Tattooed in Red;
other members
of tribe in black*



Fibre Huts



Aug. 16.

La Hacienda



Native Family



A Consultation



Matate Cañon





In the Foothills





Arroyo de San Rafael





In the Land of the Blue Flowers



Alkali Ike



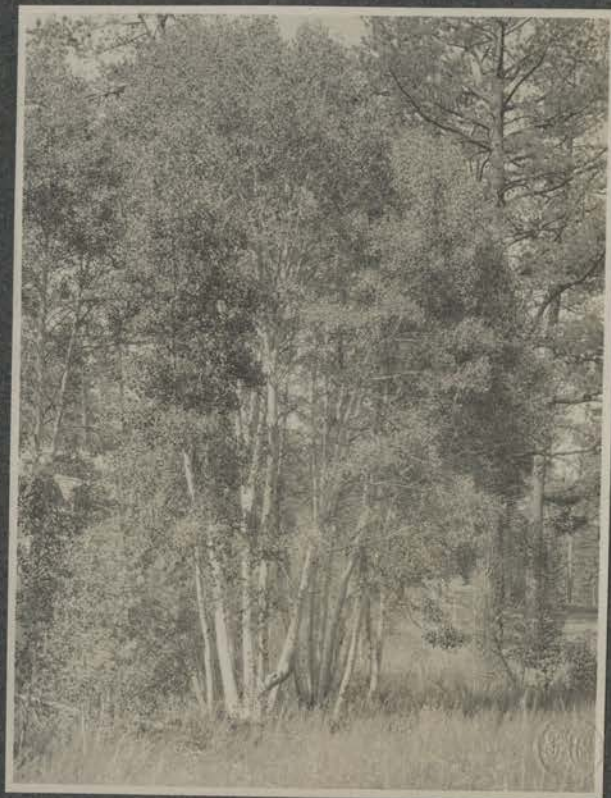
The joys of a bath once more



Said the Doctor: "Now, Mr. Nordhoff, don't you think—?"

Deer Country





(*Populus tremuloides*)

Pancake Manza

Elev. 5260 ft.



Three Hours Shooting

Results



Two Hours —

One Hour





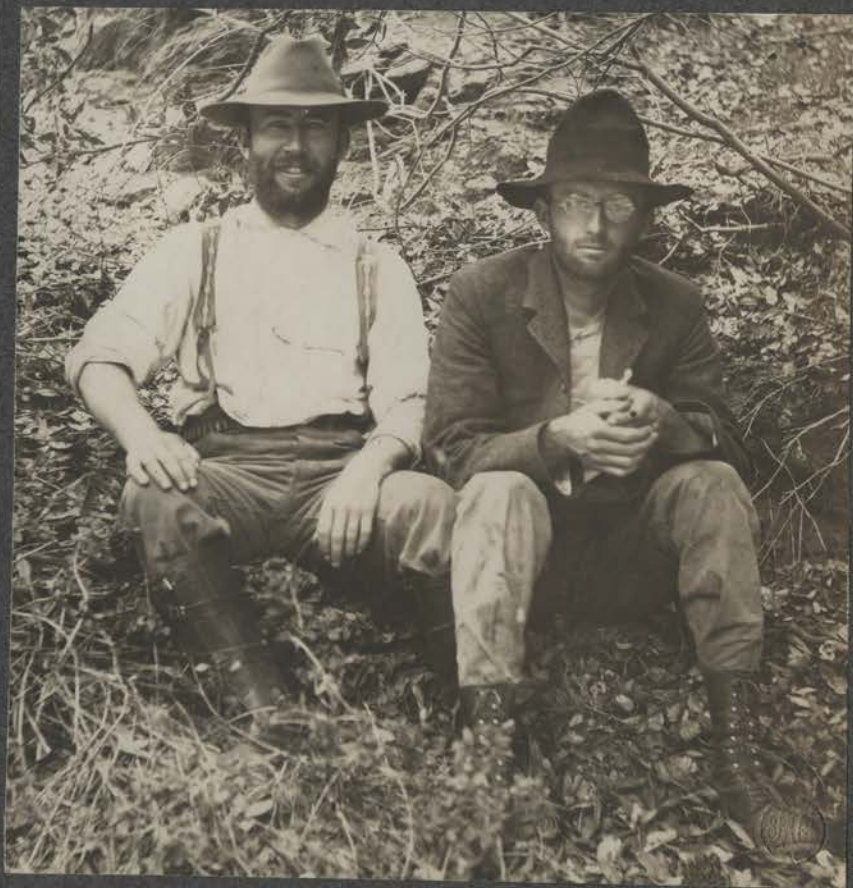
"Alkali Ike" ^{9/14} "Pike"

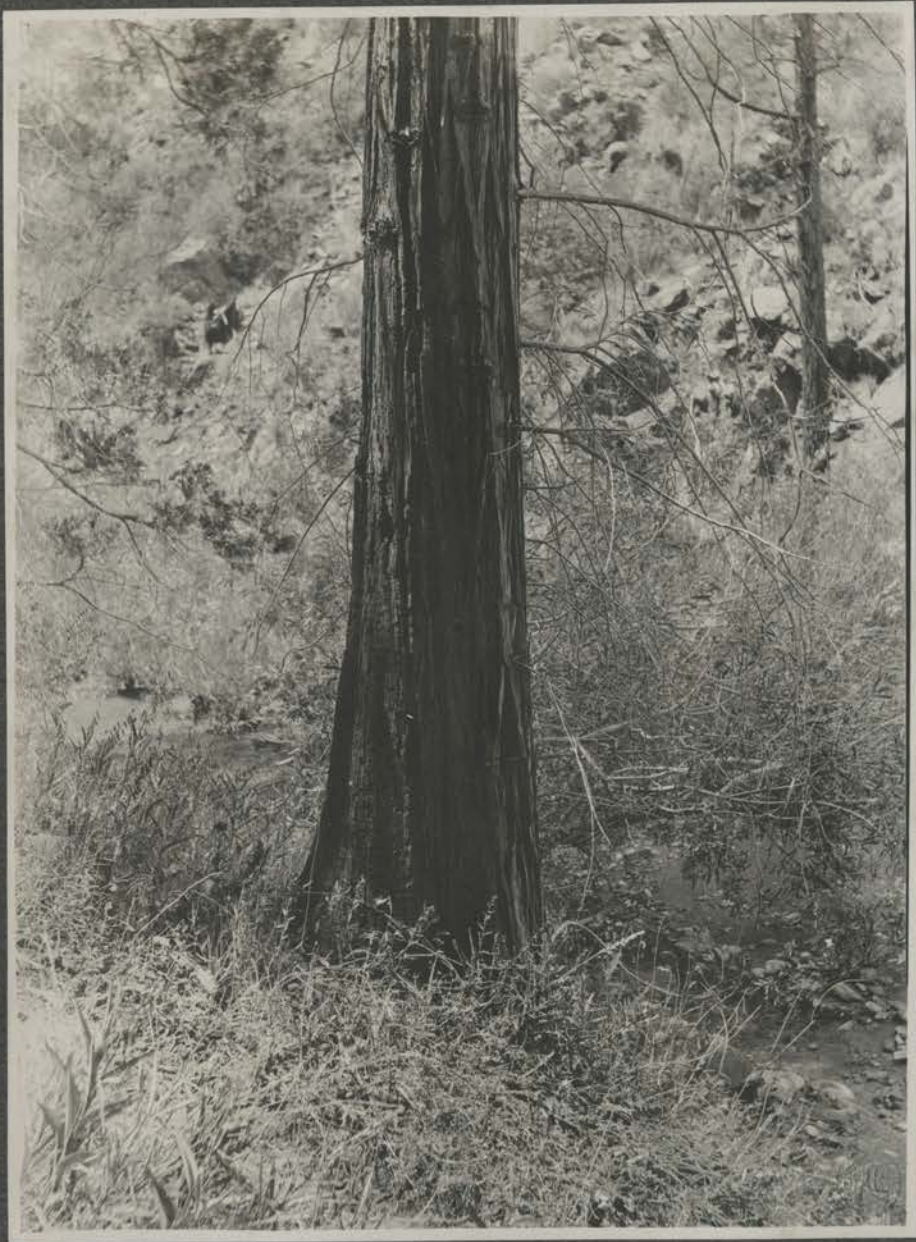
OUR GUIDES

Francisco

Feliz

Melendrez





Cedar



Snow Plant



El Pino



Pinos Colorados



Strawberry Camp



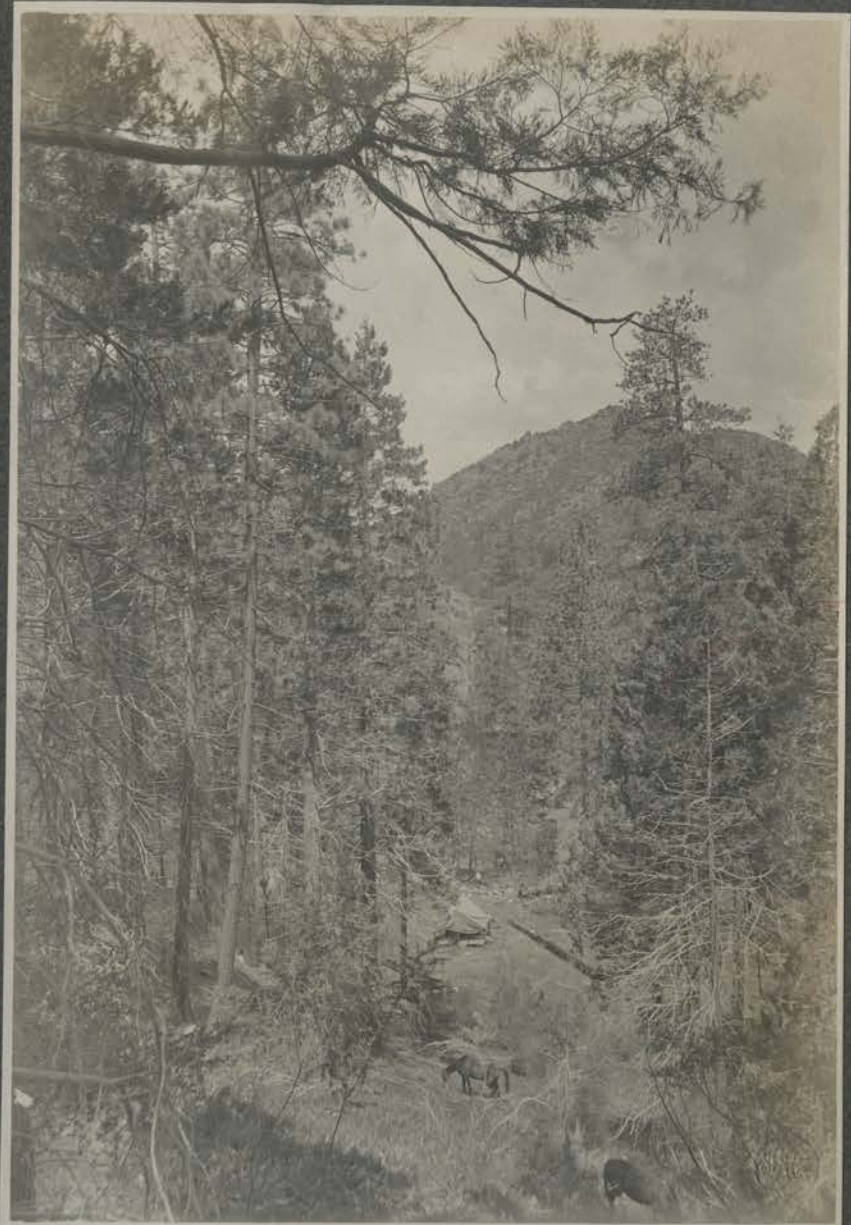
Vallecitas





The Smoke house

*Pastel
Verdido
Camp*



Elev. 6140, Aug 19.

Before making camp.



Result
of a shot
from the
.35/70

Entrance



A
Hand some
Luncheon



Exit

A Necessar
Operation





Elev. 7370, Aug. 21

Camp at Vallecitas



Aspens



The Reproachful Look



*The Ant and the Sluggard
(Find the Sluggard)*





The Finest Camp of All - Vallecitas



*Cold night weighs down the forest bough
Strange shapes go slitting thro' the gloom
But see! a spark, a flame, and now
The wilderness is home*

E. W. S.

Around the Campfire



On the March



The Laundry



*A
Little
Blue Flower*



Francisco

Tomas

Ah Koon

[Al Bundigo]

Dr. Robertson

Mr. Wotkyns

Charlie

Mr. Nordhoff

Feliz

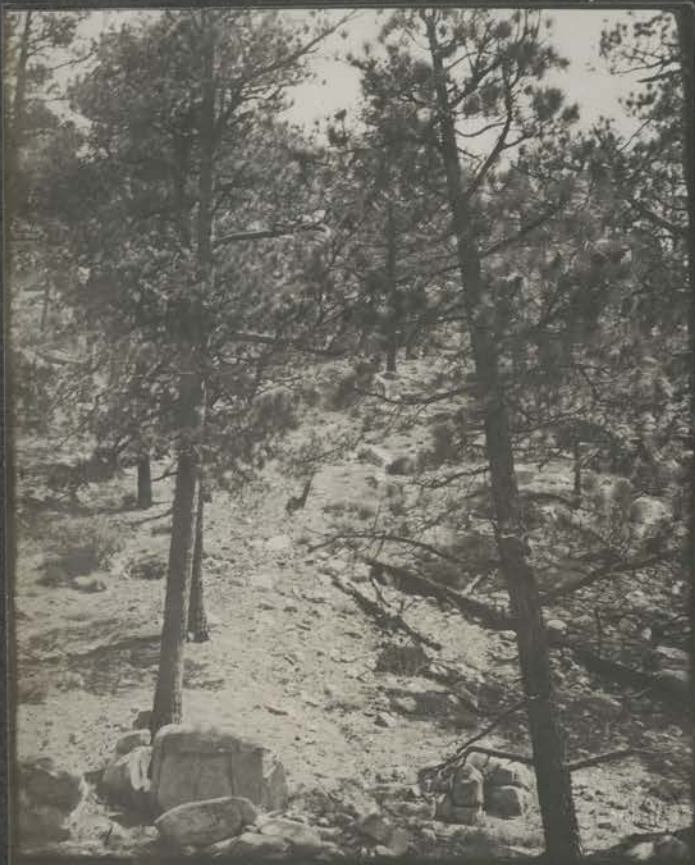


The Corona Forest



The Pines below the Corona



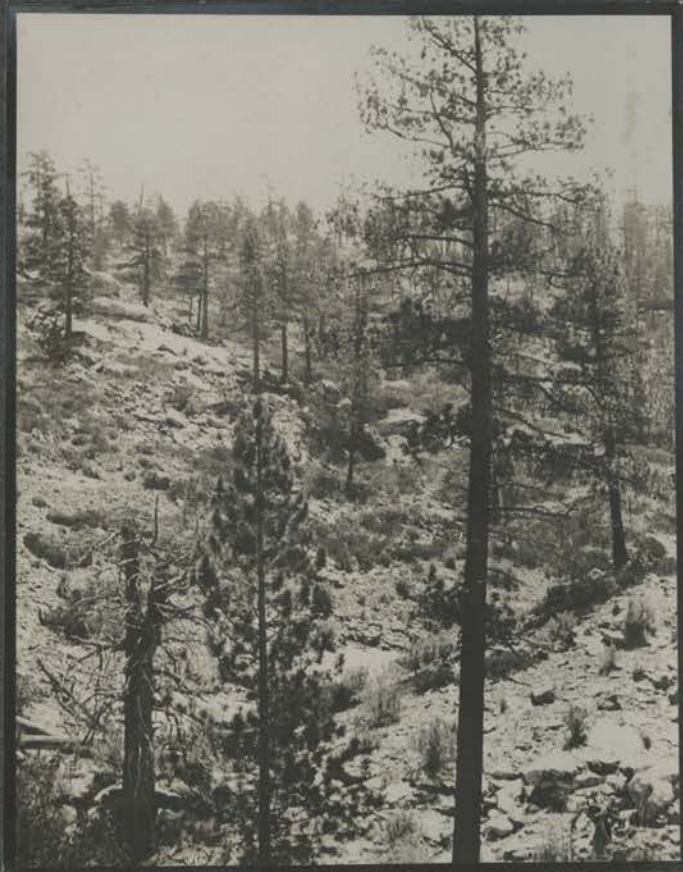


Corona Trail



— A Rival to Yosemite







Panorama
From the
Corona

Elev. 9500
Aug. 17.





The shrub-covered foreground

The Horizon Round from



The cloud-shadowed desert



The dyke-ribbed peak

the Summit of the Corona

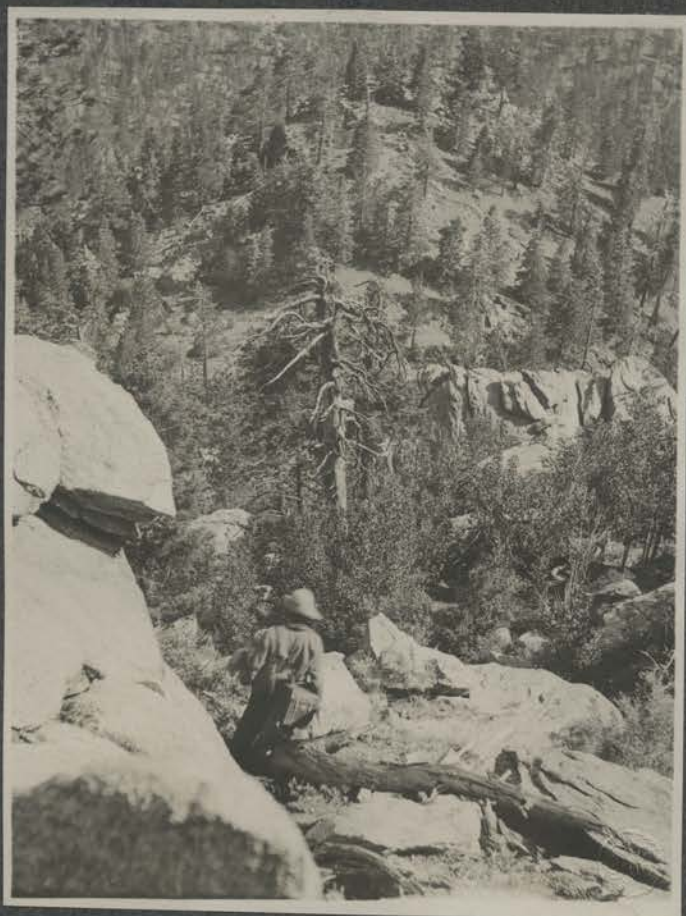


The pine-clad hills



*The precipice
above the
Cañon Diablo*

*The greatest geological
"fault" known.*



Feliz on the Corona Trail

Telephotograph



The Gulf of California



The Summit of the San Pedros

Elev. 12,000 ft.

Aug. 20.



A Quartz Vein



Meadow and Mountain



Toward the Pacific Ocean



The Sea of Tree Tops



La Carnesecca

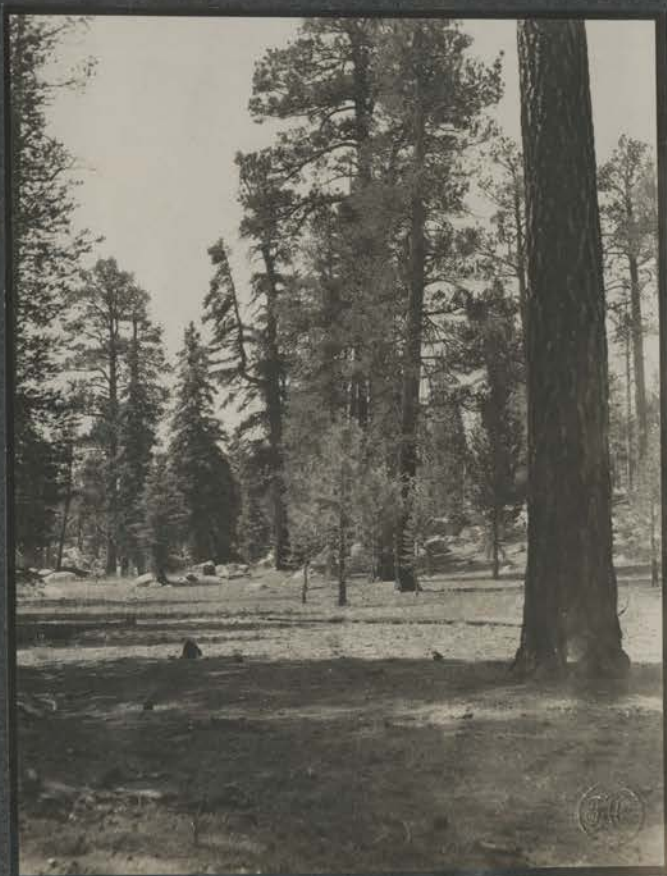


Elev. 7200

My Camp at La Grulla



Glimpses along the Trail





A Forest Glade



The Southern End of the San Pedros



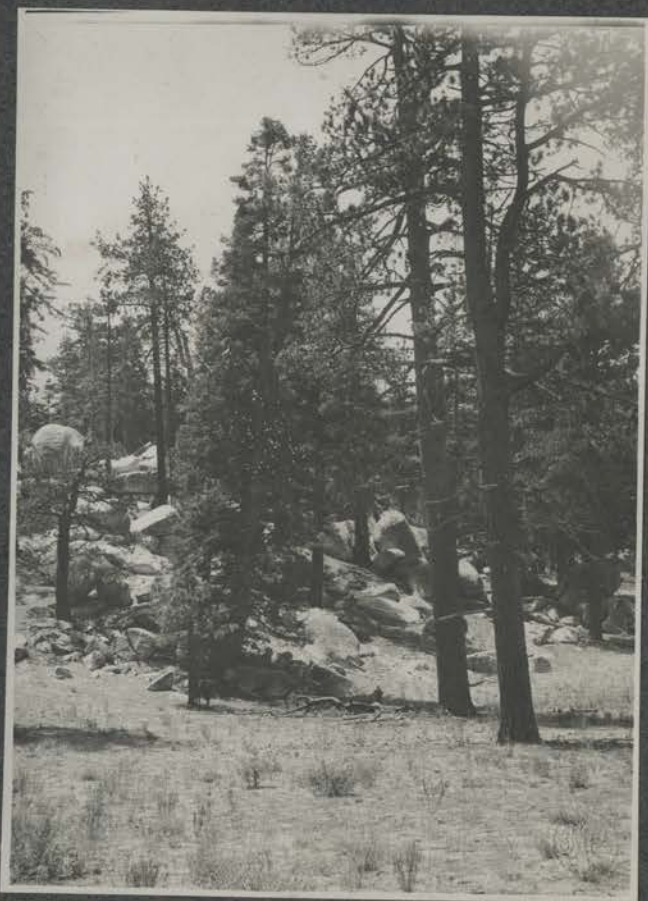
Big Pines



(Pinus jeffreyi)



La Encantada



(Pinus lambertiana and Abies concolor)



A Rough Trail!



Panorama of



Hornblende Granite

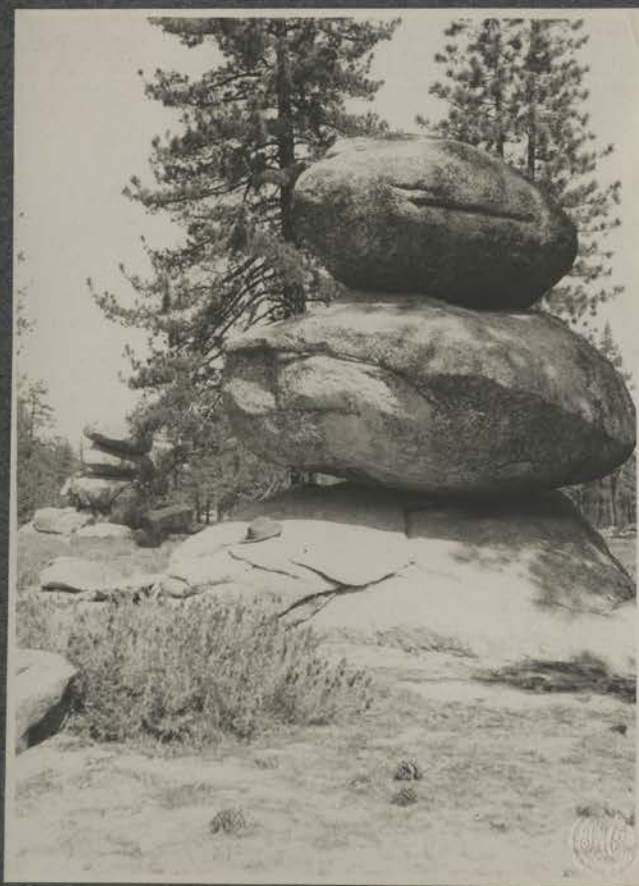




La Grulla



*Two
Thirsty
Souls*

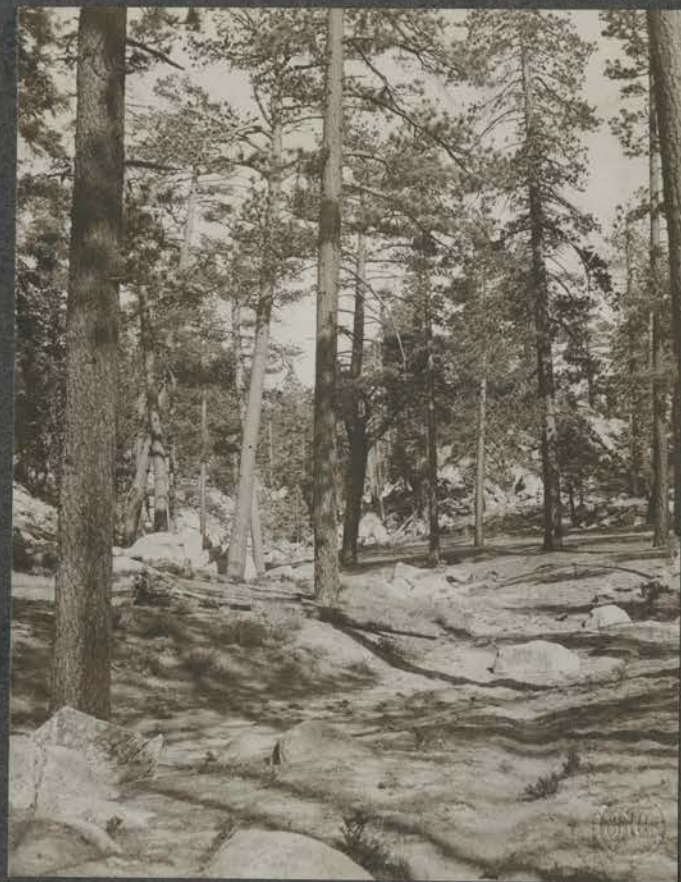
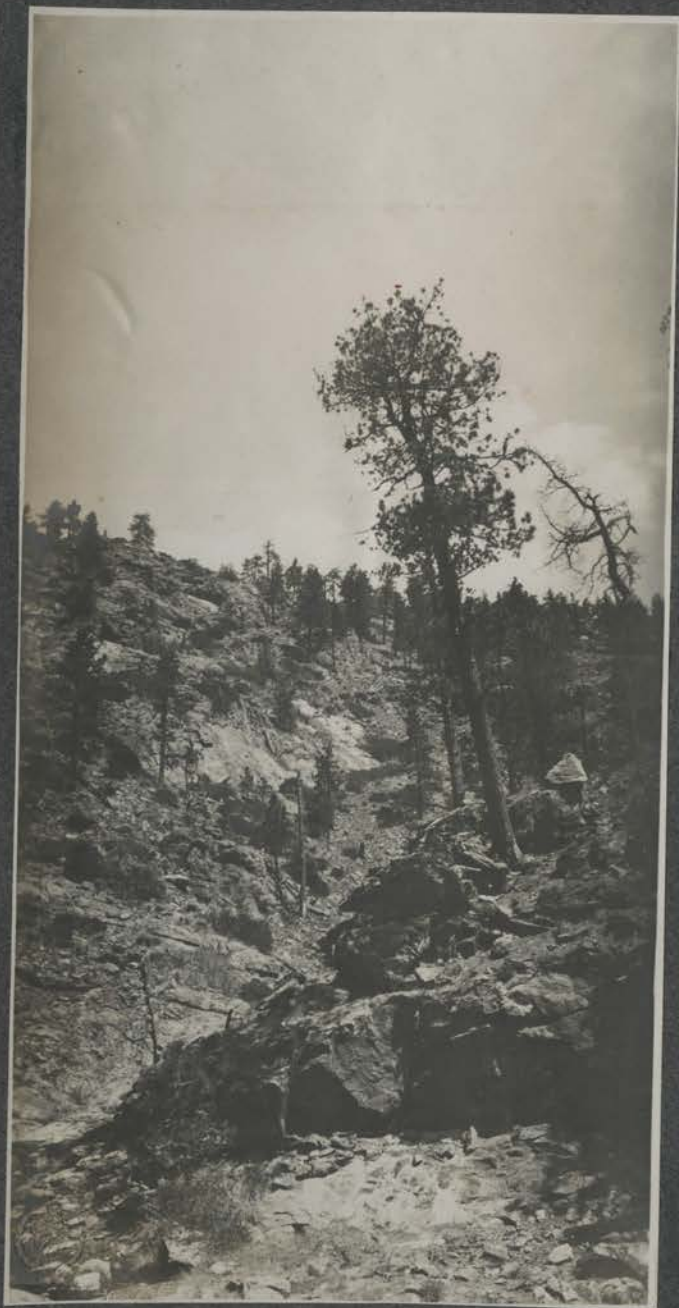


Erosion



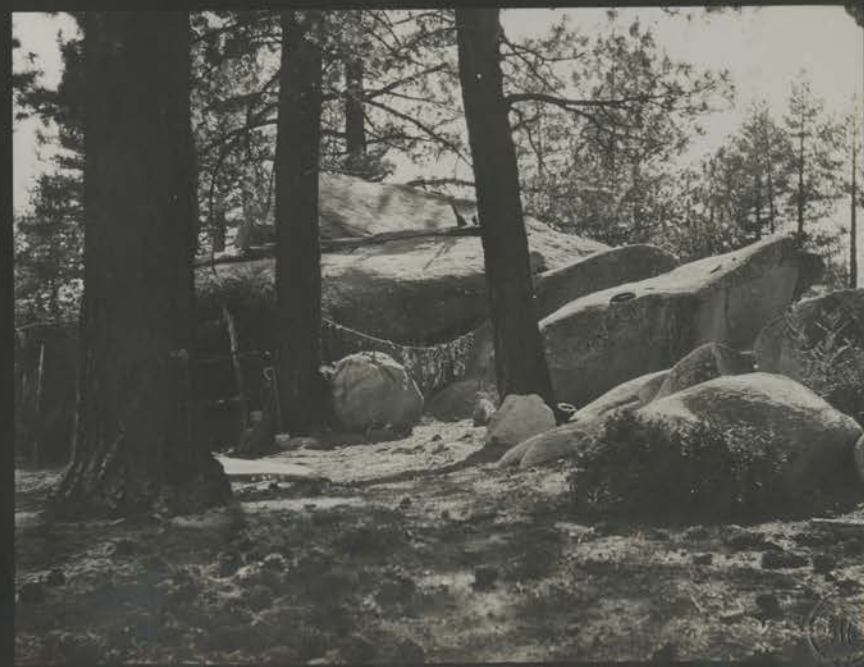
An Extinct Volcano



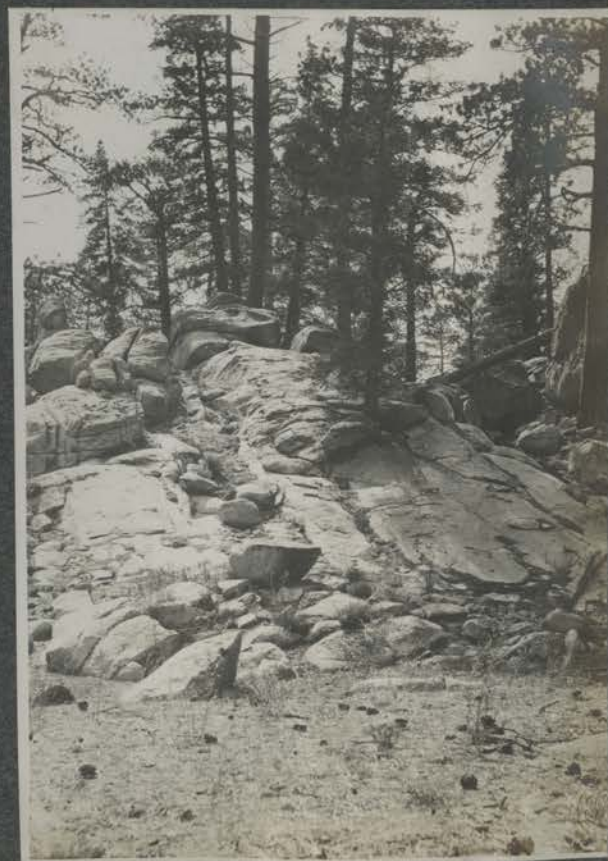
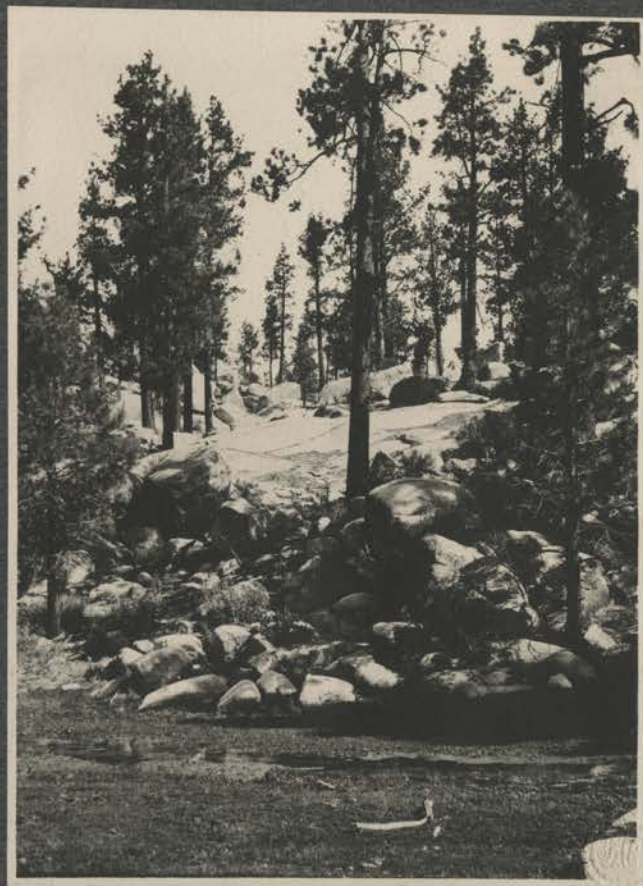


The Trail

*South side of
Boulder Dwelling*



Proofs of Glacial Action South of Latitude 43°





Cross Section of Glacial Bed



Root action on granite



The Trophy



Stubbornness



Ranch



Ranchers



Waiting for Supper



Sunset



Dawn



Twilight



*Through the forest
day after day the same*



Al Bundigo's Quarry





The Red Pine



Breaking Camp



*Just
Before
the
Battle*



Hitting the Trail



Willows, Oaks and Pines



**San Diego,
California**

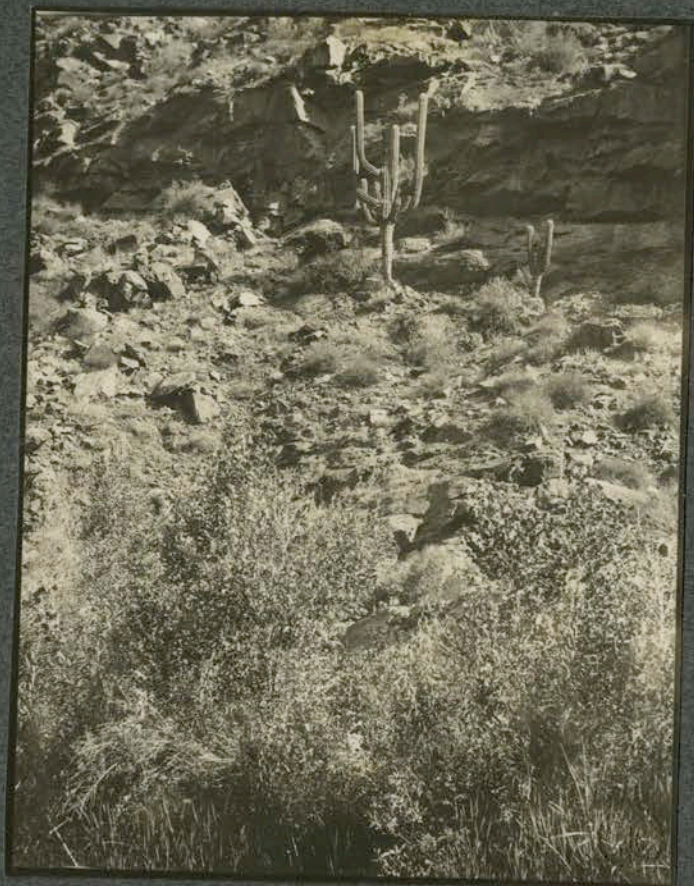




The Trout Stream



A Lesson in Bed Making



*Where extremes meet
Candelabra Cacti and Rushes*



*Rainbow Trout, Originally Planted by the
Mission Fathers Two Hundred Years ago*





— "Si Señor!"

— "Did your friend, the Señor
Retrator secure a
satisfactory photograph?"



The Story of the Lion Skin



Where we caught the Sixty Trout





Greeting



In Camp at Don Blas'



Old Friends-

*Al Bundigo and
Frontino*



Our last Glimpse of Feliz



Arroyo de Aguajito



Don Blas' from the Hills



Señor Santa Maria don Blas Manriquez



"I shall be honored to have you photograph me, Señor, - but only with my family." Said Don Blas



Don Blas'



*Five minutes exposure
at 8³⁰ p.m. Sept. 3^d.*

Evening Primroses



Never again, San Pedro Martin!



Ruins of the Mission of San Vincente





Elev: 1160 ft.

Valle de Santo Tomas





Obsidian and Lava outcropping



Homeward Bound



Al Bundigo's pretty trick



Two dozen Quail



A Black-diamond



Palms at Santa Tomas



Ruins of the Mission de Santo Tomas



A last drink from the old canteen

After half a thousand miles





The Castro Family





Sunset over Ensenada

Ensenada Golf Club





Bahia de Todos Santos



Messers Culver



The Harbide Porch



Sunrise over the Foothills



From the Hurbide Porch



San Diego from the deck of the S.S. St Denis

LOWER CALIFORNIA ROAD

Mexican Highway



GOVERNOR GENERAL ABELARDO L. RODRIGUEZ of the NORTHERN DISTRICT OF LOWER CALIFORNIA.



A BEAUTIFUL BIT OF DESERT SCENERY NEAR LEON GRADE

R & MILLER
d. (Hollywood)
bury Drive
y Hills)

WASHINGTON MOTOR CO.
3205 West Washington

WATERS NASH
1230 S. Flower St.

Sales Company

California, Arizona and Southern Nevada
Sales: Figueroa at Eleventh
es: Flower at Eleventh
Store 1021

California for the half year ju
Nash history in this territo

cars you've ever

The Easiest St

cars ever offered in

The Most Lux

cars Nash ever

The Finest, F

GREAT MEXICAN ROAD OPENED

(Continued from First Page)

last week the road was entirely opened to La Paz.

In using the highway the motorist will follow the present highway south from Tia Juana through Ensenada to San Quintin Bay, the road striking the coast here and following the ocean to San Blas Bay. At this point the road swings eastward and crosses the mountain range that extends the length of the peninsula. Passing through Rosario and San Ignacio the road reaches the east coast at Santa Rosalia, headquarters of the Boleo Copper Company, the largest copper mine in the world. From this point the road turns inland again, crossing and recrossing the mountain range and eventually reaching La Paz. La Paz is an excellent natural harbor, the best on the peninsula and the center of a prosperous pearl fishing industry.

Today Gov. Abelardo Rodriguez with his engineer and Mr. David Zerate, president of the Chamber of Commerce in Ensenada, accompanied by D. C. Rhodes, field engineer of the Automobile Club of Southern California; Fred B. Ross, manager of the emergency road service, and Morris M. Rathbun of the news department of the club are somewhere beyond San Ignacio on the first official tour of the road. The club officials are guests of the Governor.

SIGNPOST ROADS

The Auto Club has already signposted in English the roads in use in the northern district of the Territory and following the inspection tour, expect to signpost and map the new road.

In building the road the Mexican government has followed the trail that was blazed by the Spanish padres over two centuries ago. The cradle of the mission chain that first brought civilization to California is in Lower California. The Jesuits landed in the southern territory in 1697 and promptly established missions along an earlier El Camino Real, or King's Highway, a route followed by the present new road. Picturesque San Ignacio, the first of these missions, was built over 200 years ago.

Franciscan followed Jesuit in the jurisdiction of Lower California and in turn were succeeded by the Dominicans, Padre Junipero Serra leading his faithful Franciscan fathers into California where the first of the California missions was established at San Diego.

Baja California is an older land than California in point of discovery. It is recorded that it was first visited by the Spaniard, Fernando Cortez, some 400 years ago. Brown-robed men in sandaled feet followed, building missions.

Commercially the road will be an aid to those interests in Mexico which are raising fruits, cereals and vegetables in abundance—wanting only an effective means of transportation to bring them prosperity. Mineral, oil and the sea industries only wait development. Fish and other of the canning industries already are prospering.

N

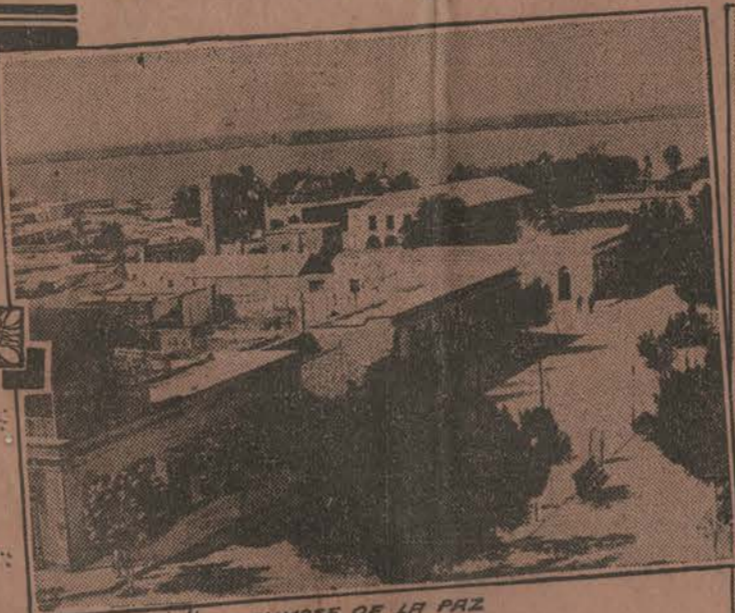
Stock No. 1198-D
WASHINGTON, D. C.
To (office)
WAYBILL PREPAID
By Shipper

LOWER CALIFORNIA ROAD EIGHT HUNDRED MILES LONG DEDICATED

Mexican Highway Pierces Country Ranging From Desert to Rich Agricultural Land



GOVERNOR GENERAL ABELARDO L. RODRIGUEZ of the NORTHERN DISTRICT OF LOWER CALIFORNIA.



A GLIMPSE OF LA PAZ.



A STRETCH OF THE ROAD NEAR AGUA DULCE.



SR. CARLOS M. EZQUERRO GOVERNOR OF SOUTHERN DISTRICT OF LOWER CALIFORNIA.



A BEAUTIFUL BIT OF DESERT SCENERY NEAR LEON GRADE.



POINT SAN LUCAS, THE MOST SOUTHERLY TIP OF LOWER CALIFORNIA.



GOVERNORS CO-OPERATE IN CONSTRUCTING HIGHWAY

Rich Country Opened by Work of Mexican Government; Auto Club Officials on Tour

BY AL PARMENTER

The Pacific Highway extending from Vancouver in Canada for 1648 miles southward along the entire Pacific Coast in the United States took on a third nationality and increased in length approximately 800 miles when the two Mexican governors of Lower California last week officially opened and dedicated a new highway extending from Tia Juana southward the length of Lower California to Cape San Lucas at the extreme tip of the peninsula. The road also extends inland from Tia Juana crossing the border at Mexicali.

This is the first automobile road built the length of the peninsula and joins for the first time the northern and southern districts.

JOINT PROJECT

Gov. Abelardo Rodriguez of the northern district and Carlos M. Ezquerro, Governor of the southern district, are jointly responsible for the operation of the road. These two progressive governors co-operated in building the highway. Gov.

The idea of the two governors in doing the teamwork road-building is to make it possible for tourists, settlers and the newly developed business interests to have a quick means of effective transportation the whole length of the peninsula. Such a road will undoubtedly bring tremendous opportunities in many respects to this very rich and so far undeveloped region.

STARTED IN 1925

Drawing by Charles H. Owens

PREPAID
 WAYBILL
 Stock No. 1148-D
 WASHINGTON, D. C.
 To (office)
 Consignee
 Value
 Article and Description
 Weight
 Scale
 Class
 Add Unexchange
 Express Prepaid
 Prepaid Beyond
 To Whom Paid
 Add Unexchange
 Class

For Dr. Ford Ashman Carpenter
 U.S. Weather Bureau
 Los Angeles

INTERNATIONAL



A
 Mexican Tea
 ROSE COTTAGE

Thursday
 Sept. 24
 1903



MENU

- Tortillas
- Frijoles, Carnesecca, Queso
- Verba Buena
- Pinoche

VALUE - DOLLA.
 C O D
 Dollars
 Cents
 War Tax
 To Whom Employe



Handwritten blue ink scribbles and markings on the cardboard, including the letters 'C', 'D', and 'O'.

WAYBILL PAID BY SHIPPER
 Stock No. 1186-D
 WASHINGTON, D. C.
 To (office)
 Consignee
 Value
 Article and Description
 Weight
 Scale
 Date
 C.O.D.
 Express Charges
 PREPAID
 99
 36



California.
 FROM
 GEOGRAPHIC SOCIETY
 NINTH AND M STREETS
 Washington, D. C.

Please notify if not delivered in ten days.

A
 Mexican Tea

ROSE COTTAGE

Thursday
 Sept. 24
 1903



MENU

- Tortillas
- Frijoles, Carnesecca, Queso
- Herba Buena
- Pinoche

OFFICE LABEL	
VALUE - DOLLARS	
C O D	
Dollars	Cents
War Tax	To Whom Employe

Handwritten blue ink markings on the cardboard, including large stylized characters and symbols, possibly '308' and '100'.

LOWER CALIFORNIA ROAD BUILT

RICH MAN'S WILL
LIMITS FUNERAL
EXPENSE TO \$100

SANTA BARBARA, March (P)—The holographic will of Walter Nordhoff, father of Charles Barnard Nordhoff, co-author of "Mutiny on the Bounty," specifies that only \$100 be spent from his estate on his funeral.

The will, filed for probate today, left many large estates in the United States, Canada and Mexico entirely to the widow, Mrs. Sarah Nordhoff of Santa Barbara.

Nordhoff said he wished the small funeral expense "as an example to the poor who are so often robbed by undertakers."

Nordhoff died February 25. His father, Charles Nordhoff, California pioneer and author, founded the town of Nordhoff, now called Ojai.

1817 Anacapa St.
Santa Barbara Calif-8/30/

My Dear Dr. Carpenter

I am indebted to you for copy of prospectus of your Winter lectures, and wish that I might go along, to attend and applaud at proper intervals. Or perhaps rise up and propose that vote of thanks, which men of your type deserve, but often do not get. Should it thus happen, write to me and I will send a letter signed "Populus" or "Indignant", asking why American audiences are so dull, and ungrateful, to the nearest newspaper.

I trust your trip may be as successful as these past, and that Mrs. Carpenter and yourself may return refreshed by new sights and new people. Personally I fear I want neither, since as I approach 70- I am all for quiet, and permanence. I rather think that after I am in the ground I shall be content to stay there, so when we meet in the Hereafter, don't expect me to welcome exploring trips into the 5th. & 6th-dimensions, in which you will undoubtedly pass your scenes of time. Though I shall always be glad to have your thought-graphs on the subjects, when you rest between flights. It is one of the penalties of super-activities in this life, that in the future you are either in Hell, because forced to idleness, or spend your time of Rest in greater liveliness there. However, I hope that you may there also be the Super-man, and therefore be content with whatever comes to you.

Thanks again for your prospectus, and when travelling remember me as one who hopes there is no travel in the future.

My regards please to Mrs. Carpenter, who lingers in my memory as still 16, with a delightful touch in cooking and in house decoration, and best wishes for you.

Sincerely yours

Dr. Fers A. Carpenter

Walter Nordhoff
Walter Nordhoff

National Geographic Society

WASHINGTON, D. C.

JOHN E. PILLSBURY, PRESIDENT
HENRY WHITE, VICE-PRESIDENT
JOHN JOY EDSON, TREASURER

GILBERT H. GROSVENOR, DIRECTOR AND EDITOR

JOHN OLIVER LA GORCE, ASSOCIATE EDITOR
O. P. AUSTIN, SECRETARY
GEORGE W. HUTCHISON, ASSOCIATE SECRETARY

L-FP

September 23, 1919

Dr. Ford Ashman Carpenter,
120 South Manhattan Place,
Los Angeles, Cal.

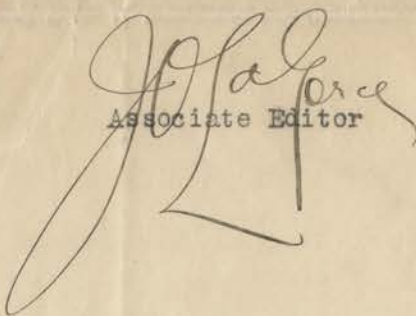
Dear Dr. Carpenter:

In response to your recent letter, I am enclosing our Treasurer's check for \$100.00, the honorarium for your article, "The San Pedro Martir Mountains in Lower California," and illustrations. We greatly appreciate your sending the additional photographs, and have had much pleasure in looking through the album. In it there are nine others which would be of interest to the article, and if the negatives are available I shall appreciate your having prints made and sending them on. These subjects are checked with a red pencil.

May I offer my congratulations and best wishes for your success in the very interesting new work which you are about to undertake, and I should certainly enjoy seeing the aerial photographs you mention.

Appreciating your cooperation, and with personal good wishes, I am

Yours very sincerely,


Associate Editor

Check enclosed

live in Summit N.J. ⁴ say 3 or 4 miles from here.

W. J. FORBES
OLD SHORT HILLS ROAD
NEAR PARSONAGE AVE.
MILLBURN, N. J.
TELEPHONE 33 SHORT HILLS

If at some time in the den future it should seem wise for me to come out west Los Angeles based, what rent would approximately cover such quarters as outlined within butlers & grocers deliveries but not in the centre of Pasadena & what perhaps could be done in the way of a cook & servant for how much money. Don't go hunting up data for this vague inquiry but talk it over with your wife & write me the results of your joint "thinks" some day when you get round to it. Do not cut it too close would want a safe estimate on my very much restricted income. Of course am no pauper but like yourself have to count pennies now. What a bubble of self altho is - Egotism or old Age? -

Pray forgive it but believe in my affection for you & pleasure in your letters with my especial regards for your wife, & wishes for all that contributes to the pleasure & success in life of either or both of you.

Very sincerely W. J. Forbes

Los Angeles Chamber of Commerce

INTERDEPARTMENT

DATE 9-5-29

TO: Dr. Carpenter
FROM: Mr. Arnoll
SUBJECT: Lower California Climate

I am very glad to get your note of September 2, together with copy of your report on Lower California. I agree with you that we should cooperate with the Chicago Tribune in every way possible, with regard to their investigating this particular country.

I sometimes wish that we could get before our American people the lure of that region, particularly the Gulf of California, because as you state, the conditions there today are exactly the same as they were when Cortez conquered Mexico.

If we could get some responsible parties up here and in Mexico to organize tours by boat down into that region for hunting and fishing, I believe we could work up a real interest. People go to far away Africa to see primitive conditions that can be just as easily found within a few hundred miles of this city.

