

*Report and Index of
Underway Marine Geophysical Data*

Zheng He Expedition

Leg 03

(ZHNG03RR)

R/V Roger Revelle

(Issued May 2005)

Ports:

Wellington, NZ (26-Feb-05)

to

Auckland , NZ (24-Mar-05)

Chief Scientist: Elizabeth Sikes

Rutgers University

sikes@marine.rutgers.edu

Computer Tech - Woody Sutherland

Resident Tech - Bob Wilson

Post-Cruise processing and report preparation by the

Shipboard Technical Support Group,

Scripps Institution of Oceanography

La Jolla, CA 92093-0223

Note: *This is an index of underway geophysical data edited and processed after the completion of the leg and is intended primarily for informal use within the institution. This document is not to be reproduced or distributed outside Scripps without prior approval of the chief scientist or Shipboard Technical Support, Scripps Institution of Oceanography, La Jolla, California 92093-0223*

STS Cruise ID#305

Report and Index of Navigation and Underway Geophysical Data

Contents:

Index Chart - give track of cruise leg, dates, ports.

Track Charts - annotated with dates and hour ticks.

Profiles - depth, magnetic and gravity free air anomaly vs. distance.

Sample Index - list of begin/end times and positions of all underway records as well as samples and measurements from other disciplines collected on the leg.

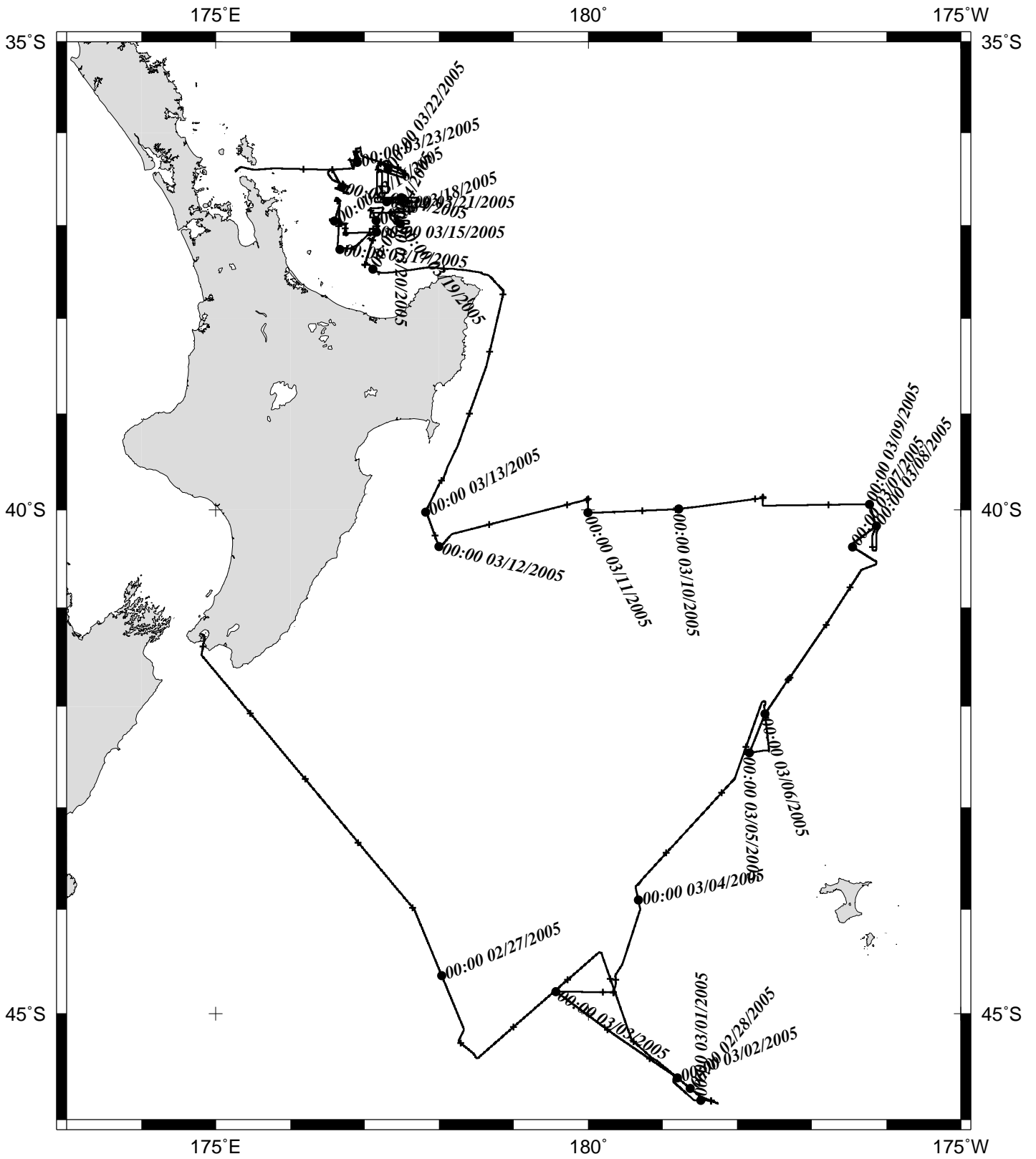
Note:

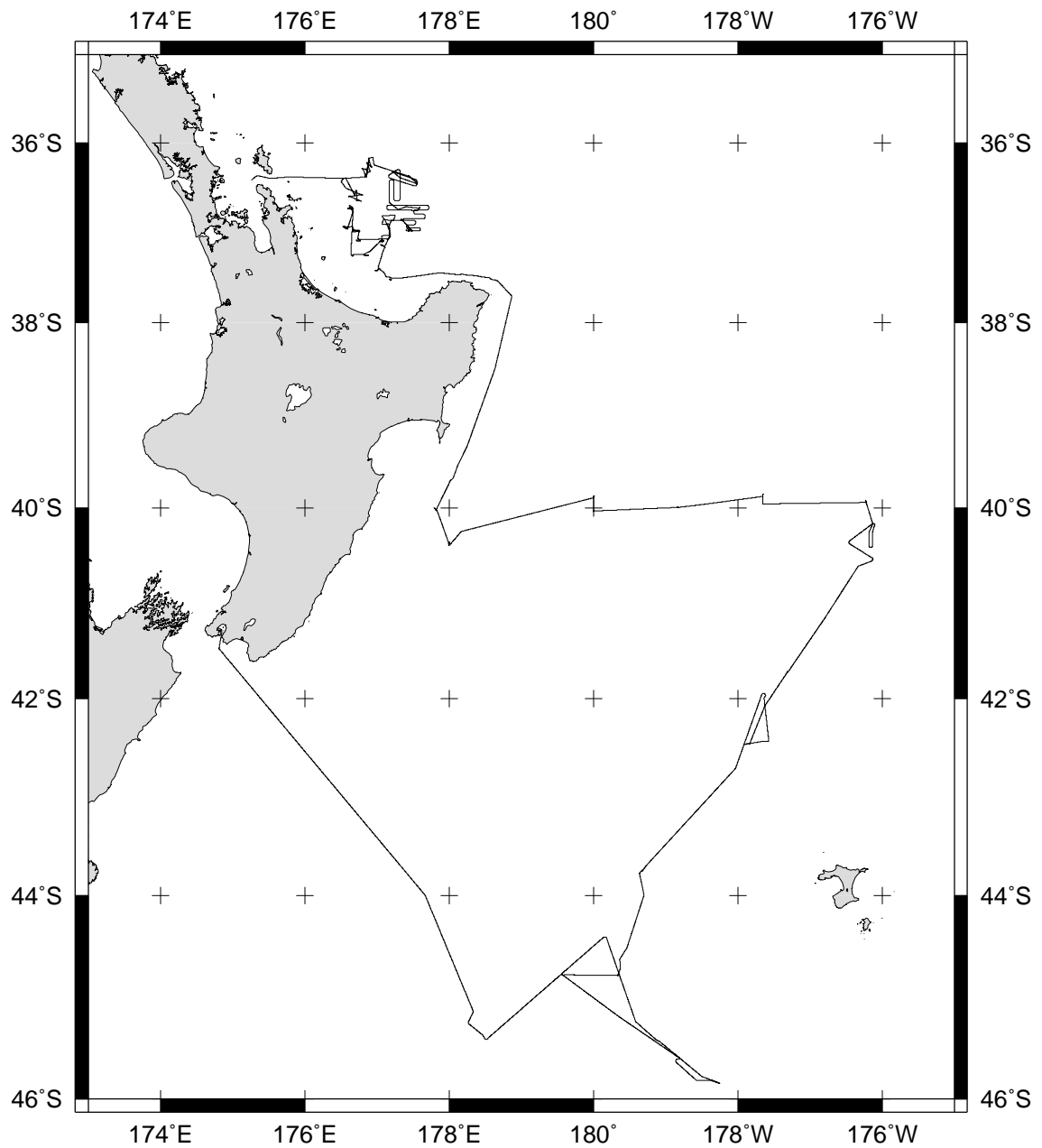
For information on the availability of this current digital data as well as archived digital data contact:

Stephen P. Miller
Geological Data Center
Scripps Institution of Oceanography
La Jolla, California 92093-0220
Phone: (858) 534-1898
Internet email: spmiller@ucsd.edu; or his website: <http://SIOExplorer@ucsd.edu>

Rev 05/2002

ZHNG03RR





ZHENG HE EXPEDITION LEG 3 (ZHNG03RR)

=====

CHIEF SCIENTIST: Elizabeth Sikes, Rutgers University

PORTS: Wellington - Auckland, New Zealand

DATES: 26 February - 24 March 2005

SHIP: R/V Revelle

TOTAL MILEAGE OF UNDERWAY DATA COLLECTED

Cruise-2589 miles

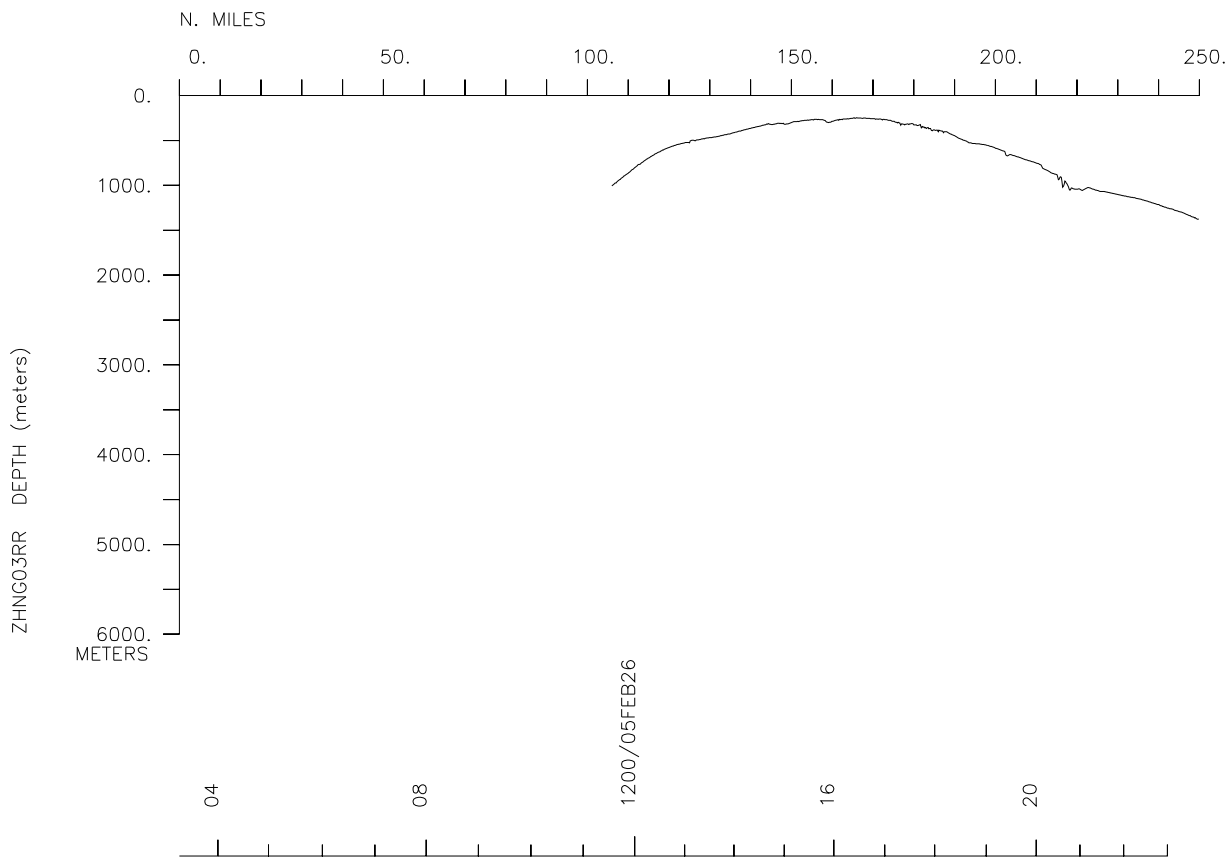
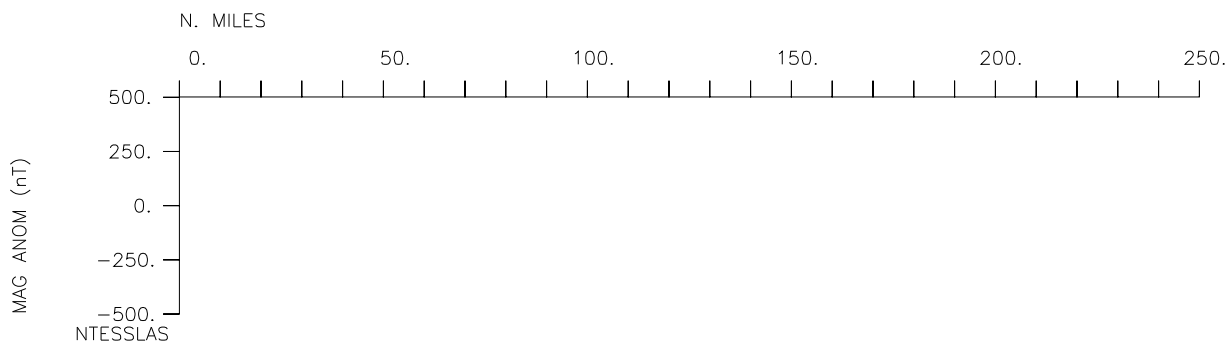
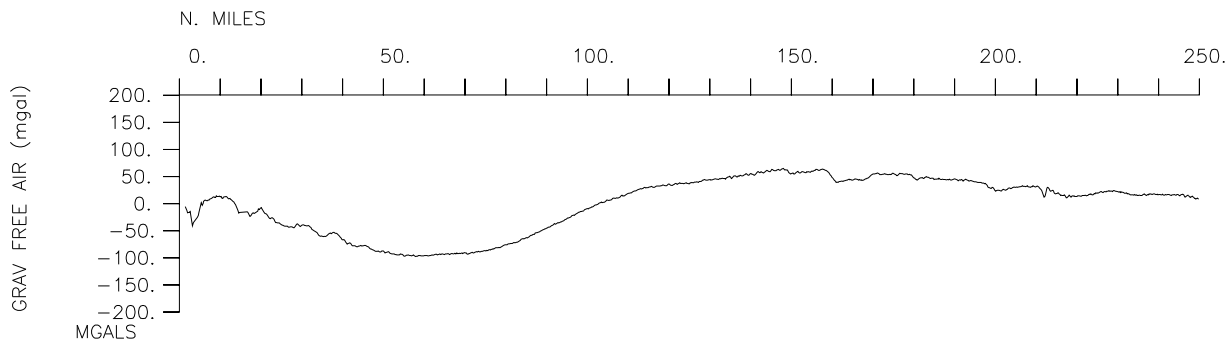
Magnetics-none collected

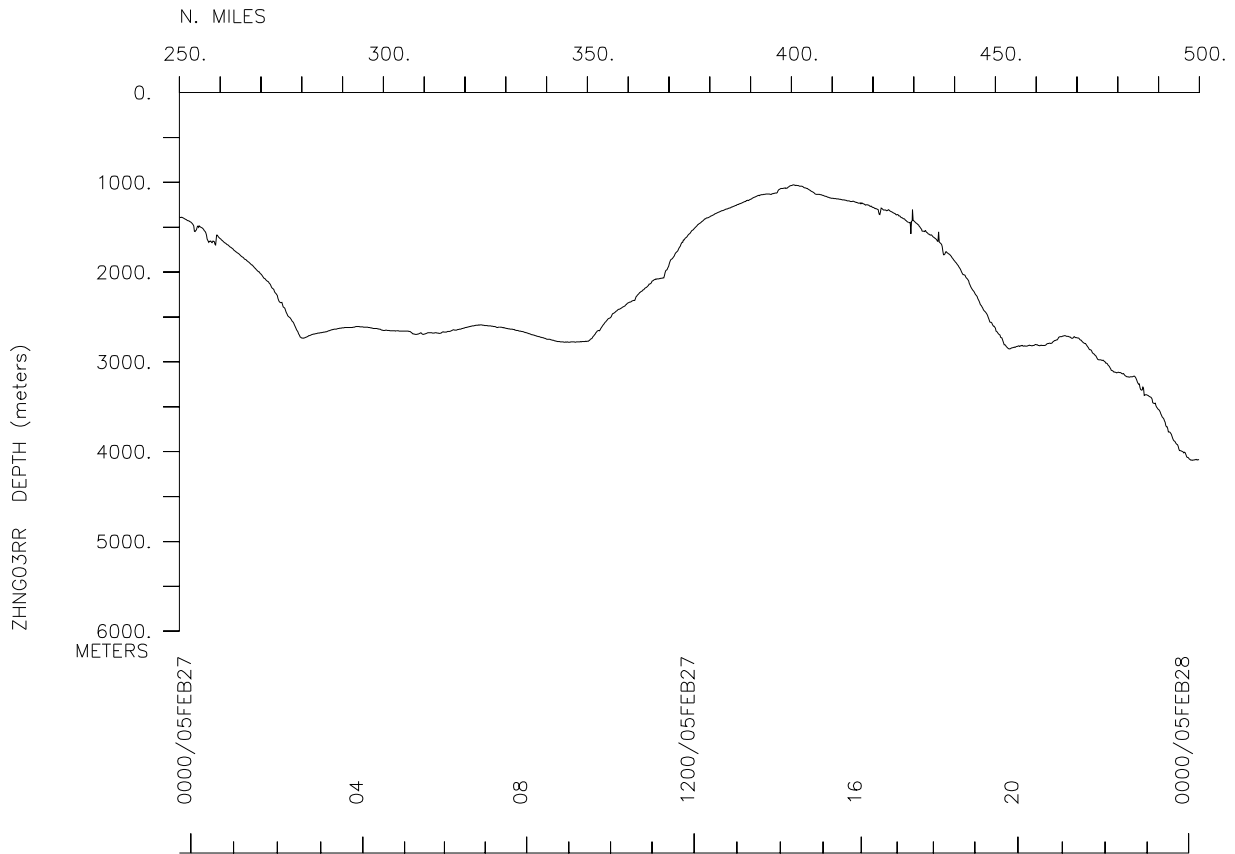
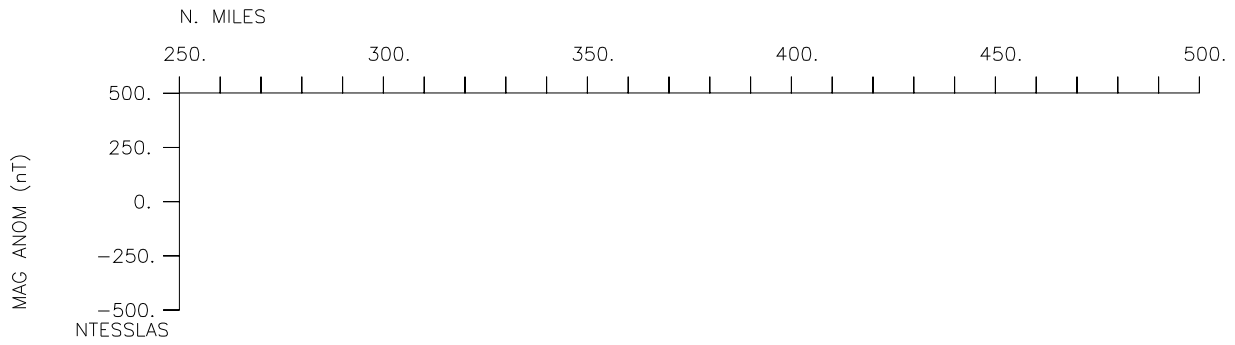
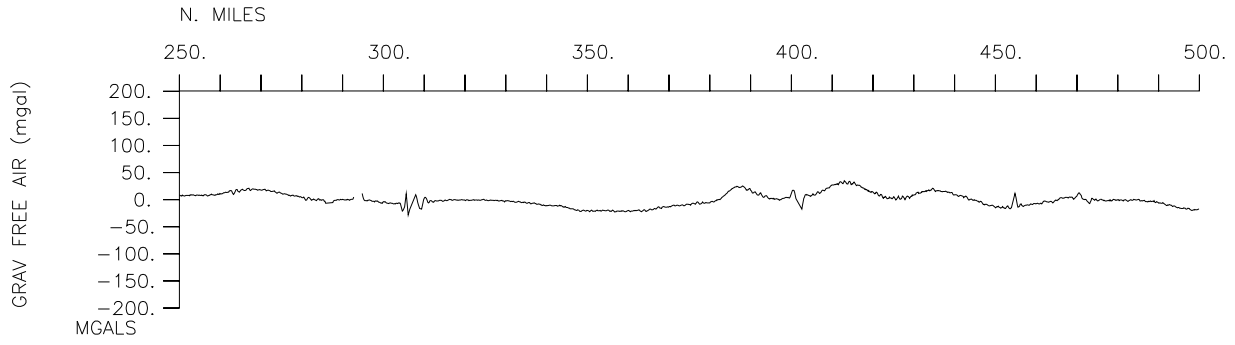
Bathymetry-2203 miles

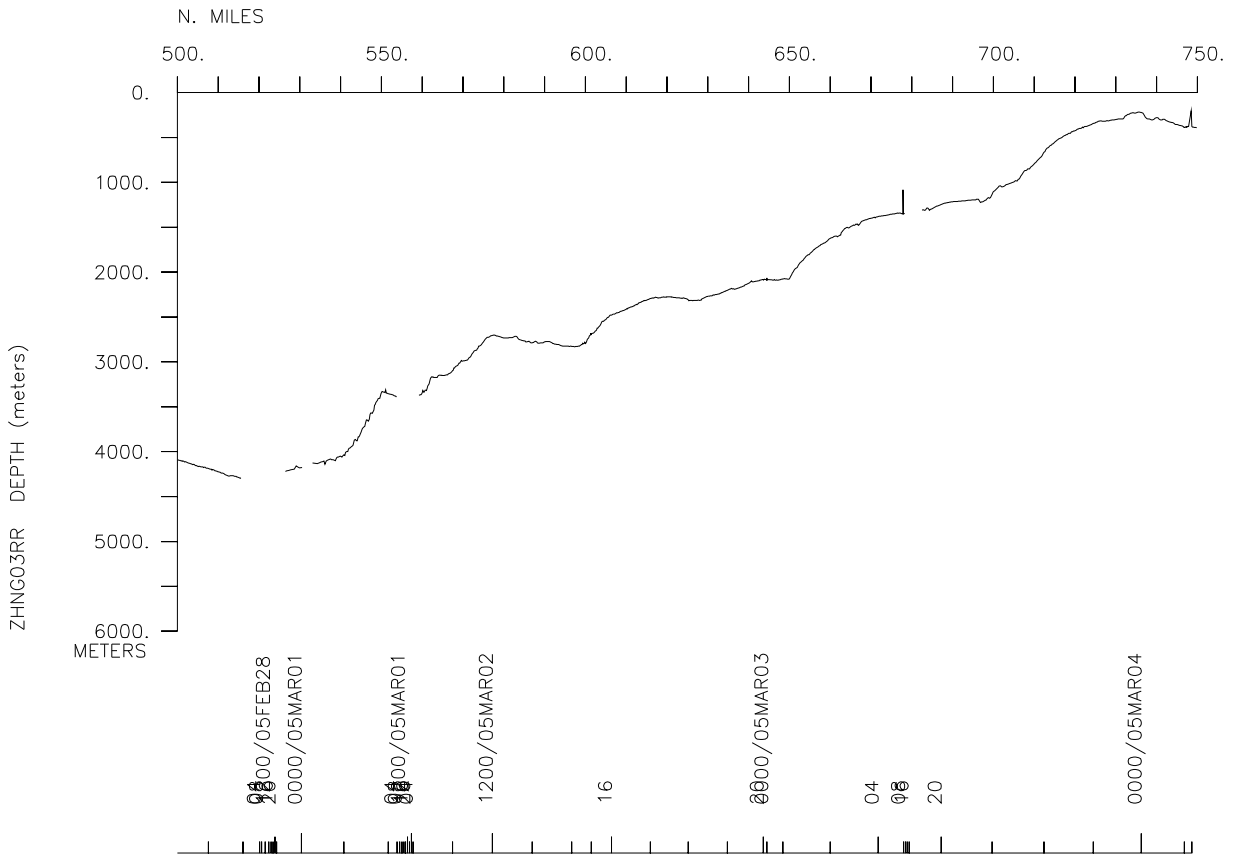
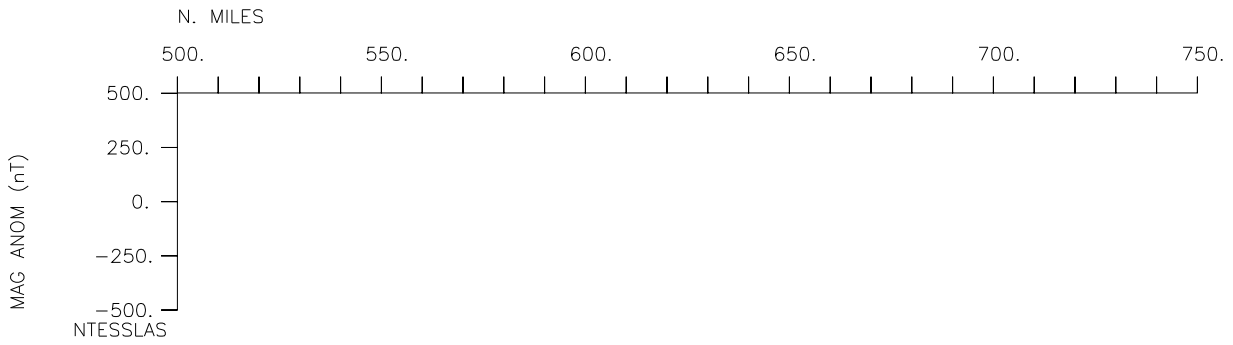
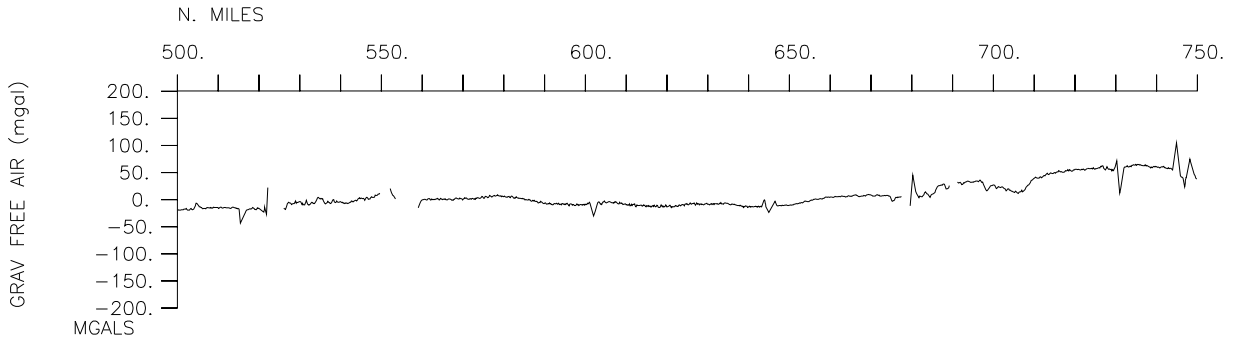
Seismic Reflection-none collected

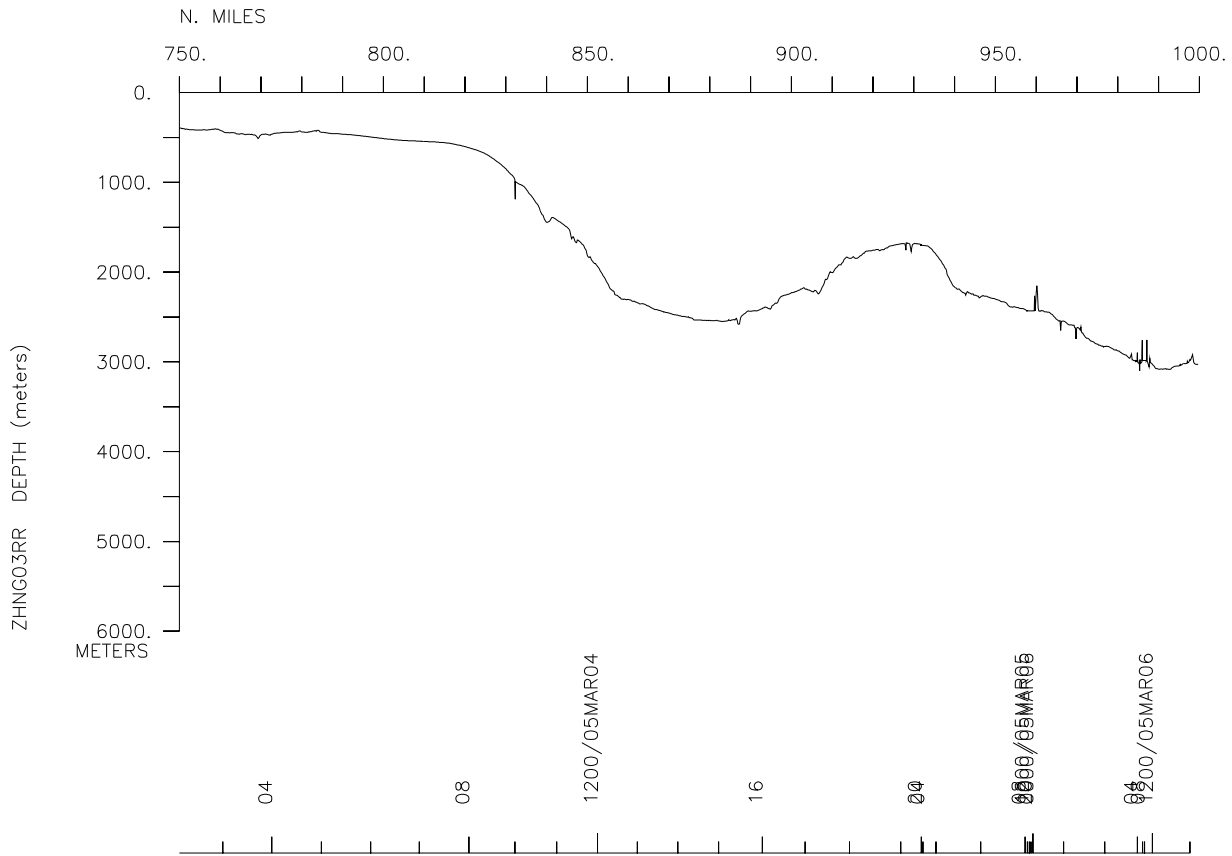
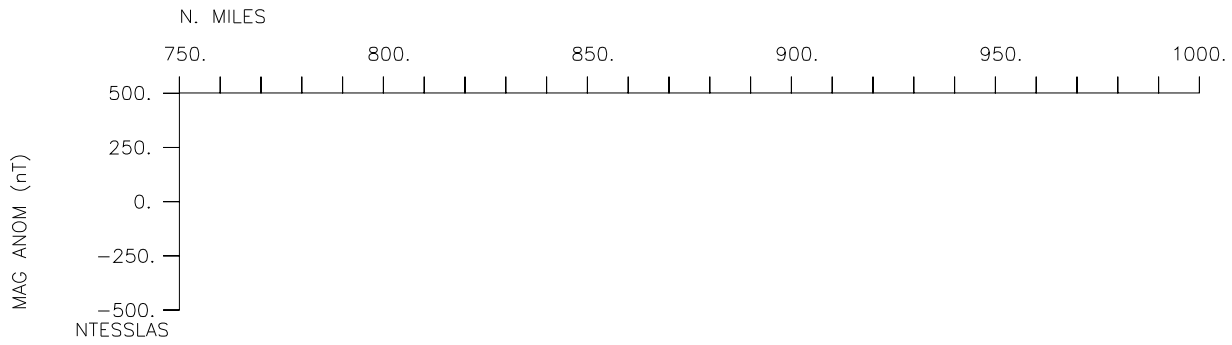
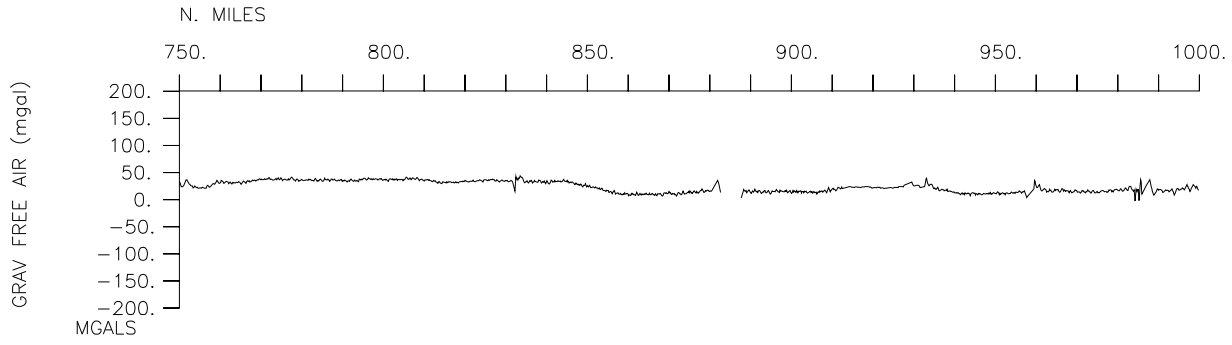
Multibeam-2203 miles

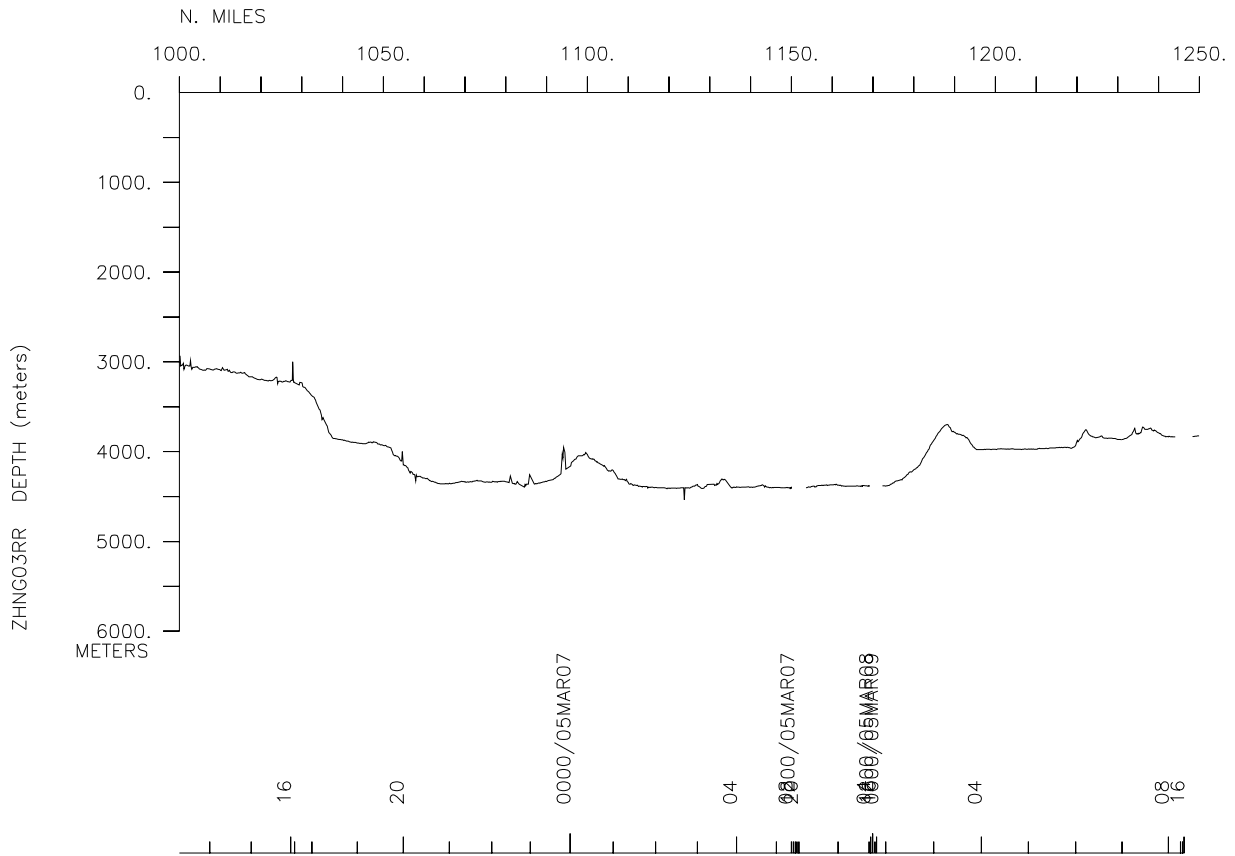
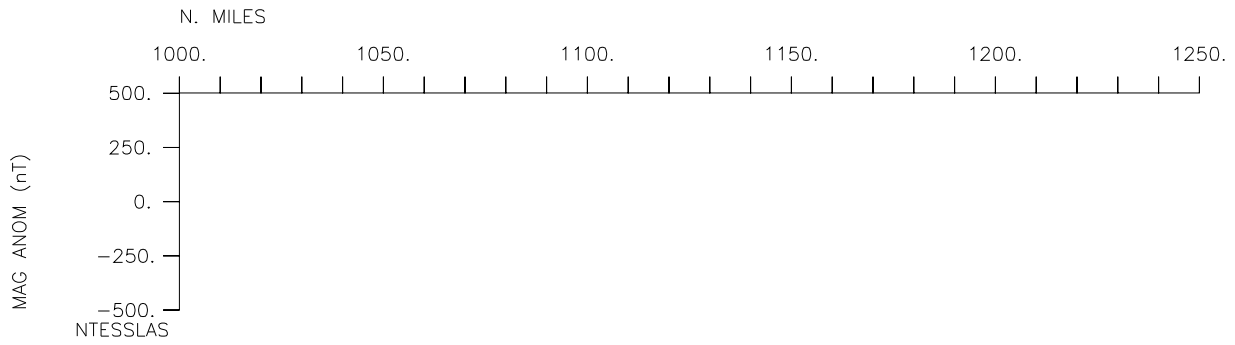
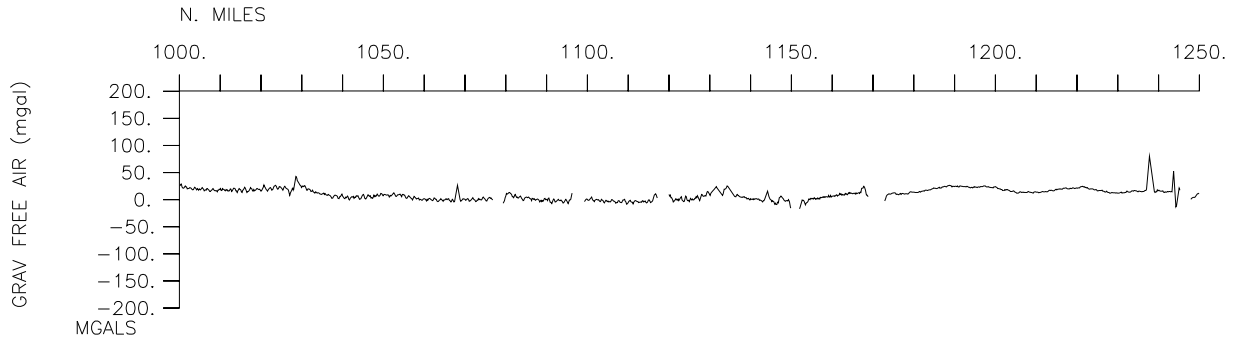
Gravity-2589 miles

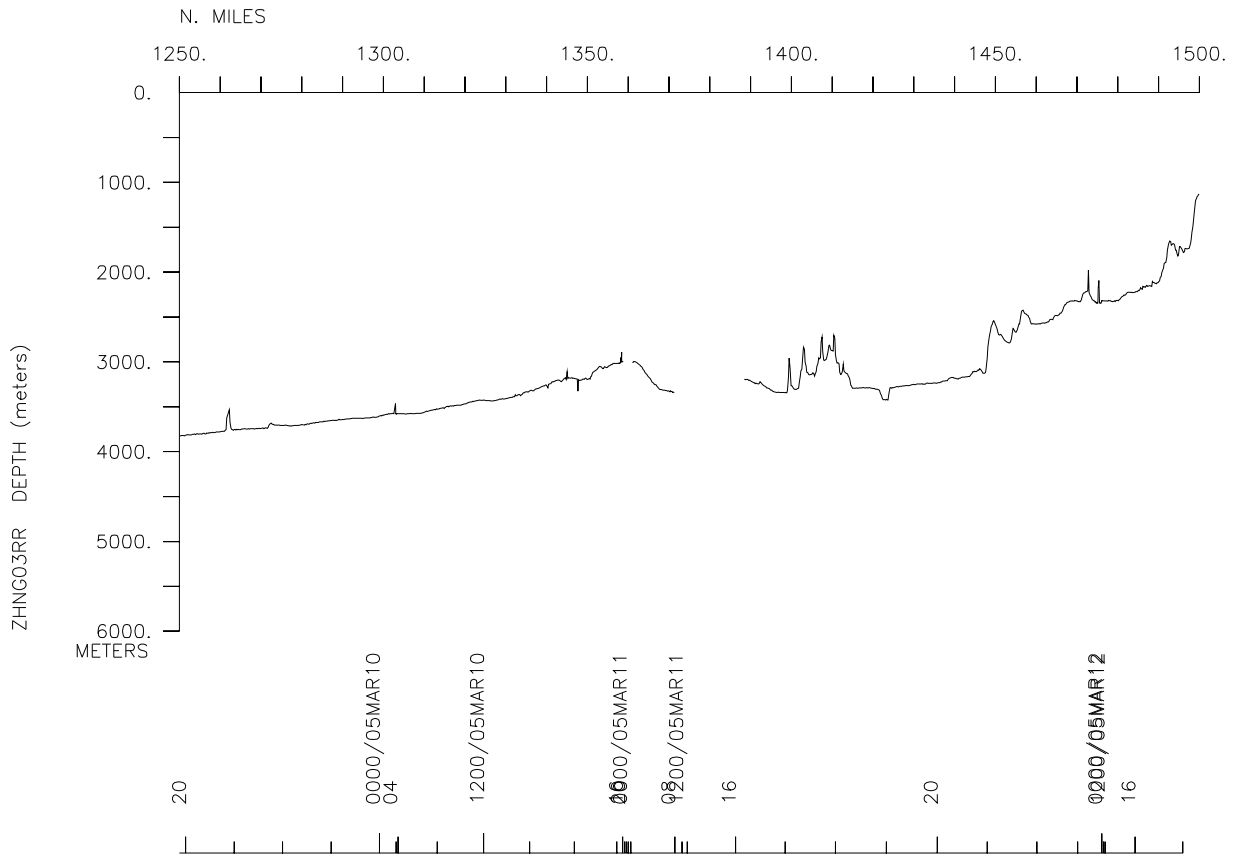
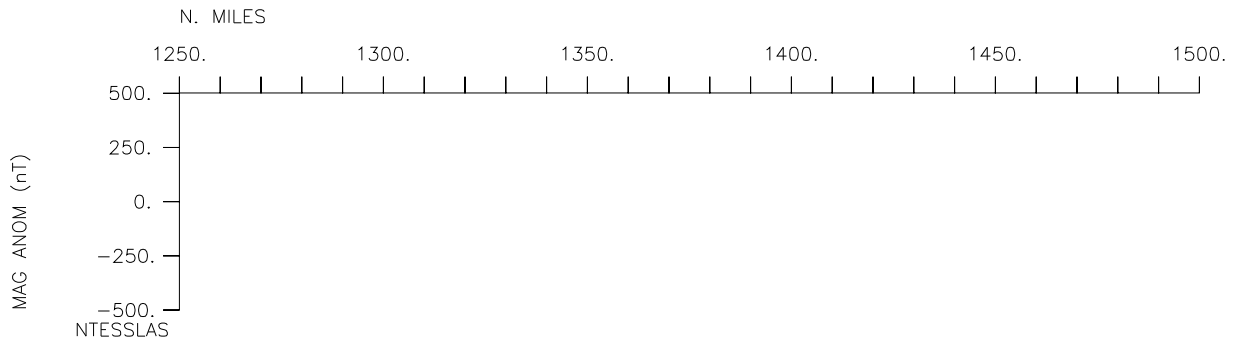
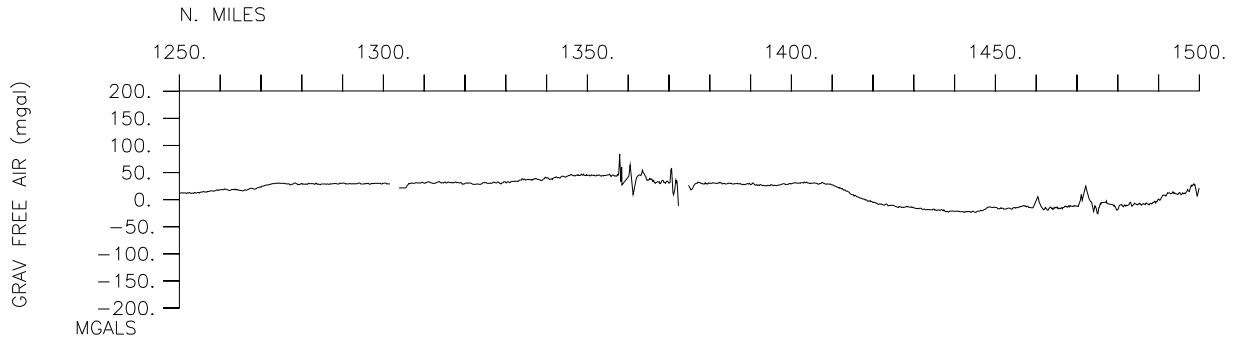


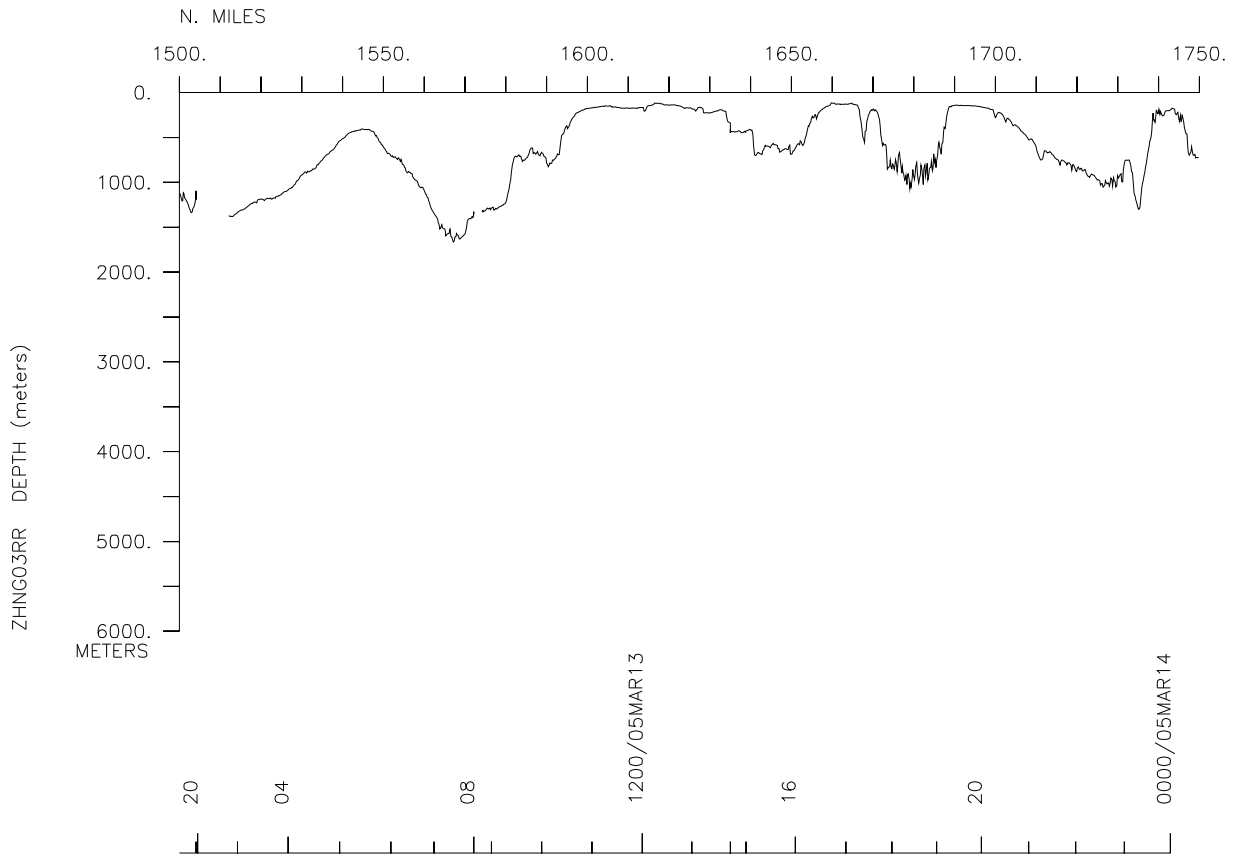
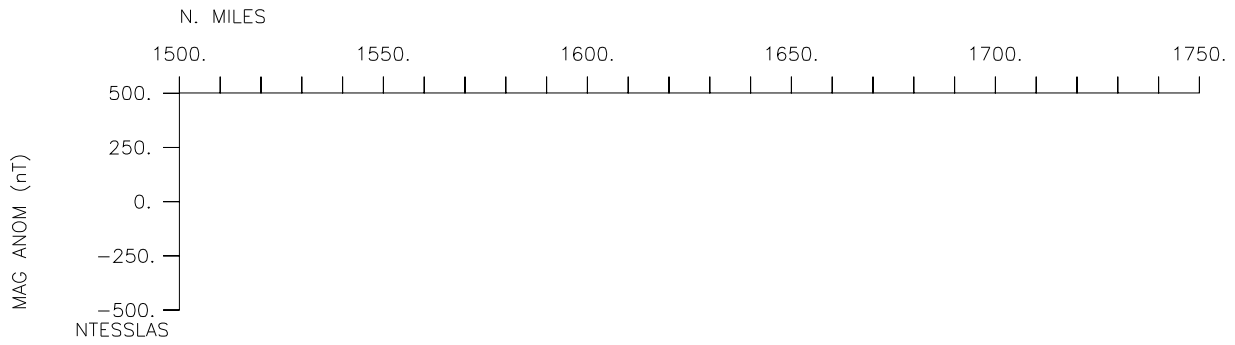
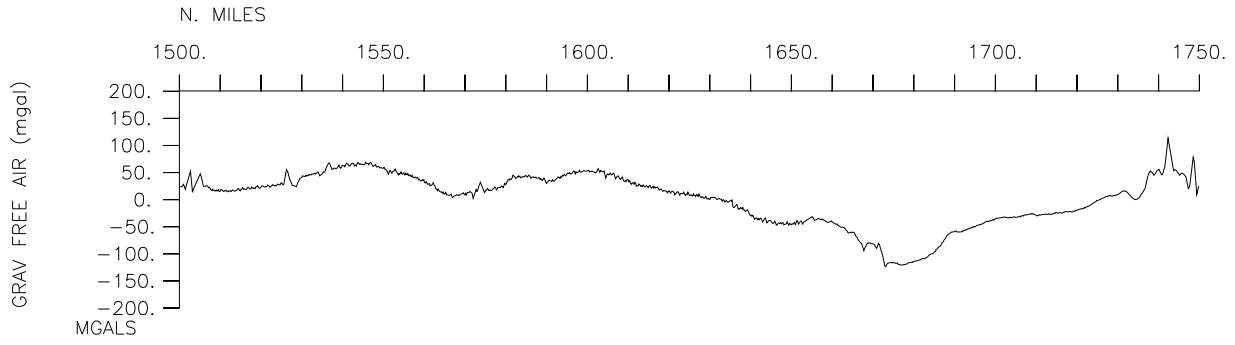


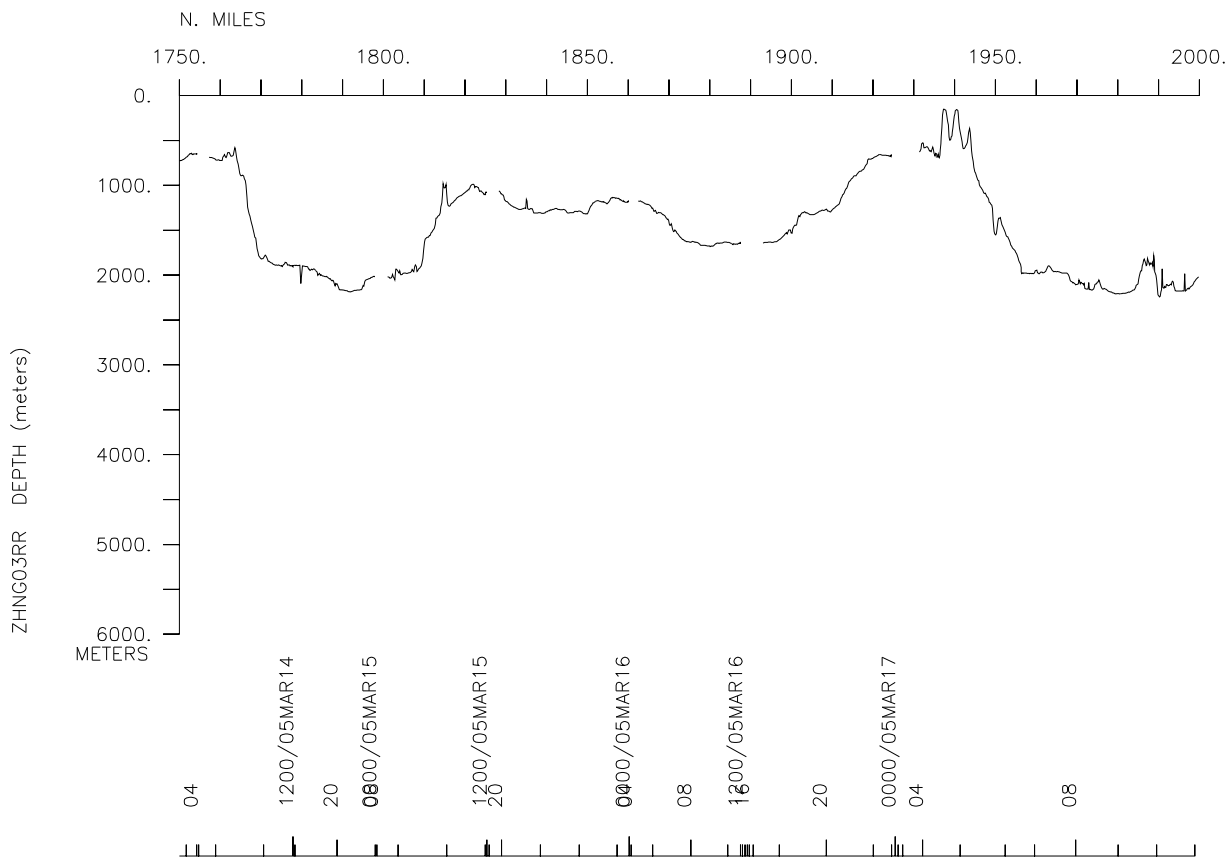
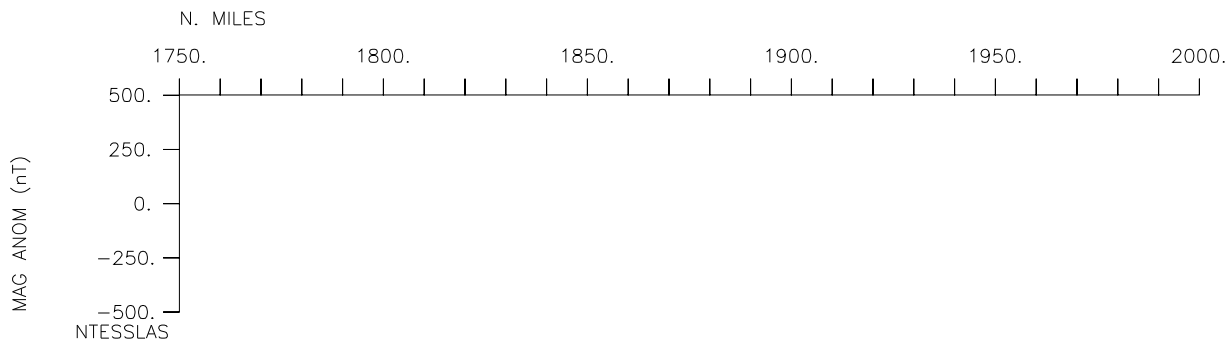
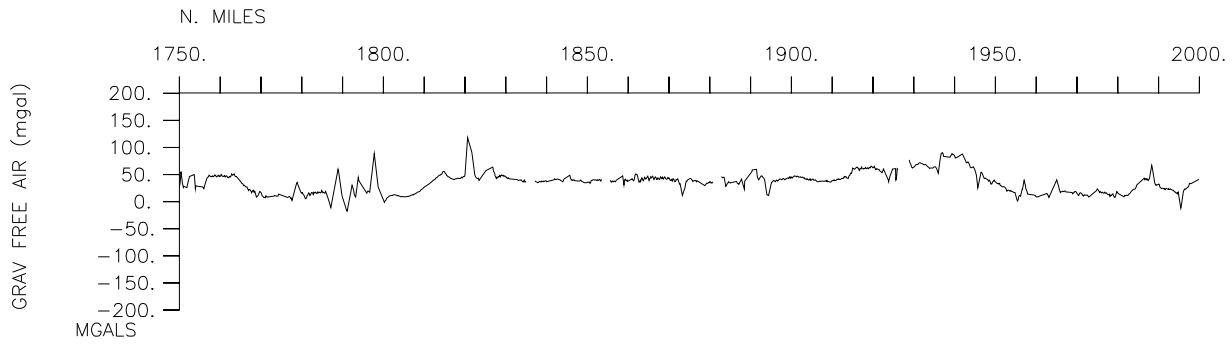


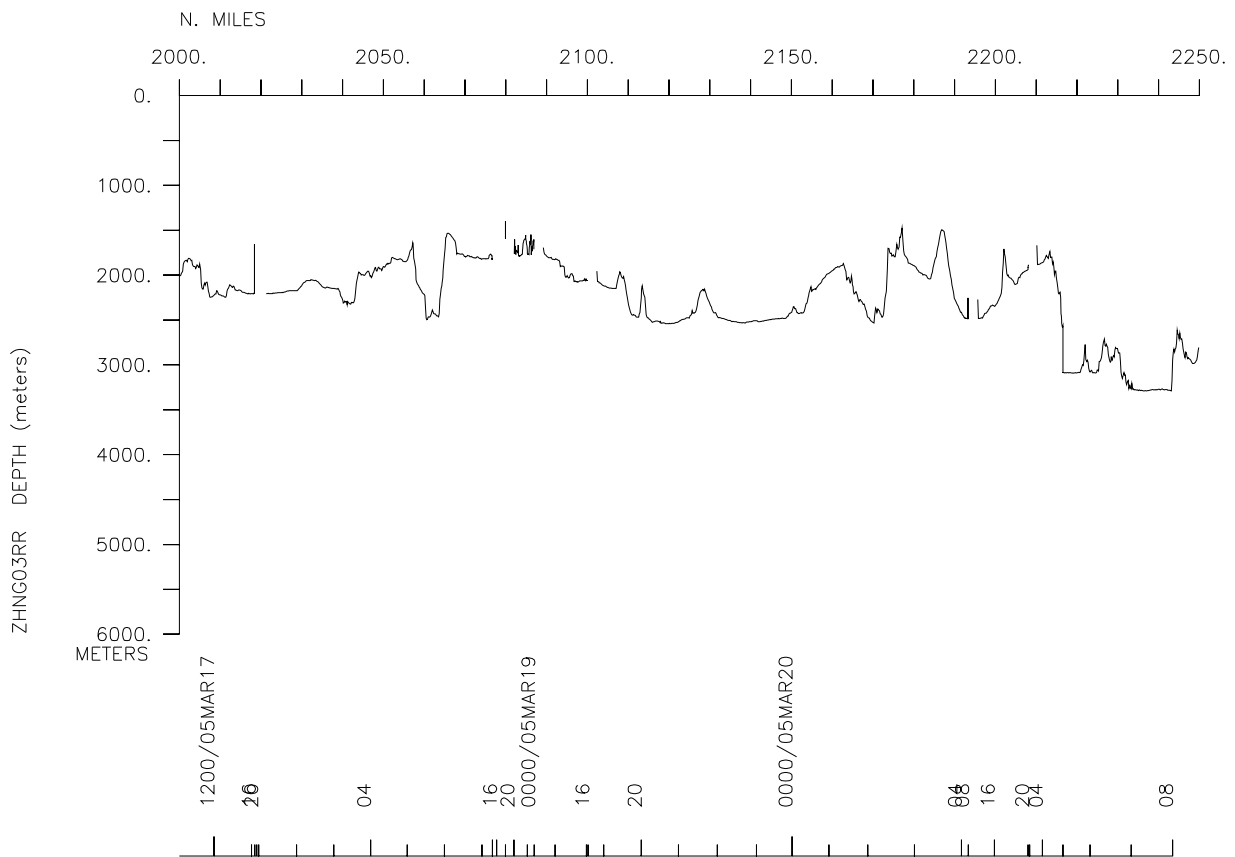
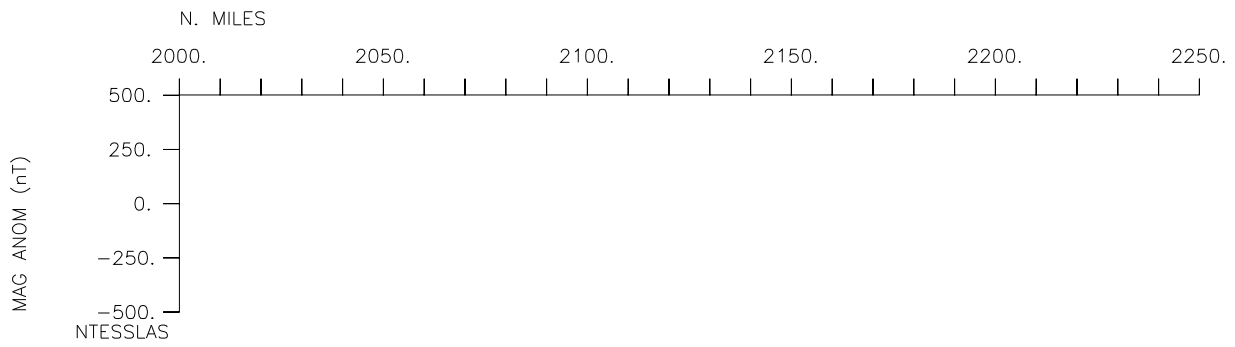
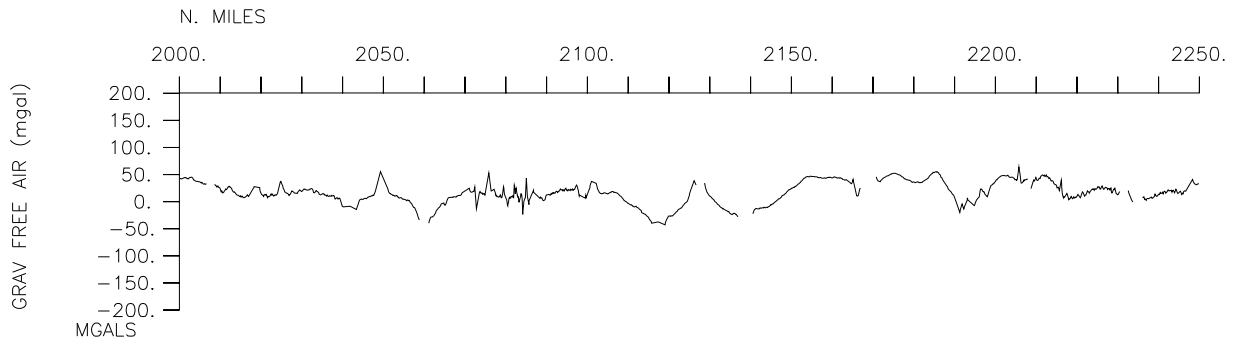


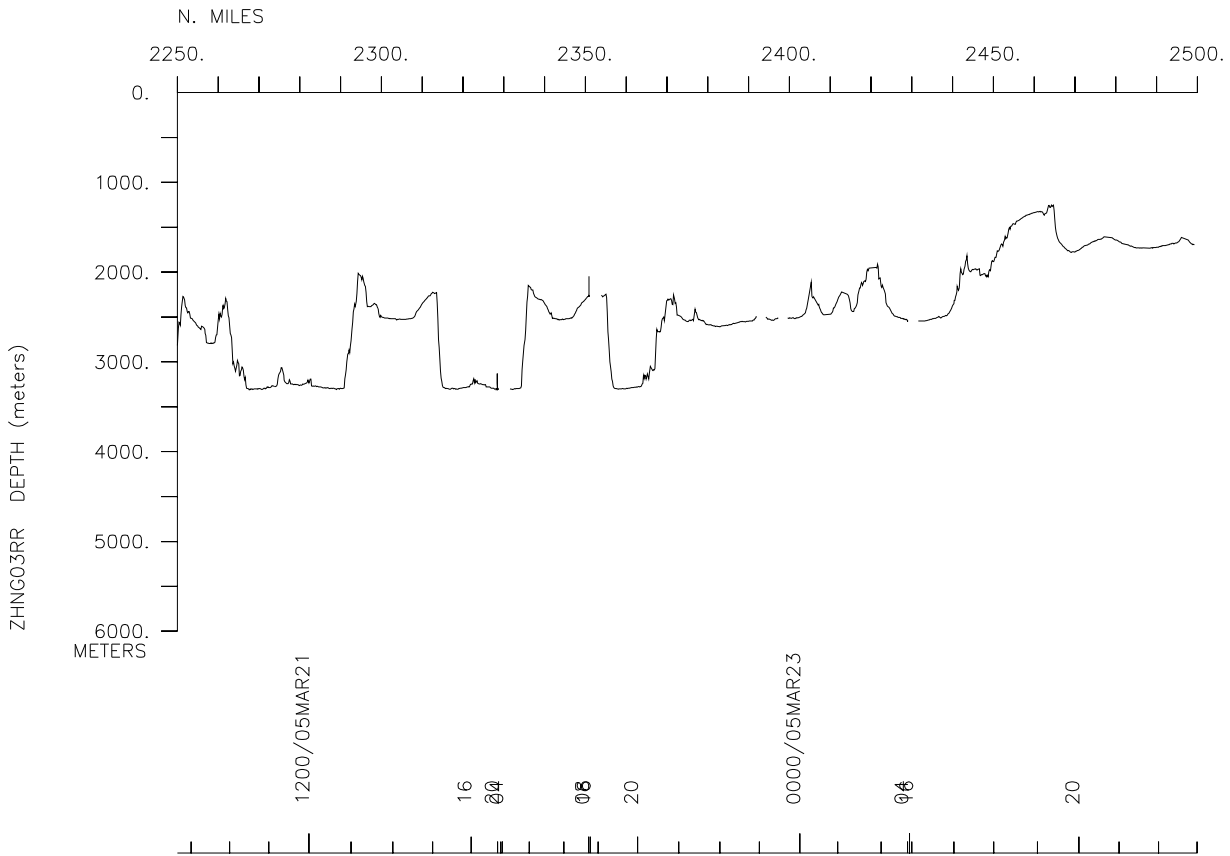
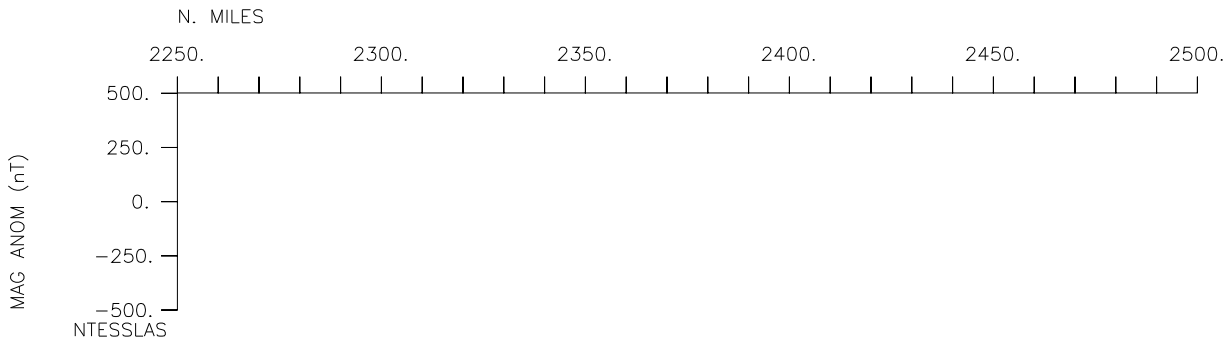
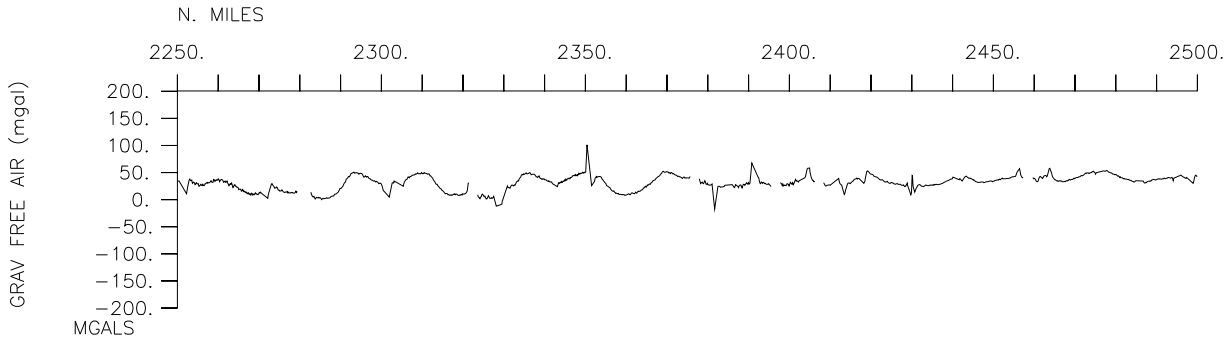


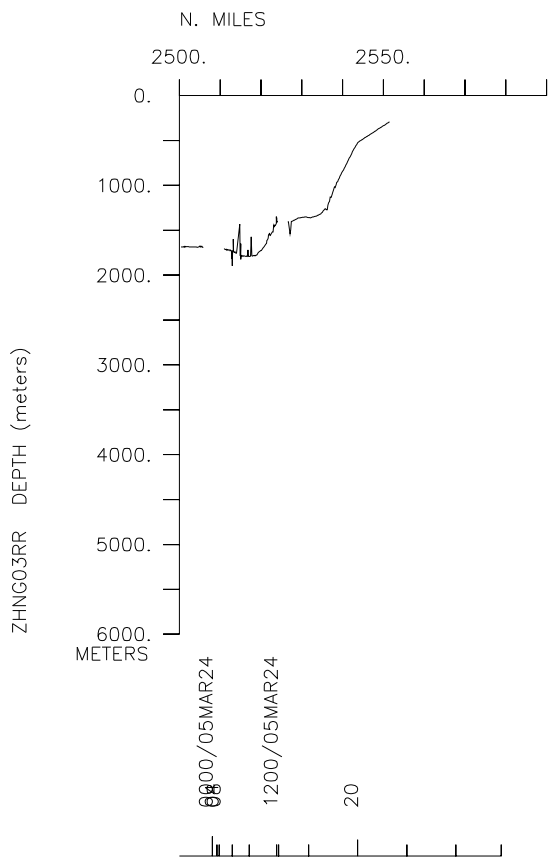
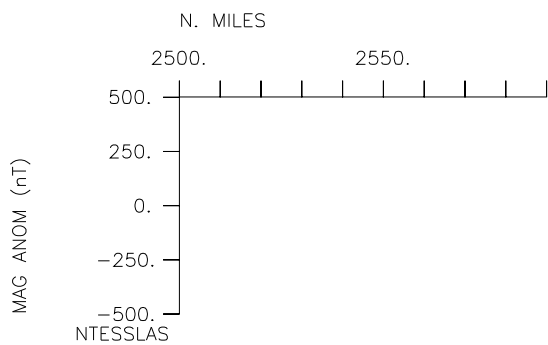
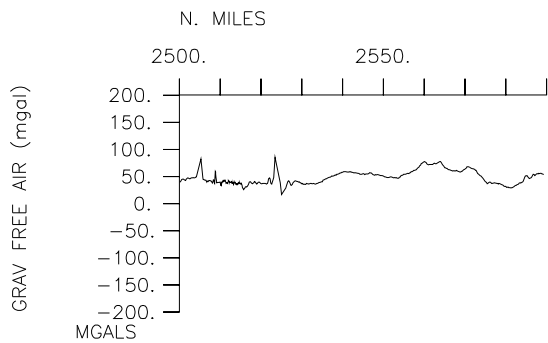












#*** THIS SAMPLE INDEX WAS CONVERTED FROM THE SHIP'S BRIDGE EVENT LOG.
 NO CORRECTIONS
 #*** WERE MADE IN THE SAMPLE IDENTIFIER FIELD. DISPOSITION CODES WERE
 NOT ADDED. IT
 #*** WAS NOT RUN THROUGH THE NAVIGATION PROGRAM. ALL POSITIONS ARE THOSE
 THAT WERE
 #*** GIVEN ON BOARD.
 #*** USE WITH CAUTION.

#*** Ports ***

0258	260205	LGPT B Wellington, NewZealand	41-17.00S 174-47.00E f
	ZHNG03RR		
2355	240305	LGPT E Auckland, New Zealand	36-51.00S 174-46.00E f
	ZHNG03RR		

#*** Personnel ***

#	*****NAME*****	*****TITLE*****	*****AFFILIATION*****
CRID			
#-----	-----	-----	-----

PECS SIX	Sikes, E.	Chief Scientist	Rutgers University
ZHNG03RR			
PECT STS	Sutherland, W.	Computer tech	Scripps Institution
ZHNG03RR			
PERT STS	Wilson, B.	Resident tech	Scripps Institution
ZHNG03RR			

#*** NOTES ***

#An 'X' in the (B)egin/(E)nd column following the sample code indicates
 no
 #sample or data recovered. A 'C' indicates continuation of data
 collection
 #from before the beginning or after the end of a particular leg, (moored
 #bottom instruments, for example.) The number appearing in the columns
 #between the sample identifier and the disposition code, for many sample
 #entries, is the water depth in corrected meters.


```

#GMT DDMMYY      SAMP B SAMPLE          DISP          p
CRUISE
#TIME DATE  TZ CODE E IDENTIFIER          CODE LATITUDE  LONGITUDE  c
LEG-SHIP
#-----
-----

```

```

**** Underway Data Curator - Shipboard Technical Support Group ext.41899
****
**** Digital Data Curator - Geological Data Center, S.P. Miller,
ext.41898 ****

```

```

**** MultiBeam Data (SIMRAD) ****

```

```

1133 260205      MBSI B EM120 Simard          GDC  42-38.99S 176-07.10E g
ZHNG03RR
2039 240305      MBSI E EM120 Simard          GDC  36-23.39S 176-08.35E g
ZHNG03RR

```

```

**** Digital Gravity ****

```

```

2039 260205      GVDD B digital gravity      GDC  41-16.39S 174-49.11E g
ZHNG03RR
2355 240305      GVDD E digital gravity      GDC  36-25.14S 175-15.55E g
ZHNG03RR

```

```

**** Integrated Meteorological Acquisition System ****

```

```

2039 260205      IMET B weather measurements GDC  41-16.39S 174-49.11E g
ZHNG03RR
2355 240305      IMET E weather measurements GDC  36-25.14S 175-15.55E g
ZHNG03RR

```

```

**** Acoustic Doppler Current Profiler ****

```

```

2039 260205      ACDP B current measurements GDC  41-16.39S 174-49.11E g
ZHNG03RR
2355 240305      ACDP E current measurements GDC  36-25.14S 175-15.55E g
ZHNG03RR

```

#GMT	DDMMYY	SAMP	B	SAMPLE	DISP				p
#TIME	DATE	TZ	CODE	E	IDENTIFIER	CODE	LATITUDE	LONGITUDE	c
LEG-SHIP									
#	-----	--	----	-	-----	----	-----	-----	-

#*** Cores ***									
0240	280205		COPS		ston core 1 deployed		45-49.39S	178-21.10W	g
					ZHNG03RR				
0541	280205		COPS		ston core 1 at 4233m		45-49.44S	178-20.95W	g
					ZHNG03RR				
0852	280205		COPS		ston Core 1 on deck		45-49.49S	178-21.05W	g
					ZHNG03RR				
1209	280205		COXX		lti core 4 deployed		45-49.34S	178-21.01W	g
					ZHNG03RR				
1621	280205		COXX		lticore 4 aboard MS		45-49.33S	178-21.02W	g
					ZHNG03RR				
1721	280205		COXX		lticore 5 deployed M		45-49.33S	178-21.02W	g
					ZHNG03RR				
1942	280205		COXX		lticore 5 at 4241m A		45-49.34S	178-21.02W	g
					ZHNG03RR				
2208	280205		COXX		lticore 5 on deck AA		45-49.33S	178-21.02W	g
					ZHNG03RR				
0030	020305		COPS		ston core 6 deployed		45-36.49S	178-48.09W	g
					ZHNG03RR				
0421	020305		COPS		ston core 6 on deck		45-36.49S	178-48.09W	g
					ZHNG03RR				
0617	020305		COXX		lticore 7 deployed M		45-36.49S	178-48.09W	g
					ZHNG03RR				
0750	020305		COXX		lticore 7 at 3372m A		45-36.49S	178-48.09W	g
					ZHNG03RR				
0934	020305		COXX		lticore 7 on deck AA		45-36.49S	178-48.09W	g
					ZHNG03RR				
2143	020305		COPS		ston core 10 deploye		44-47.37S	179-34.11E	g
					ZHNG03RR				
2236	020305		COPS		ston core 10 at 2044		44-47.37S	179-34.11E	g
					ZHNG03RR				
0510	030305		COPS		ston core 11 deploye		44-47.83S	179-39.76W	g
					ZHNG03RR				
0516	030305		COPS		ston core 11 at 1316		44-47.83S	179-39.76W	g
					ZHNG03RR				
0700	030305		COPS		ston core 11 on deck		44-47.83S	179-39.75W	g
					ZHNG03RR				
0900	030305		COXX		lticore 12 deployed		44-47.83S	179-39.75W	g
					ZHNG03RR				
0954	030305		COXX		lticore 12 at 1356m		44-47.83S	179-39.76W	g
					ZHNG03RR				
1046	030305		COXX		lticore 12 on deck A		44-47.83S	179-39.76W	g
					ZHNG03RR				
1151	030305		COXX		lticore 12A deployed		44-47.82S	179-39.76W	g
					ZHNG03RR				

1335	030305	COXX	lticore 12A on deck	44-47.83S 179-39.76W	g
	ZHNG03RR				
1430	030305	COXX	lticore 13 deployed	44-47.83S 179-39.75W	g
	ZHNG03RR				
1506	030305	COXX	nticore 13 on 1332m	44-47.83S 179-39.76W	g
	ZHNG03RR				
1559	030305	COXX	lticore 13 complete	44-47.83S 179-39.76W	g
	ZHNG03RR				
1654	030305	COXX	lticore 14 deployed	44-47.83S 179-39.76W	g
	ZHNG03RR				
1754	030305	COXX	lticore 14 at 1346m	44-47.83S 179-39.76W	g
	ZHNG03RR				
1853	030305	COXX	lticore 14 on deck A	44-47.83S 179-39.76W	g
	ZHNG03RR				
2032	040305	COPS	ston core 19 deploye	42-27.73S 177-50.15W	g
	ZHNG03RR				
2115	040305	COPS	ston core 19 @ 1663m	42-27.73S 177-50.15W	g
	ZHNG03RR				
2245	040305	COPS	ston core 19 on deck	42-27.72S 177-50.16W	g
	ZHNG03RR				
0050	050305	COXX	lticore 21 deployed	42-27.85S 177-50.17W	g
	ZHNG03RR				
0150	050305	COXX	lticore 21 @ 1692m E	42-27.85S 177-50.17W	g
	ZHNG03RR				
0240	050305	COXX	lticore 21 on deck E	42-27.85S 177-50.17W	g
	ZHNG03RR				
0318	050305	COXX	lticore 22 deployed	42-27.85S 177-50.17W	g
	ZHNG03RR				
0415	050305	COXX	lticore 22 @ 1692m M	42-27.85S 177-50.17W	g
	ZHNG03RR				
0510	050305	COXX	lticore 22 aboard MS	42-27.85S 177-50.17W	g
	ZHNG03RR				
0852	050305	COXX	lticore 25 deployed	42-04.45S 177-37.60W	g
	ZHNG03RR				
1008	050305	COXX	lticore 25 @ 2424m A	42-04.45S 177-37.60W	g
	ZHNG03RR				
1120	050305	COXX	lticore 25 on deck E	42-04.45S 177-37.59W	g
	ZHNG03RR				
1155	050305	COXX	lticore 26 deployed	42-04.45S 177-37.59W	g
	ZHNG03RR				
1304	050305	COXX	lticore 26 @ 2418m E	42-04.45S 177-37.60W	g
	ZHNG03RR				
1424	050305	COXX	lticore 26 on deck E	42-04.45S 177-37.60W	g
	ZHNG03RR				
1516	050305	COXX	lticore 27 deployed	42-04.45S 177-37.59W	g
	ZHNG03RR				
1638	050305	COXX	lticore 27 @ 2410m M	42-04.45S 177-37.60W	g
	ZHNG03RR				
1751	050305	COXX	lticore 27 aboard MS	42-04.45S 177-37.60W	g
	ZHNG03RR				
2005	050305	COPS	ston core 28 deploye	42-04.45S 177-37.60W	g
	ZHNG03RR				
2105	050305	COPS	ston core 28 @ 2375m	42-04.45S 177-37.60W	g
	ZHNG03RR				

2320 050305	COPS	ston core 28 on deck	42-04.45S 177-37.60W g
ZHNG03RR			
0617 060305	COPS	ston core 29 deploye	41-43.86S 177-19.08W g
ZHNG03RR			
0743 060305	COPS	ston core 29 @ 2948m	41-43.86S 177-19.08W g
ZHNG03RR			
1000 060305	COPS	ston core 29 on deck	41-43.86S 177-19.08W g
ZHNG03RR			
0631 070305	COPS	ston core 31 deploye	40-09.93S 176-08.03W g
ZHNG03RR			
0853 070305	COPS	ston core 31 @ 4406m	40-09.94S 176-08.02W g
ZHNG03RR			
1140 070305	COPS	ston core 31 on deck	40-09.92S 176-08.07W g
ZHNG03RR			
1330 070305	COXX	lticore 32 deployed	40-09.92S 176-08.06W g
ZHNG03RR			
1547 070305	COXX	lticore 32 @4396m MB	40-09.92S 176-08.05W g
ZHNG03RR			
1752 070305	COXX	lticore 32 aboard MS	40-09.92S 176-08.06W g
ZHNG03RR			
1820 070305	COXX	lticore 33 deployed	40-09.92S 176-08.05W g
ZHNG03RR			
2051 070305	COXX	lticore 33 @ 4394m A	40-09.92S 176-08.06W g
ZHNG03RR			
2300 070305	COXX	lticore 33 on deck E	40-09.92S 176-08.04W g
ZHNG03RR			
0416 080305	COPS	ston core 36 deploye	39-56.48S 176-13.42W g
ZHNG03RR			
0613 080305	COPS	ston core 36 at 4368	39-56.48S 176-13.42W g
ZHNG03RR			
0902 080305	COPS	ston core 36 on deck	39-56.48S 176-13.43W g
ZHNG03RR			
1020 080305	COXX	lticore 37 deployed	39-56.48S 176-13.43W g
ZHNG03RR			
1300 080305	COXX	lticore 37 at 4397m	39-56.47S 176-13.44W g
ZHNG03RR			
1508 080305	COXX	lticore 37 aboard MS	39-56.46S 176-13.43W g
ZHNG03RR			
1615 080305	COXX	lticore 38 deployed	39-56.47S 176-13.44W g
ZHNG03RR			
1837 080305	COXX	lticore 38 at 4387m	39-56.47S 176-13.43W g
ZHNG03RR			
2039 080305	COXX	lticore 38 on deck A	39-56.47S 176-13.43W g
ZHNG03RR			
2106 080305	COGV	avity core 39 deploy	39-56.47S 176-13.43W g
ZHNG03RR			
1125 080305	COGV	avity core 39 at 440	39-56.48S 176-13.44W g
ZHNG03RR			
0135 090305	COGV	avity core 39 on dec	39-56.47S 176-13.43W g
ZHNG03RR			
0837 090305	COGV	avity core 40 deploy	39-52.65S 177-39.46W g
ZHNG03RR			
1024 090305	COGV	avity core 40 at 383	39-52.65S 177-39.47W g
ZHNG03RR			

1230	090305	COGV	avity core 40 on dec	39-52.65S 177-39.46W	g
	ZHNG03RR				
1425	090305	COPS	ston core 41 deploye	39-52.65S 177-39.46W	g
	ZHNG03RR				
1604	090305	COPS	ston core 41 at 3803	39-52.64S 177-39.47W	g
	ZHNG03RR				
1825	090305	COPS	ston core 41 aboard	39-52.65S 177-39.46W	g
	ZHNG03RR				
0040	100305	COXX	lticore 42 deployed	39-59.65S 178-49.35W	g
	ZHNG03RR				
0240	100305	COXX	lticore 42 at 3558m	39-59.65S 178-49.35W	g
	ZHNG03RR				
0415	100305	COXX	lticore #2 aboard MS	39-59.65S 178-49.35W	g
	ZHNG03RR				
0602	100305	COPS	ston core 44 deploye	39-59.65S 178-49.35W	g
	ZHNG03RR				
0718	100305	COPS	ston core 44 at 3547	39-59.65S 178-49.35W	g
	ZHNG03RR				
0730	100305	COPS	ston core 44 lost on	39-59.65S 178-49.35W	g
	ZHNG03RR				
1826	100305	COXX	lticore 45 deployed	40-01.97S 179-59.75E	g
	ZHNG03RR				
2006	100305	COXX	lticore 45 at 2997m	40-01.97S 179-59.75E	g
	ZHNG03RR				
2134	100305	COXX	lticore 45 on deck A	40-01.90S 179-59.78E	g
	ZHNG03RR				
0248	110305	COPS	ston core 47 deploye	40-01.84S 179-59.79E	g
	ZHNG03RR				
0402	110305	COPS	ston core 47 at 2976	40-01.84S 179-59.78E	g
	ZHNG03RR				
0545	110305	COPS	ston core 47 aboard	40-01.84S 179-59.79E	g
	ZHNG03RR				
0909	110305	COPS	ston core 48 deploye	39-53.68S 179-58.85E	g
	ZHNG03RR				
1055	110305	COPS	ston core 48 at 3355	39-53.69S 179-58.85E	g
	ZHNG03RR				
1311	110305	COPS	ston core 48 on deck	39-53.69S 179-58.85E	g
	ZHNG03RR				
0030	120305	COXX	lticore 49 deployed	40-22.66S 177-59.72E	g
	ZHNG03RR				
0132	120305	COXX	lticore 49 at 2295m	40-22.66S 177-59.72E	g
	ZHNG03RR				
0241	120305	COXX	lticore #49 aboard M	40-22.66S 177-59.72E	g
	ZHNG03RR				
0604	120305	COXX	lticore 51 deployed	40-22.66S 177-59.72E	g
	ZHNG03RR				
0720	120305	COXX	lticore 51 on at 231	40-22.66S 177-59.72E	g
	ZHNG03RR				
0833	120305	COXX	lticore 51 on deck A	40-22.66S 177-59.72E	g
	ZHNG03RR				
1010	120305	COPS	ston core 52 deploye	40-22.65S 177-59.72E	g
	ZHNG03RR				
1115	120305	COPS	ston core 52 at 2290	40-22.65S 177-59.71E	g
	ZHNG03RR				

1405	120305	COPS	ston core 52 on deck	40-22.74S 177-59.62E g
	ZHNG03RR			
1819	120305	COXX	lticore 53 deployed	40-01.32S 177-49.17E g
	ZHNG03RR			
1859	120305	COXX	lticore 53 at 1185m	40-01.32S 177-49.17E g
	ZHNG03RR			
1944	120305	COXX	lticore 53 on deck A	40-01.33S 177-49.17E g
	ZHNG03RR			
2024	120305	COXX	lticore 55 deployed	40-01.32S 177-49.10E g
	ZHNG03RR			
2105	120305	COXX	lticore 55 at 1185m	40-01.32S 177-49.10E g
	ZHNG03RR			
2148	120305	COXX	lticore 55 on deck A	40-01.32S 177-49.10E g
	ZHNG03RR			
2306	120305	COPS	stom core 56 depoyed	40-01.32S 177-49.10E g
	ZHNG03RR			
0006	130305	COPS	ston core 56 at 1160	40-01.32S 177-49.10E g
	ZHNG03RR			
0125	130305	COPS	ston core 56 on deck	40-01.32S 177-49.10E g
	ZHNG03RR			
0140	140305	COXXX	lticore 61 deployed	37-25.34S 177-00.14E g
	ZHNG03RR			
0225	140305	COXX	lticore 61 at 650m E	37-25.34S 177-00.14E g
	ZHNG03RR			
0310	140305	COXX	lticore 61 on deck E	37-25.34S 177-00.14E g
	ZHNG03RR			
0338	140305	COXX	lticore 63 deployed	37-25.34S 177-00.14E g
	ZHNG03RR			
0422	140305	COXX	lticore 63 at 651m M	37-25.34S 177-00.14E g
	ZHNG03RR			
0411	140305	COXX	lticore 63 aboard MS	37-25.34S 177-00.14E g
	ZHNG03RR			
0648	140305	COPS	ston core 64 deploye	37-25.34S 177-00.14E g
	ZHNG03RR			
0717	140305	COPS	ston core 64 at 631m	37-25.34S 177-00.14E g
	ZHNG03RR			
0819	140305	COPS	ston core 64 on deck	37-25.34S 177-00.14E g
	ZHNG03RR			
1215	140305	COXX	lticore 65 deployed	37-09.64S 177-06.35E g
	ZHNG03RR			
1320	140305	COXX	lticore 65 at 1896m	37-09.64S 177-06.35E g
	ZHNG03RR			
1425	140305	COXX	lticore 65 on deck E	37-09.64S 177-06.36E g
	ZHNG03RR			
1544	140305	COPS	ston core 67 away MS	37-09.64S 177-06.35E g
	ZHNG03RR			
1638	140305	COPS	ston core 67 at 1859	37-09.64S 177-06.35E g
	ZHNG03RR			
1804	140305	COPS	ston core 67 aboard	37-09.64S 177-06.35E g
	ZHNG03RR			
2113	140305	COXX	lticore 68 deployed	37-04.38S 177-09.43E g
	ZHNG03RR			
2218	140305	COXX	lticore 68 at 2008m	37-04.39S 177-09.43E g
	ZHNG03RR			

2327 140305	COXX	lticore 68 on deck A	37-04.38S 177-09.43E g
ZHNG03RR			
0000 150305	COXX	lticore 70 deployed	37-04.39S 177-09.43E g
ZHNG03RR			
0100 150305	COXX	lticore 70 at 2000m	37-04.39S 177-09.43E g
ZHNG03RR			
0200 150305	COXX	lticore 70 on deck E	37-04.39S 177-09.43E g
ZHNG03RR			
0255 150305	COPS	ston core 71 deploye	37-04.39S 177-09.43E g
ZHNG03RR			
0353 150305	COPS	ston Core 71 at 1985	37-04.39S 177-09.43E g
ZHNG03RR			
0724 150305	COPS	ston Core 71 aboard	37-04.39S 177-09.50E g
ZHNG03RR			
1118 150305	COXX	lticore 72 deployed	37-04.89S 176-45.00E g
ZHNG03RR			
1201 150305	COXX	lticore 72 at 1007 E	37-04.89S 176-45.00E g
ZHNG03RR			
1250 150305	COXX	lticore 72 on deck E	37-04.89S 176-45.00E g
ZHNG03RR			
1435 150305	COXX	lticore 74 deployed	37-04.89S 176-45.00E g
ZHNG03RR			
1523 150305	COXX	lticore 74 at 1800m	37-04.89S 176-45.00E g
ZHNG03RR			
1559 150305	COXX	lticore 74 aboard MS	37-04.89S 176-45.00E g
ZHNG03RR			
1731 150305	COPS	ston core 75 deploye	37-04.70S 176-44.68E g
ZHNG03RR			
1758 150305	COPS	ston core 75 at 1039	37-04.58S 176-44.48E g
ZHNG03RR			
1918 150305	COPS	ston core 75 aboard	37-04.23S 176-43.99E g
ZHNG03RR			
2342 150305	COXX	lticore 76 deployed	36-57.33S 176-35.51E g
ZHNG03RR			
0030 160305	COXX	lticore 76 at 1158m	36-57.53S 176-35.57E g
ZHNG03RR			
0100 160305	COXX	lticore 76 on deck E	36-57.45S 176-35.60E g
ZHNG03RR			
0140 160305	COXX	lti core 78 deployed	36-57.52S 176-35.57E g
ZHNG03RR			
0224 160305	COXX	lticore 78 at 1160m	36-57.51S 176-35.57E g
ZHNG03RR			
0259 160305	COXX	lticore 78 on deck E	36-57.52S 176-35.57E g
ZHNG03RR			
0409 160305	COPS	ston core 79 deploye	36-57.51S 176-35.57E g
ZHNG03RR			
0439 160305	COPS	ston core 79 at 1156	36-57.52S 176-35.57E g
ZHNG03RR			
0558 160305	COPS	ston Core 79 aboard	36-57.51S 176-35.57E g
ZHNG03RR			
0938 160305	COXX	lticore 80 deployed	36-44.23S 176-38.29E g
ZHNG03RR			
1030 160305	COXX	lticore 80 on 1630m	36-44.23S 176-38.29E g
ZHNG03RR			

1122	160305	COXX	lticore 80 on deck A	36-44.16S	176-38.33E	g
ZHNG03RR						
1200	160305	COXX	lticore 82 deployed	36-44.23S	176-38.41E	g
ZHNG03RR						
1300	160305	COXX	lticore 82 at 1600m	36-44.25S	176-38.39E	g
ZHNG03RR						
1345	160305	COXX	lticore 82 on deck E	36-44.01S	176-38.47E	g
ZHNG03RR						
1604	160305	COPS	ston Core 83 at 1605	36-44.25S	176-38.38E	g
ZHNG03RR						
1721	160305	COPS	ston Core 83 aboard	36-44.01S	176-38.43E	g
ZHNG03RR						
2140	160305	COXX	lticore 84 deployed	37-15.76S	176-39.80E	g
ZHNG03RR						
2214	160305	COXX	lticore 84 at 669m A	37-15.74S	176-39.84E	g
ZHNG03RR						
2240	160305	COXX	lticore 84 on deck A	37-15.64S	176-39.86E	g
ZHNG03RR						
2302	160305	COXX	lticore 86 deployed	37-15.61S	176-40.03E	g
ZHNG03RR						
2331	160305	COXX	lticore 86 at 674m A	37-15.48S	176-40.06E	g
ZHNG03RR						
0006	170305	COXX	lticore 86 on deck E	37-15.59S	176-40.00E	g
ZHNG03RR						
0100	170305	COPS	ston core 87 deploye	37-15.85S	176-39.82E	g
ZHNG03RR						
0135	170305	COPS	ston core 87 at 650m	37-15.81S	176-40.01E	g
ZHNG03RR						
0230	170305	COPS	ston core 87 on deck	37-15.50S	176-40.08E	g
ZHNG03RR						
1340	170305	COXX	lticore 88 deployed	36-56.94S	177-09.34E	g
ZHNG03RR						
1455	170305	COXX	lticore 88 at 2200m	36-56.94S	177-09.34E	g
ZHNG03RR						
1554	170305	COXX	lticore 88 on deck E	36-56.92S	177-09.35E	g
ZHNG03RR						
1618	170305	COXX	lticore 90 deployed	36-56.85S	177-09.38E	g
ZHNG03RR						
1725	170305	COXX	lticore 90 at 2196m	36-56.85S	177-09.33E	g
ZHNG03RR						
1835	170305	COXX	lticore 90 aboard MS	36-56.85S	177-09.33E	g
ZHNG03RR						
2124	170305	COPS	ston core 91 deploye	36-56.85S	177-09.33E	g
ZHNG03RR						
2218	170305	COPS	ston core 91 at 2167	36-56.85S	177-09.33E	g
ZHNG03RR						
0000	180305	COPS	ston core 91 on deck	36-56.85S	177-09.33E	g
ZHNG03RR						
0736	180305	COXX	lticore #92 deployed	36-57.87S	177-26.40E	g
ZHNG03RR						
0830	180305	COXX	lticore 92 at 1807m	36-57.87S	177-26.40E	g
ZHNG03RR						
0928	180305	COXX	lticore 92 on deck A	36-57.87S	177-26.40E	g
ZHNG03RR						

0944	180305	COXX	lticore 94 deployed	36-57.87S	177-26.40E	g
ZHNG03RR						
1039	180305	COXX	lticore 94 at 1810m	36-57.87S	177-26.40E	g
ZHNG03RR						
1136	180305	COXX	lticore 94 on deck A	36-57.87S	177-26.40E	g
ZHNG03RR						
1250	180305	COPS	ston core 95 deploye	36-57.87S	177-26.40E	g
ZHNG03RR						
1350	180305	COPS	ston core 95 at 1800	36-57.87S	177-26.40E	g
ZHNG03RR						
1536	180305	COPS	ston core on deck EW	36-57.88S	177-26.42E	g
ZHNG03RR						
1727	180305	COXX	lticore 96 deployed	36-59.00S	177-29.61E	g
ZHNG03RR						
1820	180305	COXX	lticore 96 at 1589m	36-58.97S	177-29.65E	g
ZHNG03RR						
1912	180305	COXX	lticore 96 aboard MS	36-58.93S	177-29.68E	g
ZHNG03RR						
2321	180305	COPS	ston core 98 deploye	36-58.85S	177-28.97E	g
ZHNG03RR						
0000	190305	COPS	ston core 98 at 1650	36-58.85S	177-28.96E	g
ZHNG03RR						
0125	190305	COPS	ston core 98 on deck	36-58.85S	177-28.97E	g
ZHNG03RR						
0230	190305	COXX	lticore 99 deployed	36-58.85S	177-28.97E	g
ZHNG03RR						
0330	190305	COXX	lticore 99 at 1660m	36-58.85S	177-28.97E	g
ZHNG03RR						
0422	190305	COXX	lticore 99 aboard MS	36-58.85S	177-28.97E	g
ZHNG03RR						
0612	190305	COXX	lticore 100 deployed	36-52.00S	177-21.00E	g
ZHNG03RR						
0816	190305	COXX	lticore 100 on deck	36-52.00S	177-21.00E	g
ZHNG03RR						
0831	190305	COXX	lticore 102 deployed	36-52.00S	177-21.00E	g
ZHNG03RR						
0932	190305	COXX	lticore 102 at 2054m	36-52.00S	177-21.00E	g
ZHNG03RR						
1032	190305	COXX	lticore 102 on deck	36-52.00S	177-21.00E	g
ZHNG03RR						
1137	190305	COPS	ston core 103 deploy	36-52.00S	177-21.00E	g
ZHNG03RR						
0435	200305	COXX	lticore 104 deployed	36-44.00S	177-35.05E	g
ZHNG03RR						
0533	200305	COXX	lticore 104 at 2475m	36-44.00S	177-35.05E	g
ZHNG03RR						
0700	200305	COXX	lticore 104 complete	36-44.00S	177-35.05E	g
ZHNG03RR						
0716	200305	COXX	lticore 106 deployed	36-44.00S	177-35.05E	g
ZHNG03RR						
0829	200305	COXX	lticore 106 at 2475m	36-44.00S	177-35.05E	g
ZHNG03RR						
0943	200305	COXX	lticore 106 on deck	36-44.00S	177-35.05E	g
ZHNG03RR						

1055	200305	COPS	ston core 107 deploy	36-44.00S 177-35.05E g
	ZHNG03RR			
1200	200305	COPS	stom core at 2440m E	36-44.00S 177-35.05E g
	ZHNG03RR			
1345	200305	COPS	ston core 107 on dec	36-44.00S 177-35.05E g
	ZHNG03RR			
1737	200305	COXX	lticore 108 deployed	36-44.81S 177-17.85E g
	ZHNG03RR			
1833	200305	COXX	lticore 108 at 1882m	36-44.81S 177-17.85E g
	ZHNG03RR			
1936	200305	COXX	lticore 108 aboard M	36-44.81S 177-17.85E g
	ZHNG03RR			
2018	200305	COXX	lticore 110 deployed	36-44.81S 177-17.85E g
	ZHNG03RR			
2113	200305	COXX	lticore 110 at 1882m	36-44.81S 177-17.85E g
	ZHNG03RR			
2213	200305	COXX	lticore 110 on deck	36-44.81S 177-17.85E g
	ZHNG03RR			
0030	210305	COPS	ston core 111 deploy	36-44.81S 177-17.85E g
	ZHNG03RR			
0115	210305	COPS	ston core 111 at 185	36-44.81S 177-17.85E g
	ZHNG03RR			
0239	210305	COPS	ston core 111 on dec	36-44.81S 177-17.85E g
	ZHNG03RR			
0500	210305	PHNP	ankton Net 113 deplo	36-40.02S 177-10.03E g
	ZHNG03RR			
0518	210305	PHNP	ankton Net 113 aboar	36-40.02S 177-10.03E g
	ZHNG03RR			
1714	210305	COXX	lticore 114 deployed	36-23.50S 177-19.00E g
	ZHNG03RR			
1849	210305	COXX	lticore 114 at 3300m	36-23.50S 177-19.00E g
	ZHNG03RR			
2026	210305	COXX	lticore 114 on deck	36-23.50S 177-19.00E g
	ZHNG03RR			
2058	210305	COXX	lticore 116 deployed	36-23.50S 177-19.00E g
	ZHNG03RR			
2230	210305	COXX	lticore 116 at 3299m	36-23.50S 177-19.00E g
	ZHNG03RR			
0010	220305	COXX	lti core 116 on deck	36-23.50S 177-19.00E g
	ZHNG03RR			
0130	220305	COPS	ston core 117 deploy	36-23.50S 177-19.00E g
	ZHNG03RR			
0300	220305	COPS	ston core 117 at 327	36-23.50S 177-19.00E g
	ZHNG03RR			
0449	220305	COPS	ston Core 117 aboard	36-23.50S 177-19.00E g
	ZHNG03RR			
0811	220305	COXX	lticore 118 deployed	36-22.61S 177-26.77E g
	ZHNG03RR			
0917	220305	COXX	lticore 118 at 2261m	36-22.63S 177-26.75E g
	ZHNG03RR			
1023	220305	COXX	lticore 118 on deck	36-22.63S 177-26.75E g
	ZHNG03RR			
1040	220305	COXX	lticore 120 deployed	36-22.63S 177-26.75E g
	ZHNG03RR			

1200	220305	COXX	lticore 120 at 2260m	36-22.63S	177-26.75E	g
	ZHNG03RR					
1257	220305	COXX	lticore 120 on deck	36-22.63S	177-26.75E	g
	ZHNG03RR					
1503	220305	COPS	ston core 121 deploy	36-22.63S	177-26.76E	g
	ZHNG03RR					
1617	220305	COPS	ston Core 121 at 222	36-22.63S	177-26.75E	g
	ZHNG03RR					
1754	220305	COPS	ston Core 121 aboard	36-22.63S	177-26.75E	g
	ZHNG03RR					
0300	230305	COXX	lticore 122 deployed	36-11.91S	176-53.35E	g
	ZHNG03RR					
0415	230305	COXX	lticore 122 at 2567m	36-11.91S	176-53.35E	g
	ZHNG03RR					
0538	230305	COXX	lticore 122 aboard M	36-11.91S	176-53.35E	g
	ZHNG03RR					
0555	230305	COXX	lticore 124 deployed	36-11.91S	176-53.35E	g
	ZHNG03RR					
0710	230305	COXX	lticore 124 at 2540m	36-11.91S	176-53.35E	g
	ZHNG03RR					
0825	230305	COXX	lticore 124 on deck	36-11.91S	176-53.35E	g
	ZHNG03RR					
0941	230305	COPS	ston core 125 deploy	36-11.91S	176-53.35E	g
	ZHNG03RR					
1047	230305	COPS	ston core 125 at 251	36-11.91S	176-53.35E	g
	ZHNG03RR					
1200	230305	COPS	stom core 125 off bo	36-11.87S	176-53.33E	g
	ZHNG03RR					
1345	230305	COPS	ston core 125 on dec	36-11.87S	176-53.32E	g
	ZHNG03RR					
0025	240305	COXX	lticore 128 deployed	36-35.41S	176-41.55E	g
	ZHNG03RR					
0120	240305	COXX	lticore 128 at 1696m	36-35.41S	176-41.55E	g
	ZHNG03RR					
0214	240305	COXX	lticore 128 on deck	36-35.41S	176-41.55E	g
	ZHNG03RR					
0230	240305	COXX	lticore 130 deployed	36-35.45S	176-41.52E	g
	ZHNG03RR					
0326	240305	COXX	lticore 130 at 1695m	36-35.41S	176-41.55E	g
	ZHNG03RR					
0422	240305	COXX	lticore 130 aboard M	36-35.41S	176-41.55E	g
	ZHNG03RR					
0557	240305	COPS	ston Core 131 deploy	36-35.44S	176-41.63E	g
	ZHNG03RR					
0640	240305	COPS	ston Core 131 at 167	36-35.41S	176-41.55E	g
	ZHNG03RR					
0748	240305	COPS	ston core 131 on dec	36-35.41S	176-41.55E	g
	ZHNG03RR					
1117	240305	COPS	ston core 132 deploy	36-24.01S	176-34.07E	g
	ZHNG03RR					
1200	240305	COPS	ston core 132 at 140	36-24.00S	176-34.00E	g
	ZHNG03RR					
1320	240305	COPS	ston core 132 on dec	36-24.00S	176-33.99E	g
	ZHNG03RR					

1420	240305	COXX	lticore 133 deployed	36-24.00S 176-34.01E	g
	ZHNG03RR				
1520	240305	COXX	lticore 133 at 1388m	36-24.00S 176-34.01E	g
	ZHNG03RR				
1608	240305	COXX	lticore 133 aboard M	36-24.00S 176-34.02E	g
	ZHNG03RR				
1624	240305	COXX	lticore 135 deployed	36-24.00S 176-33.99E	g
	ZHNG03RR				
1706	240305	COXX	lticore 135 at 1389m	36-24.00S 176-34.00E	g
	ZHNG03RR				
1756	240305	COXX	lticore 135 aboard M	36-24.00S 176-34.03E	g
	ZHNG03RR				

*** Hydrocasts ***

0933	280205	HCGF	drocast 2 deployed A	45-49.77S 178-21.51W	g
	ZHNG03RR				
0938	280205	HCGF	drocast 2 on deck AA	45-49.76S 178-21.52W	g
	ZHNG03RR				
1444	020305	HCGF	drocast 8 deployed	45-12.02S 179-38.95W	g
	ZHNG03RR				
1452	020305	HCGF	drocast 8 complete M	45-12.02S 178-38.95W	g
	ZHNG03RR				
0114	040305	HCGF	drocast 15 deployed	43-45.40S 179-19.91W	g
	ZHNG03RR				
0122	040305	HCGF	drocast 15 on deck E	43-45.48S 179-19.94W	g
	ZHNG03RR				
0912	040305	HCGF	drocast 17 deployed	42-43.02S 178-01.97W	g
	ZHNG03RR				
0919	040305	HCGF	drocast 17 on deck A	42-43.02S 178-01.98W	g
	ZHNG03RR				
0815	050305	HCGF	drocast 23 deployed	42-04.47S 177-37.57W	g
	ZHNG03RR				
0820	050305	HCGF	drocast 23 on deck A	42-04.47S 177-37.57W	g
	ZHNG03RR				
1130	070305	HCGF	drocast 34 deployed	40-09.92S 176-08.06W	g
	ZHNG03RR				
1135	070305	HCGF	drocast 34 on deck E	40-09.92S 176-08.06W	g
	ZHNG03RR				
1624	060305	HCNI	skin 30 deployed MS	41-09.99S 176-47.92W	g
	ZHNG03RR				
1637	060305	HCNI	skin 30 aboard MS	41-10.00S 176-47.89W	g
	ZHNG03RR				
0440	210305	HCNI	skin 112 deployed MS	36-40.02S 177-10.03E	g
	ZHNG03RR				
0452	210305	HCNI	skin 112 aboard MS	36-40.02S 177-10.03E	g
	ZHNG03RR				
1517	230305	HCNI	skin cast 126 deploy	36-12.49S 176-53.04E	g
	ZHNG03RR				
1525	230305	HCNI	skin cast 126 on dec	36-12.49S 176-53.04E	g
	ZHNG03RR				

#*** Bucket Samples ***

2315	040305	BKST	ducted Bucket cast	42-27.72S	177-50.16W	g
ZHNG03RR						
0456	100305	BKST	cket cast 43 MS	39-59.65S	178-49.35W	g
ZHNG03RR						
2145	100305	BKST	cket sample 46 AA	40-01.90S	179-59.78E	g
ZHNG03RR						
0246	120305	BKST	cket cast 50 MS	40-22.66S	177-59.72E	g
ZHNG03RR						
1946	120305	BKST	cket sample 54 AA	40-01.33S	177-49.17E	g
ZHNG03RR						
0312	140305	BKST	cket 62 delployed EW	37-25.34S	177-00.14E	g
ZHNG03RR						
0316	140305	BKST	cket 62 on deck EW	37-25.34S	177-00.14E	g
ZHNG03RR						
1429	140305	BKST	cket 66 conducted EW	37-09.64S	177-06.35E	g
ZHNG03RR						
2331	140305	BKST	cket sample 69 AA	37-04.39S	177-09.43E	g
ZHNG03RR						
1255	150305	BKST	cket cast 73 deploye	37-04.89S	176-45.00E	g
ZHNG03RR						
0106	160305	BKST	cket cast 77 deploye	36-57.46S	176-35.59E	g
ZHNG03RR						
1125	160305	BKST	cket sample 81 AA	36-44.15S	176-38.36E	g
ZHNG03RR						
2242	160305	BKST	cket sample 85 AA	37-15.62S	176-39.86E	g
ZHNG03RR						
1557	170305	BKST	cket cast 89 MS	36-56.92S	177-09.35E	g
ZHNG03RR						
0929	180305	BKST	cket sample 93 AA	36-57.87S	177-26.40E	g
ZHNG03RR						
1917	180305	BKST	cket Sample 97 MS	36-58.94S	177-29.66E	g
ZHNG03RR						
0818	190305	BKST	cket sample 101 AA	36-52.00S	177-21.00E	g
ZHNG03RR						
0705	200305	BKST	cket Cast 105 MS	36-44.00S	177-35.05E	g
ZHNG03RR						
1939	200305	BKST	cket Cast 109 MS	36-44.81S	177-17.85E	g
ZHNG03RR						
2030	210305	BKST	cket sample 115 AA	36-23.50S	177-19.00E	g
ZHNG03RR						
1026	220305	BKST	cket sample 119 AA	36-22.63S	177-26.75E	g
ZHNG03RR						
0542	230305	BKST	cket Sample 123 MS	36-11.91S	176-53.35E	g
ZHNG03RR						
0215	240305	BKST	cket cast 129 conduc	36-35.41S	176-41.55E	g
ZHNG03RR						
1616	240305	BKST	cket Sample 134 MS	36-24.00S	176-34.00E	g
ZHNG03RR						

Net Tows ***

1028	280205	ONVT	t tow 3 deployed AA	45-49.70S 178-21.41W	g
	ZHNG03RR				
1038	280205	ONVT	t tow 3 on deck AA	45-49.70S 178-21.42W	g
	ZHNG03RR				
1455	020305	ONVT	t Tow 9 deployed MS	45-12.01S 179-38.96W	g
	ZHNG03RR				
1515	020305	ONVT	t Tow 9 aboard MS	45-12.01S 179-38.96W	g
	ZHNG03RR				
0135	040305	ONVT	t tow 16 deployed EW	43-45.52S 179-19.93W	g
	ZHNG03RR				
0145	040305	ONVT	t tow 16 on deck EW	43-45.64S 179-19.85W	g
	ZHNG03RR				
0932	040305	ONVT	t tow 18 deployed AA	42-43.02S 178-01.98W	g
	ZHNG03RR				
0948	040305	ONVT	t tow 18 on deck AA	42-43.02S 178-01.97W	g
	ZHNG03RR				
0829	050305	ONVT	t tow 24 deployed AA	42-04.47S 177-37.57W	g
	ZHNG03RR				
0838	050305	ONVT	t tow 24 on deck AA	42-04.47S 177-37.57W	g
	ZHNG03RR				
1150	070305	ONVT	ttow 35 deployed EW	40-09.92S 176-08.05W	g
	ZHNG03RR				
1150	070305	ONVT	ttow 35 on deck EW	40-09.92S 176-08.05W	g
	ZHNG03RR				
0812	130305	ONVT	t tow 58 deployed AA	38-59.95S 178-24.25E	g
	ZHNG03RR				
0829	130305	ONVT	t tow 58 on deck AA	38-59.96S 178-24.25E	g
	ZHNG03RR				
1355	130305	ONVT	t tow deployed 59 EW	37-59.84S 178-46.84E	g
	ZHNG03RR				
1414	130305	ONVT	t tow 59 on deck EW	37-59.82S 178-46.78E	g
	ZHNG03RR				
1531	230305	ONVT	t tow 127 deployed E	36-12.49S 176-53.04E	g
	ZHNG03RR				
1552	230305	ONVT	t tow 127 aboard MS	36-12.49S 176-53.04E	g
	ZHNG03RR				
1150	070305	ONVT	ttow 35 deployed EW	40-09.92S 176-08.05W	g
	ZHNG03RR				
1150	070305	ONVT	ttow 35 on deck EW	40-09.92S 176-08.05W	g
	ZHNG03RR				

*** Plankton Nets ***

0500	210305	PHNP	ankton Net 113 deplo	36-40.02S 177-10.03E	g
	ZHNG03RR				
0518	210305	PHNP	ankton Net 113 aboar	36-40.02S 177-10.03E	g
	ZHNG03RR				

*** Expendable Bathythermographs ***

1943	260205	BTXP	bathythermographs 1-25	43-56.93S 177-36.43E	g
------	--------	------	------------------------	----------------------	---

ZHNG03RR

End Sample Index

ZHNG03RR