

ANTIPODE EXPEDITION
LEG 06

Chief Scientist: R. L. Fisher (SIO)
Ports: Pt. Louis to Pt. Louis, Mauritius
Dates: 26 October - 24 November 1970
Ship: R/V Melville

TOTAL MILEAGE OF UNDERWAY DATA COLLECTED

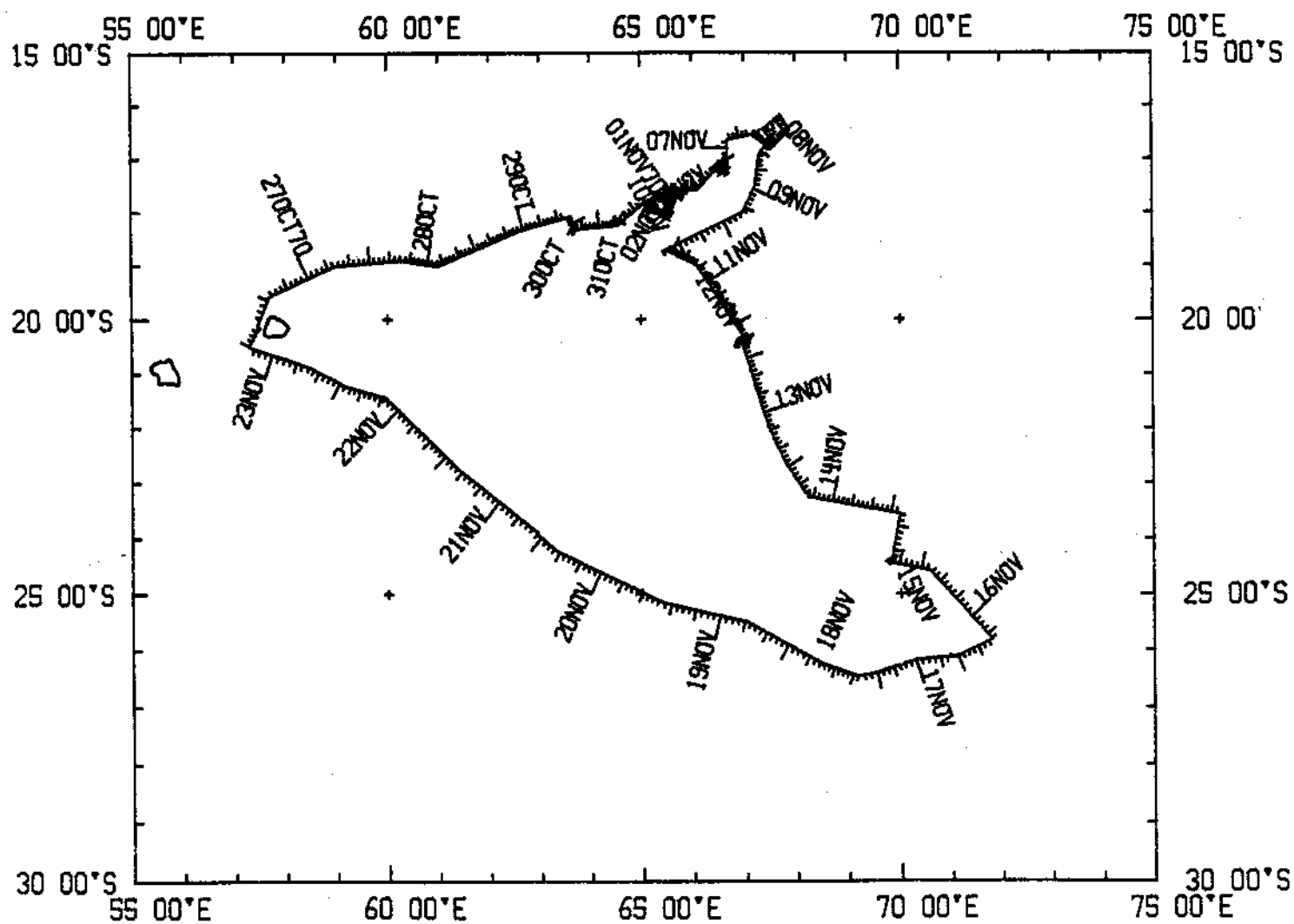
- 1) Cruise - 3130 miles
- 2) Bathymetry - 3036 miles
- 3) Magnetics - 2830 miles

CRUISE ID	COMMENT	G.M.T.		LOCAL		TIME ZONE
		DATE	TIME	DATE	TIME	
		DD/MM/YY	HHMM	DD/MM/YY	HHMM	
ANTP06MV	BEGIN	26/10/70	0836 Z			
	END	23/11/70	0748 Z			

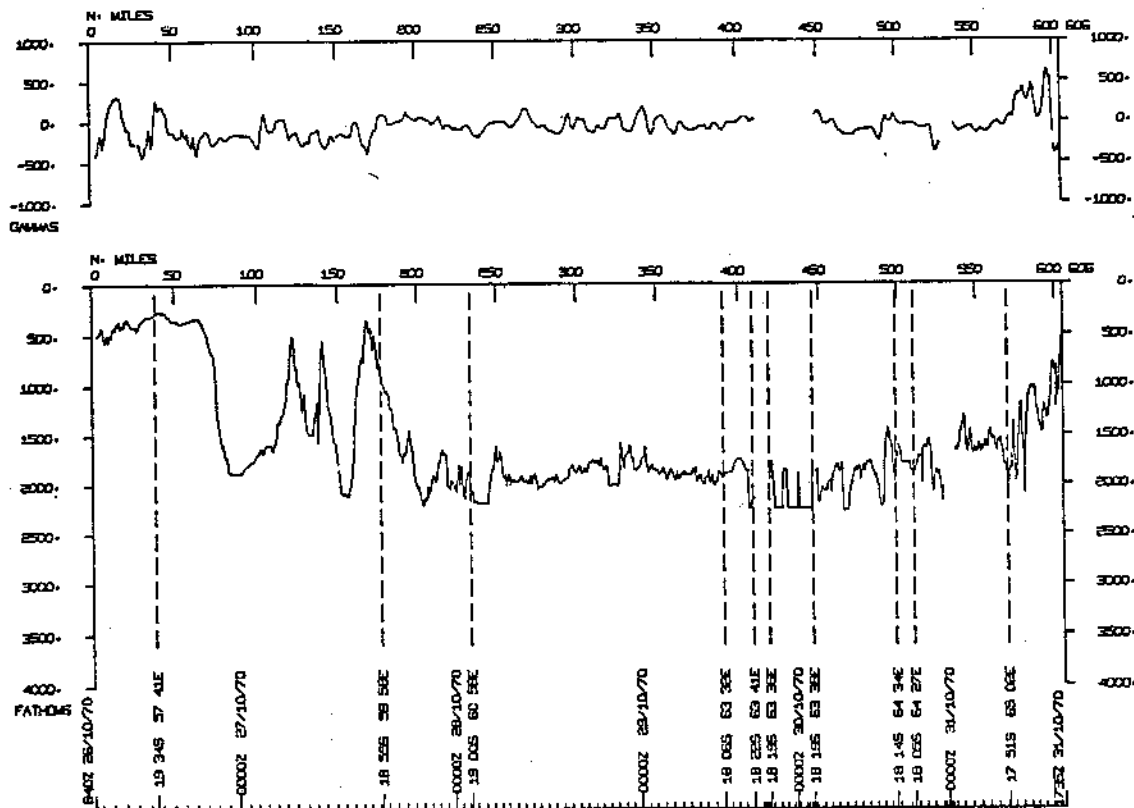
LISTING OF MGD77 EXCHANGE FORMAT HEADER:

1ANTP06MVMGD77	102955133810618	SCRIPPS INSTITUTION OF OCEANOGRAPHY	01
USA	R/V MELVILLE	1SHIP FISHER R.L.	02
ANTIPODE LEG 6			03
701026PT.LOUIS,MAURITIUS		701124PT.LOUIS,MAURITIUS	04
SATNAV,AUTOLOG GYRO + EMLOG		LINEAR INTERP.BETWEEN ADJACENT FIXES	05
3.5KHZ/GIFFT RECORDER/WIDE BEAM		ANALOGUE RECORDS,PUNCHED CARDS	06
VARIAN MFD PROTON PRECESSION MOD 4970		ANAL.RECORDS,CARDS	07
			08
40CU.IN.AIRGUN,10-300HZ,PDR MK 10 REC.		ANAL.RECORDS,35MM MICROFILM	09
A(I1,A8,F5.2,4I2,F5.3,F8.5,F9.5,I1,F6.4,F6.1,I2,I1,3F6.1,I1,F5.1,F6.0,F7.1,			10
F6.1,F5.1,A8,4I1)			11
0501SECONDSWEEP14630005 MINUTE INTERVAL			12
0500699999999999999903IGRF 1965		LIN.INTERP.AT 30DEG C/C OR 500MI ALONG TRACK	13
			14
			15
			16
			17
			18
			19
			20
			21
			22
			23
			24

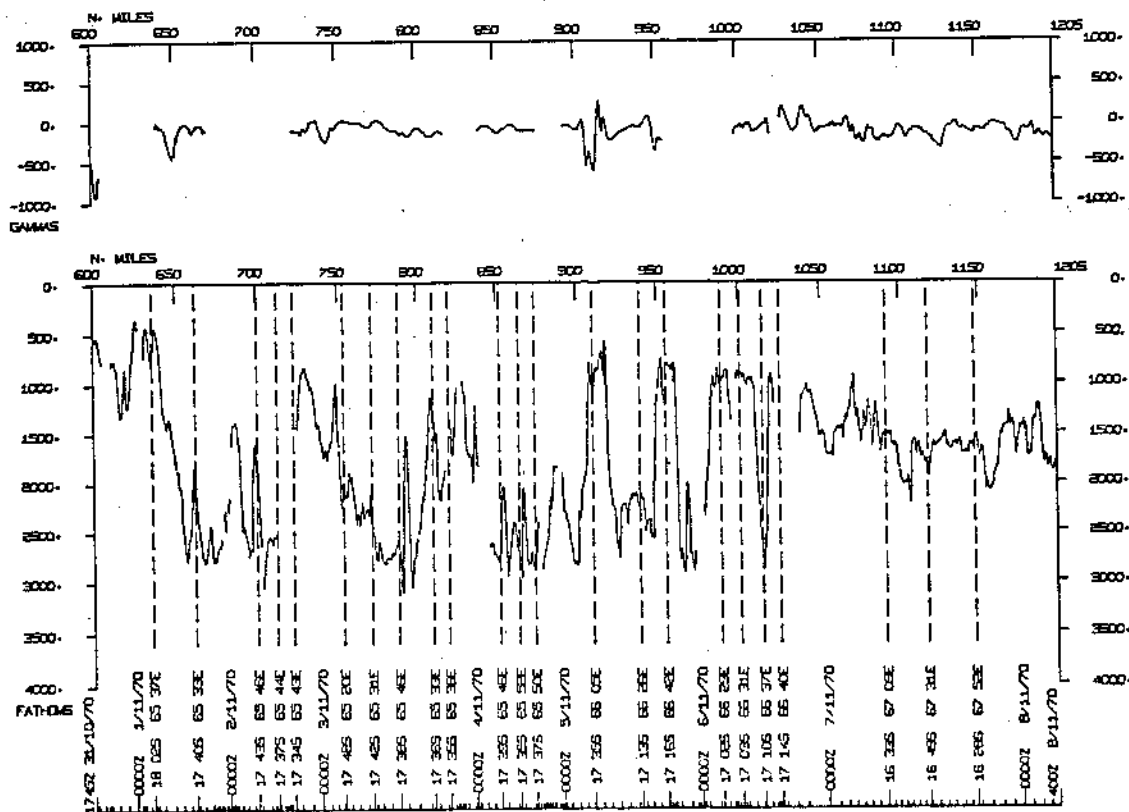
ANTPO6MV



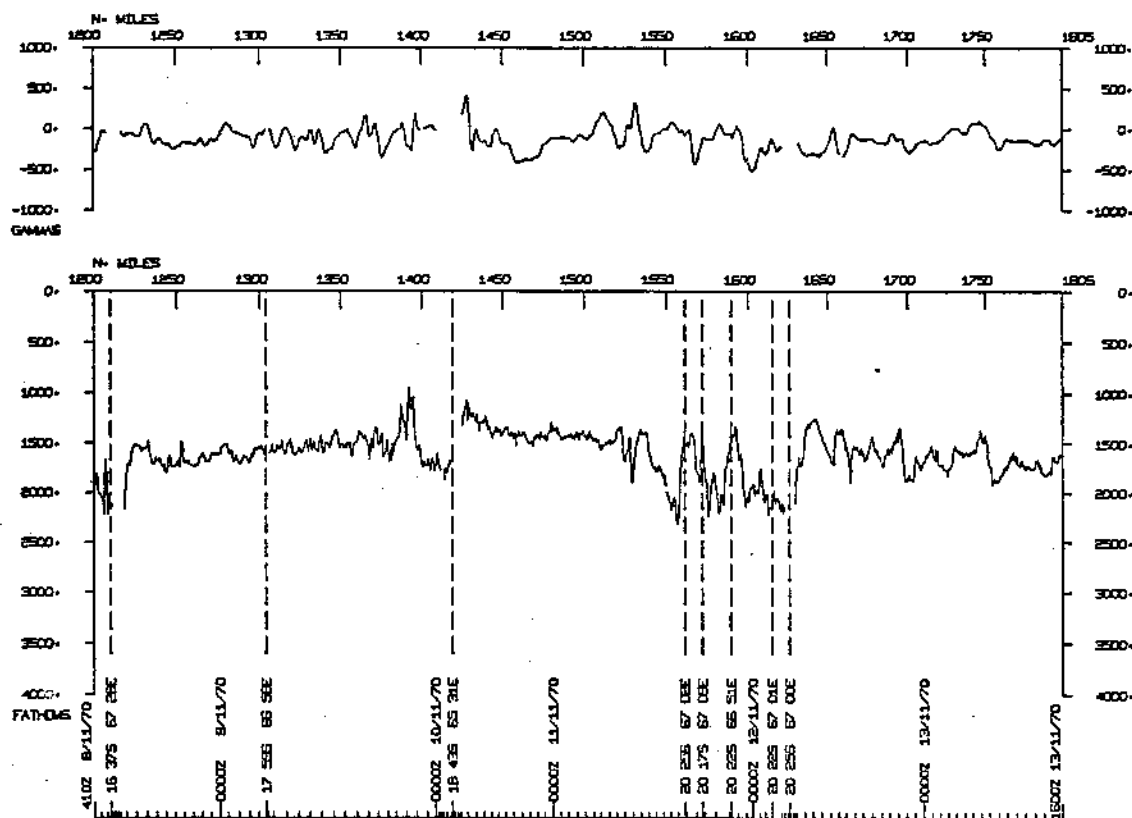
ANTPO6MW



ANTPO6MW



ANTPOBMV



ANTPOBMV

