

National Archives & Public Records Services  
of Papua New Guinea

# PATROL REPORTS

District : Western  
Station : Balimo  
Volume : 12  
ISBN NO : 9980-910-79 -8  
Accession NO : 496  
Period : 1967-1968

Filmed by/for the National Archives of Papua New Guinea  
Port Moresby 1995

*Sole Custodian: National Archives of Papua New Guinea*

# Papua New Guinea Patrol Reports

Digitized version made available by



**Copyright:** Government of Papua New Guinea. This digital version made under a license granted by the National Archives and Public Records Services of Papua New Guinea.

**Use:** This digital copy of the work is intended to support research, teaching, and private study.

**Constraints:** This work is protected by the U.S. Copyright Law (Title 17, U.S.C.) and the laws of Papua New Guinea. Use of this work beyond that allowed by "fair use" requires written permission of the National Archives of Papua New Guinea. Responsibility for obtaining permissions and any use and distribution of this work rests exclusively with the user and not the UC San Diego Library.

**Note on digitized version:** A microfiche copy of these reports is held at the University of California, San Diego (Mandeville Special Collections Library, MSS 0215). The digitized version presented here reflects the quality and contents of the microfiche. Problems which have been identified include misfiled reports, out-of-order pages, illegible text; these problems have been rectified whenever possible. The original reports are in the National Archives of Papua New Guinea (Accession no. 496).



WESTERN DISTRICT PATROL REPORTS

1967-1968

BALIMO, EMETI

<u>Report No.</u>	<u>Officer Conducting Patrol</u>	<u>Area Patrolled</u>
<u>BALIMO</u>		
1-67-68	R. B. PHILLIPS	EAST & WEST GOGODALA C/D
5-67-68	G. Bowama	East & West Gogodala C.E.
7-67-68	R. J. Staples	Gogodala West C.D.
<u>EMETI</u>		
2-67-68	E. P. C. Johnston	Upper & Lower Hamu, Gama & Waiwoi Rivers

FRONTIER



Station: Balimo.  
Sub-District: Balimo  
District: Western  
Patrol No.: 5/1967-68.  
Patrol Conducted by: R.B. Phillips P.O.  
Area Patrolled: East, West Cogodala,  
Gorua Divisions.  
Personnel Accompanying: Teacher Onca Lekker,  
T/Assistant Field Officer, George Bowane.  
Police: Constable Beti Titi Reg No. 0707.  
Interpreter: Albert Kapini.  
Duration: From 16/2/68 to 6/3/68.  
Last Patrol to this Area: 1967.  
Object of the Patrol: To poll certain  
villages in the area for P.P.N.G.  
House of Assembly Election.  
Map Reference: Kivai, 1:250,000,  
Awarra River 1:250,000.

\*\*\*\*\*

67. 3. 2 10



TERRITORY OF PAPUA AND NEW GUINEA

Telegrams 67-3-1  
Ref  
If calling for RAC.MEP  
Mr.



Department of District Administration,  
Western District,  
DARU.

23rd October, 1967.

The Director,  
Department of District Administration,  
KORORUA.

BALIMO Patrol Report 1/67-68

.....  
Please find the above report submitted by  
Mr. R. B. PHILLIPS, Patrol Officer. Reports Nos 2 and 3/67-68  
have already been submitted.

2. I agree with the points made by Mr. EDWARDS in  
his covering memo. Nothing will be gained by glossing over  
the fact that the area patrolled is depressed and depressing  
and of little economic potential. This is reflected in the  
attitude of the Councillors who get frustrated in their  
attempts, such as they are, to prod the people into activity.  
Our staff levels preclude any meaningful improvement in the  
present level of Education, Co-operatives and Public Works,  
and even in Local Government we are finding difficulty in maintaining  
present levels of assistance.

3. For your information, please.

*I.A. Holmes*  
(I.A. Holmes)  
ACTING DISTRICT COMMISSIONER

67-3-1

Department of District Administration,  
Western District,  
BALIMO.

10th October, 1967.

The District Commissioner,  
Western District,  
DARU.

BALIMO PATROL REPORT NO. 1/68-68

Officer Conducting: R.R. PHILLIPS, Patrol Officer

The above report together with census figures and Camping Allowance claim is attached. A supply of Patrol Report jackets is not held at this Office.

2. The revised census figures for DEWARA, TIRIO, BARAMURA and LEWADA villages have yet to be compiled. Refer to comments under the heading "Introduction".
3. Delay in submitting this report was largely due to the broken periods of conduct of the patrol. Mr. Phillips was, however, requested on quite a number of occasions to expedite presentation of this report.
4. The report is brief, factual, and well presented. You may wish to comment on the Diary entry for 23.6.67. The Census Sheets for this area have been poorly kept and some work remains to be done to straighten out our Registers. Mr. Phillips should have elaborated on the settlement of the 'Madiri Dispute'.
5. As stated, the GOGODALA Local Government Council is largely ineffective. The Council Administrative Adviser has been asked to investigate land ownership for four parcels of land on which the Council has erected Aid Posts of a type.
6. The prevailing situation in the North BankxFly area is as expected and will not improve until better communications are evolved. Increased patrolling will assist an improvement but the people are looking for roads, schools, Co-operatives, economic development and fairly continuous contact with Officers supervising such works.
7. Admittedly, the people are lethargic but understandably so. Although the 'key to progress is through self help' enthusiastic interest and guidance must be given by Administration staff in the early stages at least.

*J.A. Edwards*  
(J.A. EDWARDS)

Assistant District Commissioner



INTRODUCTION:

This was a patrol conducted along the Arania River in the Balimo Sub-District for the purpose of polling villages for the 1968 T.P.W.G. House of Assembly-Elections. One unfortunate incident occurred described in the report, was that when the canoe over-turned and the ballot boxes fell into the river. All the villages on the polling schedule were visited and polled accordingly. Some difficulties were experienced with the polling, as the people did not recognize their names. This was also discussed in more greater details in the report. Generally, the patrol went smoothly, and no greater difficulties were encountered.

OBSERVATIONS AND COMMENTS

ELECTIONS

Even though the people did not know very much about the elections, they were given help from the party. The election itself, I would say was really obvious to the people as the party went to each village. Very much experience was seen from the villages near the Balimo Sub-District. Although the people from Ali, Makapa, Mumani, Pikiwa, Sarago do not know the Gogodala language, and that they speak different languages, the poll clerk had too much trouble, so the party had the interpreter from each village standing eight (8) yards from us interpreting for us. As far as the villages stated and concerned they too, did not know much about the elections, how the House of Assembly maintain it's laws and rules, what work is done by the elected candidates. For the voting, we had too many informal votes. Ages and names were of great difficult. Although many of the people were too young to vote, they came and recommend that they voted in their 1964 House of Assembly Elections. As far as the party was concerned, their names were not in the Common Roll, and stated that they attended the 1967 Census Patrol. Great many people went away from their villages in search of food and did not bother about voting. One unfortunate incident as stated in the Introduction was that when travelling from Kini village in the Balimo Sub-District in the Gogodala transporting canoe, the canoe over-turned. All the electoral equipment, the ballot boxes, and the canoe owner fell into the water. Every thing got wet. As ~~far as~~ to the ballot papers, they were marked with the ink, and they were shown clearly.

\*\*\*\*\*



Diary

Friday 16/2/68 Departed Balimo at noon by M.V. Janis B.

Arrived at Awaba late afternoon, unloaded the U.P.M. cargo, departed again for Ali. Slow trip, anchored on the riverside, spent the night on board.

Saturday 17/2/68

Departed, continued up the river to Ali. Arrived late afternoon. Boat anchored beside the Ali passage, aboard the dinghy and left for the village. Polling was too late to commence, so the party returned to the boat and spent the night on board the boat.

Sunday 18/2/68

Departed the boat in the dinghy and arrived at Ali early morning. Voting carried out until late afternoon. For the people, they liked to vote on Sunday. Polling place was at Ali. Returned to the M.V. Janis B. and departed for Makapa. Arrived late in the Makapa passage. Slept on board the M.V. Janis B.

Monday 19/2/68

Departed the M.V. Janis B. for Makapa on the dinghy, arriving late afternoon. Voting carried out until late afternoon. The Mumani villages came and voted at Makapa. Polling place was at Makapa. Returned to the dinghy and departed for the boat, then departed for Pikiwa. Left the Pikiwa passage and went to Awaba. Observed and departed again for Pikiwa. Night spent on board the boat.

Tuesday 20/2/68

Observed. Nothing was done on this day. Arriving at Pici village, where night spent on board the M.V. Janis B.

Wednesday 21/2/68

Departed Pici early morning for Pikiwa. The boat anchored beside the channel to Pikiwa villages. Aboard the dinghy and left for Pikiwa arriving late morning, and began the polling. Voting carried out until late afternoon. The Wasapea villages came and voted at Pikiwa. Departed again for the boat, and left Pici. Arriving late afternoon. Anchored on the passage to Kotale. Departed by dinghy to Kotale. Polling carried out and was at Kotale, until late afternoon, returned to the boat where night spent on board.

Friday 22/2/68

Departed the Kotale passage for Kewa arriving early morning. Anchored at the Kewa passage and departed by dinghy. Polling place was at Kewa. Voting carried out until late afternoon, departed for Uladu lagoon. Slept the night on board the boat in the Uladu lagoon.

Saturday 23/2/68

Departed the mouth of Uladu lagoon for Uladu arriving early morning. Voting carried out until late afternoon. Polling place was at Uladu. Left for Sarego in the dinghy. Voting carried at Sarego, polling place was at Sarego. Returned to the dinghy and departed for Balimo.

BALIMO PATROL NO. 1 OF 1967/68

OFFICER CONDUCTING

Mr. R.B. Phillips P.O.

AREA PATROLLED

East Gogodala & Part West Gogodala Census Divisions.

PERSONNEL ACCOMPANYING

Consts. Balis & Everuba.  
Patrol Interpreter Albert Kepini.  
Soka Gairi (Stores Assistant)

DURATION OF PATROL

15-6-67 to 7-7-67  
18-7-67 to 14-7-67  
13-9-67 to 15-9-67  
Total number of days - 30.

LAST PATROL TO THE AREA

D.D.A. February, 1966.  
D.A.S.F. 1968.  
P.H.D. Unknown.

OBJECTS OF THE PATROL

Common Roll Compilation  
Census Revision  
Local Government Administration  
Routine Administration

MAP REFERENCE

Army maps : Kluai SC 54-4 & Aworra River  
SB 54-16. Scale 1:250,000.

\*\*\*\*\*

Diary con't

Sunday 25/2/68. Observed at Balimo. Slept the night at Balimo. We also spent the Saturday night at Palimo.

Monday 26/2/68 Departed Balimo on the M.V. Janis B for Kala. Arriving late afternoon. Polling carried out at Kala. Polling place was at Kala. Voting carried out until late afternoon. Departed Kala on the dinghy for the M.V. Janis B. Then departed for Mapoda. Spent the night on board the M.V. Janis B.

Tuesday 27/2/68 Voting carried out early morning. Polling place was at Mapoda. Voting carried out until late morning, left for Kebani. Voting carried until late afternoon, departed for Kenewa. Spent the night on board the boat at Kenewa.

Wednesday 28/2/68 Aboard the dinghy for Kenewa, polling place was at Kenewa. Voting carried out until late morning, departed Kenewa for Waa. Voting carried out until late afternoon, departed for Saiwasi. Voting carried out until late afternoon, departed back for Kenewa where night spent on board the M.V. Janis B.

Thursday 29/2/68 Departed Kenewa for Balimo, arriving late afternoon. Spent the night at Balimo.

Friday 1/3/68 As far as Kinama was my village, I was not able to go, instead Babadi Nawasi took my place and acted as a poll clerk.

Saturday 2/3/68 Departed Balimo in the Gogodala transporting canoe for Kini. Arriving late morning, voting carried out until late afternoon, departed for Balimo. On the way, we had an incident which happened. The canoe turned over and the ballot boxes fell into the water.

Sunday 3/3/68 Observed. Spent the night at Balimo.

Monday 4/3/68 Departed Balimo by Land-rover for Tai village. Arrived early morning. Polling place was at Tai. Voting carried out until late afternoon, returned to Balimo, and spent the night at Balimo.

Tuesday 5/3/68 Departed early morning for Dogona, arriving late morning. Polling place was at Dogona. Voting carried out until late afternoon, returned to Balimo in the Land-rover, spent the night at Balimo.

Wednesday 6/3/68 Departed Balimo for Adiba in the Land-rover. Arriving at Dogona early morning, thence to Adiba by canoe. Polling place was at Adiba. Villagers from Iou & Ike came and voted at Adiba. Voting carried out until late afternoon, returned to Dogona, then by Land-rover to Balimo. Elections ended on this day.

\*\*\*\*\*

DIARY

- 15-6-67. Departed Balimo per M.V. Parama. Arrived Bamu Patrol Post late p.m. Overnight Bamu.
- 16-6-67. Departed Bamu early a.m. per M.V. Parama. Arrived Sagero creek at dusk. Slept on board M.V. Parama.
- 17-6-67. Departed Sagero early a.m. for Teapopo arriving mid-morning. Slept Teapopo Primary 'T' School.
- 18-6-67. Observed Teapopo.
- 19-6-67. People from Kenadiba visited Teapopo where the Census was revised and the Common Roll compiled. Talk on Local Government with the V.C. and leading men. Departed Teapopo via canoe for Mariama. Slept Mariama.
- 20-6-67. Census revised Mariama and Common Roll compiled. Discussions on Local Government and Education. Departed Mariama 11.00 a.m. for Kaviapu against strong wind and tide. Arrived Kaviapu 8.00 p.m. Slept Kaviapu.
- 21-6-67. Census revised Kaviapu and Common Roll compiled. Discussions on patrol topics. Due to heavy seas and strong winds unable to depart from Kaviapu in a sailing canoe. Slept Kaviapu.
- 22-6-67. Departed Kaviapu late a.m. for Aduru on Sumogi Is. Arrived Aduru late afternoon. Slept Aduru.
- 23-6-67. Common Roll compiled at Aduru. Census not revised as pages missing from the Census Book. Census pages also missing for Dewara, Tirio, Baramura and Lewada. It was also discovered that these villages including Dewara were not included in the Gulf Electoral Roll for 1964 but in the Fly River Electoral Roll. However people from these villages actually voted in the Gulf Electorate. Tried unsuccessfully in the afternoon to establish radio contact on the A 510 with Balimo. Slept Aduru.
- 24-6-67. Walked to Dewara where the village was inspected and the Common Roll compiled. Discussions on patrol topics. Returned to Aduru in the afternoon as there is no rest house at Dewara. Slept Aduru.
- 25-6-67. Observed Aduru.
- 26-6-67. Departed Aduru by sailing canoe for Tirio on the South bank of the Fly river arriving Tirio early P.m. Tirio is by far the most depressing of the Council villages in the Fly River area. Common Roll compiled. Visited Madiri Plantation. Slept Madiri.
- 27-6-67. Census revised and Common Roll compiled for Urio village at Madiri Pltn. A large number of men together with their wives and children have left Urio and are working at Madiri Pltn. Settled a misunderstanding of the ownership of Madiri Pltn. that Tirio villagers had, at a meeting at the Plantation with Mr. T. Holland. Heard two court cases. Slept Tirio.

(2)

AGRICULTURE:

For the food, some are mainly brought from the bush. Fish, sago, and meat are the main diet for the villages. Some crops are planted in the gardens such as, taro, yam, sweet-potato and pawpaw. Sago is mainly made in the bush and brought home in the bags. Few European's food are eaten, and are not eaten every day in the villages. Only the people who got money to spare buy these food. As far as the crops are grown, no plant diseases are found. Too much sago is made which could be better to sell to other parts of the Territory. Fish is plentiful too which could be sold to other parts of the Territory where there hasn't been sago or fish eaten. The planting of crops are sometimes individual. If the man has plenty of work to do in his garden, he may have to tell his brothers to help him.

Some villages are far away from the station and that the travelling is one of the troubles or problems. If the food and the cash crops are kept for one week, they go bad and cannot be eaten. There could be a out-board motor for the villages to transport cash crops to the station for sale.

LIVESTOCK:

As far as we know, there aren't any livestock in the villages. Except for the chickens, they are kept for selling eggs and meat.

COMMERCE AND INDUSTRY:

Trade stores are needed in the villages and the transporting of fish and timber interest the villages. The people haven't enterprised for the above mentioned industries. There hasn't been any transporting of fish and timber.

REST HOUSES

The rest houses are about six(6) to ~~seven~~ eight (8) yards in length, and the width of about four(4) to five (5) yards. In it there are two(2) rooms. The interior room for sleeping, and the verandha with a kitchen. Some rest houses seen while on patrol were in fair conditions. Few have rooves which had been torn away by wind. The steps are in poor conditions with nails sticking out of the wood. Walls of the rest houses had been gapped and they should be fixed before the next patrol. They on posts and has the height of about twelve(12) feet. They are made out of bush material, with the rooves made from the sago leaves.

MISSIONS

There are only two(2) missions in the Gogodala area. The first one is the Bamu River Mission, which is in the Bamu area. The other is the U.F.M., which is now called the E.C.P.. This the church name. They both have the same religious teaching. The missions, I would say are not really friendly people. They good teach good things from the bible. Other village people don't like the missions which are at Balimo, who stop the villages not to smoke and drink, which of course is bad.

EDUCATIONS

There is one Mission High School at Awaba. Others are Administration Primary Schools. These Administration schools are run by Administration teachers. The Missions at Awaba and Balimo have their own Primary Schools. The Bamu River Mission have their own teachers which were trained at Awaba. The other thing I would like to recommend is that, children at Ali and Makapa don't go to school which should be in school. The Mission also have their own Teachers College at Awaba.

- 28-6-67. Departed Tirio for Baramura by sailing canoe arriving noon. Common Roll compiled. Discussions on patrol topics. Slept Baramura.
- 29-6-67. Departed Baramura by sailing canoe for Lewada arriving mid afternoon. Common Roll compiled. Council Aid Post inspected. Discussions on patrol topics. Slept Lewada.
- 30-6-67. Departed Lewada for Dede as Patrol Interpreter advised that Kenalia people had gone to Dede to meet the patrol. However upon arrival at Dede which adjoins the U.F.M. Mission at Wasua, it was discovered that the Councillor for Dede (who is also the President of the Gogodala L.G.C.) had travelled to Kenalia to meet the patrol there. Word sent to Kenalia people to come to Dede for census. Slept Dede.
- 1-7-67. Compiled Common Roll for the U.F.M. Mission at Wasua. Shown around the Mission by the Station Manager. Held a conversation with the Gogodala L.G.C. Council Clerk on Council matters including the Final Financial Statement. Slept Dede.
- 2-7-67. Observed Dede.
- 3-7-67. Census revised and Common Roll compiled for Kenalia and Dede. One court case heard. Departed Dede for Pedeo (Konedobu). Slept Pedeo.
- 4-7-67. Census revised and Common Roll compiled for Pedeo and Pagona at Pedeo Village. Heard a rumor that the Councillor for Tirio had killed his wife, and that he was at Wasua Mission. Returned to Wasua to investigate the rumor; the Councillor was not there, nor could the rumor be substantiated in any way. Returned to Pedeo. Slept Pedeo.
- 5-7-67. Travelled up the Pedeo creek by canoe to Duaba arriving early afternoon. Census revised and Common Roll compiled for Luaba and Kubu at Duaba. Discussions on patrol topics. Slept Duaba.
- 6-7-67. Inspected Duaba Aid Post which has been closed down. Departed Duaba for Kini where the Census was revised and the Common Roll compiled. Discussions on patrol topics. Slept Kini.
- 7-7-67. Departed Kini by canoe for Warigi where Census revised and the Common Roll compiled. Departed Warigi by canoe and returned to Balimo Station.
- \*\*\*\*\*
- 10-7-67. Departed Balimo by canoe for Kimama where census revised and the Common Roll compiled. Returned to Balimo.
- 11-7-67. To Balimo Village where Census revised and the Common Roll compiled.
- \*\*\*\*\*
- 12-7-67. Departed Balimo for Iou where Census revised and Common Roll compiled for Iou and Ike villages. Discussions on patrol topics. Slept Iou.
- 13-7-67. Departed Iou for Adiba where Census revised and Common Roll compiled. Discussions on Patrol topics. Adiba is the largest village in the Gogodala area. Departed Adiba via canoe for Dogona. Slept Dogona.

①

GEOGRAPHY/TOPOGRAPHY

As far as we know the landscape of the area, it is flat and undulating with rivers running through the bush. The landscape of the area is swampy. Estimated width of the rivers about fifteen (15) feet. The channels are about six (6) to eight (8) feet in width. Thick bush with forest reptiles. The man clears the forest for planting crops. By next year, he would have to move to a next site.

HEALTH

For the health, we had people from Wada and Saiwasi who had eye diseases. No medical aid was suitable for the people. Apart from that, a man from Ali village in the Balimo Sub-District who could not pass urine. So the party had him in the boat to Awaba. Just then, he got better and left Awaba for Balimo. There weren't any bad diseases found, for the people are in good health.

\*\*\*\*\*

(GAWAGA BOWANG)

T/ASST FIELD OFFICER

- 14-7-67. Census revised and Common Roll compiled for Dogona. Discussions on patrol topics. Departed Dogona via Land Rover for Tai where census revised and Common Roll compiled. Returned to Balimo Station.
- \*\*\*\*\*
- 12-9-67. Departed Balimo for Wasua via Kini, Duaba and Pedea. Arrived Wasua late afternoon. Slept Mission.
- 13-9-67. Departed Wasua via M.V. Jade for Lewada to revise Census and undertake Land Investigation on Aid Post Site. However, upon arrival the village was deserted and this work was not possible. Departed Lewada for Baramura, but this village was also deserted. Departed Baramura for Tirio. There were a few men and women in this village but not enough to revise the census. Most of the people from these villages were either hunting crocodiles or working in the sago gardens which are some distance from the villages. Departed Tirio for Aduru arriving early evening. Slept Aduru.
- 14-9-67. Census revised and ~~Common Roll~~ a talk given on Local Government. Departed Aduru for Dewara. Village deserted. Departed Dewara for Pedea. Departed Pedea by canoe for Duaba. Slept Duaba.
- 15-9-67. Land survey of Duaba Aid Post. Departed Duaba for Balimo Station via Kini.

\*\*\* \*\*\*\*\*

#### INTRODUCTION

The main area patrolled was around the Fly River Estuary area. The villages of Iou, Ike, Adiba, Dogona and Tai belonging to the West Gogodala Census Division were also visited.

The main object of the patrol was the compilation of names for the electoral roll for the 1968 House of Assembly Elections. Full lists of names have already been forwarded. It was the aim of the patrol to revise the census in all villages visited. However, as already mentioned in the May, Census sheets were found missing for Aduru, Dewara, Tirio, Baramura and Lewada. The census was not revised in these villages during the June patrol, but the area was visited in September with a view to completing the Census. However this time the villages were deserted and unfortunately the census has still not been revised at Dewara, Tirio, Baramura and Lewada.

It is not intended that the oft repeated remarks in previous Patrol Reports of this area be reiterated in this Report. The East Gogodala area has been patrolled for many years and situations have changed but little. The overall influence of the Gogodala Local Government Council is minimal and this could help explain the lack of development in the area.

#### RECEPTION OF PATROL

The patrol was not greeted with overt enthusiasm but with a complacent attitude which is typical of the area.

#### VILLAGES

Housing is still poor in the Fly River area, but there is a greater improvement in the inland villages. People have little interest in maintaining standards of cleanliness in the villages and around their houses.





TERRITORY OF PAPUA AND NEW GUINEA

# PATROL REPORT

District of..... WESTERN ..... Report No. 7/67-68 (BALIMO) .....

Patrol Conducted by..... E.J. STAPLES ..... Assistant District Officer.....

Area Patrolled..... GOGODALA WEST CENSUS DIVISION .....

Patrol Accompanied by Europeans..... Mr. R.M. DIAMOND ..... Cadet Patrol Officer.

Natives..... 1 Member R.P. & N.G.C. ..... 1 Interpreter.....

Duration—From..... 12/5/1968 ..... to..... 30/5/1968 .....

Number of Days..... 16 .....

Did Medical Assistant Accompany?..... No .....

Last Patrol to Area by—District Services...../..... 3/1968.....

Medical ...../..... 11/1967.....

Map Reference..... Patrol Map attached..... See KIWAI 1:250,000 AWORAN RIVER 1:250,000 .....

Objects of Patrol..... Census Revision, Discussions on Council Administration matters.....

Director of District Administration,  
PORT MORESBY.

Forwarded, please.

/ / 19

.....  
District Commissioner

Amount Paid for War Damage Compensation .... \$.....

Amount Paid from D.N.E. Trust Fund .... \$.....

Amount paid from P.E.D.P. Trust Fund .... ..

BPC

VILLAGES (Cont.)

During the June patrol it was noted that the grass was cut and the village cleaned only a day or so before the patrol's visit. During the September patrol the villages visited were in a shocking state. Many houses have gaping holes in their roofs which could be repaired in a matter of hours. The idea of a Council or Government weekly work day is non-existent. Villagers appear most indolent and they certainly have no inspired guidance from their Councillors.

OUTLINE OF POLITICAL SITUATION

The area patrolled with the exception of Urio and Kenalia is covered by the Gogodala Local Government Council. Both Urio and Kenalia show little inclination towards joining either the Gogodala or Kiwai Councils.

The Council has made little impact upon the Fly River villages. They have benefited little from the Council by way of Capital works and have a valid complaint that they have received next to nothing for their tax paid. The only constructive project in the area has been the building of an Aid Post at Lewada.

The Fly River people are a little reticent about paying Council Tax, and unless these people receive increased benefits from their Council the situation is bound to deteriorate. The situation is different in the West Gogodala, the people obtaining more benefits and hence being more satisfied. The trouble with the Fly River people is that their Councillors lack drive and participate little in Council meetings. As a consequence, they are overwhelmed by the whims of the Aramia River Councillors.

People in the area while not interested in Politics are however politically aware of both central and local government. They are used to voting and understand the system.

It is felt that in many ways Administrative control of the Gogodala Fly River villages could be more effectively carried out from the Daru Sub-District side than from Balimo. Daru Sub-District Office staff visit the Fly River Estuary area far more frequently than Balimo Officers. Both Kiwai and Gogodala villages are mixed together in the area which has easier access from Daru by boat than from Balimo. However, from the Council point of view it will still be necessary for the Adviser to visit the Gogodala villages for Local Government Administrative purposes.

AGRICULTURE

Ample fresh food is available for the people, the staple being sago. The only Cash Crop in the area is copra. However while the people have been encouraged to plant more ~~copra~~ coconuts and to market their copra, they have shown no interest. In fact all copra dryers are falling down and there is no cash cropping being carried out by the indigenous people at the moment. The only plantation is at Madiri which is close to Tirio village.

LAND

While at Tirio, some people there made a claim to ownership of Madiri Plantation which adjoins the village. They claimed that they had received only a few trade store goods many years ago for the land and that this payment was insufficient. A meeting was held at the plantation with Mr. T. Holland and the matter settled.

Tirio people wish to find a new village site as their present site is most unsuitable. They have little land which is suitable to settle on, hence their reason for casting envious eyes upon Madiri Pltn. The Baramura people have agreed to let the Tirios settle with them at

LAND (cont)Baranura.

The Village Constable from Kenalia has led about half his village to a new village site close to Teapopo Primary 'T' School. This move must be applauded as the new village site is close to the health and education services at Teapopo. The remaining Kenalia people who are mainly old folk, have elected to remain at the old village site. It is hoped that because of this move the progressive Kenalia people will shortly choose to join a Council.

A survey of the Aid Post site was carried out at Duaba. The full land investigation will have to be undertaken when the owners of the land return to the village.

COURTS

A Kaviapu man was convicted at Tiris for repeated tax defaultion and sentenced to three months I H L. A young man at Dede was convicted for assaulting his wife and sentenced to three months I H L. His wife laid a complaint against her husband who was convicted and sentenced to two months gaol last year for the same offence.

Mr. T. Holland of Madiri Pitn. laid a complaint against a mute labourer for having maimed one of his pigs. However, upon investigation the man was not charged due to insufficient evidence.

Carriers and Canoes

Carriers are easy to hire and volunteer freely. Large sailing canoes which are most suitable for patrolling in are not easy to come by. These canoes are slow but most reliable.

HEALTH

The health of the people is excellent and the area is adequately covered by health services. However the rate of infant mortality in the Fly River area is far too high. Most women in this area have their babies in the villages in the traditional manner. Census figures do not show an accurate picture in the matter of infant mortality as deaths of this nature usually escape being recorded.

EDUCATION

Schools are established in the area at Teapopo, Wasua and Balimo. There are still a large percentage of children of school age who are not attending school. Reasons are two-fold. Firstly, many villages lack proximity to the schools and secondly, there is still the traditional attitude that many children be required to assist their parents at subsistence gardening.

South Bank Fly villagers again asked that a school be established in their area. A school with a strong rural emphasis is highly recommended for this area.

It is worth noting that in the non-council villages the school attendance rate is negligible. At Uris it is nil, a very sorry state of affairs.

ROADS

Apart from the main roads from Balimo to Dogona and Tui, roads are non-existent in the area. Due to the swamps it is impracticable to build roads in most areas. However, a road from Balimo to Wasua is possible and has in fact been partly constructed. This road is Administratively desirable and the Council has recognized this point

→ 67. 3. 30

(21)

7-1-68  
67-3-30

17th July, 1968.

District Commissioner,  
Western District,  
DARU

MULIMO PATROL 7/67-68  
ITEMS OF ANTHROPOLOGICAL INTEREST

Report of Anthropological findings by  
Mr. Staples, Assistant District Officer, during his  
recent patrol to Cogedala. The Census Division refers.

2. The Papua and New Guinea Museum advise  
that the specimens referred to would be of value to  
their collections.

3. Your action in trying to obtain these  
specimens for the Museum would be appreciated.

T.W. Ellis  
(T.W. ELLIS)  
Chairman

ROADS (Cont)

by allocating money to help towards its construction.

A road could be built between Masua and Peda, but would serve little purpose. The bridle paths in the area are in a reasonable state, but leeches abound.

MISSIONS

The puritanical outlook of the U.F.M. Mission has not wavered. The influence of the Mission appears to be greatest in the villages furthest from the Mission Station. Villages close to the Mission appear to ignore the Mission and these villages are by far the most untidy. The Mission has failed in their attempts to rid the Fly River area of the practices of betel-nut chewing, smoking and Tuba drinking.

CENSUS

As explained in the Introduction, the census was revised in all villages but Dewara, Tirio, Baramura and Lewade. A copy of the Village Population Register is attached and should be self explanatory.

PERSONNEL

Reference must be made to the help given by Const. 11229 Eberuba Kerari and Mr. Soka Gairi in the compilation of the Common Roll and the revision of the census. Both were shown how to perform these duties and proved fully capable in carrying them out efficiently.

CONCLUSION

There is an apparent lack of Economic, Social and Political development in the area patrolled especially in the Fly River Estuary area. This can be blamed upon the apathy of the people. Their only true key to progress is through self help.

The patrol was of a routine nature and the main objects were achieved.



(R.B. Phillips)  
PATROL OFFICER

P/R. → 67-3-30  
7-1-2  
(20)

Please quote File No. 60.

6th July 1968.

Director,  
Department of District Administration,  
KONEDOHU.

Sir,

Subject: Balimo Patrol 3-67/68. Items of  
Anthropological Interest.

Reference: Your 7-1-2/67-3-30 of 28.6.68.

If the specimens referred to and illustrated are available they would be of value to the museum's collections. These are of particular interest as the officer concerned in collecting them has obtained interesting documentation on them.

I would appreciate your action in trying to obtain these specimens for the Museum.

Yours faithfully,

*Roy E. Macray*  
(ROY E. MACRAY)  
PREPARATOR IN CHARGE.

*See file 7-1-2*



ARAMIA RIVER

FLY RIVER



19

67-3-30

1st July, 1968.

District Commissioner,  
Western District,  
DARU

PATROL NO. BALIMO 7-67/68

I acknowledge with thanks receipt of Patrol Report covering patrol by B.J. Staples, Patrol Officer, to Gogodala West Census Divisions.

From the report it appears that it is necessary for the Council Adviser to stimulate the Council into affecting its works programme. It also appears necessary for the Council to be advised of the need for the clerk to initiate legal action against tax defaulters. If prosecutions do not ensue it is likely that in future years the tax collection will become far more difficult and the backlog of cases become too great for the clerk to handle.

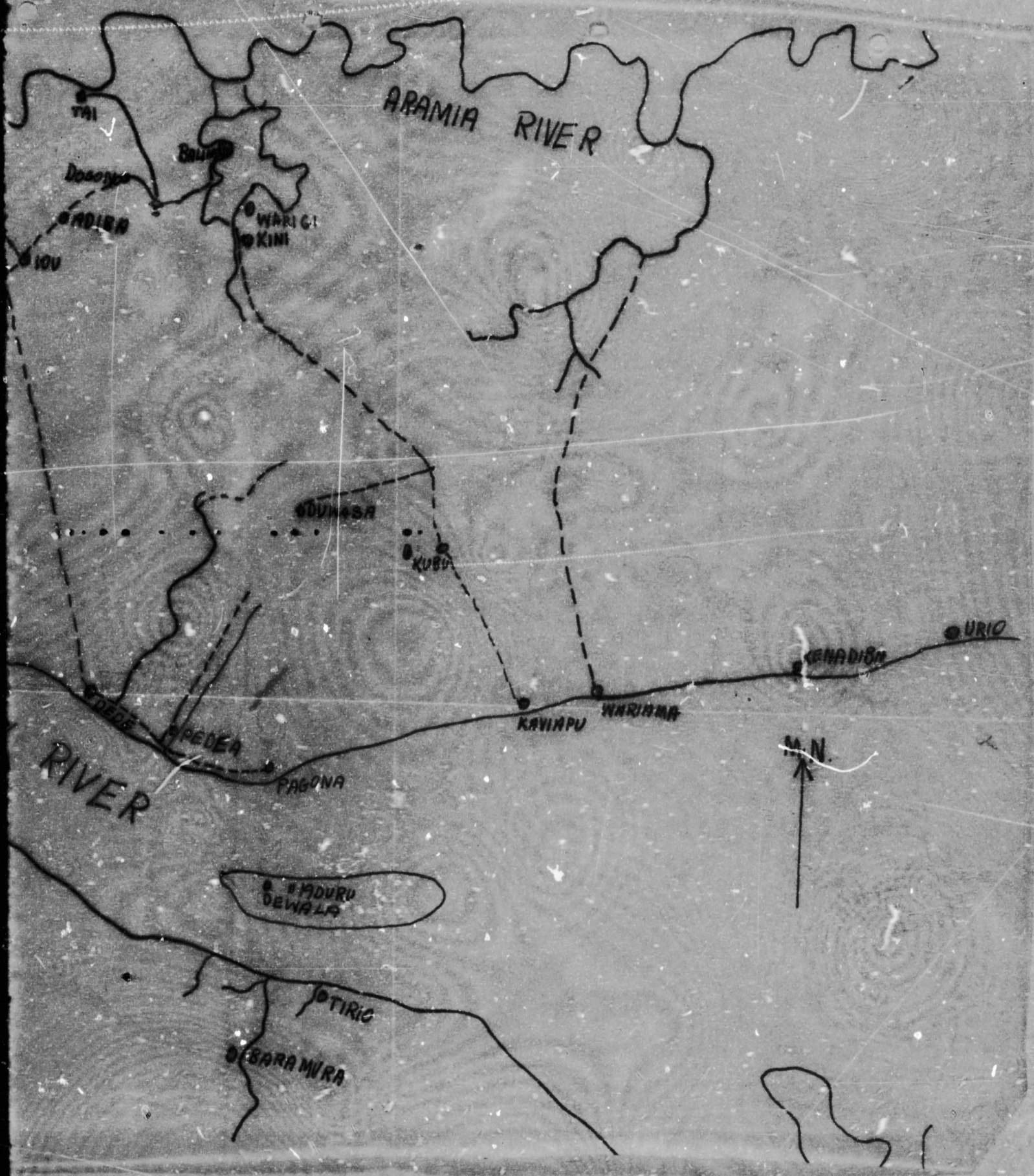
On Page 3 of the report Mr. Staples says that he advised the people "... that it was not in the power of the Patrol to overrule the review Committee". It is however in the power of the Assistant District Commissioner to overrule the Committee, (vide Gazette 2 of 10/2/66) as he is the Council Tax Appeal Tribunal under 561 of the Local Government Ordinance. The taxpayers concerned should have therefore been referred to the Assistant District Commissioner.

Presumably the Department of Forests have been advised of the timber purchases being made by the Mission and agree with the procedures and prices quoted.

c.c. Mr. B.J. Staples, P.O.  
Sub-district Office,  
BALIMO  
Western District.

(T.W. HILLIS)  
Director





7-1-2/57-3-30

28th June, 1968.

The President of Trustees,  
Papua and New Guinea Museum,  
P.O. Box 035,  
PORT MORSBY.

BALIMO PATROL 3-67/68  
ITEMS OF ANTHROPOLOGICAL INTEREST.

Dear Sir,

Mr. B. J. Staples, Patrol Officer, on a recent patrol in the BALIMO Sub-district, Western District, procured these items of possible anthropological interest from KWA village.

I am attaching copies of his remarks and sketches of these items and also a locality sketch for your information.

Mr. Staples did not indicate what he had done with these artefacts but I presume that he is holding them pending further instructions. I would therefore appreciate your advice as to whether they should be obtained for the Museum or not.

Yours faithfully,

(S. A. ELLIS)  
Director.

67-3-1

67.2.35



TERRITORY OF PAPUA AND NEW GUINEA

# PATROL REPORT

District of..... **WESTERN** Report No. **Patrol Balimo No.5/67-68**  
 Patrol Conducted by..... **C. BOWAMA Post Field Officer (Trainer)**  
**R.P. Phillips P.O.**  
 (accompanying R.C. Phillips, P.O.)  
 Area Patrolled..... **EAST AND WEST GOGODALA Census Divisions**

Patrol Accompanied by Europeans..... -

Duration— From **16.** / **2** / **1968** to **6** / **3** / **1968**  
 Natives..... **Teacher Onea Lekrer, T/Assistant Field Officer**  
**Gawaga Bowame, Const. Beti, Interpreter Albert.**

Number of Days..... **SIXTEEN**

Did Medical Assistant Accompany?..... **No**

Last Patrol to Area by—District Services..... / **7** / **1967**

Medical ..... / **11** / **1967**

Map Reference..... **Kiwai 1:250,000 Aworra River 1:250,000**

Objects of Patrol..... **Conduct House of Assembly elections**



Director of District Administration,  
PORT MORESBY.

Forwarded, please.

**30/4/1968**

**H. Bensted M.B.**  
District Commissioner

Amount Paid for War Damage Compensation ..... \$.....  
 Amount Paid from D.N.E. Trust Fund ..... \$.....  
 Amount paid from P.E.D.P. Trust Fund .....  
 .....  
 .....



TERRITORY OF PAPUA AND NEW GUINEA

67 2 30 (17)

Telephone  
 Telegrams  
 Our Reference 67-3-1  
 If calling ask for  
 Mr. RAC.bd



Department of District Administration,  
 Western District,  
DARU.  
 14th June, 1968

The Director,  
 Department of District Administration,  
KONEBOBU.

BALIMO PATROL 7/57-68

Please find herewith report as above, submitted by Mr. R.J. STAPLES, Assistant District Officer, Together with covering memo, plus census sheets and covering letter. Copy of the Patrol Instructions is attached.

2. Please find attached also BALIMO 14-2-1 of 6th June, 1968, advising of the formation of a separate village, viz. WASAPEA. As the people of this villare live 4 hours' walk from PIKIWA where they were formerly censused, this would seem to be logical, and accordingly I add my recommendation to that of Assistant District Commissioner.

3. This officers comments deal adequately with the main issues in the report. I would add the following:-

- (a) Certainly the Councillers need more direction in their duties: they are not Policemen, and should be providing a two way exchange between the people and the Council. Until they learn to be true representatives, there is little that the people can obtain from the Council.
- (b) Economic development in the Gogedala will perforce be in the native of the small enterprises discussed. The Registry of Co-Operatives cannot assist in the foreseeable future, and it will only be by such "bootstrap" operations that there will be any significant rise in income for the area.
- (c) The Council is rightly interesting itself in economic development. It is the only agency in the area which can co-ordinate activities to the extent required.

4. The report indicates clearly that Mr. STAPLES has conducted his patrol capably and efficiently. His presentation is neat, and he is to ve commended.

(I.A. Holmes)  
ACTING DISTRICT COMMISSIONER

LAC/

57-3-1.

~~Handwritten notes~~  
16

The Director,  
Dept. of District Administration,  
Kenedon.

Balimo Patrol 7/67-68.

Please find herewith report as above, submitted by Mr. R. J. Staples, ~~Assistant~~ Assistant District Officer, together with covering memo, plus census sheets and covering letter. Copy of patrol instructions is attached.

2. Please find attached also Balimo 14-2-1 of 6th June 1968, advising of the formation of a separate village, viz. WASAPEA. As the people of this village live 4 hours' walk from PIKIWA where they were formerly censused, this would seem to be logical, and accordingly I add my recommendation to that of the A D Commissioner.

3. These ~~the~~ Officer's comments deal adequately with the main issues in the report. I would add the following: --

(a) Certainly the Councilors need more direction in the way they are not Policemen, and should be providing a two-way exchange between the people and the Council. Until they learn to be true representatives, there is little that the people can obtain from the Council.

(b) Economic development in the Gogodala will perhaps be in the nature of the small enterprises discussed. The Registry of Co-operatives cannot assist in the foreseeable future, and it will only be by such "bootstrap" operations that there will be any significant rise in income for the area.

(c) The Council is rightly interesting itself in economic development. It is the only agency in the area which can co-ordinate activities to the extent required.

4. The report indicates clearly that Mr. Staples conducted his patrol capably and efficiently. His presentation is neat, and he is to be commended.

AT  
a/DC.

c.c. The A D  
Subd  
Balimo.

TERRITORY OF PAPUA AND NEW GUINEA

Ref: 67-3-39

Dept. of District Administration,  
KONEDOBU. Papua.

27th August, 1968.

District Commissioner,  
Western District,  
DARI.

PATROL NO. BALIMO 4-67/68

I acknowledge with thanks receipt of Memorandum  
\* of Patrol/Patrol Report covering patrol by.....  
to the East and West BOWAMA..... Census Divisions.

The work done by Mr. BOWAMA in presenting this report  
is appreciated. It is felt that the Officer in charge of the  
patrol or the Assistant District Commissioner, BOWAMA, could  
have assisted his more in the expression of his ideas by  
correcting his manuscript and explaining the reasons for the  
corrections.

*T.W. Ellis*  
(T.W. ELLIS)  
Director

\* Delete as necessary.

Mr. G. BOWAMA,  
C/- Sub-District Office,  
BALIMO.  
Western District.

67-3-1

Sub-District Office,  
BALIMO,  
Western District.

5th June, 1968.

District Commissioner,  
Western District,  
DARU.

BALIMO PATROL No.7/67-68

Please find herewith two copies of a report of Balimo Patrol No.7/67-68, and three copies of census figures for the GOGODALA WEST Census Division. The patrol was conducted and the census compiled by Mr.R.Staples A.D.O.. He has submitted a full-scale patrol report at my instance, since I felt that such a report would be of assistance to me.

2. The following comments are offered on Mr. Staples' report.

POLITICAL SITUATION (P.3)

Spectacular capital works are beyond the resources of the Gogodala Council except with outside assistance. Consequently, I am afraid that the Gogodala Council will have to be content with low-level capital works spending for some time to come. However, as Mr. Staples points out, such bread and butter projects do not provide an incentive to the people to interest themselves in Council affairs, although the provision of wells, aid posts, etc., may affect them nearly every day of their lives. If interest in Council affairs were necessarily dependent on large capital works, then the state of apathy in this area would be likely to continue for some considerable time. However, I am not convinced that more could not be done to interest the people in the routine workings of the Council and in the domestic issues that frequently come up at Council meetings.

FORESTRY (P5)

The reaction of the PISI villagers when told of the difficulties that had arisen with the sawmill that was to have been installed at their village may well provide an insight into the people's lack of enthusiasm. (The Gogodala Council had been advised that the Administration had allocated \$3,000 to assist in the purchase of a sawmill for installation at PISI Village. This was made known to the people, and the project included in the Council estimates. However, when the Council asked for the money in April, it was told that the grant had been re-allocated. It now seems that the project will have to be deferred for some considerable time to come.) Mr. Staples' description of the way that the people took the news would seem to indicate that they have been disillusioned by similar disappointments in the past. If so, this would at least partly explain the lack of interest in Council affairs.

COMMERCE AND INDUSTRY (P.6)

Mr. Staples' references to "cooperative" trade stores in this section should be taken to mean that the stores' capital has been subscribed by a number of persons, not that the stores have something to do with the Registry of Co-operatives.

The number of native-owned village trade stores in the Census Division is gradually increasing. Some of these stores are ordering their trade goods direct from Port Moresby, and these are delivered by Steamship boats which call at Balimo about once a month.

This regular shipping service is a result of the U.F. Mission shifting its supply headquarters from Wagia on the Fly River to Kawit on the Aramia River. I see this as one of the most promising developments in years for this area. A regular shipping service to Port Moresby could be of incalculable benefits to this area.

Mr. Staples remarks that the Council is to follow up the possibility of marketing sage in Port Moresby. I may add that the Council may also interest itself in the possibilities of bulk buying of trade goods for re-sale to the small village stores.

A letter is being written to Mr. Goebel about the matter raised by the PIKINA villagers.

Mr. Staples has conducted a competent patrol and submitted an interesting report.



(Peter A. Hardie)  
Assistant District Commissioner



14-2-1

**BALIMO,  
Western District.**

**6th June, 1968.**

**District Commissioner,  
Western District,  
DARU.**

**VILLAGE DIRECTORY**

With reference to the accompanying Village Population Registers for the GOGODALA WEST Census Division.

It will be seen that the village of WASAPEA is included on the Registers, although it is not shown in the Village Directory. The villagers of WASAPEA were formerly censused as part of PIKIWA village. However, as they live four hours walk from PIKIWA and form a separate language group, it is thought better to regard them as a separate group.

It is recommended that the Village Directory be amended to include WASAPEA in the GOGODALA WEST Census Division.

*Peter A. Hardie*

**(Peter A. Hardie)  
Assistant District Commissioner**



14-2-3

BALINGO,  
Western District.

6th June, 1968.

District Commissioner,  
Western District,  
DARU.

CENSUS FIGURES - GOGODALA WEST C.D.

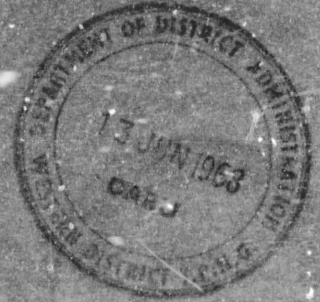
Submitted herewith are Village Population Registers for GOGODALA WEST Census Division.

2. It will be noted that the officer conducting the census has written on the top of the V.P.R. form that the last census was conducted in 1965. This is not strictly accurate, as there was a census in this area in 1966. However, most of the census records used in the 1966 census could not be found, so use had to be made of records which were last amended in October 1965.

3. As a consequence, the V.P.R.s show inflated figures for births, deaths and migrations. To obtain birth rate, death rate and natural increase ~~per 1000~~, Mr. Staples has used the 1965 population figures as a base and divided the natural increases and decreases since that date by 2%.

*Peter A. Hardie*

(Peter A. Hardie)  
Assistant District Commissioner



67-1-3

Sub-District Office,  
RAIHO,  
Western District.

9th May, 1938.

Mr. E. Staples A.D.O.,  
Sub-District Office,  
RAIHO.

RAIHO Patrol No. 7/37-38

Please report RAIHO on 12th May for a patrol to the GOVERNMENT RESERVE Division. You will be accompanied by Mr. Williams for the first part of the patrol.

The objects of the patrol are:

- (a) To familiarize yourself with the area and people, especially as this related to your work as Council Advisor.
- (b) Discuss current and future Council affairs with the people. In this connection, you should ascertain the number of tax defaulters and attempt to discover the reasons for their non-payment of tax.
- (c) Contact the council members.

3. Because of my own lack of familiarity with the area, I should like you to submit a full-scale report at the conclusion of the patrol.



(Peter A. Hardie)  
Assistant District Commissioner





TERRITORY OF PAPUA AND NEW GUINEA

Telegrams  
Facsimiles  
Out Reference... 67/3  
If calling ask for  
Mr.

Sub-District Office,  
BALIMO,  
Western District,  
4th. June, 1968.

The Assistant District Commissioner,  
Sub-District Office,  
BALIMO.

PATROL REPORT NUMBER 7/67-68 - BALIMO  
GOGODALA WEST CENSUS DIVISION

Patrol Conducted by	:	K. J. [unclear] Assistant District Officer.
Area Patrolled	:	Gogodala West Census Division
Personnel Accompanying	:	R.M. DIAMOND, Cadet Patrol Officer (Part of Patrol only), 1 Constable P.L. & H.G.V. Albert [unclear] (Interpreter)
Duration of Patrol	:	12/5/68 to 27/5/68.
Number of days	:	16
Last Patrol to Area	:	FEBRUARY MARCH 1968 November, 1967. Unknown.
D.D.A.	:	
P.H.D.	:	
D.A.S.F.	:	

Objects of the patrol

Census Revision,  
Discussions on Council matters;  
(a) Tax defaulters,  
(b) Tax Rule 1968/1969,  
(c) Council elections and  
(d) capital works programmes.

INTRODUCTION:

The purpose of this Patrol to the GOGODALA West Census Division of the BALIMO Sub-District was one of an introductory nature, so that the officer conducting the patrol could introduce himself to the people and the area. Incorporated in this Patrol were discussions centered on Council Administration - (i) to ascertain the number of tax defaulters and gather their reasons for non-payment of Council Tax, (ii) discussions on the 1968/1969 Council Tax Rule, (iii) discussions on the coming Council elections (due to commence on 19th. August, 1968), (iv) discussions on future capital works projects for individual villages in the Census Division.

The people themselves introduced into discussion the subject of economic development. Copra production and marketing was a subject discussed in all the villages. To a minor degree, crocodile skin sales, trade store development and sago marketing were also points of discussion.

The area patrolled comprised all the villages in the GOGODALA West Census Division. The topography of this Census Division is one of humai grassland on undulating clay ridges combined with swampy lagoon areas which filtered into the ARAMIA River. The topography varies a little after the junction of the SOAMI and ARAMIA rivers where it becomes one of wooded, undulating ridges. The geology is basically the same throughout the Division. It is one of a clay sub-soil with a rich black fertile top soil of about six inches in depth.

DIARY:

Please refer to Field Officer Journal folios 18 to 25 paragraphs 58 to 76.

RECEPTION OF THE PATROL:

The Patrol was received cordially by all villages. It has been 10 months since the last District Administration patrol to this Area and the people in some of the villages seemed gratified that at last someone had come to speak with them. Very few absentees were encountered throughout the patrol, the only absentees being those who were legitimately working inside or outside the District. Very few villagers were away crocodile shooting at the time of the Patrol.

VILLAGES:

The standard of housing in the villages was above average for this area. With the exception of the villages of MAKAPA and ISAGO all the villages had adopted the family system of house construction. Each family had its own house in the village. The villages of ISAGO and MAKAPA still have long houses where the whole village resides.

All villages are well sited with the exception of AKIRA. This village has chosen for its site an area void of good drinking water. The GOGODALA Council is in the process of alleviating this deficiency by installing a 1 x 2,000 gallon galvanised iron tank and catchment area in this village.

The GOGODALA Council has assisted the village of ADIRA by installing a water pump and well from which drinking water of a good quality is now readily available. The Council is also in the process of installing a 1 x 2,000 gallon galvanised iron tank at KOTALE village. The Council has also constructed a cement well at ALI village to assist this village with clean fresh drinking water.

A good supply of fresh water is a problem in all the villages with only ALI and ADIRA being exceptions. In the villages the source of fresh water is either the swampy lagoon or the ARAMIA River. This water, though drinkable, is not pleasant to the palate.

COUNCILLORS:

All the villages with the exception of WASAPEA, MANA and IKE have individual Councillors. The village of WASAPEA is included in the PIKIWA ward for which there is only one Councillor. The same is the case for IKE which is included in the IOU ward and MANA which is incorporated in the MUMUNI ward.

Not one of the Councillors in this Division is really

outstanding. In some cases Councillors have been really neglecting their constituents. Some males of DADI village, with evident deformities, were told to pay tax by the Tax Review Committee. These people asked the Patrol for exemptions. They were enlightened that it was not in the power of the Patrol to overrule the Review Committee. On further investigation into this matter it was found evident that the Councillor for this ward had not assisted his people when the Review Committee visited their village by informing the Committee of the deformed peoples inability to acquire money with which to pay Council Tax. A similar situation also occurred at ALLI village. Here numerous school children of taxable age had been included as tax defaulters. Once again the ward Councillor had not seen it fit to inform the Review Committee that these males were school pupils, thus, neglecting the rights of their constituents.

*Yozala 9  
10/2/66*

In the majority of wards the Councillors seemed to be acting more in the capacity of a policeman rather than a politician. The Councillors police the village with regard to village sanitation and hygiene. Their only other duty with the exception of attending monthly Council meetings is assisting P.H.D. and D.D.A. Patrols to their area. It is clearly evident that political education is required throughout this Division.

#### POLITICAL SITUATION:

The current political situation appears good. The people in most of the villages are able to keep abreast of current Territory political affairs through the medium of radio. Just about all the villages have at least one radio. The radio station which contains the most interest for these people is Radio DANU.

Though the people of the Division are not ignorant politically they have not seemed to have grasped the basic ideas of Local Government.

The people are not aware of what the GOGODALA Council has been doing for them. They also had no idea what had been discussed in Council meetings. This could be attributed to lack of interest on the part of the people and also on the part of their elected Councillor. The people of each village were asked what they would like the Council to do for them in the sphere of capital works. A negative reply was the answer in the majority of villages. It is not wholly the fault of the people that stagnation has arisen in Council affairs. It could be because of the uninteresting capital works programmes the Council have indulged in since 1959. The fact that the Council that the Council has provided very few essential services to the community could also be a reason for Council disinterest. There are very few projects that the Council have embarked upon that the people can see which have actually benefited them, the man in the village. The reason for the lack of interest shown in Local Government, therefore, is not wholly the fault of the people. It could be indirectly the fault of the Council itself and also the Council members and its advisers.

To stimulate interest in Local Government the Council must incorporate in its works programmes projects which will benefit the people economically and socially. In so helping the people it should be made evident to the people themselves that the Council is an asset not a liability to which Council tax must be outlaid by them yearly.

#### AGRICULTURE (Economic Development):

The people of this Census Division are economically frustrated. They are becoming to realise that their main source of income, crocodiles, is slowly becoming depleted. They feel that they now have to diversify and find other avenues of obtaining an income.

The villages on the upper reaches of the ARAMIA river, namely ALLI, MAKAPA, MUMUNI and MANA, find an income in selling logs to the

AWABA U.F. M. sawmill. Through this they obtain an income which facilitates tax payment to the Council and the purchase of small items which are becoming, to them, necessary for sophisticated day to day living. The village of ALI is the only one of these four villages which still relies heavily on the sale of crocodile skins for an income.

The villages of WASAPEA, PIKIWA, DADI, IKE, AKETA, ADIBA, KOTALE, KEWA, and IOU still rely heavily on the sale of crocodile skins for a subsistence income. This is not the case for TAI, DOGONA and PISI villages. TAI village has a contract with the BALINO Boys Vocational School for the supply of logs to their sawmill. DOGONA village supplies fresh food to the Government Station and the U.F. Mission at BALINO. PISI village supplies the GOGODALA area with pit saw timber. The GOGODALA Local Government Council is this village's largest customer.

As far back as 1957 the people from KEWA, KOTALE, ADIBA, IOU and IKE used to process and market copra. When the price for copra began to decline the people decided not to proceed with this industry. It is only now that the people are thinking of recommencing work on a copra industry in this Division.

Numerous villages asked the Patrol how they would go about processing and marketing copra. The majority of villages had copra driers of sorts in their villages. Those that did not have driers, and had coconuts available for processing, were going to request assistance from the GOGODALA Council in order to construct semi permanent material driers.

PIKIWA village requested assistance from the Agriculture Department in that they required an Agricultural Field Worker to assist them in lining out their coconut groves. They had already cleared the groves and obtained seed nuts for planting but they are unable to plant them as they do not know the correct plantation form. ISAGO village also requested that an Agricultural Field Worker come and speak to them on the fundamentals of coconut and rubber planting. The people of DADI and KEWA villages requested assistance from their Council in order to construct copra driers. The same was the case for TAI village.

In all the villages there are at present sufficient coconuts to commence a copra industry in this Division. Some of the dry nuts could be used for copra production whilst others could be used for planting. All it requires to initiate a copra industry in this Division is the co operation and enthusiasm of the village people with assistance from the GOGODALA Council and the Agriculture Department. The people at this time seem enthusiastic, the Agriculture Department and the Council should capitalise on this.

The only villages which showed interest in a rubber industry were MAKAPA and ISAGO. The Agriculture Department had spoken to the people of MAKAPA on the advantages of rubber and had advised the people to prepare plots. They have commenced doing this and they now require assistance from the Agriculture Department to mark out their plots. The ISAGO people would like an Agriculture Field Worker to come and discuss with them the advantages of rubber production.

At the present time the people of this Division are showing a keen interest in economic development. This interest may have crystallised from past feelings of frustration. It is clearly evident, though, that the people wish to diversify their economic interests and not rely wholly on the sale of crocodile skins for an income.

#### LIVESTOCK:

Domesticated livestock only plays a minor role in the subsistence economy of these people and plays no part at all in their cash economy. Pigs are few as are fowls and ducks. They were noticed only in the villages of MAKAPA, ISAGO, KOTALE, ADIBA, DOGONA and IOU. This has its advantage in that there are no complaints regarding pig damage of

cash or subsistence gardens.

FORESTRY:

The villages of ALL, MAKAPA, MUMUNI, NANA and ISAGO are involved in a timber deal with AWABA U.F.M. The Mission has a sawmill at AWABA which is operated by Gogodala people under the supervision of an European sawmiller. The mill is a Mission owned concern. The people of the above-mentioned villages supply this mill with logs for milling.

The logs are cut by these village people and are floated down the ARANIA river to the Mission for sale. Logs which are cut by their owners of their land are purchased by the Mission at 65 cents per 100 super feet. When logs are cut by village people off another persons land the land owner/log owner receives the amount of 10 cents per 100 super feet. The person who cuts the log and brings it to the Mission receives the amount of 5 cents per 100 super feet. The third form of purchase is where the Mission sends its employees to cut logs off the land of village people. The land owner/log owner in this case receives the amount of 10 cents per 100 super feet.

The Missionary in charge at AWABA informed the Patrol that in the near future the purchase price of logs will increase by 15 cents per 100 super feet. That is the land owner/log owner who does not cut his own logs will still only receive 10 cents per 100 super feet but the man that does the actual cutting and selling will receive 70 cents per 100 super feet. The man that cuts and sells his own logs will receive 80 cents per 100 super feet of log.

The people of MAKAPA, MUMUNI, NANA and ISAGO displayed dissatisfaction with the price they had been receiving from the Mission for their timber. They told the Patrol that the Mission was not measuring the logs but just giving them the flat rate of \$1.00 per log. This claim was not substantiated when the Patrol discussed this matter with the Mission. The fact that the Mission is increasing its log purchase price by 15 cents per 100 super feet may make the people happy.

Another point which caused concern for the ISAGO people was the practice of the Mission of sending its workers to cut logs off the land of the ISAGO people. The ISAGO people were under the misconception that the 10 cents per 100 super feet that the land owner/log owner was receiving for his log from the Mission was payment for land purchase rights. The Patrol informed the people of this village that this was not so as only the Administration could purchase land from the local people. This misconception was resulting in the fact that the people would not accept their 10 cents per 100 super feet. This was so because they thought by accepting this money they might jeopardize their land ownership rights. This Mission was informed of this misunderstanding.

Whilst at PISI village the Patrol advised the people of the complications that had arisen with the purchase of a sawmill by the GOGODALA Council. This mill was to be installed at PISI village this financial year. The people showed disappointment but they gave the Patrol the impression that they never really expected this sawmill project to eventuate. In their disappointment they practically admitted to the Council that they thought very few of the proposed Council projects ever eventuated. The people told the Patrol that they would continue milling and selling pit sawn timber until the Council sawmill was installed.

All the villages upstream of PISI seem jealous of PISI because they have been chosen as the people to operate this mill and their village has been chosen as the mill site. These villages informed the Patrol that they would not assist this mill by



supplying it with logs. The people concerned were advised that this mill was not going to be the property of the PISI people but the property of the GOGODALA Council. As the mill was the property of the Council the people then resolved that they would cooperate in this venture and would supply the mill with logs.

#### COMMERCE AND INDUSTRY:

There are six trade stores in all in this Census Division. They are located at ALLI, PIKIWA, KEWA and PISI villages with two stores at KOTALE village.

The store at ALLI village is a village cooperative type of venture. All trade goods for this store are purchased from Mr. SENIOR's store at BALIMO. Mr. SENIOR supplies transport for these store goods from BALIMO to ALLI and whilst he is there he purchases crocodile skins from the people. In 1966-1967 the store was a going concern financially. In 1966 total transactions were to the amount of \$522.84. This was for the invoices that the store clerk was able to locate. Turnover for 1967 was to the amount of \$144.30. The store at present is in recess and has a debt of \$65.00 with Mr. SENIOR. All the profit that was made in this store was invested again in the store.

The store at PIKIWA village seems to be operating under a cloud of peculiar circumstances. The actual store building was constructed by the people of PIKIWA village. The store was stocked with trade goods by Mr. GOEBEL late of BALIMO. The people advised the Patrol that money was owed them by Mr. GOEBEL but how this arises is unknown. An explanation from Mr. GOEBEL would be helpful in clearing up this matter.

The PISI cooperative trade store is the most financial store venture in the Division. All adult residents of the village have cooperated in this venture by contributing 10 cents share capital per head. A total share capital of \$64.80 was obtained in this manner. Cash on hand in the store at the time of the Patrol to this village was \$210.00. There was also a reasonable amount of stock in the store. The store did not have a bank account but have since opened one to the amount of \$60.00. All profits from this store are put back into the store.

The people of DABI village are thinking of commencing a trade store venture at the end of this year, 1968. They have a society account, \$ 1760 to commence this store, with a present balance of \$269.09. At present no work has commenced on the actual construction of this store.

There are two trade stores at KOTALE village neither of which are of a grand nature. One of the stores which has 33 co-operative subscribers has capital of \$10.00 in the Commonwealth Savings Bank and cash on hand of \$3.00. The only trade goods in the store was 2 x 4 gallon drums of kerosene. The other store was on a slightly larger scale.

The trade store at KEWA village was only a small affair. This store is to be disbanded in the near future. The present store will be succeeded by a store operated by the KEWA Women's Club.

Numerous villages showed interest in the sale of sago. One indigene from KOTALE village went to PORT MORESBY with a supply of sago to explore markets for sago sales at the Capital. The possibility of marketing sago in MORESBY is to be followed up by the GOGODALA Council.

#### COMPLAINTS:

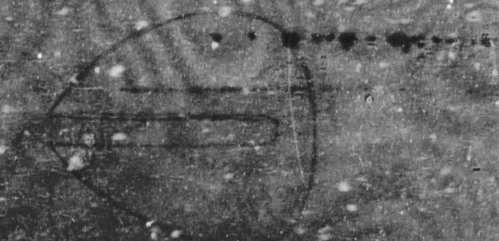
Numerous marital complaints were brought to the attention of the Patrol. These were settled amicably by the parties concerned.

(8)

3

of the WANDI river region also have a similar weapon but it is called a WARTIARI. According to an aged male of KEKA village this type of club head is only used by GOGODALA and KANURA people. The actual specimen obtained is supposed to be three generations old. This club head has been passed down through the one family for these three generations. Where actually the stone came from nobody

FIG 1



ONE SIDE CONVEX .....  
OTHER SIDE CONCAVE.

cannot be bothered finding \$6.50 and paying the tax. The lack of money or able to find such money was not an excuse put forward by defaulters.

The people were advised of their obligations as citizens and were also advised of the pertinent sections of the Local Government Ordinance concerning Council Tax Rules.

The people of MAKAPA village informed the Patrol that they were not going to pay their outstanding Council Tax until all the other people of the GOGODALA area had paid theirs. The stupidity of this

(8)

23

of the WAWOI river region also have a similar weapon but it is called a WARIPIAPI. According to an aged male of KEWA village this type of club head is only used by GOGODALA and KANURA people. The actual specimen obtained is supposed to be three generations old. This club head has been passed down through the one family for these three generations. Where actually the stone came from nobody



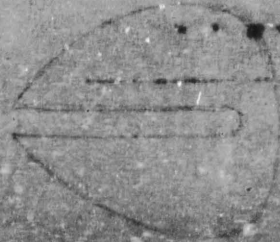
FIG 1

FIG 1:

DIAMETER SINS  
DIAMETER OF HOSE  
1 IN.

FIG 2:

DEPTH 1 3/4 INS.



called a SEDEMA;

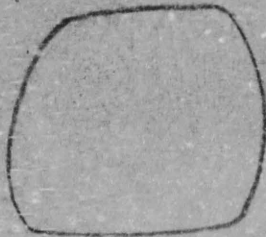
FIG 1:

LENGTH: 3 1/4 INS.  
WIDTH: 2 3/4 INS.  
WIDTH OF SLOT: 2/5 IN.

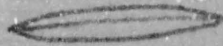
ONE SIDE CONVEX  
OTHER SIDE CONCAVE.

this tool is

FIG 3.

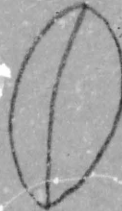


FRONT VIEW.  
LENGTH 1 1/5 INS  
WIDTH 1 1/2 IN AT  
WIDEST SPOT.



CUTTING  
EDGE.

LENGTH OF  
CUTTING EDGE 1 3/10 INS  
WIDTH 2/5 IN.



SIDE VIEW.  
LENGTH 1 1/4 IN  
WIDTH 1/2 IN

3

similar weapon but it is  
made of KEWA village  
GOGODALA and FAMURA people.  
It is said to be three generations  
old through the one family for  
the stone came from nobody

FIG 1:  
DIAMETER 5/16 IN.  
DIAMETER OF HOLE  
1 IN.

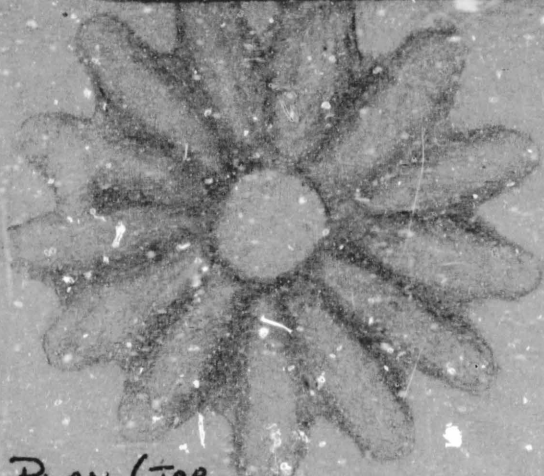
FIG 2:  
DEPTH 1 3/4 IN.

(44) A rose piece made of shell called a SEDENA:

FIG 1:  
LENGTH: 3 1/4 IN.  
WIDTH: 2 3/4 IN.  
WIDTH OF SLIT: 2/5 IN.

This tool is

FIG 2



PHAN (TOP VIEW)



SIDE VIEW

similar

TYPE OVER

5444 (195)

INS.  
HOLE

INS.

INS.

INS.  
2 3/4 INS.

WIDTH OF SLIT: 2/5 IN.



This tool is

CENSUS: During this Patrol the census for the GOGODALA West Census Division was revised. Census statistics are attached to this report.

A new village has been established at WASAPEA. This village consists mainly of nomadic KAMURA people from the KAWOI river region. They are at present in the process of constructing family houses at the WASAPEA village site. It is expected that more KAMURA people will settle at WASAPEA during the year.

COUNCIL TAX:

In this Division there are 296 Council Tax defaulters. At the time of the Patrol some of the defaulters offered to pay their tax to the Officer Conducting the Patrol. This money to the amount of \$161.00 has been acquitted at the Council Chambers and receipts have been written out.

There was no really good reason given to the Patrol by the defaulters for their non payment of Council Tax. The main reason for non payment of tax seems to come from laziness. The people just cannot be bothered finding \$6.50 and paying the tax. The lack of money or able to find such money was not an excuse put forward by defaulters.

The people were advised of their obligations as citizens and were also advised of the pertinent sections of the Local Government Ordinance concerning Council Tax Rules.

The people of MAKAPA village informed the Patrol that they were not going to pay their outstanding Council Tax until all the other people of the GOGODALA area had paid theirs. The stupidity of this

One possible case of incest was discovered at ALL village. The person concerned had been charged previously for incestuous act with his daughter. He now has three children by his daughter. The last act eventuated in the third child.

One land dispute concerning ISAGO and BISI Villages was brought to the Patrol's attention. This matter has been referred to the GOGODALA Council's Demarcation Committee.

REST HOUSES:

Rest Houses of a good standard are to be found in all the villages except MANA and IKE.

HEALTH:

The health of the people of this Census Division seemed good. Few tropical ulcers and grills sufferers were noticed. Numerous small children seemed to be suffering from the common cold. The Patrol was accompanied by Miss V. ANDREWS to the villages of KEWA, ABIBA, IOU, IKE and TAL. Miss ANDREWS made a leprosy check of all people from the abovementioned villages. Miss ANDREWS is a nurse from KAPODA Hansenide Colony.

There are four council constructed and owned aid Posts in the Division. They are to be found at ALL, ISAGO, KEWA and ABIBA villages. All are in a state of disrepair. The Aid Post at ALL village requires a new tank stand and steps. Also a repaint would enhance its appearance. The tank at the ISAGO Aid Post requires repairing and the Aid Post itself a coat of paint. The Aid Post at KEWA village requires a new tank stand and a repaint. The ABIBA Aid Post could also do with a coat of paint.

The condition of these Aid Posts will be brought to the attention of the GOGODALA Council's Finance Committee.

All these establishments seem to be operating efficiently.

EDUCATION:

A request was made by the people of ALL village that a school be established at their village. They are willing to construct the school if the Mission is willing to provide a teacher. Their request is a legitimate one as their village is seven hours by speedboat from the nearest school, AWABA U.F.M. This will be brought to the attention of the Mission under separate cover.

The only schools in this Division are at AWABA and BALIMO. There is an U.F.M. school at BALIMO and also a government Primary 'T' School. The U.F.M. operates a Primary 'T' School, High School and Teacher Training establishment at AWABA.

MISSION:

The Unevangelized Fields Mission is the only denomination in this Division. They have Mission stations at AWABA and BALIMO. A new U.F. Mission station is under construction at KAWITO situated between AKREA and KO'ALE villages on the ARANLA river.

The Mission takes the credit for the brunt of the education and health services in this Division.

ANTHROPOLOGICAL:

Three items of anthropological interest were collected by the Patrol. All items were procured at KEWA village.

(1) The head of a fighting club; The head of this club is made of stone - this is rather unique as there is no stone in this area. The GOGODALA name for this item is SAIGE. The RAMURA people

of this attitude was pointed out to those concerned.

OFFICER ACCOMPANYING THE PATROL:

Mr. R.M. DIAMOND, Cadet Patrol Officer, accompanied the patrol from the 12/5/68 to 18/5/68. He acquitted himself well. He showed interest in field work and was extremely helpful from the outset. In actual fact it was Mr. DIAMOND who introduced the Officer Conducting the Patrol to the intricacies of the A 570 portable wireless station.

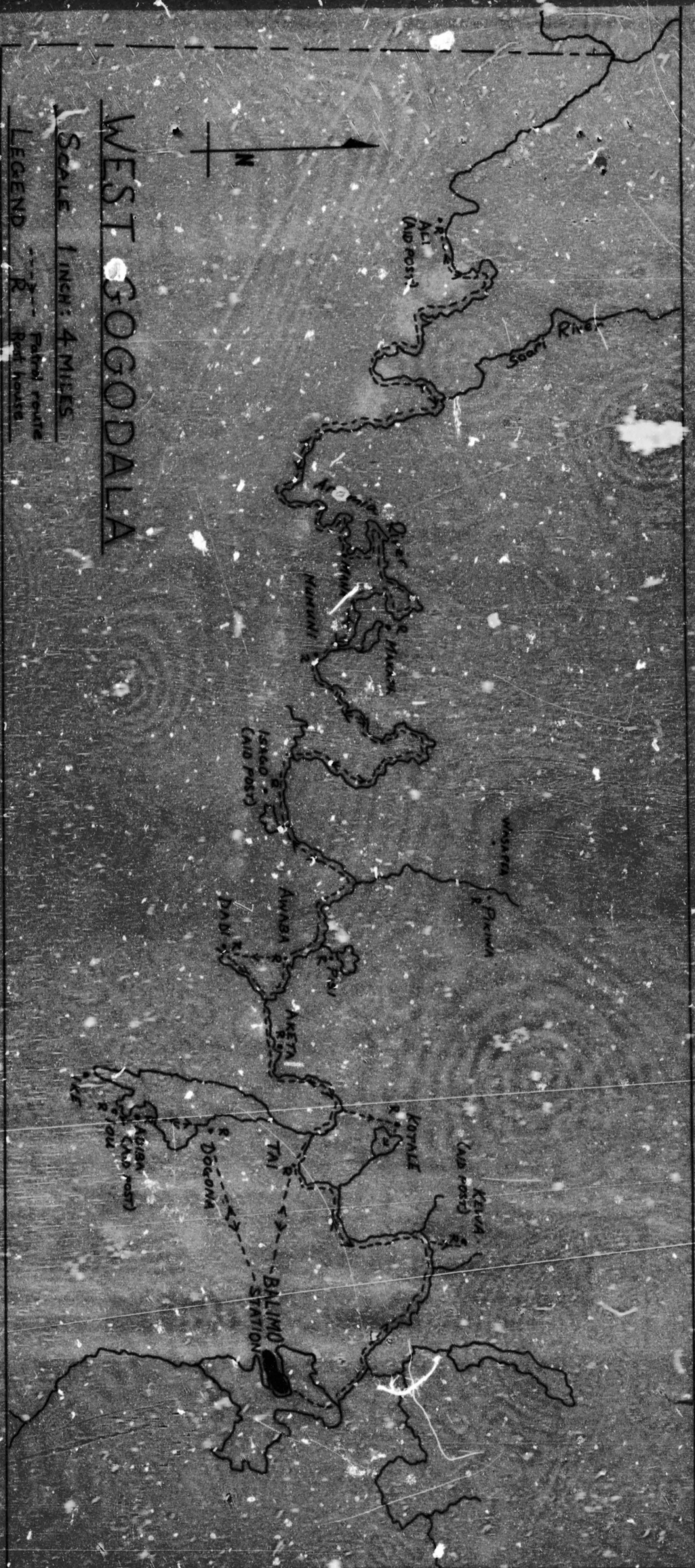
CONCLUSION:

The greatest difficulty encountered by the Patrol was one of communication with the local people. The Officer Conducting the Patrol was not acquainted with Police Motu. An interpreter was used to whom the Officer Conducting the Patrol spoke in Pidgin English which had then to be translated into the GOCODALA language. This caused misunderstandings and complications in many instances.

Though the Patrol was handicapped by the Papuan lingua franca the basic aims of the Patrol were achieved.



ASSISTANT DISTRICT OFFICER.



# WEST GOGODALA

SCALE 1 INCH: 4 MILES

LEGEND  
 - - - Patrol route  
 R Rail route

1 2 3 4 5 6 7 8 9 10 11 12