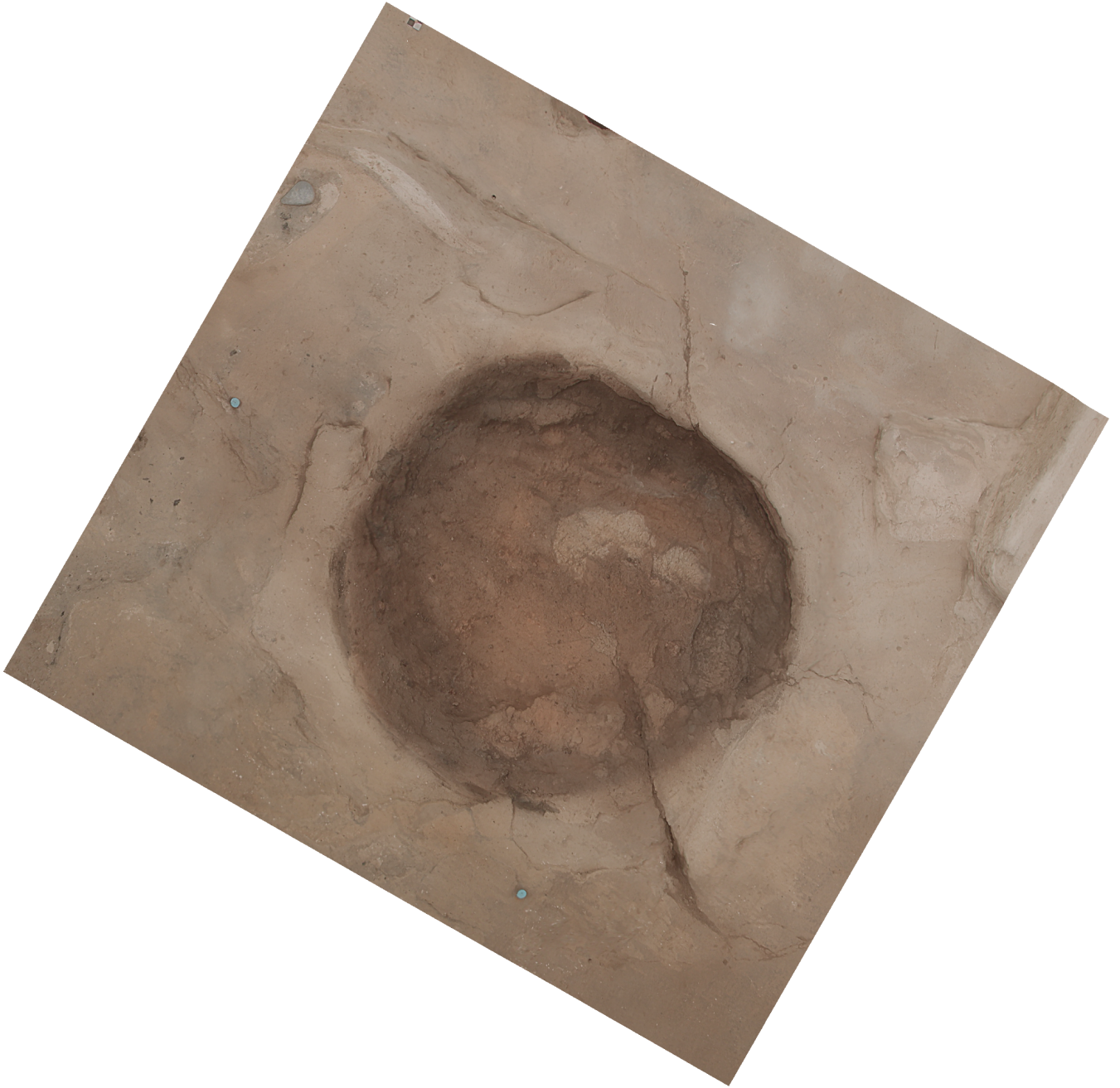


# Agisoft PhotoScan

Processing Report  
17 November 2014



# Survey Data

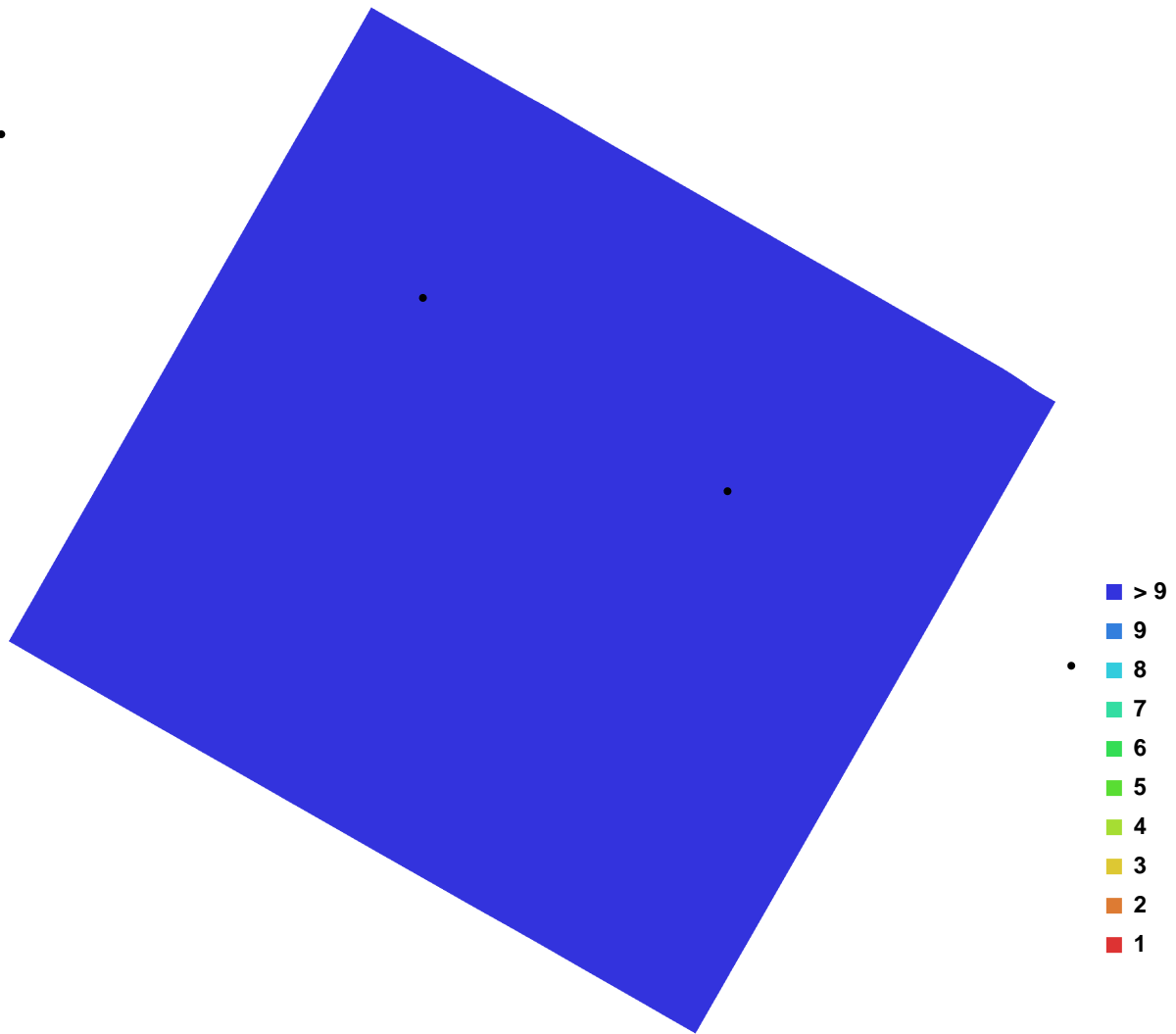


Fig. 1. Camera locations and image overlap.

Number of images:	20	Camera stations:	20
Flying altitude:	4.52964 m	Tie-points:	69484
Ground resolution:	0.000588016 m/pix	Projections:	187408
Coverage area:	1.36878e-006 sq km	Error:	0.683021 pix

Camera Model	Resolution	Focal Length	Pixel Size	Precalibrated
Canon EOS 550D (15 mm)	5184 x 3456	15 mm	4.4036 x 4.4036 um	No

Table. 1. Cameras.

# Ground Control Points

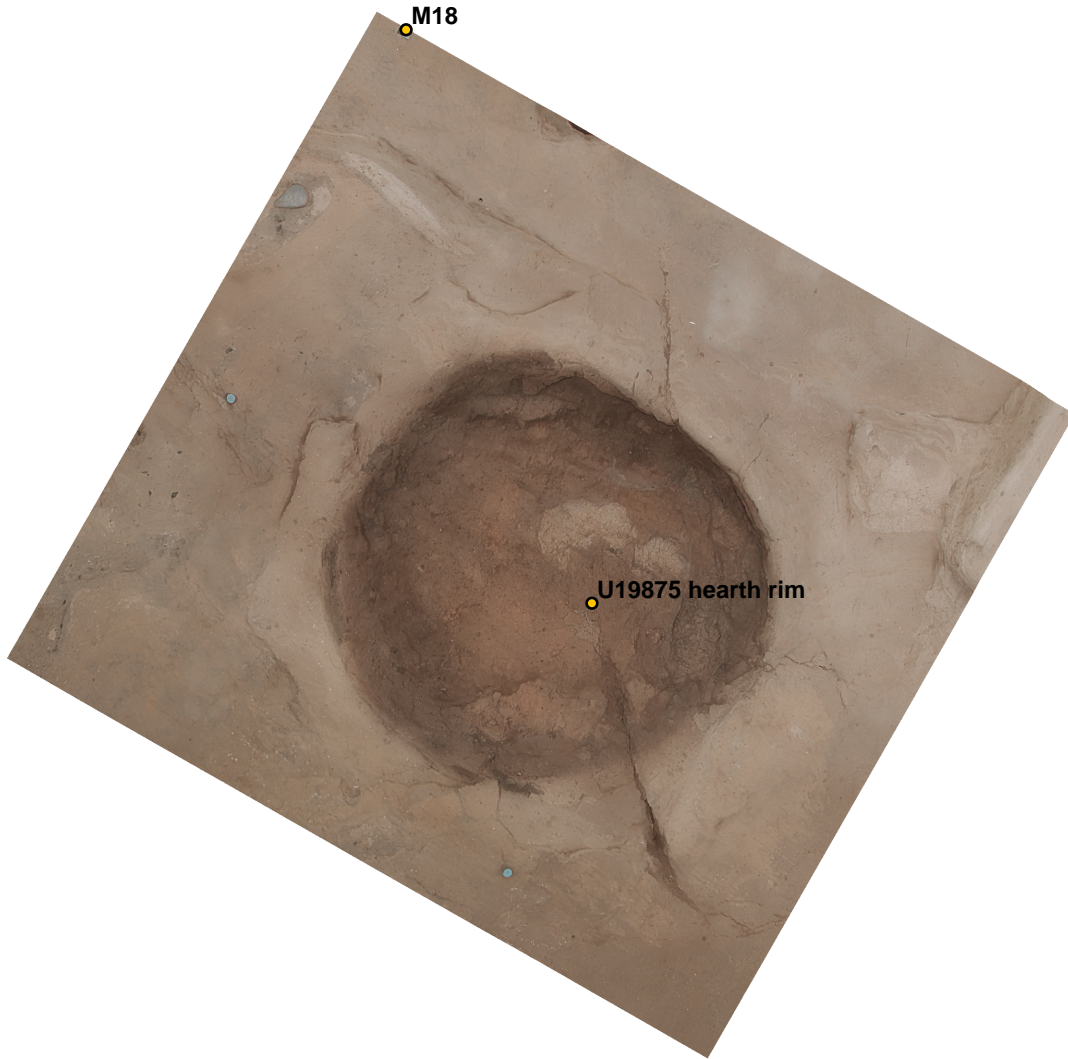


Fig. 2. GCP locations.

Label	X error (m)	Y error (m)	Z error (m)	Error (m)	Projections	Error (pix)
C10	-0.007546	0.004511	0.002206	0.009064	11	0.000063
C2	-0.000504	0.003752	-0.006804	0.007786	11	0.000073
C23	0.002434	0.008094	-0.004545	0.009597	12	0.000056
C27	-0.000094	-0.001279	-0.000466	0.001365	11	0.000068
M18	0.004952	-0.002995	0.004156	0.007125	16	0.000061
M7	0.001319	-0.011101	0.003381	0.011679	11	0.000058
<b>Total</b>	<b>0.003860</b>	<b>0.006242</b>	<b>0.004098</b>	<b>0.008405</b>	<b>72</b>	<b>0.000063</b>

Table. 2. Control points.

Label	X error (m)	Y error (m)	Z error (m)	Error (m)	Projections	Error (pix)
-------	-------------	-------------	-------------	-----------	-------------	-------------

<b>Label</b>	<b>X error (m)</b>	<b>Y error (m)</b>	<b>Z error (m)</b>	<b>Error (m)</b>	<b>Projections</b>	<b>Error (pix)</b>
U19875 hearth rim					20	0.000102
<b>Total</b>						

Table. 3. Check points.

# Digital Elevation Model

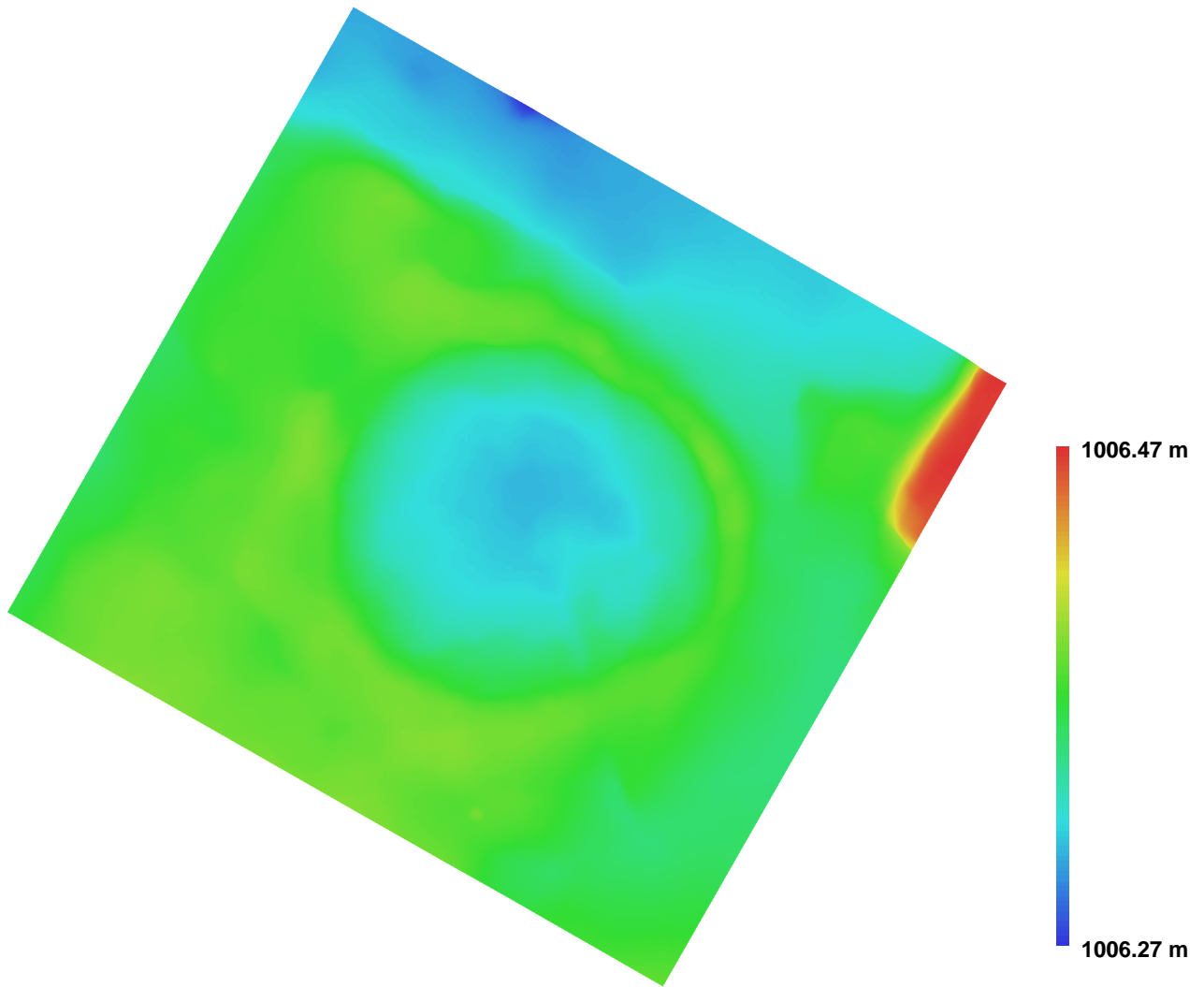


Fig. 3. Reconstructed digital elevation model.

Resolution: 0.00235206 m/pix  
Point density: 180760 points per sq m