

**REPORT AND INDEX OF
UNDERWAY MARINE GEOPHYSICAL DATA**

RAPA EXPEDITION

LEG 3
=====

R/V Thomas Washington

(Issued May 1991)

Easter Island (7 January 1991)
to
Easter Island (18 February 1991)

Chief Scientist - Peter Lonsdale (Scripps Institution)

Resident Marine Technician - Gene Pillard

Sea Beam/Underway Data Processor - Andra Bobbitt (MPL)

Post-Cruise Processing and Report Preparation by the
Geological Data Center, Scripps Institution of Oceanography
La Jolla, California 92093

Data Collection and Processing Funded by:
NSF Grant Number OCE89-18898

NOTE: This is an index of underway geophysical data edited
and processed after the completion of the cruise leg and is
intended primarily for informal use within the institution.
This document is not to be reproduced or distributed outside
Scripps without prior approval of the chief scientist or the
Geological Data Center, Scripps Institution of Oceanography,
La Jolla, California 92093.

GDC Cruise I.D.# 251

INFORMAL REPORT AND INDEX OF NAVIGATION AND UNDERWAY GEOPHYSICAL DATA

Processed by the Geological Data Center
Scripps Institution of Oceanography

Contents:

Index Chart - gives track of cruise leg, dates, ports, and mileage of each type of data collected.

Track Charts - annotated with dates and hour ticks.

Profiles - depth, magnetic anomaly and gravity free air anomaly vs. distance. Sections of track having subbottom profile (airgun or watergun) records have a wide black line along the bottom of the profile. Sections having Sea Beam are indicated by a narrow black line.

Sample Index - list of beginning and end times and positions of all underway records as well as all other samples and measurements (geology, biology, physical oceanography, etc.) collected on the cruise leg.

NOTE: One or more of the underway data types may not be collected on a given cruise leg.

For information on the availability and reproduction costs of data in the following forms, contact S. M. Smith, Curator, Geological Data Center, Scripps Institution of Oceanography, La Jolla, CA 92093-0223. Phone (619)534-2752. Fax (619)534-5306.

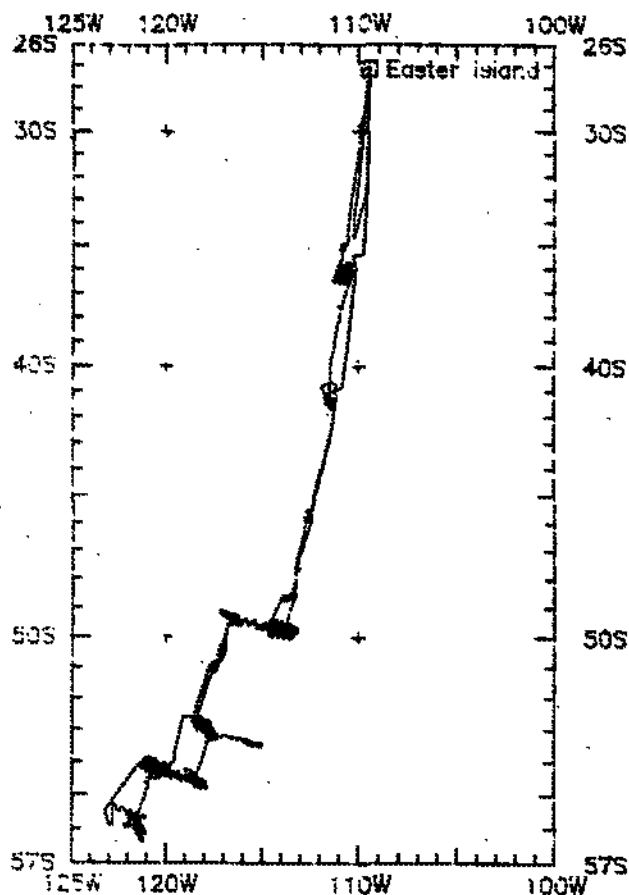
1. Navigation listing with times and positions of course and speed changes, fixes and drift velocity.
2. Depth compilation plots - compilation plots at the traditional scale of 4in/degree longitude (1:1,000,000) are no longer produced for Sea Beam cruises. Custom plots may be requested of vertical beam ($2\frac{2}{3}$ degree beam width) depths retrieved at one minute intervals of ship time.
3. Plots of depths, magnetics or gravity profiles along track - custom plots at various map and profile scales on Mercator projection may be requested.
4. Separate time series files of navigation, depth, gravity and magnetics as well as these data merged in the MGD77 Exchange format on magnetic tape.
5. Microfilm or Xerox copies of:
 - a. Echosounder records - 12 and 3.5 kHz frequency
 - b. Subbottom profiler records
 - c. Magnetometer records
 - d. Underway data log book

SIO Sea Beam Data Information

The following forms are available, subject to approval of the cruise leg chief scientist:

- 1) Archive copy of contour swath books generated in real time on board ship available for inspection at the data center.
- 2) Microfilm (35mm flowfilm) containing swath books plus, for some cruises, the Sea Beam monitor record and navigation list.
- 3) Sea Beam merged tapes - Sea Beam data merged with navigation. (Navigation is edited to the extent that DR courses and speeds are edited and poor fixes are removed after inspection of drift vectors between fix pairs. No editing is done on the basis of adjusting to overlapping Sea Beam swaths.)
- 4) Archive contour plots - 16"/degree chart scale, with contour interval nominally 50m, are generated for all transit lines. Some survey areas are plotted at appropriate scales as well. Available for inspection at data center; additional copies may be generated from plot files stored on tape.
- 5) Custom generated plots of Sea Beam swaths on Mercator projection in four colors at variable plot scales and contour intervals. There are provisions to adjust positions of individual track lines and to edit out beams (bad data or overlapping data on inside of turns).

Revised October 1988



RAPA EXPEDITION LEG 3

CHIEF SCIENTIST:

Peter Lonsdale (Scripps Institution)

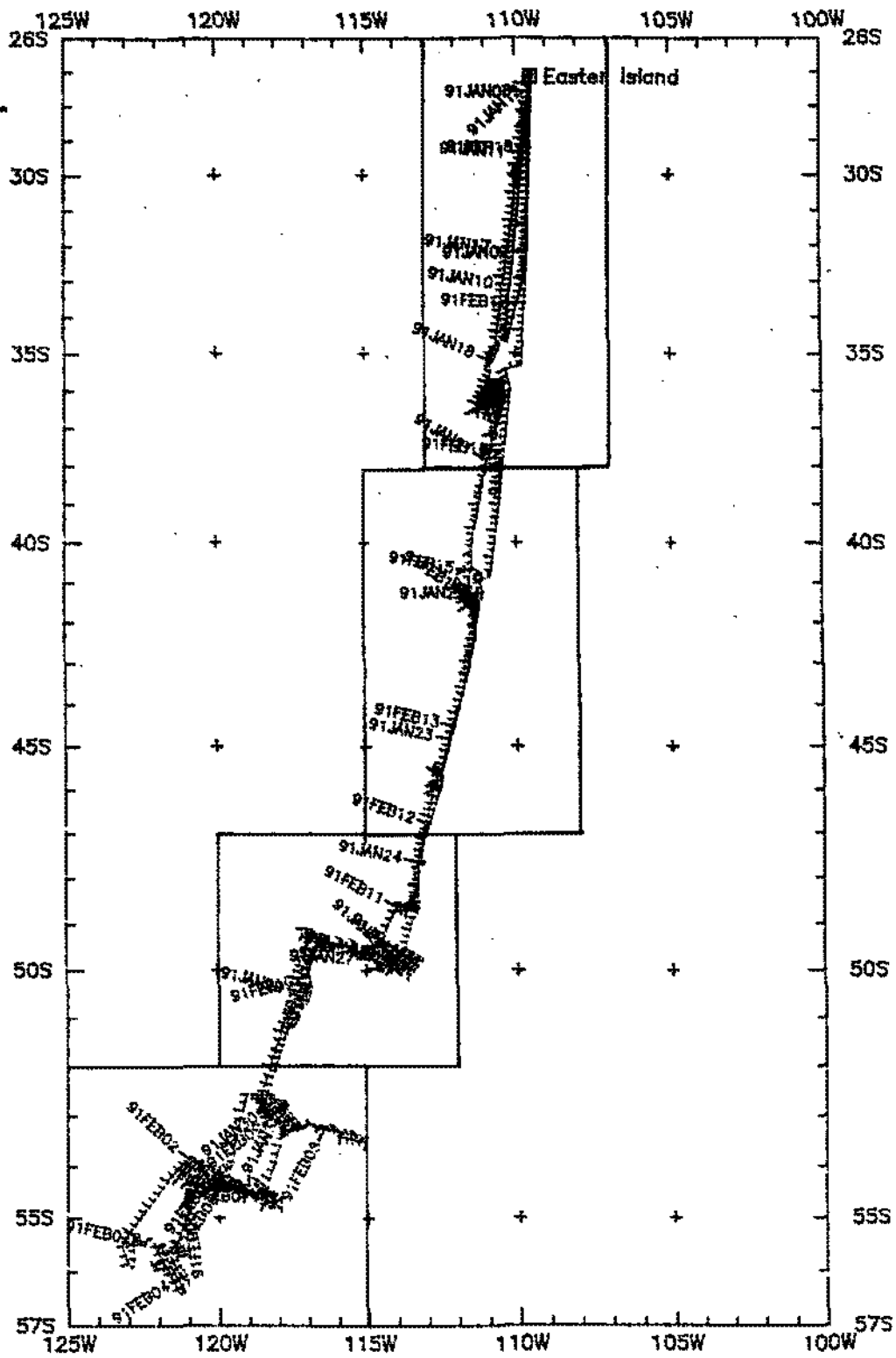
PORTS: Easter Island - Easter Island

DATES: 7 January - 18 February 1991

SHIP: R/V T. Washington

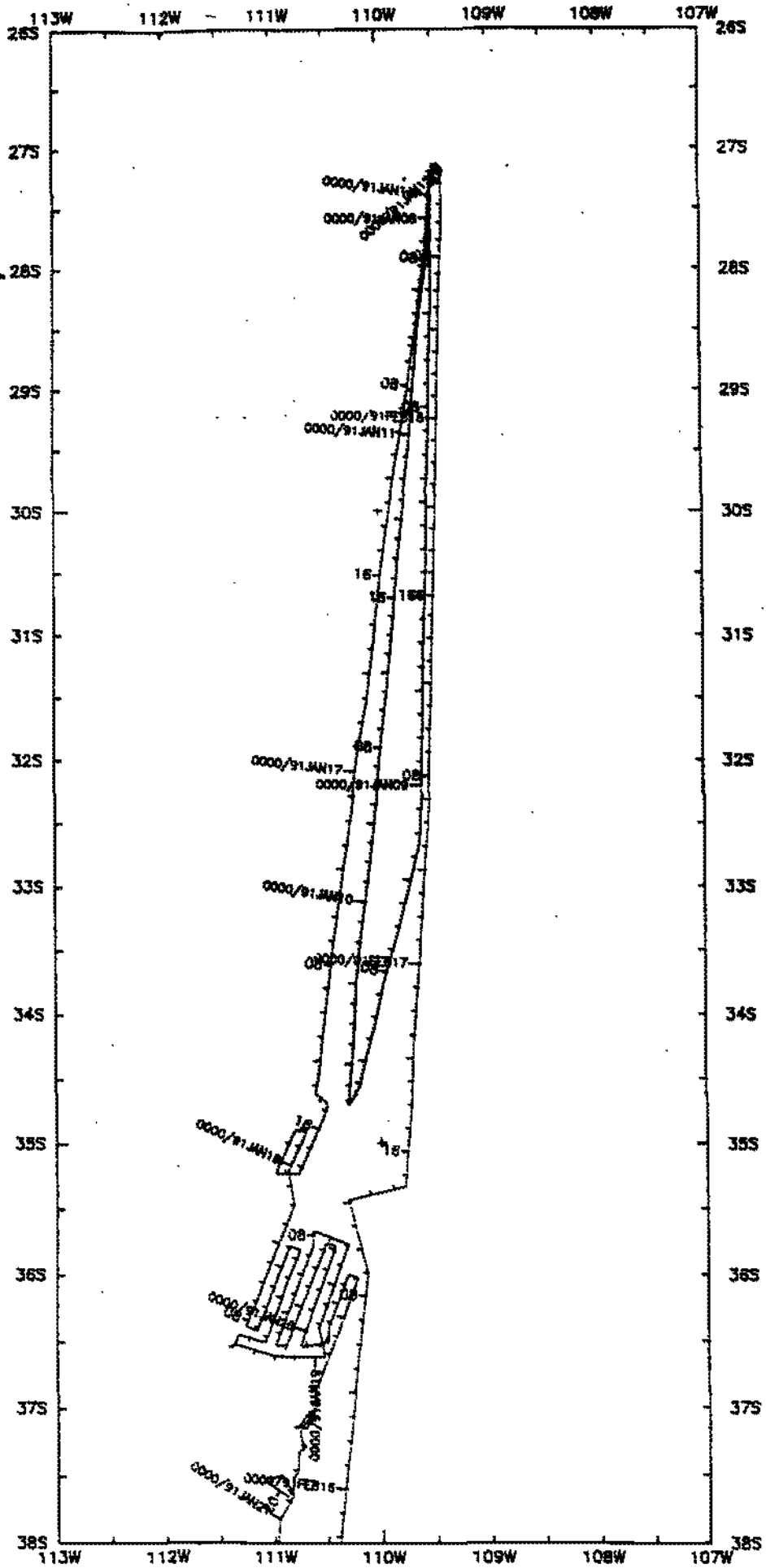
TOTAL MILEAGE OF UNDERWAY DATA COLLECTED

- 1) Cruise - 8502 miles
- 2) Bathymetry - 8349 miles
- 3) Magnetics - 7392 miles
- 4) Seismic Reflection - none collected
- 5) Gravity - 8502 miles
- 6) Sea Beam - 8349 miles
- 7) Sea Marc - 3550 miles

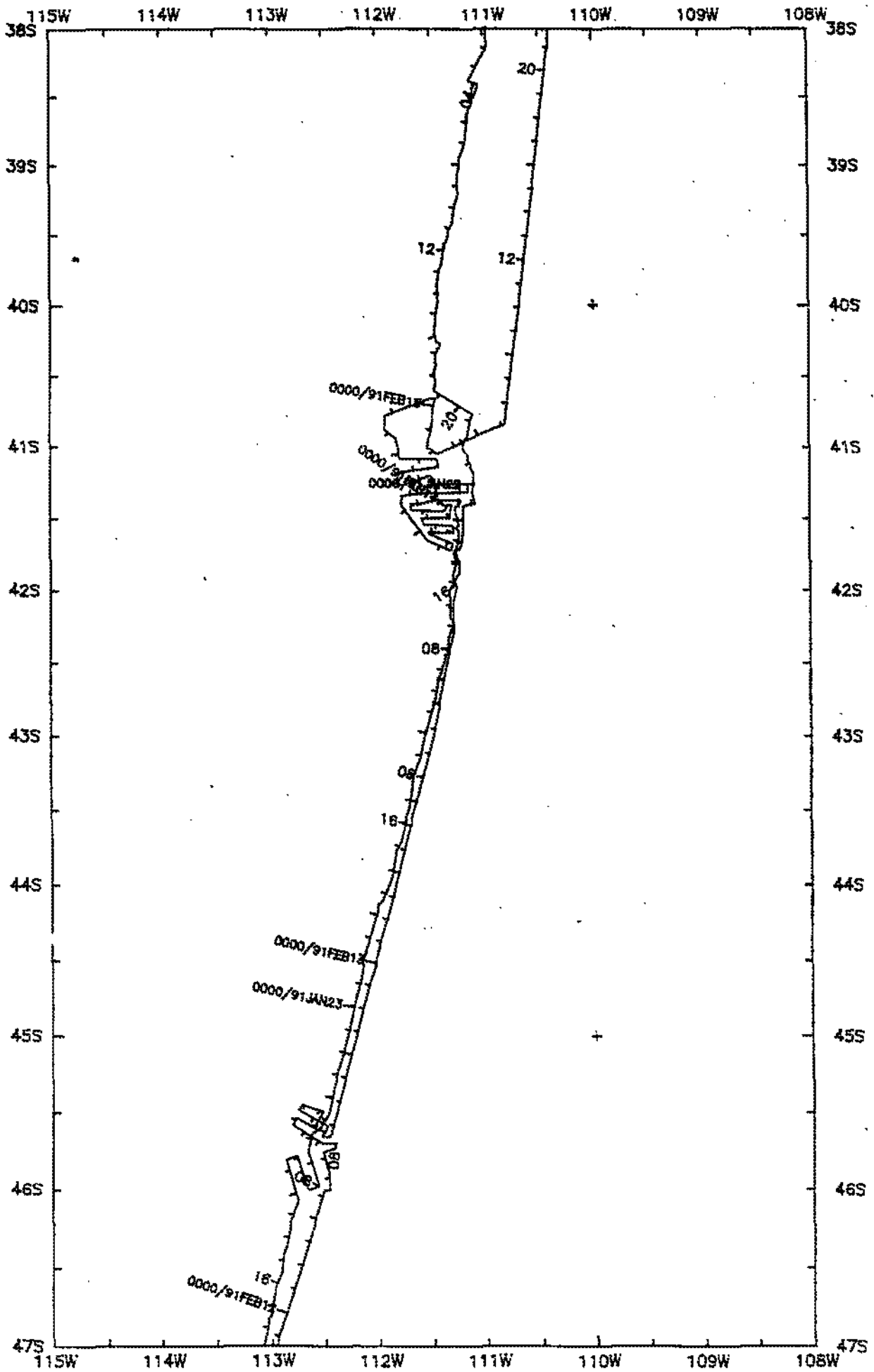


RAPA LEG 3 (RAPAO3WT)

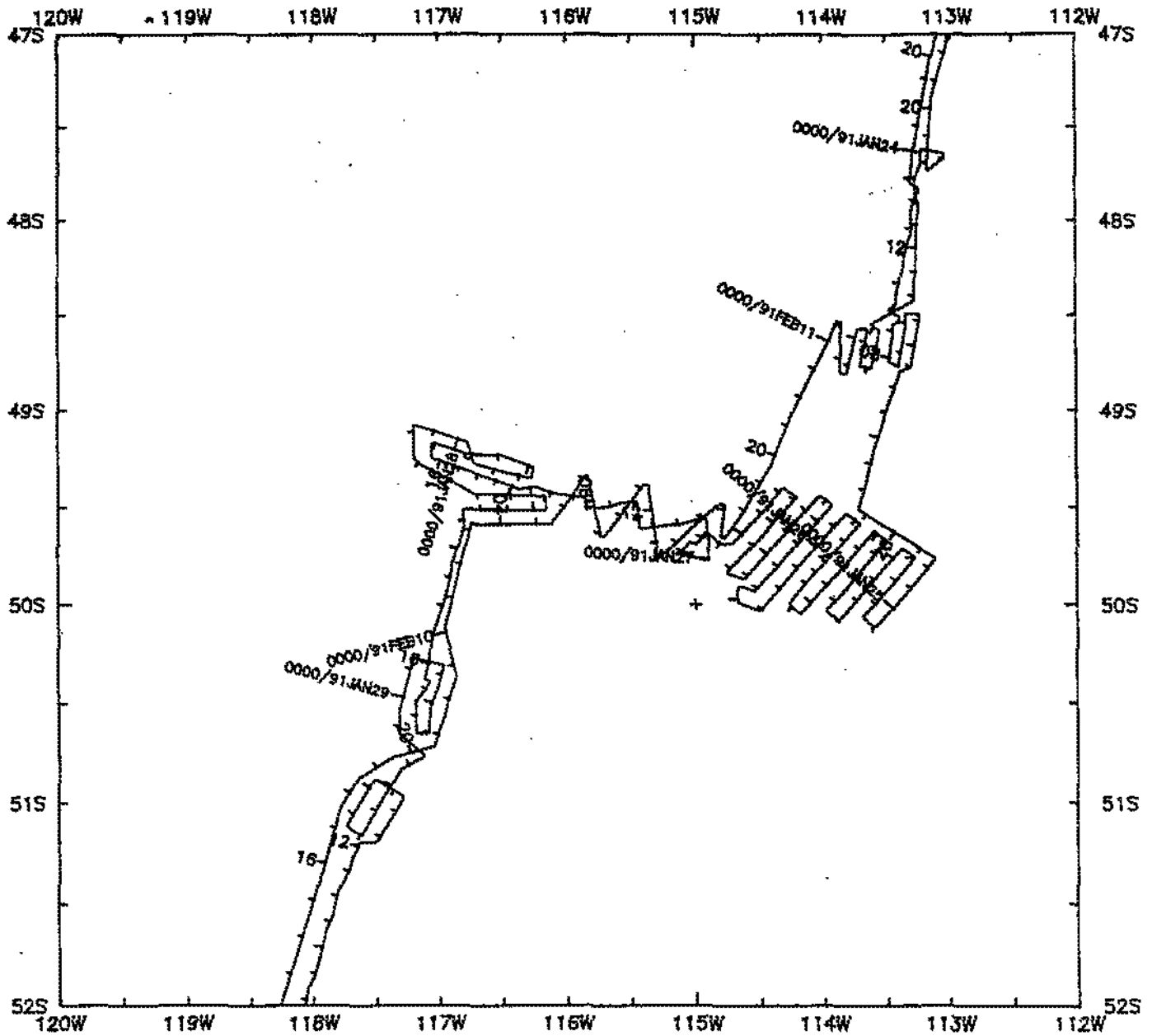
*



DATA LOG 3 (RADARSWT)

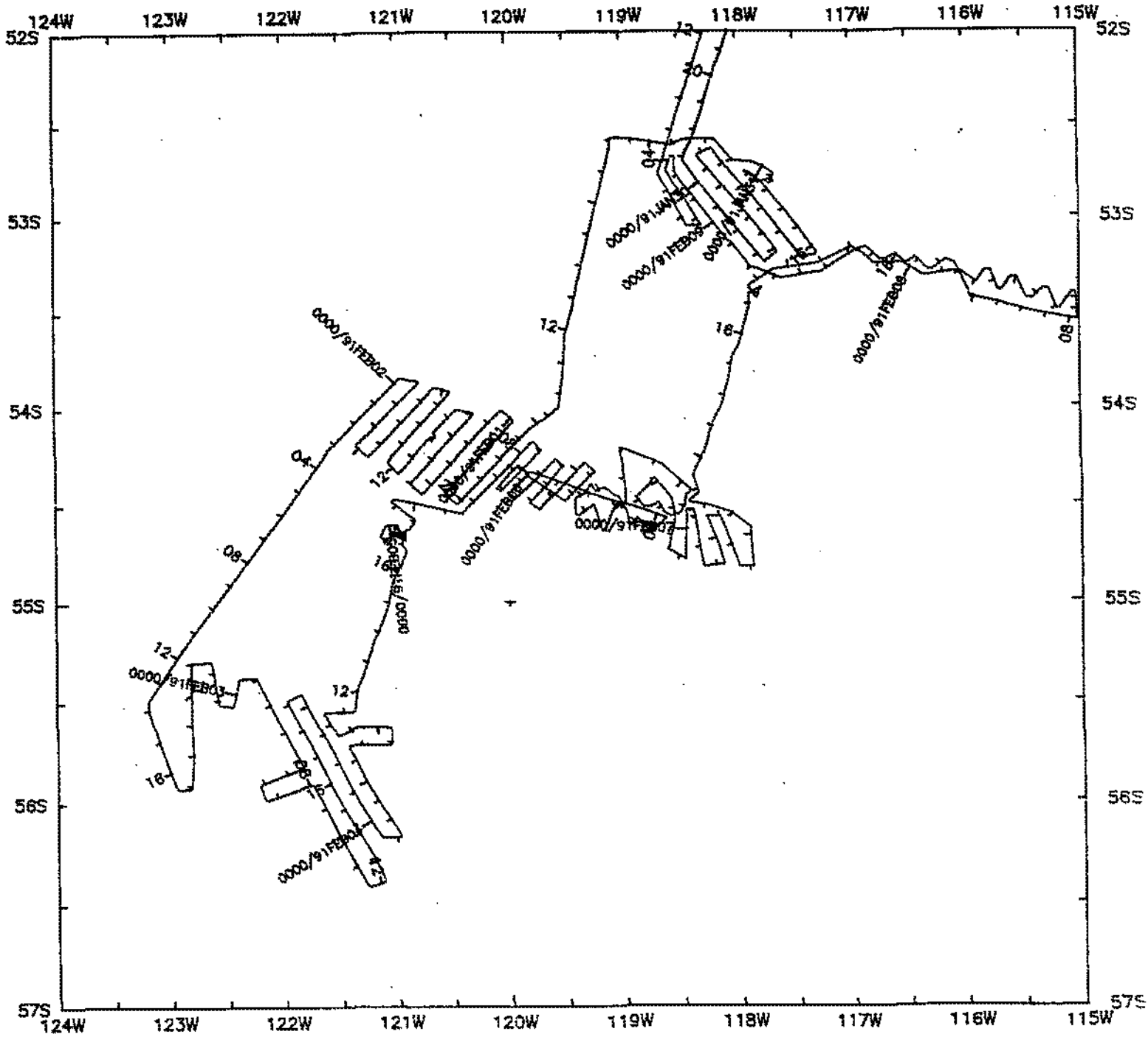


RAPA FIG 3 (RAPAO.TWT)



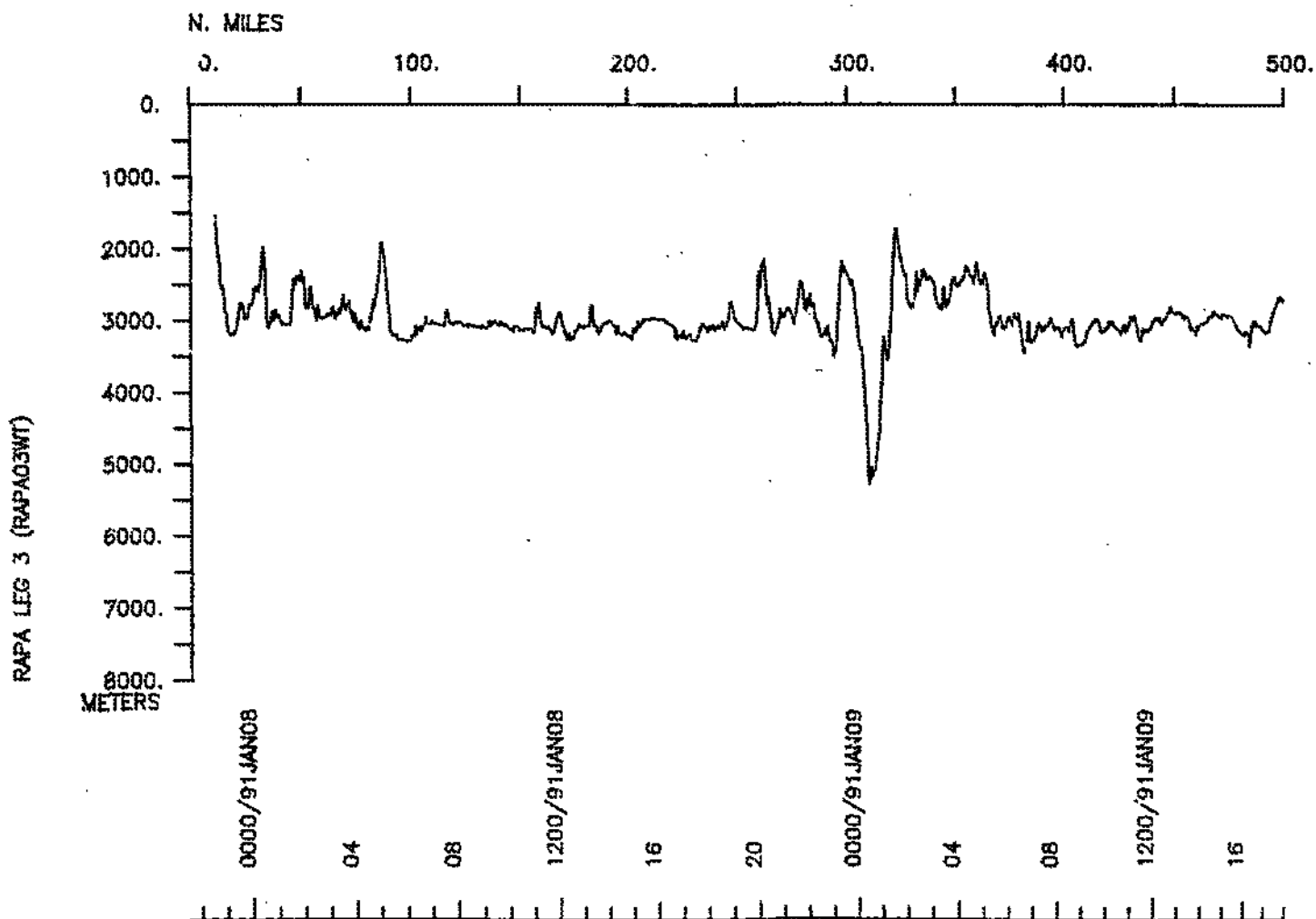
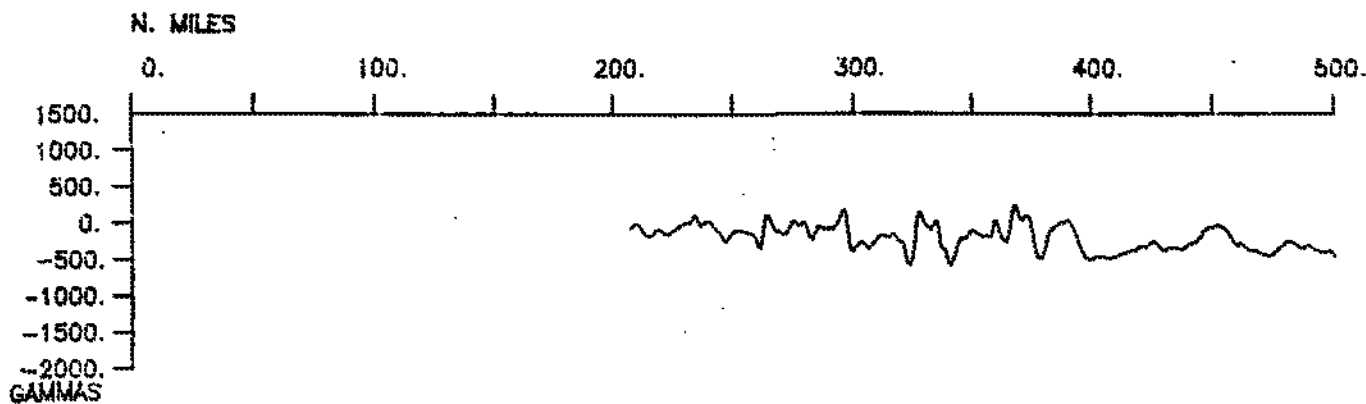
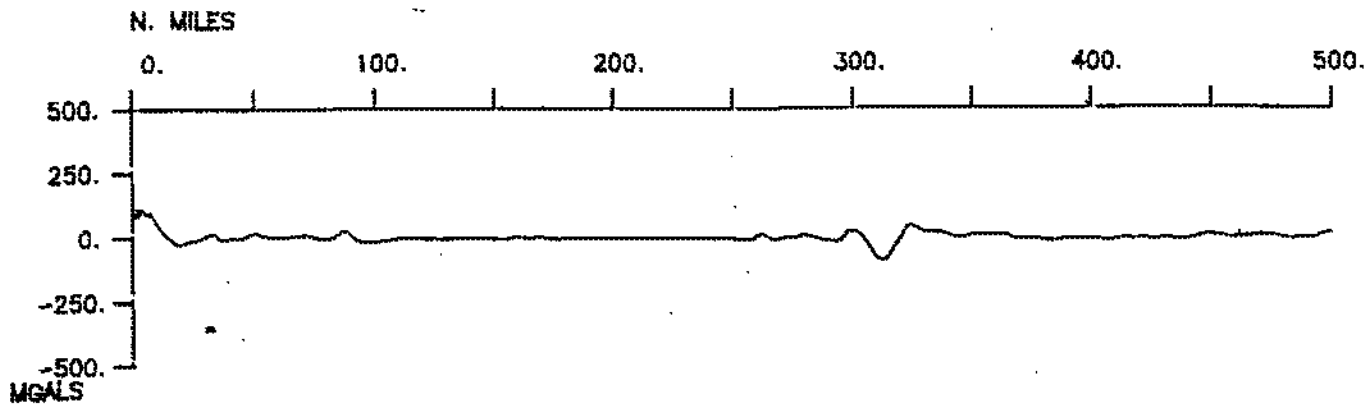
RAPA LEG 3 (RAPA03WT)
 Area includes surveys 06-10 & 14-17

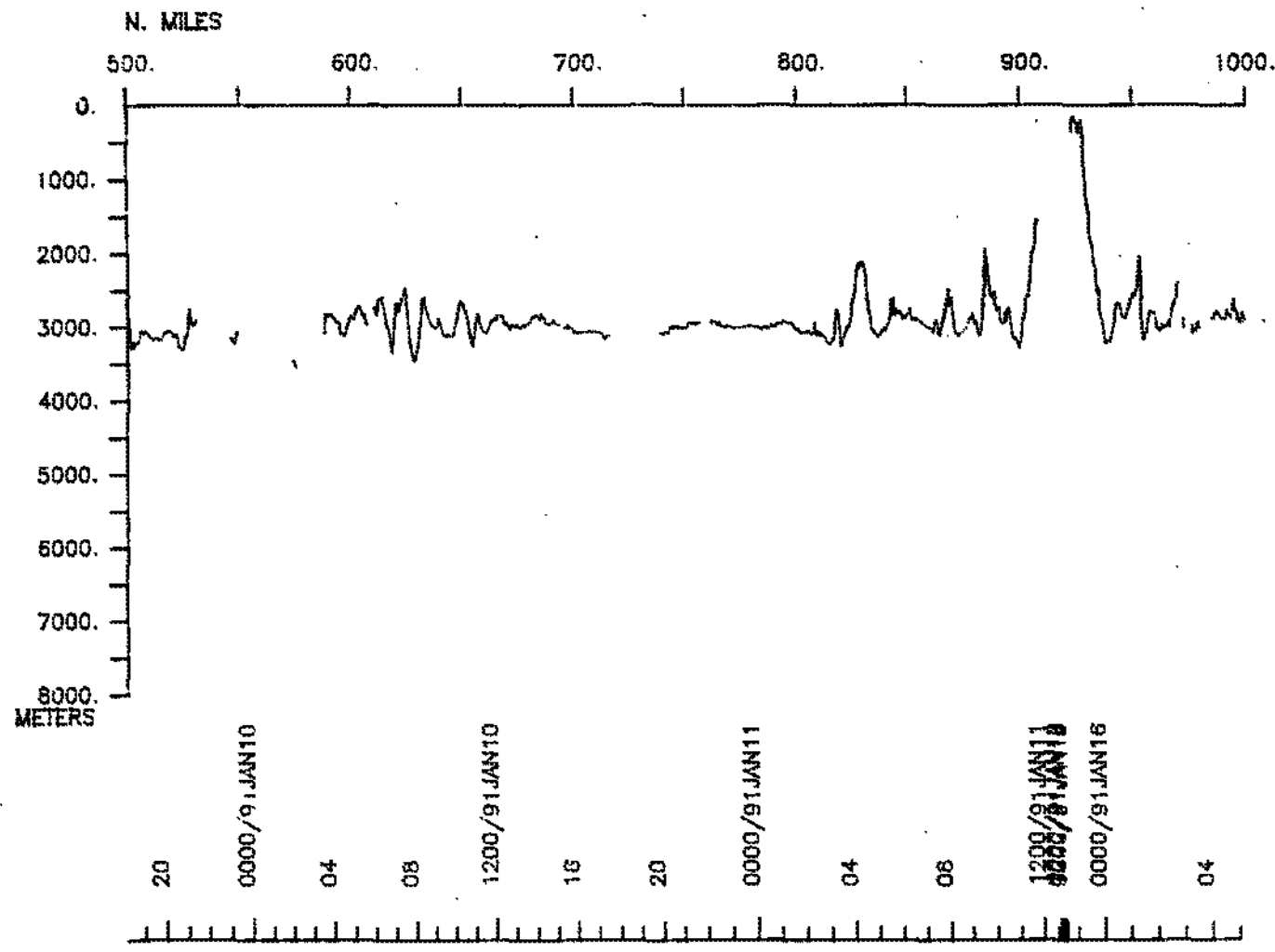
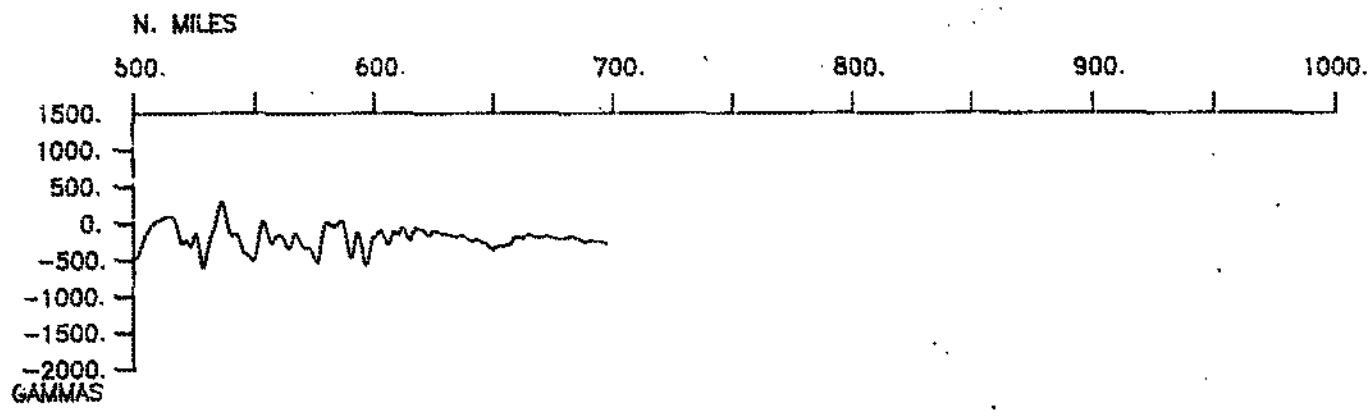
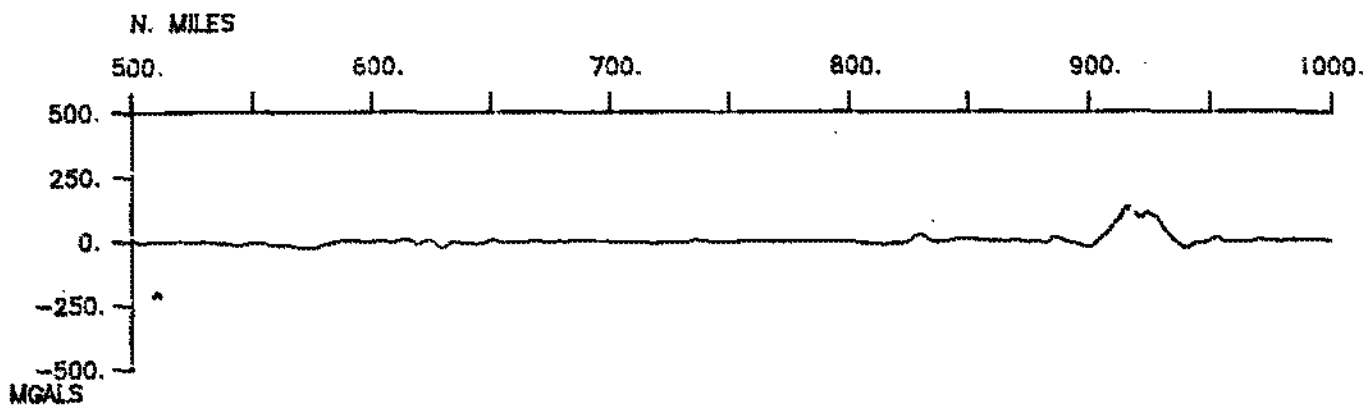
*



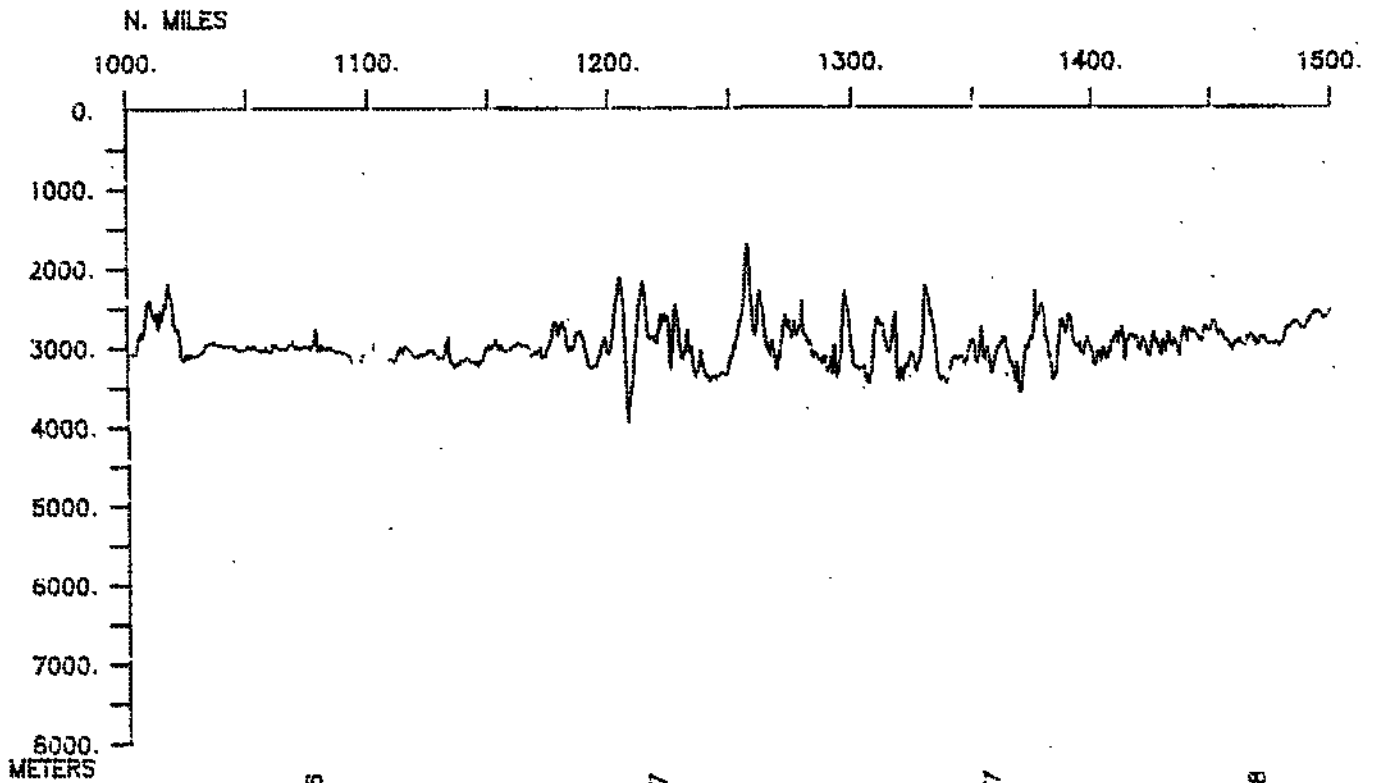
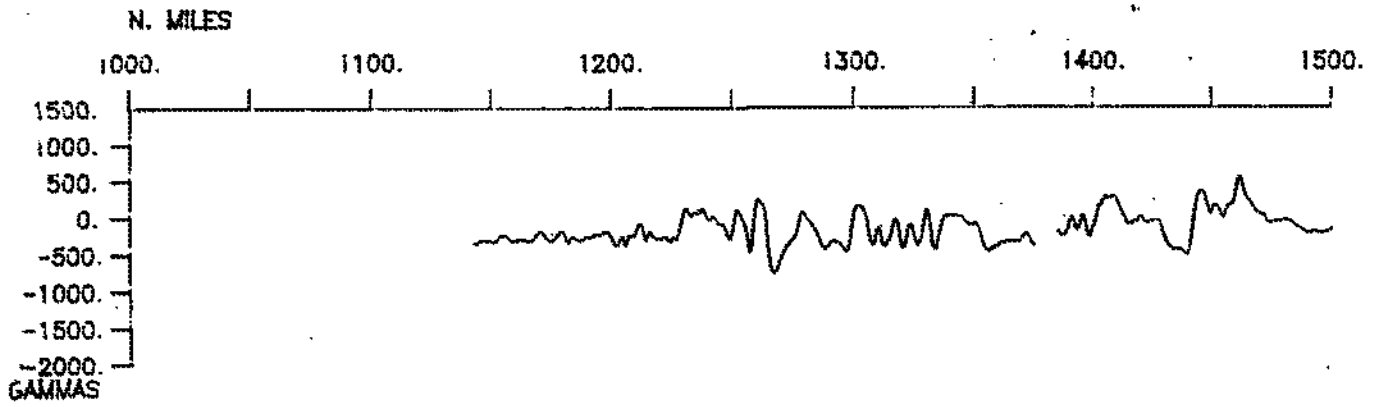
RAPA LEG 3 (RAPA03WT)
 Area includes surveys 11-13

*





RAPA LEG 3 (RAPAC3WT)



RAPA LEG 3 (RAPAO3WIT)

08

1200/91 JAN 16

16

20

0000/91 JAN 17

04

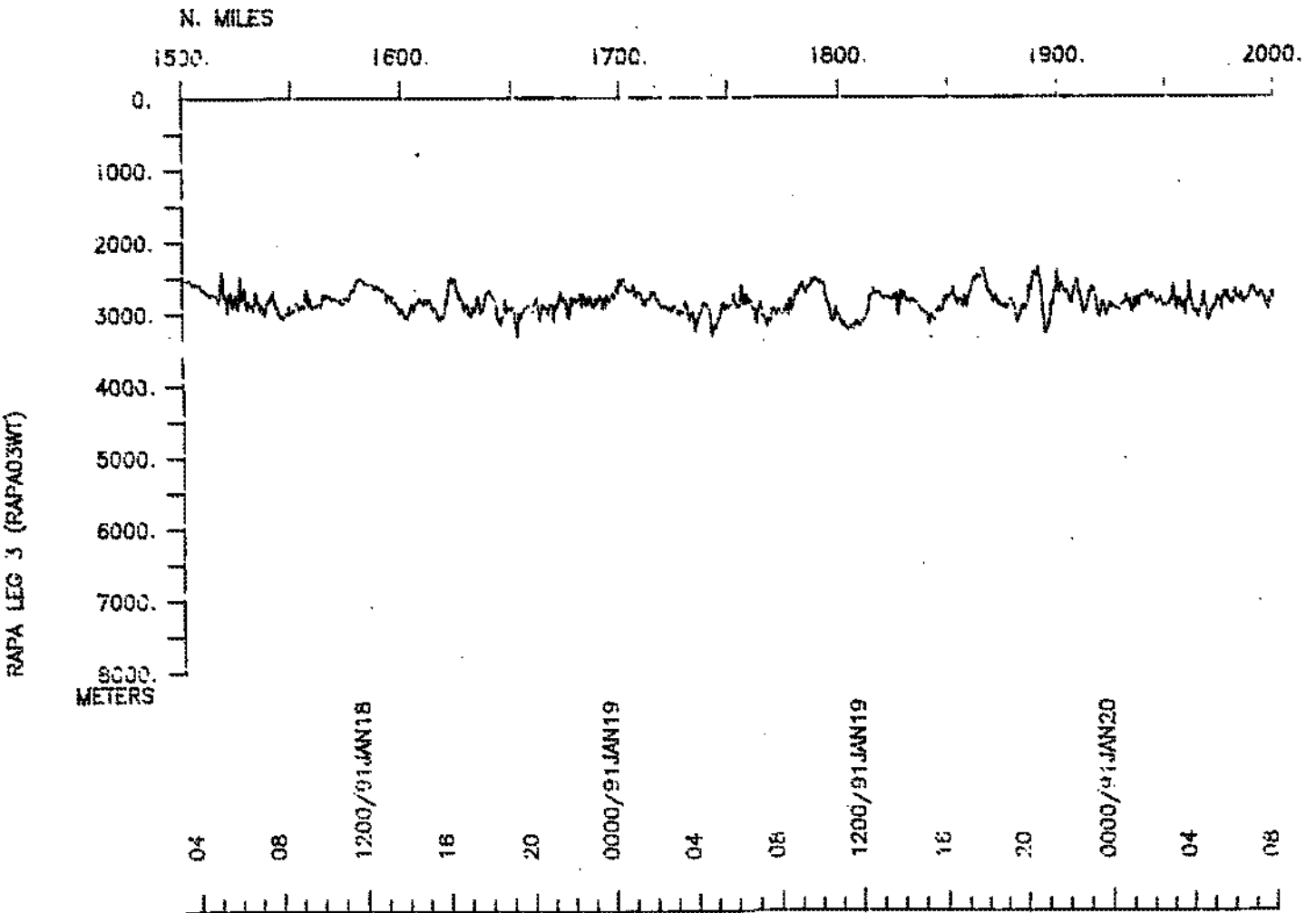
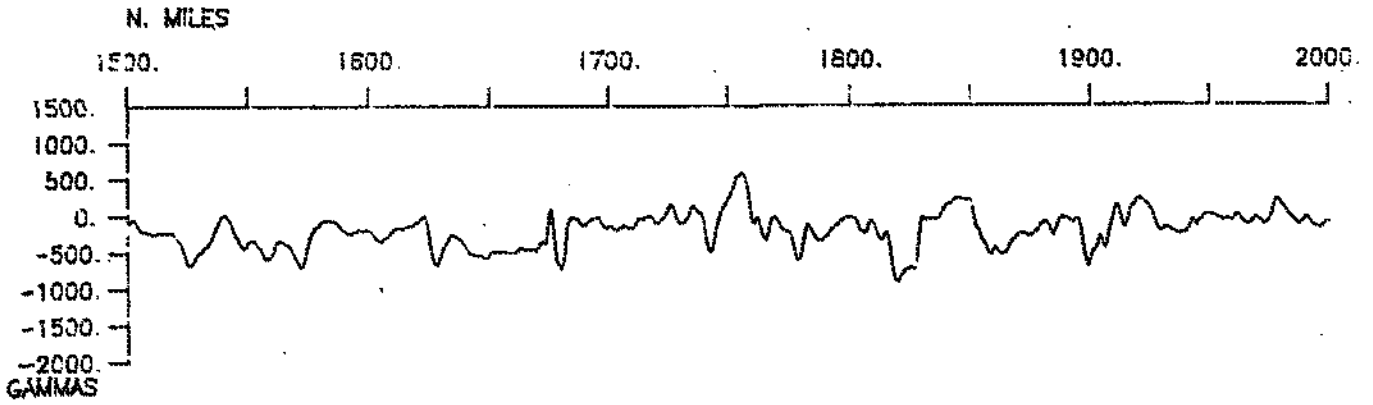
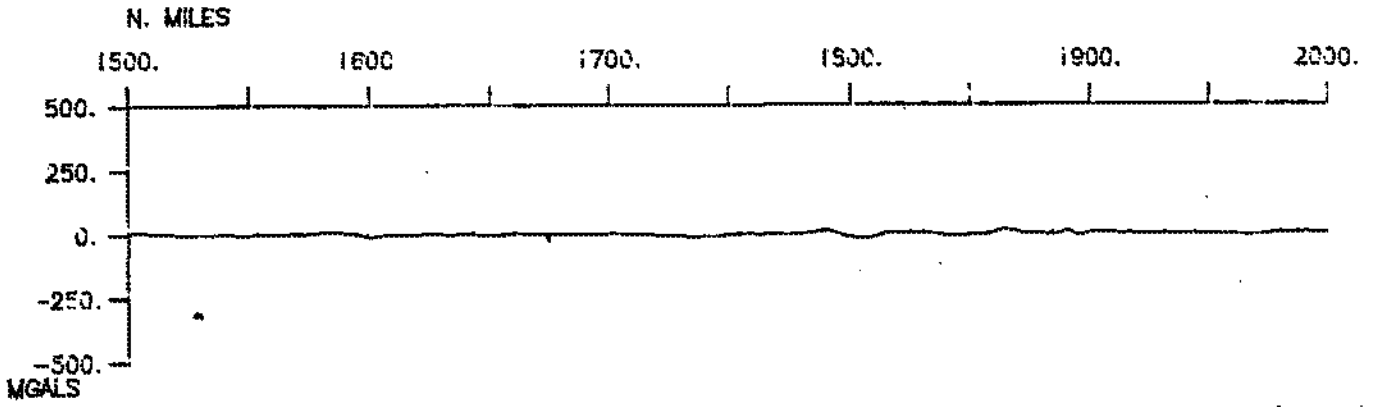
08

1200/91 JAN 17

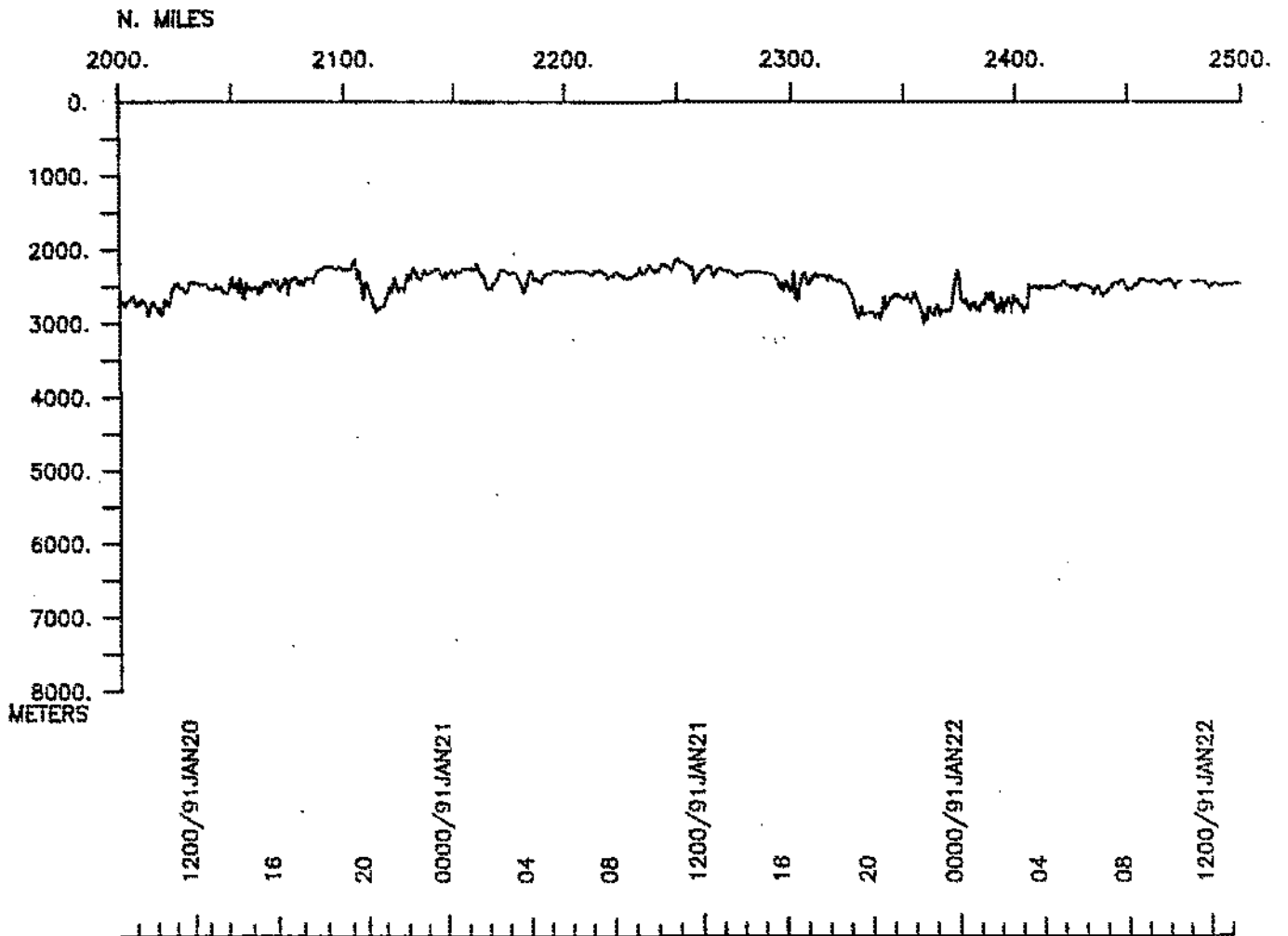
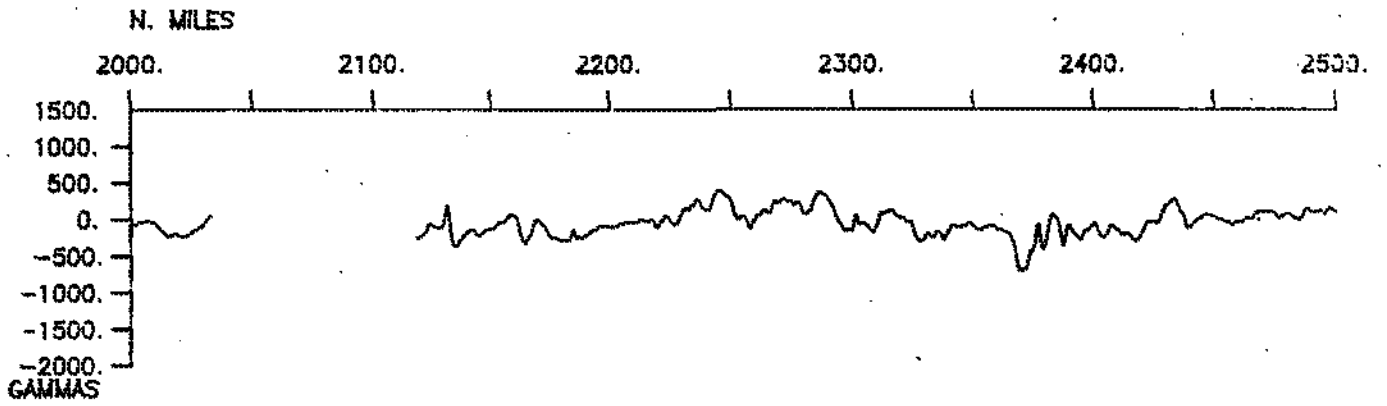
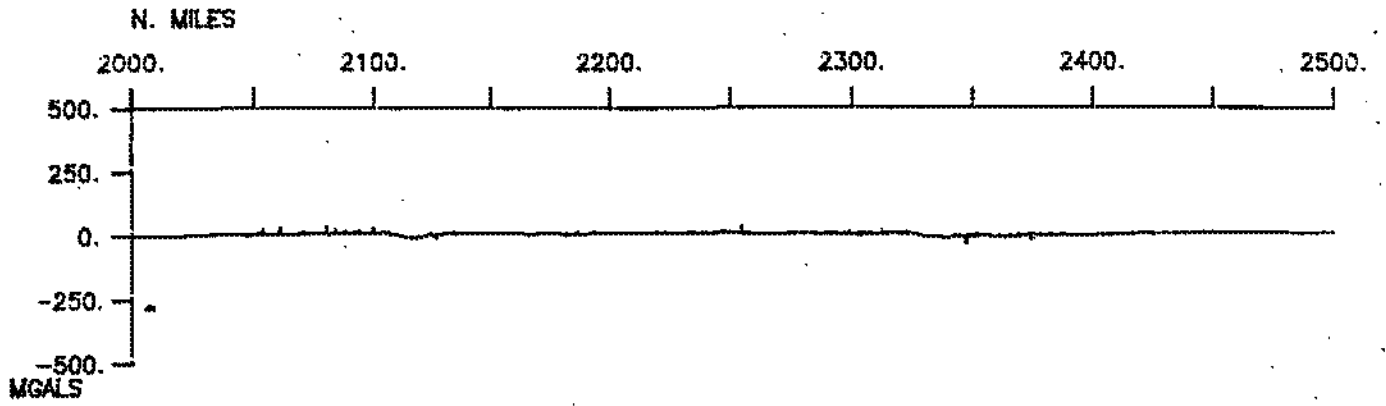
16

20

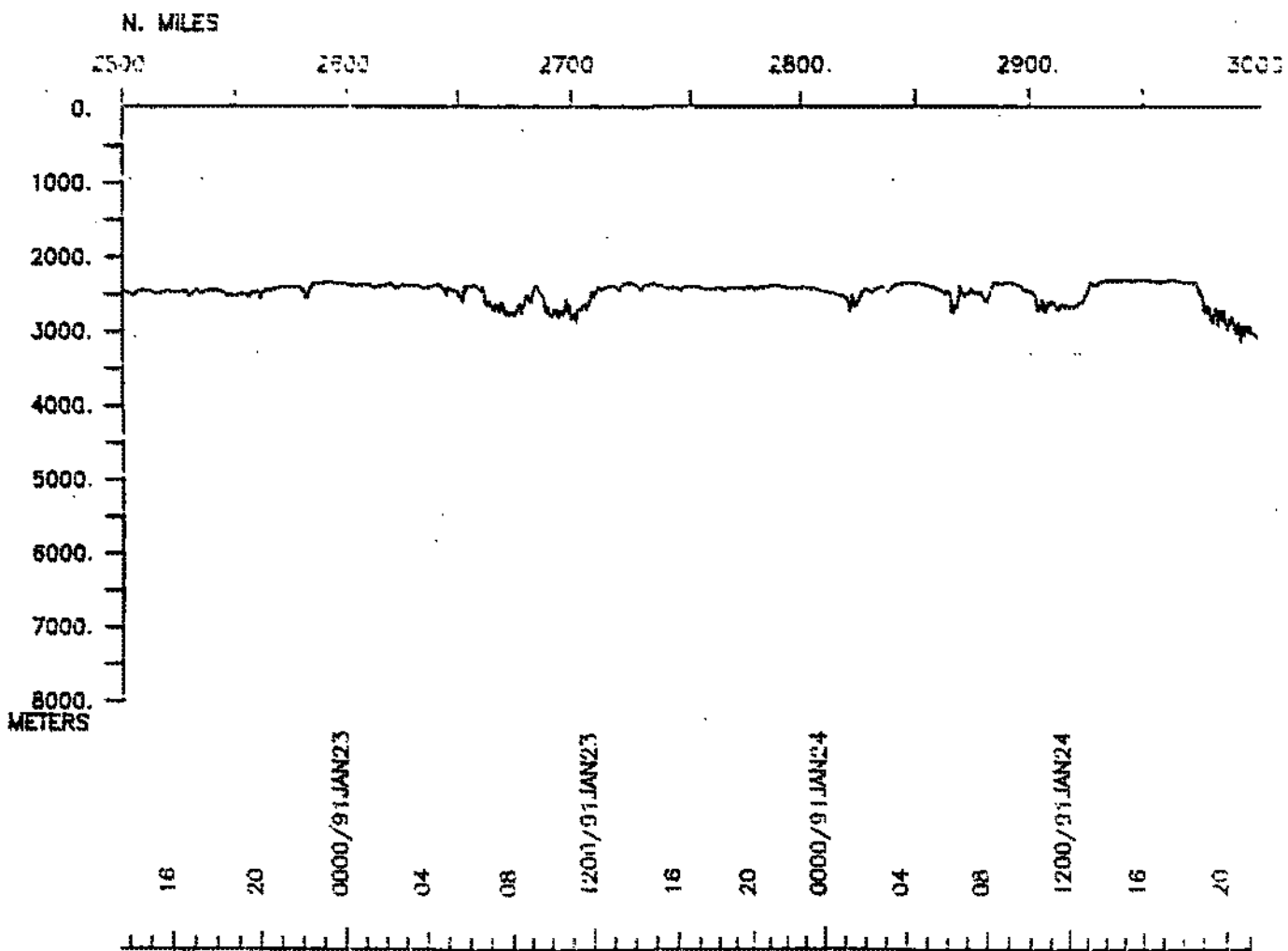
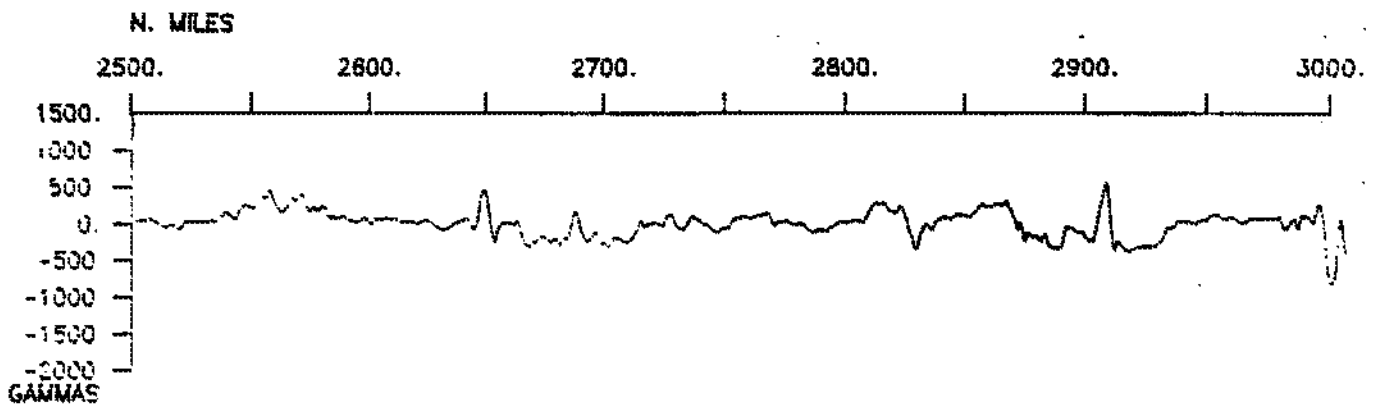
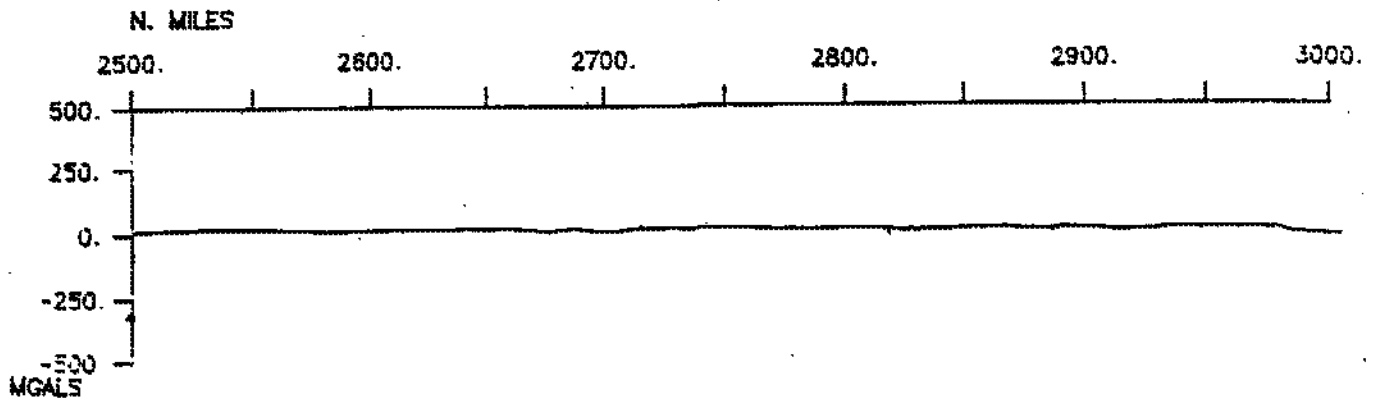
0000/91 JAN 18



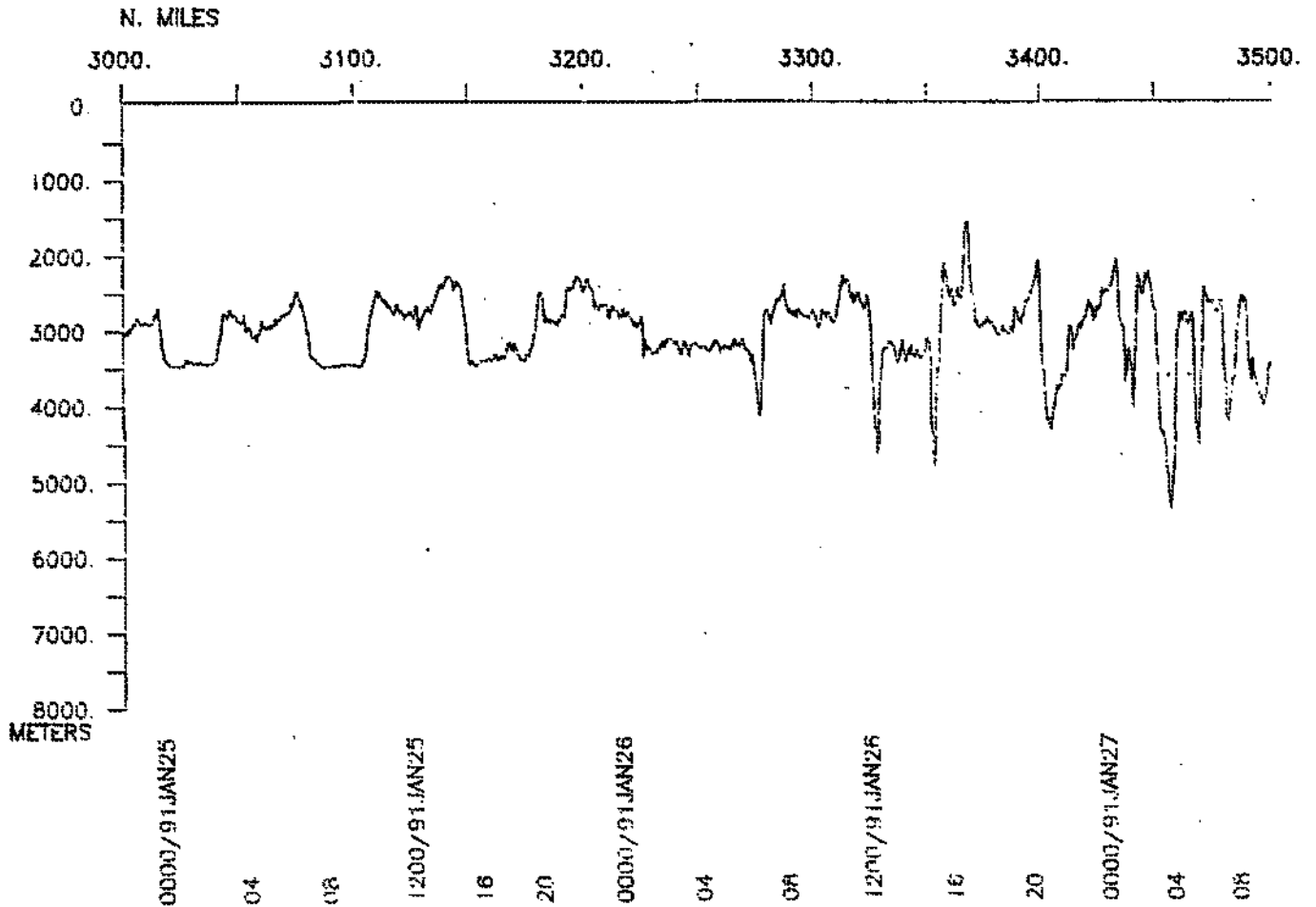
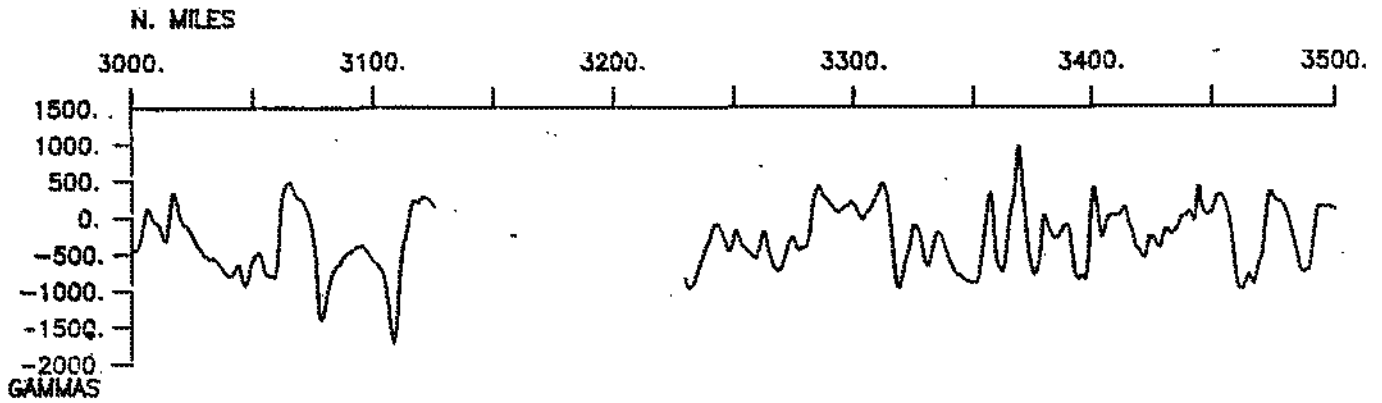
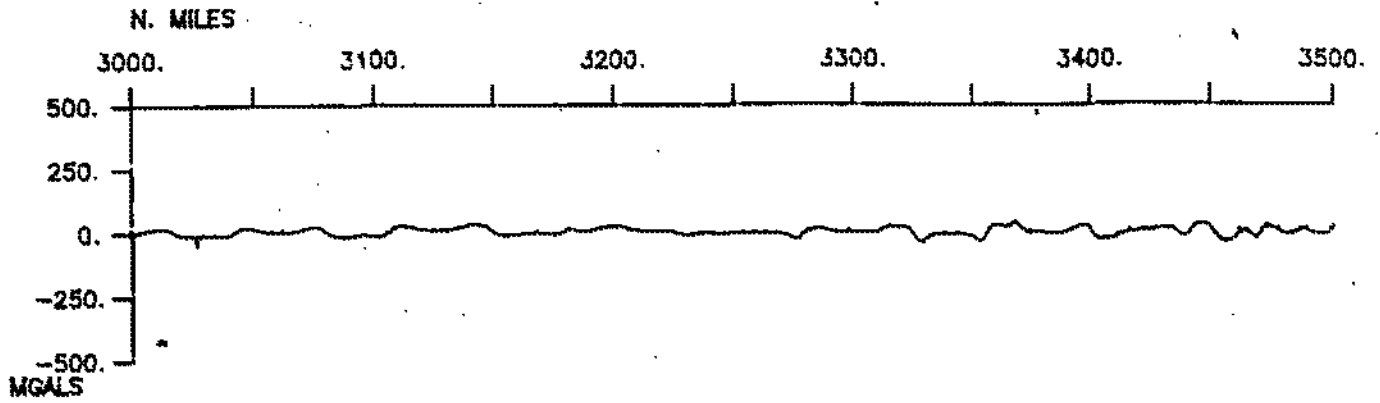
RAPA LEG 3 (RAPAD3WT)



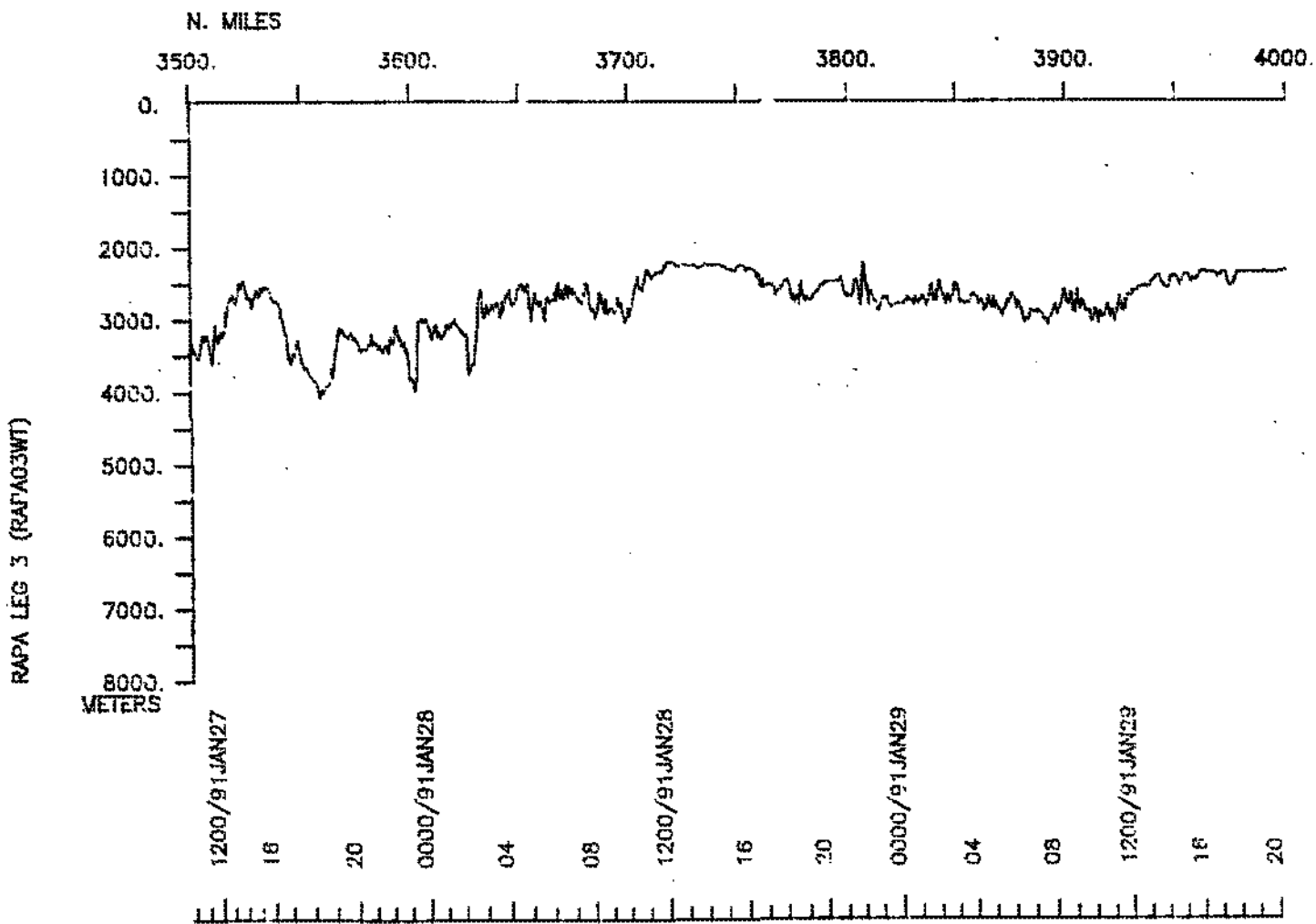
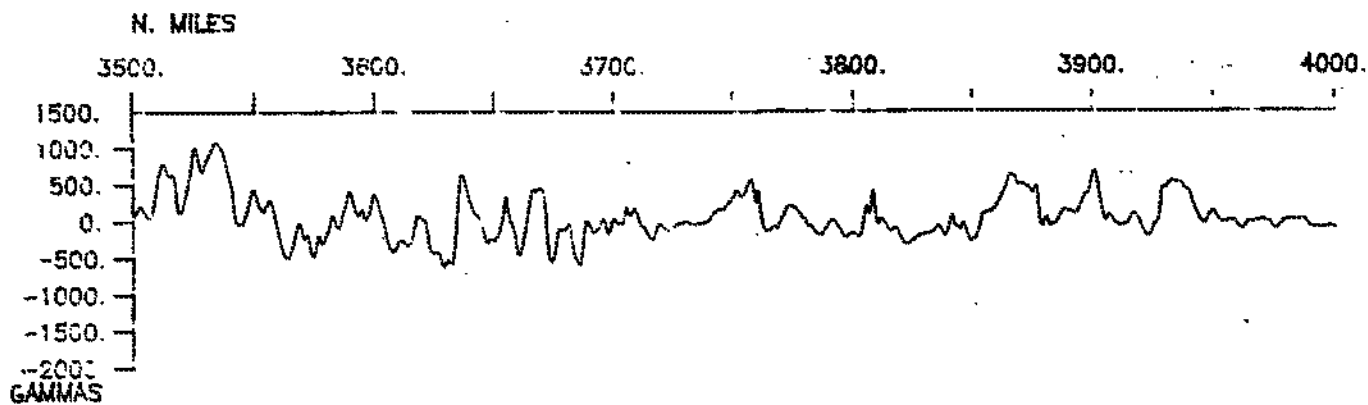
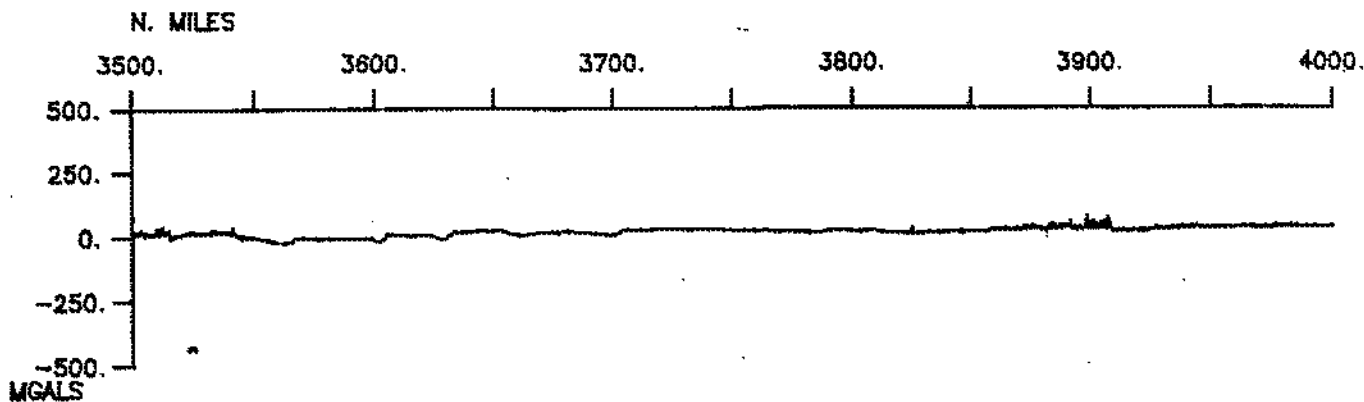
RAPA LEG 3 (RAPAO3WT)



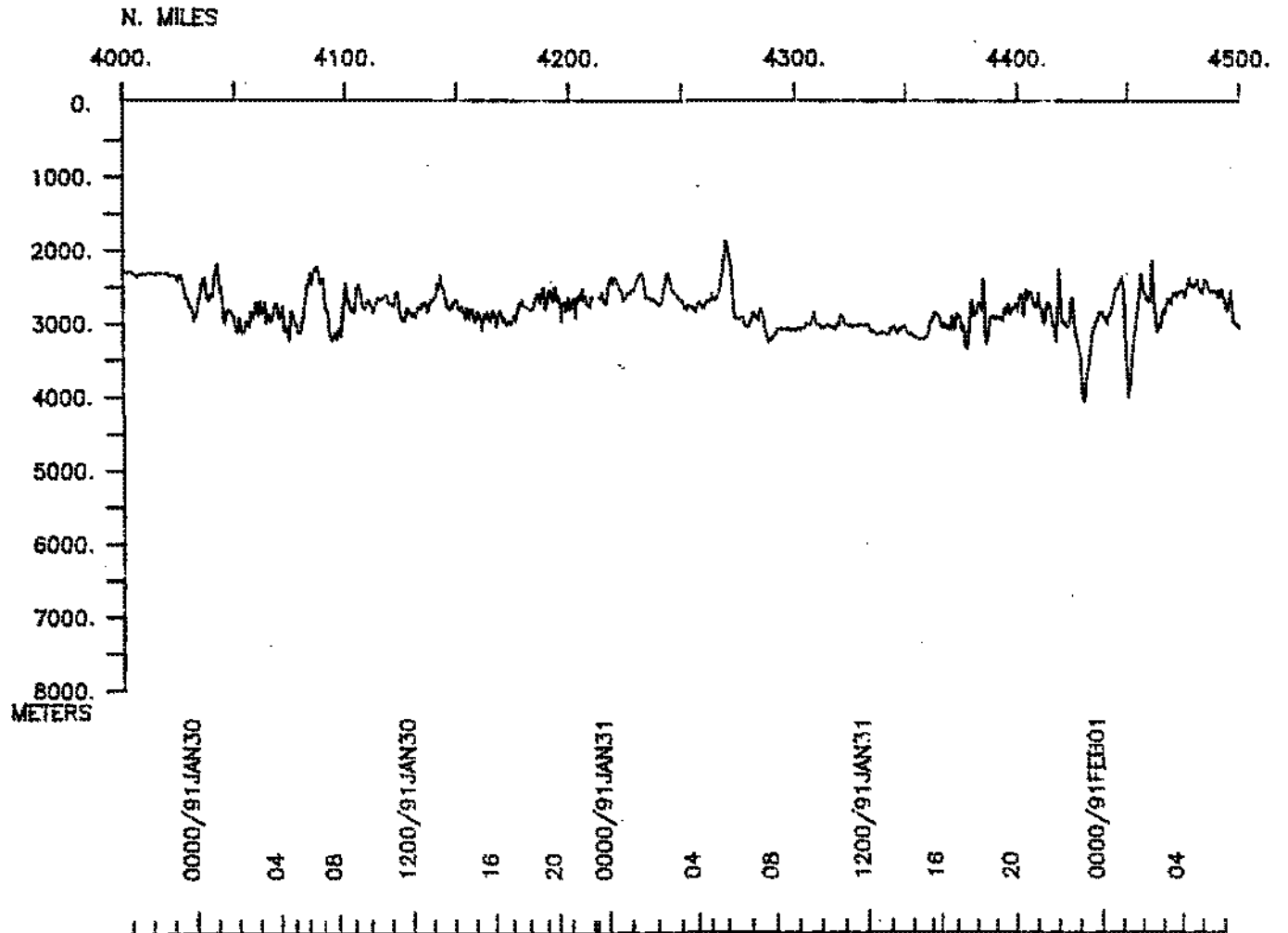
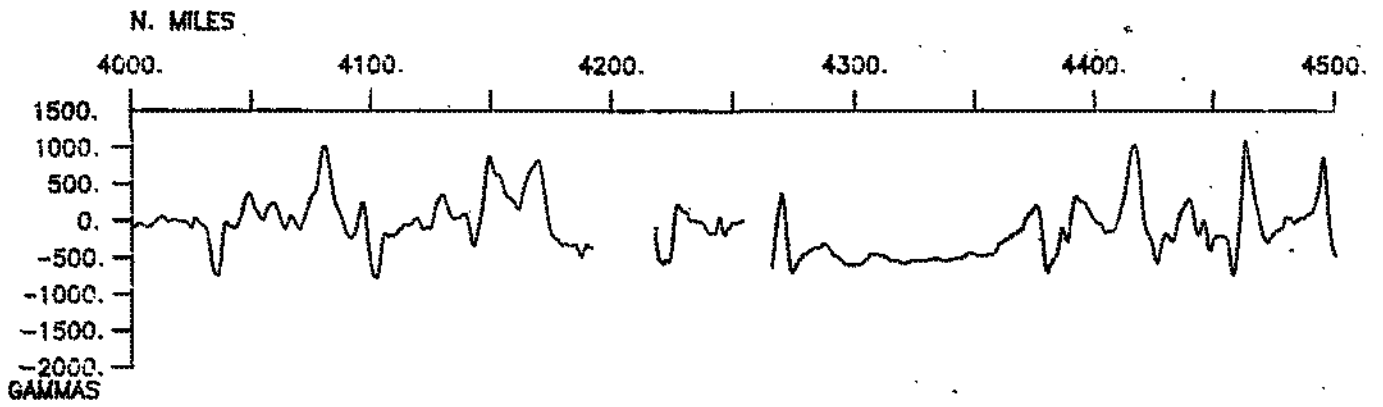
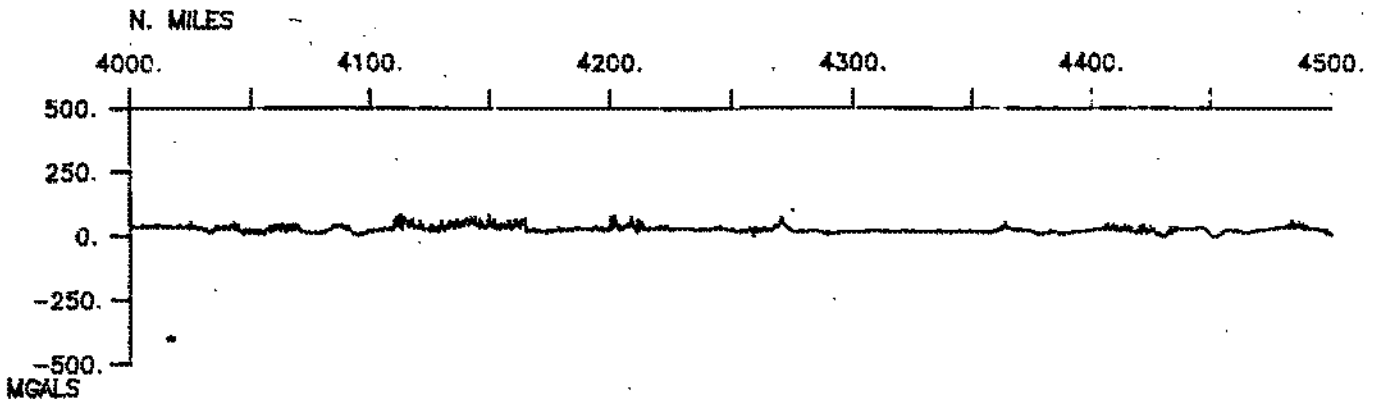
RAPA LEG 3 (RAPAO3WT)



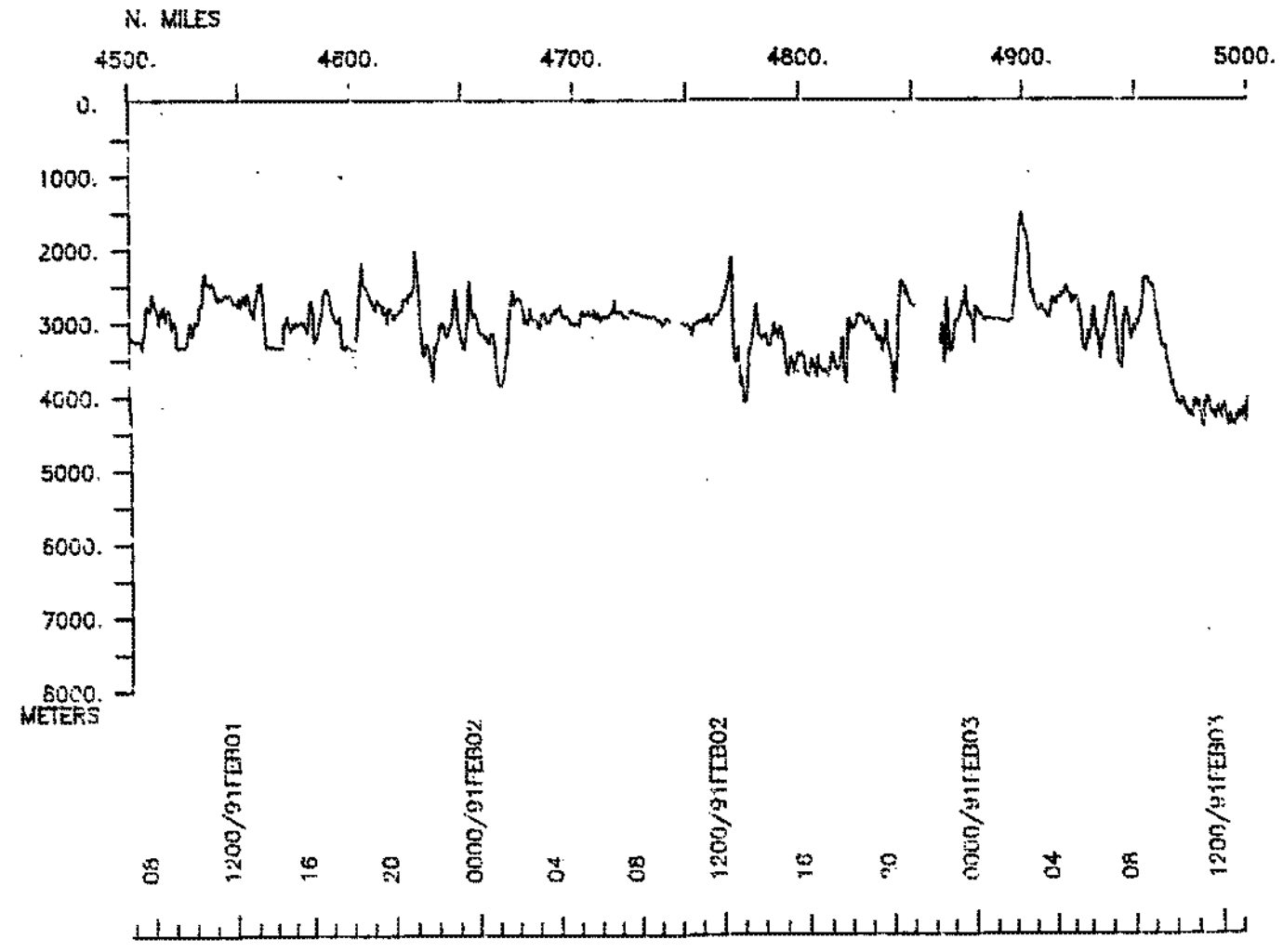
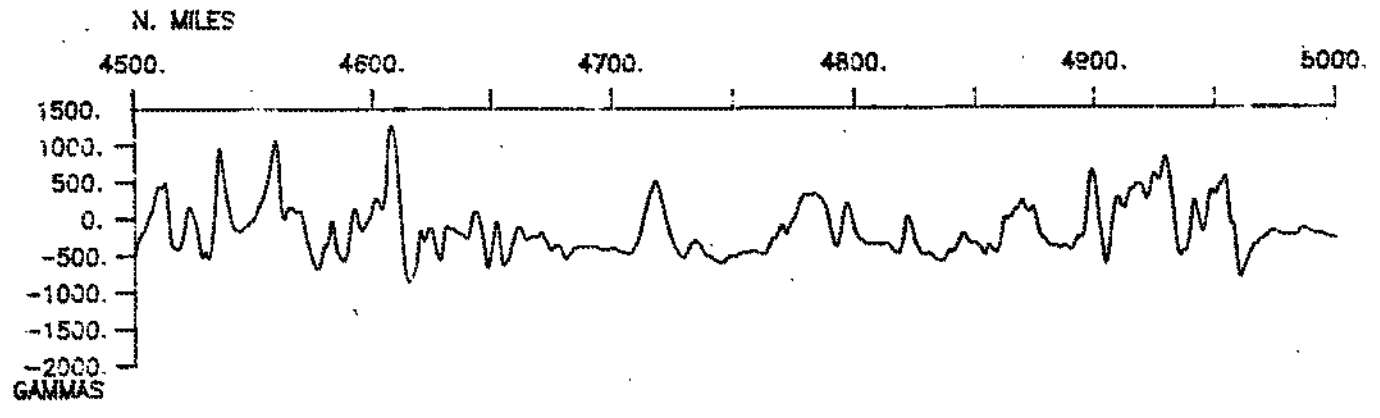
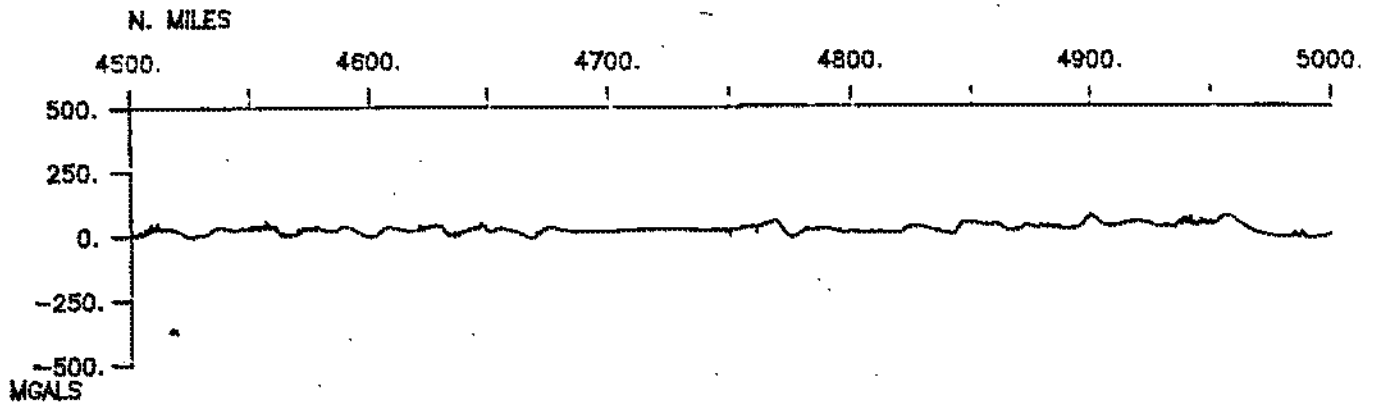
RAPA LEG 3 (RVP'NO.5WT)



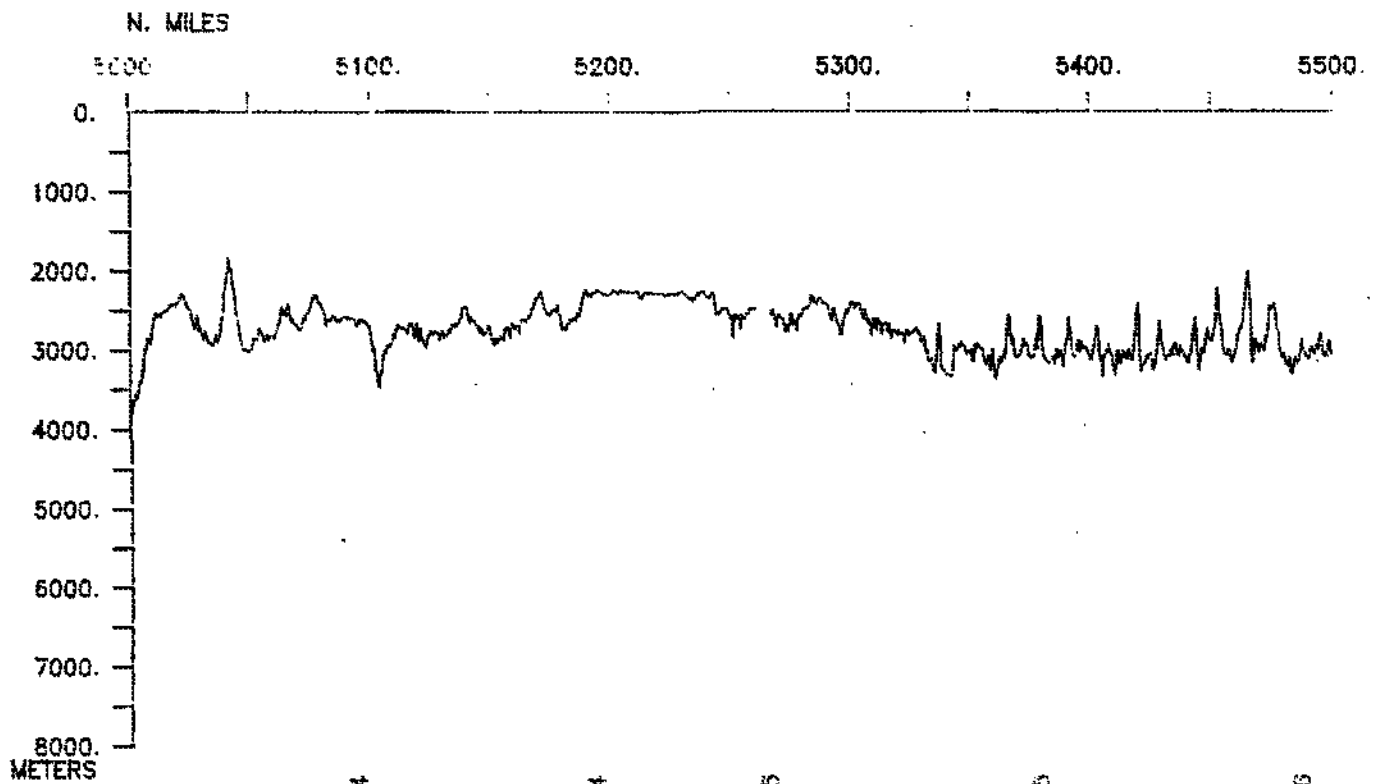
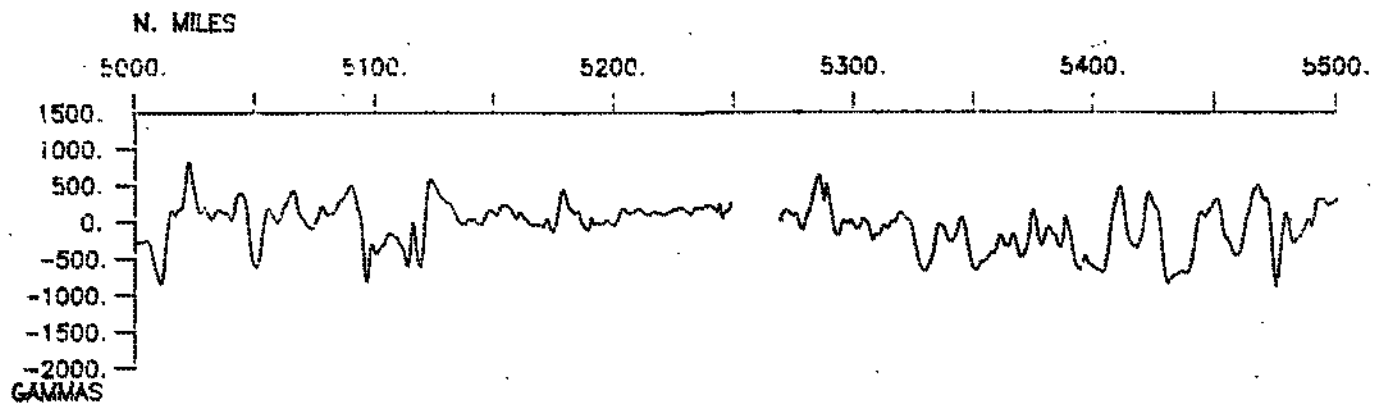
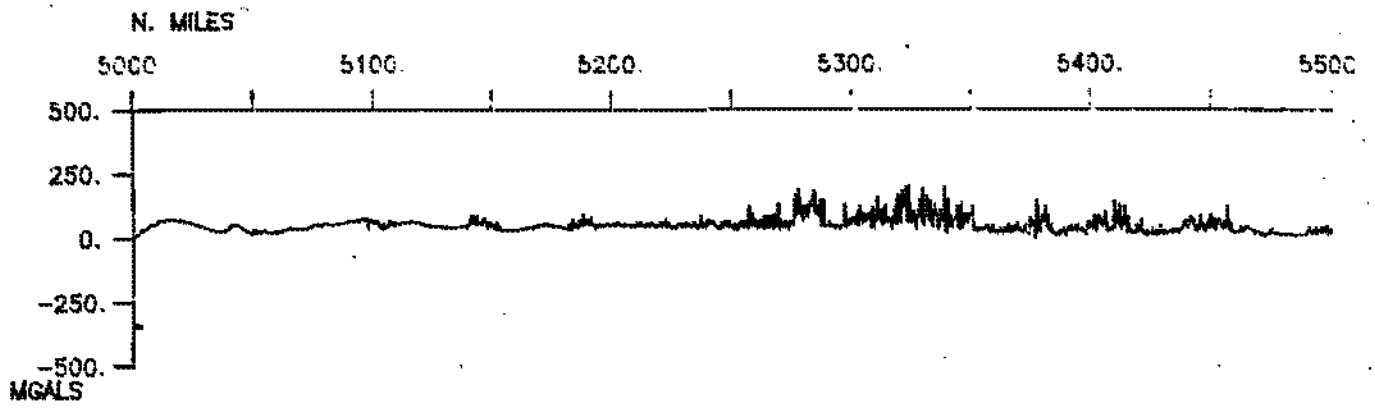
RAPA LEG 3 (RAT03WT)



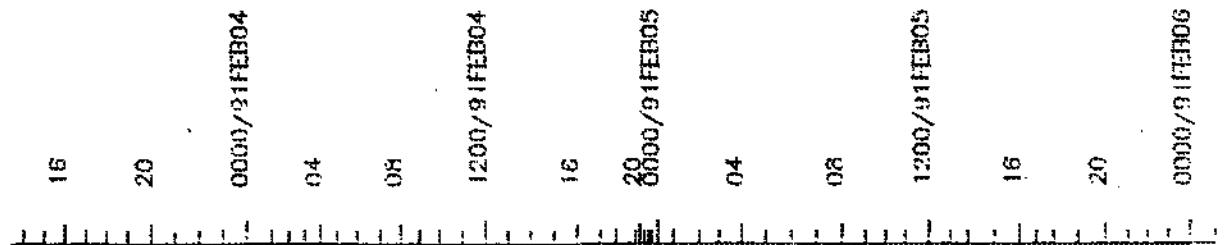
RAPA LEG 3 (RAPAO3WT)

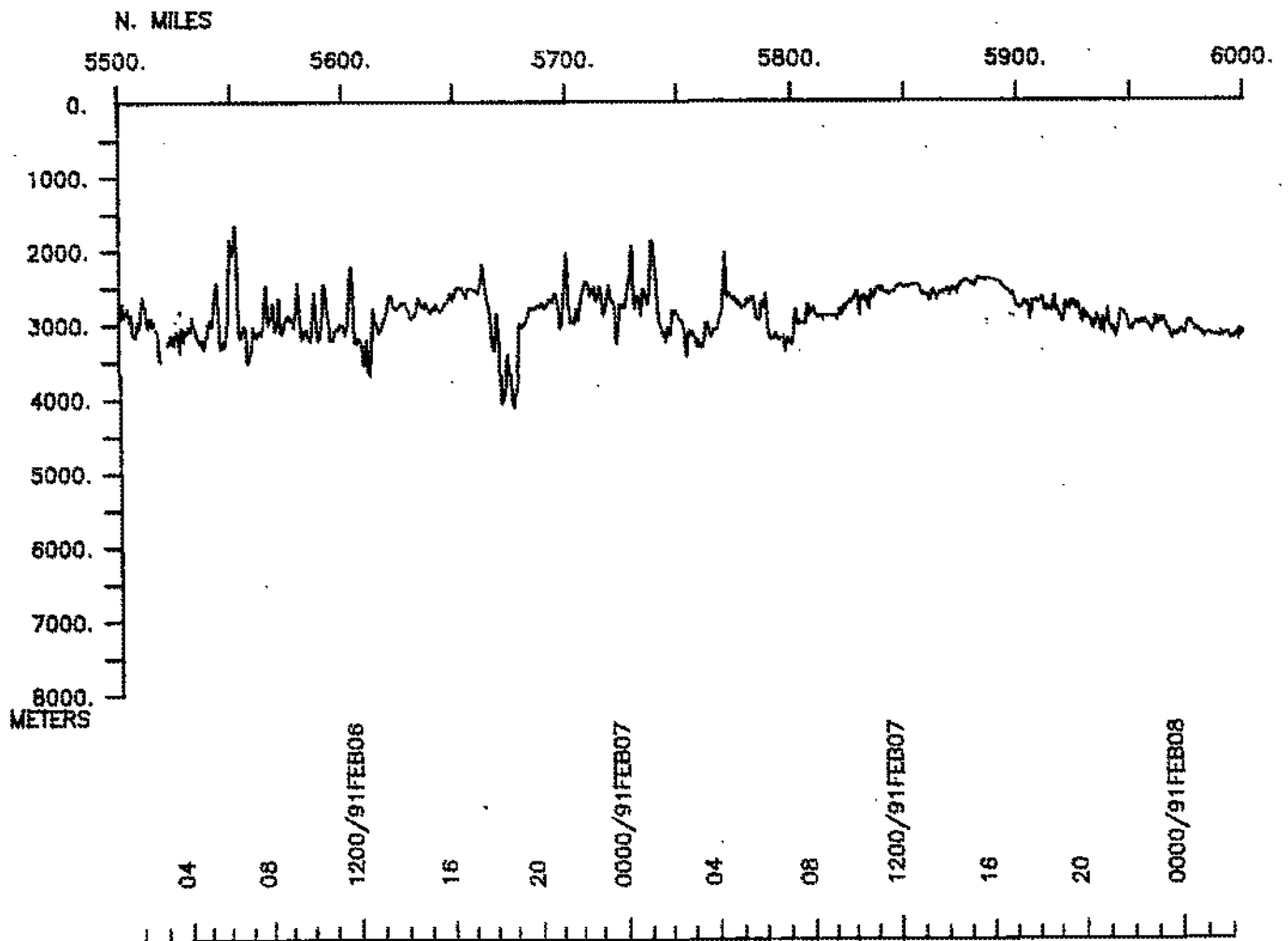
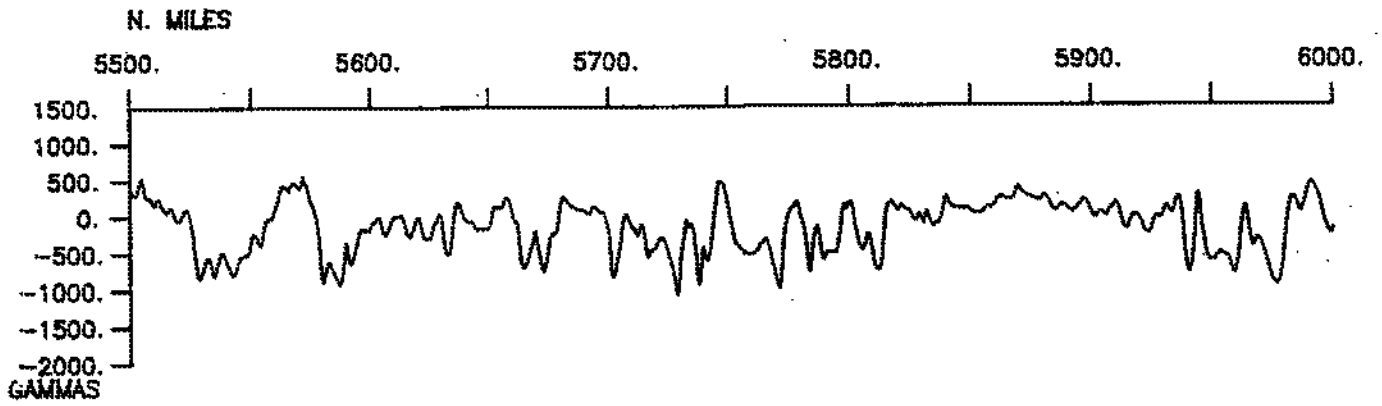


RAPA LEG 3 (RAPAO3WT)

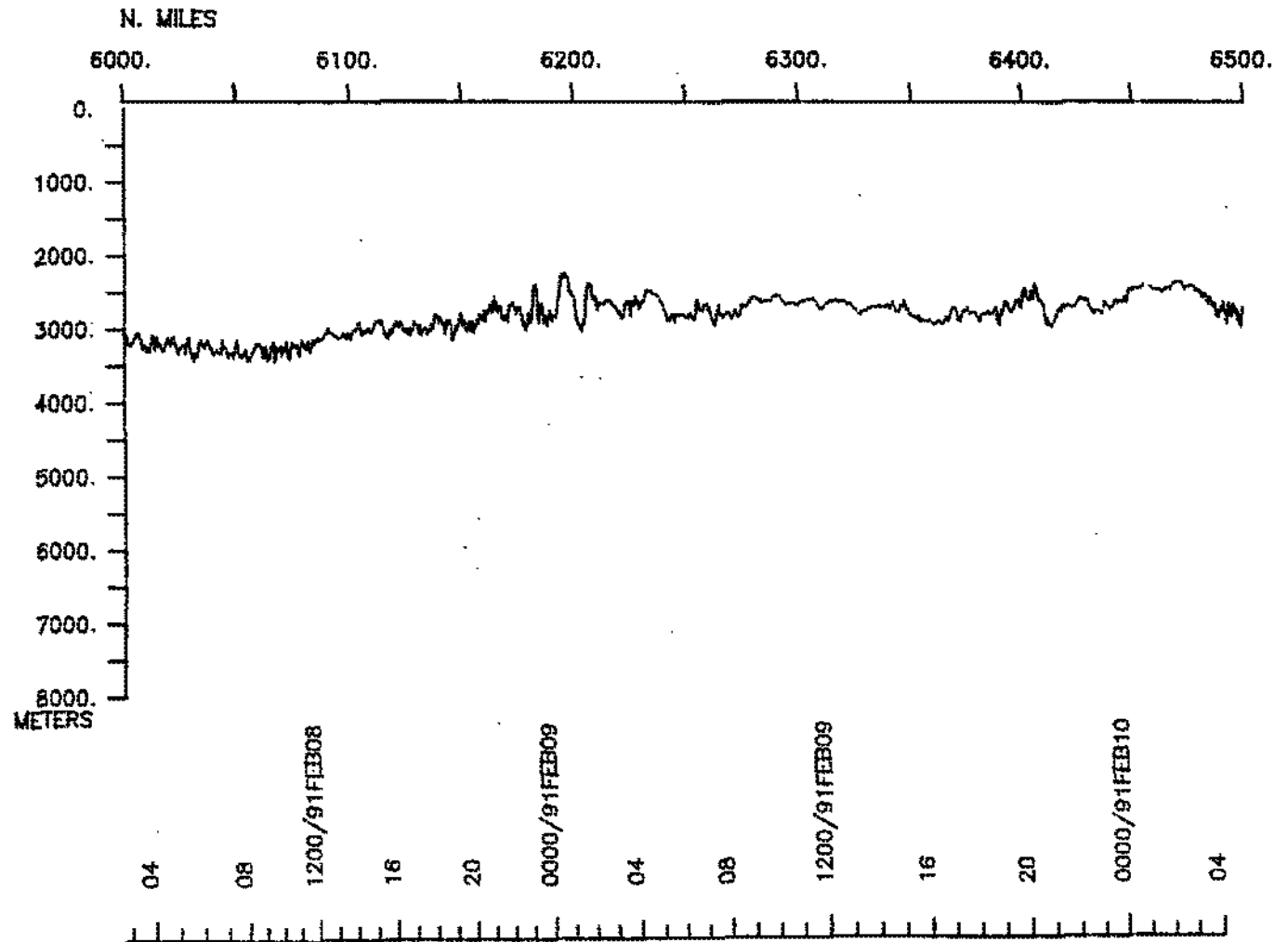
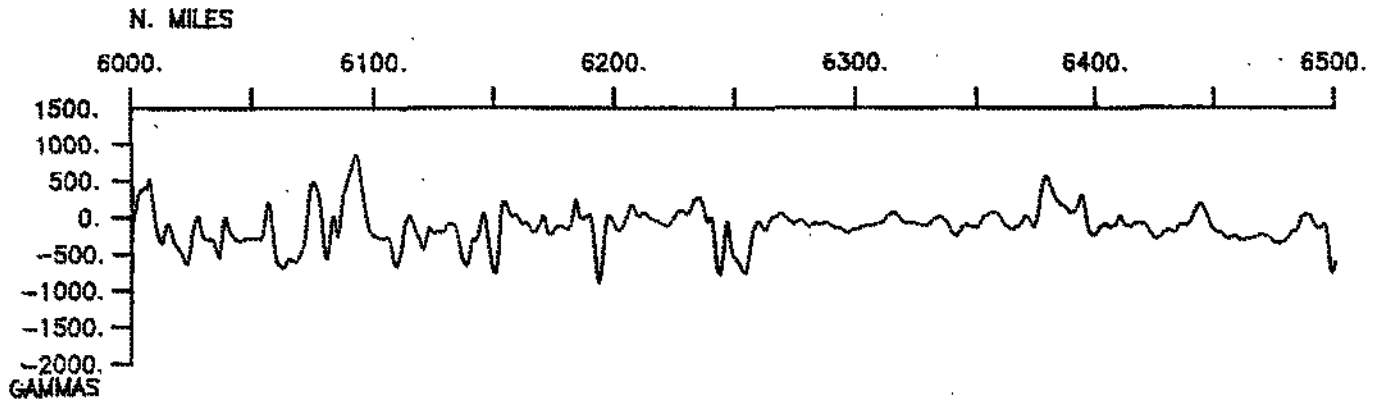
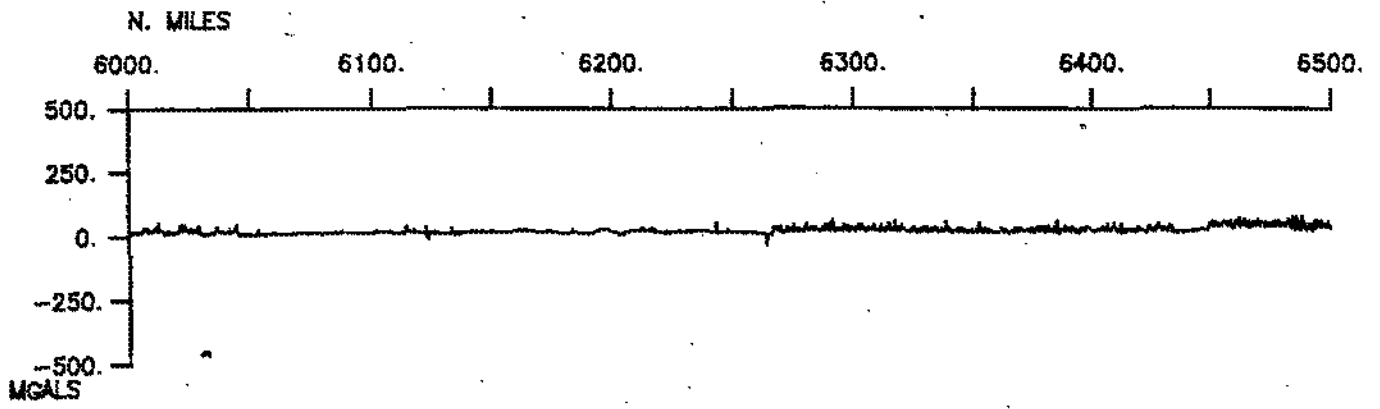


RAPA LEG 3 (RAPAO3WT)

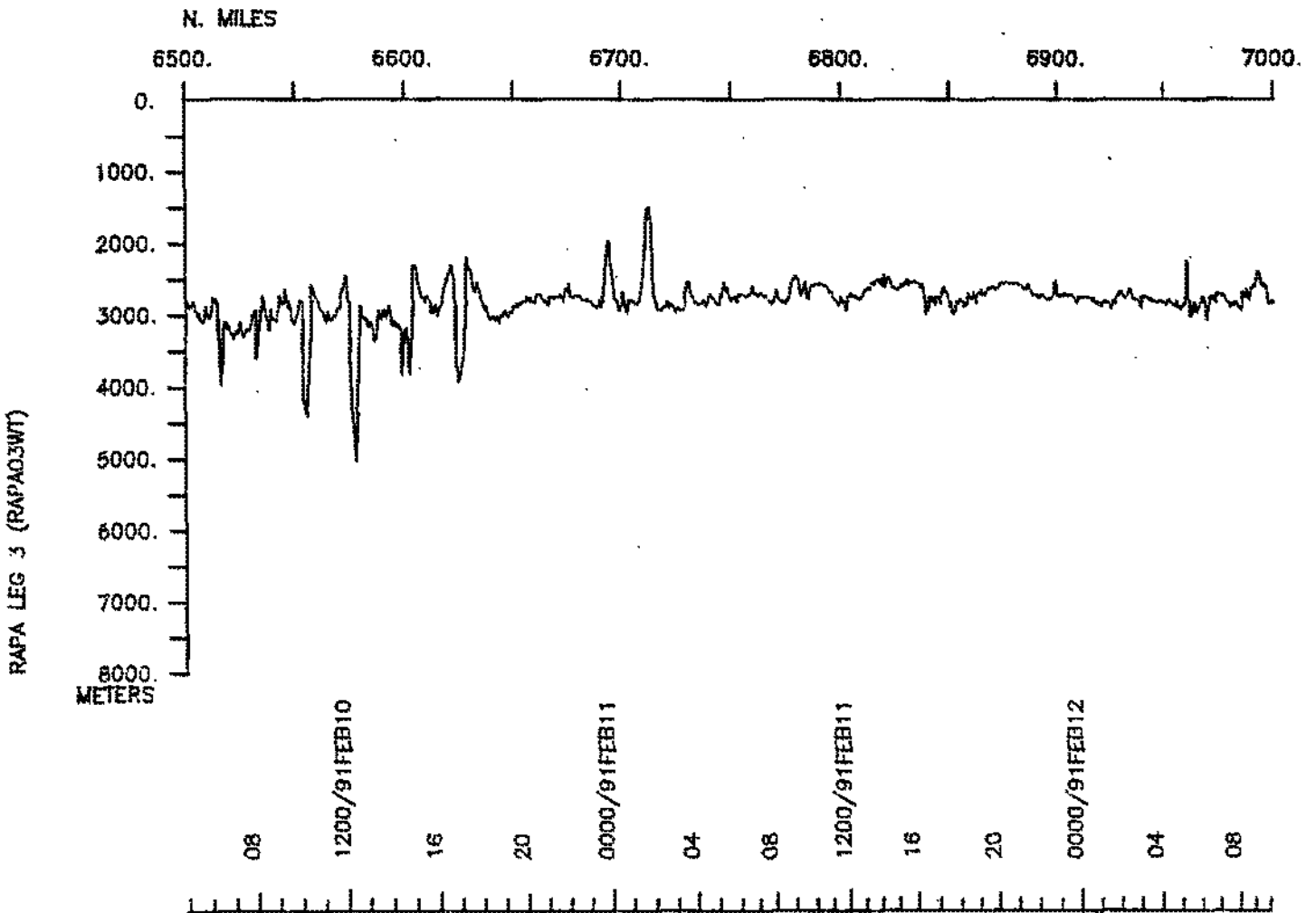
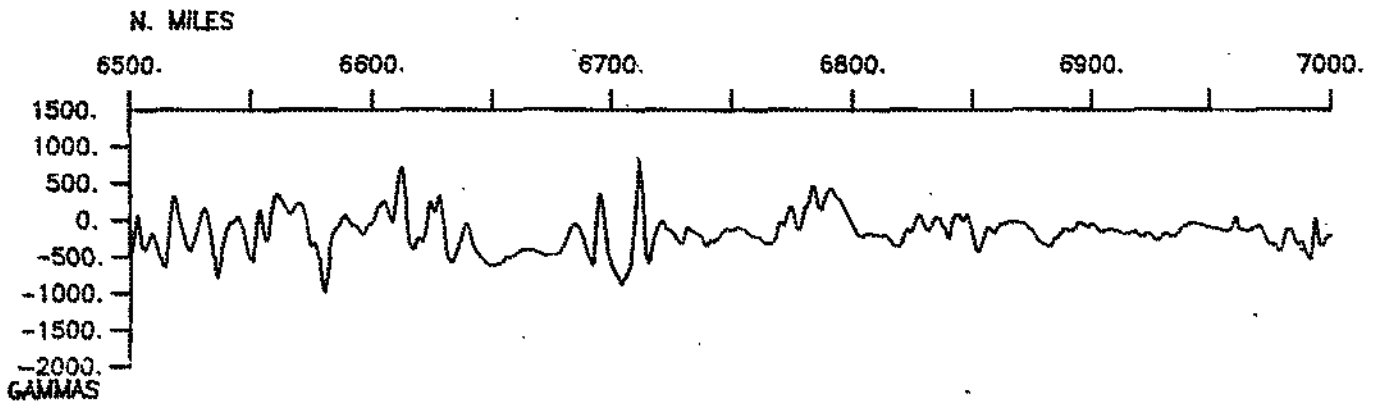
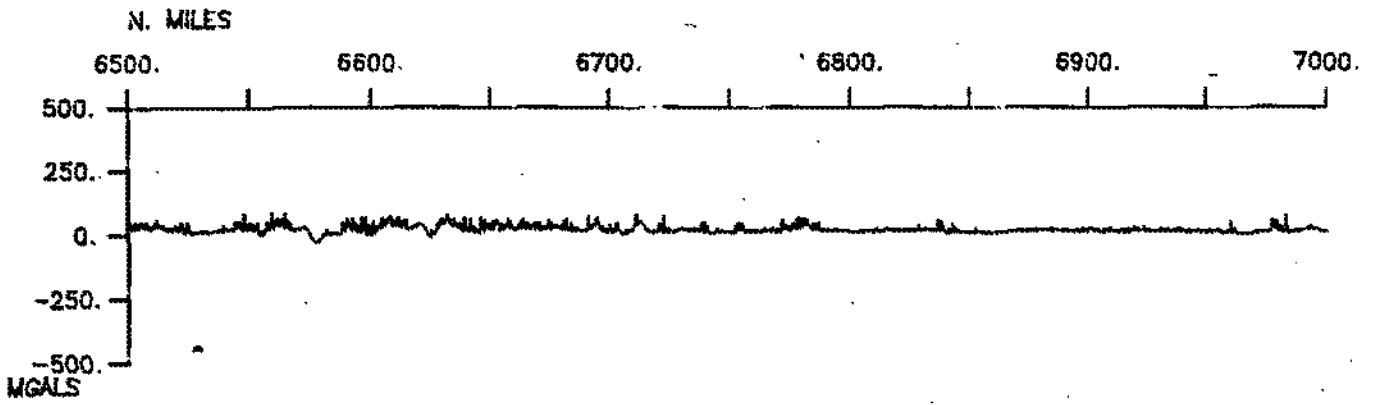




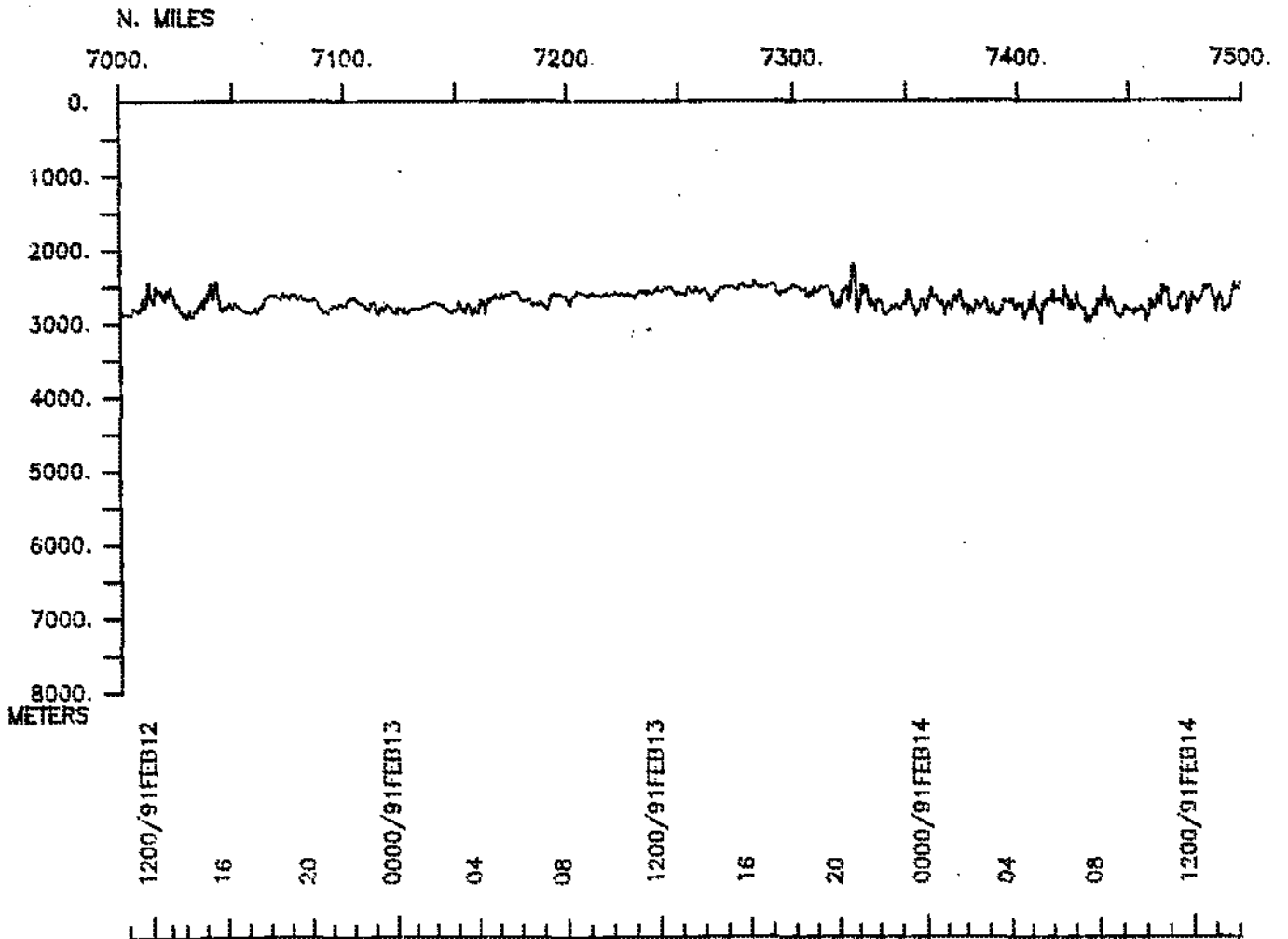
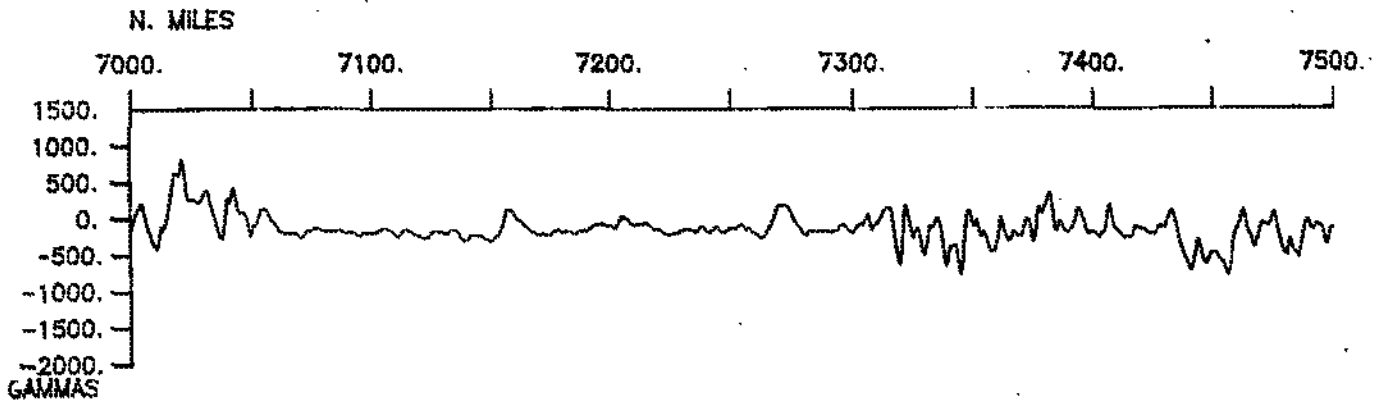
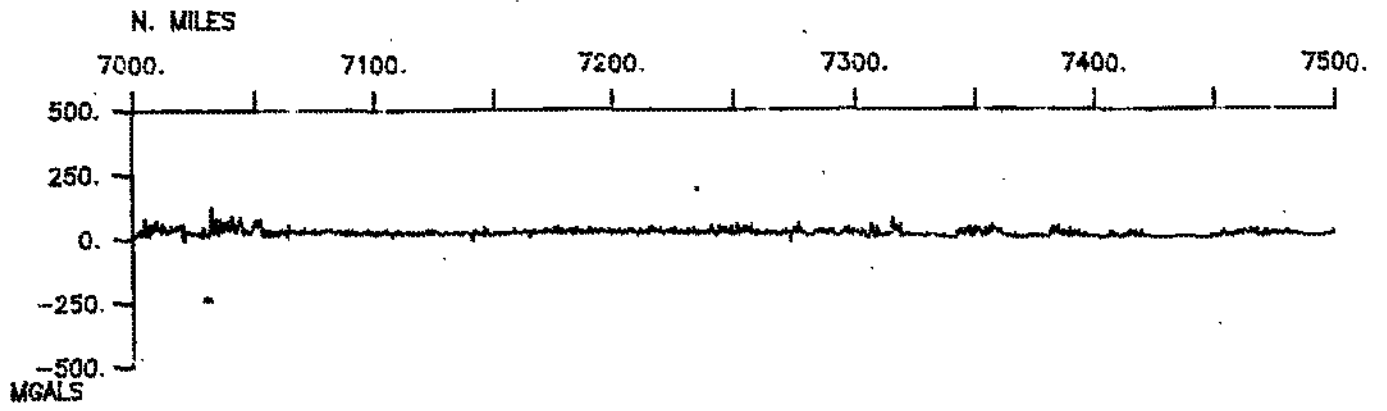
RAPA LEG 3 (RAPAO3WT)



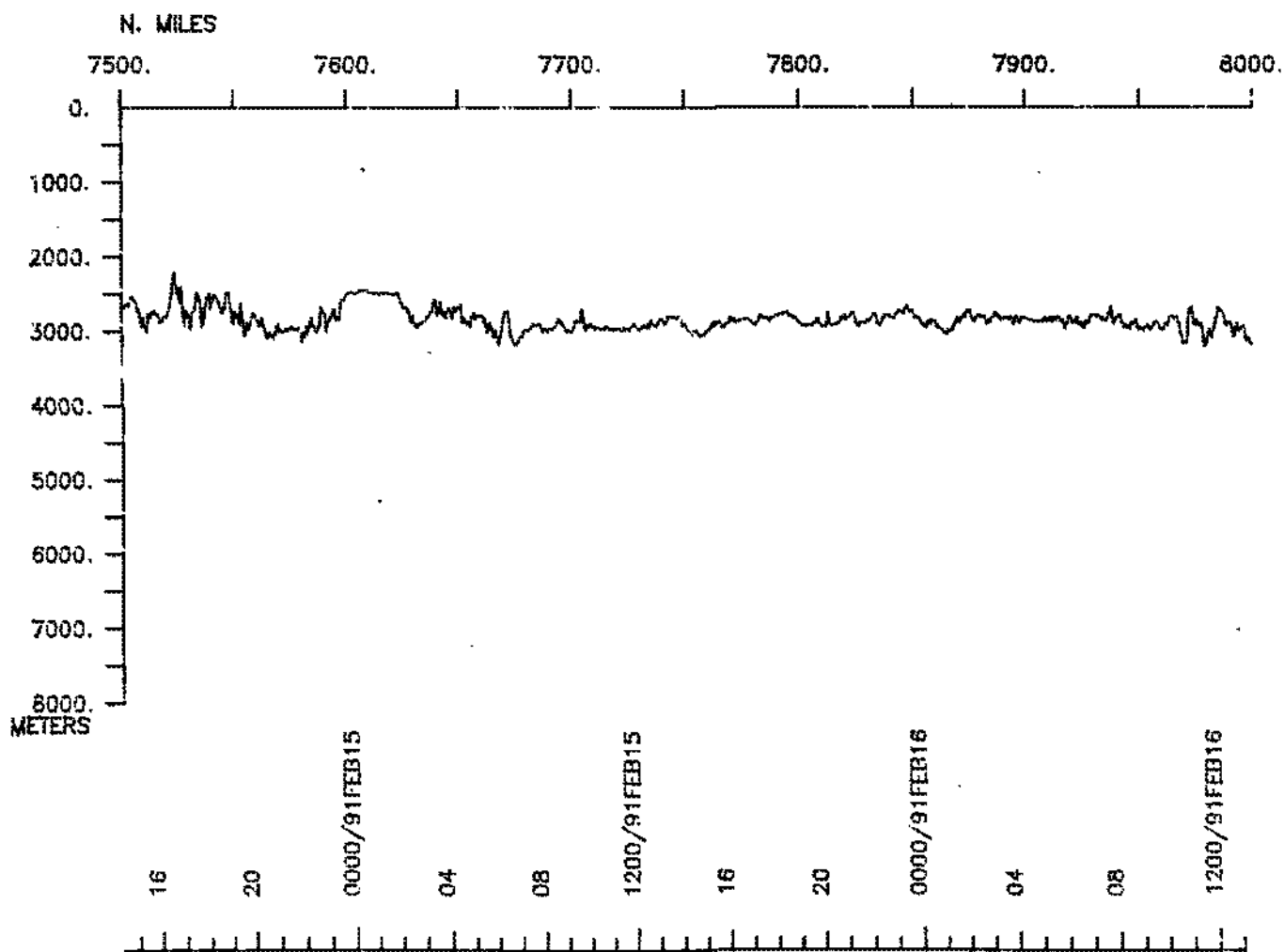
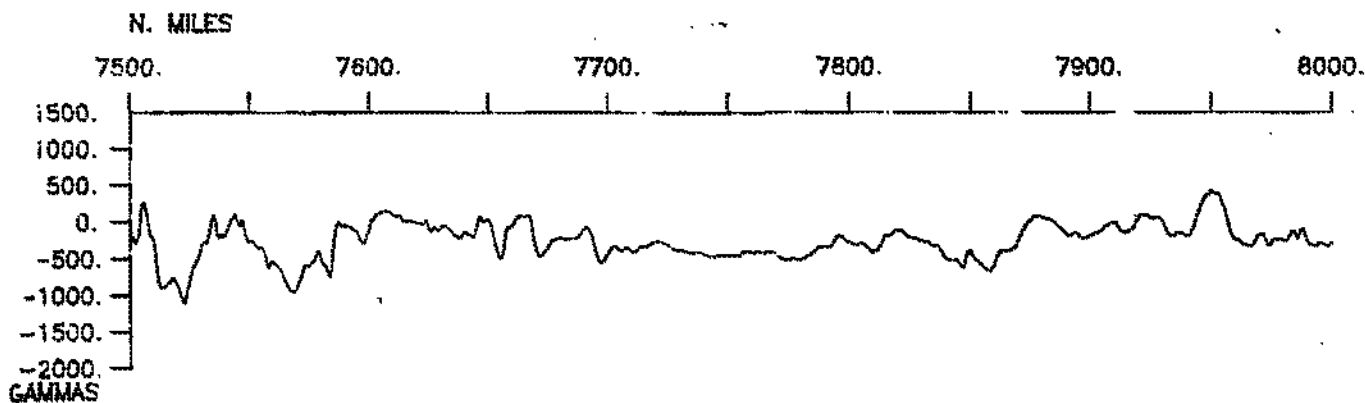
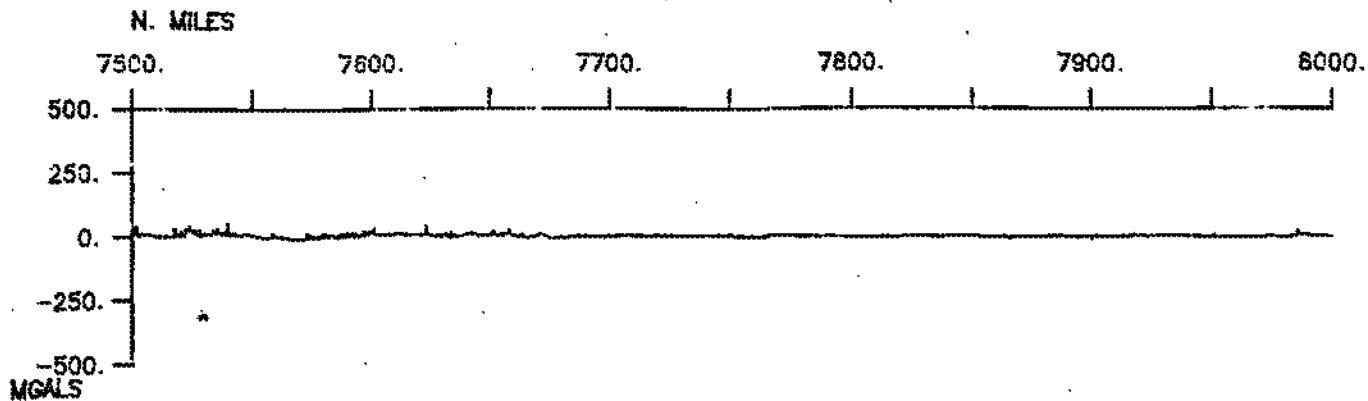
RAPA LEG 3 (RAPAO3WT)



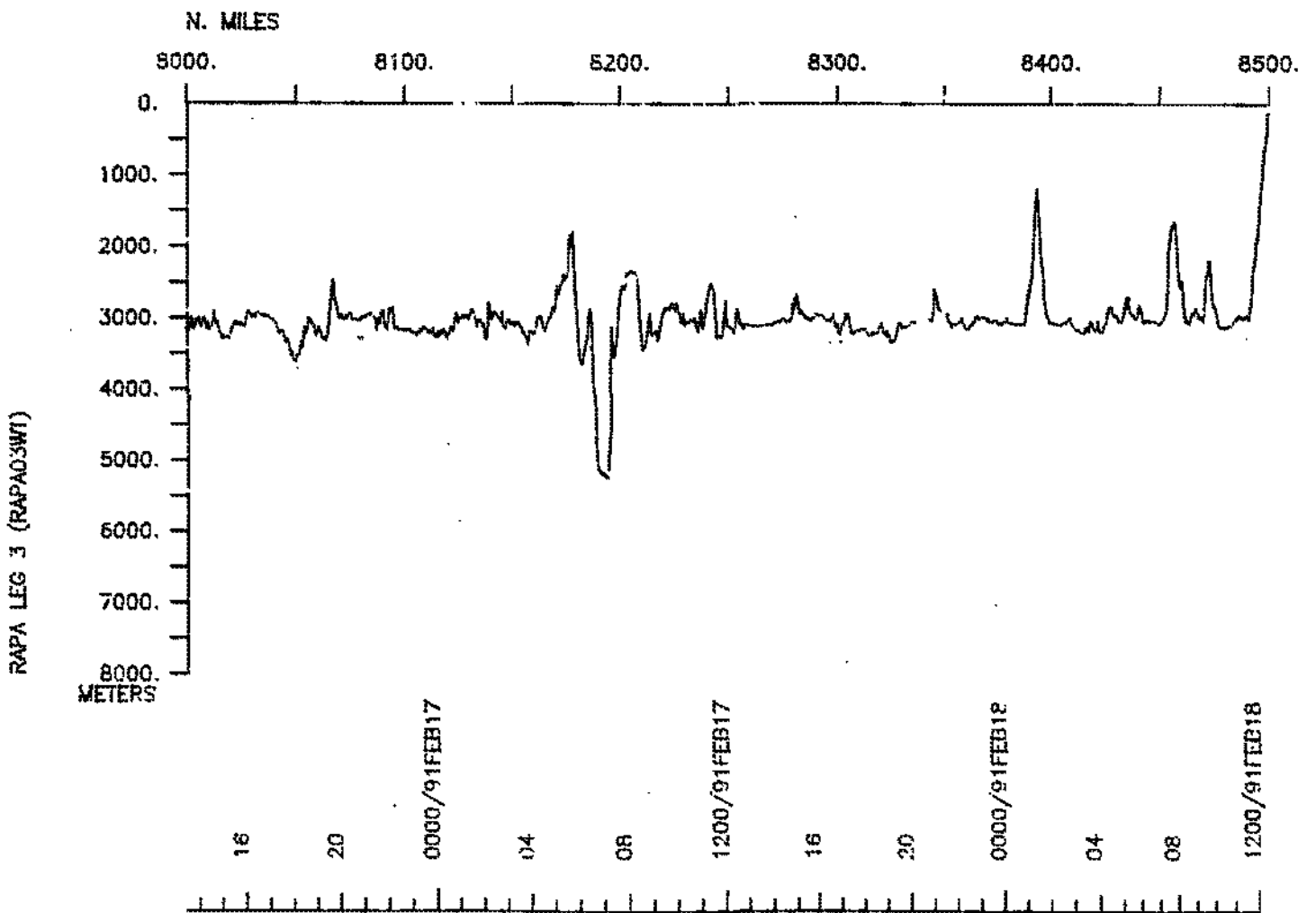
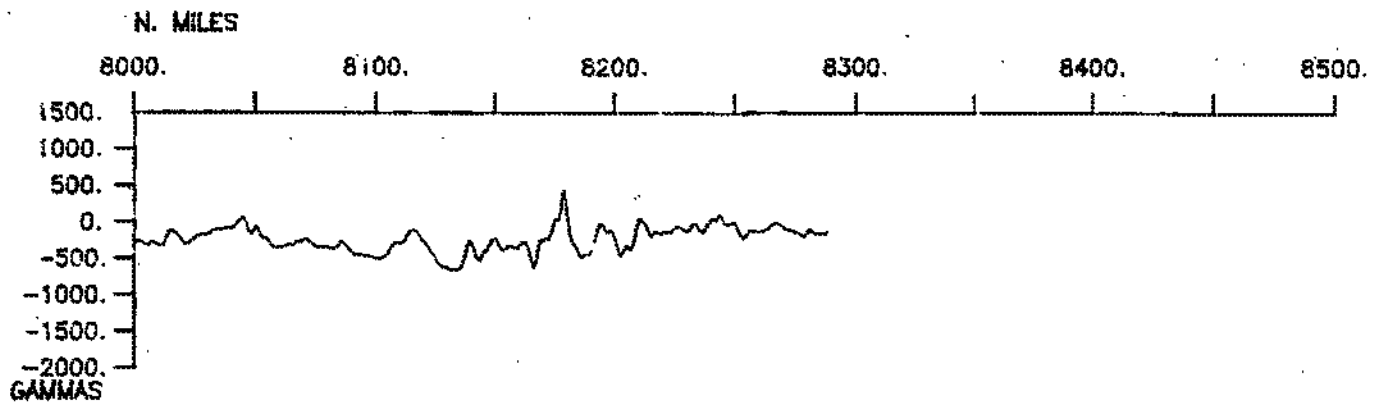
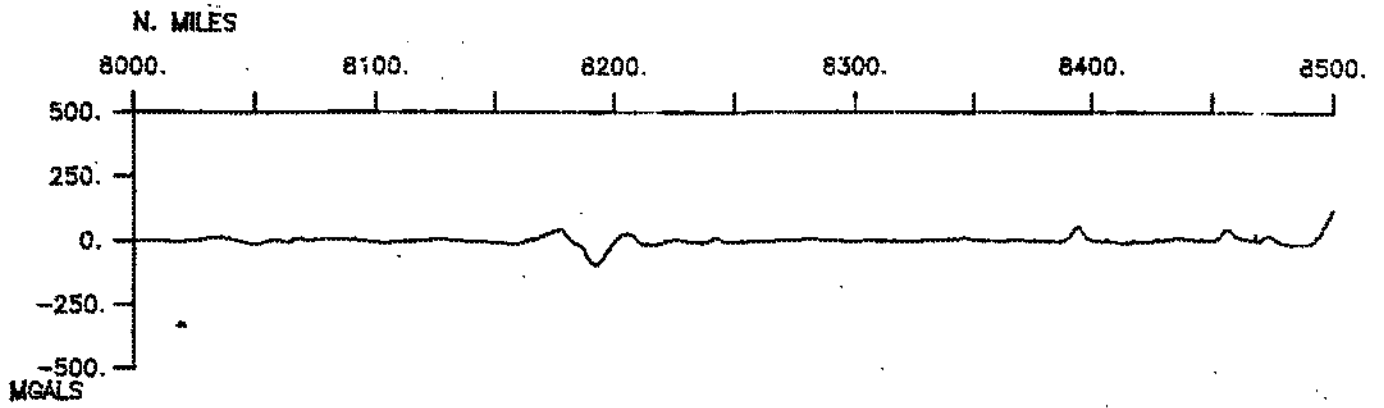
RAPA LEG 3 (RAPAO3WIT)



RAPA LEG 3 (RAPA03WT)



RAPA LEG 3 (RAPAO3WT)



RAPA LEG 3 (RAPAO3WT)

S.I.O. SAMPLE INDEX

(Issued May 1991)

RAPA EXPEDITION

Leg 8

R/V T. Washington

Easter Island (7 January 1991)
to
Easter Island (18 February 1991)

Chief Scientist:

Peter Lonsdale (Scripps Institution)

The Sample Index is a first level interdisciplinary listing of time, position, sample identification and disposition of all samples, records and measurements collected on this cruise leg. The index data are encoded at sea by the resident marine technician and processed on shore by the S.I.O. Geological Data Center shortly after the completion of the cruise leg.

Positions are interpolated on the basis of sample time by comparison to a single, edited navigation file. Samples beginning at one time and position and ending at another are entered on two consecutive lines. Disposition and sample type are represented by three and four character codes to permit further computer searches on these parameters. (Listings defining these codes are available from the Geological Data Center.)

GDC Cruise I.D.# 251

****PORTS****

2100	070191	LGPT B	EASTER ISLAND	27-09 S	109-27 W	fRAPAO3WT
1300	180291	LGPT E	EASTER ISLAND	27-09 S	109-27 W	fRAPAO3WT
1200	110191	LGUS B	EASTER ISLAND	27-09 S	109-27 W	fRAPAO3WT
2300	150191	LGUS E	EASTER ISLAND	27-09 S	109-27 W	fRAPAO3WT

****PERSONNEL****

#	***NAME***	***TITLE***	***AFFILIATION***	**CRID**
PECS MPL	LONSDALE, P.	CHIEF SCIENTIST	SCRIPPS INSTITUTION	RAPAO3WT
PESP HIG	ADKINS, B.	SEAMARC TECH	HAWAII IN.OF GEOPHYS.	RAPAO3WT
PEBO MPL	BOBBITT, A.	SEA BEAM OPERATOR	SCRIPPS INSTITUTION	RAPAO3WT
PECT STS	CHARTERS, J.	COMPUTER TECH	SCRIPPS INSTITUTION	RAPAO3WT
PESP GRD	CHEN, Y.	POST DOC	SCRIPPS INSTITUTION	RAPAO3WT
PEBE STS	JAIN, J.	SEA BEAM ENG.	SCRIPPS INSTITUTION	RAPAO3WT
PESP HIG	JOHNSON, D.	COMPUTER TECH	HAWAII IN.OF GEOPHYS.	RAPAO3WT
PESP HIG	MARTINEZ, F.	S.M.PARTY CHIEF	HAWAII IN.OF GEOPHYS.	RAPAO3WT
PEST GRD	MAYER, H.	GRAD STUDENT	SCRIPPS INSTITUTION	RAPAO3WT
PESP HIG	MUELLER, T.	S.M. DATA TECH	HAWAII IN.OF GEOPHYS.	RAPAO3WT
PERT STS	PILLARD, E.	RESIDENT TECH	SCRIPPS INSTITUTION	RAPAO3WT
PESP WHO	SMITH, D.	RESEARCHER	WOODS HOLE	RAPAO3WT

****NOTES****

#AN 'X' IN THE (B)EGIN/(E)ND COLUMN FOLLOWING THE SAMPLE CODE INDICATES NO
 #SAMPLE OR DATA RECOVERED. A 'C' INDICATES CONTINUATION OF DATA COLLECTION
 #FROM BEFORE THE BEGINNING OR AFTER THE END OF A PARTICULAR LEG. (MOORED
 #BOTTOM INSTRUMENTS, FOR EXAMPLE.) THE NUMBER APPEARING IN THE COLUMNS
 #BETWEEN THE SAMPLE IDENTIFIER AND THE DISPOSITION CODE, FOR MANY SAMPLE
 #ENTRIES, IS THE WATER DEPTH IN CORRECTED METERS. POSITIONS ARE IN TENTHS
 #OF MINUTES.

#GMT #TIME #	DDMMYY DATE	LOC TIME Z	T	SAMP CODE	SAMPLE IDENTIFIER	DISP CODE	LAT.	LONG.	CRUISE LEG-SHIP
--------------------	----------------	------------------	---	--------------	----------------------	--------------	------	-------	--------------------

***UNDERWAY DATA CURATOR - S. M. SMITH EXT. 42752

LOG BOOKS

2125	070191			LBUW B	UNDERWAY WATCH LOG	GDC	27-085S	109-263W	sRAPAO3WT
1241	180291			LBUW E	UNDERWAY WATCH LOG	GDC	27-126S	109-240W	sRAPAO3WT
1450	170191			LBUW B	SEAMARC II LOG BOOK	UHI	34-437S	110-303W	sRAPAO3WT
1708	040291			LBUW E	SEAMARC II LOG BOOK	UHI	54-409S	120-555W	sRAPAO3WT

*** ECHO SOUNDER RECORDS ***

2232	070191			MBRM B	SEABEAM MONITOR R-01	GDC	27-183S	109-297W	sRAPAO3WT
1030	160191			MBRM E	SEABEAM MONITOR R-01	GDC	29-267S	109-480W	sRAPAO3WT
1043	160191			MBRM B	SEABEAM MONITOR R-02	GDC	29-291S	109-485W	sRAPAO3WT
0033	230191			MBRM E	SEABEAM MONITOR R-02	GDC	44-534S	112-150W	sRAPAO3WT
0037	232191			MBRM B	SEABEAM MONITOR R-03	GDC	44-540S	112-152W	sRAPAO3WT
0220	310191			MBRM E	SEABEAM MONITOR R-03	GDC	52-350S	118-211W	sRAPAO3WT
0226	312191			MBRM B	SEABEAM MONITOR R-04	GDC	52-350S	118-228W	sRAPAO3WT
0344	060291			MBRM E	SEABEAM MONITOR R-04	GDC	54-326S	118-470W	sRAPAO3WT
0452	060291			MBRM B	SEABEAM MONITOR R-05	GDC	54-378S	118-427W	sRAPAO3WT
2131	090291			MBRM E	SEABEAM MONITOR R-05	GDC	50-338S	116-569W	sRAPAO3WT
2135	090291			MBRM B	SEABEAM MONITOR R-06	GDC	50-331S	116-565W	sRAPAO3WT
1720	130291			MBRM E	SEABEAM MONITOR R-06	GDC	41-453S	111-172W	sRAPAO3WT
1727	130291			MBRM B	SEABEAM MONITOR R-07	GDC	41-443S	111-171W	sRAPAO3WT
1455	170291			MBRM E	SEABEAM MONITOR R-07	GDC	30-514S	109-303W	sRAPAO3WT
1500	170291			MBRM B	SEABEAM MONITOR R-08	GDC	30-505S	109-302W	sRAPAO3WT
1241	180291			MBRM E	SEABEAM MONITOR R-08	GDC	27-126S	109-240W	sRAPAO3WT
0253	100191			DPR3 B	3.5 KHZ RECORD R-01	GDC	32-405S	110-043W	sRAPAO3WT
2153	060291			DPR3 E	3.5 KHZ RECORD R-01	GDC	54-390S	118-344W	sRAPAO3WT

#GMT #TIME #	DDMMYY DATE	LOG-T TIME Z	SAMP CODE	SAMPLE IDENTIFIER	DISP CODE	LAT.	LONG.	CRUISE LEG-SHIP
*** SEA BEAM SURVEYS ***								
1325	170191		MBSV B	RAPA03-01 SURVEY	GDC	34-370S	110-300W	FRAPA03WT
0030	180191		MBSV E	PAC-NAZ-FERN T.J.	GDC	35-130S	110-590W	FRAPA03WT
0320	180191		MBSV B	RAPA03-02 SURVEY	GDC	35-400S	110-120W	FRAPA03WT
1020	200191		MBSV E	36.0S EPR OFFSET	GDC	36-400S	111-240W	FRAPA03WT
1330	200191		MBSV B	RAPA03-03 SURVEY	GDC	37-010S	110-370W	FRAPA03WT
1610	200191		MBSV E	RAPA03-03 SURVEY	GDC	37-100S	110-460W	FRAPA03WT
1820	200191		MBSV B	RAPA03-04 SURVEY	GDC	37-290S	110-490W	FRAPA03WT
2300	200191		MBSV E	RAPA03-04 SURVEY	GDC	37-400S	111-040W	FRAPA03WT
0630	230191		MBSV B	RAPA03-05 SURVEY	GDC	45-450S	112-320W	FRAPA03WT
1220	230191		MBSV E	46 DEG OFFSET	GDC	46-040S	112-520W	FRAPA03WT
0535	240191		MBSV B	RAPA03-06 SURVEY	GDC	48-250S	113-120W	FRAPA03WT
1320	240191		MBSV E	RAPA03-06 SURVEY	GDC	48-480S	113-300W	FRAPA03WT
1840	240191		MBSV B	EAST MENARD	GDC	49-230S	113-060W	FRAPA03WT
2045	260191		MBSV E	TRANSFORM FAULT	GDC	50-070S	114-470W	FRAPA03WT
1000	270191		MBSV B	WEST MENARD	GDC	49-040S	116-080W	FRAPA03WT
1035	280191		MBSV E	TRANSFORM FAULT	GDC	49-315S	117-130W	FRAPA03WT
1550	280191		MBSV B	RAPA03-09 SURVEY	GDC	50-150S	116-570W	FRAPA03WT
0220	290191		MBSV E	RAPA03-09 SURVEY	GDC	50-460S	117-190W	FRAPA03WT
0400	290191		MBSV B	RAPA03-10 SURVEY	GDC	50-530S	117-150W	FRAPA03WT
1200	290191		MBSV E	RAPA03-10 SURVEY	GDC	51-120S	117-450W	FRAPA03WT
2200	290191		MBSV B	RAPA03-10 VACQUIER	GDC	52-340S	117-170W	FRAPA03WT
0660	310191		MBSV E	TRANSFORM FAULT	GDC	53-150S	119-060W	FRAPA03WT
1600	310191		MBSV B	RAPA03-11 WEST RAITT	GDC	53-500S	119-450W	FRAPA03WT
0300	020291		MBSV E	TRANSFORM FAULT	GDC	54-300S	121-400W	FRAPA03WT
1200	020291		MBSV B	RAPA03-12 HEEZEN	GDC	55-150S	120-450W	FRAPA03WT
1130	040291		MBSV E	TRANSFORM FAULT	GDC	56-300S	123-100W	FRAPA03WT

#GMT #TIME #	DDMMYY DATE	LOC-T TIME Z	SAMP CODE	SAMPLE IDENTIFIER	DISP CODE	LAT.	LONG.	CRUISE LEG-SHIP
0200	050291		MBSV B	RAPAO3-13 EAST RAITT	GDC	54-100S	117-500W	fRAPAO3WT
1120	070291		MBSV E	TRANSFORM FAULT	GDC	54-500S	121-100W	fRAPAO3WT
1710	070291		MBSV B	RAPAO3-14 SOUTHEAST	GDC	52-400S	115-000W	fRAPAO3WT
0810	090291		MBSV E	VACQUIER T. FAULT	GDC	53-350S	118-400W	fRAPAO3WT
0310	100291		MBSV B	RAPAO3-15 CENTRAL	GDC	49-150S	114-250W	fRAPAO3WT
1950	100291		MBSV E	MENARD T. FAULT	GDC	50-100S	116-550W	fRAPAO3WT
2300	100291		MBSV B	RAPAO3-16 SURVEY	GDC	48-250S	113-250W	fRAPAO3WT
0950	110291		MBSV E	RAPAO3-16 SURVEY	GDC	48-500S	114-050W	fRAPAO3WT
1510	110291		MBSV B	RAPAO3-17 SURVEY	GDC	47-370S	113-000W	fRAPAO3WT
1835	110291		MBSV E	RAPAO3-17 SURVEY	GDC	47-450S	113-150W	fRAPAO3WT
0510	120291		MBSV B	RAPAO3-18 46 DEG S	GDC	45-270S	112-220W	fRAPAO3WT
1730	120291		MBSV E	OFFSET, RAPAO3-05CONT	GDC	46-050S	112-500W	fRAPAO3WT
1700	130291		MBSV B	RAPAO3-19 SURVEY	GDC	40-390S	110-450W	fRAPAO3WT
0505	150291		MBSV E	41 DEG S OFFSET	GDC	41-455S	111-570W	fRAPAO3WT
**** SEA BEAM SWATH BOOKS ****								
2232	070191		MBSB B	SEABEAM SWATH BK-01	GDC	27-183S	109-297W	sRAPAO3WT
2320	080191		MBSB E	SEABEAM SWATH BK-01	GDC	32-044S	109-366W	sRAPAO3WT
2320	080191		MBSB B	SEABEAM SWATH BK-02	GDC	32-044S	109-366W	sRAPAO3WT
0753	110191		MBSB E	SEABEAM SWATH BK-02	GDC	27-569S	109-326W	sRAPAO3WT
0754	110191		MBSB B	SEABEAM SWATH BK-03	GDC	27-567S	109-326W	sRAPAO3WT
1157	170191		MBSB E	SEABEAM SWATH BK-03	GDC	34-214S	110-333W	sRAPAO3WT
1157	170191		MBSB B	SEABEAM SWATH BK-04	GDC	34-214S	110-333W	sRAPAO3WT
2039	190191		MBSB E	SEABEAM SWATH BK-04	GDC	35-549S	110-289W	sRAPAO3WT
2039	190191		MBSB B	SEABEAM SWATH BK-05	GDC	35-549S	110-289W	sRAPAO3WT
0444	220191		MBSB E	SEABEAM SWATH BK-05	GDC	41-546S	111-163W	sRAPAO3WT

#GMT #TIME	DDMMYY DATE	LOC TIME	T Z	SAMP CODE	SAMPLE IDENTIFIER			DISP CODE	LAT.	LONG.	CRUISE LEG-SHIP
0444	220191			MBSB	B	SEABEAM	SWATH	BK-06	GDC 41-546S	111-163W	sRAPAO3WT
1946	240191			MBSB	E	SEABEAM	SWATH	BK-06	GDC 49-363S	113-298W	sRAPAO3WT
1946	240191			MBSB	B	SEABEAM	SWATH	BK-07	GDC 49-363S	113-298W	sRAPAO3WT
1733	270191			MBSB	E	SEABEAM	SWATH	BK-07	GDC 49-121S	116-531W	sRAPAO3WT
1733	270191			MBSB	B	SEABEAM	SWATH	BK-08	GDC 49-121S	116-531W	sRAPAO3WT
1301	300191			MBSB	E	SEABEAM	SWATH	BK-08	GDC 52-575S	117-467W	sRAPAO3WT
1301	300191			MBSB	B	SEABEAM	SWATH	BK-09	GDC 52-575S	117-467W	sRAPAO3WT
2255	010291			MBSB	E	SEABEAM	SWATH	BK-09	GDC 53-528S	120-483W	sRAPAO3WT
2255	010291			MBSB	B	SEABEAM	SWATH	BK-10	GDC 53-528S	120-483W	sRAPAO3WT
1915	040291			MBSB	E	SEABEAM	SWATH	BK-10	GDC 54-398S	120-545W	sRAPAO3WT
2336	040291			MBSB	B	SEABEAM	SWATH	BK-11	GDC 54-363S	121-002W	sRAPAO3WT
1309	070291			MBSB	E	SEABEAM	SWATH	BK-11	GDC 54-046S	118-121W	sRAPAO3WT
1309	070291			MBSB	B	SEABEAM	SWATH	BK-12	GDC 54-046S	118-121W	sRAPAO3WT
0748	090291			MBSB	E	SEABEAM	SWATH	BK-12	GDC 52-445S	118-384W	sRAPAO3WT
0748	090291			MBSB	B	SEABEAM	SWATH	BK-13	GDC 52-445S	118-384W	sRAPAO3WT
0918	110291			MBSB	E	SEABEAM	SWATH	BK-13	GDC 48-277S	113-220W	sRAPAO3WT
0918	110291			MBSB	B	SEABEAM	SWATH	BK-14	GDC 48-277S	113-220W	sRAPAO3WT
1948	130291			MBSB	E	SEABEAM	SWATH	BK-14	GDC 41-234S	111-142W	sRAPAO3WT
1948	130291			MBSB	B	SEABEAM	SWATH	BK-15	GDC 41-234S	111-142W	sRAPAO3WT
0926	160291			MBSB	E	SEABEAM	SWATH	BK-15	GDC 35-545S	110-096W	sRAPAO3WT
0926	160291			MBSB	B	SEABEAM	SWATH	BK-16	GDC 35-545S	110-096W	sRAPAO3WT
1241	180291			MBSB	E	SEABEAM	SWATH	BK-16	GDC 27-126S	109-240W	sRAPAO3WT

#GMT #TIME	DDMMYY DATE	LOC TIME	T Z	SAMP CODE	SAMPLE IDENTIFIER	DISP CODE	LAT.	LONG.	CRUISE LEG-SHIP
---------------	----------------	-------------	--------	--------------	----------------------	--------------	------	-------	--------------------

*** MAGNETICS (TOTAL EARTH FIELD) RECORDS ***

1515	080191			MGRA B	MAGNETICS R-01	GDC	30-324S	109-341W	sRAPAO3WT
1754	210191			MGRA E	MAGNETICS R-01	GDC	40-284S	111-280W	sRAPAO3WT
1800	210191			MGRA B	MAGNETICS R-02	GDC	40-293S	111-278W	sRAPAO3WT
1726	020291			MGRA E	MAGNETICS R-02	GDC	55-509S	122-484W	sRAPAO3WT
1735	020291			MGRA B	MAGNETICS R-03	GDC	55-496S	122-483W	sRAPAO3WT
1704	140291			MGRA E	MAGNETICS R-03	GDC	41-097S	111-387W	sRAPAO3WT
1707	140291			MGRA B	MAGNETICS R-04	GDC	41-096S	111-380W	sRAPAO3WT
1531	170291			MGRA E	MAGNETICS R-04	GDC	30-448S	109-300W	sRAPAO3WT

*** SEA MARC II SIDE SCAN RECORDS ***

1450	170191			DPSM B	SEAMARK DEPLOYMENT	UHI	34-437S	110-303W	sRAPAO3WT
1208	200191			DPSM E	SURVEY RAPA03-01	UHI	36-528S	110-373W	sRAPAO3WT
1955	200191			DPSM B	SEAMARK DEPLOYMENT	UHI	37-374S	110-573W	sRAPAO3WT
1900	300191			DPSM E	SURVEY RAPA03-02	UHI	52-513S	117-441W	sRAPAO3WT
1615	310191			DPSM B	SEAMARK DEPLOYMENT	UHI	54-062S	119-471W	sRAPAO3WT
1708	040291			DPSM X	SURVEY RAPA03-03	UHI	54-409S	120-555W	sRAPAO3WT

*** BATHY THERMOGRAPH RECORDS ***

2100	070191			TGRC B	THERMOGRAPHS 1-10	GDC	27-085S	109-263W	sRAPAO3WT
1406	180291			TGRC E	THERMOGRAPHS 1-10	GDC	27-117S	109-239W	sRAPAO3WT

*** CONTINUOUS COMPUTER RECORDED GRAVITY ***

2100	070191			GVCR B	GRAVITY DATA	GDC	27-085S	109-263W	sRAPAO3WT
1300	180291			GVCR E	COMPUTER LOGGED	GDC	27-117S	109-239W	sRAPAO3WT

#GMT #TIME	DDMMYY DATE	LOC TIME	T Z	SAMP CODE	SAMPLE IDENTIFIER	DISP CODE	LAT.	LONG.	CRUISE LEG-SHIP
---------------	----------------	-------------	--------	--------------	----------------------	--------------	------	-------	--------------------

*** EXPENDABLE BATHYTHERMOGRAPH RECORDS ***

1420	080191			BTXP	XBT 0001 PROBE T-6	GDC	30-221S	109-338W	sRAPAO3WT
1338	090191			BTXP	XBT 0002 PROBE T-6	GDC	34-380S	110-149W	sRAPAO3WT
1556	160191			BTXP	XBT 0003 PROBE T-6	GDC	30-305S	109-589W	sRAPAO3WT
1508	170191			BTXP	XBT 0004 PROBE T-6	GDC	34-461S	110-313W	sRAPAO3WT
1335	200191			BTXP	XBT 0005 PROBE T-6	GDC	37-021S	110-384W	sRAPAO3WT
1735	210191			BTXP	XBT 0006 PROBE T-6	GDC	40-255S	111-270W	sRAPAO3WT
1758	220191			BTXP	XBT 0007 PROBE T-6	GDC	43-539S	111-517W	sRAPAO3WT
2008	230191			BTXP	XBT 0008 PROBE T-6	GDC	47-082S	113-078W	sRAPAO3WT
1556	280191			BTXP	XBT 0009 PROBE T-6	GDC	50-173S	117-042W	sRAPAO3WT
1506	310191			BTXP	XBT 0010 PROBE T-6	GDC	54-033S	119-397W	sRAPAO3WT
1515	310191			BTXP	XBT 0011 PROBE T-6	GDC	54-037S	119-406W	sRAPAO3WT
1706	020291			BTXP	XBT 0012 PROBE T-6	GDC	55-539S	122-489W	sRAPAO3WT
2038	060291			BTXP	XBT 0013 PROBE T-6	GDC	54-283S	118-351W	sRAPAO3WT
1557	080291			BTXP	XBT 0014 PROBE T-6	GDC	53-131S	116-338W	sRAPAO3WT
1909	090291			BTXP	XBT 0015 PROBE T-6	GDC	50-483S	117-273W	sRAPAO3WT
1705	110291			BTXP	XBT 0016 PROBE T-6	GDC	47-406S	113-019W	sRAPAO3WT
1656	130291			BTXP	XBT 0017 PROBE T-6	GDC	41-490S	111-165W	sRAPAO3WT
1419	140291			BTXP	XBT 0018 PROBE T-6	GDC	41-137S	111-298W	sRAPAO3WT
1737	150291			BTXP	XBT 0020 PROBE T-6	GDC	38-434S	110-296W	sRAPAO3WT
1538	160291			BTXP	XBT 0021 PROBE T-6	GDC	35-082S	109-460W	sRAPAO3WT
1553	170291			BTXP	XBT 0022 PROBE T-6	GDC	30-423S	109-299W	sRAPAO3WT

*** END SAMPLE INDEX