

# HOTEL DEL CORONADO

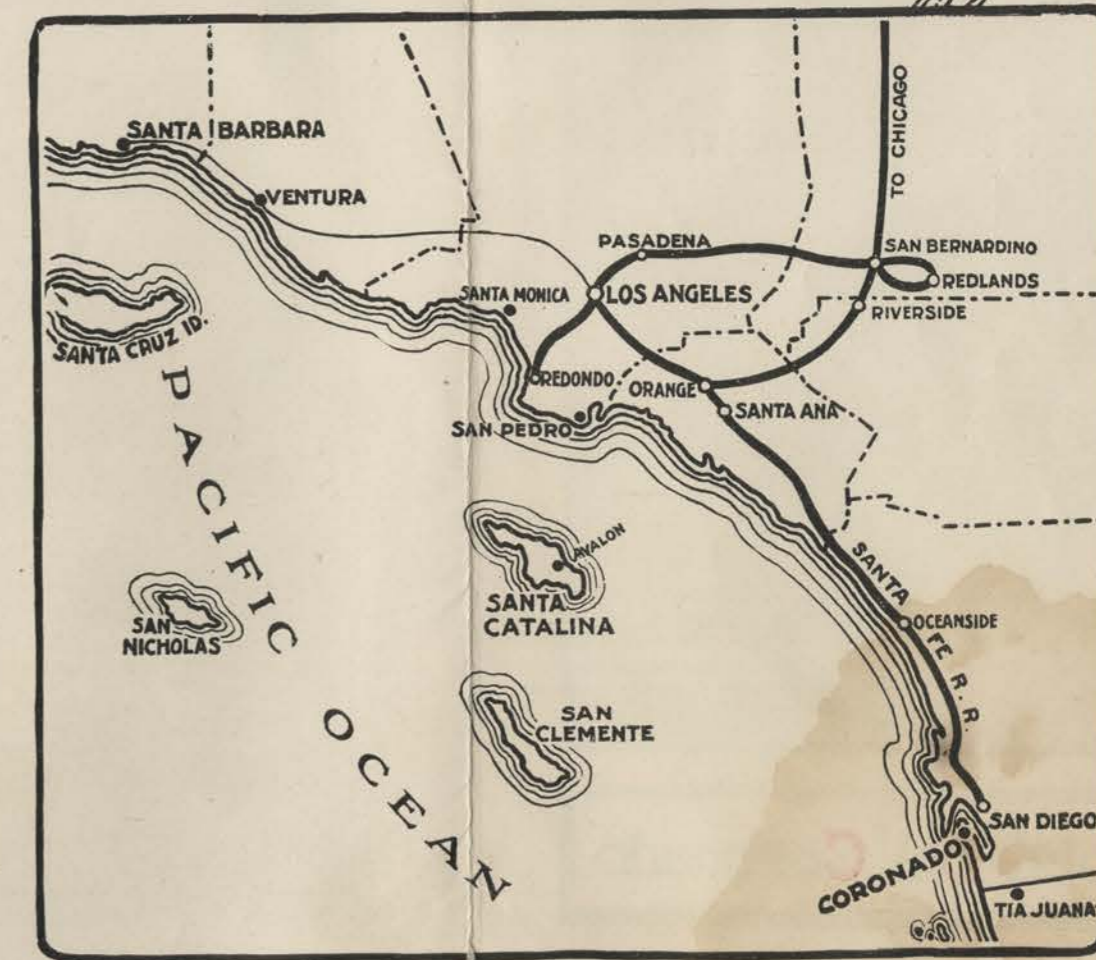
---

---



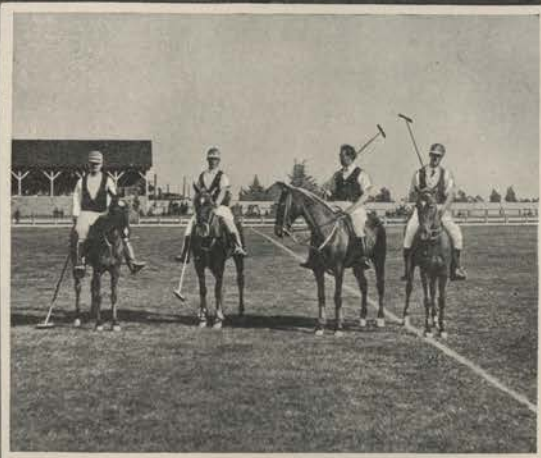


OTEL DEL CORONADO, "the crown of the Pacific," lies like a dream castle out on the point of a picturesque peninsula, down in the southwesternmost corner of the United States. On one side of this peninsula are the still, warm waters of San Diego Bay and on the other side the foam-crested breakers of the great Pacific roll up on the sandy beach, almost to the doors of the hotel. Across the bay to the eastward the bustling American city of San Diego nestles under the foothills which stretch out into the tree-shaded canyons and towering mountain peaks. Toward the north is Point Loma where the government naval reservation, with a great wireless telegraph station and many other points of interest are located. A few miles to the south from Coronado lies Mexico, "the land of *manana*," and a thousand interesting scenes and sights are easily accessible. ¶ It would be impossible to discover anywhere a more hospitable caravansary or one that appeals more strongly to the pleasure seeker, both in summer and winter. Here in this land of perpetual sunshine out-of-door sports reign supreme and yachting, fishing, bathing, tennis, polo, etc., are ever and always in vogue, and there are many clubs where Coronado guests are given a cordial welcome and made to feel at home. ¶ Hotel del Coronado is famed for its brilliant balls, and many are the delightful dancing parties given at the hotel during the season. The social life is a feature that is carefully looked after. There is nowhere in the world a resort which offers its guests such a variety of entertainment and wholesome amusement, and while the service is all of the very highest order the rates are extremely moderate. ¶ Coronado is reached only by the Santa Fe Railway from Los Angeles, 127 miles to the north. Complete information and literature furnished upon application to any Santa Fe agent.

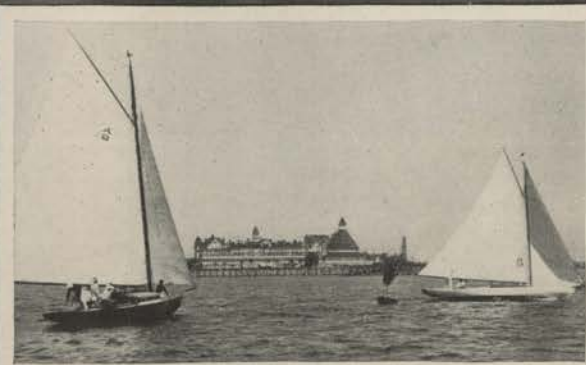




HOTEL DEL CORONADO



POLO AND TENNIS AT CORONADO



e. 98-1803

CIX98

SPC  
Have  
E  
889  
CG7  
H65  
C900



**H**otel **D**el **C**oronado