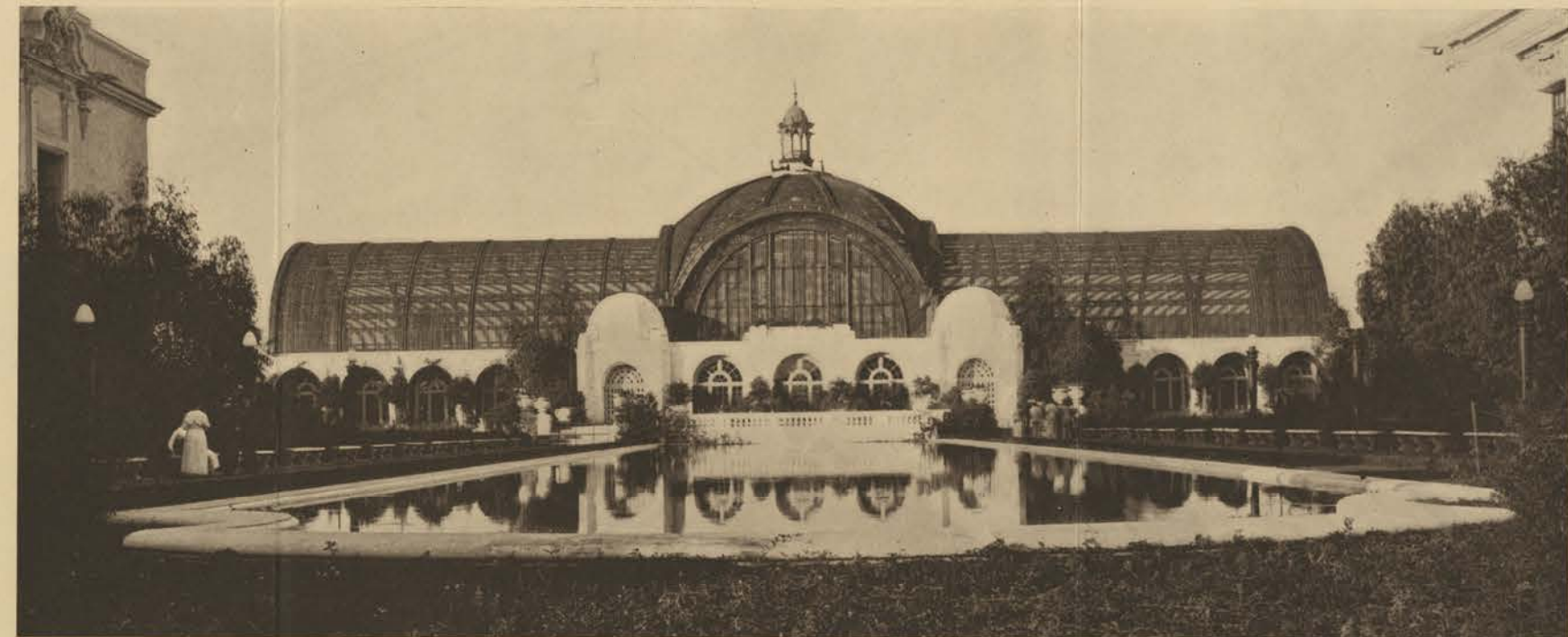
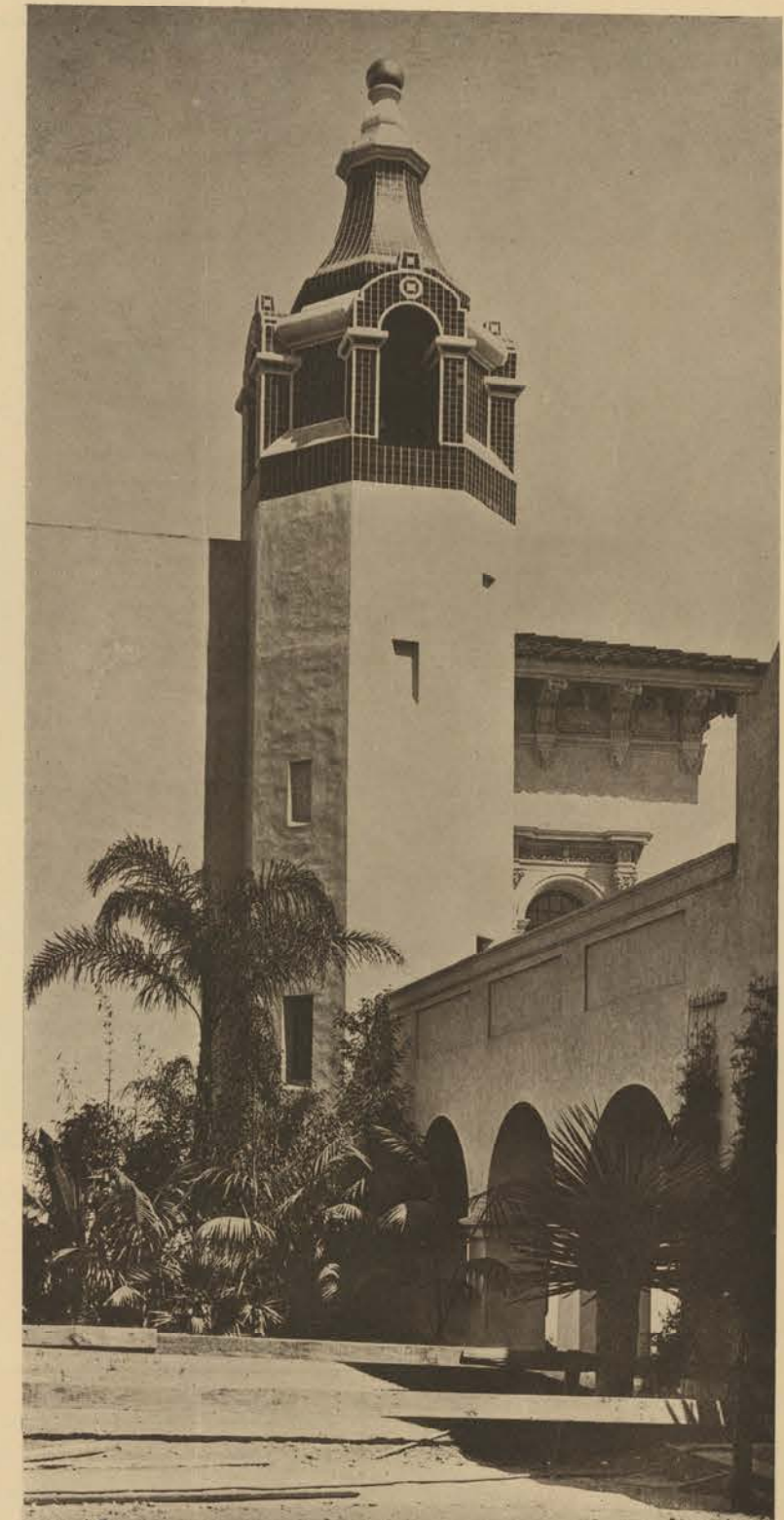




THE EXPOSITION BEAUTIFUL
SAN DIEGO
1916



Botanical Building.



Patlo Science and Arts Building.

THE EXPOSITION BEAUTIFUL
SAN DIEGO
1916



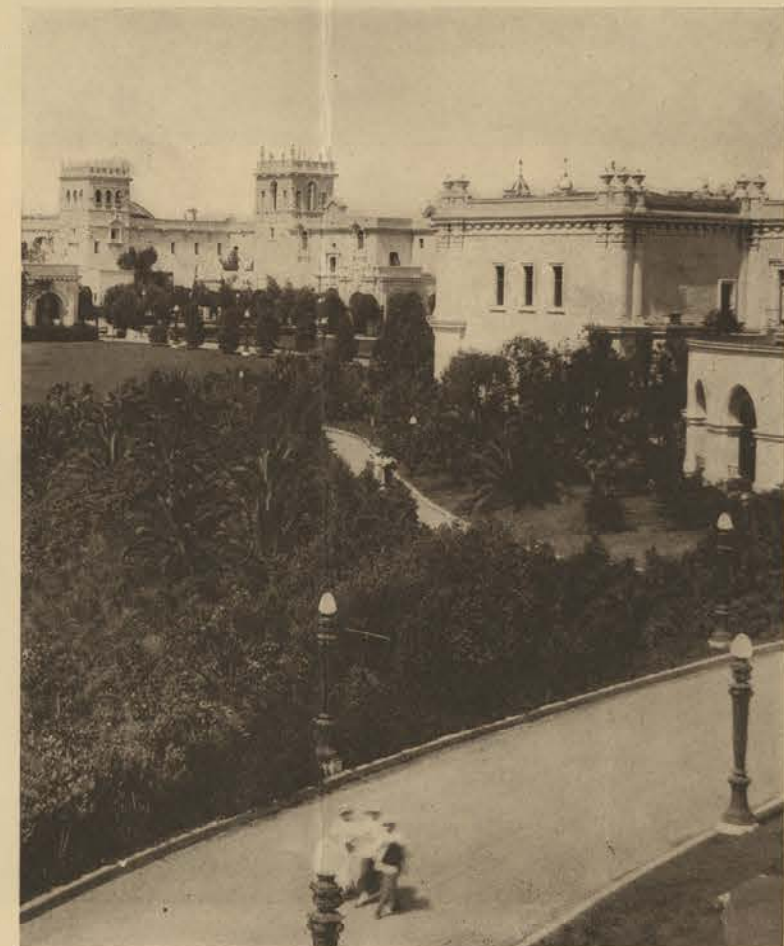
The approach to the West Gate of San Diego's Panama-California Exposition, with the beautiful California Building in the background. Across the Puente Cabrillo, here shown, through the many thousands of visitors who come to enjoy the beauties of San Diego's incomparable Exposition.



Front Entrance Foreign Arts Building.



Some of the Beautiful Spots in the Exposition Grounds.



The Mission Bells of the Arts and Crafts Building, San Diego Exposition



A Glimpse of the Buildings Surrounding the Plaza.



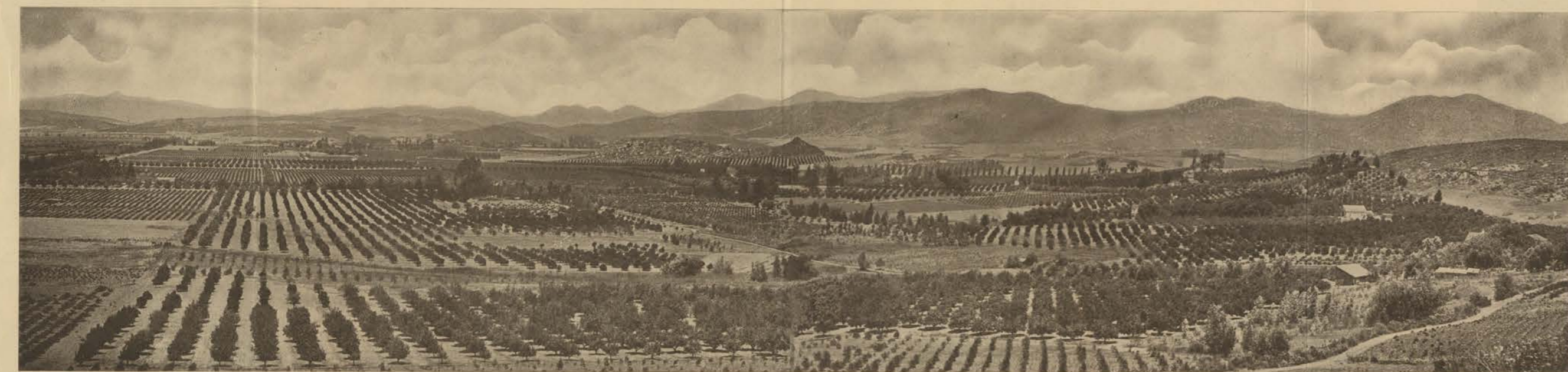
Magnificent Seven Counties Hall at San Diego Exposition. One of the Don't-Miss Places of the Exposition Beautiful.



Sp Co 11
Goodman Map
F
669
.522
E47
1916



HARBOR AND CITY OF SAN DIEGO



Where Fruits and Flowers Bloom in the Beautiful El Cajon Valley, San Diego County, fifteen miles east of San Diego

San Diego Bay has an area of twenty-two square miles; is the first Pacific American Port of Call north of the Panama Canal; is one of the ten great natural harbors of the world and is absolutely free from storms at all seasons of the year. San Diego, in July, 1915, had a metropolitan population of 109,195, and is the greatest all-year-round natural playground of America.



Escondido Valley, the Sun-kissed Vale, thirty-four miles north of San Diego