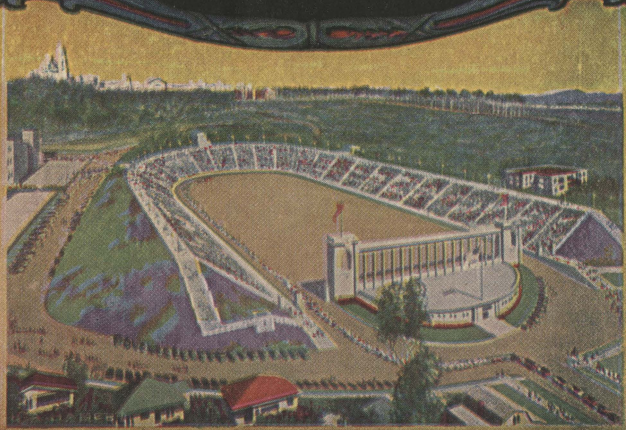


SAN DIEGO & ARIZONA RAILWAY

SAN DIEGO SHORT LINE



THE STADIUM SAN DIEGO, CALIFORNIA

RS

SAN DIEGO AND ARIZONA RAILWAY



California's Newest Scenic Marvel, the Wonderful Carrizo Gorge. For Eleven Miles the San Diego and Arizona Railway Traverses this Giant Abyss and every turn of the Train Affords Thrilling Views

SAN DIEGO AND ARIZONA RAILWAY

LOCAL SCHEDULE

No. 52-51—Coach: between San Diego, El Centro, Calexico and Yuma. Meals at Calexico. Mixed Train.
 No. 4-3—Standard Sleeper: San Diego, and Chicago. Coach: San Diego and Yuma. Observation and Dining Car: San Diego and Chicago. Via Calexico.
 No. 102-101—Standard Sleeper: San Diego and New Orleans. Coach: San Diego and Niland. Observation and Dining Car: San Diego and New Orleans Via Niland.

Read Down		Mls.	CORRECTED TO SEPT. 5, 1925 STATIONS		Elev	Read Up				
52-148 Daily	4-150 Daily		102-47 Daily	147-51 Daily		3-149 Daily	48-101 Daily			
9 35	10 45	8 00	..	Lv San Diego.....	S.D.&A.	Ar	10	5 25	3 30	9 20
10 04	11 01	8 16	..	5lv National City.....	"	Lv	..	4 54	3 16	9 06
10 12	11 07	8 22	..	7lv Chula Vista.....	"	Lv	..	4 47	3 11	9 01
10 20	11 13	11lv Palm City.....	"	Lv	..	4 26
10 30	11 20	8 35	..	16Ar Tia Juana (u.s.).....	"	Lv	100	4 36	..	8 45
10 40	11 25	8 39	..	16lv Tijuana (Mex.).....	T.&T.	Ar	..	4 15	2 50	8 40
11 00	11 38	24lv Garcia.....	"	Lv	210	3 54	2 37	..
11 37	12 04	37lv Redondo.....	"	Lv	765	3 21	2 14	..
12 33	12 44	9 53	..	53lv Tecate.....	"	Lv	1690	2 38	1 43	7 32
12 55	12 59	10 07	..	60lv Lindero.....	"	Lv	2120	2 15	1 28	7 17
1 17	1 16	10 21	..	66lv Campo (u.s.).....	S.D.&A.	Ar	2590	1 59	1 16	7 05
2 22	1 59	11 02	..	85lv Hipass.....	"	Lv	3660	1 04	1 12	3 38
2 52	2 20	11 20	..	93lv Jacumba Hot Springs.....	"	Lv	2830	12 12	12 14	6 02
3 20	2 43	101lv Carriso Gorge.....	"	Lv	2380	11 40	11 43	..
3 30	3 14	110lv Dos Cabezas.....	"	Lv	1670	..	11 10	5 00
4 37	3 42	123lv Coyote Wells.....	"	Lv	290	9 41	10 35	4 23
5 00	3 54	12 50	..	130lv Plaster City.....	"	Lv	..	9 04	10 22	4 10
5 18	4 02	134lv Dixieland.....	"	Lv	-10	8 53	10 15	..
5 41	4 10	1 04	..	140lv Seeley.....	"	Lv	-44	8 40	10 07	3 54
6 15	4 25	1 20	..	148Ar El Centro.....	"	Lv	-49	8 15	9 50	3 40
..	..	1 25	Ar	3 30
..	..	1 32	Ar	3 22
..	..	1 47	Ar	3 07
..	..	2 02	Ar	2 49
..	..	2 15	Ar	2 35
6 45	4 30	148Lv El Centro.....	Sou.Pac.	Ar	-49	7 55	9 45	..
7 10	4 48	157Ar Calexico.....	"	Lv	-2	7 30	9 30	..
8 15	4 55	157lv Calexico.....	"	Ar	-2	4 40	9 25	..
8 32	5 00	158lv Mexicali (Mex.).....	"	Lv	..	4 32	9 20	..
10 52	6 26	208lv Algodones.....	"	Lv	..	2 15	7 54	..
11 04	6 30	209lv Cantu (u.s.).....	"	Lv	..	2 00	7 50	..
11 37	6 50	218Ar Yuma (p.t.).....	"	Lv	..	1 35	7 30	..

LAKESIDE LINE

Lv San Diego for Lakeside..... \dagger 7 51 am \dagger 12 10 pm \dagger 2 30 pm \dagger 5 10 pm \dagger 9 20 pm
 Lv San Diego for La Mesa..... \dagger 7 51 am \dagger 12 10 pm \dagger 2 30 pm \dagger 5 10 pm \dagger 9 20 pm
 \dagger Daily \dagger Daily except Sunday * Wednesday, Saturday and Sunday only

GOLDEN STATE LIMITED TO EL PASO, KANSAS CITY, ST. LOUIS, DES MOINES, MINNEAPOLIS, ST. PAUL AND CHICAGO

No. 4—"Golden State Limited" eastbound. Standard Sleepers San Diego to Kansas City and Chicago, Yuma to St. Louis.—Coach, San Diego to Yuma.—Observation and Dining Car, San Diego to Chicago. No change of Trains necessary.
 No. 3—"Golden State Limited" westbound. Standard Sleepers, Chicago and Kansas City to San Diego.—St. Louis, St. Paul, Minneapolis and Des Moines to Yuma. No change of trains necessary. Coach, Yuma to San Diego. Observation and Dining Car, Chicago to San Diego.

4 Daily	Mls.	STATIONS			Elev	3 Daily		
10 45	..	Mo	Lv San Diego.....	S.D.&A.	Ar	Th	10	3 30
4 30	148	Mo	Lv El Centro.....	Sou.Pac.	Lv	Th	-49	9 50
6 50	218	Mo	Ar Yuma (p.t.).....	"	Lv	Th	139	7 30
7 25	218	Mo	Lv Yuma (p.t.).....	"	Lv	Th	139	7 18
1 05	384	Tu	Lv Maricopa.....	"	Lv	Th	1172	3 25
3 55	470	Tu	Lv Tucson.....	"	Lv	Th	2390	1 10
7 40	593	Tu	Lv Douglas.....	"	Lv	We	..	9 30
1 25	782	Tu	Ar El Paso (M.T.).....	"	Lv	We	3713	3 25
1 40	782	Tu	Lv El Paso (M.T.).....	"	Ar	We	3713	2 50
7 00	1733	We	Ar Kansas City (c.t.).....	C.R.I.&P.	Tu	..	766	11 20
10 00	1733	We	Lv Kansas City.....	C.R.I.&P.	Ar	Tu	766	7 30
7 37	2029	Th	Ar St. Louis.....	"	Lv	Mo	600	10 00
11 30	1733	We	Lv Kansas City.....	C.R.I.&P.	Ar	Tu	766	7 20
7 00	1963	Th	Ar Des Moines.....	"	Lv	Tu	..	12 20
3 25	2223	Th	Ar St. Paul.....	"	Lv	Mo	..	4 35
4 20	2234	Th	Ar Minneapolis.....	"	Lv	Mo	..	4 00
8 00	1733	We	Lv Kansas City.....	C.R.I.&P.	Ar	Tu	766	10 30
10 00	2249	Th	Ar Chicago.....	"	Lv	Mo	603	8 30

SUNSET LIMITED AND SUNSET EXPRESS TO EL PASO, SAN ANTONIO, HOUSTON AND NEW ORLEANS

No. 102-101—Standard Sleeper: San Diego and New Orleans. Coach: San Diego and Niland. Observation and Dining Car: San Diego and New Orleans Via Niland.
 No. 110-109—Coaches: San Diego and New Orleans. Tourist Sleeper: El Centro and Washington, D.C., change at El Centro or Yuma.

4-110 Daily	102 Daily	Mls.	102	STATIONS		101	Elev	101 Daily	109-3 Daily		
10 45	8 00	Mo	Lv San Diego.....	S.D.&A.	Ar	We	10	9 20	3 30
5 10	1 25	148	..	Mo	Lv El Centro.....	Sou.Pac.	Lv	We	-49	3 40	9 50
..	2 15	180	..	Mo	Ar Niland.....	"	Lv	We	-130	2 35	..
..	2 28	180	..	Mo	Lv Niland.....	"	Lv	We	-130	1 47	..
7 40	4 05	245	..	Mo	Lv Yuma (p.t.).....	"	Lv	We	139	12 09	7 30
2 10	9 35	410	..	Mo	Lv Maricopa.....	"	Lv	We	1173	8 26	2 50
5 00	11 45	470	..	Mo	Lv Tucson.....	"	Lv	We	2390	6 15	12 20
3 25	8 45	808	..	Tu	Ar El Paso (M.T.).....	"	Lv	Tu	3713	9 15	3 05
5 00	10 00	808	..	Tu	Lv El Paso (c.t.).....	"	Ar	Tu	3713	10 00	3 45
1 30	3 20	1429	..	We	Lv San Antonio.....	"	Lv	Mo	661	4 40	7 30
8 00	9 20	1639	..	We	Lv Houston.....	"	Lv	Mo	64	10 40	11 30
7 35	7 35	2002	..	We	Ar New Orleans.....	"	Lv	Mo	7	12 10	11 30

SAN DIEGO-PHOENIX SERVICE

4-31 Daily	STATIONS		38-11 -3 Daily	34-101 Daily			
10 45	Mo	Lv San Diego.....	S.D.&A.	Tu	3 30	9 20	
4 25	Mo	Ar El Centro.....	"	Lv	Tu	9 50	3 40
4 30	Mo	Lv El Centro.....	Sou.Pac.	Ar	Tu	9 45	3 30
1 05	Tu	Ar Maricopa.....	"	Lv	Mo	2 15	8 26
7 30	Tu	Lv Maricopa.....	"	Ar	Mo	12 35	7 15
8 45	Tu	Ar Phoenix.....	"	Lv	Mo	11 30	6 10

No. 4-3—Standard Sleeper: between San Diego and Phoenix.

No. 34-101—Change at Maricopa. Thru Pullman Seat Space Maricopa to San Diego.

SOUTHERN PACIFIC CONNECTIONS SAN DIEGO-FT. WORTH-DALLAS SERVICE

102-15 -24 Daily	STATIONS			16-23 109-3 Daily		
8 00	Mo	Lv San Diego.....	S.D.&A.	Ar	We	3 30
1 25	Mo	Lv El Centro.....	"	Lv	We	9 50
2 15	Mo	Ar Niland.....	Sou.Pac.	Lv	We	..
2 28	Mo	Lv Niland.....	"	Ar	We	..
4 05	Mo	Lv Yuma.....	"	Lv	We	7 30
8 00	We	Lv San Antonio.....	"	Lv	Mo	7 30
7 20	We	Ar Ft. Worth.....	"	Lv	Mo	8 00
6 35	We	Ar Dallas.....	"	Lv	Mo	9 10

No. 102—Thru Pullman Niland to Dallas and Ft. Worth.

No. 16-23-109—Thru Pullman Dallas and Ft. Worth to Yuma and El Centro. Change trains at Yuma or El Centro.

SOUTHERN PACIFIC CONNECTIONS AT NILAND AND YUMA Coach and Tourist Sleeper Service

No. 102—"Sunset Limited" eastbound makes connection at Niland with "Golden State Express" No. 12. Thru Standard and Tourist Sleepers, Niland to Kansas City and Chicago.—Standard Sleepers Niland to Minneapolis, St. Paul and Memphis.—Coach, San Diego to Kansas City and Chicago. Dining Car, San Diego to Chicago.

No. 11—"Golden State Express" westbound makes connection at Yuma with S. D. & A. No. 3. Thru Tourist Sleepers and Coaches, Chicago and Kansas City to Yuma. Thru Standard Sleeper Memphis to Yuma. Lv Yuma 7:30 a.m., Ar San Diego 3:30 p.m.

No. 109—"Sunset Express" westbound makes connection at Yuma with S. D. & A. No. 3. Thru Tourist Sleepers and Coaches, New Orleans, San Antonio and Houston to Yuma. Lv Yuma 7:30 a.m., Ar San Diego 3:30 p.m.

TEXAS AND PACIFIC CONNECTIONS

2 Daily	Mls.	STATIONS		1 Daily	5 Daily		
6 00	0	Lv	El Paso (M.T.).....	(M.T.)	Ar	10 55	8 00
3 40	615	Ar	Fort Worth.....	"	Lv	2 40	11 10
5 05	647	Ar	Dallas.....	"	Lv	1 15	10 00

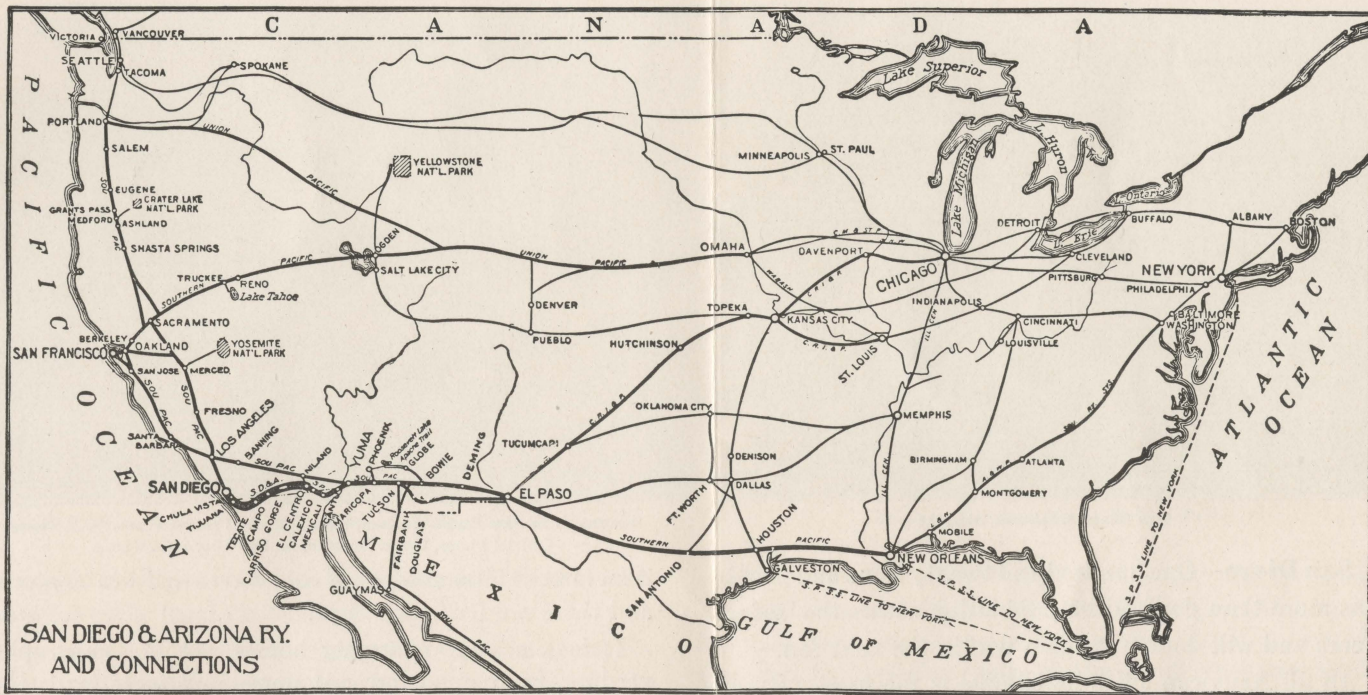
SANTA FE CONNECTIONS

79	71	73	75	STATIONS		78	72	74	76	
2 01	9 00	2 00	6 30	Lv	San Diego.....	Ar	5 30	12 40	6 00	10 00
7 15	12 50	5 40	9 50	Ar	Los Angeles.....	Lv	1 00	8 50	2 30	6 40

REFERENCE NOTES

Black Type denotes P. M. Light Type, A. M. f—Trains stop on flag to receive or discharge passengers. M. T.—Mountain Time. P. T.—Pacific Time. C. T.—Central Time.

THE WAY TO SEE CALIFORNIA IS TO SEE SAN DIEGO FIRST



**SAN DIEGO & ARIZONA RY.
AND CONNECTIONS**

For information regarding freight rates, passenger fares, tickets, baggage and pullman reservation, call upon or address the following representatives:

SAN DIEGO AND ARIZONA RAILWAY

324 Broadway or 602 Spreckels Building, San Diego, Calif.
F. B. DORSEY Traffic Manager
A. D. HAGAMAN Assistant General Freight and Passenger Agent

EL CENTRO, CALIFORNIA

CHAS. F. MATLIN, T. F. & P. Agent, Southern Pacific Station

SOUTHERN PACIFIC LINES

SAN FRANCISCO, CALIF., Southern Pacific Building, 65 Market St.,
F. S. McGinnis, Pass. Traffic Mgr. **F. C. Lathrop, Asst. Pass. Traffic Mgr.**
LOS ANGELES, CALIF., Pacific Electric Building, 6th and Main Sts.,
C. L. McFaul, Asst. Pass. Traffic Mgr. **F. E. Watson, General Pass. Agent**
PORTLAND, ORE. **John M. Scott, Assistant Passenger Traffic Manager**
HOUSTON, TEXAS. **J. A. Ormandy, General Passenger Agent**
NEW ORLEANS, LA. **W. C. McCormick, General Passenger Agent**
TUCSON, ARIZ., E. J. Fenchurch **T. General Freight and Passenger Agent**
EL CENTRO, CALIF. **C. W. Runge, District Freight and Passenger Agent**
EL PASO, TEXAS, 206 N. Oregon St. **Eugene Fox, Asst. Traffic Manager**

GENERAL AND DISTRICT AGENTS

ATLANTA, GA., 319-320 Healey Building. **D. Asbury, General Agent**
BALTIMORE, Md., Union Trust Building. **W. B. Johnson, General Agent**
BIRMINGHAM, ALA., 406 Woodward Building. **S. J. Brown, General Agent**
BOSTON, MASS., 209 Old South Building. **E. S. Leavitt, General Agent**
BUFFALO, N. Y., Ellicott Square Building. **G. H. Vogel, General Agent**
CHICAGO, ILL., S. P. Bldg., 35 W. Jackson Blvd. **C. T. Collett, General Agent**
CINCINNATI, O., Wiggins Building. **Robert McDowell, General Agent**
CLEVELAND, O., 415 Hippodrome Bldg., Euclid Ave. **E. G. Cook, General Agent**
DENVER, COLO., Denham Building. **E. H. Williams, General Agent**
DETROIT, MICH., 217 Majestic Building. **W. W. Hale, General Agent**
INDIANAPOLIS, IND., Merchants Bank Building. **Lyon Liston, General Agent**
KANSAS CITY, Mo., Railway Exchange Bldg. **F. W. Sedgwick, General Agent**
MEMPHIS, TENN., Exchange Building. **L. C. Bouchard, General Agent**
MEXICALI, MEXICO, Inter-California Ry. (S.P.) **E. G. Burdick, Genl. Mgr.**
NEW YORK, N. Y., 165 Bdwy. **A. J. Poston, Genl. Agt., Passenger Department**
OKLAHOMA CITY, OKLA., 909 Colcord Bldg. **J. A. Eads, General Agent**
PHILADELPHIA, PA., 1602 Chestnut St. **F. T. Brooks, General Agent**
PHOENIX, ARIZ., Adams and Central. **R. P. Kyle, Dist. Frt. and Pass. Agent**
PITTSBURGH, PA., Chamber of Commerce Bldg. **G. G. Herring, General Agent**
SALT LAKE CITY, UTAH, 41 S. Main St. **Press Bancroft, General Agent**
SAN ANTONIO, TEX., 613 Navarro St. **Tom Hood, Div. Frt. and Pass. Agent**
SEATTLE, WASH., 314 Union St. **B. C. Taylor, General Agent**
ST. LOUIS, Mo., S. P. Bldg., 312-314 N. Sixth St. **L. B. Banks, General Agent**

FOREIGN AGENCIES

GENOA, (4) ITALY. Via Roma Sa. . . **Brizzolesi, Kemsley & Millbourn, Genl. Agents**
HAMBURG, GERMANY. 18 Glockengisserwall. **G. Ruhr, General Agent**
HAVANA, CUBA. 106 Cuba Street. **W. E. Ridgeway, General Agent**
LIVERPOOL, ENGLAND. 21 Water Street. **Thomas Cooper, General Agent**
LONDON, ENGLAND. 49 Leadenhall Street. **R. G. Bonsor, Agent**
MEXICO CITY, MEX., Avenida Cinco de Mayo 32. . . **Geo. F. Jackson, Genl. Agent**
MONTERREY, MEX., Langstroth Bldg., Escobedo and Padre Mier Sts.,
Alfonso Marquez, Traveling Agent
PARIS, FRANCE. 3 Rue Tronchet. **H. Desmidt, General Agent**

USEFUL INFORMATION

TICKET OFFICES—At important stations are open thirty minutes before departure of trains. Passengers should purchase tickets before boarding trains.

LOST TICKETS—Railway Companies are not responsible for loss or stolen tickets. Give notice of your loss to conductor. Pay your fare to him or purchase another ticket from first ticket station and take receipt. When you reach your destination write to the General Passenger Agent of the road of which you bought your ticket, enclose receipt and explain the circumstances. If your ticket is found and returned unused, the company will refund your money.

CHILDREN'S FARES—Children under 5 years of age when accompanied by parents or guardians, free. Children 5 years of age and over, but under 12 years of age, half fare. Those 12 years of age and over, full fare.

ADJUSTMENT OF FARES—In case of disagreement with conductor concerning tickets, privileges allowed, etc., passengers should pay fare, take receipt, and refer the case for adjustment to the Passenger Traffic Manager, San Diego, Calif.

SPECIAL TEN DAYS' STOPOVER—By application to conductor and deposit of railroad ticket with agent, stop-over not exceeding ten days will be permitted en route at any or all of the following points on one way and thirty-day round trip tickets, and on other tickets when authorized by the tariff under which sold, namely: San Diego, Calif.; Tia Juana, Calif. and Jacumba Hot Springs, Calif.

BAGGAGE—No single piece of baggage exceeding 250 pounds in weight, or 72 inches in greatest dimension, or single shipments exceeding \$2,500 in value, will be checked. Free allowances subject to tariff stipulations as to contents, weight, value and size. Excess value to be declared and paid for at time of checking.

SAN DIEGO AND ARIZONA RAILWAY

SAN DIEGO AND ARIZONA RAILWAY



San Diego Business District

San Diego—One hundred and twenty thousand people, has more than doubled its population within the last ten years and will double it again within the next ten.

Of all American cities its climate is the most even and desirable. Winters are mild and summers are cool. The highest and lowest temperature on an average winter day are 62° and 46°. In summer there is a mean of 72° in the day time and 64° in the night time. January mean temperature is 54°, which is only 14° cooler than July. There



Entrance to San Diego Harbor, Home of the Pacific Fleet, U. S. Navy
Official Photo, Naval Air Station, San Diego, California

is an almost total absence of cold waves and winter storms and there are few rainy days.

It is a city of charming homes, set in semi-tropical verdure, built upon terraced slopes and table lands that face the sunset sea, with a background of granite-walled mountains.

The hotels, first-class and of modern pretensions, are excellent and in variety. Apartment houses care for thousands of winter visitors. Coronado Tent City, at

SAN DIEGO AND ARIZONA RAILWAY



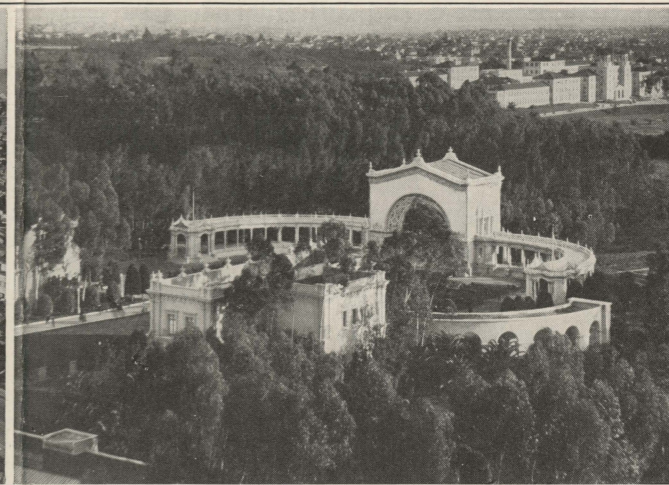
Sunset Cliffs and City of La Jolla, a Suburb of San Diego, California

Coronado Beach, cares for thousands more in the summer; there are daily band concerts.

Commercially, San Diego is rapidly becoming one of the great manufacturing and distributing seaports of the Pacific.

At this time, in added water supply, good roads and new docks, \$8,000,000 is being expended and private enterprise is spending double that amount.

It is now the nearest seaport city in California by rail



The Great Outdoor Organ, Balboa Park

to the East. The \$19,000,000 San Diego and Arizona Railroad has made it the terminus of the great transcontinental short line; fewer miles between the Atlantic and the Pacific, over the route of the least resistance and the ways of the Golden State Limited and the Sunset Limited.

North Island—Connecting link between the sea, the land and the air; the two great western bases of aviation, army and navy; \$5,000,000 recently spent on



Imperial Valley Cotton Ready for Shipment



Alfalfa and Dairy Scene, Imperial Valley



An Imperial Valley Irrigation Canal



Date-Growing in the Imperial Valley

THE WAY TO SEE CALIFORNIA IS TO SEE SAN DIEGO FIRST

THE WAY TO SEE CALIFORNIA IS TO SEE SAN DIEGO FIRST

permanent improvements and work still under way; great dirigibles and hundreds of planes.

Only a few minutes' ride from the business center of the City of San Diego and open to visitors.

Two hundred and sixteen aeroplanes have been in flight over the City of San Diego at one time; every day they are "up in the air."

San Diego Harbor—The land-locked home of 103 battleships and destroyers, the great Pacific fleet of the United States.

The greatest haven of our navy; \$27,000,000 has been spent by the government on additions to marine facilities.

Nearest American harbor on the Pacific to the Panama Canal; admits the vessels of greatest draught; free from storms; room for all the commerce of the Pacific; miles of available water front.

Balboa Park—1400 acres of trees, lawns and flowers in the heart of the city.

Here are the permanent palaces which formed a part of the Panama-California International Exposition held in 1915-16.

An immense pipe organ in a concrete amphitheater (a gift to the city by J. D. and A. B. Spreckels) is in this park; it is the finest outdoor organ ever built. Free organ recitals are given every day in the year, excepting Mondays, for the entertainment of visitors.

Imperial Valley—Trimmed with the jewel-colored mountains of the desert; set below sea level at the delta of the greatest of western rivers; watered with the rains and snows of the Rocky Mountains running swiftly through the Grand Canyon of the Colorado to the miracle valley of the desert, a great semi-tropic garden; wide fields of

cotton, mile after mile; cantaloupes covering thousands of acres; alfalfa knee deep in February, waist high in June, as far as the eye may see; date palms, lemons, grapefruit; cities shiningly new, strung along the railroad—all this a transformation from the unwatered, uninhabited, iridescent



Spanish Dancers

"bottom of the bowl" of the Colorado desert in twenty years, to a home place of 60,000 people, having an annual soil production measured at approximately \$65,000,000.

Carriso Gorge—Eleven miles long and takes its name from a grass in its depths which is used by Indians in basket-work.

Across its precipices, its gulfs and crags, and its mountain pinnacles, are spread gorgeous blanket-patterns of color, measured in miles and woven from fluid rocks when the world was made. The reds and oranges of the sunset, splashed upon the walls of the chasms, are broken by lozenges of Navajo black, as big as a house, or edged with a border of white crystal, ten or twenty feet wide and half a mile long. The knots in this mighty tapestry are tied with outcroppings of marble; its foundation is of granite and hard rock, amethyst in the dawn, gray-black or burnt-umber under the brilliant noon-day sky, and toning to purples and violets in the haze of the distant peaks.

To build a railroad along the ragged canyons of Carriso Gorge, an enterprise long considered impossible, finally was accomplished by blasting from solid rock, a broad and secure avenue, on an easy gradient, for the rails of the San Diego and Arizona Railway, "The San Diego Short Line."

Mexico—The San Diego and Arizona, operated in connection with the Southern Pacific, passes across the border four times between San Diego and Yuma, through Mexico—Lower California. This delightful trip through scenic Mexican territory is a novel experience not to be had on any other trans-continental journey.

Trains stop at Tijuana, Tecate and Mexicali, Mexico, and at Calexico and Cantu, California, where passengers have opportunity to view these interesting border towns and acquaint themselves with the customs of the people.

Passports are not required for passing through Mexico, either over the San Diego and Arizona or the Southern Pacific. Arrangements have been made with the United States and Mexican Customs authorities so that passengers are not inconvenienced in any manner whatever when crossing the border.



Curio Store, Tijuana, B. C., Mexico



Hotel del Coronado, Coronado Beach—On San Diego Bay, is one of America's most famous all-year resort hotels. The brilliancy and frequency of indoor entertainment events and social functions, summer and winter, is on a par with elaborate and varied opportunities offered guests in out-of-door amusements and attractions.

Polo reigns supreme from January to April, and supplanting this sport in summer and fall are the Trap Shooting Tournaments, motoring, golf, tennis, bay and surf bathing, boating, fishing and flying, enjoyed all year.

The Hotel Barbara Worth, El Centro, California, is the business hub of Imperial Valley, the world's greatest reclamation project. It probably is the finest hotel property located in a small city in America. The hotel caters to both commercial and tourist trade.

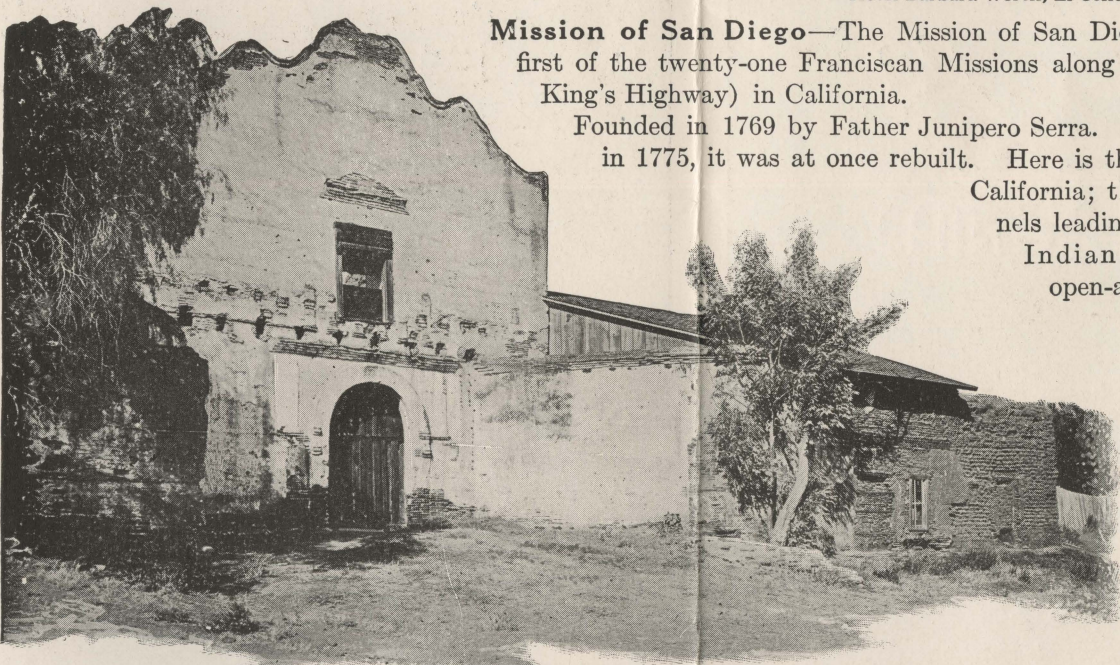
Imperial Valley has the finest winter climate on earth.



Hotel Barbara Worth, El Centro, California

Mission of San Diego—The Mission of San Diego de Alcala was the first of the twenty-one Franciscan Missions along El Camino Real (The King's Highway) in California.

Founded in 1769 by Father Junipero Serra. Destroyed by Indians in 1775, it was at once rebuilt. Here is the first olive grove in California; the underground tunnels leading to the old well; the Indian school building and open-air shrine. It was from here that Serra in 1770 wrote to his King, saying, "This California is a goodly land. The wild vines are loaded with grape and the roses here are like those of Castile."

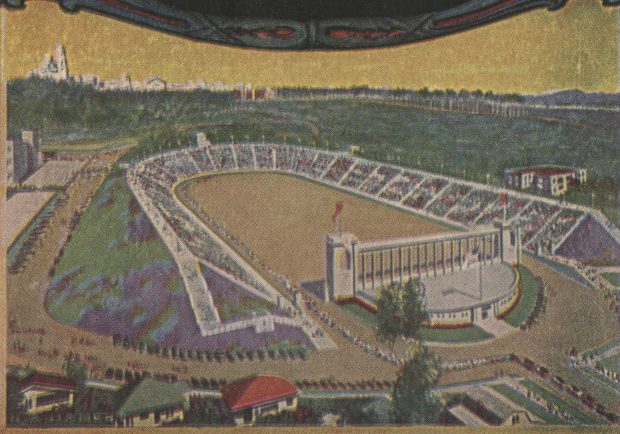


Where California Began. The Mission of San Diego de Alcala, the First Mission Built in California.

THE WAY TO SEE CALIFORNIA IS TO SEE SAN DIEGO FIRST

SAN DIEGO & ARIZONA RAILWAY

SAN DIEGO SHORT LINE



THE STADIUM SAN DIEGO, CALIFORNIA