

INFORMAL REPORT AND INDEX OF
NAVIGATION AND DEPTH DATA
(Issued December 1989)

HYDROS EXPEDITION
LEG 2

=====

R/V Melville

Punta Arenas, Chile (7 December 1988)
to
Capetown, South Africa (15 January 1989)

Chief Scientist - B. Key (Princeton University)

Resident Marine Technician - John Boaz

Post-Cruise Processing and Report Preparation
by Geological Data Center, Scripps Institution of Oceanography

Data Collection and Processing Funded by
NSF Grant Number OCE86-16368
and University of California General Funds

NOTE: This is an index of underway geophysical data edited
and processed after the completion of the cruise leg and is
intended primarily for informal use within the institution.
This document is not to be reproduced or distributed outside
Scripps without prior approval of the chief scientist or the
Geological Data Center, Scripps Institution of Oceanography,
La Jolla, California 92093.

GDC Cruise I.D.# 244

INFORMAL REPORT AND INDEX OF NAVIGATION
AND UNDERWAY GEOPHYSICAL DATA

Processed by the Geological Data Center
Scripps Institution of Oceanography

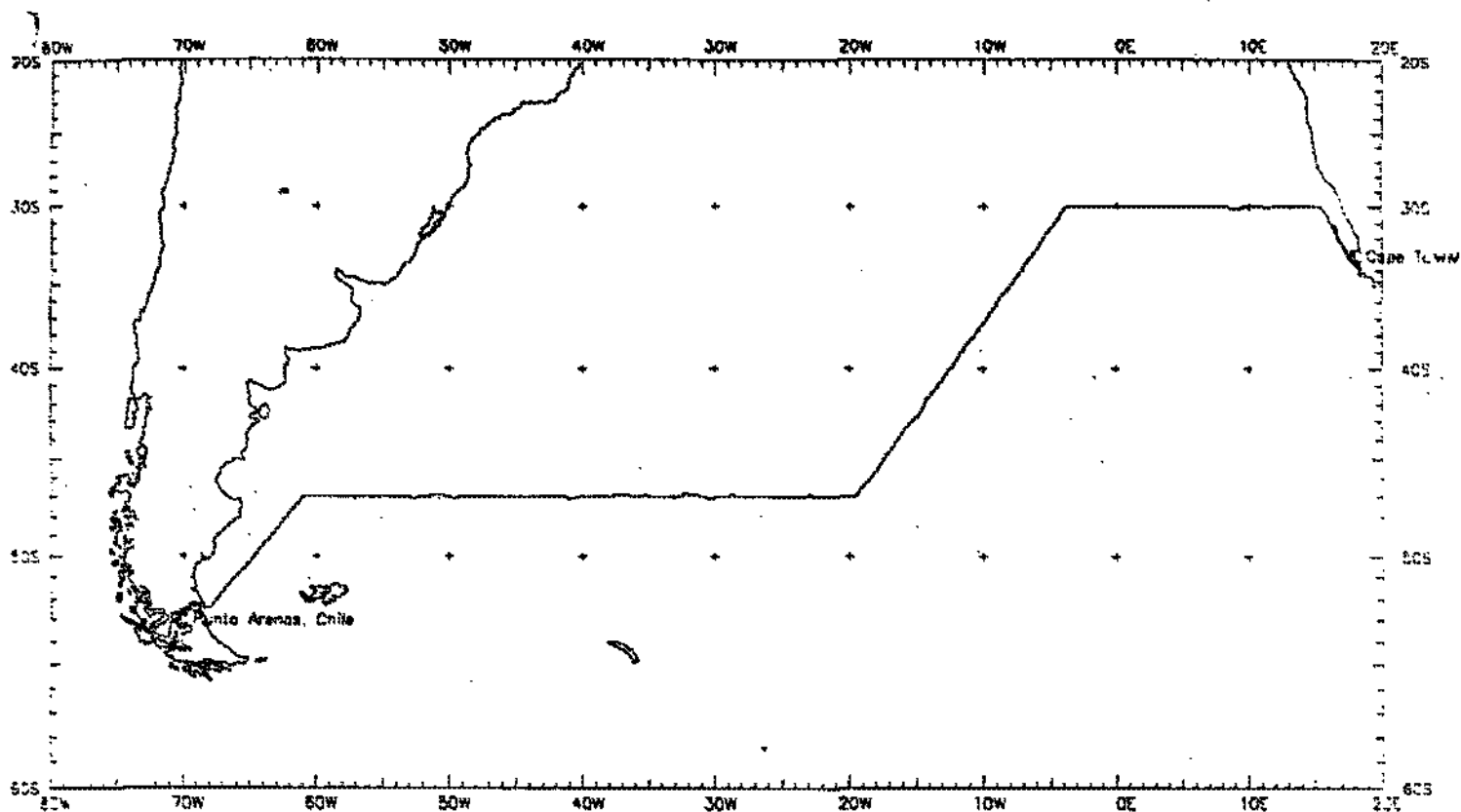
Contents:

-
- Index Chart - gives track of cruise leg, dates, ports, and mileage of each type of data collected.
- Track Charts - annotated with dates and hour ticks.
- Profiles - depth, magnetic anomaly and gravity free air anomaly vs. distance. Sections of track having subbottom profiles (airgun or watergun) records have a wide black line along the bottom of the profile. Sections having Sea Beam are indicated by a narrow black line.
- Sample Index - list of beginning and end times and positions of all underway records as well as all other samples and measurements (geology, biology, physical oceanography, etc.) collected on the cruise leg.

NOTE: One or more of the underway data types may not be collected on a given cruise leg.

For information on the availability and reproduction costs of data in the following forms, contact S. M. Smith, Curator, Geological Data Center, Scripps Institution of Oceanography, La Jolla, CA 92093. Phone (619)534-2752.

1. Navigation listing with times and positions of course and speed changes, fixes and drift velocity.
2. Depth compilation plots - compilation plots at the traditional scale of 4in/degree longitude (1:1,000,000) are no longer produced for Sea Beam cruises. Custom plots may be requested of vertical beam (2 $\frac{2}{3}$ degree beam width) depths retrieved at one minute intervals of ship time.
3. Plots of depths, magnetics or gravity profiles along track - custom plots at various map and profile scales on Mercator projection may be requested.
4. Separate time series files of navigation, depth, gravity and magnetics as well as these data merged in the MGD77 Exchange format on magnetic tape.
5. Microfilm or Xerox copies of:
 - a. Echosounder records - 12 and 3.5 kHz frequency
 - b. Subbottom profiler records
 - c. Magnetometer records
 - d. Underway data log book



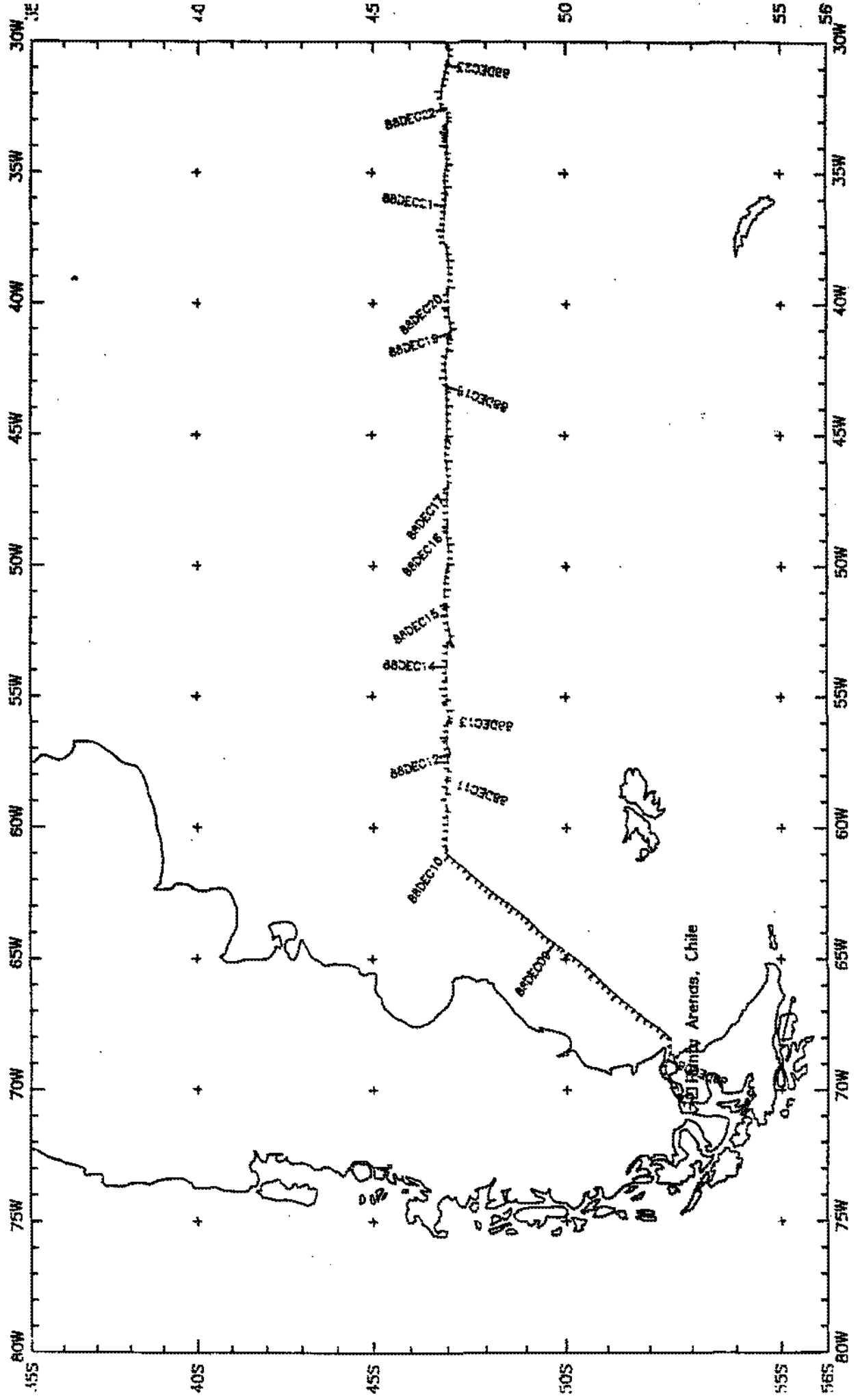
HYDROS LEG 2
(HYDR02MV)

HYDROS EXPEDITION LEG 2

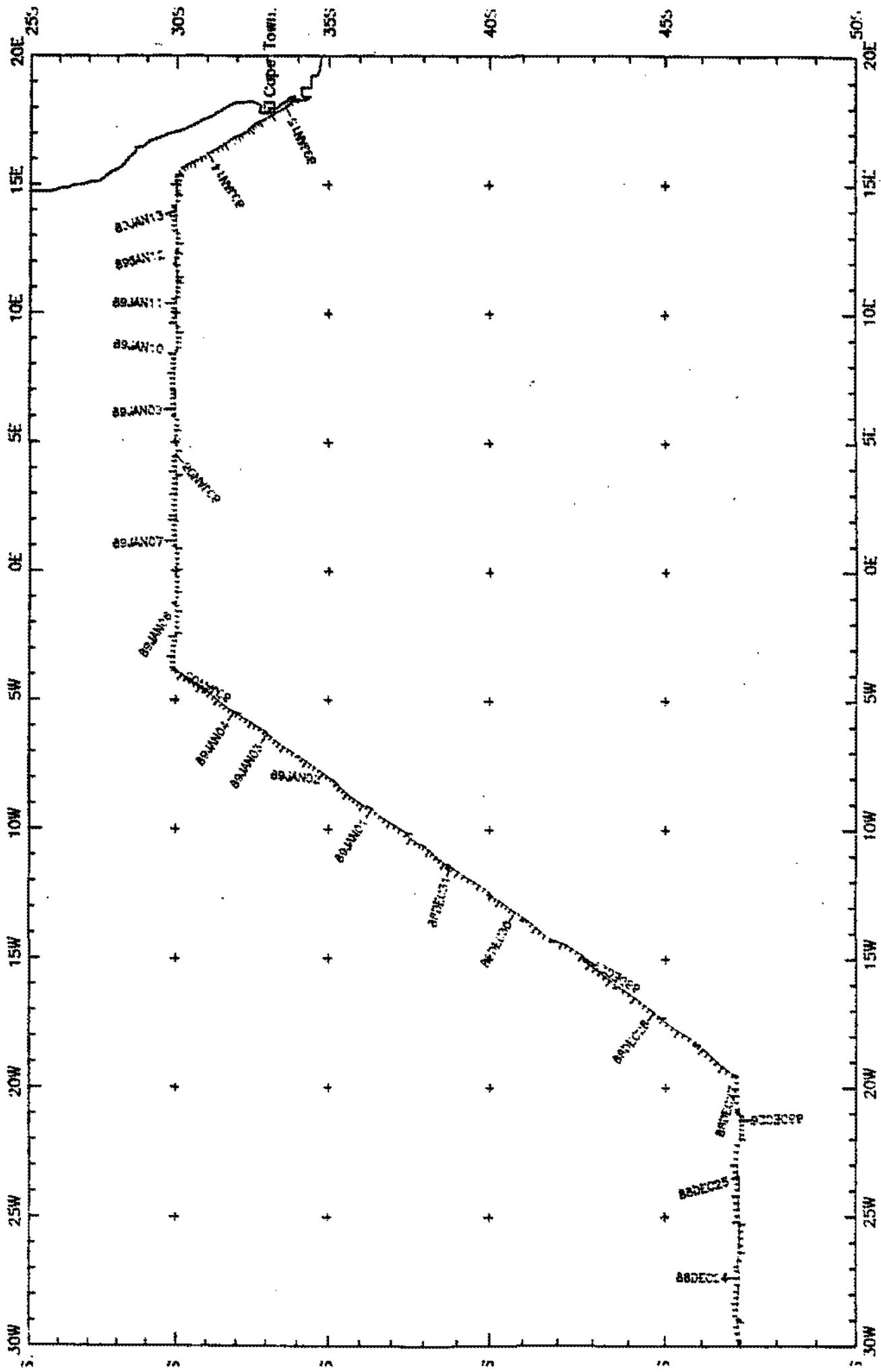
CHIEF SCIENTIST: B. Key (Princeton University)
 PORTS: Punta Arenas, Chile - Capetown, South Africa
 DATES: 7 December 1988 - 15 January 1989
 SHIP: R/V Melville

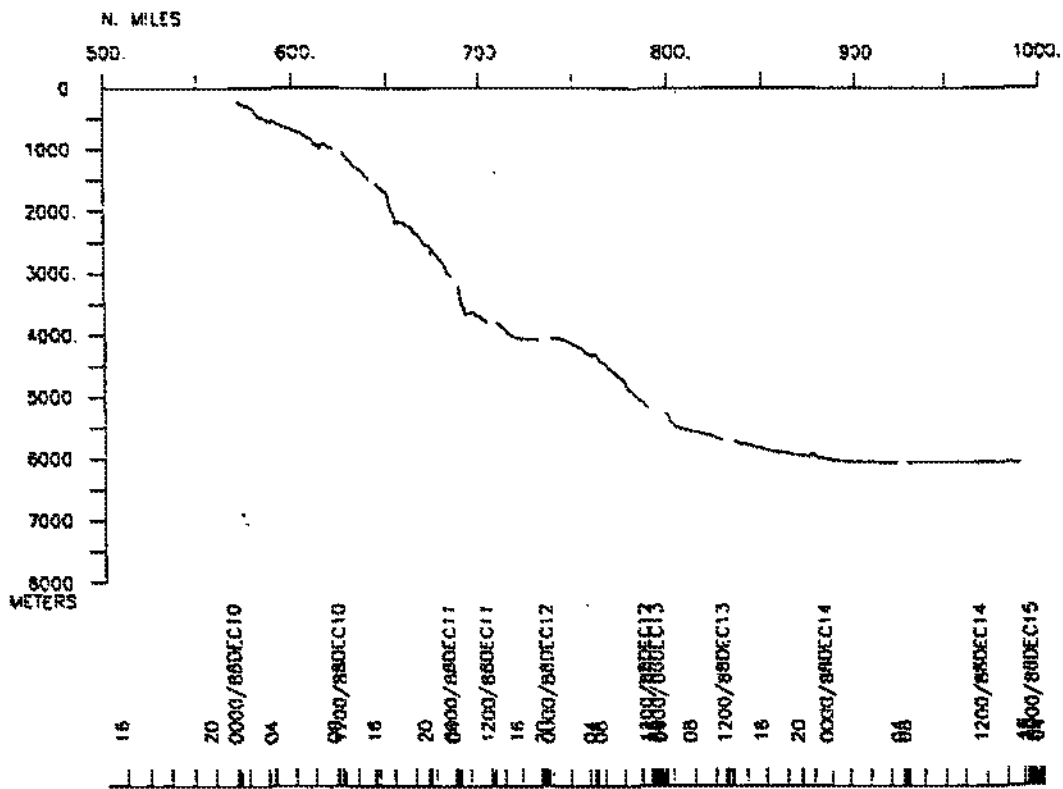
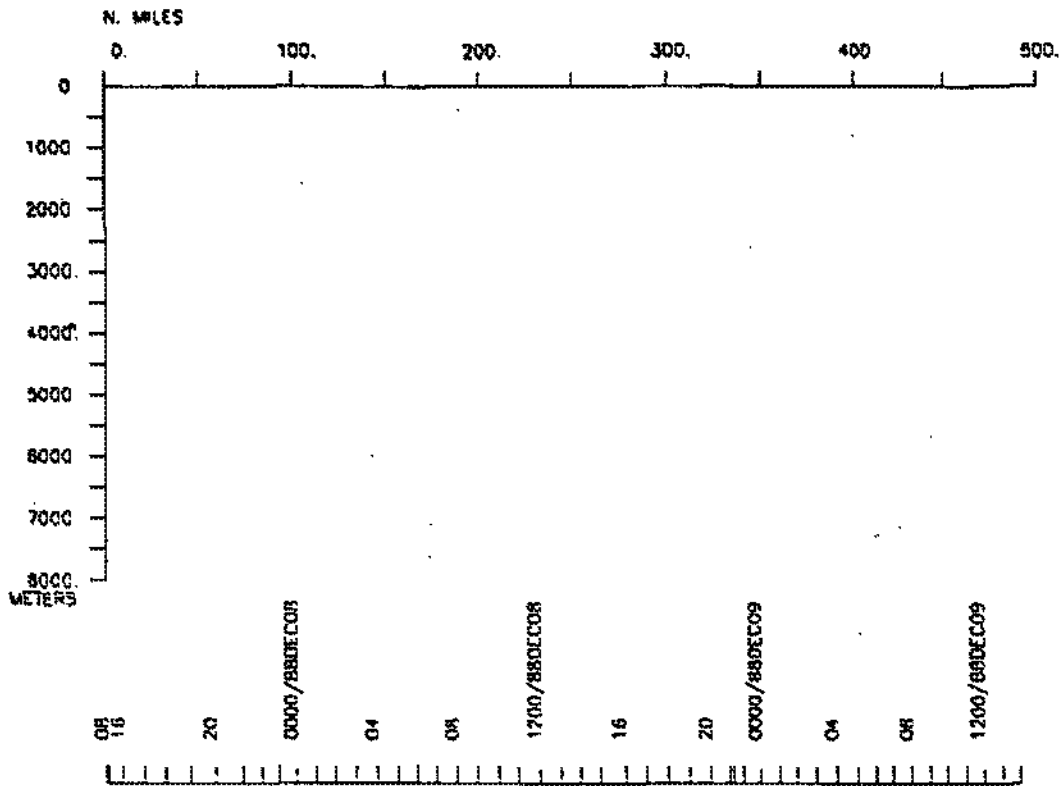
TOTAL MILEAGE OF UNDERWAY DATA COLLECTED

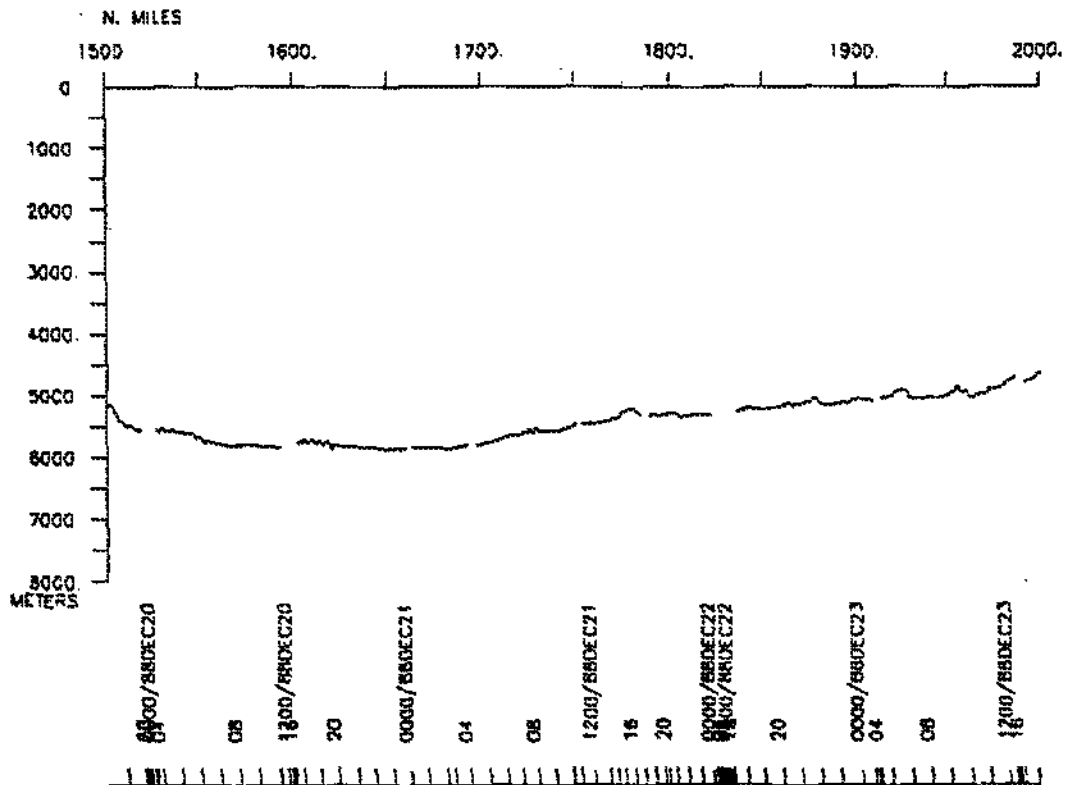
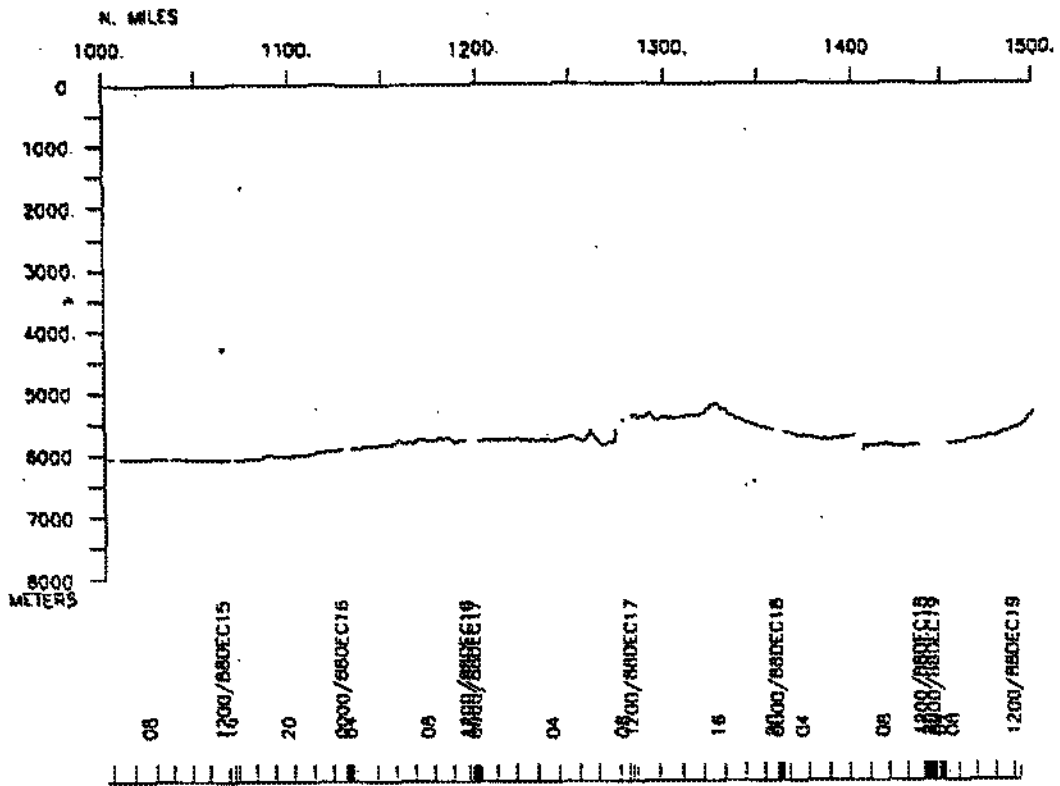
- 1) Cruise - 5070 miles
- 2) Bathymetry - 3990 miles
- 3) Magnetics - none collected
- 4) Seismic Reflection - none collected
- 5) Gravity - none collected

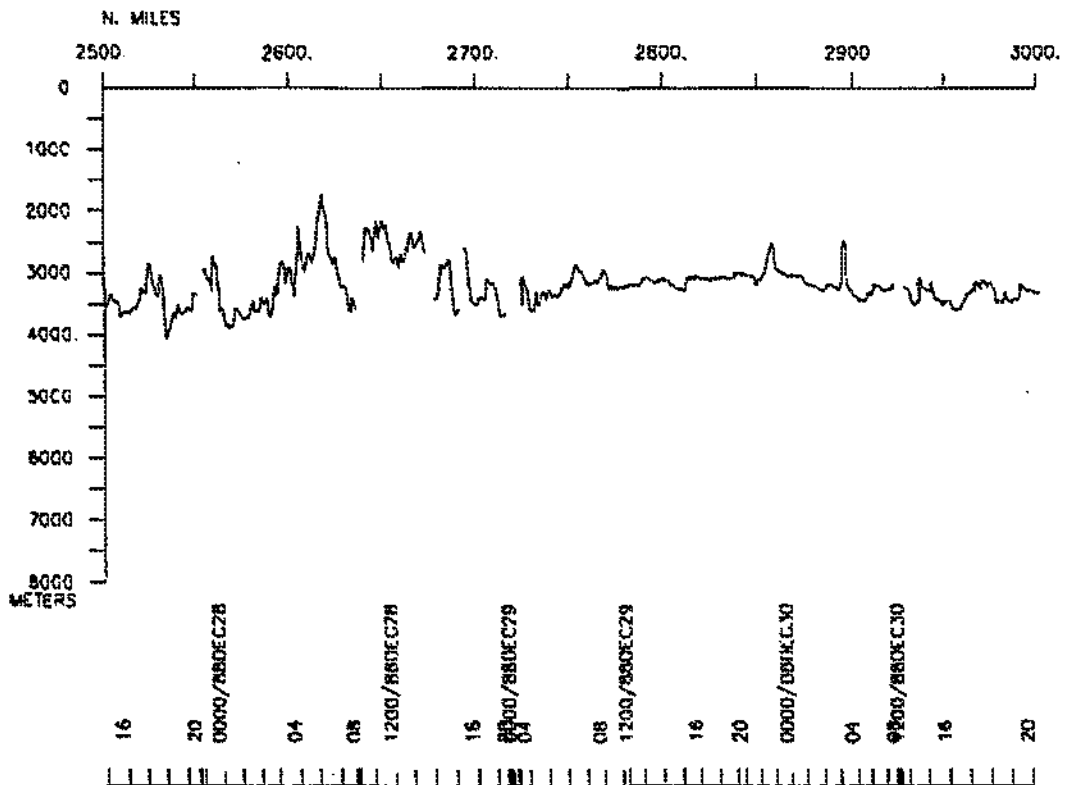
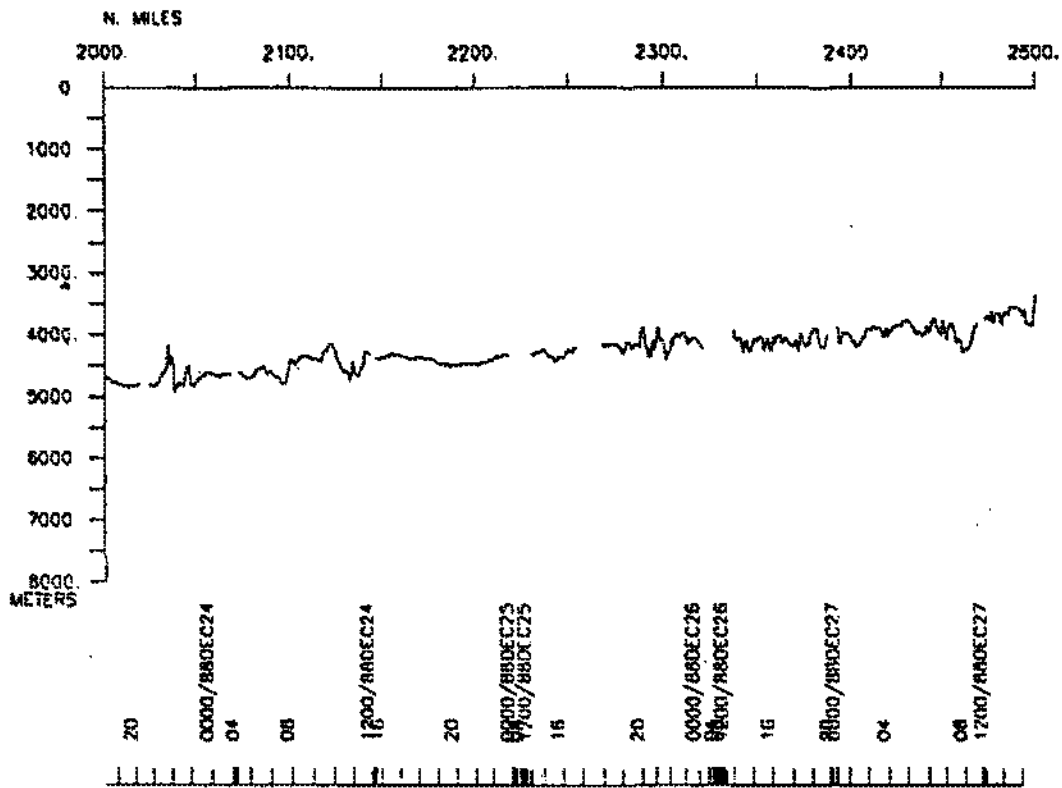


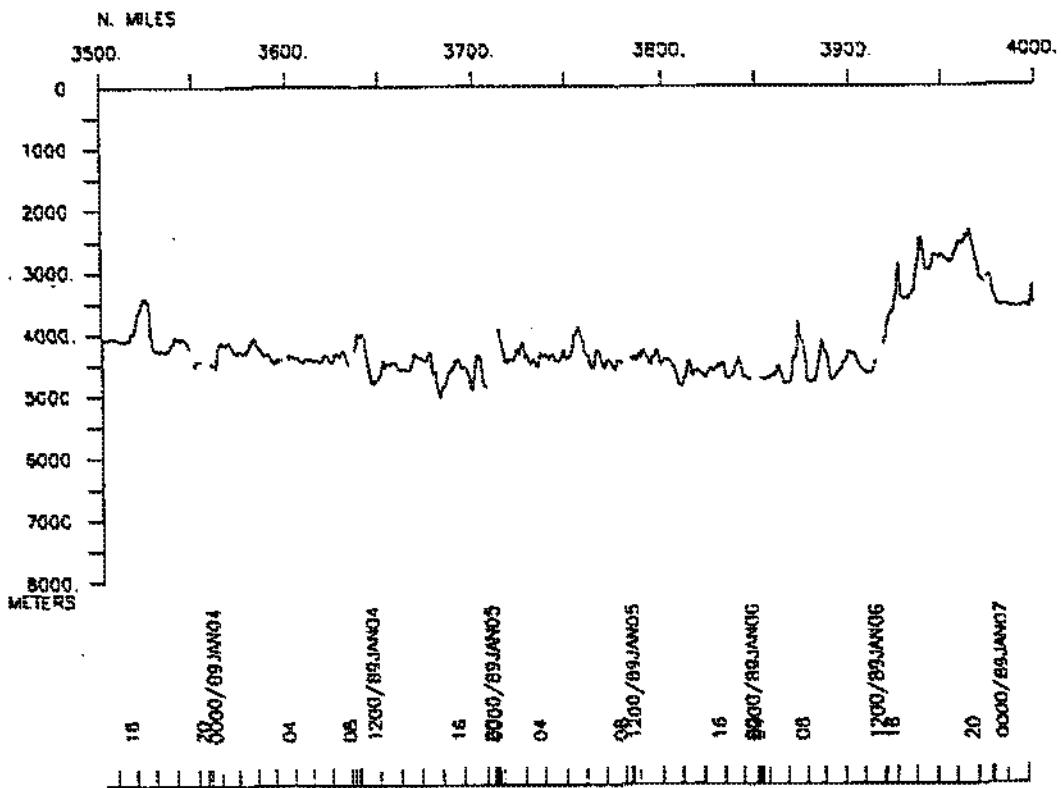
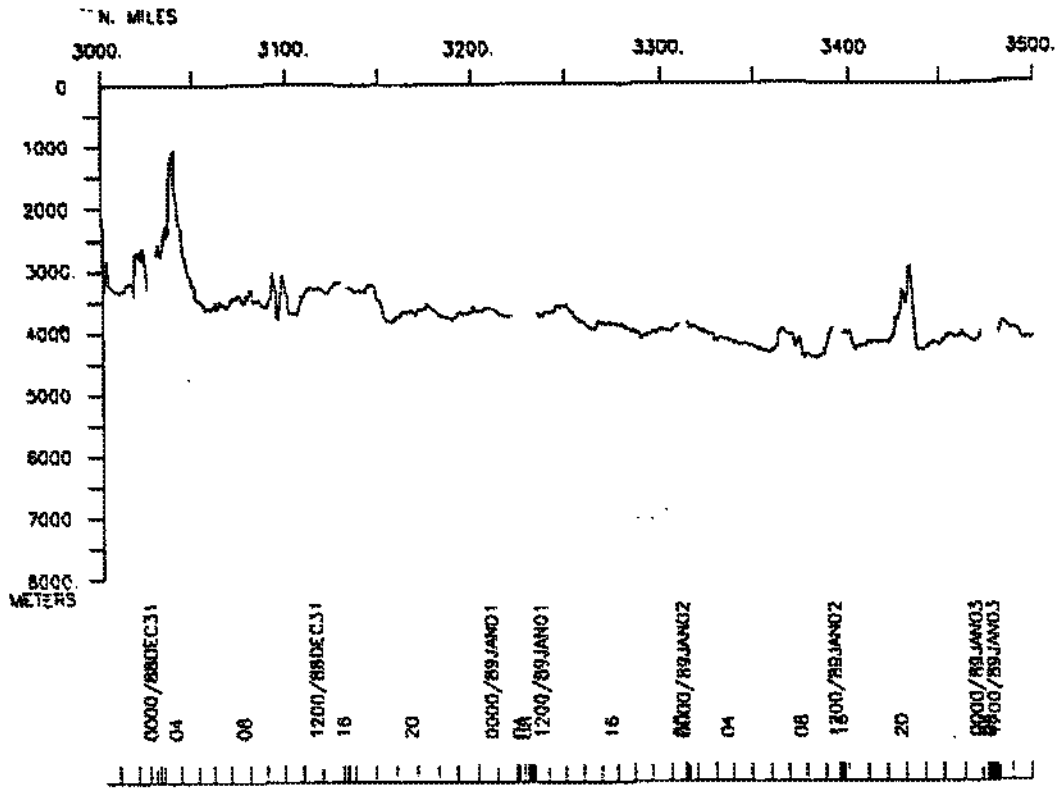
HYDRS LEG 2 (HYDRO2MV)
Track 1 2

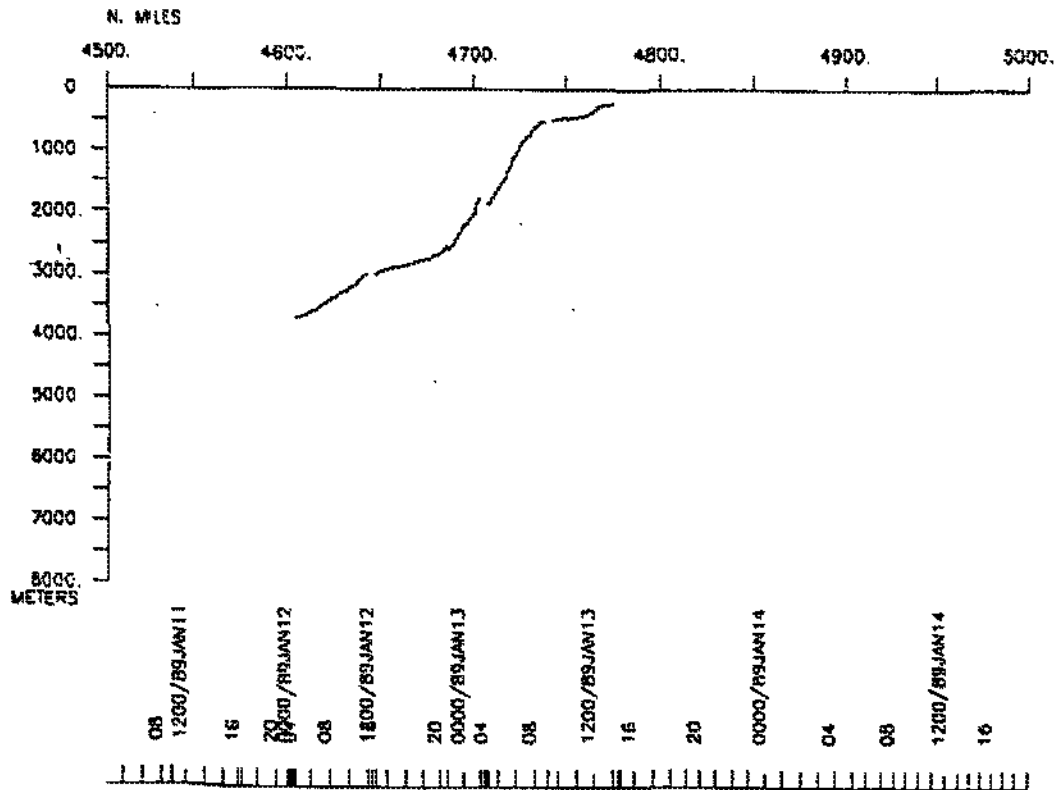
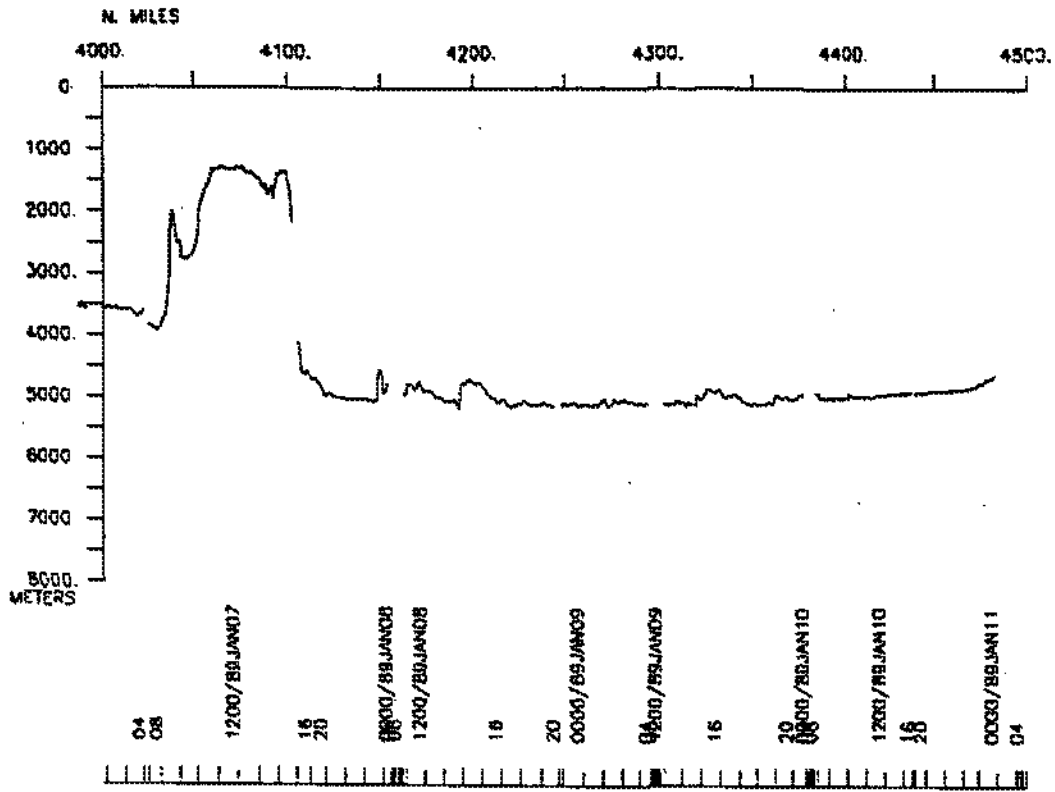


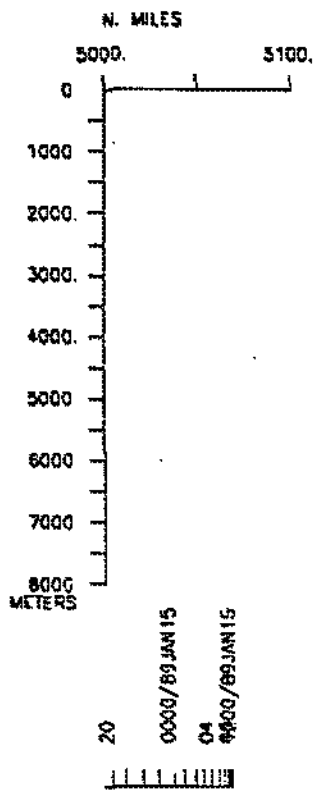












S.I.O. SAMPLE INDEX

(Issued December 1989)

HYDROS EXPEDITION

Leg 2

R/V Melville

Punta Arenas, Chile (7 December 1988)
to
Capetown, South Africa (15 January 1989)

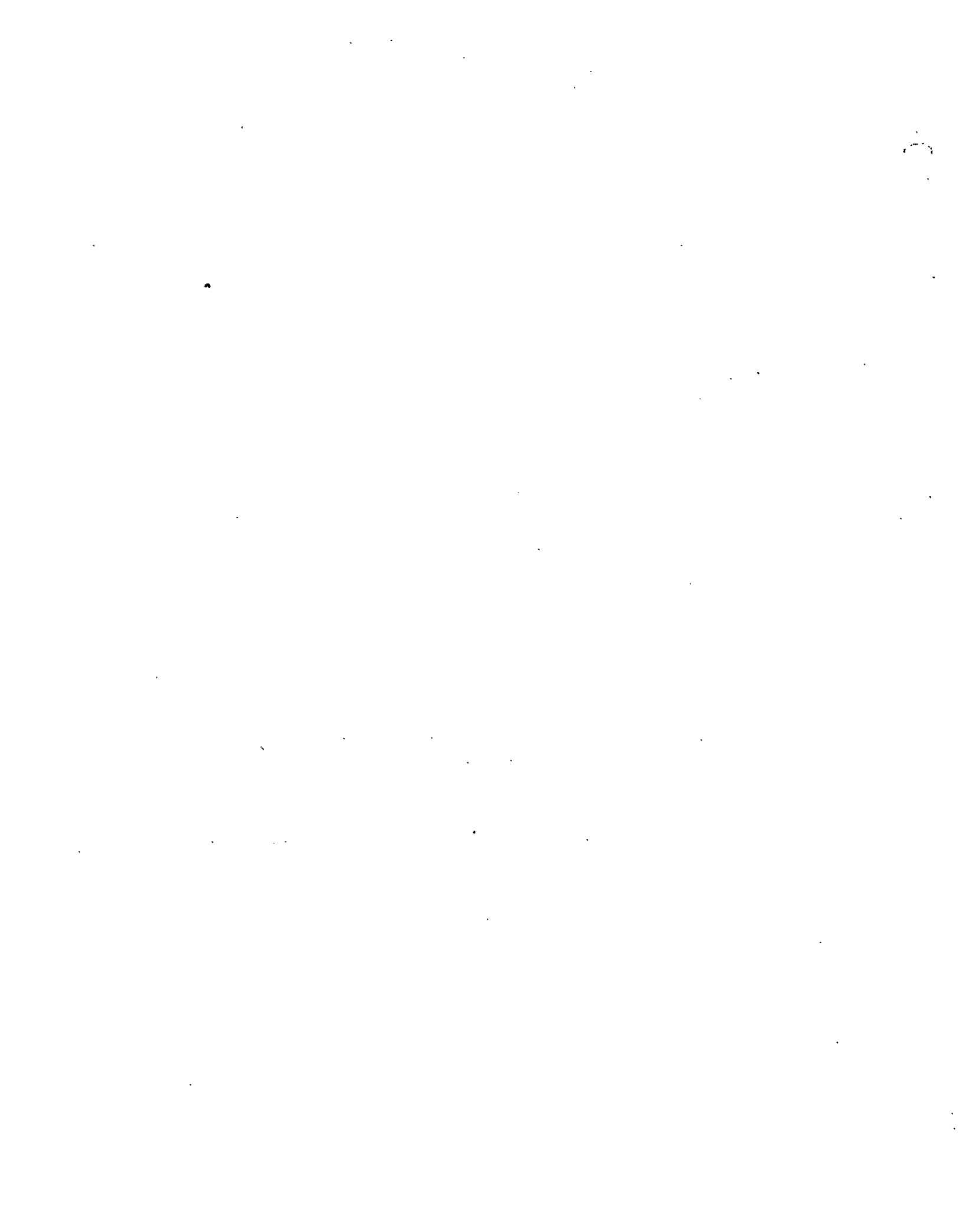
Chief Scientist - B. Key

Princeton University

The Sample Index is a first level interdisciplinary listing of time, position, sample identification and disposition of all samples, records and measurements collected on this cruise leg. The index data are encoded at sea by the resident marine technician and processed on shore by the S.I.O. Geological Data Center shortly after the completion of the cruise leg.

Positions are interpolated on the basis of sample time by comparison to a single, edited navigation file. Samples beginning at one time and position and ending at another are entered on two consecutive lines. Disposition and sample type are represented by three and four character codes to permit further computer searches on these parameters. (Listings defining these codes are available from the Geological Data Center.)

GDC Cruise I.D.# 244



**** PORTS ****

1512	071288	-	LGPT B PUNTA ARENAS, CHILE	53-100S	70-536W	sHYDRO2MV
0600	150189		LGPT E CAPETOWN, SO. AFRICA	33-520S	18-255E	sHYDRO2MV

**** PERSONNEL ****

#	NAME	TITLE	AFFILIATION	CRID
PECS PTU	KEY, B.	CHIEF SCIENTIST	PRINCETON UNIVERSITY	HYDRO2MV
PESP PCF	BEAUPRE, M.	RESEARCH ASS.	SCRIPPS INSTITUTION	HYDRO2MV
PESP SIX	BENJAMIN, M.	RESEARCH ASS.	LAMONT-DOHERTY	HYDRO2MV
PEST SIX	BERGLUND, B.	STUDENT	TEXAS A&M UNIVERSITY	HYDRO2MV
PESP SIX	BIRDWHISTELL, S.	RESEARCH ASS.	WOODS HOLE	HYDRO2MV
PERT PCF	BOAZ, J.	RESIDENT TECH	SCRIPPS INSTITUTION	HYDRO2MV
PESP PCF	BOS, D.	RESEARCH ASS.	SCRIPPS INSTITUTION	HYDRO2MV
PESP SIX	CHIPMAN, D.	RESEARCH ASS.	LAMONT-DOHERTY	HYDRO2MV
PEST SIX	FIELD, A.	STUDENT	LAMONT-DOHERTY	HYDRO2MV
PEMT PCF	FIELD, T.	MARINE TECH	SCRIPPS INSTITUTION	HYDRO2MV
PEMT PCF	LOPEZ, L.	MARINE TECH	SCRIPPS INSTITUTION	HYDRO2MV
PESP SIX	MATHIEU, G.	RESEARCH ASS.	LAMONT-DOHERTY	HYDRO2MV
PEET PCF	MATTSON, C.	ELEC. ENGINEER	SCRIPPS INSTITUTION	HYDRO2MV
PESP PTU	MCDONALD, G.	RESEARCH ASS.	PRINCETON UNIVERSITY	HYDRO2MV
SP SIX	NOONPAN, M.	RESEARCH ASS.	LAMONT-DOHERTY	HYDRO2MV
PESP PCF	CONWAY, C.	RESEARCH ASS.	SCRIPPS INSTITUTION	HYDRO2MV
PECS SIX	PIOLA, A.	GUEST CHIEF SCI.	ARGENTINA	HYDRO2MV
PESP PCF	SANBORN, K.	RESEARCH ASS.	SCRIPPS INSTITUTION	HYDRO2MV
PEST SIX	STRAUB, D.	STUDENT	UNIV. OF WASHINGTON	HYDRO2MV
PESP PCF	WARNER, M.	RESEARCH ASS.	SCRIPPS INSTITUTION	HYDRO2MV

****NOTES****

#AN 'X' IN THE (B)EGIN/(E)ND COLUMN FOLLOWING THE SAMPLE CODE INDICATES NO
 #SAMPLE OR DATA RECOVERED. A 'C' INDICATES CONTINUATION OF DATA COLLECTION
 #FROM BEFORE THE BEGINNING OR AFTER THE END OF A PARTICULAR LEG. (MOORED
 #BOTTOM INSTRUMENTS, FOR EXAMPLE.) THE NUMBER APPEARING IN THE COLUMNS
 #BETWEEN THE SAMPLE IDENTIFIER AND THE DISPOSITION CODE, FOR MANY SAMPLE
 #ENTRIES, IS THE WATER DEPTH IN CORRECTED METERS. POSITIONS ARE IN TENTHS
 #OF MINUTES.

#GMT #TIME	DDMMYY DATE	LOC T TIME Z	SAMP CODE	SAMPLE IDENTIFIER	DISP CODE	LAT.	LONG.	CRUISE LEG-SHIP
---------------	----------------	-----------------	--------------	----------------------	--------------	------	-------	--------------------

***UNDERWAY DATA CURATOR - S. M. SMITH EXT. 42752

*** LOG BOOKS ***

0030	101288		LBUW B	UNDERWAY WATCH LOG	GDC 46-584S	60-485W	sHYDRO2MV
1305	130189		LBUW E	UNDERWAY WATCH LOG	GDC 29-585S	15-195E	sHYDRO2MV

*** ECHO SOUNDER RECORDS ***

2000	091288		DPRT B	12 KHZ ROLL 1	GDC 47-027S	61-035W	sHYDRO2MV
2350	201288		DPRT E	12 KHZ ROLL 1	GDC 46-578S	36-184W	sHYDRO2MV
0000	211288		DPRT B	12 KHZ ROLL 2	GDC 46-580S	36-161W	sHYDRO2MV
2120	030189		DPRT E	12 KHZ ROLL 2	GDC 31-598S	5-311W	sHYDRO2MV
2132	030189		DPRT B	12 KHZ ROLL 3	GDC 31-598S	5-313W	sHYDRO2M
1500	130189		DPRT E	12 KHZ ROLL 3	GDC 30-000S	15-220E	sHYDRO2M.

*** CONDUCTIVITY, TEMPERATURE AND DEPTH SAMPLES ***

2133	091288		TDOT	171-01	201M R24	PCF 46-595S	60-492W	sHYDRO2MV
0306	101288		TDOT	172-01	520M R12	PCF 46-592S	60-232W	sHYDRO2MV
0748	101288		TDOT	173-01	982M R12	PCF 47-004S	59-346W	sHYDRO2MV
1105	101288		TDOT	173-02	982M G07	PCF 46-594S	59-332W	sHYDRO2MV
1452	101288		TDOT	174-01	1526M R18	PCF 46-583S	59-088W	sHYDRO2MV
2015	101288		TDOT	175-01	2542M R18	PCF 46-593S	58-298W	sHYDRO2MV
0408	111288		TDOT	176-02	3036M R18	PCF 46-583S	58-121W	sHYDRO2MV
1224	111288		TDOT	177-01	3812M R36	PCF 47-010S	57-474W	sHYDRO2MV
1930	111288		TDOT X	178-02		PCF 47-024S	57-136W	sHYDRO2MV
1950	111288		TDOT X	178-03		PCF 47-026S	57-133W	sHYDRO2MV
2136	111288		TDOT	178-04	4027M R24	PCF 47-034S	57-125W	sHYDRO2MV
0529	121288		TDOT	179-01	4355M R36	PCF 46-590S	56-400W	sHYDRO2MV
1849	121288		TDOT	180-02	5240M R36	PCF 47-010S	55-563W	sHYDRO2MV
1139	131288		TDOT	181-01	5733M R36	PCF 46-598S	55-086W	sHYDRO2MV
1949	131288		TDOT	182-01	5987M R36	PCF 46-594S	54-139W	sHYDRO2MV
0543	141288		TDOT	183-01	6099M R36	PCF 47-034S	52-537W	sHYDRO2MV
2221	141288		TDOT	184-02	6095M R36	PCF 46-593S	51-295W	sHYDRO2MV
1402	151288		TDOT	185-01	6099M R36	PCF 47-016S	49-545W	sHYDRO2MV
0045	161288		TDOT	186-01	5932M R36	PCF 46-596S	48-310W	sHYDRO2MV
1805	161288		TDOT	187-02	5795M R36	PCF 47-001S	47-003W	sHYDRO2M
0933	171288		TDOT	188-01	5503M R36	PCF 47-009S	45-063W	sHYDRO2M
2024	171288		TDOT	189-01	5641M R36	PCF 47-002S	43-113W	sHYDRO2MV
0042	181288		TDOT	189-02	5641M G07	PCF 47-015S	43-084W	sHYDRO2MV

#GMT #TIME #	DDMMYY DATE	LOC T TIME-Z	SAMP CODE	SAMPLE IDENTIFIER		DISP CODE	LAT.	LONG.	CRUISE LEG-SHIP
1857	181288		TDOT	190-02	5881M	R36	PCF 47-035S	41-135W	sHYDRO2MV
2232	191288		TDOT	191-02	5582M	R36	PCF 47-013S	39-265W	sHYDRO2MV
1228	201288		TDOT	192-01	5845M	R36	PCF 46-582S	37-442W	sHYDRO2MV
0920	221288		TDOT	193-02	5304M	R36	PCF 46-537S	32-309W	sHYDRO2MV
0251	231288		TDOT	194-01	5056M	R36	PCF 47-025S	30-417W	sHYDRO2MV
1925	231288		TDOT	195-01	4671M	R36	PCF 46-573S	28-301W	sHYDRO2MV
0310	241288		TDOT	196-01	4622M	R36	PCF 46-595S	27-036W	sHYDRO2MV
1329	241288		TDOT	197-01	4346M	R36	PCF 47-006S	25-169W	sHYDRO2MV
0600	251288		TDOT	198-02	4316M	R36	PCF 46-592S	23-283W	sHYDRO2MV
2109	261288		TDOT	199-01	3946M	R36	PCF 46-577S	19-331W	sHYDRO2MV
1021	271288		TDOT	200-01	3777M	R36	PCF 45-567S	18-205W	sHYDRO2MV
2059	271288		TDOT	201-01	3245M	R36	PCF 44-512S	17-167W	sHYDRO2MV
0814	281288		TDOT	202-01	3898M	R36	PCF 43-446S	16-053W	sHYDRO2MV
2302	281288		TDOT	203-02	3033M	R36	PCF 42-452S	14-580W	sHYDRO2MV
1035	291288		TDOT	204-01	3189M	R36	PCF 41-549S	14-182W	sHYDRO2MV
1935	291288		TDOT	205-01	3005M	R36	PCF 41-073S	13-299W	sHYDRO2MV
0813	301288		TDOT	206-01	3230M	R36	PCF 40-032S	12-292W	sHYDRO2MV
73	311288		TDOT	207-01	2953M	R24	PCF 38-493S	11-254W	sHYDRO2MV
1-47	311288		TDOT	208-01	3277M	R25	PCF 37-300S	10-088W	sHYDRO2MV
0647	010189		TDOT	209-02	3702M	R36	PCF 36-147S	9-083W	sHYDRO2MV
2132	010189		TDOT	210-01	3862M	R36	PCF 35-104S	8-089W	sHYDRO2MV
1449	020189		TDOT	211-02	4045M	R36	PCF 34-030S	7-100W	sHYDRO2MV
0720	030189		TDOT	212-02	4185M	R36	PCF 33-033S	6-206W	sHYDRO2MV
2116	030189		TDOT	213-01	4467M	R36	PCF 31-598S	5-310W	sHYDRO2MV
0840	040189		TDOT	214-01	4185M	R36	PCF 31-003S	4-382W	sHYDRO2MV
2350	040189		TDOT	215-02	4101M	R36	PCF 29-583S	3-476W	sHYDRO2MV
0939	050189		TDOT	216-01	4437M	R36	PCF 30-011S	2-300W	sHYDRO2MV
0022	060189		TDOT	217-02	4736M	R36	PCF 30-001S	1-147W	sHYDRO2MV
1329	060189		TDOT	218-01	4239M	R36	PCF 30-004S	0-036W	sHYDRO2MV
2145	060189		TDOT	219-01	3101M	R24	PCF 29-599S	1-005E	sHYDRO2MV
0538	070189		TDOT	220-01	3866M	R36	PCF 29-593S	2-006E	sHYDRO2MV
1714	070189		TDOT	221-01	4746M	G09	PCF 30-008S	3-420E	sHYDRO2MV
0600	080189		TDOT	222-02	4930M	R36	PCF 29-587S	4-265E	sHYDRO2MV
2045	080189		TDOT	223-01	5176M	R36	PCF 30-004S	6-011E	sHYDRO2MV
0519	090189		TDOT	224-01	5119M	R36	PCF 29-583S	6-569E	sHYDRO2MV
0338	100189		TDOT	225-02	4959M	R36	PCF 30-017S	8-280E	sHYDRO2MV
1709	100189		TDOT	226-02	4920M	R36	PCF 30-013S	9-298E	sHYDRO2MV
0240	110189		TDOT	227-01	4569M	R36	PCF 29-597S	10-333E	sHYDRO2MV
0946	110189		TDOT	228-01	4194M	R36	PCF 30-015S	11-157E	sHYDRO2MV
1611	110189		TDOT	229-01	3945M	R36	PCF 29-585S	11-586E	sHYDRO2MV
0150	120189		TDOT	230-02	3713M	R36	PCF 30-007S	12-225E	sHYDRO2MV
1448	120189		TDOT	231-01	3012M	R24	PCF 30-022S	13-048E	sHYDRO2MV
739	120189		TDOT	232-01	2563M	R24	PCF 29-595S	13-487E	sHYDRO2MV
59	130189		TDOT	233-01	1760M	R24	PCF 29-585S	14-062E	sHYDRO2MV
0903	130189		TDOT	234-01	507M	R19	PCF 29-599S	14-388E	sHYDRO2MV
1336	130189		TDOT	235-01	224M	R08	PCF 29-598S	15-208E	sHYDRO2MV
1442	130189		TDOT	235-02	224M	G04	PCF 30-000S	15-217E	sHYDRO2MV

#GMT	DDMMYY	LOC T	SAMP	SAMPLE	DISP	LAT.	LONG.	CRUISE
#TIME	DATE	TIME_Z	CODE	IDENTIFIER	CODE			LEG-SHIP
*** GERARD BARRELS ***								
2342	091288		GCLV	171-02	201M G04	PCF 46-588S	60-491W	sHYDRO2MV
0115	111288		GCLV	176-01	3036M G06	PCF 46-583S	58-118W	sHYDRO2MV
0746	111288		GCLV	176-03	3036M G09	PCF 46-585S	58-117W	sHYDRO2MV
1818	111288		GCLV	178-01	4027M G06	PCF 47-014S	57-143W	sHYDRO2MV
1342	121288		GCLV	180-01	5208M G09	PCF 47-003S	55-579W	sHYDRO2MV
2350	121288		GCLV	180-03	5240M G09	PCF 47-021S	55-555W	sHYDRO2MV
0427	131288		GCLV	180-04	5249M G07	PCF 47-027S	55-547W	sHYDRO2MV
1642	141288		GCLV	184-01	6095M G09	PCF 46-592S	51-267W	sHYDRO2MV
0337	151288		GCLV	184-03	6095M G09	PCF 46-572S	51-294W	sHYDRO2MV
1323	161288		GCLV	187-01	5788M G09	PCF 46-597S	47-004W	sHYDRO2MV
2230	161288		GCLV	187-03	5795M G09	PCF 47-009S	47-005W	sHYDRO2MV
1243	181288		GCLV	190-01	5879M G09	PCF 47-020S	41-156W	sHYDRO2MV
2334	181288		GCLV	190-03	5881M G09	PCF 47-034S	41-096W	sHYDRO2MV
0451	191288		GCLV X	190-04		PCF 47-043S	41-063W	sHYDRO2MV
1722	191288		GCLV	191-01	5582M G07	PCF 47-012S	39-242W	sHYDRO2M'
0243	201288		GCLV	191-03	5582M G07	PCF 47-023S	39-274W	sHYDRO2M
1617	201288		GCLV	192-02	5845M G07	PCF 46-558S	37-444W	sHYDRO2MV
0435	221288		GCLV	193-01	5304M G09	PCF 46-559S	32-307W	sHYDRO2MV
1435	221288		GCLV	193-03	5304M G09	PCF 46-522S	32-311W	sHYDRO2MV
0128	251288		GCLV	198-01	4315M G09	PCF 46-598S	23-285W	sHYDRO2MV
0900	251288		GCLV X	198-03		PCF 46-596S	23-268W	sHYDRO2MV
1202	251288		GCLV	198-04	4316M G09	PCF 46-584S	23-258W	sHYDRO2MV
0020	271288		GCLV	199-02	3873M G09	PCF 46-558S	19-314W	sHYDRO2MV
1934	281288		GCLV	203-01	3707M G09	PCF 42-439S	14-591W	sHYDRO2MV
0202	291288		GCLV	203-03	3033M G09	PCF 42-460S	14-558W	sHYDRO2MV
1147	301288		GCLV	206-02	3214M G09	PCF 40-042S	12-269W	sHYDRO2MV
0303	010189		GCLV	209-01	3717M G09	PCF 36-158S	9-070W	sHYDRO2MV
0956	010189		GCLV	209-03	3733M G09	PCF 36-135S	9-087W	sHYDRO2MV
0043	020189		GCLV	210-02	3820M G09	PCF 35-100S	8-072W	sHYDRO2MV
1114	020189		GCLV	211-01	3993M G07	PCF 34-045S	7-113W	sHYDRO2MV
0321	030189		GCLV	212-01	4192M G09	PCF 33-015S	6-216W	sHYDRO2MV
1053	030189		GCLV	212-03	4116M G09	PCF 33-038S	6-199W	sHYDRO2MV
1941	040189		GCLV	215-01	4860M G09	PCF 29-594S	3-482W	sHYDRO2MV
1956	050189		GCLV	217-01	4765M G09	PCF 30-000S	1-145W	sHYDRO2MV
0414	060189		GCLV	217-03	4758M G09	PCF 29-597S	1-159W	sHYDRO2MV
0149	080189		GCLV	222-01	4815M G09	PCF 29-597S	4-287E	sHYDRO2MV
0919	080189		GCLV	222-03	4921M G09	PCF 29-596S	4-263E	sHYDRO2MV
1005	090189		GCLV	224-02	5112M G09	PCF 29-579S	6-590E	sHYDRO2MV
2312	090189		GCLV	225-01	4950M G09	PCF 30-003S	8-296E	sHYDRO2MV
0705	100189		GCLV	225-03	4915M G09	PCF 30-026S	8-290E	sHYDRO2MV
1424	100189		GCLV	226-01	4868M G09	PCF 30-013S	9-303E	sHYDRO2M
2230	110189		GCLV	230-01	3695M G09	PCF 30-007S	12-235E	sHYDRO2MV
0450	120189		GCLV	230-03	3724M G09	PCF 29-596S	12-209E	sHYDRO2MV
1153	120189		GCLV	231-01	3000M G07	PCF 30-019S	13-054E	sHYDRO2MV
0416	130189		GCLV	233-02	1848M G09	PCF 29-589S	14-044E	sHYDRO2MV

#GMT #TIME	DDMMYY DATE	LOC TIME.Z	T	SAMP CODE	SAMPLE IDENTIFIER	DISP CODE	LAT.	LONG.	CRUISE LEG-SHIP
*** EXPENDABLE BATHYTHERMOGRAPHS ***									
1141	031288			BTXP	xbt 0002 Probe T-4	GDC	53-101S	070-550W	HYDRO2MV
1545	081288			BTXP	xbt 0015 Probe T-4	GDC	50-436S	065-475W	HYDRO2MV
0120	101288			BTXP	xbt 0016 Probe T-4	GDC	46-584S	060-356W	HYDRO2MV
0532	101288			BTXP	xbt 0017 Probe T-4	GDC	46-592S	059-596W	HYDRO2MV
1317	101288			BTXP	xbt 0018 Probe T-7	GDC	46-588S	059-175W	HYDRO2MV
1711	101288			BTXP	xbt 0019 Probe T-7	GDC	46-578S	058-526W	HYDRO2MV
2238	101288			BTXP	xbt 0020 Probe T-7	GDC	46-584S	058-181W	HYDRO2MV
1002	111288			BTXP	xbt 0021 Probe T-7	GDC	46-588S	058-081W	HYDRO2MV
1019	111288			BTXP	xbt 0022 Probe T-7	GDC	46-588S	058-078W	HYDRO2MV
1521	111288			BTXP	xbt 0023 Probe T-7	GDC	47-008S	057-363W	HYDRO2MV
0103	121288			BTXP	xbt 0024 Probe T-7	GDC	47-017S	056-582W	HYDRO2MV
0854	121288			BTXP	xbt 0025 Probe T-7	GDC	46-592S	056-223W	HYDRO2MV
0817	131288			BTXP	xbt 0026 Probe T-7	GDC	47-009S	055-285W	HYDRO2MV
1545	131288			BTXP	xbt 0027 Probe T-7	GDC	46-596S	054-453W	HYDRO2MV
0011	141288			BTXP	xbt 0028 Probe T-4	GDC	46-589S	053-511W	HYDRO2MV
0048	141288			BTXP	xbt 0029 Probe T-4	GDC	46-595S	053-234W	HYDRO2MV
0058	141288			BTXP	xbt 0030 Probe T-4	GDC	47-029S	052-262W	HYDRO2MV
1156	141288			BTXP	xbt 0031 Probe T-4	GDC	46-598S	051-533W	HYDRO2MV
0731	151288			BTXP	xbt 0032 Probe T-4	GDC	46-557S	051-014W	HYDRO2MV
0934	151288			BTXP	xbt 0033 Probe T-4	GDC	46-568S	050-307W	HYDRO2MV
1924	151288			BTXP	xbt 0034 Probe T-4	GDC	47-023S	049-197W	HYDRO2MV
2053	151288			BTXP	xbt 0035 Probe T-4	GDC	47-001S	048-576W	HYDRO2MV
0550	161288			BTXP	xbt 0036 Probe T-4	GDC	47-006S	048-005W	HYDRO2MV
0750	161288			BTXP	xbt 0037 Probe T-4	GDC	47-005S	047-299W	HYDRO2MV
0226	171288			BTXP	xbt 0038 Probe T-4	GDC	47-009S	046-267W	HYDRO2MV
0424	171288			BTXP	xbt 0039 Probe T-4	GDC	46-594S	045-539W	HYDRO2MV
1425	171288			BTXP	xbt 0040 Probe T-4	GDC	47-008S	044-214W	HYDRO2MV
1643	171288			BTXP	xbt 0041 Probe T-4	GDC	47-002S	043-426W	HYDRO2MV
0501	181288			BTXP	xbt 0042 Probe T-4	GDC	47-002S	042-351W	HYDRO2MV
0721	181288			BTXP	xbt 0043 Probe T-4	GDC	47-006S	041-580W	HYDRO2MV
0951	191288			BTXP	xbt 0044 Probe T-4	GDC	47-035S	040-323W	HYDRO2MV
1250	191288			BTXP	xbt 0045 Probe T-4	GDC	47-012S	039-591W	HYDRO2MV
0554	201288			BTXP	xbt 0046 Probe T-4	GDC	47-021S	038-537W	HYDRO2MV
0828	201288			BTXP	xbt 0047 Probe T-4	GDC	47-006S	038-147W	HYDRO2MV

#GMT	DDMMYY	LOC	T	SAMP	SAMPLE	DISP	LAT.	LONG.	CRUISE
#TIME	DATE	TIME	Z	CODE	IDENTIFIER	CODE			LEG-SHIP

2053	201288			BTXP	xbt 0051 Probe T-4	GDC	46-547S	036-594W	HYDRO2MV
2253	201288			BTXP	xbt 0052 Probe T-4	GDC	46-570S	036-323W	HYDRO2MV
0306	211288			BTXP	xbt 0053 Probe T-4	GDC	47-013S	035-470W	HYDRO2MV
0543	211288			BTXP	xbt 0054 Probe T-4	GDC	46-573S	035-076W	HYDRO2MV
1101	211288			BTXP	xbt 0055 Probe T-4	GDC	47-008S	034-127W	HYDRO2MV
1526	211288			BTXP	xbt 0056 Probe T-4	GDC	47-007S	033-317W	HYDRO2MV
2018	211288			BTXP	xbt 0057 Probe T-4	GDC	47-025S	033-068W	HYDRO2MV
1937	221288			BTXP	xbt 0058 Probe T-4	GDC	46-517S	031-590W	HYDRO2MV
2157	221288			BTXP	xbt 0059 Probe T-4	GDC	46-549S	031-253W	HYDRO2MV
0735	231288			BTXP	xbt 0060 Probe T-4	GDC	47-028S	030-077W	HYDRO2MV
0949	231288			BTXP	xbt 0061 Probe T-4	GDC	47-006S	029-330W	HYDRO2MV
1951	231288			BTXP	xbt 0062 Probe T-4	GDC	46-572S	028-237W	HYDRO2MV
2212	231288			BTXP	xbt 0063 Probe T-4	GDC	46-590S	027-502W	HYDRO2MV
0752	241288			BTXP	xbt 0064 Probe T-4	GDC	47-000S	026-252W	HYDRO2MV
0947	241288			BTXP	xbt 0065 Probe T-4	GDC	46-599S	025-519W	HYDRO2MV
1734	241288			BTXP	xbt 0066 Probe T-4	GDC	46-599S	024-480W	HYDRO2MV
2040	241288			BTXP	xbt 0067 Probe T-4	GDC	46-598S	024-015W	HYDRO2MV
1626	251288			BTXP	xbt 0068 Probe T-4	GDC	46-570S	022-552W	HYDRO2MV
1730	251288			BTXP	xbt 0069 Probe T-4	GDC	46-576S	022-367W	HYDRO2MV
2251	251288			BTXP	xbt 0070 Probe T-4	GDC	47-016S	021-269W	HYDRO2MV
1637	261288			BTXP	xbt 0071 Probe T-4	GDC	46-587S	020-100W	HYDRO2MV
0351	271288			BTXP	xbt 0072 Probe T-4	GDC	46-372S	019-079W	HYDRO2MV
0623	271288			BTXP	xbt 0073 Probe T-4	GDC	46-148S	018-446W	HYDRO2MV
1509	271288			BTXP	xbt 0074 Probe T-4	GDC	45-296S	017-537W	HYDRO2MV
1735	271288			BTXP	xbt 0075 Probe T-4	GDC	45-073S	017-338W	HYDRO2MV
0127	281288			BTXP	xbt 0076 Probe T-4	GDC	44-349S	016-579W	HYDRO2MV
0346	281288			BTXP	xbt 0078 Probe T-4	GDC	44-140S	016-338W	HYDRO2MV
1311	281288			BTXP	xbt 0079 Probe T-4	GDC	44-059S	017-224W	HYDRO2MV
1523	281288			BTXP	xbt 0080 Probe T-4	GDC	41-563S	015-188W	HYDRO2MV
0558	291288			BTXP	xbt 0081 Probe T-4	GDC	41-208S	014-357W	HYDRO2MV
0737	291288			BTXP	xbt 0082 Probe T-4	GDC	41-052S	014-249W	HYDRO2MV
1400	291288			BTXP	xbt 0083 Probe T-4	GDC	40-377S	014-064W	HYDRO2MV
1602	291288			BTXP	xbt 0084 Probe T-4	GDC	41-253S	013-480W	HYDRO2MV
0002	301288			BTXP	xbt 0085 Probe T-4	GDC	40-496S	013-103W	HYDRO2MV
0520	301288			BTXP	xbt 0091 Probe T-4	GDC	40-096S	012-374W	HYDRO2MV
1646	301288			BTXP	xbt 0092 Probe T-4	GDC	39-383S	012-022W	HYDRO2MV
1959	301288			BTXP	xbt 0093 Probe T-4	GDC	39-042S	011-380W	HYDRO2MV
0542	311288			BTXP	xbt 0094 Probe T-4	GDC	38-262S	011-059W	HYDRO2MV
0933	311288			BTXP	xbt 0095 Probe T-4	GDC	37-590S	010-356W	HYDRO2MV
1226	311288			BTXP	xbt 0099 Probe T-4	GDC	37-342S	010-177W	HYDRO2MV

#GMT #TIME	DDMMYY DATE	LOC TIME	T -Z	SAMP CODE	SAMPLE IDENTIFIER	DISP CODE	LAT.	LONG.	CRUISE LEG-SHIP
1947	311288			BTXP	xbt 0100 Probe T-4	GDC	37-009S	009-454W	HYDRO2MV
2208	311288			BTXP	xbt 0101 Probe T-4	GDC	36-392S	009-267W	HYDRO2MV
1341	010189			BTXP	xbt 0102 Probe T-4	GDC	35-587S	008-562W	HYDRO2MV
1611	010189			BTXP	xbt 0103 Probe T-4	GDC	35-362S	008-366W	HYDRO2MV
0418	020189			BTXP	xbt 0104 Probe T-4	GDC	34-499S	007-514W	HYDRO2MV
0654	020189			BTXP	xbt 0105 Probe T-4	GDC	34-271S	007-315W	HYDRO2MV
2021	020189			BTXP	xbt 0106 Probe T-4	GDC	33-283S	006-465W	HYDRO2MV
2206	020189			BTXP	xbt 0107 Probe T-4	GDC	33-131S	006-316W	HYDRO2MV
1436	030189			BTXP	xbt 0108 Probe T-4	GDC	32-437S	006-019W	HYDRO2MV
1750	030189			BTXP	xbt 0109 Probe T-4	GDC	32-135S	005-410W	HYDRO2MV
0153	040189			BTXP	xbt 0110 Probe T-4	GDC	31-408S	005-168W	HYDRO2MV
0412	040189			BTXP	xbt 0111 Probe T-4	GDC	31-224S	005-000W	HYDRO2MV
1344	040189			BTXP	xbt 0112 Probe T-4	GDC	30-340S	004-162W	HYDRO2MV
1522	040189			BTXP	xbt 0113 Probe T-4	GDC	30-179S	004-056W	HYDRO2MV
0351	050189			BTXP	xbt 0114 Probe T-4	GDC	29-577S	003-213W	HYDRO2MV
0554	050189			BTXP	xbt 0115 Probe T-4	GDC	29-591S	002-565W	HYDRO2MV
1405	050189			BTXP	xbt 0116 Probe T-4	GDC	29-595S	001-588W	HYDRO2MV
9	050189			BTXP	xbt 0117 Probe T-4	GDC	29-596S	001-386W	HYDRO2MV
0,43	060189			BTXP	xbt 0118 Probe T-4	GDC	29-588S	000-538W	HYDRO2MV
0755	060189			BTXP	xbt 0119 Probe T-4	GDC	29-587S	000-518W	HYDRO2MV
0947	060189			BTXP	xbt 0120 Probe T-4	GDC	29-593S	000-302W	HYDRO2MV
1757	060189			BTXP	xbt 0121 Probe T-4	GDC	30-001S	000-269E	HYDRO2MV
1927	060189			BTXP	xbt 0122 Probe T-4	GDC	29-599S	000-460E	HYDRO2MV
0137	070189			BTXP	xbt 0123 Probe T-4	GDC	29-590S	001-290E	HYDRO2MV
0907	070189			BTXP	xbt 0124 Probe T-4	GDC	29-587S	002-219E	HYDRO2MV
1132	070189			BTXP	xbt 0125 Probe T-7	GDC	29-596S	002-518E	HYDRO2MV
1339	070189			BTXP	xbt 0126 Probe T-7	GDC	30-001S	003-182E	HYDRO2MV
2110	070189			BTXP	xbt 0127 Probe T-7	GDC	30-004S	004-057E	HYDRO2MV
1255	080189			BTXP	xbt 0128 Probe T-7	GDC	30-000S	004-488E	HYDRO2MV
1538	080189			BTXP	xbt 0129 Probe T-7	GDC	29-592S	005-216E	HYDRO2MV
0031	090189			BTXP	xbt 0130 Probe T-4	GDC	29-593S	006-209E	HYDRO2MV
0207	090189			BTXP	xbt 0131 Probe T-4	GDC	29-593S	006-419E	HYDRO2MV
1528	090189			BTXP	xbt 0132 Probe T-7	GDC	29-574S	007-316E	HYDRO2MV
1113	100189			BTXP	xbt 0133 Probe T-7	GDC	30-024S	009-036E	HYDRO2MV
2204	100189			BTXP	xbt 0134 Probe T-7	GDC	30-000S	010-001E	HYDRO2MV
0628	110189			BTXP	xbt 0135 Probe T-7	GDC	30-001S	010-522E	HYDRO2MV
1330	110189			BTXP	xbt 0136 Probe T-7	GDC	30-006S	011-412E	HYDRO2MV
1948	110189			BTXP	xbt 0137 Probe T-7	GDC	30-000S	012-176E	HYDRO2MV
0814	120189			BTXP	xbt 0138 Probe T-7	GDC	30-005S	012-447E	HYDRO2MV
1753	120189			BTXP	xbt 0139 Probe T-7	GDC	29-598S	013-228E	HYDRO2MV
0727	130189			BTXP	xbt 0140 Probe T-7	GDC	30-052S	014-208E	HYDRO2MV
1024	130189			BTXP	xbt 0141 Probe T-4	GDC	29-589S	014-448E	HYDRO2MV
753	130189			BTXP	xbt 0142 Probe T-4	GDC	29-588S	015-169E	HYDRO2MV

#***

END SAMPLE INDEX