

REPORT AND INDEX OF
UNDERWAY MARINE GEOPHYSICAL DATA

BOOMERANG EXPEDITION

LEG 1

(BMRG01MV)

R/V MELVILLE

(Issued February 1996)

Ports:

San Diego, California (15 October 1995)
to
Papeete, Tahiti (23 November 1995)

Chief Scientist: John Orcutt

(Scripps Institution of Oceanography)

Resident Marine Technician - Ron Comer

Computer Technician - Todd Porteous

Post-Cruise Processing and Report Preparation by the
Geological Data Center, Scripps Institution of Oceanography
La Jolla, California 92093-0223

Data Collection and Processing Funded by:
NSF OCE94-00707

NOTE: *This is an index of underway geophysical data edited and processed after the completion of the cruise leg and is intended primarily for informal use within the institution. This document is not to be reproduced or distributed outside Scripps without prior approval of the chief scientist or the Geological Data Center, Scripps Institution of Oceanography, La Jolla, California 92093-0223*

GDC Cruise I.D.# 267

**REPORT AND INDEX OF NAVIGATION
AND UNDERWAY GEOPHYSICAL DATA**

Processed by the Geological Data Center
Scripps Institution of Oceanography

Contents:

Index Chart - gives track of cruise leg, dates, ports, and mileage of each type of data collected.

Track Charts - annotated with dates and hour ticks.

Profiles - depth, magnetic and gravity free air anomaly vs. distance. (Sections of track with seismic reflection data have a wide black line along the bottom of the profile.)

Sample Index - list of begin/end times and positions of all underway records as well as samples and measurements from other disciplines if collected on the cruise leg.

NOTE: One or more of the underway data types may not be collected on a given cruise leg. For information on the availability and reproduction costs of data in the following forms, contact S.M. Smith, Curator, Geological Data Center, Scripps Institution of Oceanography, La Jolla, California 92093-0223.

Phone: (619)534-2752, FAX: (619)534-5306, Internet email: ssmith@ucsd.edu

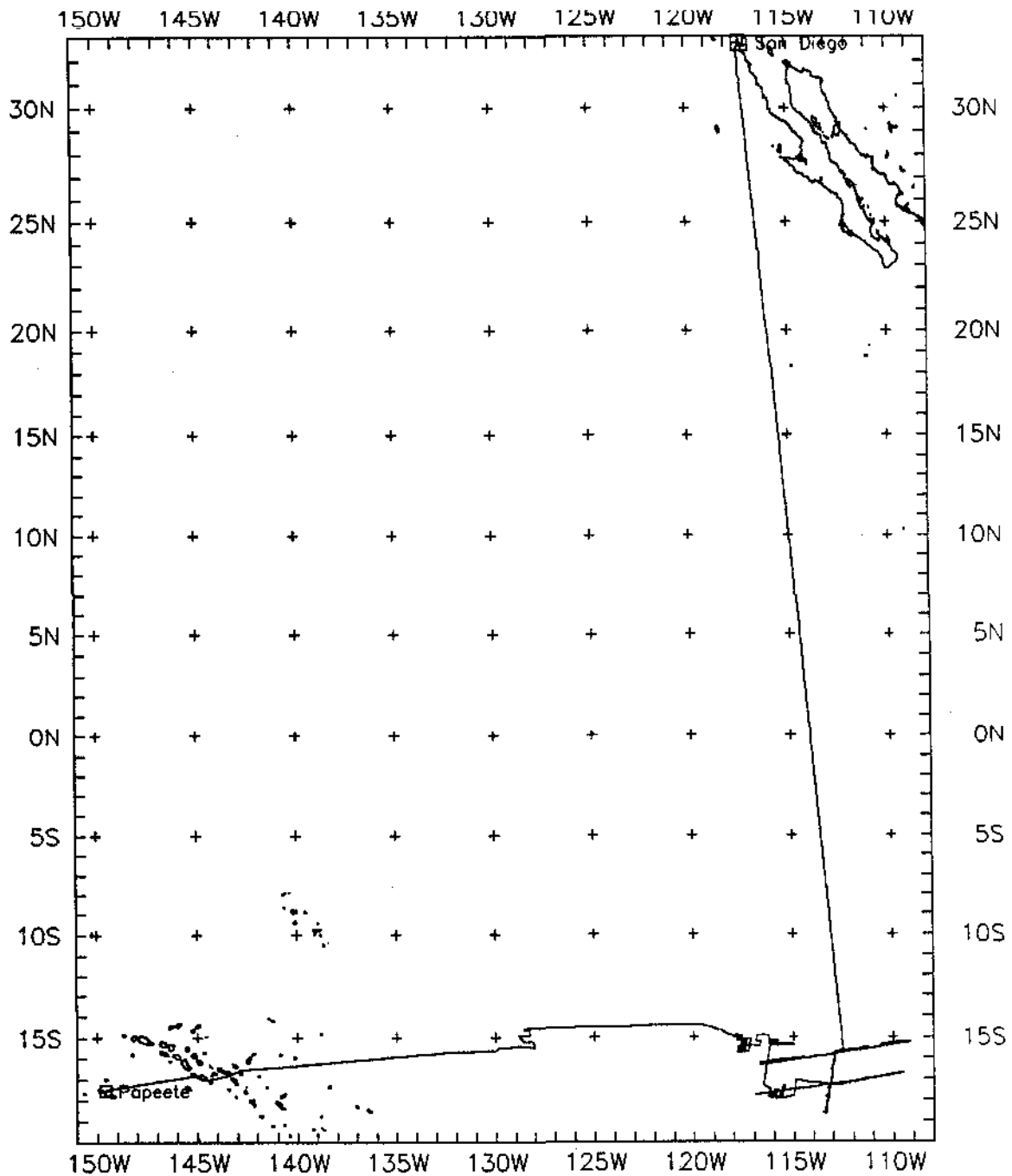
1. Files on Exabyte, DAT or 1/2 inch magnetic tape:
 - a) Separate time series ASCII files of navigation, single beam depth, gravity and magnetics.
 - b) These same data in a merged ASCII file in the MGD77 Exchange Format.
 - c) SeaBeam depth data (binary, Sun byte order) in SIO Swath Bathymetry Format (not available on 1/2" tape).
 - d) SeaBeam Sidescan data (not available on 1/2" tape).
2. Microfilm (35 mm flowfilm) or hard copies of:
 - a) Underway watch log book
 - b) SeaBeam vertical beam profile/Sidescan records.
 - c) Echosounder records - 3.5 kHz frequency.
 - d) Magnetometer records.
 - e) Seismic reflection profiler records.
3. Navigation listing with times and positions of fixes and course and speed changes.
4. Plots:
 - a) Copies of archived track plots.
 - b) Copies of archived SeaBeam contour plots.
 - c) Custom plots in Mercator projection:
 - 1) Track plots.
 - 2) SeaBeam depth contour plots.
 - 3) Depth, magnetic or gravity values printed or profiled along track.

Sea Beam 2000 Data Collected in Ancillary Mode

In the absence of funding for Sea Beam operations on this leg, Sea Beam data were collected in "ancillary mode". In this mode of operation, no Hardware Technician or SB/Underway Processor were on board and the types of realtime records and post-processed data products are reduced from those available under the fully funded mode.

The Sea Beam data remain proprietary to the SIO Shipboard Technical Support Group, not the chief scientist.

May 1993



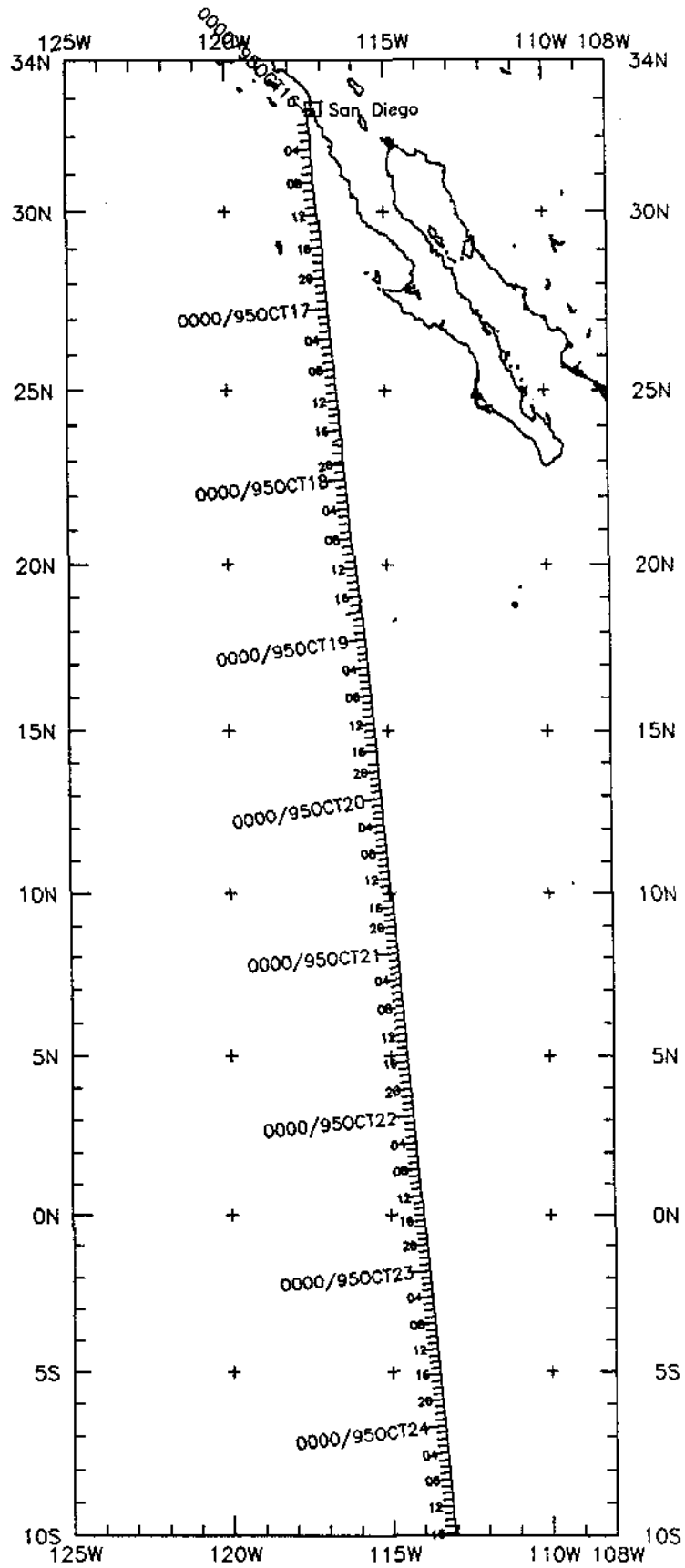
*

BOOMERANG EXPEDITION LEG 1
 =====

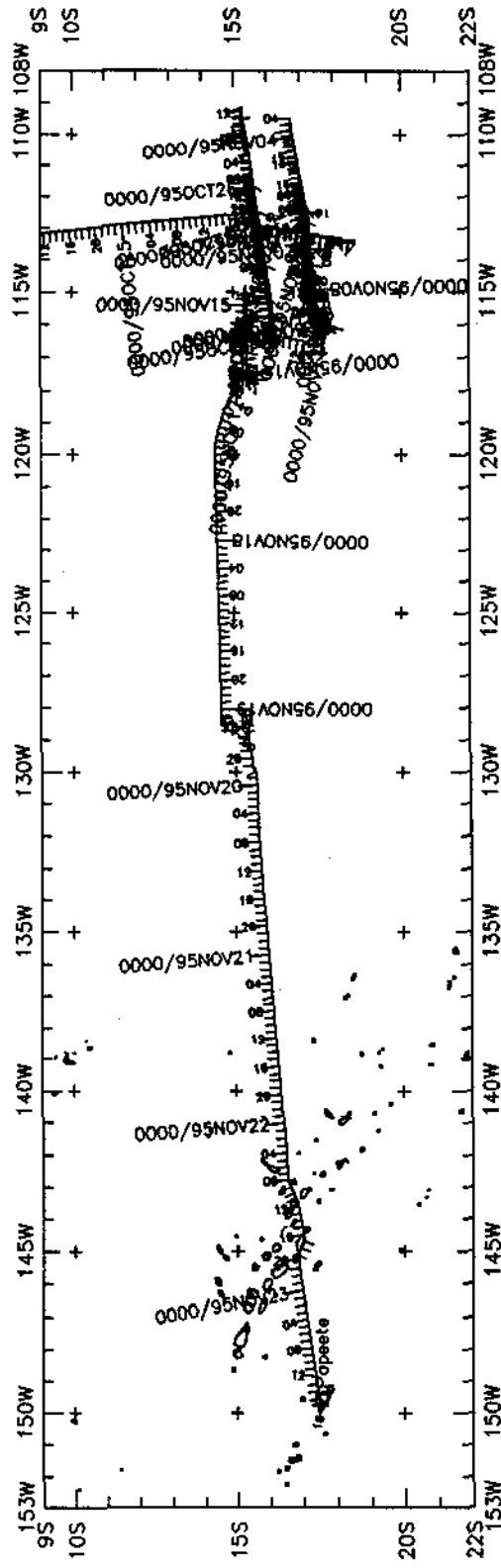
CHIEF SCIENTIST: John Orcutt
 Scripps Institution of Oceanography
 PORTS: San Diego, Calif. - Papeete, Tahiti
 DATES: 15 October - 23 November 1995
 SHIP: R/V Melville

TOTAL MILEAGE OF UNDERWAY DATA COLLECTED

Cruise - 9024 miles	Magnetics - 4615 miles
Bathymetry - 7704 miles	Seismic Reflection - 240 miles
Sea Beam - 7704 miles	Gravity - 8899 miles

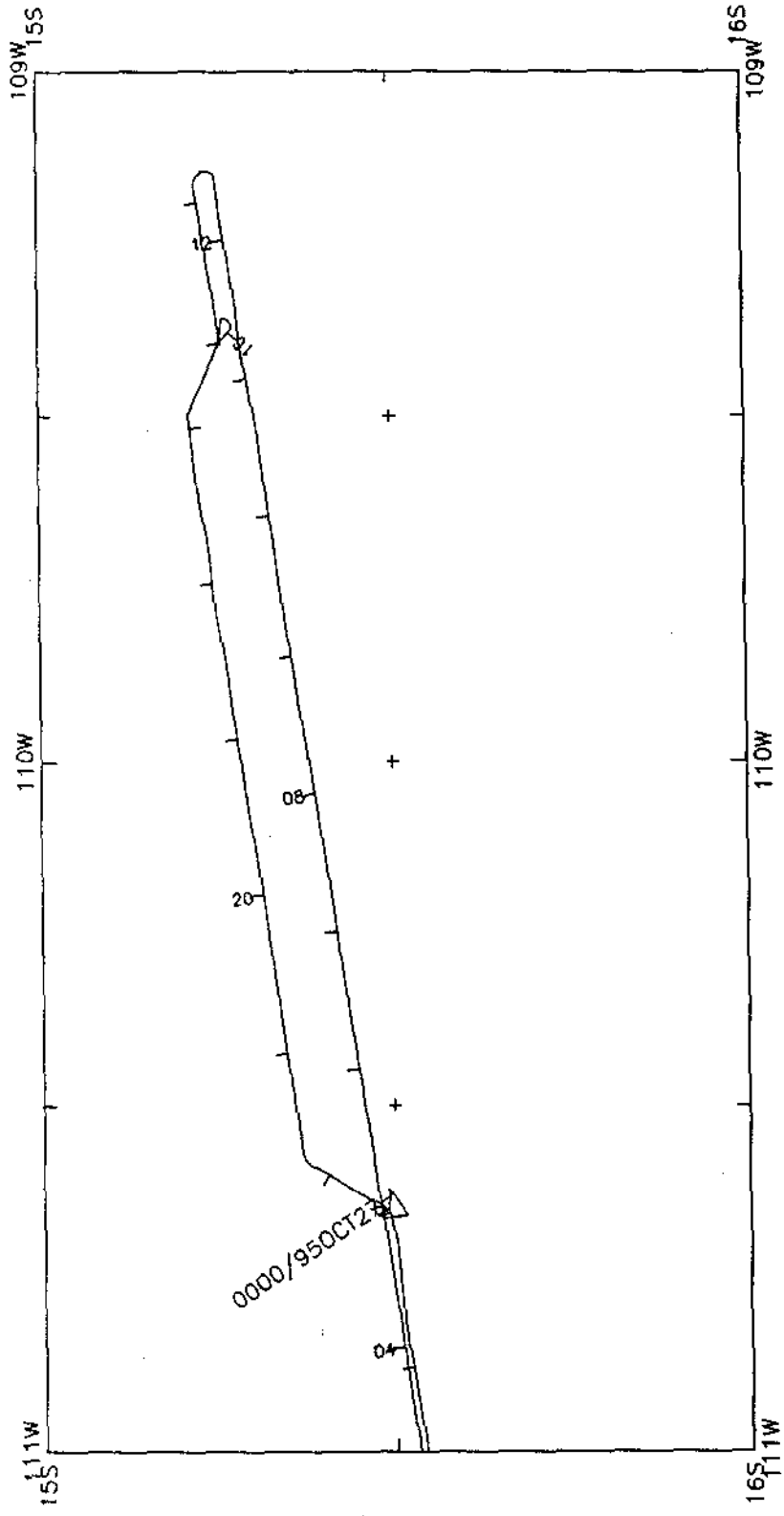


BOOMERANG Expedition LEG 01 *



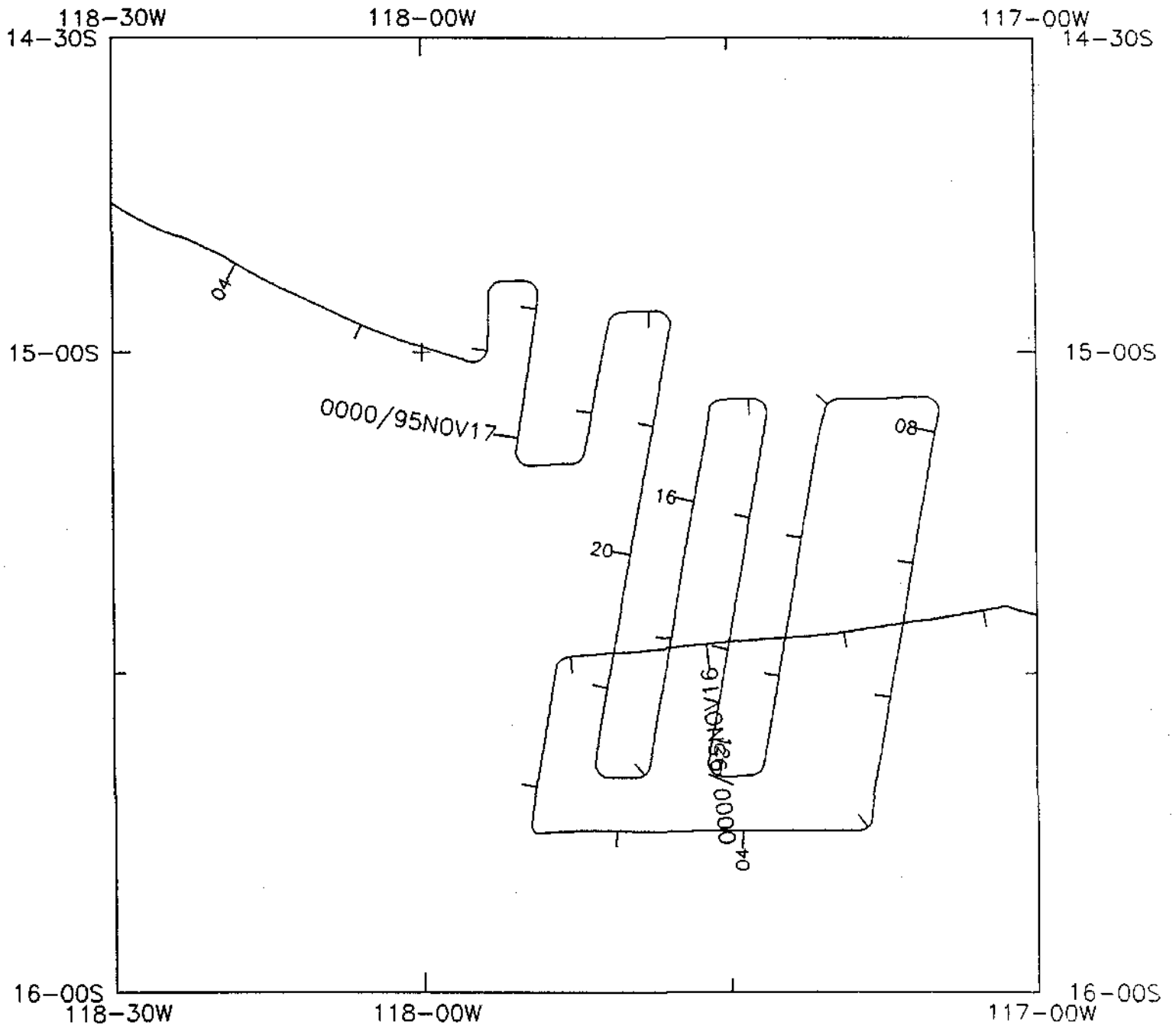
BOOMERANG Expedition LEG 01 (BMRC01MV)

*



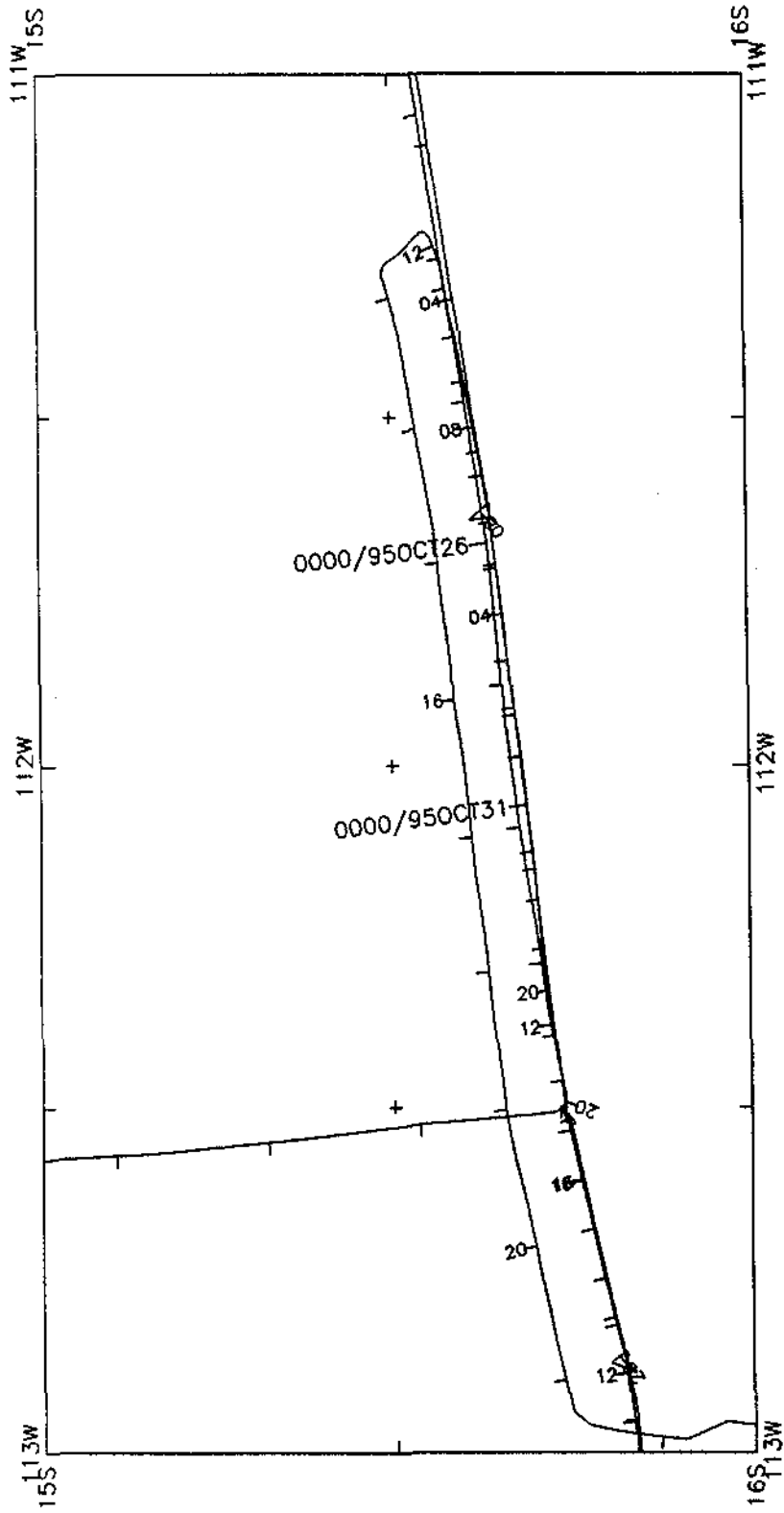
*

BMRG01MV survey A



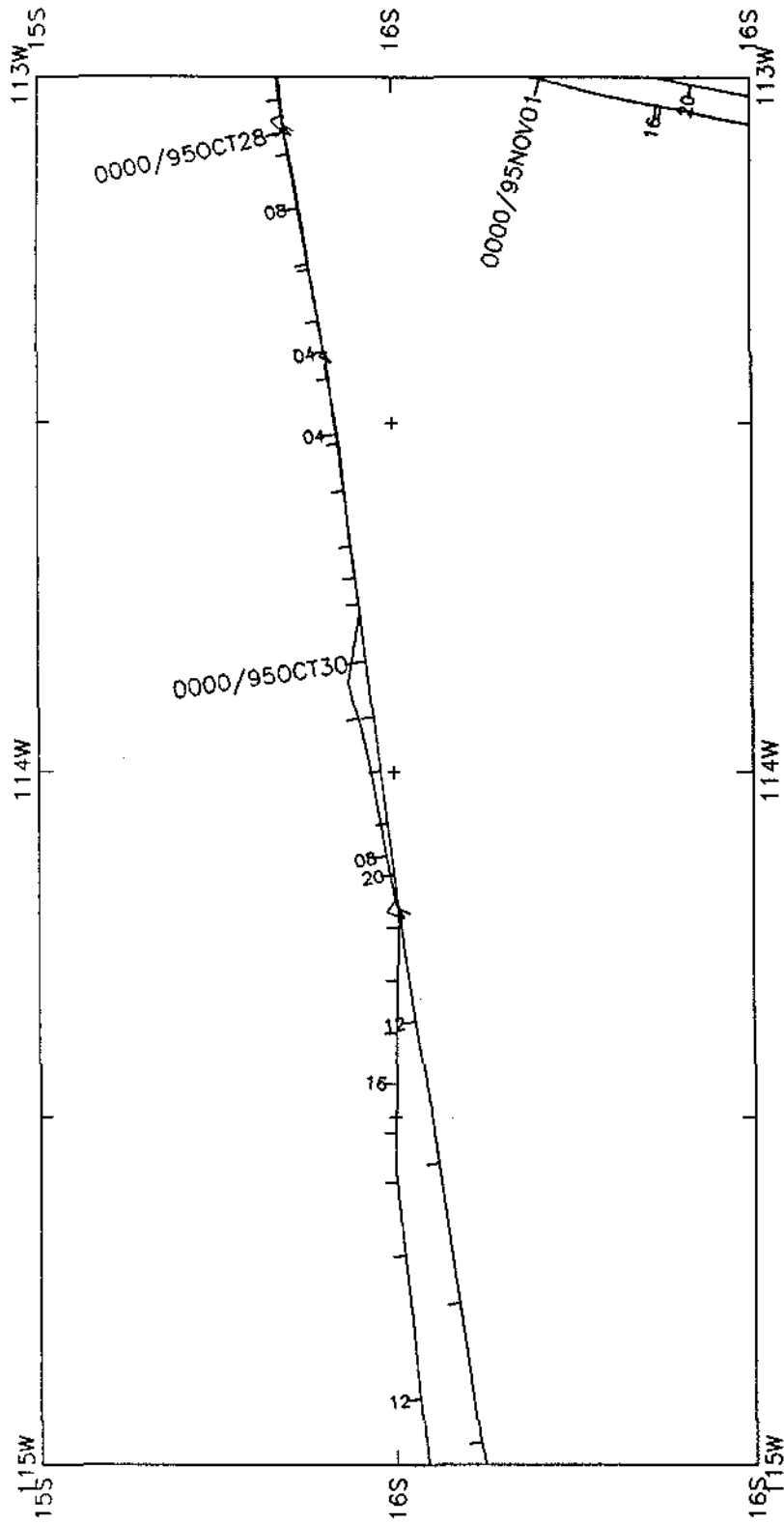
BMRG01MV survey B





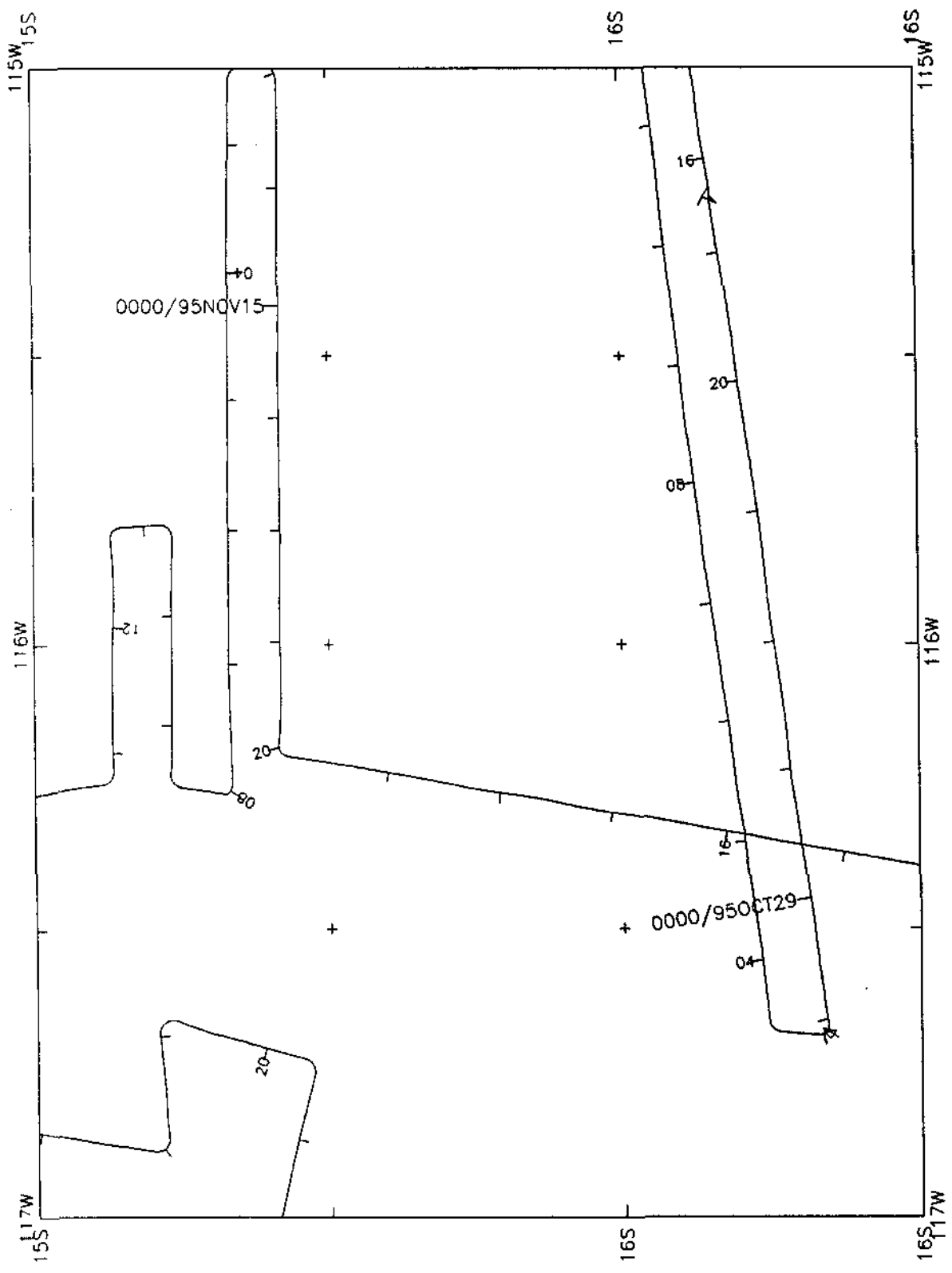
*

BMRG01MV survey C



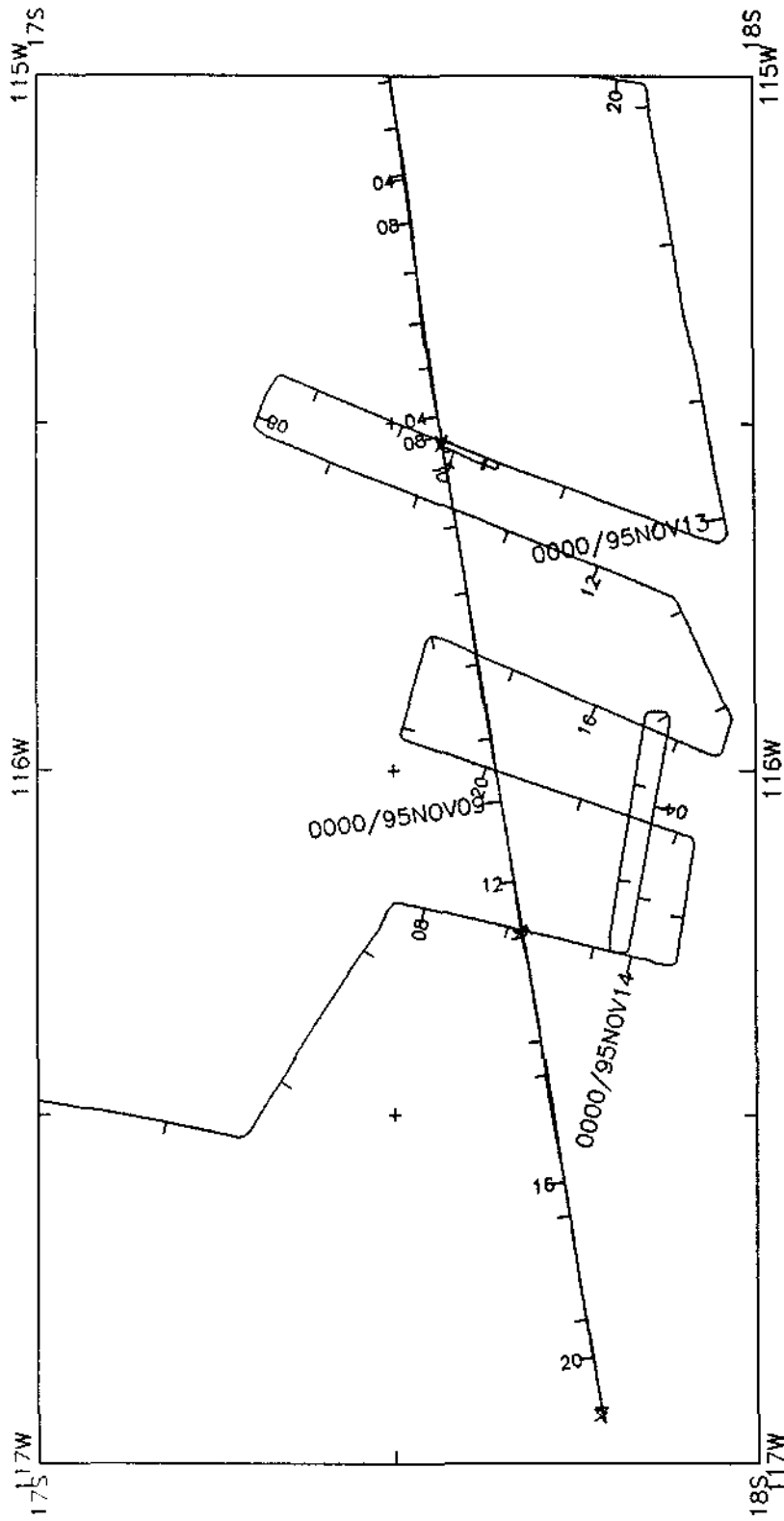
*

BMRG01MV survey D



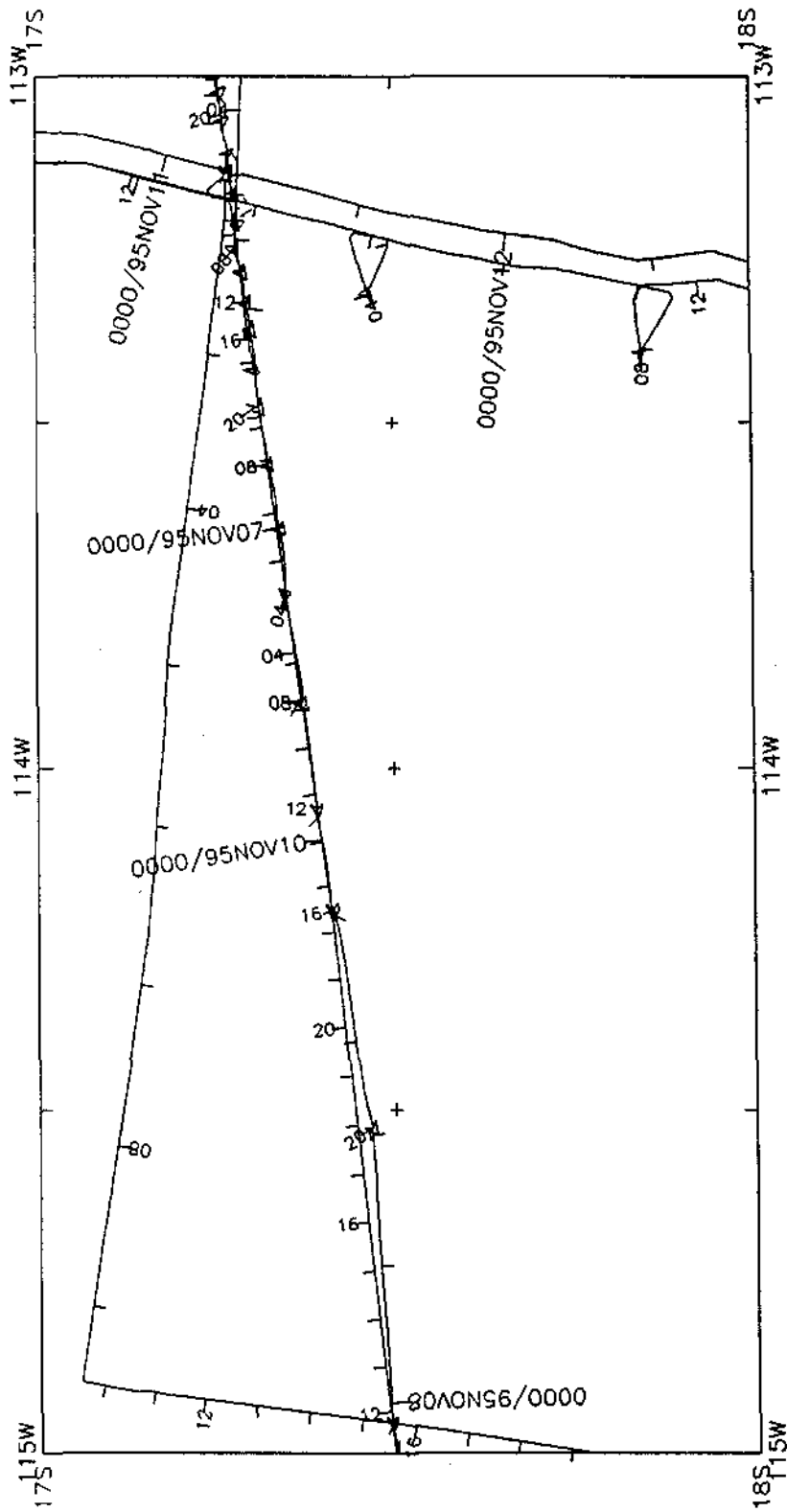
*

BMRC01MV survey E



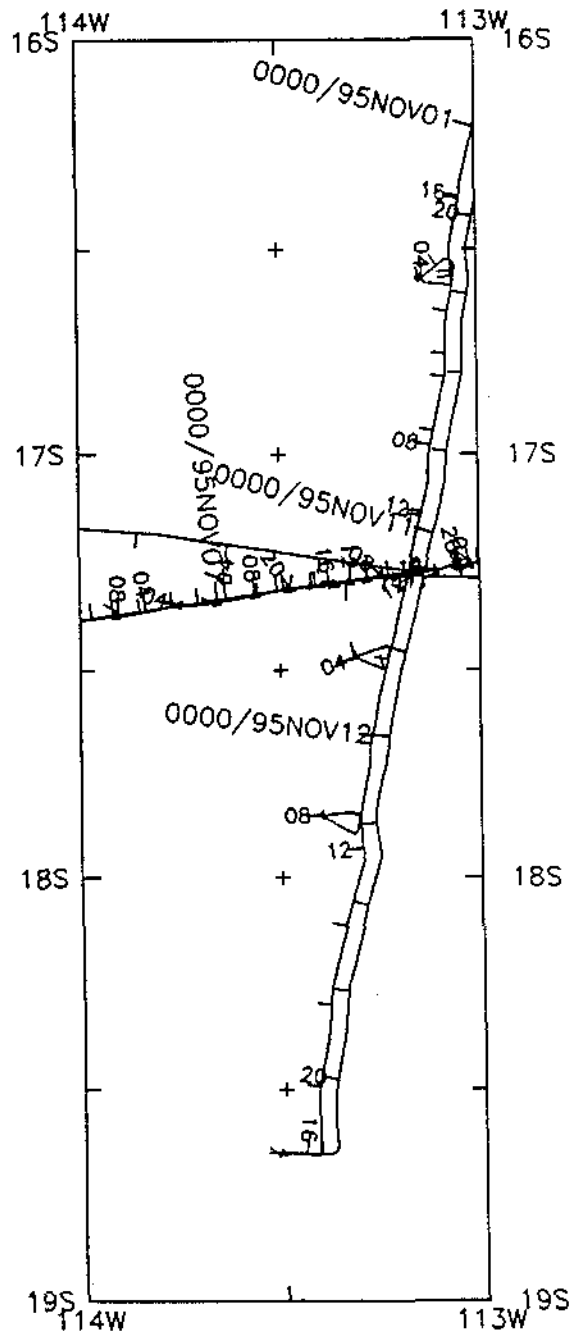
BMRG01MV survey F

*



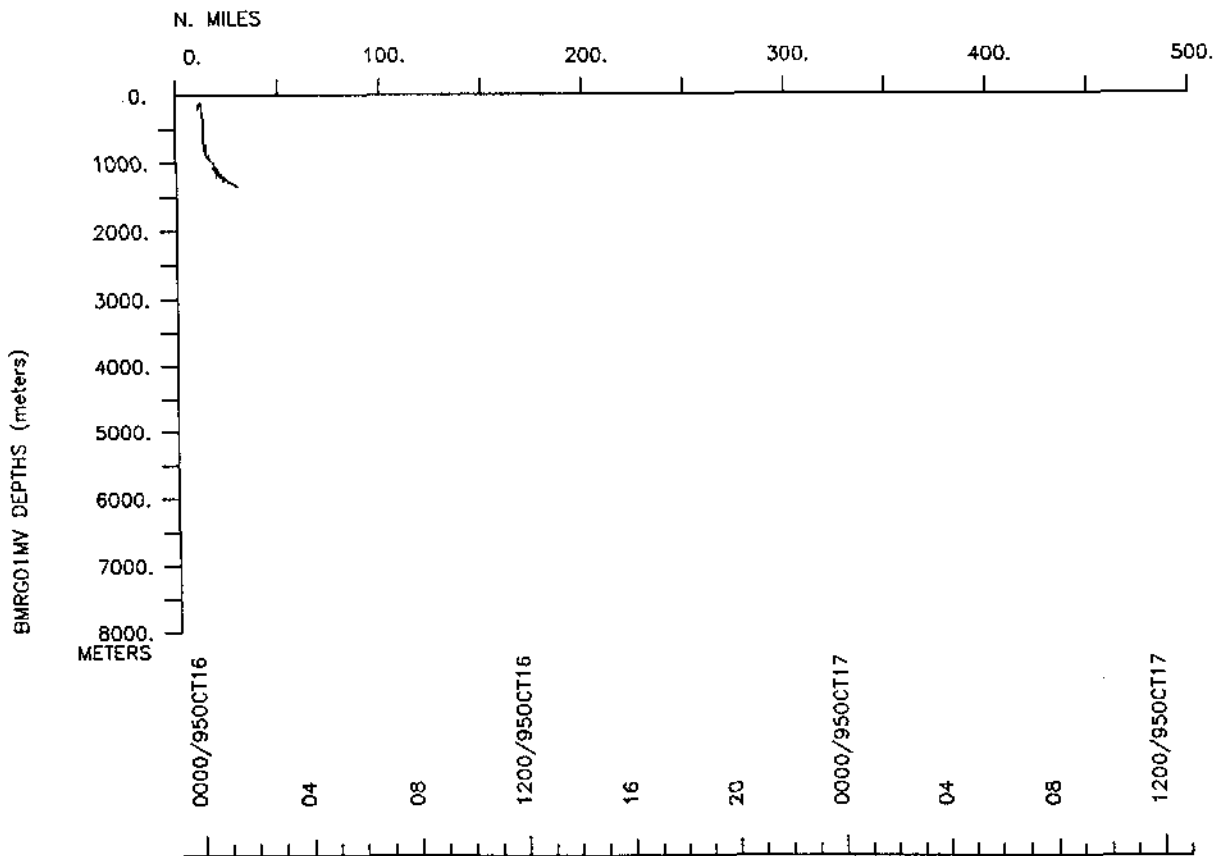
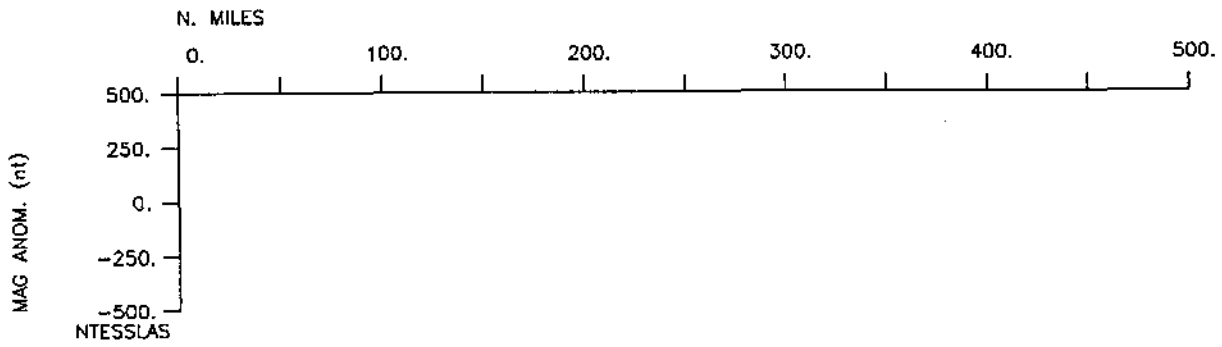
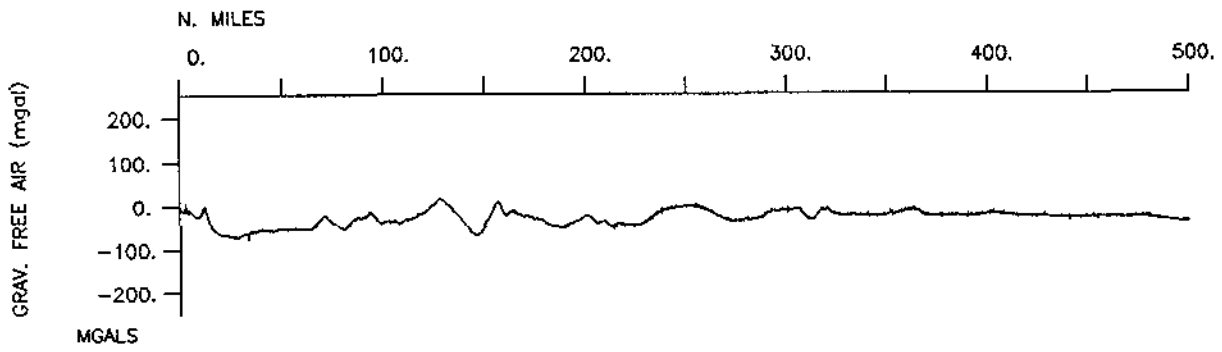
*

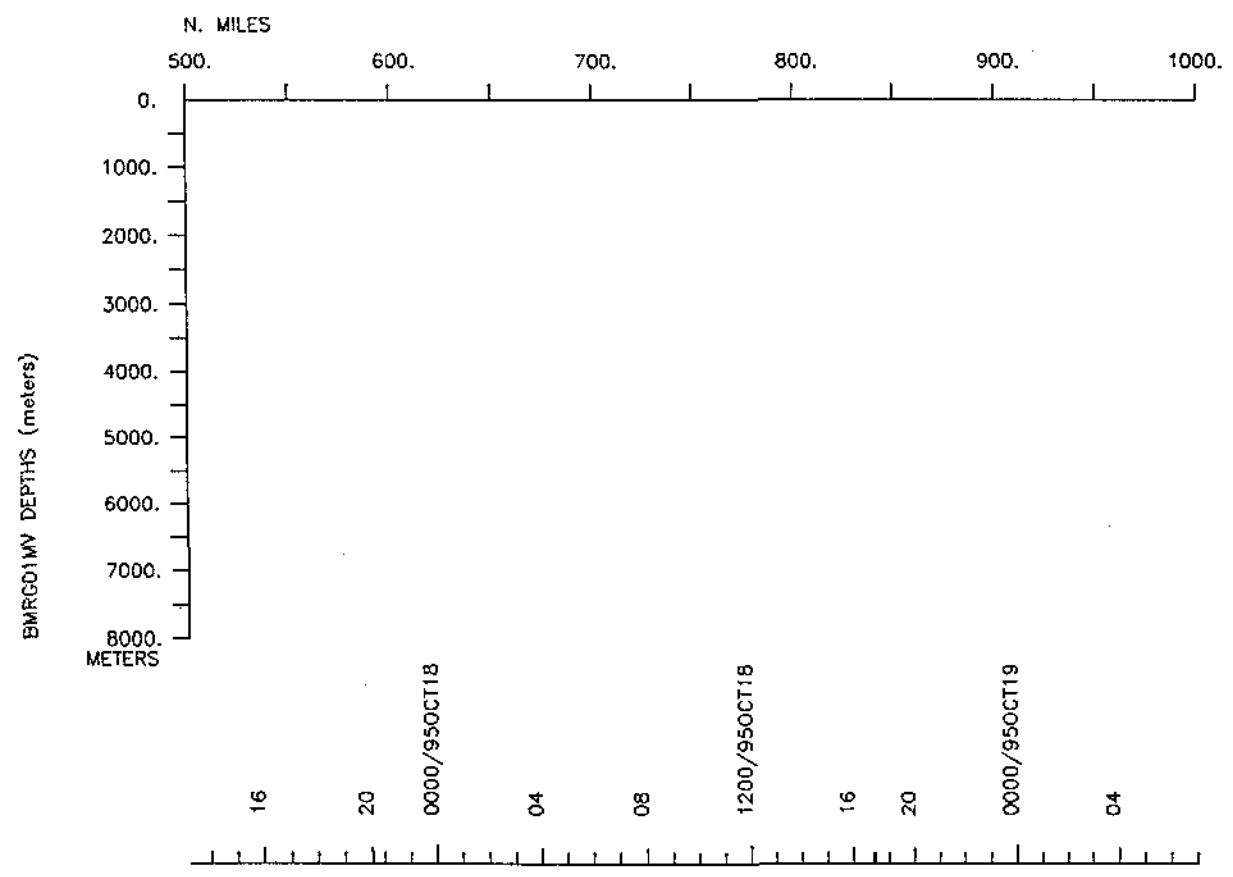
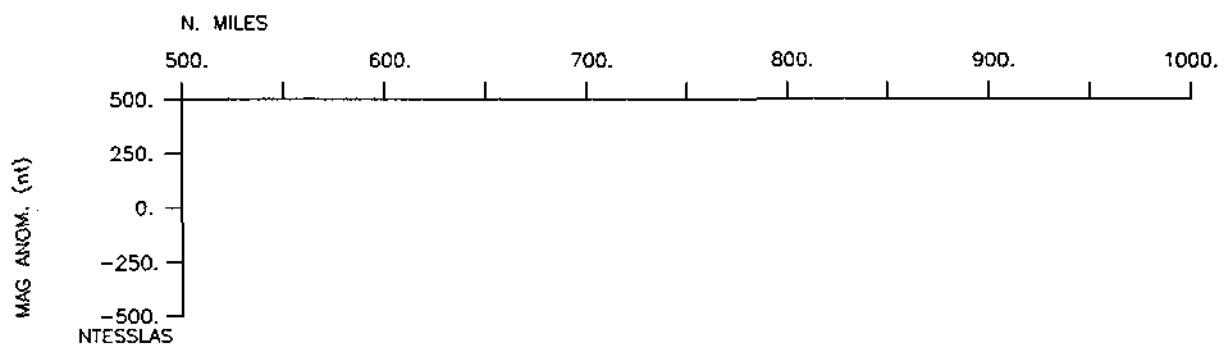
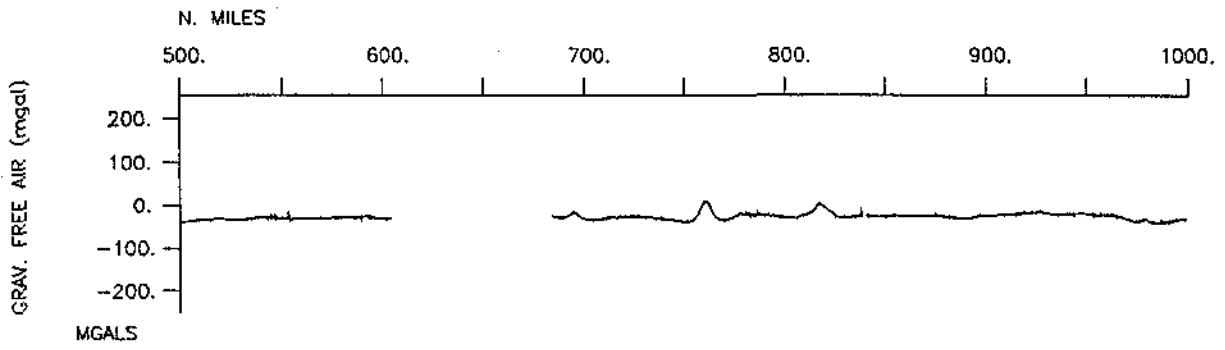
BMRC01MV survey G

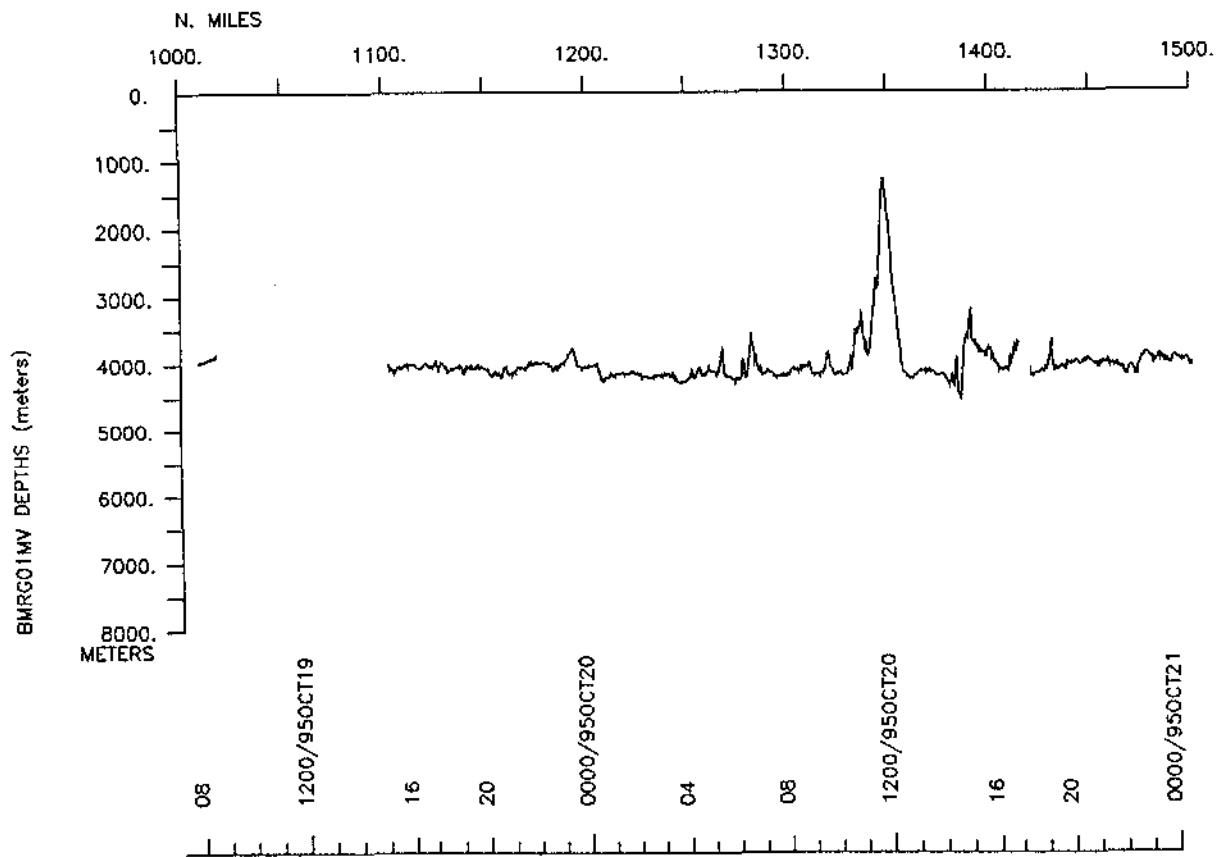
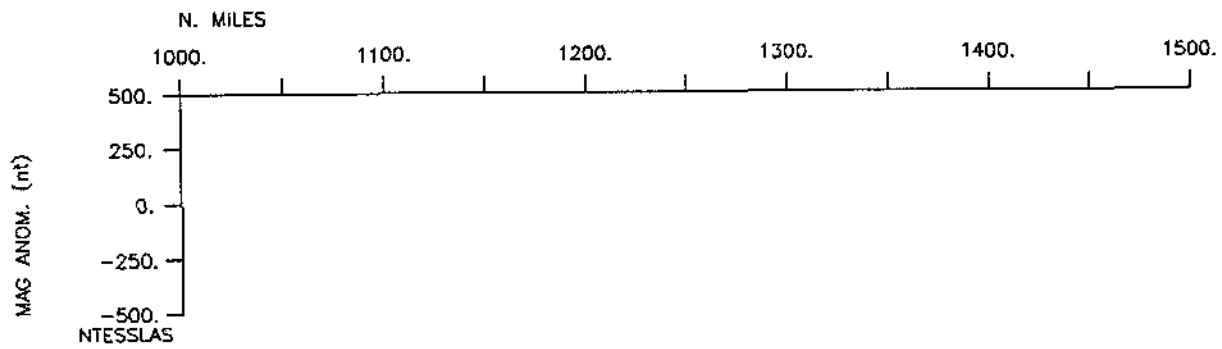
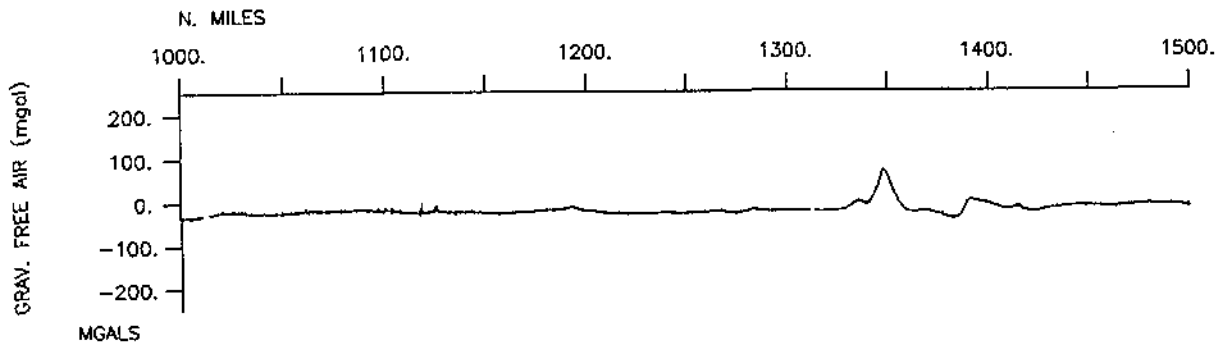


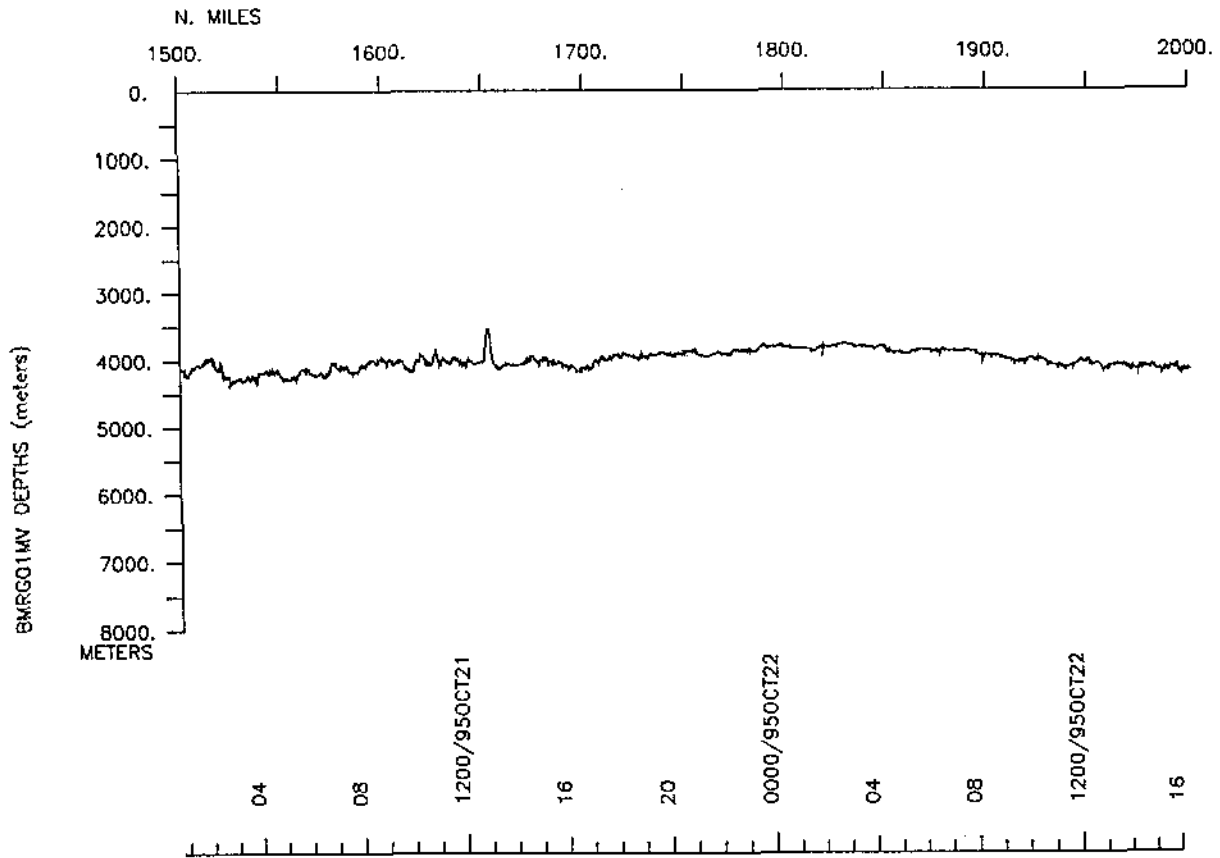
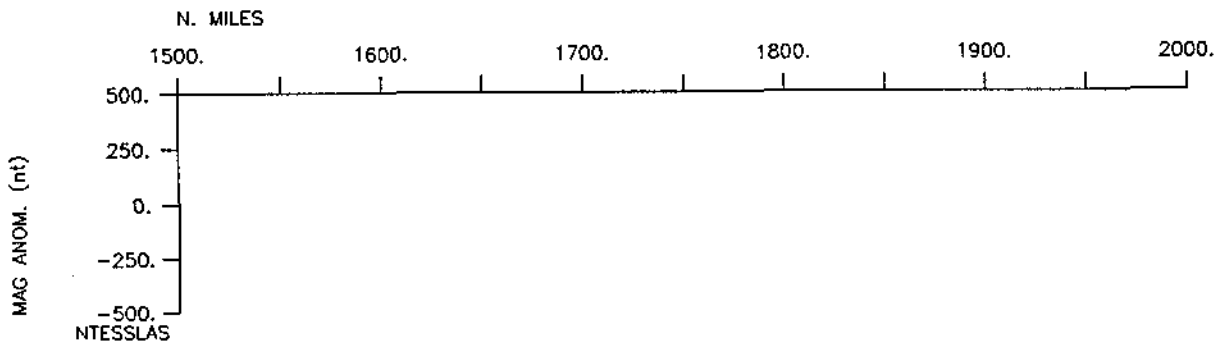
BMRG01MV survey H

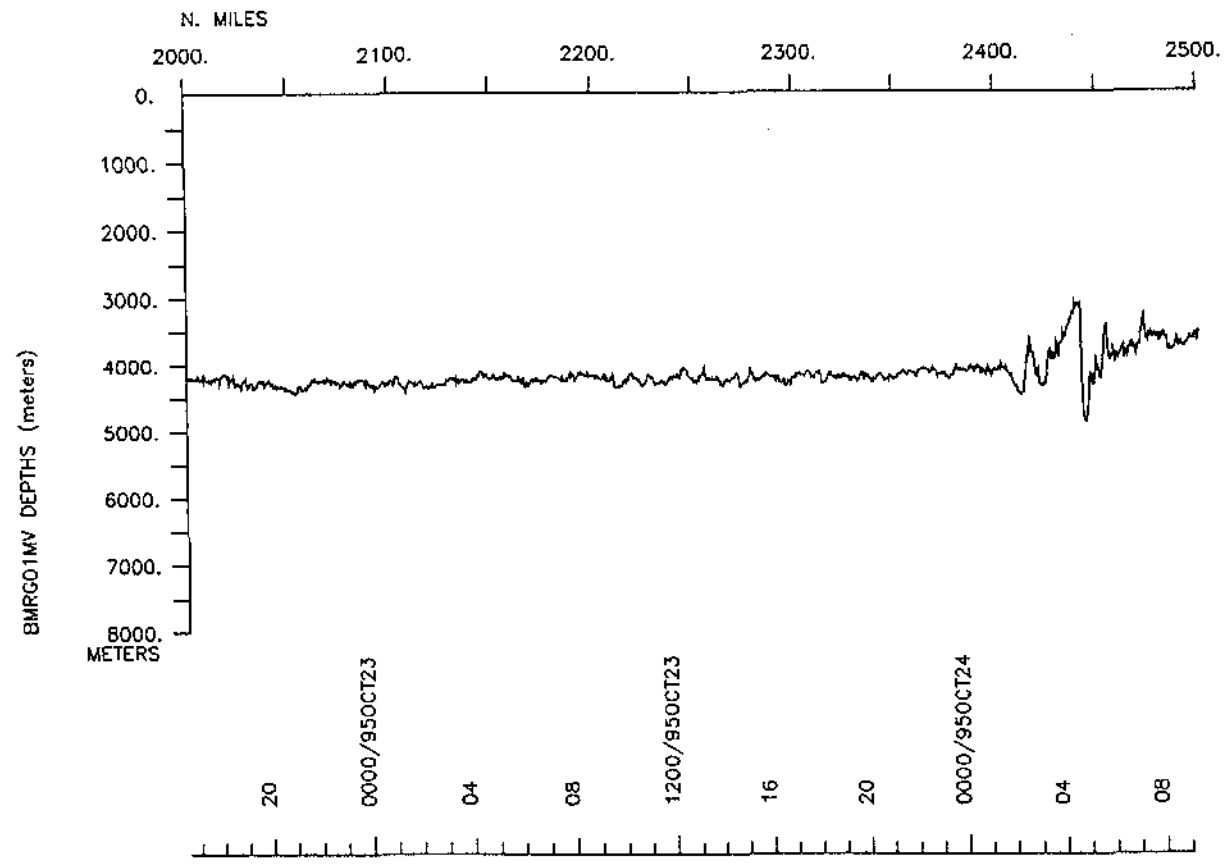
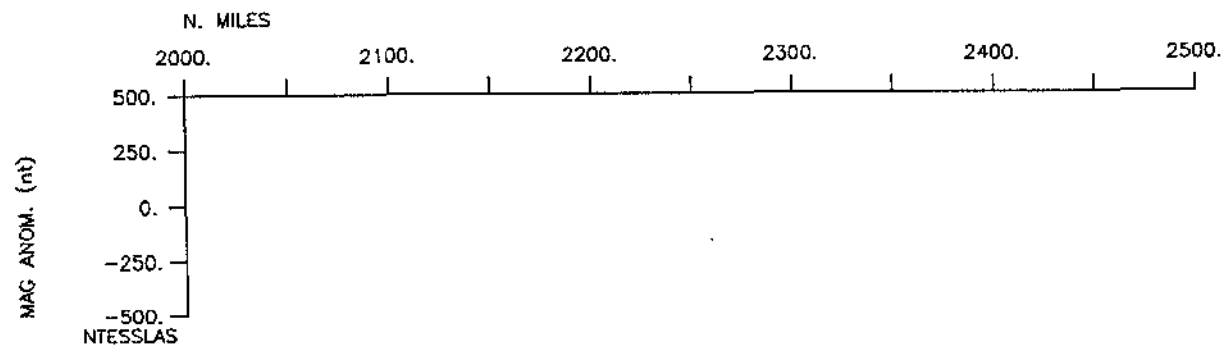
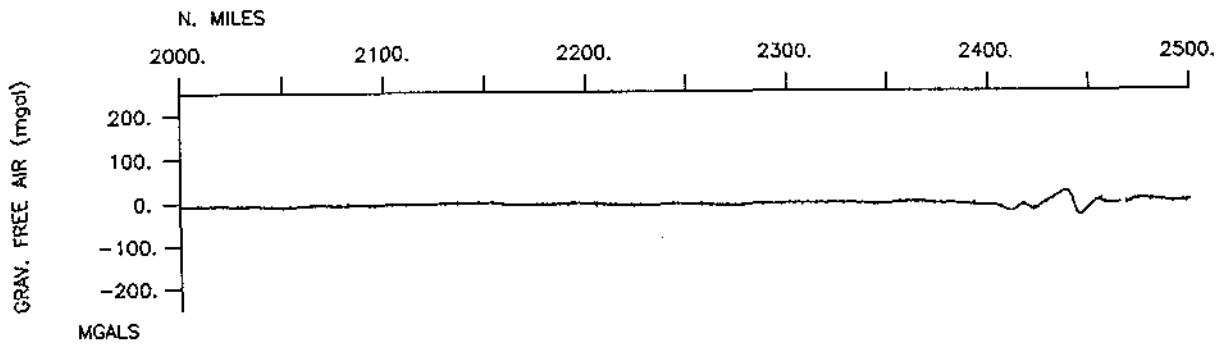
*

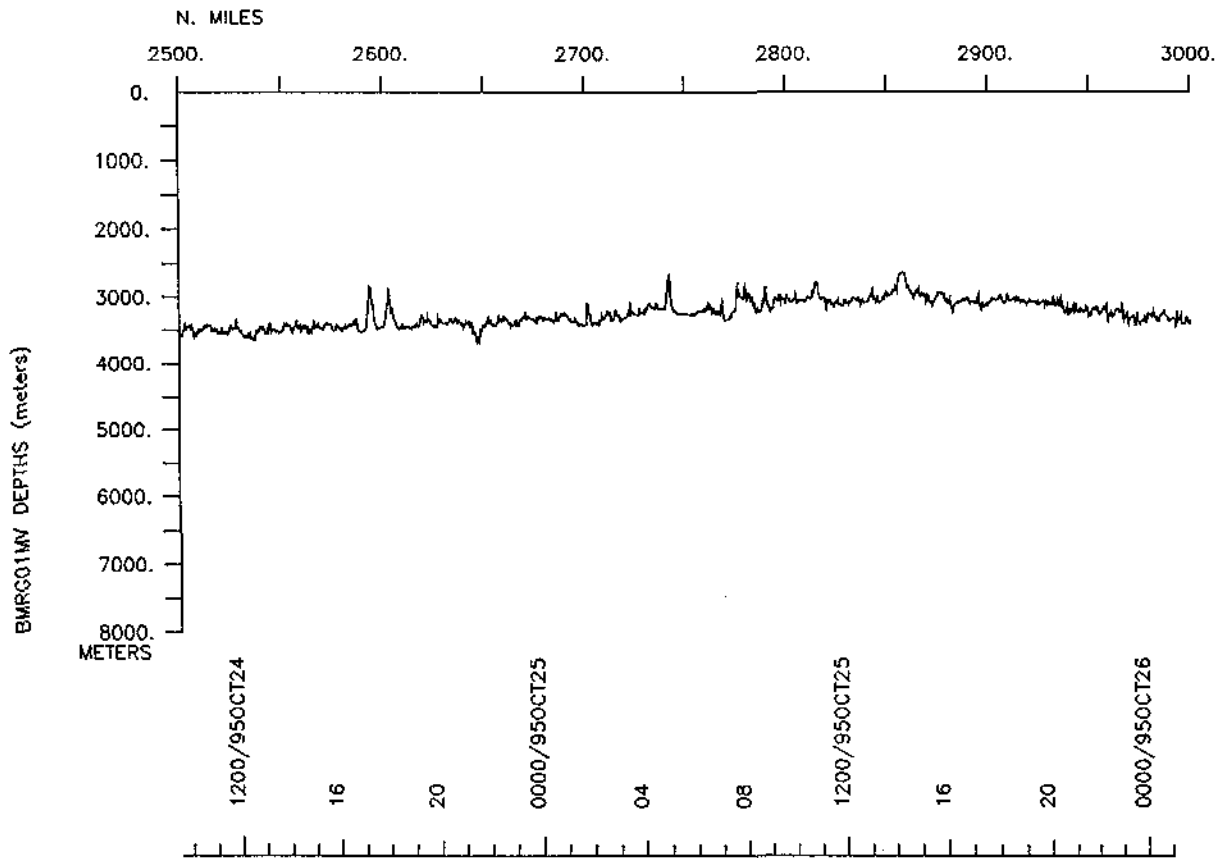
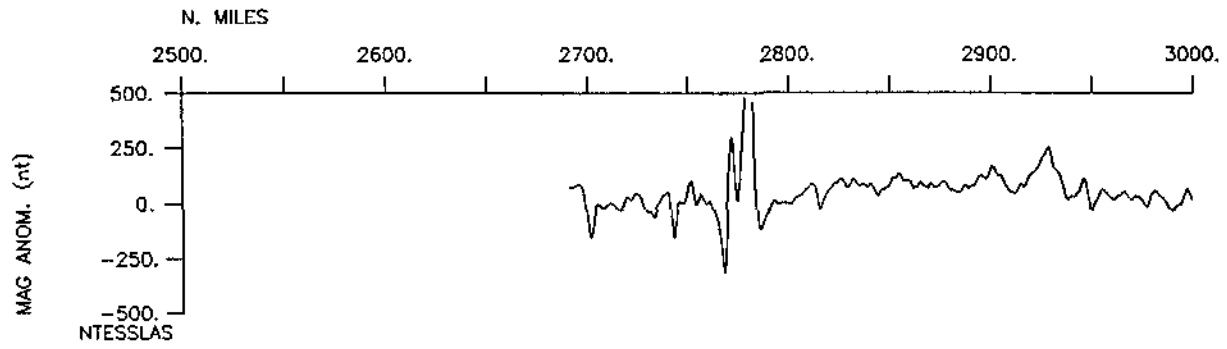
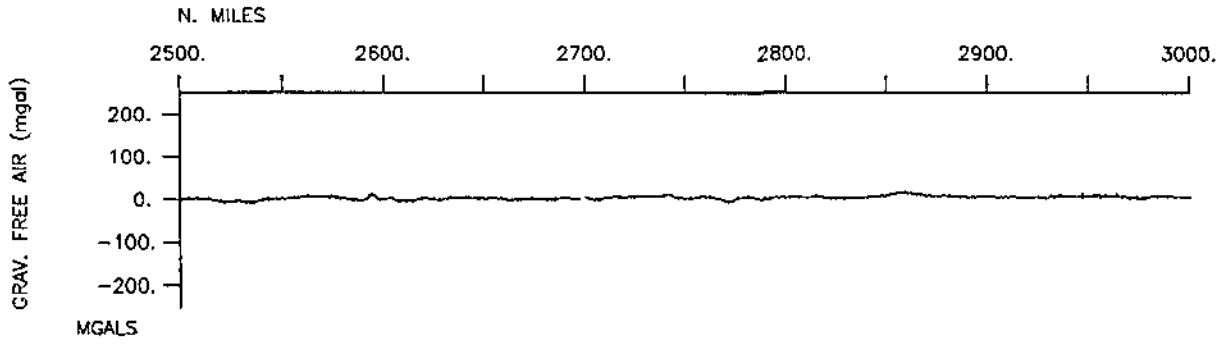


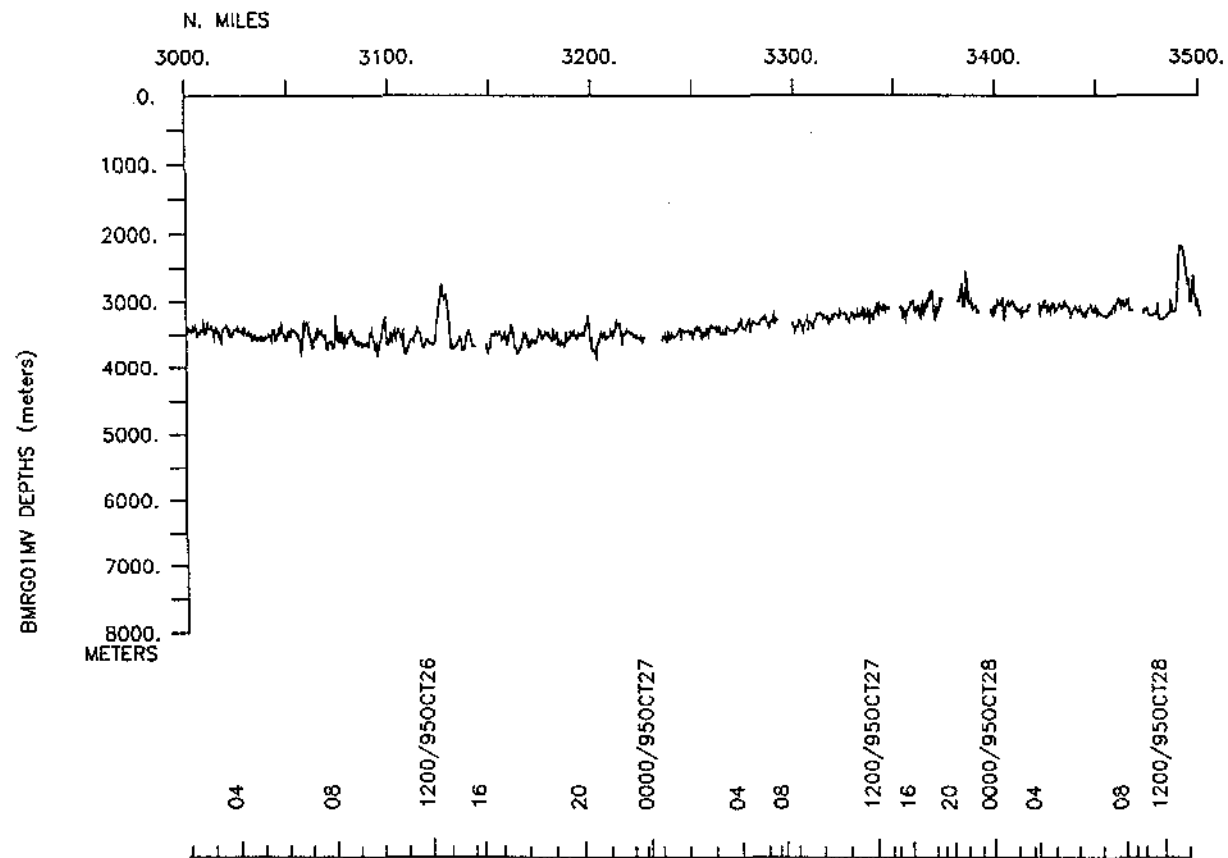
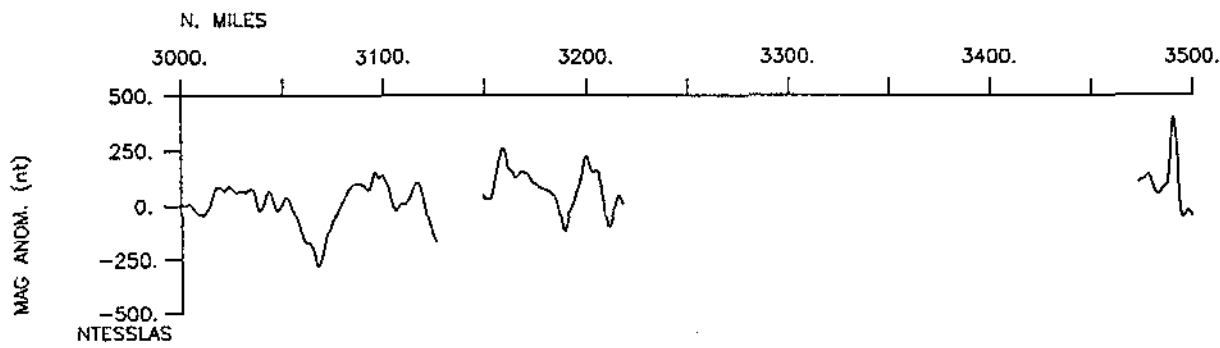
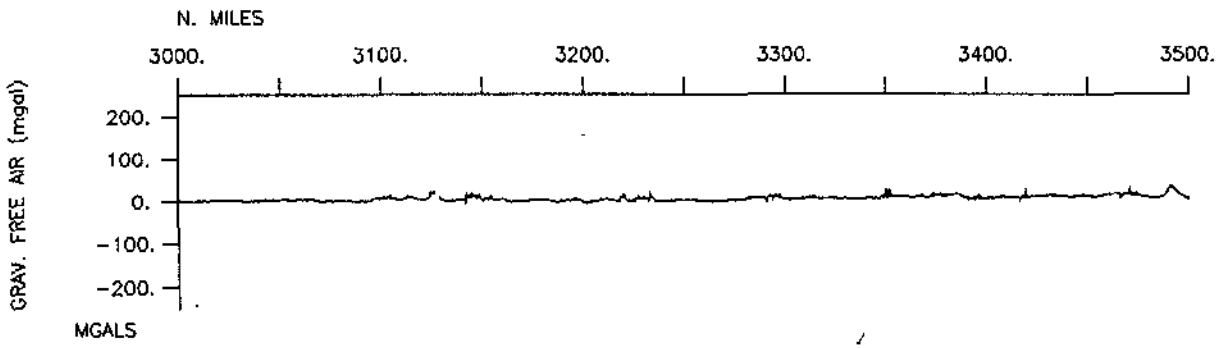


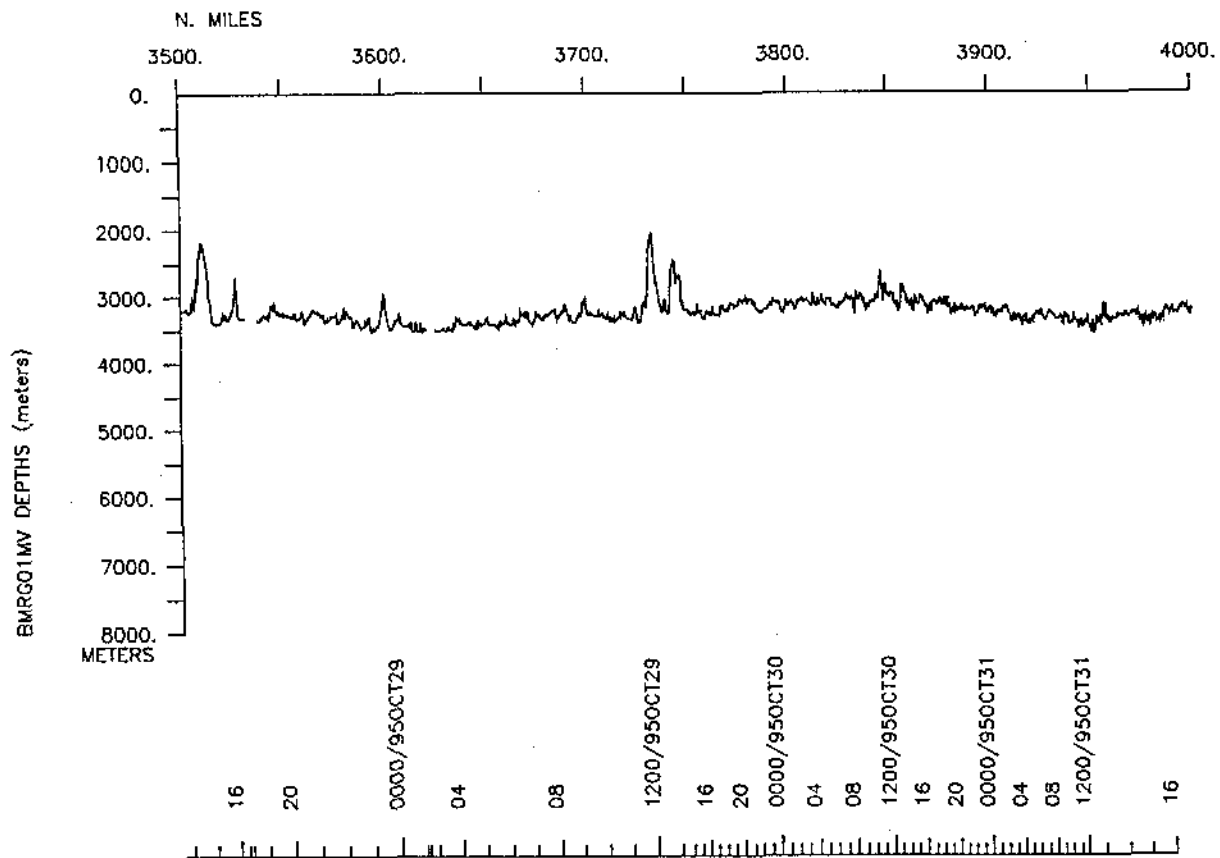
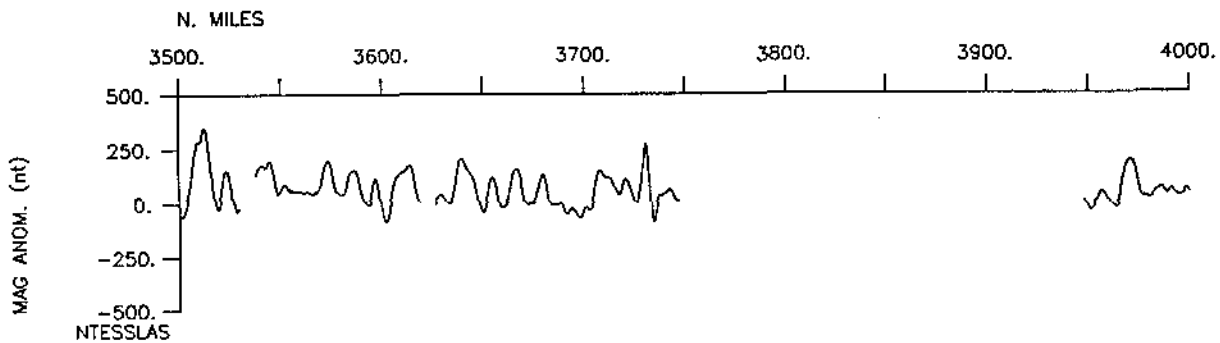
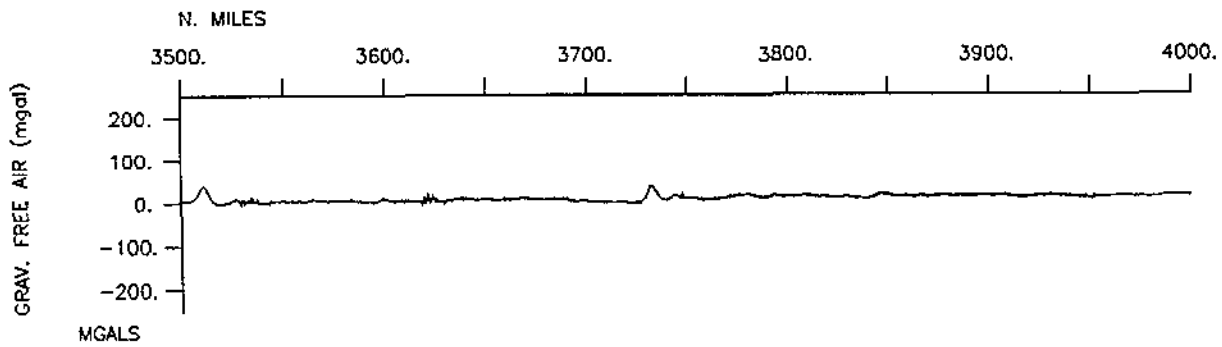


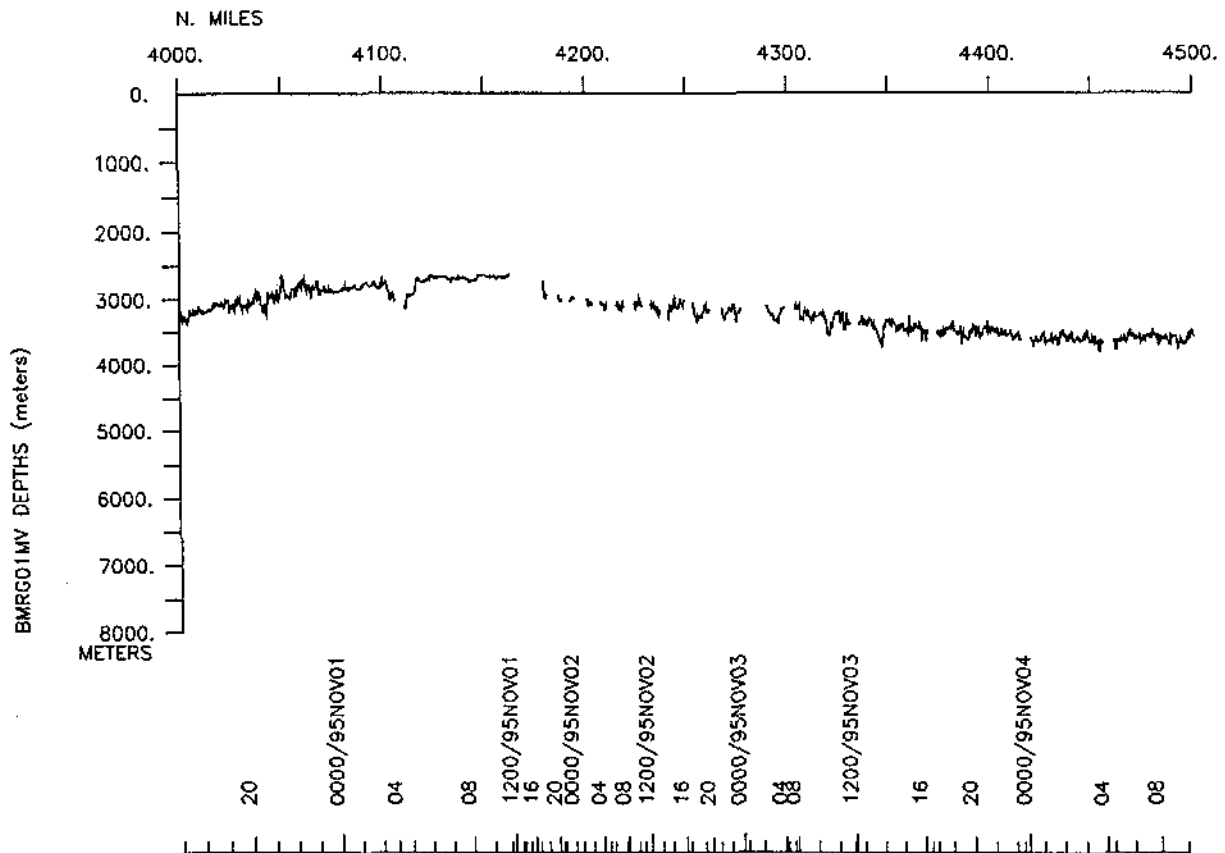
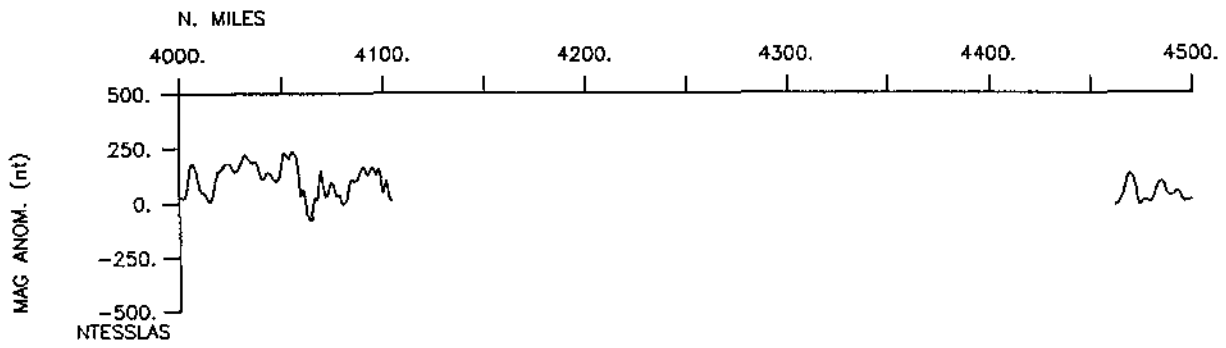
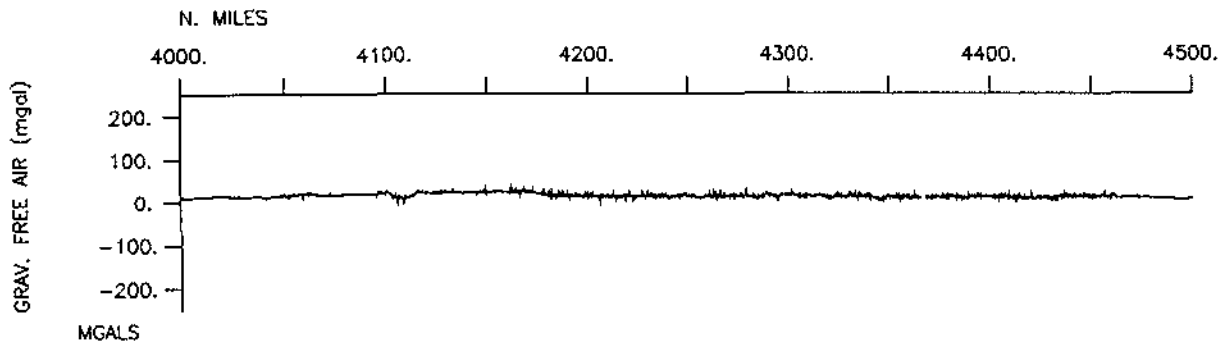


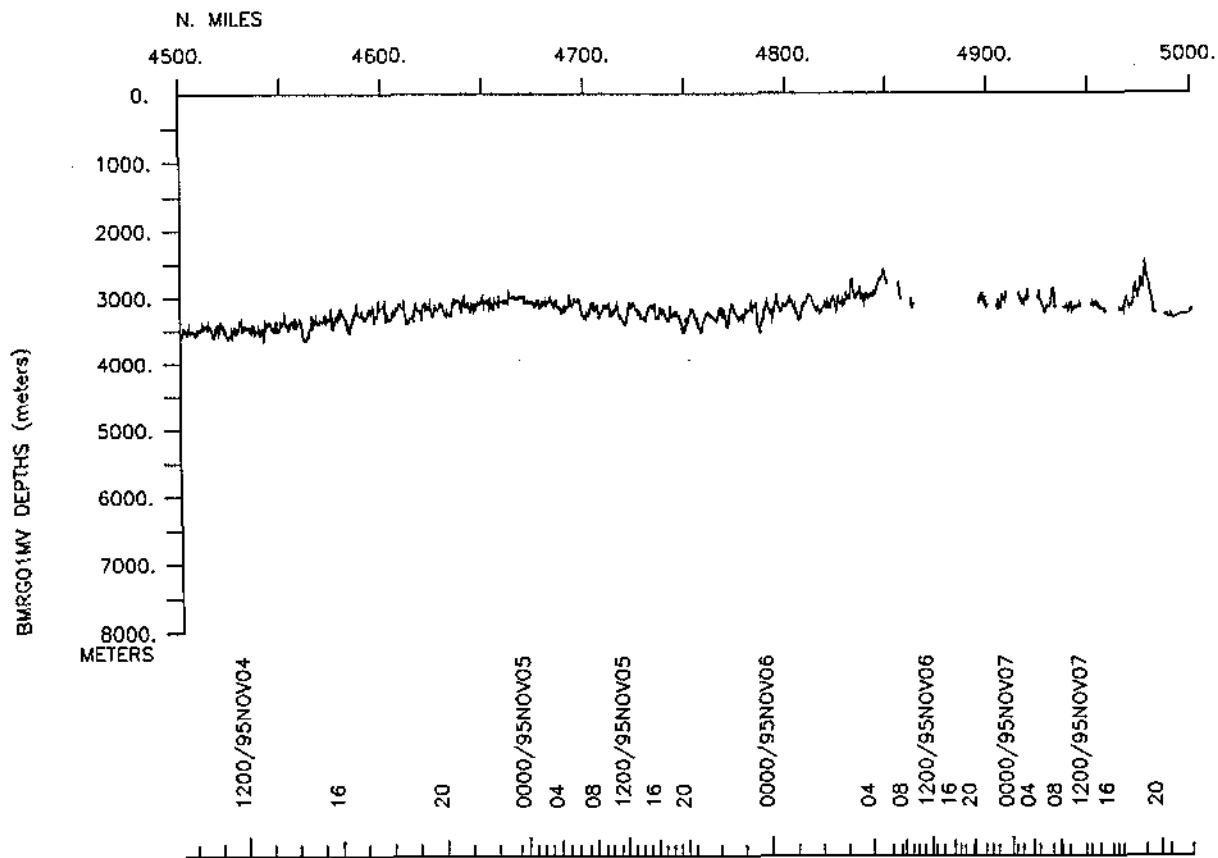
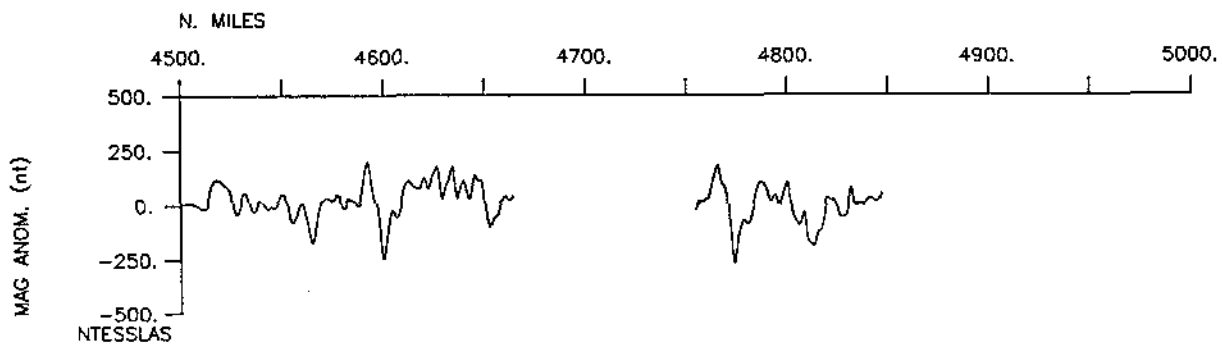
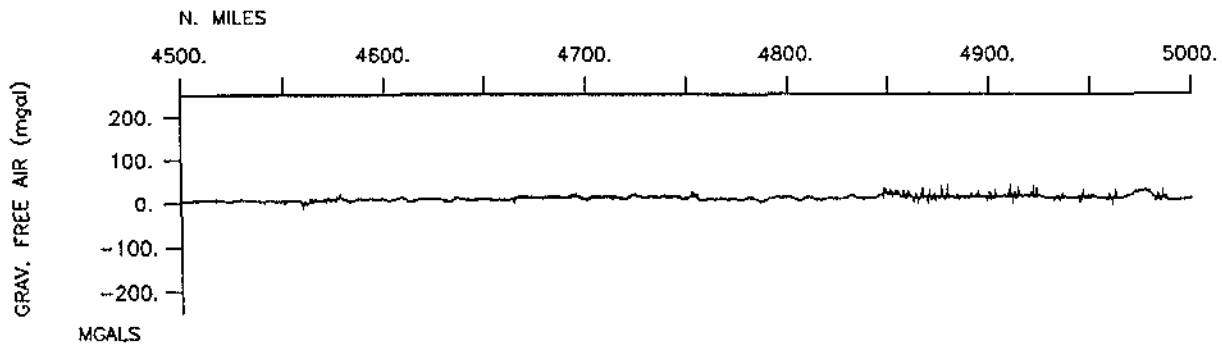


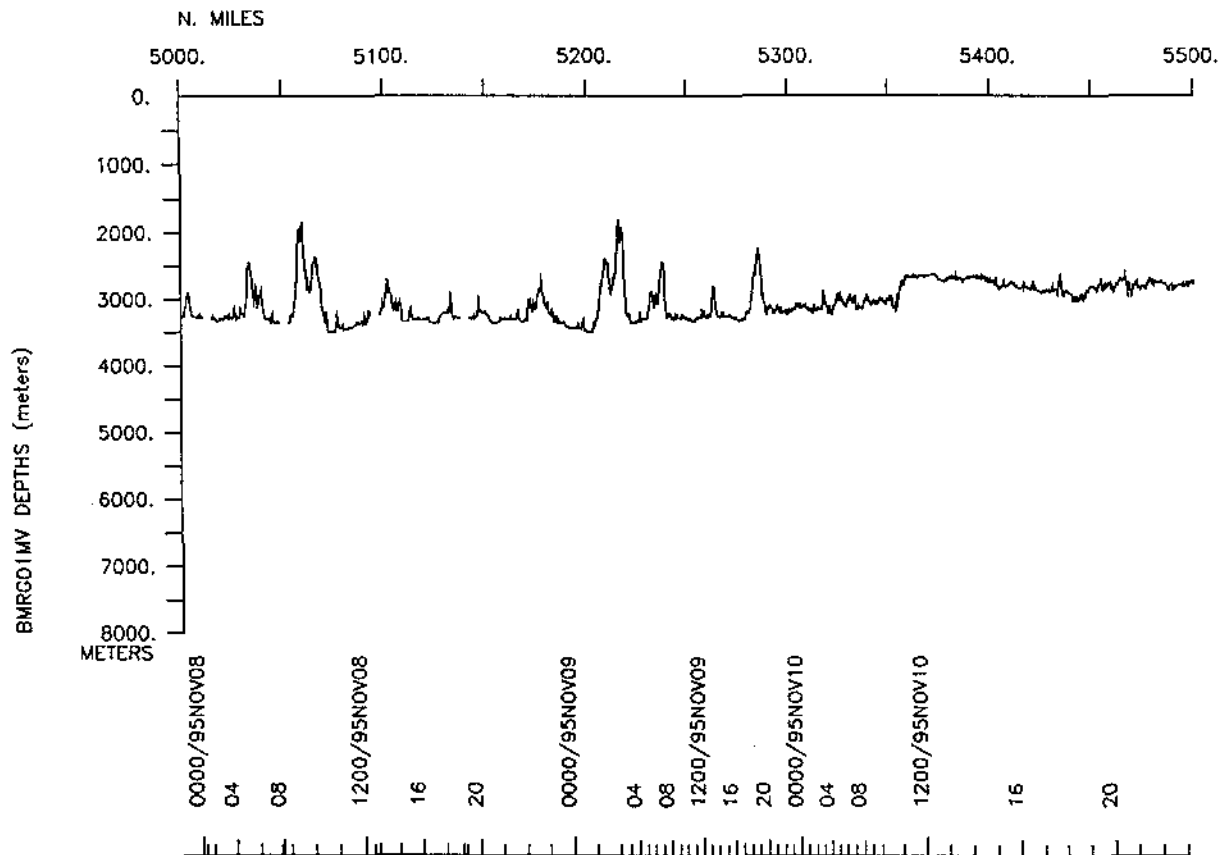
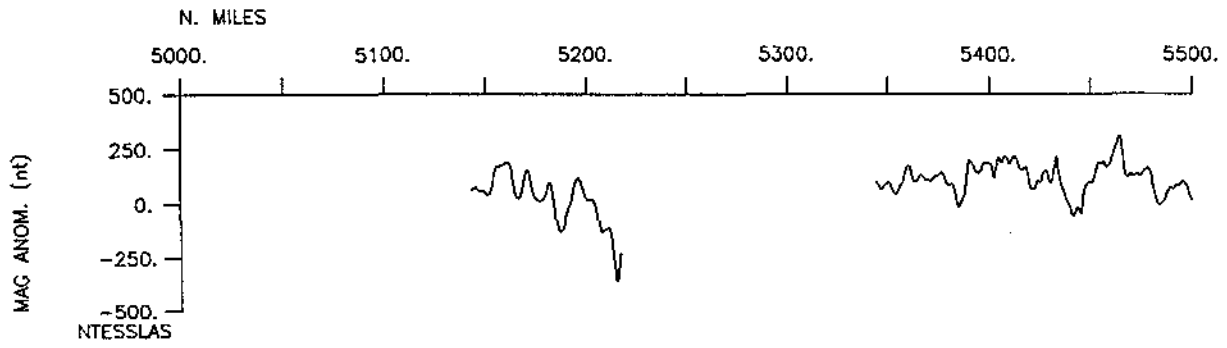
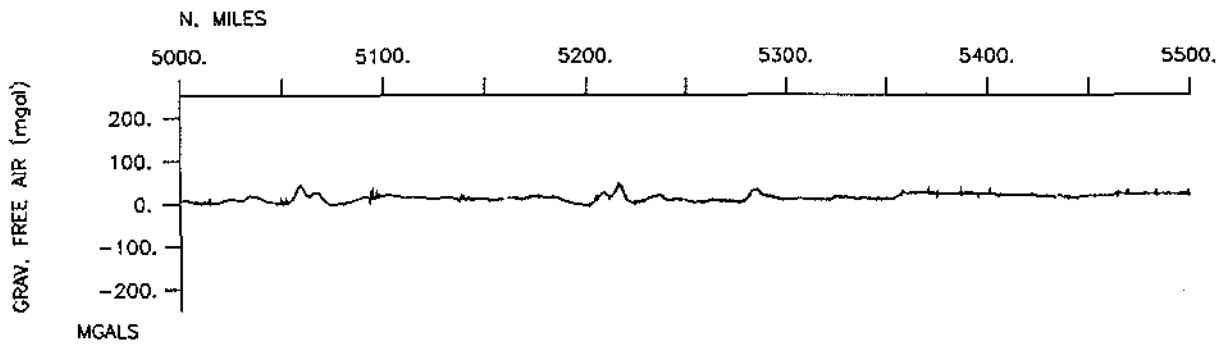


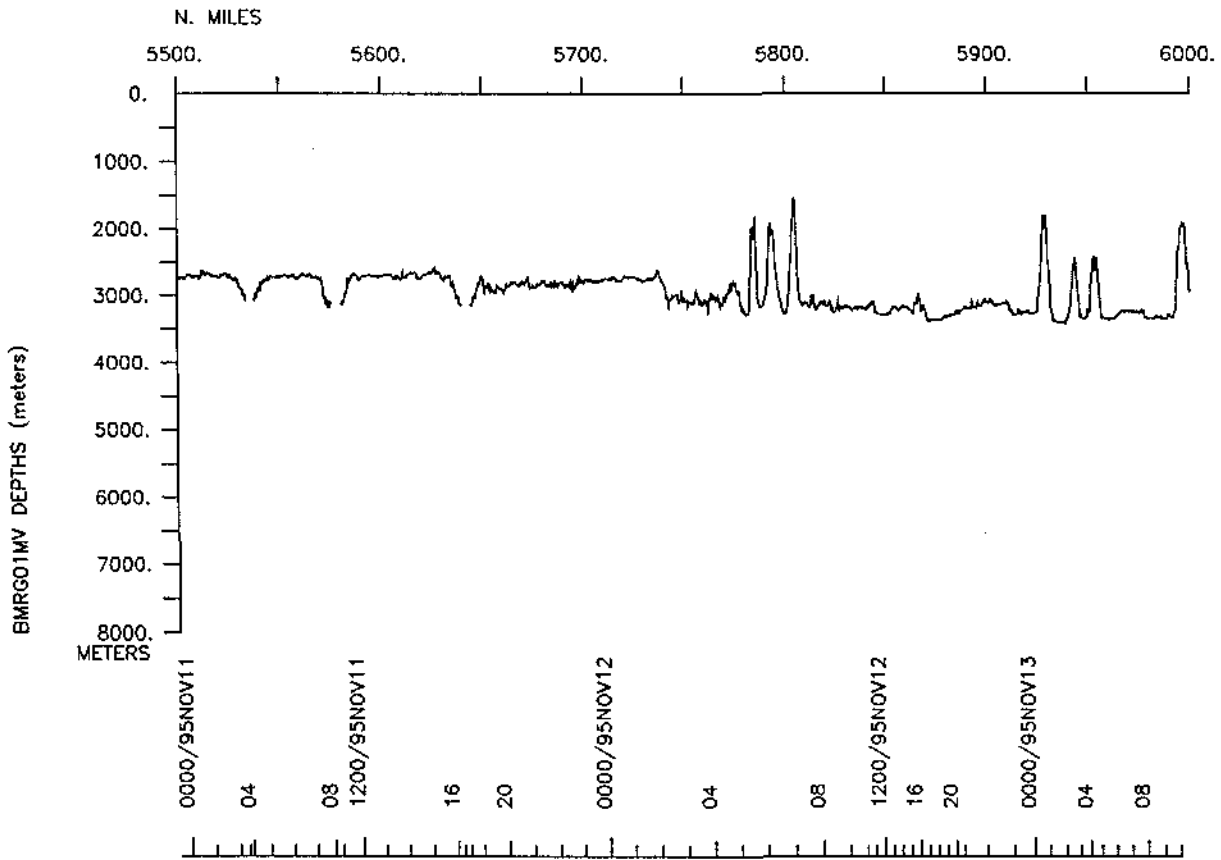
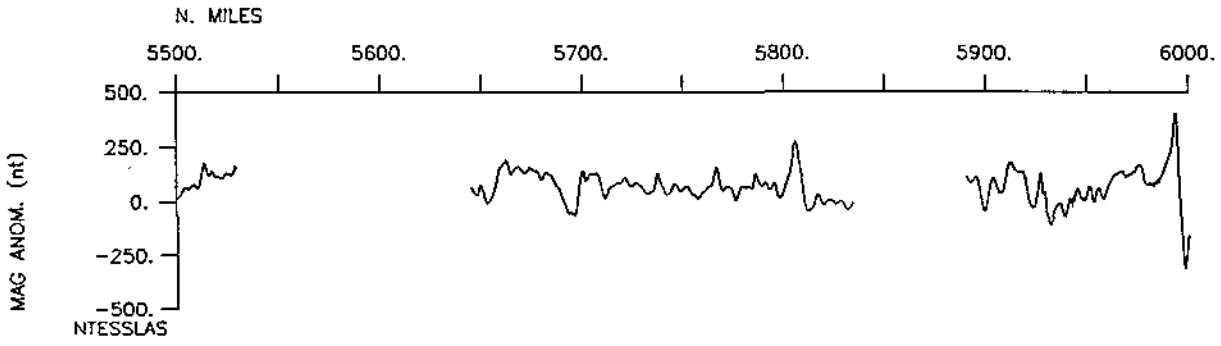
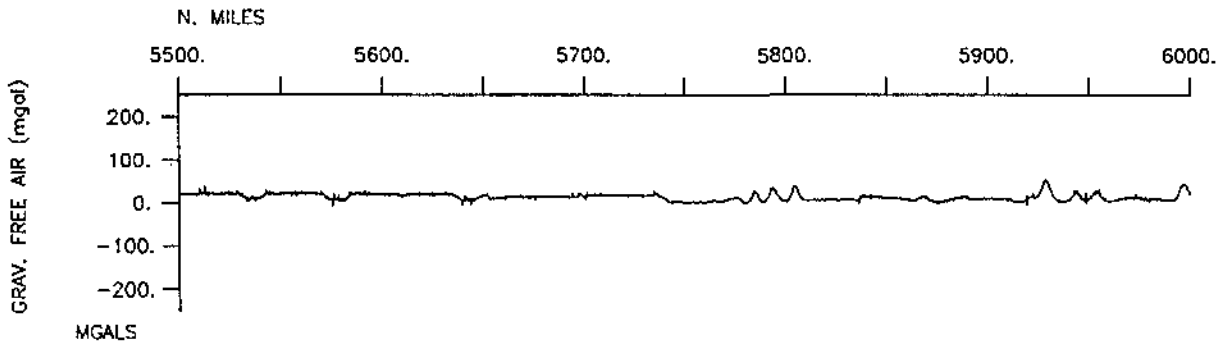


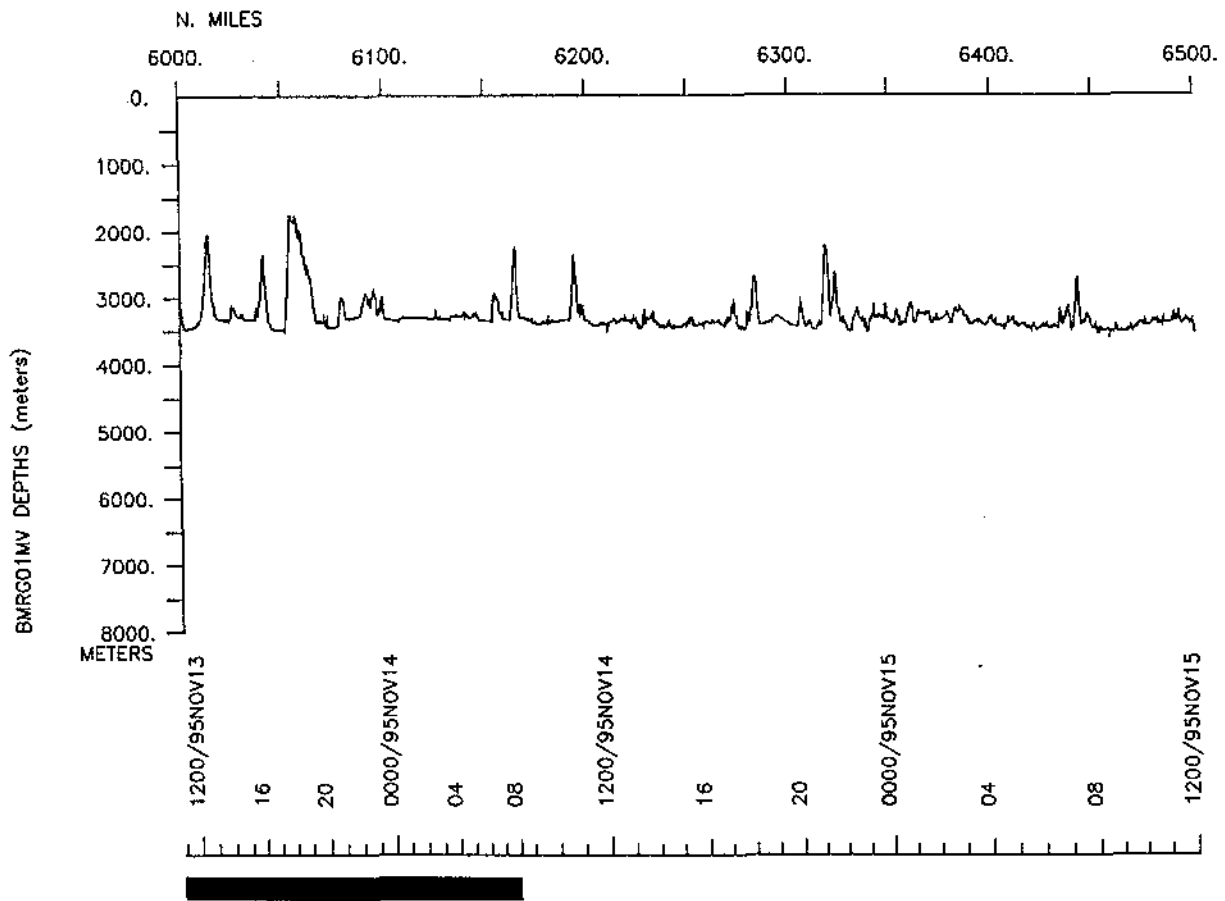
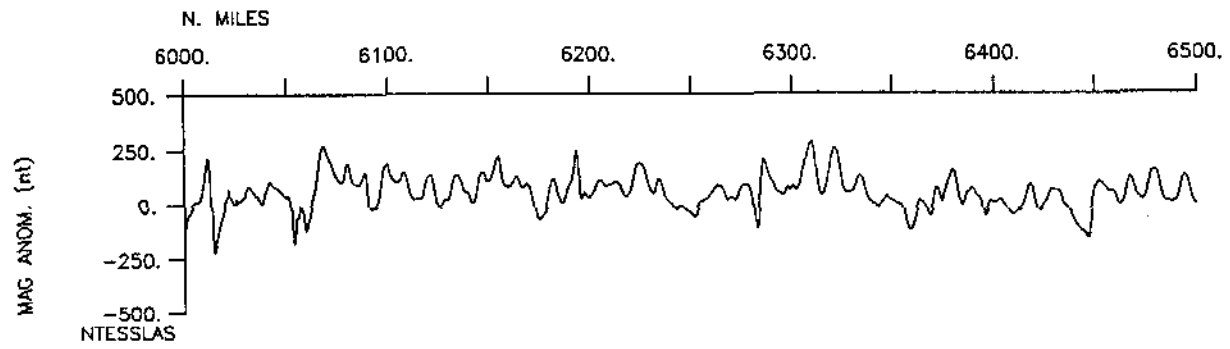
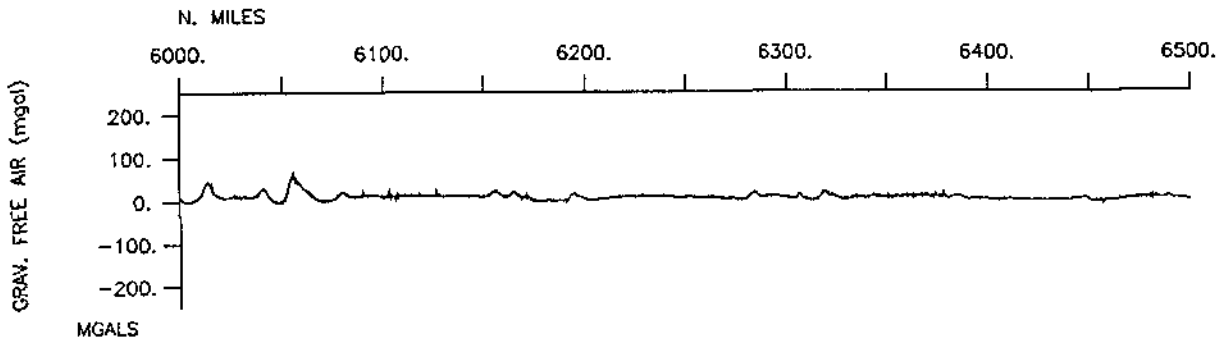


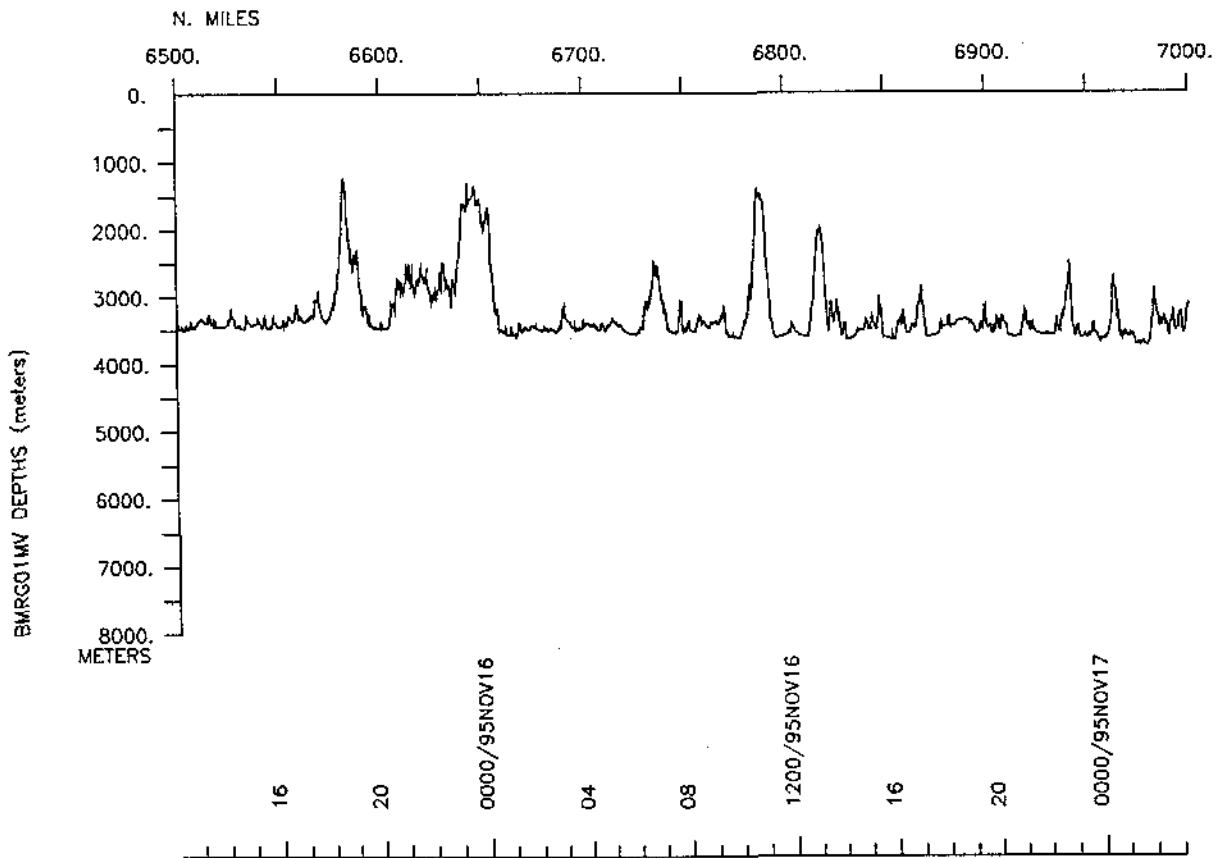
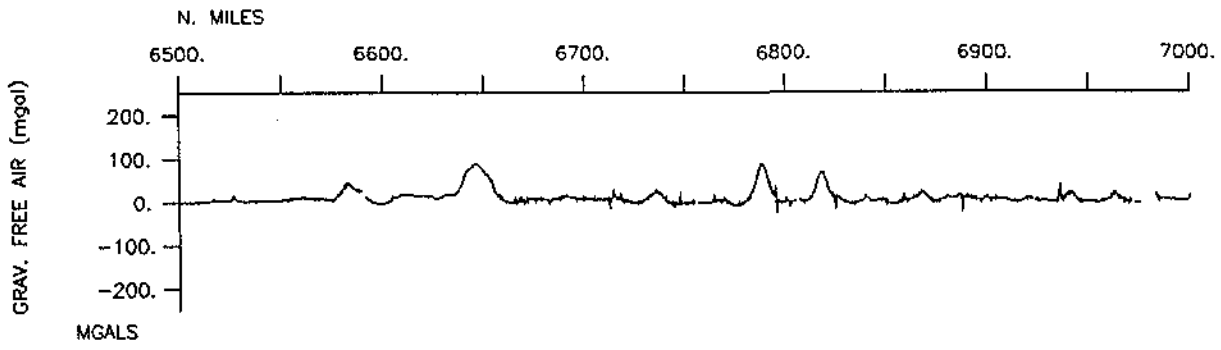


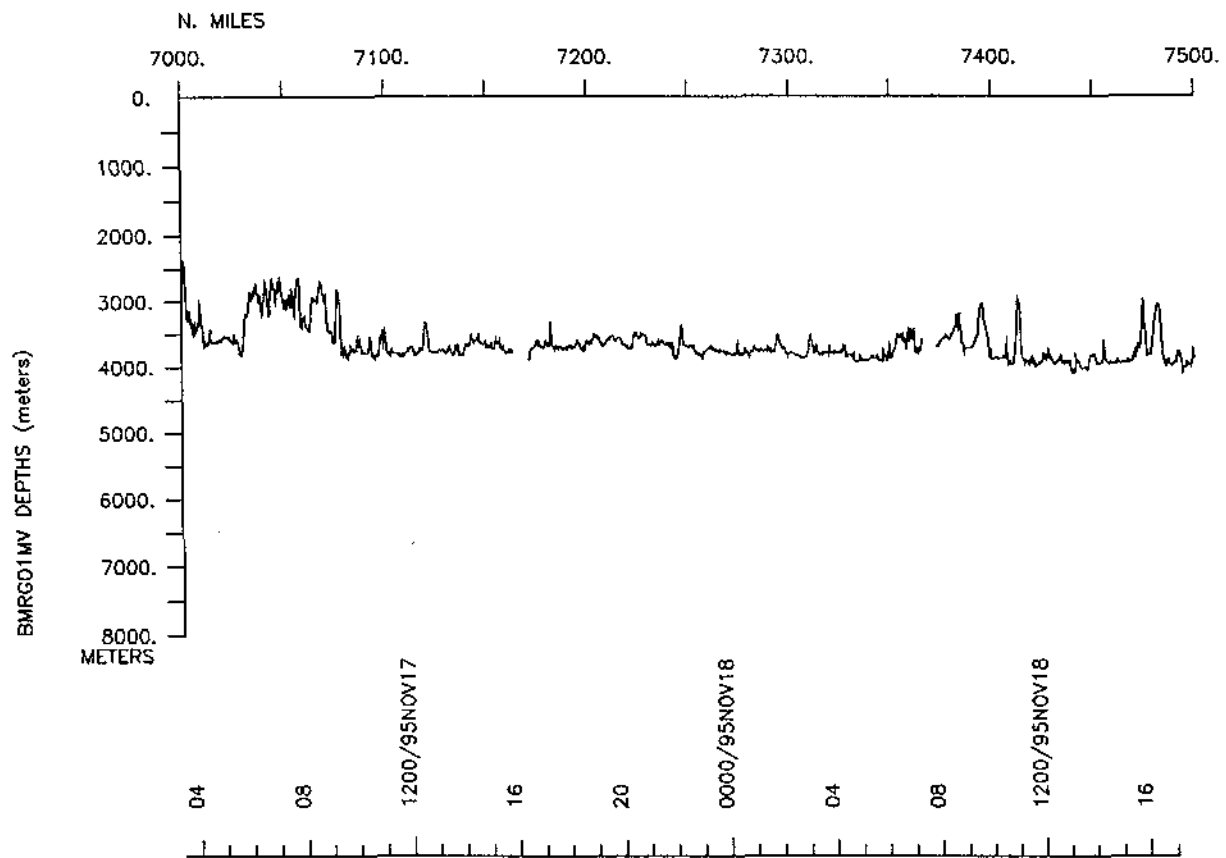
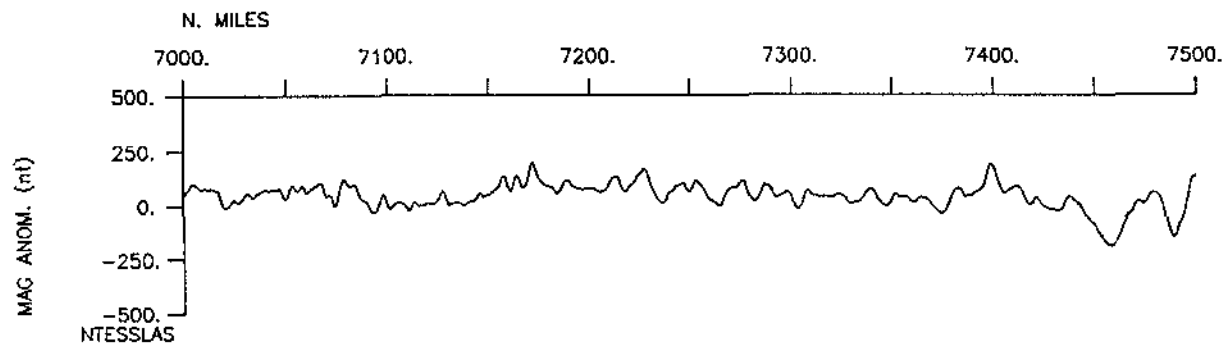
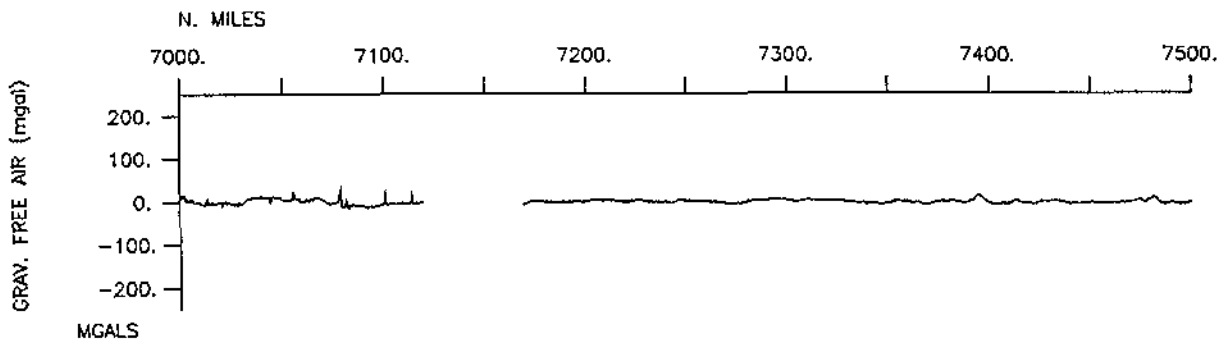


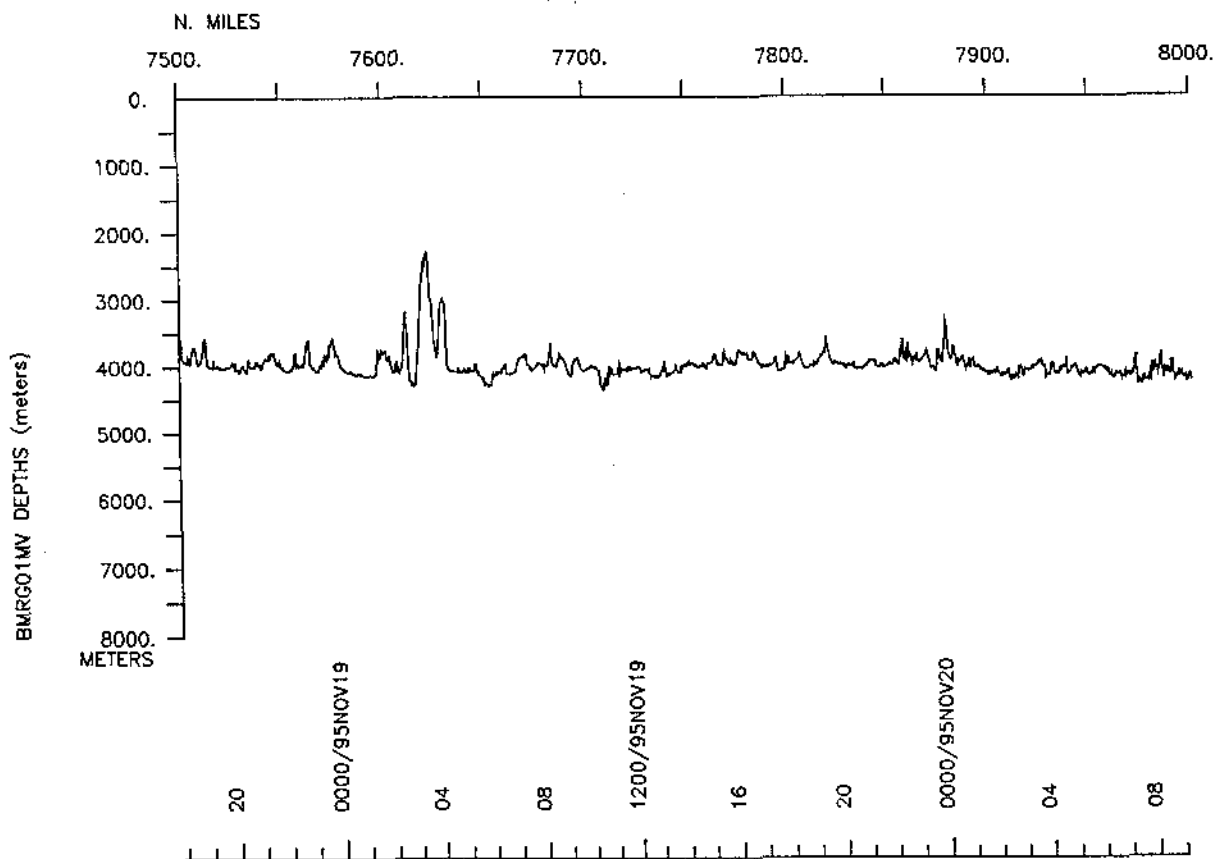
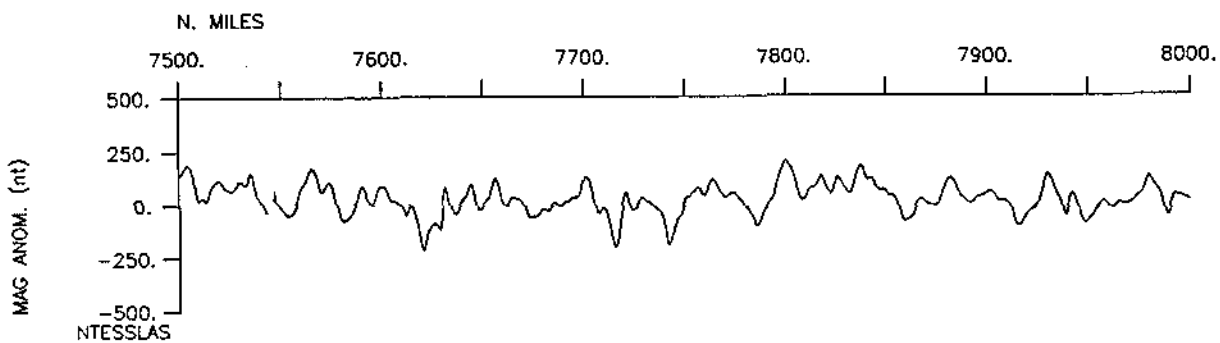
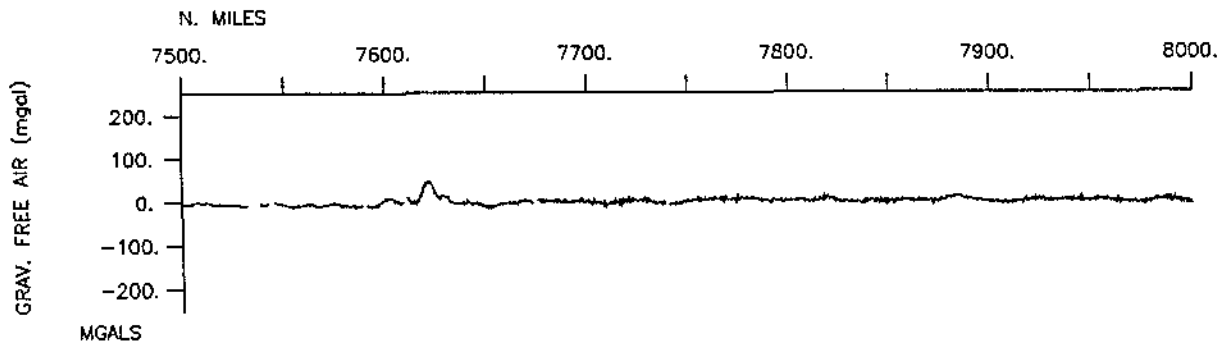


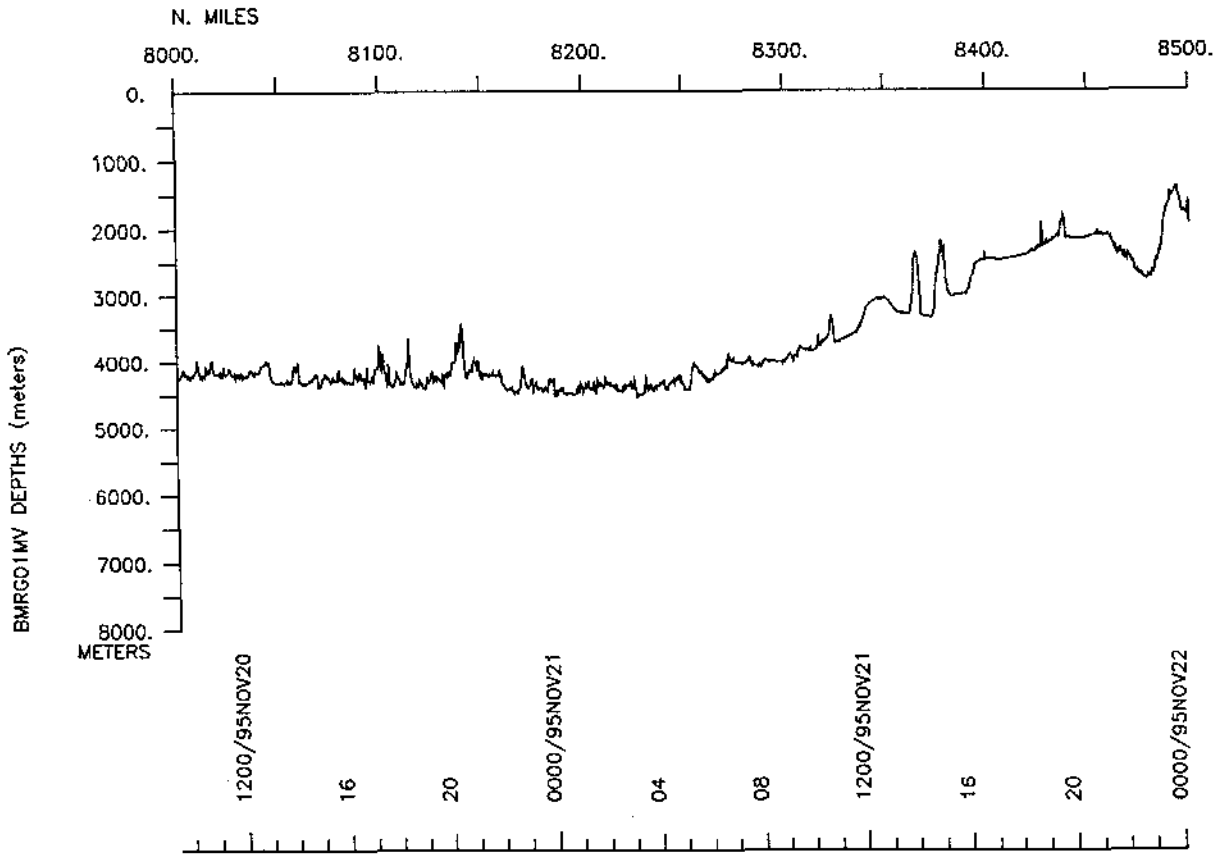
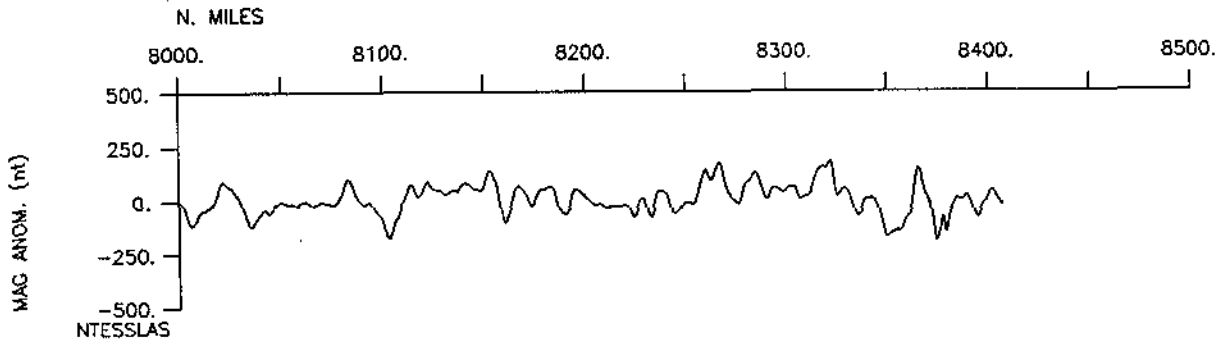
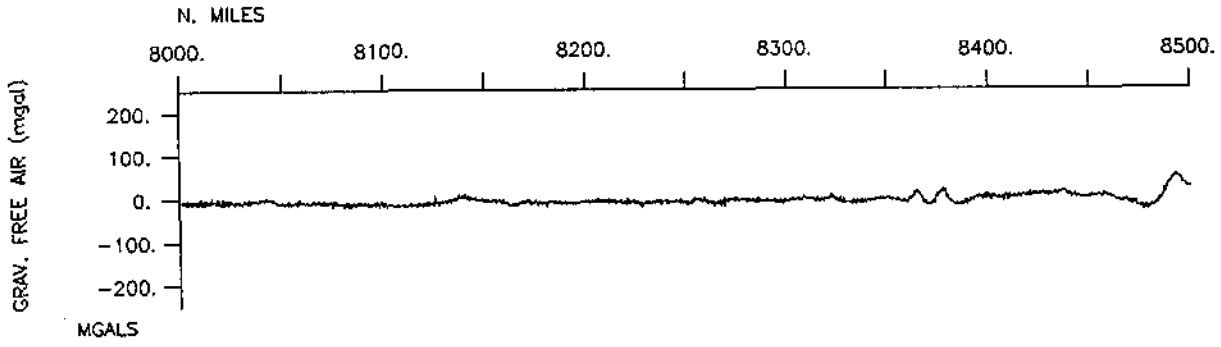


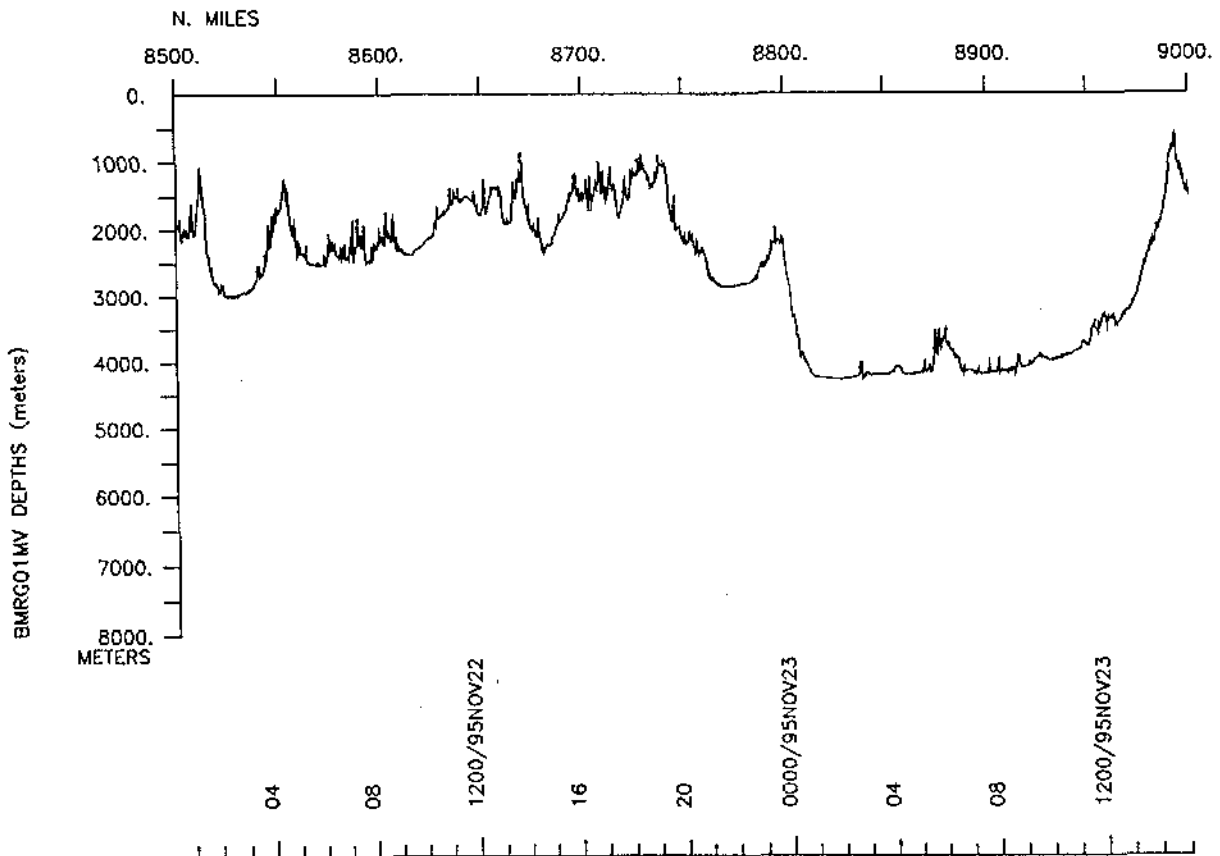
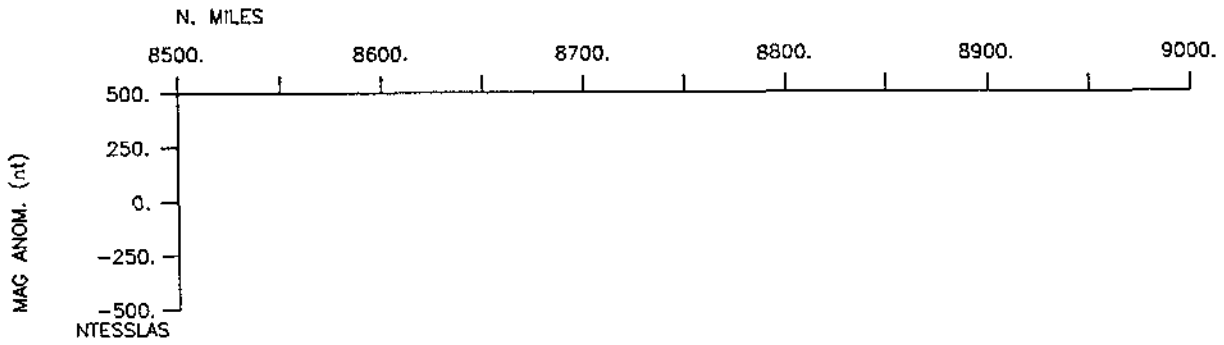
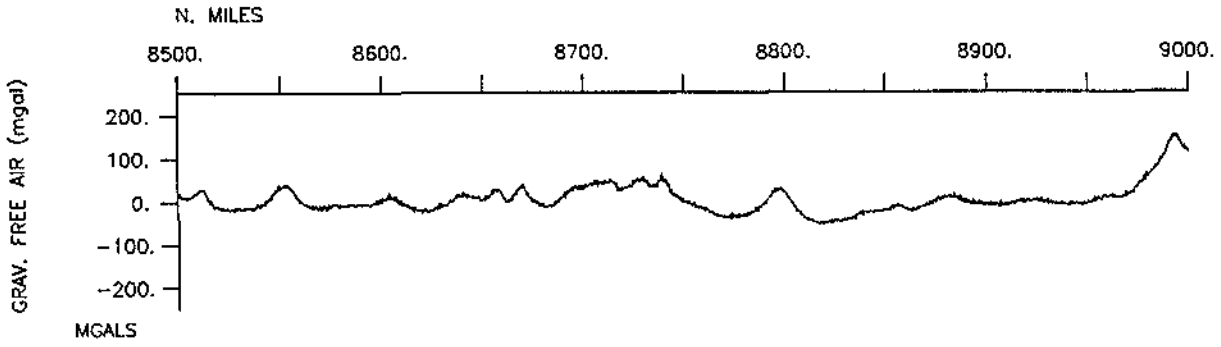


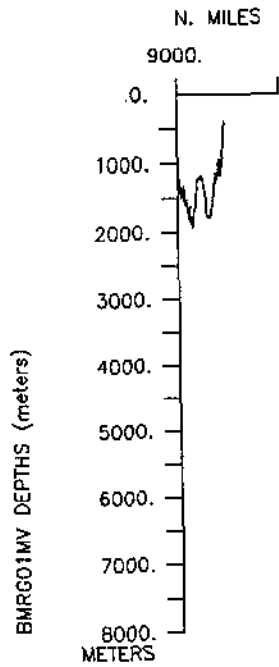
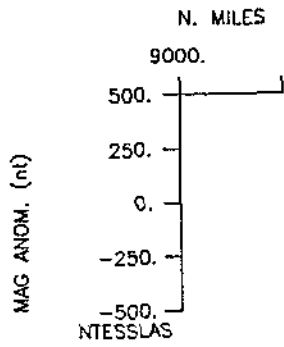
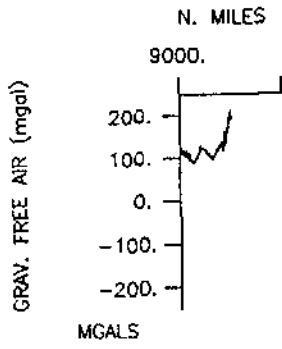












S.I.O. SAMPLE INDEX

(Issued February 1996)

**BOOMERANG EXPEDITION
LEG 1**

**(BMRG01MV)
R/V Melville**

**San Diego, California (15 October 1995)
to
Papeete, Tahiti (23 November 1995)**

Chief Scientist: John Orcutt

(Scripps Institution of Oceanography)

The Sample Index is a first level interdisciplinary listing of time, position, sample identification and disposition of all samples, records and measurements collected on this cruise leg. The index data are encoded at sea by the resident marine technician and processed on shore by the S.I.O. Geological Data Center shortly after the completion of the cruise leg.

Positions are interpolated on the basis of sample time by comparison to a single, edited navigation file. Samples beginning at one time and position and ending at another are entered on two consecutive lines. Disposition and sample type are represented by three and four character codes to permit future computer searches on these parameters. (Listings defining these codes are available from the Geological Data Center.)

GDC Cruise I.D.# 267

**** Ports ****

2300 151095 0 LGPT B San Diego, Ca. GDC 32-43.00N 117-11.00W f BMRG01MV
 1800 231195 0 LGPT E Papeete, Tahiti GDC 17-32.00S 149-34.00W f BMRG01MV

**** Personnel ****

*****NAME***** *****TITLE***** *****AFFILIATION***** **CRID**
 #-----

PECS IGPP Orcutt,Dr.J.	Chief Scientist	Scripps Institution	BMRG01MV
PESP SIX Forsyth,Dr.D.	Professor	Brown Univ.	BMRG01MV
PESP GRD Dorman,Dr.L.	Professor	Scripps Institution	BMRG01MV
PESP WHOI Detrick,Dr.R.	Senior Scientist	Woods Hole	BMRG01MV
PESP MPL Webb,Dr.S.	Asst. Researcher	Scripps Institution	BMRG01MV
PESP MPL Sauter,Dr.A.	Specialist	Scripps Institution	BMRG01MV
PESP SIX Scheirer,Dr.D.	Post Doc. Res.	Brown Univ.	BMRG01MV
PESP MPL Wiggins,Dr.S.	Post Grad Res.	Scripps Institution	BMRG01MV
PESP IGPP Bradley,Dr.C.	Post Grad Res.	Scripps Institution	BMRG01MV
PEAT STS Crampton,P.	Air Gun Engineer	Scripps Institution	BMRG01MV
PERT STS Comer,R.L.	Resident Tech.	Scripps Institution	BMRG01MV
PECT STS Porteous,T.	Computer Tech.	Scripps Institution	BMRG01MV
PESP WHOI Wooding,B.	Res. Associate	Woods Hole	BMRG01MV
PESP IGPP Willoughby,D.	Assoc. Dev. Eng.	Scripps Institution	BMRG01MV
PESP WHOI Hallinan,J.	Res. Engineer	Woods Hole	BMRG01MV
PESP IGPP Hollinshead,C.	Assoc. Dev. Eng.	Scripps Institution	BMRG01MV
PESP MPL Johnson,R.	Dev. Technician	Scripps Institution	BMRG01MV
PESP IGPP Zimmer,P.	Dev. Technician	Scripps Institution	BMRG01MV
PESP MPL Escher,S.	Program. Analyst	Scripps Institution	BMRG01MV
PESP WHOI DuBois,D.	Res. Associate	Woods Hole	BMRG01MV
PESP IGPP Docktor,S.	Dev. Technician	Scripps Institution	BMRG01MV
PESP WHOI Bailey,J.	Eng. Assistant	Woods Hole	BMRG01MV
PEST IGPP Bazin,S.	Grad. Student	Scripps Institution	BMRG01MV
PEST IGPP Golden,C.	Grad. Student	Scripps Institution	BMRG01MV

**** NOTES ****

#An 'X' in the (B)egin/(E)nd column following the sample code indicates no
 #sample or data recovered. A 'C' indicates continuation of data collection
 #from before the beginning or after the end of a particular leg, (moored
 #bottom instruments, for example.) The number appearing in the columns
 #between the sample identifier and the disposition code, for many sample
 #entries, is the water depth in corrected meters.

#GMT	DDMMYY	SAMP	B	SAMPLE	DISP				p	CRUISE
#TIME	DATE	TZ	CODE	E IDENTIFIER	CODE	LATITUDE	LONGITUDE		c	LEG-SHIP
#										
#*** Underway data curator - S. M. Smith ext. 42752										
#*** Log books***										
2300	151095	0	LBUW	B Underway watch log	GDC	32-42.17N	117-14.05W	g		BMRG01MV
0400	231195	0	LBUW	E Underway watch log	GDC	17-32.16S	149-34.48W	g		BMRG01MV
2300	151095	0	LBSC	B Scientific Log book	IGPP	32-42.17N	117-14.05W	g		BMRG01MV
0400	231195	0	LBSC	E Scientific log book	IGPP	17-06.56S	147-03.72W	g		BMRG01MV
#*** Sea Beam Records (vertical beam and side scan) ***										
1503	191095	0	MBSR	B v.beam&sidescan r-01	GDC	14-34.15N	115-22.96W	g		BMRG01MV
1808	311095	0	MBSR	E v.beam&sidescan r-01	GDC	15-38.19S	112-19.77W	g		BMRG01MV
1813	311095	0	MBSR	B v.beam&sidescan r-02	GDC	15-38.29S	112-20.78W	g		BMRG01MV
2111	171195	0	MBSR	E v.beam&sidescan r-02	GDC	14-27.74S	122-04.41W	g		BMRG01MV
2116	171195	0	MBSR	B v.beam&sidescan r-03	GDC	14-27.75S	122-05.53W	g		BMRG01MV
1800	231195	0	MBSR	E v.beam&sidescan r-03	GDC	17-32.18S	149-34.49W	g		BMRG01MV
#*** Magnetics (Earth Total Field) Records ***										
0043	251095	0	MGRA	B Magnetics r-01	GDC	11-42.88S	112-53.75W	g		BMRG01MV
0308	141195	0	MGRA	E Magnetics r-01	GDC	17-52.88S	115-56.29W	g		BMRG01MV
0316	141195	0	MGRA	B Magnetics r-02	GDC	17-52.69S	115-57.37W	g		BMRG01MV
2230	161195	0	MGRA	E Magnetics r-02	GDC	14-59.34S	117-42.17W	g		BMRG01MV
#*** Continuous Recorded Gravity ***										
2300	151095	0	GVCR	B Gravity auto record	GDC	32-42.17N	117-14.05W	g		BMRG01MV
1800	231195	0	GVCR	E Gravity auto record	GDC	17-32.18S	149-34.49W	g		BMRG01MV

#GMT	DDMMYY	TZ	SAMP	B	SAMPLE	DISP	LATITUDE	LONGITUDE	p	CRUISE
#TIME	DATE		CODE	E	IDENTIFIER	CODE			c	LEG-SHIP
#*** Seismic Reflection ***										
1407	291095	0	SPRS	B	6 AG OBS 100 sec.	IGPP	16-00.08S	114-34.98W	g	BMRG01MV
1130	311095	0	SPRS	E	end survey line	IGPP	15-34.51S	111-16.84W	g	BMRG01MV
2330	041195	0	SPRS	B	6 AG OBS 100 sec.	IGPP	17-15.07S	112-59.31W	g	BMRG01MV
2025	051195	0	SPRS	E	end survey line	IGPP	17-04.76S	111-33.94W	g	BMRG01MV
1007	121195	0	SPRS	B	6 AG OBS 100 sec.	IGPP	17-05.87S	114-54.26W	g	BMRG01MV
2026	121195	0	SPRS	E	end survey line	IGPP	17-50.84S	115-00.68W	g	BMRG01MV
0000	131195	0	SPSV	B	1 WG Strm.	IGPP	17-57.57S	115-38.35W	g	BMRG01MV
0824	141195	0	SPSV	E	end survey line	IGPP	17-29.78S	116-11.92W	g	BMRG01MV
#*** Ocean Bottom Seismometer ***										
#*** SIX=LeRoy Dorman, SIO ***										
1411	261095	0	SBOB	B	OBS 1 WHOI 58 3674M	WHOI	15-15.58S	109-23.45W	g	BMRG01MV
1800	211195	0	SBOB	C	OBS 1 WHOI 58 3674M	WHOI	15-15.58S	109-23.45W	g	BMRG01MV
2237	261095	0	SBOB	B	OBS 2 3550M	SIO	15-29.34S	110-39.30W	g	BMRG01MV
1800	241195	0	SBOB	C	OBS 2 3550M	SIO	15-29.34S	110-39.30W	g	BMRG01MV
0542	271095	0	SBOB	B	OBS 3 Eleanor 3264M	MPL	15-38.38S	111-38.66W	g	BMRG01MV
1800	241195	0	SBOB	C	OBS 3 Eleanor 3264M	MPL	15-38.38S	111-38.66W	g	BMRG01MV
1247	271095	0	SBOB	B	OBS 4 Judy 3085M	IGPP	15-44.40S	112-30.42W	g	BMRG01MV
1800	241195	0	SBOB	C	OBS 4 Judy 3085M	IGPP	15-44.40S	112-30.42W	g	BMRG01MV
1731	271095	0	SBOB	B	OBS 5 Frank 2978M	MPL	15-49.30S	112-52.01W	g	BMRG01MV
1800	241195	0	SBOB	C	OBS 5 Frank 2978M	MPL	15-49.30S	112-52.01W	g	BMRG01MV
2149	271095	0	SBOB	B	OBS 6 Sharon 3143M	IGPP	15-50.82S	113-04.20W	g	BMRG01MV
1800	241195	0	SBOB	C	OBS 6 Sharon 3143M	IGPP	15-50.82S	113-04.20W	g	BMRG01MV
0149	281095	0	SBOB	B	OBS 7 Abe 3045M	MPL	15-54.42S	113-24.21W	g	BMRG01MV
1800	241195	0	SBOB	C	OBS 7 Abe 3045M	MPL	15-54.42S	113-24.21W	g	BMRG01MV
0831	281095	0	SBOB	B	OBS 8 Helmut 3139M	MPL	16-00.40S	114-11.99W	g	BMRG01MV
1800	241195	0	SBOB	C	OBS 8 Helmut 3139M	MPL	16-00.40S	114-11.99W	g	BMRG01MV
1640	281095	0	SBOB	B	OBS 9 MPL03 3320M	MPL	16-09.40S	115-13.61W	g	BMRG01MV
1800	241195	0	SBOB	C	OBS 9 MPL03 3320M	MPL	16-09.40S	115-13.61W	g	BMRG01MV

#GMT	DDMMYY	SAMP	B	SAMPLE	DISP		p	CRUISE
#TIME	DATE	TZ	CODE	E IDENTIFIER	CODE	LATITUDE	LONGITUDE	c LEG-SHIP
#								
0121	291095	0	SBOB	B OBS 10	WHOI63	3495M	WHOI 16-20.67S	116-40.89W g BMRG01MV
1800	241195	0	SBOB	C OBS 10	WHOI63	3495M	WHOI 16-20.67S	116-40.89W g BMRG01MV
0313	011195	0	SBOB	B OBS 11	WHOI54	3127M	WHOI 16-34.42S	113-08.51W g BMRG01MV
1800	241195	0	SBOB	C OBS 11	WHOI54	3127M	WHOI 16-34.42S	113-08.51W g BMRG01MV
1004	011195	0	SBOB	B OBS 12	Satote	2640M	MPL 17-16.70S	113-10.30W g BMRG01MV
1800	241195	0	SBOB	C OBS 12	Satote	2640M	MPL 17-16.70S	113-10.30W g BMRG01MV
1314	011195	0	SBOB	B OBS 13	Frm 11	2725M	SIO 17-16.41S	113-08.19W g BMRG01MV
1800	241195	0	SBOB	C OBS 13	Frm 11	2725M	SIO 17-16.41S	113-08.19W g BMRG01MV
1602	011195	0	SBOB	B OBS 14	WHOI56	2785M	WHOI 17-16.26S	113-06.79W g BMRG01MV
1800	241195	0	SBOB	C OBS 14	WHOI56	2785M	WHOI 17-16.26S	113-06.79W g BMRG01MV
1813	011195	0	SBOB	B OBS 15	Frm 10	2941M	SIO 17-15.80S	113-03.90W g BMRG01MV
1800	241195	0	SBOB	C OBS 15	Frm 10	2941M	SIO 17-15.80S	113-03.90W g BMRG01MV
2050	011195	0	SBOB	B OBS 16	Frm 62	3010M	WHOI 17-15.49S	113-01.51W g BMRG01MV
1800	241195	0	SBOB	C OBS 16	Frm 62	3010M	WHOI 17-15.49S	113-01.51W g BMRG01MV
2322	011195	0	SBOB	B OBS 17	Frm 14	3003M	SIO 17-15.09S	112-59.21W g BMRG01MV
1800	241195	0	SBOB	C OBS 17	Frm 14	3003M	SIO 17-15.09S	112-59.21W g BMRG01MV
0212	021195	0	SBOB	B OBS 18	Frm 51	3065M	WHOI 17-14.52S	112-55.52W g BMRG01MV
1800	241195	0	SBOB	C OBS 18	Frm 51	3065M	WHOI 17-14.52S	112-55.52W g BMRG01MV
0428	021195	0	SBOB	B OBS 19	Frm 6	3092M	SIO 17-14.21S	112-51.76W g BMRG01MV
1800	241195	0	SBOB	C OBS 19	Frm 6	3092M	SIO 17-14.21S	112-51.76W g BMRG01MV
0701	021195	0	SBOB	B OBS 20	WHOI 53	3135M	WHOI 17-13.59S	112-47.82W g BMRG01MV
1800	241195	0	SBOB	C OBS 20	WHOI 53	3135M	WHOI 17-13.59S	112-47.82W g BMRG01MV
0926	021195	0	SBOB	B OBS 21	Nancy	3085M	MPL 17-12.70S	112-43.30W g BMRG01MV
1800	241195	0	SBOB	C OBS 21	Nancy	3085M	MPL 17-12.70S	112-43.30W g BMRG01MV
1259	021195	0	SBOB	B OBS 22	Fred	3215M	IGPP 17-11.67S	112-38.23W g BMRG01MV
1800	241195	0	SBOB	C OBS 22	Fred	3215M	IGPP 17-11.67S	112-38.23W g BMRG01MV
1552	021195	0	SBOB	B OBS 23	Sid	3020M	MPL 17-10.28S	112-30.14W g BMRG01MV
1800	241195	0	SBOB	C OBS 23	Sid	3020M	MPL 17-10.28S	112-30.14W g BMRG01MV
1935	021195	0	SBOB	B OBS 24	Indira	3185M	MPL 17-09.68S	112-21.19W g BMRG01MV
1800	241195	0	SBOB	C OBS 24	Indira	3185M	MPL 17-09.68S	112-21.19W g BMRG01MV

#GMT	DDMMYY	SAMP	B	SAMPLE	DISP				p	CRUISE
#TIME	DATE	FZ	CODE	E IDENTIFIER	CODE	LATITUDE	LONGITUDE		c	LEG-SHIP
#										
2344	021195	0	SBOB	B OBS 25 Janice	3137M IGPP	17-09.58S	112-10.80W	g		BMRG01MV
1800	241195	0	SBOB	C OBS 25 Janice	3137M IGPP	17-09.58S	112-10.80W	g		BMRG01MV
0413	031195	0	SBOB	B OBS 26 Hillary	3156M MPL	17-07.29S	111-53.15W	g		BMRG01MV
1800	241195	0	SBOB	C OBS 26 Hillary	3156M MPL	17-07.29S	111-53.15W	g		BMRG01MV
1052	031195	0	SBOB	B OBS 27 Frm 4	3392M SIO	17-01.28S	111-25.19W	g		BMRG01MV
1800	241195	0	SBOB	C OBS 27 Frm 4	3392M SIO	17-01.28S	111-25.19W	g		BMRG01MV
1631	031195	0	SBOB	B OBS 28 Frm 61	3525M WHOI	16-56.50S	110-49.62W	g		BMRG01MV
1800	241195	0	SBOB	C OBS 28 Frm 61	3525M WHOI	16-56.50S	110-49.62W	g		BMRG01MV
2230	031195	0	SBOB	B OBS 29 Frm 9	3630M SIO	16-48.10S	110-07.41W	g		BMRG01MV
1800	241195	0	SBOB	C OBS 29 Frm 9	3630M SIO	16-48.10S	110-07.41W	g		BMRG01MV
0413	041195	0	SBOB	B OBS 30 Frm 57	3660M WHOI	16-43.30S	109-29.61W	g		BMRG01MV
1800	241195	0	SBOB	C OBS 30 Frm 57	3660M WHOI	16-43.30S	109-29.61W	g		BMRG01MV
0507	061195	0	SBOB	B OBS 31 Lynn	2732M IGPP	17-16.99S	113-12.52W	g		BMRG01MV
1800	241195	0	SBOB	C OBS 31 Lynn	2732M IGPP	17-16.99S	113-12.52W	g		BMRG01MV
0727	061195	0	SBOB	B OBS 32 Frm 5	3055M SIO	17-16.89S	113-14.79W	g		BMRG01MV
1800	241195	0	SBOB	C OBS 32 Frm 5	3055M SIO	17-16.89S	113-14.79W	g		BMRG01MV
0946	061195	0	SBOB	B OBS 33 Frm 52	3088M WHOI	17-17.48S	113-16.90W	g		BMRG01MV
1800	241195	0	SBOB	C OBS 33 Frm 52	3088M WHOI	17-17.48S	113-16.90W	g		BMRG01MV
1150	061195	0	SBOB	B OBS 34 Frm 15	3012M SIO	17-17.87S	113-19.59W	g		BMRG01MV
1800	241195	0	SBOB	C OBS 34 Frm 15	3012M SIO	17-17.87S	113-19.59W	g		BMRG01MV
1410	061195	0	SBOB	B OBS 35 Frm 59	3060M WHOI	17-18.19S	113-21.80W	g		BMRG01MV
1800	241195	0	SBOB	C OBS 35 Frm 59	3060M WHOI	17-18.19S	113-21.80W	g		BMRG01MV
1637	061195	0	SBOB	B OBS 36 Frm 12	3115M SIO	17-18.48S	113-25.34W	g		BMRG01MV
1800	241195	0	SBOB	C OBS 36 Frm 12	3115M SIO	17-18.48S	113-25.34W	g		BMRG01MV
1908	061195	0	SBOB	B OBS 37 Frm 50	3090M WHOI	17-18.79S	113-28.61W	g		BMRG01MV
1800	241195	0	SBOB	C OBS 37 Frm 50	3090M WHOI	17-18.79S	113-28.61W	g		BMRG01MV
2130	061195	0	SBOB	B OBS 38 Frm 7	3155M SIO	17-19.60S	113-33.72W	g		BMRG01MV
1800	241195	0	SBOB	C OBS 38 Frm 7	3155M SIO	17-19.60S	113-33.72W	g		BMRG01MV
0004	071195	0	SBOB	B OBS 39 George	2945M MPL	17-20.51S	113-39.53W	g		BMRG01MV
1800	241195	0	SBOB	C OBS 39 George	2945M MPL	17-20.51S	113-39.53W	g		BMRG01MV

#GMT	DDMMYY	SAMP	B	SAMPLE	DISP				p	CRUISE
#TIME	DATE	TZ	CODE	E IDENTIFIER	CODE	LATITUDE	LONGITUDE		c	LEG-SHIP
#										
0345	071195	0	SBOB	B OBS 40 Ron	2995M MPL	17-20.91S	113-45.23W	g		BMRG01MV
1800	241195	0	SBOB	C OBS 40 Ron	2995M MPL	17-20.91S	113-45.23W	g		BMRG01MV
0736	071195	0	SBOB	B OBS 41 Cold Dk	3150M IGPP	17-22.30S	113-54.50W	g		BMRG01MV
1800	241195	0	SBOB	C OBS 41 Cold Dk	3150M IGPP	17-22.30S	113-54.50W	g		BMRG01MV
1055	071195	0	SBOB	B OBS 42 Slick	3120M MPL	17-23.51S	114-03.51W	g		BMRG01MV
1800	241195	0	SBOB	C OBS 42 Slick	3120M MPL	17-23.51S	114-03.51W	g		BMRG01MV
1439	071195	0	SBOB	B OBS 43 Evita	3175M MPL	17-24.68S	114-12.50W	g		BMRG01MV
1800	241195	0	SBOB	C OBS 43 Evita	3175M MPL	17-24.68S	114-12.50W	g		BMRG01MV
1954	071195	0	SBOB	B OBS 44 Karen	3260M IGPP	17-28.00S	114-31.59W	g		BMRG01MV
1800	241195	0	SBOB	C OBS 44 Karen	3260M IGPP	17-28.00S	114-31.59W	g		BMRG01MV
0017	081195	0	SBOB	B OBS 45 Maggie	3275M MPL	17-29.51S	114-57.41W	g		BMRG01MV
1800	241195	0	SBOB	C OBS 45 Maggie	3275M MPL	17-29.51S	114-57.41W	g		BMRG01MV
0600	081195	0	SBOB	B OBS 46 Jean	3353M MPL	17-34.09S	115-31.61W	g		BMRG01MV
1800	241195	0	SBOB	C OBS 46 Jean	3353M MPL	17-34.09S	115-31.61W	g		BMRG01MV
1236	081195	0	SBOB	B OBS 47 Frm 1	3232M SIO	17-40.63S	116-14.04W	g		BMRG01MV
1800	241195	0	SBOB	C OBS 47 Frm 1	3232M SIO	17-40.63S	116-14.04W	g		BMRG01MV
1751	081195	0	SBOB	B OBS 48 Frm 60	3290M WHOI	17-47.21S	116-55.60W	g		BMRG01MV
1800	241195	0	SBOB	C OBS 48 Frm 60	3290M WHOI	17-47.21S	116-55.60W	g		BMRG01MV
0242	111195	0	SBOB	B OBS 50 Frm 64	3086M WHOI	17-27.99S	113-19.00W	g		BMRG01MV
1800	241195	0	SBOB	C OBS 50 Frm 64	3086M WHOI	17-27.99S	113-19.00W	g		BMRG01MV
0859	111195	0	SBOB	B OBS 51 Frm 8	3122M SIO	17-51.00S	113-23.91W	g		BMRG01MV
1800	241195	0	SBOB	C OBS 51 Frm 8	3122M SIO	17-51.00S	113-23.91W	g		BMRG01MV
1626	111195	0	SBOB	B OBS 52 Frm 55	3145M WHOI	18-39.00S	113-30.59W	g		BMRG01MV
1800	241195	0	SBOB	C OBS 52 Frm 55	3145M WHOI	18-39.00S	113-30.59W	g		BMRG01MV
#***				End sample index						BMRG01MV