

NATIONAL ARCHIVES & PUBLIC RECORDS SERVICE
OF PAPUA NEW GUINEA

PATROL REPORTS

DISTRICT: MOROBE

STATION: SIALUM, 1966 - 1967

Original documents bound with reports
for: Pindiu, volume 4.

Papua New Guinea Patrol Reports

Digitized version made available by



Copyright: Government of Papua New Guinea. This digital version made under a license granted by the National Archives and Public Records Services of Papua New Guinea.

Use: This digital copy of the work is intended to support research, teaching, and private study.

Constraints: This work is protected by the U.S. Copyright Law (Title 17, U.S.C.) and the laws of Papua New Guinea. Use of this work beyond that allowed by "fair use" requires written permission of the National Archives of Papua New Guinea. Responsibility for obtaining permissions and any use and distribution of this work rests exclusively with the user and not the UC San Diego Library.

Note on digitized version: A microfiche copy of these reports is held at the University of California, San Diego (Mandeville Special Collections Library, MSS 0215). The digitized version presented here reflects the quality and contents of the microfiche. Problems which have been identified include misfiled reports, out-of-order pages, illegible text; these problems have been rectified whenever possible. The original reports are in the National Archives of Papua New Guinea (Accession no. 496).

[Volume 4]

NATIONAL ARCHIVES OF P.N.G. - WA VI.

PATROL REPORT OF: PINDIU KABWUM, KALASA, SIALUM ACC. No: 496.

Volume No: 6 [4] 1966/67 Number of Reports: 5

PERORT No: <u>PINDIU</u>	FOLIO	OFFICER CONDUCTING PATROL	AREA PATROLLED	MAPS/ PTS	PERIOD OF PATROL	FICHE No:
[1] 2-6/67	1-16	G J Scarlett CPO	Hube (Part)	1	2/8/1966 - 19/8/66	
[2] 4-1966/67	1-15	G J Scarlett	Hube (Part)	1	19/09/66 - 12/10/66	
[3] 6-1966/67	1-8	R PC Morrison CPO	Bulum River valley (Hube C/DIV)	1	13/2/67 - 23/2/67	
[4] 6A-1966/67	1-12	R H Simpson PO	Bulum area of Hube Census Div.	-	13/2/67 - 23/2/67	
[5] 7-1966/67	1-16	R H Simpson PO	Kua river of Hube Census Div.		6/3/67 - 15/4/67	
KABWUM		67				
[] 2-1966/67	1-20	J E Benson PO	Timbe Census Division	-	27/8/66 - 23/9/66	
[] 2A-1966/67	1-17	J E Benson PO	Timbe Census Division	1	27/8/66 - 23/9/66	
[] 3-1966/67	1-12	J E Benson PO	Komba d Part Selepet C/DIVISION	1	2/3/67 - 16/3/67	
[] 4-1966/67	1-17	J E Benson PO	Timbe Census Division	1	4/4/67 - 14/4/67	
[] 5-1966/67	1-5	J E Benson PO	Timbe Census Division	-	22/5/67 - 10/6/67	
KALASA						
[] 1-1966/67	1-31	S Gibson PO	Dedua & Kalasa Census Divs	1	24/10/66 - 14/11/66	
[] 2-1966/67	1-9	S Gibson	Dedua & Kalasa Census Divisions	-	28/11/66 - 20/12/66	
[] 3-1966/67	1-7	S Gibson	Kalasa Census Division (Part)	-	9/1/67 - 23/1/67	
SIALUM						
[] 4-1966/67	1-8	S Gibson	Kalasa Census Division	-	25/1/67 - 8/2/67	

262-67/68.

PATROL REPORTS MOROBE DISTRICT 1966-67

PINDIU

<u>Patrol No.</u>	<u>Officer Conducting Patrol</u>	<u>Area Patrolled</u>
2-66-67	G.J. Scarlett	Hube (part)
4-66-67	G.J. Scarlett	Hube (part)
6-66-67	R.P.C. Morrison	Bulum River Valley
6A-66-67	P.H. Simpson	Bulum area of Hube CD
7-66-67	P.H. Simpson	Kua River of Hube CD

KIBWUM

2-66-67	J.G. Benson	Timbe Census Division
2A-66-67	J.G. Benson	Timbe Census Division
3-66-67	J.G. Benson	Komba & part Selepet CD
4-66-67	J.G. Benson	Timbe Census Div.
5-66-67	J.G. Benson	Timbe Census Div.

KALASA

1-66-67	S. Gibson	Dedua & Kalasa Census D.
2-66-67	S. Gibson	Dedua & Kalasa Census D.
3-66-67	S. Gibson	Kalasa Census D.

STALUM

4-66-67	S. Gibson	Kalasa Census Div.
---------	-----------	--------------------



TERRITORY OF PAPUA AND NEW GUINEA

PATROL REPORT

District of MOROBE Report No. SIALUM No. 4 of 1966/67
 Patrol Conducted by S. GIBSON, Patrol Officer
 Area Patrolled KALASA CENSUS DIVISION
 Patrol Accompanied by Europeans.....
 Natives Constable 9007 TUMBI
TORE FEAVIRI, Council Clerk.
TAIKONE, NOGABA and SIMKEPE - Councillors
 Duration—From 25 1/1967 to 8 2/1967
 Number of Days 15

Did Medical Assistant Accompany? NO.
 Last Patrol to Area by—District Services Dec, 1966
 Medical/...../19.....

Map Reference District Map.
 Objects of Patrol To assist Councillors with the initial Council Tax Collection

Director of Native Affairs,
 PORT MORESBY.

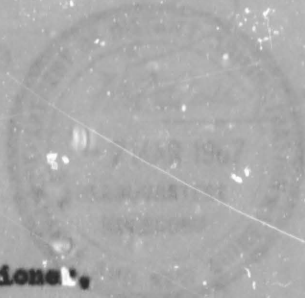
Forwarded, please.

/ / 19

.....
 District Commissioner

Amount Paid for War Damage Compensation £.....
 Amount Paid from D.N.E. Trust Fund £.....
 Amount paid from P.E.D.P. Trust Fund

67-6-36



29th May, 1967.

District Commissioner,
Honolulu District,
L.A.E.

SIALUM PATROL NO. 4 OF 1966/67:

Your 67-2-14 of the 1st March refers.

2. Your comments on Mr. Gibson's report indicate you are quite pleased with his work and progress. It seems he is a capable officer and that he conducted this patrol efficiently.

3. The readiness with which the people met their first Council tax commitments indicates an attitude favourable to the successful operation of the Town Council and the increased expectations of revenue will give it a good start.

(J. K. McCarthy)
DIRECTOR



TERRITORY OF PAPUA AND NEW GUINEA

67. 6. 36 (7)

Telegrams
Our Reference 67-2-14
If calling ask for
Mr. JJS/RMR



Department of District Administration,
Morobe District,
LAE.

1st March, 1967

Director,
Department of District Administration,
KONEDOBUI.

SIALUM PATROL NO. 4 OF 1966/67 - KALASA
CENSUS DIVISION.

...
Copy of report on the abovementioned patrol conducted by Mr. S. Gibson, Patrol Officer, is enclosed herewith together with copy of brief comments by the Assistant District Commissioner, Finschhafen.

2. This report covers a special patrol concerned with the training of Local Government Councillors of the new Tewai Council in Council tax collection procedures.

3. It is apparent that Mr. Gibson carried out his task with his usual competence and enthusiasm. No special comments are required on this patrol.

(D. N. Ashton)
a/District Commissioner.

12/5

(6)

Department of District Administration,
Sub-District Office,
FINSCHAFEN, MOROBE DISTRICT.

67-1-7

23rd. February, 1967.

The District Commissioner,
Department of District Administration,
L. A. E., MOROBE DISTRICT.

SIALUM PATROL REPORT No. 4 of 1966/67
KALASA CENSUS DIVISION.

.... I enclose original and two copies of the above Patrol Report.

The reaction by the Tewai Council taxpayers and the publicity of Council affairs pointed out in Mr. Gibson's report is most pleasing. No other comments are called for.

.... Claim for Camping Allowance is also attached.

Encls.

(D. J. MURPHY)
Assistant District Commissioner.

c.c. O.I.C.,
Bass Camp Station



TERRITORY OF PAPUA AND NEW GUINEA

67-1-7 (5)

Telegram.....

Our Reference **67-1-1**.....

If calling ask for.....

Mr.....

Department of District Administration

Base Camp,
SIALUM

17th February, 1967



The Assistant District Commissioner,
Sub-District Office,
FINSCHHAFEN

SIALUM PATROL No. 4 of 1966/67

Patrol Conducted by: **S. Gibson, Patrol Officer**

Area Patrolled: **Kalamo Census Division**

Personal Accompanying Patrol: **Const. 9007 TUMBI
TORE FEAVERI, Council Clerk
Local Government Councillors
TAIKONE, NOGABA and SINKLPR.**

Duration of the Patrol: **From 25th January, 1967
To 8th February, 1967**

Last Patrol to this Area: **D.D.A. December, 1966**

Object of the Patrol: **To assist Councillors with
the initial Council Tax
collection.**

Map Reference: **District Map.**

S. Gibson
(S. Gibson)
Officer-in-Charge

INTRODUCTION

The patrol was concerned with training Local Government Councillors in Council Tax Collection procedure. Members of the Council's Tax Review Committee were also given on the job instruction with regard to their role during tax collection.

Of the three Councillors who accompanied the patrol, two were Dedua Councillors who had had previous experience in tax collecting. Their assistance was invaluable in the training of the third Councillor.

The response to this the initial Council tax patrol was most pleasing. Defaulters were few, many aged villagers insisted on paying tax and the number of exemptions issued were fewer than has been expected. \$2654 was collected during the patrol and, as the estimated Recurrent Revenue from taxpayers from the whole Council area for 1966/67 is \$2670, it is obvious that when collections are complete in the coastal Dedua villages, the estimated tax total will be exceeded. This satisfying position may be attributed to the response afforded by the Kalasa people. Only four villages in the Council area have yet to pay their tax. These are coastal Dedua villages, and as soon as a supply of Tax Tickets is received the Clerk and the Tax Review Committee will visit these villages.

With regard to present Native affairs in the Kalasa area little of vital interest emerged during the course of the patrol. The people retain their high hope for the Council's future. They are keen to hear about Council affairs. Councillors appear to have explained the 1966/67 Draft Estimates fairly effectively to people in their respective Wards. Village Committee men have been nominated in each village and the Lalais and Tuituls acknowledge the fact that the day of their eclipse is nearing.

The usual 'dingsing' welcomed the patrol into most villages, but the pig and poultry sacrifices which were common during the Council Election period in December, 1966 were not evident. The villages themselves were noted to be generally clean and tidy with a fair standard of housing and sanitation being maintained. Roads throughout the Kalasa area are in reasonable condition despite the current 'wet' season. Rest Houses, too, despite their size were found to be fairly well cared for. Minor complaints were heard during the patrol. All were settled amicably. The standard of health throughout the area was pleasing.

Because of the special and restricted nature of this patrol, a formal Patrol Report as laid down in Departmental Standing Instructions is not submitted.

PATROL DIARY

- 25.1.67 0800 To Nanda - tax collection
1000 To Kanomi - tax collection
1300 To Kanzarua - tax collection
Overnight Kanzarua.
- 26.1.67 0900 To Sambe - tax collection
1300 To Ririwo - tax collection
2000 Marital dispute heard and settled
Overnight Ririwo.
- 27.1.67 0745 To Ga - tax collected
1100 To Samep - tax collected
1400 To Zankoa 1700 tax collected
Overnight Zankoa.
- 28.1.67 0730 Completed Zankoa tax collection
0900 To Zakubep - tax collection
1200 To Gerup - tax collection
1600 To Karako 1630 Discussion with V/Os
Overnight Karako.
- 29.1.67 1000 Collected Karako tax
pm Observed
Overnight Karako.
- 30.1.67 0730 To Meiawa - tax collected
0830 To Tunge - tax collected
1100 To Rua - tax collected
1300 Collected Soweng tax
1600 General discussion with Village people
Overnight Rua.
- 31.1.67 0800 To Bakoa - tax collection
1100 To Kip - collected tax
1400 To Rikoko - collected Kaunkeo tax
Overnight Rikoko
- 1.2.67 0700 To Kalasa LM - tax collection
0930 To Kukuya - tax collection
1300 To Wetna - tax collection
1600 To Sikikia
Overnight Sikikia
- 2.2.67 0730 Collected Sikikia tax
1000 Discussed ASAK-KIWIA Lease with people
1030 To Sialum (Tax Team to Paukwanga)
1310 Arrived Sialum
Overnight Sialum
- 3.2.67 To Kanomi and collected materials for
Council meeting
Overnight Sialum.
- 4.2.67 Observed and overnight Sialum.
- 5.2.67 0800 To Gitua - tax collection
1500 General discussion with people
Overnight Gitua.
- 6.2.67 0715 To Kumukio - tax collection
2000 Heard and settled marital dispute
Overnight Kumukio.

7.2.67 0700 To Gitua - Discussion with Clr. NIM
re activities of School Teacher LENU
MARASUI

1130 To Nema - tax collection
1300 To Sialum - tax collection
Overnight Sialum.

8.2.67 0900 Completed Sialum tax collection
Overnight Sialum.

End of Patrol