

INFORMAL REPORT AND INDEX OF
NAVIGATION, DEPTH AND MAGNETIC DATA

(Issued June 30, 1978)

INDOMED EXPEDITION

LEG 7

Colombo, Sri Lanka (4 April 1978)
to
Port Louis, Mauritius (24 April 1978)
R/V Melville

Chief Scientist - D. Spencer (Woods Hole Oceanographic Inst.)

Resident Marine Tech - R. Comer

Post-Cruise Processing and Report Preparation
by S.I.O. Geological Data Center

Data Collection Funded by NSF
Grant Number OCE76-03936
Data Processing Funded by SIA, NSF, ONR

NOTE: This is an index of underway geophysical data edited and processed shortly after the completion of the cruise leg and is intended primarily for informal use within the institution. This document is not to be reproduced or distributed outside Scripps without prior approval of the Geological Data Center, Scripps Institution of Oceanography, La Jolla, California 92093.

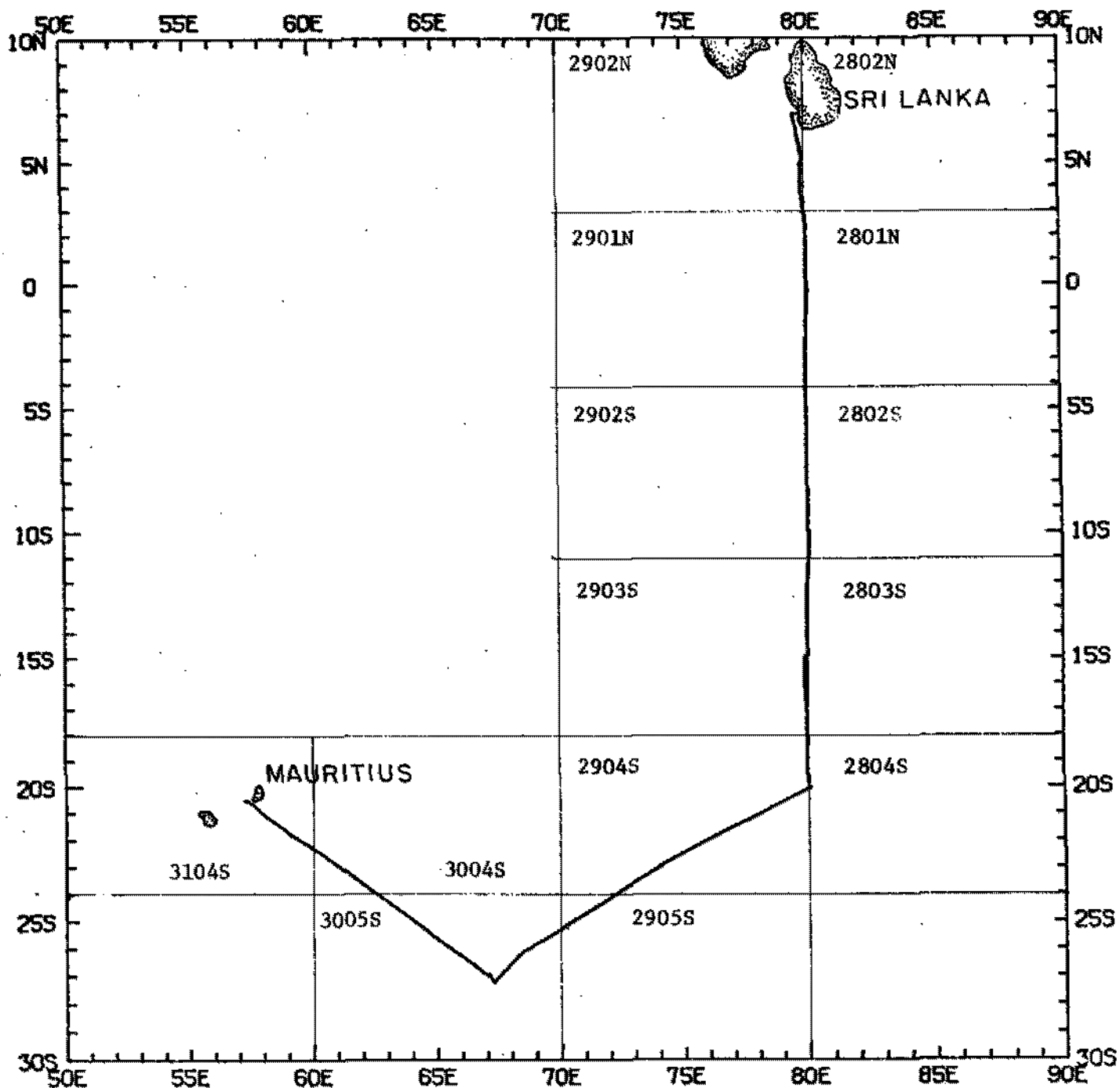
Informal Report and Index of Navigation, Depth, Magnetic and Subbottom Profiler Data*

Contents:

- Index Chart** - gives track of cruise leg and boundaries of depth compilation plots (see below).
- Track Charts** - annotated with dates (day/month) and hour ticks. The scale is .3"/deg. long.
- Profiles** - Depth and magnetic anomaly vs. distance. Dates (day/month) and positions of major course changes (greater than 30 degrees) are annotated. Sections of track having subbottom profiler (airgun) records have a solid black line along the bottom of the profile.

For information on the availability and reproduction costs of data in the following forms, contact S. M. Smith, Curator, Geological Data Center, Scripps Institution of Oceanography, La Jolla, California 92093. Phone: (714) 452-2752.

1. Navigation listing of times and positions of course and speed changes, fixes and drift velocity.
2. Depth compilation plots - in fathoms (assumed sound velocity of 800 fm./sec.) at approximately 1 mile spacing, plotted at 4"/degree with standard U. S. Navy Oceanographic Office BC series boundaries (see index chart).
3. Plots of magnetic anomaly profiles along track - map scale = 1.2"/degree; anomaly scale between 15°N and 15°S latitude = 500 gamm/inch; anomaly scale north of 15°N and south of 15°S = 1000 gamm/inch; from values retrieved at approximately 1 mile spacing and regional field removed using the 1975 IGRF.
4. Card decks of navigation, depth and magnetics (for specific formats, contact S. M. Smith, Geological Data Center).
5. S. I. O. Sample Index - list of beginning and end times and positions of all underway records as well as all other samples (geology, biology, physical oceanography, etc.) collected on the cruise leg.
6. Microfilm or Xerox copies of:
 - a. Echosounder records - 12 and 3.5 kHz frequency
 - b. Subbottom profiler records (airgun)
 - c. Magnetometer records
 - d. Underway Data Log



INDOMED EXPEDITION
LEG 7

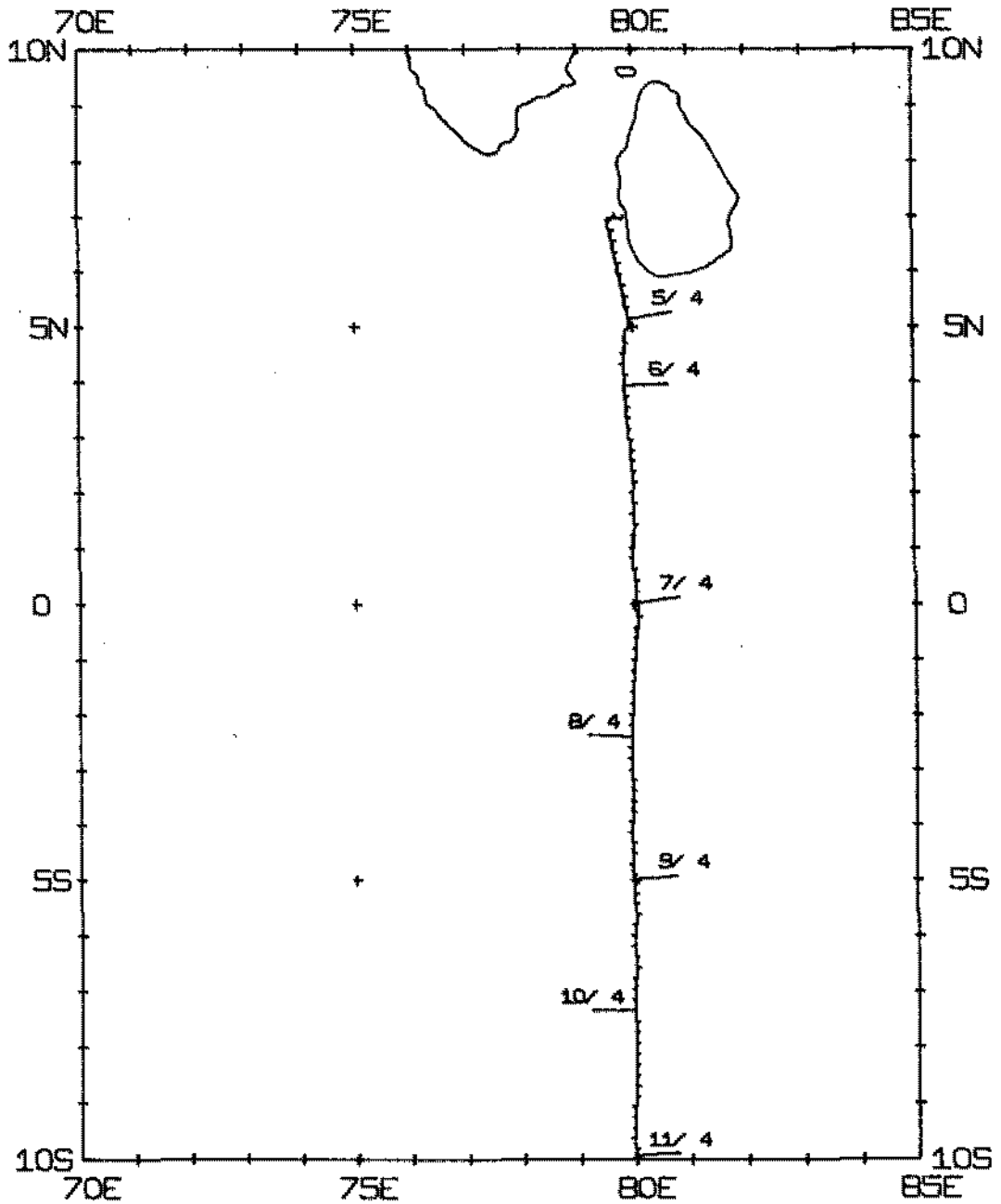
Chief Scientist - D. Spencer (Woods Hole Oceanographic Inst.)
 Ports: Colombo, Sri Lanka - Port Louis, Mauritius
 Dates: 4 April - 24 April 1978
 Ship: R/V Melville

TOTAL MILEAGE

- 1) Cruise - 3277 miles
- 2) Bathymetry - 2981 miles
- 3) Magnetics - 3024 miles
- 4) Seismic Reflection - none collected

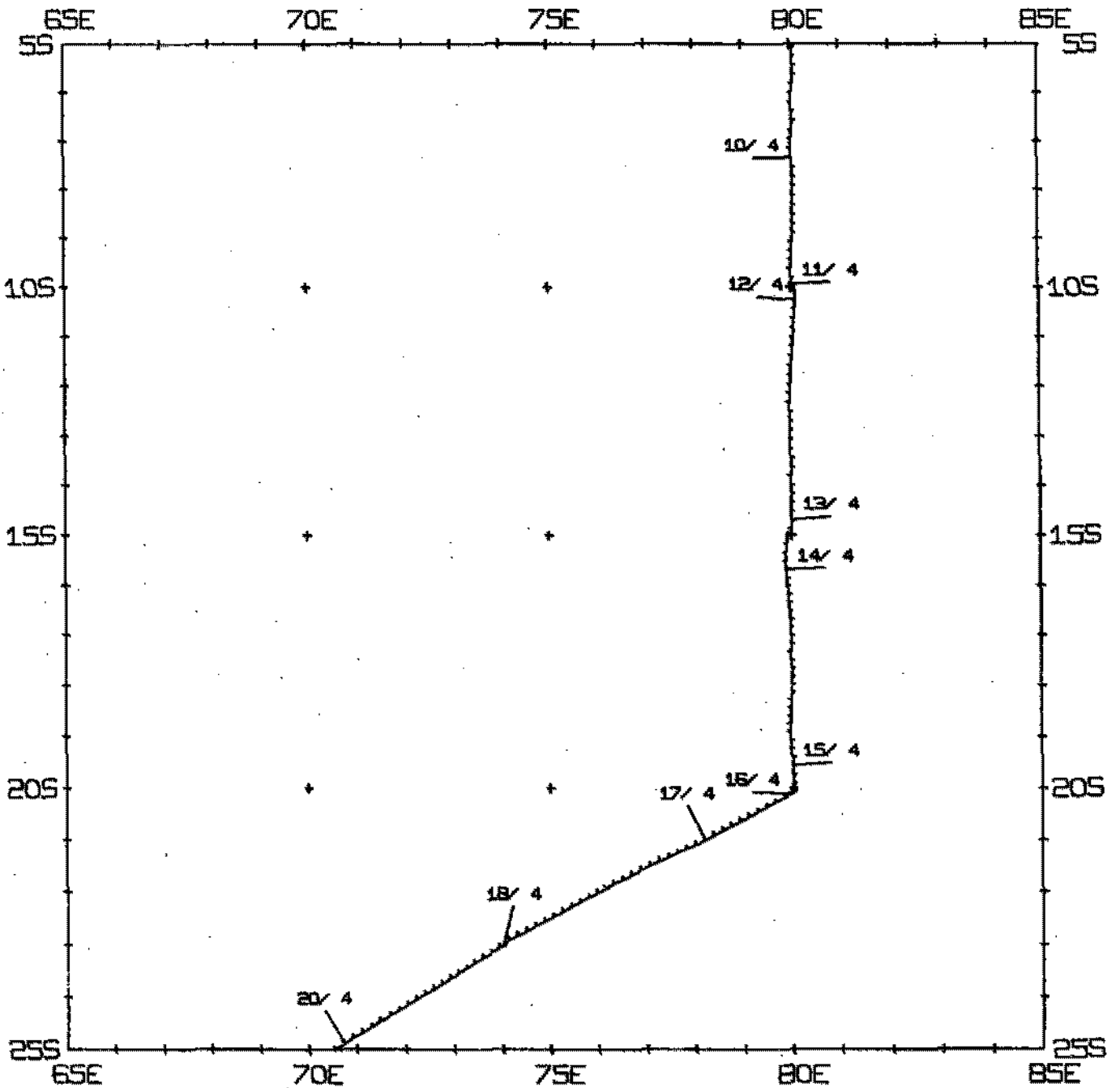
INM007MV TRACK PLOT (1 OF 3)

MERCATOR PROJECTION, SCALE= 0.312 IN/DEG LONGITUDE



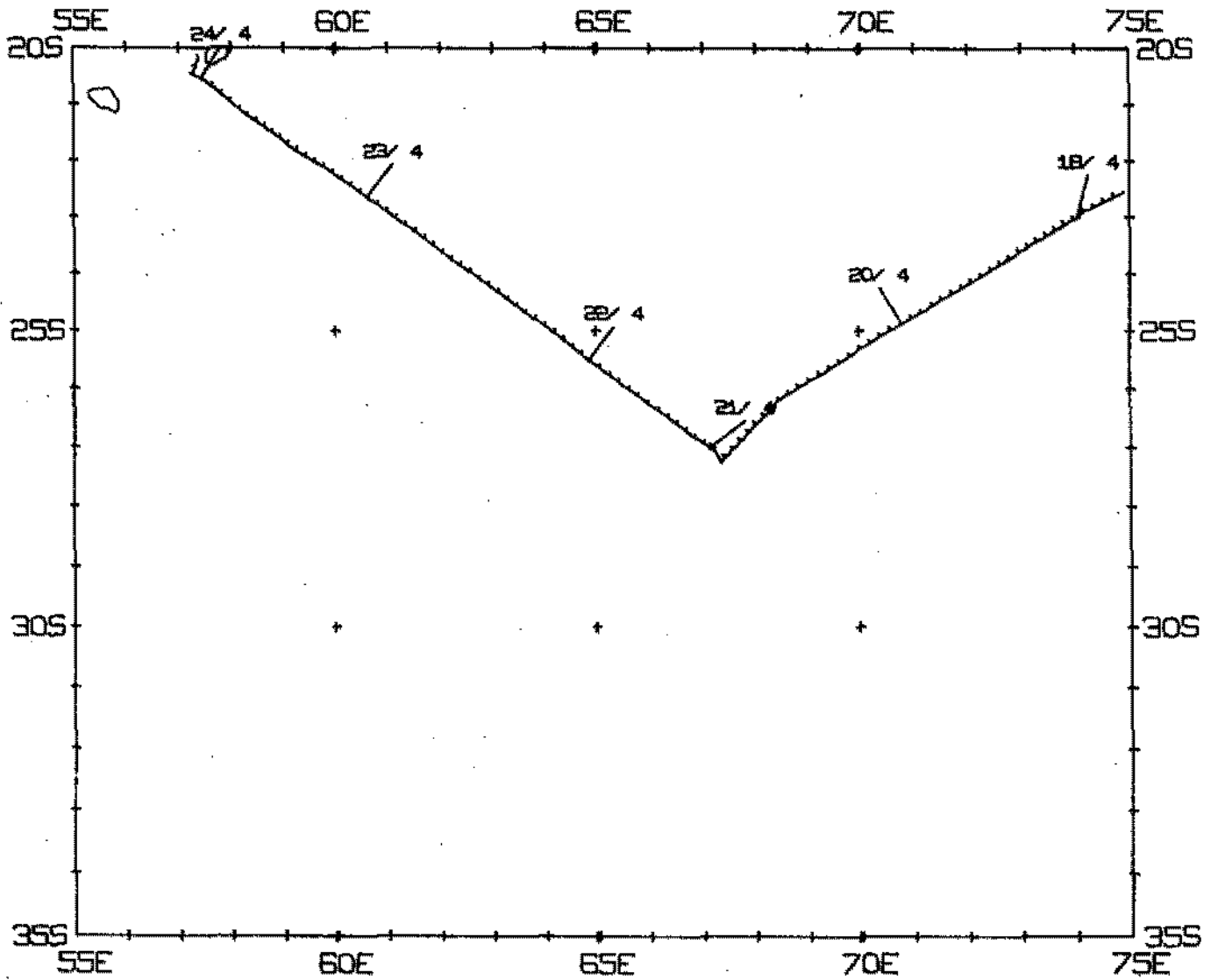
INM007MV TRACK PLOT (2 OF 3)

MERCATOR PROJECTION, SCALE= 0.312 IN/DEG LONGITUDE

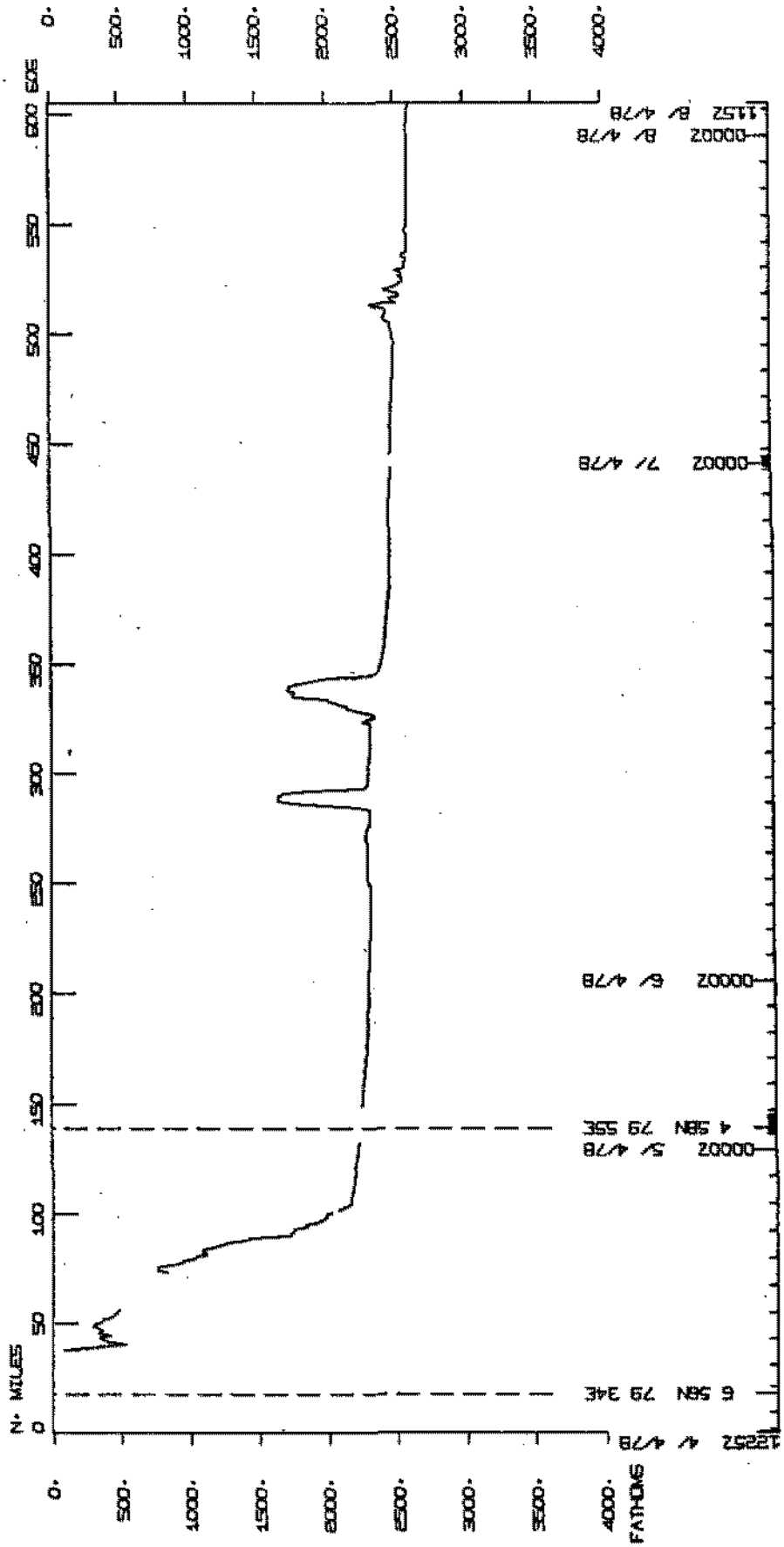
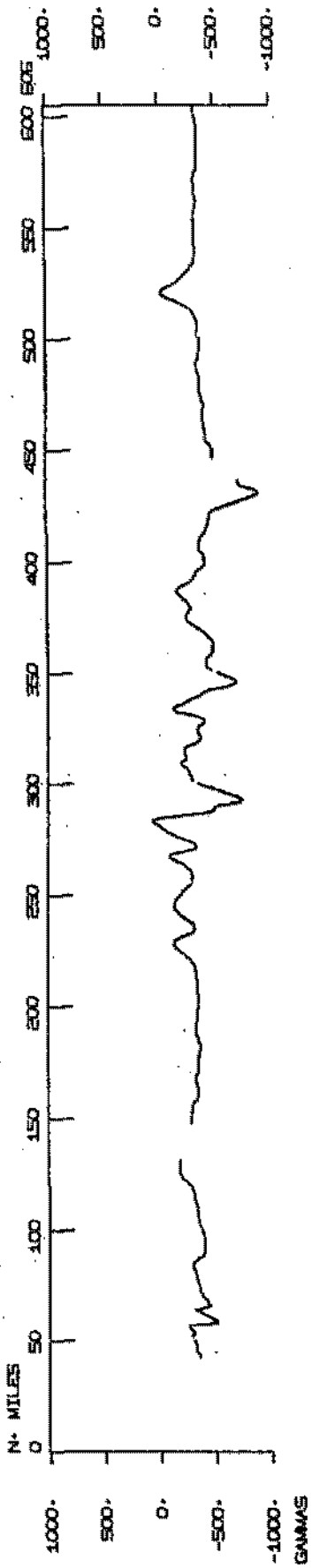


INM007MV TRACK PLOT (3 OF 3)

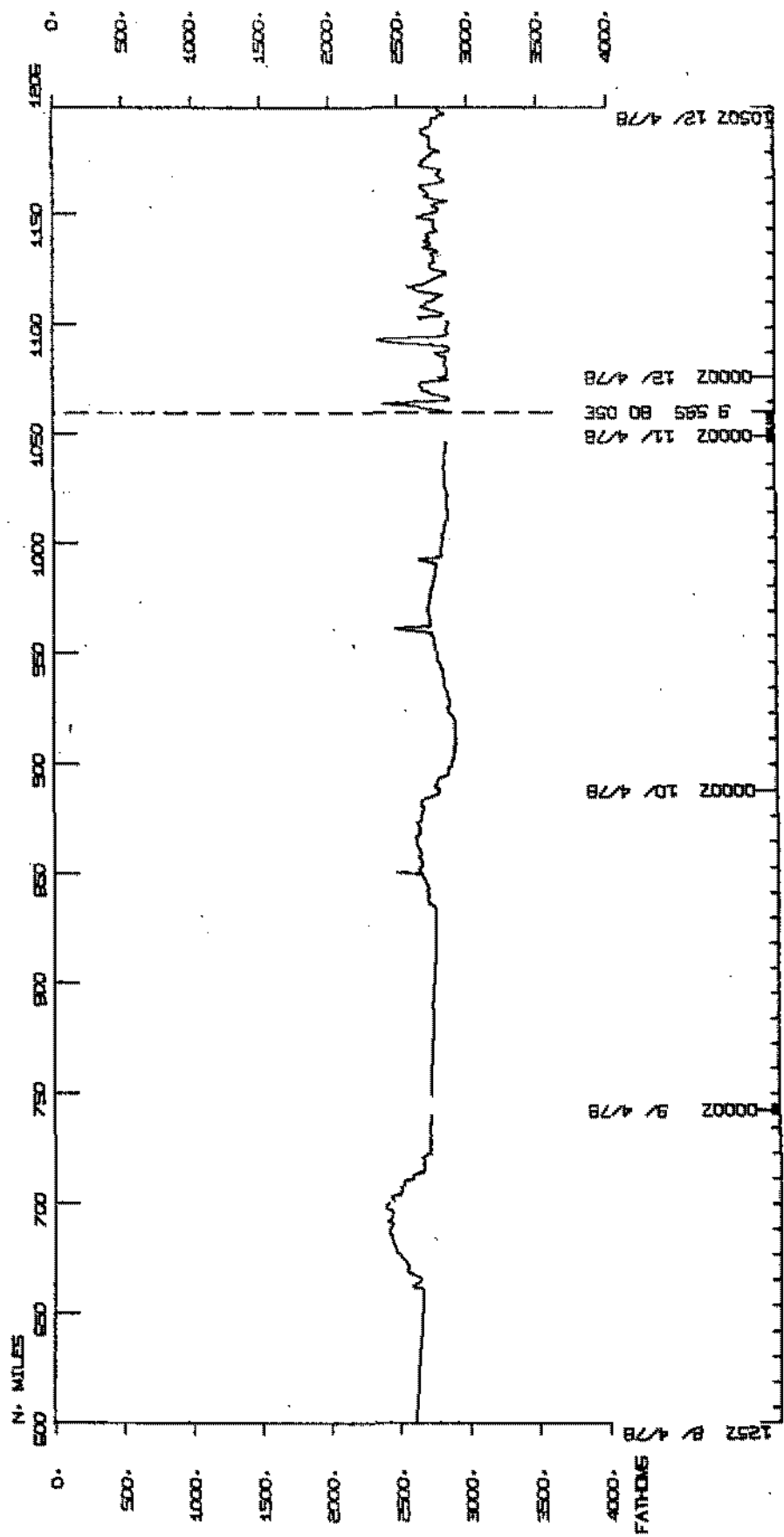
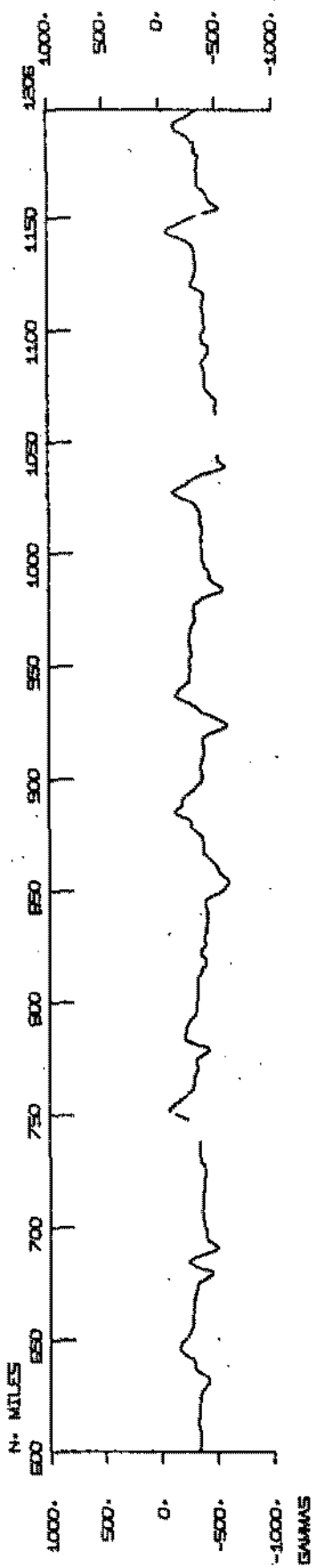
MERCATOR PROJECTION, SCALE= 0.312 IN/DEG LONGITUDE



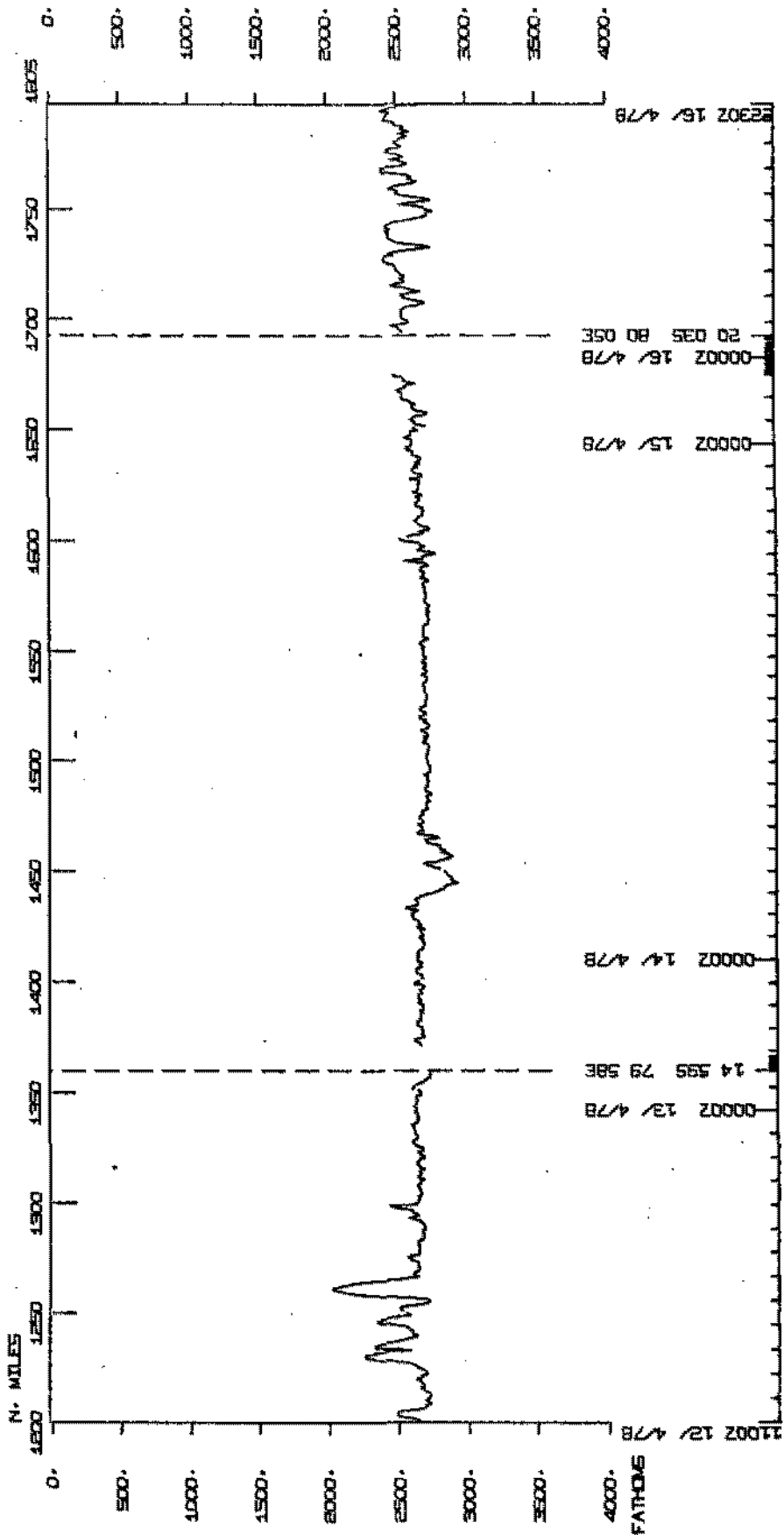
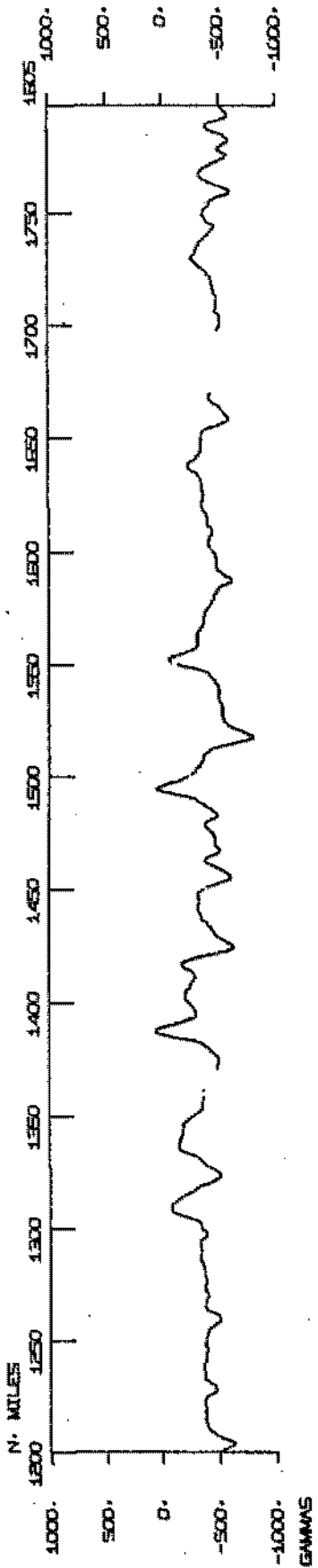
INDOMED LEG 7



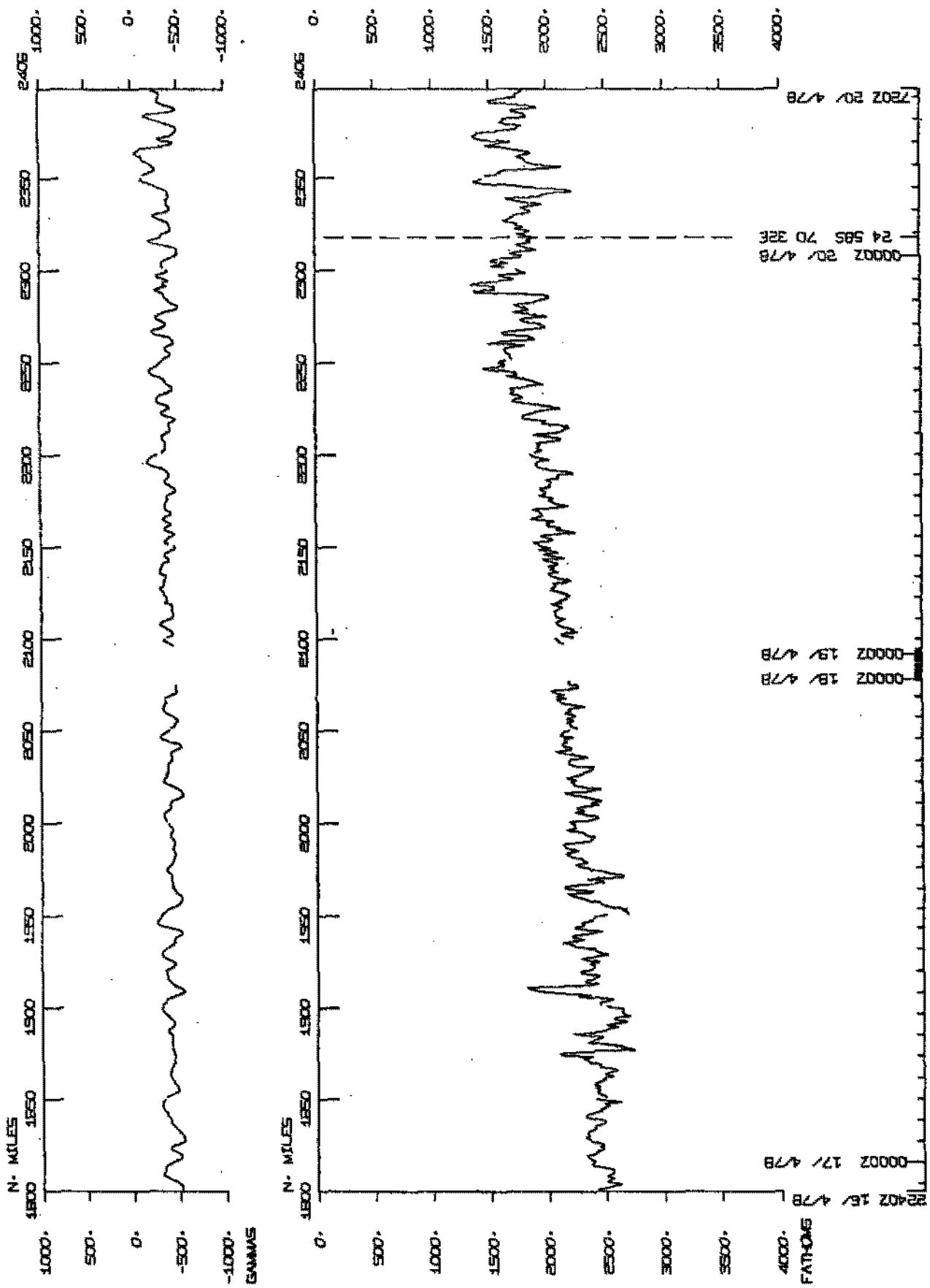
INDOMED LEG 7



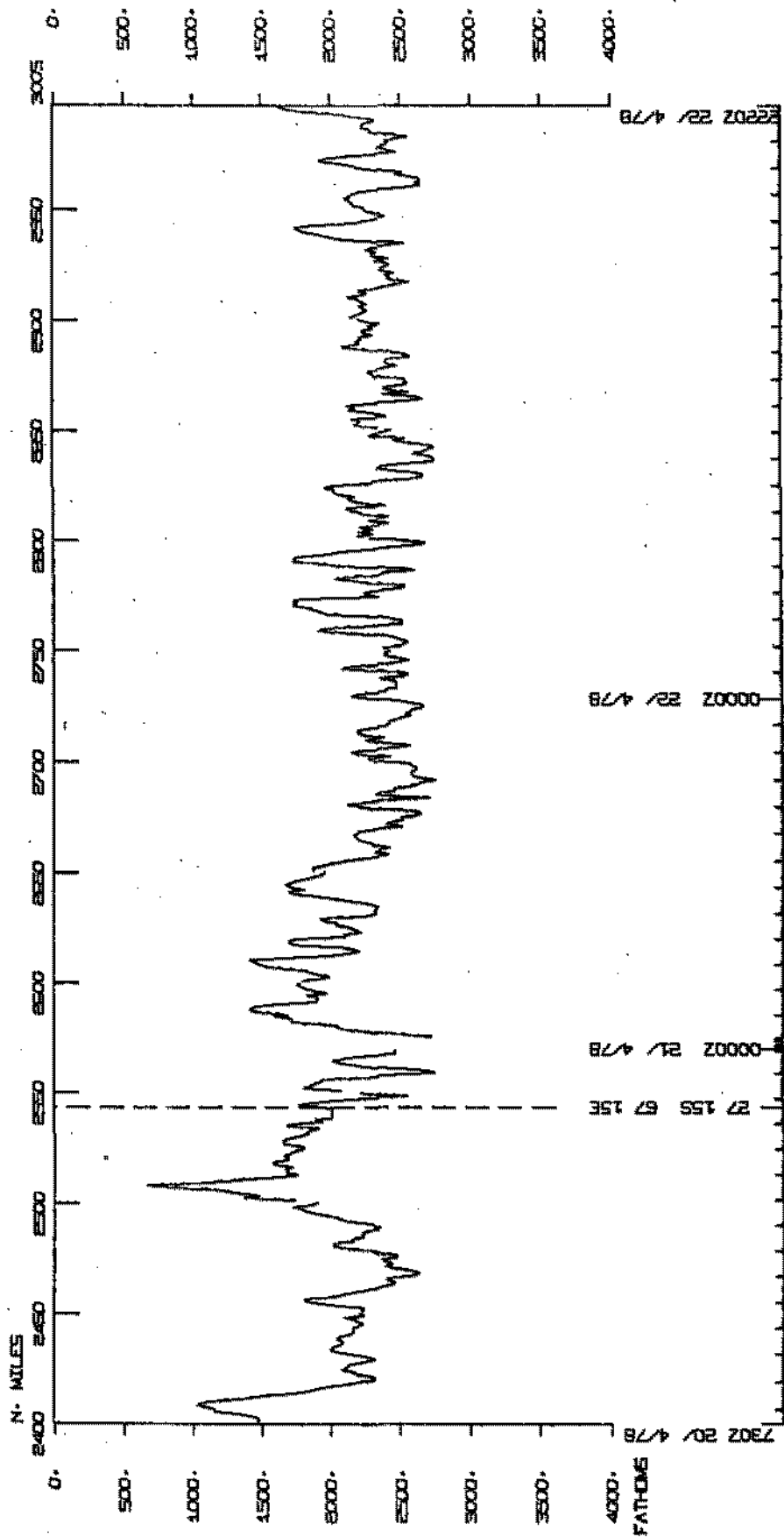
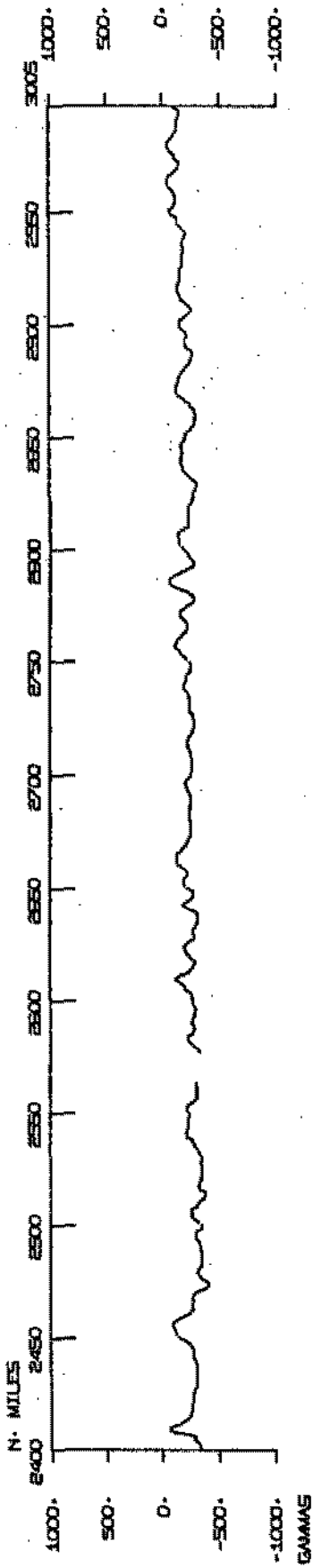
INDOMED LEG 7



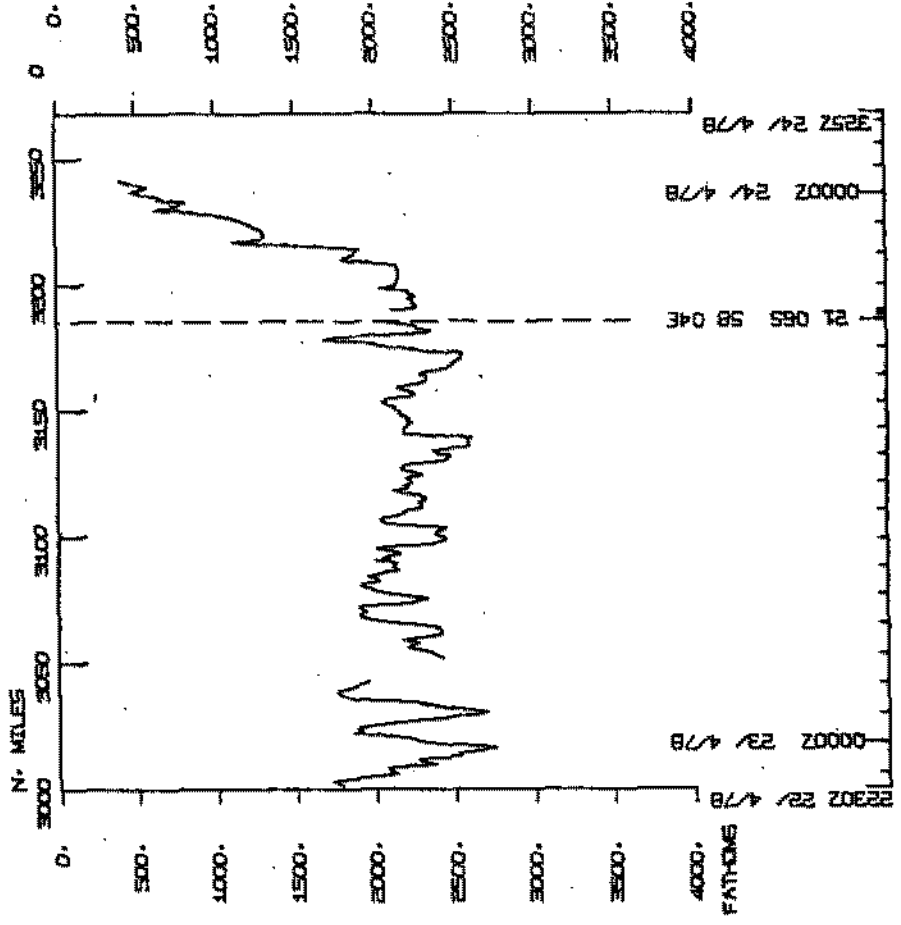
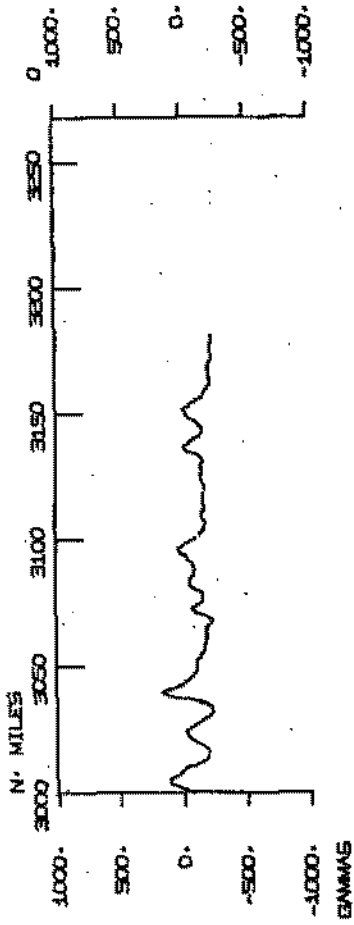
INDOMED LEG 7



INDOMED LEG 7



INDOMED LEG 7



S.I.O SAMPLE INDEX
(Issued June 28, 1978)

INDOMED EXPEDITION

LEG 7

Colombo, Sri Lanka (4 April 1978)
to
Port Louis, Mauritius (24 April 1978)

R/V Melville

Chief Scientist - D. Spencer (Woods Hole Oceanographic Inst.)

Resident Marine Tech - R. Comer

Post-Cruise Processing and Report Preparation
by S.I.O. Geological Data Center

Index Encoding Funded by NSF
Grant Number OCE76-80618
Index Processing and Report Preparation
Funded in part by SIA

The Sample Index is a first level interdisciplinary listing of time, position, sample identification and disposition of all samples, records and measurements collected on this cruise leg. The index data are encoded at sea by the Resident Technician and processed on shore by the S.I.O. Geological Data Center shortly after the completion of the cruise leg.

Positions are interpolated on the basis of sample time by comparison to a single, edited navigation file. Samples beginning at one time and position and ending at another are entered on two consecutive cards. Disposition and sample type are represented by three and four character codes to permit future computer searches on these parameters. (Listings defining these codes are available from the Geological Data Center.)

NOTE: This document is intended primarily for informal use within the institution and is not to be reproduced or distributed outside Scripps without prior approval of the Geological Data Center, Scripps Institution of Oceanography, La Jolla, California 92093.

NUMBER OF SAMPLES OF CLASS 'TYPE' GOING TO DESTINATION 'DISP'

DISP	TYPE					TOTAL	
	DP	GC	LB	MG	PE		
GDC	1	2	1	2	1	5	
GRD	1				1	1	
GSX	1	8			14	22	
ISL	1				1	1	
LDO	1				2	2	
MTG	1				1	1	
NZD	1				1	1	
PRL	1				2	2	
WHO	1				2	2	
TOTAL	1	2	8	1	2	24	37

SAMPLE 'TYPE' CODES USED ABOVE

DP = DEPTH
 GC = GEOCHEMICAL SAMPLING
 LB = LOG BOOKS
 MG = MAGNETICS (TOWED VEHICLE, SURFACE, TOTAL FIELD)
 PE = PERSONNEL IN SCIENTIFIC PARTY

SAMPLE 'DISP' CODES USED ABOVE

GDC = GEOLOGICAL DATA CENTER -- S. SMITH (EXT. 2752)
 GRD = GEOLOGICAL RESEARCH DIVISION (EXT. 3360)
 GSX = GEOCHEMICAL OCEAN SECTIONS STUDY (EXT. 4420)
 ISL = STATE OF ISRAEL
 LDO = LAMONT-DOHERTY GEOPHYSICAL OBSERVATORY, COLUMBIA UNIVERSITY
 MTG = MARINE TECHNOLOGY GROUP (EXT 4194)
 NZD = NEW ZEALAND
 PRL = PACIFIC RESEARCH LABORATORY
 WHO = WOODS HOLE OCEANOGRAPHIC INSTITUTION

SAMPLE INDEX INDDMED LEG 07

INMD07MV

*** PORTS ***

1230 4 478	LGPT B COLUMBO, SRI LANKA	6 564N 79 507E S	INMD07MV
415 24 478	LGPT E PORT LOUIS, MAURITIUS	20 95S 57 30 E F	INMD07MV

PERSONNEL

PECS	SPENCER, D.	WHO	INMD07MV
PERT	COMER, R.	MTG	INMD07MV
PE	BEAUPRE, M.	GSX	INMD07MV
PE	BOS, D.	GSX	INMD07MV
PECT	CHARTERS, J.	MTG	INMD07MV
PE	CHRISTIANSEN, M.	GSX	INMD07MV
PENT	COLBERT, J.	GSX	INMD07MV
PE	FLEER, A.	WHO	INMD07MV
PEXN	GOBAT, D.	GSX	INMD07MV
PE	JAEGER, E.	GSX	INMD07MV
PEXN	KRISHNAMURTHY, R.	PRL	INMD07MV
PESR	MANTYLA, A.	GSX	INMD07MV
PECT	MANTYLA, N.	GSX	INMD07MV
PE	MORRIGNE, M.	GSX	INMD07MV
PENT	RAGAN, P.	GSX	INMD07MV
PE	SAIGH, D.	LDD	INMD07MV
PE	SANBORN, K.	GSX	INMD07MV
PEXN	SANTCHI, P.	GSX	INMD07MV
PEXN	SARIN, M.	PRL	INMD07MV
PENT	SCHECHTMAN, N.	LDD	INMD07MV
PEXN	SMITHS, A.	NZD	INMD07MV
PEXN	STEINHORN, I.	ISL	INMD07MV
PENT	WELLS, J.	GSX	INMD07MV
PENT	WITHEROW, S.	GSX	INMD07MV

*** NOTE *** TIME ZONES AND MINUTES OF LATITUDE AND LONGITUDE ARE LISTED
IN TENTHS (E.G. 10.6 IS LISTED AS 106)

*** NOTE *** AN 'X' IN THE (B)EGIN/(E)ND COLUMN FOLLOWING THE SAMPLE
CODE INDICATES NO. SAMPLE OR DATA RECOVERED

TIME GMT	DATE D.M.Y.	TIME T2 LUC	SAMP LOC CODE	SAMPLE IDENT.	DISP CODE	LAT.	LONG.	CRUISE LEG-SHIP
-------------	----------------	----------------	------------------	---------------	--------------	------	-------	--------------------

UNDERWAY DATA CURATOR - STUART M. SMITH (EXT. 2752)

*** LOG BOOKS ***

1645	040478		LBUW B	UNDERWAY WATCH LOG	GDC 6	348N	79 386E	S INMD07MV
0030	240478		LBUW E	UNDERWAY WATCH LOG	GDC 20	301S	57 155E	S INMD07MV

*** FATHOGRAMS ***

1645	4 478		DPR3 B	EDR 3.5 KHZ ROLL-01	GDC 6	348N	79 386E	S INMD07MV
255	15 478		DPR3 E	EDR 3.5 KHZ ROLL-01	GDC 20	52S	80 3E	S INMD07MV
1330	16 478		DPR3 B	EDR 3.5 KHZ ROLL-02	GDC 20	32S	80 46E	S INMD07MV
42	24 478		DPR3 E	EDR 3.5 KHZ ROLL-02	GDC 20	301S	57 155E	S INMD07MV

*** MAGNETOMETER ***

1700	4 478		MGR B	MAGNETICS ROLL-01	GDC 6	318N	79 393E	S INMD07MV
1300	19 478		MGR E	MAGNETICS ROLL-01	GDC 23	445S	72 429E	S INMD07MV
1311	19 478		MGR B	MAGNETICS ROLL-02	GDC 23	456S	72 410E	S INMD07MV
1445	23 478		MGR E	MAGNETICS ROLL-02	GDC 21	79S	58 65E	S INMD07MV

GEOCHEMICAL STATION - LARGE VOLUME

25	5 478		GCLV B	GEOSECS STA. 447	GSX 5	44N	79 572E	S INMD07MV
1910	5 478		GCLV E	GEOSECS STA. 447	GSX 4	510N	79 518E	S INMD07MV
2005	6 478		GCLV B	GEOSECS STA. 448	GSX 0	16N	80 30E	S INMD07MV
1150	7 478		GCLV E	GEOSECS STA. 448	GSX 0	2S	80 56E	S INMD07MV
1325	8 478		GCLV B	GEOSECS STA. 449	GSX 4	597S	79 596E	S INMD07MV
1630	9 478		GCLV E	GEOSECS STA. 449	GSX 5	547S	80 15E	S INMD07MV
1400	10 478		GCLV B	GEOSECS STA. 450	GSX 9	595S	80 1E	S INMD07MV
2235	11 478		GCLV E	GEOSECS STA. 450	GSX 10	7S	80 52E	S INMD07MV
130	13 478		GCLV B	GEOSECS STA. 451	GSX 14	582S	79 589E	S INMD07MV
2000	13 478		GCLV E	GEOSECS STA. 451	GSX 15	3S	79 527E	S INMD07MV

TIME GMT	DATE D.M.Y.	TIME LOC	TZ LOC	SAMP CODE	SAMPLE IDENT.	DISP CODE	LAT.	LONG.	CRUISE LEG-SHIP
300	15	478		GCLV B	GEOSECS STA. 452	GSX 20	55S	80 3E	S INMDO7MV
1330	16	478		GCLV E	GEOSECS STA. 452	GSX 20	32S	80 46E	S INMDO7MV
2235	17	478		GCLV B	GEOSECS STA. 453	GSX 22	594S	74 3E	S INMDO7MV
525	19	478		GCLV E	GEOSECS STA. 453	GSX 23	6S	74 3E	S INMDO7MV
2155	20	478		GCLV B	GEOSECS STA. 454	GSX 26	595S	67 57E	S INMDO7MV
1100	21	478		GCLV E	GEOSECS STA. 454	GSX 27	27S	67 54E	S INMDO7MV
9900					END SAMPLE INDEX				INMDO7MV