

INFORMAL REPORT AND INDEX OF
NAVIGATION, BATHYMETRY AND MAGNETIC DATA
(Issued January 1980)

RISETHREE EXPEDITION LEG 3

Mazatlan, Mexico (29 March, 1979)
to
Mazatlan, Mexico (22 April, 1979)

Chief Scientist - R. Batiza (Washington University,
St. Louis, Missouri)

Post-Cruise Processing and Report Preparation
by S.I.O. Geological Data Center

NOTE: This is an index of underway geophysical data edited and processed shortly after the completion of the cruise leg and is intended primarily for informal use within the institution. This document is not to be reproduced or distributed outside Scripps without prior approval of the chief scientist or the Geological Data Center, Scripps Institution of Oceanography, La Jolla, California 92093.

Informal Report and Index of Navigation, Depth, Magnetic and Subbottom Profiler Data*

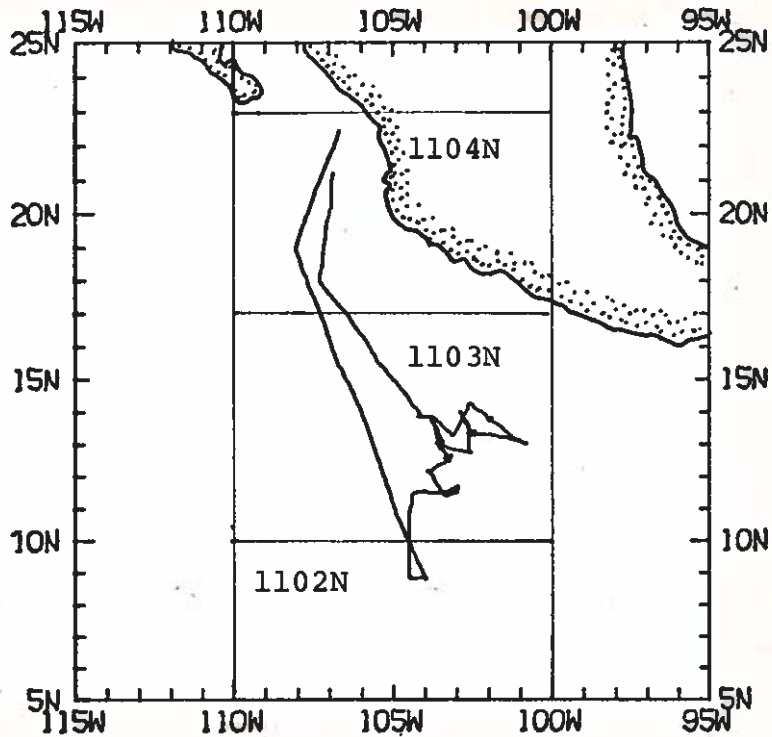
Contents:

- Index Chart** - gives track of cruise leg and boundaries of depth compilation plots (see below).
- Track Charts** - annotated with dates (day/month) and hour ticks. The scale is .3"/deg. long.
- Profiles** - Depth and magnetic anomaly vs. distance. Dates (day/month) and position of major course changes (greater than 30 degrees) are annotated. Sections of track having subbottom profiler (airgun) records have a solid black line along the bottom of the profile.

For information on the availability and reproduction costs of data in the following forms contact S. M. Smith, Curator, Geological Data Center, Scripps Institution of Oceanography La Jolla, California 92093. Phone: (714) 452-2752.

1. Navigation listing of times and positions of course and speed changes, fixes and drift velocity.
2. Depth compilation plots - in fathoms (assumed sound velocity of 800 fm./sec.) at approximately 1 mile spacing, plotted at 4"/degree with standard U. S. Navy Oceanographic Office BC series boundaries (see index chart).
3. Plots of magnetic anomaly profiles along track - map scale = 1.2"/degree; anomaly scale between 15°N and 15°S latitude = 500 gamn/inch; anomaly scale north of 15°N and south of 15°S = 1000 gamn/inch; from values retrieved at approximately 1 mile spacing and regional field removed using the 1975 IGRF.
4. Card decks of navigation, depth and magnetics (for specific formats, contact S. M. Smith, Geological Data Center).
5. S. I. O. Sample Index - list of beginning and end times and positions of all underway records as well as all other samples (geology, biology, physical oceanography, etc.) collected on the cruise leg.
6. Microfilm or Xerox copies of:
 - a. Echosounder records - 12 and 3.5 kHz frequency
 - b. Subbottom profiler records (airgun)
 - c. Magnetometer records
 - d. Underway Data Log

* NO SUBBOTTOM PROFILER DATA COLLECTED



RISHTHREE EXPEDITION LEG 3

Chief Scientist: Rody Batiza (Washington University,
St. Louis, Missouri)

Ports: Mazatlan - Mazatlan, Mexico

Dates: 29 March - 22 April 1979

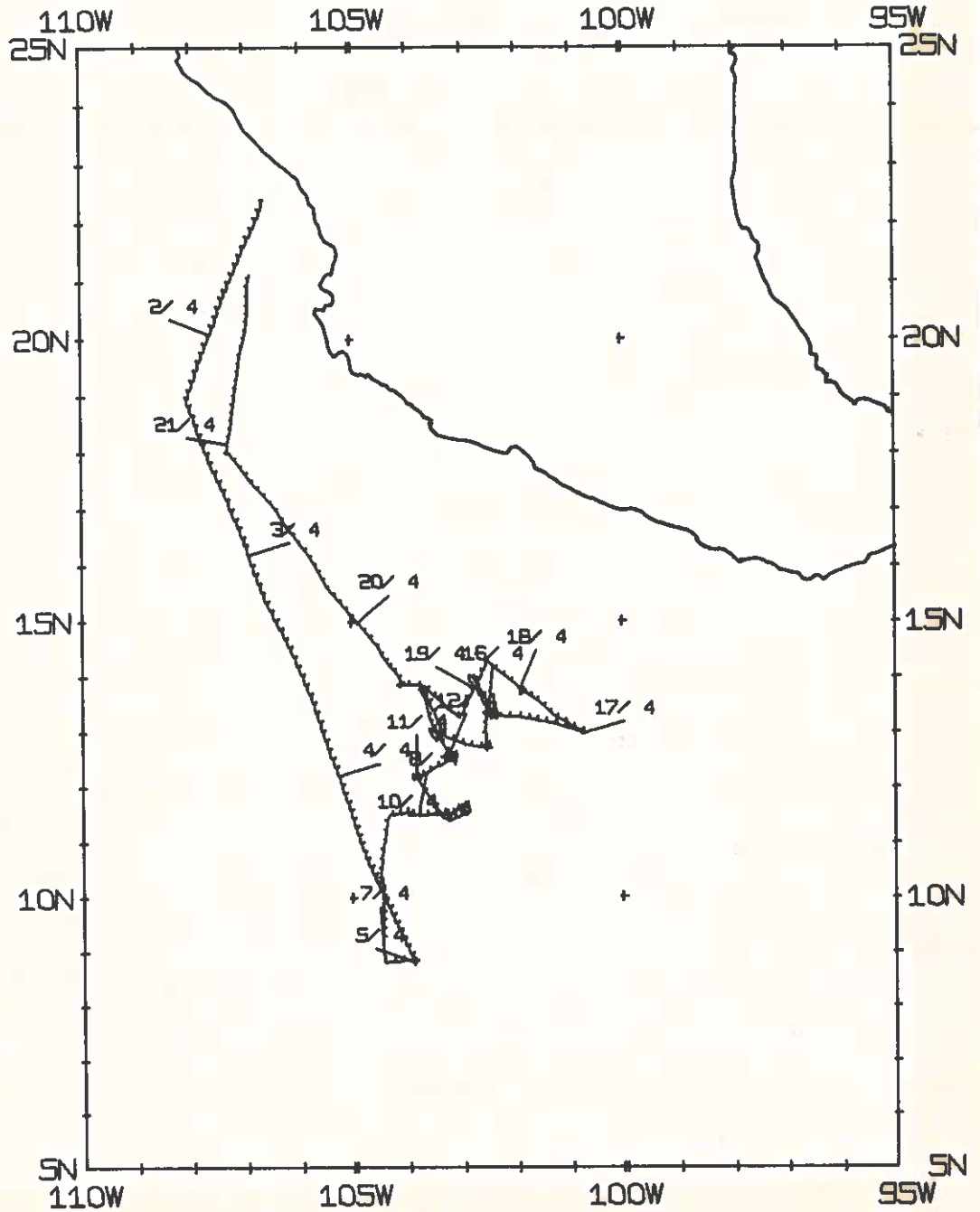
Ship: R/V New Horizon

TOTAL MILEAGE

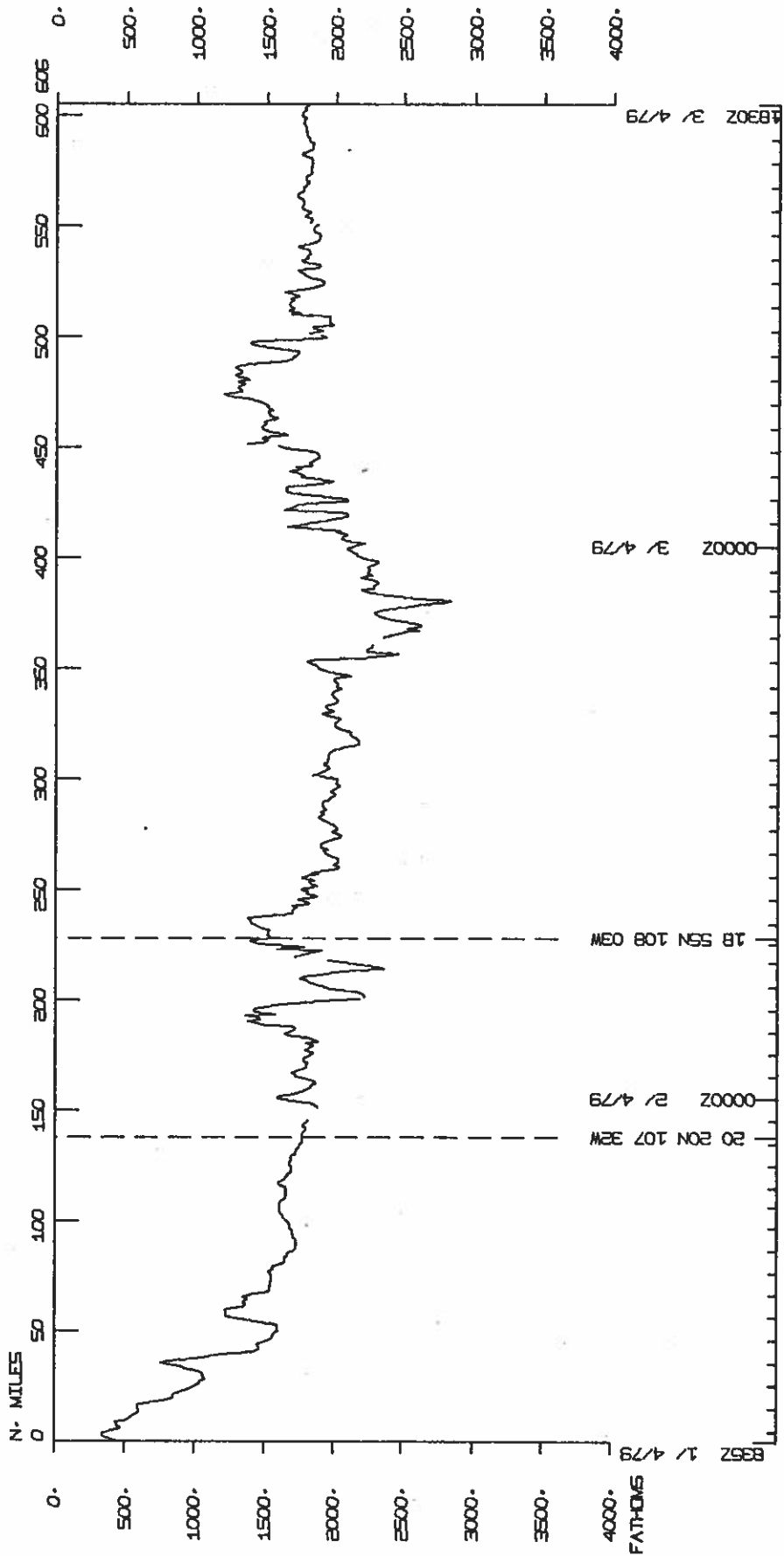
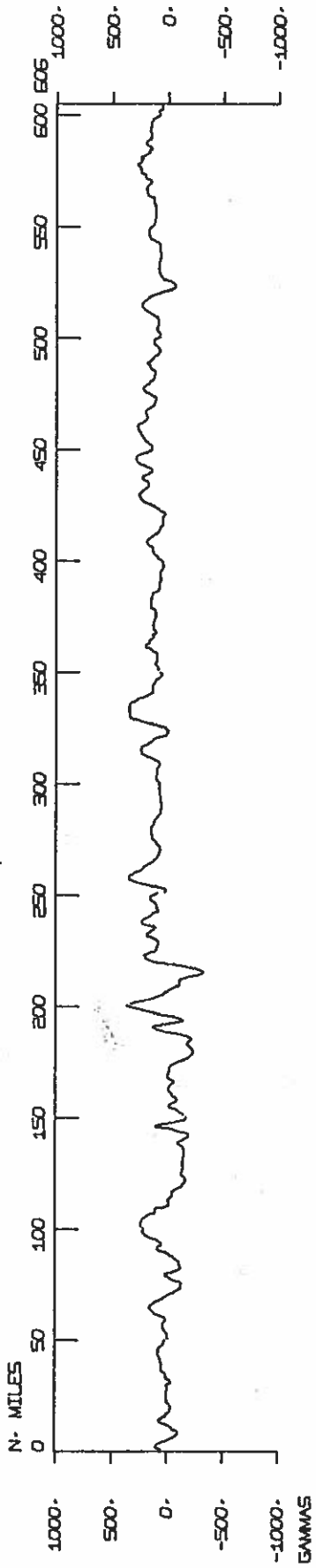
- 1) Cruise - 3107 miles
- 2) Bathymetry - 3090 miles
- 3) Magnetics - 2987 miles
- 4) Seismic Reflection - none collected
- 5) Gravity - none collected

RISETHREE, LEG 3

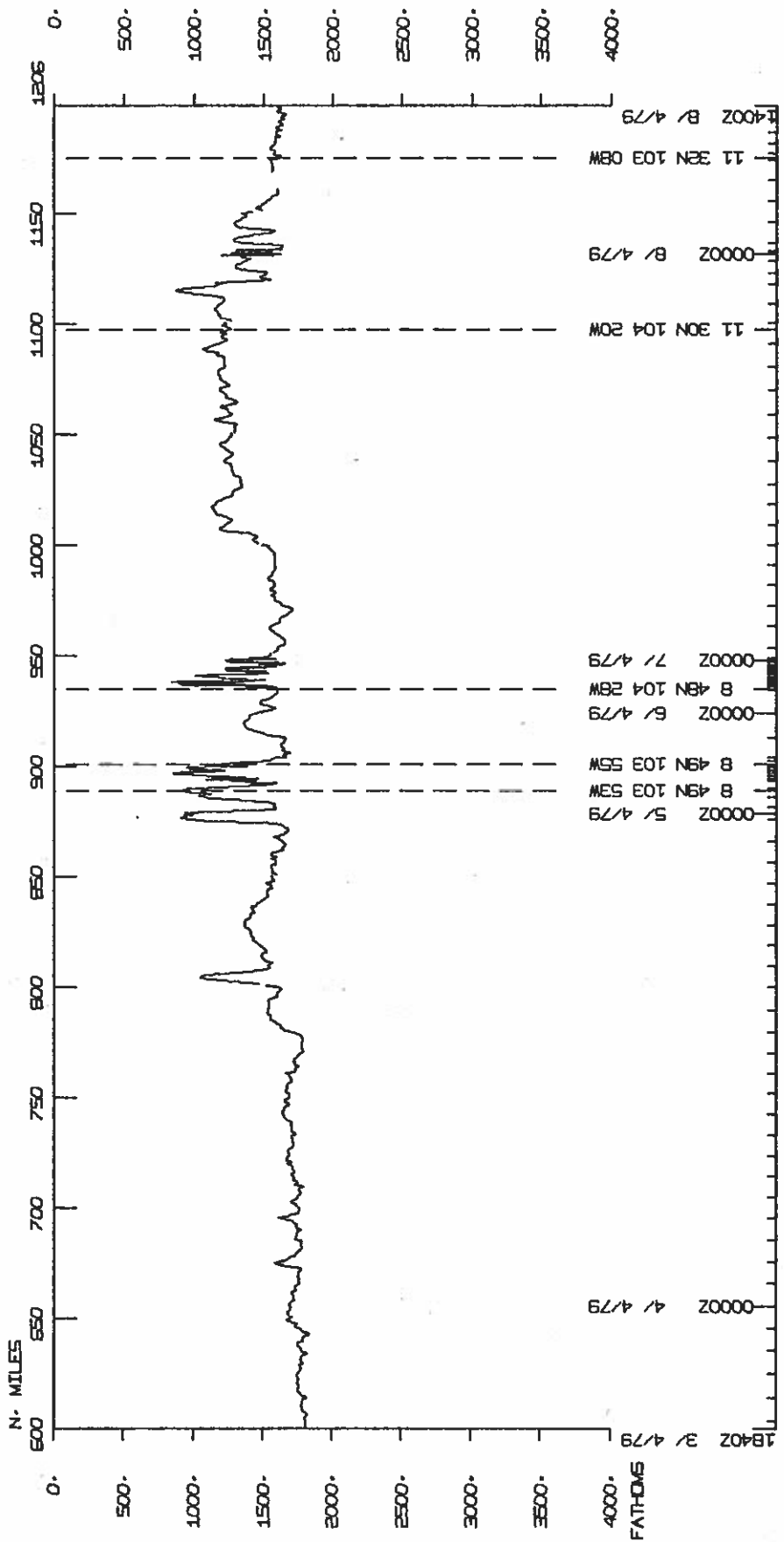
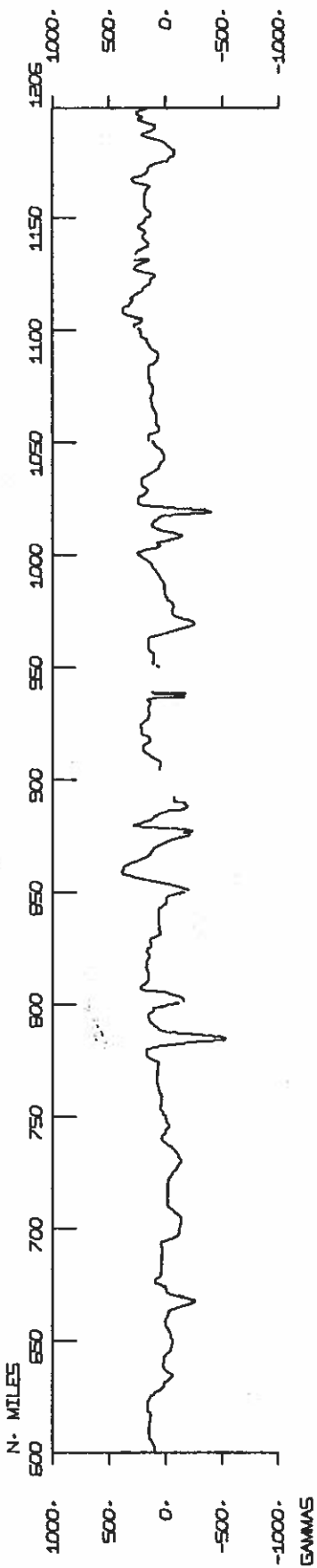
MERCATOR PROJECTION, SCALE= 0.312 IN/DEG LONGITUDE



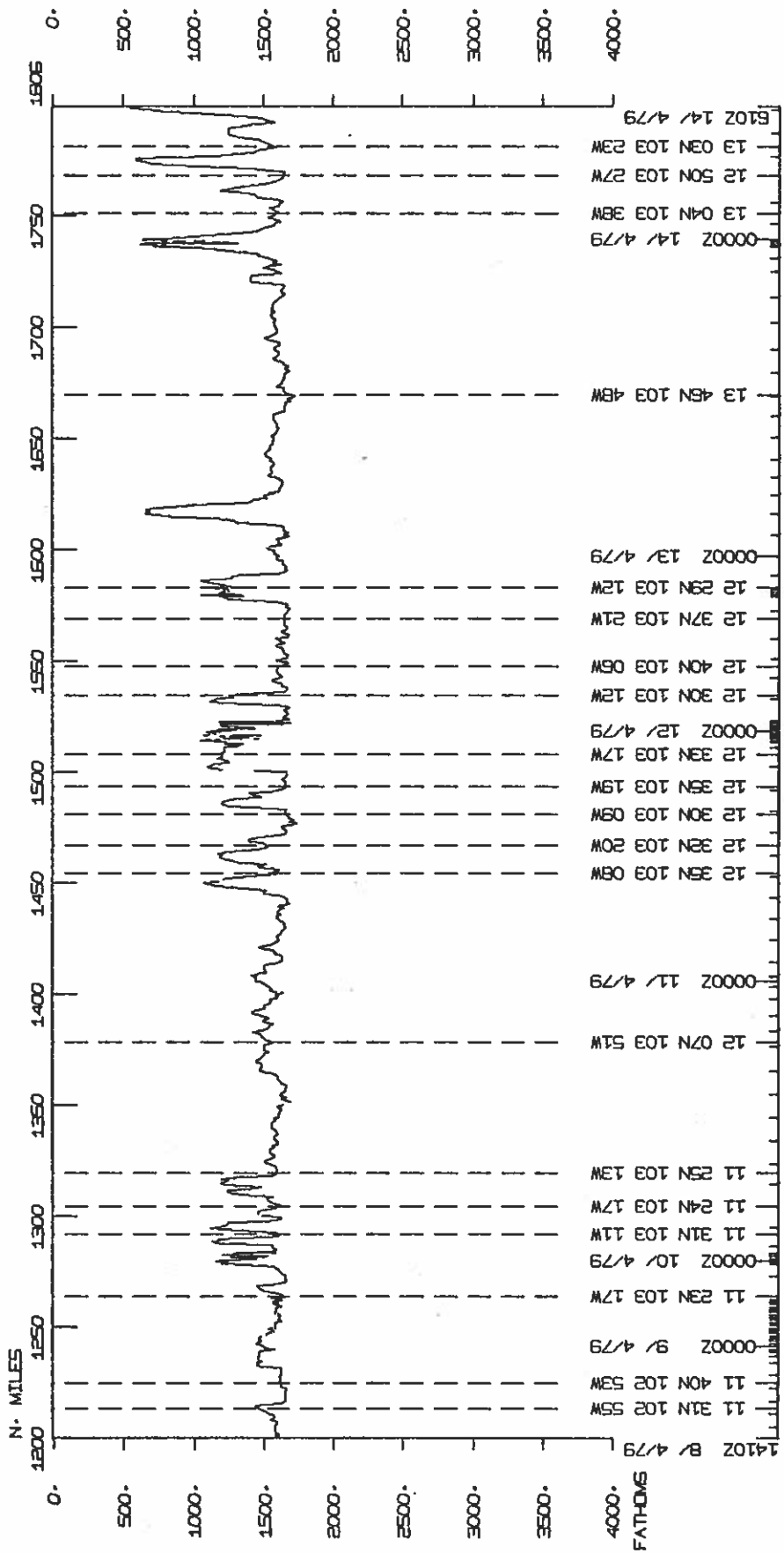
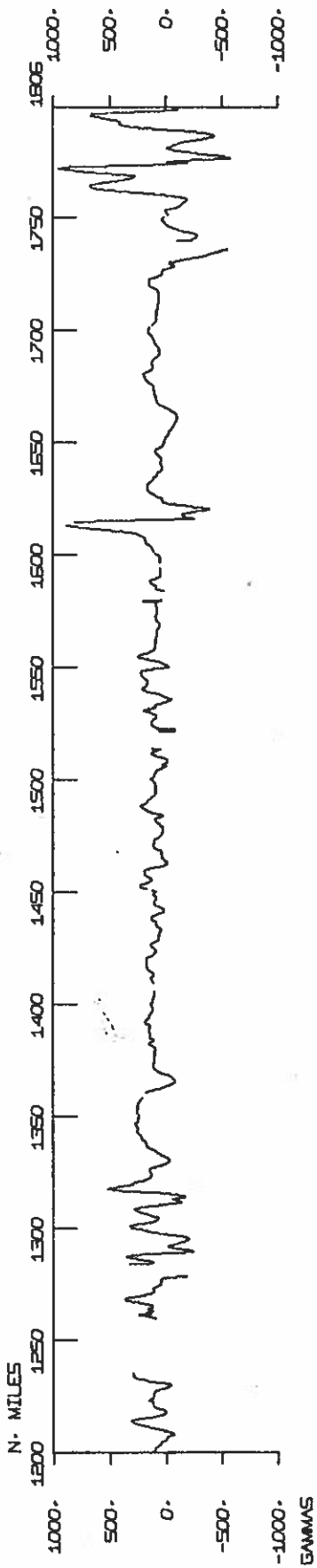
RSTHO3NH



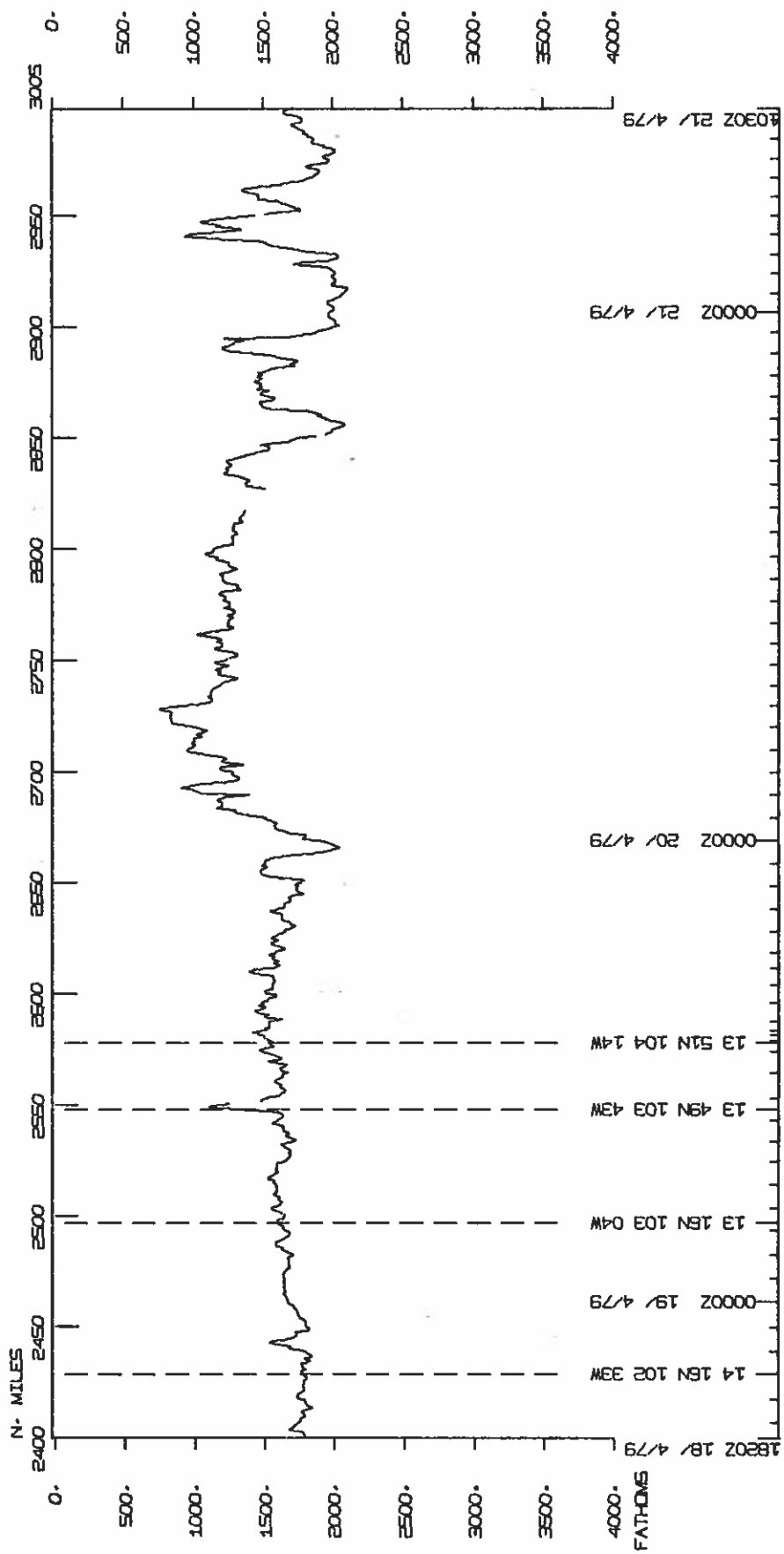
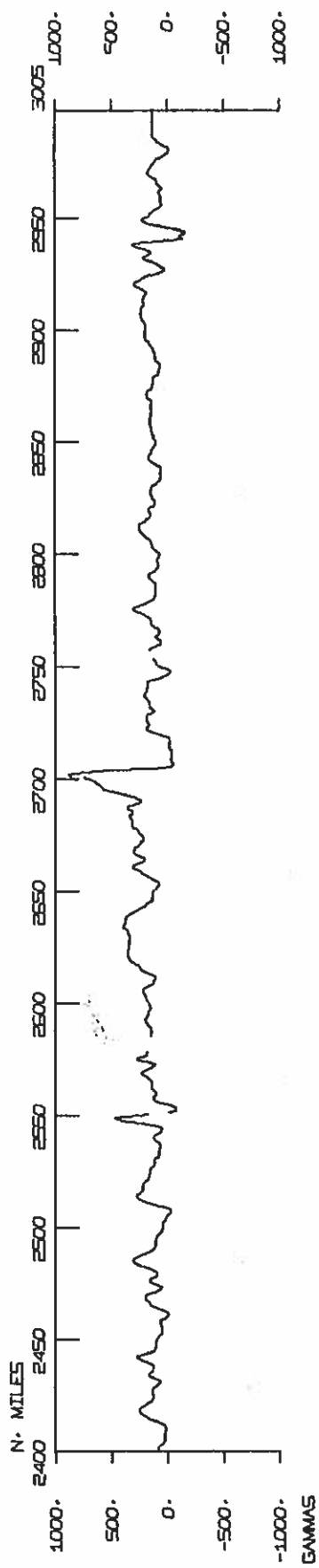
RSTHO3NH



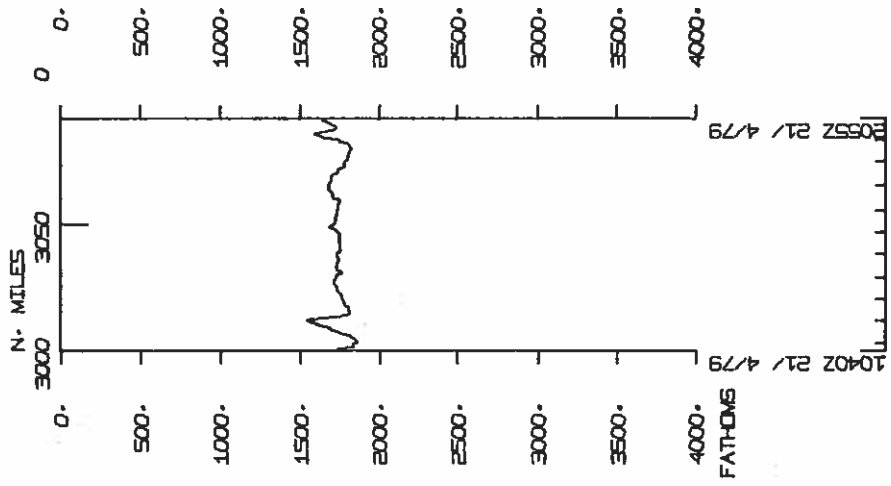
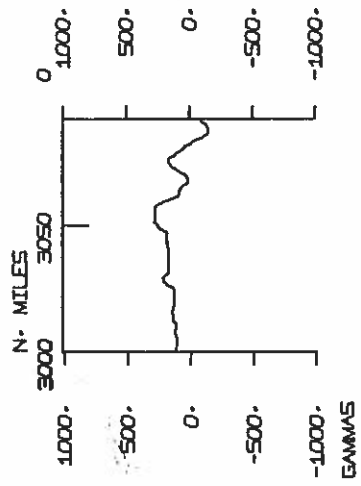
RSTHO3NH



RSTHO3NH



RSTHO3NH



1055Z 21/ 4/79

1040Z 21/ 4/79

14 JAN 80 PAGE 1

GMT D / M / Y TIME DATE	LOC TIME	LOC TZ	CODE SAMP	SAMPLE IDENT.	CODE DISP	LAT.	LONG.	LEG-SHIP CRUISE
/ / 000			RISETHREE	LEG 3 SAMPLE INDEX		00 00.	00 00.	RSTH03NH

*** PORTS ***

CB32 01/04/79			LGPT B	MAZATLAN, MEXICO		23 12. S	106 26. W	F RSTH03NH
2100 22/04/79			LGPT E	MAZATLAN, MEXICO		23 12. S	106 26. W	F RSTH03NH

PERSONNEL

*** NAME ***	*** TITLE ***	*** AFFILIATION ***
--------------	---------------	---------------------

1 BATIZA, RODY	CHIEF SCIENTIST	SCRIPPS INSTITUTION NON-EMPLOYEE - CONTACT D. UTTER (EXT.3675
2 OFSTRIKE, R.		SCRIPPS INSTITUTION NON-EMPLOYEE - CONTACT D. UTTER (EXT.3675
3 BUTCHER, N.		SCRIPPS INSTITUTION NON-EMPLOYEE - CONTACT D. UTTER (EXT.3675
4 THOMPSON, R.		SCRIPPS INSTITUTION NON-EMPLOYEE - CONTACT D. UTTER (EXT.3675
5 STURCHIO, N.		SCRIPPS INSTITUTION NON-EMPLOYEE - CONTACT D. UTTER (EXT.3675
6 CURTISS, B.		SCRIPPS INSTITUTION NON-EMPLOYEE - CONTACT D. UTTER (EXT.3675

*****WASHINGTON UNIVERSITY, ST. LOUIS, MISSOURI*****

7 COSSIO, J.		SCRIPPS INSTITUTION NON-EMPLOYEE - CONTACT D. UTTER (EXT.3675
8 AGUIRRE, J.		SCRIPPS INSTITUTION NON-EMPLOYEE - CONTACT D. UTTER (EXT.3675

*****UNIVERSIDAD DE SONORA, SONORA, MEXICO*****

9 PATTERSON, M.		UNIV. CALIF. BERKELEY
10 WILSON, R.	MARINE TECH	SCRIPPS INSTITUTION OF OCEANOGRAPHY, LA JOLLA CAL. 92093
11 HUBENKA, F.	AIRGUN TECH	SCRIPPS INSTITUTION OF OCEANOGRAPHY, LA JOLLA CAL. 92093

NOTES AN 'X' IN THE (B)EGIN/(F)ND COLUMN FOLLOWING THE SAMPLE CODE INDICATES NO SAMPLE OR DATA RECOVERED .
 A 'C' INDICATES CONTINUATION OF DATA COLLECTION FROM BEFORE THE BEGINNING OR AFTER THE END OF THIS LEG.
 (MOORED BOTTOM INSTRUMENTS, FOR EXAMPLE).
 THE NUMBER APPEARING IN THE COLUMNS BETWEEN THE SAMPLE IDENTIFIER AND THE DISPOSITION CODE, FOR MANY SAMPLE ENTRIES, IS THE WATER DEPTH IN CORRECTED METERS.

NUMBER OF SAMPLES OF CLASS 'TYPE' GOING TO DESTINATION 'DISP'

DISP	TYPE				TOTAL
	DP	LB	MG	PE	
GDC	I	7	1	2	I 10
SIO	I				2 I 2
SIX	I				8 I 8
UCB	I				1 I 1
TOTAL	I	7	1	2	11 I 21

SAMPLE 'TYPE' CODES USED ABOVE

DP = DEPTH
 LB = LOG BOOKS
 MG = MAGNETICS (TOWED VEHICLE, SURFACE, TOTAL FIELD)
 PE = PERSONNEL IN SCIENTIFIC PARTY

SAMPLE 'DISP' CODES USED ABOVE

GDC = GEOLOGICAL DATA CENTER -- S. SMITH (EXT. 2752)
 SIO = SCRIPPS INSTITUTION OF OCEANOGRAPHY, LA JOLLA, CAL. 92093
 SIX = SCRIPPS INSTITUTION NON-EMPLOYEE -(CONTACT DORCAS UTTER EXT. 2356)
 UCB = UNIV. CALIF. BERKELEY

GMT D / M / Y	LOC LOC	CODE	SAMPLE IDENT.	CODE	LAT.	LONG.	LEG-SHIP
TIME DATE	TIME TZ	SAMP		DISP			CRUISE

UNDERWAY DATA CURATOR - STUART M. SMITH (EXT.2752)

*** LOG BOOKS ***

0420	01/04/79		LBWU B UNDERWAY WATCH LOG	GDC 22	28.5N	106 37.0W	F RSTH03NH
0120	22/04/79		LBWU E UNDERWAY WATCH LOG	GDC 21	12.4N	106 51.1W	S RSTH03NH

*** FATHOGRAMS ***

0445	1/ 4/79		DPRT B PDR 12KHZ R-01	GDC 22	28.5N	106 37.0W	S RSTH03NH
1355	6/ 4/79		DPRT E PDR 12KHZ R-01	GDC 08	55.4N	104 29.5W	S RSTH03NH
1417	6/ 4/79		DPRT B PDR 12KHZ R-02	GDC 08	55.6N	104 29.5W	S RSTH03NH
2200	16/ 4/79		DPRT E PDR 12KHZ R-02	GDC 12	59.8N	100 46.4W	S RSTH03NH
2217	16/ 4/79		DPRT B PDR 12KHZ R-03	GDC 12	59.8N	100 45.0W	S RSTH03NH
0120	22/ 4/79		DPRT E PDR 12KHZ R-03	GDC 21	12.4N	106 51.1W	S RSTH03NH
0451	1/ 4/79		DPR3 B PDR 3.5KHZ R-01	GDC 22	28.5N	106 37.0W	S RSTH03NH
0451	2/ 4/79		DPR3 E PDR 3.5KHZ R-01	GDC 19	18.0N	107 56.4W	S RSTH03NH
0455	2/ 4/79		DPR3 B PDR 3.5KHZ R-02	GDC 19	17.3N	107 56.6W	S RSTH03NH
0324	5/ 4/79		DPR3 E PDR 3.5KHZ R-02	GDC 08	51.0N	103 53.2W	S RSTH03NH
2230	5/ 4/79		DPR3 B PDR 3.5KHZ R-03	GDC 08	50.5N	104 02.0W	S RSTH03NH
0640	8/ 4/79		DPR3 E PDR 3.5KHZ R-03	GDC 11	30.6N	103 31.5W	S RSTH03NH
0655	8/ 4/79		DPR3 B PDR 3.5KHZ R-04	GDC 11	30.8N	103 29.1W	S RSTH03NH
2210	8/ 4/79		DPR3 E PDR 3.5KHZ R-04	GDC 11	33.1N	102 54.7W	S RSTH03NH

*** MAGNETOMETER ***

0504	1/ 4/79		MGRA B MAGNETICS R-01	GDC 22	28.5N	106 37.0W	S RSTH03NH
1205	15/ 4/79		MGRA E MAGNETICS R-01	GDC 13	22.8N	102 32.9W	S RSTH03NH
2329	15/ 4/79		MGRA B MAGNETICS R-02	GDC 13	23.2N	102 30.4W	S RSTH03NH
0120	22/ 4/79		MGRA E MAGNETICS R-02	GDC 21	12.4N	106 51.1W	S RSTH03NH

9900

END SAMPLE INDEX

RSTH03NH