

***Report and Index of
Underway Marine Geophysical Data***

Drift Expedition

Leg 7

(DRFT07RR)

R/V Revelle

(Issued June 2002)

Ports:

Easter Island, Chile (16 December 2001)
to
Lyttleton, New Zealand (2 January 2002)

Chief Scientist: Erika Goetze
Scripps Institution of Oceanography
egoetze@ucsd.edu

Computer Tech – Dan Jacobson

Post-Cruise processing and report preparation by the
Shipboard Technical Support Group,
Scripps Institution of Oceanography
La Jolla, CA 92093-0223

NOTE: *This is an index of underway geophysical data edited and processed after the completion of the cruise leg and is intended primarily for informal use within the institution. This document is not to be reproduced or distributed outside Scripps without prior approval of the chief scientist or Shipboard Technical Support, Scripps Institution of Oceanography, La Jolla, California 92093-0223.*

STS Cruise ID# 297

**Report and Index of Navigation
and Underway Geophysical Data**

Processed by the Shipboard Technical Support Group
Scripps Institution of Oceanography

Contents:

Index Chart – gives track of cruise leg, dates, ports, and mileage of each type of data collected.

Track Charts– annotated with dates and hour ticks

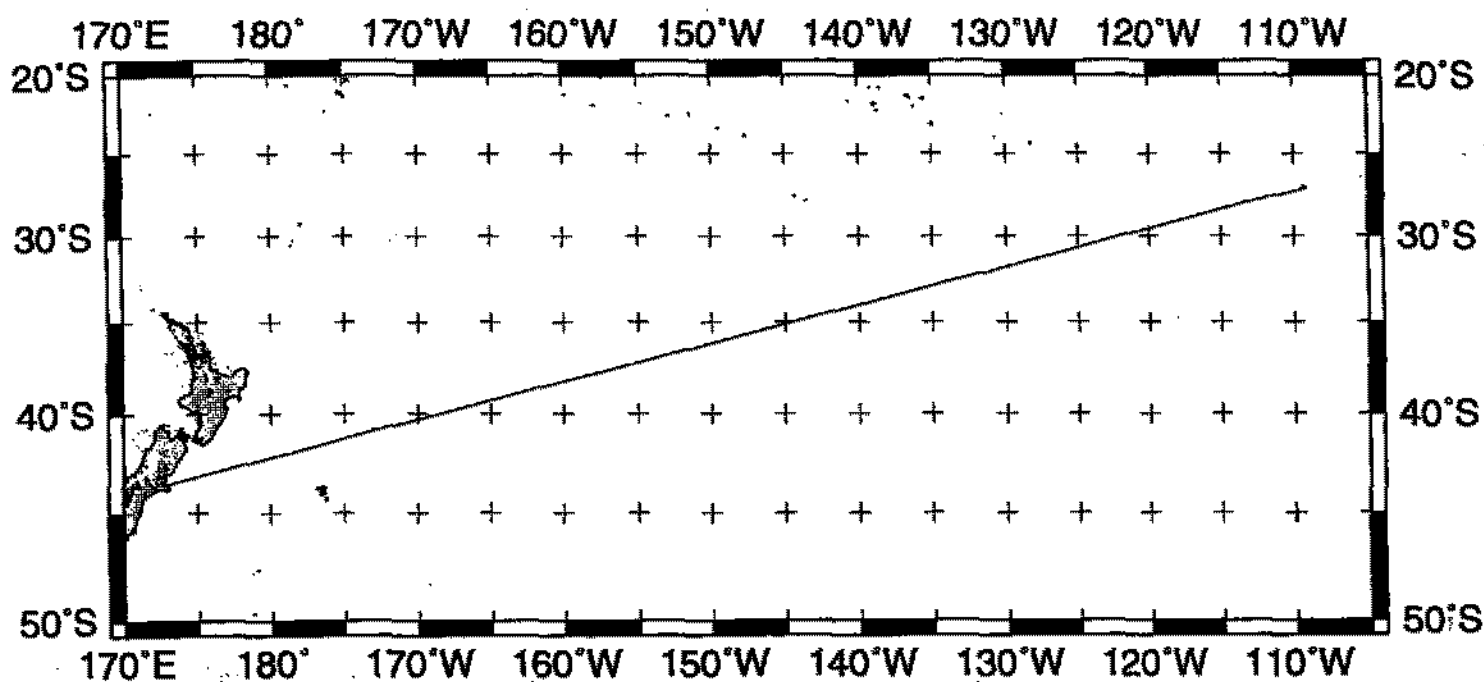
Profiles – depth, magnetic and gravity free air anomaly vs. distance. (Sections of track with seismic reflection data have a wide black line along the bottom of the profile.)

Sample Index – list of begin/end times and positions of all underway records as well as samples and measurements from other disciplines collected on the leg.

NOTE:

For information on the availability of this current digital data as well as archived digital data contact Stephen P. Miller, Geological Data Center, Scripps Institution of Oceanography, La Jolla, California 92093-0220 Phone: (858)534-1898, internet email: spmiller@ucsd.edu; or his Website: <http://SIOExplorer@ucsd.edu>

Rev 6/2001



DRIFT EXPEDITION LEG 7 (DRFT07RR)

CHIEF SCIENTIST: Erika Goetze, Scripps Institution

PORTS: Easter Island, Chile - Lyttleton, New Zealand

DATES: 16 December 2001 - 2 January 2002

SHIP: R/V Revelle

TOTAL MILEAGE OF UNDERWAY DATA COLLECTED

Cruise-3986 miles

Magnetics-none collected

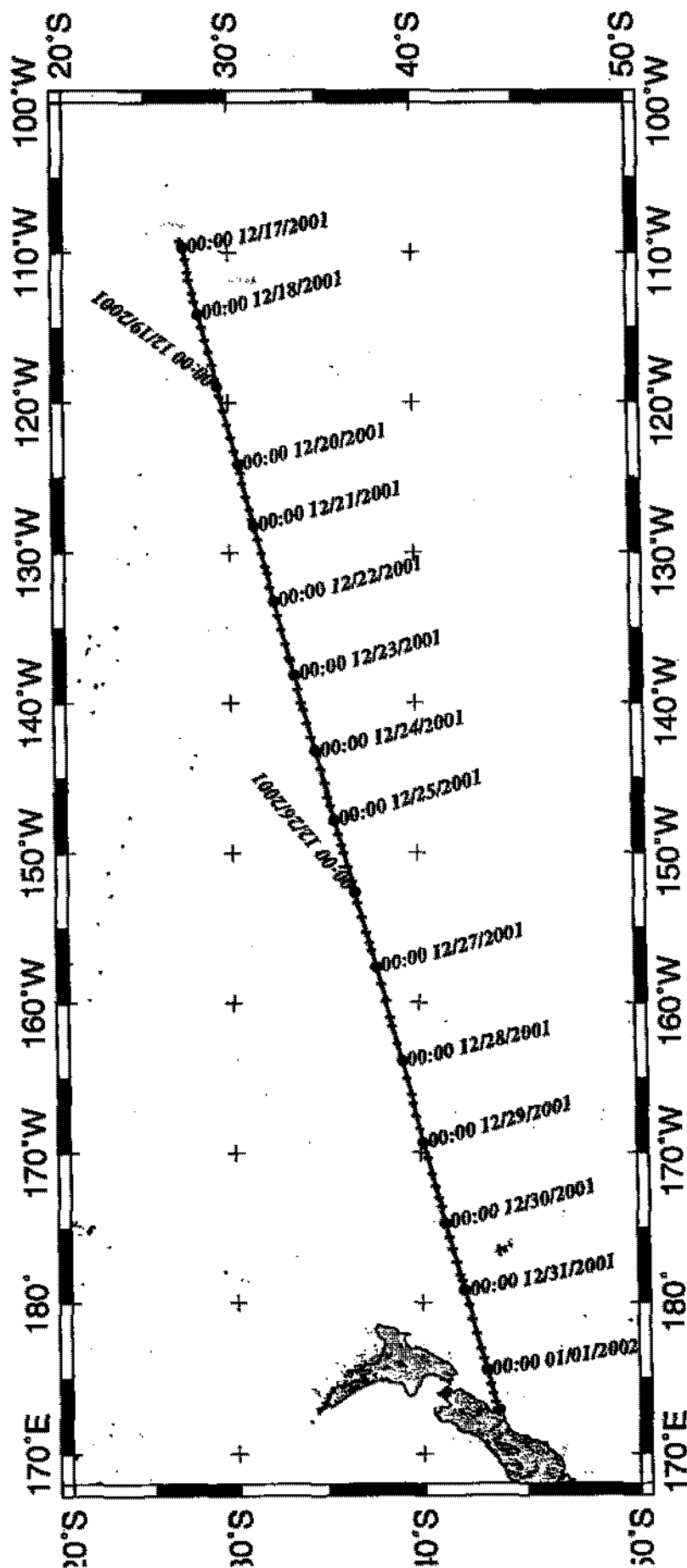
Bathymetry-3306 miles

Seismic Reflection-none collected

Multibeam-3306 miles

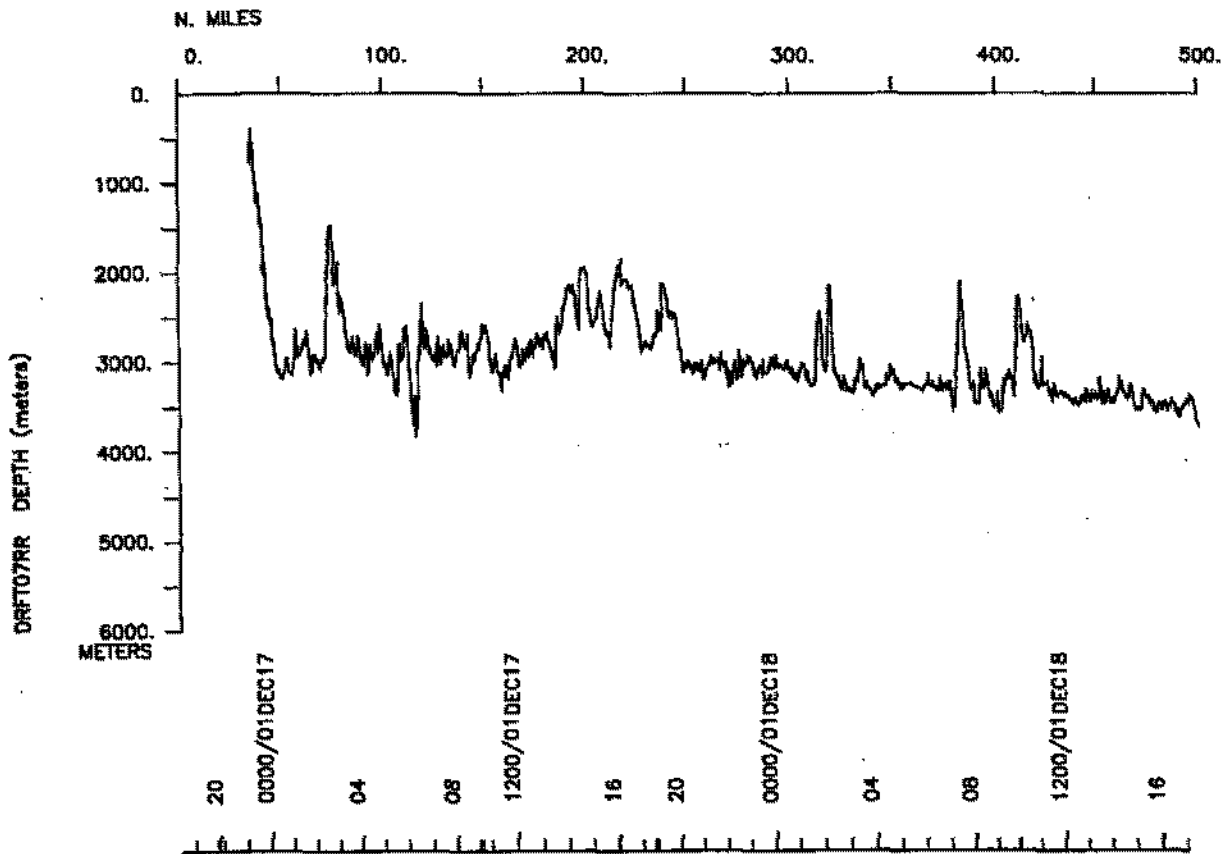
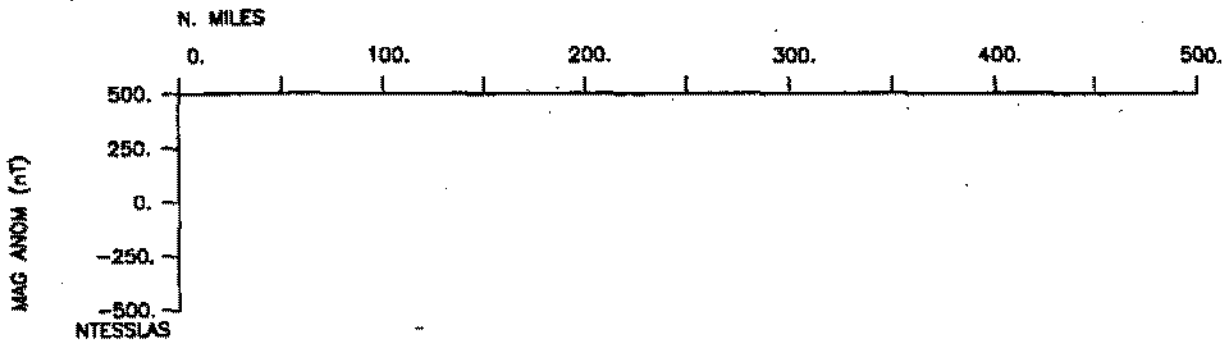
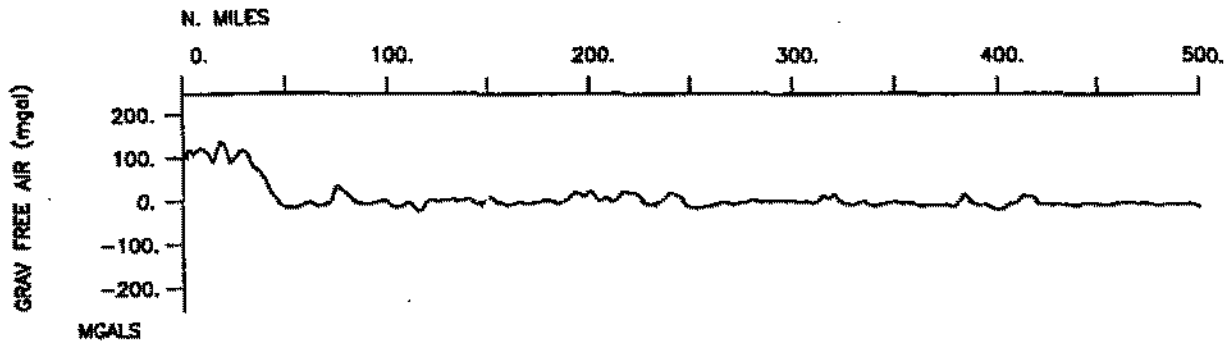
Gravity-3961 miles

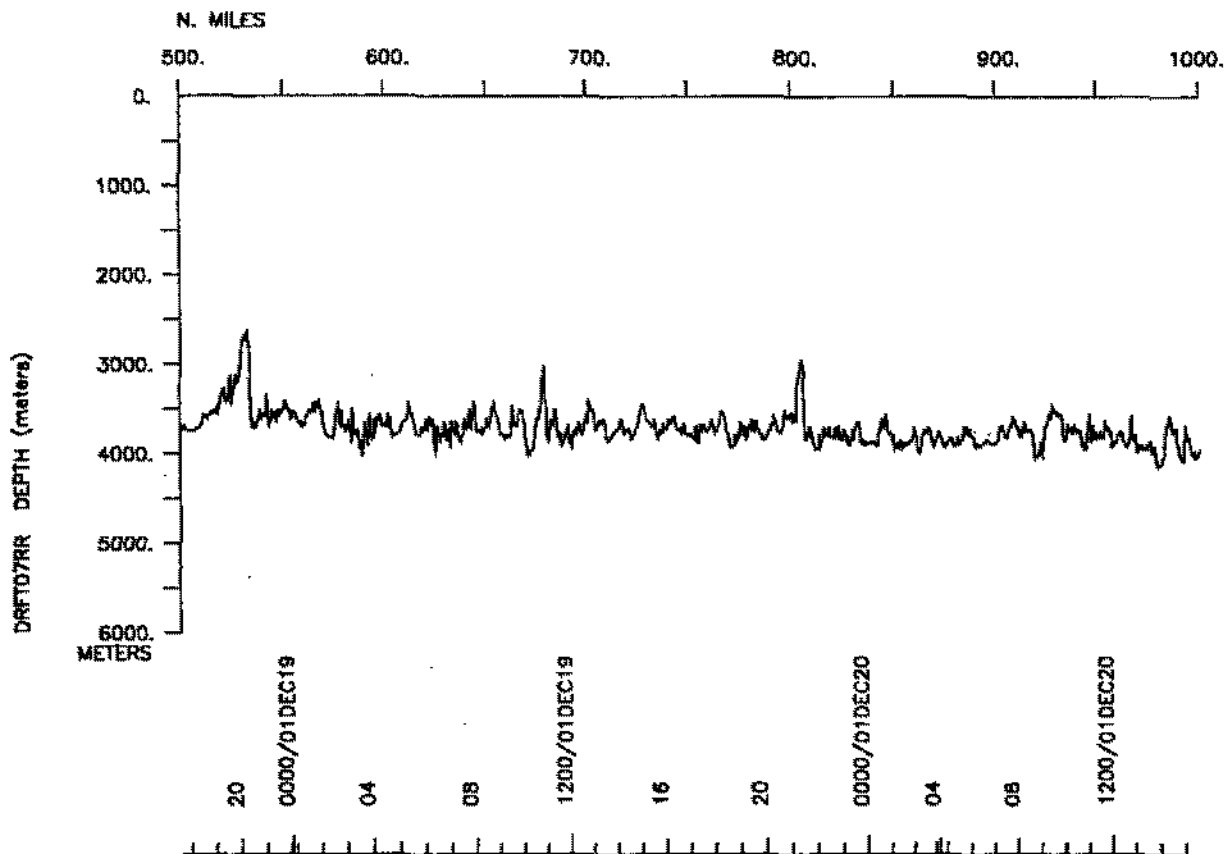
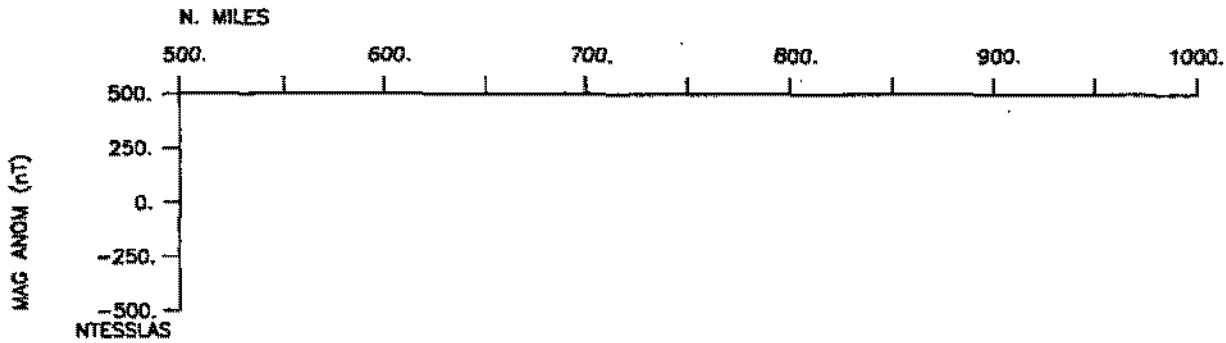
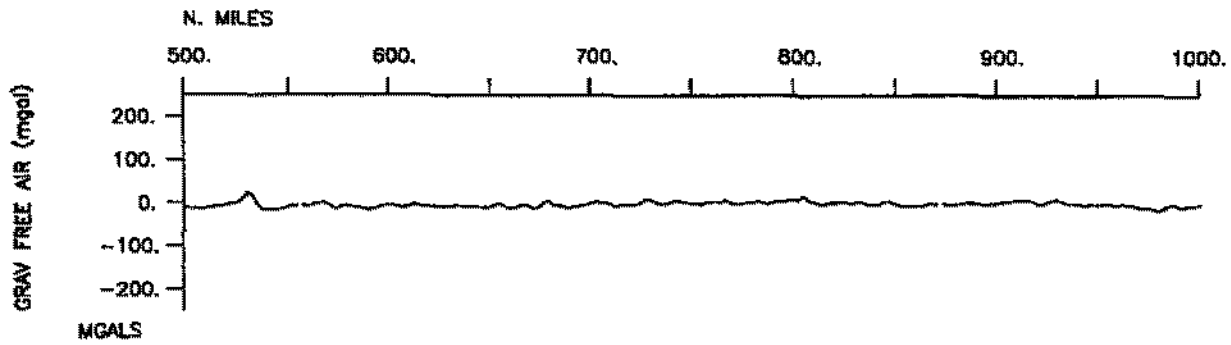
DRFT07RR

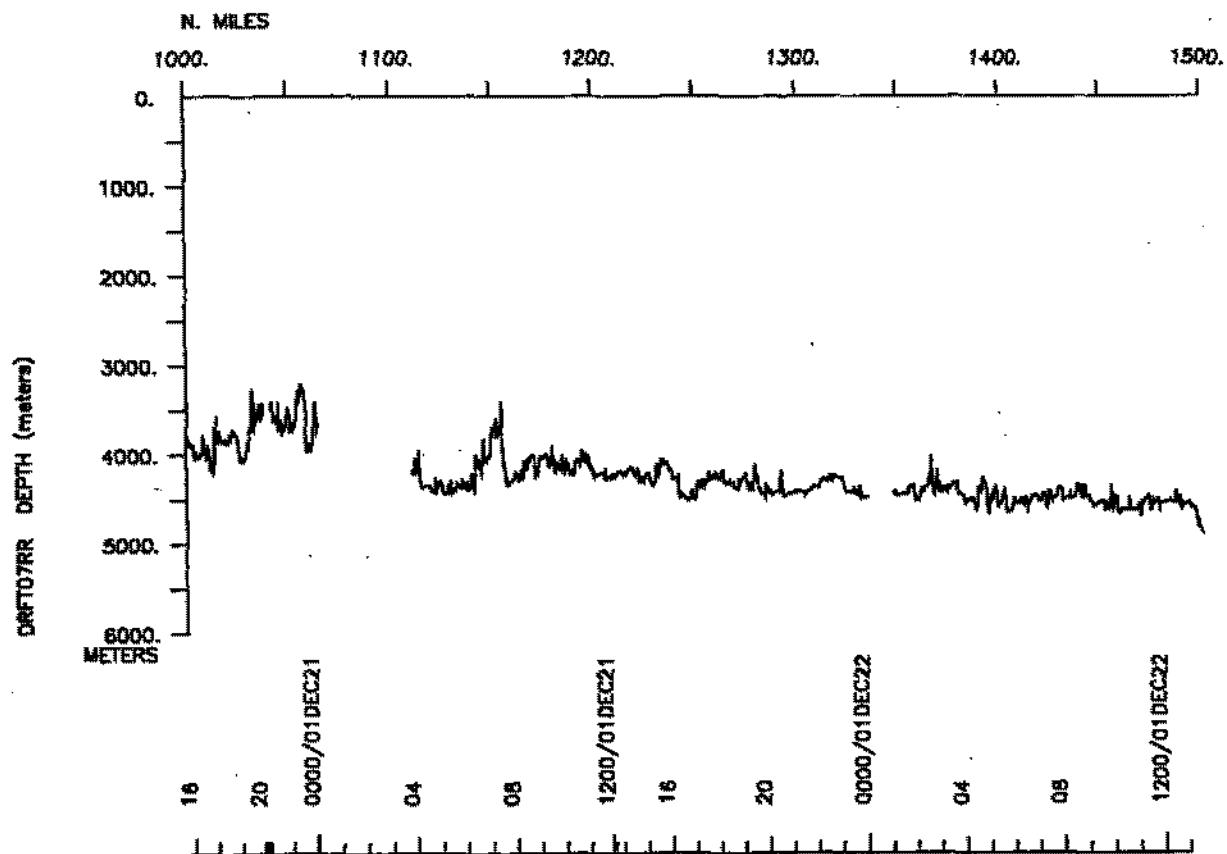
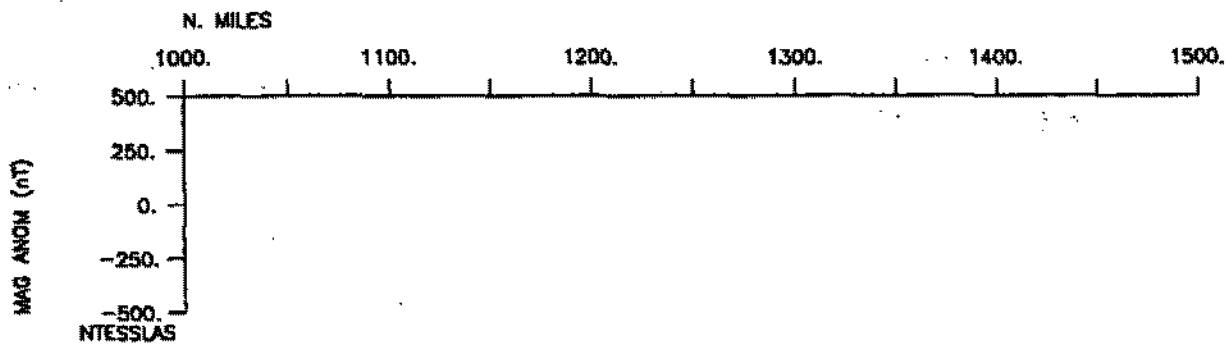
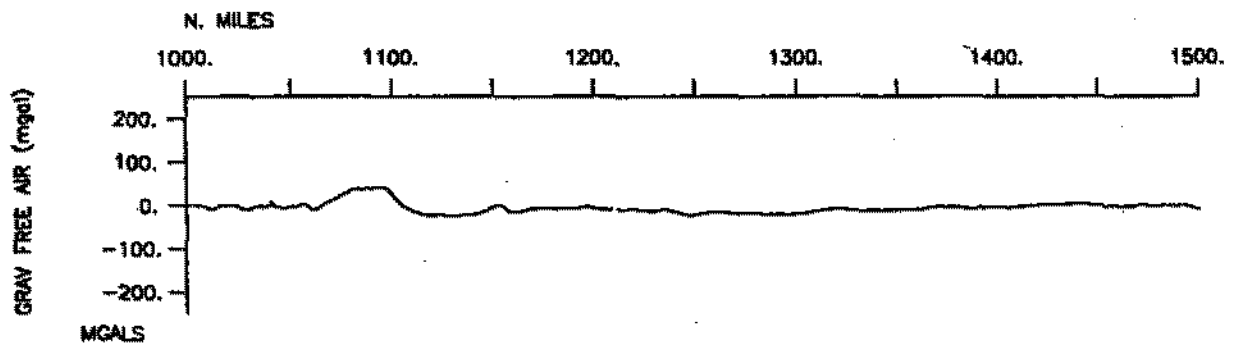


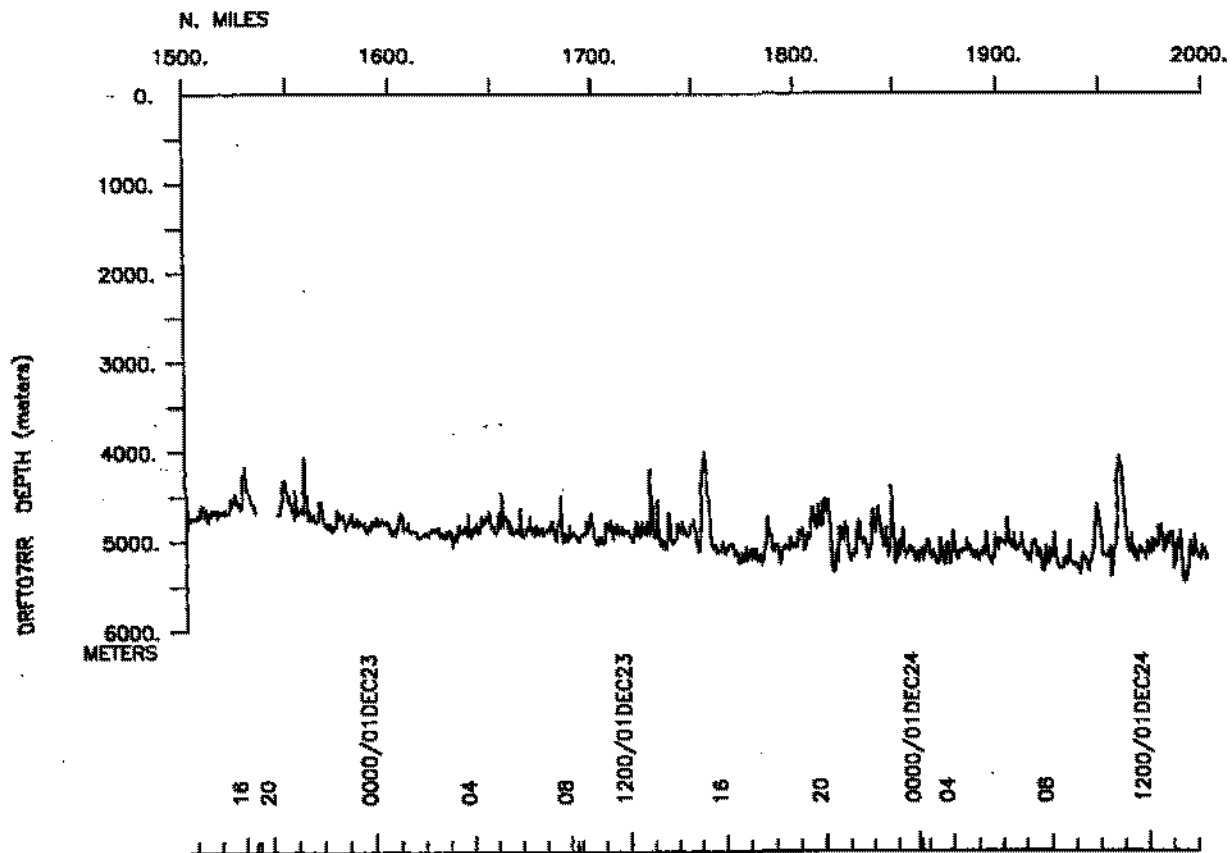
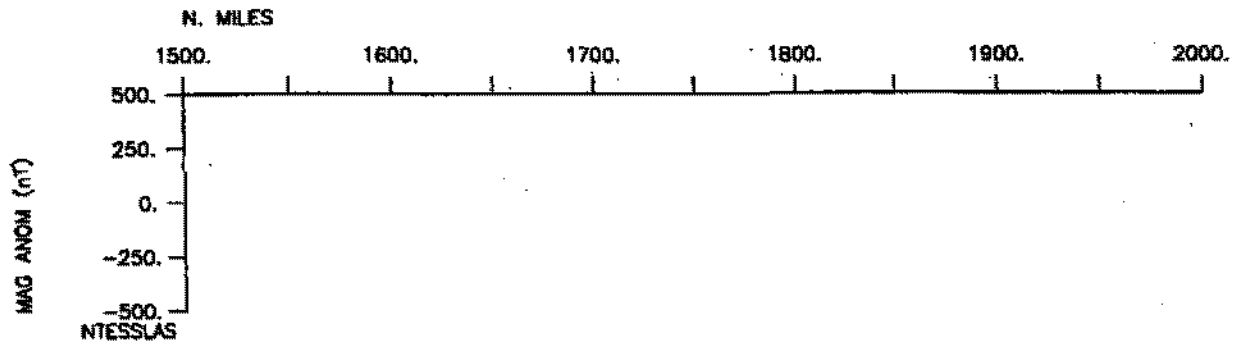
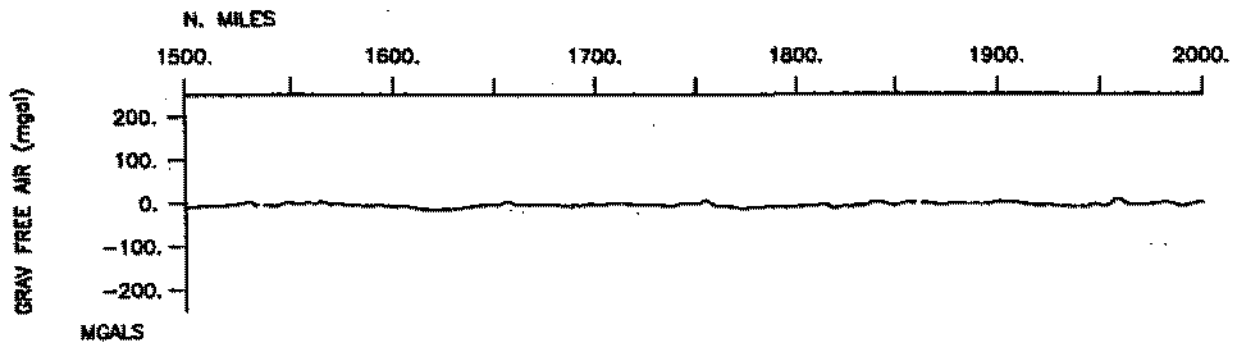
18 2002 Jun 18 09:17:42 :Easter Island - Lyttleton, New Zealand 16 Dec 2001 - 02 January 2002:

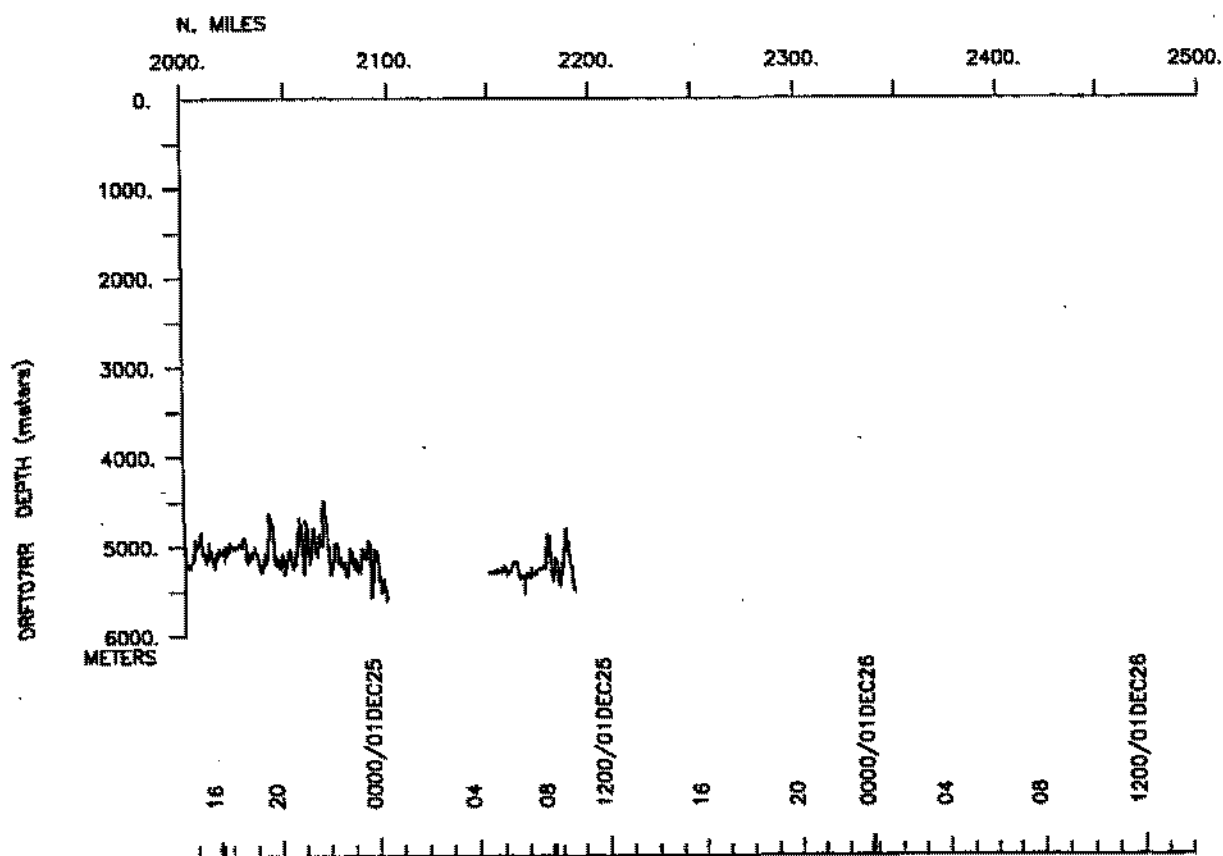
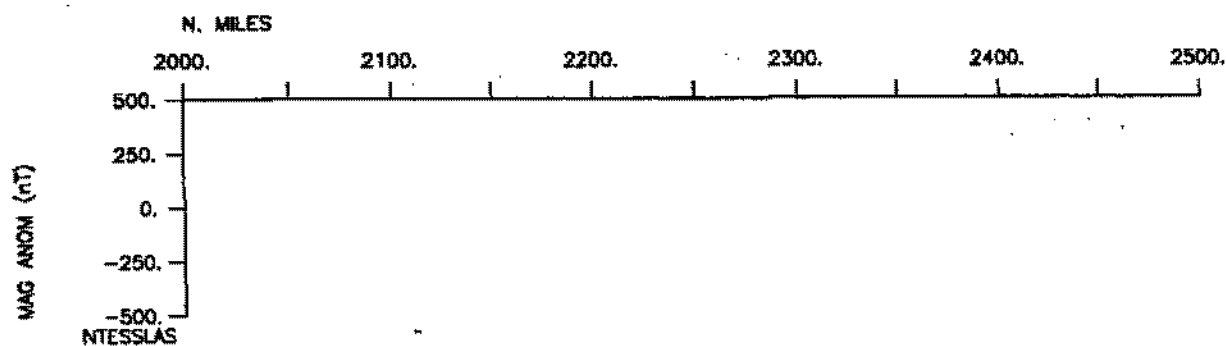
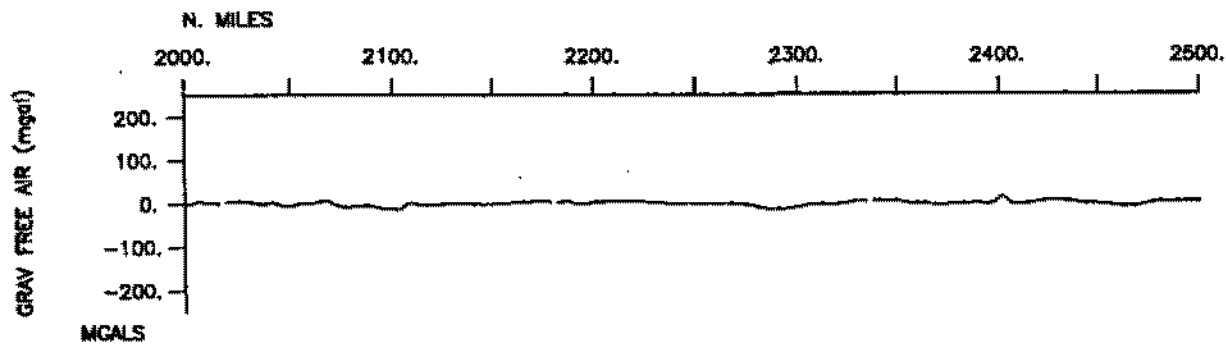
18 2002 Jun 18 09:17:42

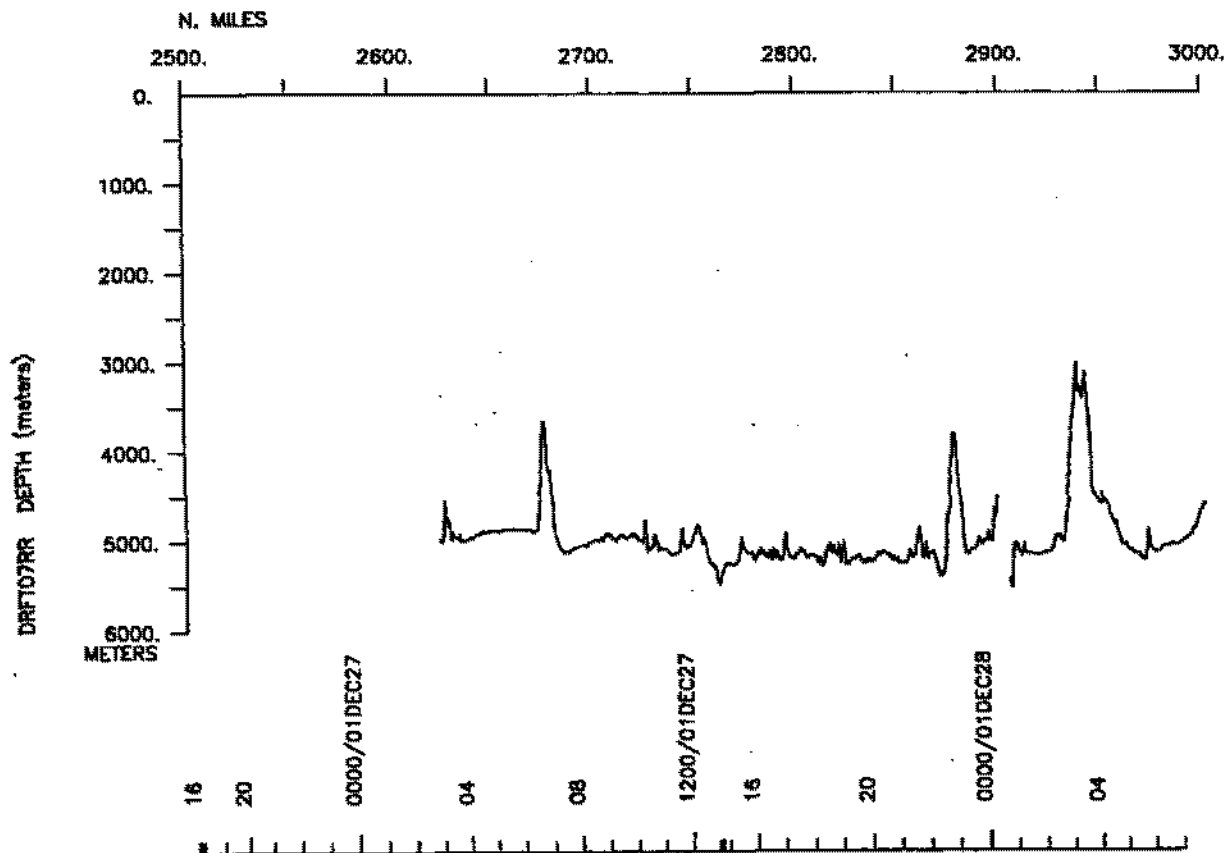
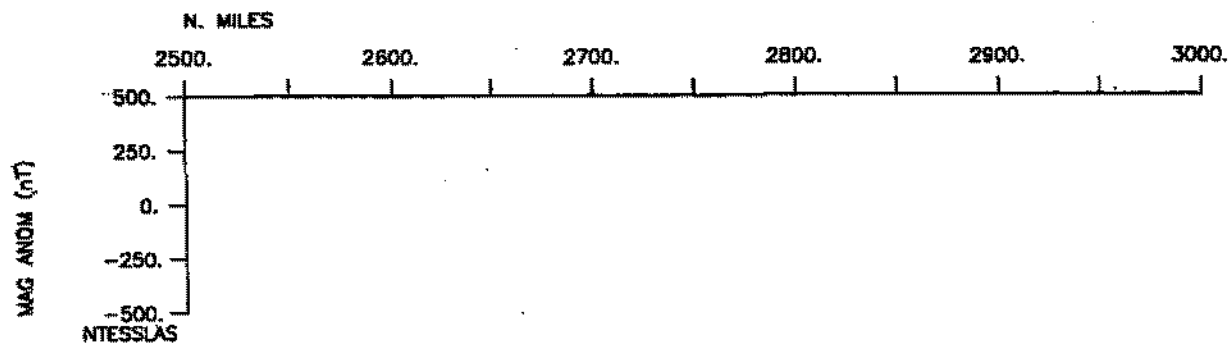
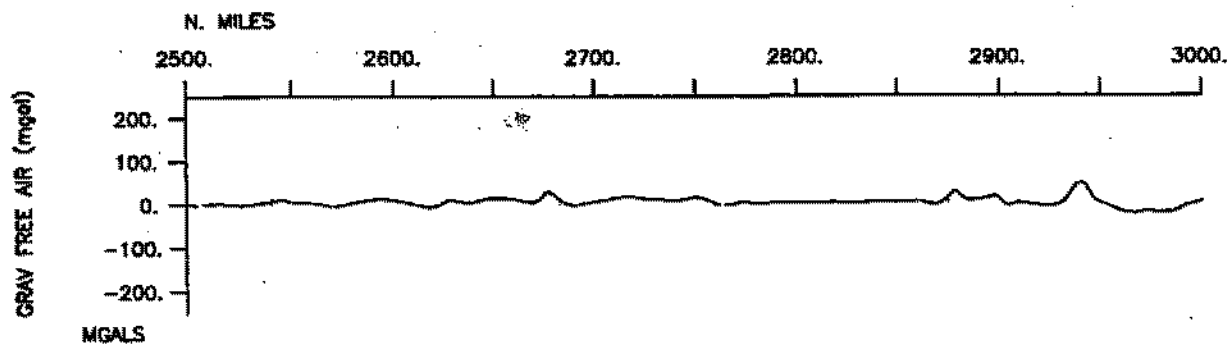


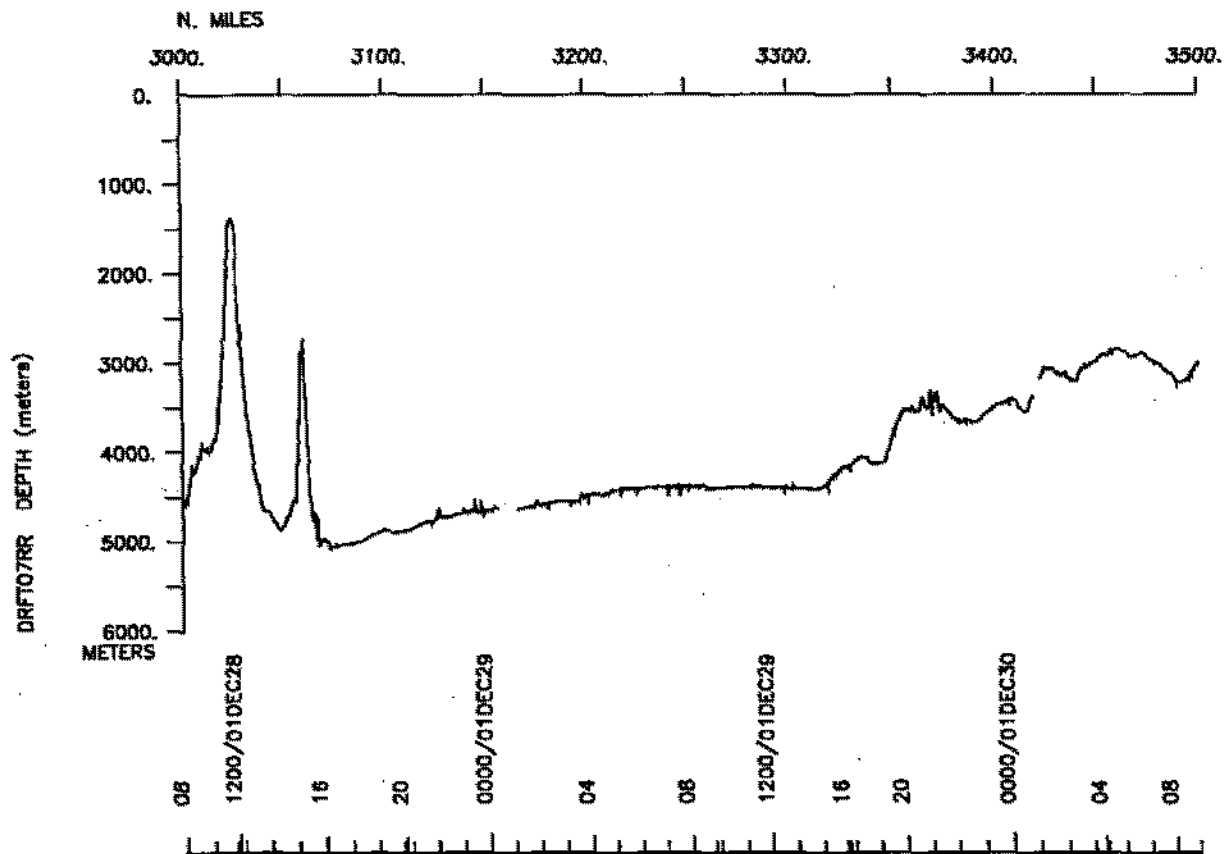
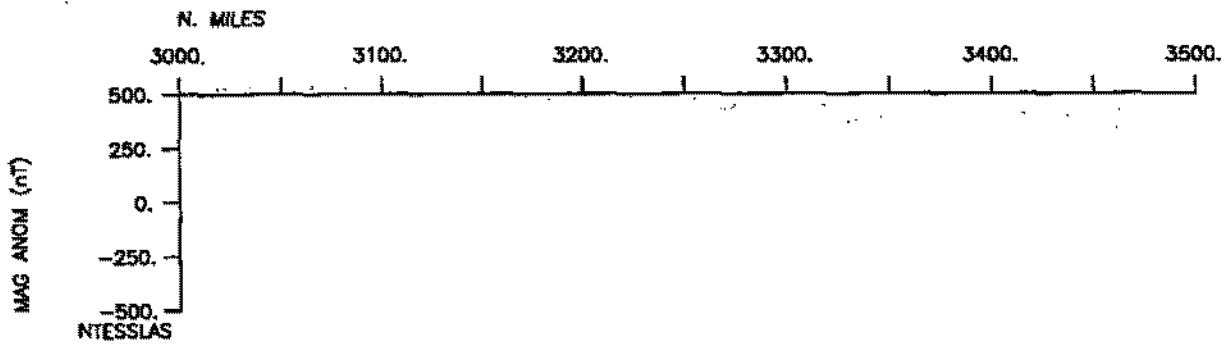
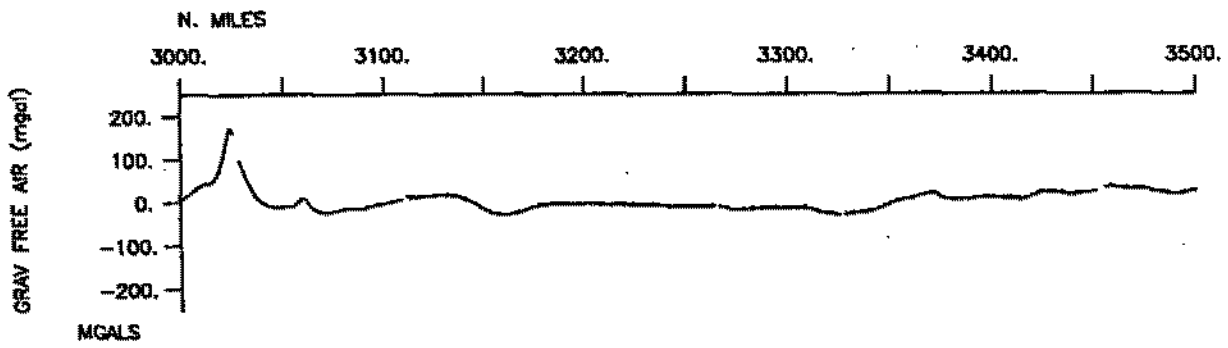


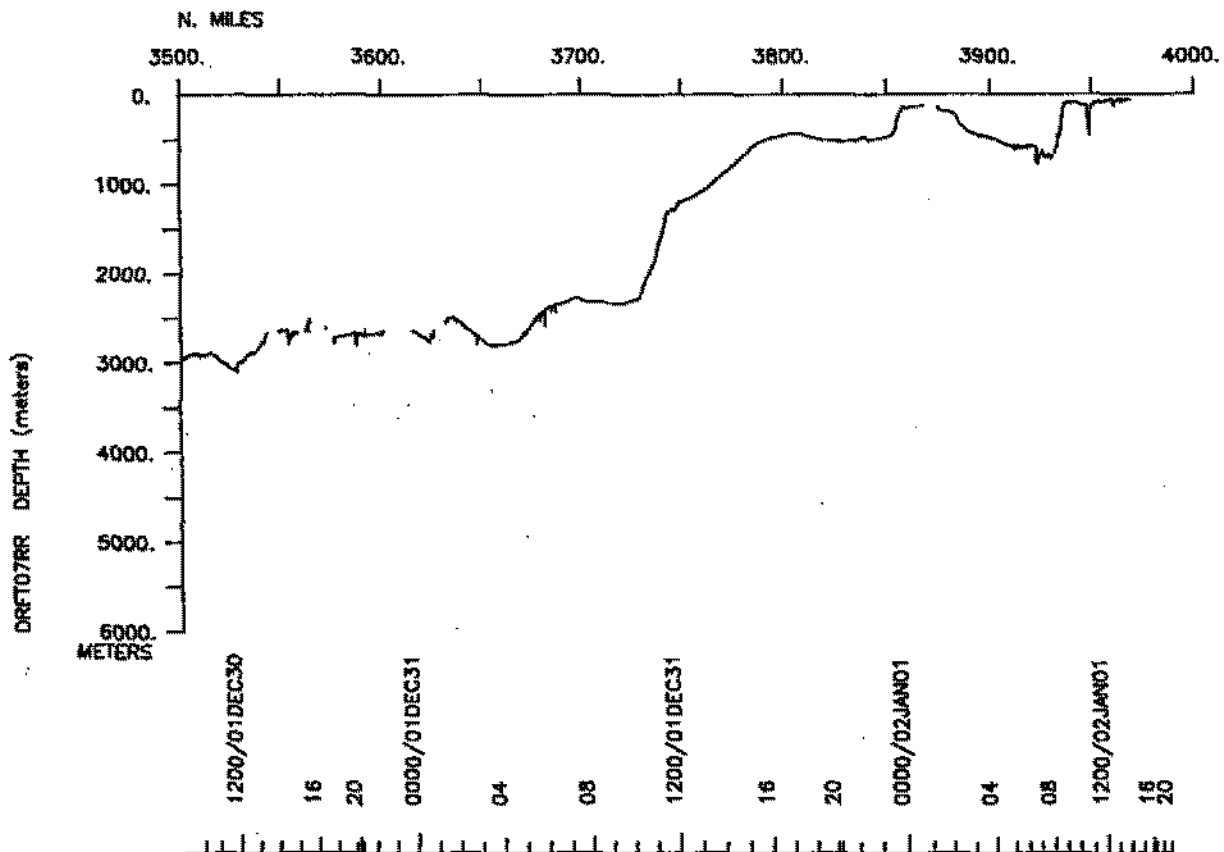
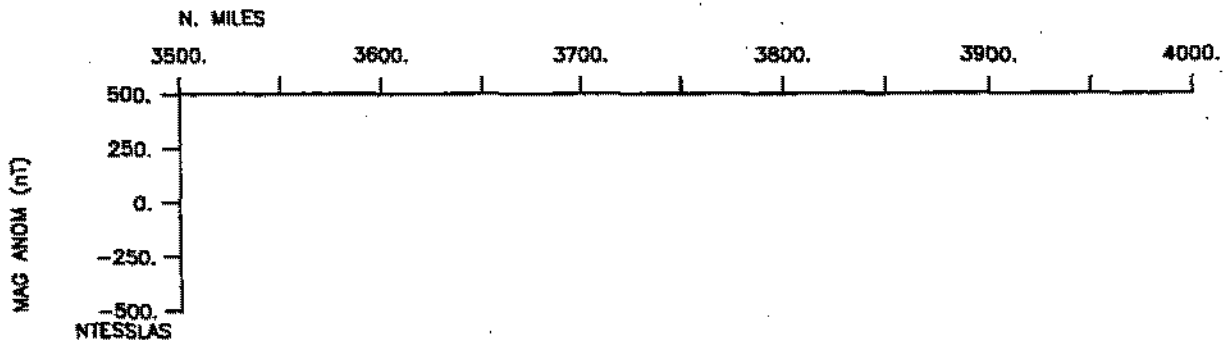
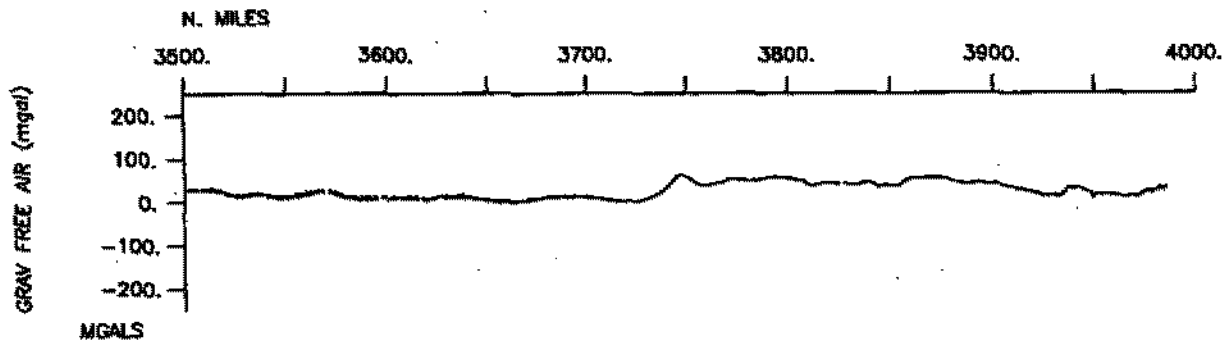












S.I.O. Sample Index

Drift Expedition

Leg 7

(DRFT07RR)

R/V Revelle

(Issued June 2002)

PORTS:

Easter Island, Chile (16 December 2001)

to

Lyttleton, New Zealand (2 January 2002)

Chief Scientist: Erika Goetze

Scripps Institution of Oceanography

The Sample Index is a first level interdisciplinary listing of time, position, sample identification and disposition of all samples, records and measurements collected on this cruise leg. The index data are encoded at sea by the resident marine technician and processed on shore by the S.I.O. Shipboard Technical Support shortly after the completion of the cruise leg.

Positions are interpolated on the basis of sample time by comparison to a single, edited navigation file. Samples beginning at one time and position and ending at another are entered on two consecutive lines. Disposition and sample type are represented by three and four character codes to permit future computer searches on these parameters. (Listings defining these codes are available from the Shipboard Technical Support Group.)

STS Cruise ID# 297

**** Ports ***

1614	161201	LCST B Easter Island	27-09.00S 109-27.00W f	DRFT07RR
1838	020102	LCST B Lyttleton, New Zealand	43-36.00S 172-43.00E f	DRFT07RR

**** Personnel ***

#	*****NAME*****	*****TITLE*****	*****AFFILIATION*****	**CRID**
PECS SIO	Goetze, E.	Chief Scientist	Scripps Institution	DRFT07RR
PESP WHOI	DeVargas, C.	Scientist	Woods Hole	DRFT07RR
PESP SIX	Dzuadurski, G.	Technician	Non-Scripps Employee	DRFT07RR
PECT STS	Jacobson, D.	Computer Tech	Scripps Institution	DRFT07RR
PESP STS	Schmitt, J.	Technician	Scripps Institution	DRFT07RR
PESP VOL	Desjardins, E.	Volunteer	Non-Scripps Employee	DRFT07RR

**** NOTES ***

#An 'X' in the (B)egin/(E)nd column following the sample code indicates no sample or data recovered. A 'C' indicates continuation of data collection #from before the beginning or after the end of a particular leg, (moored #bottom instruments, for example.) The number appearing in the columns #between the sample identifier and the disposition code, for many sample #entries, is the water depth in corrected meters.

#GMT DMMYY	SAMP B SAMPLE	DISP	p CRUISE
#TIME DATE TZ CODE E IDENTIFIER	CODE LATITUDE	LONGITUDE	c LEG-SHIP

**** Underway Data Curator - Shipboard Technical Support Group ext.41899 ***
 **** Digital Data Curator - Geological Data Center, S.P. Miller, ext.41898 ***

**** MultiBeam Data (SIMRAD) ***

2030	181201	0 MBSI B multibeam data	GDC	29-15.55S 118-37.48W g	DRFT07RR
0045	020102	0 MBSI E multibeam data	GDC	43-36.39S 172-43.18E g	DRFT07RR

**** Digital Gravity ***

1614	161201	0 GVDD B digital gravity	GDC	27-08.55S 109-26.24W g	DRFT07RR
1837	020102	0 GVDD B digital gravity	GDC	43-36.39S 172-43.18E g	DRFT07RR

**** Integrated Meteorological Acquisition System ***

1614	161201	0 IMET B weather measurements	GDC	27-08.55S 109-26.24W g	DRFT07RR
1837	020102	0 IMET B weather measurements	GDC	43-36.39S 172-43.18E g	DRFT07RR

**** Acoustic Doppler Current Profiler ***

1614	161201	0 ADCP B current measurements	GDC	27-08.55S 109-26.24W g	DRFT07RR
1837	020102	0 ADCP E current measurements	GDC	43-36.39S 172-43.18E g	DRFT07RR

#GMT	DDMMYY	SAMP	B	SAMPLE	DISP				p	CRUISE
#TIME	DATE	TZ	CODE	E IDENTIFIER	CODE	LATITUDE	LONGITUDE		c	LEG-SHIP
*** Conductivity, Temperature, Depth ***										
2203	181201	0	TDCT	B CTD #1	800M SIO	29-20.15S	118-57.19W	g		DRFT07RR
2311	181201	0	TDCT	E CTD #1	SIO	29-20.16S	118-57.19W	g		DRFT07RR
1910	201201	0	TDCT	B CTD #2	SIO	31-20.98S	127-50.60W	g		DRFT07RR
2011	201201	0	TDCT	E CTD #2	SIO	31-20.98S	127-50.60W	g		DRFT07RR
1632	221201	0	TDCT	B CTD #3	800M SIO	33-23.67S	137-07.91W	g		DRFT07RR
1732	221201	0	TDCT	E CTD #3	SIO	33-23.67S	137-07.91W	g		DRFT07RR
0000	241201	0	TDCT	B CTD #4	800M SIO	34-44.16S	143-16.50W	g		DRFT07RR
0054	241201	0	TDCT	E CTD #4	SIO	34-44.16S	143-16.50W	g		DRFT07RR
0704	251201	0	TDCT	B CTD #5	800M SIO	36-04.62S	149-28.72W	g		DRFT07RR
0759	251201	0	TDCT	E CTD #5	SIO	36-04.62S	149-28.72W	g		DRFT07RR
1518	261201	0	TDCT	X CTD #6	SIO	37-27.08S	156-00.22W	g		DRFT07RR
0959	281201	0	TDCT	B CTD #7	SIO	39-37.67S	166-41.29W	g		DRFT07RR
1049	281201	0	TDCT	E CTD #7	SIO	39-37.66S	166-41.30W	g		DRFT07RR
0904	291201	0	TDCT	B CTD #8	SIO	40-36.38S	171-38.94W	g		DRFT07RR
0930	291201	0	TDCT	E CTD #8	SIO	40-36.41S	171-38.92W	g		DRFT07RR
1504	301201	0	TDCT	B CTD Station #17	SIO	41-51.11S	177-58.06W	g		DRFT07RR
1555	301201	0	TDCT	E CTD #17	SIO	41-52.93S	178-08.74W	g		DRFT07RR
1812	301201	0	TDCT	B CTD #9	SIO	41-57.80S	178-33.78W	g		DRFT07RR
1905	301201	0	TDCT	E CTD #9	SIO	41-57.87S	178-33.75W	g		DRFT07RR
1904	311201	0	TDCT	B CTD #10	SIO	42-57.25S	176-16.40E	g		DRFT07RR
1948	311201	0	TDCT	E CTD #10	SIO	42-57.26S	176-16.39E	g		DRFT07RR
*** Bongo Tows ***										
0915	171201	0	ONBG	B Bongo Tow #1	SIO	27-40.75S	111-33.11W	g		DRFT07RR
1033	171201	0	ONBG	E Bongo Tow #1	SIO	27-39.05S	111-33.91W	g		DRFT07RR
1736	171201	0	ONBG	B Bongo tow #2	SIO	27-59.73S	113-05.09W	g		DRFT07RR
1852	171201	0	ONBG	E Bongo tow #2	SIO	27-58.43S	113-05.64W	g		DRFT07RR
2320	181201	0	ONBG	B Bongo Tow #3	SIO	29-20.16S	118-57.19W	g		DRFT07RR
0042	191201	0	ONBG	E Bongo Tow #3	SIO	29-21.03S	118-55.90W	g		DRFT07RR
0305	201201	0	ONBG	B Bongo Tow #4	SIO	30-39.66S	124-46.66W	g		DRFT07RR
0431	201201	0	ONBG	E Bongo Tow #4	SIO	30-39.75S	124-44.10W	g		DRFT07RR
2021	201201	0	ONBG	B Bongo Tow #5	SIO	31-21.02S	127-50.54W	g		DRFT07RR
2154	201201	0	ONBG	E Bongo Tow #5	SIO	31-22.31S	127-48.17W	g		DRFT07RR
1200	211201	0	ONBG	B Bongo Tow #6	SIO	32-02.79S	130-59.34W	g		DRFT07RR
1332	211201	0	ONBG	E Bongo Tow #6	SIO	32-04.00S	130-56.98W	g		DRFT07RR
1750	221201	0	ONBG	B Bongo Tow #7	SIO	33-23.68S	137-07.78W	g		DRFT07RR
1922	221201	0	ONBG	E Bongo Tow #7	SIO	33-23.66S	137-05.51W	g		DRFT07RR
0816	231201	0	ONBG	B Bongo Tow #8	SIO	34-02.41S	140-03.57W	g		DRFT07RR
0948	231201	0	ONBG	E Bongo Tow #8	SIO	34-01.20S	140-01.23W	g		DRFT07RR
0106	241201	0	ONBG	B Bongo Tow #9	SIO	34-44.07S	143-16.31W	g		DRFT07RR
0236	241201	0	ONBG	E Bongo Tow #9	SIO	34-42.66S	143-14.73W	g		DRFT07RR

#GMT	DDMMYY	SAMP	B	SAMPLE	DISP				p	CRUISE
#TIME	DATE	TZ	CODE	E IDENTIFIER	CODE	LATITUDE	LONGITUDE		c	LEG-SHIP
1600	241201	0	ONBG	B Bongo Tow #10	SIO	35-23.62S	146-17.73W	g		DRFT07RR
1730	241201	0	ONBG	E Bongo tow #10	SIO	35-21.93S	146-18.45W	g		DRFT07RR
0810	251201	0	ONBG	B Bongo tow #11	SIO	36-04.58S	149-28.80W	g		DRFT07RR
0942	251201	0	ONBG	E Bongo Tow #11	SIO	36-03.79S	149-30.93W	g		DRFT07RR
2311	251201	0	ONBG	B Bongo Tow #12	SIO	36-44.07S	152-35.23W	g		DRFT07RR
0040	261201	0	ONBG	E Bongo Tow #12	SIO	36-42.93S	152-36.42W	g		DRFT07RR
1623	261201	0	ONBG	B Bongo Tow #13	SIO	37-27.10S	156-00.38W	g		DRFT07RR
1755	261201	0	ONBG	E Bongo tow #13	SIO	37-27.15S	156-02.98W	g		DRFT07RR
1312	271201	0	ONBG	B Bongo Tow #14	SIO	38-31.73S	161-14.35W	g		DRFT07RR
1443	271201	0	ONBG	E Bongo Tow #14	SIO	38-29.63S	161-14.34W	g		DRFT07RR
1112	281201	0	ONBG	B Bongo Tow #15	SIO	39-37.49S	166-41.58W	g		DRFT07RR
1245	281201	0	ONBG	E Bongo Tow #15	SIO	39-36.54S	166-43.62W	g		DRFT07RR
1904	281201	0	ONBG	B Bongo Tow #16	SIO	39-58.38S	168-24.54W	g		DRFT07RR
2034	281201	0	ONBG	E Bongo Tow #16	SIO	39-58.56S	168-26.96W	g		DRFT07RR
1610	301201	0	ONBG	B Bongo Tow #17	SIO	41-53.55S	178-11.77W	g		DRFT07RR
1738	301201	0	ONBG	E Bongo Tow #17	SIO	41-57.07S	178-29.98W	g		DRFT07RR
0335	301201	0	ONBG	B Bongo Tow #18	SIO	41-24.10S	175-39.84W	g		DRFT07RR
0500	301201	0	ONBG	E Bongo Tow #18	SIO	41-24.71S	175-41.92W	g		DRFT07RR
1920	301201	0	ONBG	B Bongo Tow #19	SIO	41-58.10S	178-33.86W	g		DRFT07RR
2047	301201	0	ONBG	E Bongo Tow #19	SIO	41-59.89S	178-35.22W	g		DRFT07RR
2003	311201	0	ONBG	B Bongo Tow #20	SIO	42-57.16S	176-15.86E	g		DRFT07RR
2104	311201	0	ONBG	E Bongo Tow #20	SIO	42-57.21S	176-13.82E	g		DRFT07RR

*** Expendable Bathythermographs ***

1902	171201	0	BTXP	MK12 #121 Fast_Deep	GDC	27-58.55S	113-06.06W	g		DRFT07RR
2157	181201	0	BTXP	MK12 #122 Fast_Deep	GDC	29-20.13S	118-57.05W	g		DRFT07RR
0304	201201	0	BTXP	MK12 #123 Fast_Deep	GDC	30-39.66S	124-46.71W	g		DRFT07RR
1544	201201	0	BTXP	MK12 #124 Fast_Deep	GDC	31-11.35S	127-08.15W	g		DRFT07RR
1527	211201	0	BTXP	MK12 #126 Fast_Deep	GDC	32-09.24S	131-19.85W	g		DRFT07RR
1615	221201	0	BTXP	MK12 #127 Fast_Deep	GDC	33-23.03S	137-05.40W	g		DRFT07RR
2159	231201	0	BTXP	MK12 #128 Fast_Deep	GDC	34-38.57S	142-50.33W	g		DRFT07RR
1739	241201	0	BTXP	MK12 #129 Fast_Deep	GDC	35-22.00S	146-18.91W	g		DRFT07RR
0315	271201	0	BTXP	MK12 #131 Fast_Deep	GDC	37-58.53S	158-31.81W	g		DRFT07RR
0115	281201	0	BTXP	MK12 #132 Fast_Deep	GDC	39-08.90S	164-16.74W	g		DRFT07RR
1925	291201	0	BTXP	MK12 #133 Fast_Deep	GDC	40-57.78S	173-26.19W	g		DRFT07RR
1000	311201	0	BTXP	MK12 #134 Fast_Deep	GDC	42-32.56S	178-26.37E	g		DRFT07RR

#***

End Sample Index

DRFT07RR