



1. Werner Dam, Out off wall.

Excavation.

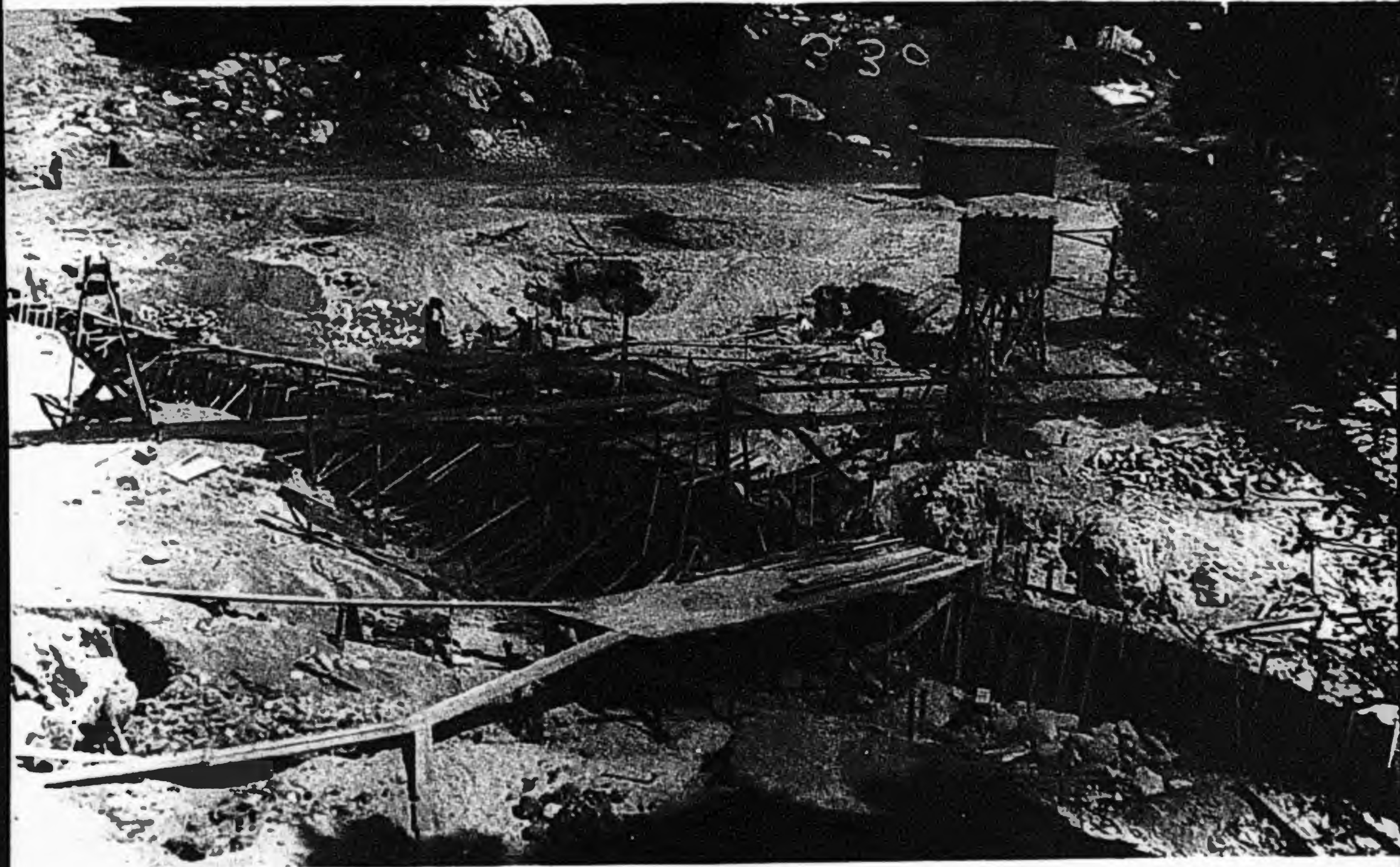


Warner, Don. Out off wall.
Out off trench.



2. Warner Dam, cut off wall.

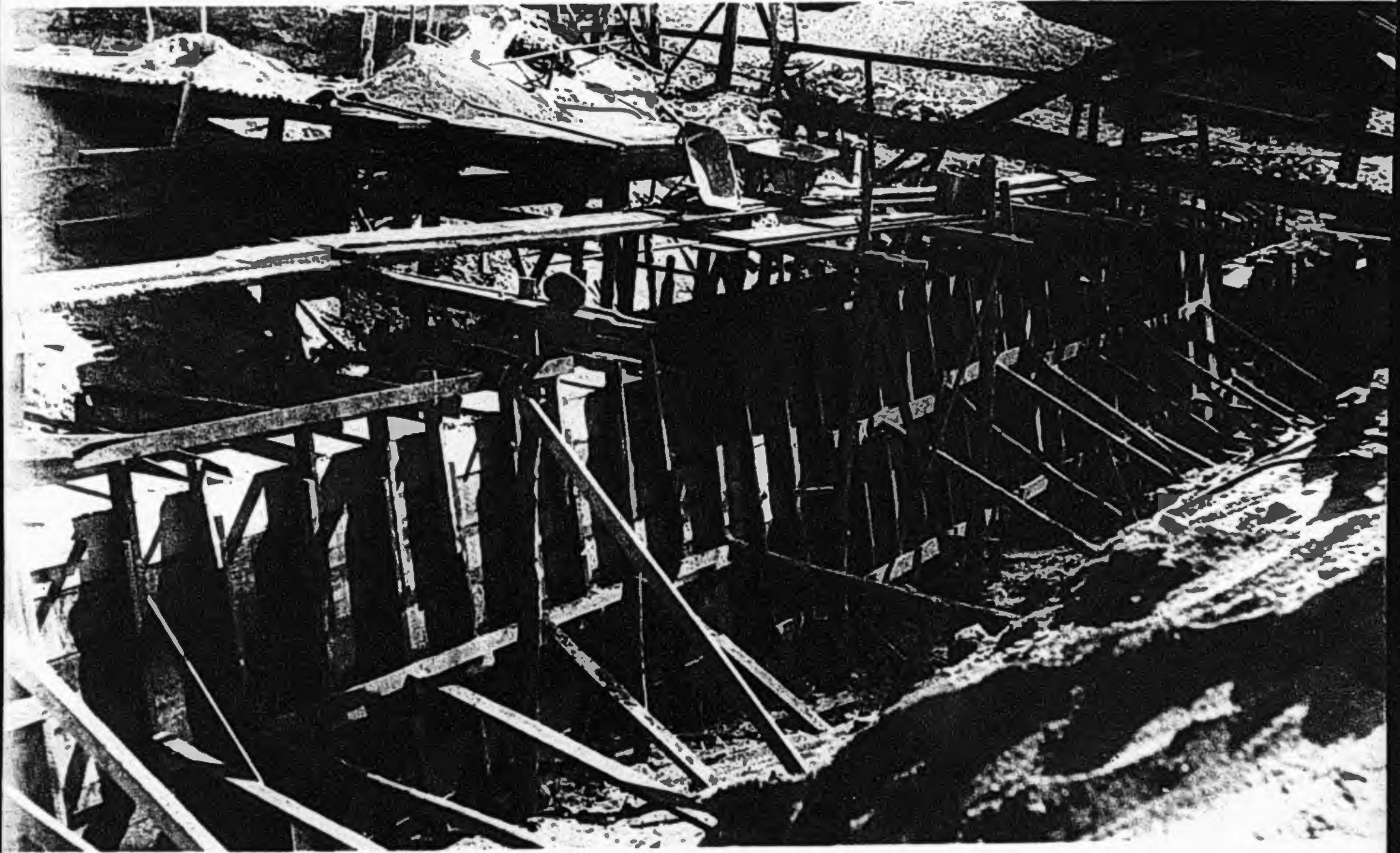
General view of excavated trench.



Water Dam, Out off wall.

General view of structure above trench

proper.

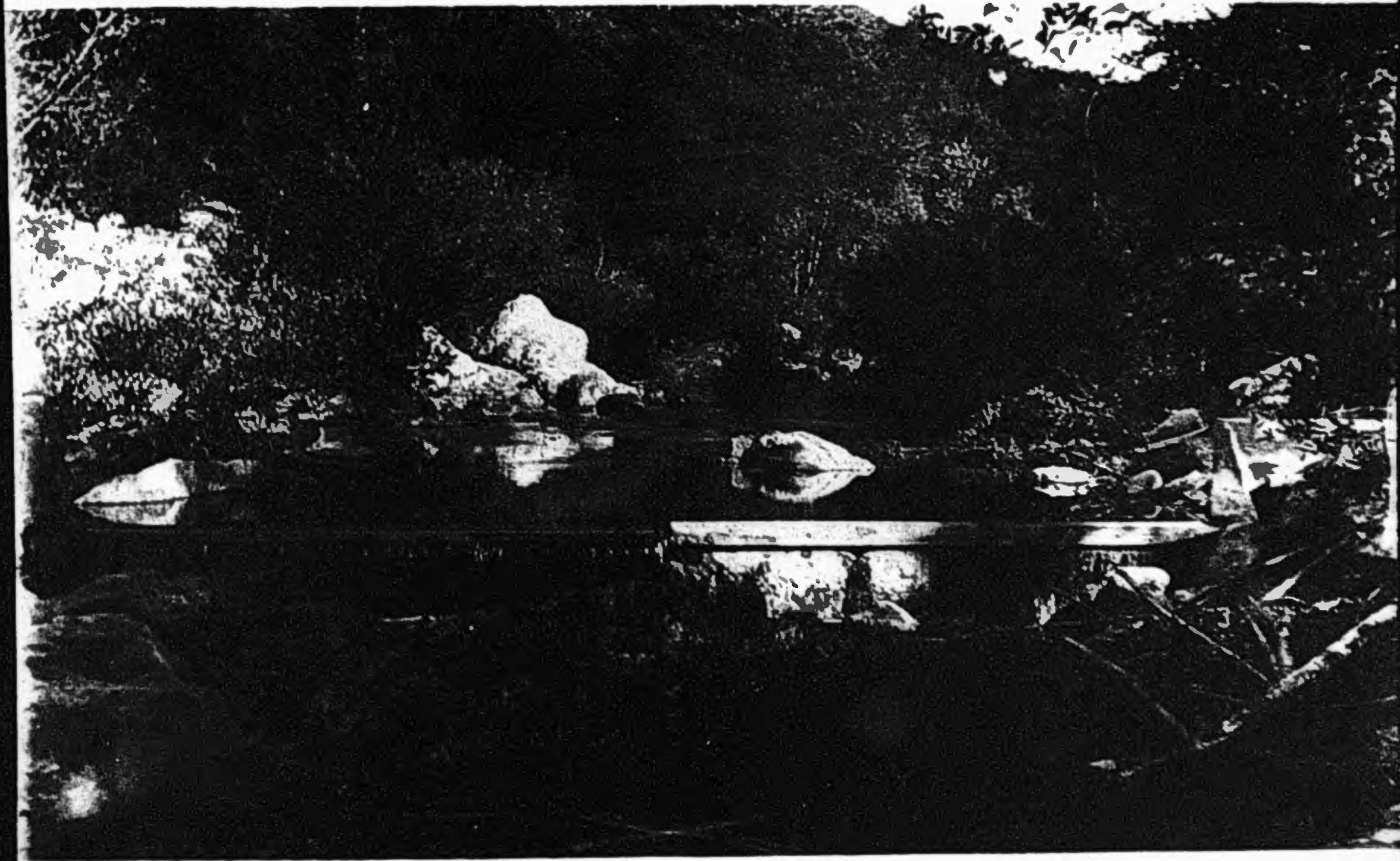


Warner Dam. Out off well.

Form work.



Harvey Dam, Cutoff wall
Completed section of wall



Warner Project, Weir.
Measuring weir as maintained in cooperation
with U. S. Geological Survey.



Fig. 8. Warner Reservoir, Outlet Tunnel.

Upper portal under construction.

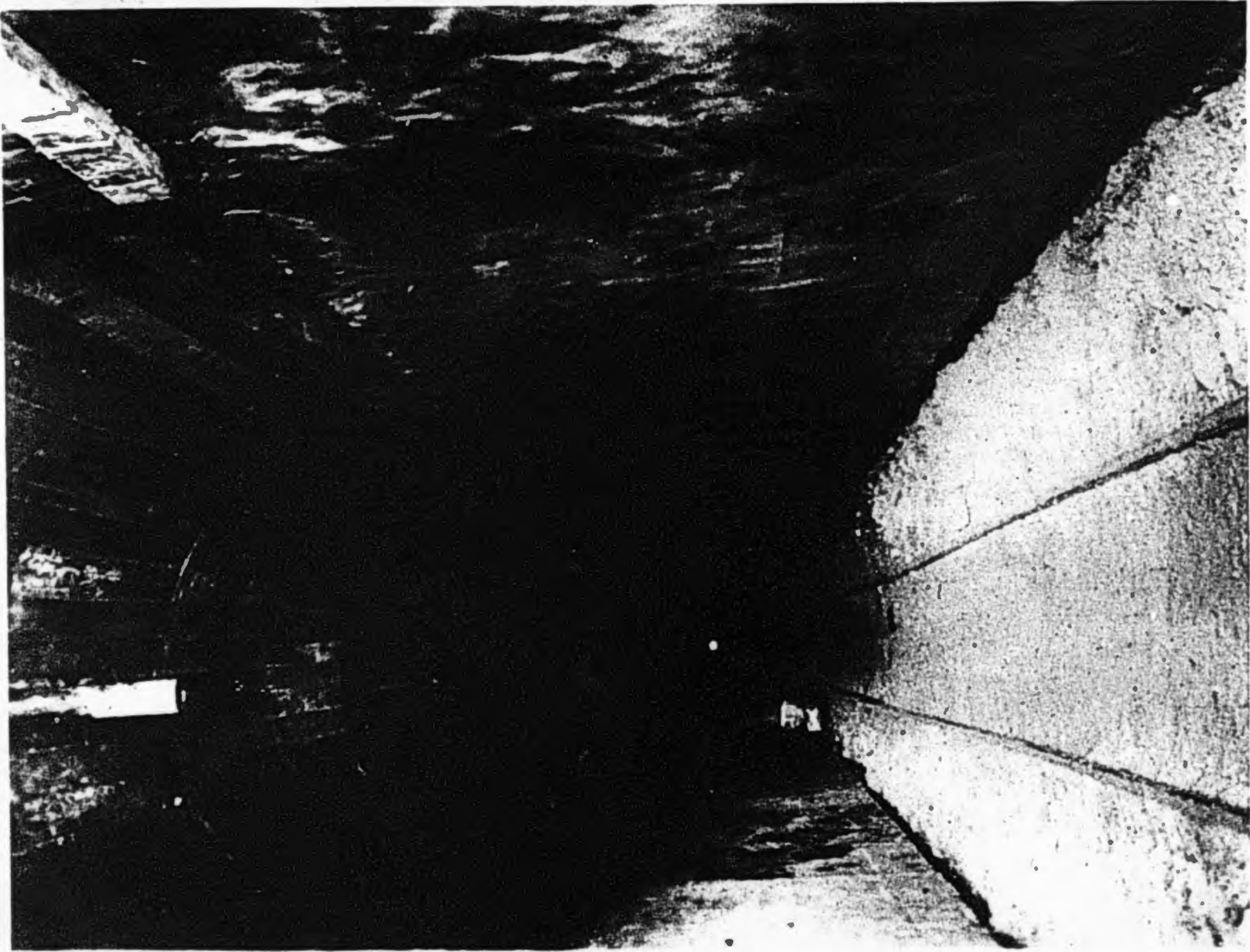
Length 1,000 ft.



Warner Reservoir, Outlet tunnel.

Lower portall under construction.

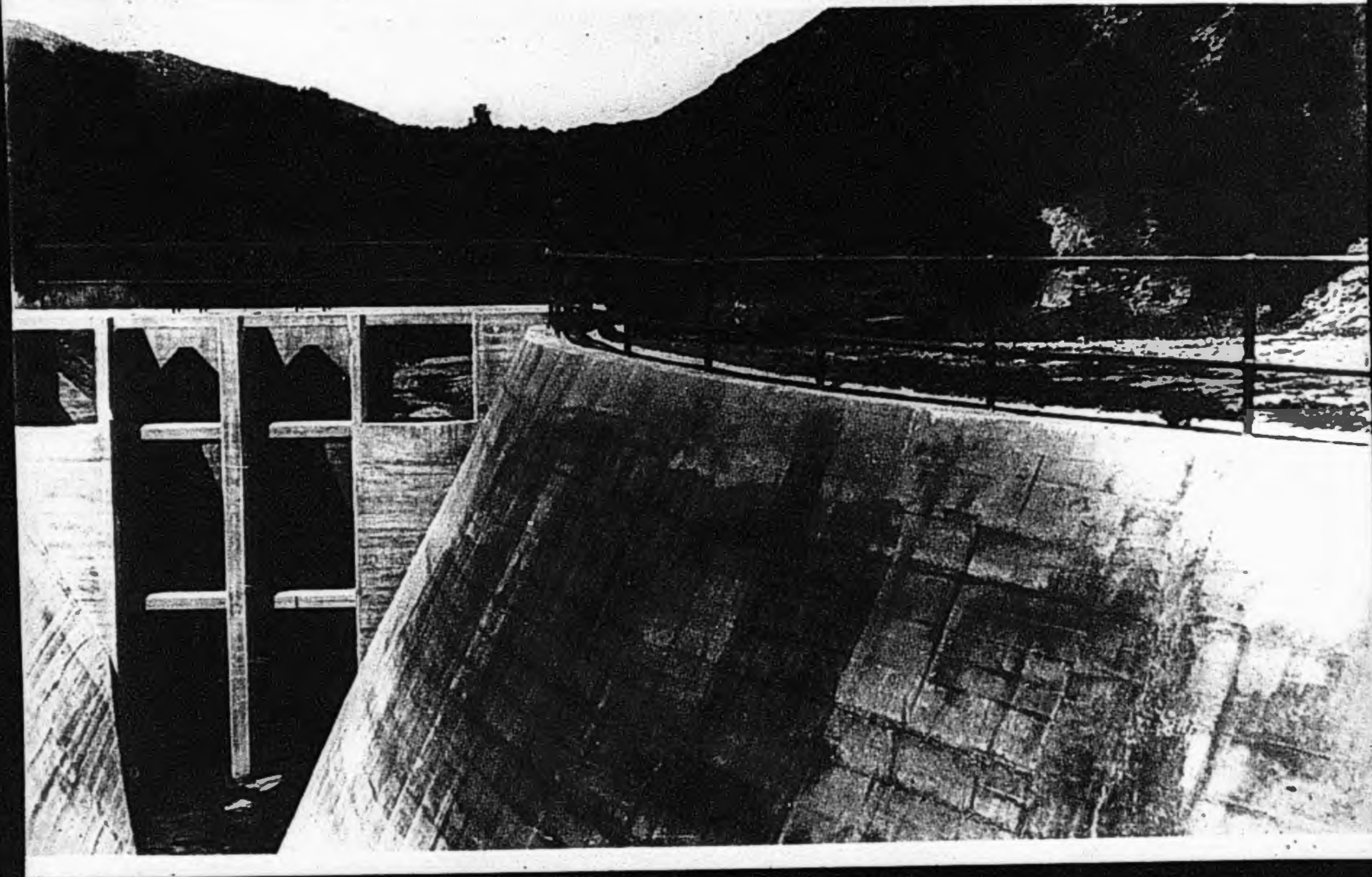
Length 1,000 feet.



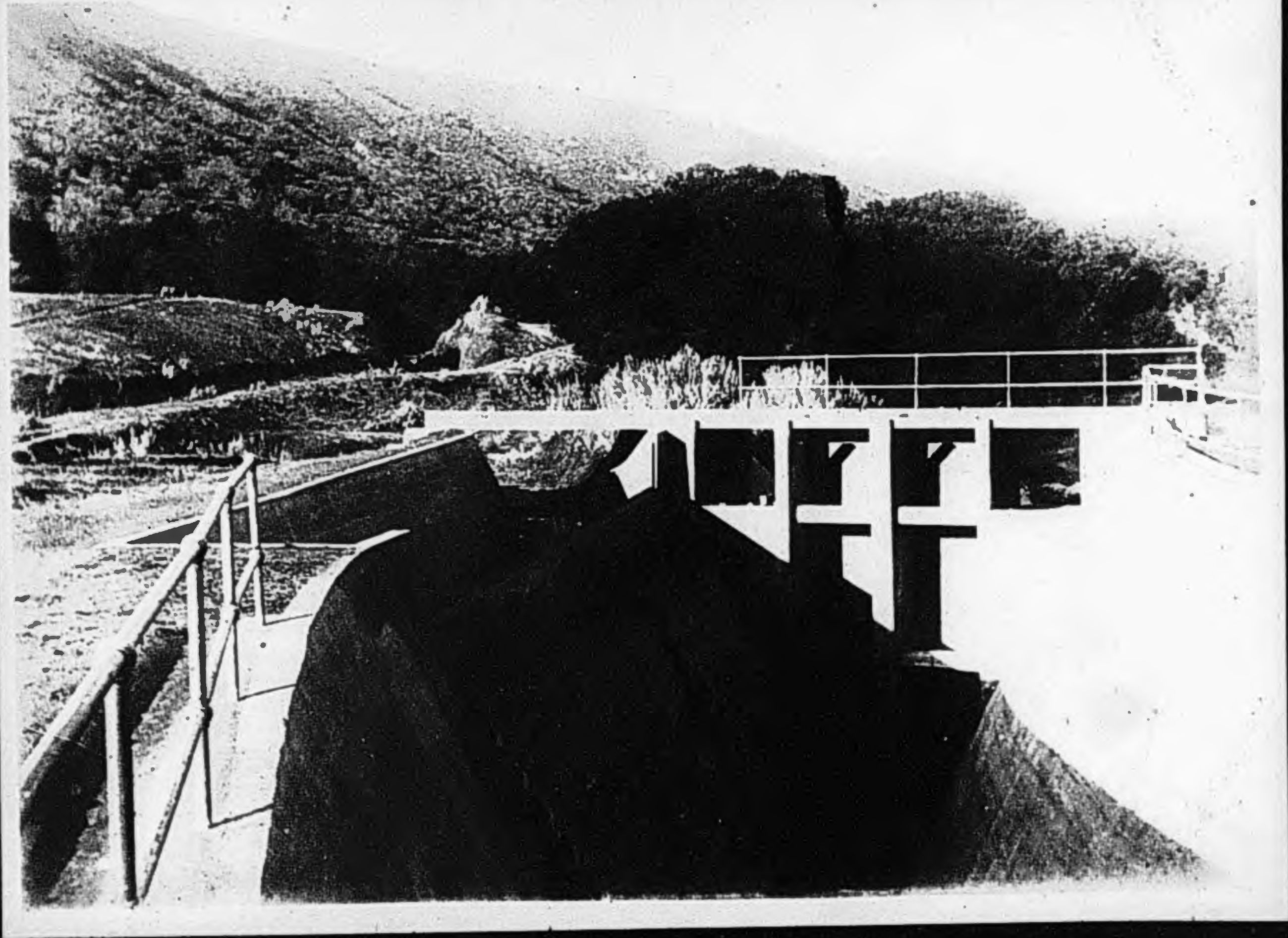
10. Warner Reservoir, Outlet tunnel.

Concrete lining.

Length 1,006 feet.



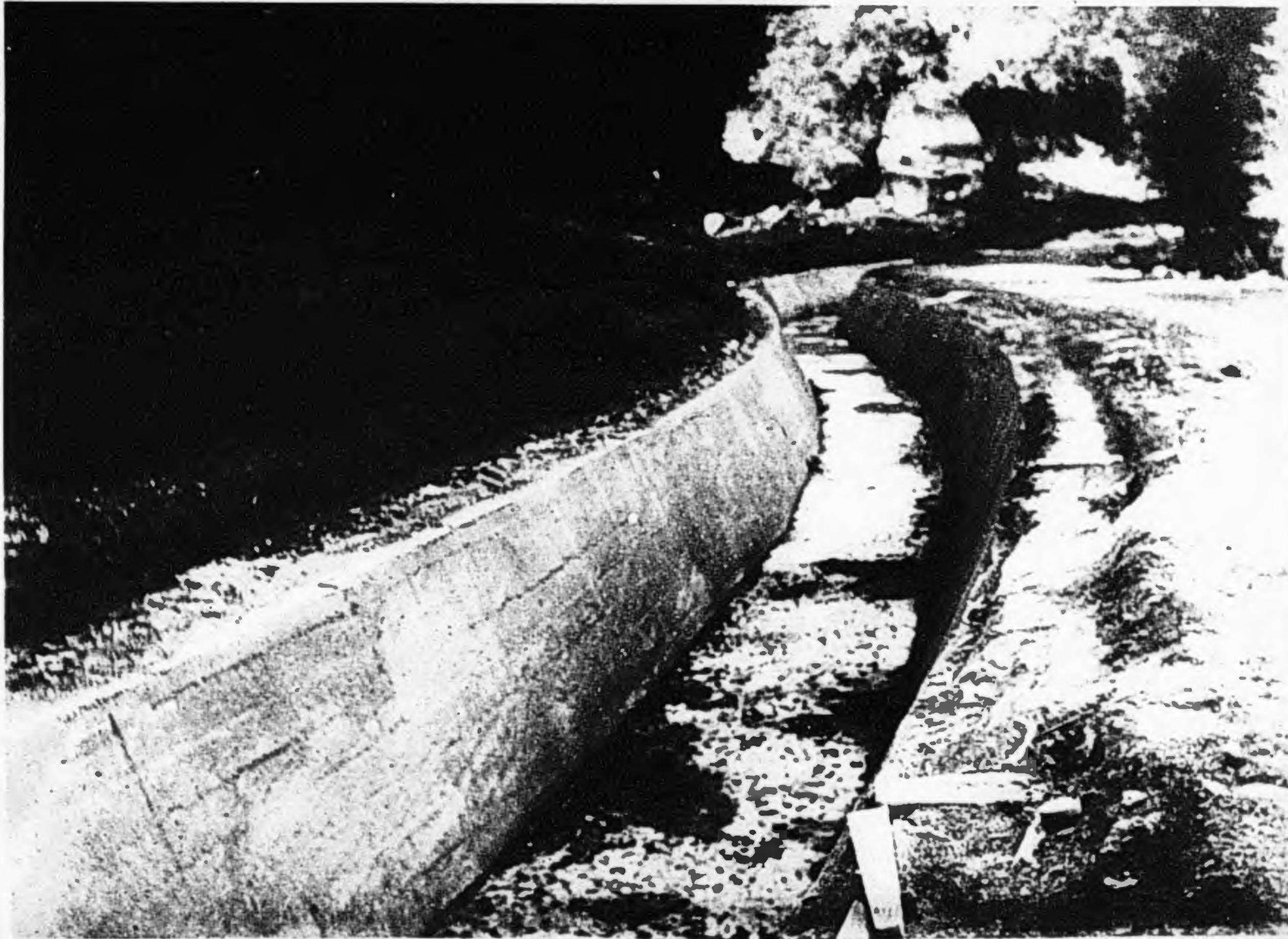
"Settling Basin", connection with
conduit and also to be used as
sluice outlet for reservoir.



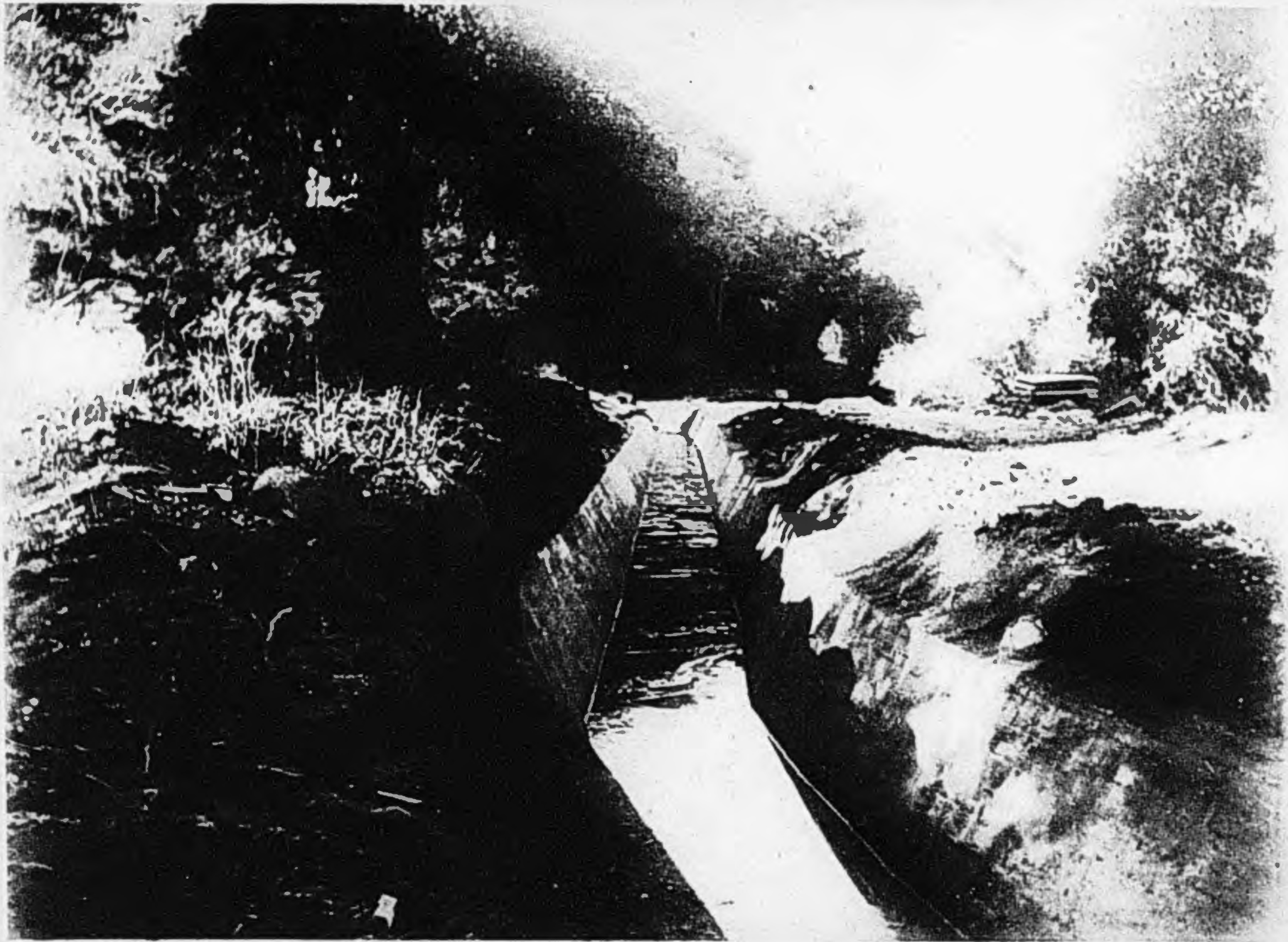
12. Settling Basin, weir and cut for condenser
in background.



12. Central. Looking up through out.



14. Culvert. 4 ft. bottom width,
5 ft. 6 in. depth.



15. Conduit.

Ed Fletcher Papers

1870-1955

MSS.81

Box: 51 Folder: 10

Business Records - Water Companies - Volcan Land and Water Company - San Dieguito System - Warner Dam (Lake Henshaw) and associated projects - Book: "Photographs showing Progress Construction on Warner Project" submitted to Forest Service



Copyright: UC Regents

Use: This work is available from the UC San Diego Libraries. This digital copy of the work is intended to support research, teaching, and private study.

Constraints: This work is protected by the U.S. Copyright Law (Title 17, U.S.C.). Use of this work beyond that allowed by "fair use" requires written permission of the UC Regents. Permission may be obtained from the UC San Diego Libraries department having custody of the work (<http://libraries.ucsd.edu/collections/mscl/>). Responsibility for obtaining permissions and any use and distribution of this work rests exclusively with the user and not the UC San Diego Libraries.