

CIRCE EXPEDITION
LEG 06

Chief Scientist: R. L. Fisher (SIO)
Ports: Pt. Louis to Pt. Louis, Mauritius
Dates: 4 August - 1 September 1968
Ship: R/V Argo

TOTAL MILEAGE OF UNDERWAY DATA COLLECTED

- 1) Cruise - 5168 miles
- 2) Bathymetry - 5158 miles
- 3) Magnetics - 5052 miles

CRUISE ID	COMMENT	G.M.T.		LOCAL		TIME ZONE
		DATE DD/MM/YY	TIME HHMM	DATE DD/MM/YY	TIME HHMM	
CIRC06AR	BEGIN	04/08/68	0628 Z			
	END	31/08/68	0549 Z			

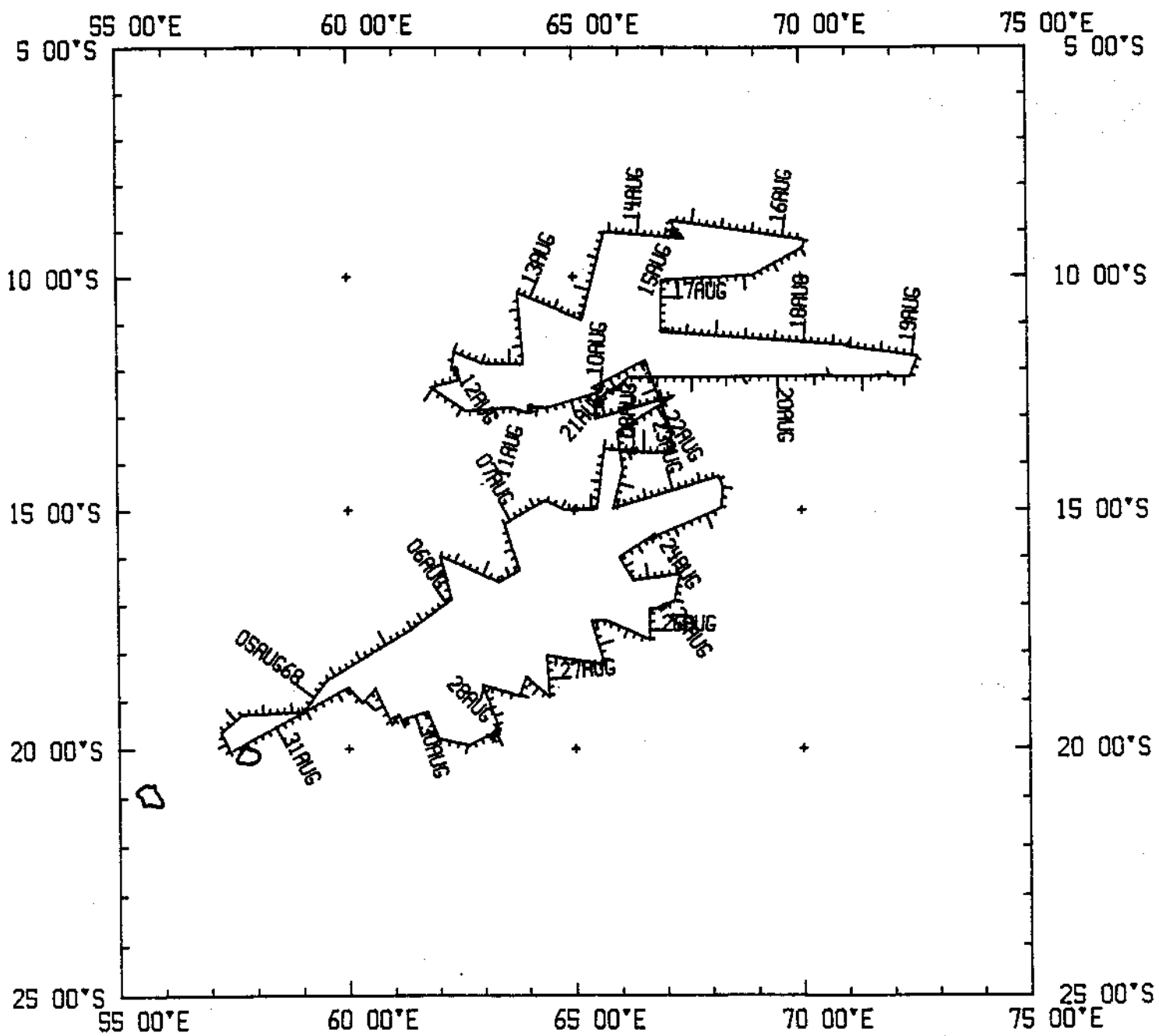
LISTING OF MGD77 EXCHANGE FORMAT HEADER:

#

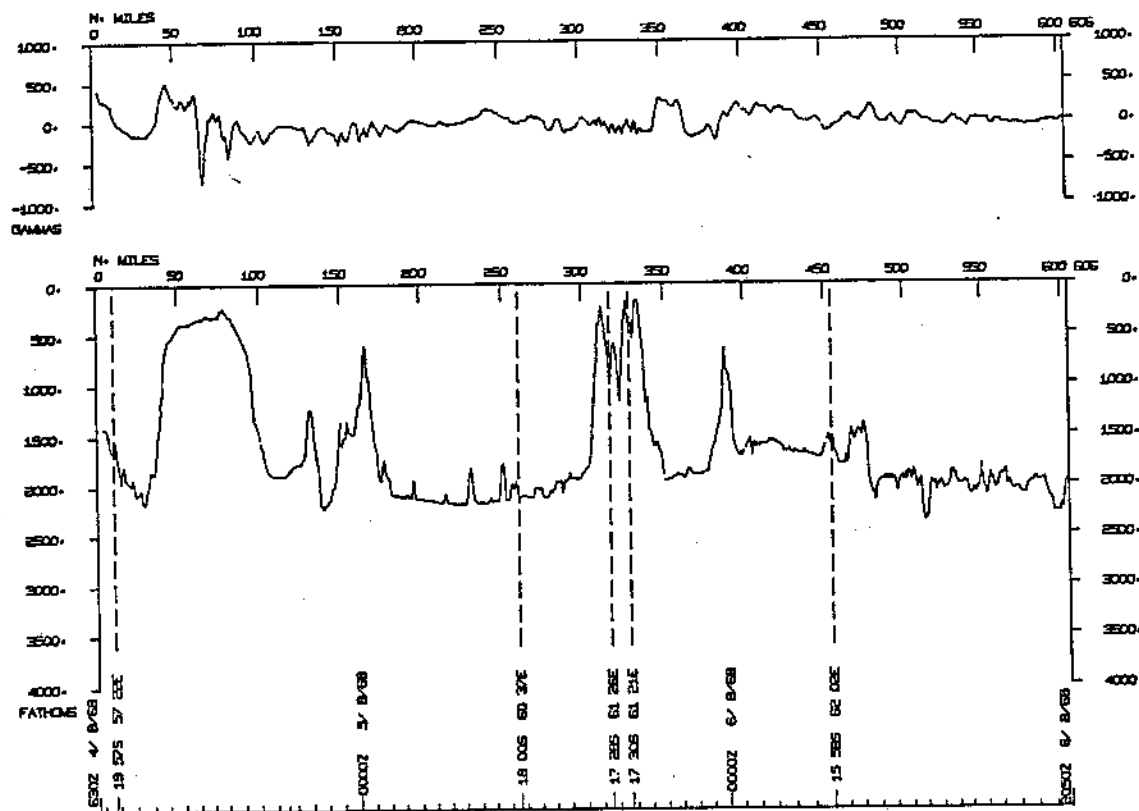
1CIRC06ARMGD77	102955111810616	SCRIPPS INSTITUTION OF OCEANOGRAPHY	01
USA	R/V ARGO	1SHIP FISHER R.L.	02
CIRCE LEG 6			03
680804PT.LOUIS,MAURITIUS	680901PT.LOUIS,MAURITIUS		04
SATNAV,MANUAL ENTRY GYRO AND SPD CHANGES	LINEAR INTERP.BETWEEN ADJACENT FIXES		05
12KHZ/GIFFT RECORDER/WIDE(60DEG)BEAM	ANALOGUE RECORDS,PUNCHED CARDS		06
VARIAN MFD PROTON PRECESSION MOD 4970	ANAL.RECORDS,CARDS		07
			08
			09
A(11,A8,F5.2,4I2,F5.3,F8.5,F9.5,I1,F6.4,F6.1,I2,I1,3F6.1,I1,F5.1,F6.0,F7.1,			10
F6.1,F5.1,A8,4I1)			11
0501SECONDSWEEP14630005 MINUTE INTERVAL			12
0500699999999999999903IGRF 1965	LIN.INTERP.AT 30DEG C/C OR 500MI ALONG TRACK		13
			14
			15
			16
			17
			18
			19
			20
			21
			22
			23
			24

#

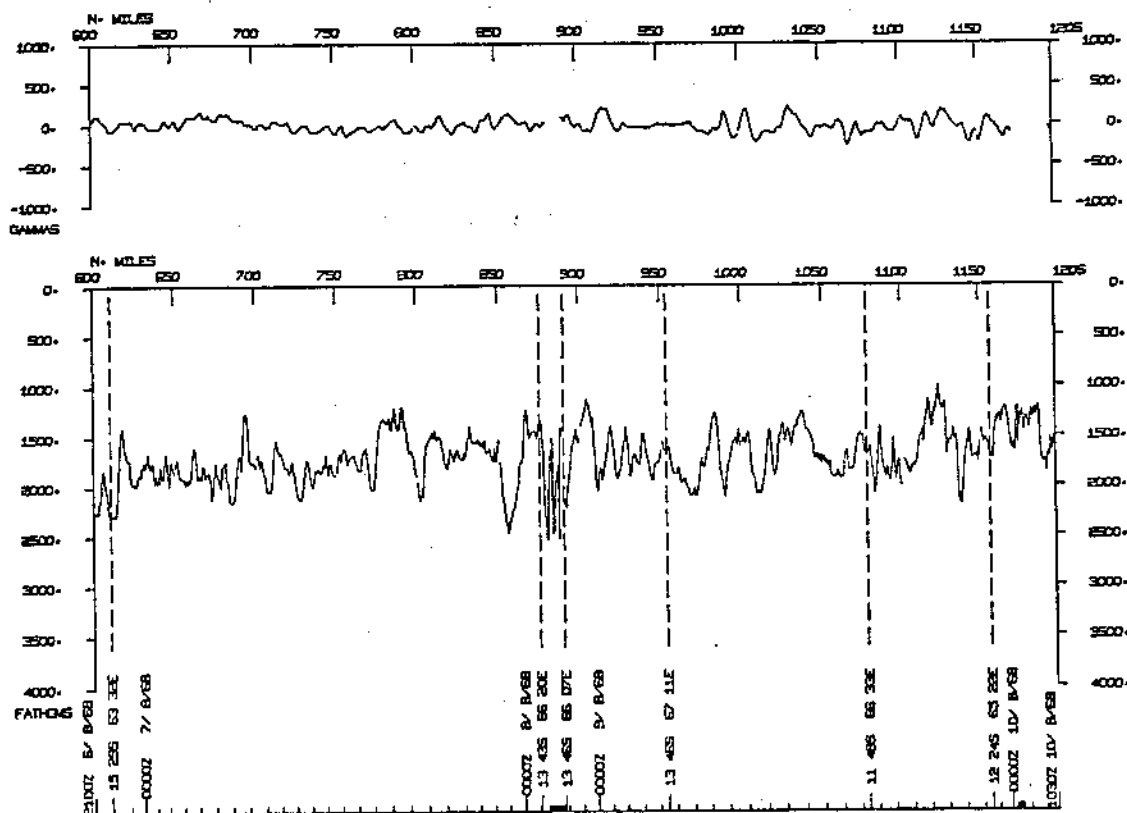
CIRC06AR



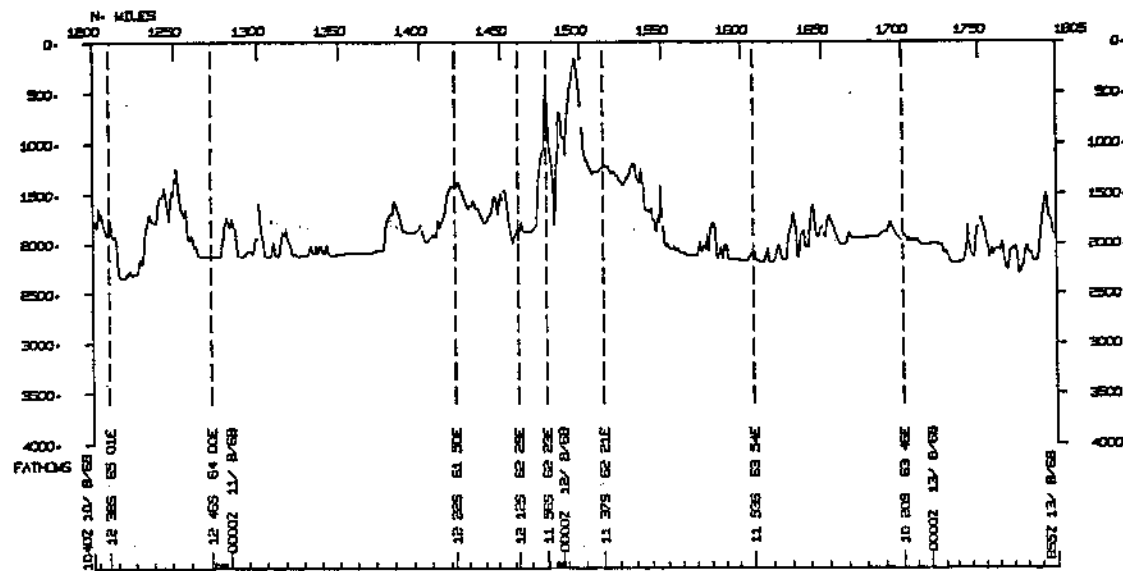
CIRCE LEG 06



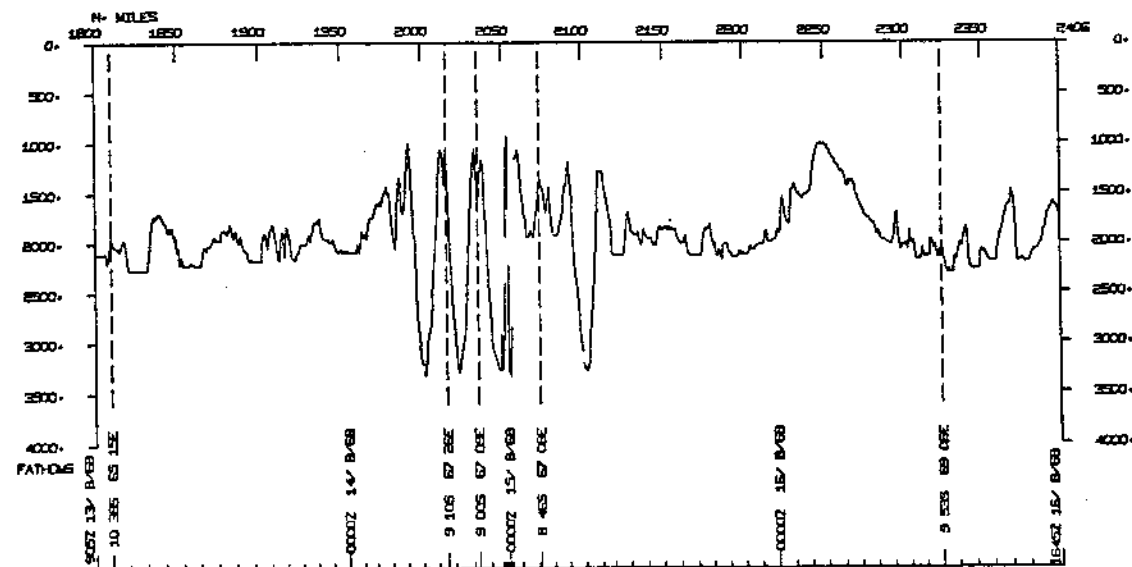
CIRCE LEG 06



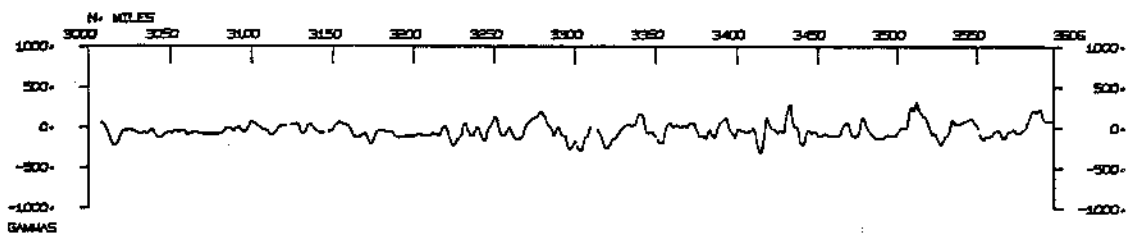
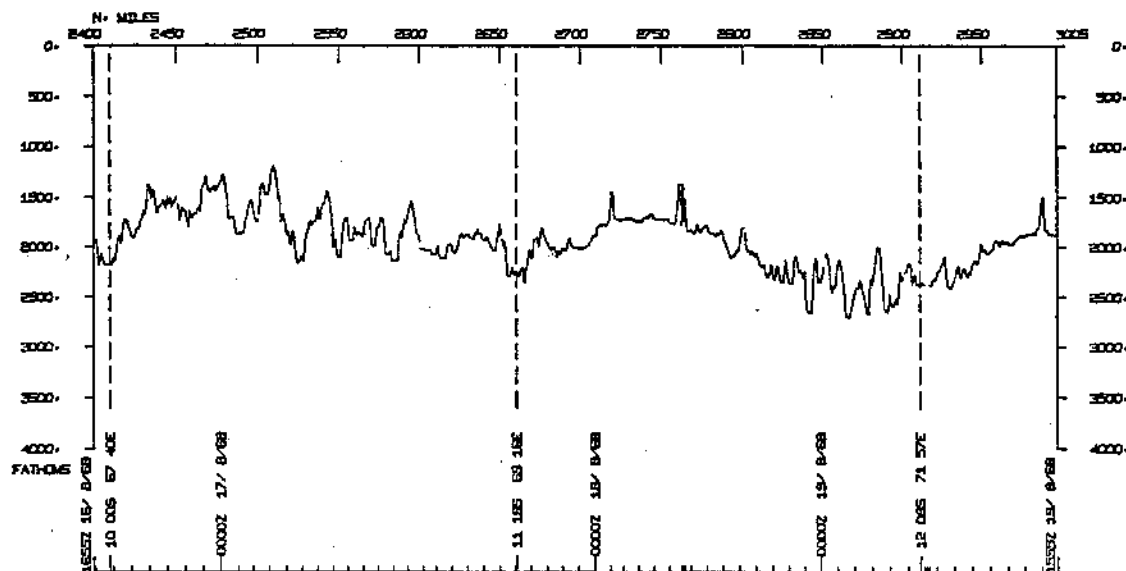
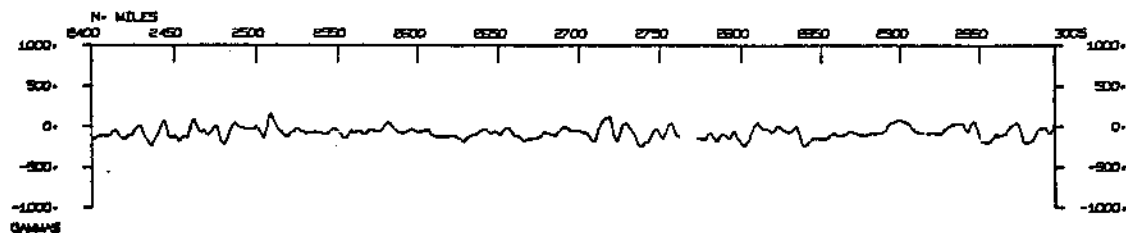
CIRCE LEG 06



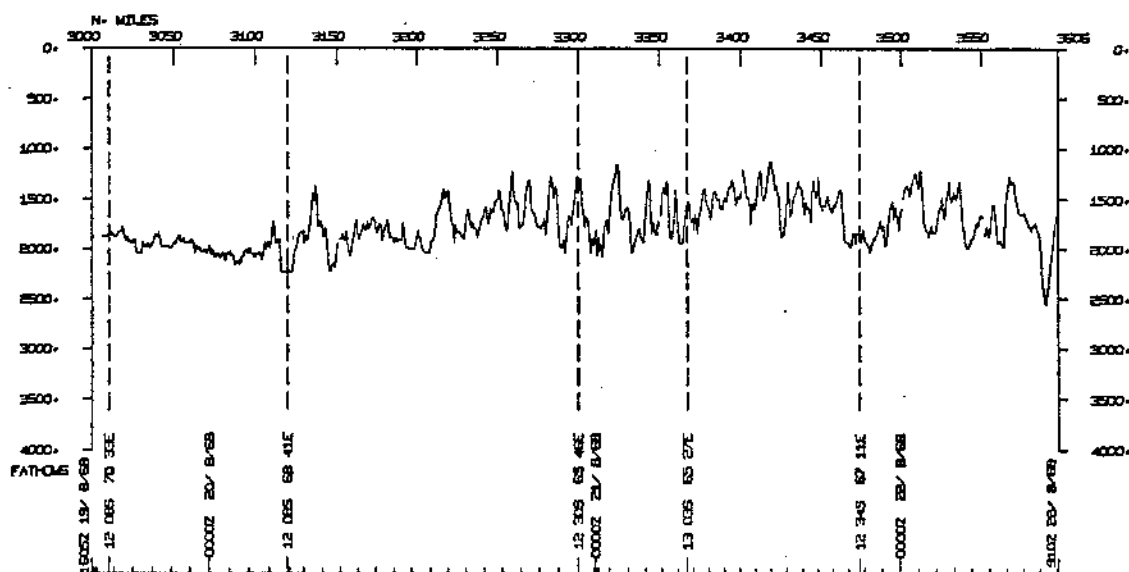
CIRCE LEG 06



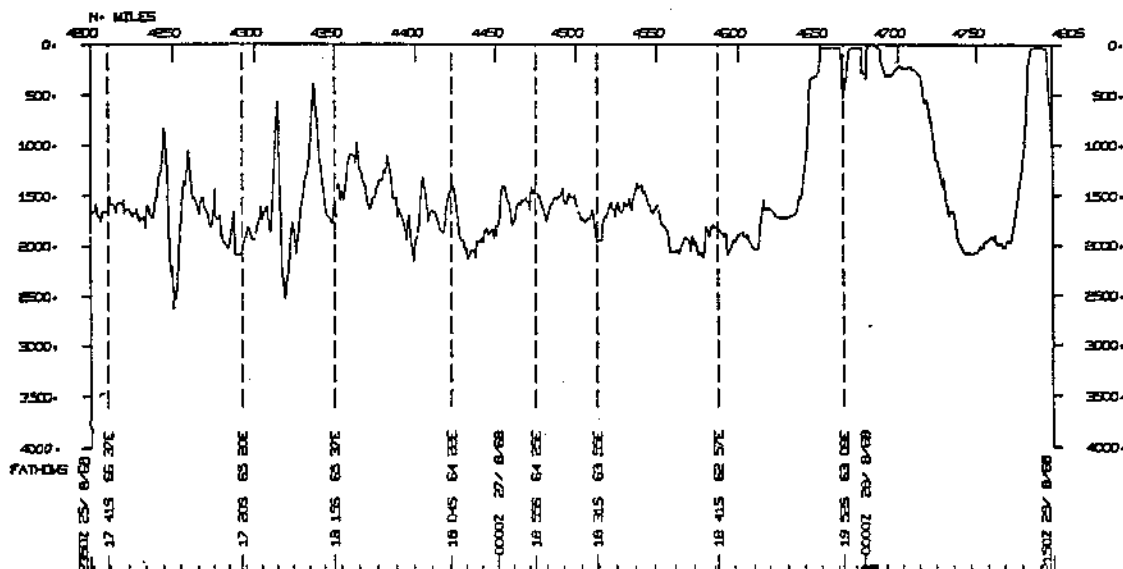
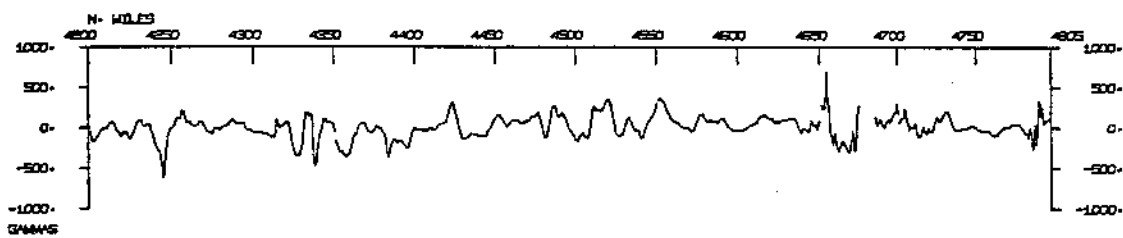
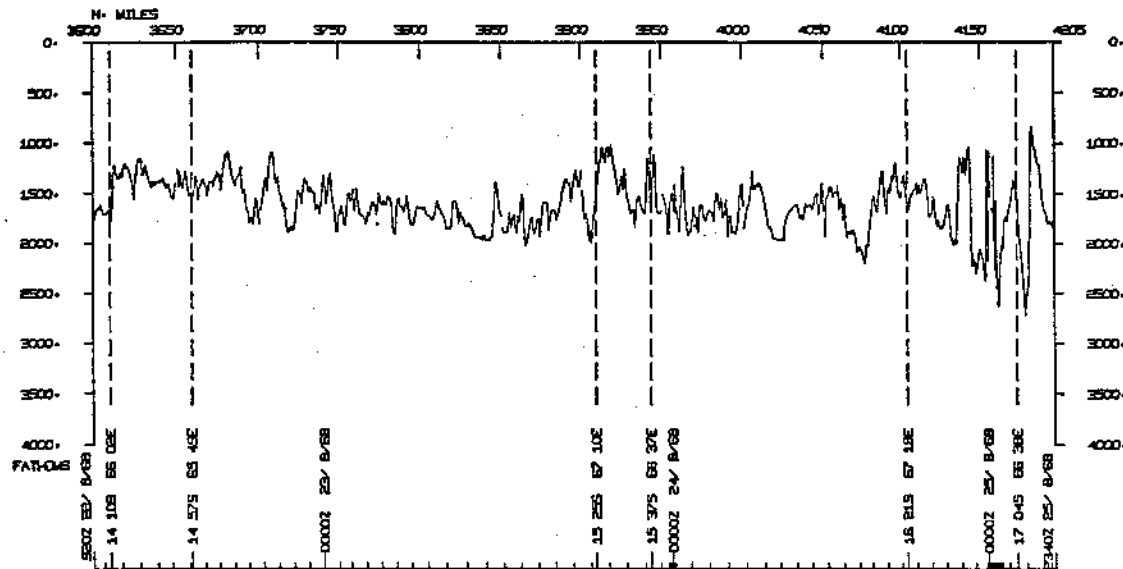
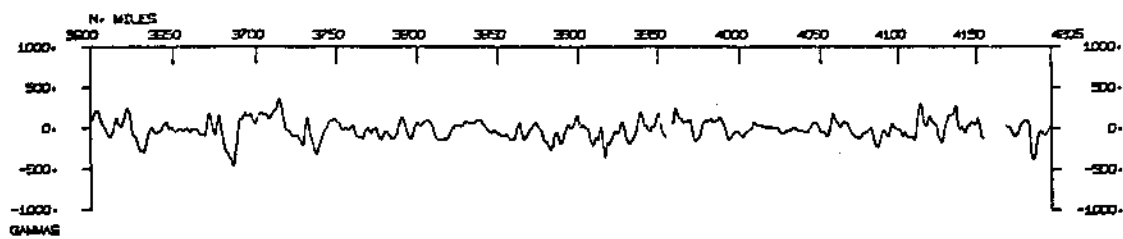
CIRCE LEG 06



CIRCE LEG 06



CIRCE LEG 06



CIRCE LEG 06

