

*REPORT AND INDEX OF
UNDERWAY MARINE GEOPHYSICAL DATA*

SINKEX EXPEDITION

LEG 1

(SNKX01RR)

R/V Revelle

(Issued March 1999)

Ports:

San Diego, California (11 November 1998)

to

San Diego, California (19 November 1998)

Chief Scientist:

Christian de Moustier, Scripps Institution
email: cdemoustier@ucsd.edu

Resident Marine Technician - Tammy Koonce

Computer Technician - Jim Charters

Post-Cruise Processing and Report Preparation by the
Geological Data Center, Scripps Institution of Oceanography
La Jolla, California 92093-0223

NOTE: *This is an index of underway geophysical data edited and processed after the completion of the cruise leg and is intended primarily for informal use within the institution. This document is not to be reproduced or distributed outside Scripps without prior approval of the chief scientist or the Geological Data Center, Scripps Institution of Oceanography, La Jolla, California 92093-0223*

GDC Cruise I.D.# 282

**REPORT AND INDEX OF NAVIGATION
AND UNDERWAY GEOPHYSICAL DATA**

Processed by the Geological Data Center
Scripps Institution of Oceanography

Contents:

Index Chart - gives track of cruise leg, dates, ports, and mileage of each type of data collected.

Track Charts - annotated with dates and hour ticks.

Profiles - depth, magnetic and gravity free air anomaly vs. distance. (Sections of track with seismic reflection data have a wide black line along the bottom of the profile.)

Sample Index - list of begin/end times and positions of all underway records as well as samples and measurements from other disciplines collected on the leg.

NOTE: One or more of the underway data types may not be collected on a given leg. For information on the availability and reproduction costs of data in the following forms, contact S.M. Smith, Curator, Geological Data Center, Scripps Institution of Oceanography, La Jolla, California 92093-0223. Phone: (619)534-2752, FAX: (619)534-6500, Internet email: ssmith@ucsd.edu

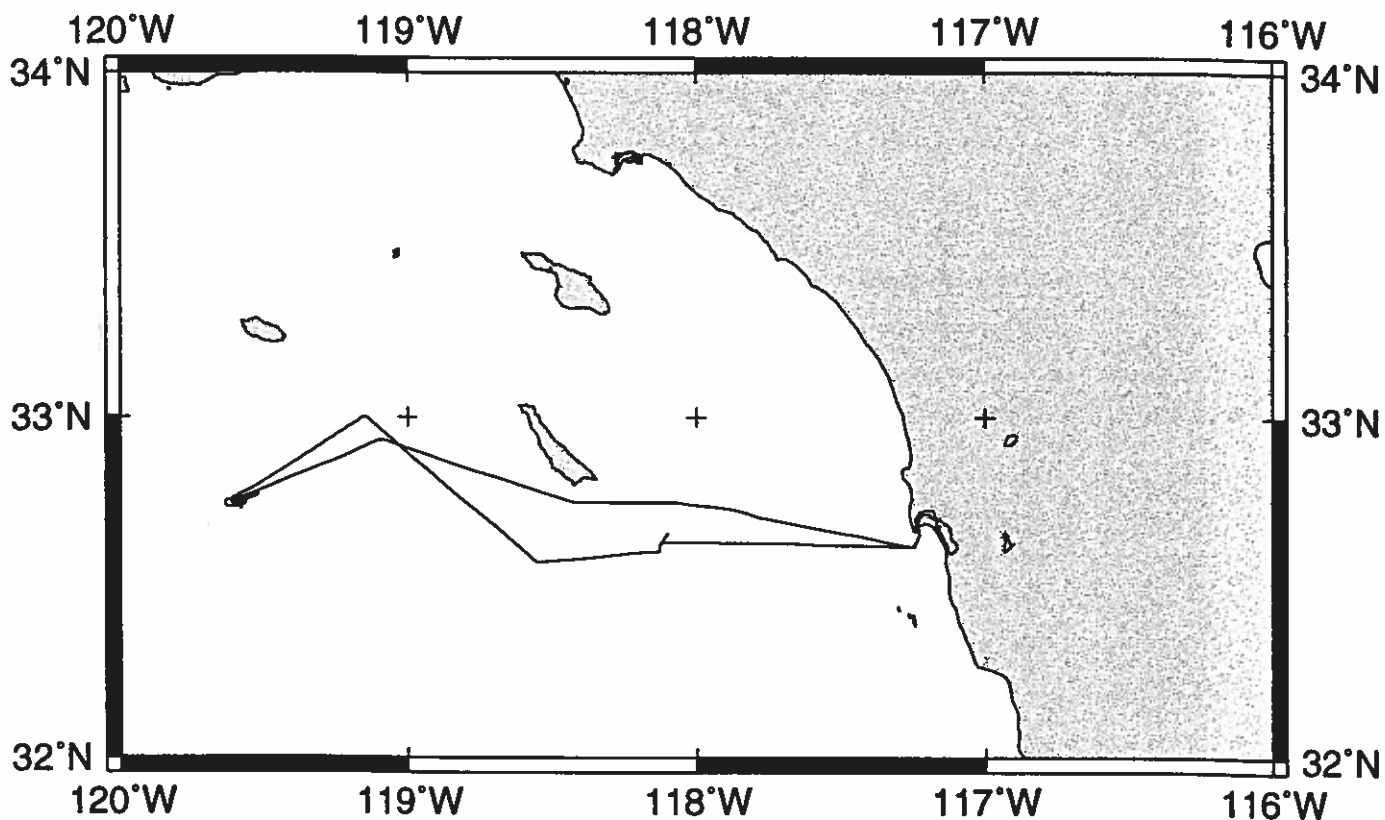
1. Files via ftp or on 8mm (Exabyte) and 4mm (DAT) magnetic tape:
 - a) Separate time series ASCII files of navigation, single beam depth, gravity and magnetics.
 - b) Above data in a single merged ASCII file in the MGD77 Exchange Format.
 - c) SeaBeam depth data (binary, Sun byte order)
 - d) SeaBeam Sidescan data.

2. Microfilm (35 mm flowfilm) or hard copies of:
 - a) Underway watch log book.
 - b) SeaBeam vertical beam profile/Sidescan records.
 - c) 3.5 kHz and 12 kHz echosounder records.
 - d) Seismic reflection profiler records.

3. Navigation listing with times and positions of fixes and course and speed changes.

4. Custom plots in Mercator projection:
 - a) Track plots.
 - b) SeaBeam depth contour plots.
 - c) Depth, magnetic or gravity values printed or profiled along track.

rev 4/98



SINKEX EXPEDITION LEG 1 (SNKX01RR)

CHIEF SCIENTIST: Christian deMoustier, Scripps Institution

PORTS: San Diego - San Diego, California

DATES: 11 - 19 November 1998

SHIP: R/V Revelle

TOTAL MILEAGE OF UNDERWAY DATA COLLECTED

Cruise - 354 miles

Magnetics - none collected

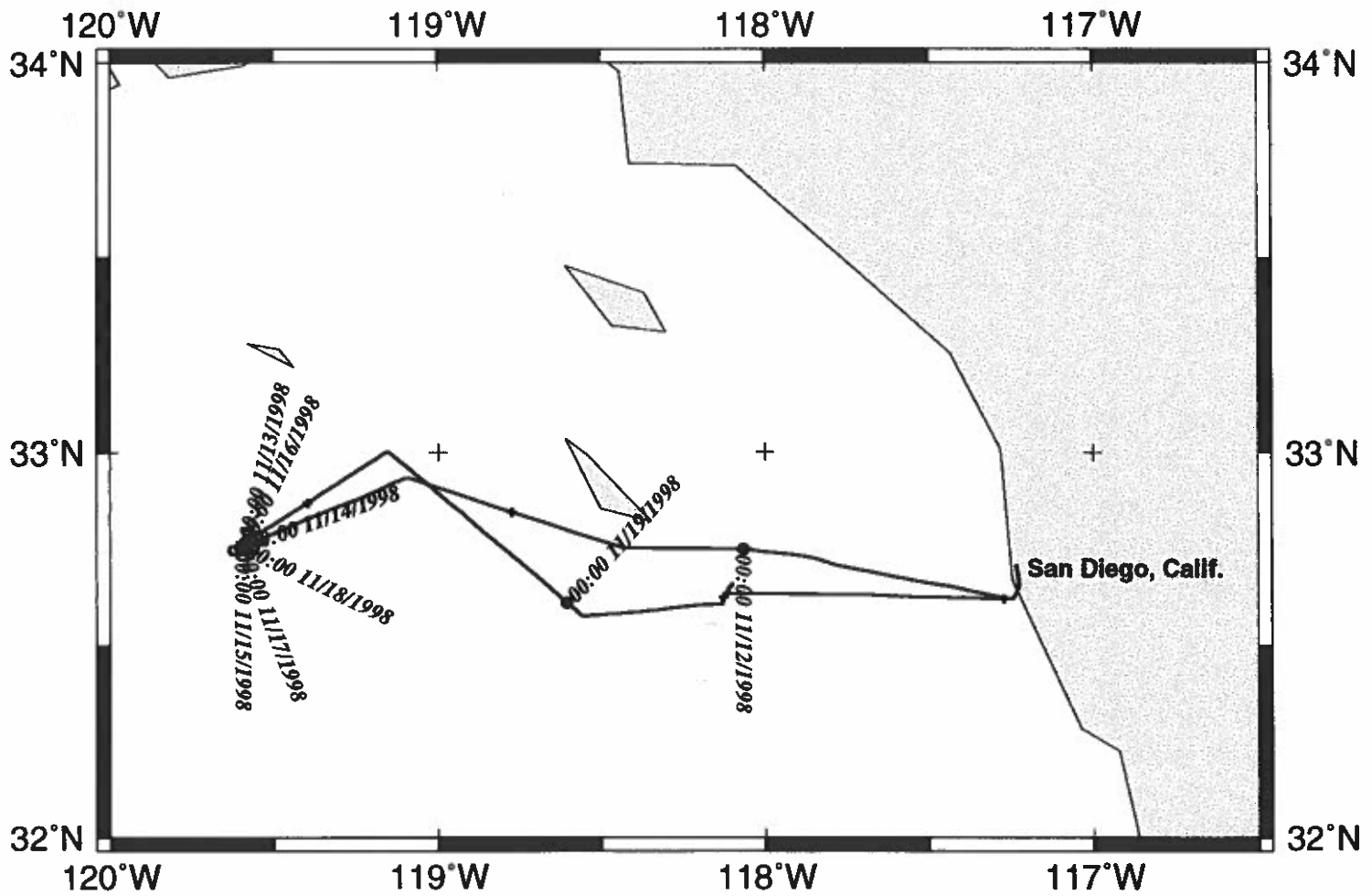
Bathymetry - 284 miles

Seismic Reflection - none collected

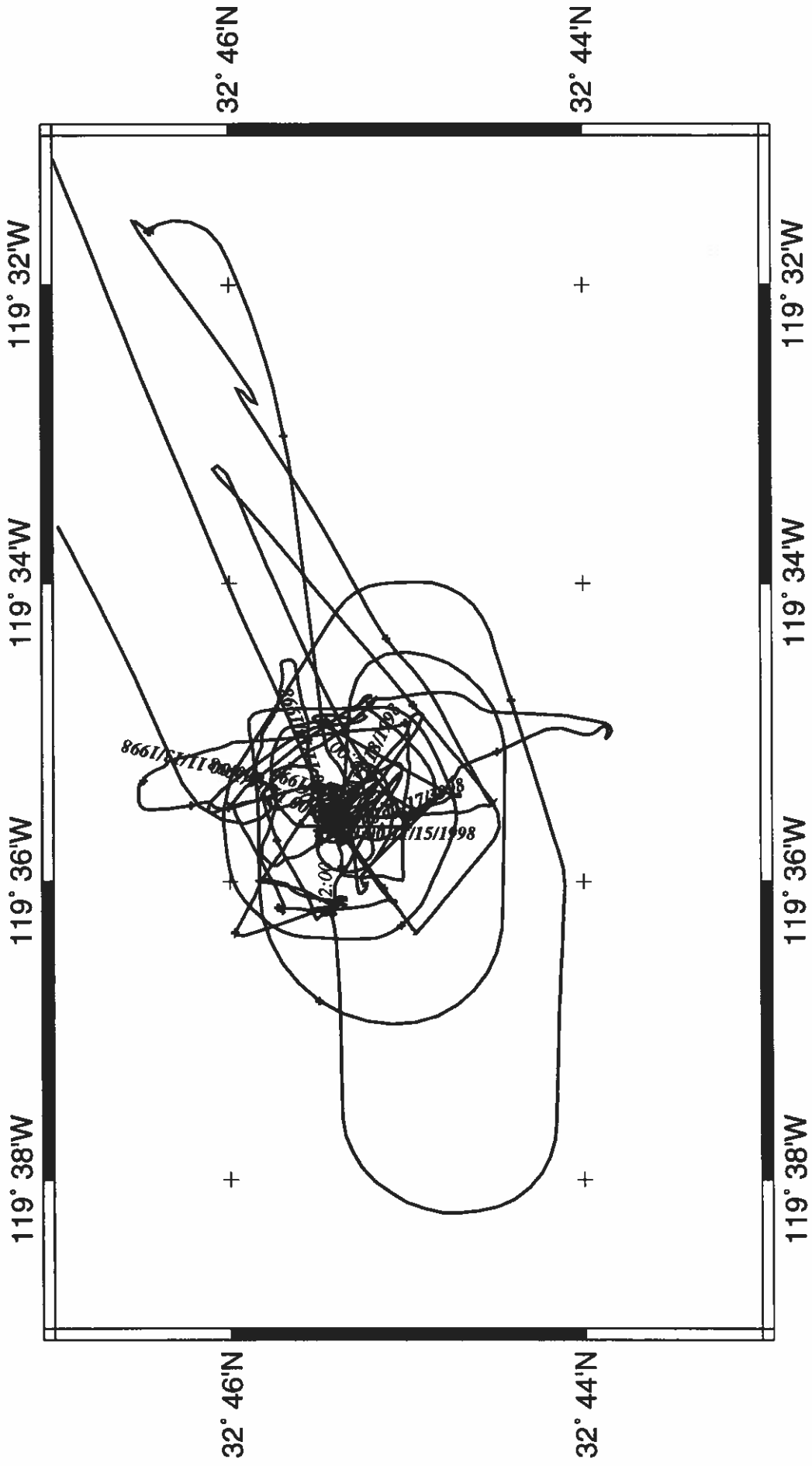
Sea Beam - 284 miles

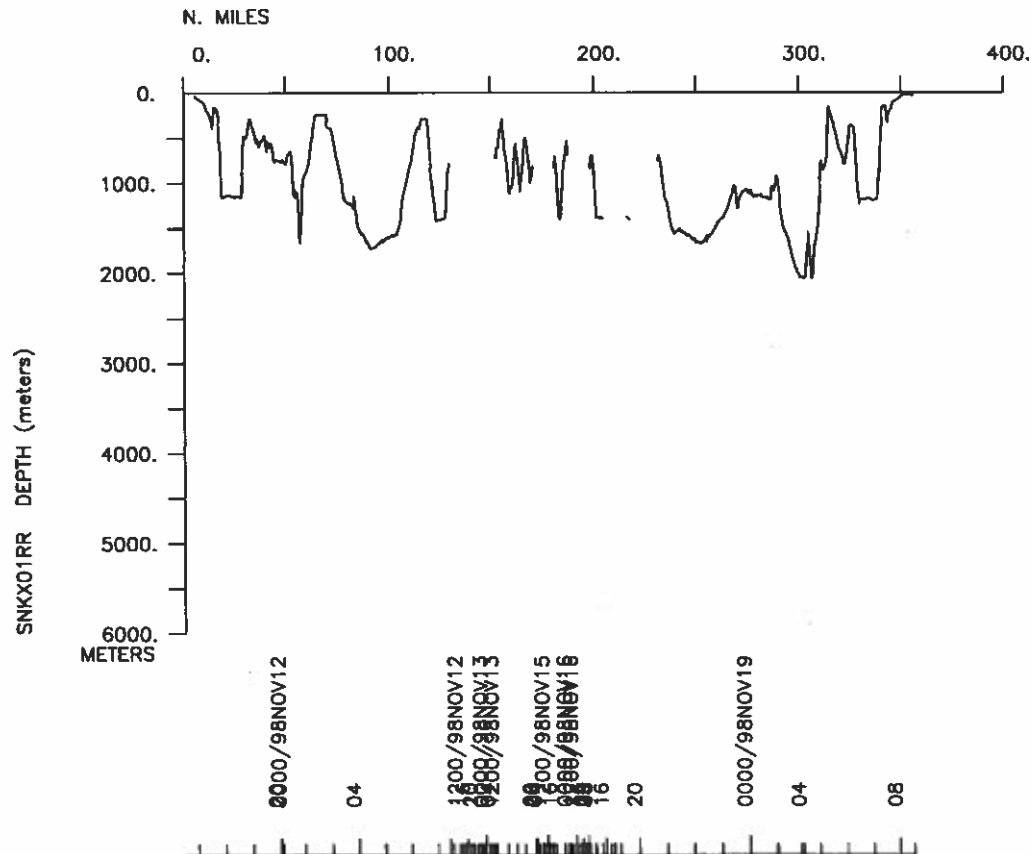
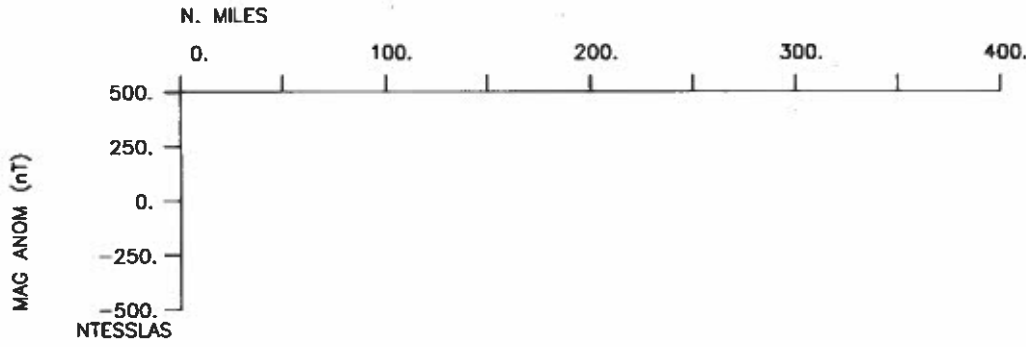
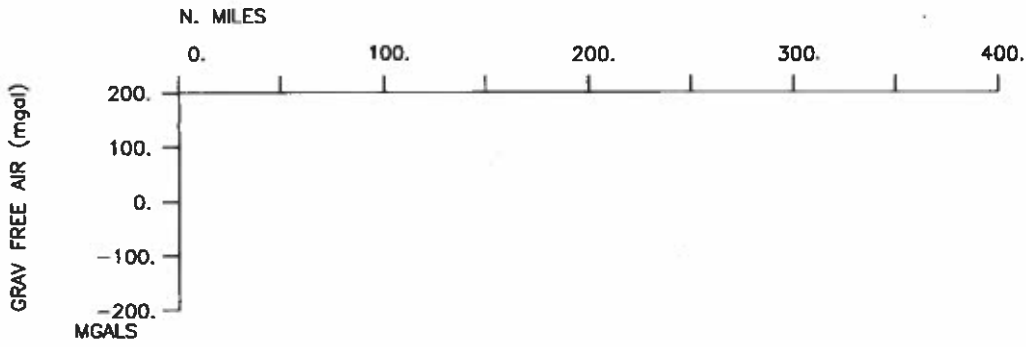
Gravity - none collected

SNKX01RR Track



SNKX01RR Survey





S.I.O. SAMPLE INDEX

SINKEX EXPEDITION

LEG 1

(SNKX01RR)

R/V Revelle

(Issued March 1999)

Ports:

San Diego, California (11 November 1998)

to

San Diego, California (19 November 1998)

Chief Scientist:

Christian deMoustier, Scripps Institution

The Sample Index is a first level interdisciplinary listing of time, position, sample identification and disposition of all samples, records and measurements collected on this cruise leg. The index data are encoded at sea by the resident marine technician and processed on shore by the S.I.O. Geological Data Center shortly after the completion of the cruise leg.

Positions are interpolated on the basis of sample time by comparison to a single, edited navigation file. Samples beginning at one time and position and ending at another are entered on two consecutive lines. Disposition and sample type are represented by three and four character codes to permit future computer searches on these parameters. (Listings defining these codes are available from the Geological Data Center.)

GDC Cruise I.D.# 282

**** PORTS ***

1630 111198 0 LGPT B San Diego, CA GDC 32-40.00N 117-14.00W f SNKX01RR
 0855 191198 0 LGPT E San Diego, CA GDC 32-40.00N 117-14.00W f SNKX01RR

**** Personnel ***

#	*****Name*****	*****Title*****	*****Affiliation****	**Crid**
PECS MPL	de Moustier,C	Chief Scientist	Scripps Institution	SNKX01RR
PESP MPL	Austin,G.	Dev Tech	Scripps Institution	SNKX01RR
PERT SCG	Charters,J.	Computer Tech	Scripps Institution	SNKX01RR
PESP SIX	Coogan,T.	Scientist	A.D. Little Co.	SNKX01RR
PESP SIX	Diener,D.	Scientist	Marine Eco Consult.	SNKX01RR
PESP SIX	Duckworth,D.	Scientist	Spawar	SNKX01RR
PESP SIX	Gauthier,R.	Scientist	Spawar	SNKX01RR
PESP SIX	Hardin,J.	Scientist	A.D. Little Co.	SNKX01RR
PESP SIX	Irwin,M.	Technician	Marine Eco Consult.	SNKX01RR
PESP SIX	Isham,W.	Technician	Marine Eco Consult.	SNKX01RR
PESP MPL	Jabson,D.	Engineer	Scripps Institution	SNKX01RR
PESP MPL	Jonke,P.	Engineer	Scripps Institution	SNKX01RR
PESP SIX	Norton,J.	Technician	Marine Eco Consult.	SNKX01RR
PESP SIX	Newton,S.	Scientist	A.D. Little Co.	SNKX01RR
PESP IGPP	Norenburg,M.	Dev Tech	Scripps Institution	SNKX01RR
PESP MPL	Price,D.	Technician	Scripps Institution	SNKX01RR
PESP SIX	Samantis,H.	Scientist	Spawar	SNKX01RR
PESP SIX	Wild,W.	Senior Scientist	Spawar	SNKX01RR
PESP MPL	Zimmerman,R.	Engineer	Scripps Institution	SNKX01RR
PESP SIX	Slipchenko,T.	Scientist	A.D. Little Co.	SNKX01RR
PESP GDC	Smith,S.	Seabeam tech	Scripps Institution	SNKX01RR
PESP SCG	Mogk,S.	Technician	Scripps Institution	SNKX01RR
PERT STS	Koonce,T.	Res Tech	Scripps Institution	SNKX01RR

**** Notes ***

#An 'X' in the (B)egin/(E)nd column following the sample code indicates no
 #sample or data recovered. A 'C' indicates continuation of data collection
 #from before the beginning or after the end of a particular leg (moored
 #bottom instruments, for example.) The number appearing in the columns
 #between the sample identifier and the disposition code, for many sample
 #entries, is the water depth in corrected meters.

#GMT DDMYY	SAMP B	SAMPLE	DISP	P CRUISE			
#TIME DATE	TZ	CODE E	IDENTIFIER	CODE LATITUDE	LONGITUDE	C	LEG-SHIP

**** Underway Data Curator - S. M. Smith ext. 42752 ***

**** Log Books ***

1621 111198 0 LBUW B Underway watch log GDC 32-42.40N 117-14.18W g SNKX01RR
 0855 191198 0 LBUW E Underway watch log GDC 32-42.40N 117-14.17W g SNKX01RR

**** Sea Beam Records (vertical beam and side scan) ***

1655 111198 0 MBSR B v.beam&sidescan r-01 GDC 32-37.22N 117-14.77W g SNKX01RR
 0755 121198 0 MBSR E v.beam&sidescan r-01 GDC 32-45.45N 119-35.56W g SNKX01RR
 1716 181198 0 MBSR B v.beam&sidescan r-02 GDC 32-45.24N 119-36.02W g SNKX01RR
 0840 191198 0 MBSR E v.beam&sidescan r-02 GDC 32-42.13N 117-14.03W g SNKX01RR

**** Echo Sounder Records ***

1556 181198 0 DPR3 B Knudsen 3.5kHz r-01 GDC 32-45.83N 119-32.36W g SNKX01RR
 0840 191198 0 DPR3 E Knudsen 3.5kHz r-01 GDC 32-42.13N 117-14.03W g SNKX01RR

End Sample Index SNKX01RR