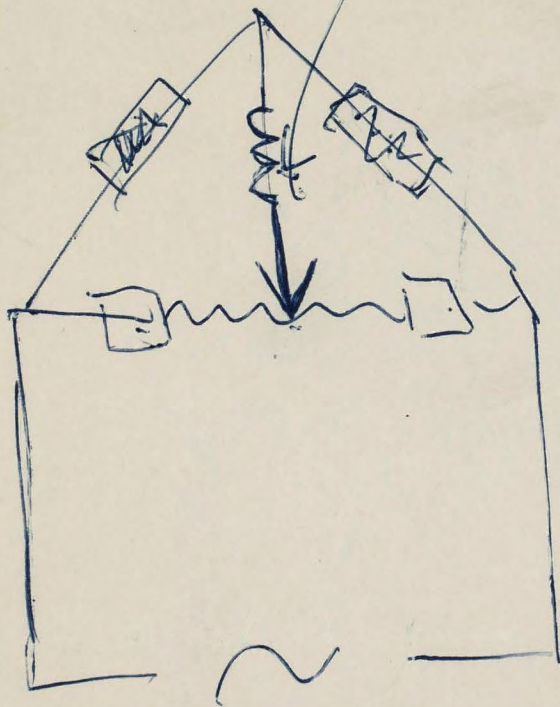
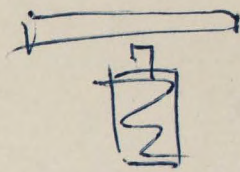
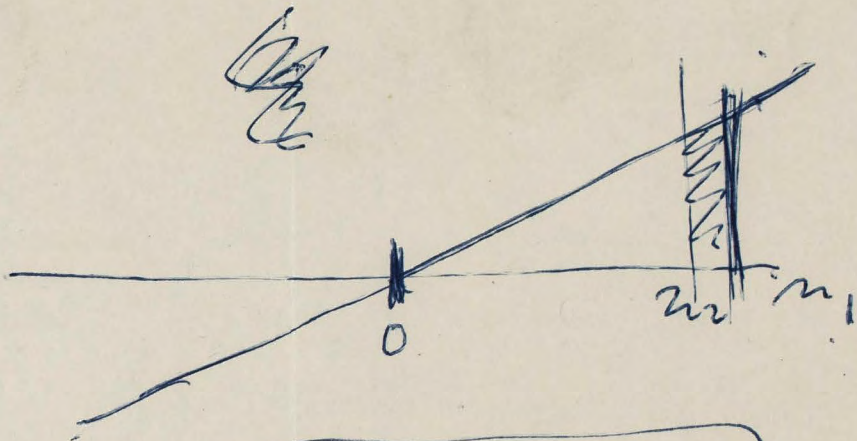


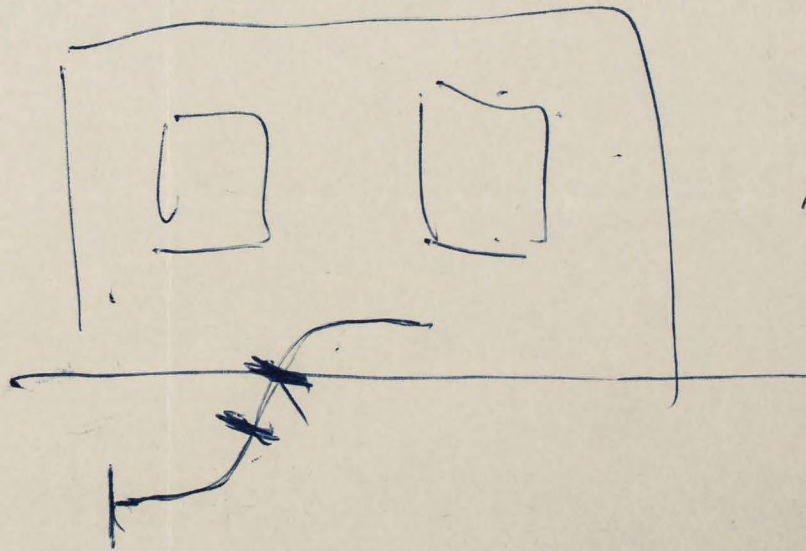
within 10%



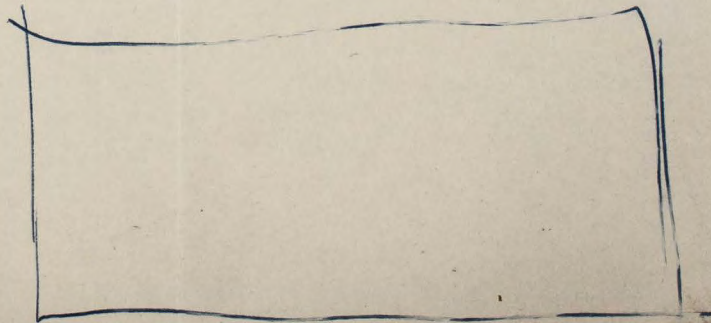
~~total~~
 1/4 x



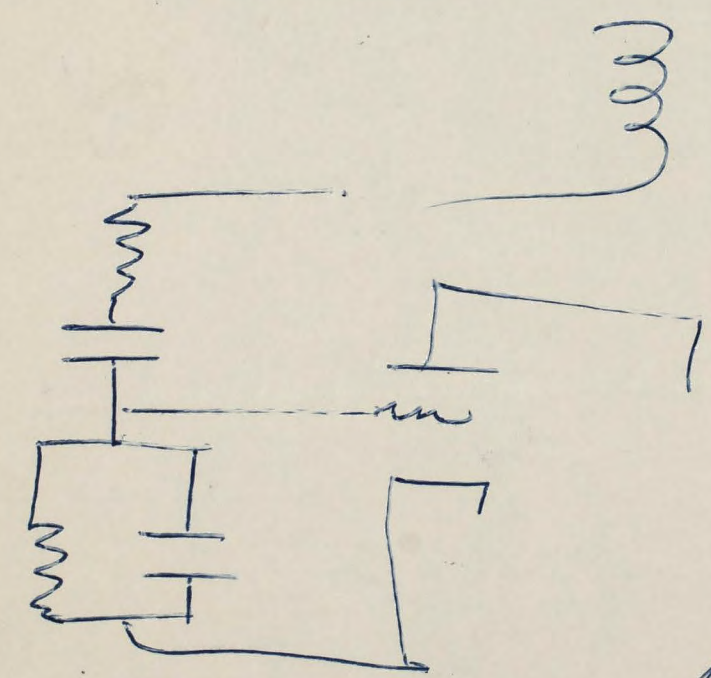
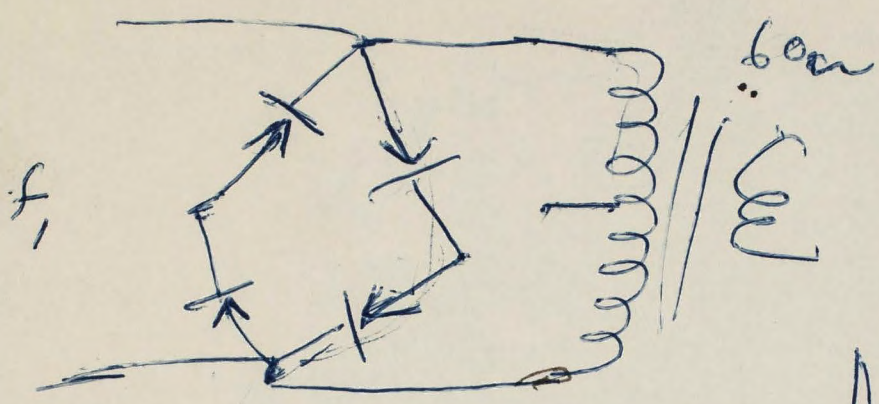
A_1
 $A_2 < A_1$
 = =



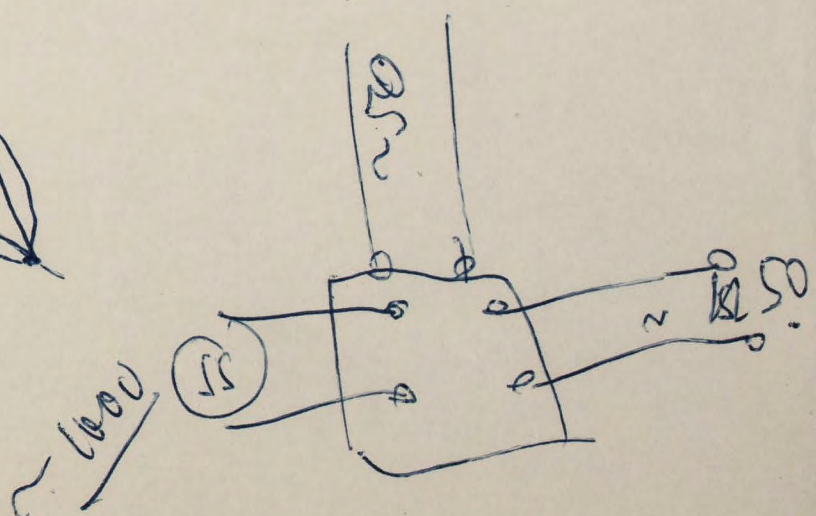
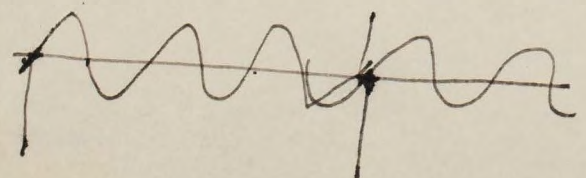
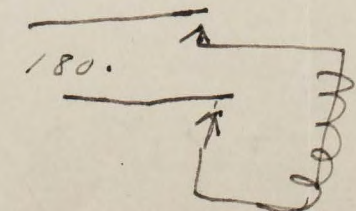
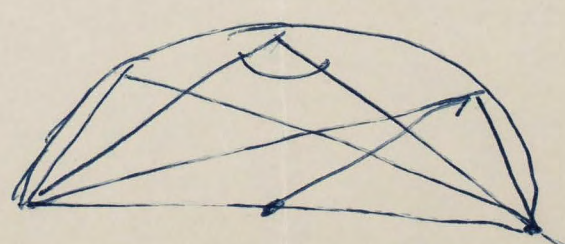
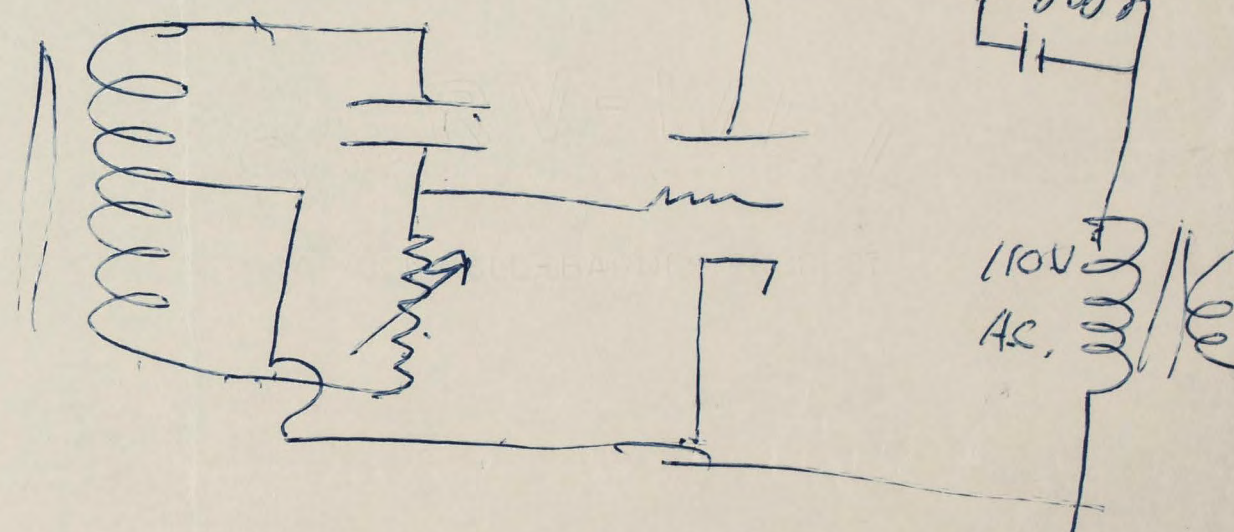
1.) ~~prop~~

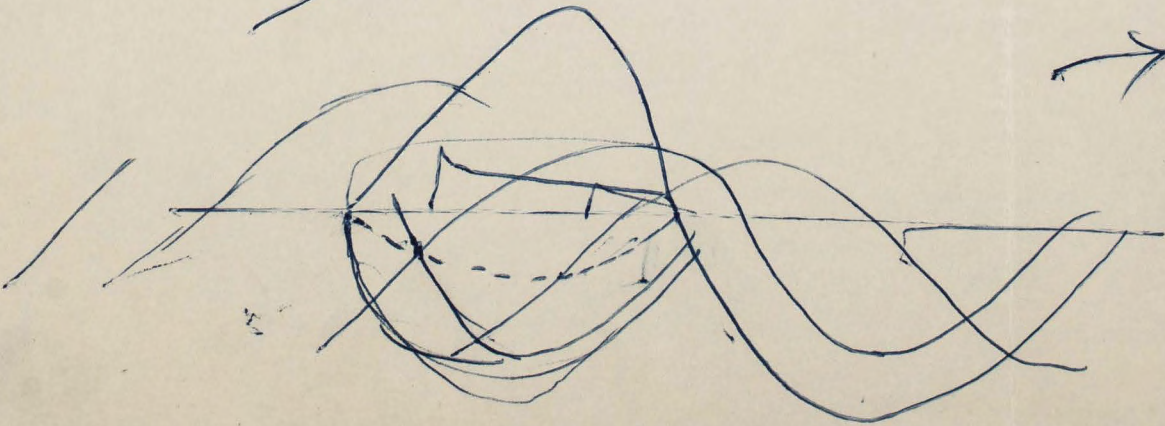
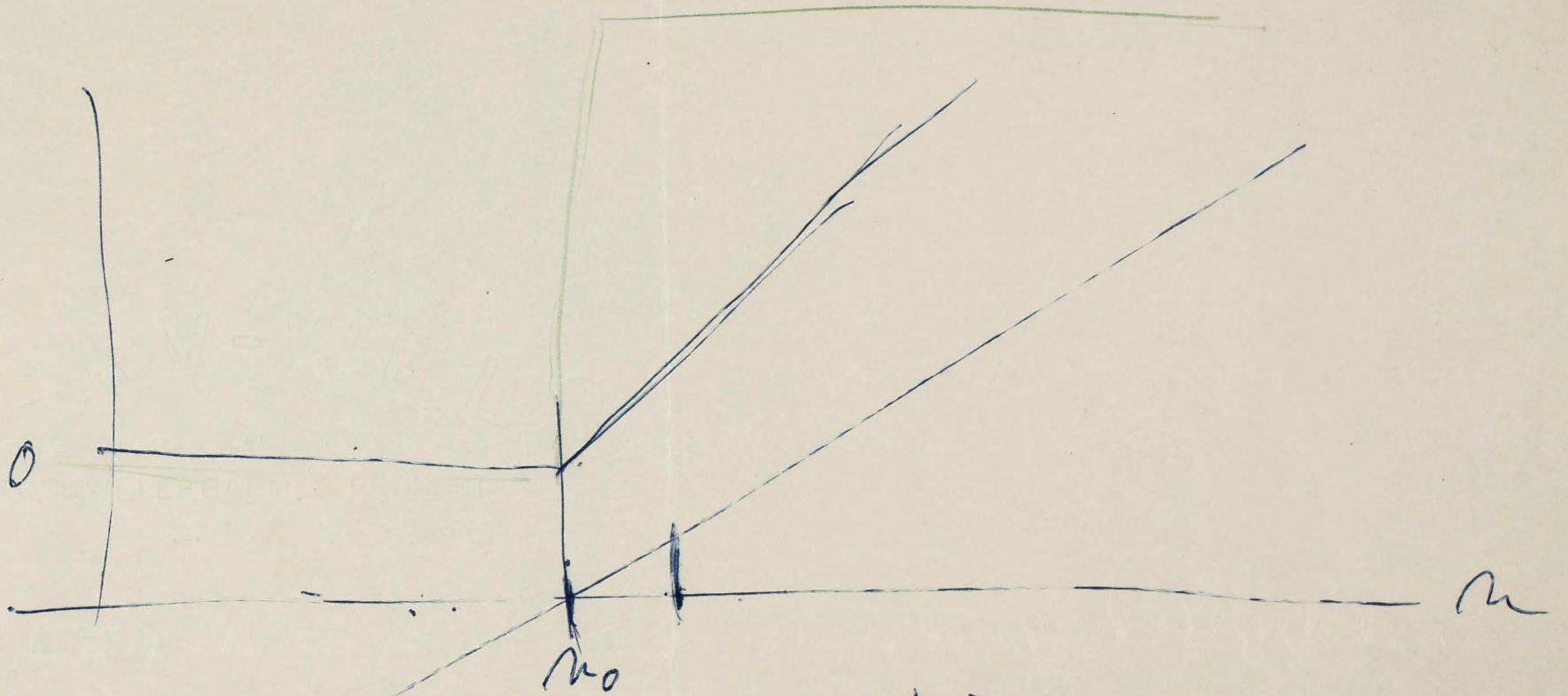


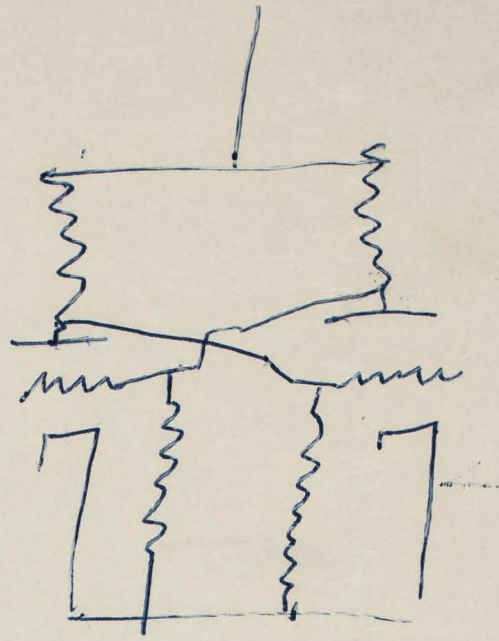
2.)



180







Mar 15/

THE QUADRANGLE CLUB
CHICAGO

Addresses:

- 1.) Howard Med School
Ender (John) Childrens
Hospital
(Louysvill Ave)
- 2.) One Memphis:
Johns Hopkins Hospital
Jay [Tissue cultures] (noquad)
Dr. Bang (Newcastle, E. E. E)
- 3.) Karle (Bethesda)
- 4.) Houle Childrens Hospital
Univ. of Penna
- 5.) Hirst, Collesinger N.Y.C.
Public Health
- 6.) Couns, Dept of Pathology
Howard Med
School

~~Prof Werner - ref by Wirth
Benton House
3052 S Gatten~~

~~Leaves Thursday
Free Wednesday afternoon~~

John A Mint
Amer Med A
Wh 4-1500

~~1/23/51~~

Fred Sanson 3381
Physiology Seminar

1/23

1.) 50 mgm theophylline B/τ

0.03 $\mu\text{m/l}$ NH_4Cl

$\tau = 4 \text{ hrs}$

is Nitrogen limited
selective against microbes

inhibitory

2.) ~~B~~ $B/\tau/f$

2 indep. arrays for each point

$\tau = 2 \text{ hrs}$

hypophane
500 $\mu\text{g/l}$

$\tau = 6 \text{ hrs}$

switch to

150 mg theophylline

is τ independent of α

3.) no theophylline

$\tau = 6 \text{ hrs}$ B

Nitrogen limitation

0.03 $\mu\text{m/l}$ NH_4Cl

~~4a~~

4a

B/τ

500 $\mu\text{g/l}$

4b

1000 $\mu\text{g/l}$

} 6 hrs

$\text{O}_2 + \text{CO}_2$

5.)

Adrenaline

B/1e/f

150 mgm

500 mgm

T=6 hrs

T=6 Plus

15 mgm 100 mgm
100 mgm 15 mgm

→
↓

P = 5
P = 6

100 mgm
15 mgm

150 mgm 100 mgm

is 1/2 the extent of

T = 6 hrs

is 1/2 the extent of

100 mgm 15 mgm

100 mgm 15 mgm

100 mgm 15 mgm

15 mgm

100 mgm

100 + 15

100 mgm

15 mgm

~~Star~~

Date	Density	τ	mv	
4/21/50	$5 \cdot 10^8$	6 hr	7.3×10^{-8}	7.3
5/10/50	$5 \cdot 10^8$	6 hr		
4/30/50	$5 \cdot 10^8$	2 hr	1.8×10^{-8}	7.6
5/3/50	$5 \cdot 10^8$	6 hr	7.6×10^{-8}	
5/8/50	$5 \cdot 10^8$	2 hr	2.4×10^{-8}	
5/14/50	$5 \cdot 10^8$	2 hr	2.4×10^{-8}	
5/21/50	10^8	6 hr	6.3×10^{-8}	7.4
5/25/50	$5 \cdot 10^8$	6 hr	8.4×10^{-8}	
5/25/50	$5 \cdot 10^8$	2 hr	2.56×10^{-8}	
			$29.6/4 = 7.4$	
7/19/50	$2.5 \cdot 10^8$	4 hrs	$5.8 \cdot 10^{-8}$	5.8
L	$2.5 \cdot 10^8$	4 hrs	$6.1 \cdot 10^{-8}$	6.1
42	$2.5 \cdot 10^8$	4 hrs	$5.85 \cdot 10^{-8}$	5.8
21	"	4 hrs	$4.8 \cdot 10^{-8}$	4.8
				$22.5/4 = 5.6$

~~Strengths 4/5~~

$\tau = 5$	(150 μm^2)	14×10^{-8}	}
$\tau = 3.3$		$10.5 \cdot 10^{-8}$	
$\tau = 4.4$		15.7×10^{-8}	
$\tau = 2$		10.7×10^{-8}	

Death Proportion ~~Pa~~ ~~A~~
 $n - N$

Total Proportion n

$$\alpha(c) - K = \frac{w}{V} \quad (1.)$$

K death rate

$$a = c + nQ \quad (2.)$$

$$NK = (n - N) \frac{w}{V} \quad \text{3.)}$$

Number says

$$\frac{N}{n} = \frac{1}{1 + cK}$$

diabecco

2000 ml

Thymine
Xanthine
Valine
Methionine

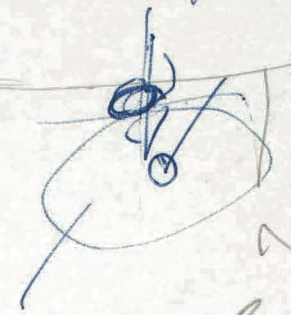
~~2000~~
some lactate
for methionine
and valine

T₂

Graham
Forester

50 ml

F₂₃



Phers:

Rotter



Holland
fulpa substituted
unpaired
with W double

3

Spiegel

Proc. of the Federation
of Business.

CHICAGO
THE QUADRANGLE CLUB

Spiegel

UCL 5544

(OVER)

The University Library

Call No. 7C
48
547

CALL SLIP

Vol.

Author Solpe

Title Stress

Drawn by L. Lerman

Address Institute of Radio -
biology & Biophysics

MAKE OUT A SEPARATE SLIP FOR EACH TITLE

This book must be returned to Counter 1 before leaving the building. If wanted for home use present the book with your Identification Card to the attendant at Counter 1 for charging.