

*Report and Index of
Underway Marine Geophysical Data*

Cook Expedition

Leg 20

(COOK20MV)

R/V Melville

(Issued April 2002)

Ports:

Lyttleton, New Zealand (7 March 2002)

to

Apia, Western Samoa (22 March 2002)

Chief Scientist: Stephen P. Miller
Scripps Institution of Oceanography
spmiller@ucsd.edu

Computer Tech - John Chatwood

Post-Cruise processing and report preparation by
Shipboard Technical Support Group,
Scripps Institution of Oceanography
La Jolla, CA 92093-0223

NOTE: This is an index of underway geophysical data edited and processed after the completion of the cruise leg and is intended primarily for informal use within the institution. This document is not to be reproduced or distributed outside Scripps without prior approval of the chief scientist or the Shipboard Technical Support Group, Scripps Institution of Oceanography, La Jolla, California 92093-0223.

GDC Cruise ID# 295

*Report and Index of Navigation
and Underway Geophysical Data*

Processed by the Shipboard Technical Support Group
Scripps Institution of Oceanography

Contents:

Index Chart - gives track of cruise leg, dates, ports, and mileage of each type of data collected.

Track Charts- annotated with dates and hour ticks

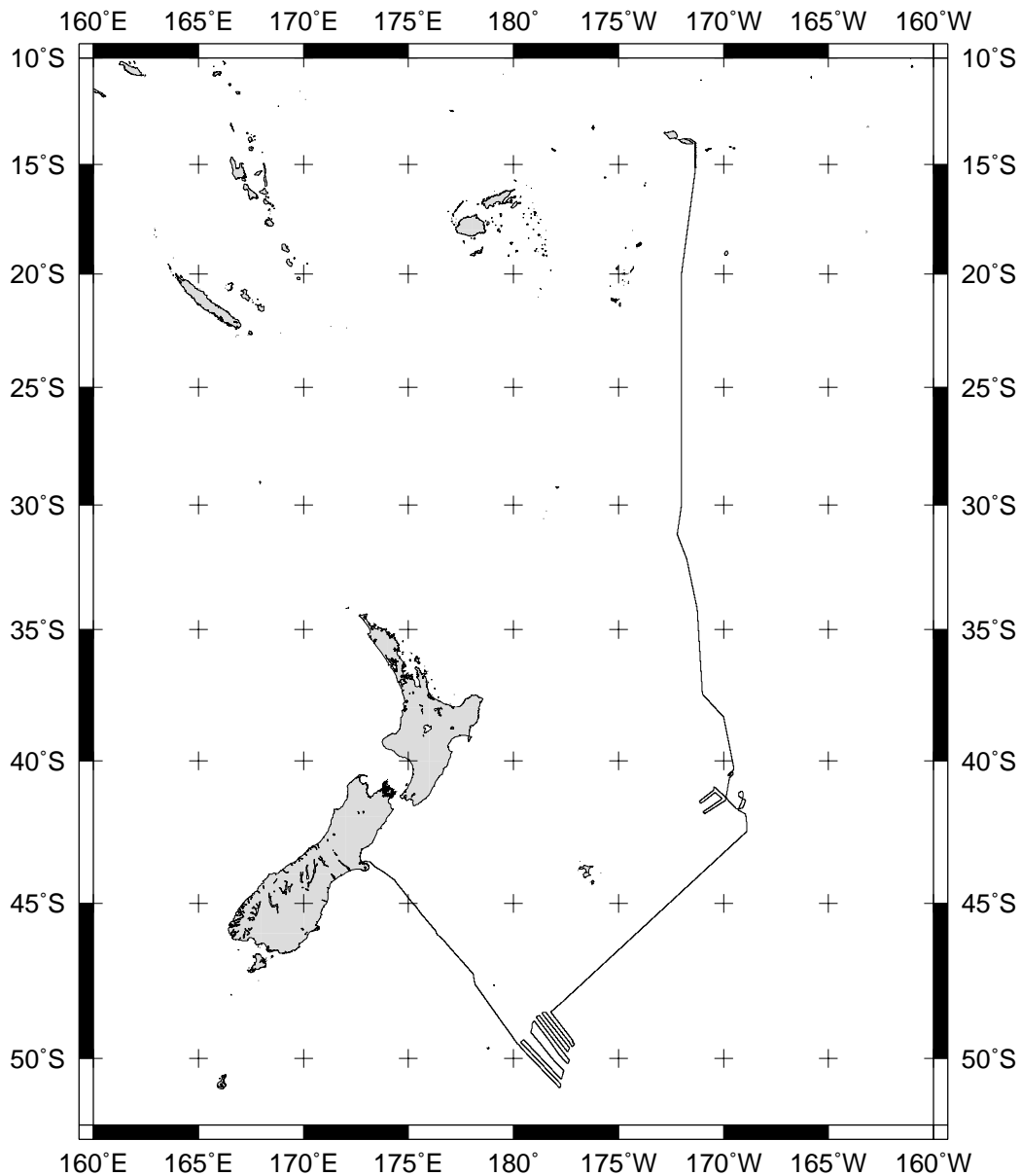
Profiles - depth, magnetic and gravity free air anomaly vs. distance. (Sections of track with seismic reflection data have a wide black line along the bottom of the profile.)

Sample Index - list of begin/end times and positions of all underway records as well as samples and measurements from other disciplines collected on the leg.

NOTE:

For information on the availability of this current digital data as well as archived digital data contact Stephen P. Miller, Geological Data Center, Scripps Institution of Oceanography, La Jolla, California 92093-0220 Phone: (858)534-1898, internet email: spmiller@ucsd.edu; or his Website: <http://SIOExplorer@ucsd.edu>

Rev 6/2001



COOK EXPEDITION LEG 20 (COOK20MV)

=====

CHIEF SCIENTIST: Stephen P. Miller, Scripps Institution

PORTS: Lyttleton, New Zealand - Apia, Western Samoa

DATES: 7 - 22 March 2002

SHIP: R/V Melville

TOTAL MILEAGE OF UNDERWAY DATA COLLECTED

Cruise-4232 miles

Magnetics-3942 miles

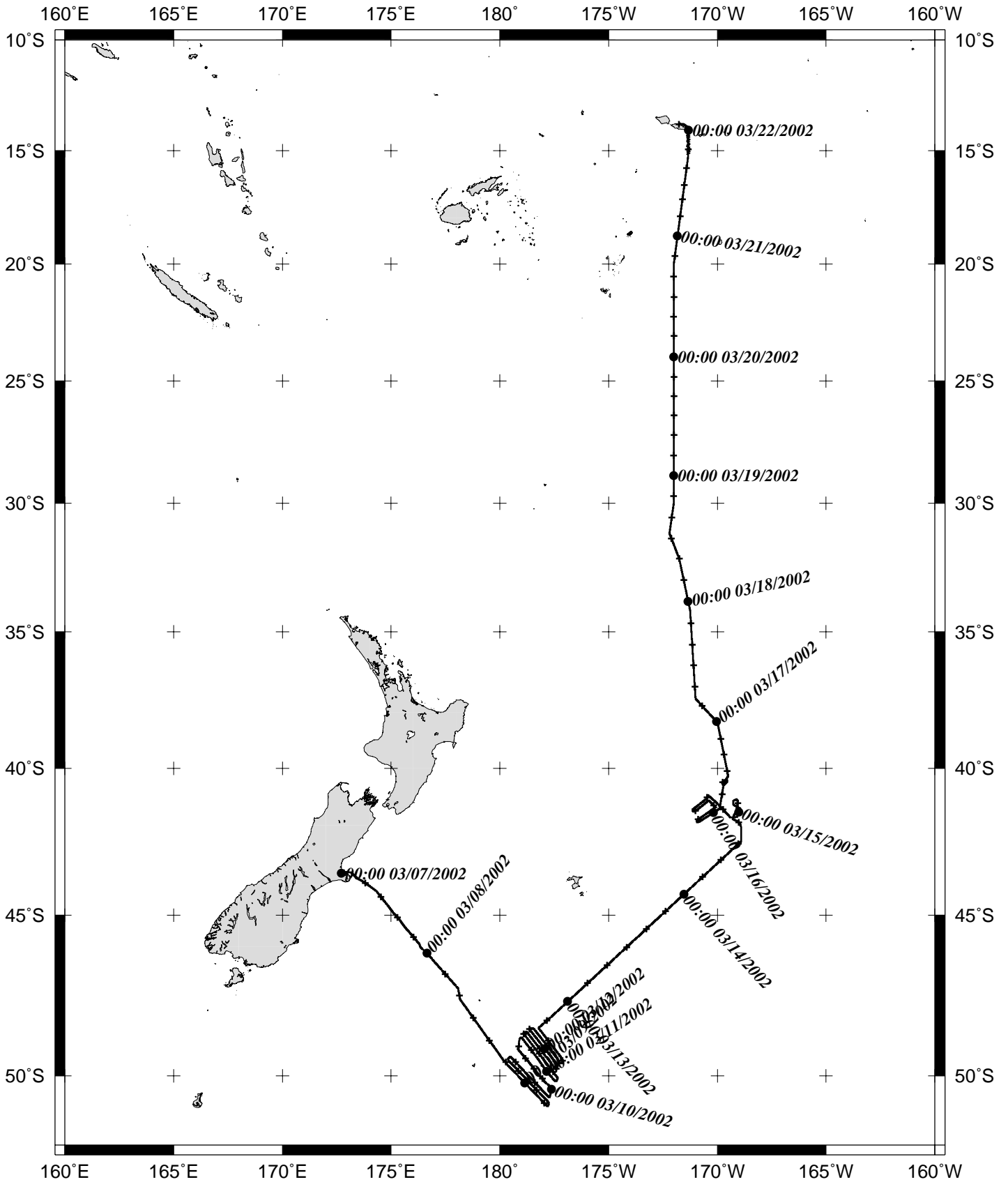
Bathymetry-4122 miles

Seismic Reflection-none collected

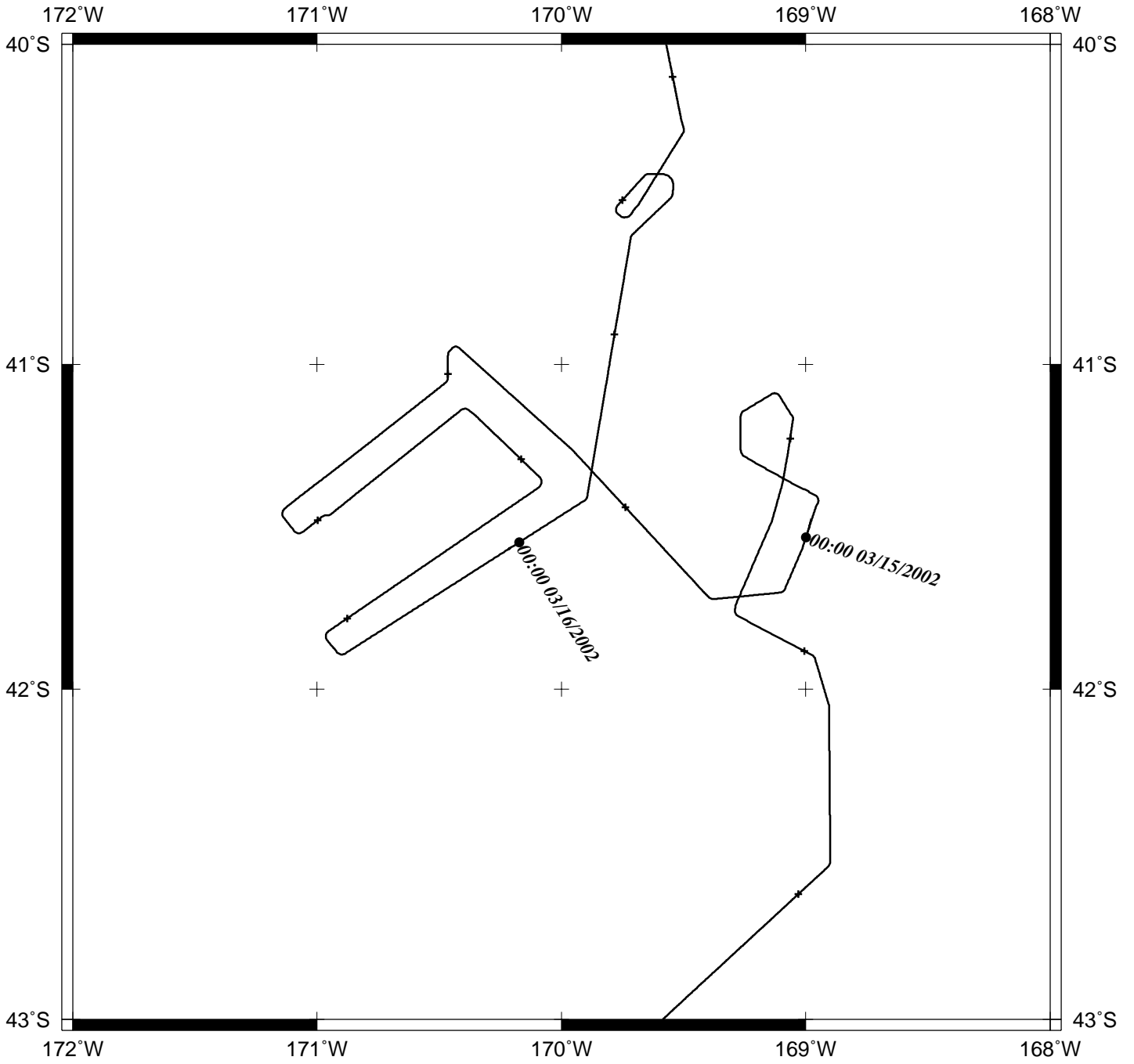
Multibeam-4122 miles

Gravity-none collected

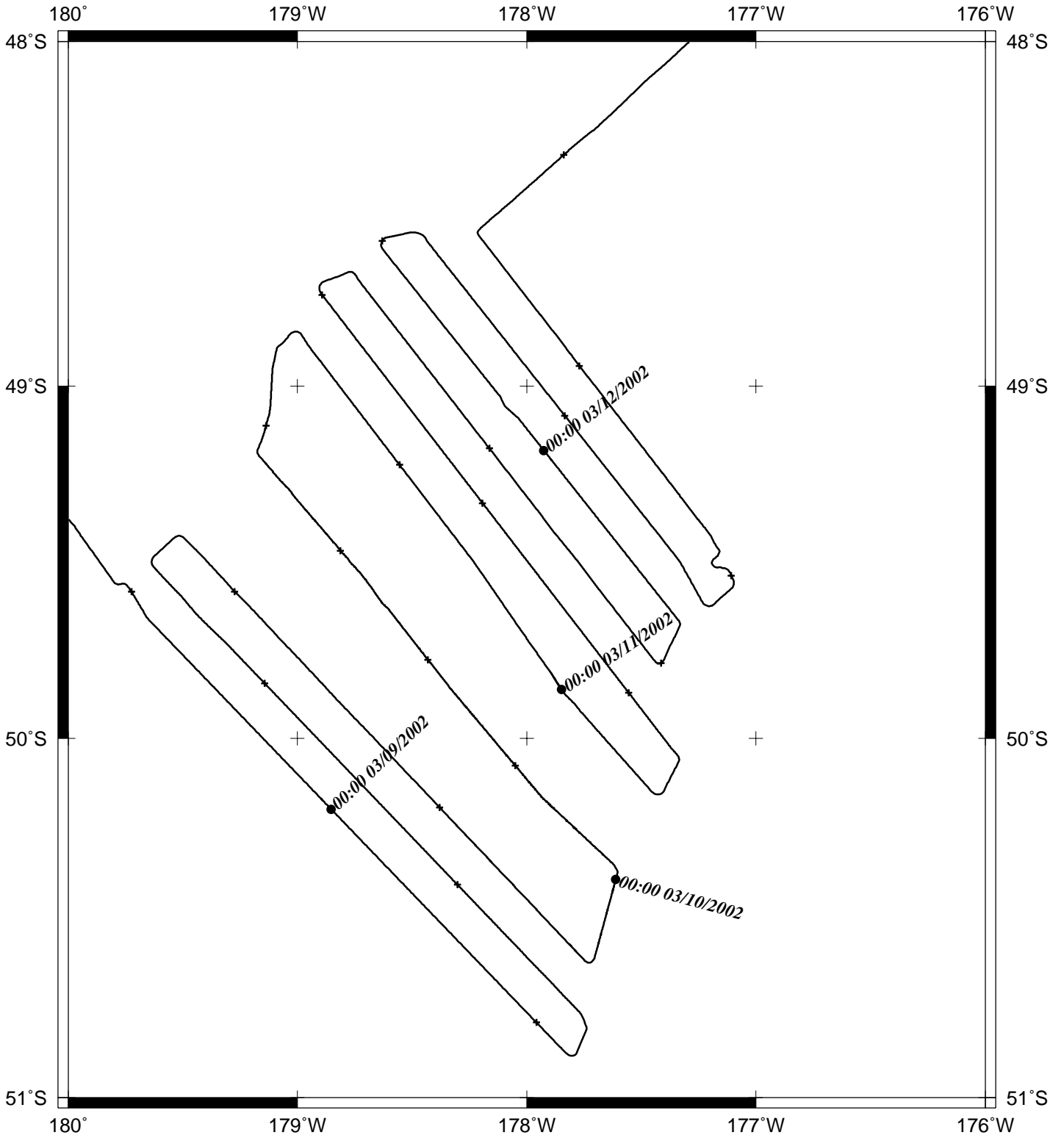
COOK20MV

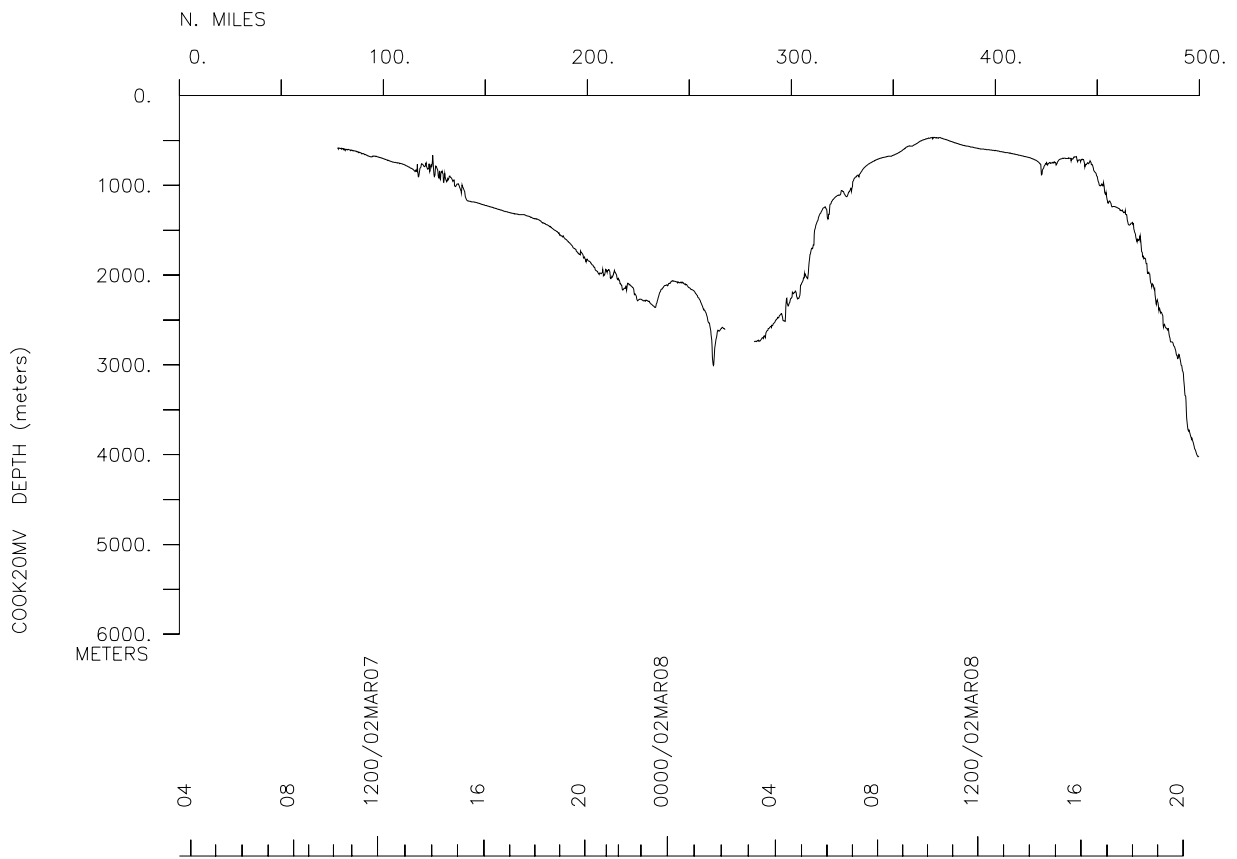
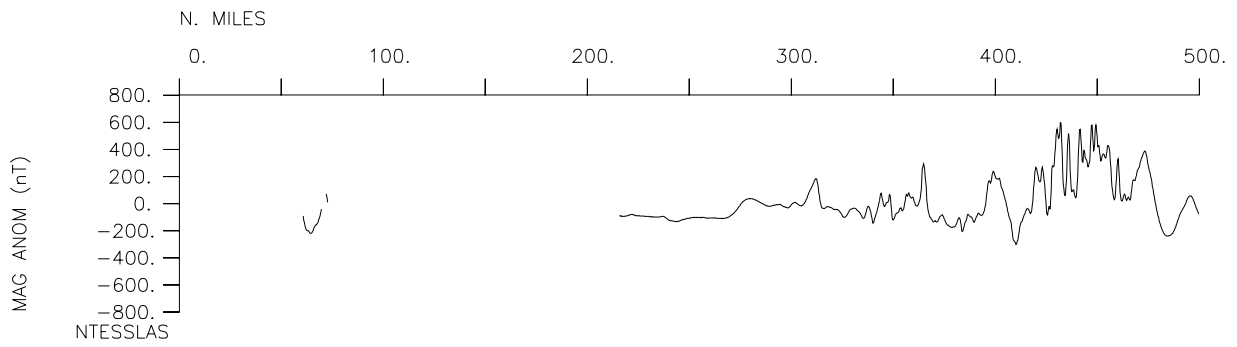
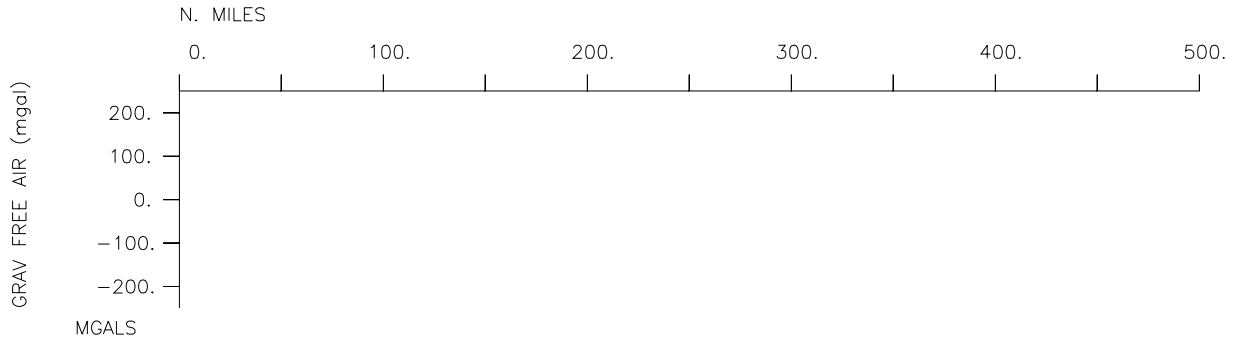


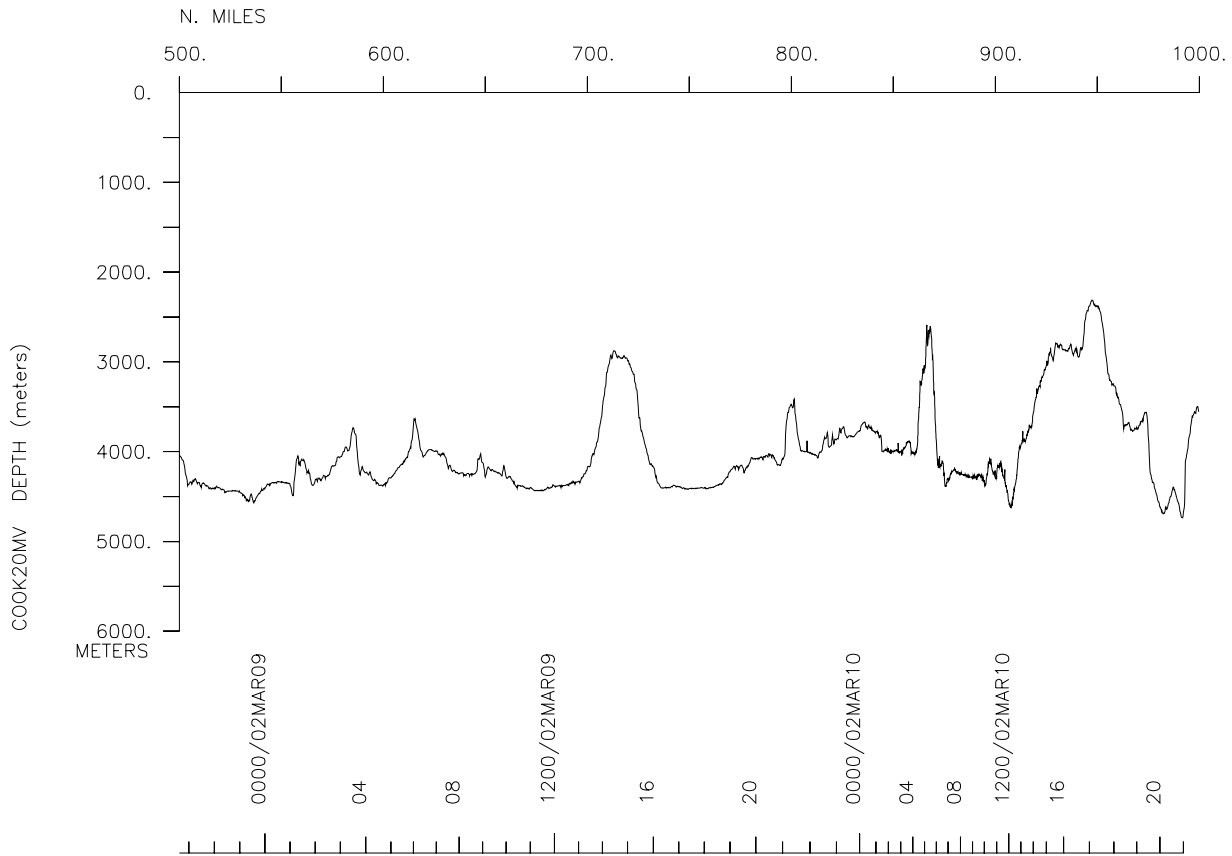
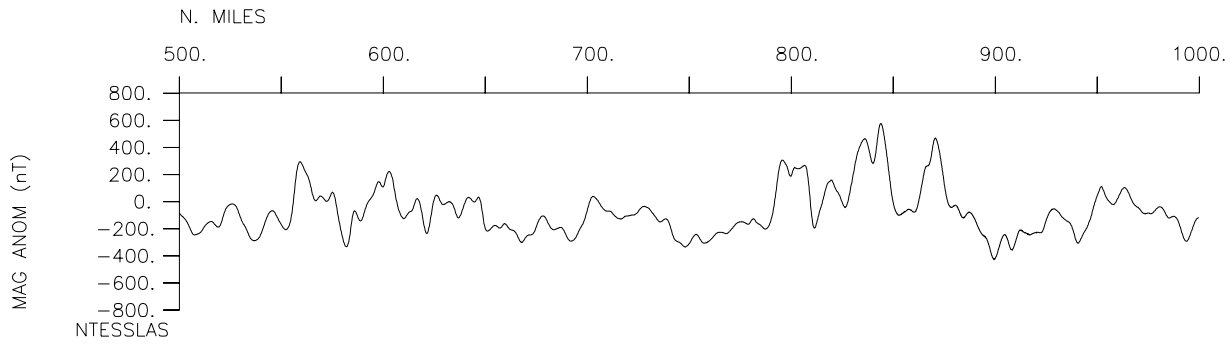
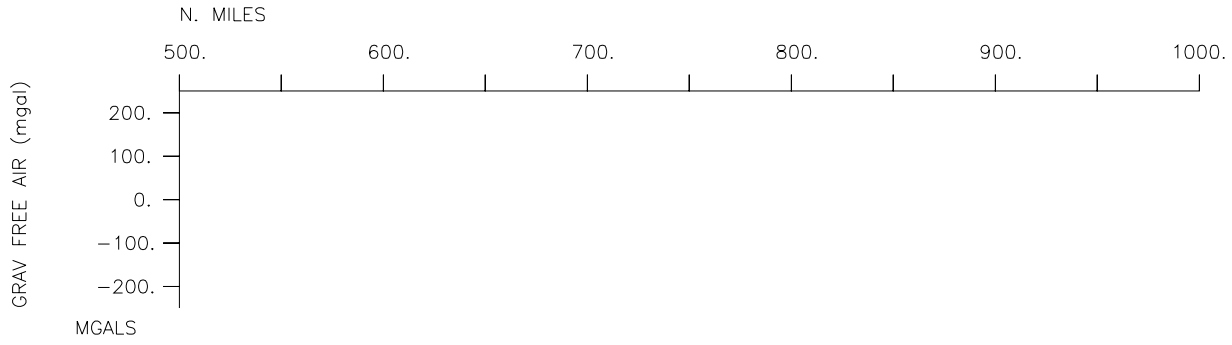
COOK20MV.survey.north

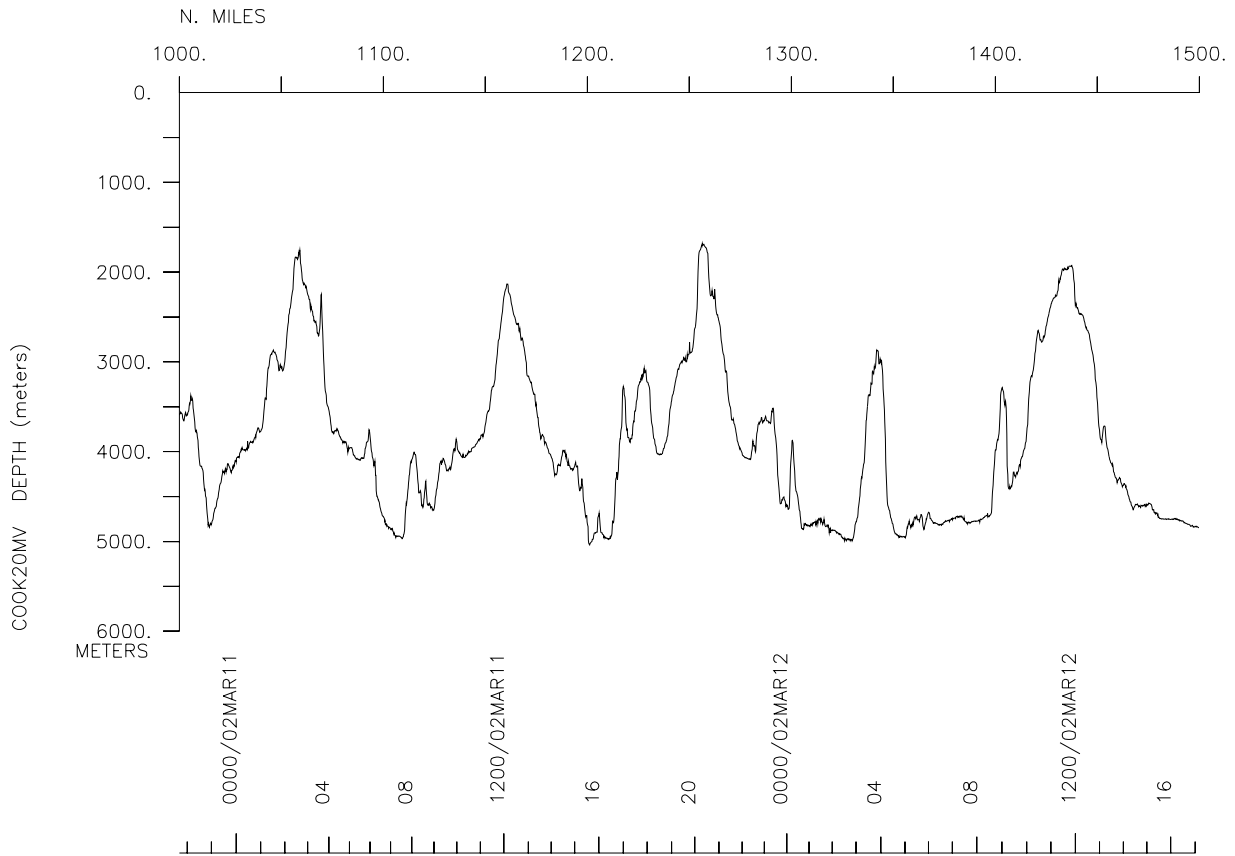
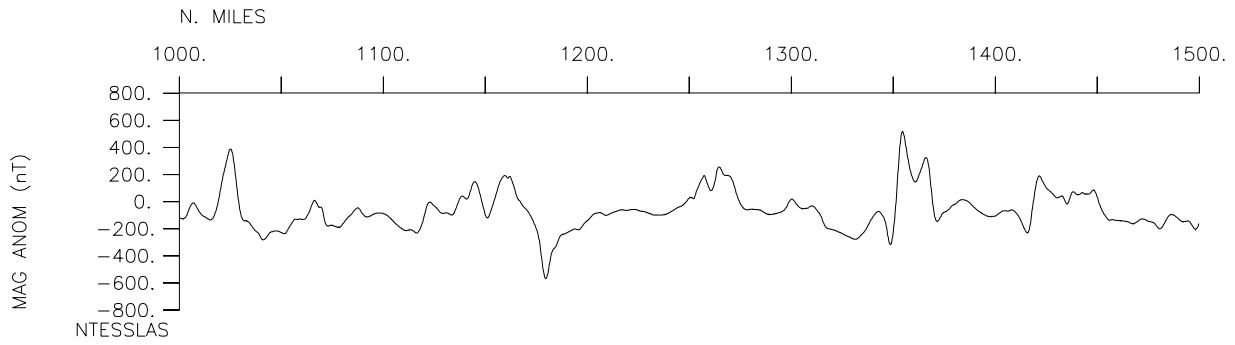
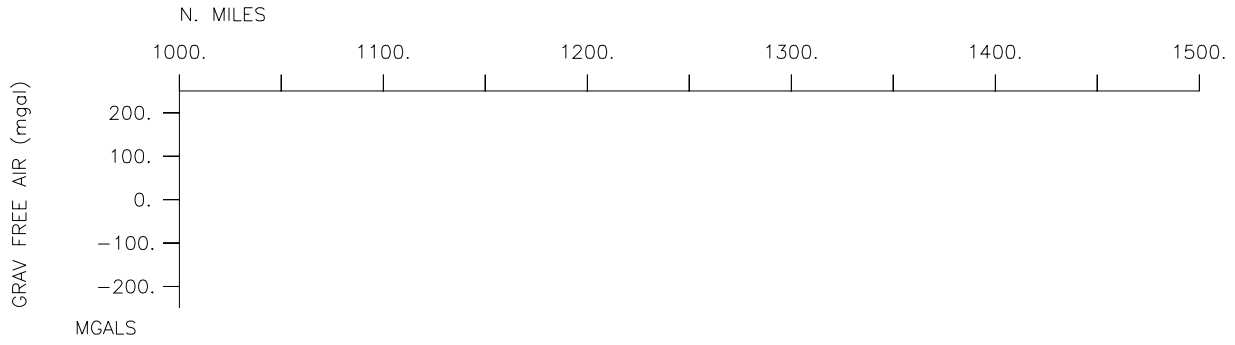


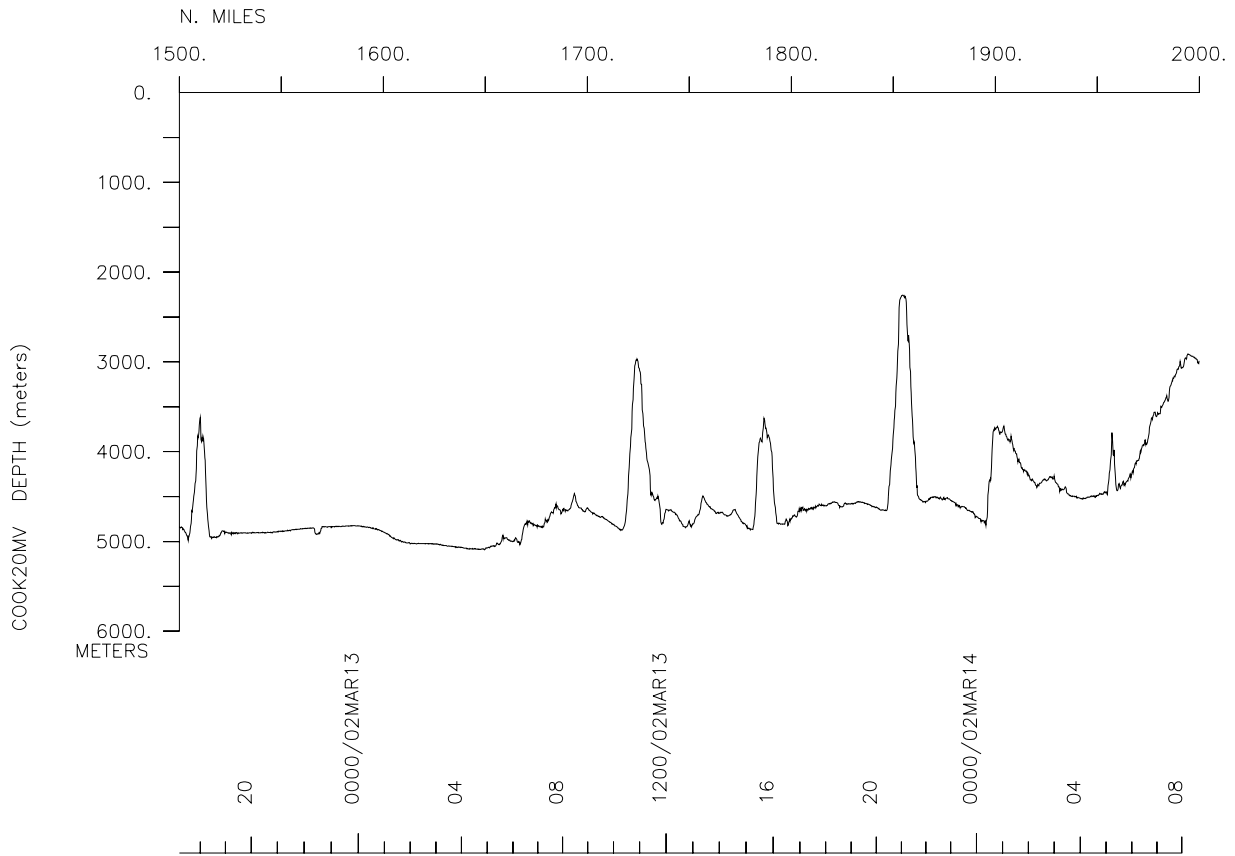
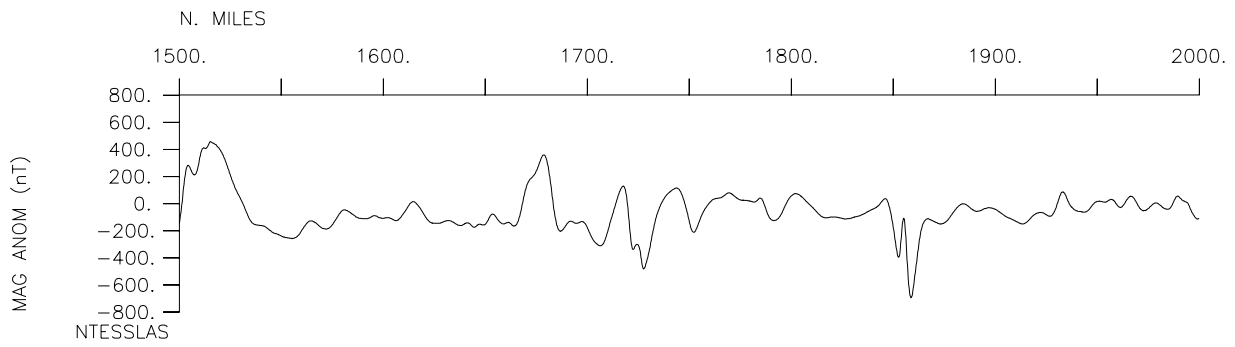
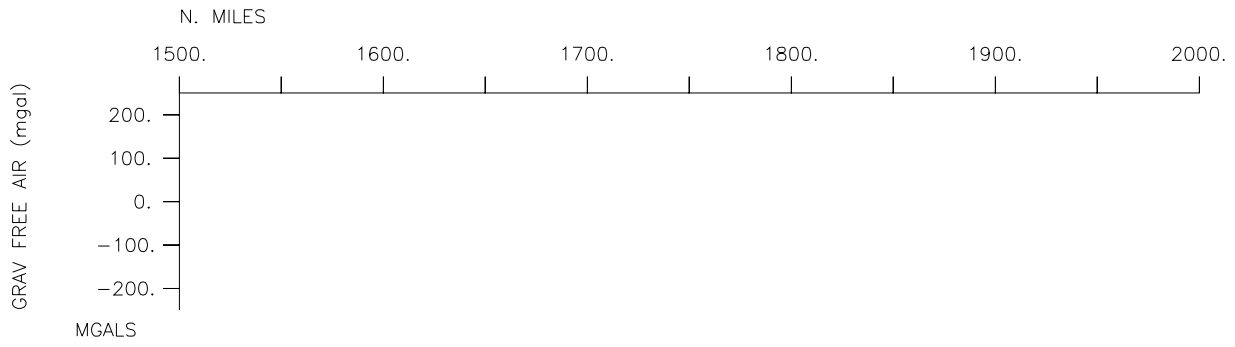
COOK20MV.survey.south

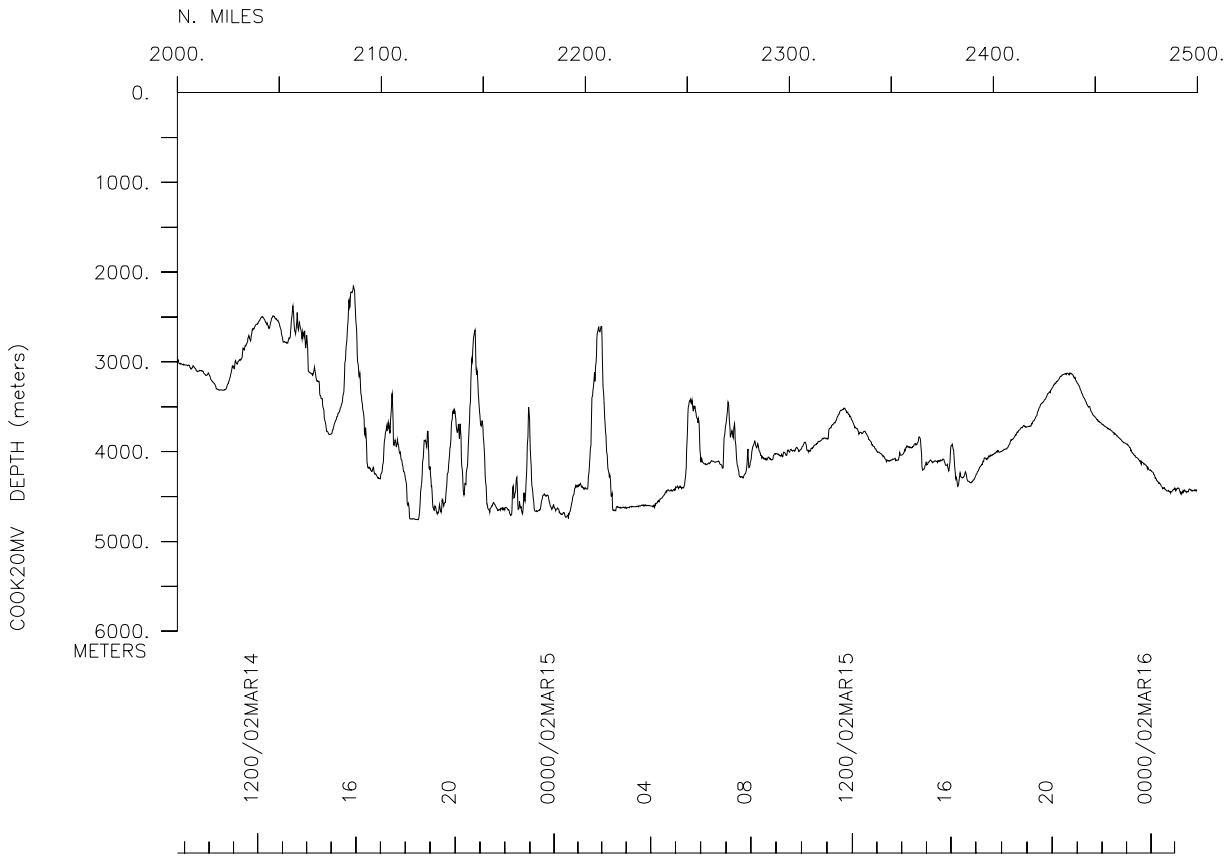
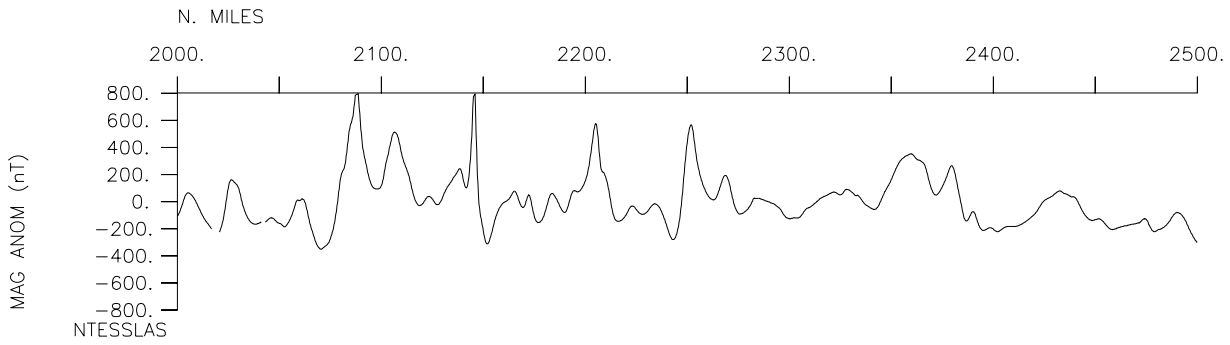
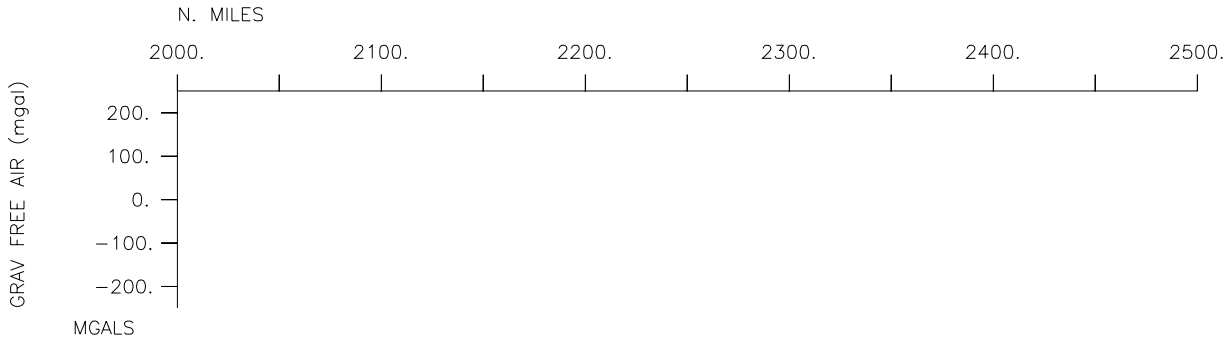


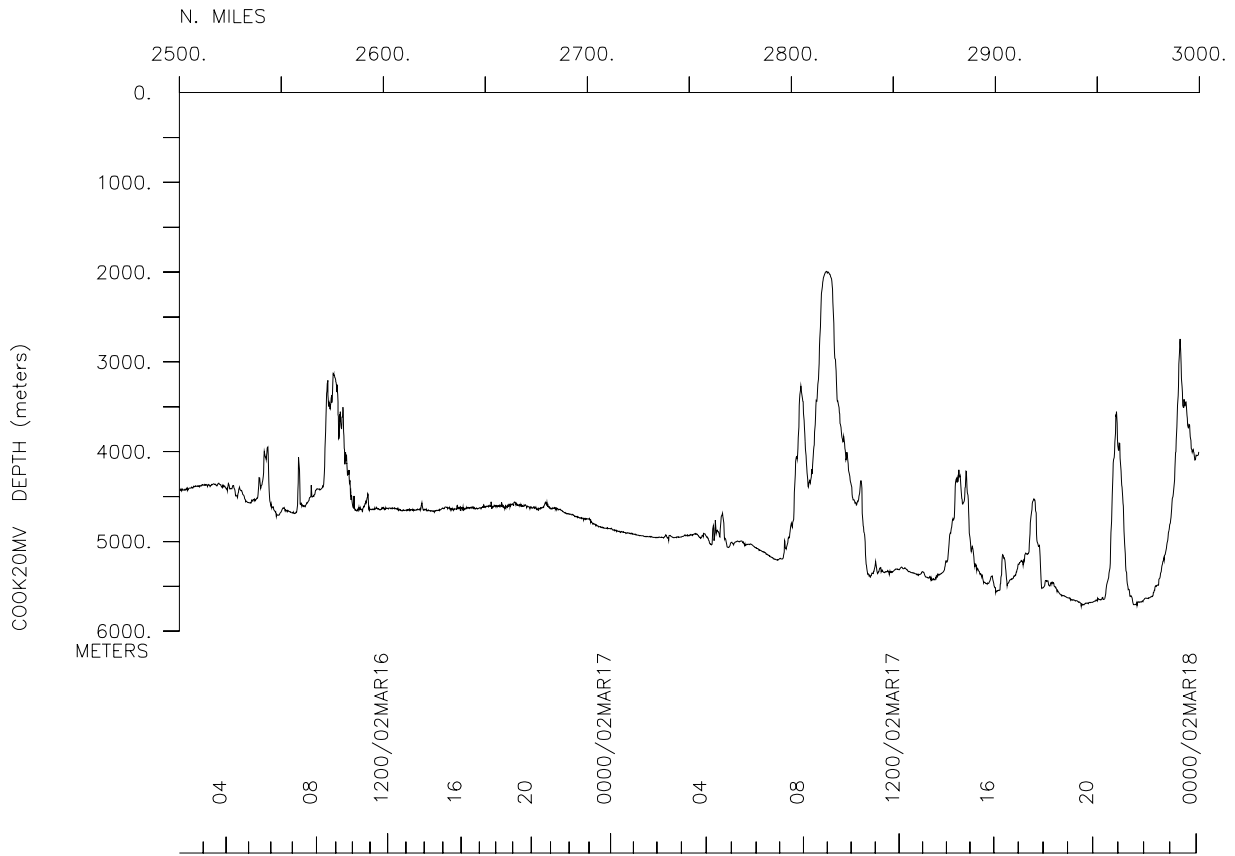
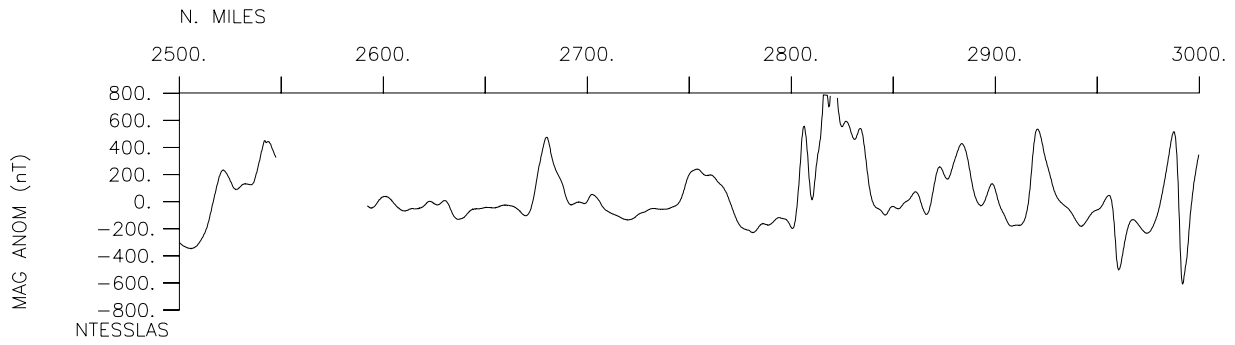
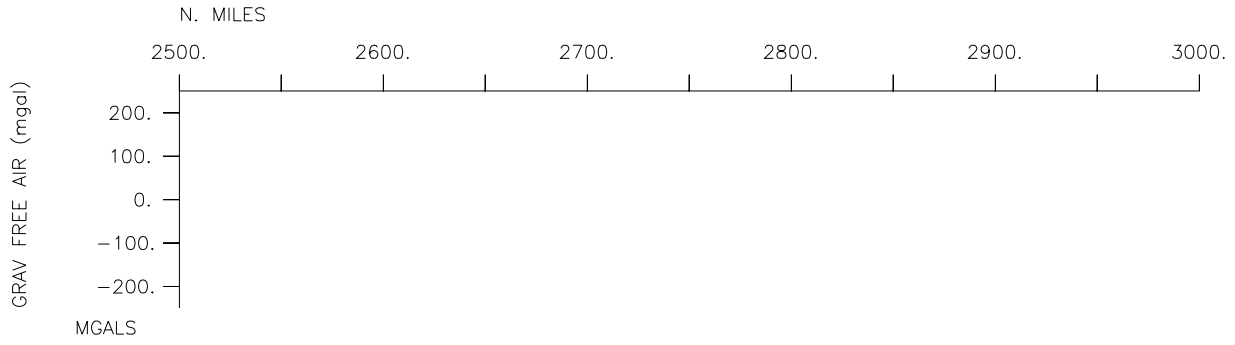


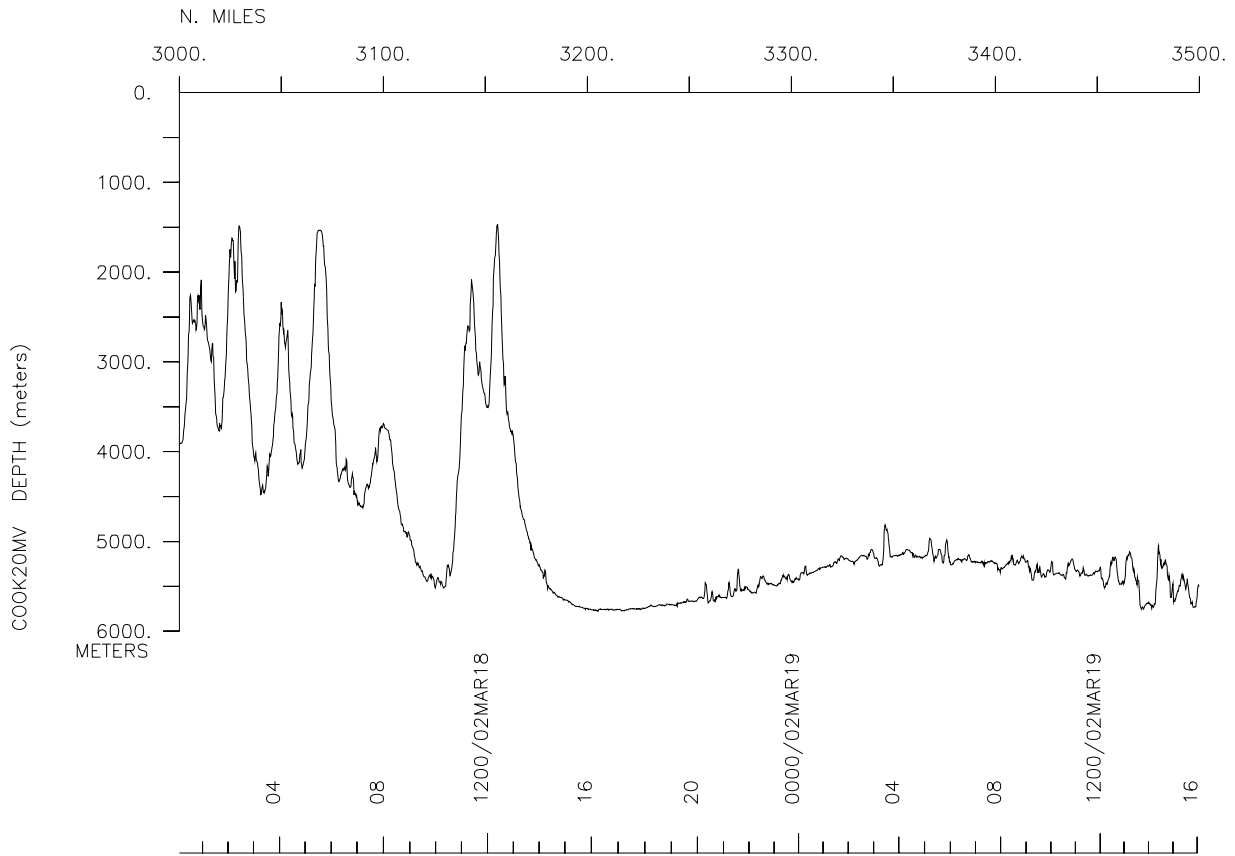
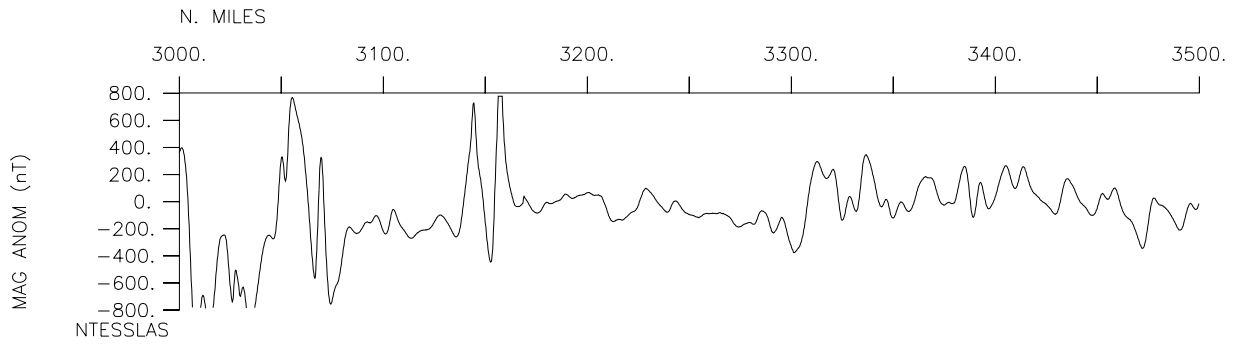
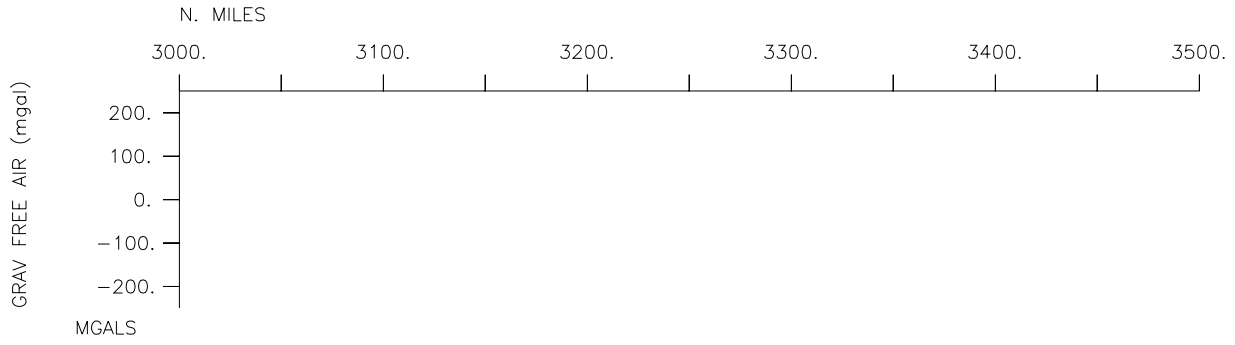


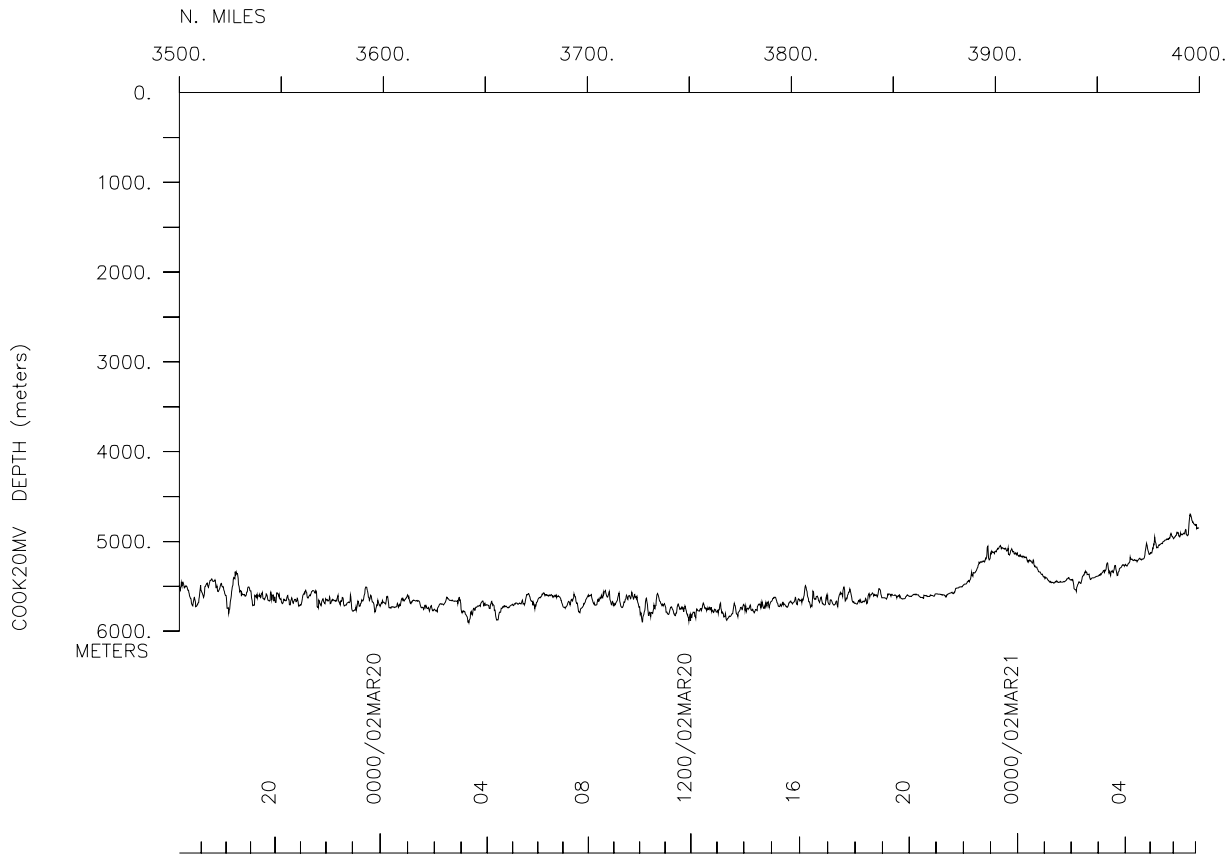
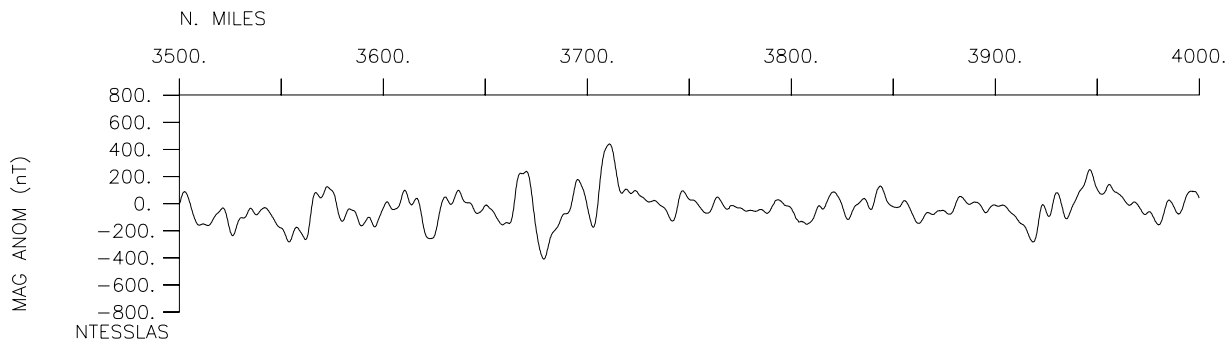
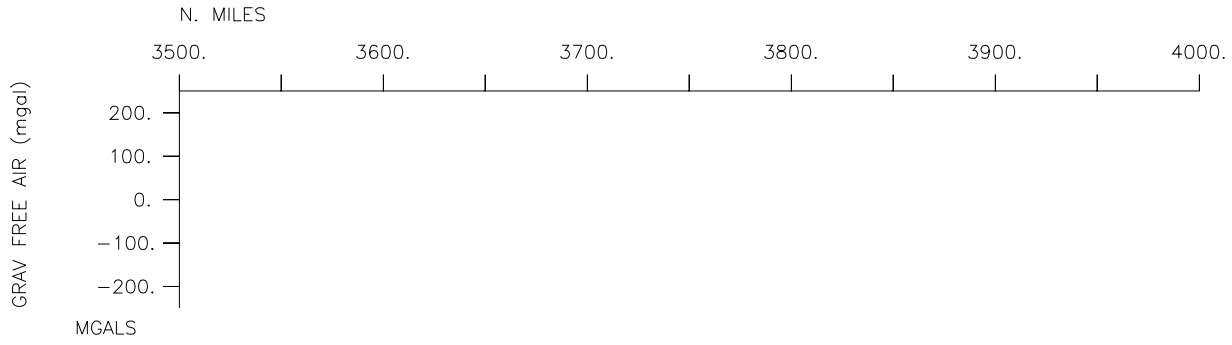


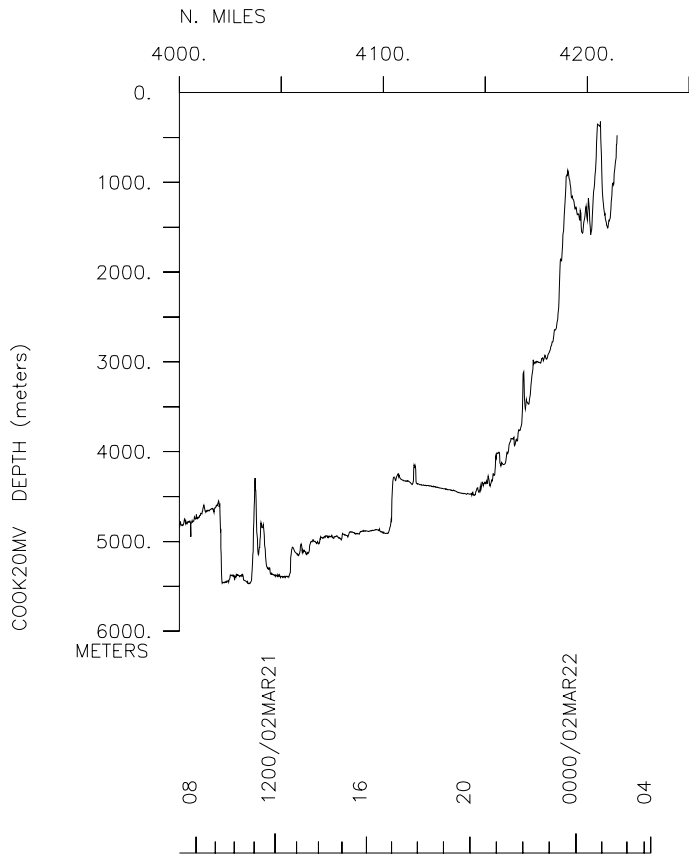
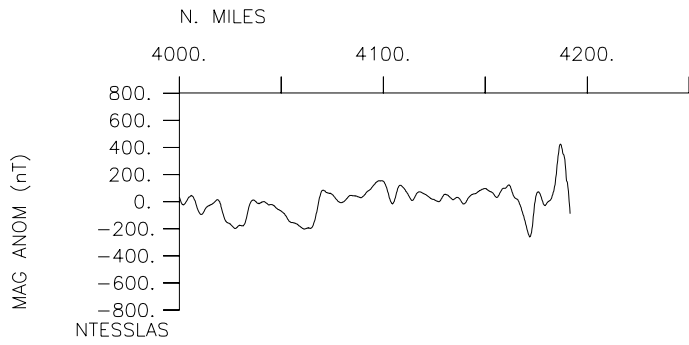
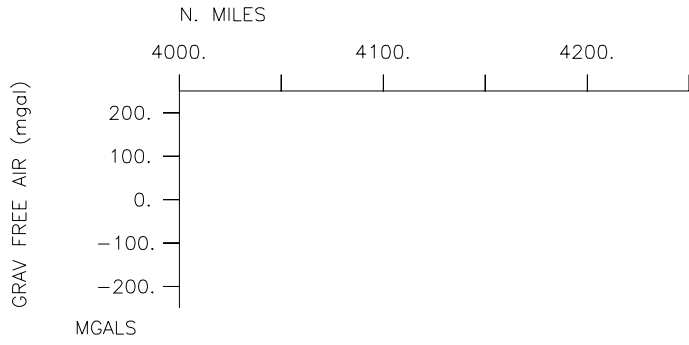


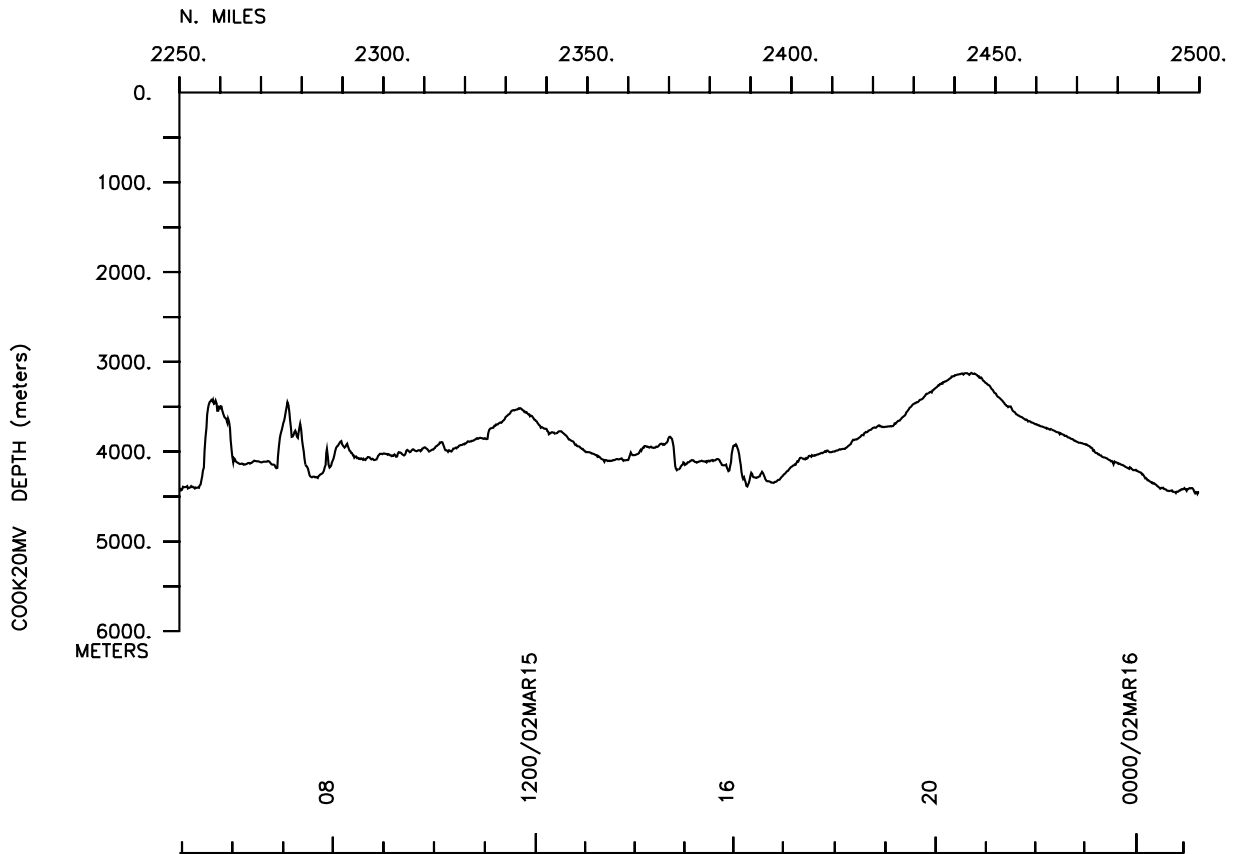
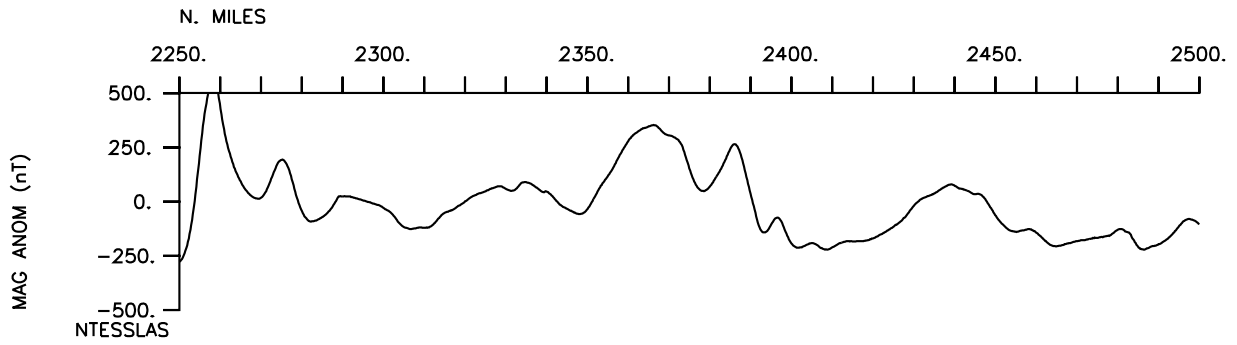
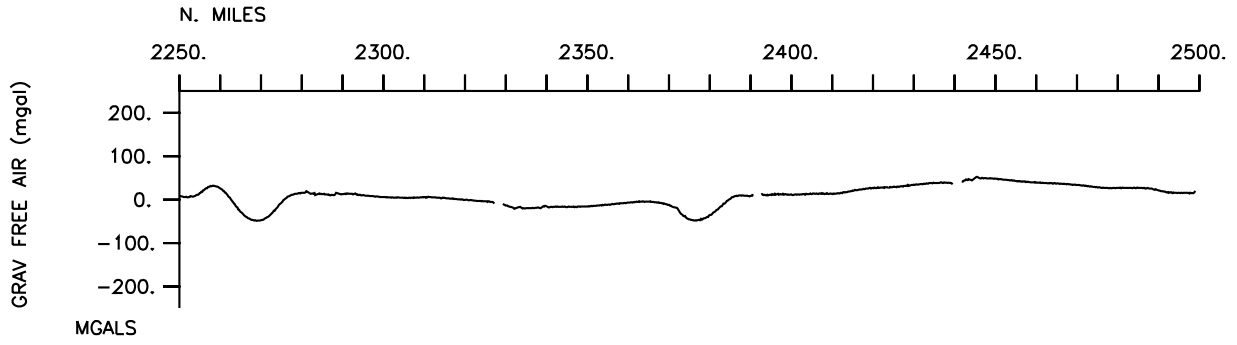


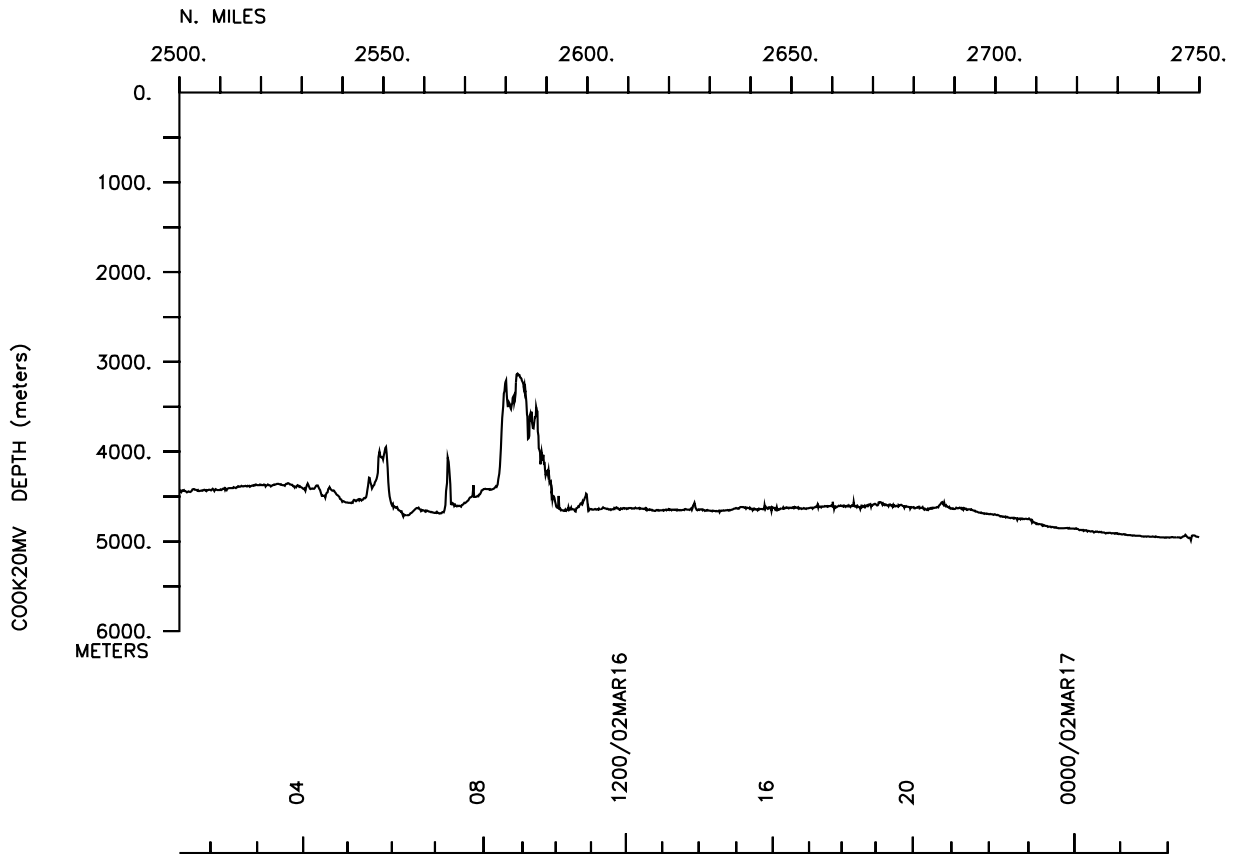
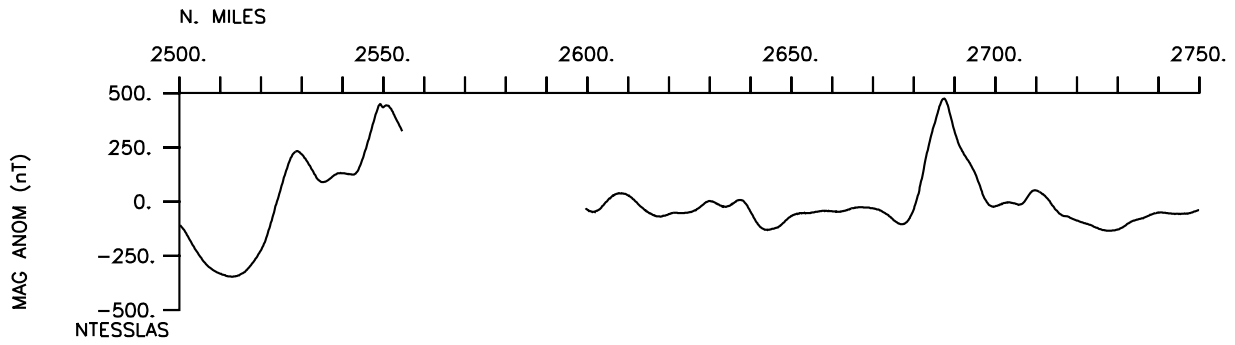
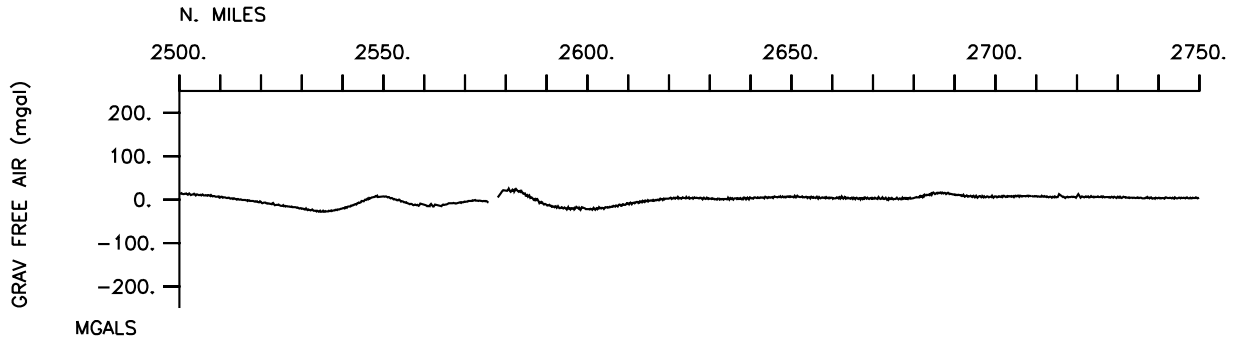


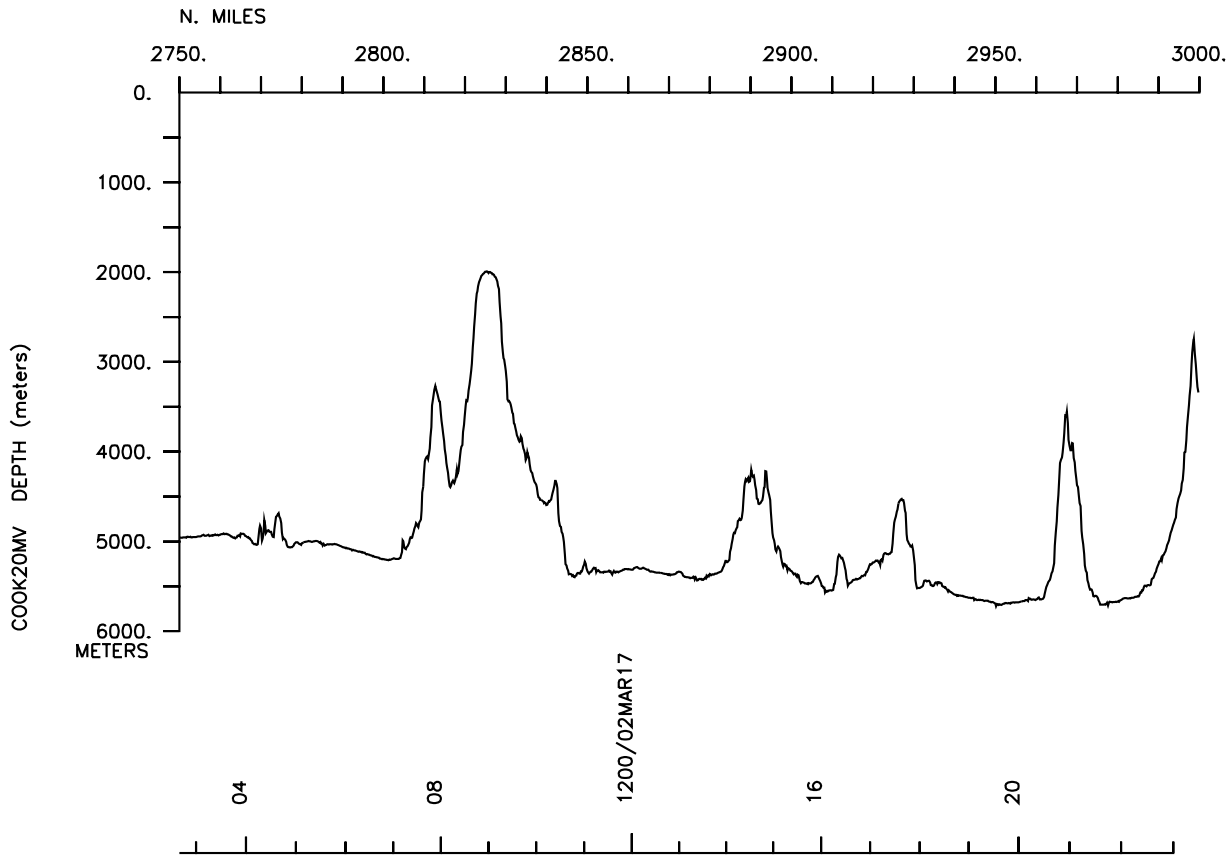
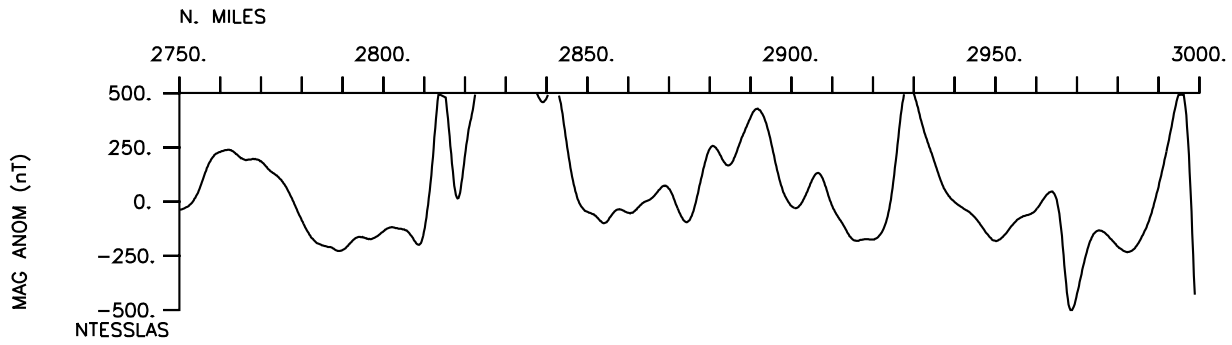
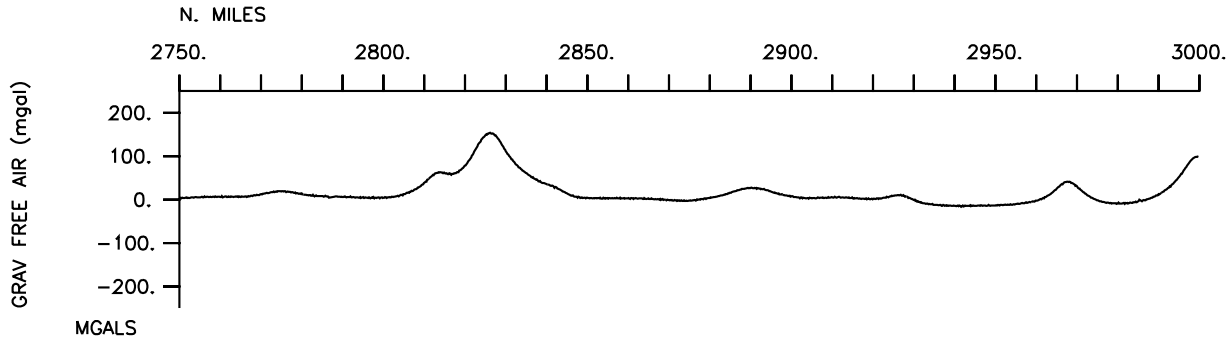


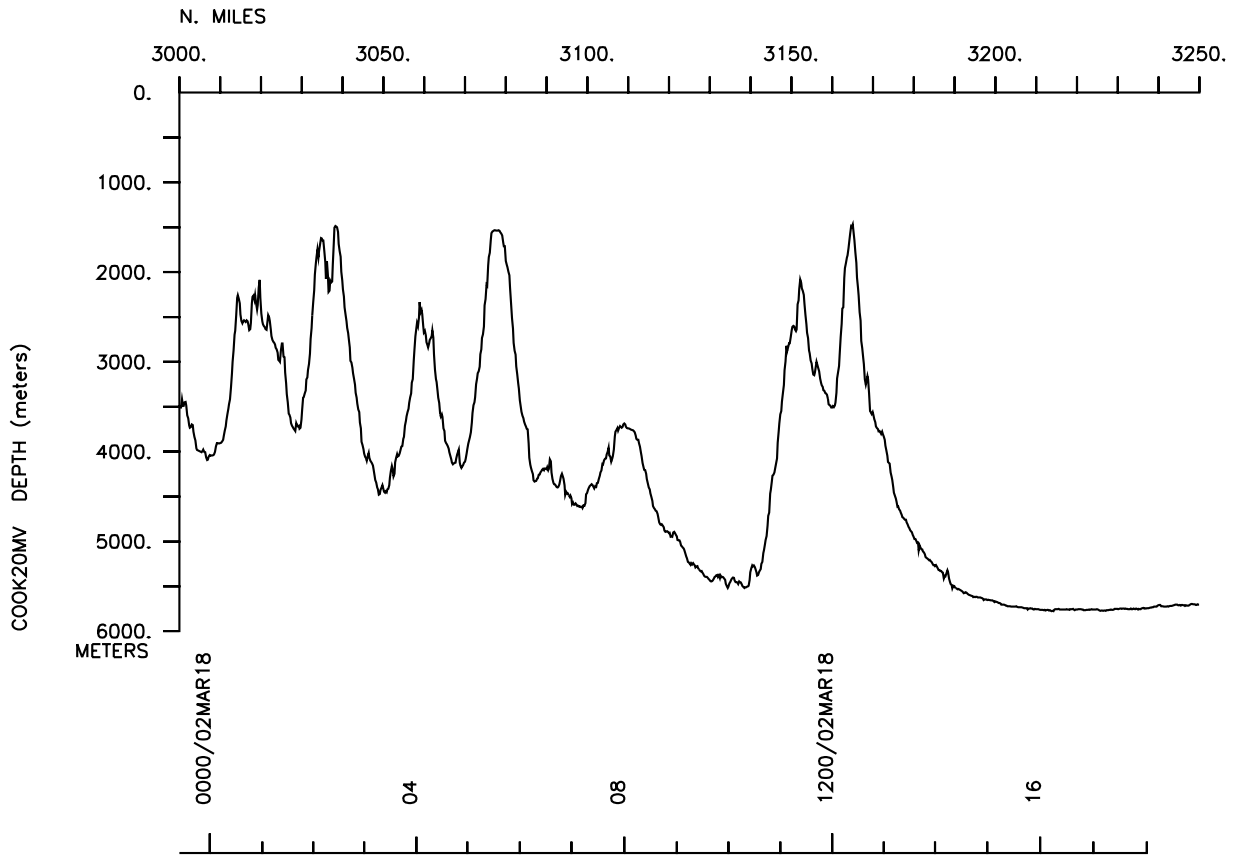
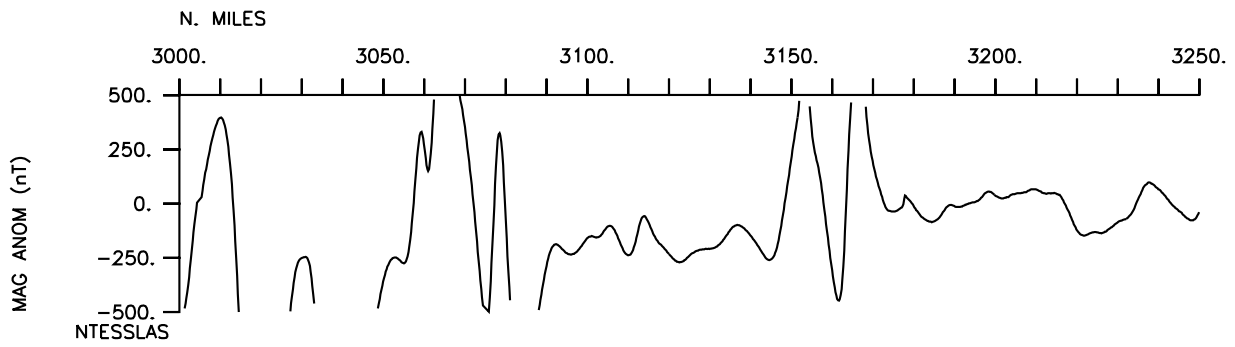
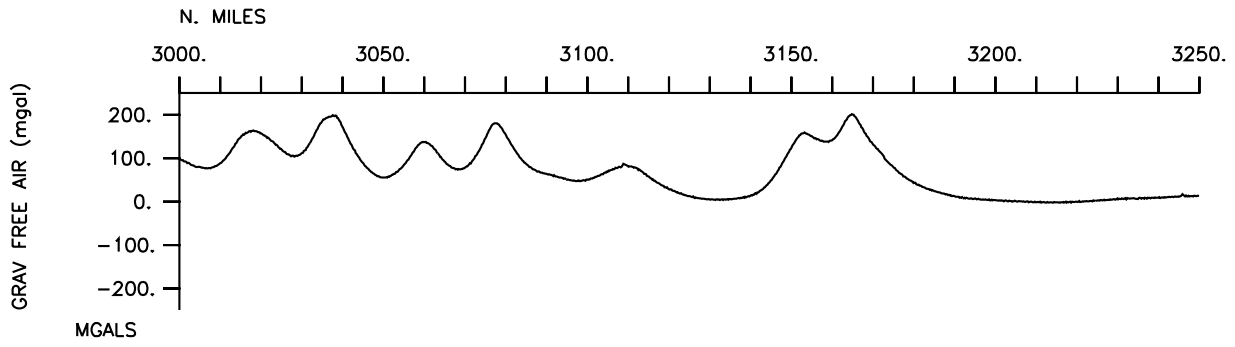


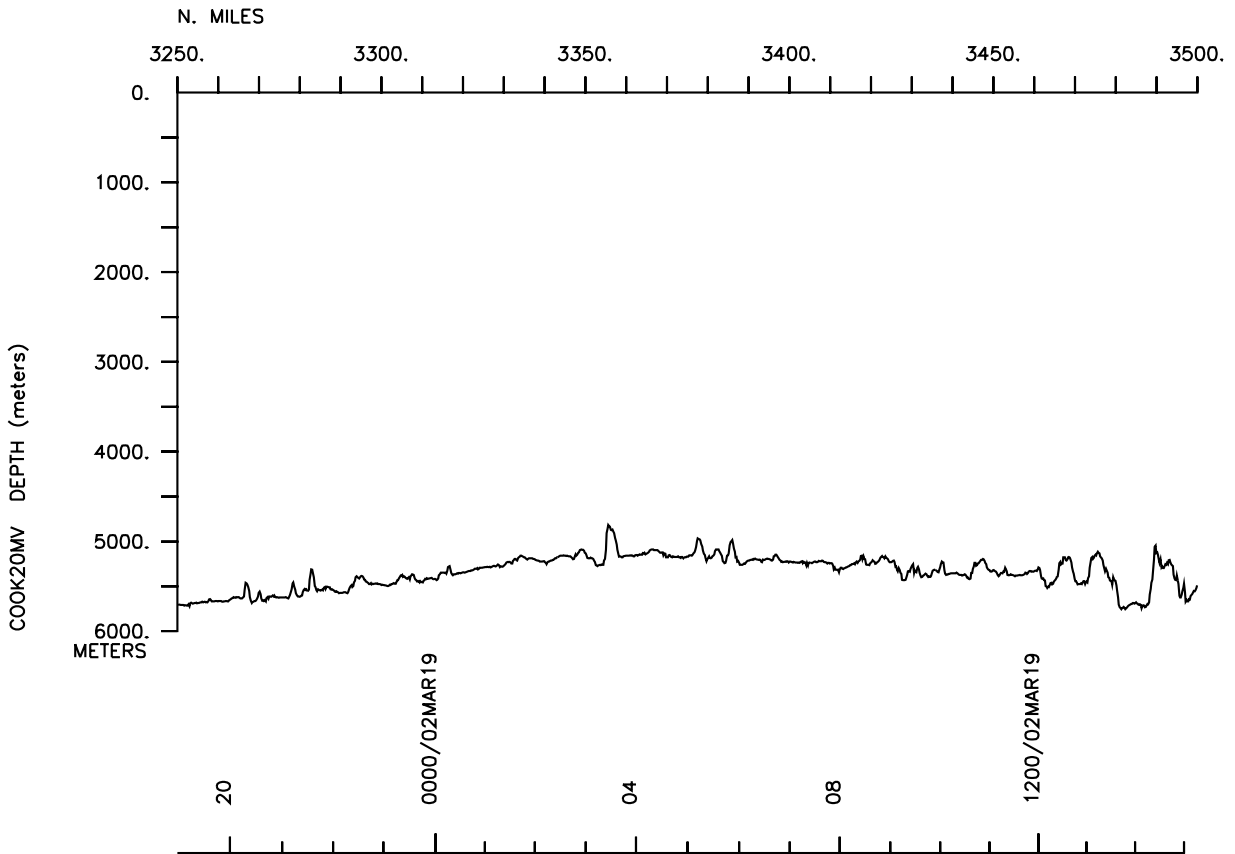
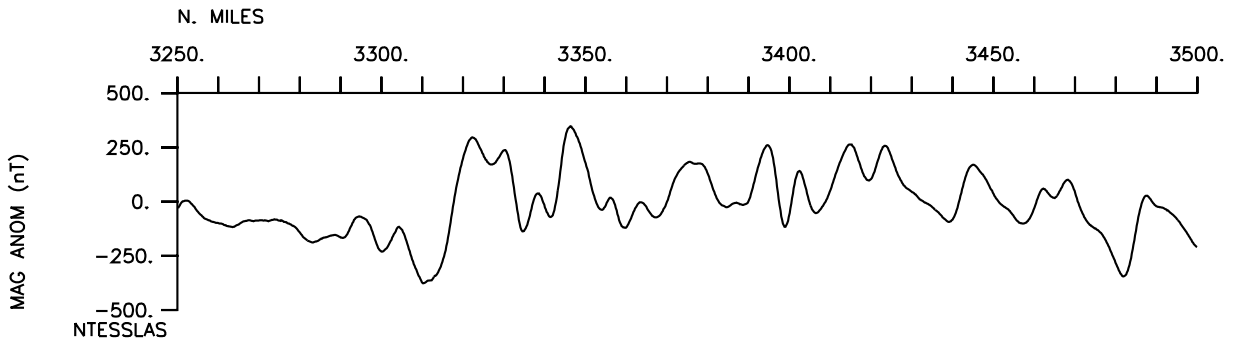
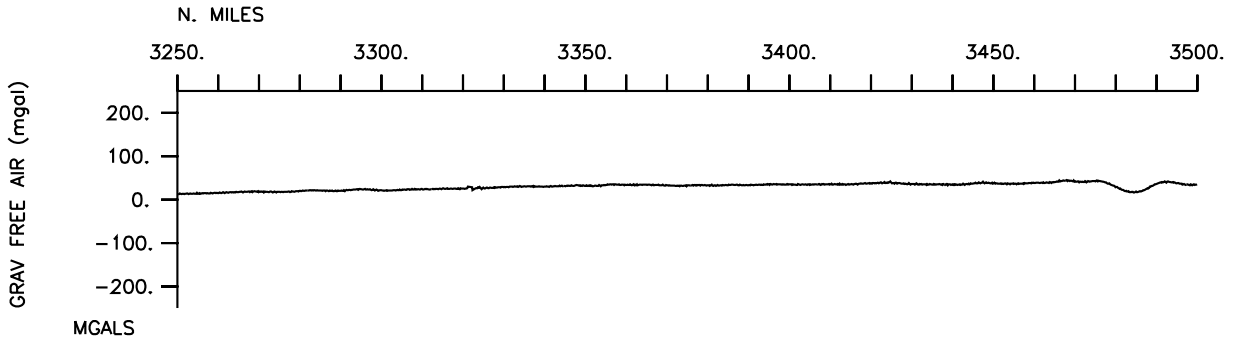


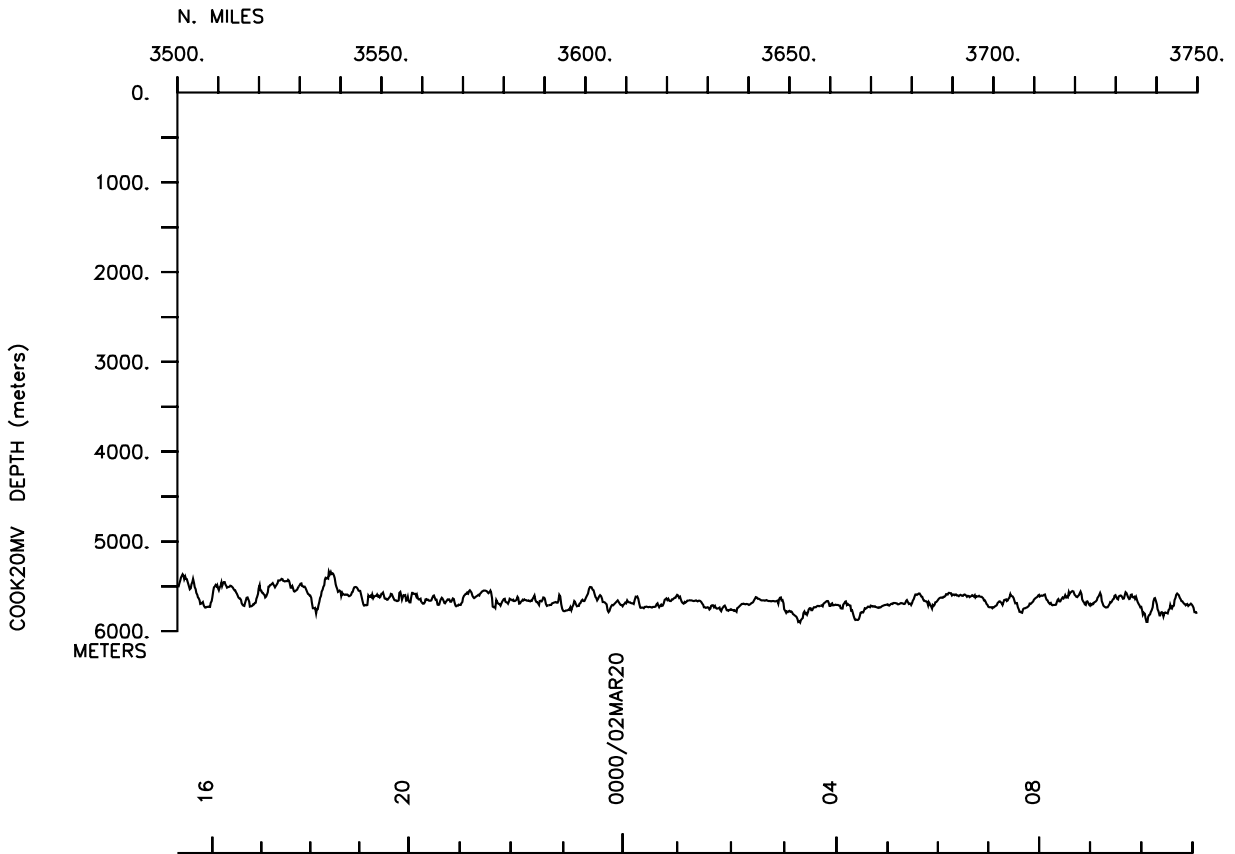
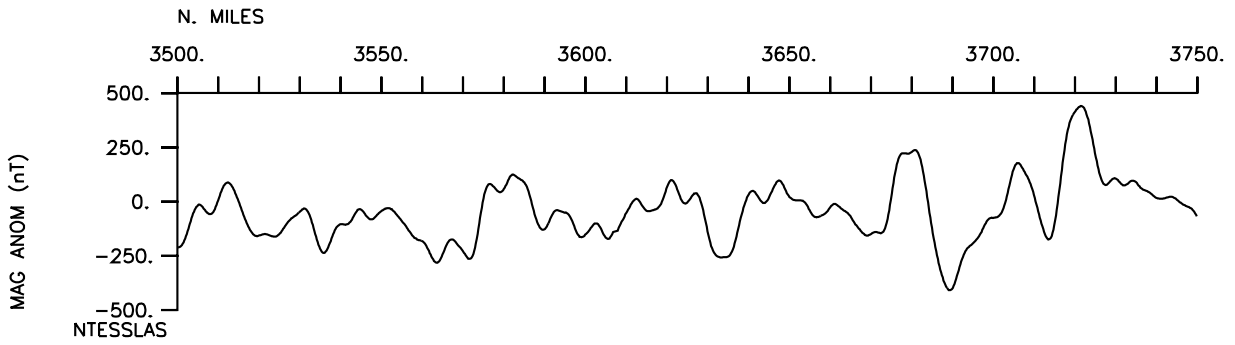
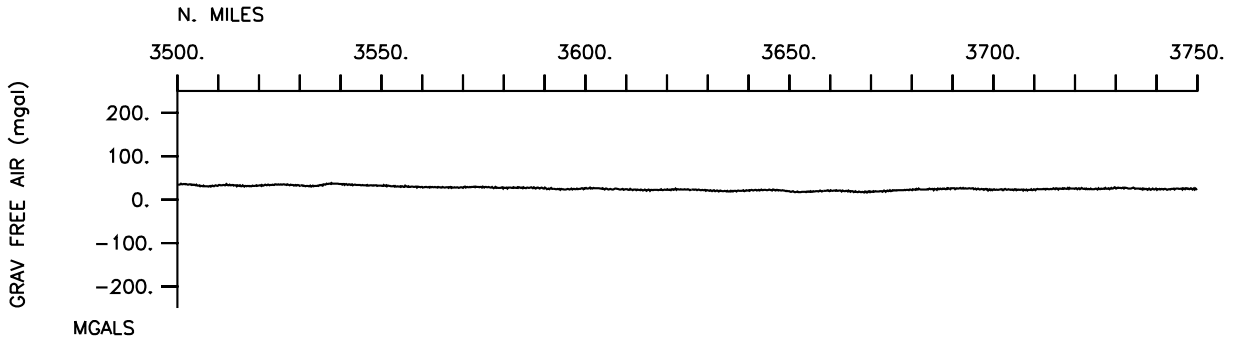


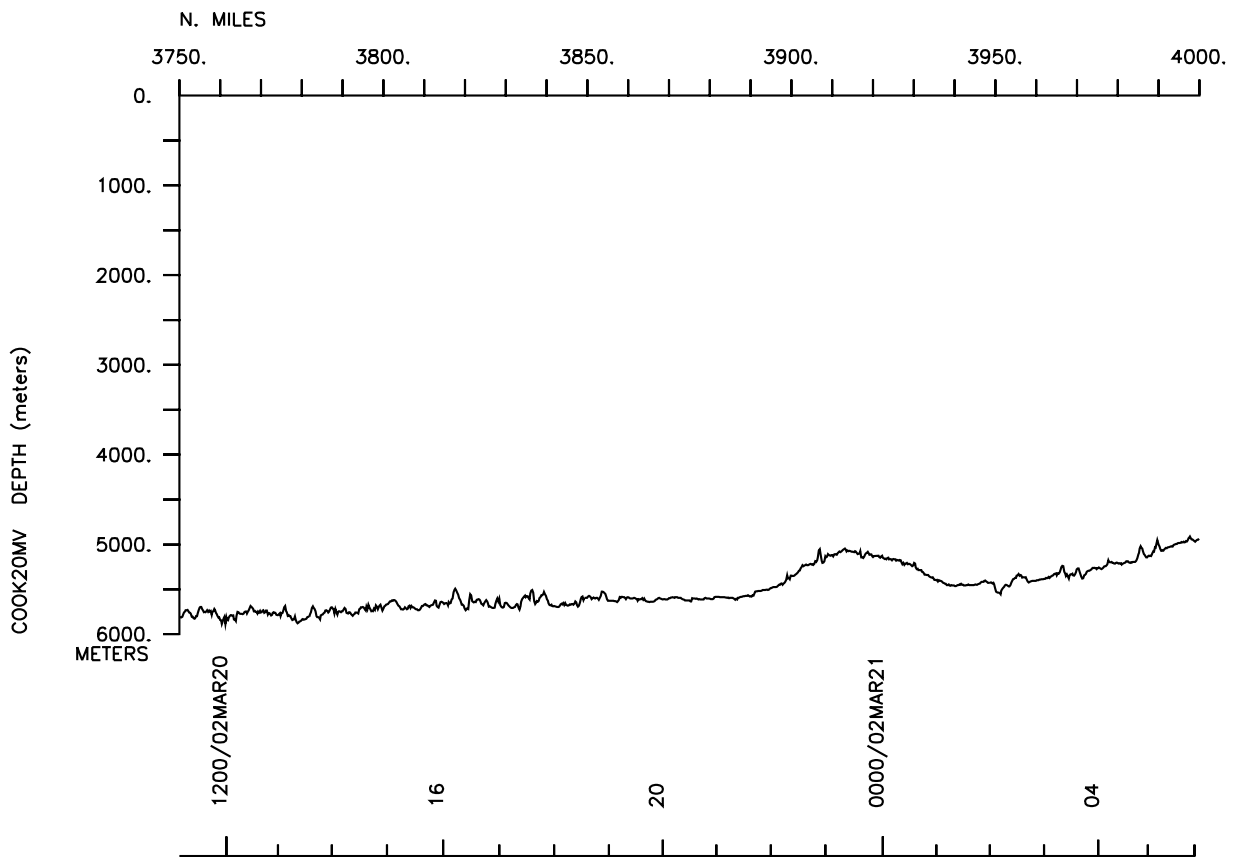
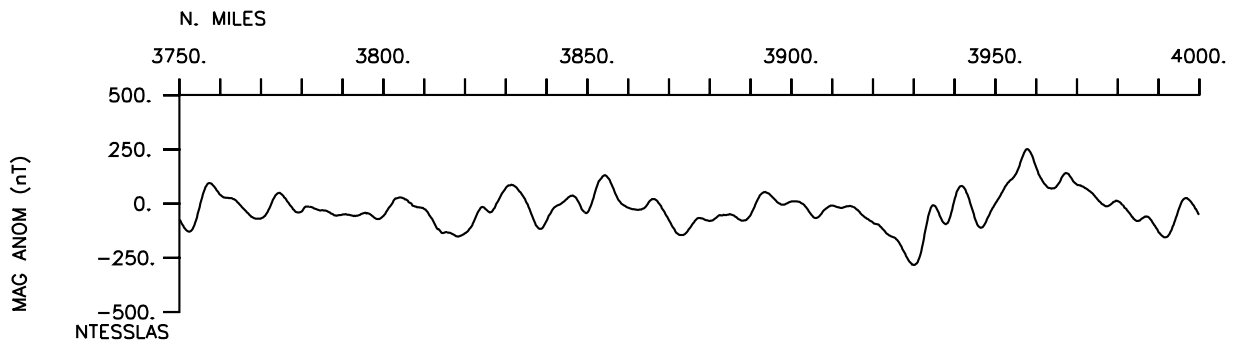
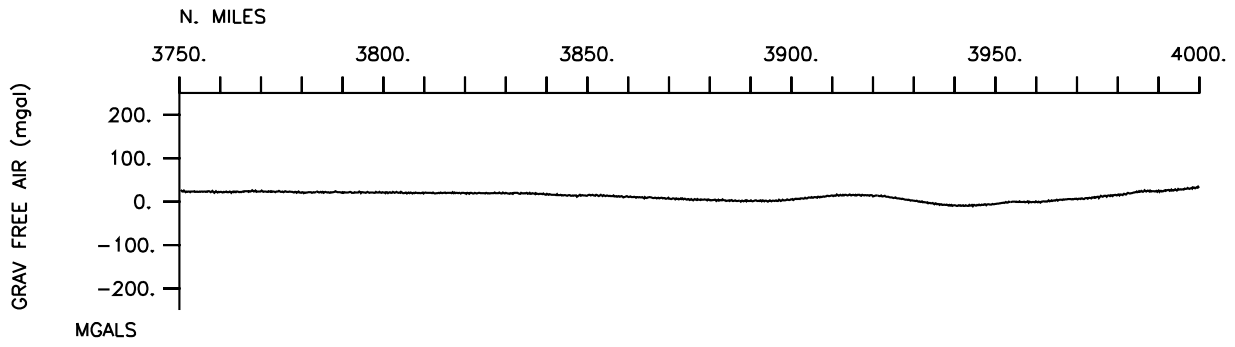


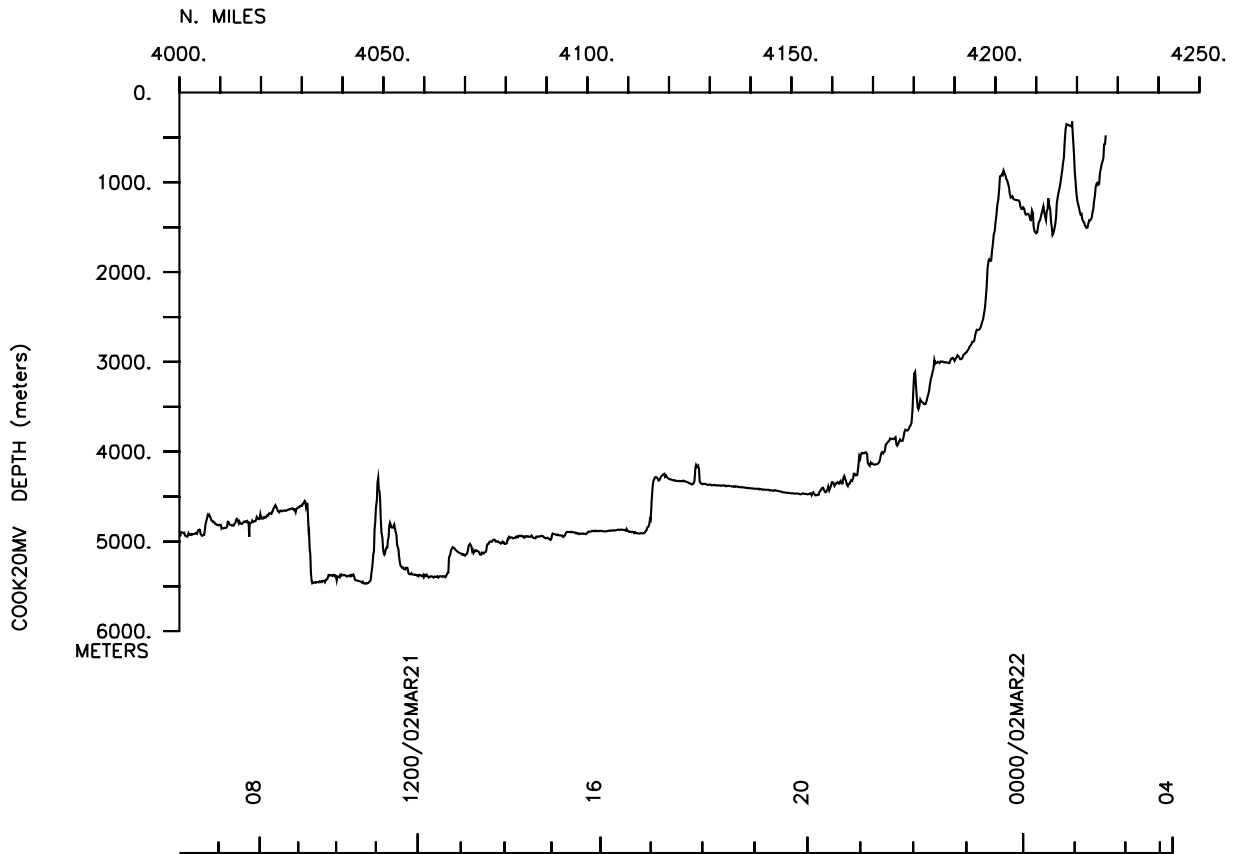
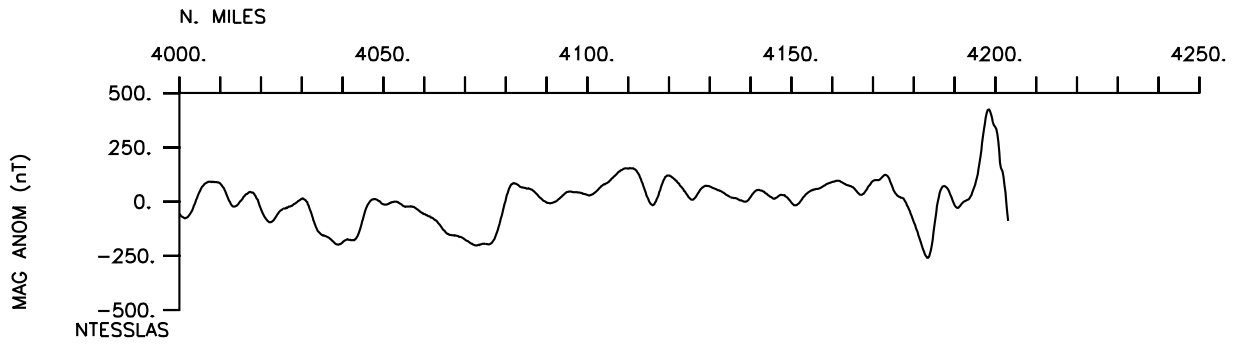
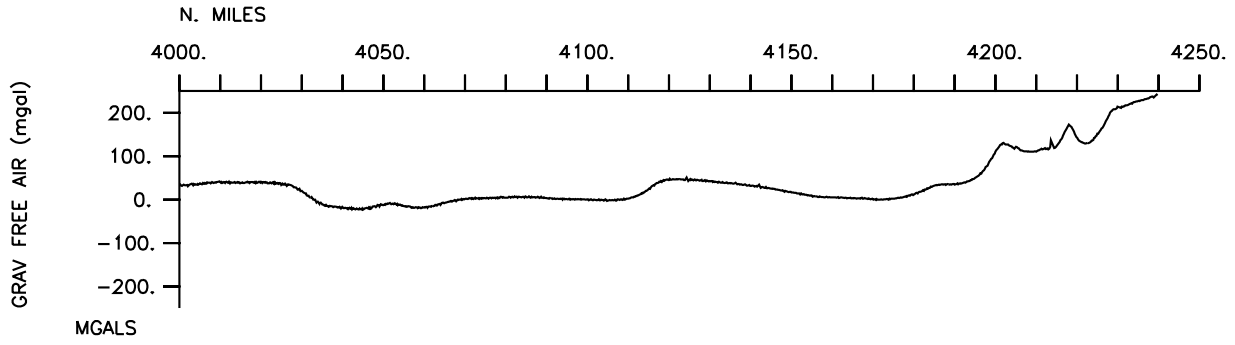












S.I.O. Sample Index

COOK Expedition

Leg 20

(COOK20MV)

R/V Melville

(Issued April 2002)

PORTS:

Lyttleton, New Zealand (7 March 2002)
to
Apia, Western Samoa (22 March 2002)

Chief Scientist : Stephen P. Miller
Scripps Institution of Oceanography

The Sample Index is a first level interdisciplinary listing of time, position, sample identification and disposition of all samples, records and measurements collected on this cruise leg. The index data are encoded at sea by the resident marine technician and processed on shore by the S.I.O. Shipboard Technical Support Group shortly after the completion of the cruise leg.

Positions are interpolated on the basis of sample time by comparison to a single, edited navigation file. Samples beginning at one time and position and ending at another are entered on two consecutive lines. Disposition and sample type are represented by three and four character codes to permit future computer searches on these parameters. (Listings defining these codes are available from the Shipboard Technical Support Group.)

GDC Cruise ID# 295

**** Ports ***

0310	070302	LGPT B	Lyttleton, New Zealand	43-36.00S	172-43.00E	f	COOK20MV
0407	220302	LGPT E	Apia, Western Samoa	13-49.00S	171-46.00W	f	COOK20MV

**** Personnel ***

#	*****NAME*****	*****TITLE*****	*****AFFILIATION*****	**CRID**
PECS	GDC Miller, S.P.	Chief Scientist	Scripps Institution	COOK20MV
PESP	UCSD Helly, J.	Scientist	U.of C. San Diego	COOK20MV
PESP	SIO Clark, D.	Staff Res. Asso.	Scripps Institution	COOK20MV
PESP	SIO Day, D.	Librarian	Scripps Institution	COOK20MV
PECT	SCG Chatwood, J.	Computer tech	Scripps Institution	COOK20MV
PESP	STS Peckman, U.	SB Processor	Scripps Institution	COOK20MV
PESP	SIX Africa, M.	Volunteer	Non Scripps Employee	COOK20MV
PESP	STS Peckman, U.	SB Processor	Scripps Institution	COOK20MV
PESP	SIX Herzer, R.	Scientist	New Zealand, GNS	COOK20MV
PESP	SIX Mitchell, J.	Scientist	New Zealand, NIWA	COOK20MV
PESP	SIX Davis, H.	Survey tech	New Zealand	COOK20MV
PESP	SIX Mundy, D.	Surveyor	New Zealand, LINZ	COOK20MV
PESP	SIX Stratford, W.	Grad student	New Zealand,Vict.U.	COOK20MV

**** NOTES ***

#An 'X' in the (B)egin/(E)nd column following the sample code indicates no #sample or data recovered. A 'C' indicates continuation of data collection #from before the beginning or after the end of a particular leg, (moored #bottom instruments, for example.) The number appearing in the columns #between the sample identifier and the disposition code, for many sample #entries, is the water depth in corrected meters.

#GMT	DDMMYY	SAMP	B	SAMPLE	DISP		p	CRUISE		
#TIME	DATE	TZ	CODE	E	IDENTIFIER	CODE	LATITUDE	LONGITUDE	c	LEG-SHIP

**** Underway Data Curator - Shipboard Technical Support Group, ext.41899 ***
 **** Digital Data Curator - Geological Data Center, S.P. Miller, ext.41898 ***

**** Log Book ***

0316	070302	0	LBUW B	Underway log book	GDC	43-36.41S	172-43.22E	g	COOK20MV
0238	210302	0	LBUW E	Underway log book	GDC	18-12.39S	171-44.88W	g	COOK20MV

**** MultiBeam Data (vertical beam and side scan) ***

1010	070302	0	MBSR B	v.beam&sidescan	GDC	44-08.93S	174-13.24E	g	COOK20MV
0137	220302	0	MBSR E	v.beam&sidescan	GDC	13-50.68S	171-31.39W	g	COOK20MV

**** Digital Magnetics (Earth Total Field) ***

0844	070302	0	MGDD B	Magnetic data	GDC	43-58.84S	173-54.40E	g	COOK20MV
2347	210302	0	MGDD E	Magnetic data	GDC	14-07.87S	171-20.00W	g	COOK20MV

**** Echo Sounder Data ***

1345 080302 0 DPR3 B Knudsen 3.5kHz data GDC 48-32.62S 179-05.99E g COOK20MV
0238 210302 0 DPR3 E Knudsen 3.5kHz data GDC 18-12.39S 171-44.88W g COOK20MV

*** Integrated Meteorological Acquisition System ***

0310 070302 0 IMET B Weather Measurements GDC 43-36.41S 172-43.22E g COOK20MV
0407 220302 0 IMET E Weather measurements GDC 13-49.51S 171-45.83W g COOK20MV

*** Acoustic Doppler Current Profiler ***

0310 070302 0 ADCP B 300kHz current meas. GDC 43-36.41S 172-43.22E g COOK20MV
0407 220302 0 ADCP E 300kHz current meas. GDC 13-49.51S 171-45.83W g COOK20MV

*** End Sample Index COOK20MV