

INFORMAL REPORT AND INDEX OF  
NAVIGATION, DEPTH, MAGNETIC AND SUBBOTTOM PROFILER DATA  
(Issued May 1989)

ROUNABOUT EXPEDITION

LEG 15  
=====

R/V Washington

Nuku'Alofa, Tonga (1 February 1989)  
to  
Pago Pago, Samoa (3 March 1989)

Chief Scientist:

James Hawkins - Scripps Institution of Oceanography

Resident Marine Technician - Geoff Hargreaves

Post-Cruise Processing and Report Preparation  
by Geological Data Center, Scripps Institution of Oceanography

Data Collection and Processing Funded by NSF  
Grant Number OCE87-02835

NOTE: This is an index of underway geophysical data edited and processed after the completion of the cruise leg and is intended primarily for informal use within the institution. This document is not to be reproduced or distributed outside Scripps without prior approval of the chief scientist or the Geological Data Center, Scripps Institution of Oceanography, La Jolla, California 92093.

GDC Cruise I.D.# 239

INFORMAL REPORT AND INDEX OF NAVIGATION  
AND UNDERWAY GEOPHYSICAL DATA

Processed by the Geological Data Center  
Scripps Institution of Oceanography

Contents:  
-----

- Index Chart - gives track of cruise leg, dates, ports, and mileage of each type of data collected.
- Track Charts - annotated with dates and hour ticks.
- Profiles - depth, magnetic anomaly and gravity free air anomaly vs. distance. Sections of track having subbottom profiles (airgun or watergun) records have a wide black line along the bottom of the profile. Sections having Sea Beam are indicated by a narrow black line.
- Sample Index - list of beginning and end times and positions of all underway records as well as all other samples and measurements (geology, biology, physical oceanography, etc.) collected on the cruise leg.

NOTE: One or more of the underway data types may not be collected on a given cruise leg.

For information on the availability and reproduction costs of data in the following forms, contact S. M. Smith, Curator, Geological Data Center, Scripps Institution of Oceanography, La Jolla, CA 92093. Phone (619)534-2752.

1. Navigation listing with times and positions of course and speed changes, fixes and drift velocity.
2. Depth compilation plots - compilation plots at the traditional scale of 4in/degree longitude (1:1,000,000) are no longer produced for Sea Beam cruises. Custom plots may be requested of vertical beam (2 $\frac{2}{3}$  degree beam width) depths retrieved at one minute intervals of ship time.
3. Plots of depths, magnetics or gravity profiles along track - custom plots at various map and profile scales on Mercator projection may be requested.
4. Separate time series files of navigation, depth, gravity and magnetics as well as these data merged in the MGD77 Exchange format on magnetic tape.
5. Microfilm or Xerox copies of:
  - a. Echosounder records - 12 and 3.5 kHz frequency
  - b. Subbottom profiler records
  - c. Magnetometer records
  - d. Underway data log book

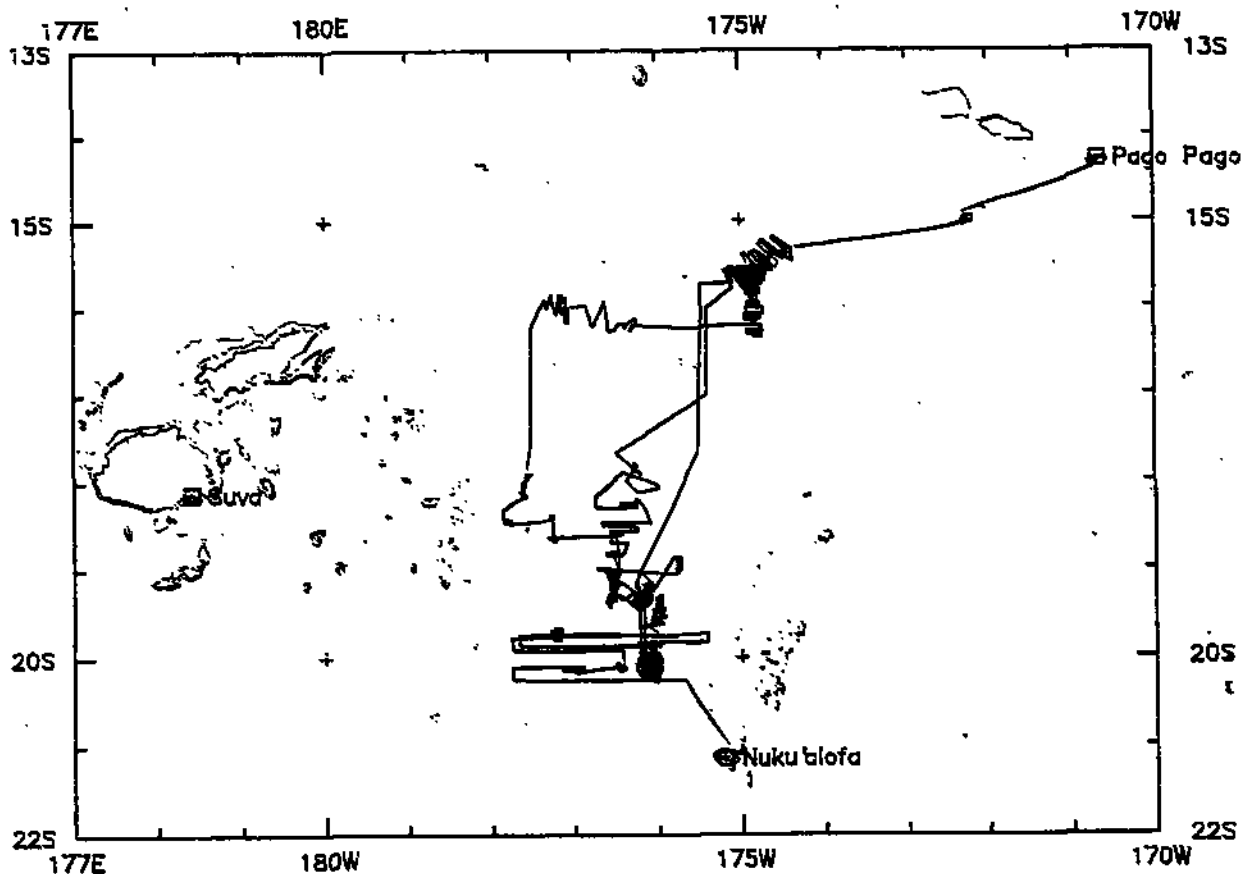
Revised September 1987

## SIO Sea Beam Data

The following forms are available, subject to approval of the cruise leg chief scientist:

- 1) Archive copy of contour swath books generated in real time on board ship available for inspection at the data center.
- 2) Microfilm (35mm flowfilm) containing swath books plus, for some cruises, the Sea Beam monitor record and navigation list.
- 3) Sea Beam merged tapes - Sea Beam data merged with navigation. (Navigation is edited to the extent that DR courses and speeds are edited and poor fixes are removed after inspection of drift vectors between fix pairs. No editing is done on the basis of adjusting to overlapping Sea Beam swaths.)
- 4) Archive contour plots - 16"/degree chart scale, with contour interval nominally 50m, are generated for all transit lines. Some survey areas are plotted at appropriate scales as well. Available for inspection at data center; additional copies may be generated from plot files stored on tape.
- 5) Custom generated plots of Sea Beam swaths on Mercator projection in four colors at variable plot scales and contour intervals. There are provisions to adjust positions of individual track lines and to edit out beams (bad data or overlapping data on inside of turns).

revised October 1986



### ROUNABOUT EXPEDITION LEG 15

#### CHIEF SCIENTIST:

James Hawkins (Scripps Institution of Oceanography)

PORTS: Nuku'Alofa, Tonga - Pago Pago, Samoa

DATES: 1 February - 3 March 1989

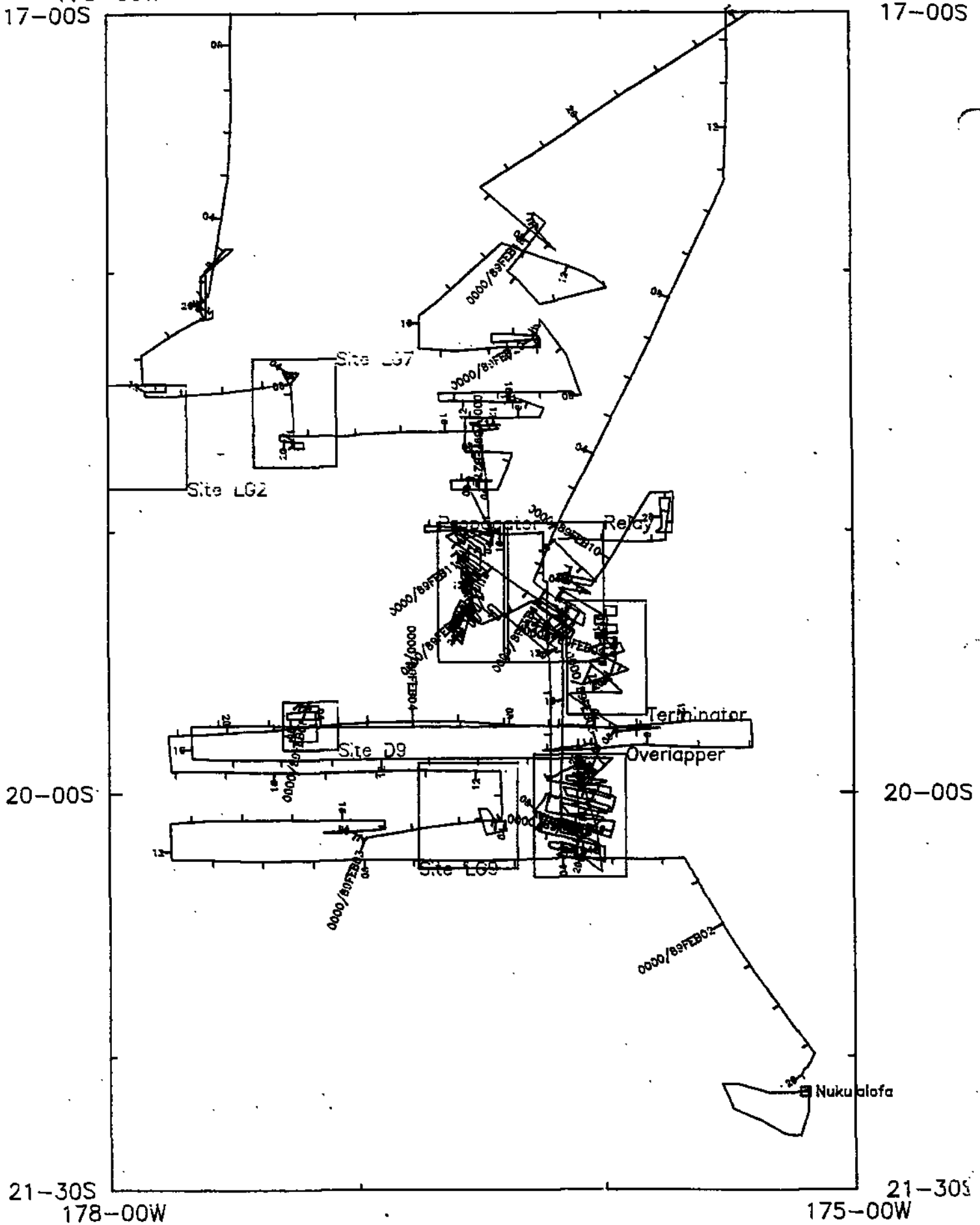
SHIP: R/V T. Washington

#### TOTAL MILEAGE OF UNDERWAY DATA COLLECTED

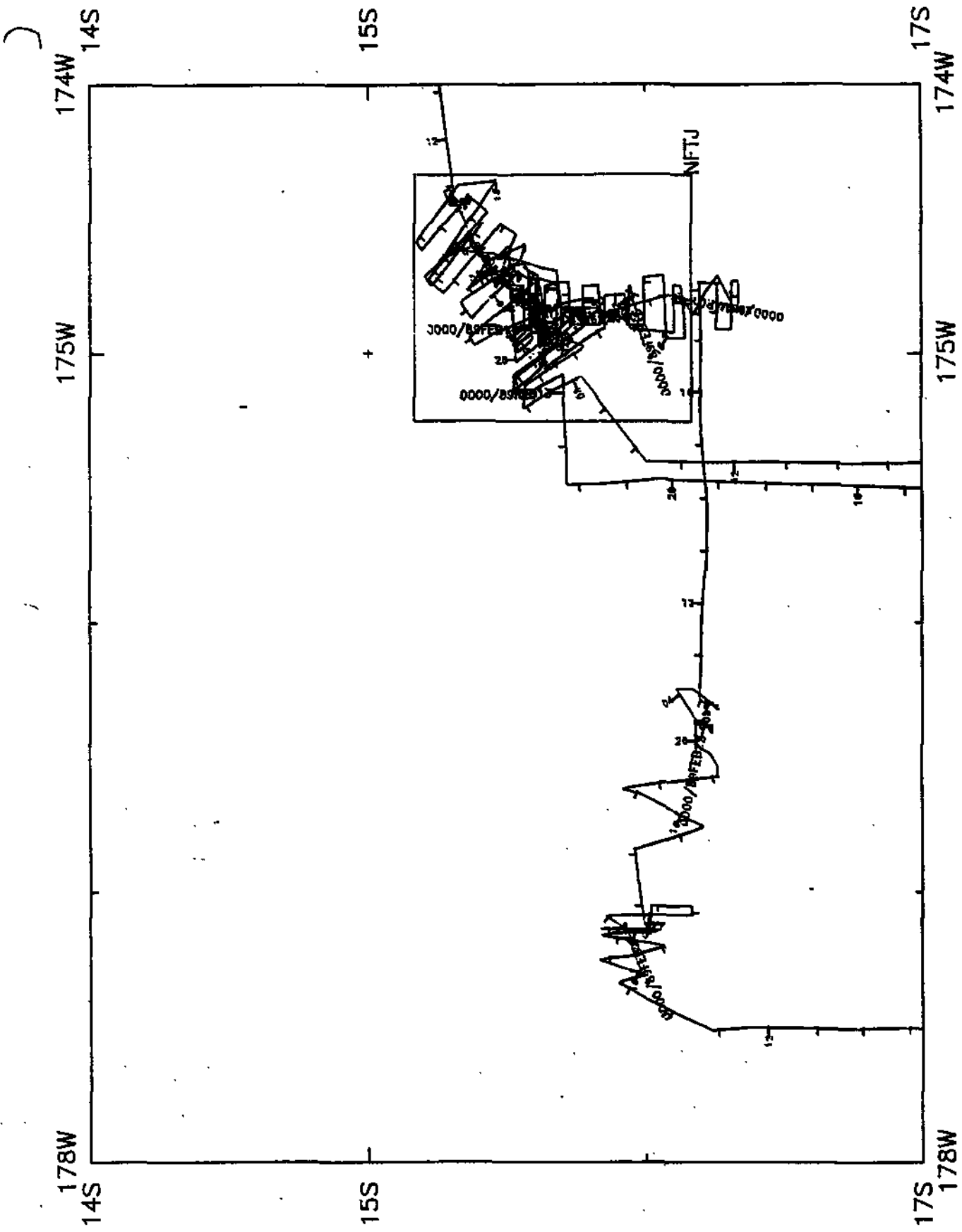
- 1) Cruise - 5094 miles
- 2) Bathymetry - 4989 miles
- 3) Magnetics - 4554 miles
- 4) Seismic Reflection - none collected
- 5) Gravity - collected but not processed
- 6) Sea Beam - 4989 miles

178-00W  
17-00S

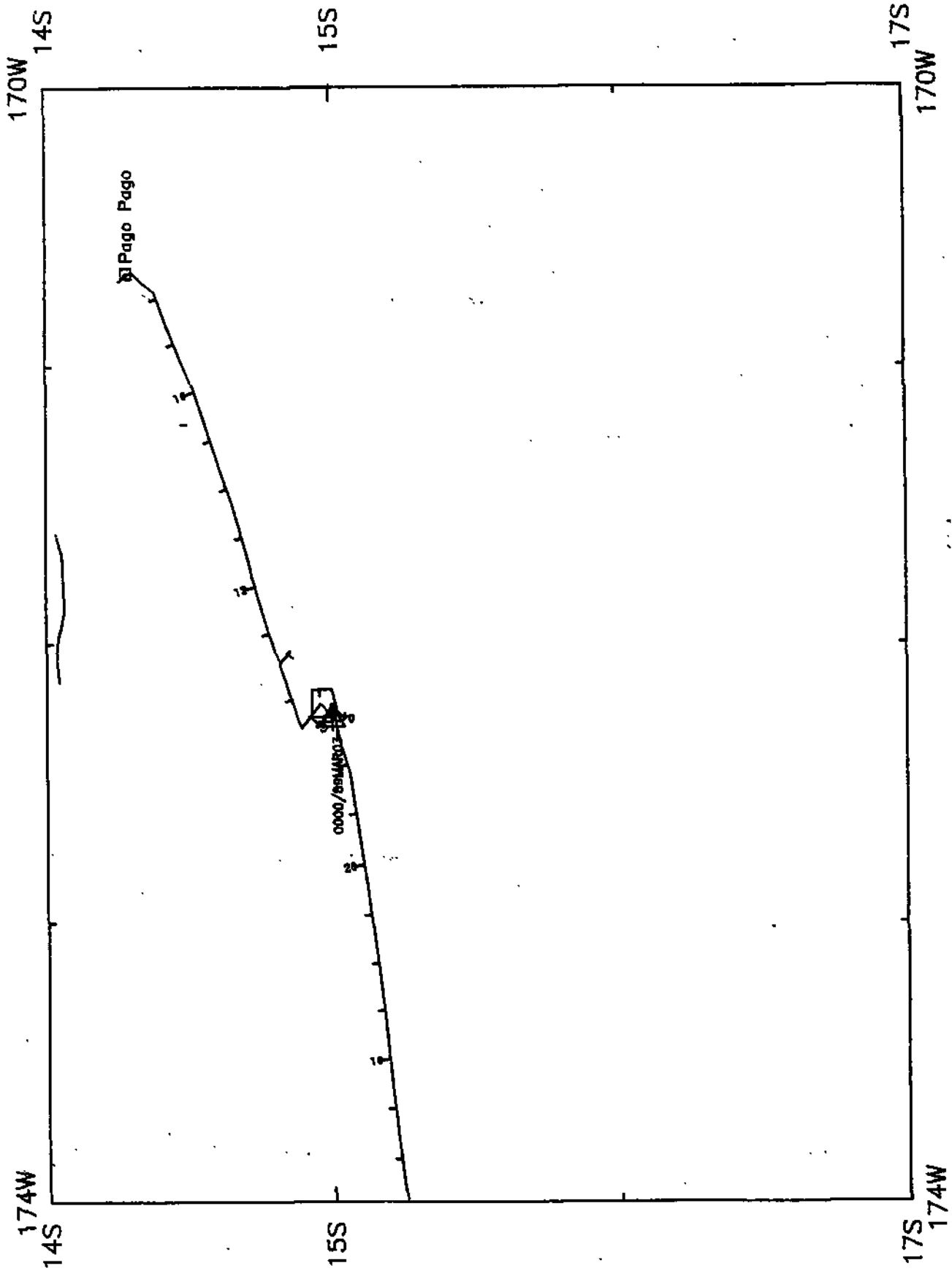
175-00W  
17-00S



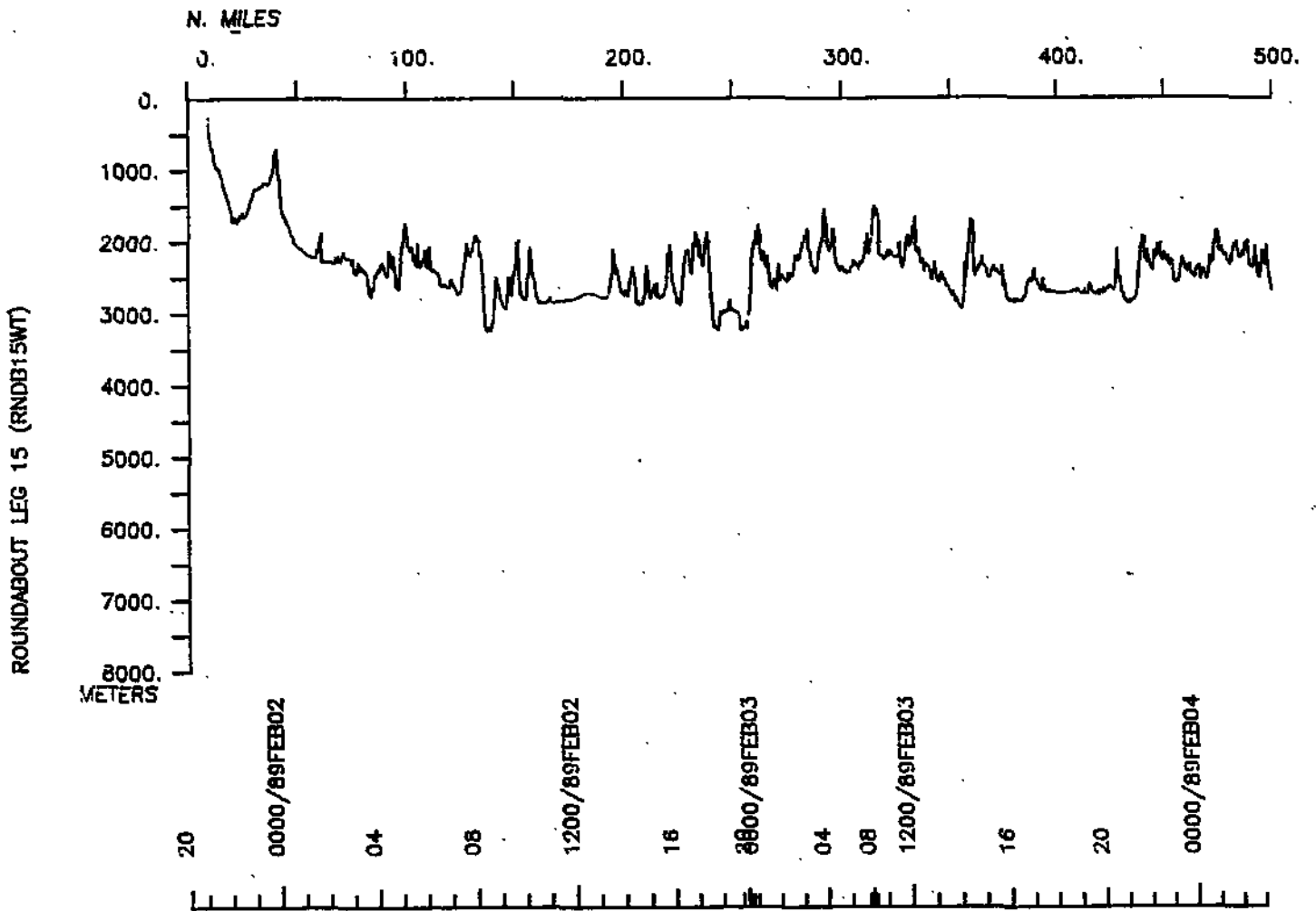
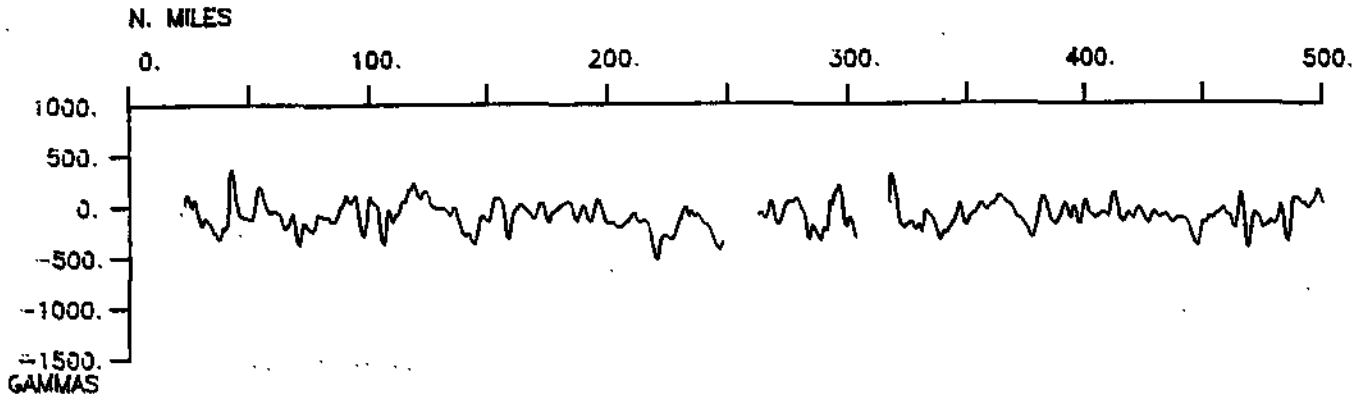
ROUNDBABOUT, LEG 15 (RNDB15WT) Track 1 of 3  
(Survey Boundaries shown for Legs 14 and 15)



ROUNDAABOUT, LEG 15 (RNDB15WT) Track 2 of 3

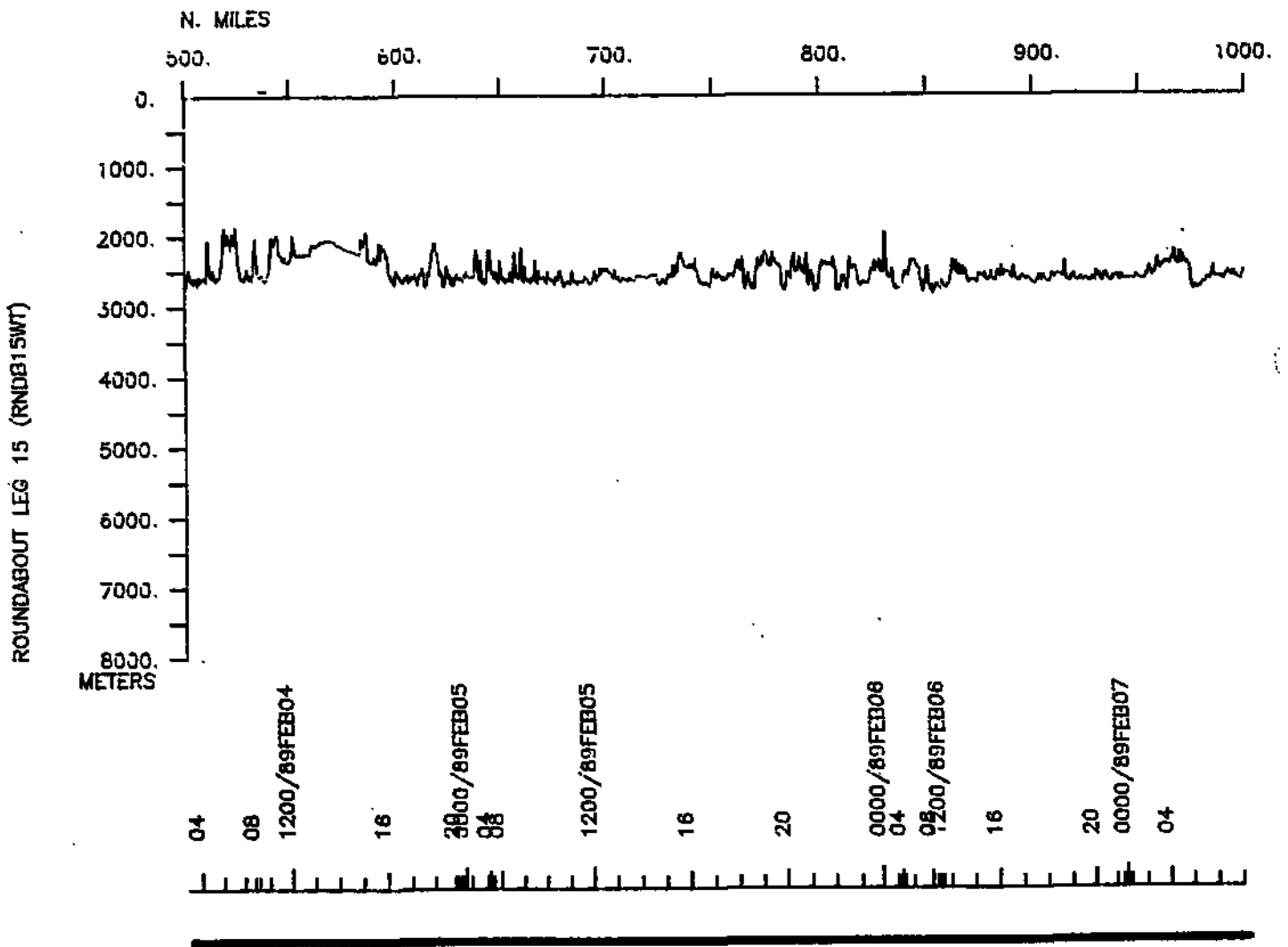
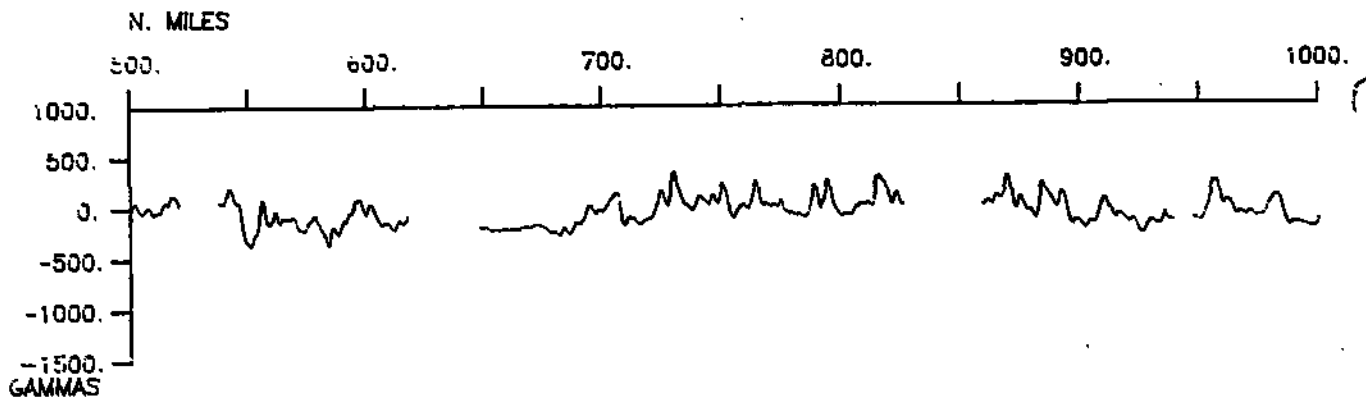


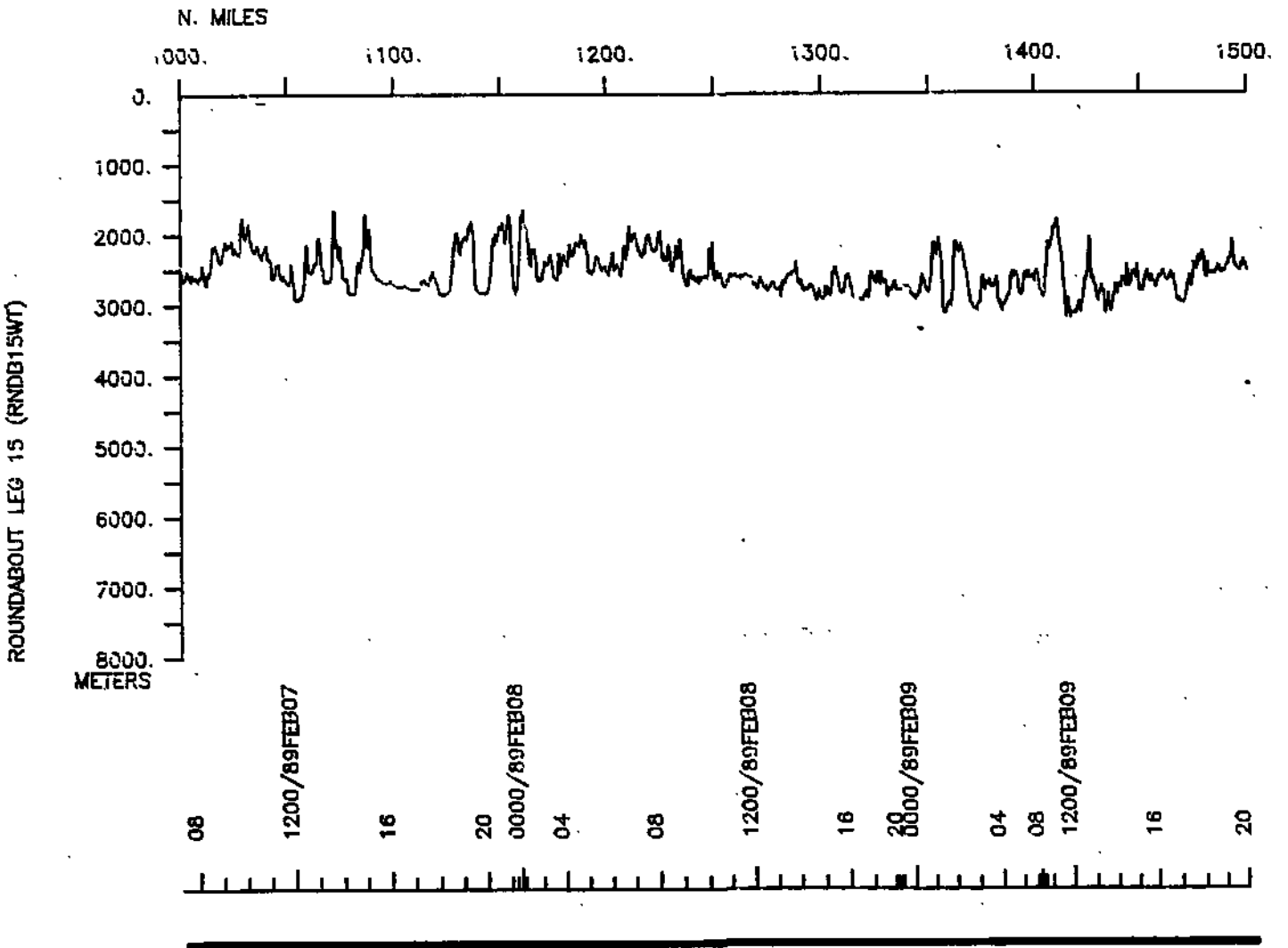
ROUNDABOUT, LEG 15 (RNDB15WT) Track 3 of 3

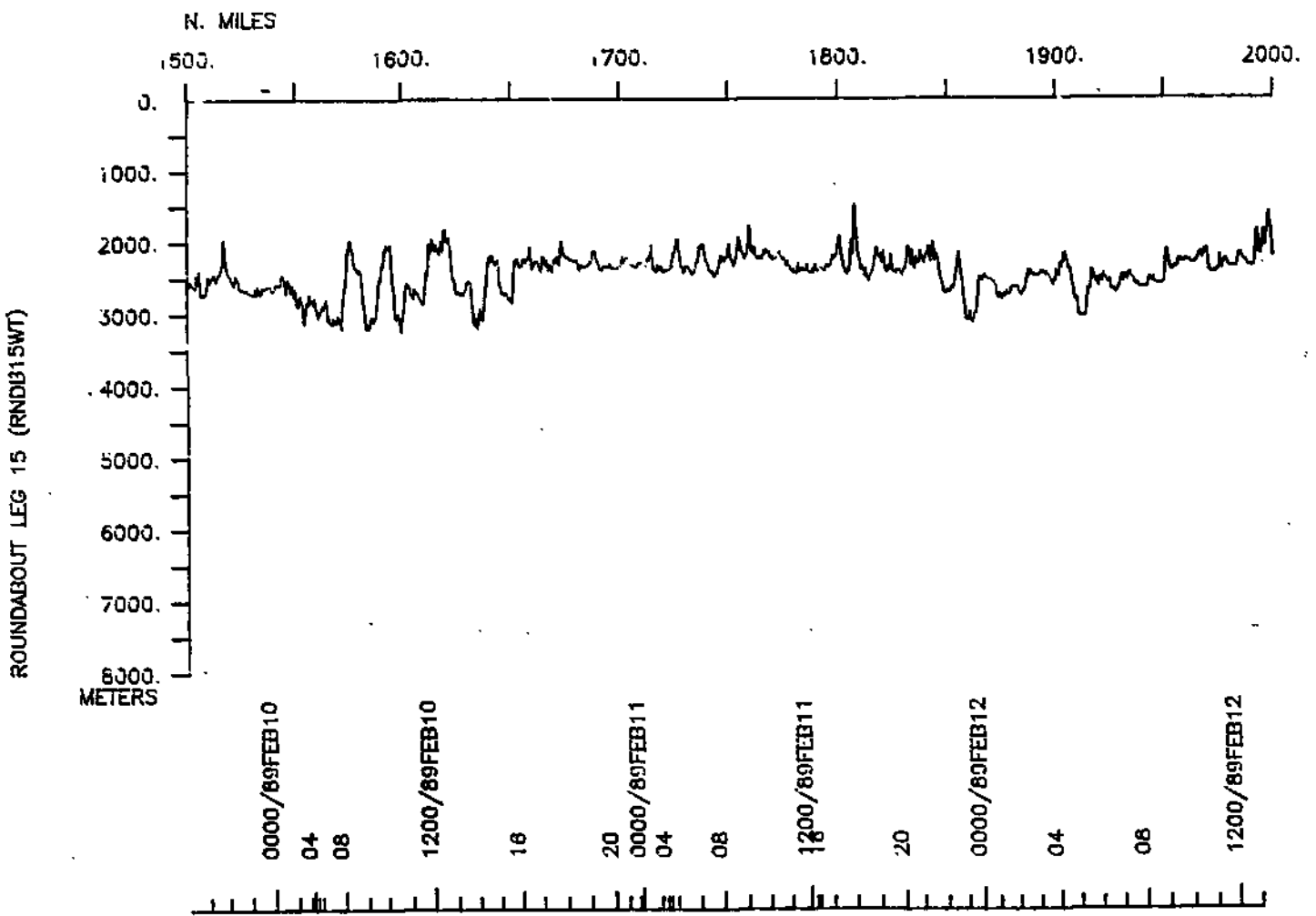
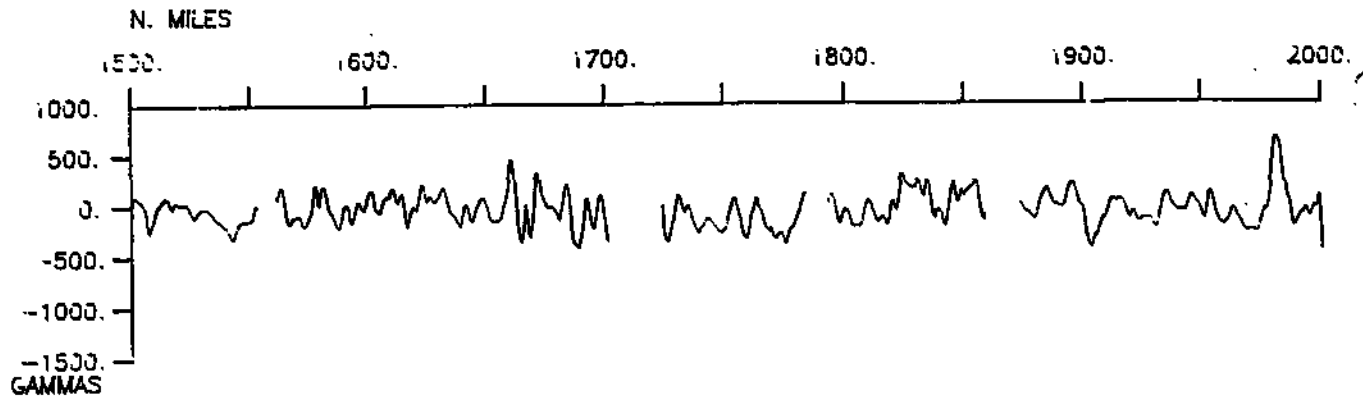


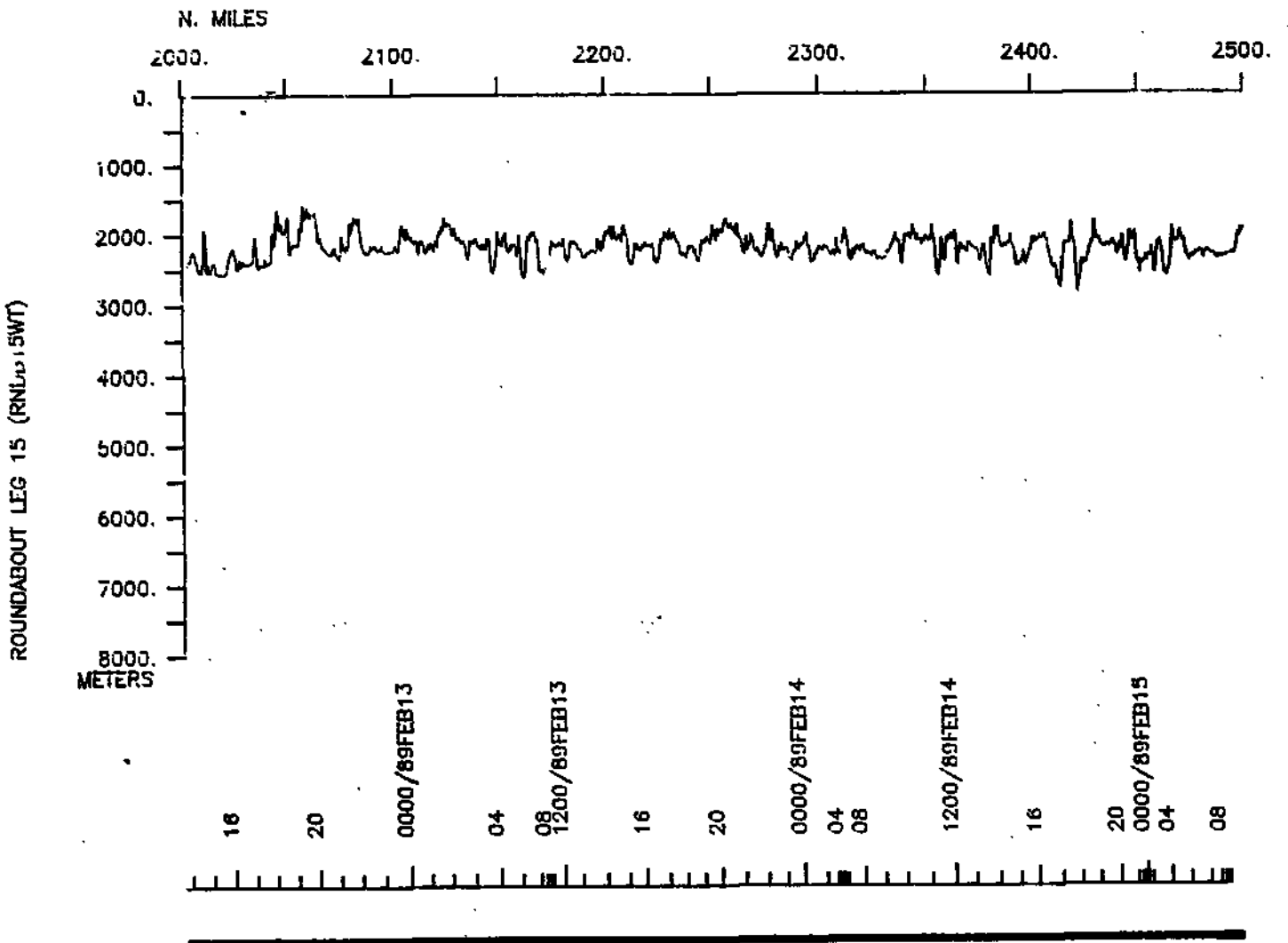
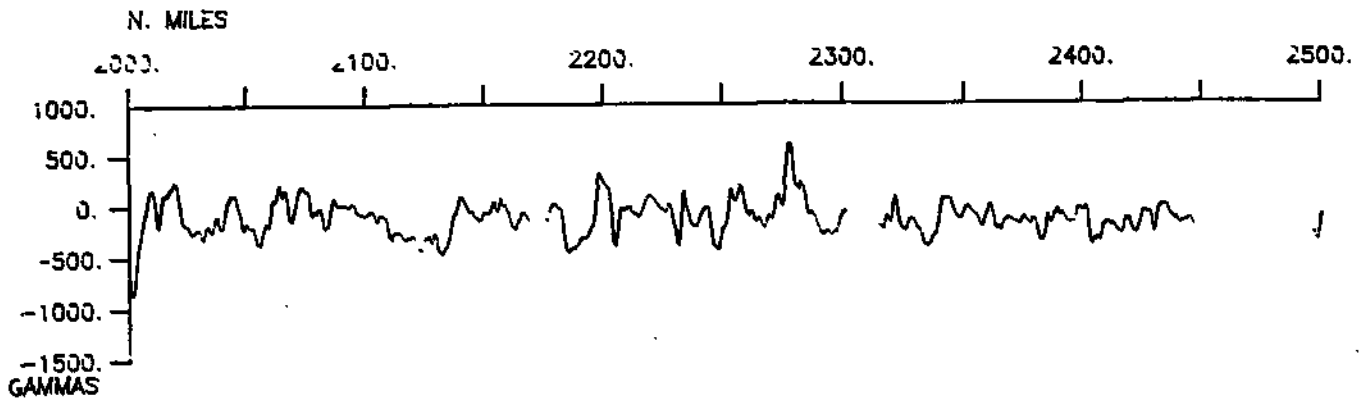
**SEABEAM**

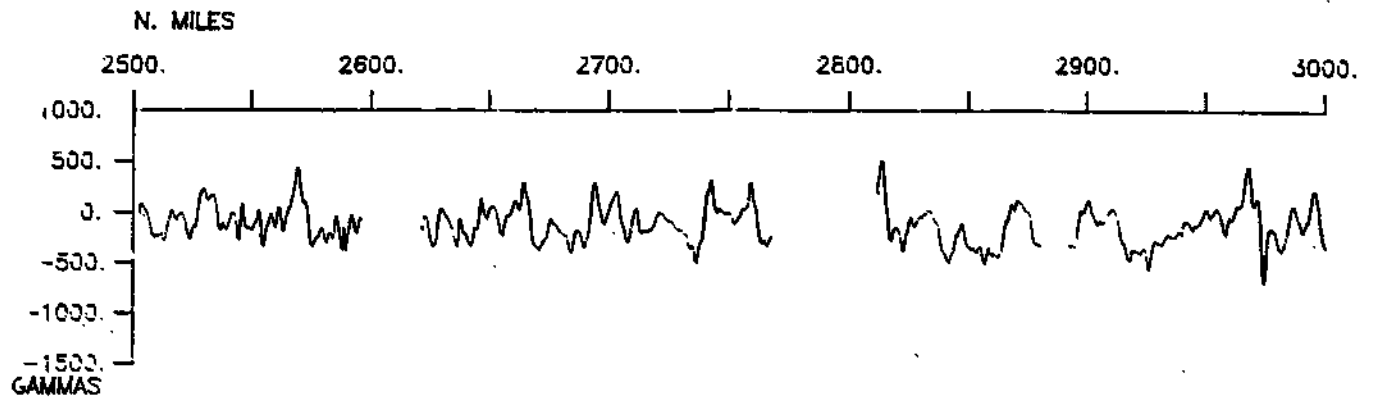




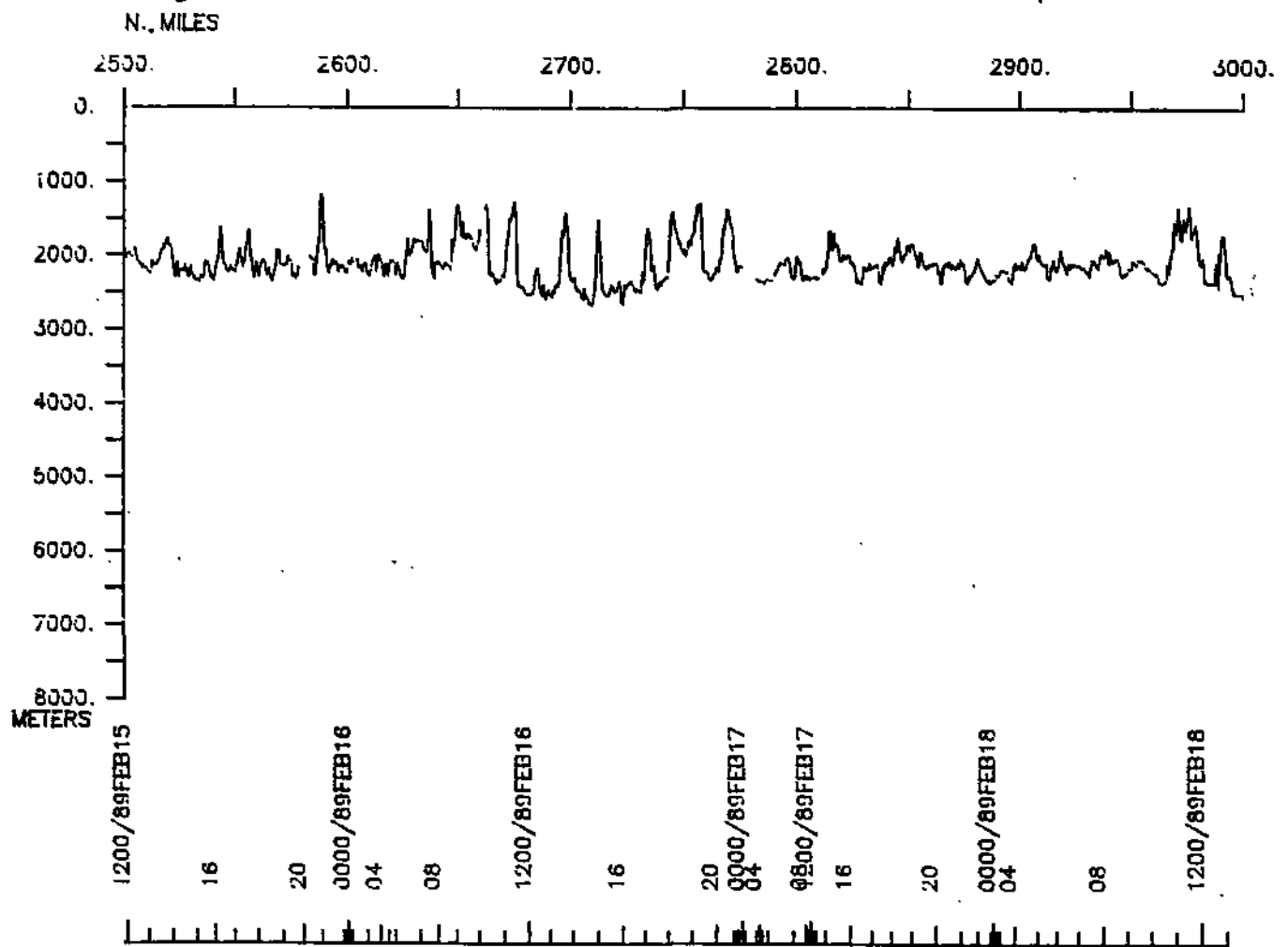


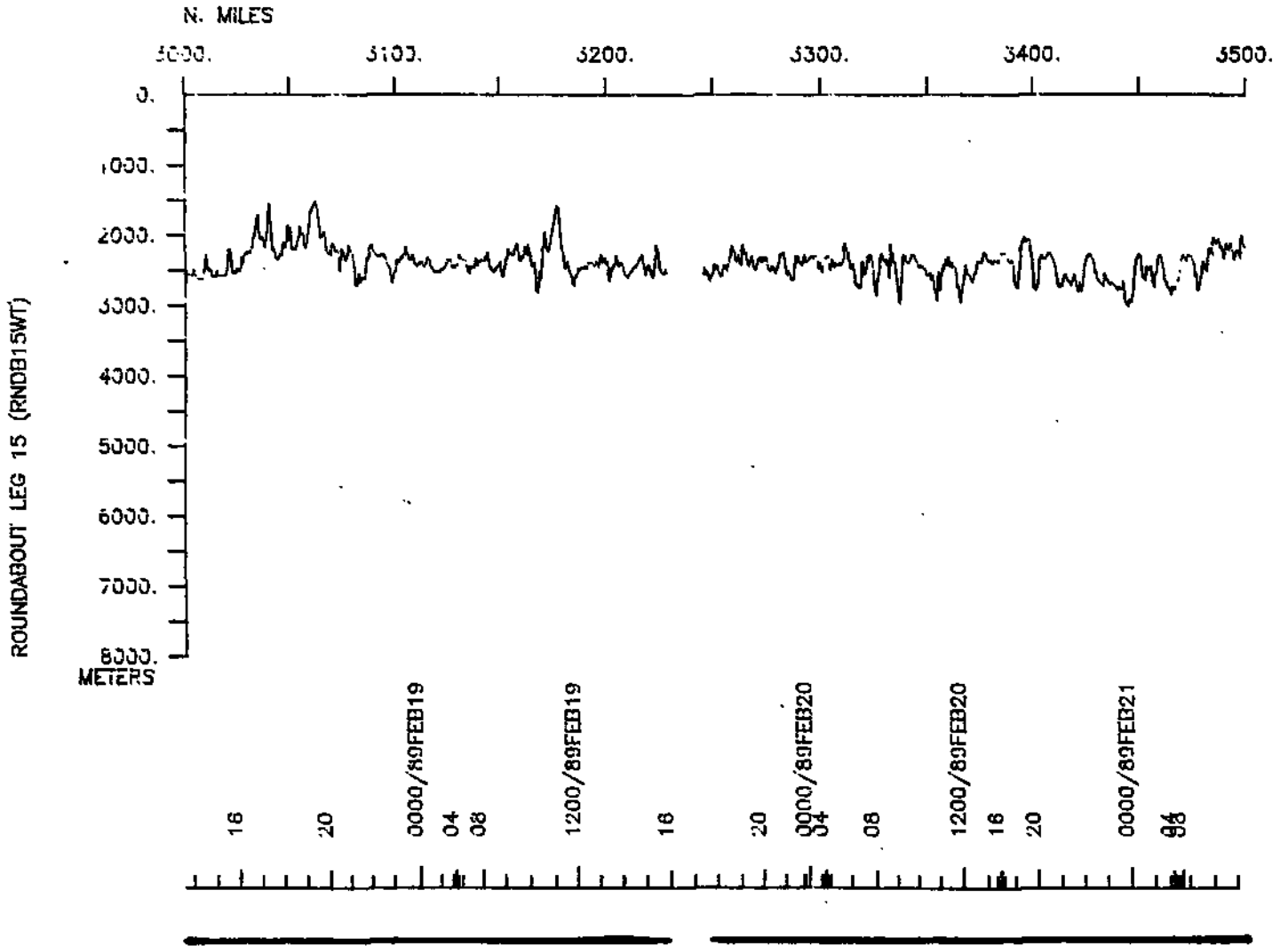
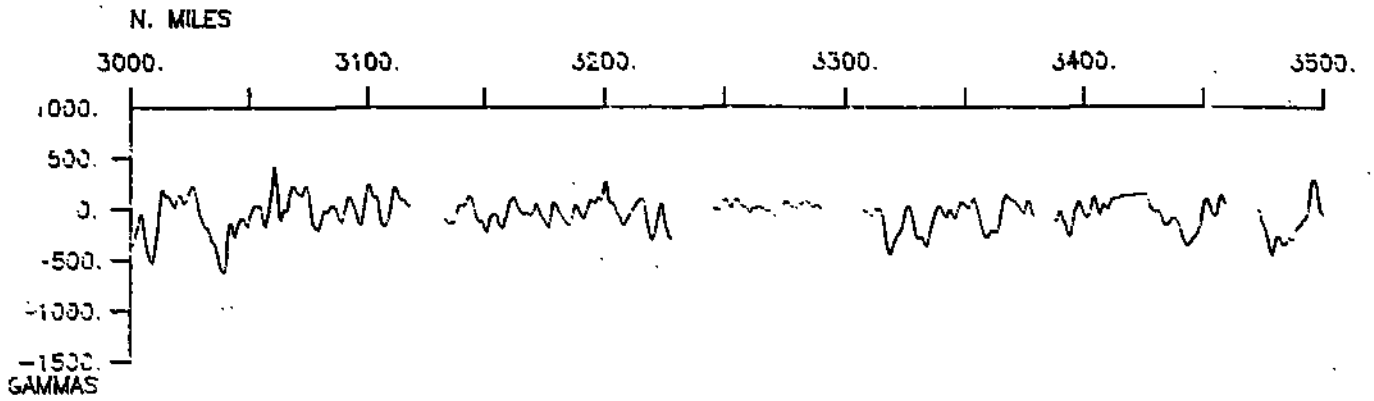


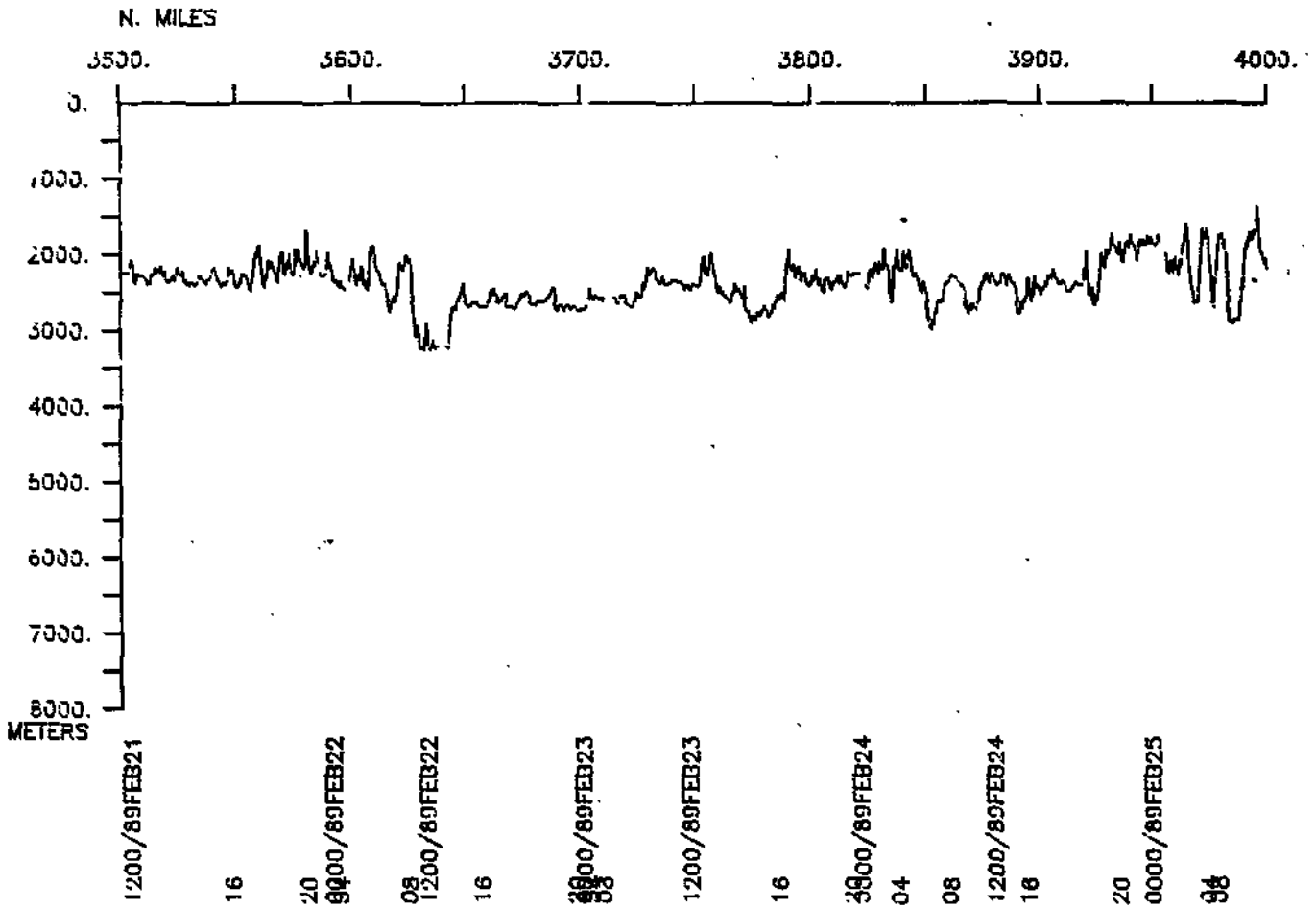
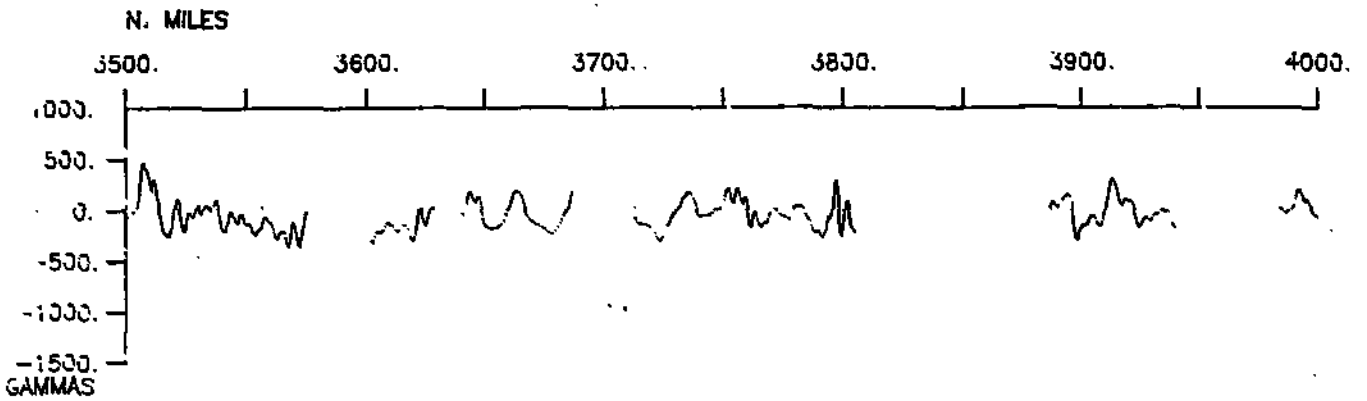




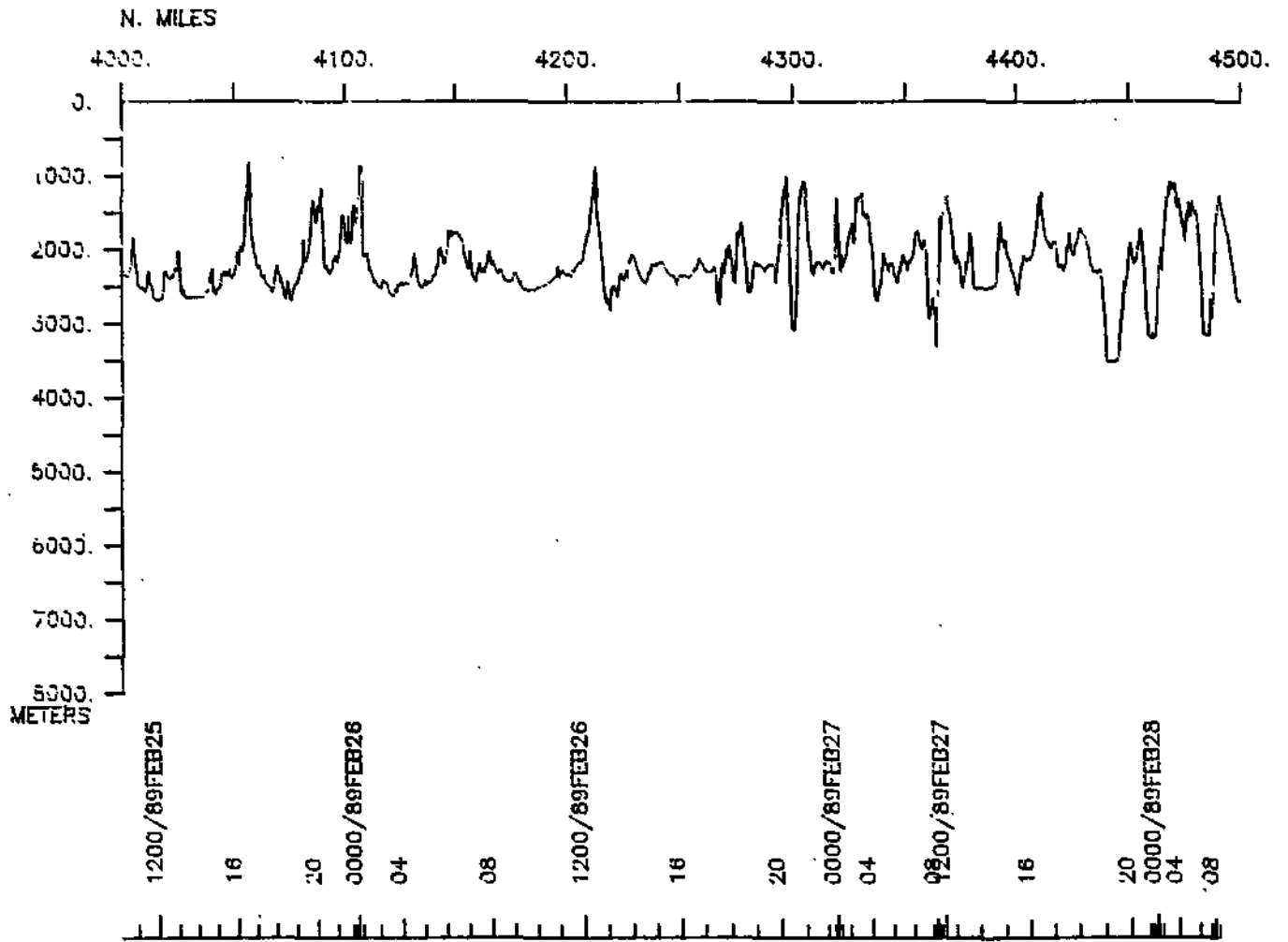
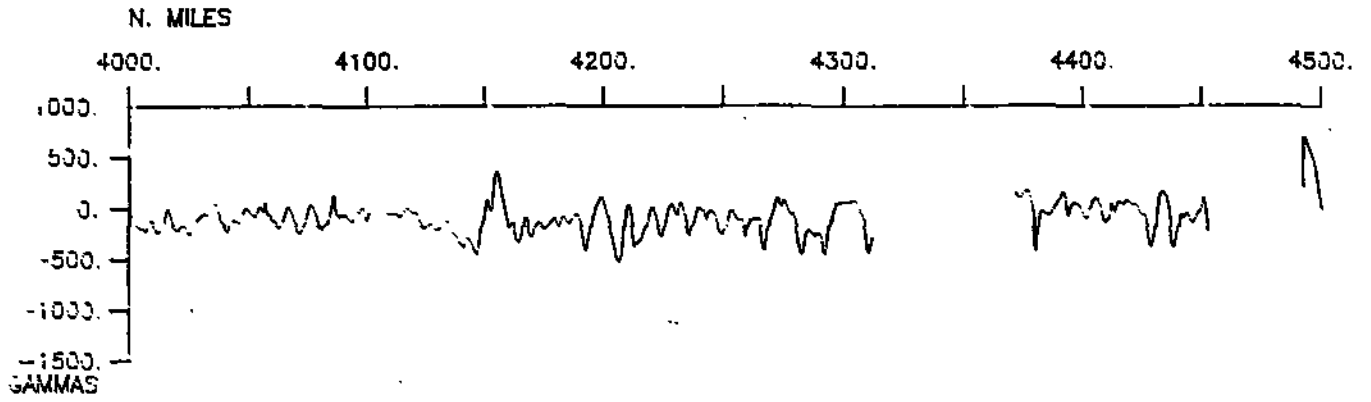
ROUNDABOUT LEG 15 (RNDB15WT)





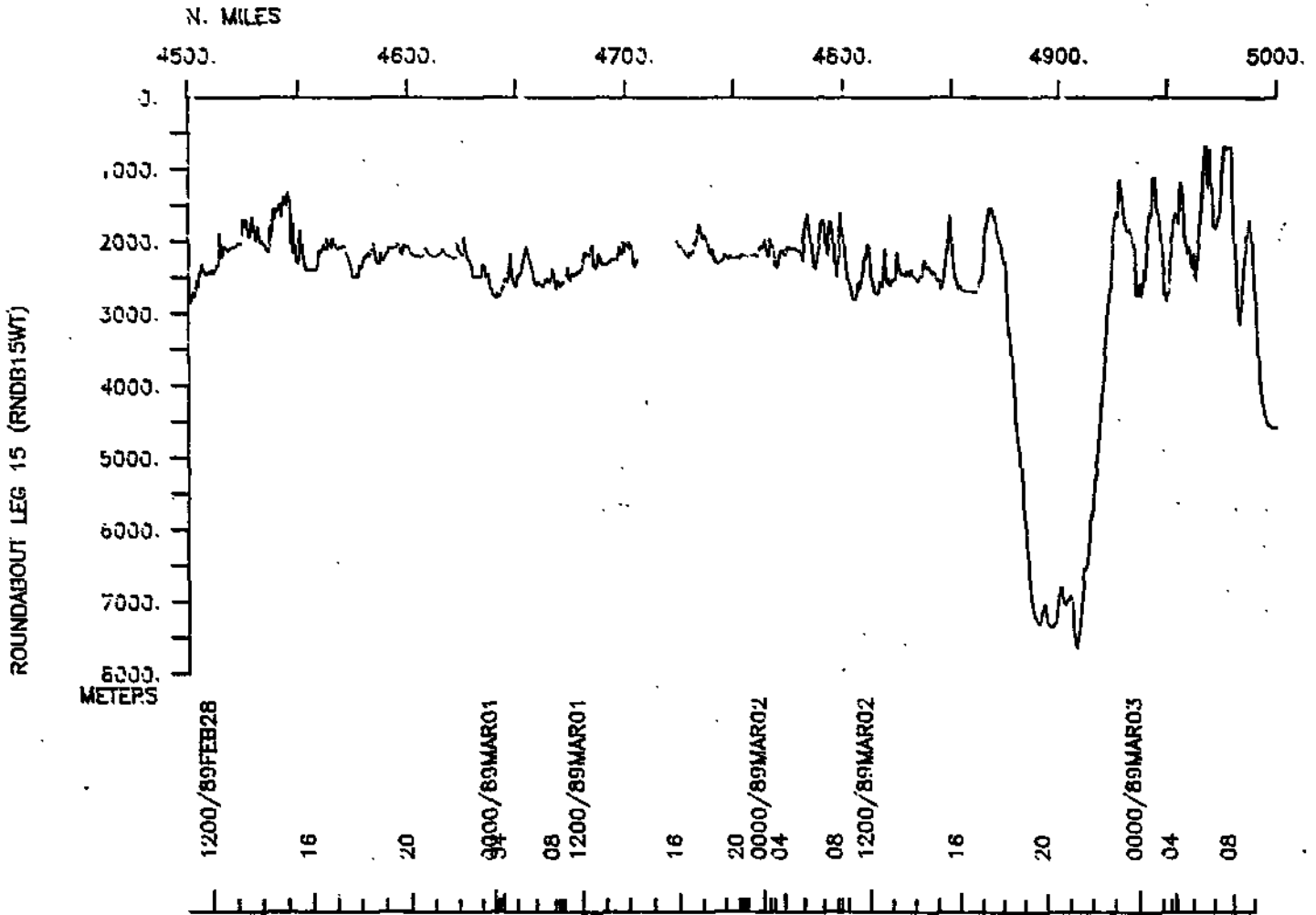
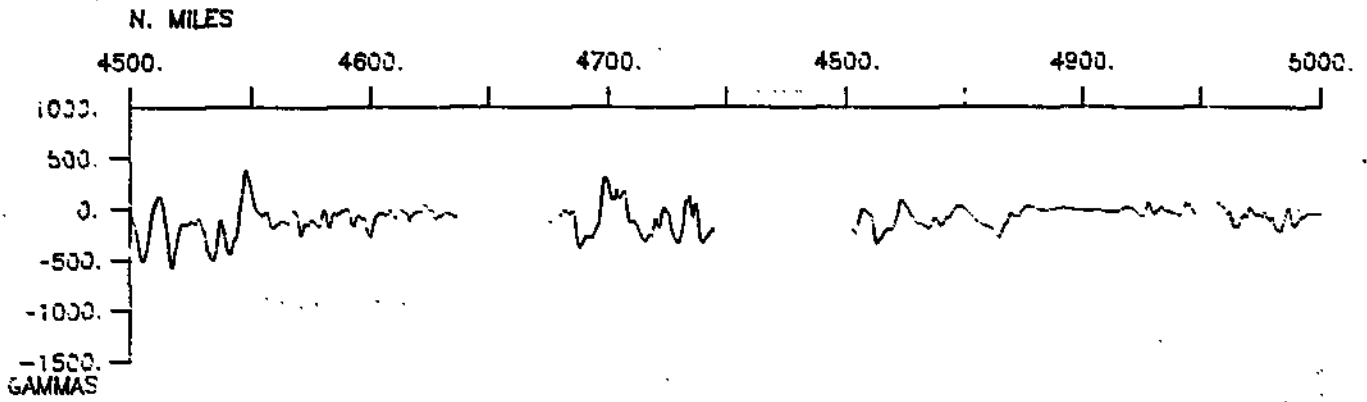


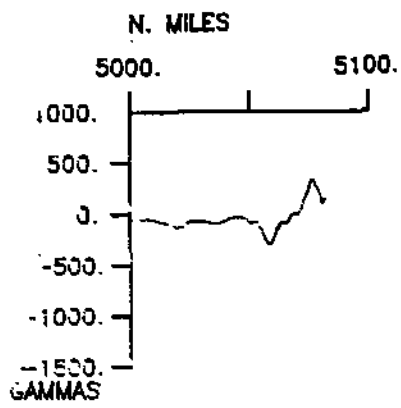
ROUNDABOUT LEG 15 (RNDB15WT)



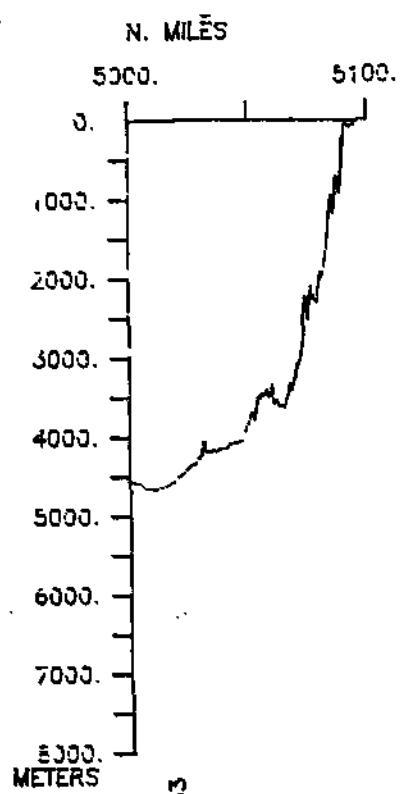
ROUNDABOUT LEG 15 (RNDB15WT)







ROUNDABOUT LEG 15 (RNDB15WT)



1200/851MAR03

16



S.I.O. SAMPLE INDEX

(Issued May 1989)

ROUNDABOUT EXPEDITION

Leg 15

\*\*\*\*\*

R/V T. Washington

Nuku'Alofa, Tonga (1 February 1989)  
to  
Pago Pago, Samoa (3 March 1989)

Chief Scientist:

J. Hawkins (Scripps Institution of Oceanography)

The Sample Index is a first level interdisciplinary listing of time, position, sample identification and disposition of all samples, records and measurements collected on this cruise leg. The index data are encoded at sea by the resident marine technician and processed on shore by the S.I.O. Geological Data Center shortly after the completion of the cruise leg.

Positions are interpolated on the basis of sample time by comparison to a single, edited navigation file. Samples beginning at one time and position and ending at another are entered on two consecutive lines. Disposition and sample type are represented by three and four character codes to permit further computer searches on these parameters. (Listings defining these codes are available from the Geological Data Center.)

GDC Cruise I.D.# 239

\*\*\*\* PORTS \*\*\*

1906 010289	LGPT B NUKU'ALOFA, TONGA	21-050S 175-124W sRNDB15WT
1908 030389	LGPT E PAGO PAGO, SAMOA	14-020S 170-066W fRNDB15WT

\*\*\*\*PERSONNEL\*\*\*\*

	***NAME***	***TITLE***	***AFFILIATION***	**CRID**
PECS GRD	HAWKINS, J.	CHIEF SCIENTIST	SCRIPPS INSTITUTION	RNDB15WT
PESP SIO	HAWKINS, D.	WATCH STANDER	SCRIPPS INSTITUTION	RNDB15WT
PEST GRD	FLORENDO, F.	GRAD STUDENT	SCRIPPS INSTITUTION	RNDB15WT
PEBE STS	HAINES, C.	SEABEAM ENGINEER	SCRIPPS INSTITUTION	RNDB15WT
PERT STS	HARGREAVES, G.	RESIDENT TECH.	SCRIPPS INSTITUTION	RNDB15WT
PEST IGP	LAHAV, D.	GRAD STUDENT	SCRIPPS INSTITUTION	RNDB15WT
PEST GRD	NILSSON, K.	GRAD STUDENT	SCRIPPS INSTITUTION	RNDB15WT
PESP GBN	PARSON, L.	SCIENTIST	INS.OF OCEAN.SCI.,ENG.	RNDB15WT
PEST GRD	RUBEN, K.	GRAD STUDENT	SCRIPPS INSTITUTION	RNDB15WT
PEBO STS	SMITH, S.	SEABEAM OPERATOR	SCRIPPS INSTITUTION	RNDB15WT
PECT STS	STUBER, D.	COMPUTER TECH.	SCRIPPS INSTITUTION	RNDB15WT
PEOB OBS	SOAKAI, S.	OBSERVER	TONGA	RNDB15WT

\*\*\*\*NOTES\*\*\*\*

#AN 'X' IN THE (B)EGIN/(E)ND COLUMN FOLLOWING THE SAMPLE CODE INDICATES NO  
 #SAMPLE OR DATA RECOVERED. A 'C' INDICATES CONTINUATION OF DATA COLLECTION  
 #FROM BEFORE THE BEGINNING OR AFTER THE END OF A PARTICULAR LEG. (MOORED  
 #BOTTOM INSTRUMENTS, FOR EXAMPLE.) THE NUMBER APPEARING IN THE COLUMNS  
 #BETWEEN THE SAMPLE IDENTIFIER AND THE DISPOSITION CODE, FOR MANY SAMPLE  
 #ENTRIES, IS THE WATER DEPTH IN CORRECTED METERS. POSITIONS ARE IN TENTHS  
 #OF MINUTES.

#GMT #TIME #	DDMMYY DATE ---	LOC TIME ---	T Z	SAMP CODE	SAMPLE IDENTIFIER	DISP CODE	LAT.	LONG.	CRUISE LEG-SHIP
--------------------	-----------------------	--------------------	--------	--------------	----------------------	--------------	------	-------	--------------------

\*\*\*UNDERWAY DATA CURATOR - S. M. SMITH EXT. 42752

\*\*\*LOG BOOKS\*\*\*

1906	010289			LBW	B UNDERWAY WATCH LOG	GDC	21-050S	175-124W	sRNDB15WT
1904	030389			LBW	E UNDERWAY WATCH LOG	GDC	14-166S	170-410W	sRNDB15WT

\*\*\* ECHO SOUNDER RECORDS \*\*\*

2102	010289			MBMR	B SEABEAM MONITOR R-01	GDC	20-571S	175-118W	sRNDB15WT
1842	030289			MBMR	E SEABEAM MONITOR R-01	GDC	19-480S	177-457W	sRNDB15WT
1844	030289			MBMR	B SEABEAM MONITOR R-02	GDC	19-476S	177-457W	sRNDB15WT
2225	080289			MBMR	E SEABEAM MONITOR R-02	GDC	19-338S	175-592W	sRNDB15WT
2225	080289			MBMR	B SEABEAM MONITOR R-03	GDC	19-338S	175-592W	sRNDB15WT
1233	100289			MBMR	E SEABEAM MONITOR R-03	GDC	19-206S	176-160W	sRNDB15WT
1238	100289			MBMR	B SEABEAM MONITOR R-04	GDC	19-212S	176-152W	sRNDB15WT
0543	170289			MBMR	E SEABEAM MONITOR R-04	GDC	15-186S	174-359W	sRNDB15WT
0543	170289			MBMR	B SEABEAM MONITOR R-05	GDC	15-186S	174-359W	sRNDB15WT
0800	190289			MBMR	E SEABEAM MONITOR R-05	GDC	17-535S	176-175W	sRNDB15WT
0802	190289			MBMR	B SEABEAM MONITOR R-06	GDC	17-538S	176-177W	sRNDB15WT
2231	230289			MBMR	E SEABEAM MONITOR R-06	GDC	19-025S	176-345W	sRNDB15WT
2248	230289			MBMR	B SEABEAM MONITOR R-07	GDC	20-411S	175-244W	sRNDB15WT
1920	280289			MBMR	E SEABEAM MONITOR R-07	GDC	16-171S	174-545W	sRNDB15WT
1928	280289			MBMR	B SEABEAM MONITOR R-08	GDC	16-171S	174-545W	sRNDB15WT
1908	030389			MBMR	E SEABEAM MONITOR R-08	GDC	14-166S	170-410W	sRNDB15WT

#GMT #TIME	DDMMYY DATE	LOC TIME	T Z	SAMP CODE	SAMPLE IDENTIFIER	DISP CODE	LAT.	LONG.	CRUISE LEG-SHIP
2102 1930	010289 030289			DPR3 DPR3	B 3.5 KHZ ROLL 01 E 3.5 KHZ ROLL 01	GDC GDC	20-571S 19-465S	175-118W 177-376W	sRNDB15WT sRNDB15WT
1935 1204	030289 060289			DPR3 DPR3	B 3.5 KHZ ROLL 02 E 3.5 KHZ ROLL 02	GDC GDC	19-465S 20-129S	177-367W 176-068W	sRNDB15WT sRNDB15WT
1205 0658	060289 090289			DPR3 DPR3	B 3.5 KHZ ROLL 03 E 3.5 KHZ ROLL 03	GDC GDC	20-129S 19-242S	176-067W 175-593W	sRNDB15WT sRNDB15WT
0659 2327	090289 110289			DPR3 DPR3	B 3.5 KHZ ROLL 04 E 3.5 KHZ ROLL 04	GDC GDC	19-242S 19-161S	175-593W 176-106W	sRNDB15WT sRNDB15WT
2334 1500	110289 150289			DPR3 DPR3	B 3.5 KHZ ROLL 05 E 3.5 KHZ ROLL 05	GDC GDC	19-156S 15-333S	176-114W 174-422W	sRNDB15WT sRNDB15WT
1522 2340	150289 180289			DPR3 DPR3	B 3.5 KHZ ROLL 06 E 3.5 KHZ ROLL 06	GDC GDC	15-309S 17-477S	174-433W 176-208W	sRNDB15WT sRNDB15WT
354 1446	180289 210289			DPR3 DPR3	B 3.5 KHZ ROLL 07 E 3.5 KHZ ROLL 07	GDC GDC	17-495S 19-135S	176-185W 176-310W	sRNDB15WT sRNDB15WT
1452 2044	210289 240289			DPR3 DPR3	B 3.5 KHZ ROLL 08 E 3.5 KHZ ROLL 08	GDC GDC	19-142S 18-409S	176-301W 177-130W	sRNDB15WT sRNDB15WT
2047 1522	240289 010389			DPR3 DPR3	B 3.5 KHZ ROLL 09 E 3.5 KHZ ROLL 09	GDC GDC	18-409S 15-356S	177-134W 174-565W	sRNDB15WT sRNDB15WT
1526 1757	010389 030389			DPR3 DPR3	B 3.5 KHZ ROLL 10 E 3.5 KHZ ROLL 10	GDC GDC	15-353S 14-237S	174-571W 170-460W	sRNDB15WT sRNDB15WT

\*\*\* MAGNETIC (EARTH TOTAL FIELD) RECORDS

2202 0605	010289 130289			MGRA MGRA	B MAGNETICS ROLL 01 E MAGNETICS ROLL 01	GDC GDC	20-481S 15-473S	175-190W 174-520W	sRNDB15WT sRNDB15WT
1129 2008	130289 270289			MGRA MGRA	B MAGNETICS ROLL 02 E MAGNETICS ROLL 02	GDC GDC	15-443S 16-108S	174-521W 176-246W	sRNDB15WT sRNDB15WT
1016 1742	280289 030389			MGRA MGRA	B MAGNETICS ROLL 03 E MAGNETICS ROLL 03	GDC GDC	16-116S 14-244S	176-157W 170-482W	sRNDB15WT sRNDB15WT

#GMT #TIME #	DMMYY DATE	LOC TIME Z	T	SAMP CODE	SAMPLE IDENTIFIER	DISP CODE	LAT.	LONG.	CRUISE LEG-SHIP
--------------------	---------------	------------------	---	--------------	----------------------	--------------	------	-------	--------------------

\*\*\* SEA BEAM SWATH BOOK \*\*\*

2101	010289			MBSB B	SB SWATH BOOK	01	GDC 20-572S	175-117W	sRNDB15WT
1405	050289			MBSB E	SB SWATH BOOK	01	GDC 20-009S	176-136W	sRNDB15WT
1405	050289			MBSB B	SB SWATH BOOK	02	GDC 20-009S	176-136W	sRNDB15WT
1559	090289			MBSB E	SB SWATH BOOK	02	GDC 19-023S	176-119W	sRNDB15WT
1559	090289			MBSB B	SB SWATH BOOK	03	GDC 19-023S	176-119W	sRNDB15WT
0045	140289			MBSB E	SB SWATH BOOK	03	GDC 15-339S	174-473W	sRNDB15WT
0047	140289			MBSB B	SB SWATH BOOK	04	GDC 15-339S	174-469W	sRNDB15WT
0857	190289			MBSB E	SB SWATH BOOK	04	GDC 18-011S	176-215W	sRNDB15WT
0857	190289			MBSB B	SB SWATH BOOK	05	GDC 18-011S	176-215W	sRNDB15WT
1431	250289			MBSB E	SB SWATH BOOK	05	GDC 18-174S	177-488W	sRNDB15WT
1432	250289			MBSB B	SB SWATH BOOK	06	GDC 18-173S	177-487W	sRNDB15WT
0649	010389			MBSB E	SB SWATH BOOK	06	GDC 15-531S	174-513W	sRNDB15WT
0650	010389			MBSB B	SB SWATH BOOK	07	GDC 15-531S	174-514W	sRNDB15WT
1908	030389			MBSB E	SB SWATH BOOK	07	GDC 14-166S	170-410W	sRNDB15WT

\*\*\* ROCK DREDGES \*\*\*

2125	020289			DRRO B	DREDGE #1 (478)		GRD 20-098S	177-006W	sRNDB15WT
2358	020289			DRRO E	DREDGE #1		GRD 20-107S	176-586W	sRNDB15WT
0733	030289			DRRO B	DREDGE #2		GRD 20-064S	176-266W	sRNDB15WT
0937	030289			DRRO E	DREDGE #2		GRD 20-061S	176-252W	sRNDB15WT
0826	040289			DRRO B	DREDGE #3		GRD 19-452S	175-577W	sRNDB15WT
0926	040289			DRRO E	DREDGE #3		GRD 19-451S	175-571W	sRNDB15WT

#GMT #TIME #	DDMMYY DATE	LOC TIME Z	T	SAMP CODE	SAMPLE IDENTIFIER	DISP CODE	LAT.	LONG.	CRUISE LEG-SHIP
2043	040289			DRRO	B DREDGE #4	GRD	19-497S	176-063W	sRNDB15WT
0041	050289			DRRO	E DREDGE #4	GRD	19-492S	176-019W	sRNDB15WT
0425	050289			DRRO	B DREDGE #5	GRD	19-545S	176-035W	sRNDB15WT
0646	050289			DRRO	E DREDGE #5	GRD	19-547S	176-036W	sRNDB15WT
0213	060289			DRRO	B DREDGE #6	GRD	20-099S	176-041W	sRNDB15WT
0516	060289			DRRO	E DREDGE #6	GRD	20-109S	176-060W	sRNDB15WT
0925	060289			DRRO	B DREDGE #7	GRD	20-136S	176-067W	sRNDB15WT
1232	060289			DRRO	E DREDGE #7	GRD	20-132S	176-066W	sRNDB15WT
2258	060289			DRRO	B DREDGE #8	GRD	19-590S	176-055W	sRNDB15WT
0105	070289			DRRO	E DREDGE #8	GRD	19-567S	176-054W	sRNDB15WT
2223	070289			DRRO	B DREDGE #9	GRD	19-397S	177-145W	sRNDB15WT
0126	080289			DRRO	E DREDGE #9	GRD	19-406S	177-120W	sRNDB15WT
.951	080289			DRRO	B DREDGE #10	GRD	19-341S	175-588W	sRNDB15WT
2121	080289			DRRO	E DREDGE #10	GRD	19-334S	175-594W	sRNDB15WT
0727	090289			DRRO	B DREDGE #11	GRD	19-242S	175-592W	sRNDB15WT
0906	090289			DRRO	E DREDGE #11	GRD	19-226S	175-595W	sRNDB15WT
0335	100289			DRRO	B DREDGE #12	GRD	19-120S	176-087W	sRNDB15WT
0522	100289			DRRO	E DREDGE #12	GRD	19-107S	176-083W	sRNDB15WT
2238	100289			DRRO	B DREDGE #13	GRD	19-067S	176-328W	sRNDB15WT
0005	110289			DRRO	E DREDGE #13	GRD	19-058S	176-336W	sRNDB15WT
0346	110289			DRRO	B DREDGE #14	GRD	19-104S	176-323W	sRNDB15WT
0437	110289			DRRO	E DREDGE #14	GRD	19-098S	176-328W	sRNDB15WT
1342	110289			DRRO	B DREDGE #15	GRD	19-143S	176-324W	sRNDB15WT
1500	110289			DRRO	E DREDGE #15	GRD	19-135S	176-321W	sRNDB15WT
0807	130289			DRRO	B DREDGE #16	GRD	15-464S	174-501W	sRNDB15WT
0958	130289			DRRO	E DREDGE #16	GRD	15-459S	174-513W	sRNDB15WT



#GMT #TIME #	DMMYY DATE	LOC TIME Z	T	SAMP CODE	SAMPLE IDENTIFIER	DISP CODE	LAT.	LONG.	CRUISE LEG-SHIP
0337	140289			DRRO B	DREDGE #17	GRD	15-326S	174-471W	sRNDB15WT
0532	140289			DRRO E	DREDGE #17	GRD	15-318S	174-476W	sRNDB15WT
2304	140289			DRRO B	DREDGE #18	GRD	15-575S	174-473W	sRNDB15WT
0134	150289			DRRO E	DREDGE #18	GRD	15-562S	174-476W	sRNDB15WT
0748	150289			DRRO B	DREDGE #19	GRD	15-409S	174-491W	sRNDB15WT
0939	150289			DRRO E	DREDGE #19	GRD	15-401S	174-506W	sRNDB15WT
2311	150289			DRRO B	DREDGE #20	GRD	15-262S	174-414W	sRNDB15WT
0050	160289			DRRO E	DREDGE #20	GRD	15-257S	174-427W	sRNDB15WT
2220	160289			DRRO B	DREDGE #21	GRD	15-225S	174-339W	sRNDB15WT
2331	160289			DRRO E	DREDGE #21	GRD	15-226S	174-353W	sRNDB15WT
0329	170289			DRRO B	DREDGE #22	GRD	15-205S	174-367W	sRNDB15WT
0434	170289			DRRO E	DREDGE #22	GRD	15-198S	174-356W	sRNDB15WT
1142	170289			DRRO B	DREDGE #23	GRD	15-303S	174-384W	sRNDB15WT
1322	170289			DRRO E	DREDGE #23	GRD	15-306S	174-385W	sRNDB15WT
2358	170289			DRRO B	DREDGE #24	GRD	15-375S	174-531W	sRNDB15WT
0209	180289			DRRO E	DREDGE #24	GRD	15-360S	174-536W	sRNDB15WT
0307	190289			DRRO B	DREDGE #25	GRD	17-500S	176-157W	sRNDB15WT
0550	190289			DRRO E	DREDGE #25	GRD	17-479S	176-168W	sRNDB15WT
0222	200289			DRRO B	DREDGE #26	GRD	18-154S	176-153W	sRNDB15WT
0443	200289			DRRO E	DREDGE #26	GRD	18-137S	176-157W	sRNDB15WT
1501	200289			DRRO B	DREDGE #27	GRD	18-298S	176-210W	sRNDB15WT
1713	200289			DRRO E	DREDGE #27	GRD	18-297S	176-230W	sRNDB15WT
0315	210289			DRRO B	DREDGE #28	GRD	18-485S	176-274W	sRNDB15WT
0704	210289			DRRO E	DREDGE #28	GRD	18-479S	176-316W	sRNDB15WT
2024	210289			DRRO B	DREDGE #29	GRD	19-225S	176-350W	sRNDB15WT
2147	210289			DRRO E	DREDGE #29	GRD	19-218S	176-362W	sRNDB15WT

#GMT #TIME #	DDMMYY DATE	LOC TIME Z	T	SAMP CODE	SAMPLE IDENTIFIER	DISP CODE	LAT.	LONG.	CRUISE LEG-SHIP
0138	220289			DRRO B	DREDGE #30	GRD	19-174S	176-322W	sRNDB15WT
0347	220289			DRRO E	DREDGE #30	GRD	19-187S	176-316W	sRNDB15WT
1019	220289			DRRO B	DREDGE #31	GRD	19-222S	176-095W	sRNDB15WT
1237	220289			DRRO E	DREDGE #31	GRD	19-200S	176-102W	sRNDB15WT
2130	220289			DRRO B	DREDGE #32	GRD	20-064S	176-092W	sRNDB15WT
2331	220289			DRRO E	DREDGE #32	GRD	20-071S	176-098W	sRNDB15WT
2032	230289			DRRO B	DREDGE #33	GRD	19-020S	176-336W	sRNDB15WT
2251	230289			DRRO E	DREDGE #33	GRD	19-023S	176-344W	sRNDB15WT
0315	240289			DRRO B	DREDGE #34	GRD	19-010S	176-276W	sRNDB15WT
0424	240289			DRRO E	DREDGE #34	GRD	19-012S	176-268W	sRNDB15WT
1115	240289			DRRO B	DREDGE #35	GRD	18-357S	176-277W	sRNDB15WT
1342	240289			DRRO E	DREDGE #35	GRD	18-359S	176-261W	sRNDB15WT
2232	240289			DRRO B	DREDGE #36	GRD	18-400S	177-158W	sRNDB15WT
2357	240289			DRRO E	DREDGE #36	GRD	18-391S	177-156W	sRNDB15WT
0440	250289			DRRO B	DREDGE #37	GRD	18-231S	177-169W	sRNDB15WT
0715	250289			DRRO E	DREDGE #37	GRD	18-252S	177-154W	sRNDB15WT
2238	250289			DRRO B	DREDGE #38	GRD	18-079S	177-385W	sRNDB15WT
0137	260289			DRRO E	DREDGE #38	GRD	18-058S	177-362W	sRNDB15WT
2337	260289			DRRO B	DREDGE #39	GRD	15-553S	177-072W	sRNDB15WT
0143	270289			DRRO E	DREDGE #39	GRD	15-557S	177-075W	sRNDB15WT
0828	270289			DRRO B	DREDGE #40	GRD	16-025S	177-068W	sRNDB15WT
1146	270289			DRRO E	DREDGE #40	GRD	16-005S	177-071W	sRNDB15WT
2350	270289			DRRO B	DREDGE #41	GRD	16-128S	176-224W	sRNDB15WT
0213	280289			DRRO E	DREDGE #41	GRD	16-114S	176-225W	sRNDB15WT
0650	280289			DRRO B	DREDGE #42	GRD	16-144S	176-176W	sRNDB15WT
0910	280289			DRRO E	DREDGE #42	GRD	16-127S	176-176W	sRNDB15WT

#GMT #TIME #	DMMYY DATE	LOC TIME Z	T	SAMP CODE	SAMPLE IDENTIFIER	DISP CODE	LAT.	LONG.	CRUISE LEG-SHIP
0055	010389			DRRO B	DREDGE #43	GRD	16-078S	174-472W	sRNDB15WT
0309	010389			DRRO E	DREDGE #43	GRD	16-060S	174-478W	sRNDB15WT
0809	010389			DRRO B	DREDGE #44	GRD	15-517S	174-511W	sRNDB15WT
0959	010389			DRRO E	DREDGE #44	GRD	15-506S	174-506W	sRNDB15WT
1938	010389			DRRO B	DREDGE #45	GRD	15-368S	174-487W	sRNDB15WT
2207	010389			DRRO E	DREDGE #45	GRD	15-352S	174-474W	sRNDB15WT
0120	020389			DRRO B	DREDGE #46	GRD	15-295S	174-443W	sRNDB15WT
0237	020389			DRRO E	DREDGE #46	GRD	15-288S	174-432W	sRNDB15WT
0752	020389			DRRO B	DREDGE #47	GRD	15-182S	174-262W	sRNDB15WT
0953	020389			DRRO E	DREDGE #47	GRD	15-184S	174-253W	sRNDB15WT
0227	030389			DRRO B	DREDGE #48	GRD	15-001S	172-169W	sRNDB15WT
0415	030389			DRRO E	DREDGE #48	GRD	15-004S	172-151W	sRNDB15WT

\*\*\*\*

END SAMPLE INDEX