

INFORMAL REPORT AND INDEX OF
NAVIGATION, DEPTH, MAGNETIC AND SUBBOTTOM PROFILER DATA
(Issued July 1988)

RAITT EXPEDITION

LEG 3

Manzanillo, Mexico (15 March 1988)
to
San Diego, California (2 April 1988)

R/V Washington

Chief Scientist - P. Lonsdale (SIO)

Resident Marine Technician - R. Comer

Post-Cruise Processing and Report Preparation
by Geological Data Center, Scripps Institution of Oceanography

Data Collection and Processing Funded by ONR-0472
and NSF Grant Number OCE87-02835

NOTE: This is an index of underway geophysical data edited
and processed after the completion of the cruise leg and is
intended primarily for informal use within the institution.
This document is not to be reproduced or distributed outside
Scripps without prior approval of the chief scientist or the
Geological Data Center, Scripps Institution of Oceanography,
La Jolla, California 92093.

GDC Cruise I.D.# 237

INFORMAL REPORT AND INDEX OF NAVIGATION
AND UNDERWAY GEOPHYSICAL DATA

Processed by the Geological Data Center
Scripps Institution of Oceanography

Contents:

- Index Chart - gives track of cruise leg, dates, ports, and mileage of each type of data collected.
- Track Charts - annotated with dates and hour ticks.
- Profiles - depth, magnetic anomaly and gravity free air anomaly vs. distance. Sections of track having subbottom profiles (airgun or watergun) records have a wide black line along the bottom of the profile. Sections having Sea Beam are indicated by a narrow black line.
- Sample Index - list of beginning and end times and positions of all underway records as well as all other samples and measurements (geology, biology, physical oceanography, etc.) collected on the cruise leg.

NOTE: One or more of the underway data types may not be collected on a given cruise leg.

For information on the availability and reproduction costs of data in the following forms, contact S. M. Smith, Curator, Geological Data Center, Scripps Institution of Oceanography, La Jolla, CA 92093. Phone (619)534-2752.

1. Navigation listing with times and positions of course and speed changes, fixes and drift velocity.
2. Depth compilation plots - compilation plots at the traditional scale of 4in/degree longitude (1:1,000,000) are no longer produced for Sea Beam cruises. Custom plots may be requested of vertical beam (2 $\frac{2}{3}$ degree beam width) depths retrieved at one minute intervals of ship time.
3. Plots of depths, magnetics or gravity profiles along track - custom plots at various map and profile scales on Mercator projection may be requested.
4. Separate time series files of navigation, depth, gravity and magnetics as well as these data merged in the MGD77 Exchange format on magnetic tape.
5. Microfilm or Xerox copies of:
 - a. Echosounder records - 12 and 3.5 kHz frequency
 - b. Subbottom profiler records
 - c. Magnetometer records
 - d. Gravity records
 - e. Underway data log book

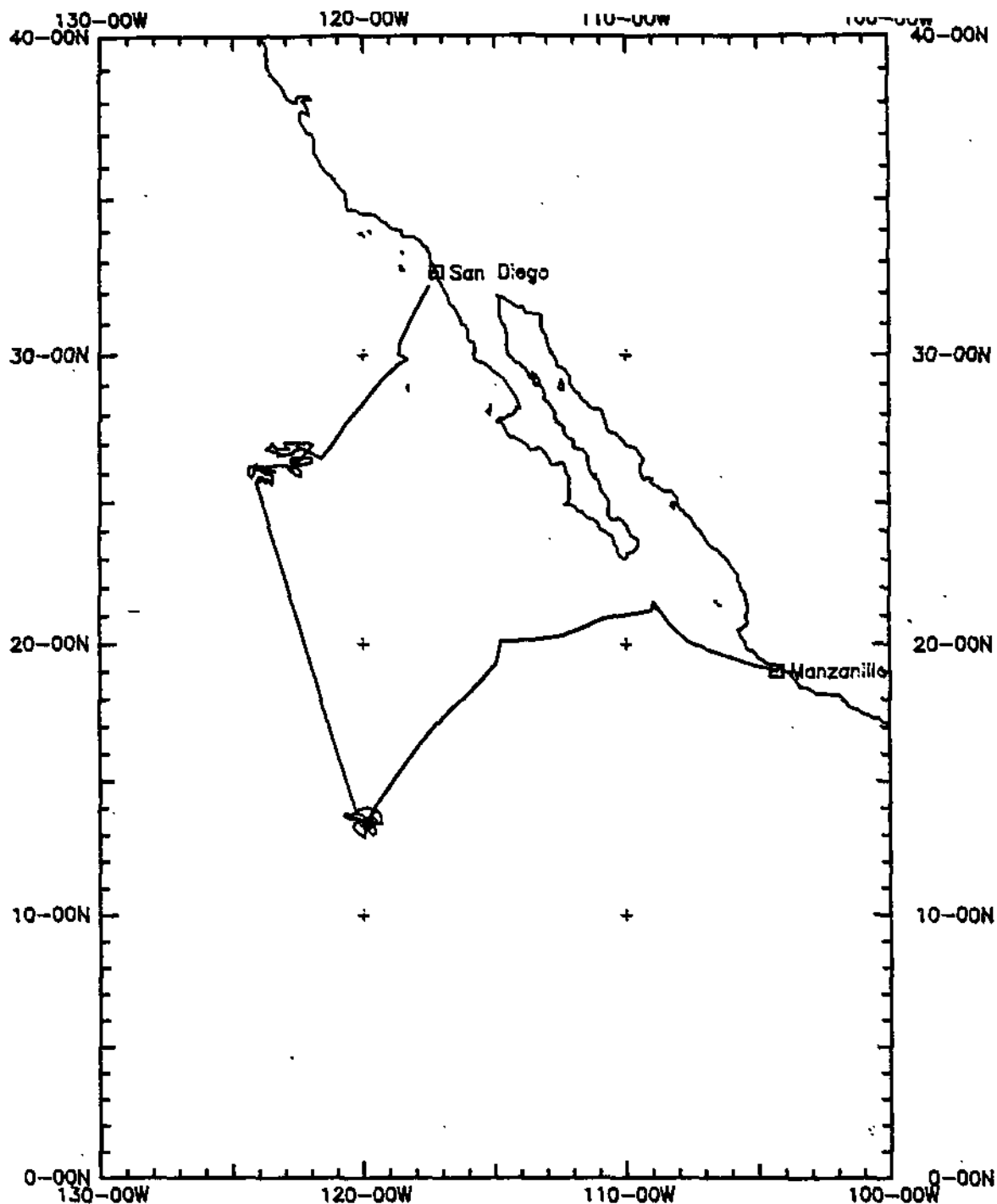
Revised September 1987

SIO Sea Beam Data

The following forms are available, subject to approval of the cruise leg chief scientist:

- 1) Archive copy of contour swath books generated in real time on board ship available for inspection at the data center.
- 2) Microfilm (35mm flowfilm) containing swath books plus, for some cruises, the Sea Beam monitor record and navigation list.
- 3) Sea Beam merged tapes - Sea Beam data merged with navigation. (Navigation is edited to the extent that DR courses and speeds are edited and poor fixes are removed after inspection of drift vectors between fix pairs. No editing is done on the basis of adjusting to overlapping Sea Beam swaths.)
- 4) Archive contour plots - 16"/degree chart scale, with contour interval nominally 50m, are generated for all transit lines. Some survey areas are plotted at appropriate scales as well. Available for inspection at data center; additional copies may be generated from plot files stored on tape.
- 5) Custom generated plots of Sea Beam swaths on Mercator projection in four colors at variable plot scales and contour intervals. There are provisions to adjust positions of individual track lines and to edit out beams (bad data or overlapping data on inside of turns).

revised October 1986

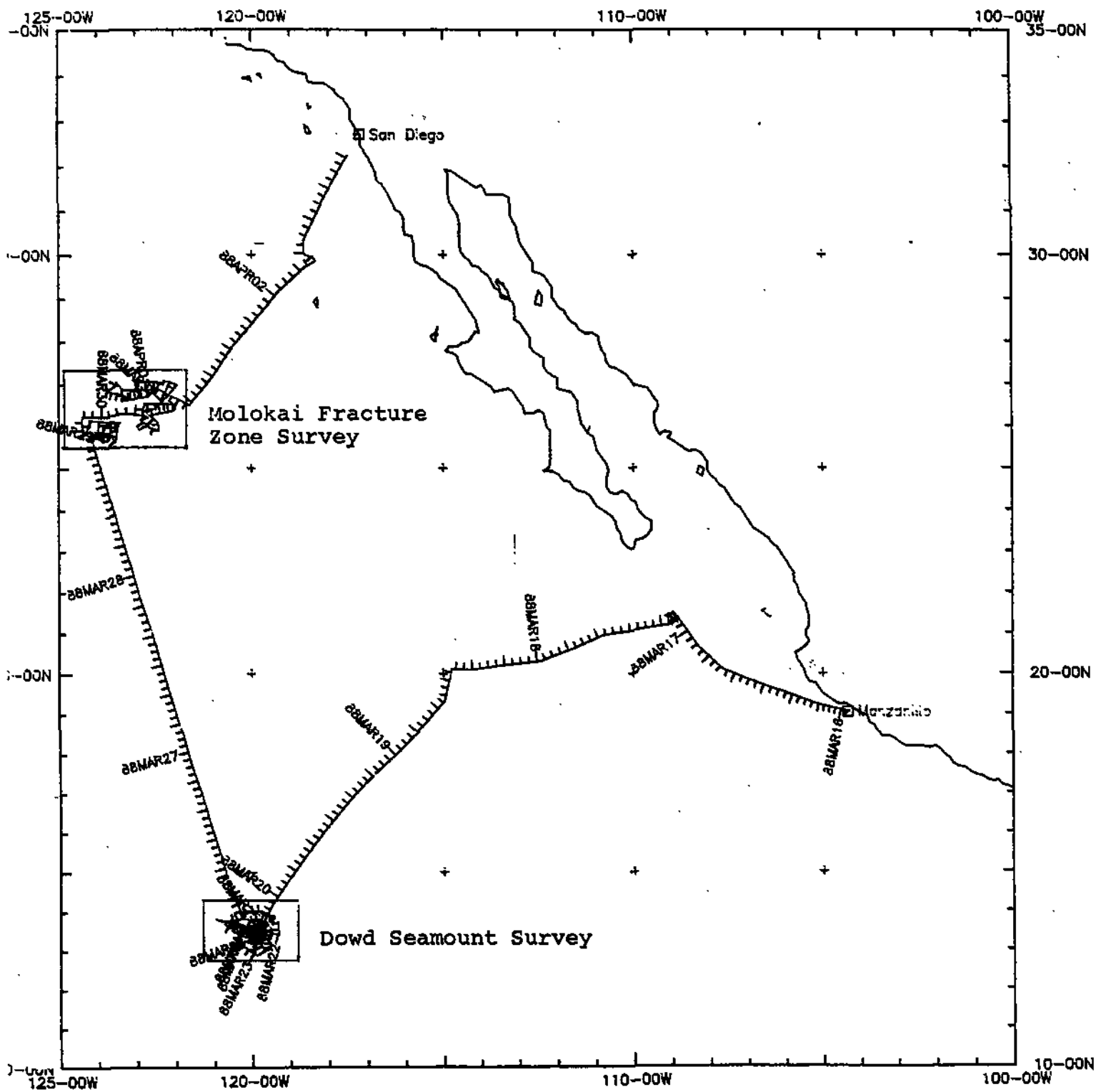


RAITT EXPEDITION LEG 3

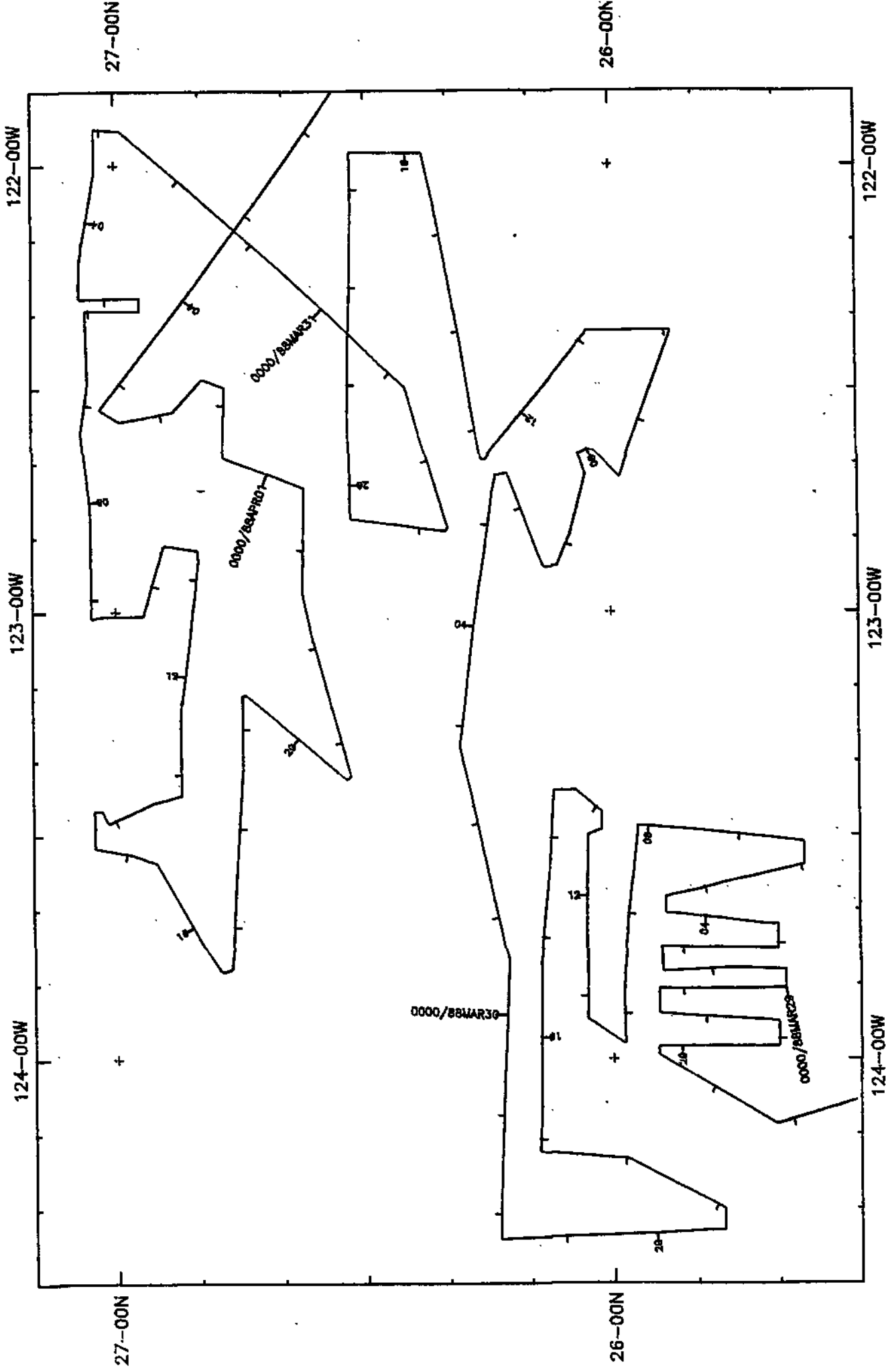
CHIEF SCIENTIST: P. Lonsdale (SIO)
 PORTS: Manzanillo, Mexico - San Diego, Calif.
 DATES: 15 March - 2 April 1988
 SHIP: R/V T. Washington

TOTAL MILEAGE OF UNDERWAY DATA COLLECTED

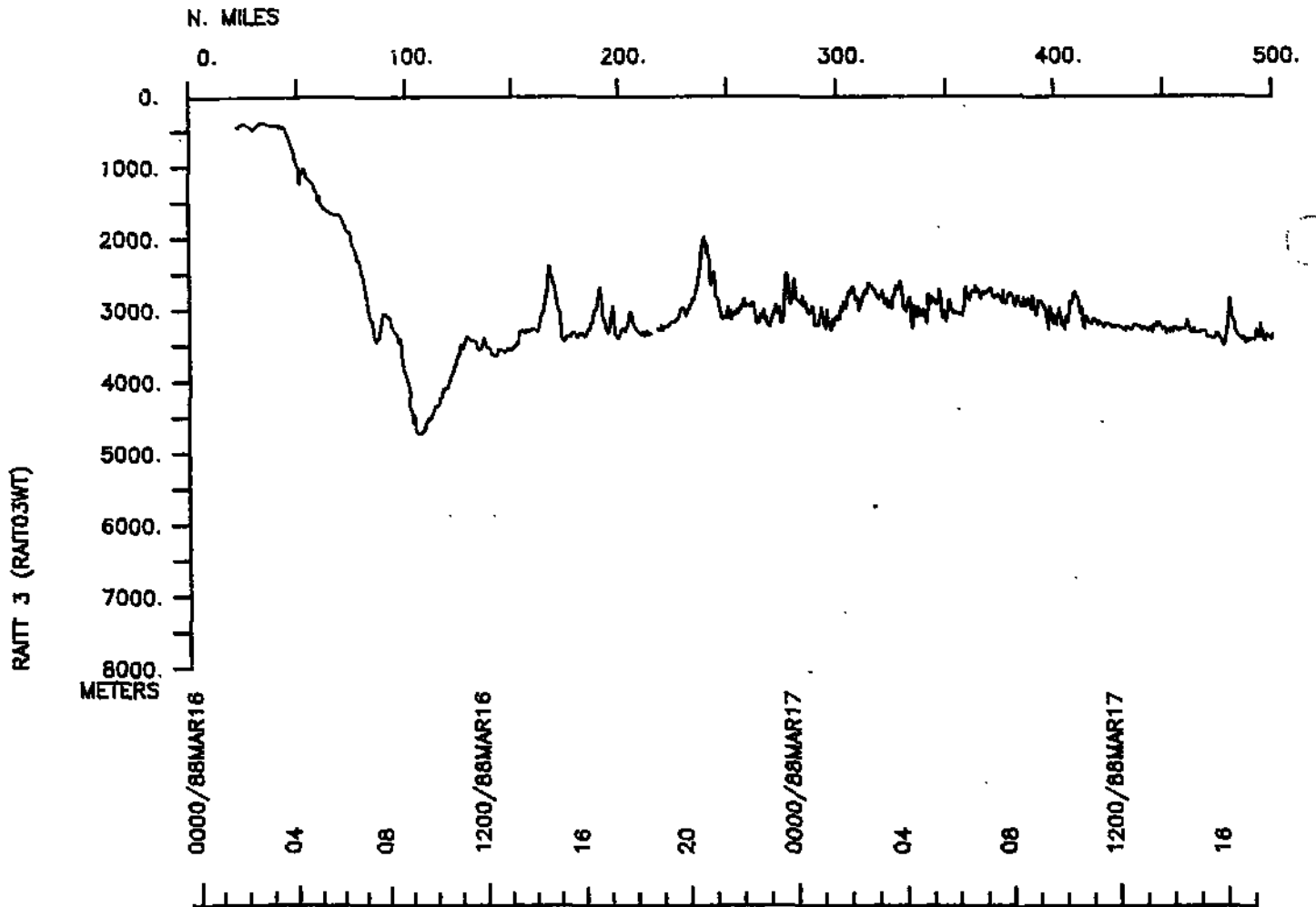
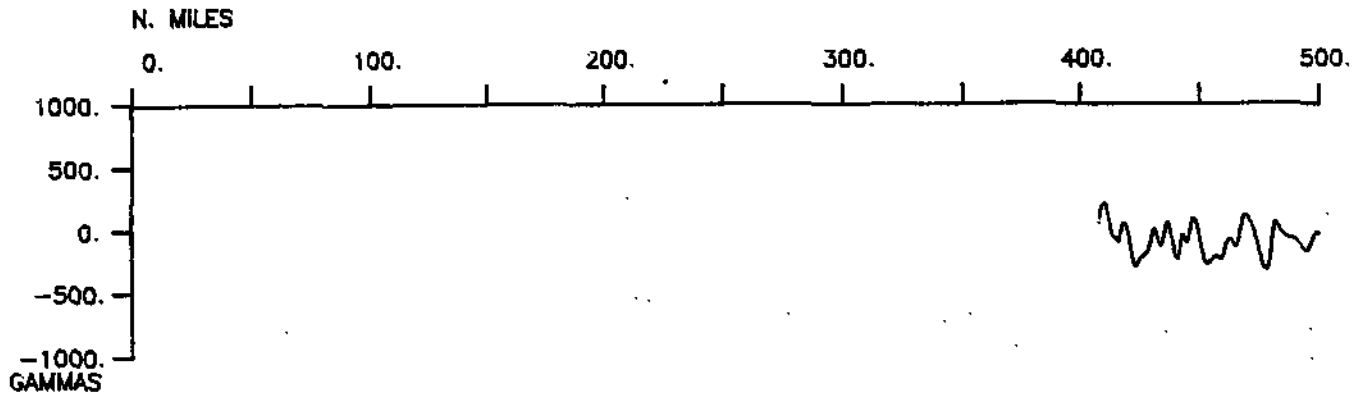
- 1) Cruise - 4546 miles
- 2) Bathymetry - 4521 miles
- 3) Magnetics - 3261 miles
- 4) Seismic Reflection - none collected
- 5) Gravity - collected but not funded for processing
- 6) Sea Beam - 4546 miles



RAIT LEG 3

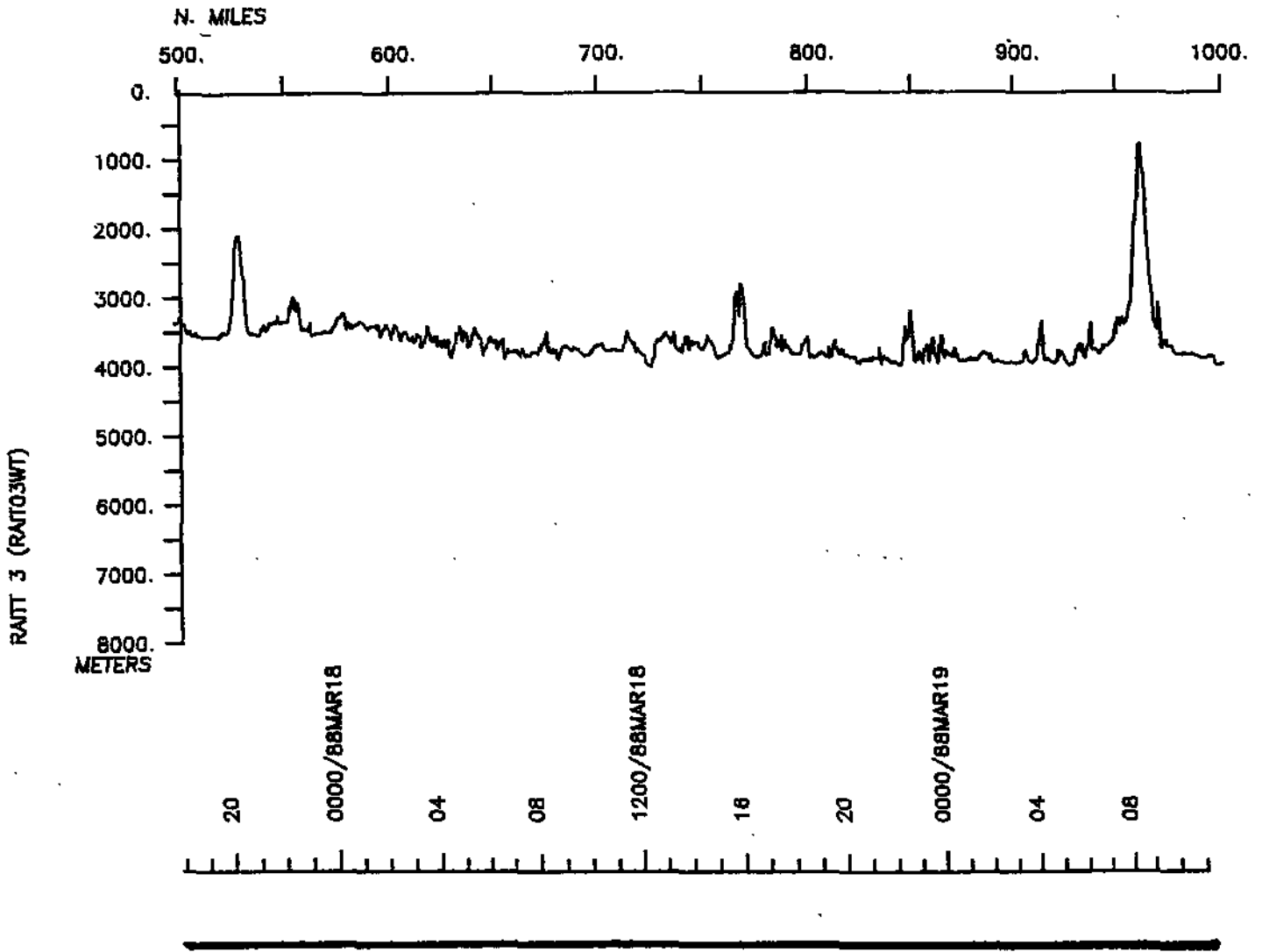
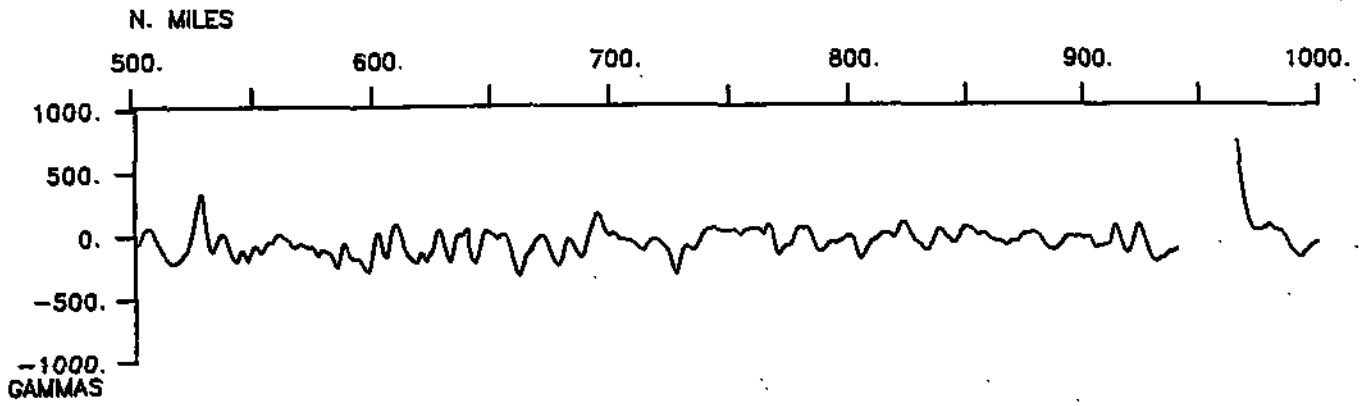


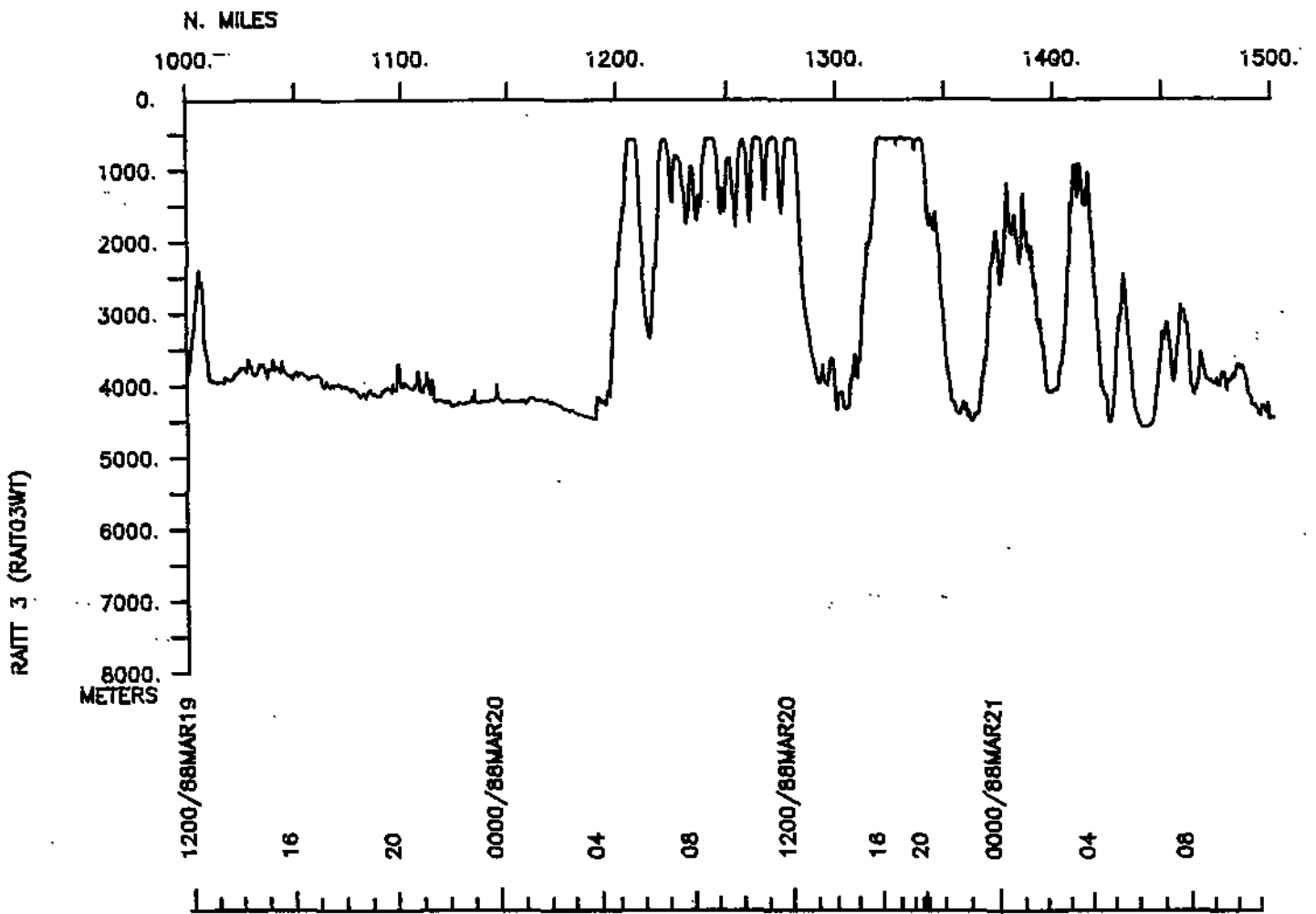
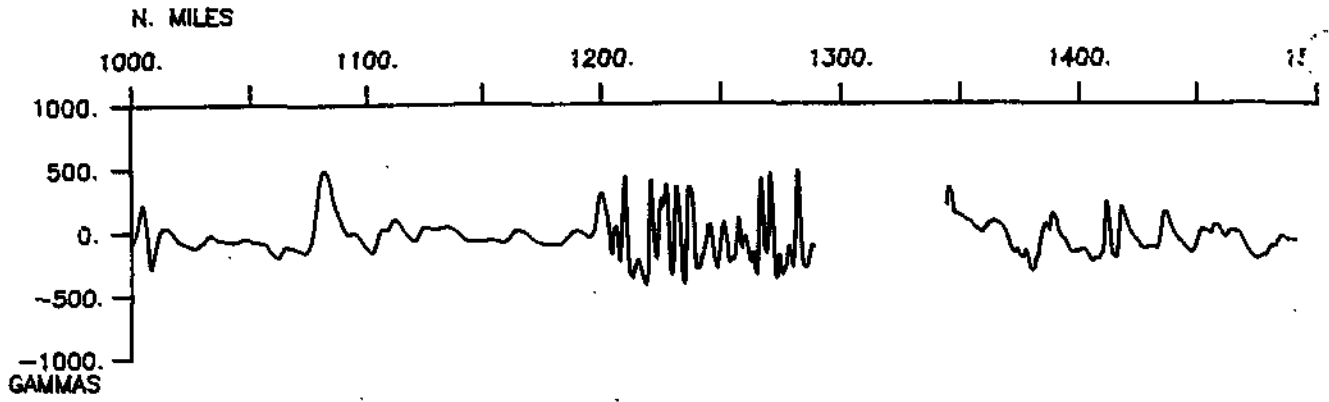
MOJOKAI F.Z./SHIRLEY TROUGH SURVEY
 Met or at 4.8 inches per degree longitude

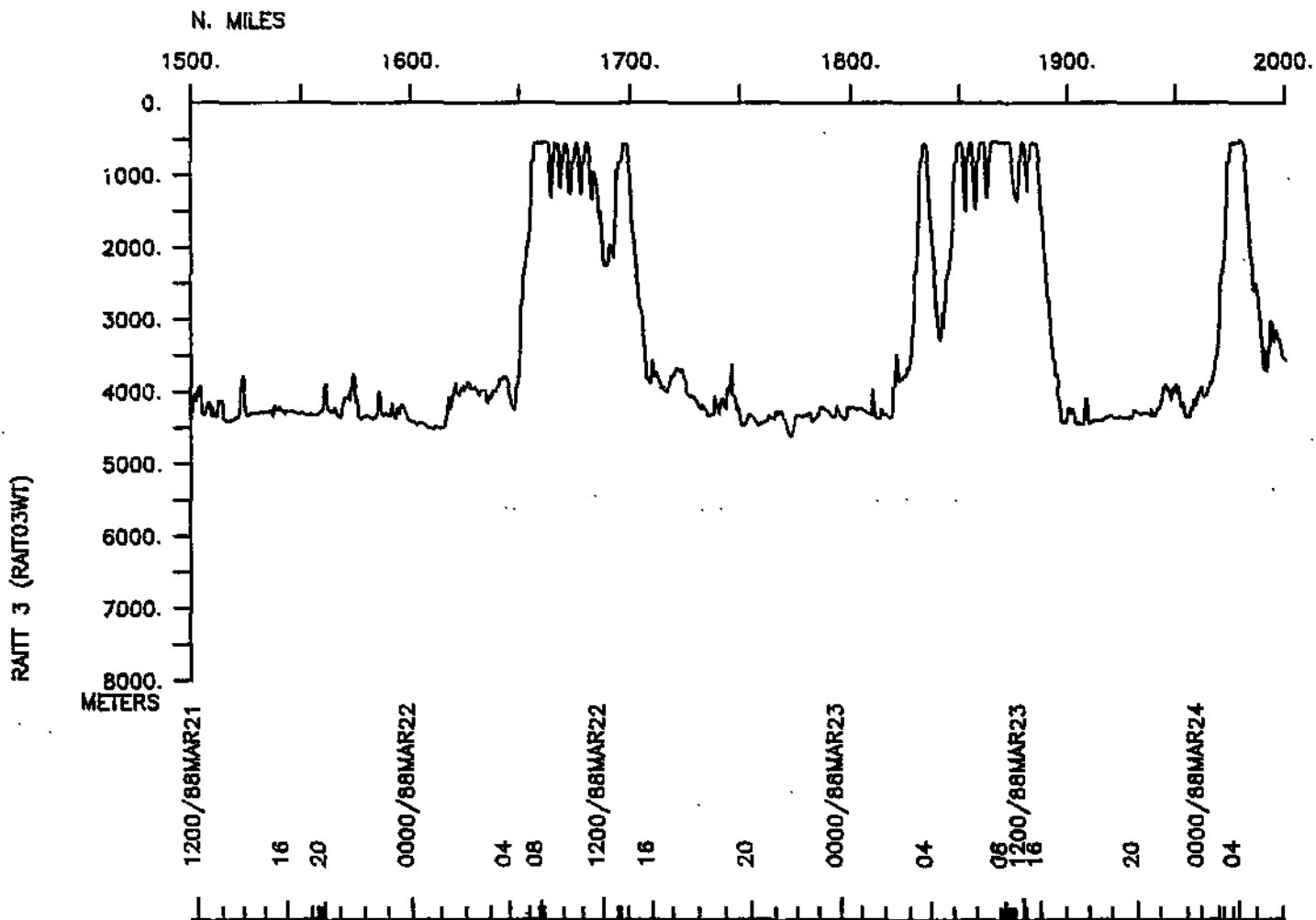
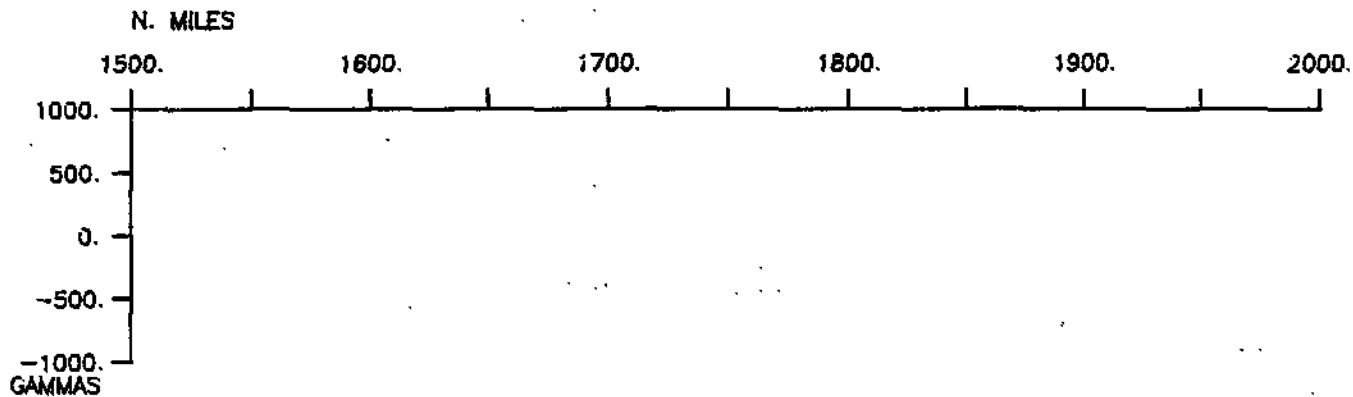


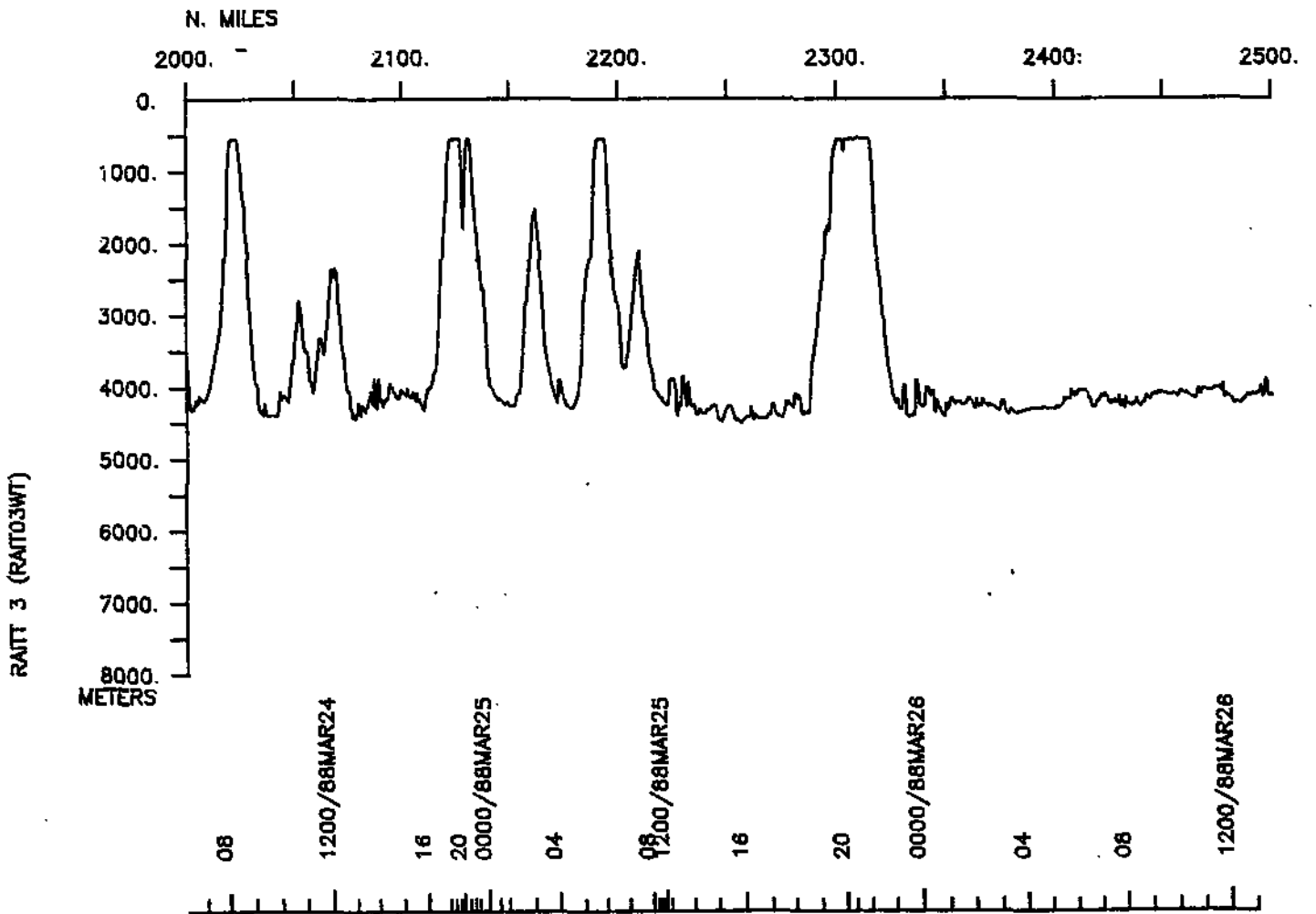
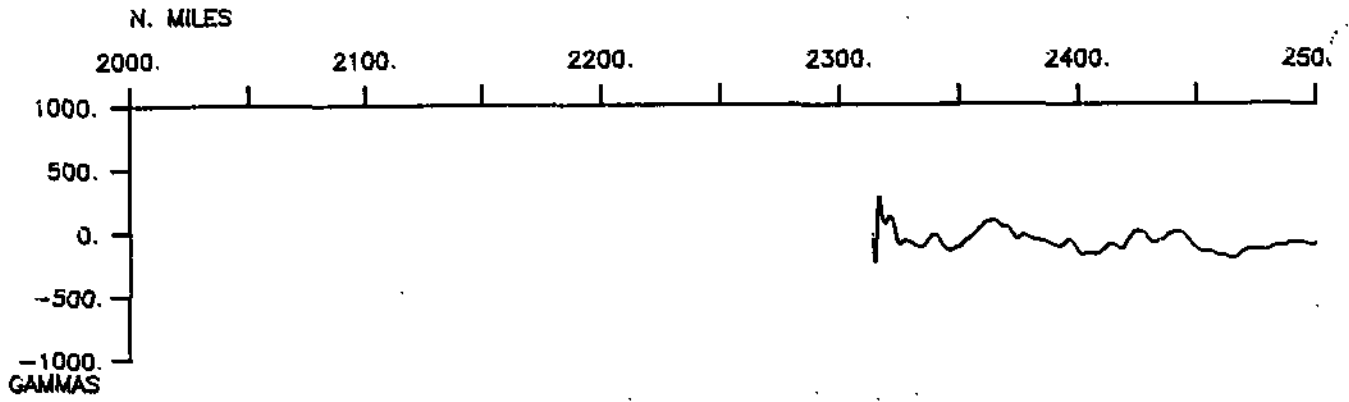
SEABEAM

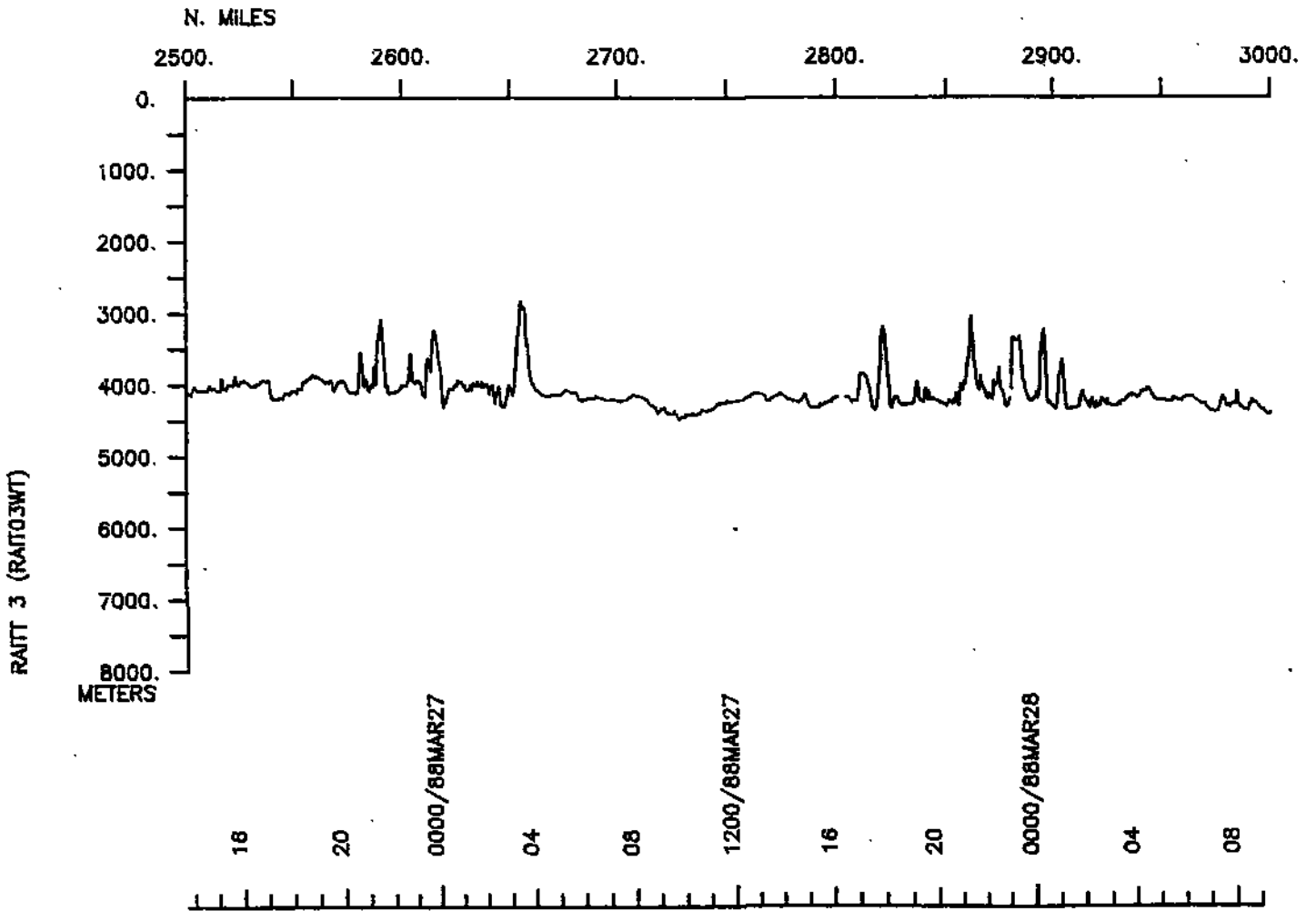
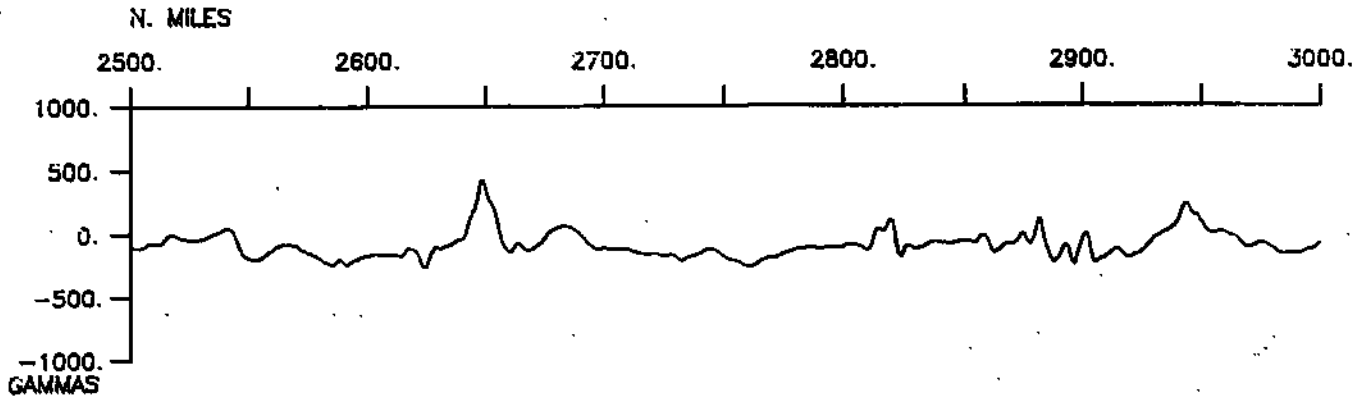


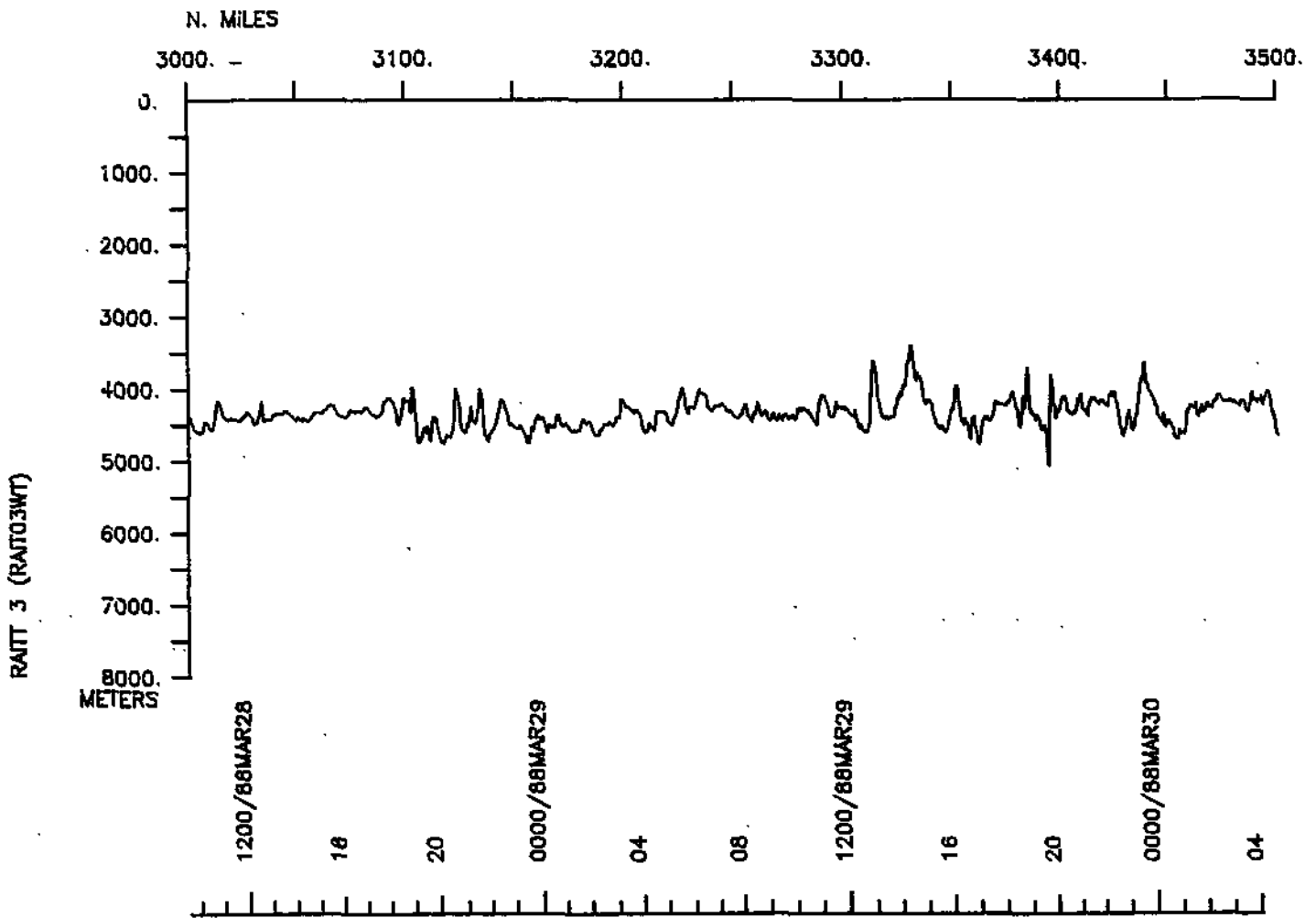
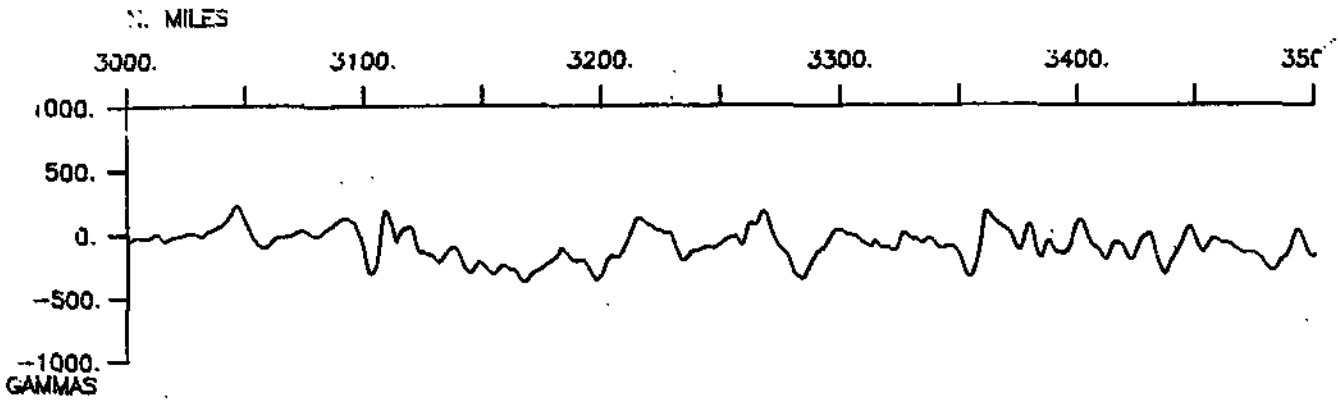


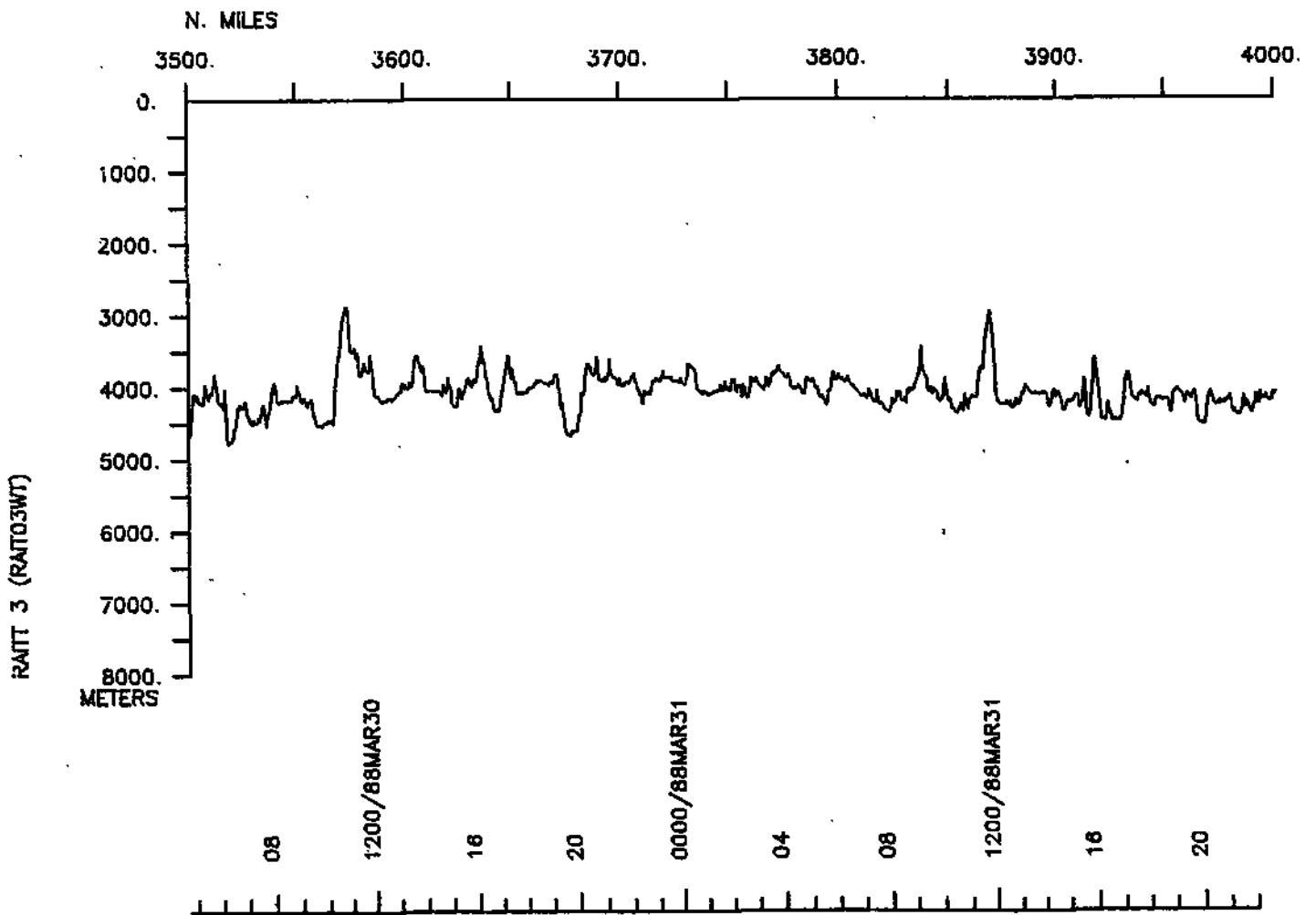
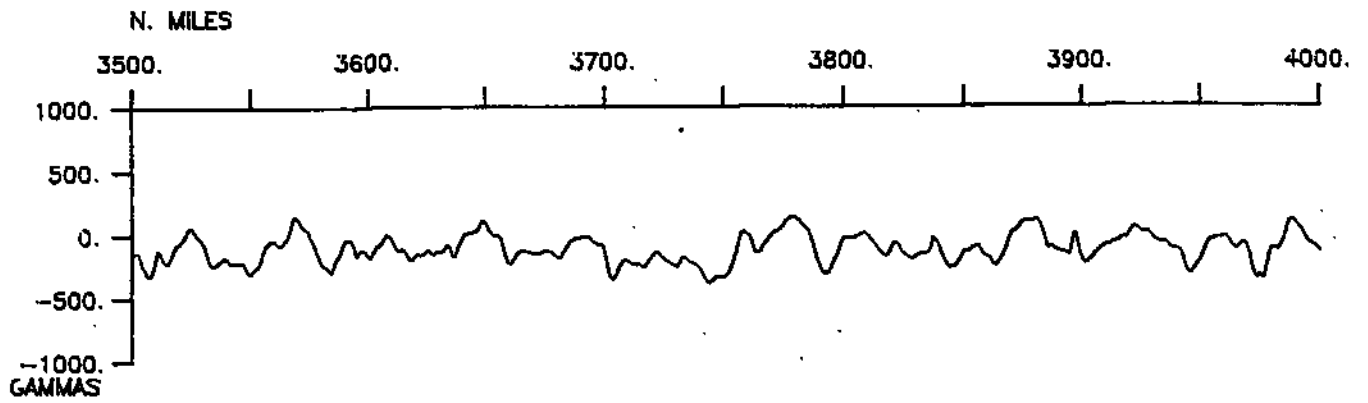


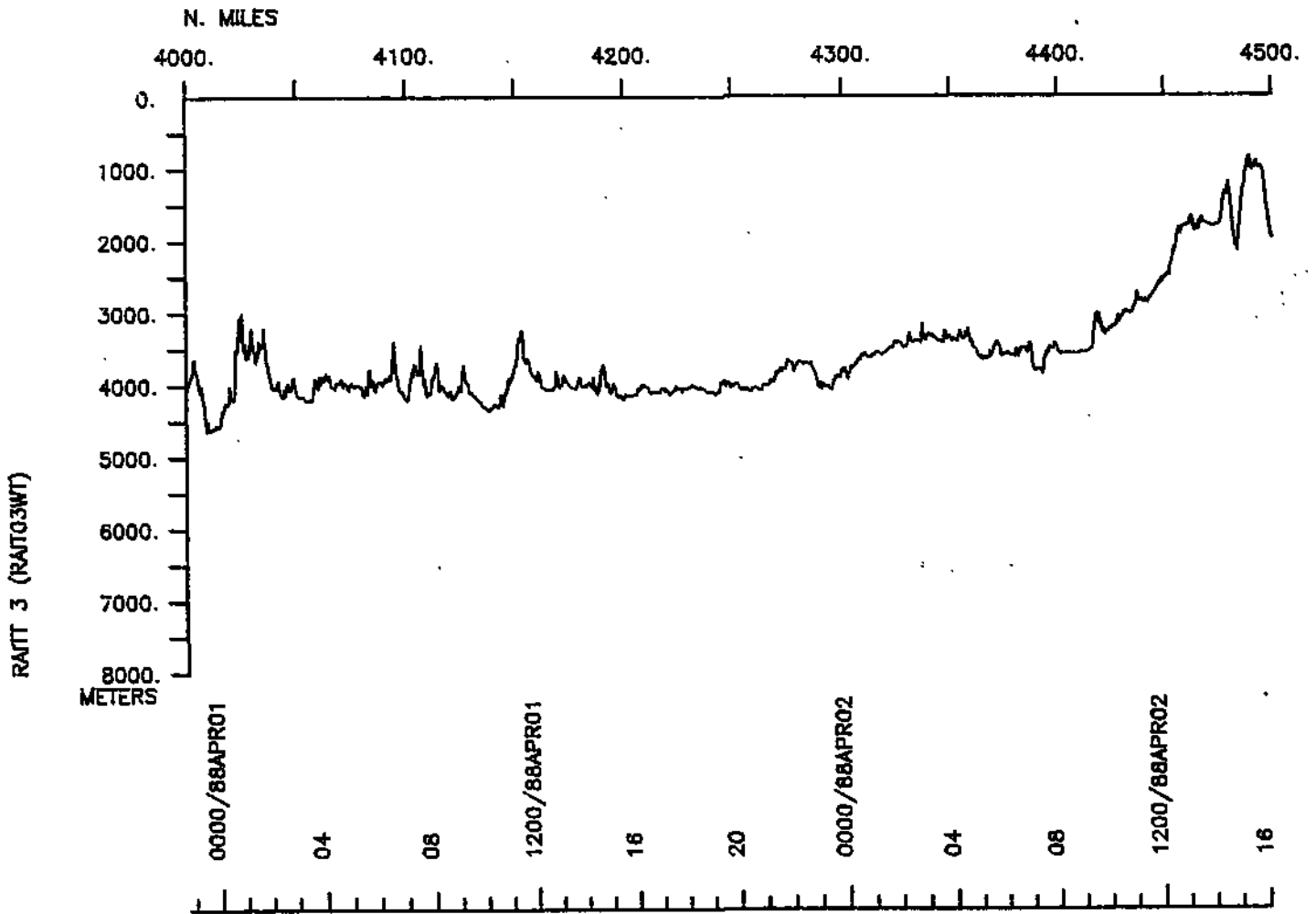
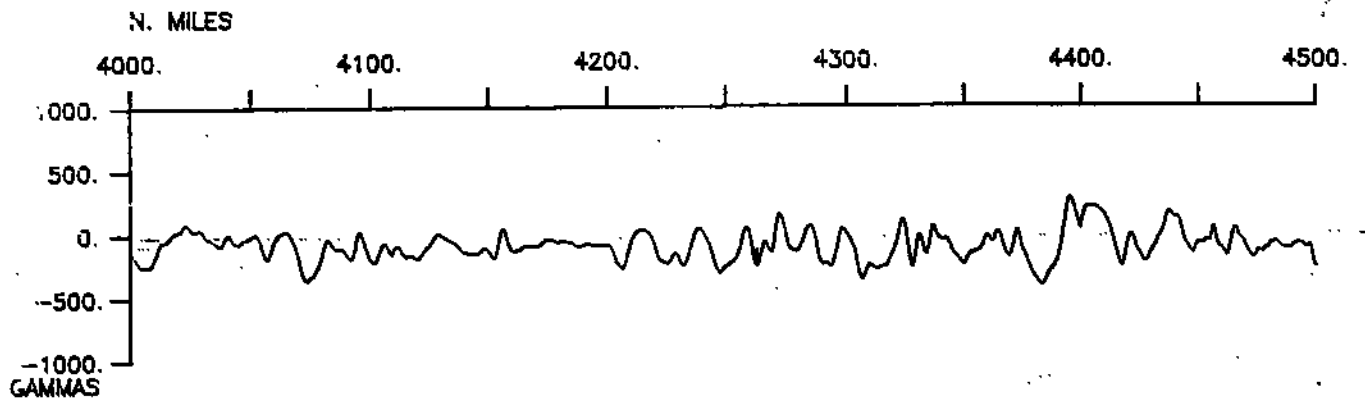


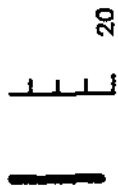
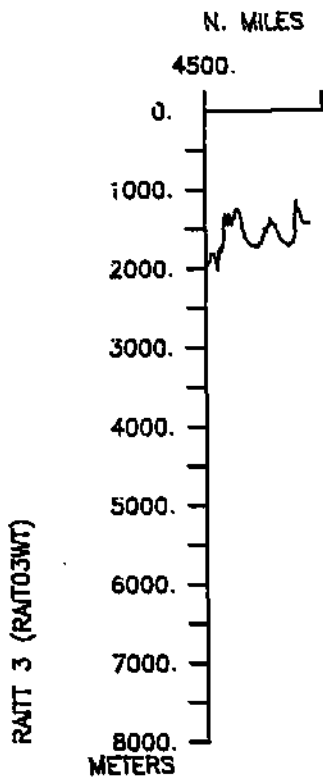
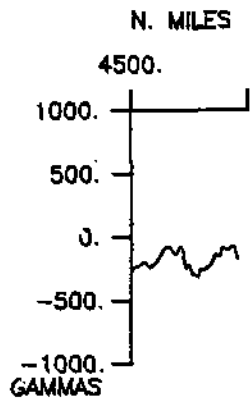












S.I.O. SAMPLE INDEX

(Issued July 1988)

RAITT EXPEDITION

Leg 3

- Manzanillo, Mexico (15 March 1988)
to
San Diego, Calif. (2 April 1988)

R/V T. Washington

Chief Scientist - P. Lonsdale (SIO)

The Sample Index is a first level interdisciplinary listing of time, position, sample identification and disposition of all samples, records and measurements collected on this cruise leg. The index data are encoded at sea by the resident marine technician and processed on shore by the S.I.O. Geological Data Center shortly after the completion of the cruise leg.

Positions are interpolated on the basis of sample time by comparison to a single, edited navigation file. Samples beginning at one time and position and ending at another are entered on two consecutive lines. Disposition and sample type are represented by three and four character codes to permit further computer searches on these parameters. (Listings defining these codes are available from the Geological Data Center.)

GDC Cruise I.D.# 237

****PORTS***

2330 150388	LGPT B MANZANILLO, MEXICO	19-034N 104-201W	fRAIT03WT
2330 020488	LGPT E SAN DIEGO, CALIF.	32-43 N 117-11 W	fRAIT03WT

****PERSONNEL***

	NAME	***TITLE***	***AFFILIATION***	**CRID**
PECS MPL	LONSDALE, DR. P.	CHIEF SCIENTIST	SCRIPPS INSTITUTION	RAIT03WT
PESP MBD	SMITH, DR. K.	ASSOC. RES. BIOL.	SCRIPPS INSTITUTION	RAIT03WT
PESP MIT	SMITH, DR. D.	POST DOC.	MASS. INST. TECHNOLOGY	RAIT03WT
PESP MPL	DEMOUSTIER, DR. C.	RES. OCEANOGR.	SCRIPPS INSTITUTION	RAIT03WT
PERT STS	COMER, R. L.	RESIDENT TECH.	SCRIPPS INSTITUTION	RAIT03WT
PECT STS	STUBER, D.	COMPUTER TECH.	SCRIPPS INSTITUTION	RAIT03WT
PEBE STS	HYLAS, T.	SEABEAM ENG.	SCRIPPS INSTITUTION	RAIT03WT
PEBO STS	ALBRIGHT, U.	SEABEAM PROC.	SCRIPPS INSTITUTION	RAIT03WT
PENT STS	MEAD, R.	MARINE TECH.	SCRIPPS INSTITUTION	RAIT03WT
PESP MPL	FOSTER, A.	ENGINEERING AID	SCRIPPS INSTITUTION	RAIT03WT
PESP MBD	BALDWIN, R.	STAFF RES. ASSIS	SCRIPPS INSTITUTION	RAIT03WT
PEST MPL	DIEU, J.	GRAD. STUDENT	SCRIPPS INSTITUTION	RAIT03WT
PEST UCJ	RITSON, P.	STUDENT	U. OF CAL. SAN DIEGO	RAIT03WT
PEST GRD	FLORENDO, F.	GRAD. STUDENT	SCRIPPS INSTITUTION	RAIT03WT
PEVL MPL	DANES, P.	VOLUNTEER	SCRIPPS INSTITUTION	RAIT03WT
EXN MEX	RUBI, G.	OBSERVER	MEXICO	RAIT03WT

****NOTES***

#AN 'X' IN THE (B)EGIN/(E)ND COLUMN FOLLOWING THE SAMPLE CODE INDICATES NO
 #SAMPLE OR DATA RECOVERED. A 'C' INDICATES CONTINUATION OF DATA COLLECTION
 #FROM BEFORE THE BEGINNING OR AFTER THE END OF A PARTICULAR LEG. (MOORED
 #BOTTOM INSTRUMENTS, FOR EXAMPLE.) THE NUMBER APPEARING IN THE COLUMNS
 #BETWEEN THE SAMPLE IDENTIFIER AND THE DISPOSITION CODE, FOR MANY SAMPLE
 #ENTRIES, IS THE WATER DEPTH IN CORRECTED METERS. POSITIONS ARE IN TENTHS
 #OF MINUTES.

#GMT	DDMMYY	LOC T	SAMP	SAMPLE	DISP	LAT.	LONG.	CRUISE
#TIME	DATE	TIME Z	CODE	IDENTIFIER	CODE			LEG-SHIP

****UNDERWAY DATA CURATOR - S. M. SMITH EXT. 42752

****LOG BOOKS****

2330	150388		LBUW B	UNDERWAY WATCH LOG	GDC 19-034N	104-201W	sRAIT03WT
2005	020488		LBUW E	UNDERWAY WATCH LOG	GDC 32-120N	117-314W	sRAIT03WT

**** ECHO SOUNDER RECORDS - 12 KHZ SEA BEAM MONITOR ****

0136	160388		SBRM B	SEABEAM MONITOR R-01	GDC 19-040N	104-400W	sRAIT03WT
2015	190388		SBRM E	SEABEAM MONITOR R-01	GDC 14-591N	118-545W	sRAIT03WT
2020	190388		SBRM B	SEABEAM MONITOR R-02	GDC 14-583N	118-551W	sRAIT03WT
1204	230388		SBRM E	SEABEAM MONITOR R-02	GDC 13-296N	119-497W	sRAIT03WT
1209	230388		SBRM B	SEABEAM MONITOR R-03	GDC 13-296N	119-498W	sRAIT03WT
0223	270388		SBRM E	SEABEAM MONITOR R-03	GDC 18-276N	121-481W	sRAIT03WT
0230	270388		SBRM B	SEABEAM MONITOR R-04	GDC 18-288N	121-485W	sRAIT03WT
1854	300388		SBRM E	SEABEAM MONITOR R-04	GDC 26-320N	122-283W	sRAIT03WT
1859	300388		SBRM B	SEABEAM MONITOR R-05	GDC 26-320N	122-294W	sRAIT03WT
2112	020488		SBRM E	SEABEAM MONITOR R-05	GDC 32-130N	117-306W	sRAIT03WT

**** SEA BEAM SWATH BOOKS ****

0137	160388		MBSB B	ARCHIVE SWATH BK. 01	GDC 19-041N	104-402W	sRAIT03WT
2246	160388		MBSB E	ARCHIVE SWATH BK. 01	GDC 20-500N	108-259W	sRAIT03WT
2246	160388		MBSB B	ARCHIVE SWATH BK. 02	GDC 20-500N	108-259W	sRAIT03WT
0548	180388		MBSB E	ARCHIVE SWATH BK. 02	GDC 20-085N	113-460W	sRAIT03WT
0548	180388		MBSB B	ARCHIVE SWATH BK. 03	GDC 20-085N	113-460W	sRAIT03WT
1238	190388		MBSB E	ARCHIVE SWATH BK. 03	GDC 16-123N	117-596W	sRAIT03WT
1238	190388		MBSB B	ARCHIVE SWATH BK. 04	GDC 16-123N	117-596W	sRAIT03WT
1512	200388		MBSB E	ARCHIVE SWATH BK. 04	GDC 13-265N	119-396W	sRAIT03WT
1512	200388		MBSB B	ARCHIVE SWATH BK. 05	GDC 13-265N	119-396W	sRAIT03WT
0111	220388		MBSB E	ARCHIVE SWATH BK. 05	GDC 13-251N	119-344W	sRAIT03WT

#GMT #TIME #	DDMMYY DATE	LOC TIME Z	T	SAMP CODE	SAMPLE IDENTIFIER	DISP CODE	LAT.	LONG.	CRUISE LEG-SHIP
0112	220388			MBSB B	ARCHIVE SWATH BK. 06	GDC	13-251N	119-346W	sRAIT03WT
1055	230388			MBSB E	ARCHIVE SWATH BK. 06	GDC	13-311N	119-495W	sRAIT03WT
1058	230388			MBSB B	ARCHIVE SWATH BK. 07	GDC	13-312N	119-495W	sRAIT03WT
0502	250388			MBSB E	ARCHIVE SWATH BK. 07	GDC	13-341N	119-551W	sRAIT03WT
0502	250388			MBSB B	ARCHIVE SWATH BK. 08	GDC	13-341N	119-551W	sRAIT03WT
1702	260388			MBSB E	ARCHIVE SWATH BK. 08	GDC	16-477N	121-163W	sRAIT03WT
1702	260388			MBSB B	ARCHIVE SWATH BK. 09	GDC	16-477N	121-163W	sRAIT03WT
0303	280388			MBSB E	ARCHIVE SWATH BK. 09	GDC	22-578N	123-160W	sRAIT03WT
0303	280388			MBSB B	ARCHIVE SWATH BK. 10	GDC	22-578N	123-160W	sRAIT03WT
1106	290388			MBSB E	ARCHIVE SWATH BK. 10	GDC	26-031N	123-503W	sRAIT03WT
1106	290388			MBSB B	ARCHIVE SWATH BK. 11	GDC	26-031N	123-503W	sRAIT03WT
727	300388			MBSB E	ARCHIVE SWATH BK. 11	GDC	26-317N	122-093W	sRAIT03WT
1727	300388			MBSB B	ARCHIVE SWATH BK. 12	GDC	26-317N	122-093W	sRAIT03WT
0053	010488			MBSB E	ARCHIVE SWATH BK. 12	GDC	26-470N	122-340W	sRAIT03WT
0053	010488			MBSB B	ARCHIVE SWATH BK. 13	GDC	26-470N	122-340W	sRAIT03WT
1150	020488			MBSB E	ARCHIVE SWATH BK. 13	GDC	30-451N	118-265W	sRAIT03WT
1150	020488			MBSB B	ARCHIVE SWATH BK. 14	GDC	30-451N	118-265W	sRAIT03WT
2047	020488			MBSB E	ARCHIVE SWATH BK. 14	GDC	32-130N	117-306W	sRAIT03WT
**** SEA BEAM SURVEY ****									
0229	190388			MBSV B	DOWD SEAMOUNT SURVEY	GDC	17-378N	116-401W	sRAIT03WT
2341	250388			MBSV E	DOWD SEAMOUNT SURVEY	GDC	13-453N	120-009W	sRAIT03WT

#GMT #TIME #	DDMMYY DATE	LOC TIME	T Z	SAMP CODE	SAMPLE IDENTIFIER	DISP CODE	LAT.	LONG.	CRUISE LEG-SHIP
--------------------	----------------	-------------	--------	--------------	----------------------	--------------	------	-------	--------------------

*** MAGNETIC RECORDS - EARTH TOTAL FIELD ***

1010	170388			MGRA B	MAGNETICS R-01	GDC	21-034N	109-422W	sRAIT03WT
2005	020488			MGRA E	MAGNETICS R-01	GDC	32-120N	117-314W	sRAIT03WT

*** THERMOGRAPH RECORDINGS ***

2345	150388	-		TGRC B	THERMOGRAPHS 1-14	GDC	19-038N	104-205W	sRAIT03WT
2330	020488			TGRC E	THERMOGRAPHS 1-14	GDC	32-130N	117-306W	sRAIT03WT

*** EXPENDABLE BATHYTHERMOGRAPHS ***

0000	160388			BTXP B	BATHYTHERMOGRAPHS	GDC	19-032N	104-235W	sRAIT03WT
2000	020488			BTXP E	BATHYTHERMOGRAPHS	GDC	32-111N	117-320W	sRAIT03WT

*** CONTINUOUS GRAVIMETER ***

2330	150388			GVSV B	GRAVITY METER	GDC	19-034N	104-201W	sRAIT03WT
0000	030488			GVSV E	GRAVITY METER	GDC	32-130N	117-306W	sRAIT03WT

*** ROCK DREDGES ***

1315	220388			DRRO B	ROCK DREDGE 125 961M	GCR	13-253N	119-527W	sRAIT03WT
1411	220388			DRRO E	ROCK DREDGE 125 829M	GCR	13-261N	119-530W	sRAIT03WT

*** CURRENT METER STATIONS ***

1625	200388			CMAB B	STA. 101DS	545M	MLR	13-269N	119-522W	sRAIT03WT
2000	250388			CMAB E	STA. 101DS		MLR	13-262N	119-529W	sRAIT03WT
1710	200388			CMAB B	STA. 102DS	574M	MLR	13-299N	119-495W	sRAIT03WT
2026	250388			CMAB E	STA. 102DS	494M	MLR	13-274N	119-520W	sRAIT03WT
1750	200388			CMAB B	STA. 103DS	548M	MLR	13-266N	119-497W	sRAIT03WT
2057	250388			CMAB E	STA. 103DS		MLR	13-296N	119-503W	sRAIT03WT

#GMT #TIME #	DDMMYY DATE	LOC TIME	T Z	SAMP CODE	SAMPLE IDENTIFIER	DISP CODE	LAT.	LONG.	CRUISE LEG-SHIP
--------------------	----------------	-------------	--------	--------------	----------------------	--------------	------	-------	--------------------

*** FREE VEHICLE TRAP STATIONS ***

1625	200388			TRFV B	STA. 101DS	553M	MBD 13-269N	119-522W	sRAIT03WT
2000	250388			TRFV E	STA. 101DS		MBD 13-262N	119-529W	sRAIT03WT
1710	200388			TRFV B	STA. 102DS	582M	MBD 13-299N	119-495W	sRAIT03WT
2026	250388			TRFV E	STA. 102DS		MBD 13-274N	119-520W	sRAIT03WT
1750	200388			TRFV B	STA. 103DS	556M	MBD 13-266N	119-497W	sRAIT03WT
2057	250388			TRFV E	STA. 103DS		MBD 13-296N	119-503W	sRAIT03WT

*** OPEN NET STATIONS ***

1828	200388			ON1M B	1M OBLIQ. STA01	300M	MLR 13-272N	119-528W	sRAIT03WT
1854	200388			ON1M E	1M OBLIQ. STA01	300M	MLR 13-277N	119-523W	sRAIT03WT
1900	200388			ON1M B	1M OBLIQ. STA02	710M	MLR 13-278N	119-522W	sRAIT03WT
1900	200388			ON1M E	1M OBLIQ. STA02	710M	MLR 13-290N	119-513W	sRAIT03WT
2000	200388			ON1M B	1M OBLIQ. STA03	300M	MLR 13-290N	119-513W	sRAIT03WT
2021	200388			ON1M E	1M OBLIQ. STA03	300M	MLR 13-294N	119-513W	sRAIT03WT
2030	200388			ON1M B	1M OBLIQ. STA04	710M	MLR 13-295N	119-513W	sRAIT03WT
2129	200388			ON1M E	1M OBLIQ. STA04	710M	MLR 13-313N	119-521W	sRAIT03WT
1725	210388			ON1M B	1M OBLIQ. STA05	300M	MLR 13-531N	119-301W	sRAIT03WT
1746	210388			ON1M E	1M OBLIQ. STA05	300M	MLR 13-536N	119-299W	sRAIT03WT
1752	210388			ON1M B	1M OBLIQ. STA06	710M	MLR 13-537N	119-298W	sRAIT03WT
1842	210388			ON1M E	1M OBLIQ. STA06	710M	MLR 13-548N	119-292W	sRAIT03WT
1850	210388			ON1M B	1M OBLIQ. STA07	710M	MLR 13-550N	119-292W	sRAIT03WT
1939	210388			ON1M E	1M OBLIQ. STA07	710M	MLR 13-560N	119-286W	sRAIT03WT
1947	210388			ON1M B	1M OBLIQ. STA08	300M	MLR 13-562N	119-286W	sRAIT03WT
2008	210388			ON1M E	1M OBLIQ. STA08	300M	MLR 13-565N	119-283W	sRAIT03WT

#GMT #TIME #	DDMMYY DATE	LOC TIME	T Z	SAMP CODE	SAMPLE IDENTIFIER	DISP CODE	LAT.	LONG.	CRUISE LEG-SHIP
0716 0806	230388 230388			ON1M ON1M	B 1M OBLIQ. STA09 710M E 1M OBLIQ. STA09 710M	MLR MLR	13-262N 13-272N	119-511W 119-505W	sRAIT03WT sRAIT03WT
0812 0910	230388 230388			ON1M ON1M	B 1M OBLIQ. STA10 710M E 1M OBLIQ. STA10 710M	MLR MLR	13-273N 13-286N	119-506W 119-502W	sRAIT03WT sRAIT03WT
0915 0942	230388 230388			ON1M ON1M	B 1M OBLIQ. STA11 300M E 1M OBLIQ. STA11 300M	MLR MLR	13-287N 13-293N	119-501W 119-501W	sRAIT03WT sRAIT03WT
0947 1002	230388 230388			ON1M ON1M	B 1M OBLIQ. STA12 300M E 1M OBLIQ. STA12 300M	MLR MLR	13-295N 13-298N	119-501W 119-499W	sRAIT03WT sRAIT03WT
1008 1029	230388 230388			ON1M ON1M	B 1M OBLIQ. STA13 300M E 1M OBLIQ. STA13 300M	MLR MLR	13-299N 13-303N	119-499W 119-498W	sRAIT03WT sRAIT03WT
1035 1125	230388 230388			ON1M ON1M	B 1M OBLIQ. STA14 710M E 1M OBLIQ. STA14 710M	MLR MLR	13-305N 13-320N	119-497W 119-492W	sRAIT03WT sRAIT03WT
0823 0845	250388 250388			ON1M ON1M	B 1M OBLIQ. STA15 300M E 1M OBLIQ. STA15 300M	MLR MLR	13-334N 13-337N	119-395W 119-393W	sRAIT03WT sRAIT03WT
0849 0939	250388 250388			ON1M ON1M	B 1M OBLIQ. STA16 710M E 1M OBLIQ. STA16 710M	MLR MLR	13-338N 13-345N	119-393W 119-388W	sRAIT03WT sRAIT03WT
0946 1008	250388 250388			ON1M ON1M	B 1M OBLIQ. STA17 300M E 1M OBLIQ. STA17 300M	MLR MLR	13-346N 13-351N	119-387W 119-387W	sRAIT03WT sRAIT03WT
1012 1033	250388 250388			ON1M ON1M	B 1M OBLIQ. STA18 300M E 1M OBLIQ. STA18 300M	MLR MLR	13-352N 13-356N	119-387W 119-387W	sRAIT03WT sRAIT03WT
1040 1130	250388 250388			ON1M ON1M	B 1M OBLIQ. STA19 710M E 1M OBLIQ. STA19 710M	MLR MLR	13-358N 13-369N	119-387W 119-386W	sRAIT03WT sRAIT03WT
1136 1229	250388 250388			ON1M ON1M	B 1M OBLIQ. STA20 710M E 1M OBLIQ. STA20 710M	MLR MLR	13-370N 13-380N	119-386W 119-384W	sRAIT03WT sRAIT03WT

#GMT	DDMMYY	LOC	T	SAMP	SAMPLE	DISP			CRUISE
#TIME	DATE	TIME	Z	CODE	IDENTIFIER	CODE	LAT.	LONG.	LEG-SHIP

*** CAMERA STATIONS ***

0555	220388			CATB	B STA. 104DS	551-557M	MBD	13-278N	119-515W	sRAIT03WT
0900	220388			CATB	E STA. 104DS	551-557M	MBD	13-281N	119-509W	sRAIT03WT
1220	230388			CATB	B STA. 105DS	567-725M	MBD	13-297N	119-499W	sRAIT03WT
1510	230388			CATB	E STA. 105DS	567-725M	MBD	13-308N	119-511W	sRAIT03WT

*** ISACC-KIDD MIDWATER NET TRAWL ***

1710	240388			IKMT	B MIDWATER TRAWL	420M	MBD	13-271N	119-521W	sRAIT03WT
2007	240388			IKMT	E MIDWATER TRAWL	420M	MBD	13-303N	119-475W	sRAIT03WT

*** HYDROCASTS ***

0325	230388			HCNA	SO	G 12 1006M	MLR	13-170N	120-008W	sRAIT03WT
150	240388			HCNA	SO	G 12 1005M	MLR	13-242N	119-553W	sRAIT03WT
0342	240388			HCNA	SO	G 12 505M	MLR	13-279N	119-508W	sRAIT03WT
2110	240388			HCNA	SO	G 12 506M	MLR	13-296N	119-497W	sRAIT03WT
2255	240388			HCNA	SO	G 12 1006M	MLR	13-328N	119-476W	sRAIT03WT
0105	250388			HCNA	SO	G 12 1005M	MLR	13-383N	119-416W	sRAIT03WT

*** END SAMPLE INDEX