

*Report and Index of
Underway Marine Geophysical Data*

Krusenstern Expedition

Leg 06

(KRUS06RR)

R/V Roger Revelle

(Issued Jan 2005)

Ports:

Honolulu, Hawaii (10-Oct-04)
to
San Diego, California (22-Oct-04)

Chief Scientist: Peter Lonsdale
Scripps Institution of Oceanography
plonsdale@ucsd.edu

Computer Tech - Barry Quiel
Resident Tech - Cambria Colt

Post-Cruise processing and report preparation by the
Shipboard Technical Support Group,
Scripps Institution of Oceanography
La Jolla, CA 92093-0223

Note: *This is an index of underway geophysical data edited and processed after the completion of the leg and is intended primarily for informal use within the institution. This document is not to be reproduced or distributed outside Scripps without prior approval of the chief scientist or Shipboard Technical Support, Scripps Institution of Oceanography, La Jolla, California 92093-0223*

STS Cruise ID#302

Report and index of Navigation and Underway Geophysical Data

Contents:

Index Chart - give track of cruise leg, dates, ports.

Track Charts - annotated with dates and hour ticks.

Profiles - depth, magnetic and gravity free air anomaly vs. distance.

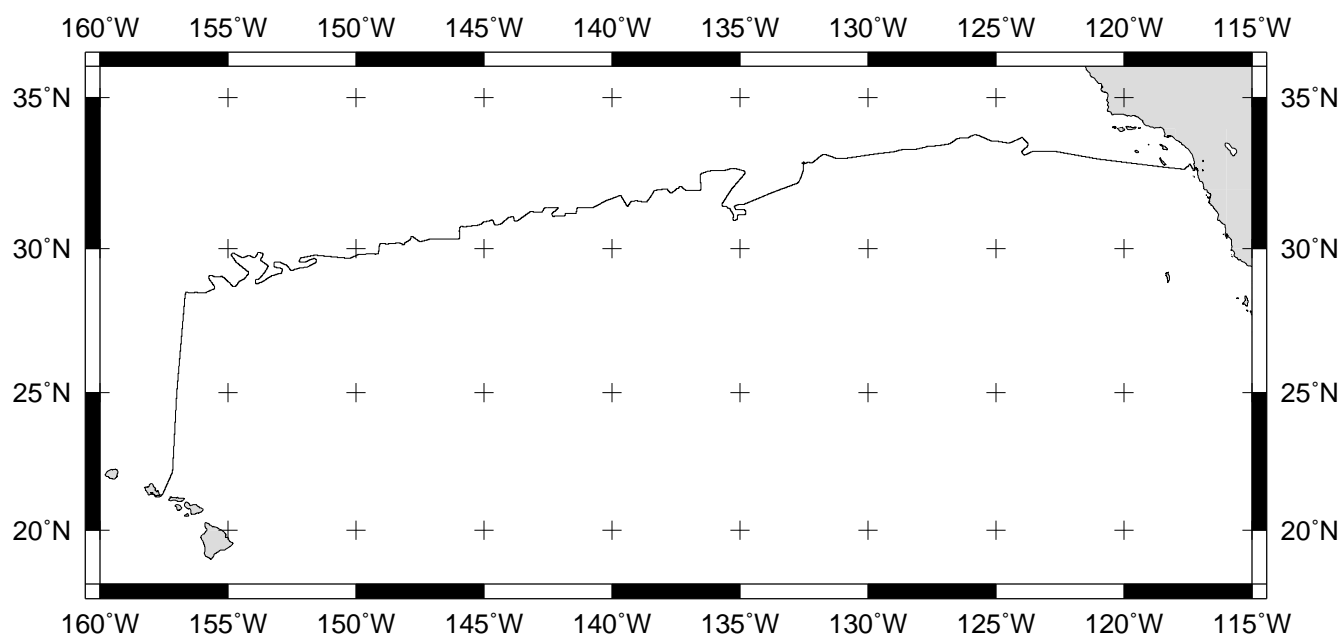
Sample Index - list of begin/end times and positions of all underway records as well as samples and measurements from other disciplines collected on the leg.

Note:

For information on the availability of this current digital data as well as archived digital data contact:

Stephen P. Miller
Geological Data Center
Scripps Institution of Oceanography
La Jolla, California 92093-0220
Phone: (858) 534-1898
Internet email: spmiller@ucsd.edu; or his website: <http://SIOExplorer@ucsd.edu>

Rev 05/2002



KRUSENSTERN EXPEDITION LEG 6 (KRUS06RR)

=====

CHIEF SCIENTIST: Peter Lonsdale, Scripps Institution of Oceanography

PORTS: Honolulu, Hawaii - San Diego, California

DATES: 10 - 22 October 2004

SHIP: R/V Revelle

TOTAL MILEAGE OF UNDERWAY DATA COLLECTED

Cruise-3443 miles

Magnetics-2881 miles

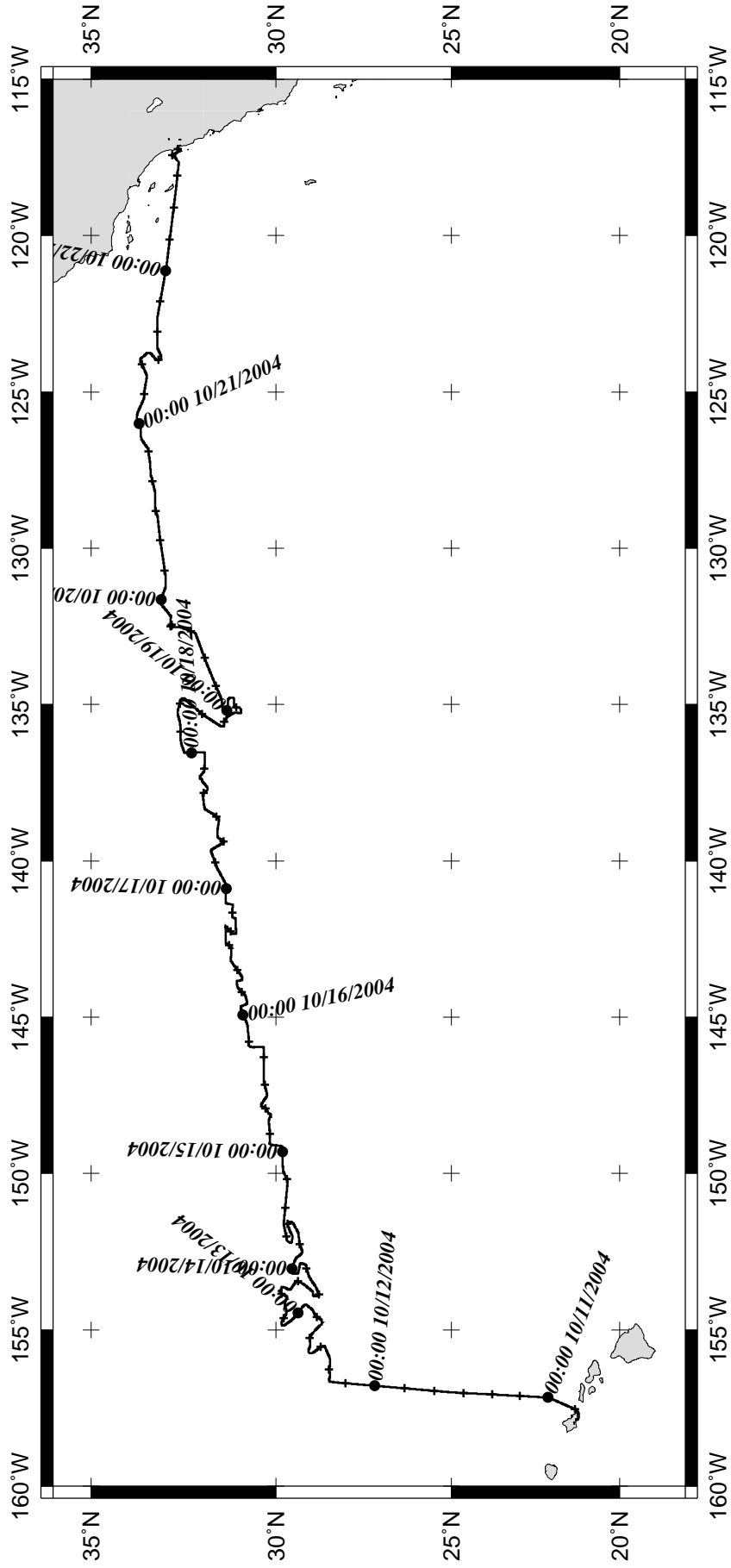
Bathymetry-3417 miles

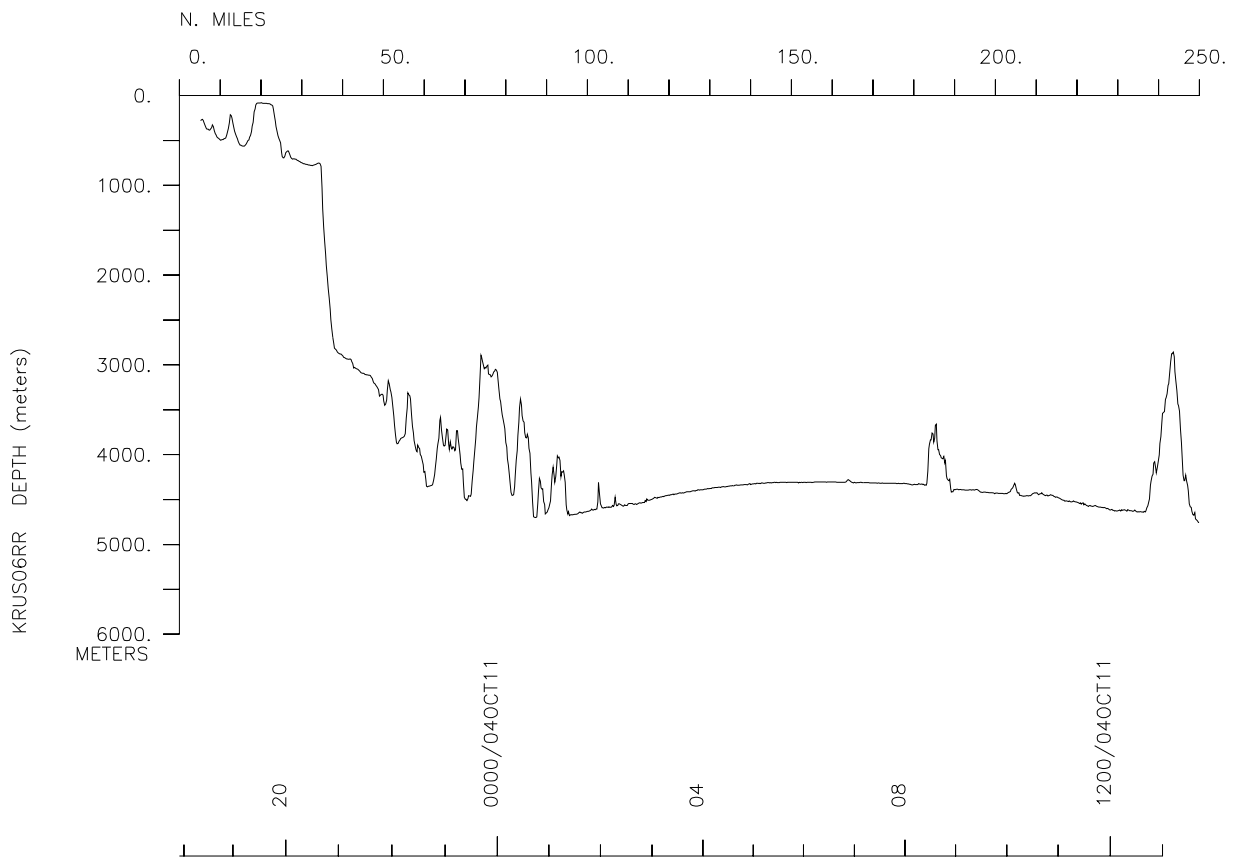
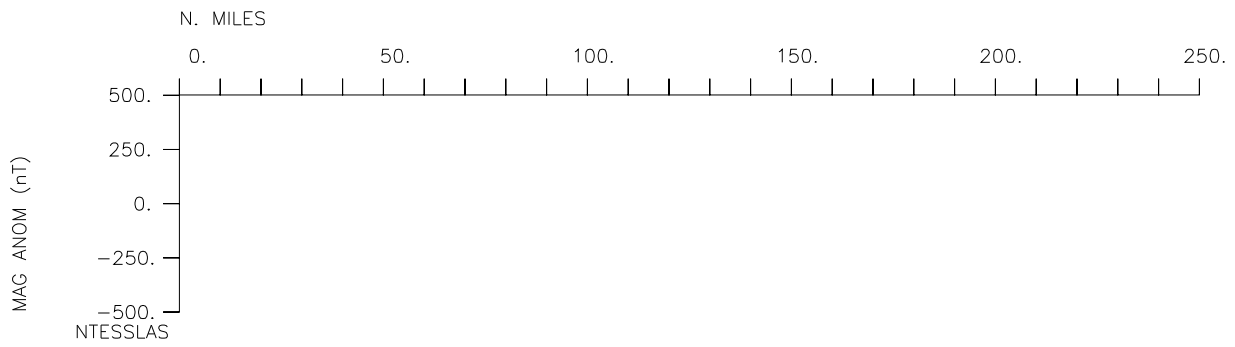
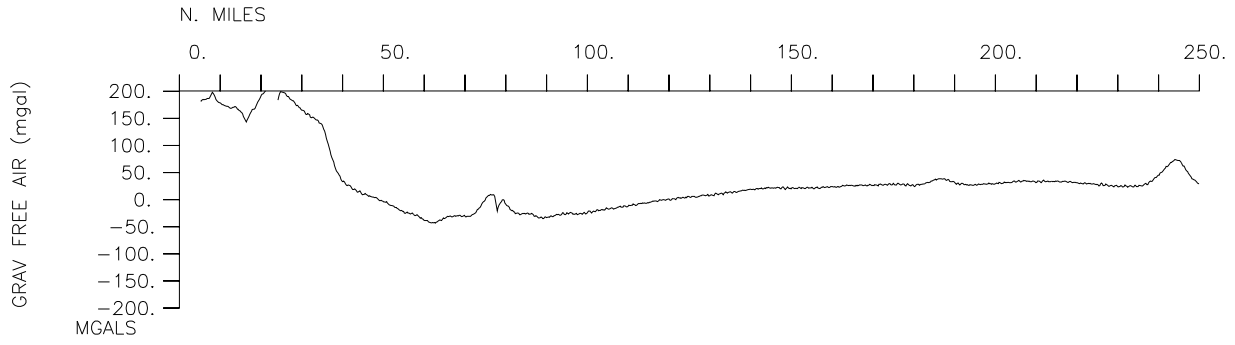
Seismic Reflection-none collected

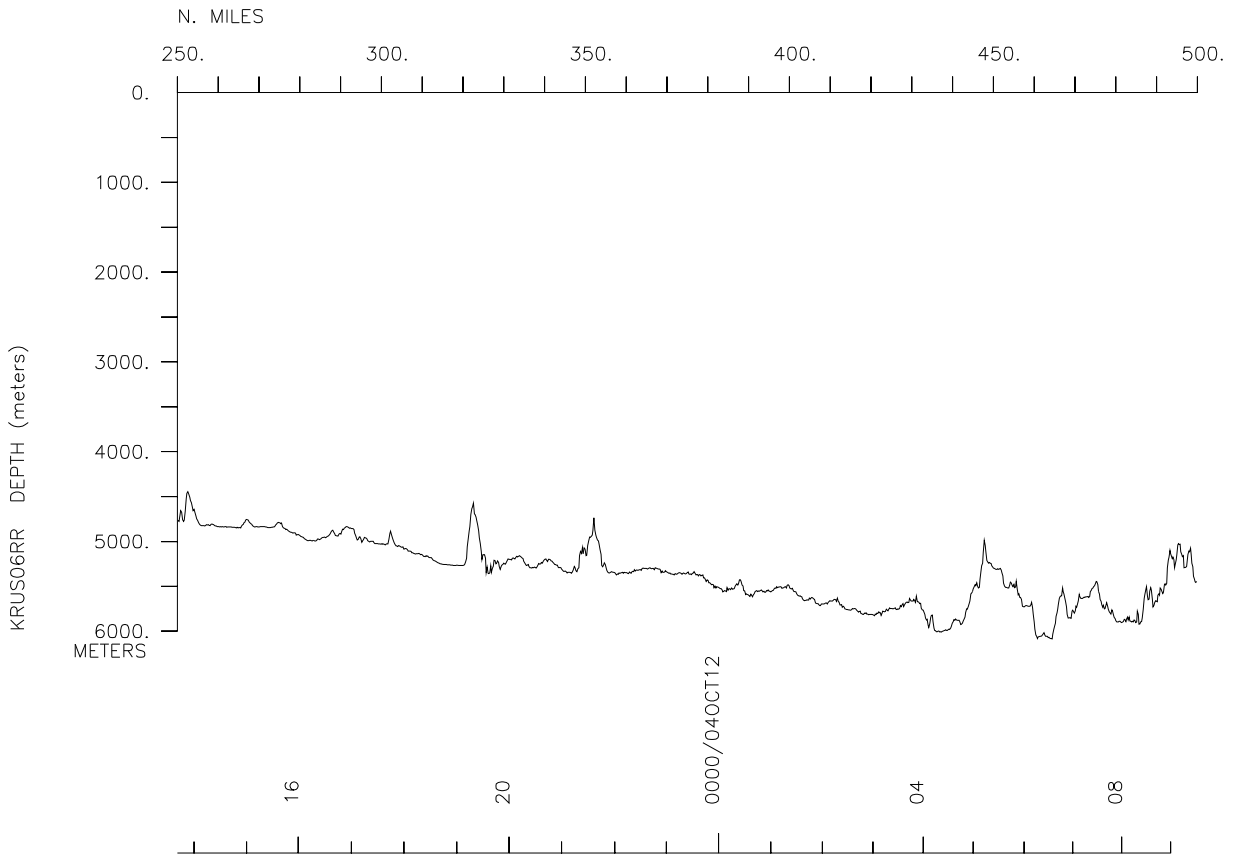
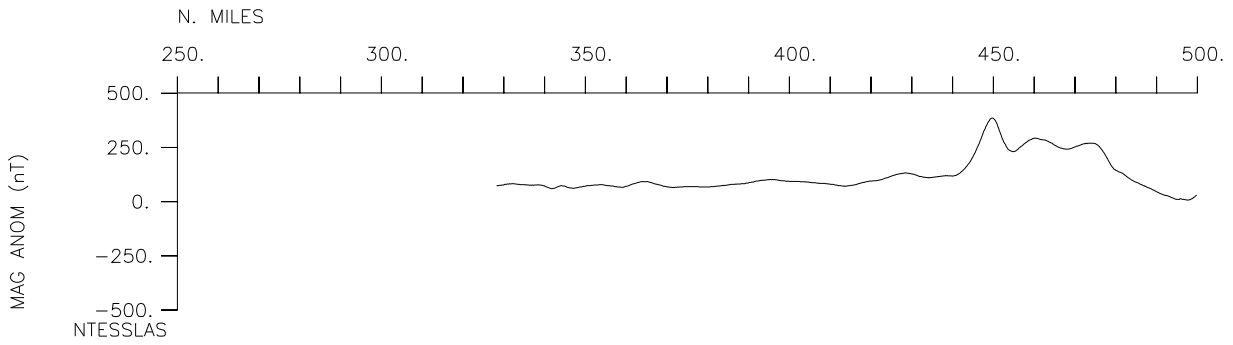
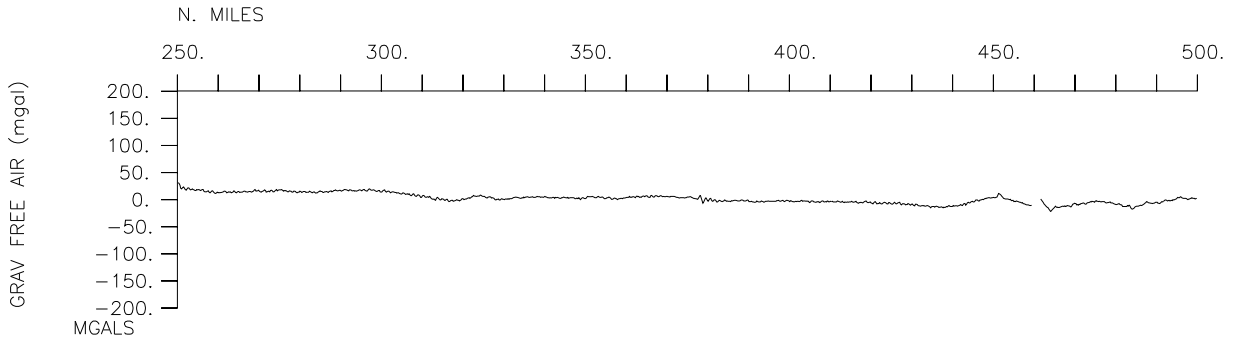
Multibeam-3417 miles

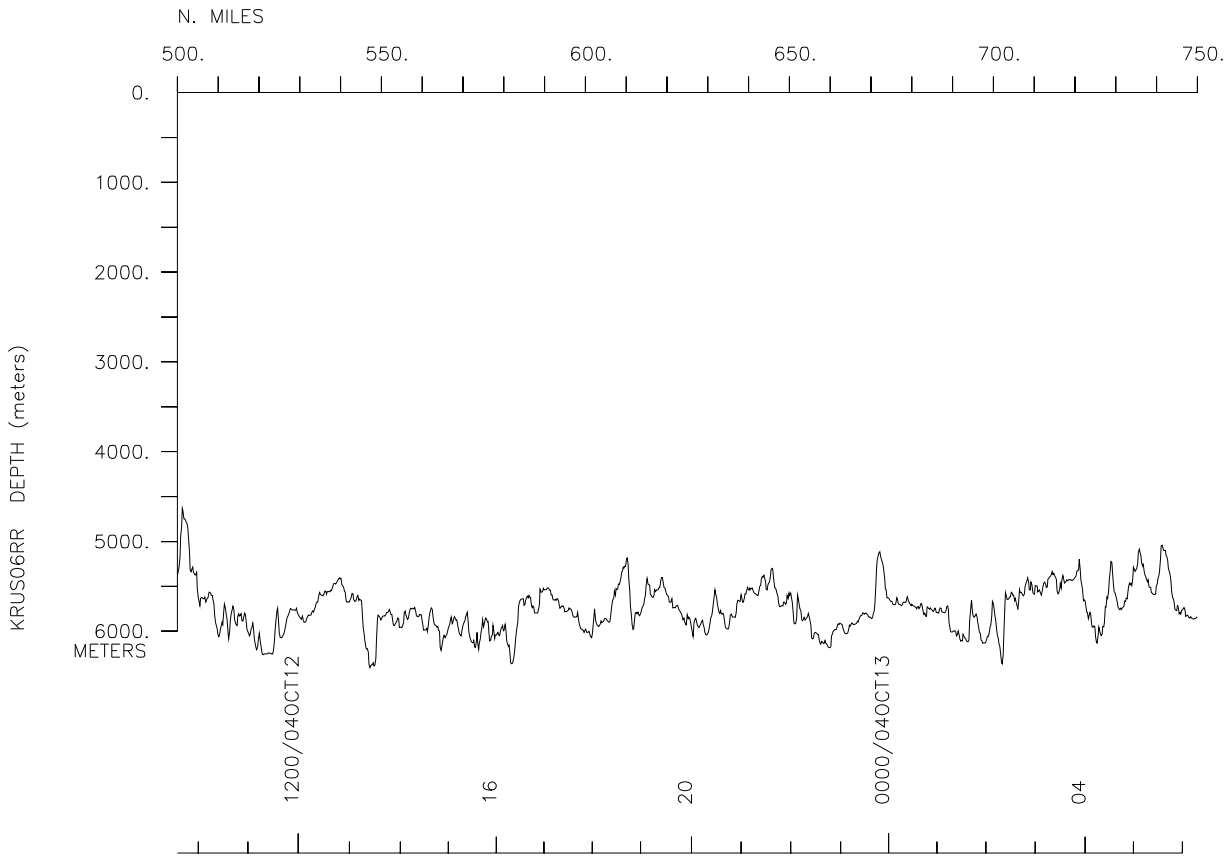
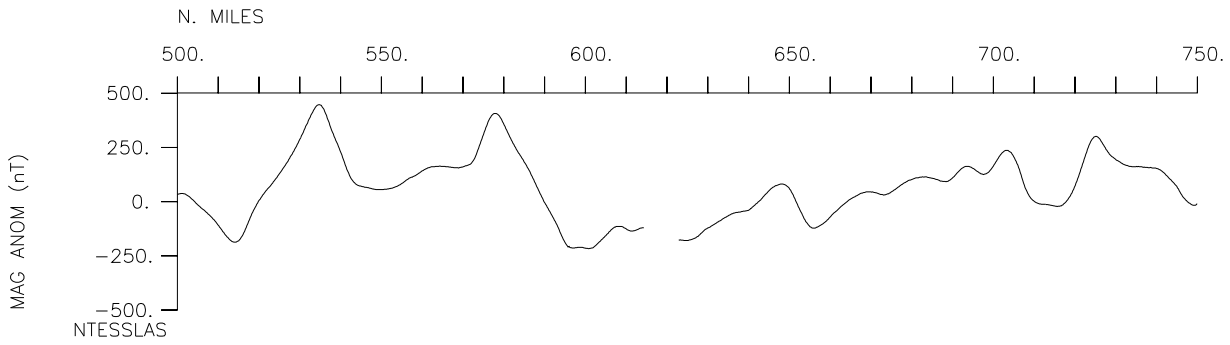
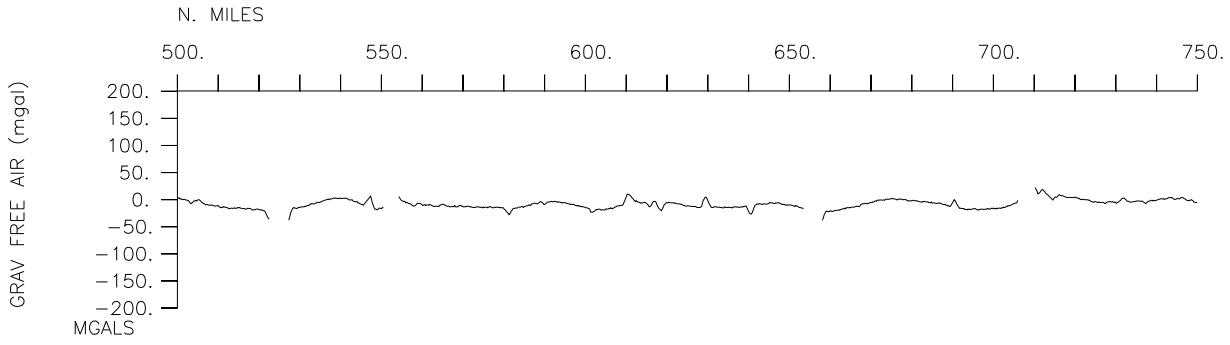
Gravity-3439 miles

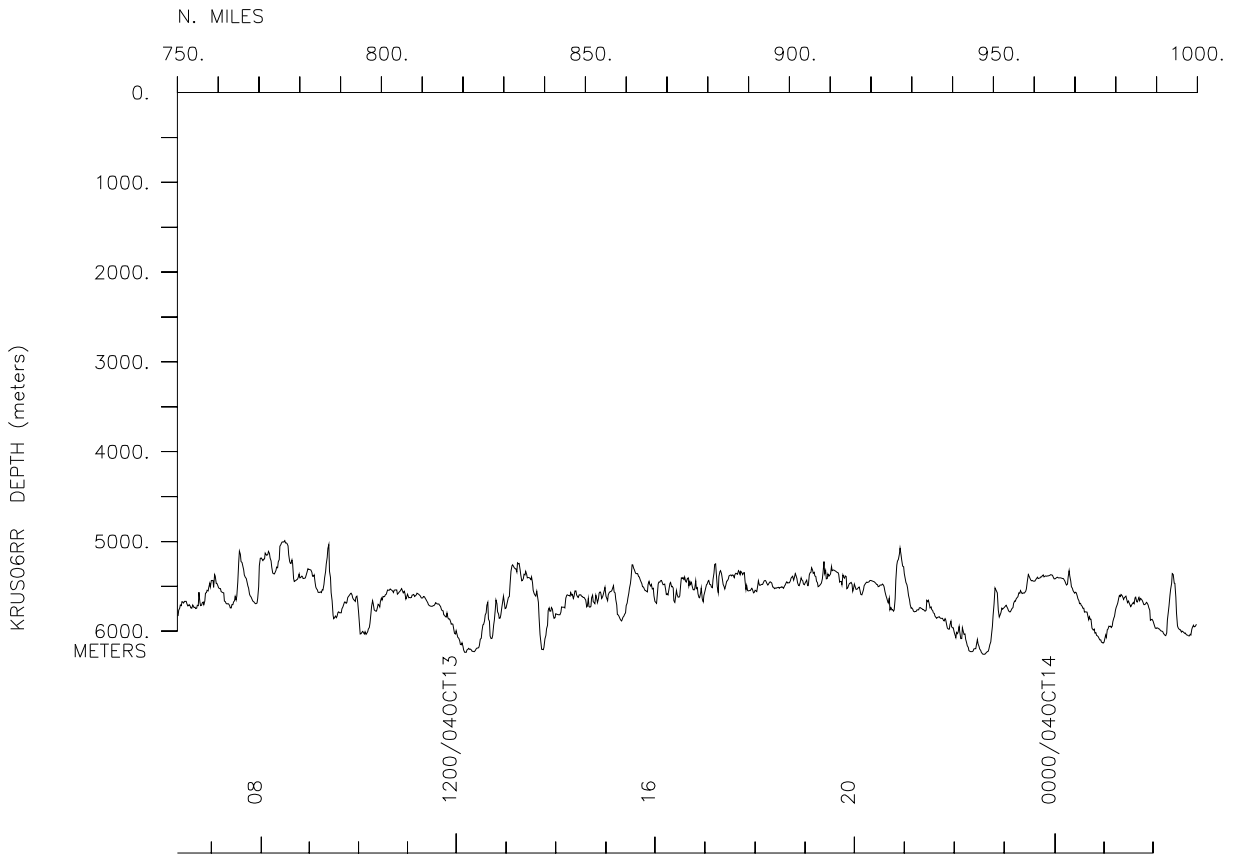
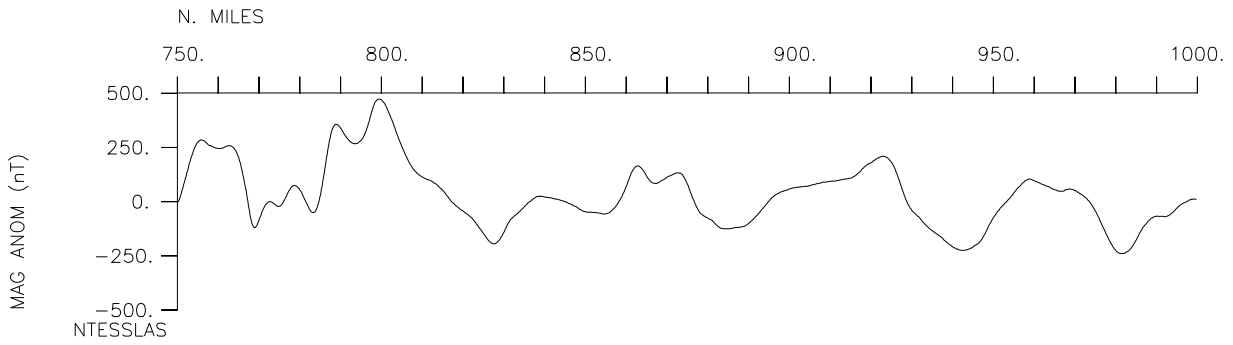
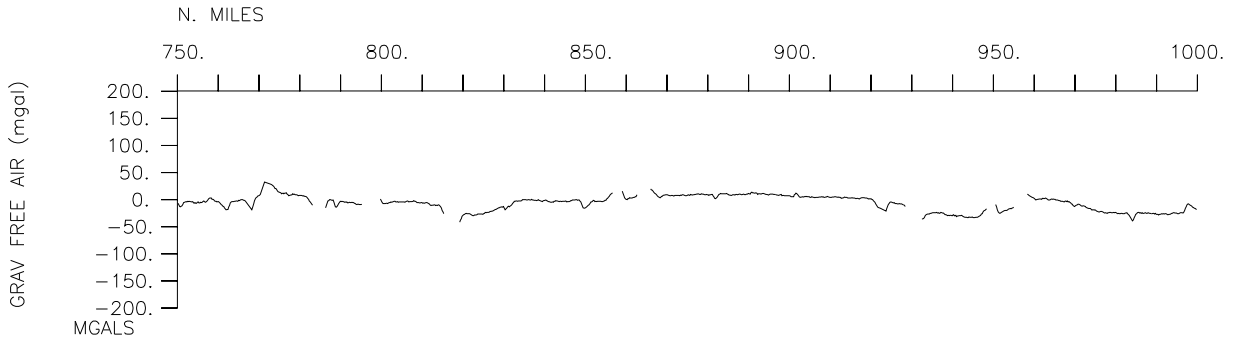
KRUS06RR

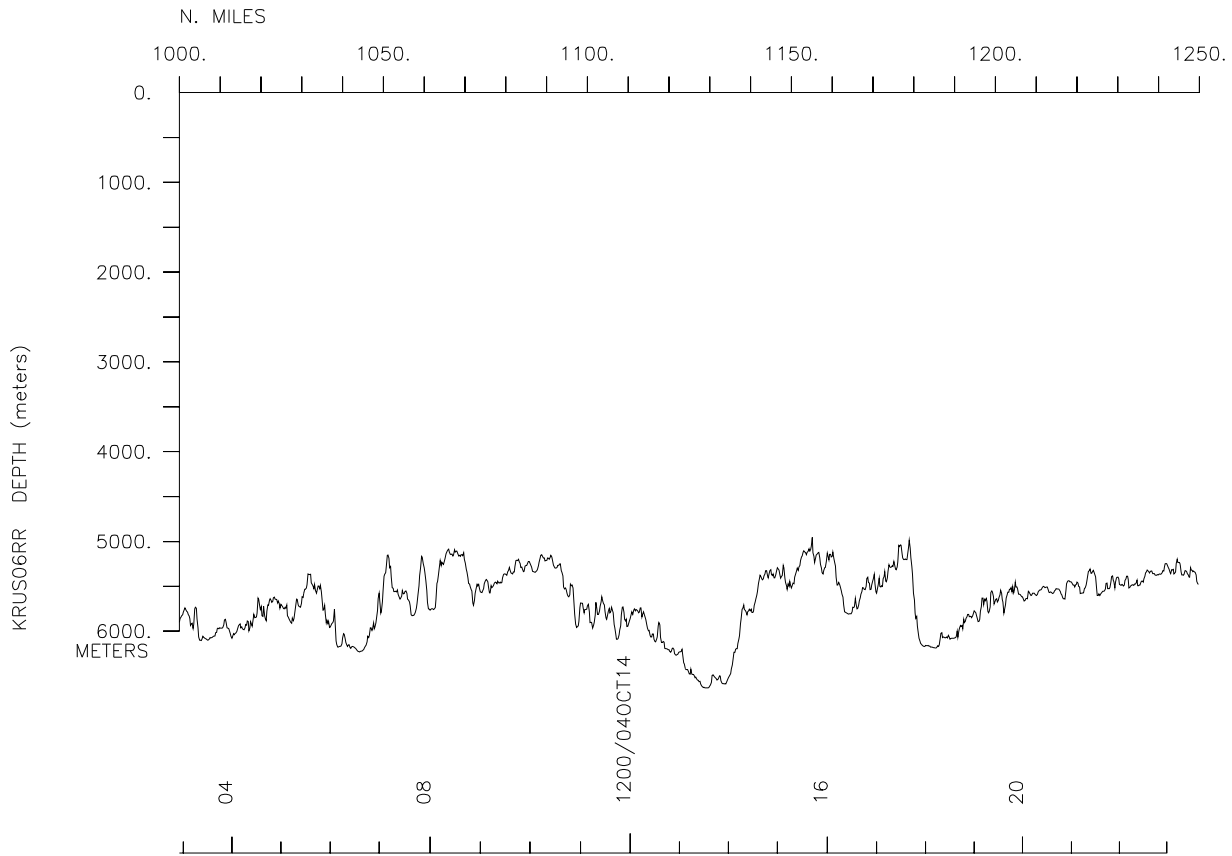
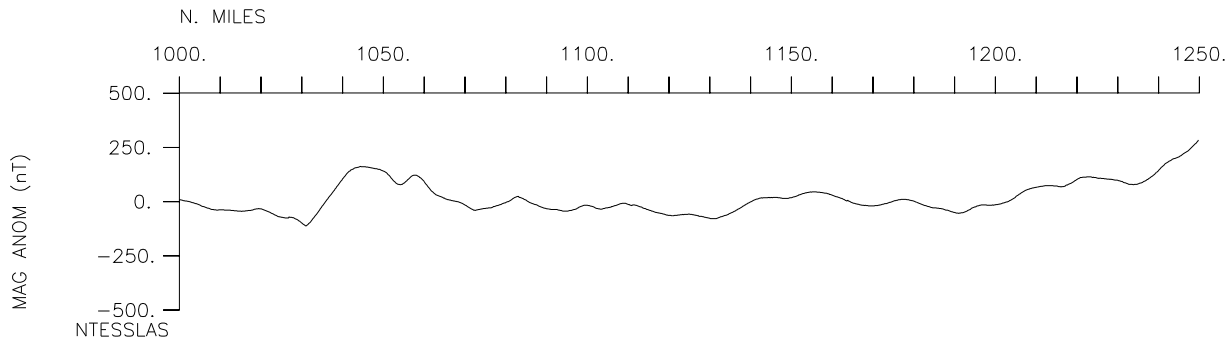
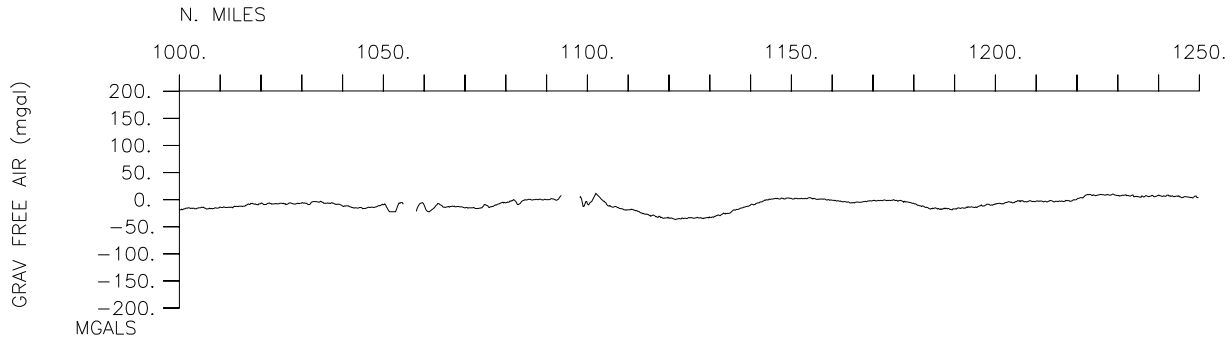


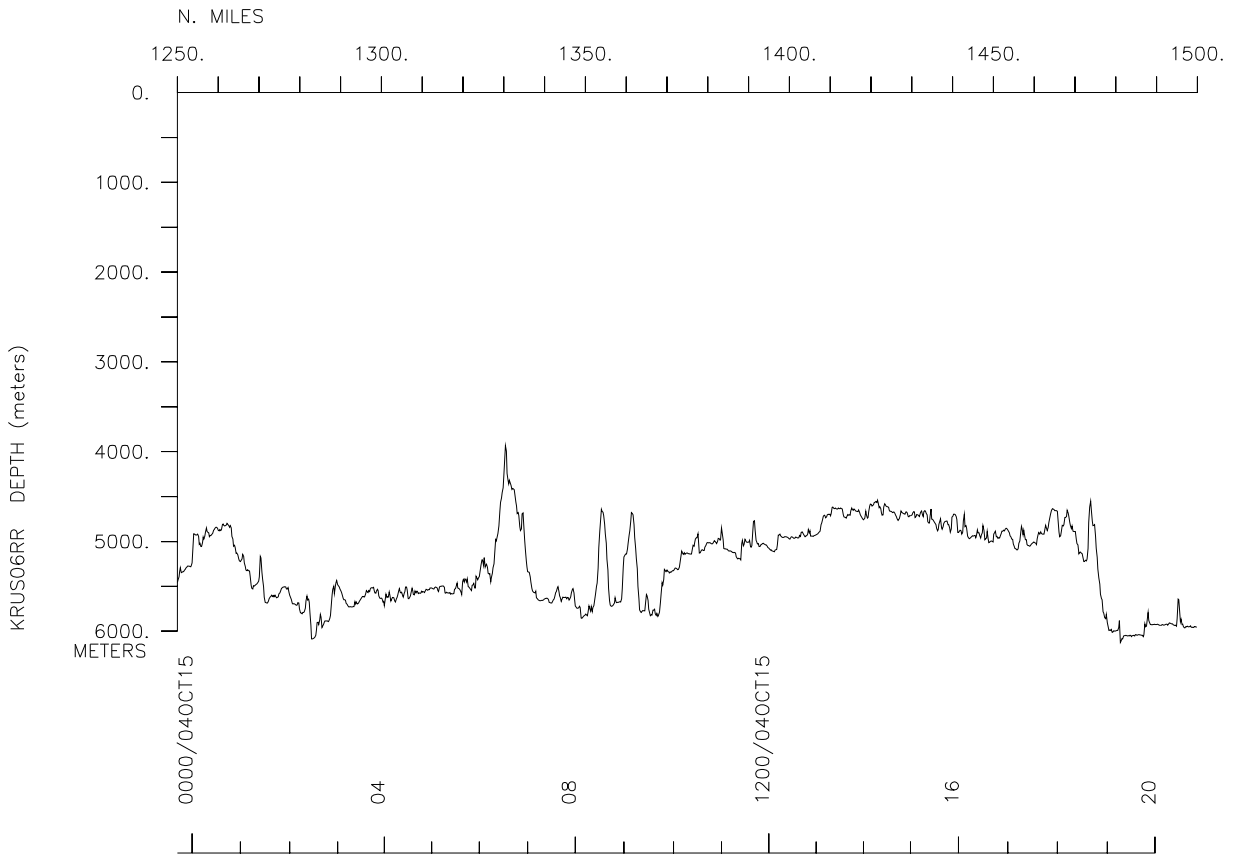
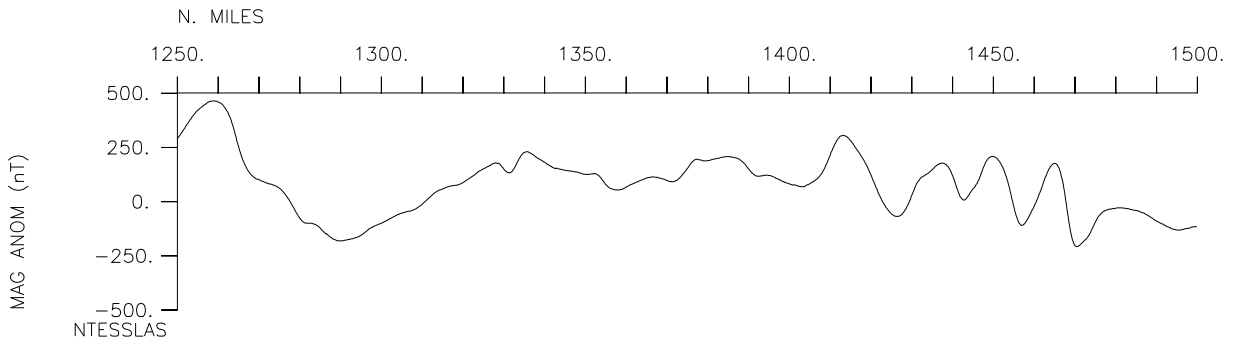
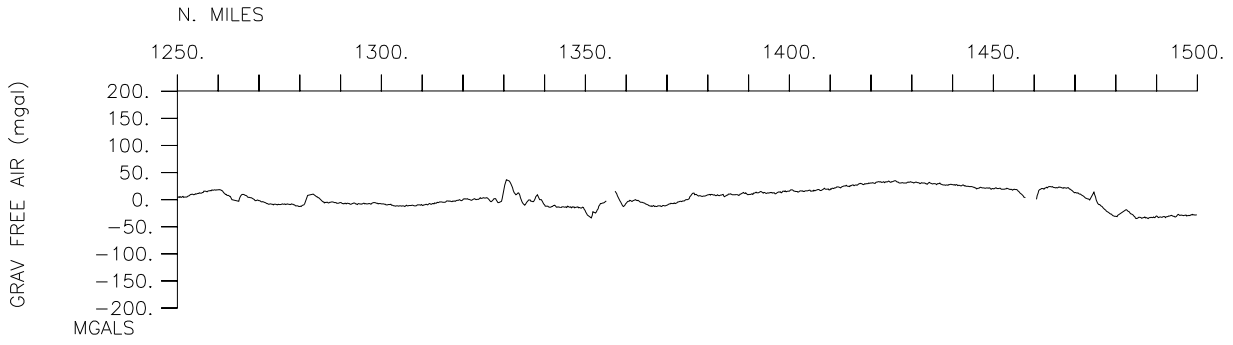


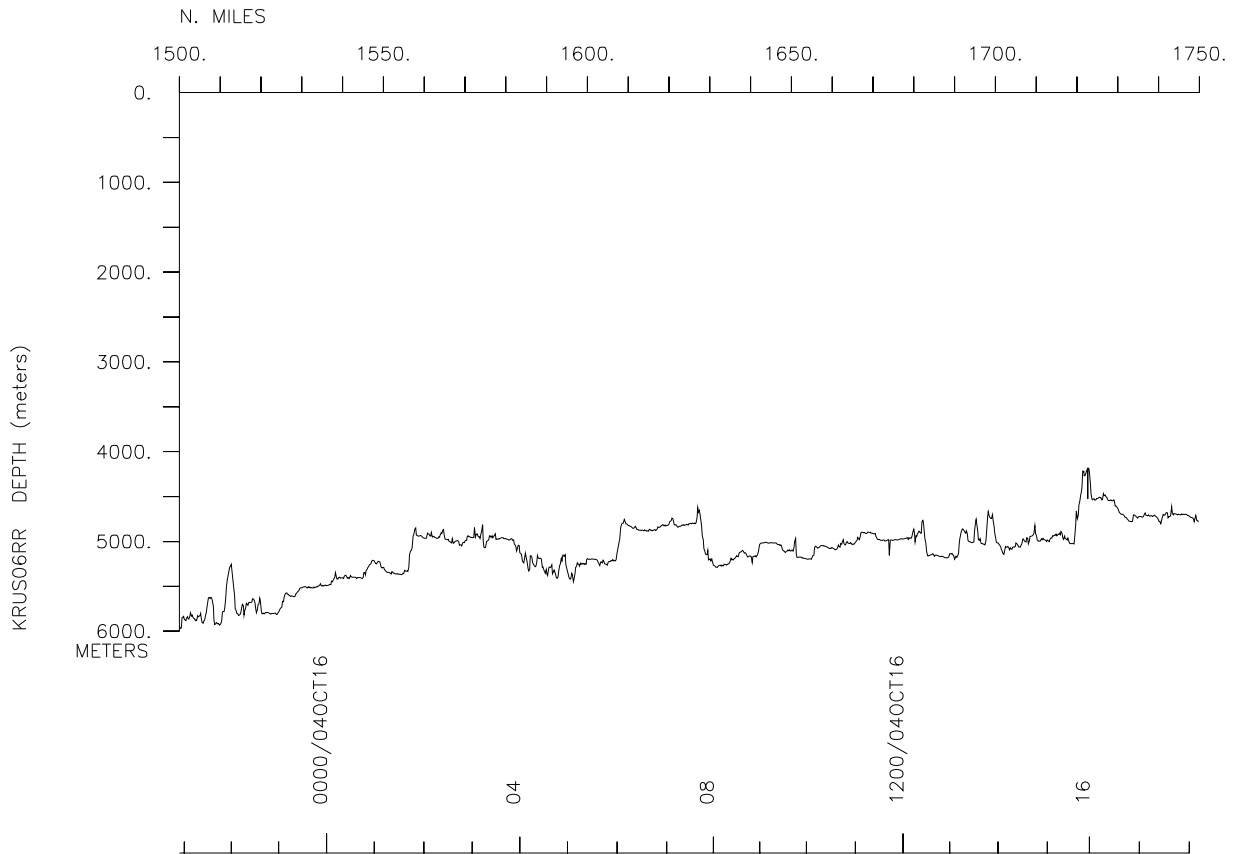
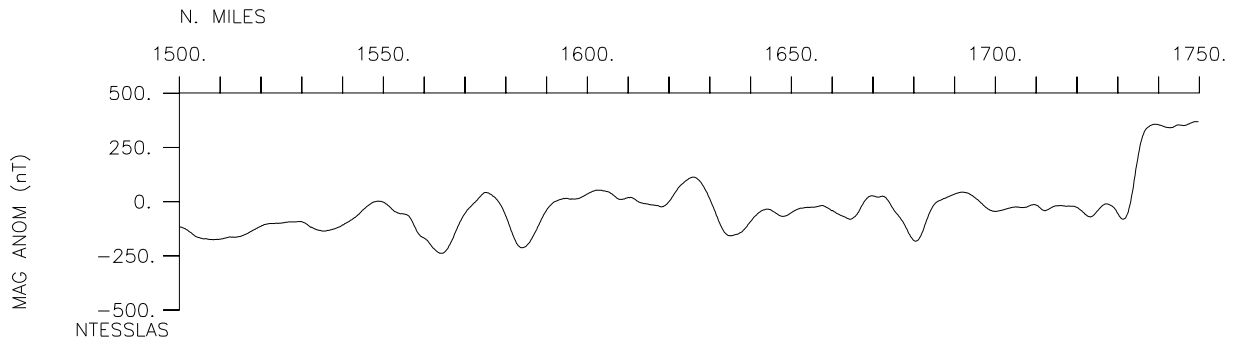
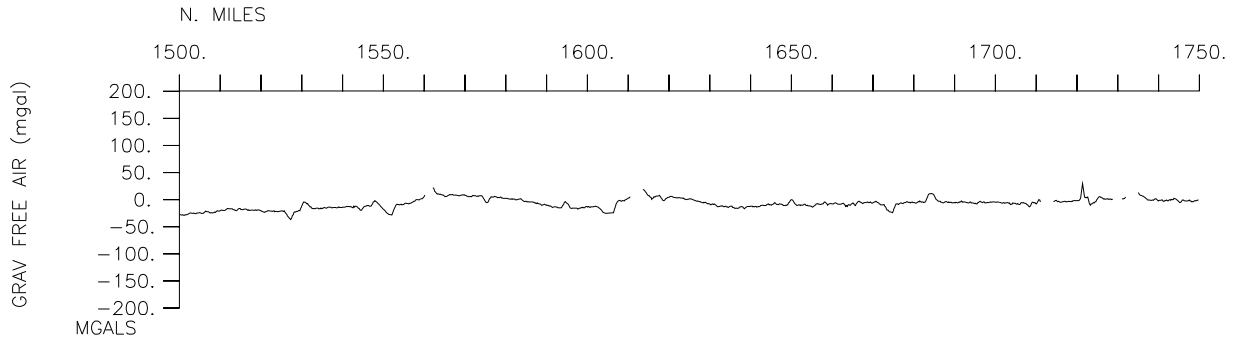


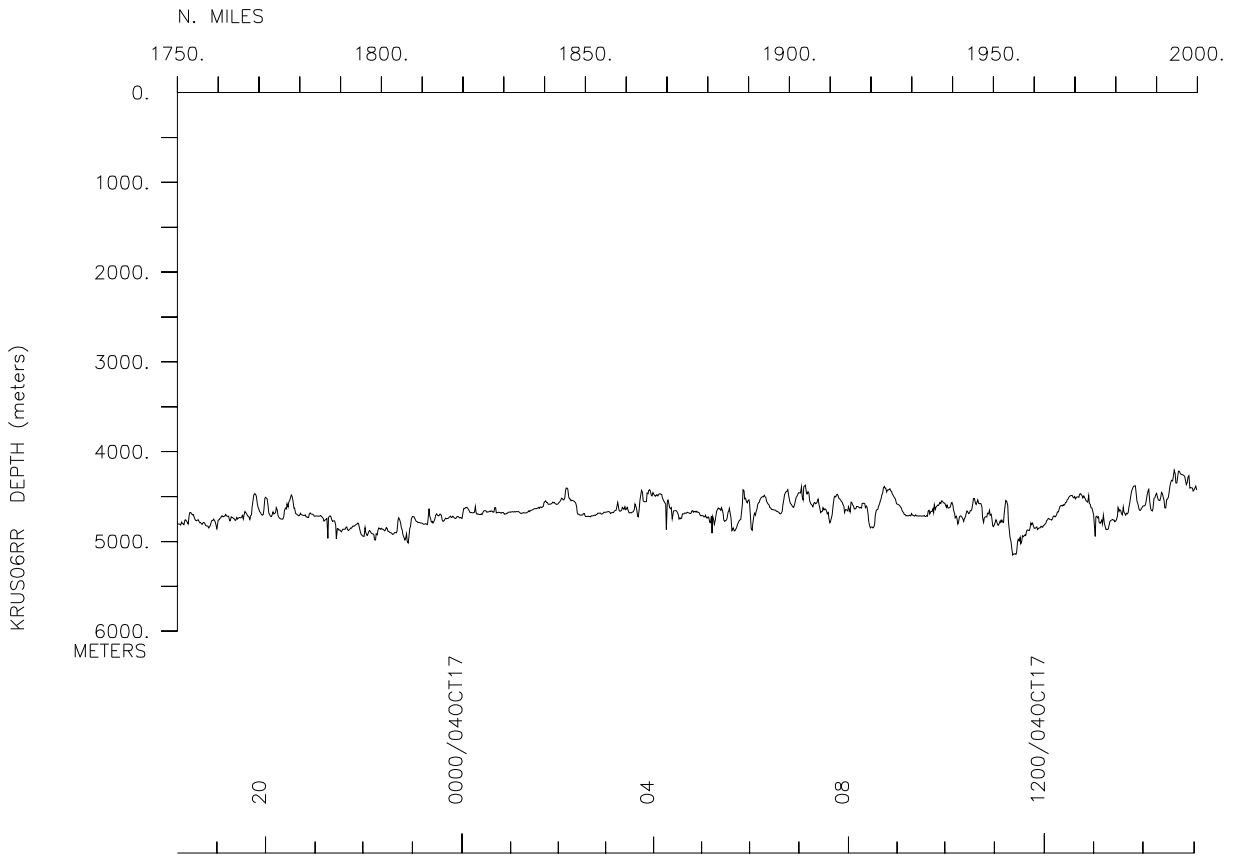
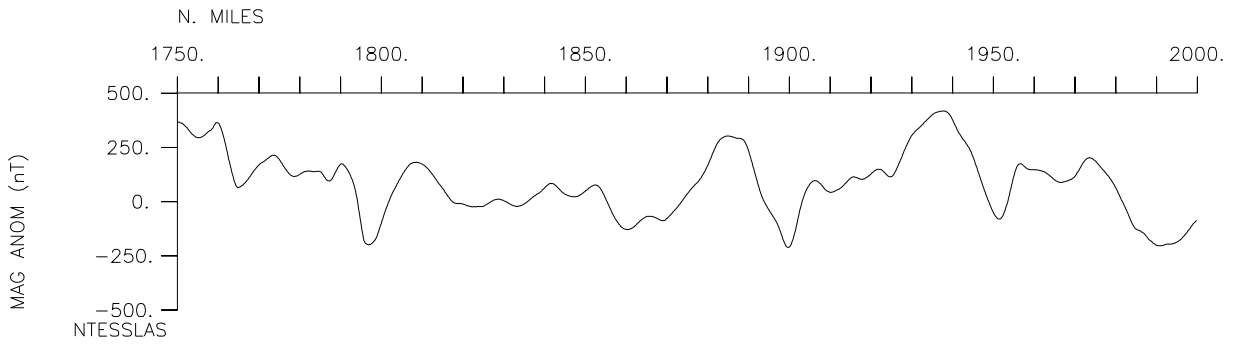
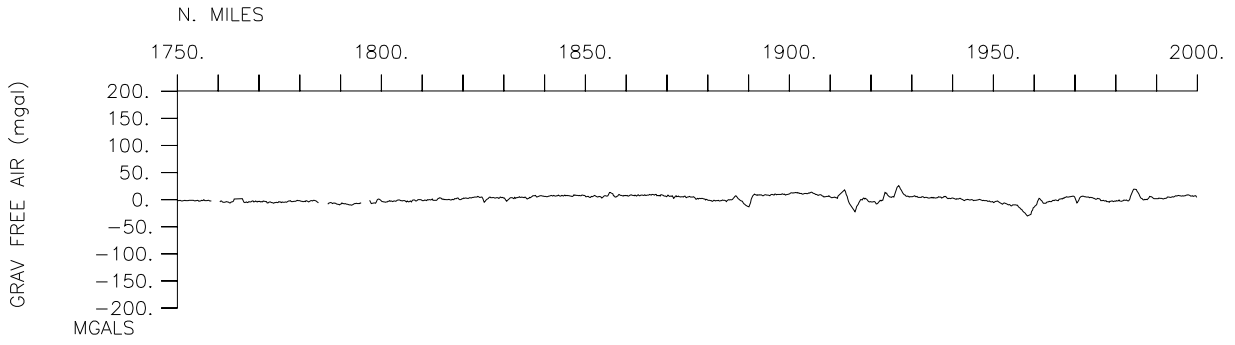


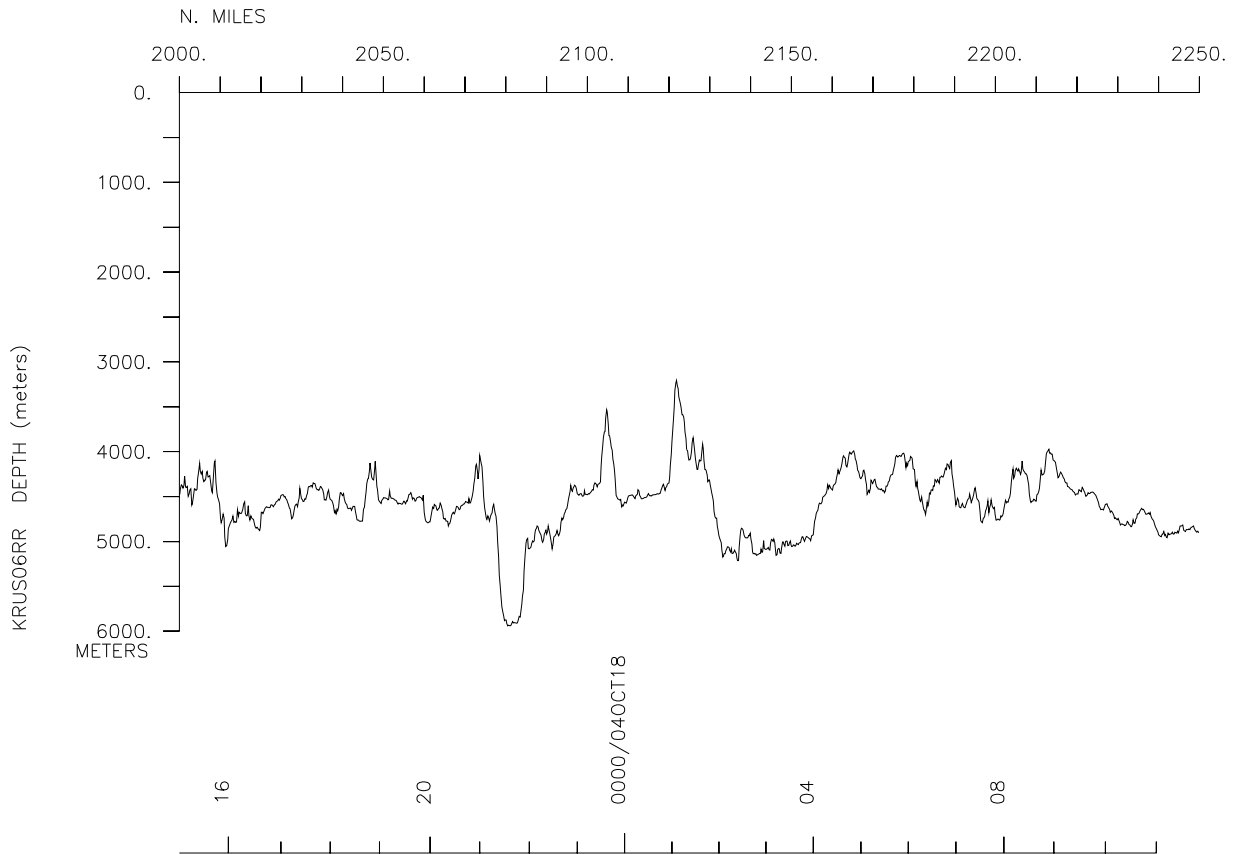
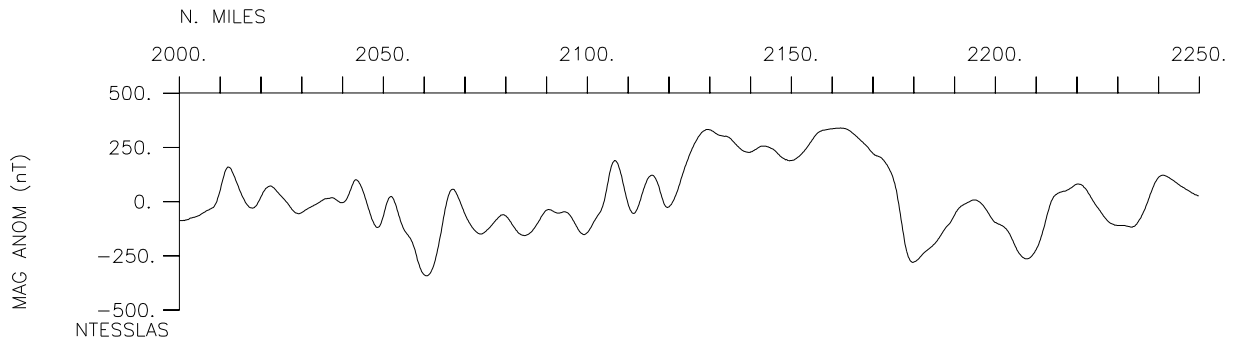
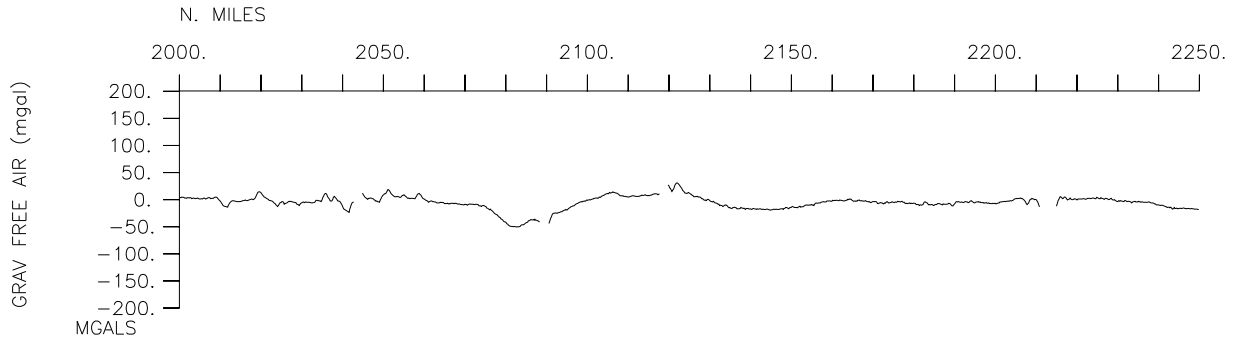


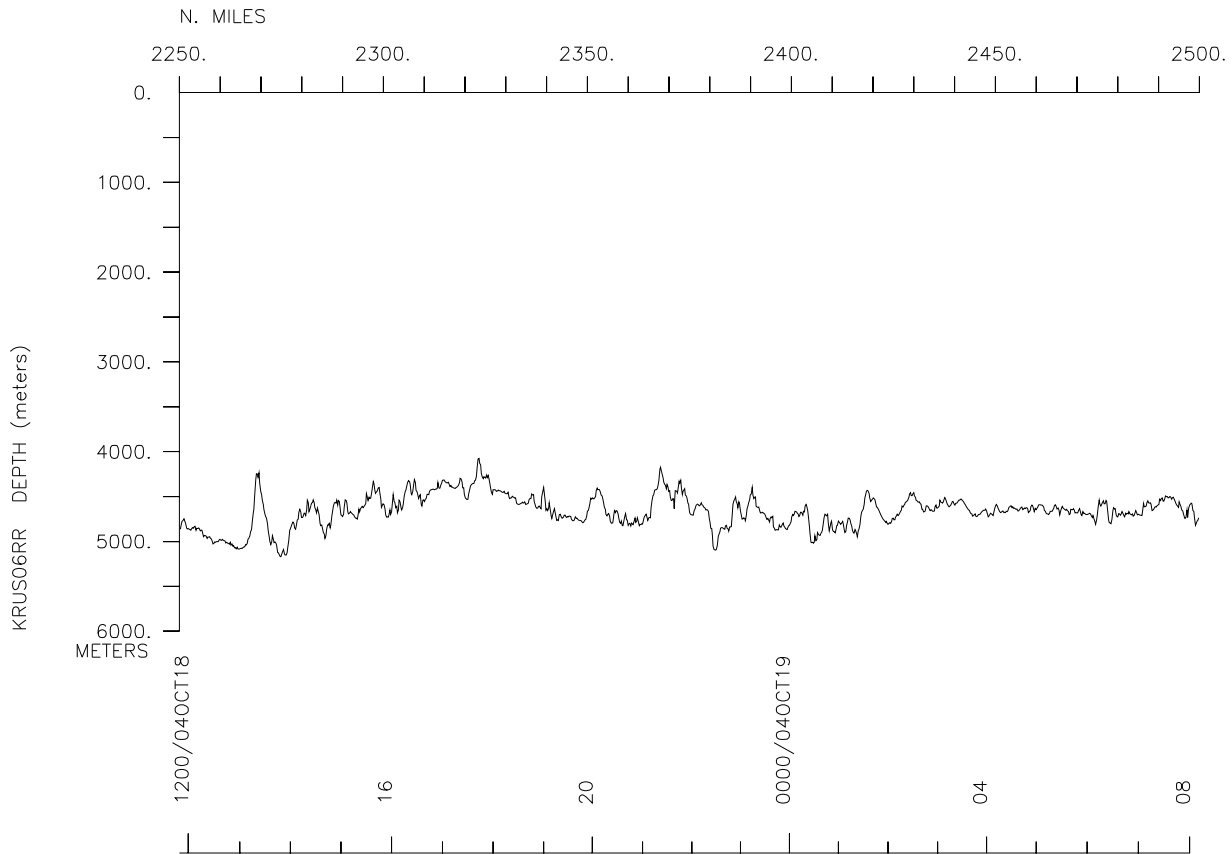
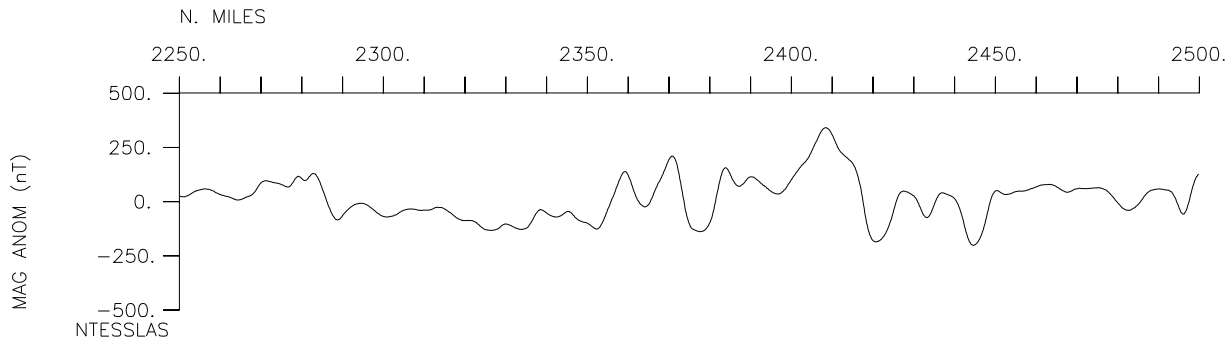
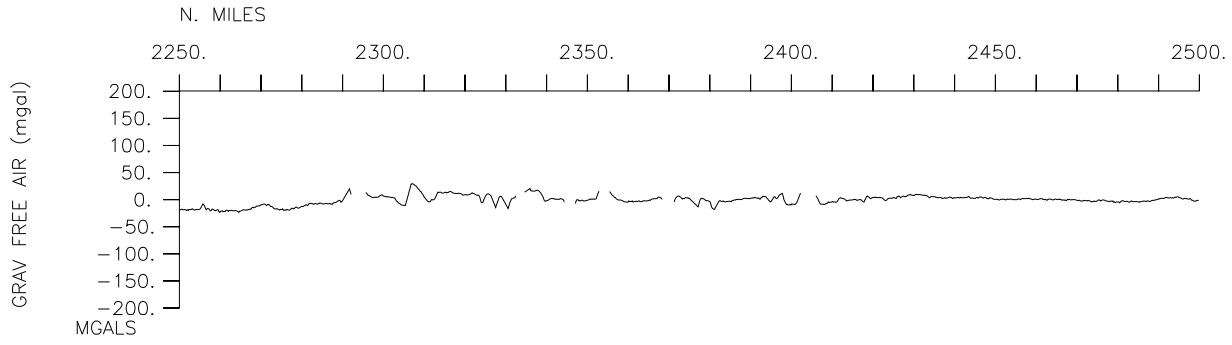


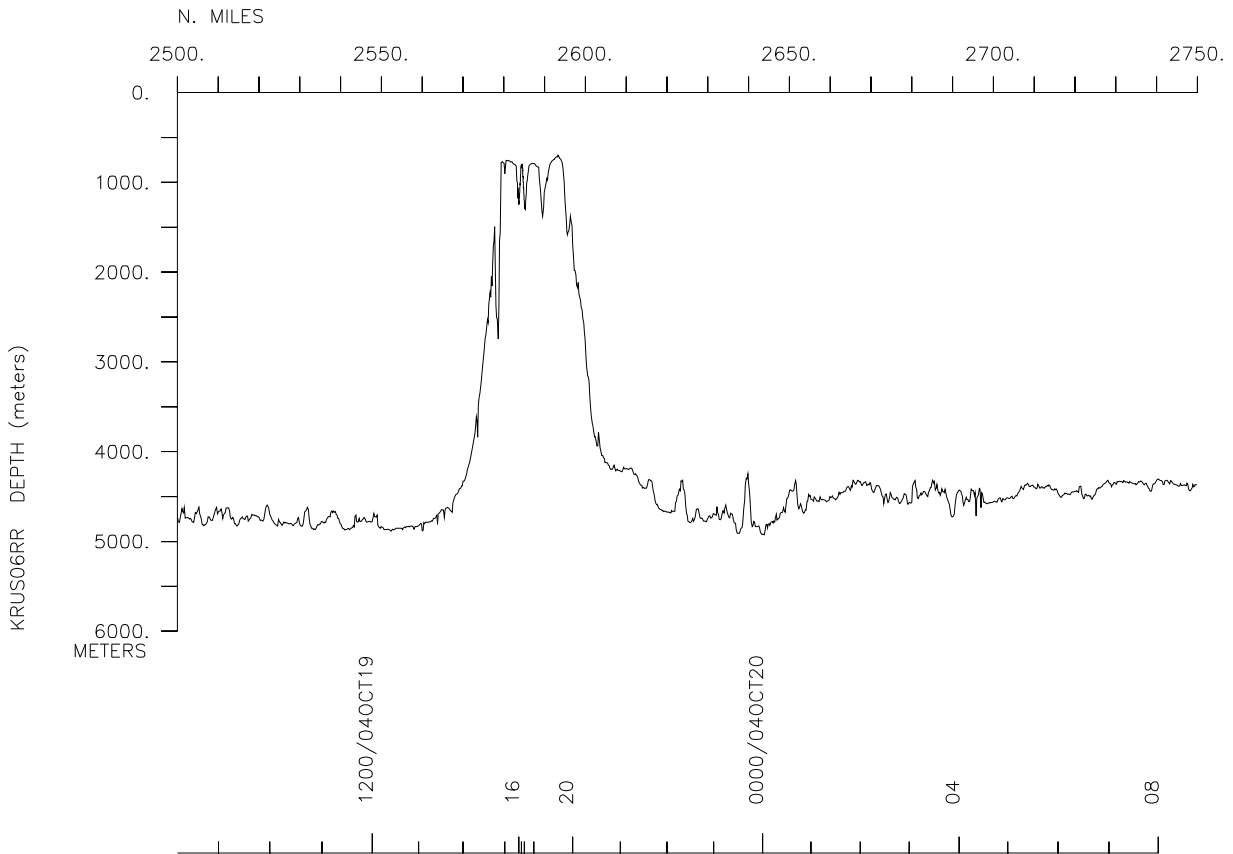
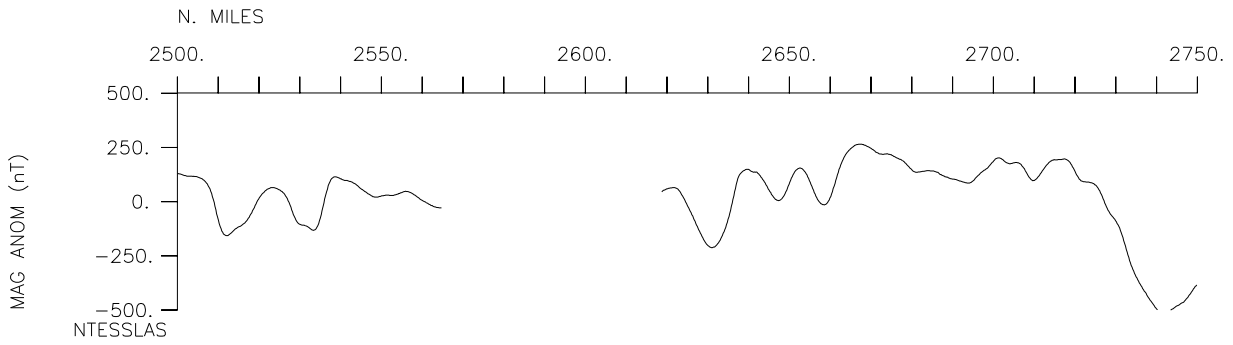
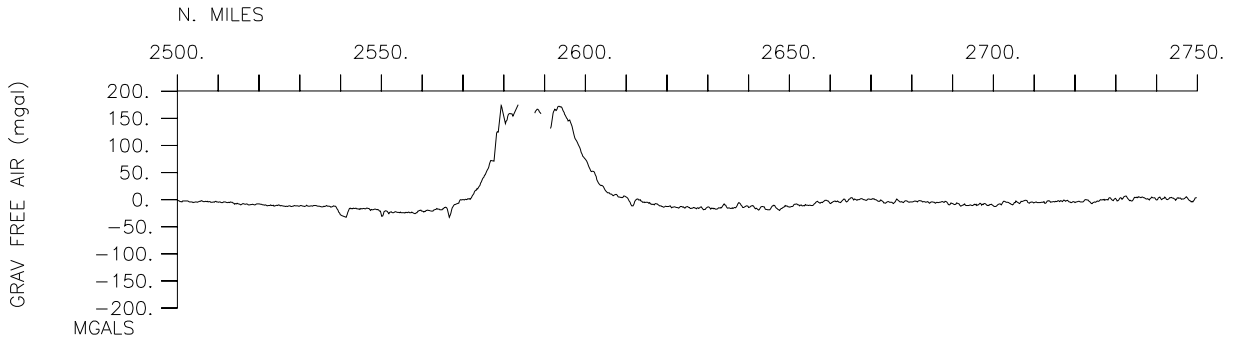


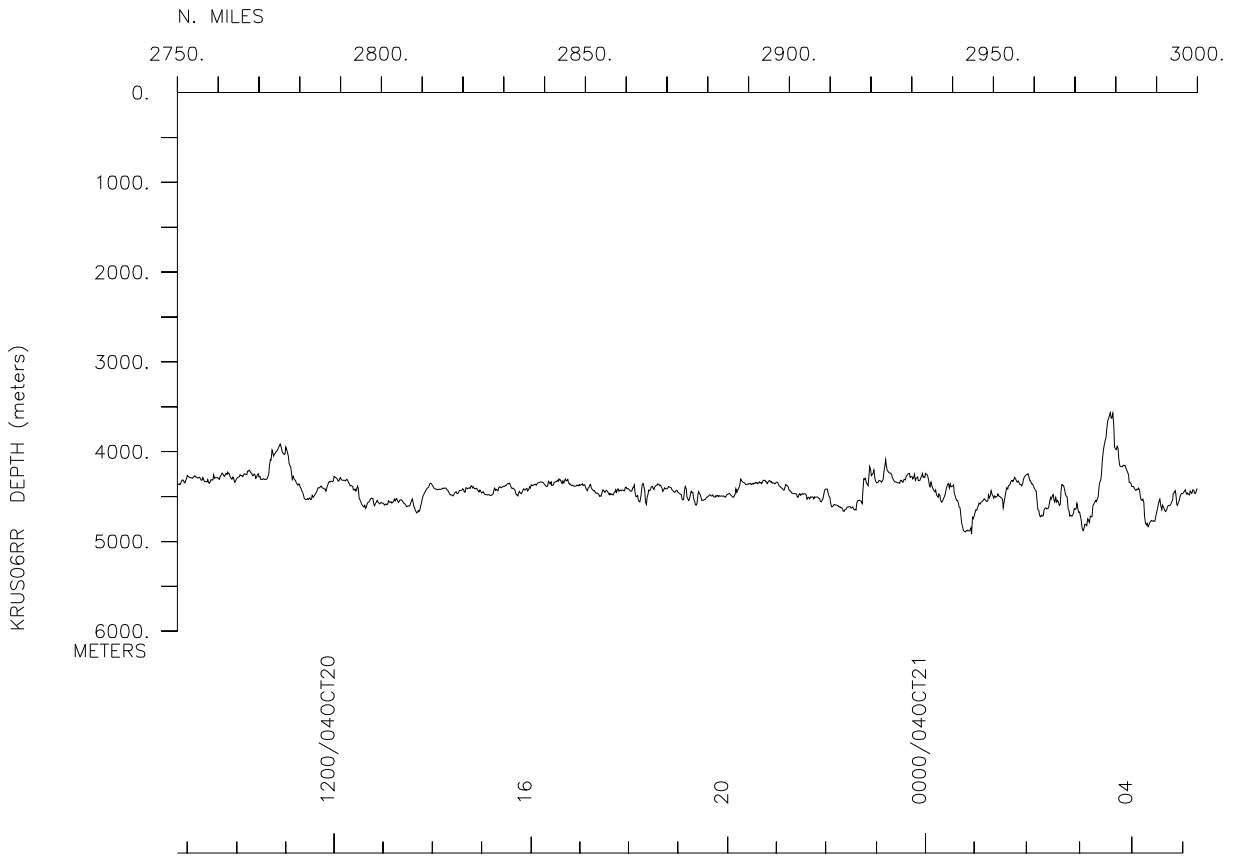
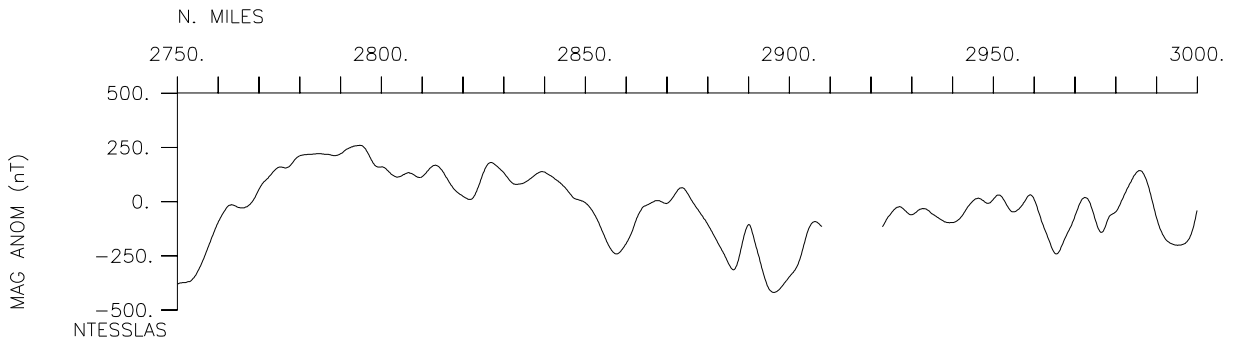
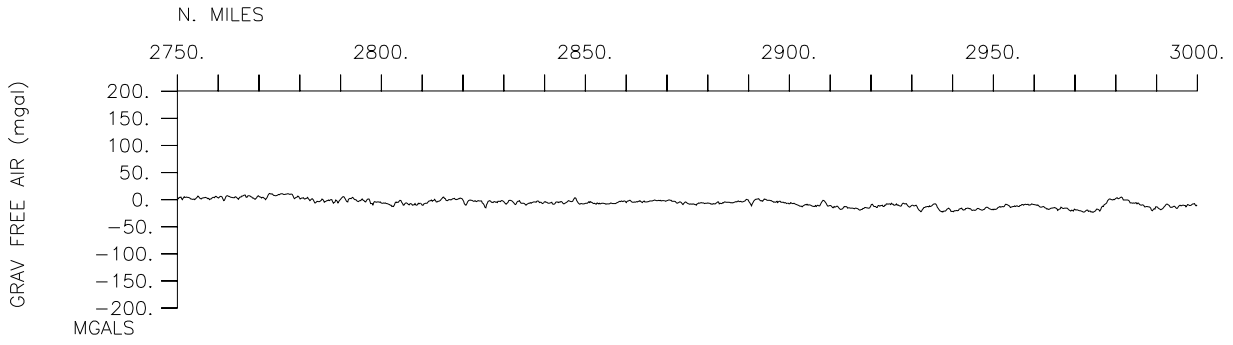


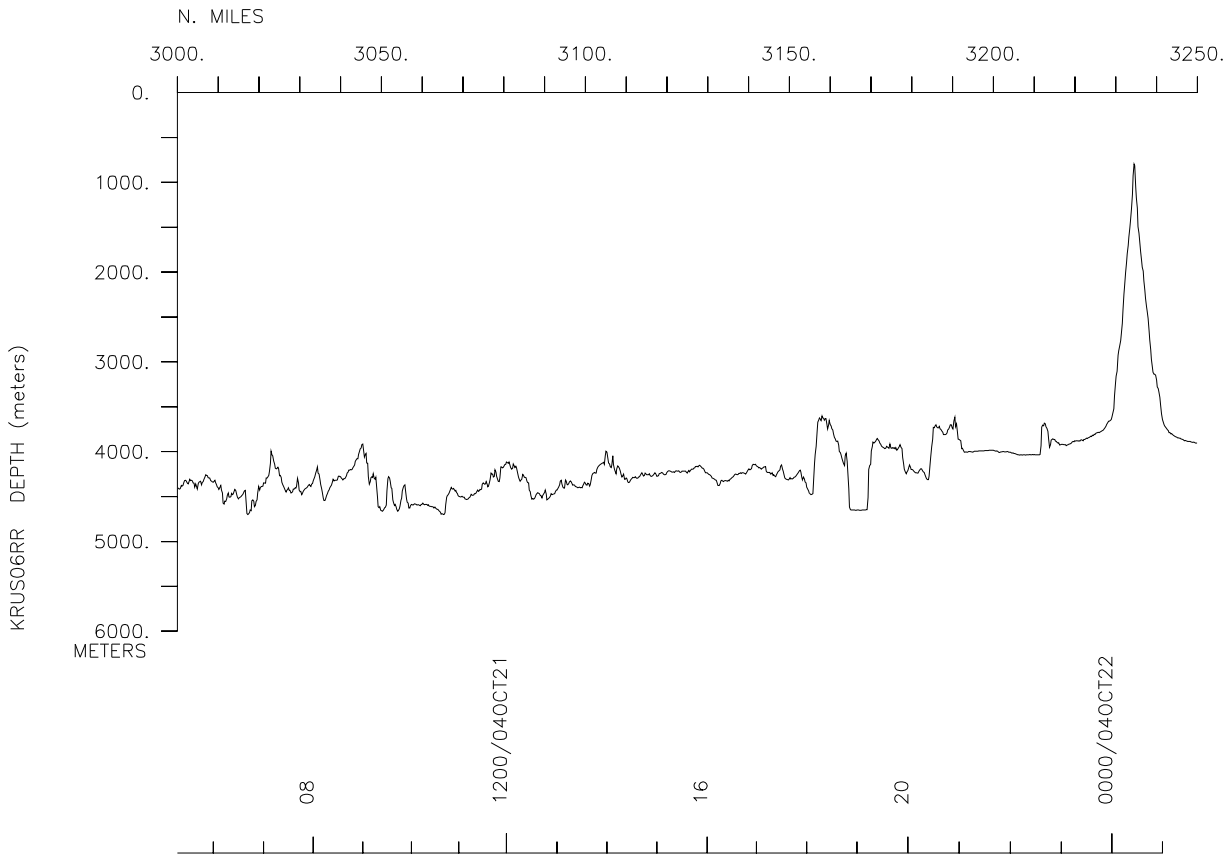
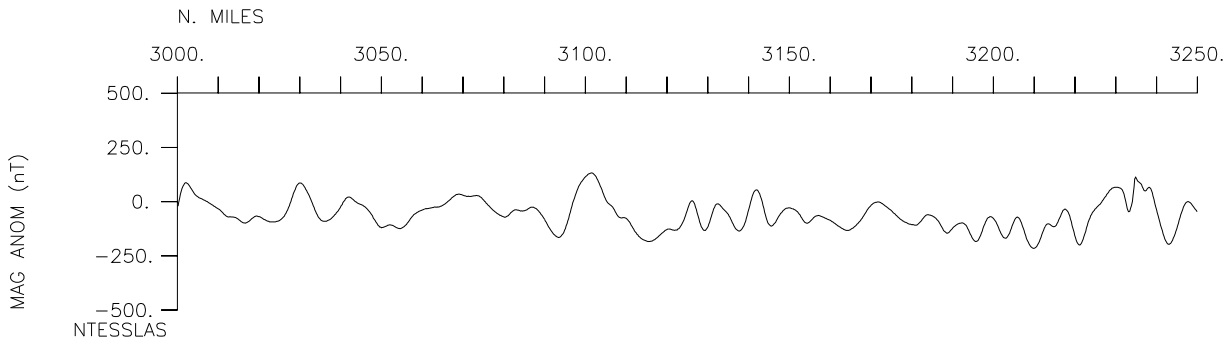
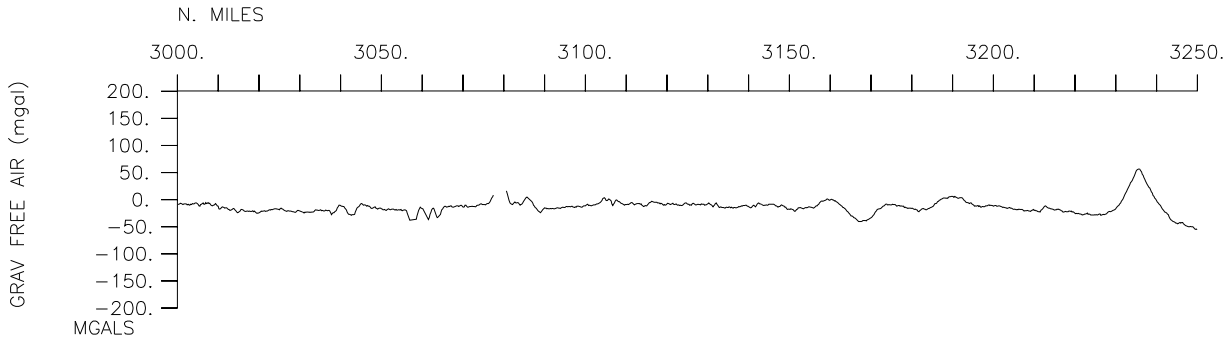


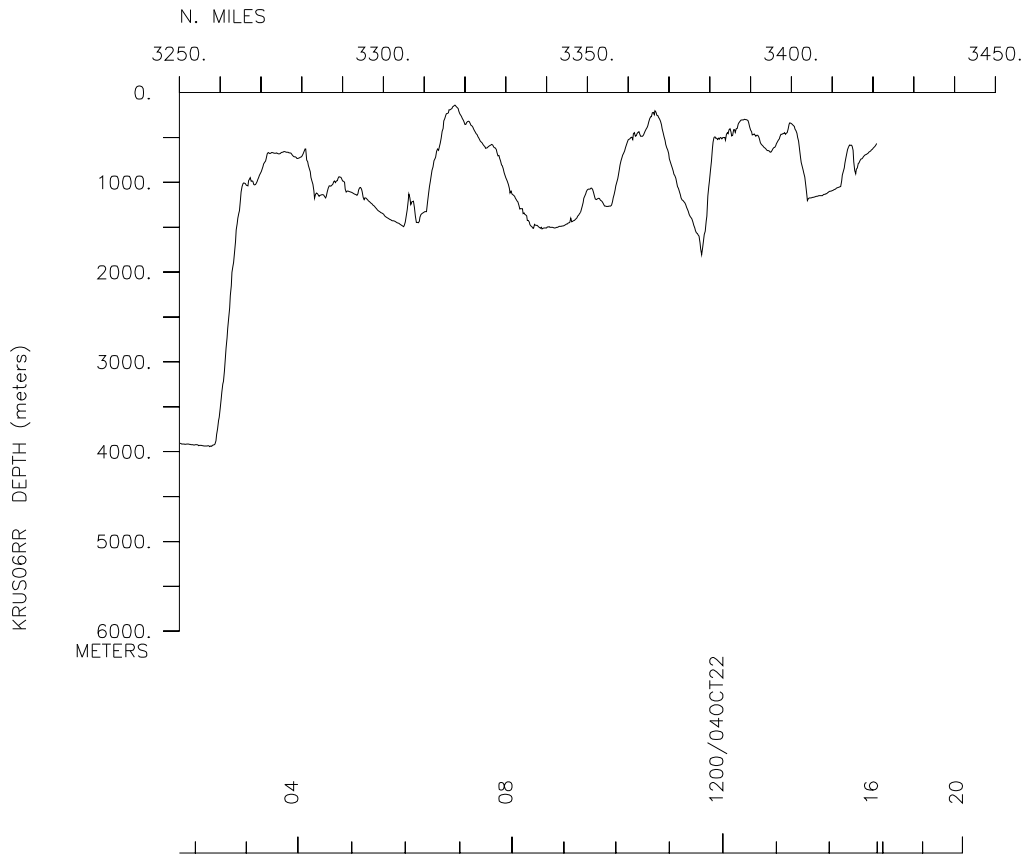
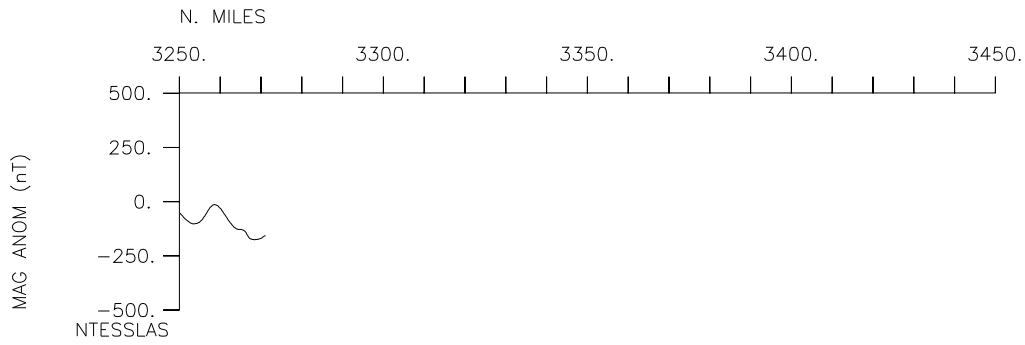
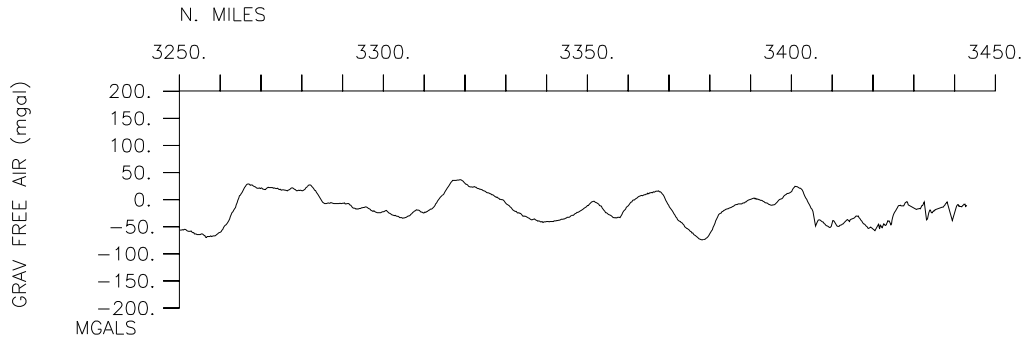












**** Ports ***

1736	101004	LGPT B Honolulu, HI	21-16.00N	157-49.00W	f	KRUS06RR
2022	221004	LGPT E San Diego, CA	32-40.00N	117-14.00W	f	KRUS06RR

**** Personnel ***

#	*****NAME*****	*****TITLE*****	*****AFFILIATION*****	**CRID**
PECS	SIO Lonsdale,P.	Chief Scientist	Scripps Institution	KRUS06RR
PESP	SIO Eakins,B.	Scientist	Scripps Institution	KRUS06RR
PESP	WHOI Sellers,W.	Technician	Woods Hole	KRUS06RR
PESP	SIX Crook,T.	Technician	Theil Engineering	KRUS06RR
PESP	WHOI Collins,P.	Technician	Woods Hole	KRUS06RR
PESP	WHOI Howland,J.	Technician	Woods Hole	KRUS06RR
PESP	WHOI Forte,P.	Technician	Woods Hole	KRUS06RR
PESP	WHOI Elder,R.	Technician	Woods Hole	KRUS06RR
PESP	WHOI Masias,N.	Technician	Woods Hole	KRUS06RR
PESP	WHOI Bolmer,S.	Technician	Woods Hole	KRUS06RR
PESP	SIX Scott,D.	Technician	Cash Back, Ltd.	KRUS06RR
PESP	SIX Harmon,A.	Technician	New Age	KRUS06RR
PESP	SIX Dodd,S.	Technician	Southampton Ocean	KRUS06RR
PESP	SIX Huan,J.	Scientist	KORDI	KRUS06RR
PESP	SIX Won,P.	Scientist	KORDI	KRUS06RR
PERT	STS Colt,C.	Resident tech	Scripps Institution	KRUS06RR
PECT	STS Quiel,B.	Computer tech	Scripps Institution	KRUS06RR

**** NOTES ***

#An 'X' in the (B)egin/(E)nd column following the sample code indicates no #sample or data recovered. A 'C' indicates continuation of data collection #from before the beginning or after the end of a particular leg, (moored #bottom instruments, for example.) The number appearing in the columns #between the sample identifier and the disposition code, for many sample #entries, is the water depth in corrected meters.

#GMT	DDMMYY	SAMP	B	SAMPLE	DISP				p	CRUISE
#TIME	DATE	TZ	CODE	E IDENTIFIER	CODE	LATITUDE	LONGITUDE		c	LEG-SHIP

**** Underway Data Curator - Shipboard Technical Support Group ext.41899 ***
 **** Digital Data Curator - Geological Data Center, S.P. Miller, ext.41898 ***

**** MultiBeam Data (SIMRAD) ***

1823	101004	0	MBSI	B	SIMRAD	multibeam	GDC	21-15.18N	157-50.73W	g	KRUS06RR
1455	221004	0	MBSI	E	SIMRAD	multibeam	GDC	32-50.25N	117-25.39W	g	KRUS06RR

**** Digital Magnetics (Earth Total Field) ***

1946	111004	0	MGDD	B	digital	magnetics	GDC	26-18.38N	156-52.61W	g	KRUS06RR
0323	221004	0	MGDD	E	digital	magnetics	GDC	32-55.58N	120-17.47W	g	KRUS06RR

**** Digital Gravity ***

1750	101004	0	GVDD	B	digital	gravity	GDC	21-18.88N	157-52.92W	g	KRUS06RR
2011	221004	0	GVDD	E	digital	gravity	GDC	32-42.35N	117-14.10W	g	KRUS06RR

#GMT	DDMMYY	SAMP	B	SAMPLE	DISP				p	CRUISE
#TIME	DATE	TZ	CODE	E IDENTIFIER	CODE	LATITUDE	LONGITUDE		c	LEG-SHIP
#-----	--	---	-	-----	----	-----	-----	-----	-	-----

*** Integrated Meteorological Acquisition System ***

1736	101004	0	IMET	B weather measurements	GDC	21-18.97N	157-53.17W	g	KRUS06RR
2022	221004	0	IMET	E weather measurements	GDC	32-42.40N	117-14.18W	g	KRUS06RR

*** Acoustic Doppler Current Profiler ***

1736	101004	0	ADCP	B current prof. 140kHz	GDC	21-18.97N	157-53.17W	g	KRUS06RR
2022	221004	0	ADCP	E current prof. 140kHz	GDC	32-42.40N	117-14.18W	g	KRUS06RR

1736	101004	0	ADCP	B current prof. 50 kHz	GDC	21-18.97N	157-53.17W	g	KRUS06RR
2022	221004	0	ADCP	E current prof. 50 kHz	GDC	32-42.40N	117-14.18W	g	KRUS06RR

*** Expendable Bathythermographs ***

2124	101004	0	BTXP	TF_00001	GDC	21-37.69N	157-24.37W	g	KRUS06RR
2135	101004	0	BTXP	TF_00002	GDC	21-39.87N	157-23.34W	g	KRUS06RR
1906	111004	0	BTXP	TF_00003	GDC	26-09.93N	156-53.41W	g	KRUS06RR
2201	121004	0	BTXP	TF_00004	GDC	29-06.41N	154-14.29W	g	KRUS06RR
0122	151004	0	BTXP	TF_00005	GDC	29-56.95N	149-06.52W	g	KRUS06RR
2214	151004	0	BTXP	TF_00006	GDC	30-47.20N	145-16.99W	g	KRUS06RR
2233	161004	0	BTXP	TF_00007	GDC	31-23.18N	141-14.49W	g	KRUS06RR
2242	161004	0	BTXP	TF_00008	GDC	31-23.15N	141-12.33W	g	KRUS06RR
0307	191004	0	BTXP	TF_00009	GDC	31-35.12N	134-35.93W	g	KRUS06RR
1916	191004	0	BTXP	TF_00010	GDC	32-51.35N	132-34.02W	g	KRUS06RR
1920	191004	0	BTXP	TF_00011	GDC	32-51.36N	132-33.27W	g	KRUS06RR
1924	191004	0	BTXP	TF_00012	GDC	32-51.34N	132-32.64W	g	KRUS06RR
1929	191004	0	BTXP	TF_00013	GDC	32-51.30N	132-31.84W	g	KRUS06RR
1933	191004	0	BTXP	TF_00014	GDC	32-51.26N	132-31.22W	g	KRUS06RR
1937	191004	0	BTXP	TF_00015	GDC	32-51.21N	132-30.58W	g	KRUS06RR
1945	191004	0	BTXP	TF_00016	GDC	32-51.12N	132-29.31W	g	KRUS06RR
1948	191004	0	BTXP	TF_00017	GDC	32-51.08N	132-28.84W	g	KRUS06RR
2130	201004	0	BTXP	TF_00018	GDC	33-37.26N	126-36.01W	g	KRUS06RR
2141	201004	0	BTXP	TF_00019	GDC	33-38.53N	126-33.82W	g	KRUS06RR
0246	221004	0	BTXP	TF_00020	GDC	32-56.51N	120-26.43W	g	KRUS06RR

#				End Sample Index					KRUS06RR
---	--	--	--	------------------	--	--	--	--	----------