

National Archives & Public Records Services
of Papua New Guinea

PATROL REPORTS

District : Western Highlands

Station : Jimi River

Volume : 2

ISBN NO : 9980-910-94-1

Accession NO : 496

Period : 1958-1959

Filed by/ for the National Archives of Papua New Guinea,
Port Moresby, 1996.

Sole Custodian: National Archives of Papua New Guinea.

Papua New Guinea Patrol Reports

Digitized version made available by



Copyright: Government of Papua New Guinea. This digital version made under a license granted by the National Archives and Public Records Services of Papua New Guinea.

Use: This digital copy of the work is intended to support research, teaching, and private study.

Constraints: This work is protected by the U.S. Copyright Law (Title 17, U.S.C.) and the laws of Papua New Guinea. Use of this work beyond that allowed by "fair use" requires written permission of the National Archives of Papua New Guinea. Responsibility for obtaining permissions and any use and distribution of this work rests exclusively with the user and not the UC San Diego Library.

Note on digitized version: A microfiche copy of these reports is held at the University of California, San Diego (Mandeville Special Collections Library, MSS 0215). The digitized version presented here reflects the quality and contents of the microfiche. Problems which have been identified include misfiled reports, out-of-order pages, illegible text; these problems have been rectified whenever possible. The original reports are in the National Archives of Papua New Guinea (Accession no. 496).

Timi River (Special)

12. 4. 5 1954/55



TERRITORY OF PAPUA AND NEW GUINEA

30/1/60 ✓

In Reply
Please Quote

No. 30/1-2470

Western Highlands District,
Sub-District Office,
MOUNT HAGREN.

23rd February, 1959.



GPH/SHP

The Director,
Department of Native Affairs,
PORT MORESBY.

Special Report - Familiarization Patrol
Jimi Area - S.A. RYAN, DISTRICT OFFICER.

Attached please find copy of special report by
Mr. R.A. Ryan, Officer-in-charge, Jimi Patrol Post, together
with comments from the Assistant District Officer.

The general situation in the Jimi Valley appears
to be quite satisfactory. Matters requiring attention will
be taken at District level.

S. M. Foley
(S.A. Foley)
District Officer.

TERRITORY OF PAPUA AND NEW GUINEA.

Jimi Patrol Post,
Fagen Sub-District,
Western Highlands District.

31 - 210.

4th February, 1959.

Assistant District Officer,
Fagen Sub-District,
Western Highlands District,
MOBET HAGEN.

SPECIAL REPORT - FAMILIARIZATION PATROL JIMI AREA.

BRUCE A. EVAN P.O.

A patrol to the North Jimi wall and the Jimi Headwaters was conducted by Mr. Patrol Officer Ryan during the period 21/1/59 to 3/2/59.

The objects of the patrol were;

1. Familiarization with the area,
2. Inspection of KOL(KORREL) airstrip site, and
3. Routine Administration.

It had been intended to conduct this patrol mainly on the North Wall of the Jimi River but for various reasons this plan had to be modified.

1. A number of the lower North Wall groups were at the Jimi Patrol Post at the time of the Patrol's departure engaged on airstrip construction.

2. Mr. H.A. Richardson O.P.O. was expected to start work on the KOL(KORREL) strip, as well as to conduct short census patrols in the Jimi Headwaters, and it was desired to familiarize myself with the locality before his departure on the 9/2/59. In this way it is hoped that any problems that might occur could have my informed advice.

3. A full census patrol is planned for the RIK - TAGOFA area, commencing in the middle of February.

As the patrol was of a special nature to familiarize myself with the area the usual Patrol Report form will not be submitted. The Report will take the form of a more detailed diary than usual, followed by various comments. It is hoped that this will be sufficient for your information.

AGRE.

21st Jan 1959.

Departed Jimi Patrol Post at 0950 hours and after descending to Jimi River crossing (same bridge) ascended to KWOP on the North side of the Jimi River. Arrived KWOP at 1306 hours. Reception here very good. The Village Officials approached the Patrol requesting that all their "headmen" be issued with badges of office. As this group already have one Eulusi and the Tultu's from a population of 345 the request was refused with suitable explanations.

- 22nd January. Reported KIRIP at 0810 hours and arrived KORIAM at 1040 hours. Reception also very good at this Rest House. The rumour that a Mission might start in their area had disturbed these people somewhat and they pointed out that they would be unable to aid any mission - at least for some time. They did not appear antagonistic towards the mission entry but simply were not interested.
- 23rd January. Left KORIAM at 0810 hours and arrived KOGINI two hours later. Reception good. Lalusi KOS reported a number of deaths and also that many of his people had respiratory troubles. Deaths mainly among old people and not over excessive.
- 24th January. One and three-quarter hours from KOGINI to KUBONGA. These people seem to have had more Mission and other outside influence than the preceding groups. Reception quite good and officials report all is well among their people.
- 25th January. Sunday. Observed in order to allow Patrol members to recover from colds.
- 26th January. Departed KUBONGA at 0800 hours and arrived at KUBORA at 0930 hours. Reception good. The forgoing groups are all engaged at intervals in work on the KUBORA 'strip but these people at KUBORA will work on the KOL(KORAKU) 'strip, when work is started. An aid Post orderly conducts an aid Post at KUBORA but apparently shows little real interest in it. This is a pity as it is situated in a convenient position. The post is administered vicariously from KIRIP.
- 27th January. From KUBORA to KUBONGA one and three-quarter hours. Reception very good. A good aid-post (ex Koriwahgi) is situated at this Rest House. The people were most enthusiastic concerning the KOL(KORAKU) 'strip here. Also enquired if a Government Post would be set up there.
- 28th January. From KUBONGA one hour down to Jini River crossing (same bridge) and two hours ascent to KUBULAWGE. Village Officials from groups not to be visited this Patrol reported to the Patrol here. Reception at KUBULAWGE good but one had the feeling that there were some reservations. Mission influence divides these people's affiliations. Lalusi KOS a powerful natural leader of a large group (774) but apparently not always so co-operative as he might be.
- 29th January. Three hours strenuous walking from KUBULAWGE to KUBILPAI. The reception here somewhat less enthusiastic than in former places but still good.
- 30th January. Two hours walk to new Rest House at KUBILPAI. This Rest House has been constructed for the use as a permanent residence of the Officer supervising the construction of the KOL 'strip. Very enthusiastic welcome. The 'strip site was inspected and particular problems in its construction noted.
- 31st January. Departed KUBILPAI at 0810 hours and arrived at KUBI(KUBI) at 1110 hours. I had not been expected to stop here over night despite warning and reception not organized. Nevertheless it proved very good on an impromptu basis. The Patrol was visited, with minor disputes, by Officials of two further groups as seen during this Patrol.

1st February.

A two hour walk from HANS (JIMBINING) to OLMA Rest House. Reception very good indeed. One of these groups assembling here is at present at TABIBUGA working on the 'strip. The KIPINGA/AIBIGA group seen this Patrol also work at intervals on the TABIBUGA strip. This village also request that more Officials be appointed but again refused as ample officials already appointed.

2nd February.

Four hours from OLMA to KARAP. Reception at KARAP good. Apologies were offered for fancied lack of welcome when I initially proceeded to the Jini Patrol Post and a big effort was made to make amends. The moral of these people is good despite the fact that they are engaged on the 'strip at TABIBUGA and the heavy burden of supplying carriers for supplies to the Jini Patrol Post at frequent intervals. Rev. M. Conder and Rev. E. Bromley of the Church of Nazareth Mission arrived KARAP at 1630 hours ex HANS, on an investigation trip to the Middle South Jini area to find the mission potential of that area. Route, population distribution and other factors in the area discussed with these people.

3rd February.

Departed KARAP at 0750 hours and arrived Jini Patrol Post at 1120 hours.

ROADS.

The roads throughout the area patrolled represent a remarkable achievement when the exceedingly rough nature of the terrain is considered. It is true that at times walking is arduous but one can expect nothing else in such country. Without an all-out effort, involving such work the roads cannot be readily improved.

The present commitment of all available labour on airstrip construction, plus the fact that patrols have no real difficulty at present in traversing the country, tend to indicate a policy of road maintenance only. It may be possible in the future to develop a true "graded" road system but at this stage such a program is not warranted.

NATIVE AFFAIRS.

Little litigation was brought before the Patrol in the areas visited. Two cases of adultery (Reg. 84(2) N. R. S.) were dealt with in the Court for Native Affairs and a number of minor disputes were settled amicably.

The natives' attitude toward the Administration and in

particular towards the Administration Works Program was good. The Patrol did not try and minimize the extent of the committed work but rather tried to encourage enthusiasm for the work. The enthusiasm seemed to be present at all the assembly points and, while it may at times lag in the future, basically no difficulty is expected in maintaining adequate labour forces from the people visited.

The people of the Jimi headwaters have had a fair degree of Mission contact and are in constant touch with Merowahgi, Nondagi and Bandi areas. They apparently feel somewhat neglected in the fact that the Jimi Patrol Post is established in, what they regard, a backward "bush" area. For this reason they were most anxious that a Patrol Post, Hospital or other Administration organization be established in the KOL area. This does in fact seem a logical extension of Administration activities in the Jimi area.

No definite promise as to the establishment of a "station" could be given these people. The attitude taken was; 'Let's get the airstrip finished first. An airstrip is the first thing that a "station" will require and the Administration will sympathetically consider the establishment of a "station" when it is finished.'

At the same time it was pointed out that the KOL area was administered from the Jimi Patrol Post and that they were not to regard themselves, as hinted by several spokesmen, as independent people.

Mission influence would appear to be on the increase in the whole Jimi valley. This is inevitable but it is hoped that for this year at least the additional work imposed on the natives by the Missions will be kept to a minimum until ^{the} two airstrips are finished. It was made clear in all places that everyone had obligations toward the Administration and that if certain people cared to undertake additional obligations to other organizations this in no way exempted them from the basic obligations owed to the Administration.

It seems to me that Mission work in the Jimi Valley must of necessity be limited until airstrips are available and it is to the Missions' ultimate benefit to encourage the natives, or at least to not discourage them with added tasks, in the present 'strip building program. However present indications point to a "race" between the Lutheran, Roman Catholic, Church of Nazarene and Swiss Evangelical Brotherhood Missions for suitable Mission sites in the Jimi area. The Anglican mission is of course extending its influence across the Smark ranges into the Jimi Valley.

VILLAGE OFFICIALS.

The initial appointment of Village Officials would appear to have been done with insufficient knowledge of those appointed. It is evident that the later appointments made from the Jimi Patrol Post have been recommended with much more care and local knowledge.

Nevertheless the general run of Officials were co-operative and seem to have a fair idea of their duties and powers. These duties and powers were outlined again to each group of Officials and they were promised full support from the Administration if they struck difficulties when carrying out lawful duties. They were warned however to be careful to not exceed their powers and in all cases of doubt to seek guidance from the Administration Officials at the Jimi Patrol Post.

KOL (KURANEL) AIRSTRIP.

A rather brief inspection was made of the KOL 'strip site, mainly so that I would be able to appreciate any difficulties that Mr. Richardson might encounter in the initial construction. The work is fairly extensive - the main task being the removal of poor material and its replacement by suitable filling. However once this has been accomplished the work should be straightforward.

6.

Drainage of the general area has proceeded satisfactorily and the initial completion of this task should make the construction work easier. It is anticipated that a labour force of two-hundred men will be employed on the construction of this strip.

The only major supply that will be required at KOL is salt for the purchase of food for the labour employed. The possibility of air-dropping salt direct at KOL will be investigated. The airstrip site itself should make a suitable drop site - dropping in a reverse direction to the proposed operation of the strip. In any case a drop site should not produce no particular difficulty in the relatively open terrain near KOL. The moral boost of such an air-drop should also be considerable.

Spades, picks and crow-bars will also be required but sufficient are available for initial work to commence. These, together with tools required for the TARIKUA strip will form the subject of separate correspondence.

General.

In all the position in the areas visited appears most satisfactory. A useful knowledge and contact was gained of an area which, by force of circumstances, will be largely the responsibility of Mr. M.A. Richardson, C.P.C. until he proceeds on leave early in April of this year.

Barry A. Ryan
Barry A. Ryan
Patrol Officer, R.S.M.



TERRITORY OF PAPUA AND NEW GUINEA

PATROL REPORT

District of Eastern Highlands. Report No. JIMI River No. 1 - 56/58.

Patrol Conducted by H.A. Richardson, Cadet Patrol Officer.

Area Patrolled Upper JIMI Valley and JIMI Headwaters.

Patrol Accompanied by Europeans Nil.

Native Police 1, Interpreter 1.

Duration—From 11/ 9/1958 to 15/ 9/1958

Number of Days Six days.

Did Medical Assistant Accompany? No.

Last Patrol to Area by—District Services 4-5/1958 - JIMI P/R No. 2 - 57/58.

Medical 2/1958 - Kerowagi S.M.A. Inspection of Kerowagi-staffed Aid-Posts

Map Reference ARMY Strap. 4 miles 1/1 Iron PAMU sheet.

- Objects of Patrol 1. Inspection of Airstrip site at KOL, JIMI Headwaters;
2. Survey of 2 areas of land at KOL applied for by Lutheran Mission.

DIRECTOR OF DISTRICT SERVICES
AND NATIVE AFFAIRS,
PORT MORESBY.

Forwarded, please.

1370 1958

District Commissioner

Amount Paid for War Damage Compensation £

Amount Paid from D.N.E. Trust Fund £

Amount Paid from P.E.D.F. Trust Fund £

TERRITORY OF PAPUA AND NEW GUINEA



In Reply
Please Quote

No. 30/1-2367.
(WHC.158).

Western Highlands District,
District Office,
MOUNT HAGEN.

12th February, 1959.

RIS:MOB

The Director,
Department of Native Affairs,
PORT MORESBY.

Subject: Patrol Report - JIMI RIVER No. 1-58/59
Cadet Patrol Officer H.A. Richardson.
UPPER JIMI and JIMI HEADWATERS.

Attached please is the above report. As the patrol was completed whilst I was still performing the functions of District Officer, I have dealt with it on that basis and regret the delay involved in its submission.

Diary

Satisfactorily sets out movements of patrol.

Kol Aerodrome Site

This site was discovered by Patrol Officer Griffin. The first D.C.A. Survey (Unger and Colombet) indicated that a great deal of work would be necessary but a second survey (Baker and Colombet) has reduced considerably the work necessary. Cutting out soft top soil and replacing with solid fill, compacting the fill and finally grassing the area will take some time and much labour but the local people are enthusiastic and willing to help.

Lutheran Mission New Guinea - Lana

These applications have been dealt with under separate correspondence (our reference 34-B-57).

Native Affairs

Satisfactory. The Officer in Charge, Jimi River, has the levying of excessive compensation for marital offences in hand.

Medical and Health

The unsatisfactory multiplicity of control of aid posts in the Upper Jimi has been mentioned before. The Regional Medical Officer, Goroka, can see nothing peculiar in aid posts, in the same vicinity, being controlled by various Public Health Department authorities in Mount Hagen, Minj and Kerowagi. Officers from all three places patrol the area. Apart from the resultant overall lack of satisfactory control and uneconomic use of manpower, the confusion caused in the minds of the local inhabitants by this diversity of control has proved bad from the viewpoint of native administration.

Education and Missions

The Catholic Mission has "squatted" in the area. Land applications of a sort, without fees, and without adequate details have been received and are receiving attention. Action against the Mission, in view of past experience, would be unlikely to produce any worthwhile results. The squatting took place long before the "applications" were lodged with the Director of Lands.

The Lutheran Mission has acted correctly but it is hoped that the intention of teaching Kotte is foiled.

Roads and Bridges

Collapses of a section of the road under the weight of a carrier's gear as an indication of the roughness of the terrain.

Mr. Richardson was given very detailed instructions and carried them out with commendable and meticulous care. The patrol, although short, was thorough, results satisfactory and the report will be presented.

As indicated in his comments, various matters beyond Mr. Richardson's jurisdiction were later dealt with by the Officer in Charge, Mini Patrol Post.

REMARKS

Complimentary note on work of patrol.

Administrative

File also was discovered. (2.1. S. 11111) District Commissioner. [Signature]

Administrative and Finance

These applications have been dealt with under separate correspondence (see references 14-2-41).

General

Satisfactory. The Officer in Charge, Mini Post, and the leaving of executive responsibility for Mini Post is noted.

Health and Welfare

The satisfactory condition of affairs in the area is noted. The Officer in Charge, Mini Post, has been mentioned before. The K. and Medical Officer, Kotte, and his various patients in the area were visited, being controlled by various Public Health Department officers at Kotte, Kigori, Kigori and Kigori. Officers from all these areas patrol the area. About 1000 lbs. of supplies were left of satisfactory control and satisfactory use of supplies. The Officer in Charge, Mini Post, and his staff are noted for their satisfactory control and general good work from the viewpoint of active administration.



TERRITORY OF PAPUA AND NEW GUINEA

In Reply
Please Quote

No. 30/1-2367.
(WHD.188)

Western Highlands District,
District Office,
MOUNT HAGEN.

RIS:MOB

12th February, 1959.

The Director,
Department of Native Affairs,
PORT MORSBY.

Subject : Patrol Report - JIMI RIVER No. 1-58/59.
Cadet Patrol Officer H.A. Richardson.
UPPER JIMI and JIMI HEADWATERS.

Attached please is the above report. As the patrol was completed whilst I was still performing the functions of District Officer, I have dealt with it on that basis and regret the delay involved in its submission.

Diary

Satisfactorily sets out movements of patrol.

Kol Aerodrome Site

This site was discovered by Patrol Officer Griffin. The first D.C.A. Survey (Ungar and Colombet) indicated that a great deal of work would be necessary but a second survey (Baker and Colombet) has reduced considerably the work necessary. Cutting out top soil and replacing with solid fill, compacting the fill and finally grassing the area will take some time and much labour but the local people are enthusiastic and willing to help.

Katharan Mission New Guinea - Land

These applications have been dealt with under separate correspondence (our reference 34-B-57).

Native Affairs

Satisfactory. The Officer in Charge, Jimi River, has the levying of excessive compensation for marital offence in hand.

Medical and Health

The unsatisfactory multiplicity of control of aid posts in the Upper Jimi has been mentioned before. The Regional Medical Officer, Goroka, can see nothing peculiar in aid posts, in the same vicinity, being controlled by various Public Health Department authorities in Mount Hagen, Mij and Kerowagi. Officers from all three places patrol the area. Apart from the resultant overall lack of satisfactory control and uneconomic use of manpower, the confusion caused in the minds of the local inhabitants by this diversity of control has proved bad from the viewpoint of native administration.

Education and Missions

The Catholic Mission has "squatted" in the area. Land applications of a sort, without fees, and without adequate details have been received and are receiving attention. Action against the Mission, in view of past experience, would be unlikely to produce any worthwhile results. The squatting took place long before the "applications" were lodged with the Director of Lands.

The Lutheran Mission has acted correctly but it is hoped that the intention of teaching Kotte is foaled.

Roads and Bridges

Collapse of a section of the road under the weight of a carrier serves as an indication of the roughness of the terrain.

Mr. Richardson was given very detailed instructions and carried them out with commendable and meticulous care. The patrol, although short, was thorough, results satisfactory and the report well presented.

As indicated in his comments, various matters beyond Mr. Richardson's jurisdiction were later dealt with by the Officer in Charge, Jini Patrol Post.


(R.L. SAINIER)
District Commissioner.

TERRITORY OF PAPUA AND NEW GUINEA

INTERNAL SECURITY

Mr. Richardson's report on his patrol with the JIMI Patrol Post, Ref. 30/1 - 150

JIMI Patrol Post,
Mount Hagen Sub-District,
Eastern Highlands District

September 27 / 1958

The District Commissioner,
Western Highlands District,
MOUNT HAGEN

Patrol Report JIMI River No. 1 - 38/58

-Cadet Patrol Officer E. A. Richardson

Herewith the Report of a patrol by Cadet Patrol Officer E. A. Richardson in the JIMI headwaters.

The objects of the patrol (outlined in my Patrol Instructions - ref. 30/1 (1/6) - 129 of 9.9.58 attached) were achieved. Mr Richardson appears to have followed faithfully the instructions he received.

This was Mr Richardson's first solo patrol and the Report is the first he has submitted. The work done, and its presentation in the Report, appear generally satisfactory. The patrol was Mr Richardson's introduction to the JIMI headwaters; he took up his posting at JIMI Patrol Post on August 29.

Preparation of KOL Airstrip Site:

District Airport Inspector Mr R. R. Unger and chairman Mr G. F. Colompet (now at JIMI Patrol Post on inspection of TABIBOGA airstrip site) propose to move 5/10/58 with O. I. C. JIMI to KOL for inspection, etc. of the airstrip site there (land name "AURAMEL"). There can be little doubt that the 'strip site at KOL will receive the approval of Department of Civil Aviation. When Mr Unger's design and construction details, etc. are made available the work can be pushed ahead.

It is considered that on both JIMI airstrip development projects (at TABIBOGA and at KOL) constant European supervision is highly desirable.

Survey of Lead - Application by Lutheran Missions:

Mr Richardson's Sketch Plans and Locality Sketches have been received. They will be submitted with the Report of the Lead Investigation to be undertaken during my proposed visit to KOL with the DCA party.

Native Affairs:

Mr Richardson's comments are realistic and need little elaboration.

Magisterial:

The brawl at KOL will be investigated during my impending patrol in the headwaters. The people of KOL are an enthusiastic and hot-headed lot and need firm handling.

/ concl. over

Medical and Health:

Mr Richardson's prompt action with regard to the reported dysentery at OLNA was sound.

The Aid Post set-up in the JIMI has been outlined in full a number of times. The unsatisfactory situation might have been improved by the posting of a European Medical Assistant to the JIMI but, as the District Commissioner is aware, that proposed posting did not eventuate. As things stand now, the pre-1956 position in re JIMI Aid Posts still obtains.

Appeals and Missions:

The District Commissioner is "au fait" with the movements and operations of both Lutheran and Catholic Missions in the JIMI headwaters.

Mr Jester's applications for Mission and Special Leases will be investigated during my visit to KOL in October.

Roads and Bridges, etc.:

Considering the topography of the JIMI and the needs which patrol roads are expected to satisfy (pedestrian traffic only) the JIMI is well covered by adequate graded patrol roads. Maintenance is generally satisfactory.

The Patrol Report is forwarded in quadruplicate.

Claim for Carriage Allowance is attached.



(R.F. GRIFFIN) D/O
Officer-in-Charge

Copy forwarded to Mr Richardson, for information.

TERRITORY OF PAPUA AND NEW GUINEA

Ref. 30/1 }
1/3 } - 129

great of the undertaking.

The people of HBL have borne the brunt of the...
JIMI Patrol Post,
Mount Hagen Sub-District,
Eastern Highlands District

September 9 / 1955

Mr E.A. Richardson,
Cadet Patrol Officer,
JIMI Patrol Post

PATROL TO KOL AREA - JIMI Headquarters

In confirmation of discussions over the past few days:-
land investigation will be conducted by...

1. Please make ready to leave JIMI Patrol Post about 8 a.m. THURSDAY September 11/1955 to proceed to KOL in the JIMI Headquarters.

2. Allowing two days for the walk to KOL, two days at KOL and two days for the return journey, you should arrive back here on the afternoon of Tuesday, September 16.

Your route will be JIMI Patrol Post - KOKORNDIU - MINEAP - ULHA - KOL; follow the same route on the way back. On both the outward and return journey remain overnight at KOKORNDIU.

3. Two police will be selected to accompany you.

4. At KOL you will contact Constables KODIN and IAMA of JIMI Detachment. Constable KODIN is "zone policeman" on the JIMI headquarters; Constable IAMA is at KOL in charge of preparation of the airstrip site for inspection by Department of Civil Aviation.

5. At KOL you will inspect the airstrip site and outline further work to be carried out under supervision of Constable IAMA. Some work has already been done, further work to be undertaken includes:

a) Marking of more diagonal drains throughout the 'strip site's length to enable the site to drain and dry out;

b) Ensuring that the level being achieved will result in a slope of plus several degrees from the approach end.

There are certain natives still occupying land at the approach end of the 'strip site. They are to be allowed to continue to occupy the land until agreement for their removal is reached in discussion with G.I.C. JIMI.

Their gardens are not to be interfered with, at this stage, by ditch and drain-digging associated with 'strip site preparation; nor is any of their standing timber at the approach end of the 'strip site to be felled unless they themselves suggest that it be cut.

Emphasis should be laid on the preparation of the top 900'-1000' of the 'strip site which could, I consider, be made ready for aircraft operation at an early date.

In the light of work done to date on the 'strip site you will, on your return here, record your observations and views on the pro-

/ over

gress of the undertaking, etc..

The people of KOL have borne the brunt of the work on the 'strip site over the past few months. At KOL you can arrange with Const. NODIN and IAMA for the acceptance of the offer of assistance from other headwaters Groups. Groups assembling at HOGINPOL, IANRAMON, BOVULBANKIA, GERAL, KOGLT, MONOON, BWINIRING (MANS), KHEWRA, KED-UNEN and NUBGILB can work at KOL on the 'strip project on a rotation basis; pairing, etc. of the Groups should be left to Constables NODIN and IAMA, who are acquainted with sympathies and antipathies among the headwaters people.

Your work on the 'strip site at KOL should take no more than one day of the two you will spend at KOL.

6. At KOL, in addition to 'strip site inspection, you will undertake the survey of two areas of land sought by the Lutheran Mission as Special and Mission Leases (about 20 acres and 5 acres). You yourself will carry out the survey only of the land. The actual land investigation itself will be conducted by O.I.C. JIMI as soon as possible.

In surveying these two areas of land you should be accompanied by the landowners concerned (record their names and sub-group names for reference). They themselves, without prompting, will no doubt make known to you their desire, or otherwise, to make the land available for alienation. In reply, you can state that this is a matter for discussion between landowners and O.I.C. JIMI.

One point to which you should give particular attention:- Ascertain whether the land sought by the Mission is within that area which, it has been arranged, will be allowed to revert to the natives of KOL when the "KURAMEL-WAN" land is alienated.

7. At KOL you will probably encounter Rev. Junker of the Lutheran Mission, and you may encounter Father MacDermott of the Catholic Mission. You can make it clear to both that you are newly arrived in this area, and that any complaints or requests they may have are to be referred to O.I.C. JIMI.

From Constable NODIN you should be able to learn the recent movements and activities of both Missionaries.


8. Concern yourself only with the two jobs outlined in these instructions: preparation of the airstrip site at KOL and survey of the Lutheran Mission-sought land at KOL.

Do not deal with any native complaints or disputes which are of anything but a trivial nature; issues of any moment are to be referred to O.I.C. JIMI.

9. Regard this trip to KOL and associated work as a patrol. You will submit a Patrol Report on your return to this Post.

10. For background before you leave read:

Patrol Reports held here; JIMI Files 32/2 (Lutheran Mission), 32/4 (Catholic Mission), 2/1 (Airstrips), 29/7 (Progress Reports), 1/6 (Administration and Organisation - Patrol Posts), 34-30 (Land Investigation - "KURAMEL-WAN"), 34/R/57(58) (Land Applications by Lutheran Mission in respect of land at KOL), 25/1 (Trade Stores), and 34/- (local land disputes and agreements recorded).


(B.P. GRIFFIN) P/O
Officer-in-Charge

TERRITORY OF PAPUA & NEW GUINEA

HAR

JIMI Patrol Post,
Mt. Hagen sub-District,
Western Highlands.

20th September, 1958.

The Officer-in-Charge,
JIMI Patrol Post.

JIMI Patrol No. 3 of 1958/59 by
H.A. Richardson, Cadet Patrol Officer

Patrol Personnel: Mr. H.A. Richardson, C.P.O.
Const. KAMUE No. 883, R.P. & T.S.O.
Interpreter NGAND of JIMI Patrol Post.

Area Patrolled: From JIMI Patrol Post through the Upper
JIMI Valley to KOL in the JIMI Headwaters.

Duration of Patrol: From 11th September to 16th September,
1958.

No. of Days: Six days.

Last Patrol by H.A.A.: April-May, 1958. (JIMI P/3 No. 2 - 57/58)
Visit by C.I.C., JIMI Patrol Post in
August, 1958.

Last Medical Patrol: September, 1958. Inspection patrol by
E.M.A., Kerowagi of Kerowagi-staffed Aid-
Posts in the JIMI Headwaters.

Did Medical Assistant
Accompany? No.

Map Reference: Army Strat. & Mls : 1 inch, RAMU Sheet.
Sketch Map attached.

Objects of Patrol: 1. Inspection of airstrip site at KOL in
connection with impending inspection by
D.C.A. personnel.
2. Survey of two areas of land at KOL
applied for by the Lutheran Mission.
Refer also Patrol Instructions - C.I.C.'s.
30/1, 1/6 - 129 of 9th September, 1958,
copy attached.

PATROL DIARYThursday, 11th September, 1958.

Departed TABIBUGA (JIMI Patrol Post) 0920 hrs. in company with the Patrol of Mr. G. Blythe (E.M.A. at Kerowagi, E.H.D.), who was moving TABIBUGA-BANE in completion of an Aid-Post inspection patrol through the JIMI Reservoirs. Arrived KANEM Rest-house 1400 hrs. Const. MANUS (No. 9405) of the Kerowagi E.P. & N.G.C. Detachment accompanied the Patrol. Camped.

Friday, 12th.

Departed MANEMP 0735 hrs. Arrived OLNA Rest-house 0915 hrs. Heard report of two deaths possibly due to dysentery. Advised that an A.P.O. from KOL would investigate on the morrow. Departed OLNA 0940 hrs., arrived MANS (DILBENING) Rest-house 1125 hrs. Inspected two new police-barracks in course of construction under supervision of Const. MODIN (No. 7817) of JIMI Detachment, latter accompanying Patrol to KOL. Departed MANS 1245 hrs., arriving KOL Rest-house 1530 hrs. Inspected Aid-Post. Investigated report of alleged riotous behaviour. Camped.

Saturday, 13th.

A.P.O. GARIAMI, stationed at KOL, departed for OLNA at 0745 hrs. Const. MAEUS of Kerowagi departed KOL 0800 hrs. to return to his Station. Self inspected airstrip site at KOL and outlined further preparatory work to be undertaken by Const. IAMA (No. 7686) of JIMI Detachment. Several minor disputes heard and settled.

Sunday, 14th.

Accompanied by the native owners, surveyed two blocks of land applied for by the Lutheran Mission. Plotted the two areas and calculated Mission block to be 4.96 acres and the Special lease to be 25.37 acres. Owners willing to sell.

Monday, 15th.

Inspected 'strip site again at 0645 hrs. in view of heavy overnight rain. Departed KOL 0825 hrs., arriving OLNA via MANS, at 1245 hrs. Checked on A.P.O.'s action. No further dysentery cases found, but 20 natives sent to KOL Aid-Post for various treatments. Departed OLNA 1330 hrs., arriving MANEMP Rest-house 1513 hrs. Camped.

Tuesday, 16th.

Departed MANEMP 0815 hrs. for TABIBUGA, arriving at the Patrol Post 1245 hrs. Reported to the Officer-in-Charge. Patrol completed.

End of Diary

....

Introduction.

This Patrol was not of the routine type, the two objectives being the inspection of the airstrip site at KOL and the detailing of the next stage of its preparation for inspection by the Dept. of Civil Aviation. Secondly, two areas of land at KOL applied for by the Lutheran Mission were to be surveyed. The attached Patrol Instructions (ref. 30/1, 1/6 - 129 of 3th September, 1958) from the Officer-in-Charge, JIMI Patrol Post, refer.

Report on Preparation of KOL Airstrip Site.

This airstrip site was first inspected by the O-I-C., JIMI Patrol Post in the course of a patrol in the Headwaters early May, 1958. (JIMI River Patrol Report No. 2 - 1957/58).

On August 1st and 2nd, during a visit by the O-I-C., (ref. JIMI Memo. 2/1 - 90 of 5th August, 1958), drains were surveyed and marked out on the 'strip site and basic ground preparation begun. Clearing of the upper or top 900 feet or so had been completed before then.

At the time of my Patrol, the top or south-east half of the site had been cleared of all scrub and pitpit and two side drains running the length of the cleared section were dug. These should be adequate for any amount of run-off. Transverse drains had been put in at regular intervals, with due regard to the ground contours.

At the middle of the site, where pitpit swamp had been, the ground resembles a "peat", and was found to be very soft to a depth of 8 feet in parts. This very soft ground runs across the 'strip (apart from a firm section in the centre), at the base of a low escarpment (which also crosses the 'strip). Now drains are to be put in at 6 foot intervals, but it is doubtful if it will ever provide a good firm base for a runway. As filling will be no problem, it is probable that this peat will have to be dug out and replaced with the red clay type of soil of which the upper section of the site is partly composed. A decision can be expected during the D.C.A. engineer's inspection.

After about 150-200 points of rain on 14-15th September, there was very little surface water, the drains apparently having disposed of the run-off satisfactorily. However, several more drains were made where needed, particularly near the top extremity of the 'strip.

The overall slope from the top to the limit of the cleared area of the 'strip is 4° which is equal to a 7% slope. Pegs marking some of the final levels will probably be put in by the D.C.A. party.

At the approach end of the site, where native houses and gardens still occupy part of the proposed 'strip, no construction work of any sort has been started. Clearing will commence after the O-I-C., JIMI, has reached agreement with the natives concerned with regard to vacating the ground, compensation, etc. At present sufficient work is involved in preparing the ground already cleared.

(continued...)

Report - KOL Airstrip, continued.

The local KOL groups have done most of the work to date, but groups from LEGIRPOL, IAWARAWON, SIBULSANGA, GERAL, KOGLE and MOPORON have now each worked "or at least one week on the 'strip. Other groups from MANS (who have been engaged on new buildings at their Rest-house area) and from FUBURA, KURUNGA and BURGIE are expected to be called in during September. The lines assembling at OLNA have requested to be 'marked' at an early date for work at KOL. The two Constables stationed at KOL are responsible for the pairing off of sympathetic lines, but this system has broken down on one occasion. (Referred to under 'Magisterial').

As groups whose members are domiciled some hours' walk from KOL are now coming in for work, a compound is to be built to accommodate them. This will consist of a number of native-style houses - work was to commence almost immediately. The houses will be located on the north-east side of the 'strip site.

It is considered that a heavy concrete roller will be necessary for final surface preparation. Perhaps consideration could be given to the early requisitioning of cement, sheet-iron for the former, and some 3" water-pipe, when D.C.A. funds become available. Suitable grass-seed too could be considered.

Construction work can be speeded-up when funds become available to purchase some more spades, shovels and saw picks. At present there are 60 spades and shovels being used which were made available from the Patrol Post. This number could advantageously be increased to at least 100, and about 20 picks added to the equipment.

Until the results of the D.C.A. inspection are known, no firm expected date for completion of any stage of the work can reasonably be given. However it is thought that most of the leveling of the full 'strip length could be completed within 4-5 months. With the wet season about to set in, work may be prolonged depending on the reaction of the 'strip site.

End of Report.

(P/C. continued....

Survey of Land Applied for by Lutheran Mission.

The Lutheran Mission of New Guinea has applied for two leases of land at KOL in the JIMI Headwaters. The first is to be a Mission lease and the second a Special lease ("for gardening, grazing cattle, school, etc."). The District Commissioner's 34/B/57-777 (34/S/58) of 27th August, 1958, to the Director, Dept. of Native Affairs, minuted to the O-I-C., JIMI Patrol post, refers.

The land is called in the local language "WAM" and the two blocks, which adjoin one another, have for convenience been named "WAM No. 1" (Mission lease) and "WAM No. 2" (Special lease). Situated about 600 yards south of the KOL Rest-house, the ground is not an integral part of the area on which the Rest-house, police barracks and Aid-Post are built. (Vide para. 6, Patrol Instructions). The Rest-house area it has already been agreed, will revert to the natives for a sing-sing ground when the land "KUR-UMED-WAM" (where the airstrip is sited) is alienated by the Administration.

The two blocks were surveyed, the native owners accompanying myself and indicating the precise boundaries. All corners were marked with hardwood posts. The datum-point is a blazed tree at the junction of the BONGGUR Creek and the Patrol Track from KOL to Kerowagi.

The area of the Mission lease ("WAM No. 1") is calculated to be about 4.96 acres, and the area of the Special lease ("WAM No. 2") about 23.37 acres.

The owners, who are willing to sell, are all members of the big PARA (PAGAU) group as follows:

YOGONS	}	of the AGILIRKA/KOBUNGAN sub-group.
MINGARE		
MAREP		
TAGEP		
KORO		
GISIBE	}	of the AGILIRKA/DANFKAN sub-group.
WANDUGL		

All agreed amongst themselves that the ground is theirs to sell, and there were no dissenters. The boundaries are not in dispute.

The following improvements were noted:

Bananas	-	7 (medium sized)
Maritas	-	3 (medium)
Casuarinas	-	3 (large) 1 (medium) 15 (small)
Various Trees	-	5 (large) 6 (medium)

(continued....)

Survey of Land continued

The valuations to be put on these improvements will be the concern of the O-I-C., JIMI Patrol Post.

There are no houses of value, fences, gardens or other improvements on this land. The one dis-used native house on "WAM No. 1" is valueless.

The owners indicated that in payment for the land, trade items such as axes, knives and laplaps would be much preferred to cash. It is at least a day's walk to the nearest trade-store at Kerowagi, where, with these people's unfamiliarity with money and money's worth, they would probably fare rather poorly.

Details of my surveys of the two blocks of land have been made available to the O-I-C., JIMI, who proposes himself to undertake the land investigations at an early date.

End of Report.

(P/R. continued....

Native Affairs.

The native situation appears satisfactory, with good co-operation from most lines regarding carriers, food supplies and information. Respect for and confidence in the Government and its servants seems to be particularly high.

At KOL, probably partly due to the irregular contacts with Europeans, a large crowd greeted the Patrol with some exuberance. Here, where the Patrol stayed from pm. 12th to am. 15th September, enthusiasm for an Administration post was particularly intense. Certainly if a Station of some sort is established at KOL, there will be every co-operation forthcoming from the people. The O-I-C., JIMI Patrol Post, made strong recommendations regarding the establishment of a Station in this area, especially in view of the airstrip site, in JIMI Patrol Report No. 2 - 57/58.

One common practice was brought to the notice of the Patrol, that of the Iulnais and Iultuls arbitrating in adultery cases and decreeing that exorbitant compensation should be given to the injured party. The O-I-C., JIMI, has previously commented on this in his JIMI P/R. No. 2 - 57/58. The practice has apparently been curbed but by no means has it ceased. The damages awarded are not at all realistic and lead to much discontent. Officials at OLMA were reminded that their settlement of trivial disputes was to be commended, but that over-stepping their responsibilities would result in disciplinary action.

Due to the special objects of this Patrol, other usual patrol items for attention were neglected.

End of section.

(P/R. continued....)

Magisterial.

Const. IAMA at KOL reported to the Patrol that two lines had clashed at the KOL Rest-house area, after a member of one line had insulted the other whilst they were both working on the airstrip. The fight only lasted a couple of minutes before the tultuls present had stopped the fracas. There were no injuries.

The two alleged instigators accompanied the Patrol back to the Station where an account of the incident was given to the C-I-C. The remainder of the men involved (numbering about sixty) will come before the C-I-C. when he escorts the D.C.A. inspection patrol to KOL.

A separate report on this incident has already been forwarded to the C-I-C., JIMI, for his action. The Constable was advised to carefully watch, with due regard to various animosities, the pairing of different groups for airstrip work at KOL.

Several trivial disputes requiring arbitration were satisfactorily settled, and several others possibly requiring Court (of N.A.) attention were referred to the C-I-C. No serious crimes were reported.

Sol of section.

(P/R. continued....)

Medical and Health.

At OLNA, Lulusi ROSE reported that a woman and a child had died some days earlier. As the symptoms suggested dysentery, the second A.P.O. at KOL was despatched to OLNA on Saturday, 13th September, to investigate.

Apparently no further dysentery was discovered, but some 20 natives were taken back to the Aid-Post at KOL for treatment for malaria, scabies, ring-worm, with one suspected case of leprosy for further examination and probable on-forwarding to the native hospital at Kerowagi.

The anomaly of having medical services in the JIMI controlled partly from District Headquarters at Mt. Hagan and partly from Kerowagi in the Eastern Highlands has been the subject of much correspondence and discussion, but still the situation exists, although now with a measure of control emanating from the Patrol Post at TABURGA.

Apart from a number of cases of scabies, very little sickness was apparent. The A.P.O. ARNOLD at KOL can probably be given a good deal of the credit for this. His hospital is clean, well and efficiently operated, and obviously takes most of his attentions.

End of section.

(P/R. continued...)

Education and Missions.

Father J.A. McDermott of the Catholic Mission, is building a mission station at KONGGUM, about 4 hours' walk south-east from KOL. The Mission has as yet no land rights in the Headwaters, nor as far as the G-I-C., JIMI Patrol Post knows, has it made any formal move to acquire land rights in the area. The Mission appears to be operating purely on a "permissive occupancy" basis with or without the goodwill of the KONGGUM natives. Nevertheless, Fr. McDermott is building along surprisingly permanent lines on land to which he has no legal claim.

At KOL, the Mission has a church and a school, at which the Pidgin language is used for instruction. Fr. McDermott states that later English will be introduced. There are three catechist/teachers at KOL.

The Lutheran Mission also has a church and a school at KOL. Should the leases applied for be granted, the Rev. Junker intends opening a new school at which, unfortunately, KOTE will probably be the language used. The KOL people are very anxious to learn Pidgin and English rather than the all but useless KOTE.

However, the Lutherans were the first in at KOL and at present have the greater influence, especially as the Rev. Junker's mission station seems about to eventuate. He himself has not been in the area since "marking" his two leases early in August. A quantity of cargo arrived at KOL for the Mission whilst the Patrol was there.

Fr. McDermott visits his catechists' stations throughout the Headwaters at about monthly intervals, and arrived KOL 13th September.

End of section.

(P/R. continued....)

Roads and Bridges.

The road between TABIEUGA and KOL, via KORENDIU, MANEMP, OLNA and MANS is by graded Patrol track. The road was in very good repair between the Station and MANEMP. From there on occasional lapses occur where rocky ground is encountered. Near OLNA on the MANS side, a section of a very narrow track gave way under the weight of a carrier, who was fortunately not injured by his fall. The responsible Tultul agreed to throw a bridge across the gap - the road will probably have to be re-routed later at this point.

Most bridges were in a satisfactory state. One bridge (over the KWI River) is to be replaced shortly. Although still serviceable, the main bearers need renewing.

Rest-houses.

All rest-houses sighted were in good condition with attendant police-barracks etc. in equally new condition. Most rest-house areas have gardens started, the area at KOL being particularly attractive.

At MANS, two new police-barracks have just been completed, with several out-houses started. At KOL, a new police-barracks was recently completed.

Conclusion.

This Patrol was of short duration (six days) and had only two objectives, both of which were successfully completed.

Comments on "Group Officials" and "Agriculture" have not been included, as owing to the brevity of visits to areas other than KOL, no worthwhile observations could be made.

Appendix 'A' is attached and the relevant Form 1 forwarded to the Commissioner of Police, Port Moresby.

Habit

(H.A. Richardson),
Cadet Patrol Officer

Appendix 'A'.

REPORT - R.P. & K.G.C.

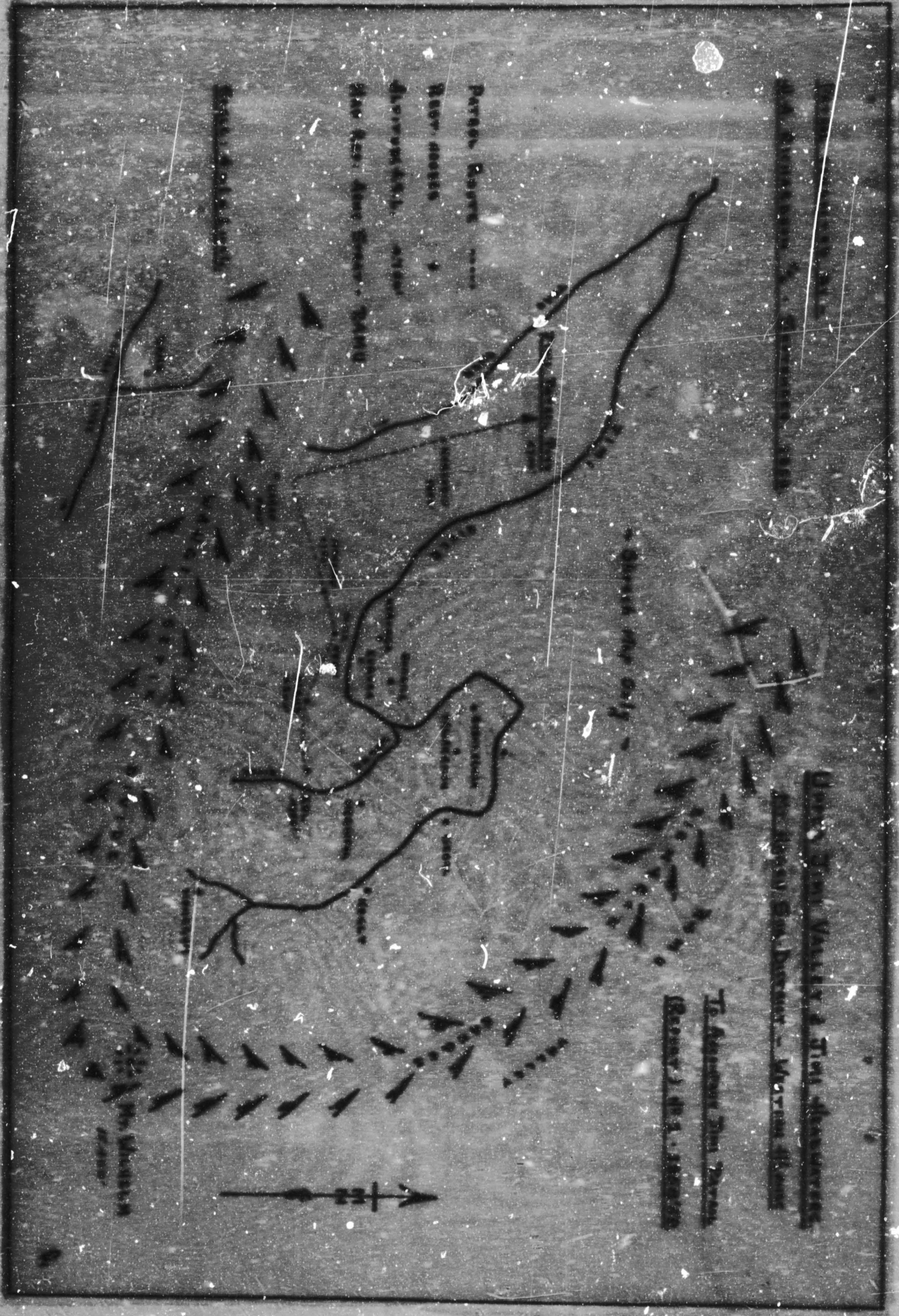
No. 8432 Constable KAMUK

Length of Service: Constable, 5th year
Appearance: Bright and smart
Conduct: Good
General Ability: Works well, is intelligent and resourceful. Fluent in three JIKI languages.

Form I completed and forwarded to the Commissioner of Police, Port Moresby.

Habit, and...

(M.A. Richardson),
Det. Patrol Officer





TERRITORY OF PAPUA AND NEW GUINEA



PATROL REPORT

District of WESTERN HIGHLANDS Report No. Jimi, Raga 2-58/58

Patrol Conducted by B. F. GRIFFIN P/O Camp 2

Area Patrolled Jimi, Hama-waka & Neata Waka Jimi

Patrol Accompanied by Europeans See screen

Native Police: 3-5

Duration - From 5/10/58 to 19/10/58

Number of Days FIFTEEN (15)

Did Medical Assistant Accompany? NO

Last Patrol to Area by - District Services - 19/09/58 (part) (AIR-1-58/58)

Medical ... 19/09/58 (part)

Map Reference Army JTBK - 4 miles: 1 inch - Raga, Jimi

Objects of Patrol: ① Inspection & survey & DESCH KOK

MINSTER. ② ROUTINE ADMINISTRATION

DIRECTOR OF DISTRICT SERVICES
AND NATIVE AFFAIRS,
FORT MORSBY.

Forwarded, please.

19

Bankier
District Officer

Amount Paid for War Damage Compensation ... £ _____

Amount Paid from D.N.E. Trust Fund ... £ _____

Amount Paid from P.E.D.P. Trust Fund ... £ _____

21/10/58

successful during the past two and a half years.

Missions.

The keenness to further mission work in the Jial continued unabated.

Medical and Health.

Some peculiar activity and outbreaks on the part of certain members of Public Health Department residing in the confined population of the confined system of control of all posts in the Upper Jial - no less than three different centres controlling them. These different centres are controlled by Mount Eagen, Maj and Yawangi and Officer, from each place solemnly patrol their own, two or three posts.

The Aid Posts Training School at Mount Eagen still does not meet regularly.

Conclusion.

The patrol was conducted in Mr. Griffin's usual thorough manner and the various items of correspondence mentioned covered adequately every aspect of the work done. Progress in the whole area is a tribute to this officer's work.

(R.L. SKINNER)
District Commissioner

(WH 97) -3137
30/1

Western Highlands District,
District Office,
KORORUA.

9th June, 1959.

Director,
Department Native Affairs,
KORORUA.

PATROL REPORT - JIMI RIVER NO. 2/1958-59 RETURN OFFICERS
R.F. GRIFFIN - JIMI HEADWATERS AND BOKER-FALL.

This patrol was conducted while matters relating to the Jimi River remained under my direct control hence I have prepared these comments.

Kol Aerodrome.

For a number of years it was thought that no suitable site for an aerodrome could be found in the Upper Jimi, but Mr. Griffin finally located two sites which were passed by Civil Aviation inspection parties as being suitable for the construction of aircraft up to category "B" (Hercules and Beaver) type aircraft. (Construction both, Tabibuga and Kol, is now well under way. Tabibuga is expected to be completed during 1959 but completion of Kol may be delayed until a second suitable officer is available for the Jimi Post.

Native Affairs.

As long as Missionaries outnumber Field Staff by two or three to one - usually the minimum encountered - it will be difficult for the latter to keep themselves as constantly in the indigenous eye as can the more numerous evangelists of various faiths. Thus, quality must make up for quantity if the Administration is to retain its rightful position of prestige. This should always be taken into account when allocating staff to new areas.

It may be desirable for a few more Highland police to be recruited if only for the satisfaction of backward areas such as this.

Magisterial.

I do not think that any significance should be read into the use of capitals in the word "FOUR" but many local people feel that our punishments for homicide are insufficient.

Village Officials.

The Tabibuga Academy for Village Officials has proved

successful during the past two and a half years.

Finance.

The business to further Mexican work in the Jint continues unabated.

Medical and Health.

Some peculiar obscurity and delay on the part of certain members of Public Health Department results in the continued perpetuation of the confused system of control of all parts in the Jint - at least three different systems controlling them. These different Jint parts are controlled by Saint Diego, Jint and Kansas and officers from each place naturally patrol their own, two or three parts.

The Jint Parts Training School at Saint Diego will also not need curative.

Continued.

The patrol was conducted in St. Griffith's ward through manner and the various items of correspondence mentioned several adequately very expert of the work done. Progress in the Jint area is a tribute to this officer's work.



(A. J. SMITH)
District Superintendent

Federal OFFICE A.P. GIBBS

Department of Justice - FBI Federal Post

United States District - Eastern District District

1938 To present of Company Accounts -
- Single Entries -

October 3 record of 15 days' duration 9-12/1938

Company record 9-12/1938

October 12 - 15 days - 1938 per day

How much money was there
on 9-12/38 - FBI Records

Smith

Huber

REPORT SUMMARY

Introduction

The Patrol was of a strictly routine nature, apart from the inspection and survey of the AGL airstrip site.

A patrol of such the same kind was conducted in this Headquarters area in April-May this year and in the Report on that patrol (JIMI River No. 2 - 57/58) comments were submitted which still largely apply. For that reason, comments in this Report Summary are brief, except where changed circumstances call for fuller discussion.

AIRSTRIP SITE AT AGL - Inspection and survey and design by District Airport Inspector, Madang.

Inspection and survey of the airstrip site at AGL by District Airport Inspector of Madang, Mr. R.N. Unger, was one object of the patrol.

This airstrip site was first brought to the notice of the District Commissioner in my P/M JIMI River 2 - 1957/58 (April-May, 1958), not discussed later in various memoranda between District Commissioner, Hagen, and O.I.C., JIMI.

The Department of Civil Aviation party of inspection (D.C.A., Madang, Mr. R.N. Unger, and chairman Mr. G. Pi Colombe), having inspected and surveyed and pegged the strip site at KIBIBOGA (JIMI Patrol Post) (JIMI memo. 2/4 - 49 of 4/4/58, 2/1 - 75 of 30/3/58, inter alia, refer), was escorted to AGL (JIMI Headquarters) to carry out similar work there on the land "KURANEL-KAN".

Over the period 7-10/10/58, the D.C.A. party surveyed the AGL strip site earlier selected in the course of my patrol JIMI river 2 of 57/58, and designed and pegged an airstrip with the dimensions given below:

Length	:	1,650 feet
Width	:	150 feet
Slope:	:	5.5 % overall
Bearing	:	115 degrees magnetic
Altitude	:	5,025 feet approximately
Surface	:	(eventually) clay and grass
Operation	:	one-way

The strip will, when completed, take "Boreman" aircraft.

Specifications prepared by D.C.A. are held at JIMI Patrol Post.

/over...

(A later, post-patrol, development in respect of both the TABISUA and KOL airstrips has been the visit of a second R.C.A. party - airport engineer Mr. J.R. Baker and chairman Mr. G.F. Calambet, from Port Moresby - in November to amend the design of both strips. The amendments are to our advantage in construction and will entail considerably less work than had been originally anticipated.

(i) In respect of the TABISUA strip:-

Signs has been increased, and its parts will be as small as 10.3%.

Clearances have been reduced by an estimated 30%, and lateral cuts and clearances drastically reduced.

The amended design may well mean a saving of 5 months in strip construction. Capacity and performance of the strip will still be to "Norman" standard.

Diagrams and details of the amended strip design are held at JINI Patrol Post (ref. my 2/1-176 of 26.11.56 to District Commissioner - minute on airport engineer's memo. to C.I.O., 21.11.56).

(ii) In respect of the KOL strip:-

Similar details and comparable comments in slope and general design, with ultimate strip performance and capacity to "Norman" standard.

Diagrams and details of the amended design will be forwarded from R.C.A., Moresby when ready.)

For further remarks in brief on both TABISUA and KOL airstrips, refer my Quarterly Progress Report 29/7 (1/6) - 167 of 30/10/55.

My Report 34-30/54 of 17.5.58, covers land investigation of "Almash-kan", on which the KOL airstrip site is located.

Allotment of this land has not yet been effected, though action to this end is believed to be likely at an early date.

Though the KOL airstrip has now been surveyed and pegged by R.C.A., work on its construction has not yet been carried much beyond the basic ground-clearing and draining stage, outlined in Mr. G.W.O. Richardson's P/A JINI River 1 - 58/55. My own view is that the work will require the full-time supervision of a European, if it is to be properly carried-out; and, unless an instruction to the contrary is received from District Headquarters, work on the KOL strip will not begin in earnest before R.C.A. JINI staff establishment will provide a European supervisor for each of the TABISUA and KOL airstrips.

/over....

LAND INVESTIGATION

"Wak No. 1" and "Wak No. 2" - Mission and Special Lease applications at KOL - Lutheran Mission New Guinea.

By direction of the District Commissioner (minutes of 27/8/58 to C.I.O., JIMI, on the District Commissioner's 30/8/57 (58) - 777 of 27/8/58 to the Director of Native Affairs) an investigation was carried out on 8/10/58 into the alienability of native-owned land at KOL, sought by the Lutheran Mission New Guinea as Mission and Special Leases.

A Land Investigation Report P/R/57(58) - 161 of 26/10/58 in respect of the Mission-sought land ("Wak No. 1" and "Wak No. 2" - Mission and Special Lease applications for 4.96 and 23.37 acres respectively) was prepared and submitted to the District Commissioner on completion of the patrol. Native land-owners' attitude to alienation is favourable.

Groundwork in respect of the "Wak" land (survey and discussion with native owners) has been undertaken by Mr. C.F.O. Richardson in the course of his patrol JIMI River - 52/59 in September, and the useful information he offered in the Report covering that patrol proved to be of assistance in my own investigation. A check showed Mr. Richardson's survey to be accurate, and the sketch plans and locality sketches he had prepared (twenty in all) were submitted with my Land Investigation Report P/R/57 (58) - 161.

NATIVE OPINION

These matters have been thoroughly enough dealt with in Reports covering the lately frequent patrols into the headwaters.

(1) A point which has been made more than once, and is worth making yet again, is that it is highly desirable that administration influence should make itself constantly and more effectively felt in the headwaters in order that the Administration might at the very least break even with the Missions (Lutheran and Catholic) who are currently very active there.

This point was made in the Summary to P/R JIMI River 2 - 57/58 and noted in the District Commissioner's comments 30/1 - 1242 of 30/9/58.

(11) Enthusiasm still runs high among headwaters people in the matter of construction of the airstrip at KOL. Now that D.C.A. survey and design of the 'strip' have been carried out, and as soon as JIMI D.N.A. staff establishment will permit the work of 'strip' construction to be got under way, the people can expect to be given the opportunity to work off some of their enthusiasm over the 6-9 months it will take to build the 'strip.'

/over...

(iii) Enquiries were received in the course of the patrol from men who declared themselves willing to be recruited for the Royal Papua and New Guinea Constabulary.

As far as I know, recruiting of Highland natives for R.P. & N.G.C. has been drastically cut or quite discontinued. However, the engineers were told that their requests would be borne in mind.

REGISTRARIAL

(a) Heard in the course of the patrol:-

(1) In the Court for Native Affairs:

One (1) case at FOGHAB - proceedings under Regulation 34(2) of the N.A.R's, for casual intercourse with a married native. Conviction recorded, with a sentence of two months' I.R.L. at JUNI Patrol Post. (Case 74 - JUNI Court Register folio 9856).

(ii) Several complaints and disputes, mainly concerning debts owing, which were satisfactorily settled following discussion among assembled parties to the disputes.

(b) Police investigation into alleged unlawful killing

A Police investigation was conducted at SUNDALINA on 23/10/58 into the alleged unlawful killing of TARR (vicinity of BUSH-SANSA) of male native ANOHA by male native TARR on/about 10/8/58.

Investigation Report 11/3 - 151 of 22/10/58 and background Report 11/3 - 156 of 24/10/58, forwarded to District Headquarters, refer.

(Outcome of the incident alleged was the conviction of TARR at the November sittings of the Supreme Court in Mount Hagen, when TARR was found guilty of murder and sentenced to imprisonment with hard labour for FOUR years (ref. A.D.O., Hagen's 11/6 - 1700 of 20/11/58).

VILLAGE OFFICIALS

The performance of most officials in the area continues to be as satisfactory as might reasonably be expected.

In the case of the few officials who were found to be performing less than adequately, a class was arranged at the JUNI "School" for Lalais and Taitals for a period of two weeks following the patrol. Those selected for attendance at this refresher course appear to have benefited from the coaching they

/over....

checked in their obligations and authority, and their post-graduate contact has been quite satisfactory.

GENERAL REMARKS

The general patrol route which was followed through the area of the patrol was found to be in quite satisfactory condition.

The same comments in regard to the JIM crossings between HUKKAMUKA and HUKKAMUKA and HUKKAMUKA were in good order.

GENERAL REMARKS

(1) HUKKAMUKA

The position was visited on 2/3/52 and 2/4/52. The situation remains much as it was, and it is to be noted here by the way of original contact.

(2) HUKKAMUKA

of Lutheran Mission

It appears now that the Lutheran Mission intends to concentrate its efforts in the JIM area, and not quite clear from its interest in land in the HUKKAMUKA area where, in the course of JIM River patrol No. 2 - 27/52, land investigations were conducted in respect of "GUM" following Mission applications for Mission and Special license there.

The land investigation carried out at HUKKAMUKA in the interests of the Lutheran Mission is covered in this Report Summary under heading "Land Investigation".

Lutheran Mission activity in the HUKKAMUKA and HUKKAMUKA JIM has been covered in G.L.O. Richardson's JIM River 4 - 24/52, and in G.L.O. JIM's Memoranda 32/2 (32/5) - 110 of 25/2/52, 32/2 (1/6) - 157 of 24/10/52, and 32/2 (32/5) - 100 of 1/12/52.

Lutheran Mission strengths in the area potential are HUKKAMUKA and HUKKAMUKA, with the colour of JIM yet to emerge. The influence seems off towards HUKKAMUKA and is felt not at all beyond HUKKAMUKA.

(3) Catholic Mission:

Father McDermott of the Catholic Mission came from

/GUM....

... to ... during my stay there, in order to discuss matters affecting both the Administration and his Mission.

The only matters raised by Fr. McDermott were those which had already been dealt with in correspondence between himself and myself: discipline, travel charges and mission income. These matters were covered in my earlier O/A dated 1-1-58.

... matters raised by Fr. McDermott were those which had already been dealt with in correspondence between himself and myself: discipline, travel charges and mission income. These matters were covered in my earlier O/A dated 1-1-58.

... the ...

... matters raised by Fr. McDermott were those which had already been dealt with in correspondence between himself and myself: discipline, travel charges and mission income. These matters were covered in my earlier O/A dated 1-1-58.

... matters raised by Fr. McDermott were those which had already been dealt with in correspondence between himself and myself: discipline, travel charges and mission income. These matters were covered in my earlier O/A dated 1-1-58.

Furthermore, the latest information from ... regarding ... of 10/2/58 ...

[Handwritten Signature]

(A.P. ...)
...
...

(Page 7)

LA 100-111-100-2-500

JULI Henderson & North Hill
A.P. 10/10/52
October - 1952

MEMORANDUM

The subject was pretty well covered in my report
JULI 100-111-100-2-500, and in earlier reports.

Though on this matter has not changed the
character of the JULI, it is felt that, in the
future JULI, requests should be made as possible
and referred to Missy West (100-111-100-2-500)
by the 12/1 - 12/1 of 1/10/52.

As with the JULI and the character of the
subject as covered in previous reports (100-111-100-2-500)
and other reports, it is considered that the
information has been covered in a similar way
from JULI report, and it is felt that the
same was obtained in other reports and that
no change should be made in the character of the
subject as covered in previous reports.

At the same time, the provisions regarding
JULI 100-111-100-2-500 with regard to
the subject.



JULI
100-111-100-2-500

TERRITORY OF PAPUA & NEW GUINEA

JIMI Patrol Post,
Mount Kagen Sub-District,
Eastern Highlands.

Patrol Report: JIMI River No. 2 - 1958/59

Report of a Patrol from JIMI Patrol Post through the JIMI
Headwaters and North Wall JIMI.

- Subjects of Patrol: 1. Inspection with Dept. of Civil As-
sistance party of airstrip site at HGL
(JIMI Headwaters); and survey and
design of strip.
2. Routine Administration.

Personnel of Patrol: A.P. Griffin, Patrol Officer, Grade 3.

Part-time:

E.A. Richardson, Cadet Patrol Officer
R.R. Tager, District Air Post Inspector,
G.P. Colonel, Chairman, D.C.A.

Police Accompany-
ing:

No. 9832 Constable FEMUS
No. 9880 Constable MAKI
No. 9865 Constable OIYA

Part-time:

No. 7847 Constable BOLAN
No. 7836 Constable IAKA

Interpreter:

BOSINGA of OIYA

Period of Patrol:

October 5 - October 19 / 1958.
(15 days)

Map References:

Army Strat. Map, 1:50,000 scale
RAMU Sheet.

PATROL DIARY

Introduction

Movement from JIMI Patrol Post to KOL was by most direct route open to us. Following completion of their work on the airstrip site at KOL, the Dept. of Civil Aviation party proceeded with C.P.O. E.A. Richardson to KROVAGI, while I patrolled via Headwaters and Upper JIMI some grounds back to JIMI Patrol Post.

Movement throughout the patrol was entirely on foot, by graded patrol roads.

Retained information on the route followed is available in earlier reports submitted from JIMI Patrol Post.

Sunday October 5 / 1958

JIMI Patrol Post (4,700') - 1 hr 15 mins. - KOLENDI (5,350') - 2 hrs 30 mins. - KARAP turn-off - 1 hr 30 mins. - MANEMP (4,750').

Moved with Messrs Unger and Colombet (both of D.C.A.) through KOLENDI and overnight MANEMP.

Monday October 6 / 1958

MANEMP (4,750') - 2 hrs 15 mins. - OLNA (5,550') - 1 hr 45 mins. - WANS (4,300') - 2 hrs 45 mins. - KOL (4,750').

Crossed WANS/WALNE Divide at 6,000'. Arrived KOL 4.30 pm. Constables BODIN and LAKA at KOL.

Tuesday October 7 / 1958

At KOL. Despatched Constable IAMA to MANEMP to bring on C.P.O. Richardson. Self to 'strip site with D.C.A. party. Survey, etc. of 'strip site.

Wednesday October 8 / 1958

At KOL. Land investigation "WAK" - Lutheran Mission applications for Special and Mission Leases.

Various work associated with airstrip site survey.

Thursday October 9 / 1958

At KOL. Sundry disputes and courts.

2.30 pm Cadet Richardson in from JIMI Patrol Post (having overnights at MANEMP).

Father J. McDermott (R.C. Mission) in from KONGGUM.

Friday October 10 / 1958

Disputes and discussions with natives. Airstrip design discussed with D.C.A. party. At KOL.

/over..

Saturday October 11 / 1958

FOL (4,750') - 45 mins. - WALLE River crossing -
1 hr - MBGIMPOL (5,300').

D.C.A. Party with C.P.O. Richardson moved 8.30 am.
from FOL to KEROVANI.

Half with patrol to MBGIMPOL. Discussions, etc.

Sunday October 12 / 1958

MBGIMPOL (5,300') - 3 hrs - BUBUSANGA (5,425').

From MBGIMPOL (5,300') at 7.45 am. down 45 mins. to
HANE Creek (3,900') then up to Divide at 4,400' then down to
BENTS Creek (4,150') at 9 am. then up to Divide (5,100'), down
to YAF Creek (4,500') at 10 am., up to Divide (5,300') at 10.45
am. and 5 mins. down to BUBUSANGA (5,425').

Discussions, etc.

Monday October 13 / 1958

At BUBUSANGA. Police investigation into alleged
unlawful killing at nearby ONWA.

Constable IARA in from KEROVANI (escort duty).

Tuesday October 14 / 1958

BUBUSANGA (5,425') - 1 hr 15 mins. - JEMI Crossing
(3,200') - 1 hr 15 mins. - BUBGILE (5,400').

Moved to BUBGILE (KEMA Group). Discussions and
disputes. Remained overnight.

Wednesday October 15 / 1958

BUBGILE (5,400') - 2 hrs 35 mins. - KUBENJAL (5,300').

From BUBGILE down 40 mins. to KOBAS Creek (3,900'),
up 40 mins. to KUBENA turn-off (5,100'), then 1 hr 15 mins.
mainly by ridge road to KUBONGA (5,300') (KIBINGA Group). Dis-
cussions, etc.

Thursday October 16 / 1958

KUBONGA (5,300') - 1 hr 30 mins. - MGINI (5,300').

Moved via KZIU Creek to MGINI (YAGISIKA Group).
Discussions etc.

Friday October 17 / 1958

MGINI (5,300') - 40 mins. - HANE Creek (4,150') -
1 hr 5 mins. - XORION (4,900').

To XORION (OGOKA Group). Discussions, etc.

Saturday October 18 / 1958

XORION (4,900') - 1 hr - RO and HAKU Creeks (about
3,100') - 1 hr 15 mins. - KVIOP (5,000').

/over..

Saturday October 18 / 1958 continued...

To KWIOP (MANGA Group). Picked-up Constable BICL
(some policeman) on route. Discussions, etc. at KWIOP.

Sunday October 19 / 1958

KWIOP (5,000') - 50 mins. - TOGBAR (4,700') - 1 hr
30 mins. - JIMI Crossing (2,000') - 2 hrs 15 mins. - JIMI Patrol
Post (4,700').

To JIMI Patrol Post. Discussions and G.H.A. at
TOGBAR en route.

End of Diary.

PATROL REPORT SUMMARY

Introduction

The Patrol was of a strictly routine nature, apart from the inspection and survey of the KOL airstrip site.

A patrol of much the same kind was conducted in this headwaters area in April-May this year and in the Report on that patrol (JIMI River No. 2 - 51/58) comments were submitted which still largely apply. For that reason, comments in this Report Summary are brief, except where changed circumstances call for fuller discussion.

AIRSTRIPE SITE AT KOL - Inspection and survey and design by District Airport Inspector, Madang.

Inspection and survey of the airstrip site at KOL by District Airport Inspector of Madang, Mr. R.R. Unger, was one object of the patrol.

This airstrip site was first brought to the notice of the District Commissioner in my P/R JIMI River 2 - 1957/58 (April-May, 1958), and discussed later in various memoranda between District Commissioner, Madang, and C.I.C., JIMI.

The Department of Civil Aviation party of Inspection (D.A.I., Madang, Mr. R.R. Unger, and coadjutor Mr. G.F. Colombert), having inspected and surveyed and pegged the 'strip site at TABIBUGA (JIMI Patrol Post) (JIMI memo. 2/1 - 49 of 4/4/58, 2/1 - 75 of 30/5/58, inter alia, refer), was escorted to KOL (JIMI Headwaters) to carry out similar work there on the land "KURANEL-WAR".

Over the period 7-10/10/58, the D.C.A. party surveyed the KOL 'strip site earlier selected in the course of my patrol JIMI River 2 of 57/58, and designed and pegged an airstrip with the dimensions given below:

Length	:	1,650 feet
Width	:	150 feet
Slope:	:	5.5% overall
Bearing	:	148 degrees magnetic
Altitude	:	5,225 feet approximately
Surface	:	(Eventually) clay and grass
Operation	:	One-way

The 'strip will, when completed, take "Horseshoe" aircraft.

Specifications prepared by D.A.I. are held at JIMI Patrol Post.

/over....

(A later, post-patrol, development in respect of both the TABIBUGA and KOL airstrips has been the visit of a second D.C.A. party - Airport Engineer Mr. J.R. Baker and chairman Mr. G.P. Colombet, from Port Moresby - in November to amend the designs of both 'strips. The amendments are to our advantage in construction and will entail considerably less work than had been originally anticipated.

(i) In respect of the TABIBUGA 'strip:-

Slope has been increased, and in parts will be as much as 10.5%.

Earthworks have been reduced by an estimated 30%, and lateral cuts and clearances drastically reduced.

The amended design may well mean a saving of 3 months in 'strip construction. Capacity and performance of the 'strip will still be to "Horseman" standard.

Diagram and details of the amended 'strip design are held at JIMI Patrol Post (ref. by 2/1-176 of 26.11.58 to District Commissioner - minute on Airport Engineer's memo. to C.L.C., JIMI).

(ii) In respect of the KOL 'strip:-

Similar drastic and favourable amendments in slope and general design, with ultimate 'strip performance and capacity to "Horseman" standard.

Diagram and details of the amended design will be forwarded from D.C.A., Moresby, when ready.)

For further remarks in brief on both TABIBUGA and KOL airstrips, refer my Quarterly Progress Report 29/7 (1/6) - 167 of 30/10/58.

My Report 54-30/64 of 17.5.58, covers Land Investigation of "KURAMEL-7AM", on which the KOL airstrip site is located.

Alienation of this land has not yet been effected, though action to this end is believed to be likely at an early date.

Though the KOL airstrip has now been surveyed and pegged by D.C.A., work on its construction has not yet been carried much beyond the basic ground-clearing and draining stage, outlined in Mr. C.P.C. Richardson's P/R JIMI River 1 - 58/59. My own view is that the work will require the full-time supervision of a European, if it is to be properly carried-out; and, unless an instruction to the contrary is received from District Headquarters, work on the KOL 'strip will not begin in earnest before D.N.A. JIMI staff establishment will provide a European supervisor for each of the TABIBUGA and KOL airstrips.

/over....

LAND INVESTIGATIONS"WAK No. 1" and "WAK No. 2" - Mission and Special Lease Applications at KOL - Lutheran Mission New Guinea.

By direction of the District Commissioner (minute of 27/8/58 to C.I.C., JIMI, on the District Commissioner's 34/8/57 (58) - 777 of 27/8/58 to the Director of Native Affairs) an investigation was carried out on 8/10/58 into the alienability of native-owned land at KOL, sought by the Lutheran Mission New Guinea as Mission and Special Leases.

A Land Investigation Report 34/B/57(58) - 161 of 24/10/58 in respect of the mission-sought land ("WAK No. 1" and "WAK No. 2" - Mission and Special Lease applications for 4.94 and 25.37 acres respectively) was prepared and submitted to the District Commissioner on completion of the patrol. Native land-owners' attitude to alienation is favourable.

Groundwork in respect of the "WAK" land (survey and discussion with native owners) had been undertaken by Mr. C.P.O. Richardson in the course of his patrol JIMI River 1 - 58/58 in September, and the useful information he offered in the Report covering that patrol proved to be of assistance in my own investigation. A check showed Mr. Richardson's survey to be accurate, and the Sketch Plans and Locality Sketches he had prepared (twenty in all) were submitted with my Land Investigation Report 34/B/57 (58) - 161.

NATIVE AFFAIRS

These matters have been thoroughly enough dealt with in Reports covering the lately frequent patrols into the headwaters.

(1) A point which has been made more than once, and is worth making yet again, is that it is highly desirable that Administration influence should make itself constantly and more effectively felt in the headwaters in order that the Administration might at the very least break even with the Missions (Lutheran and Catholic) who are currently very active there.

The point was made in the Summary to P/R JIMI River 2 - 57/58 and noted in the District Commissioner's comments 30/1 - 1242 of 10/9/58.

(11) Enthusiasm still runs high among headwaters people in the matter of construction of the airstrip at KOL. Now that B.C.A. survey and design of the 'strip' have been carried out, and as soon as JIMI B.C.A. staff establishment will permit the work of 'strip' construction to be got under way, the people can expect to be given the opportunity to work off some of their enthusiasm over the 6-9 months it will take to build the 'strip.'

over...

(iii) Enquiries were received in the course of the patrol from men who declared themselves willing to be recruited for the Royal Papua and New Guinea Constabulary.

As far as I know, recruiting of Highland natives for R.P. & N.G.C. has been drastically cut or quite discontinued. However, the enquirers were told that their requests would be borne in mind.

MAGISTERIAL

(a) Heard in the course of the patrol:-

(1) In the Court for Native Affairs:

One (1) case at TOGBAN - proceedings under Regulation 84(2) of the N.A.A.'s, for sexual intercourse with a married native. Conviction recorded, with a sentence of Two Months' I.M.D. at JIMI Patrol Post. (Case 74 - JIMI Court Register folio 9838).

(ii) Sundry complaints and disputes, mainly concerning debts owing, which were satisfactorily settled following discussion among assembled parties to the disputes.

(b) Police Investigation into alleged Unlawful Killing

A Police investigation was conducted at BUBULSANGA on 13/10/58 into the alleged unlawful killing at OMER (vicinity of BUBULSANGA) of male native LORWIS by male native TSER on/about 10/3/58.

Investigation Report 11/3 - 151 of 22/10/58 and Background Report 11/3 - 156 of 24/10/58, forwarded to District Headquarters, refer.

(Outcome of the incident alleged was the conviction of TSER at the November sittings of the Supreme Court in Mount Hagen, when TSER was found guilty of murder and sentenced to imprisonment with hard labour for FOUR years (ref. A.D.O., Hagen's 11/0 - 1700 of 20/11/58).

VILLAGE OFFICIALS

The performance of most Officials in the area continues to be as satisfactory as might reasonably be expected.

In the case of the few Officials who were found to be performing less than adequately, a class was arranged at the JIMI "School" for Lukwais and Taituls for a period of two weeks following the patrol. Those selected for attendance at this refresher course appear to have benefited from the coaching they

/over....

received in their obligations and authority, and their post-graduate contact has been quite satisfactory.

ROADS AND BRIDGES

The graded patrol roads which were followed throughout the whole of the patrol were found to be in quite satisfactory condition.

The cane suspension bridges at the JIMI crossings between BOBULSANGA-and-SUBGILE and TOGHAN-and-YABISOGA were in good order.

EDUCATION AND MISSIONS

(i) Education

The position was outlined in my P/R JIMI River 2 - 57/58. The situation remains much as it was, and little can be added here by the way of original comment.

(ii) Missions

(a) Lutheran Mission:

It appears now that the Lutheran Mission intends to concentrate its efforts in the KOL area, and has quite withdrawn its interest in land in the MANS area where, in the course of JIMI River Patrol No. 2 - 57/58, land investigations were conducted in respect of "KUBO" following Mission applications for Mission and Special Leases there.

The Land Investigation carried out at KOL in the interests of the Lutheran Mission is covered in this Report Summary under heading "Land Investigation".

Lutheran Mission activity in the headwaters, and Upper JIMI has been covered in G.P.O. Richardson's P/R JIMI River 1 - 58/59, and in G.I.C. JIMI's memoranda 52/2 (52/4) - 110 of 25/8/58, 52/2 (1/6) - 157 of 24/10/58, and 52/2 (32/4) - 180 of 3/12/58.

Lutheran Mission strongholds in the area patrolled are BOBULSANGA and MANS, with the colour of KOL yet to emerge. The influence eases off towards KWANGGA and is felt not at all beyond KWIGP.

(b) Catholic Mission:

Father McDermott of the Catholic Mission came from

/over....

MEMORANDUM to HQ. During my stay there, in order to discuss matters affecting both the Administration and his Mission.

The only matters raised by Fr. Moberg were those which had already been dealt with in correspondence between himself and myself: airstrips, trade stores and missions. These matters were covered in my earlier P/R JIMI River 1 - 57/58.

Latest Catholic Mission activity in the area patrolled is dealt with at length in Mr. Richardson's P/R JIMI River 1 - 55/59, C.I.C. JIMI's 12/2 (12/4) - 1st of 25/2/58, 1st of 31/1 - 1st of 21/12/58, 32/4 - 1st and 1st of 2/11/58, and 37/2 (38/2) - 1st of 5/12/58.

MISSIONS AND AID POST

(1) The Aid Post set-up has been discussed, and its status ascertained. Details given without detail.

(2) Enquiries were made by a number of natives wanting to be trained as Aid Post orderlies.

Recruits to P.R. over the past couple of years have earned themselves poor reputations, and are now recovered in their training.

Furthermore, the latest information from Aid Post Training School Instructor at Mount Hagen (in his R. 2-3-5/57-58 of 18/3/58) was that applicants for Training School could be accepted for some time, but that cases might be called forward "as occasion offers". As no further word has been received from P.R.S., Hagen, it would appear that occasion has not offered to date.

(B.P. Griffin)
Patrol Officer
Grade 2.

P/R continued over....

(Page 7).

P/R JIMI River No. 2 - 58/58

JIMI Headquarters & North West JIMI
A.P. Griffin, P/O 2
October - 1958.

AGRICULTURE

The subject was pretty well covered in my Patrol Report JIMI River 2 - 57/58, and in earlier Reports.

Though no firm pattern has yet emerged for economic development of the JIMI, it is felt that, in the headquarters and Upper JIMI, emphasis should be laid on peanuts, passionfruit and potatoes as likely cash crops (ref. my 17/1 - 176 of 28/11/58, and my 17/1 - 176 of 1/12/58).

As both the TABIDUGA and KOL airstrips can now be regarded as certain to be available within 12-15 months, outlets for native produce might be considered assured. Extensive work in agriculture has been carried on in a small way by post patrols from JIMI Patrol Base, but it is felt that this work could receive more attention in future than it has done to date, as that advantage might be taken at the outset of the availability of backloads on aircraft out of TABIDUGA and KOL.

At the same time, the precautions suggested in C.I.C. JIMI's 17/1 - 176 of 28/11/58 with regard to erosion, etc., are to be noted.



A.P. Griffin
P/O 2

Report on Police Accompanying Patrol

<u>Reg. No.</u>	<u>Rank</u>	<u>Name</u>	<u>Conduct</u>	<u>Comments</u>
8532	Constable	KAMUN	Satisfactory	Capable and intelligent policeman.
9880	Constable	HARI	Satisfactory	Young and Promising.
9865	Constable	CIYA	Fair	Not likely to amount to much.

Part Two

7817	Constable	BODIN	Satisfactory	Keen enough. Ability average.
7856	Constable	IAMA	Satisfactory	Average.

Form 1 in respect of the members accompanying the Patrol forwarded to Police Headquarters.


P.O. Griffith P/O.

Harbor Report Alton River No. 2 - 5839

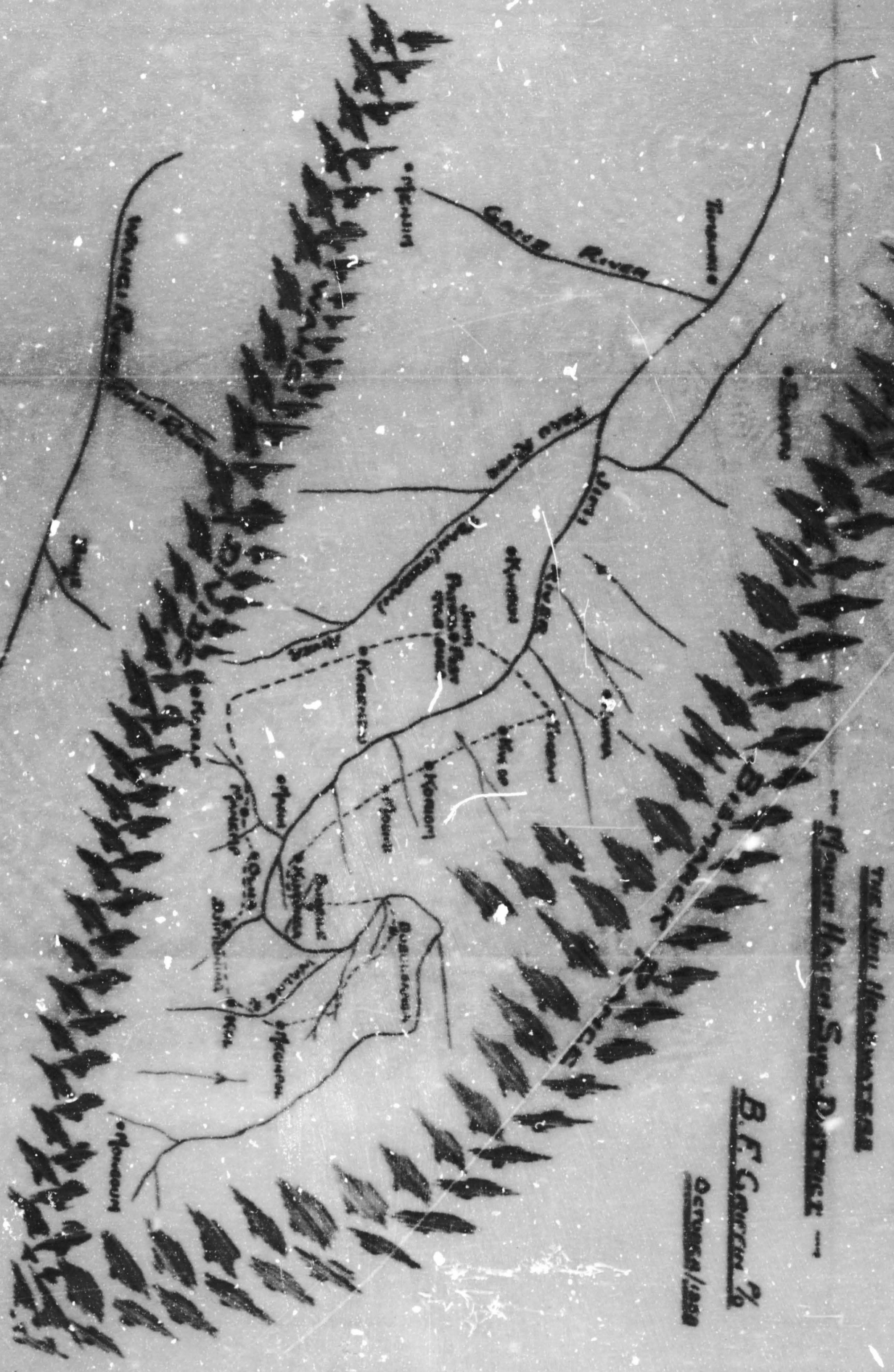
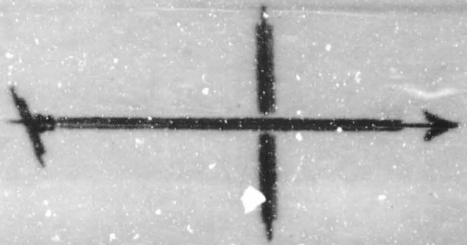
From mouth of the Alton River and

The Alton Harbors

Mount Haven Survey District

B. F. Garcia

Surveyor



© 1914

Survey Done
Scale: 4 miles to 1 inch
See Also Survey Records

Alton River of the Alton & Harbors
Survey Route 1

B. F. Garcia



TERRITORY OF PAPUA AND NEW GUINEA

PATROL REPORT

District of Western Highlands, T.N.G. Report No. JDM No. 4 - 1951/52.

Patrol Conducted by H.A. Richardson, Joint Patrol Officer.

Area Patrolled Headwaters of the JDM Valley, Hagen Sub-District.

Patrol Accompanied by Europeans NIL.

Natives Police - 4; Interpreters - 2.

Duration - From 11/ 2 /19 50 to 25/ 3 /19 50

Number of Days Forty-three days.

Did Medical Assistant Accompany? No.

Last Patrol to Area by - District Services / 20 /19 50 - JDM Patrol No. 2 - 50/50

Medical ... / 9 /19 50 - L.M.A., P.H.D., Hagen

Map Reference Army Strat. 4 miles : 1 inch. NAGI Sheet. Sketch map attached.

Objects of Patrol 1. Census revision; 2. Supervision KIL electricity construction;

3. Estab. & develop KIL Rest-house area; 4. Land Investigations; 5. Routine.

DIRECTOR OF DISTRICT SERVICES
AND NATIVE AFFAIRS,
PORT MORESBY.

Forwarded, please.

/ 19

District Commissioner

Amount Paid for War Damage Compensation ... £

Amount Paid from D.N.E. Trust Fund ... £

Amount Paid from P.E.D.P. Trust Fund ... £

30-17-61.

~~XXXXXXXX~~
Knodobu.

3rd June, 1959.

The District Officer,
Western Highlands District,
MOUNT HAGEN.

PATROL REPORT JIMI NO. 4 - 1958/59.

Reference your 30/1-2832 of 26th April, 1959.

Mr. Richardson appears to have conducted a good patrol and has reported well.

The native situation seems satisfactory. Mr. Richardson should not be impatient at the difficulties encountered in sorting out native place names and group relationships. Interpretation difficulties, the peoples' lack of precise knowledge of our requirements, their timidity and confusion when first confronted with our processes, and - at times - ignorance of officers all tend to make such difficulties inevitable even when there is no intent to mislead. The officers concerned have done well to get the matter straightened out as well as they have at this stage.

Do not force the pace of economic development beyond your capacity to deal with it: - the staff shortage is unlikely to be overcome for some time yet.

A good start has been made on the Kol airstrip, and I am glad to note that you are ensuring that the officer maintains a proper balance between airstrip work and the people's own needs. The information has been passed to the Department of Public Works; in future where such action is likely to be required, would you arrange for a second copy to be supplied.

In the land matters dealt with, there seems to have been extraordinary discrepancies between the areas as applied for and as determined by the survey. It might also be noted that the area of a mission lease is limited to two Hectares.

A.A. Roberts),
Director.

TERRITORY OF PAPUA AND NEW GUINEA



20/7/61
In Reply
Please Quote
No. 30/1-2832.

Western Highlands District,
District Office,
MOUNT HAGEN.

SMP:KOB ✓

24th April, 1959.

The Director,
Department of Native Affairs,
KORORUA.

Subject : Patrol Report - JIMI - No. 4 1958/59.
HEADWATERS - JIMI VALLEY.

Please find attached :

1. Original of Jimi Patrol Report No. 4 - 1958/1959 with sketch map accompanying.
2. Covering comment by the Assistant District Officer, Mount Hagen.

The various matters of Aid Post positioning and medical control in the Jimi Headwaters, the information on the progress of the Koi airstrip and the question of a school in the area have been taken up with Departmental representatives here.

Both the patrolling officer and the Assistant District Officer have commented fully on the correct headings.

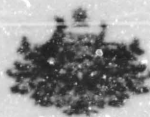
I agree that we need a second officer in the Jimi who would be able to devote a good deal of his time to the Headwaters. At the moment we are endeavouring to raise one from our staff resources within the District. It seems that the only officer available is a 23 year old Cadet who would be of the same age and field experience as Mr. Richardson was when he entered the Jimi. While it is desirable to have a more experienced officer in the Koi our present staff position will not permit it.

Would you kindly pass the information on the progress of the airstrip to the Public Works Department. They may care to inform Mr. J.R. Baker, District Airport Engineer, Port Moresby, who designed this strip. Mr. Baker may wish to comment. The Officer in Charge, Jimi, is aware of the danger of pushing developmental works too hard with a resultant loss of goodwill amongst the people. You may be assured that a balance will be kept between this voluntary labour and their own needs for gardening and social activity.

The land leases are being dealt with in separate correspondence.

I endorse the Assistant District Officer's remarks regarding Mr. Richardson's work.

(S.M. FOLEY)
A/District Officer.



TERRITORY OF PAPUA AND NEW GUINEA

In Reply
Please Quote

30/1-2799.

Western Highlands District,
Sub-District Office,
MOUNT HAGEN.

GPH:MOB

17th April, 1959.

The District Officer,
MOUNT HAGEN.
Western Highlands District.

Subject : Jimi Patrol Report No. 4 of 1958/59.

HEADWATERS - JIMI VALLEY.

Mr. H.A. Richardson, Cadet Patrol Officer.

Attached, please find the abovementioned Patrol Report in duplicate which was submitted direct to this office just prior to Mr. Richardson's departure on leave in order to save unnecessary delay.

Diary

This adequately covers the Patrol's activities.

Native Affairs

The general native situation appears to be quite satisfactory and the peoples' co-operation towards the Administration continues to be good. However, I agree with Mr. Richardson's comments that Administration influence should be more firmly entrenched in the KOL area.

It is quite apparent that Mr. Richardson's patrol has considerably extended Administration influence in this area, but in order to consolidate this influence I feel it is important at this stage to have an officer, preferably a Patrol Officer Grade I, stationed at KOL. It is a good opportunity to establish permanent Administration influence and at the same time ensure that there is no confusion which is likely to be caused by the recent influx of Missionaries into this area. If another officer is not posted there at this stage I feel there will be considerable confusion amongst the people and that developmental programmes which will be advantageous to all concerned will suffer. The new Officer-in-Charge who has already done a considerable amount of patrolling since his arrival and he cannot give his undivided attention to this area at present because he has other commitments.

Economic development in the Jimi Valley has an uncertain future, mainly due to inaccessibility. The only outlet at present will be internal, namely, the sale of vegetables, fruits and building materials to the Administration and Missions. When both airstrips, TABINUGA and KOL, are completed the position may be improved, but even then it will probably be limited due to take-off load. Gold mining is a possibility and in due course some of the men may be seen to seek employment in the Wahgi Valley or on the coast.

It will be noted that mention is made of Natives trading with Bird of Paradise plumes. This, of course, has been traditional ever since the Jini people made contact with the "outside world" and being newly contacted people it is very difficult for them to understand why the Administration should stop this practice. However, action will certainly be taken to have it stopped.

Village Officials

The majority of Officials appear to be carrying out their duties satisfactorily and maintaining law and order in their respective areas. I do not think it is a good idea to appoint too many Luluais and pul-tuls; the Badge of Office and position is more respected if limited.

Magisterial

It is pleasing to note that there have been no serious crimes in the area and that most of the disputes could be settled out of Court. It is a sign that the Village Officials and people are conscious of the fact that law and order are beneficial to all concerned.

Census

With one exception, the census revision appears to have been carried out with little difficulty.

It takes time for newly contacted people to understand the importance of a census check. In this case Mr. Richardson handled the situation with care and tact and I feel there should be no further difficulty with those concerned on this occasion.

The census figures are encouraging and it is pleasing to note that the infant mortality rate has lessened; this should continue to improve as medical services are extended throughout the area.

KOL Airstrip

A full description on the construction of this strip is covered in the report. A good start seems to have been made. The continuation of work on this strip will depend on the posting of another officer to the Jini Valley. I do think it is unwise to continue work at this stage unless there is constant supervision.

Land Investigations

The reports covering these investigations will be submitted under separate cover.

Missions and Education

Being a newly opened area there is a rush by various Mission bodies to establish themselves in the Jini Valley, especially the Headwaters. Whilst it is realised that the Missions are anxious to establish themselves in this area, it is somewhat unfortunate from an administrative point of view that their entry could not have been delayed until the area was more settled. Other comments on this subject have already been made under the heading of Native Affairs, and Mr. Richardson has fully covered the present situation.

If staff permits, I think it would be a good idea to open an Administration school at KOL. The school at TABIBUGA is progressing very well, and another Native teacher can be provided I am sure a school at KOL would be welcomed by the people in this area. The matter will be taken up with the District Education Officer.

Agriculture and Livestock

The general food situation seems to be very satisfactory.

Once the airstrip is completed there may be avenues for cash cropping in this area, but at this stage I do not think it should be encouraged. If the peanut market remains stable this crop may be a suitable one to try in the first instance. However, this can be determined by the District Agricultural Officer who will probably be accompanying me on my next inspection patrol to the Jimi Valley.

There would appear to be sufficient pigs for ceremonial requirements, but insufficient for general diet. Regarding poultry I feel the people should be encouraged to build up their stocks to supplement their protein diet which is rather limited from their irregular ceremonial pig killing.

Medical and Health

The large Aid Post at KOL is a good start towards the establishment of a Native Hospital in the area. However, I think this establishment should be increased. The District Medical Officer advised that he had been promised a European Medical Assistant for the Jimi, but the latest information to hand is that there is no likelihood of an officer being made available in the near future. This is not unfortunate because apart from the urgent need of a European Medical Assistant there is the unsatisfactory situation of various Aid Posts being controlled from Kerowagi, Minj and Mount Hagen. When a Medical Assistant is made available it is hoped that the Hospital will be established at KOL rather than TABIBOGA because of previous comments concerning administrative control in this area. In any case I feel the Jimi Valley most certainly warrants a European Medical Assistant as there are approximately 25,000 people in this area.

General

The objects of the patrol have been satisfactorily achieved.

Mr. Richardson has carried out a most satisfactory patrol. His report is well prepared and comprehensive.

Mr. Richardson is a very keen young officer and his work and devotion to duty during his posting to the Jimi Valley has been most satisfactory. He proceeded on leave on 15th instant.

G.P. HANDE
(G.P. HANDE)
Assistant District Officer.

TERRITORY OF PAPUA & NEW GUINEA

ENR

JIMI Patrol Post,
Hagen Sub-District,
Western Highlands.

March 30, 1959.

The Assistant District Officer,
Hagen Sub-District,
MOUNT HAGEN,
Western Highlands District.

JIMI Patrol No. 4 of 1958/59 by
H.A. Richardson, Cadet Patrol Officer

Patrol Personnel:

H.A. Richardson, C.P.O.

No. 3692 L/Cpl. MAUWAVI
No. 7686 Const. IMA
No. 9366 Const. WALAKI
No. 9886 Const. HAKI

Interpreters: KOSINGA of CLAC
TABI of SUBULSINGA

A.P.O. KEBIL (ex P.H.D., Kerowagi)
(part-time)

Area Patrolled:

From JIMI Patrol Post to KOL and the
Headwaters of JIMI Valley.

Duration of Patrol:

February 11 to March 25, 1959.

No. of Days:

43 days.

Last Patrol by D.M.A.:

October, 1958 (JIMI P/R No. 3 - 58/59)
Visit by C.I.C., JIMI Patrol Post,
January, 1959.

Last Medical Patrol:

September, 1958 (inspection patrol by
E.M.A., Kerowagi, of Kerowagi-staffed
Aid-Posts in the JIMI Headwaters).

Did Medical Assistant
Accompany?

No.

Map Reference:

Army Strat. 4 mile:1 inch, RANU Sheet.
Sketch Map attached.

Objects of Patrol:

1. Census revision of Headwater's Groups;
2. Supervision of Administration airstrip
at KOL;
3. Establishment and development of new
KOL Rest-house area suitable for
semi-permanent occupancy;
4. Land investigations into three areas
applied for by Catholic Mission;
5. Routine administration.

PATROL DIARY

Information regarding routes, roads, their condition, terrain etc., has been adequately covered by earlier patrol reports. New information is included as necessary in this report.

Wednesday, February 11, 1959

JIMI Patrol Post (4700' ASL) - 2 hr. 10 mins. - KORENDIU (5850') - 2.10 - MAREP (4950').

Patrol departed TABIBUGA 1100 hours with 100 carriers, arriving MAREP 1620.

Thursday, 12/2

MAREP - 2.10 - OLNA (5550') - 2.00 - DJIMBINING (4300').

Delayed at OLNA by sundry disputes. One case alleged adultery forwarded TABIBUGA for C.M.A. hearing. Arrived DJIMBINING (MANS River) : discussions with WIGA Group.

Friday, 13/2

At DJIMBINING. Census revision of four WIGA sub-groups. Some disputes settled.

Saturday, 14/2

DJIMBINING - 3.00 - KOL (5050').

Patrol very warmly welcomed at new Rest-house area at KOL. Address and discussions. Census-revision of PARA/KOL sub-groups to commence 17/2.

Sunday, 15/2

At KOL. Materials gathered to build census-shelter/court-house. Const. IMA assembled pit-saw team and commenced cutting planks. Roads around Station marked.

Monday, 16/2

At KOL. Census-shelter/court-house completed. Roads stoned. WIGA Group (ex DJIMBINING) reported for airstrip work.

Tuesday, 17/2

At KOL. Census revised for PARA/KOBUNKAN and /SOCHUNKAN-BANKAN sub-groups. Bridge Station-to-airstrip built.

Wednesday, 18/2

At KOL. Census revised for PARA/KEMAGAN, /TANBOGAN and /UROKAN sub-groups. Sundry disputes settled.

Thursday, 19/2

At KOL. Census revised for PARA/OLKA, /TAWARA sub-groups and WANGA and KOMBUKU Groups.

3...

Friday, 20/2

At KOL. Paperwork brought up to date. IMAKUMIL people supplied quantity of cans for use on airstrip (litters for earth-removal).

Saturday, 21/2

At KOL. Marked out site for store building. Police ablutions shelter completed.

Sunday, 22/2

At KOL. Store site levelled. Gardens marked out.

Monday, 23/2

At KOL. WIGA Group returned DJIBIXING. PARA Group (ex NEGIPOL) and KEMA Group (ex PUGGILM) reported for airstrip work. Const. WAIKAI proceeded KUBURA to supervise replacement of cane suspension bridge across JIMI River.

Tuesday, 24/2

At KOL. Building and airstrip supervision.

Wednesday, 25/2

At KOL. Patrol prepared for movement to MONGGUM.

Thursday, 26/2

KOL - 4.00 - MONGGUM (6300').

Patrol crossed divide at 7000', arriving MONGGUM 1230. Census revised for two DAMBA sub-groups. (Const. WAIKAI returned KOL from KUBURA - he and Const. IAMA remaining KOL on airstrip supervision.)

Friday, 27/2

At MONGGUM. Census revised for three KONDUGLEA and two DJIBIGU sub-groups in between rain showers. Sundry complaints heard and settled. Inspected Lia-Post.

Saturday, 28/2

MONGGUM - 1.25 - KANI (formerly KOLT) (4850').

Rest-house situated on right bank of JIMI River. Revised census for all people assembling here.

Sunday, 1/3

At KANI. Discussions at length with people. Decided that as old name "KOLT" causes confusion, name of Rest-house to be changed to "KANI". Actual name of Group is "TABI", not "KONDUGLEA" - refer section "Native Affairs" in report.

Monday, 2/3

KANI - 1.20 - GEBAL (4800').

Attempted census revision, but absenteeism necessitated postponement until the morrow. Address given on policy towards census-taking. At KOL: PARA Group returned NEGIPOL, KEMA Group returned PUGGILM; KONDUGLEA, DAMBA and DJIBIGU Groups ex MONGGUM reported for airstrip work.

A...

Tuesday, 3/3

At GEBAL. Census revised for WELKAI and NIBINTSE Groups - no inexcusable absentees. Discussions re land and local population centre.

Wednesday, 4/3

GEBAL - 1.30 - GUMBO - 1.00 - IAWARANGI (5300').

Dispute aired at GUMBO by Lutheran Mission active teacher against Catholic Mission catechist's activities. Census revised for two KONGGOKA sub-groups at IAWARANGI.

Thursday, 5/3

At IAWARANGI. Revised census for DANBA and KONGGOKA Groups. Various disputes; one case for S.S.A. (failure to obtain medical treatment for child) forwarded TABISOGA. Dispute between two Mission bodies at GUMBO and relevant group officials heard (at length).

Friday, 6/3

IAWARANGI - 1.00 - BUBULSUNGA (500').

Census revised for PARA/GESGA and /KIBUNGA sub-groups and the KONGGOKA/YINGGOKA sub-group.

Saturday, 7/3

At BUBULSUNGA. Revised censuses for /ARA/NAKOGAN, /KONGGOKA, /KIBUNGA, /KIBUNGA, /KIBUNGA and /WIKI sub-groups.

Sunday, 8/3

At BUBULSUNGA. Inspected Aid-Post. Discussions with group officials.

Monday, 9/3

BUBULSUNGA - 1.30 - JMI River Crossing (500') - 1.15 - SUBGILE (5400').

Crossed JMI River by new cane suspension bridge (20 minutes). At SUBGILE revised census for WELA/TEBUNGA and /DARANG sub-groups. At KIB: KONGGOKA, DANBA and NIBINTSE Groups returned NUGGOK; TABI Group ex NAMI, WELKAI and NIBINTSE Groups ex GEBAL reported for airstrip work.

Tuesday, 10/3

At SUBGILE. Census revised for two remaining WELA sub-groups. Number of minor disputes. Inspected Aid-Post.

Wednesday, 11/3

SUBGILE - 2.00 - KUBURA (5000').

Attractive walk by well-kept road. KONGGOKA Group's census revised.

Thursday, 12/3

At KUBURA. Aid-Post inspected. Group officials expressed general dissatisfaction with current (Minj) A.P.O. Discussions.

Friday, 13/3

KUBURA - 1.00 - JMI River Crossing (3100') - 1.30 - MEGIMPOL (5300').

Friday, 13/3 (continued)

KUBURA-to-MEGINPOL by native track. Actual time 3 hours, includes 30 minutes crossing by new (barely adequate for patrol purposes) cane suspension bridge. Track reasonable, but wet weather would make KUBURA-to-JIMI section difficult. At MEGINPOL, revised census for KOKILMANKA sub-group of PAMA Group.

Saturday, 14/3

At MEGINPOL. Discussions and sundry disputes.

Sunday, 15/3

MEGINPOL - 2.00 - KOL.

Returned KOL. Checked on airstrip construction. Store building completed.

Monday, 16/3

At KOL. YARI Group returned NAMI, MEUKAI and KILJITNE Groups returned GEBAL; DAMBA, KONDOLKA and KONGUGA Groups, ex IAWAKUL, reported for airstrip work. Mail in from Mount Hagen / CASIENA.

Tuesday, 17/3

At KOL. Land investigation conducted regarding proposed Catholic Mission "mission lease" on land "KAMBUKUL". Area: 16 acres. Owners willing to sell.

Wednesday, 18/3

KOL - 4.00 - MONGGUM.

Proceeded MONGGUM for land investigations regarding proposed Catholic Mission "mission lease" and "special (airstrip) lease". Contacted owners of both areas - all willing to sell. (Constables WALAKI and HANI remained KOL - airstrip supervision.)

Thursday, 19/3

At MONGGUM. Conducted land investigation for proposed "mission lease" on land "ABULMA". Area: 11 acres. Owners willing to sell.

Friday, 20/3

At MONGGUM. Conducted land investigation for proposed "special (airstrip) lease", land "KERDET". Area: 13.2 acres. Owners willing to sell.

Saturday, 21/3

MONGGUM - 4.00 - KOL.

Returned KOL. Checked on airstrip construction. Several disputes settled.

Sunday, 22/3

At KOL. Airstrip inspection. Paper-work in connection with land investigations.

Monday, 23/3

At KOL. DAMBA, KONDOLKA and KONGUGA Groups returned IAWAKUL;

Monday, 21/3 (continued)

PARA Group ex BUBULUBUA and ADWILKA Group ex KUBUKA reported for airstrip work. Three complaints investigated: to accompany Patrol to TABIBUA for C.M.A. hearings.

Tuesday, 24/3

KOL - 2.45 - DJIMBIRING - 2.00 - OLHA.

Patrol departed KOL for return to Patrol Post, TABIBUA. Summary disputes at KOL and DJIMBIRING. (Constable IAMA only accompanied the Patrol - remainder of police at KOL for airstrip supervision.)

Wednesday, 25/3

OLHA - 2.00 - PANEMP - 5.30 - TABIBUA.

Arrived JMI Patrol Post 1700 - reported to Officer-in-Charge. Patrol completed.

(L/Cpl. WIFAYI, Constables WALAKI and HAKI returned TABIBUA April 1, 1959, as instructed.)

End of Diary

Introduction

The objects of this Patrol were varied, the prime purpose being the revision of census for all Groups assembling at JMI Headwaters' rest-houses. This was carried out with little difficulty - a total of 7,103 persons were checked.

The Native situation appears quite satisfactory. The Patrol was well received everywhere and generally a high degree of willing co-operation was evident; the missions however, obviously claim much of this enthusiasm when the Administration is not present.

Construction work on the Administration airstrip site at KOL was resumed under my supervision. All Headwaters' Groups worked for one week (in rotation) during the period of the Patrol's activities in the area. The response to requests for labour was gratifying and particularly satisfactory.

The rest-house area at KOL has now been moved to the proposed Administration land "ATRAHEL-WAM" (also site of the airstrip). The old area, about one mile distant, now reverts to its native owners as a ceremonial ground.

Advice was received from District Headquarters on March 16, directing that land investigations be conducted into two areas of land at NONGGUM and one at KOL, applied for by the Catholic Mission of the Holy Ghost. Reports have been prepared and forwarded to the Assistant District Officer, Mount Hagen.

Native Affairs

The enthusiasm for and co-operation with the Administration throughout the area patrolled was very satisfactory. Food and carriers were always adequate, and warm welcomes were extended everywhere, particularly at KOL on February 1st.

The particularly satisfactory native situation at KOL has been commented upon by several Officers previously, but usually with a note of caution added that "these are surface impressions only". After my stay in the area during February and March, I would confirm these earlier impressions.

As mentioned in my JMI Patrol (Report) No. 1 - 1958/59, if/when an Administration station is established at KOL, there will be a maximum of ready and willing assistance from the PARA Group in particular and from all Headwaters' people in general. There is a strong desire (and a very real need) for the Administration's influence to be more firmly entrenched in the area, preferably through the medium of a Post at KOL rather than increased patrolling from TABIUGA.

This Patrol censused 7,103 persons; if a measure of control was vested in an Administration centre at KOL, it is envisaged that the KIDINGA Group (assembling at OLNA and KUHUNGA and totalling some 1,138 persons in 1956) would be included in the "Headwaters" area. Thus KOL could conveniently be responsible for some 8,200 natives.

(Native Affairs continued)

Strong recommendations with regard to these propositions were outlined in Mr. B.F. Griffin's JMI Patrol Report No. 2 - 1957/58.

At KOLT (now renamed "MAMI") it came to light during lengthy discussions with the people that the actual name of the Group assembling there is "TABI" and that this is a separate group with no ties, as was stated previously, with the KONDUGLA Group assembling at MANGGUM under Luluai IAMBARI. This was a misrepresentation initially made by IAMBARI so as to swell his own Group's ranks when the first census was conducted in 1953. For reasons known only to themselves the error was never mentioned to succeeding patrols until this visit.

The position now is that the TABI Group will be recognised in its own right, and not as the TABI sub-group of the KONDUGLA Group as previously. At present, three Tultuls hold rank in the Group; consideration is to be given later to the appointment of a Luluai.

For his part in the deception, Luluai IAMBARI has been soundly castigated. Extensive enquiries throughout the area patrolled indicate that the position as here described is correct. The probability of the appointment of a Luluai under the revised grouping was quite conceivably the motive behind the revelation.

The TABI Group appears to be split into five sub-groups as follows:

TOBA)	Tultul WISMA
WORUM)	('Bosboi' KIS)
DAMBA)	('Bosboi' KOSUMA)
MOMO)	Tultul TAI'A
NGOMT)	Tultul MINGOOL

It is considered that these three Tultuls should be sufficient for the control of the 487 TABI's, with one of the three ultimately being promoted to Luluai. (Tultul MINGOOL unfortunately appears to be the candidate.)

The development of economic activities in the JMI is a difficult problem. At present the Administration purchases food and pit-sawn timber, but this is a very limited market and accessible to relatively few groups. Two European missionaries are now resident in the Headwaters, but again this is a restricted outlet for produce. There is no attraction for private enterprise at present. Access to outside markets for cash-crops is impossible at present, and the airstrip at KOL when completed won't provide very economical transport.

However, the adequate supply of labour for Wahgi Valley coffee-plantations is a constant problem in that area. The JMI is capable of supplying a considerable number of labourers. This was tried with mixed success when restricted area natives were despatched under supervision to selected coffee-plantations in the Minj Sub-District. District Headquarters is aware of the results of the scheme. But it seems that outside employment is likely to be the only source of a cash income for the area.

Considerable trading takes place between Chimbu/Kerowagi/Mondugl/Minj/Banz areas and the JMI Valley, the bird-of-

(Native Affairs continued)

paradise and his plumes being the export from this area. Axes, tomahawks, spades, bush-knives, pigs and sometimes cash are the mediums of exchange for the much sought-after plumes for decoration by the Chibou and Wahgi people. Whilst areas to the south of the Wahgi Valley are almost equally favoured as a source of supply, the number of birds killed in the JIMI area must have reached tremendous numbers. One observer estimated that at a singeing at Mondugi (Wahgi Valley), at which perhaps 500 natives were present, the plumes of about 7,500 birds were used as decorations. Whilst appreciating the value to native culture etc., it would be tragic if the Bird-of-paradise was decimated to the point of extinction.

Census

Census revision was carried out at the ten headwaters' rest-houses, a total of 7,103 persons being checked with little difficulty. One exception was at GEBAS, possibly the remotest of the stations, where lining was so poor at the first attempt that the check was postponed until the following day, and an address given on Government policy relating to census-taking. On the re-check, inexcusable absenteeism was nil. Proceeding under Regulations 113-4-5 of the M.A.R.'s were no considered as the unsatisfactory attendance was due more to ignorance than to wilful neglect.

The census statistics indicate no marked trends. The previous (November, 1957) census check showed a total of 6,802 persons: therefore an increase of 301 has occurred of which about 15 persons were previously not recorded. This is an actual increase of 4.2%, or about 25 per annum.

Of the estimated available male adult labour of 1,627 persons, only 62 (3.8%) are employed within the District and a further 50 (3.7%) employed outside the District (many in the nearby Eastern Highlands District).

Birth-rate : death-rate is about 159 : 100 for the 28 months' period. Infant and child mortality appears to have lessened appreciably in several areas which now have ready access to Aid Posts.

Census points are sufficient with perhaps the exception of KOL where 1,330 people assembled, but as there is a heavy population concentration in the vicinity, there seems little point in adding an additional rest-house, especially as it is proposed that KOL should develop into a Government station.

Village Population Registers for this Patrol are attached.

K. G. L. AIRSTIDE

This airstrip site at KOL was first inspected by the then O.I.C., JMI Patrol Post, Mr. B.F. Griffin, in the course of a patrol to the area in May, 1958, (JMI P/R No. 2 - 1957/58).

Following preliminary clearing and some ground work including drains, the site was inspected by Dept. of Civil Aviation engineers early October and again late November, 1958. Favourable consideration was given and plans and specifications prepared in Port Moresby for the Director, Dept. of Public Works. Copies of this report, together with drawings, were forwarded to the District Commissioner and to the O.I.C., JMI Patrol Post (D.C.A. reference: 48/302/1, undated).

As my Patrol was programmed for about six weeks' activity in the Headwaters, it was considered an opportune time to commence construction in earnest while some measure of European supervision was available.

Although the Airport Engineer, Mr. J.R. Baker, had recommended in his report that work should initially be concentrated on the top 1000' of the 'strip side (total length is 1650'), this was not followed. This section requires removal of humus to spoil, average depth being 12"-18", followed by cuts or fills averaging about 12" with several notable exceptions in the first 100'. From my limited experience at TABURUA of 'strip construction there, these tolerances at KOL could not safely be left unsupervised had work commenced on that section which was recommended (i.e. 00' - 1000'). Consequently, excavations were commenced between the 1000' and 1400' marks removing the considerable depth of humus.

The position now is as follows:

00' - 500' : no work carried out;
 500' - 1000' : cleared of grass and pitpit - ready for humus removal;
 1000' - 1400' : humus removed, in places to final level;
 1400' - 1500' : pitpit cleared; ready for humus removal;
 1500' - 1650' : no work carried out.

At the 1200' mark, where the depth of humus is greatest, (to 12"), D.C.A. recommendations were:

HUMUS CUT 75' L. 2' 0" - C.L. 5' 6" - 75' R. Nil.

However, at the 75' R. marker, humus exceeds 10' in depth. The fill required, 3' 8", is similar to that required at the centre (2' 9"), but the humus removal at the side is quoted as "Nil". The reason for this is not understood. However, the humus at this point (line 75' R.) is particularly soft and unstable, although drains have been put through the area. Removal has been effected to a depth of about 6' and it is not planned to go down further until a clarification is received from the Dept. of Civil Aviation.

At the 1200' - 1400' section, humus has been removed as required and the area now awaits filling, except where some firm ground has to be cut to achieve final level.

With the Patrol's commitments of census revision throughout the Headwaters, the 'strip did not / could not receive very much attention. When D.C.A. staff becomes available for full-time close supervision, cuts and fills requiring minimum work to achieve finished levels can be completed. More efficient utilization of labour will also make for economies in effort.

/ll...

(KOL Airstrip continued)

All human spoil has been carried and dumped (to a depth of 18") in the area to the left (South-west) of the 1000' - 1150' sections of the 'strip. Opinion is that it will later provide good gardening ground after thoroughly drying out. The soil area borders pippit swamp and will not be required for building sites or similar purposes.

Additional drains have been put in as work required and also where earlier drainage had proved inadequate. The drains, now 200' apart, which run parallel to the airstrip, will later be supplemented by drains bordering the actual 'strip, i.e., at a width of 15', which will feed at 100' intervals into the outer drains.

Labour was rostered on a group basis and each group worked for one week - this ensured that each group put in an appearance whilst the Patrol was present. Groups, sub-groups, group officials, census-grounds, actual current (post-census revision) labour potentials and a record of attendances have been entered in a card index (as at TABIBOGA for that airstrip), and will provide useful information for succeeding officers.

Response to requests for labour was very satisfactory as was the men's enthusiasm. It was stressed frequently that not only were the menfolk building "their" airstrip, but that the women, by supplying food for the workers (for which cash payments are made by the Administration), were playing an equally important role in the project. This attitude was openly supported by many group officials, it is believed the womenfolk also appreciated the recognition.

A labour potential (calculated thus: males, 16-45 years, less those absent in employment) of 1,210 able-bodied men is currently available, which, assuming a work period of two weeks on six weeks off, gives a labour force each fortnight of 300 men (less say 10% of reasonable absenteeism due to sickness, etc.). This should be sufficient to complete the project in about a further 6-to-8 months (not an optimistic guess). The sub-groups of the PARA Group assembling at KOL have an actual labour potential of 263 and the small WAFGA and KOMBUKU Groups can muster 18 able-bodied men. This total of 281 has not been rostered for regular airstrip work as station establishment commitments will more than occupy their time and energy at a later date. (This plan has been adopted at TABIBOGA in respect of that 'strip.) However, periodically these people should spend some time on the 'strip for appearances sake.

A compound, comprising six native style houses up to 500 in length, has been constructed and should be sufficient to house 'strip workers in the future. The compound is sited on the left-hand (South-west) side of the airstrip about opposite the 900' - 950' marks.

Additional equipment is needed to supplement the 40 odd spades and shovels which have been used to date. It is suggested that these additions should include 120 spades (rather than shovels), 30 picks, 30 axes and 6 crowbars. Trade items for purchase of native foods and provision of "gifts" to volunteer work forces should include: 75 bags salt, and about £200 worth of suitable trade items, mainly face-paint, matbes, and some beads and mirrors. This should cover immediate requirements.

Land Investigation

On March 16, inward mail was received at KOL which included an instruction from the Assistant District Officer, Mount Hagen, directing this Officer to conduct investigations into two areas of land at MORGUM and one at KOL applied for by the Catholic Mission of the Holy Ghost.

An application had been lodged by the Mission for a "mission lease" at KOL of about "10 acres". The native name of the land is "KASUKUB" and although the original boundaries as described by Father A.M. McVernett were subsequently appreciably reduced by the owners in my presence, the amended (and marked) area is approximately 10 acres. The owners are willing to sell and a report indicating that the land is surplus to their requirements submitted.

Applications lodged in respect of lands at MORGUM were:

- 1) "Mission lease" on native land named "KASUKUB", about "8 acres". Subsequent survey showed the area to be about 13 acres - native owners are willing to sell and a favourable report submitted.
- 2) "Special (airstrip) lease" on native land named "KEMBEI", about "12 acres". Proposed lease area has been reduced by about 50% and surveyed, indicating about 11.2 acres. Owners are prepared to sell, and it is considered that the land is available for alienation. However, recommendations have been made in the investigation report that the proposed airstrip site should be the subject of Dept. of Civil Aviation consideration and if possible, inspection, as the site is a typical JMI Valley proposal and far from ideal.

Reports, survey maps and locality maps have been prepared and forwarded to the Assistant District Officer, Mount Hagen.

Village Officials

Perhaps the satisfactory state of affairs throughout the Poodwaters can be attributed in part at least to each Group's Government-appointed officials, most of whom are reasonably satisfactory. In several cases where younger men hold the rank of tuitul, they usually out-shine the older officials. This is the case at GERAL for example.

Officials were all encouraged to settle ~~minor~~ disputes within their sub-groups and Groups, but in the event of parties not abiding by decisions and also in all cases of misdemeanours requiring C.R.A. hearings, it is the officials' duty to bring the matter before a magistrate.

It will be recommended in separate correspondence by the Officer-in-Charge, for the District Officer's consideration, that the following resignations be accepted and replacement appointments confirmed:

Tuitul ROBUNA of MAMI (KOLP) - replaced by TAMA
Tuitul NGANY'S of GERAL - replaced by K. KALI

/1111

(Village Officials continued)

At almost every assembly-point, requests were made for additional appointments to rank of taltai and luluai. In only one case was this considered justified, and this a promotion, not a new appointment. Taltai ABO of KUPURU is recommended for appointment as luluai of the KONGILAKKA sub-group, PANA Group. At present, PANA's assembly is held under luluai KOLYE, and at KUPURU under luluai KOLYE; the third section line is at KUPURU, PCL, and total 191. In the past both KOLYE and KUPURU have had for control of the KUPURU people - the appointment of their own luluai should solve this.

Some 20 Headquarters' officials accompanied the Patrol back to TASIBUGA where a "school" was soon held at which encouragement, outlines of Administration aims and requirements, luluais' and taltais' responsibilities and limitations etc., and several periods of "drill" were included in the syllabus. Mutual benefit is gained, as the officials' questions and points of view invariably assist the Administration's Officers etc. These "schools" are not new to the JMA, the previous O.I.C. having conducted courses which have included most of the officials in the Valley.

Magistrate

The usual quota of disputes regarding women, trespassing pigs, small debts, etc., were brought before the Patrol and settled, where possible, with the active assistance of group officials. Officials were constantly encouraged to settle minor disputes themselves, but reminded that all serious offences must be brought before a magistrate.

Several cases were investigated and, being outside my jurisdiction, were forwarded to TASIBUGA for C.R.A. dealings. Included were one case of neglect to obtain medical treatment for a child, one of unlawfully striking, one of sorcery and one an offence under Reg. 125 of the S.A.R's. The first three resulted in convictions and terms of I.S.B., the fourth in an acquittal.

No crimes of real moment were reported to the Patrol, and no land disputes were brought forward.

Missions and Education

Mission influence is strong in the JMI Headwaters and is likely to continue to grow with two European missionaries operating in the area.

At KOL, the Lutheran Mission have applied for a "Mission lease" and a "Special (agricultural) lease". Both areas have been investigated, reports submitted, etc. (Refer C.I.C.'s 34/5/57-161 of October 26 last and JMI Patrol (report) No. 1 - 1958/59.) The Rev. E.H. Junker (and his wife) have established the rudiments of a mission station. A Rev. Hagar, as reported in the C.I.C.'s 32/2-218 of February 25, 1959, to the A.D.C., Mount Hagen, has recently visited KOL, and it is believed he hopes to be married there later this year, subsequently assisting Mr. Junker in the Headwaters.

A total of 11 "schools" have been established by this Mission, usually a church accompanying the school building. Pidgin and KOTTE are the mediums used for instruction after initial indoctrination in the vernacular language. Mr. Junker admitted that in the light of recent Administration policy directives regarding financial support to mission schools, Pidgin and English will be taught at KOL and surrounding areas.

At KONGGHE, where Father J.E. McDermott has set up a Catholic Mission station, two areas of land were the subject of investigations upon receipt of instructions from the Assistant District Officer, Mount Hagen. (Refer section "Land Investigations")

The priest commenced operations there in May, 1958, and now has quite a large establishment. Ten "stations" incorporating churches and "schools" have been established around the Headwaters. Pidgin (and later English) is used for instruction.

Both Missions experience a high rate of truancy at most of their "schools", and appeals were made to the Patrol for directives to be issued to group officials and parents regarding compulsory attendance of children. This was refused and the obvious reasons clearly given to all concerned, although the advantages of education were pointed out.

There is a sincere desire amongst many natives for their children to receive education and thus provide an opportunity for increased earning capacity later. There is a real need for an Administration school at KOL; I recommend that consideration be given to its establishment at the outset of firm development by the Government at that centre.

At SOIMBO, 1 hour from IAWARAHU towards GEBAL, a complaint was made by the Lutheran Mission teacher stationed there (since 1952?) against a Catholic catechist who one week previously had moved into the area and with the help of several local natives commenced erection of a house (preliminary to a "station"). The point made was that the building was about 200 yards distant from the well-established Lutheran Mission station.

It appears that Tultul ANUWAI of the KONGGHE/ARAJA Group (IAWARAHU) has a long-standing feud with his Luluai KOBUN (a Lutheran sympathiser) and by importing a Catholic catechist of his own, ANUWAI hoped to even the score. His action has resulted in disrupting the KONGGHE's, and my advice was that as he (ANUWAI) had initiated the problem through his own foolishness,

(Missions and education continued)

he must remedy it, the alternative being that both Missions would remain, but only at loggerheads. The Administration's only avenue then would be to remove ANUWAI from the responsible position of Tulu for his trouble-making. At the same time, it was very clearly stressed that my advice was strictly impartial, as was the Administration's policy towards individual mission bodies. It has since been reported that the Catholic party has been removed.

Mission activity in the JBI area in general and the Headquarters in particular has been the subject of much correspondence in recent months, and further elaboration now would be redundant. Recent references include: S.I.O.'s 32/2-213 of 25/2/58, to A.D.C., Mount Hagen; 32/2 (32/2) - 180 of 3/12/58, to District Commissioner, Mount Hagen; 32/3 (1/5) - 157 of 2/10/58, to District Commissioner; JBI Patrol No. 1 - 1958/59.

Agriculture and Livestock

The staple in the area is sweet potato, supplemented by taro, bananas, papaws, sugar-cane, corn, some peanuts and some European vegetables. Both varieties of pandanus fruits are much eaten, the MARKA currently assuming the proportions of a staple second only to sweet potato. Food was in adequate supply for Patrol needs and gardens mostly are in full production at the moment.

At MONGGIM, MIMI and SEMBAI, where gardens are often at altitudes over 5,000', the variety of foodstuffs is limited due to the cold, wet climate.

It was suggested by Agricultural Officer Mr. F.B. Wasilowsky in his D.A.D.F. Patrol Report No. 1 of 1957/58 that the agricultural potential of the Upper JMI (and headwaters) was practically nil. Cash-cropping is a possibility, but as pointed out by Mr. Wasilowsky, extensive clearing of land and clean methods of cultivation will result in even more damage being done by hydraulic erosion. Almost all gardens are sited on hill-sides, flat ground being a curiosity in the headwaters.

The problems of marketing a cash-crop are considerable, although with the completion of the airstrip at MCL, Government-chartered aircraft could be back-loaded in the future.

Both peanuts and passionfruit have been requested by the O.I.C., JMI Patrol Post, on a number of occasions, peanuts only having been supplied. Liberal distribution of both these diet supplements would be advantageous, as would the adequate supply of European vegetable seeds.

Livestock: An appendix "B" is attached containing statistics collected during the Patrol regarding the number of pig owners, number of pigs, etc., and is submitted in accordance with the District Commissioner's instruction 17/1 (30/1) - 2 of July 1, 1957.

This livestock census can be taken as reliable for some groups only; others would not admit to the actual number of pigs, although pains were taken to ensure that both the nature of and reasons for the check were fully understood by the natives. It is conservatively estimated that the number counted, 3,943, could be increased 50% to say 6,000, or an average of 4.0 pigs per owner.

It must be remembered that for an important ceremony as many as 70% of pigs owned are killed, and for a pig festival all are slaughtered except for a few which are retained for breeding. So that livestock census statistics can be very changeable.

Pigs seen were generally of fair quality, with some admixture of European strains. Troubles occur with the frequent trespassing of pigs in gardens, but damages are usually settled by Group Officials. (The provisions of Reg. 101 of the S.A.R.'s were clearly explained at all centres.)

Poultry is generally of a quite good standard, but is not nearly as highly prized as are pigs. The attached appendix "B" shows a total of 565 birds or about one-seventh the number of pigs.

Medical and Health

Generally, health throughout the area was satisfactory, with nutrition amongst adults good and amongst children fairly good. The following treatments were given by A.P.O. KEBIL (of P.H.D., Kerowagi, E.H.D., who was stationed at KOL, JIMI Headquarters), who accompanied the Patrol:

Cuts and Sores	437
Stables	320
Malaria	152
Coughs & Colic	36
Gonorrhoea	55
Tropical Ulcers	25
Diarrhoea	21
Pneumonia	7
Chicken-pox (?)	5
Tinea	3
Leprosy (?)	2
Taws (?)	1

Total number of treatments was 1,104; in addition all Aid-Posts had some in-patients.

The large Aid-Post at KOL appears well-run and very well patronised. A new Kunal thatch was put on the dispensary under the Patrol's supervision. The Aid-Post remains at the old rest-house area, but will ultimately be replaced by a native hospital at KUMANEL-WAM, when current plans reach fruition.

At MONGGUM, there is a clean and efficient Aid-Post under the supervision of an A.P.O. AGUWA (of MONGGUM), whose work shows a conscientious attitude. The TEBULSUNGA Aid-Post badly needs an additional ward, which will be built very shortly by Lulual FEM of IANARABEL (one hour from TEBULSUNGA). A local native is the A.P.O. in charge here. At PUSULLE, an Aid-Post was opened late last year, and appears to be doing a worthwhile job. A convenient water-supply for this latter Aid-Post is a seemingly unsolvable problem unfortunately - re-siting may be a solution.

These four Aid-Posts are all staffed and supplied by P.H.D. at Kerowagi. This necessitates sending patients in need of special treatment to that Station; also medical patrols are conducted from/by Kerowagi; A.P.O.'s are trained at Goroka; in short the focus point is blurred, the Western Highlands and the Eastern Highlands Districts both being involved in the one area, a bewildering complication and diversification of control to the native mind. Previous patrol reports have mentioned the undesirability of this tripartite control of JIMI medical services. (P.H.D. at Mount Hagen, Minj and Kerowagi all have Aid-Posts staffed by themselves in the area.) It is believed that responsibility rests with the Regional Medical Officer at Goroka. No solution is yet in sight.

At KUBERA, a Minj responsibility, A.P.O. ABA appears far from capable, and dissatisfaction at his appointment was expressed by Group Officials there. This will be the subject of separate correspondence with the Medical Officer at Minj.

Rest-houses

At KOL, the rest-house area has been changed and new buildings erected on the land "KURAMEL-WAM", which, it is believed, the Administration intends alienating. (Investigation and reports have been completed - ref: D.L.C.'s 31/30 - 64 of 17/5/58 to the District Commissioner, and the District Commissioner's 34/30 - 680 of 19/8/58 to the Director, Dept. of Native Affairs.)

A rest-house (31' x 25'), suitable for semi-permanent occupancy, 2 police-barracks (each 25' x 19'), 1 married-police house (26' x 20'), 1 census-shelter/court-house (22' dia.) and a building (38' x 20') incorporating 2 lock-up stores and a police mess (20' x 13'), have all been completed. Roads have been marked, stoned and flower-bordered. Gardens have been prepared and planting commenced.

Other rest-houses visited were adequate as was police accommodation etc. A genuine interest seems to be taken at not a few rest-houses in making them attractive by planting decorative shrubs, careful stoning of paths, trimming of hedges and so forth.

At KOLI, it was agreed that the name of that rest-house should be changed to MAMI, so avoiding confusion with KOL with attendant feelings of inferiority at the commonly used description "KOLI no. 2" and "small KOLI". This was noted in Mr. S.F. Griffin's JMI Patrol No. 2 - 1957/58, the new name having now been decided upon. However, in view of these Headwaters' peoples' remarkable dexterity in changing names of persons, groups and places, it is suggested that the new name MAMI should be on trial for say 12 months. (MAMI is the native name for the land on which is situated the rest-house.)

Names of other rest-houses are also in question. IAWARANON seems (now) to be clearly pronounced "IAWARANUL" and BUBULSANGA "BUBULSANGA" - both pronunciations being carefully checked with the actual owners of the land. A subsequent re-check may indicate that amendments to maps are desirable for accuracy.

Roads and Bridges

Movement is by foot throughout the area patrolled, and graded patrol-tracks connect all census-grounds with the exception of KUBURA-to-MEGINPOL. This latter route has not previously been covered by a patrol, but a road will be necessary sooner or later as KOL becomes the focal-point for the Headwaters.

In most cases, roads and bridges proved adequate for patrol movement. Where poor sections were encountered, group officials were instructed to supervise early maintenance.

Cane suspension bridges over the JIMI River connect BUBULSANGA and BUBULSANGA and also KUBURA and MEGINPOL. The former is adequate, the latter too narrow for easy portage of patrol gear but is otherwise satisfactory.

Conclusion

Throughout the area patrolled, the native situation is very satisfactory, with co-operation with and respect for the Administration being high. All groups in the area were censused, the statistics showing no unexpected trends. Aid-Posts in the area are all doing a useful job medically. Agricultural potential appears almost nil, due to the absence of any arable ground (i.e. land with less than 10° slope which is capable of permanent cultivation). Economic development is particularly difficult to foresee. Perhaps the area can best be envisaged as a suitable source of labour for both Wangi coffee-plantations and for coastal employment. Construction work on the KUL airstrip proceeded satisfactorily, but should have European supervision when work recommences.



(H.A. Richardson),
Cadet Patrol Officer

Appendix "B"

LIVESTOCK CENSUS

GROUP	SUB-GROUP	NO. PIGS	NO. SHEEPS	AV. APPER	REMARKS	NO. FLOCKS
<u>WIGA</u>	KONDALUNAN	54	31	1.7	Not reliable	12
	POBUNGAN	32	30	1.3	" "	5
	KAPTUKARA	37	30	1.2	" "	1
	HALI GARA	12	7	1.7	" "	1
<u>PARA</u>	KESUNGAN	38	36	1.3	" "	2
	WONUKAN } (SABAN)	32	32	1.6	" "	6
	KEMAGAN	19	16	1.2	" "	10
	TANJOGAN	45	15	3.0	Reliable ?	1
	OHOKAN	49	16	3.0	" ?	6
	OGILKA	39	26	1.5	" ?	15
	MURAKA	34	29	1.1	Not reliable	5
	FINUPGA	85	29	3.5	Reliable	31
	WALOGAN } KONBUKAN }	129	39	4.4	"	19
	KEJALAN	157	34	4.6	"	67
	YANEP	98	24	4.0	"	32
	TANJOGAN } WILKA }	89	26	3.4	"	28
	KONBUKA	69	33	2.1	"	25
	KETAMUKA	72	57	1.5	"	19
<u>BAUSA & } TUMBUKI }</u>	-	14	12	1.1	Not reliable	6
<u>BAUSA</u>	KISUMBA	62	26	2.3	Reliable ?	6
	DANGAGANA	27	17	2.2	" ?	-
	DALT	62	16	3.8	Reliable	3
	WARUH	218	36	6.0	"	10
<u>KONBUKA</u>	GARAKA	53	31	2.5	Reliable ?	10
	SEMILIGANA	42	21	2.0	" ?	1
	KONDILIGANA	67	30	2.6	" ?	17
	KEJALAN	87	16	7.3	Reliable	13
	KONBUKANA	31	15	3.4	"	6
<u>BERJURE</u>	KONGAGANA	30	15	2.0	Reliable ?	-
	KONGAGANA	85	36	2.2	" ?	-
<u>WASI</u>	-	133	71	1.8	Not reliable	17
	-	29	22	1.2	" "	-
<u>WILIKSE</u>	-	-	-	-	-	-
	-	-	-	-	-	-
<u>WILIA</u>	WENAGA	17	13	1.3	" "	-
	KOMINI	26	21	1.2	" "	-
<u>KONGUA</u>	ARAGA	97	55	2.1	Reliable ?	16
	NEMPICA	21	14	1.5	" ?	2
	YINGILKA	185	36	5.1	Reliable	15
<u>KEMA</u>	DARAGA	165	32	5.1	"	1
	TUNGA	121	27	4.5	"	1
	KONKUGA	345	67	5.1	"	23
<u>AMUKA</u>	AGILKA	117	77	1.1	"	19
	DARAGANA	217	32	5.5	"	16
	KOCUKAKA	274	46	6.8	"	16
<u>Totals</u>		3943	1238	3.2	-	365

(For comments on this Appendix "B" refer page 16 of Patrol Report)

H. A. Richardson
 (H. A. Richardson)
 Cadet Patrol Officer

Division Engineer by
W.A. Richardson (1958)

Upper Tim Valley & Timi Headwaters
Forest Sub-District - W.H.D.

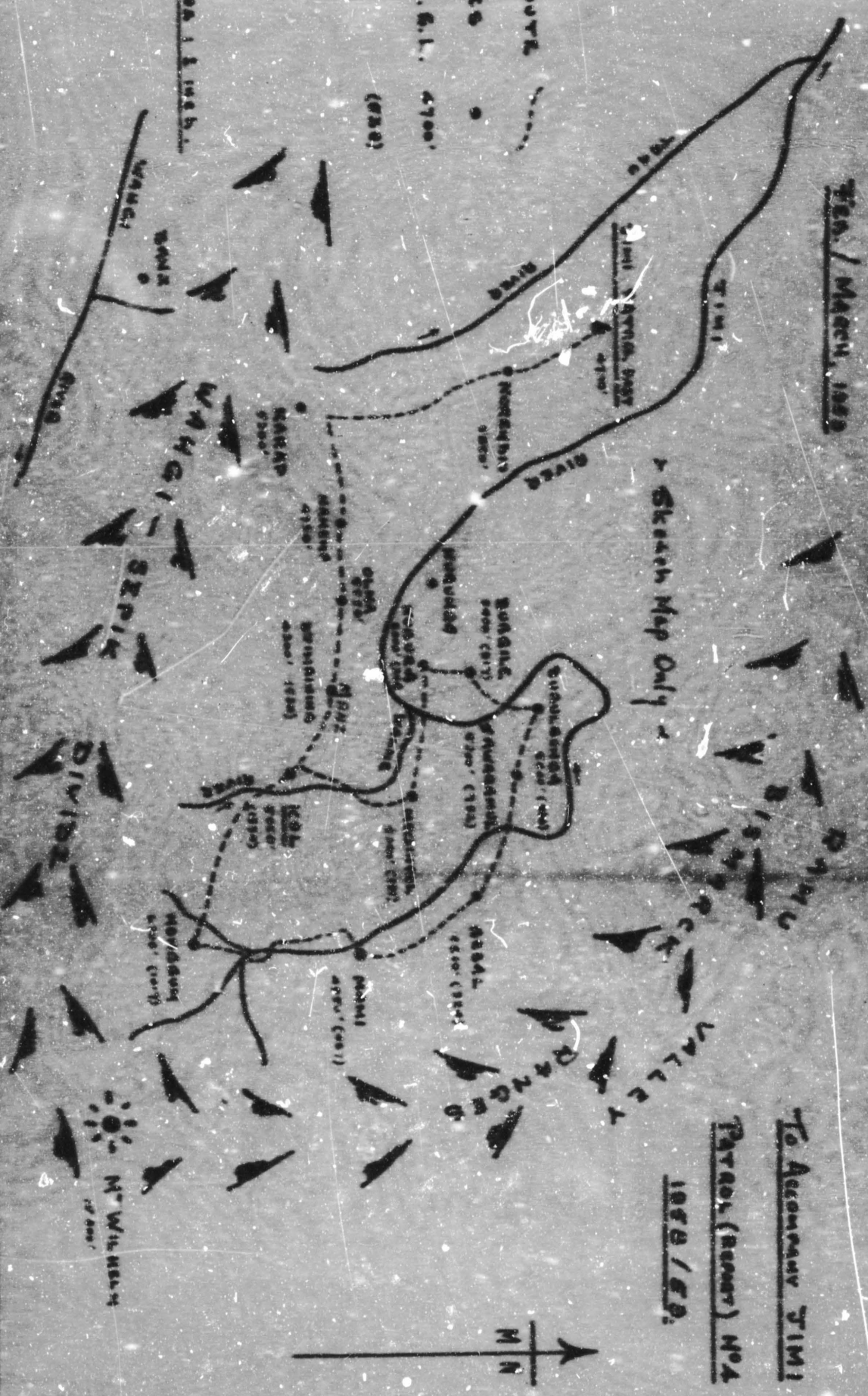
To Accompany TIM1

Parish (number) No. 4

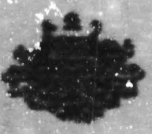
1958/59.

Parish Route
Dist. 40000
Altitude 4,611. 4700'
Population (1958)

Scale - 4 miles 1:50000



JWA.



TERRITORY OF PAPUA AND NEW GUINEA



PATROL REPORT

District of Western Highlands Report No. Jind River No. 9 - 58/59
 Patrol Conducted by Patrol Officer Mr. B. A. Ryan
 Area Covered North West Jind River and Hismark Ranges to Sibal Valley & Patrol Post.
 Patrol Accompanied by Europeans: Mr. E. H. Foley, District Officer, Western Highlands
Dr. L. K. Petruskas, District Medical Officer, M.B.O.
Native 2 members of Jind and Mt. Hagen D.P.S. M.B.O.

Dates: From 1 / 3 / 1959 to 25 / 3 / 1959

Number of Days 25 days

D.M. Medical Assistant Accompanying: No. District Medical Officer accompanied.

Last Patrol to Area by District Services / / 19

Medical / / 19

Map Reference Donn Start, Series, Copying attached, with a photo.

Object of Patrol Finalization of the Jind - Sibal Divide and finalization of the Hismark Valley. Routine Administration, Census revision and initial census.

Director of Native Affairs,

PORT MOESBY.

Forwarded, please.

/ / 19

District Commissioner

Amount Paid for War Damage Compensation £

Amount Paid from D.M.E. Trust Fund £

Amount Paid from P.E.D.P. Trust Fund

15 30/1962

SECRET
EXEMPT

27th August, 1959

SECRET
EXEMPT
SECRET

SECRET

The first and foremost concern of the Government is the welfare of the people. It is the duty of the Government to ensure that the people are provided with the highest quality of goods and services. This is the responsibility of the Government and it is the duty of the Government to ensure that the people are provided with the highest quality of goods and services.

A large part of the effort is not confined to providing the people with the highest quality of goods and services. It is also the duty of the Government to ensure that the people are provided with the highest quality of goods and services.

The Government is to be commended on a most satisfactory record and the satisfactory administration of the Government has been noted with pleasure.

(S. G. Roberts)
Director

EMBLEM

TERRITORY OF PAPUA AND NEW GUINEA

In Reply
Please Refer to
No. 30/1-2855.

Eastern Highlands District,
Sub-District Office,
MOUNT HAGEN.

GHINGS

20th April, 1959.

Sir District Officer,
MOUNT HAGEN,
Eastern Highlands District.

Subject : Jini Patrol Report No. 5 of 1958/59.
North West Jini, MIMBESA MOUNTAINS,
MIMBESA VALLEY.
Mr. R.A. Ryan, Patrol Officer.

Attached, please find the above-mentioned Patrol Report in duplicate.

The purpose of the patrol is covered in the introduction of the report.

Findings

This adequately covers the Patrol's activities.

Native Affairs

It is pleasing to know that the native situation along the North Hill is good. Constant contact with these people during the past three years has allowed a number of groups to settle themselves on their traditional land. It will, of course, take time for these groups to relax their suspicions towards one another, but this should be overcome in due course if there is constant contact.

General information concerning the present situation is adequately covered in the report.

Village Officials

All Village Officials appear to be carrying out their duties satisfactorily. It is pleasing to note that the patrol received their full co-operation. Most of the Officials seem quite conscious of their Badge of Office and do their best to warrant it.

I agree with Mr. Ryan that the selection of officials at SEBANT should be left in abeyance until more knowledge is gained about the groups concerned.

Census

It is pleasing to note that Mr. Ryan had no difficulty with the census check and that 293 people were contacted in addition to the initial census.

Agriculture and Livestock

As mentioned in the report, the terrain in this area is a handicap and limits the cultivation of large gardens.

Although food is not plentiful this time of the year there appears to be sufficient for the people's immediate requirements. The position should improve within the next few months.

A small quantity of European vegetables was recently supplied to the office in Lhasa, and will be forwarded as they become available.

Health

It is not surprising that a European Medical Assistant cannot be secured for the Jini Valley. In view of the high population and the present state of health in the area, a suitable person is hard to find. Another unsatisfactory situation is the number of diseases contracted from these districts, including, Measles, Typhoid, Malaria and Leprosy.

I agree with Mr. Ryan that we cannot expect any improvement until there is a central control in the Jini Valley under the supervision of a European Medical Assistant. It is hoped that the Administration of the Tibetan States will be able to provide this.

Schools

There has been insufficient time for the establishment of schools in this area. However, we mentioned in the report that the English Mission to construct schools at Jini and Kibul and at present there are three students from this area attending the Administration School at the Jini Patrol Post.

Missions

Apart from what has been mentioned, there is little to report on Mission activity in the area. Those concerned are now concentrating on establishing themselves. It is pleasing to note that they are concentrating on the establishment of schools in the first instance.

R.P. & R.S.C.

Comments on members accompanying the Patrol have no doubt been forwarded by the Officer in Charge to Police Headquarters. The general discipline, work and morale of the members appear to have been good throughout the Patrol.

General

The main objects of the Patrol were achieved. The route taken considerably increased Mr. Ryan's knowledge of the area which will be invaluable to him in the future.

Mr. Ryan has been doing an excellent job since taking up duty as Officer in Charge of the Jini Patrol Post, especially in active patrolling.

[Signature]
(S.P. HADLEY)
Assistant District Officer.

11/1/199

REPORT OF THE DISTRICT OFFICER

Serial Report

No. 2 of 199 / 199

Serial Controlled by: Mary A. Ryan - Patrol Officers

**Area Covered: North East Hill Street and Market Street to
Market Valley and Market Post.**

**Serial Inspected by: Mr. G.W. Kelly, District Officer, Western Highlands
Mr. L. Buchanan, District Medical Officer, Western
Highlands.
Inspector, New Scotland Yard and West Highland
Highlands.**

Period: From 1st March, 199 to 31st March, 199.

No. of Days: 31

**Object of Report: Investigation of the Hill - Street Hill and
Investigation of the Market Valley.
General Administration
Daily activities and general matters.**

By: Sgt. Carl. Gordon, County of Highland, 1.9.9 - 4.9.9.

**Mary A. Ryan
Patrol Officer**

DISTRICT OFFICER'S DIARY TO ACCOMPANY RAIPOL REPORT
JUNI NO. 5 OF 1953-1954.

Monday, 23rd February

Departed Mount Hagen 4 p.m. by Land Rover for Baka Rest House - camped overnight.

Tuesday, 24th February

Cargo moved from Baka to Kiwena. Dr. Petrauskas and Mr. B. Barton, Supt. Patrol Office, accompanying. Call for carriers during afternoon.

Wednesday, 25th February

Departed KIWENA 5 a.m. after sufficient carriers available. Long gradual climb up Jimi - Wahgi Divide to top of range and then a long gradual descent to KIRAI Rest House - about 5 1/2 hours.

Thursday, 26th February

From KIRAI at 8 a.m. along good road crossing three ridges to position above Tabituga. Descent to station about 4 1/2 hours from KIRAI.

Friday, 27th February

At Tabituga on station inspection.

Saturday, 28th February

At Tabituga.

Sunday, 1st March

Departed Tabituga 11 a.m. in company with Dr. Petrauskas, District Medical Officer, and Mr. B.A. Ryan, Patrol Officer, Officer in Charge, Jimi. To EWIDON after 3 hours walk.

Monday, 2nd March

EWIDON to KOINANDI - 5 1/2 hours.

Tuesday, 3rd March

KOINANDI to YIMBUSEMA - 1 1/2 hours.

Wednesday, 4th March

From YIMBUSEMA to BOKAPAI - 1 1/2 hours.

Thursday, 5th March

From BOKAPAI to SUWENKAI - 4 hours.

Friday, 6th March

From SUWENKAI to Camp on Rama Fall - 5 1/2 hours.

Saturday, 7th March

From Camp Rama Fall to McInnon's Mine - 6 hours.

Sunday, 8th March

From McInnon's Mine to Siabai - 6 hours.

DIARY OF P. J. H. ...

THE ...

Monday, 9th March

At Simbai

Tuesday, 10th March

From Simbai to camp in Kaironk - 3 hours.

Wednesday, 11th March

From Kaironk to Simbai.

Thursday, 12th March

From Simbai to Mount Hagen by light aircraft.

The ... of the ... and the ... of the ... in the ... of the ...

It is ... of the ...

Handwritten notes:
...
2/30

The ... of the ...

A ... of the ...

MAIL

A ... reported ...

... from ...

... about ...

A ... about ...

... about ...

TERRITORY OF PAPUA AND NEW GUINEA.

JIMI PATROL REPORT NO. 5 1958/59.

INTRODUCTION.

In addition to enabling a census revision to be carried out in the area visited this Patrol was of interest for a number of reasons.

1. It enabled the District Officer, Western Highlands District, and the Medical Officer, Western Highlands District, to gain a fair picture of some of the more isolated parts of the District.

2. A contact has been set up across the District Boundary between the Western Highlands District and the Madang District. This should prove invaluable in the consolidation of Administration influence among the people living in the upper parts of the Bismark Ranges.

3. It has paved the way for effective Administrative control of the KLINGOK Valley.

4. The boundaries of these people under census have been somewhat enlarged and two further groups brought nearer Administration control.

A patrol of this nature could have easily spent several months in the area but unfortunately urgent work at the Jimi Patrol Post required that I return before the end of March. Although I should have liked to remain somewhat longer I feel that much was accomplished and, if the friendly spirit in which the Patrol was received is any criterion, that Administration - Native relationships are good in the area visited.

DIARY.

1st. March. Departed Jimi Patrol Post at 1100 hours and after a three hour walk over a reasonably graded track arrived at KWIBUN Rest House.

Road. Good.

Rest House. Poor. (Has since been replaced)

2nd. March. Five and one half hours from KWIBUN to KOINAKELI, crossing Jimi River en route.

Road. Good except near the Jimi River crossing where the grade is steep. Bridge poor. Since replaced.

Rest House. Adequate.

3rd. March. From KOINAKELI a steep ascent to PINE River for thirty minutes. Party swam and washed. A steep ascent for one hour and fifteen minutes to YINSUCEMA Rest House.

Road. Fair but with bad grade.

Rest House. Adequate.

4th. March. Departed YINSUCEMA at 0900 hours and after climbing steeply for one hour arrived at BOKAPAI Rest House one and one half hours later.

Road. Very fair except for initial climb.

Rest House. Adequate.

- 5th. March. From BOKAPAI to SUWENAI Rest House four hours walk. Some supplies were left at BOKAPAI in charge of two members of the R.P.A.N.G.C.
Road. New road was not yet complete and the track was poor until the completed section was reached. thereafter good.
Rest House. New and quite fair.
- 6th. March. From SUWENAI we followed the head of the PINT river and after two hours walk reached the crest of the Bismark Range. Then following a steeply descending ridge arrived at KINIBONG one and one half hours later. From there we left the ridge and descending sharply crossed a small creek to the west and ascended to a ridge and camped. (No.1.)
Road. Poor. Mainly Native track.
- 7th. March. Followed a native track along the Bismark Range in a Westerly direction maintaining height generally. For six hours. Arrived at KUMHEP gold mining camp of Mr. J. MacKinnon. Met District Officer, Mining District, Mr. E. Galloway, Mr. J. Battersby, O.I.C. Aione Patrol Post and Mr. B. O'Parrol, O.I.C. Simal Patrol Post. Remained overnight as guest of Mr. MacKinnon whose hospitality was much appreciated.
- 8th. March. From KUMHEP to SIMAI Patrol Post, via poorly made road. six hours.
- 9th. March. Patrol Rests. Discussions re administration of KAIRONG Valley.
- 10th. March. Departed SIMAI Patrol Post and crossed over SIMAI - KAIRONG divide and camped at the head of the KAIRONG river two and one half hours later, in light rain. (Camp No.2)
- 11th. March. Returned SIMAI Patrol Post convinced that as KAIRONG Valley only about two hours from SIMAI Patrol Post it should be administered from there.
- 12th. March. At SIMAI Patrol Post. Mr. Foley and Dr. Petruski departed via aircraft to Aione en route Mount Hagen. Messrs Galloway and Battersby likewise by air to Aione. Patrol gear repacked and prepared for early start on the thirteenth.
- 13th. March. From SIMAI Patrol Post the patrol went almost due South and one and one half hours reached the crest of the Bismark Range. Followed this crest for five and one half hours in a generally South-East direction and made camp at AIRBOK at the head of the AIRBOK river. (Camp No.5)
Made contact with the people in the area. Difficulties in interpretation but firewood and food in quantity purchased. Estimate population 700.
- 14th. March. Broke camp in light rain at 0800 hours and after a hectic five hour walk over native tracks arrived at SERBANT Rest House.
Roads. Four native tracks with many steep grades.
Rest House. Newly built and Adequate.
- 15th. March. Initial Census of the AMBIAN people assembled at SERBANT. People very shy and estimate no more than half turned up. Trade with natives and aims and policies of the Administration explained to the people.
- 16th. March. Two hours walk today to KAREMBELAMP Rest House. Initial Census of the SERBANT AND LORON people. Census fairly complete I think. Talks on Administration aims and policy given.
Road. In process on construction. Will be good.
Rest House. Newly built. Good.
- 17th. March. Two hours easy walk to BOKAPAI. Census revision on the KUREMAGA group assembled here. In all 108 new names added.
Road. Very fair.
Rest House. Adequate.
- 18th. March. To SUWENAI over newly completed road in two hours easy walk. Some gear left at BOKAPAI in charge of Police Constable and carriers who were reported sick. Initial census and talks with natives on aims etc..
Road. Easily the best graded road in the area. (of.5th March)
Rest house. New and quite fair.
- 19th. March. A three hours walk at a not unpleasant speed from SUWENAI to YIMUGERA. Revision of the AMBUBANI group census.
Road. Good but with steep descent to YIMUGERA.
Rest House. Adequate.
- 20th. March. From YIMUGERA to KOINAMEI Rest House in one hour and twenty minutes. Census revised of the TSEBA group assembled here.
Road. Fair but with steep descent and ascent.
Rest House. Adequate.
- 21st. March. From KOINAMEI to KOMPAL two hours walk. Census revised of the KAUBASI people assembled here. A very difficult people to census or do anything with. At night walked to KARENG Rest House to talk with the Rt. Rev. D. Hand, Bishop of New Guinea, The Rev. P. Robin Anglican Missionary and Mr. T. Watson a Lay Mission worker. Returned to KOMPAL.
Road. Fair but follows main ridge and is not graded.
Rest House. Fair but in need of repairs.

22nd. March. Forty minutes walk to KAHNE Best House today. Census revised of the MASHAN people assembled here.

Road. Good except for part in disrepair due to recent land slides.

Best House. Good.

23rd. March. From KAHNE to KWIM two and a half hours walk. Census revision of the FOGAN and YISINAN groups assembled here.

Road. Fair but not well graded.

Best house. Fair.

24th. March. From KWIM to FOGHAN two hours and twenty minutes.

Road. Fair.

Best House. Very good.

25th. March. From FOGHAN to Jial Patrol Post four hours walk crossing the Jial River.

Road. Fair but steep grades near the Jial River. Bridge good native cone type.

(N.B. Where description of Best House is made this included Police quarters etc.)

End of Diary.

BRIVE AFFAIRS.

Generally the native situation on the North Hill of the Jial River is good. The people are not nearly contacted generally but it is only during the past three years - since the establishment of the Jial Patrol Post - that any continuous contact has been maintained with these people.

At the time of the establishment of this Post the native people were in an extremely unsettled state. One group, the ANSIRAKHI people of THUNDA, were actually living on the South side of the Jial River at KWIM and very other groups were displaced by fighting. As this fighting had taken place well after Administration contact (1955-56) the people were resettled on their traditional land, after the establishment of the Jial Patrol Post, and all boundaries were clearly marked.

These boundaries appear to have been well observed and I feel that we can now expect the situation to remain satisfactory. There may be isolated cases of 'boundary hopping' similar to a complaint brought to my attention by the THUNDA people of KODAMEI against a man of the SAUSASHI group of KOPIAI. This man was alleged to have overstepped the mark in a search for pasture etc. In both his own people and the THUNDA people were not over antagonistic about this breach, and the KOPIAI Village Officials offered to stand for the culprit's good behaviour in the future no Court action was taken. It was felt that any action in Court would lead to the 'raking up of old scores' which would be better left to die. However a close watch will be kept on the area to detect any similar breaches of the boundary marks.

While it can be said that the boundaries between groups are settled and will cause little future trouble, relations between groups are still mutually hostile. This is to be expected between groups that so recently have been in actual warfare. With more patrolling and attention however it is to be hoped that this mutual suspicion will die out. To this end any inter-group disputes were urged to be brought to the Administration Officers for settlement in their initial stages. It is felt that only by a realization that there is but one law common to all and administered with impartiality can these people be encouraged to act with reason rather than their highly volatile emotions.

The KAVASSI people at KOMPALI deserve special note. They are a relatively large group (652) occupying a restricted area of land. To the West they are bounded by the TSEMA group at KUISASHI and to the East by the KIPANAN people at KASHI. To the South the Jini River forms a natural boundary as does the Siamak Range to the North. The TSEMA and KIPANAN people are mutually hostile toward the KAVASSI due to age old land disputes. The desire to expand on the part of the KAVASSI is the main cause of this hostility and with the advent of the Administration their territorial ambitions have been severely curtailed.

This has left the KAVASSI people - who are indeed likely to become short of land as they have a high birth rate and a low death rate relatively in the area - feeling that nobody loves them. And indeed the truculent attitude of these people makes it hard for anyone to love them. To some extent this attitude is shared by the IANAN people of TCHIAN who also have had their ambitions curtailed, though their attitude is anything but hostile. It is significant that the Anglican Mission has had want of it's success in these two groups. The feeling being: "We don't look like realizing our ambitions through the Administration. Let's see what this other organization have to give us."

A further unfortunate aspect is that the TSEMA people could well spare some of their land, and, had feeling not run so high in the past, some measure of reorganization might have been possible. But with the present attitudes I can see no possibility of the TSEMA people selling any land for KAVASSI resettlement.

It was noticed that many people, said to belong to the GANE group, who had previously been living in the area concerned, have returned to their

own land on the Sibatoc fall of the Bismark Ranges. I could find no single satisfactory reason for this move but feel that perhaps the demands of the Public Works program at the Jini River Station have decided them that they would be better off further away. If this is so then one can only hope that they will find their share of local work in the Siskri area when active patrolling starts there. A close liaison will be kept between this Post and the Sibatoc Patrol Post to ensure that these people do not "wander in the wilderness" without effective contact from either side.

There appears to be an excellent spirit among these groups initially contacted by this Patrol. Three Rest Houses, previously not used by Administration Officers have been constructed, (at SOWHEAL, SEMENT and HANWASIANW,) with appropriate Police accommodation and roads have been made linking these Rest Houses to the main Patrol roads. The people at SEMENT were somewhat shy but this is to be expected for the first two or three visits.

The people to the East of the HAKARINY river and in the AKON Valley though not contacted and only contacted briefly seemed very friendly towards the Patrol and did all in their power to assist it. I expect no difficulties at all in extending complete Administration influence to these areas.

Credit for much of this good feeling must be given to Const. KIKON Reg. No. 8832, who has been in this area concerned with Rest House construction supervision and on Patrol road work. Though a coastal man he speaks the language fluently and has an amazing local knowledge. Perhaps, most fortunately of all, he has not allowed his obviously keen interest in the area to involve him in local political or matrimonial affairs. This example of friendly firmness which has been displayed must have impressed the newly contacted people with a fine ideal of the Administration.

The establishment of the SIBAL Patrol Post will do much to bring to these hitherto isolated people well within the Administrative orbit. No longer will it be possible to move further afield to avoid contact. Although it must be said that the people do not appear to wish to avoid contact at all. The KAIROK Valley, a good three day walk from this Station but only a day's walk from its mouth to the Sibatoc Station with the main population even nearer, can not be controlled effectively. Such was not the case when it was controlled from this Station.

The people to the East of the KAIROK valley and on the Jini fall of

the Hawks will be best administered from this Post in my estimation. While it is true that they may be somewhat more easily contacted from the SIBBY Post and have affiliations in that area no special difficulties should be experienced in carrying out the present program of gradually extending the present graded sand and walking tracks into the area. This will take time, but the Officer-in-Charge, Sibal Patrol Post, will have plenty to do in the establishment of his Station and the relatively more consolidated position of the Sibal Patrol Post should enable it to extend more than could be possible from the Sibal Post.

In all, then, it can be said that, from being a trouble spot a few years ago this area is now well settled. This of course is no accident but is due to the detailed and painstaking care these people have received during the past few years. It should be possible now to proceed with the more forwarding aspects of Administration in the Area - training of Aid Post Ambulances and construction of Aid Post and extension of schooling etc., as well as to fully consolidate these 'fringe' areas as yet not fully under Administration influence.

CENSUS

The Census revision and the initial census of these places not previously recorded proceeded smoothly and with a minimum of fuss. In all 295 'new names' were added to the census total as well as 301 names of people initially recorded.

In some cases duplication of names was encountered. This is to be expected in an area which in addition not over-crowded to census recording, provides each individual with two or three names. The duplication of some of these duplications no doubt accounts for the slow rate of increase. It must be expected that a small number of duplications still exist and that a further small number of 'new names' are yet to be added.

Births (233) exceed deaths (179) by only 54. This seems somewhat low, particularly when it is remembered that a number of infant mortalities were no doubt missed due to the lapse between census revisions.

The revised figures show a total increase of 511 from 2501 to 3012. This includes 54 by excess of Births over Deaths, 295 'new names' and 301 initially censused. So in all the natural increase among those groups in which the census was merely revised is 17 or about .7%. That is an unusual increase of not quite .3%. This does not seem very high but is accounted for

The health in the area visited is far from good. About sixty per-cent of the people seen require some attention or other. Mainly for small cuts and sores.

However a respiratory illness seems to account for most of the deaths that were noted.

Although the extended Patrol was accompanied by the District Medical Officer it was not found possible to arrange for a complete medical inspection of the people. Many cases were treated however by the Medical personnel, but of course there were many who did not avail themselves of this opportunity. The area badly needs a detailed and thorough medical inspection. Unfortunately the staff position at the Jini Aid Post does not even enable us to send a Medical Officer to the area to attend to the many minor illnesses.

There are no Aid Posts at all in the area visited and the people have not yet reached the stage where suitable candidates for medical training can be readily found. However one young man who can speak a little Pidgin English volunteered for training. He is TANI of NUNE. At present he is at the Jini Patrol Post in an effort to improve his Pidgin and also that an evaluation of his character may be made. If he seems suitable the subject of his medical training will be taken up at a later date.

The position in the area visited merely highlights the general need of some central medical authority in the Jini Valley. Until there is one central control in the Jini, together with a European Officer to supervise the work of the various Aid-Post Orderlies then I fear we can expect but little improvement in the general situation.

EDUCATION.

There are no schools as yet in the area visited. However three young boys are attending the Administration Station school at the Jini Patrol Post. Their progress is reported as satisfactory and they appear very keen. They are now in their second year of school.

The Anglican Mission have started the construction of two schools in the area, one at COBANI and the other at KOPFIAI. The teaching will be done by trained Papuans and Solomon Islanders under the periodic supervision of European Missionaries. It is hoped to bring these schools to certified standard, with teaching in English, within two years. These schools should do much to help forward the people in the area.

MISSION.

Three members of the Anglican Mission, based in Bulang but working from Aloue and S'kabel, have Restricted Area Permits to work in the South-Eastern portion of the area Patrolled. They are the Rt. Rev. S. Paul, Bishop of New Guinea, Rev. Fr. P. Robin and Mr. T. Watson.

They are new to this area having been active since late January of this year only. Apparently their welcome in the area has not been so warm as they would have liked in all places but school buildings have been erected at KOMPAL and TOMBAN. As has been mentioned under Native Affairs these two groups are somewhat out of touch with the rest of the people in the area. For this reason I would expect that expansion of their activities would be somewhat harder than if they had started in a more generally accepted area. This has been the case at KOMPAL at any rate where the people from KANSE expressed their inability to send their children the short distance to KOMPAL for schooling on the grounds that the two groups were age old enemies. It can only be hoped that either this Mission will be able to supply a number of schools to cater for these people or, better still, manage to break down the actual feeling of hostility.

All three of the Missionaries holding permits were visited on this patrol at KANSE. They informed me that their main interest at this stage was schooling, mixed of course with the spreading of the Gospel. As the teachers they have seen to be reasonably well qualified (they all speak and write English) I have no doubt that Mission activities in this area could be a welcome addition to the Administration of the area.

VILLAGE OFFICIALS.

All the village Officials within the area were co-operative and helped the patrol as much as they were able. They appear to have been well selected on the whole and represent the most important natural leaders within the area. In all assembly points the duties and powers of the Officials was outlined and the Officials were told not to hesitate to call a spade if their lawful orders were neglected.

At SUNDHAI and KANDUHIANG New Officials were selected and their appointment will be recommended in a separate memorandum. The replacement of the Inhuai at BOYAPI (deceased) will also be recommended in the same memorandum. Officials at SENSANI were not recommended as I feel that more knowledge of the groups in that area is desirable before appointment.

SEARCH FOR WEAPONS, EXPLOSIVES AND BOMBING

DATE	TIME	SEARCHED	INDEXED	FILED	INITIALS
1944	10:00	SEARCHED	INDEXED	FILED	ML
1944	10:15	SEARCHED	INDEXED	FILED	ML
1944	10:30	SEARCHED	INDEXED	FILED	ML
1944	10:45	SEARCHED	INDEXED	FILED	ML
1944	11:00	SEARCHED	INDEXED	FILED	ML
1944	11:15	SEARCHED	INDEXED	FILED	ML
1944	11:30	SEARCHED	INDEXED	FILED	ML
1944	11:45	SEARCHED	INDEXED	FILED	ML
1944	12:00	SEARCHED	INDEXED	FILED	ML
1944	12:15	SEARCHED	INDEXED	FILED	ML
1944	12:30	SEARCHED	INDEXED	FILED	ML
1944	12:45	SEARCHED	INDEXED	FILED	ML
1944	13:00	SEARCHED	INDEXED	FILED	ML
1944	13:15	SEARCHED	INDEXED	FILED	ML
1944	13:30	SEARCHED	INDEXED	FILED	ML
1944	13:45	SEARCHED	INDEXED	FILED	ML
1944	14:00	SEARCHED	INDEXED	FILED	ML
1944	14:15	SEARCHED	INDEXED	FILED	ML
1944	14:30	SEARCHED	INDEXED	FILED	ML
1944	14:45	SEARCHED	INDEXED	FILED	ML
1944	15:00	SEARCHED	INDEXED	FILED	ML
1944	15:15	SEARCHED	INDEXED	FILED	ML
1944	15:30	SEARCHED	INDEXED	FILED	ML
1944	15:45	SEARCHED	INDEXED	FILED	ML
1944	16:00	SEARCHED	INDEXED	FILED	ML
1944	16:15	SEARCHED	INDEXED	FILED	ML
1944	16:30	SEARCHED	INDEXED	FILED	ML
1944	16:45	SEARCHED	INDEXED	FILED	ML
1944	17:00	SEARCHED	INDEXED	FILED	ML
1944	17:15	SEARCHED	INDEXED	FILED	ML
1944	17:30	SEARCHED	INDEXED	FILED	ML
1944	17:45	SEARCHED	INDEXED	FILED	ML
1944	18:00	SEARCHED	INDEXED	FILED	ML
1944	18:15	SEARCHED	INDEXED	FILED	ML
1944	18:30	SEARCHED	INDEXED	FILED	ML
1944	18:45	SEARCHED	INDEXED	FILED	ML
1944	19:00	SEARCHED	INDEXED	FILED	ML
1944	19:15	SEARCHED	INDEXED	FILED	ML
1944	19:30	SEARCHED	INDEXED	FILED	ML
1944	19:45	SEARCHED	INDEXED	FILED	ML
1944	20:00	SEARCHED	INDEXED	FILED	ML
1944	20:15	SEARCHED	INDEXED	FILED	ML
1944	20:30	SEARCHED	INDEXED	FILED	ML
1944	20:45	SEARCHED	INDEXED	FILED	ML
1944	21:00	SEARCHED	INDEXED	FILED	ML
1944	21:15	SEARCHED	INDEXED	FILED	ML
1944	21:30	SEARCHED	INDEXED	FILED	ML
1944	21:45	SEARCHED	INDEXED	FILED	ML
1944	22:00	SEARCHED	INDEXED	FILED	ML
1944	22:15	SEARCHED	INDEXED	FILED	ML
1944	22:30	SEARCHED	INDEXED	FILED	ML
1944	22:45	SEARCHED	INDEXED	FILED	ML
1944	23:00	SEARCHED	INDEXED	FILED	ML
1944	23:15	SEARCHED	INDEXED	FILED	ML
1944	23:30	SEARCHED	INDEXED	FILED	ML
1944	23:45	SEARCHED	INDEXED	FILED	ML
1944	24:00	SEARCHED	INDEXED	FILED	ML

* N.B. None are recommended only.

ARMED AND DANGEROUS

A. ML.

B. ML.

ARMED LAND

There is no armed land in the area visited.

Reg. No.	NAME	Rank	Description
5136	KONIA	Constable	A able member. Acted as H.C.G. in later portion of Patrol. At all times alert. Is set down for H.C.G. course as soon as possible.
8552	KAMEN	Constable	An invaluable member of this Patrol due to local knowledge well applied. Definitely H.C.G. Material.
9469	KORCH	Constable	A young member of rather less than average ability but may improve with careful supervision and training.
9819	HICK	Constable	A young member without any outstanding characteristics. Will improve with experience perhaps.

The Patrol was accompanied in part by five members of the Mount Hope detachment H.P. & H.C.G.

VILLAGE POPULATION

1930

Blair

