

# Agisoft PhotoScan

Processing Report  
11 November 2014



# Survey Data

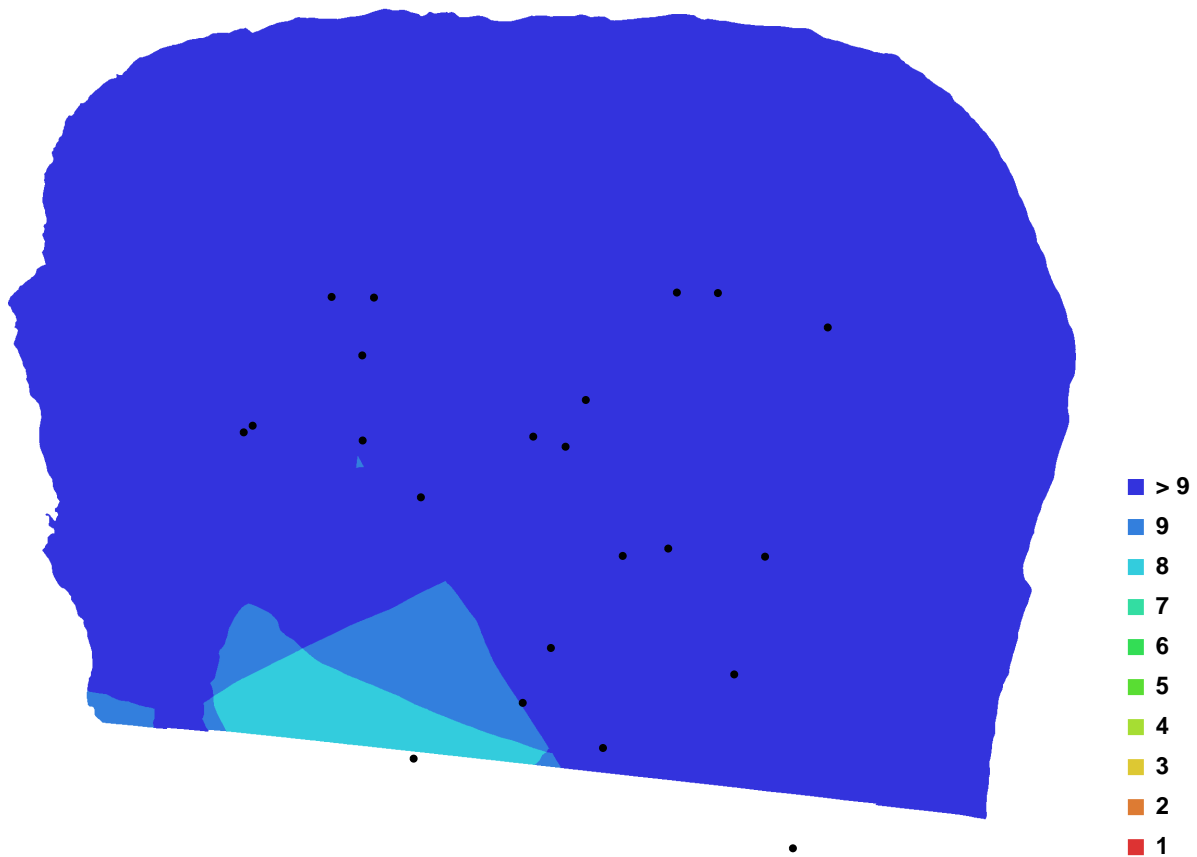


Fig. 1. Camera locations and image overlap.

Number of images:	26	Camera stations:	26
Flying altitude:	0.89235 m	Tie-points:	55562
Ground resolution:	0.000180303 m/pix	Projections:	140380
Coverage area:	4.89515e-007 sq km	Error:	0.949416 pix

Camera Model	Resolution	Focal Length	Pixel Size	Precalibrated
Canon EOS M (18 mm)	5184 x 3456	18 mm	4.384 x 4.384 um	No

Table. 1. Cameras.

# Digital Elevation Model

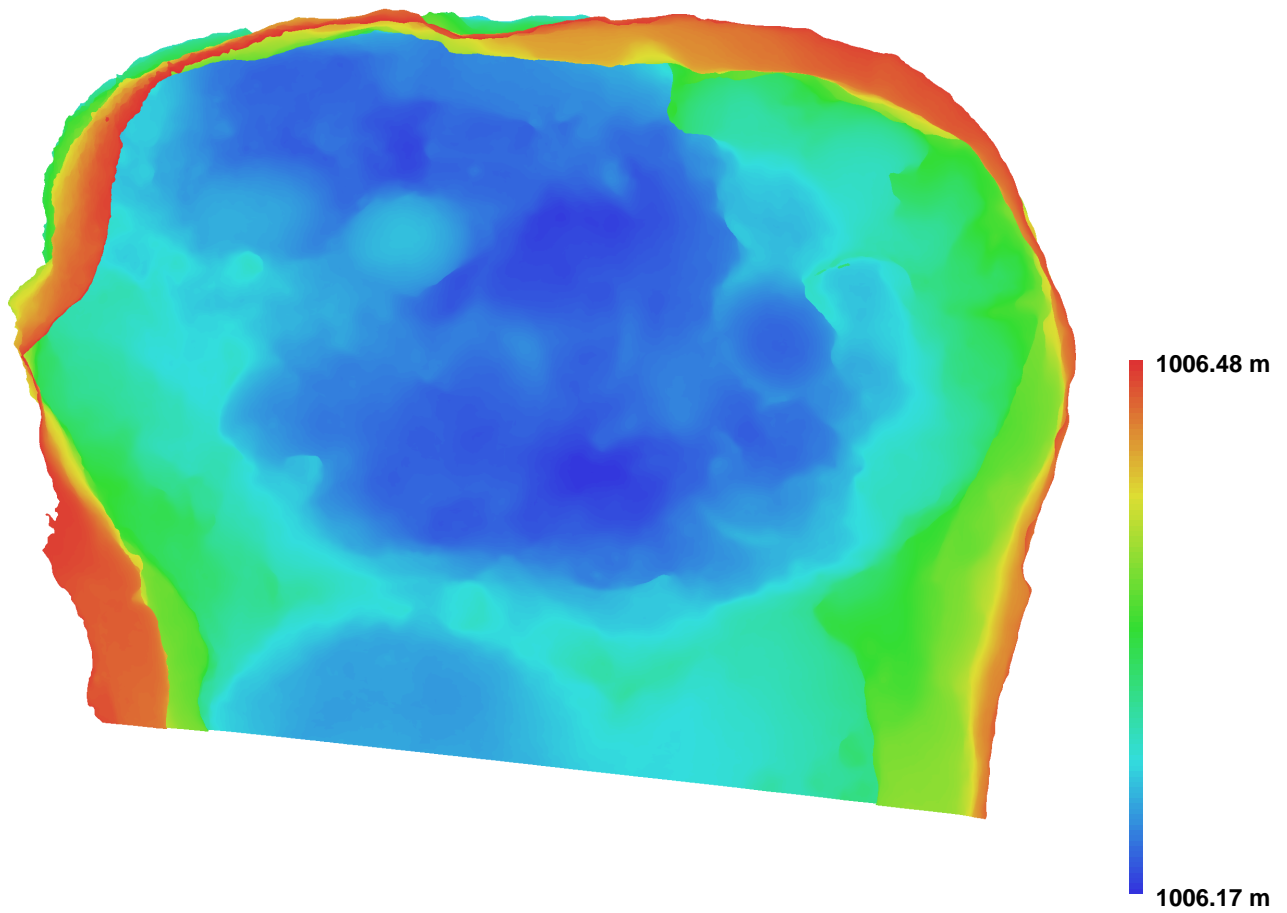


Fig. 2. Reconstructed digital elevation model.

Resolution: 0.00303004 m/pix  
Point density: 108919 points per sq m