

**REPORT AND INDEX OF
UNDERWAY MARINE GEOPHYSICAL DATA**

TUNES EXPEDITION (WOCE-P18C)

LEG 3
=====

R/V Thomas Washington

(Issued November 1991)

**Papeete, Tahiti (31 August 1991)
to
Honolulu, Hawaii (1 October 1991)**

Chief Scientist:

Lynne Talley (Scripps Institution of Oceanography)

Resident Marine Technician - Gene Pillard

Sea Beam Transit Mode

**Post-Cruise Processing and Report Preparation by the
Geological Data Center, Scripps Institution of Oceanography
La Jolla, California 92093**

**Data Collection and Processing Funded by:
NSF Grant Number OCE89-11587**

**NOTE: This is an index of underway geophysical data edited
and processed after the completion of the cruise leg and is
intended primarily for informal use within the institution.
This document is not to be reproduced or distributed outside
Scripps without prior approval of the chief scientist or the
Geological Data Center, Scripps Institution of Oceanography,
La Jolla, California 92093.**

GDC Cruise I.D.# 254

INFORMAL REPORT AND INDEX OF NAVIGATION AND UNDERWAY GEOPHYSICAL DATA

Processed by the Geological Data Center
Scripps Institution of Oceanography

Contents:

Index Chart - gives track of cruise leg, dates, ports, and mileage of each type of data collected.

Track Charts - annotated with dates and hour ticks.

Profiles - depth, magnetic anomaly and gravity free air anomaly vs. distance. Sections of track having subbottom profile (airgun or watergun) records have a wide black line along the bottom of the profile. Sections having Sea Beam are indicated by a narrow black line.

Sample Index - list of beginning and end times and positions of all underway records as well as all other samples and measurements (geology, biology, physical oceanography, etc.) collected on the cruise leg.

NOTE: One or more of the underway data types may not be collected on a given cruise leg.

For information on the availability and reproduction costs of data in the following forms, contact S. M. Smith, Curator, Geological Data Center, Scripps Institution of Oceanography, La Jolla, CA 92093-0223. Phone (619)534-2752. Fax (619)534-5306.

1. Navigation listing with times and positions of course and speed changes, fixes and drift velocity.
2. Depth compilation plots - compilation plots at the traditional scale of 4in/degree longitude (1:1,000,000) are no longer produced for Sea Beam cruises. Custom plots may be requested of vertical beam (2 $\frac{2}{3}$ degree beam width) depths retrieved at one minute intervals of ship time.
3. Plots of depths, magnetics or gravity profiles along track - custom plots at various map and profile scales on Mercator projection may be requested.
4. Separate time series files of navigation, depth, gravity and magnetics as well as these data merged in the MGD77 Exchange format on magnetic tape.
5. Microfilm or Xerox copies of:
 - a. Echosounder records - 12 and 3.5 kHz frequency
 - b. Subbottom profiler records
 - c. Magnetometer records
 - d. Underway data log book

SIO Sea Beam Data Information

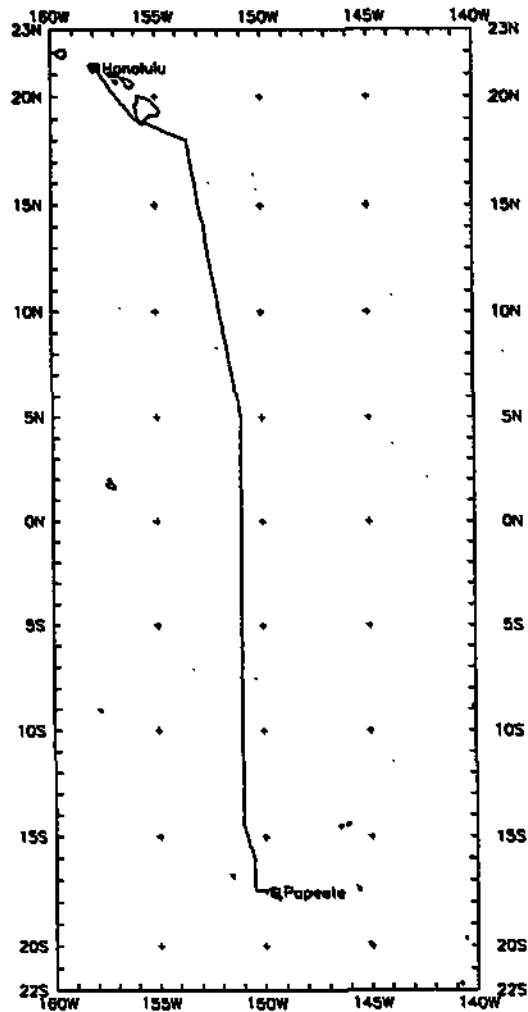
The following forms are available, subject to approval of the cruise leg chief scientist:

- 1) Archive copy of contour swath books generated in real time on board ship available for inspection at the data center.
- 2) Microfilm (35mm flowfilm) containing swath books plus, for some cruises, the Sea Beam monitor record and navigation list.
- 3) Sea Beam merged tapes - Sea Beam data merged with navigation. (Navigation is edited to the extent that DR courses and speeds are edited and poor fixes are removed after inspection of drift vectors between fix pairs. No editing is done on the basis of adjusting to overlapping Sea Beam swaths.)
- 4) Archive contour plots - 16"/degree chart scale, with contour interval nominally 50m, are generated for all transit lines. Some survey areas are plotted at appropriate scales as well. Available for inspection at data center; additional copies may be generated from plot files stored on tape.
- 5) Custom generated plots of Sea Beam swaths on Mercator projection in four colors at variable plot scales and contour intervals. There are provisions to adjust positions of individual track lines and to edit out beams (bad data or overlapping data on inside of turns).

Revised October 1986

NOTE: Sea Beam data collection and processing were not funded by extramural grants on this leg. Instead, they have been collected and processed in "transit mode" by the SIO Shipboard Technical Support group as part of an experimental program to optimize ship usage and to increase the amount of available Sea Beam data. At this time, policies for processing these data are under review. For more information, contact the Geological Data Center curator.

April 1989



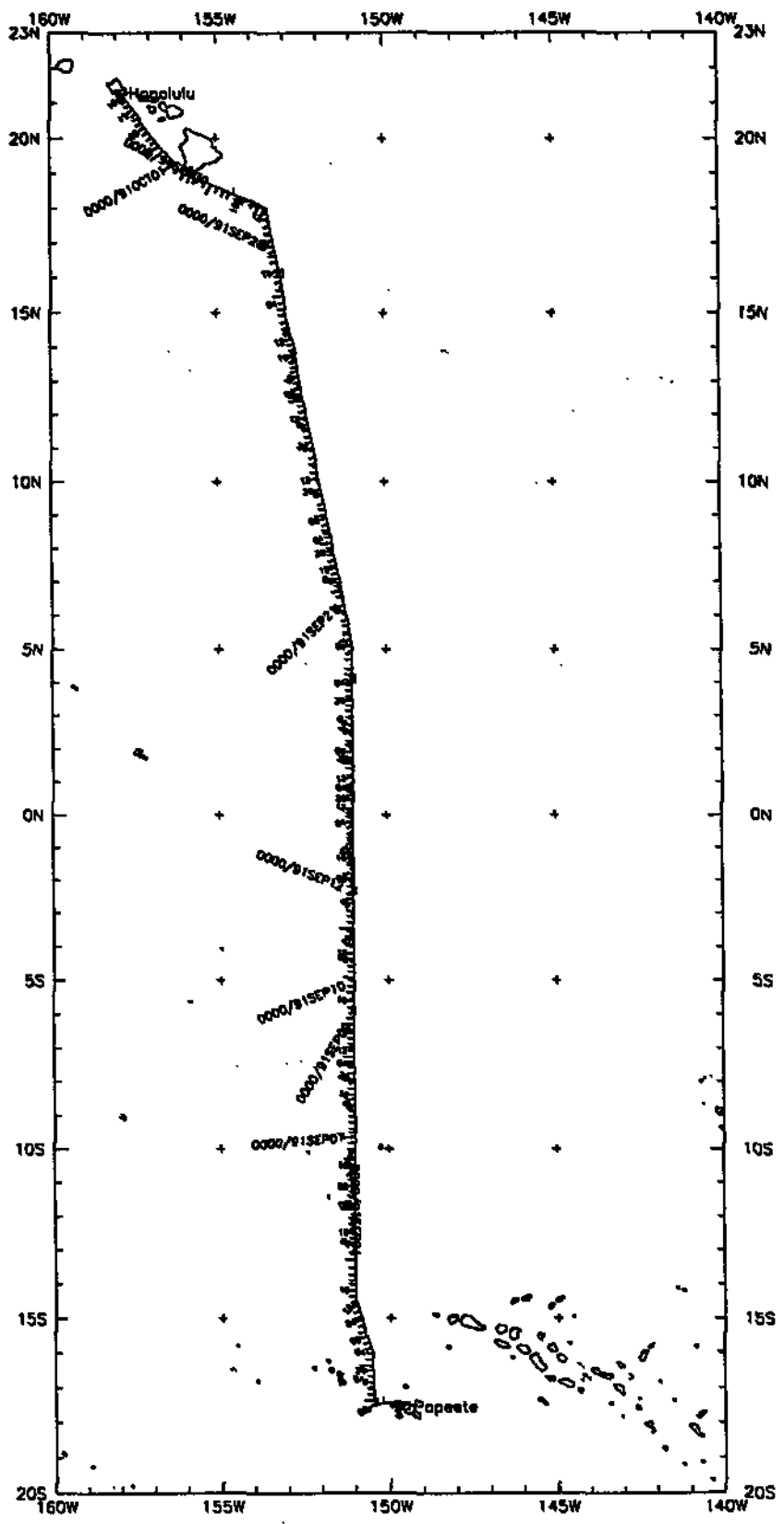
TUNES LEG 3 (WOCE-P16C) (TUNE03WT) ✱

TUNES EXPEDITION LEG 3 (WOCE-P16C)

CHIEF SCIENTIST: Lynne Talley
Scripps Institution of Oceanography
PORTS: Papeete, Tahiti - Honolulu, Hawaii
DATES: 31 August - 1 October 1991
SHIP: R/V T. Washington

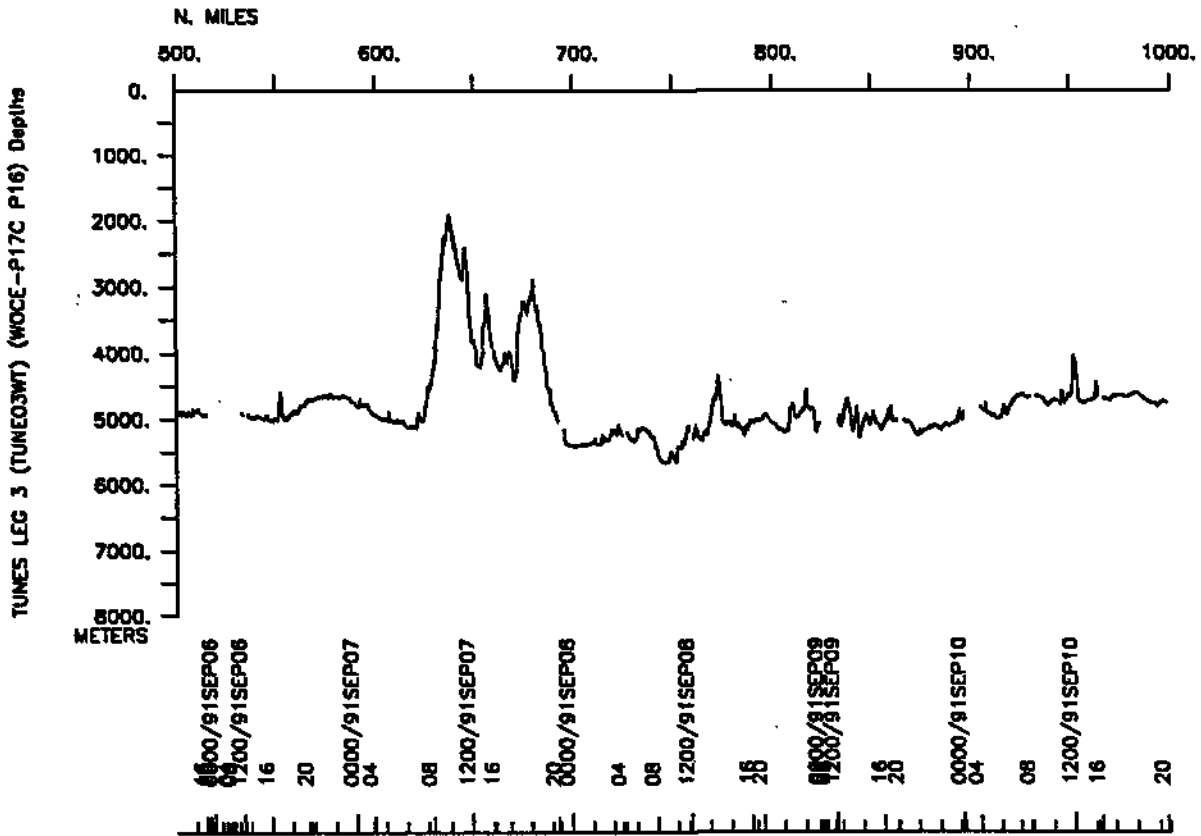
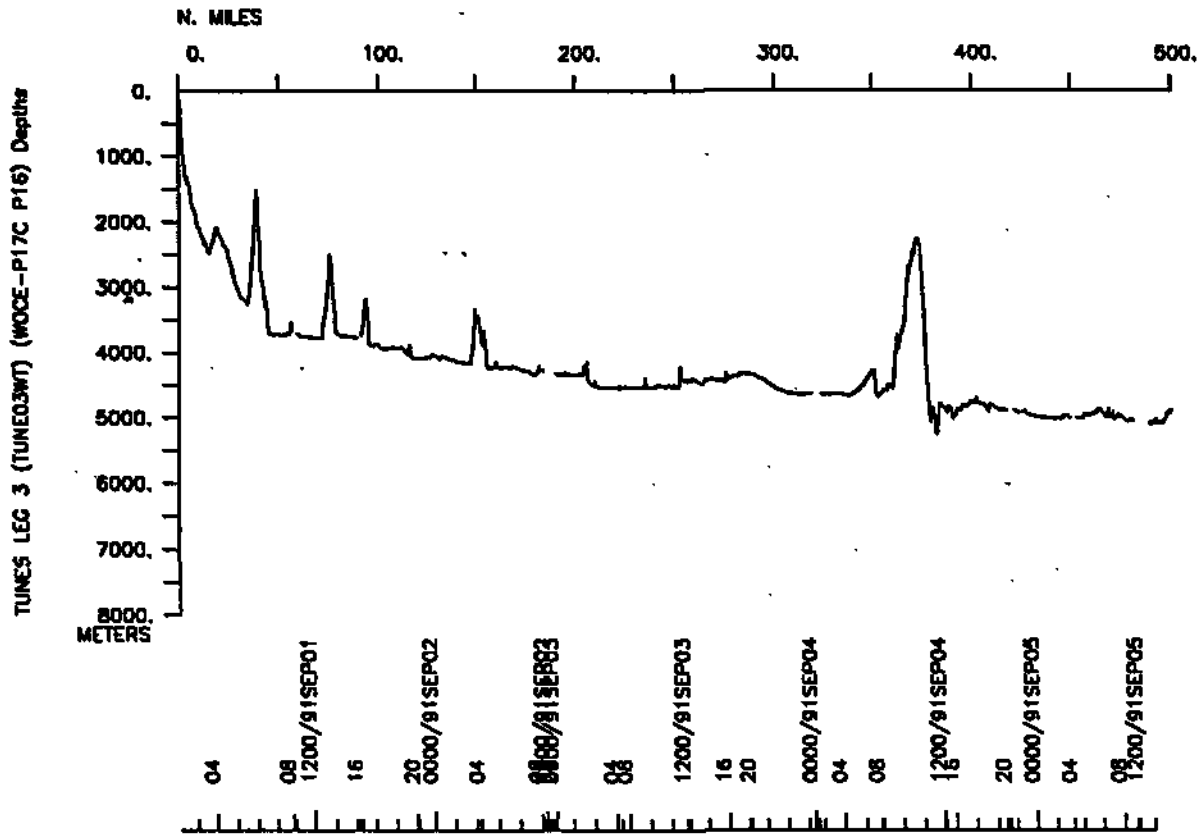
TOTAL MILEAGE OF UNDERWAY DATA COLLECTED

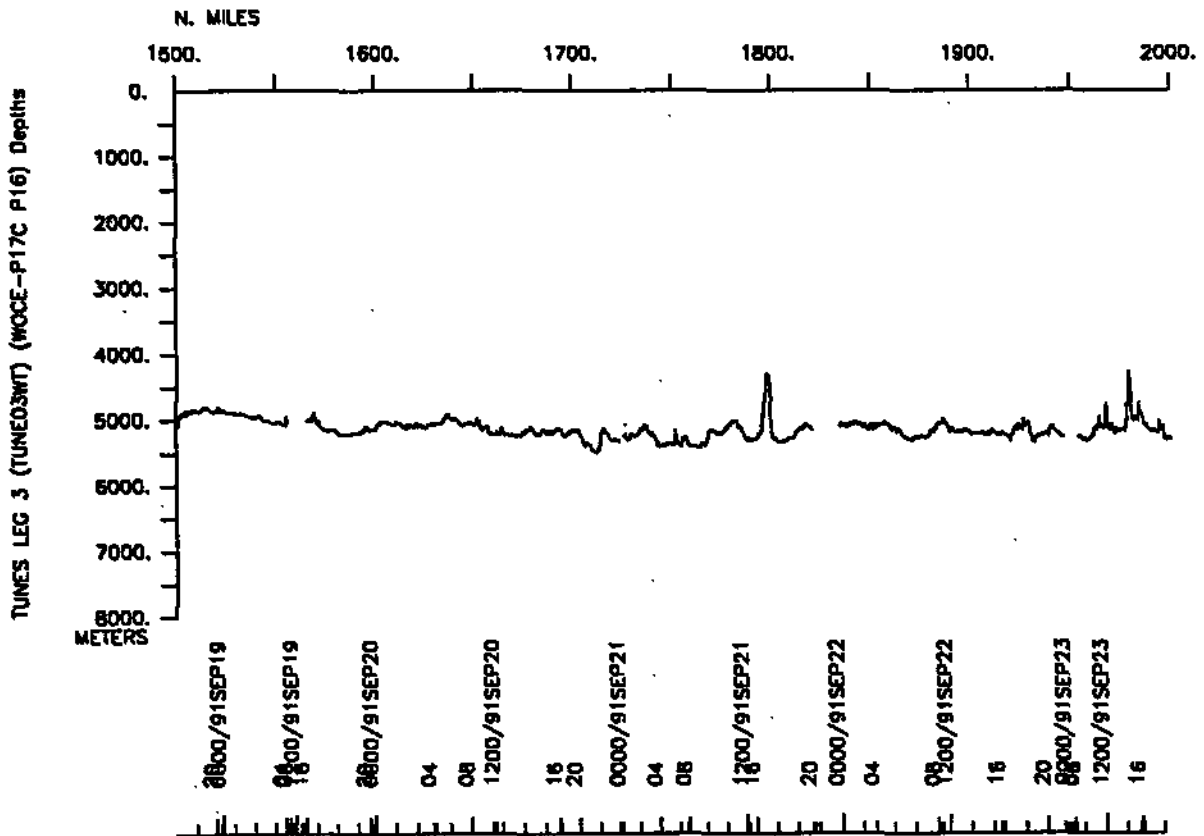
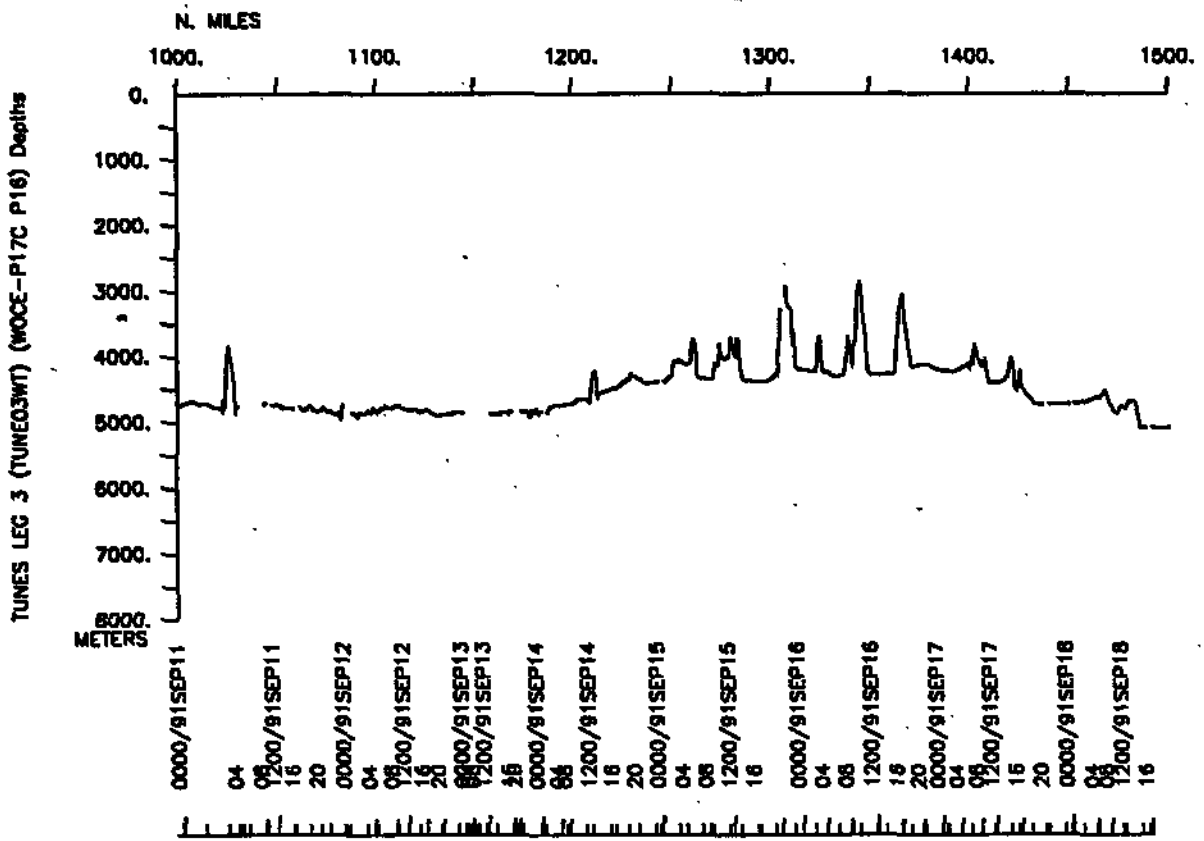
Cruise - 2841 miles	Magnetics - none collected
Bathymetry - 2691 miles	Seismic Reflection - none collected
Sea Beam - 2691 miles	Gravity - collected but not processed

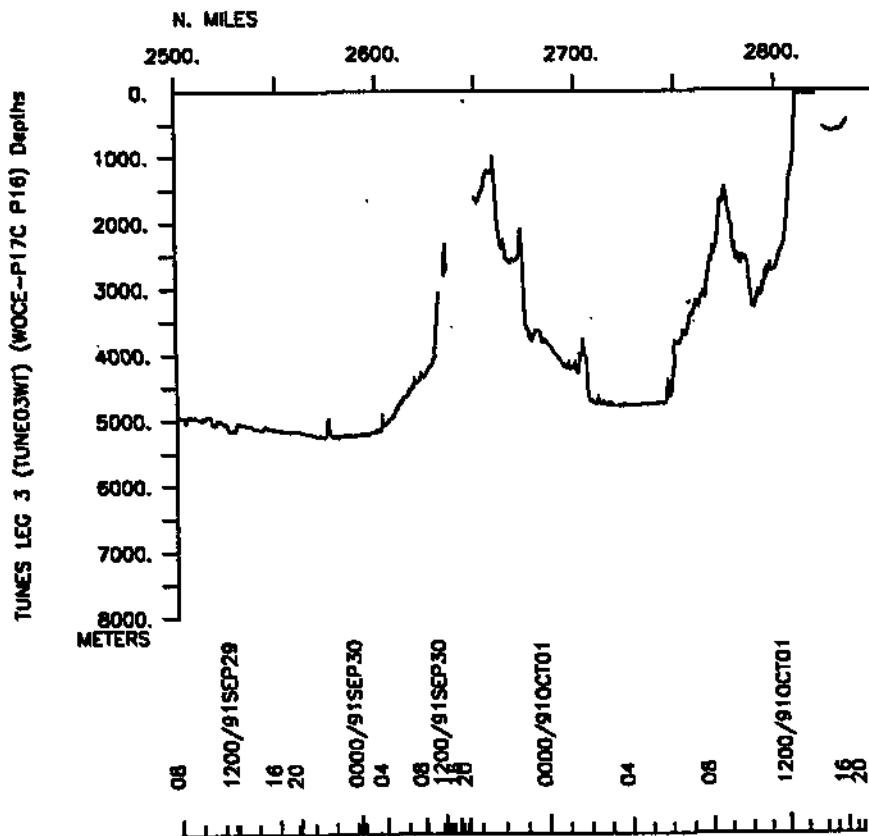
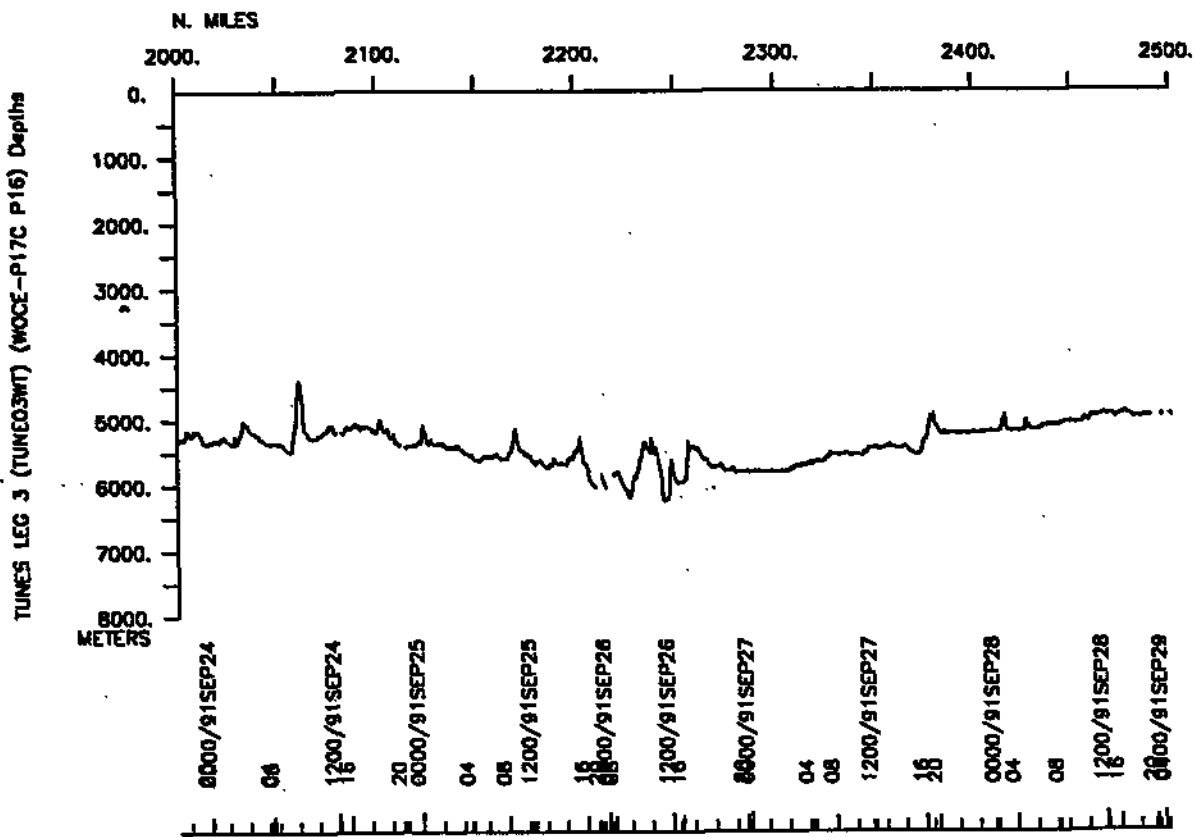


TUNES LEG 3 (WOCE-P16C) (TUNE03WT)

*







S.I.O. SAMPLE INDEX

(Issued November 1991)

TUNES EXPEDITION

(WOCE-P16C)

Leg 3

R/V T. Washington

Papeete, Tahiti (31 August 1991)
to
Honolulu, Hawaii (1 October 1991)

Chief Scientist:

Lynne Talley (Scripps Institution of Oceanography)

The Sample Index is a first level interdisciplinary listing of time, position, sample identification and disposition of all samples, records and measurements collected on this cruise leg. The index data are encoded at sea by the resident marine technician and processed on shore by the S.I.O. Geological Data Center shortly after the completion of the cruise leg.

Positions are interpolated on the basis of sample time by comparison to a single, edited navigation file. Samples beginning at one time and position and ending at another are entered on two consecutive lines. Disposition and sample type are represented by three and four character codes to permit further computer searches on these parameters. (Listings defining these codes are available from the Geological Data Center.)

**** PORTS ****

0200	310891	LGPT B	Papeete, Tahiti	17 32 S	149 34 W	FTUNE03WT
1800	011091	LGPT E	Honolulu, Hawaii	21 18 N	157 52 W	FTUNE03WT

**** PERSONNEL ****

#	**NAME**	** TITLE **	** AFFILIATION **	**CRID**
PECS	POR Talley,L.	Chief Scientist	Scripps Institution	TUNE03WT
PESP	UHI Bahr,F.	Research Assist.	Univ. of Hawaii	TUNE03WT
PESP	WHOI Bond,G.	Research Assist.	Woods Hole Ocean.Inst.	TUNE03WT
PECT	STS Bouchard,G.	Computer Tech	Scripps Institution	TUNE03WT
PEST	OSU Garcia,H.	Student	Oregon State Univ.	TUNE03WT
PESP	GRD Guenther,P.	Specialist	Scripps Institution	TUNE03WT
PESP	OSU Jennings,J.	Staff Res. Assoc.	Oregon State Univ.	TUNE03WT
PESP	UWA Johnson,G.	Post-Doc	Univ. of Washington	TUNE03WT
PESP	GRD Kim,K.K.	Visiting Scholar	Scripps Institution	TUNE03WT
PESP	WHOI Knapp,G.	Staff Res. Assoc.	Woods Hole Ocean.Inst.	TUNE03WT
PESP	LDGO Knudson,C.	Staff Res. Assoc.	Lamont-Doherty Geol.O.	TUNE03WT
PESP	WHOI Landry,P.	Technician	Woods Hole Ocean.Inst.	TUNE03WT
PESP	STS Lopez,L.	Staff Res. Assoc.	Scripps Institution	TUNE03WT
PESP	WHOI MacMurray,C.	Research Assoc.	Woods Hole Ocean.Inst.	TUNE03WT
PEST	SIO McCallister,T.	Student	Scripps Institution	TUNE03WT
PESP	WHOI Mathewson,M.	Research Assoc.	Woods Hole Ocean.Inst.	TUNE03WT
PESP	UWA Quay,P.	Assoc. Professor	Univ. of Washington	TUNE03WT
PESP	WHOI Peltzer,E.	Res. Specialist	Woods Hole Ocean.Inst.	TUNE03WT
PERT	STS Pillard,E.	Resident Tech	Scripps Institution	TUNE03WT
PESP	WHOI Stanley,R.	Research Assoc.	Woods Hole Ocean.Inst.	TUNE03WT
PENT	STS Wells,J.	Marine Tech	Scripps Institution	TUNE03WT
PESP	NOA Wisegarver,D.	Chemist	Nat.Ocean/Atmos Admin.	TUNE03WT

**** NOTES ****

#Ax 'X' in the (B)egin/(E)nd column following the sample code indicates no
#samplw or data recovered. A 'C' indicates continuation of data collection
#from before the beginning or after the end of a particular leg. (Moored
#bottom instruments, for example.) The number appearing in the columns
#between the sample identifier and the disposition code, for many sample
#entries, is the water depth in corrected meters. Positions are in tenths
#of minutes.

#GMT	DDMMYY	LOC	T	SAMP	SAMPLE	DISP			CRUISE
#TIME	DATE	TIME	Z	CODE	IDENTIFIER	CODE	LAT.	LONG.	LEG-SHIP

*** UNDERWAY DATA CURATOR - S. M. Smith ext. 42752 ***

*** ECHO SOUNDER RECORDS ***

0211	010991			MBRM	B SeaBeam monitor r-01	GDC	17-318S	149-352W	sTUNE03WT
1534	050991			MBRM	E SeaBeam monitor r-01	GDC	10-300S	150-597W	sTUNE03WT
1445	060991			MBRM	B SeaBeam monitor r-02	GDC	10-303S	150-590W	sTUNE03WT
2330	170991			MBRM	E SeaBeam monitor r-02	GDC	2-297N	151-000W	sTUNE03WT
0223	180991			MBRM	B SeaBeam monitor r-03	GDC	2-286N	151-001W	sTUNE03WT
2057	270991			MBRM	E SeaBeam monitor r-03	GDC	16-294N	153-123W	sTUNE03WT
2123	270991			MBRM	B SeaBeam monitor r-04	GDC	16-338N	153-132W	sTUNE03WT
1700	011091			MBRM	E SeaBeam monitor r-04	GDC	21-167N	157-528W	sTUNE03WT
0810	010991			DPRT	B 12 khz cast	GDC	17-302S	150-296W	sTUNE03WT
1844	030991			DPRT	E record roll #01	GDC	14-003S	150-599W	sTUNE03WT
2326	030991			DPRT	B 12 khz cast	GDC	13-298S	150-599W	sTUNE03WT
0139	090991			DPRT	E record roll #02	GDC	6-005S	151-000W	sTUNE03WT
0141	090991			DPRT	B 12 khz cast	GDC	6-005S	151-000W	sTUNE03WT
1622	150991			DPRT	E record roll #03	GDC	0-197N	150-598W	sTUNE03WT
1730	150991			DPRT	B 12 khz cast	GDC	0-194N	150-596W	sTUNE03WT
0701	240991			DPRT	E record roll #04	GDC	11-231N	152-127W	sTUNE03WT
1207	240991			DPRT	B 12 khz cast	GDC	11-528N	152-188W	sTUNE03WT
2025	300991			DPRT	E record roll #05	GDC	18-529N	155-395W	sTUNE03WT

*** CONTINUOUS COMPUTER LOGGED GRAVITY ***

0200	310891			GVCR	B Continuous Gravity	GDC	17-322S	149-347W	sTUNE03WT
1800	011091			GVCR	E computer logged	GDC	21-189N	157-531W	sTUNE03WT

#GMT #TIME	DDMMYY DATE	LOC TIME	T Z	SAMP CODE	SAMPLE IDENTIFIER	DISP CODE	LAT.	LONG.	CRUISE LEG-SHIP	
#*** SURFACE SAMPLES ***										
0200	310891			SS** B	Continuous Surface	GRD	17-322S	149-347W	sTUNE03WT	
1800	011091			SS** E	CO2,N2O,CH4	GRD	21-189N	157-531W	sTUNE03WT	
0200	310891			SS** B	Continuous Surface	POR	17-322S	149-347W	sTUNE03WT	
1800	011091			SS** E	Temp computer logged	POR	21-189N	157-531W	sTUNE03WT	
#*** AIR SAMPLES ***										
0200	310891			ASCS B	Continuous Air Sample	WHO	17-322S	149-347W	sTUNE03WT	
1800	011091			ASCS E	CO2	WHO	21-189N	157-531W	sTUNE03WT	
0200	310891			ASCS B	Continuous Air Sample	GRD	17-322S	149-347W	sTUNE03WT	
1800	011091			ASCS E	CO2,N2O,CH4	GRD	21-189N	157-531W	sTUNE03WT	
0200	310891			ASCS B	Continuous Air Sample	GRD	17-322S	149-347W	sTUNE03WT	
1800	011091			ASCS E	Cfc	GRD	21-189N	157-531W	sTUNE03WT	
#*** CURRENT MEASUREMENTS ***										
0200	310891			CM** B	Continuous ADCP	UHI	17-322S	149-347W	sTUNE03WT	
1800	011091			CM** E	computer logged 500M	UHI	21-189N	157-531W	sTUNE03WT	
#*** CONDUCTIVITY, TEMPERATURE, DEPTH ***										
0817	010991			TDCT B	221-1	3579M	WHO	17-303S	150-296W	sTUNE03WT
1058	010991			TDCT E	transmissometer,O2		WHO	17-305S	150-279W	sTUNE03WT
1413	010991			TDCT B	222-1	3735M	WHO	17-003S	150-299W	sTUNE03WT
1717	010991			TDCT E	transmissometer,O2		WHO	16-585S	150-297W	sTUNE03WT
2031	010991			TDCT B	223-1	4023M	WHO	16-300S	150-297W	sTUNE03WT
2313	010991			TDCT E	transmissometer,O2		WHO	16-299S	150-307W	sTUNE03WT
0219	020991			TDCT B	224-1	3380M	WHO	15-597S	150-299W	sTUNE03WT
0502	020991			TDCT E	transmissometer,O2		WHO	15-593S	150-305W	sTUNE03WT

#GMT #TIME	DDMMYY DATE	LOC TIME	T Z	SAMP CODE	SAMPLE IDENTIFIER	DISP CODE	LAT.	LONG.	CRUISE LEG-SHIP
1331	020991			TDCT B	225-2	4260M	WHO 15-315S	150-393W	STUNE03WT
1629	020991			TDCT E	transmissometer,02		WHO 15-314S	150-394W	STUNE03WT
0422	030991			TDCT B	226-1	4460M	WHO 15-000S	150-501W	STUNE03WT
0725	030991			TDCT E	transmissometer,02		WHO 15-003S	150-502W	STUNE03WT
1051	030991			TDCT B	227-1	4375M	WHO 14-297S	151-000W	STUNE03WT
1359	030991			TDCT E	transmissometer,02		WHO 14-307S	151-002W	STUNE03WT
1712	030991			TDCT B	228-1	4260M	WHO 14-001S	151-001W	STUNE03WT
2012	030991			TDCT E	transmissometer,02		WHO 14-006S	151-002W	STUNE03WT
2329	030991			TDCT B	229-1	4625M	WHO 13-298S	151-001W	STUNE03WT
0239	040991			TDCT E	transmissometer,02		WHO 13-307S	151-016W	STUNE03WT
0548	040991			TDCT B	230-1	4529M	WHO 12-597S	151-001W	STUNE03WT
0852	040991			TDCT E	transmissometer,02		WHO 13-001S	151-007W	STUNE03WT
1200	040991			TDCT B	231-1	4730M	WHO 12-296S	151-001W	STUNE03WT
1520	040991			TDCT E	transmissometer,02		WHO 12-301S	151-006W	STUNE03WT
1832	040991			TDCT B	232-1	4845M	WHO 12-015S	151-033W	STUNE03WT
2151	040991			TDCT E	transmissometer,02		WHO 12-008S	151-009W	STUNE03WT
0200	050991			TDCT B	233-1	4925M	WHO 11-300S	150-598W	STUNE03WT
0525	050991			TDCT E	transmissometer,02		WHO 11-303S	150-596W	STUNE03WT
0836	050991			TDCT B	234-1	5000M	WHO 11-001S	151-001W	STUNE03WT
1200	050991			TDCT E	transmissometer,02		WHO 11-016S	151-003W	STUNE03WT
1119	060991			TDCT B	235-4	4855M	WHO 10-299S	151-000W	STUNE03WT
1435	060991			TDCT E	transmissometer,02		WHO 10-308S	150-590W	STUNE03WT
1758	060991			TDCT B	236-1	4600M	WHO 10-001S	150-597W	STUNE03WT
2104	060991			TDCT E	transmissometer,02		WHO 10-008S	150-590W	STUNE03WT
0056	070991			TDCT B	237-1	4852M	WHO 09-298S	150-598W	STUNE03WT
0420	070991			TDCT E	transmissometer,02		WHO 09-298S	150-597W	STUNE03WT
0724	070991			TDCT B	238-1	3780M	WHO 09-001S	151-001W	STUNE03WT
1009	070991			TDCT E	transmissometer,02		WHO 09-002S	150-596W	STUNE03WT
1310	070991			TDCT B	239-1	4050M	WHO 08-298S	151-001W	STUNE03WT
1613	070991			TDCT E	transmissometer,02		WHO 08-304S	150-597W	STUNE03WT

#GMT #TIME	DDMMYY DATE	LOC TIME	T Z	SAMP CODE	SAMPLE IDENTIFIER	DISP CODE	LAT.	LONG.	CRUISE LEG-SHIP
1920 2244	070991 070991			TDCT TDCT	B 240-1 E transmissometer,02	5040M WHO	07-598S 08-010S	151-001W 150-598W	sTUNE03WT sTUNE03WT
0232 0616	080991 080991			TDCT TDCT	B 241-1 E transmissometer,02	5196M WHO	07-300S 07-313S	151-000W 151-003W	sTUNE03WT sTUNE03WT
0936 1300	080991 080991			TDCT TDCT	B 242-1 E transmissometer,02	5210M WHO	07-001S 07-018S	151-001W 151-002W	sTUNE03WT sTUNE03WT
1617 1937	080991 080991			TDCT TDCT	B 243-1 E transmissometer,02	4920M WHO	06-298S 06-305S	150-598W 151-000W	sTUNE03WT sTUNE03WT
0539 0914	090991 090991			TDCT TDCT	B 244-3 E transmissometer,02	5117M WHO	06-012S 06-023S	151-002W 151-006W	sTUNE03WT sTUNE03WT
1641 1959	090991 090991			TDCT TDCT	B 245-1 E transmissometer,02	4980M WHO	05-298S 05-306S	150-598W 151-009W	sTUNE03WT sTUNE03WT
2350 0311	090991 100991			TDCT TDCT	B 246-2 E transmissometer,02	4820M WHO	05-004S 05-016S	151-004W 151-003W	sTUNE03WT sTUNE03WT
0638 0952	100991 100991			TDCT TDCT	B 247-1 E transmissometer,02	4682M WHO	04-301S 04-318S	151-001W 151-002W	sTUNE03WT sTUNE03WT
1308 1619	100991 100991			TDCT TDCT	B 248-1 E transmissometer,02	4690M WHO	03-597S 04-011S	151-000W 151-016W	sTUNE03WT sTUNE03WT
2025 2332	100991 100991			TDCT TDCT	B 249-2 E transmissometer,02	4675M WHO	03-294S 03-305S	151-005W 151-017W	sTUNE03WT sTUNE03WT
0234 0553	110991 110991			TDCT TDCT	B 250-1 E transmissometer,02	4765M WHO	03-001S 03-006S	151-000W 151-018W	sTUNE03WT sTUNE03WT
1300 1613	110991 110991			TDCT TDCT	B 252-1 E transmissometer,02	4796M WHO	02-401S 02-409S	151-000W 151-015W	sTUNE03WT sTUNE03WT
2235 0156	110991 120991			TDCT TDCT	B 254-2 E transmissometer,02	4895M WHO	02-198S 02-209S	151-003W 151-016W	sTUNE03WT sTUNE03WT
0817 1124	120991 120991			TDCT TDCT	B 256-1 E transmissometer,02	4682M WHO	02-001S 02-003S	150-594W 150-594W	sTUNE03WT sTUNE03WT
1650 2001	120991 120991			TDCT TDCT	B 258-1 E transmissometer,02	4820M WHO	01-399S 01-405S	151-001W 150-597W	sTUNE03WT sTUNE03WT

#GMT #TIME	DDMMYY DATE	LOC TIME	T Z	SAMP CODE	SAMPLE IDENTIFIER	DISP CODE	LAT.	LONG.	CRUISE LEG-SHIP
1847	130991			TDCT B	260-1		4780M	WHO 01-197S	150-596W sTUNE03WT
2200	130991			TDCT E	transmissometer,02	WHO	01-203S	150-598W	sTUNE03WT
0446	140991			TDCT B	262-1		4667M	WHO 01-000S	151-001W sTUNE03WT
0801	140991			TDCT E	transmissometer,02	WHO	01-009S	150-596W	sTUNE03WT
1316	140991			TDCT B	264-1		4415M	WHO 00-398S	151-001W sTUNE03WT
1619	140991			TDCT E	transmissometer,02	WHO	00-402S	150-590W	sTUNE03WT
2204	140991			TDCT B	266-2		4330M	WHO 00-199S	151-001W sTUNE03WT
0103	150991			TDCT E	transmissometer,02	WHO	00-211S	150-597W	sTUNE03WT
0630	150991			TDCT B	268-1		4270M	WHO 00-002N	151-000W sTUNE03WT
0943	150991			TDCT E	transmissometer,02	WHO	00-006S	150-597W	sTUNE03WT
1500	150991			TDCT B	270-1		4305M	WHO 00-201N	151-001W sTUNE03WT
1759	150991			TDCT E	transmissometer,02	WHO	00-193N	150-595W	sTUNE03WT
2330	150991			TDCT B	272-1		4130M	WHO 00-401N	151-000W sTUNE03WT
0222	160991			TDCT E	transmissometer,02	WHO	00-394N	151-001W	sTUNE03WT
0745	160991			TDCT B	274-1		3758M	WHO 01-000N	150-598W sTUNE03WT
1028	160991			TDCT E	transmissometer,02	WHO	00-587N	151-001W	sTUNE03WT
1558	160991			TDCT B	276-1		3155M	WHO 01-201N	151-001W sTUNE03WT
1824	160991			TDCT E	transmissometer,02	WHO	01-201N	151-002W	sTUNE03WT
0019	170991			TDCT B	278-1		4170M	WHO 01-400N	151-000W sTUNE03WT
0309	170991			TDCT E	transmissometer,02	WHO	01-387N	151-003W	sTUNE03WT
0852	170991			TDCT B	280-1		4330M	WHO 02-002N	150-598W sTUNE03WT
1157	170991			TDCT E	transmissometer,02	WHO	01-596N	151-004W	sTUNE03WT
1753	170991			TDCT B	282-1		4658M	WHO 02-201N	151-000W sTUNE03WT
2106	170991			TDCT E	transmissometer,02	WHO	02-194N	151-003W	sTUNE03WT
0404	180991			TDCT B	284-1		4545M	WHO 02-397N	151-001W sTUNE03WT
0710	180991			TDCT E	transmissometer,02	WHO	02-390N	151-011W	sTUNE03WT
1328	180991			TDCT B	286-1		5065M	WHO 02-598N	151-001W sTUNE03WT
1650	180991			TDCT E	transmissometer,02	WHO	02-585N	151-008W	sTUNE03WT
2053	180991			TDCT B	287-2		4788M	WHO 03-300N	151-002W sTUNE03WT
0008	190991			TDCT E	transmissometer,02	WHO	03-296N	151-005W	sTUNE03WT

#GMT #TIME	DDMMYY DATE	LOC TIME	T Z	SAMP CODE	SAMPLE IDENTIFIER	DISP CODE	LAT.	LONG.	CRUISE LEG-SHIP
0900	190991			TDCT B	288-2	5085M	WHO 04-007N	151-000W	STUNE03WT
1222	190991			TDCT E	transmissometer,02		WHO 04-001N	151-020W	STUNE03WT
1939	190991			TDCT B	289-1	5085M	WHO 04-300N	150-598W	STUNE03WT
2304	190991			TDCT E	transmissometer,02		WHO 04-298N	151-004W	STUNE03WT
0250	200991			TDCT B	290-1	4992M	WHO 05-001N	151-000W	STUNE03WT
0610	200991			TDCT E	transmissometer,02		WHO 04-595N	151-004W	STUNE03WT
0911	200991			TDCT B	291-1	5158M	WHO 05-293N	151-059W	STUNE03WT
1236	200991			TDCT E	transmissometer,02		WHO 05-287N	151-055W	STUNE03WT
1540	200991			TDCT B	292-1	5120M	WHO 05-591N	151-111W	STUNE03WT
1903	200991			TDCT E	transmissometer,02		WHO 05-598N	151-108W	STUNE03WT
2244	200991			TDCT B	293-1	5193M	WHO 06-280N	151-160W	STUNE03WT
0209	210991			TDCT E	transmissometer,02		WHO 06-276N	151-153W	STUNE03WT
0525	210991			TDCT B	294-1	5350M	WHO 06-579N	151-218W	STUNE03WT
0857	210991			TDCT E	transmissometer,02		WHO 06-583N	151-207W	STUNE03WT
1212	210991			TDCT B	295-1	5240M	WHO 07-270N	151-280W	STUNE03WT
1540	210991			TDCT E	transmissometer,02		WHO 07-278N	151-277W	STUNE03WT
1847	210991			TDCT B	296-1	5153M	WHO 07-573N	151-341W	STUNE03WT
2210	210991			TDCT E	transmissometer,02		WHO 07-591N	151-344W	STUNE03WT
0140	220991			TDCT B	297-1	5063M	WHO 08-260N	151-392W	STUNE03WT
0508	220991			TDCT E	transmissometer,02		WHO 08-260N	151-385W	STUNE03WT
0810	220991			TDCT B	298-1	5004M	WHO 08-563N	151-451W	STUNE03WT
1129	220991			TDCT E	transmissometer,02		WHO 08-569N	151-452W	STUNE03WT
1422	220991			TDCT B	299-1	5135M	WHO 09-251N	151-498W	STUNE03WT
1747	220991			TDCT E	transmissometer,02		WHO 09-254N	151-491W	STUNE03WT
0309	230991			TDCT B	300-3	5195M	WHO 09-558N	151-558W	STUNE03WT
0633	230991			TDCT E	transmissometer,02		WHO 09-554N	151-563W	STUNE03WT
1340	230991			TDCT B	301-1	4745M	WHO 10-241N	152-021W	STUNE03WT
1653	230991			TDCT E	transmissometer,02		WHO 10-241N	152-007W	STUNE03WT

#GMT #TIME	DDMMYY DATE	LOC TIME	T Z	SAMP CODE	SAMPLE IDENTIFIER	DISP CODE	LAT.	LONG.	CRUISE LEG-SHIP
1959	230991			TDCT B	302-1	5264M	WHO 10-543N	152-071W	sTUNE03WT
2326	230991			TDCT E	transmissometer,02		WHO 10-546N	152-067W	sTUNE03WT
0518	240991			TDCT B	303-1	5279M	WHO 11-230N	152-128W	sTUNE03WT
0844	240991			TDCT E	transmissometer,02		WHO 11-228N	152-126W	sTUNE03WT
1206	240991			TDCT B	304-1	5110M	WHO 11-531N	152-188W	sTUNE03WT
1526	240991			TDCT E	transmissometer,02		WHO 11-527N	152-196W	sTUNE03WT
1833	240991			TDCT B	305-1	5470M	WHO 12-222N	152-237W	sTUNE03WT
2232	240991			TDCT E	transmissometer,02		WHO 12-208N	152-248W	sTUNE03WT
0227	250991			TDCT B	306-1	5479M	WHO 12-521N	152-302W	sTUNE03WT
0608	250991			TDCT E	transmissometer,02		WHO 12-517N	152-303W	sTUNE03WT
0916	250991			TDCT B	307-1	5537M	WHO 13-212N	152-358W	sTUNE03WT
1313	250991			TDCT E	transmissometer,02		WHO 13-205N	152-349W	sTUNE03WT
2338	250991			TDCT B	308-3	5960M	WHO 13-508N	152-409W	sTUNE03WT
0340	260991			TDCT E	transmissometer,02		WHO 13-506N	152-403W	sTUNE03WT
1230	260991			TDCT B	309-1	5910M	WHO 14-202N	152-469W	sTUNE03WT
1619	260991			TDCT E	transmissometer,02		WHO 14-192N	152-468W	sTUNE03WT
1933	260991			TDCT B	310-1	5717M	WHO 14-501N	152-530W	sTUNE03WT
2316	260991			TDCT E	transmissometer,02		WHO 14-495N	152-536W	sTUNE03WT
0305	270991			TDCT B	311-1	5604M	WHO 15-193N	152-590W	sTUNE03WT
0644	270991			TDCT E	transmissometer,02		WHO 15-197N	152-594W	sTUNE03WT
0953	270991			TDCT B	312-1	5360M	WHO 15-491N	153-038W	sTUNE03WT
1318	270991			TDCT E	transmissometer,02		WHO 15-494N	153-038W	sTUNE03WT
1625	270991			TDCT B	313-1	4905M	WHO 16-182N	153-099W	sTUNE03WT
1940	270991			TDCT E	transmissometer,02		WHO 16-179N	153-099W	sTUNE03WT
2335	270991			TDCT B	314-1	5114M	WHO 16-483N	153-162W	sTUNE03WT
0301	280991			TDCT E	transmissometer,02		WHO 16-478N	153-161W	sTUNE03WT

#GMT #TIME	DDMMYY DATE	LOC TIME	T Z	SAMP CODE	SAMPLE IDENTIFIER	DISP CODE	LAT.	LONG.	CRUISE LEG-SHIP
0603 0927	280991 280991			TDCT B TDCT E	315-1 transmissometer,02	5007M WHO	17-171N 17-169N	153-220W 153-216W	sTUNE03WT sTUNE03WT
1200 1521	280991 280991			TDCT B TDCT E	316-1 transmissometer,02	4930M WHO	17-392N 17-381N	153-258W 153-258W	sTUNE03WT sTUNE03WT
2343 0256	280991 290991			TDCT B TDCT E	317-3 transmissometer,02	4880M WHO	18-000N 18-004N	153-300W 153-299W	sTUNE03WT sTUNE03WT
1032 1350	290991 290991			TDCT B TDCT E	318-1 transmissometer,02	5152M WHO	18-123N 18-125N	153-589W 153-589W	sTUNE03WT sTUNE03WT
1656 2014	290991 290991			TDCT B TDCT E	319-1 transmissometer,02	5109M WHO	18-242N 18-238N	154-280W 154-290W	sTUNE03WT sTUNE03WT
2318 0250	290991 300991			TDCT B TDCT E	320-1 transmissometer,02	5335M WHO	18-370N 18-359N	154-571W 154-572W	TUNE03WT TUNE03WT
0552 0846	300991 300991			TDCT B TDCT E	321-1 transmissometer,02	4265M WHO	18-494N 18-488N	155-250W 155-260W	TUNE03WT TUNE03WT
1011 1225	300991 300991			TDCT B TDCT E	322-1 transmissometer,02	3170M WHO	18-518N 18-508N	155-337W 155-344W	TUNE03WT TUNE03WT
1330 1523	300991 300991			TDCT B TDCT E	323-1 transmissometer,02	2535M WHO	18-511N 18-504N	155-353W 155-368W	TUNE03WT TUNE03WT
1614 1744	300991 300991			TDCT B TDCT E	324-1 transmissometer,02	1800M WHO	18-522N 18-523N	155-364W 155-367W	TUNE03WT TUNE03WT
1831 1922	300991 300991			TDCT B TDCT E	325-1 transmissometer,02	920M WHO	18-527N 18-527N	155-383W 155-383W	TUNE03WT TUNE03WT
1956 2020	300991 300991			TDCT B TDCT E	326-1 transmissometer,02	280M WHO	18-528N 18-529N	155-394W 155-395W	TUNE03WT TUNE03WT

#GMT #TIME	DDMMYY DATE	LOC TIME	T Z	SAMP CODE	SAMPLE IDENTIFIER	DISP CODE	LAT.	LONG.	CRUISE LEG-SHIP	
*** HYDROCASTS ***										
0817	010991			HCNI B	221-1	36-bl	3579M	WHO 17-303S	150-296W	sTUNE03WT
1058	010991			HCNI E	SON	P Cfc		WHO 17-305S	150-279W	sTUNE03WT
1413	010991			HCNI B	222-1	36-btl	3735M	WHO 17-003S	150-299W	sTUNE03WT
1717	010991			HCNI E	SON	P Cfc H3	Re	WHO 16-585S	150-297W	sTUNE03WT
2031	010991			HCNI B	223-1	36-btl	4023M	WHO 16-300S	150-297W	sTUNE03WT
2313	010991			HCNI E	SON	P Cfc		WHO 16-299S	150-307W	sTUNE03WT
0219	020991			HCNI B	224-1	36-btl	3380M	WHO 15-597S	150-299W	sTUNE03WT
0502	020991			HCNI E	SON	P Cfc		WHO 15-593S	150-305W	sTUNE03WT
1331	020991			HCNI B	225-2	36-btl	4260M	WHO 15-315S	150-393W	sTUNE03WT
1629	020991			HCNI E	SON	P Cfc	He	WHO 15-314S	150-394W	sTUNE03WT
0422	030991			HCNI B	226-1	36-btl	4460M	WHO 15-000S	150-501W	sTUNE03WT
0725	030991			HCNI E	SON C	P Cfc H3	He	WHO 15-003S	150-502W	sTUNE03WT
1051	030991			HCNI B	227-1	36-btl	4375M	WHO 14-297S	151-000W	sTUNE03WT
1359	030991			HCNI E	SON	P Cfc H3		WHO 14-307S	151-002W	sTUNE03WT
1712	030991			HCNI B	228-1	36-btl	4260M	WHO 14-001S	151-001W	sTUNE03WT
2012	030991			HCNI E	SON	P Cfc	He	WHO 14-006S	151-002W	sTUNE03WT
2329	030991			HCNI B	229-1	36-btl	4625M	WHO 13-298S	151-001W	sTUNE03WT
0239	040991			HCNI E	SON	P	He	WHO 13-307S	151-016W	sTUNE03WT
0548	040991			HCNI B	230-1	36-btl	4529M	WHO 12-597S	151-001W	sTUNE03WT
0852	040991			HCNI E	SON C	P Cfc H3	He	WHO 13-001S	151-007W	sTUNE03WT
1200	040991			HCNI B	231-1	36-btl	4730M	WHO 12-296S	151-001W	sTUNE03WT
1520	040991			HCNI E	SON	P	He	WHO 12-301S	151-006W	sTUNE03WT
1832	040991			HCNI B	232-1	36-btl	4845M	WHO 12-015S	151-033W	sTUNE03WT
2151	040991			HCNI E	SON	P Cfc		WHO 12-008S	151-009W	sTUNE03WT

#GMT #TIME	DDMMYY DATE	LOC TIME	T Z	SAMP CODE	SAMPLE IDENTIFIER	DISP CODE	LAT.	LONG.	CRUISE LEG-SHIP
0200 0525	050991 050991			HCNI B HCNI E	233-1 36-btl 4925M SON P Cfc He	WHO WHO	11-300S 11-303S	150-598W 150-596W	sTUNE03WT sTUNE03WT
0836 1200	050991 050991			HCNI B HCNI E	234-1 36-btl 5000M SON P Cfc H3 He	WHO WHO	11-001S 11-016S	151-001W 151-003W	sTUNE03WT sTUNE03WT
1119 1435	060991 060991			HCNI B HCNI E	235-4 36-btl 4855M SON C P Cfc H3 He	WHO WHO	10-299S 10-308S	151-000W 150-590W	sTUNE03WT sTUNE03WT
1758 2104	060991 060991			HCNI B HCNI E	236-1 36-btl 4600M SON P Cfc	WHO WHO	10-001S 10-008S	150-597W 150-590W	sTUNE03WT sTUNE03WT
0056 0420	070991 070991			HCNI B HCNI E	237-1 36-btl 4852M SON C P Cfc He	WHO WHO	09-298S 09-298S	150-598W 150-597W	sTUNE03WT sTUNE03WT
0724 1009	070991 070991			HCNI B HCNI E	238-1 36-btl 3780M SON C P Cfc H3 He	WHO WHO	09-001S 09-002S	151-001W 150-596W	sTUNE03WT sTUNE03WT
1310 1613	070991 070991			HCNI B HCNI E	239-1 36-btl 4050M SON P He	WHO WHO	08-298S 08-304S	151-001W 150-597W	sTUNE03WT sTUNE03WT
1920 2244	070991 070991			HCNI B HCNI E	240-1 36-btl 5040M SON P Cfc	WHO WHO	07-598S 08-010S	151-001W 150-598W	sTUNE03WT sTUNE03WT
0232 0616	080991 080991			HCNI B HCNI E	241-1 36-btl 5196M SON P	WHO WHO	07-300S 07-313S	151-000W 151-003W	sTUNE03WT sTUNE03WT
0936 1300	080991 080991			HCNI B HCNI E	242-1 36-btl 5210M SON C P Cfc H3 He	WHO WHO	07-001S 07-018S	151-001W 151-002W	sTUNE03WT sTUNE03WT
1617 1937	080991 080991			HCNI B HCNI E	243-1 36-btl 4920M SON P	WHO WHO	06-298S 06-305S	150-598W 151-000W	sTUNE03WT sTUNE03WT
0539 0914	090991 090991			HCNI B HCNI E	244-3 36-btl 5117M SON P Cfc	WHO WHO	06-012S 06-023S	151-002W 151-006W	sTUNE03WT sTUNE03WT
1641 1959	090991 090991			HCNI B HCNI E	245-1 36-btl 4980M SON P	WHO WHO	05-298S 05-306S	150-598W 151-009W	sTUNE03WT sTUNE03WT
2350 0311	090991 100991			HCNI B HCNI E	246-2 36-btl 4820M SON C P Cfc H3 He	WHO WHO	05-004S 05-016S	151-004W 151-003W	sTUNE03WT sTUNE03WT

#GMT #TIME	DDMMYY DATE	LOC TIME	T Z	SAMP CODE	SAMPLE IDENTIFIER	DISP CODE	LAT.	LONG.	CRUISE LEG-SHIP
0638	100991			HCNI B	247-1 36-btl 4682M	WHO	04-301S	151-001W	sTUNE03WT
0952	100991			HCNI E	SON P He	WHO	04-318S	151-002W	sTUNE03WT
1308	100991			HCNI B	248-1 36-btl 4690M	WHO	03-597S	151-000W	sTUNE03WT
1619	100991			HCNI E	SON P Cfc H3 He	WHO	04-011S	151-016W	sTUNE03WT
2025	100991			HCNI B	249-2 36-btl 4675M	WHO	03-294S	151-005W	sTUNE03WT
2332	100991			HCNI E	SON P	WHO	03-305S	151-017W	sTUNE03WT
0234	110991			HCNI B	250-1 36-btl 4765M	WHO	03-001S	151-000W	sTUNE03WT
0553	110991			HCNI E	SON C P Cfc H3 He	WHO	03-006S	151-018W	sTUNE03WT
1300	110991			HCNI B	252-1 36-btl 4796M	WHO	02-401S	151-000W	sTUNE03WT
1613	110991			HCNI E	SON P Cfc	WHO	02-409S	151-015W	sTUNE03WT
2235	110991			HCNI B	254-2 36-btl 4895M	WHO	02-198S	151-003W	sTUNE03WT
0156	120991			HCNI E	SON P Cfc	WHO	02-209S	151-016W	sTUNE03WT
0817	120991			HCNI B	256-1 36-btl 4682M	WHO	02-001S	150-594W	sTUNE03WT
1124	120991			HCNI E	SON C P Cfc H3 He	WHO	02-003S	150-594W	sTUNE03WT
1650	120991			HCNI B	258-1 36-btl 4820M	WHO	01-399S	151-001W	sTUNE03WT
2001	120991			HCNI E	SON P Cfc H3 He	WHO	01-405S	150-597W	sTUNE03WT
1847	130991			HCNI B	260-1 36-btl 4780M	WHO	01-197S	150-596W	sTUNE03WT
2200	130991			HCNI E	SON P Cfc	WHO	01-203S	150-598W	sTUNE03WT
0446	140991			HCNI B	262-1 36-btl 4667M	WHO	01-000S	151-001W	sTUNE03WT
0801	140991			HCNI E	SON C P Cfc H3 He	WHO	01-009S	150-596W	sTUNE03WT
1316	140991			HCNI B	264-1 36-btl 4415M	WHO	00-398S	151-001W	sTUNE03WT
1619	140991			HCNI E	SON P Cfc	WHO	00-402S	150-590W	sTUNE03WT
2204	140991			HCNI B	266-2 36-btl 4330M	WHO	00-199S	151-001W	sTUNE03WT
0103	150991			HCNI E	SON P Cfc	WHO	00-211S	150-597W	sTUNE03WT

#GMT #TIME	DDMMYY DATE	LOC TIME	T Z	SAMP CODE	SAMPLE IDENTIFIER	DISP CODE	LAT.	LONG.	CRUISE LEG-SHIP
0630	150991			HCNI B	268-1 36-bt1 4270M	WHO	00-002N	151-000W	sTUNE03WT
0943	150991			HCNI E	SON C P Cfc H3 He	WHO	00-006S	150-597W	sTUNE03WT
1500	150991			HCNI B	270-1 36-bt1 4305M	WHO	00-201N	151-001W	sTUNE03WT
1759	150991			HCNI E	SON P Cfc	WHO	00-193N	150-595W	sTUNE03WT
2330	150991			HCNI B	272-1 36-bt1 4130M	WHO	00-401N	151-000W	sTUNE03WT
0222	160991			HCNI E	SON P Cfc	WHO	00-394N	151-001W	sTUNE03WT
0745	160991			HCNI B	274-1 36-bt1 3758M	WHO	01-000N	150-598W	sTUNE03WT
1028	160991			HCNI E	SON C P Cfc H3 He	WHO	00-587N	151-001W	sTUNE03WT
1558	160991			HCNI B	276-1 36-bt1 3155M	WHO	01-201N	151-001W	sTUNE03WT
1824	160991			HCNI E	SON P Cfc	WHO	01-201N	151-002W	sTUNE03WT
0019	170991			HCNI B	278-1 36-bt1 4170M	WHO	01-400N	151-000W	sTUNE03WT
0309	170991			HCNI E	SON P Cfc	WHO	01-387N	151-003W	sTUNE03WT
0852	170991			HCNI B	280-1 36-bt1 4330M	WHO	02-002N	150-598W	sTUNE03WT
1157	170991			HCNI E	SON C P Cfc H3 He	WHO	01-596N	151-004W	sTUNE03WT
1753	170991			HCNI B	282-1 36-bt1 4658M	WHO	02-201N	151-000W	sTUNE03WT
2106	170991			HCNI E	SON P	WHO	02-194N	151-003W	sTUNE03WT
0404	180991			HCNI B	284-1 36-bt1 4545M	WHO	02-397N	151-001W	sTUNE03WT
0710	180991			HCNI E	SON P Cfc	WHO	02-390N	151-011W	sTUNE03WT
1328	180991			HCNI B	286-1 36-bt1 5065M	WHO	02-598N	151-001W	sTUNE03WT
1650	180991			HCNI E	SON C P Cfc H3 He	WHO	02-585N	151-008W	sTUNE03WT
2053	180991			HCNI B	287-2 36-bt1 4788M	WHO	03-300N	151-002W	sTUNE03WT
0008	190991			HCNI E	SON P He	WHO	03-296N	151-005W	sTUNE03WT
0900	190991			HCNI B	288-2 36-bt1 5085M	WHO	04-007N	151-000W	sTUNE03WT
1222	190991			HCNI E	SON P Cfc H3 He	WHO	04-001N	151-020W	sTUNE03WT
1939	190991			HCNI B	289-1 36-bt1 5085M	WHO	04-300N	150-598W	sTUNE03WT
2304	190991			HCNI E	SON P Cfc	WHO	04-298N	151-004W	sTUNE03WT

#GMT #TIME	DDMMYY DATE	LOC TIME	T Z	SAMP CODE	SAMPLE IDENTIFIER	DISP CODE	LAT.	LONG.	CRUISE LEG-SHIP	
0250 0610	200991 200991			HCNI B HCNI E	290-1 SON C P	36-bt1 Cfc H3 He	4992M	WHO 05-001N WHO 04-595N	151-000W 151-004W	sTUNE03WT sTUNE03WT
0911 1236	200991 200991			HCNI B HCNI E	291-1 SON P	36-bt1 He	5158M	WHO 05-293N WHO 05-287N	151-059W 151-055W	sTUNE03WT sTUNE03WT
1540 1903	200991 200991			HCNI B HCNI E	292-1 SON P	36-bt1 Cfc	5120M	WHO 05-591N WHO 05-598N	151-111W 151-108W	sTUNE03WT sTUNE03WT
2244 0209	200991 210991			HCNI B HCNI E	293-1 SON P	36-bt1	5193M	WHO 06-280N WHO 06-276N	151-160W 151-153W	sTUNE03WT sTUNE03WT
0525 0857	210991 210991			HCNI B HCNI E	294-1 SON P	36-bt1	5350M	WHO 06-579N WHO 06-583N	151-218W 151-207W	sTUNE03WT sTUNE03WT
1212 1540	210991 210991			HCNI B HCNI E	295-1 SON P	36-bt1	5240M	WHO 07-270N WHO 07-278N	151-280W 151-277W	sTUNE03WT sTUNE03WT
1847 2210	210991 210991			HCNI B HCNI E	296-1 SON P	36-bt1	5153M	WHO 07-573N WHO 07-591N	151-341W 151-344W	sTUNE03WT sTUNE03WT
0140 0508	220991 220991			HCNI B HCNI E	297-1 SON P	36-bt1	5063M	WHO 08-260N WHO 08-260N	151-392W 151-385W	sTUNE03WT sTUNE03WT
0810 1129	220991 220991			HCNI B HCNI E	298-1 SON P	36-bt1	5004M	WHO 08-563N WHO 08-569N	151-451W 151-452W	sTUNE03WT sTUNE03WT
1422 1747	220991 220991			HCNI B HCNI E	299-1 SON P	36-bt1	5135M	WHO 09-251N WHO 09-254N	151-498W 151-491W	sTUNE03WT sTUNE03WT
0309 0633	230991 230991			HCNI B HCNI E	300-3 SON P	36-bt1	5195M	WHO 09-558N WHO 09-554N	151-558W 151-563W	sTUNE03WT sTUNE03WT
1340 1653	230991 230991			HCNI B HCNI E	301-1 SON P	36-bt1 He	4745M	WHO 10-241N WHO 10-241N	152-021W 152-007W	sTUNE03WT sTUNE03WT

#GMT #TIME	DDMMYY DATE	LOC TIME	T Z	SAMP CODE	SAMPLE IDENTIFIER	DISP CODE	LAT.	LONG.	CRUISE LEG-SHIP
1959	230991			HCNI B	302-1 36-btl 5264M	WHO	10-543N	152-071W	sTUNE03WT
2326	230991			HCNI E	SON C P Cfc H3 He	WHO	10-546N	152-067W	sTUNE03WT
0518	240991			HCNI B	303-1 36-btl 5279M	WHO	11-230N	152-128W	sTUNE03WT
0844	240991			HCNI E	SON P	WHO	11-228N	152-126W	sTUNE03WT
1206	240991			HCNI B	304-1 36-btl 5110M	WHO	11-531N	152-188W	sTUNE03WT
1526	240991			HCNI E	SON P Cfc	WHO	11-527N	152-196W	sTUNE03WT
1833	240991			HCNI B	305-1 36-btl 5470M	WHO	12-222N	152-237W	sTUNE03WT
2232	240991			HCNI E	SON C P Cfc	WHO	12-208N	152-248W	sTUNE03WT
0227	250991			HCNI B	306-1 36-btl 5479M	WHO	12-521N	152-302W	sTUNE03WT
0608	250991			HCNI E	SON C P Cfc H3 He	WHO	12-517N	152-303W	sTUNE03WT
0916	250991			HCNI B	307-1 36-btl 5537M	WHO	13-212N	152-358W	sTUNE03WT
1313	250991			HCNI E	SON P	WHO	13-205N	152-349W	sTUNE03WT
2338	250991			HCNI B	308-3 36-btl 5960M	WHO	13-508N	152-409W	sTUNE03WT
0340	260991			HCNI E	SON P Cfc	WHO	13-506N	152-403W	sTUNE03WT
1230	260991			HCNI B	309-1 36-btl 5910M	WHO	14-202N	152-469W	sTUNE03WT
1619	260991			HCNI E	SON P Cfc	WHO	14-192N	152-468W	sTUNE03WT
1933	260991			HCNI B	310-1 36-btl 5717M	WHO	14-501N	152-530W	sTUNE03WT
2316	260991			HCNI E	SON C P Cfc H3 He	WHO	14-495N	152-536W	sTUNE03WT
0305	270991			HCNI B	311-1 36-btl 5604M	WHO	15-193N	152-590W	sTUNE03WT
0644	270991			HCNI E	SON P	WHO	15-197N	152-594W	sTUNE03WT
0953	270991			HCNI B	312-1 36-btl 5360M	WHO	15-491N	153-038W	sTUNE03WT
1318	270991			HCNI E	SON P Cfc He	WHO	15-494N	153-038W	sTUNE03WT
1625	270991			HCNI B	313-1 36-btl 4905M	WHO	16-182N	153-099W	sTUNE03WT
1940	270991			HCNI E	SON P Cfc	WHO	16-179N	153-099W	sTUNE03WT
2335	270991			HCNI B	314-1 36-btl 5114M	WHO	16-483N	153-162W	sTUNE03WT
0301	280991			HCNI E	SON C P Cfc H3 He	WHO	16-478N	153-161W	sTUNE03WT

#GMT #TIME	DDMMYY DATE	LOC TIME	T Z	SAMP CODE	SAMPLE IDENTIFIER	DISP CODE	LAT.	LONG.	CRUISE LEG-SHIP
0603	280991			HCNI B	315-1	36-btl	5007M	WHO 17-171N 153-220W	sTUNE03WT
0927	280991			HCNI E	SON	P	He	WHO 17-169N 153-216W	sTUNE03WT
1200	280991			HCNI B	316-1	36-btl	4930M	WHO 17-392N 153-258W	sTUNE03WT
1521	280991			HCNI E	SON	P	Cfc	WHO 17-381N 153-258W	sTUNE03WT
2343	280991			HCNI B	317-3	36-btl	4880M	WHO 18-000N 153-300W	sTUNE03WT
0256	290991			HCNI E	SON	P	Cfc	WHO 18-004N 153-299W	sTUNE03WT
1032	290991			HCNI B	318-1	36-btl	5152M	WHO 18-123N 153-589W	sTUNE03WT
1350	290991			HCNI E	SON	P	Cfc	WHO 18-125N 153-589W	sTUNE03WT
1656	290991			HCNI B	319-1	36-btl	5109M	WHO 18-242N 154-280W	sTUNE03WT
2014	290991			HCNI E	SON C	P	Cfc H3	WHO 18-238N 154-290W	sTUNE03WT
2318	290991			HCNI B	320-1	36-btl	5335M	WHO 18-370N 154-571W	TUNE03WT
0250	300991			HCNI E	SON	P	Cfc	WHO 18-359N 154-572W	TUNE03WT
0552	300991			HCNI B	321-1	36-btl	4265M	WHO 18-494N 155-250W	TUNE03WT
0846	300991			HCNI E	SON	P		WHO 18-488N 155-260W	TUNE03WT
1011	300991			HCNI B	322-1	28-btl	3170M	WHO 18-518N 155-337W	TUNE03WT
1225	300991			HCNI E	SON	P		WHO 18-508N 155-344W	TUNE03WT
1330	300991			HCNI B	323-1	24-btl	2535M	WHO 18-511N 155-353W	TUNE03WT
1523	300991			HCNI E	SON	P		WHO 18-504N 155-368W	TUNE03WT
1614	300991			HCNI B	324-1	20-btl	1800M	WHO 18-522N 155-364W	TUNE03WT
1744	300991			HCNI E	SON	P		WHO 18-523N 155-367W	TUNE03WT
1831	300991			HCNI B	325-1	15-btl	920M	WHO 18-527N 155-383W	TUNE03WT
1922	300991			HCNI E	SON	P		WHO 18-527N 155-383W	TUNE03WT
1956	300991			HCNI B	326-1	7-btl	280M	WHO 18-528N 155-394W	TUNE03WT
2020	300991			HCNI E	SON	P		WHO 18-529N 155-395W	TUNE03WT

#GMT #TIME	DDMMYY DATE	LOC TIME	T Z	SAMP CODE	SAMPLE IDENTIFIER	DISP CODE	LAT.	LONG.	CRUISE LEG-SHIP
#*** CURRENT MEASUREMENTS ***									
0514	020991			CMRT c	ALACE 82 Sat tracked	POR	15-590S	150-306W	STUNE03WT
1527	040991			CMRT c	ALACE 45 Sat tracked	POR	12-299S	151-007W	STUNE03WT
2323	070991			CMRT c	ALACE 34 Sat Tracked	POR	08-003S	151-001W	STUNE03WT
0956	100991			CMRT c	ALACE 65 Sat Tracked	POR	04-318S	151-002W	STUNE03WT
0653	120991			CMRT c	ALACE 64 Sat Tracked	POR	02-102S	151-011W	STUNE03WT
0948	150991			CMRT c	ALACE 63 Sat Tracked	POR	00-006S	150-598W	STUNE03WT
1618	170991			CMRT c	ALACE 80 Sat Tracked	POR	02-084N	151-003W	STUNE03WT
2349	190991			CMRT c	ALACE 61 Sat Tracked	POR	04-300N	151-004W	STUNE03WT
2258	210991			CMRT c	ALACE 69 Sat Tracked	POR	07-599N	151-340W	STUNE03WT
0851	240991			CMRT c	ALACE 66 Sat Tracked	POR	11-229N	152-126W	STUNE03WT
0002	270991			CMRT c	ALACE 83 Sat Tracked	POR	14-499N	152-523W	STUNE03WT
0935	280991			CMRT c	ALACE 85 Sat Tracked	POR	17-169N	153-217W	STUNE03WT
0739	030991			CMDR c	Drogue Drift. 15490	POR	15-001S	150-499W	STUNE03WT
2146	060991			CMDR c	Drogue Drift. 15115	POR	10-006S	150-591W	STUNE03WT
0311	100991			CMDR c	Drogue Drift. 15106	POR	05-016S	151-003W	STUNE03WT
0159	120991			CMDR c	Drogue Drift. 15015	POR	02-209S	151-016W	STUNE03WT
0950	150991			CMDR c	Drogue Drift. 15100	POR	00-006S	150-598W	STUNE03WT
1159	170991			CMDR c	Drogue Drift. 15107	POR	01-596N	151-004W	STUNE03WT
2345	190991			CMDR c	Drogue Drift. 15027	POR	04-298n	151-004W	STUNE03WT
0820	110991			CM** B	251-1 ADCP-CTD 4685M	UHI	02-500S	150-597W	STUNE03WT
1113	110991			CM** E	to depth vel profile	UHI	02-512S	151-005W	STUNE03WT
1738	110991			CM** B	253-1 ADCP-CTD 4750M	UHI	02-299S	151-001W	STUNE03WT
2031	110991			CM** E	to depth vel profile	UHI	02-304S	151-010W	STUNE03WT
0326	120991			CM** B	255-1 ADCP-CTD 4818M	UHI	02-099S	150-598W	STUNE03WT
0649	120991			CM** E	to depth vel profile	UHI	02-102S	151-010W	STUNE03WT
1243	120991			CM** B	257-1 ADCP-CTD 4769M	UHI	01-501S	151-001W	STUNE03WT
1534	120991			CM** E	to depth vel profile	UHI	01-500S	150-595W	STUNE03WT
1141	130991			CM** B	259-4 ADCP-CTD 4810M	UHI	01-310S	150-596W	STUNE03WT
1431	130991			CM** E	to depth vel profile	UHI	01-317S	150-595W	STUNE03WT
0009	140991			CM** B	261-1 ADCP-CTD 4832M	UHI	01-098S	150-598W	STUNE03WT
0302	140991			CM** E	to depth vel profile	UHI	01-107S	151-003W	STUNE03WT

#GMT #TIME	DDMMYY DATE	LOC TIME	T Z	SAMP CODE	SAMPLE IDENTIFIER	DISP CODE	LAT.	LONG.	CRUISE LEG-SHIP
0924	140991			CM** B	263-1 ADCP-CTD 4260M	UHI	00-497S	150-598W	sTUNE03WT
1201	140991			CM** E	to depth vel profile	UHI	00-502S	150-592W	sTUNE03WT
1732	140991			CM** B	265-1 ADCP-CTD 4274M	UHI	00-299S	150-597W	sTUNE03WT
2003	140991			CM** E	to depth vel profile	UHI	00-299S	150-592W	sTUNE03WT
0233	150991			CM** B	267-1 ADCP-CTD 4045M	UHI	00-100S	151-003W	sTUNE03WT
0503	150991			CM** E	to depth vel profile	UHI	00-108S	151-001W	sTUNE03WT
1114	150991			CM** B	269-1 ADCP-CTD 3750M	UHI	00-098N	150-598W	sTUNE03WT
1330	150991			CM** E	to depth vel profile	UHI	00-085N	150-596W	sTUNE03WT
1935	150991			CM** B	271-1 ADCP-CTD 3255M	UHI	00-302N	151-001W	sTUNE03WT
2138	150991			CM** E	to depth vel profile	UHI	00-306N	151-001W	sTUNE03WT
0343	160991			CM** B	273-1 ADCP-CTD 4165M	UHI	00-500N	151-001W	sTUNE03WT
0620	160991			CM** E	to depth vel profile	UHI	00-494N	151-002W	sTUNE03WT
1200	160991			CM** B	275-1 ADCP-CTD 4240M	UHI	01-098N	151-000W	sTUNE03WT
1432	160991			CM** E	to depth vel profile	UHI	01-092N	151-004W	sTUNE03WT
1945	160991			CM** B	277-1 ADCP-CTD 4060M	UHI	01-301N	151-001W	sTUNE03WT
2215	160991			CM** E	to depth vel profile	UHI	01-294N	151-000W	sTUNE03WT
1945	160991			CM** B	277-1 ADCP-CTD 4060M	UHI	01-301N	151-001W	sTUNE03WT
2215	160991			CM** E	to depth vel profile	UHI	01-294N	151-000W	sTUNE03WT
0450	170991			CM** B	279-1 ADCP-CTD 4088M	UHI	01-499N	151-001W	sTUNE03WT
0724	170991			CM** E	to depth vel profile	UHI	01-496N	151-008W	sTUNE03WT
1330	170991			CM** B	281-1 ADCP-CTD 4500M	UHI	02-099N	151-000W	sTUNE03WT
1615	170991			CM** E	to depth vel profile	UHI	02-083N	151-002W	sTUNE03WT
2329	170991			CM** B	283-1 ADCP-CTD 4680M	UHI	02-299N	151-000W	sTUNE03WT
0217	180991			CM** E	to depth vel profile	UHI	02-286N	151-001W	sTUNE03WT
0853	180991			CM** B	285-1 ADCP-CTD 4790M	UHI	02-504N	151-001W	sTUNE03WT
1148	180991			CM** E	to depth vel profile	UHI	02-492N	151-004W	sTUNE03WT

#GMT #TIME	DDMMYY DATE	LOC TIME	T Z	SAMP CODE	SAMPLE IDENTIFIER	DISP CODE	LAT.	LONG.	CRUISE LEG-SHIP
#*** HYDROCASTS ***									
0820	110991			HCNI B	251-1 ADCP-CTD 4685M	WHO	02-500S	150-597W	sTUNE03WT
1113	110991			HCNI E	SO 11-bt1	WHO	02-512S	151-005W	sTUNE03WT
1738	110991			HCNI B	253-1 ADCP-CTD 4750M	WHO	02-299S	151-001W	sTUNE03WT
2031	110991			HCNI E	SO 11-bt1	WHO	02-304S	151-010W	sTUNE03WT
0326	120991			HCNI B	255-1 ADCP-CTD 4818M	WHO	02-099S	150-598W	sTUNE03WT
0649	120991			HCNI E	SO 11-bt1	WHO	02-102S	151-010W	sTUNE03WT
1243	120991			HCNI B	257-1 ADCP-CTD 4769M	WHO	01-501S	151-001W	sTUNE03WT
1534	120991			HCNI E	SO 11-bt1	WHO	01-500S	150-595W	sTUNE03WT
1141	130991			HCNI B	259-4 ADCP-CTD 4810M	WHO	01-310S	150-596W	sTUNE03WT
1431	130991			HCNI E	SO 11-bt1	WHO	01-317S	150-595W	sTUNE03WT
0009	140991			HCNI B	261-1 ADCP-CTD 4832M	WHO	01-098S	150-598W	sTUNE03WT
0302	140991			HCNI E	SO 11-bt1	WHO	01-107S	151-003W	sTUNE03WT
0924	140991			HCNI B	263-1 ADCP-CTD 4260M	WHO	00-497S	150-598W	sTUNE03WT
1201	140991			HCNI E	SO 11-bt1	WHO	00-502S	150-592W	sTUNE03WT
1732	140991			HCNI B	265-1 ADCP-CTD 4274M	WHO	00-299S	150-597W	sTUNE03WT
2003	140991			HCNI E	SO 11-bt1	WHO	00-299S	150-592W	sTUNE03WT
0233	150991			HCNI B	267-1 ADCP-CTD 4045M	WHO	00-100S	151-003W	sTUNE03WT
0503	150991			HCNI E	SO 11-bt1	WHO	00-108S	151-001W	sTUNE03WT
1114	150991			HCNI B	269-1 ADCP-CTD 3750M	WHO	00-098N	150-598W	sTUNE03WT
1330	150991			HCNI E	SO 11-bt1	WHO	00-085N	150-596W	sTUNE03WT
1935	150991			HCNI B	271-1 ADCP-CTD 3255M	WHO	00-302N	151-001W	sTUNE03WT
2138	150991			HCNI E	SO 11-bt1	WHO	00-306N	151-001W	sTUNE03WT

#GMT #TIME	DDMMYY DATE	LOC TIME	T Z	SAMP CODE	SAMPLE IDENTIFIER	DISP CODE	LAT.	LONG.	CRUISE LEG-SHIP
0343	160991			HCNI B	273-1 ADCP-CTD 4165M	WHO	00-500N	151-001W	sTUNE03WT
0620	160991			HCNI E	SO 11-bt1	WHO	00-494N	151-002W	sTUNE03WT
1200	160991			HCNI B	275-1 ADCP-CTD 4240M	WHO	01-098N	151-000W	sTUNE03WT
1432	160991			HCNI E	SO 11-bt1	WHO	01-092N	151-004W	sTUNE03WT
1945	160991			HCNI B	277-1 ADCP-CTD 4060M	WHO	01-301N	151-001W	sTUNE03WT
2215	160991			HCNI E	SO 11-bt1	WHO	01-294N	151-000W	sTUNE03WT
1945	160991			HCNI B	277-1 ADCP-CTD 4060M	WHO	01-301N	151-001W	sTUNE03WT
2215	160991			HCNI E	SO 11-bt1	WHO	01-294N	151-000W	sTUNE03WT
0450	170991			HCNI B	279-1 ADCP-CTD 4088M	WHO	01-499N	151-001W	sTUNE03WT
0724	170991			HCNI E	SO 11-bt1	WHO	01-496N	151-008W	sTUNE03WT
1330	170991			HCNI B	281-1 ADCP-CTD 4500M	WHO	02-099N	151-000W	sTUNE03WT
1615	170991			HCNI E	SO 11-bt1	WHO	02-083N	151-002W	sTUNE03WT
2329	170991			HCNI B	283-1 ADCP-CTD 4680M	WHO	02-299N	151-000W	sTUNE03WT
0217	180991			HCNI E	SO 11-bt1	WHO	02-286N	151-001W	sTUNE03WT
0853	180991			HCNI B	285-1 ADCP-CTD 4790M	WHO	02-504N	151-001W	sTUNE03WT
1148	180991			HCNI E	SO 11-bt1	WHO	02-492N	151-004W	sTUNE03WT
**** SUBMERGED, PHOTOMETER ****									
2201	040991			PS** B	232-2Bio-optical200m	LDO	12-008S	151-010W	sTUNE03WT
2242	040991			PS** E	profiler,G,T,Cond,N	LDO	12-007S	151-016W	sTUNE03WT
2250	050991			PS** B	235-2Bio-optical200m	LDO	10-309S	150-575W	sTUNE03WT
0020	060991			PS** E	profiler,G,T,Cond,N	LDO	10-321S	150-577W	sTUNE03WT
2108	060991			PS** B	236-2Bio-optical200m	LDO	10-008S	150-590W	sTUNE03WT
2139	060991			PS** E	profiler,G,T,Cond,N	LDO	10-007S	150-590W	sTUNE03WT
2247	070991			PS** B	240-2Bio-optical200m	LDO	08-010S	150-597W	sTUNE03WT
2318	070991			PS** E	profiler,G,T,Cond,N	LDO	08-004S	151-001W	sTUNE03WT
2248	080991			PS** B	244-1Bio-optical200m	LDO	06-001S	151-000W	sTUNE03WT
2319	080991			PS** E	profiler,G,T,Cond,N	LDO	06-002S	151-003W	sTUNE03WT

#GMT #TIME	DDMMYY DATE	LOC TIME	T Z	SAMP CODE	SAMPLE IDENTIFIER	DISP CODE	LAT.	LONG.	CRUISE LEG-SHIP
2308	090991			PS** B	246-1Bio-optical200m	LDO	05-001S	151-001W	STUNE03WT
2342	090991			PS** E	profiler,G,T,Cond,N	LDO	05-003S	151-004W	STUNE03WT
1942	100991			PS** B	249-1Bio-optical200m	LDO	03-298S	151-001W	STUNE03WT
2021	100991			PS** E	profiler,G,T,Cond,N	LDQ	03-295S	151-005W	STUNE03WT
2155	110991			PS** B	254-1Bio-optical200m	LDO	02-196S	150-595W	STUNE03WT
2227	110991			PS** E	profiler,G,T,Cond,N	LDO	02-199S	151-002W	STUNE03WT
2127	120991			PS** B	259-1Bio-optical200m	LDO	01-297S	151-000W	STUNE03WT
????	120991			PS** E	profiler,G,T,Cond,N	LDO	01-298S	151-002W	STUNE03WT
2210	130991			PS** B	260-2Bio-optical200m	LDO	01-203S	150-597W	STUNE03WT
2249	130991			PS** E	profiler,G,T,Cond,N	LDO	01-203S	150-595W	STUNE03WT
2120	140991			PS** B	266-1Bio-optical200m	LDO	00-198S	151-002W	STUNE03WT
2158	140991			PS** E	profiler,G,T,Cond,N	LDO	00-199S	151-000W	STUNE03WT
2144	150991			PS** B	271-2Bio-optical200m	LDO	00-306N	151-001W	STUNE03WT
2213	150991			PS** E	profiler,G,T,Cond,N	LDO	00-306N	150-596W	STUNE03WT
2218	160991			PS** B	277-2Bio-optical200m	LDO	01-294N	151-000W	STUNE03WT
2252	160991			PS** E	profiler,G,T,Cond,N	LDO	01-294N	151-002W	STUNE03WT
2111	170991			PS** B	282-2Bio-optical200m	LDO	02-193N	151-004W	STUNE03WT
2149	170991			PS** E	profiler,G,T,Cond,N	LDO	02-190N	151-007W	STUNE03WT
2014	180991			PS** B	287-1Bio-optical200m	LDO	03-303N	150-599W	STUNE03WT
2044	180991			PS** E	profiler,G,T,Cond,N	LDO	03-301N	151-000W	STUNE03WT
2307	190991			PS** B	289-2Bio-optical200m	LDO	04-298N	151-004W	STUNE03WT
2340	190991			PS** E	profiler,G,T,Cond,N	LDO	04-297N	151-005W	STUNE03WT
2200	200991			PS** B	293-1Bio-optical200M	LDO	06-280N	151-161W	STUNE03WT
2236	200991			PS** E	profiler,G,T,Cond,N	LDO	06-280N	151-161W	STUNE03WT

#GMT #TIME	DDMMYY DATE	LOC TIME	T Z	SAMP CODE	SAMPLE IDENTIFIER	DISP CODE	LAT.	LONG.	CRUISE LEG-SHIP
2213	210991			PS** B	296-2Bio-optical200m	LDO	07-592N	151-343W	sTUNE03WT
2245	210991			PS** E	profiler,G,T,Cond,N	LDO	07-595N	151-339W	sTUNE03WT
2053	220991			PS** B	300-1Bio-optical200M	LDO	09-549N	151-564W	sTUNE03WT
2129	220991			PS** E	profiler,G,T,Cond,N	LDO	09-551N	151-566W	sTUNE03WT
2329	230991			PS** B	302-2Bio-optical200M	LDO	10-546N	152-067W	sTUNE03WT
0005	240991			PS** E	profiler,G,T,Cond,N	LDO	10-545N	152-065W	sTUNE03WT
2235	240991			PS** B	305-2Bio-optical200M	LDO	12-208N	152-249W	sTUNE03WT
2309	240991			PS** E	profiler,G,T,Cond,N	LDO	12-209N	152-251W	sTUNE03WT
2241	250991			PS** B	308-2Bio-optical200M	LDO	13-525N	152-394W	sTUNE03WT
2314	250991			PS** E	profiler,G,T,Cond,N	LDO	13-525N	152-394W	sTUNE03WT
2318	260991			PS** B	310-2Bio-optical200M	LDO	14-495N	152-536W	sTUNE03WT
2353	260991			PS** E	profiler,G,T,Cond,N	LDO	14-496N	152-541W	sTUNE03WT
2256	270991			PS** B	314-1Bio-optical200M	LDO	16-481N	153-159W	sTUNE03WT
2327	270991			PS** E	profiler,G,T,Cond,N	LDO	16-482N	153-162W	sTUNE03WT
2240	280991			PS** B	317-2Bio-optical200M	LDO	18-020N	153-470W	sTUNE03WT
2313	280991			PS** E	profiler,G,T,Cond,N	LDO	18-017N	153-285W	sTUNE03WT
*** HYDROCASTS ***									
2201	040991			HCNI B	232-2optic 1-bt1200M	LDO	12-008S	151-010W	sTUNE03WT
2242	040991			HCNI E	GH A	LDO	12-007S	151-016W	sTUNE03WT
2250	050991			HCNI B	235-2optic 1-bt1200M	LDO	10-309S	150-575W	sTUNE03WT
0020	060991			HCNI E	GH A	LDO	10-321S	150-577W	sTUNE03WT
2108	060991			HCNI B	236-2optic 1-bt1200M	LDO	10-008S	150-590W	sTUNE03WT
2139	060991			HCNI E	GH A	LDO	10-007S	150-590W	sTUNE03WT
2247	070991			HCNI B	240-2optic 1-bt1200M	LDO	08-010S	150-597W	sTUNE03WT
2318	070991			HCNI E	GH A	LDO	08-004S	151-001W	sTUNE03WT

#GMT #TIME	DDMMYY DATE	LOC TIME	T Z	SAMP CODE	SAMPLE IDENTIFIER	DISP CODE	LAT.	LONG.	CRUISE LEG-SHIP
2248	080991			HCNI B	244-loptic 1-bt1200M	LDO	06-001S	151-000W	sTUNE03WT
2319	080991			HCNI E	GH A	LDO	06-002S	151-003W	sTUNE03WT
2308	090991			HCNI B	246-loptic 1-bt1200M	LDO	05-001S	151-001W	sTUNE03WT
2342	090991			HCNI E	GH A	LDO	05-003S	151-004W	sTUNE03WT
1942	100991			HCNI B	249-loptic 1-bt1200M	LDO	03-298S	151-001W	sTUNE03WT
2021	100991			HCNI E	GH A	LDO	03-295S	151-005W	sTUNE03WT
2155	110991			HCNI B	254-loptic 1-bt1200M	LDO	02-196S	150-595W	sTUNE03WT
2227	110991			HCNI E	GH A	LDO	02-199S	151-002W	sTUNE03WT
2127	120991			HCNI B	259-loptic 1-bt1200M	LDO	01-297S	151-000W	sTUNE03WT
2201	120991			HCNI E	GH A	LDO	01-298S	151-002W	sTUNE03WT
2210	130991			HCNI B	260-2optic 1-bt1200M	LDO	01-203S	150-597W	sTUNE03WT
2249	130991			HCNI E	GH A	LDO	01-203S	150-595W	sTUNE03WT
2120	140991			HCNI B	266-loptic 1-bt1200M	LDO	00-198S	151-002W	sTUNE03WT
2158	140991			HCNI E	GH A	LDO	00-199S	151-000W	sTUNE03WT
2144	150991			HCNI B	271-2optic 1-bt1200M	LDO	00-306N	151-001W	sTUNE03WT
2213	150991			HCNI E	GH A	LDO	00-306N	150-596W	sTUNE03WT
2218	160991			HCNI B	277-2optic 1-bt1200M	LDO	01-294N	151-000W	sTUNE03WT
2252	160991			HCNI E	GH A	LDO	01-294N	151-002W	sTUNE03WT
2111	170991			HCNI B	282-2optic 1-bt1200M	LDO	02-193N	151-004W	sTUNE03WT
2149	170991			HCNI E	GH A	LDO	02-190N	151-007W	sTUNE03WT
2014	180991			HCNI B	287-loptic 1-bt1200M	LDO	03-303N	150-599W	sTUNE03WT
2044	180991			HCNI E	GH A	LDO	03-301N	151-000W	sTUNE03WT
2307	190991			HCNI B	289-2optic 1-bt1200M	LDO	04-298N	151-004W	sTUNE03WT
2340	190991			HCNI E	GH A	LDO	04-297N	151-005W	sTUNE03WT
2236	200991			HCNI B	293-loptic 1-bt1200M	LDO	06-280N	151-161W	sTUNE03WT
2236	200991			HCNI E	GH A	LDO	06-280N	151-161W	sTUNE03WT

#GMT #TIME	DDMMYY DATE	LOC TIME	T Z	SAMP CODE	SAMPLE IDENTIFIER	DISP CODE	LAT.	LONG.	CRUISE LEG-SHIP
2213	210991			HCNI B	296-2optic 1-btl200M	LDO	07-592N	151-343W	STUNE03WT
2245	210991			HCNI E	GH A	LDO	07-595N	151-339W	STUNE03WT
2053	220991			HCNI B	300-1optic 1-btl200M	LDO	09-549N	151-564W	STUNE03WT
2129	220991			HCNI E	GH A	LDO	09-551N	151-566W	STUNE03WT
2329	230991			HCNI B	302-2optic 1-btl200M	LDO	10-546N	152-067W	STUNE03WT
0005	240991			HCNI E	GH A	LDO	10-545N	152-065W	STUNE03WT
2235	240991			HCNI B	305-2optic 1-btl200M	LDO	12-208N	152-249W	STUNE03WT
2309	240991			HCNI E	GH A	LDO	12-209N	152-251W	STUNE03WT
2241	250991			HCNI B	308-2optic 1-btl200M	LDO	13-525N	152-394W	STUNE03WT
2314	250991			HCNI E	GH A	LDO	13-525N	152-394W	STUNE03WT
2318	260991			HCNI B	310-2optic 1-btl200M	LDO	14-495N	152-536W	STUNE03WT
2353	260991			HCNI E	GH A	LDO	14-496N	152-541W	STUNE03WT
2256	270991			HCNI B	314-1optic 1-btl200M	LDO	16-481N	153-159W	STUNE03WT
2327	270991			HCNI E	GH A	LDO	16-482N	153-162W	STUNE03WT
2240	280991			HCNI B	317-2optic 1-btl200M	LDO	18-020N	153-470W	STUNE03WT
2313	280991			HCNI E	GH A	LDO	18-017N	153-285W	STUNE03WT
*** GEOCHEMICAL SAMPLE - GERARD BARRELS ***									
0837	020991			GCGB B	225-1 5-btl 4260M	UWA	15-300S	150-401W	STUNE03WT
1300	020991			GCGB E	S N C14	UMI	15-312S	150-394W	STUNE03WT
1649	020991			GCGB B	225-3 5-btl 3010M	UWA	15-312S	150-395W	STUNE03WT
2300	020991			GCGB E	S N C14	UMI	15-314S	150-417W	STUNE03WT
2329	020991			GCGB B	225-4 4-btl 2000M	UWA	15-317S	150-421W	STUNE03WT
0104	030991			GCGB E	S N C14	UMI	15-316S	150-423W	STUNE03WT
1619	050991			GCGB B	235-1 9-btl 5050M	UWA	10-304S	150-594W	STUNE03WT
2230	050991			GCGB E	S N C14	UMI	10-308S	150-576W	STUNE03WT

#GMT #TIME	DDMMYY DATE	LOC TIME	T Z	SAMP CODE	SAMPLE IDENTIFIER	DISP CODE	LAT.	LONG.	CRUISE LEG-SHIP
0400 1020	060991 060991			GCGB B GCGB E	235-3 S N C14	9-btl 3010M UMI	10-308S 10-306S	150-597W 150-571W	sTUNE03WT sTUNE03WT
2342 0521	080991 090991			GCGB B GCGB E	244-2 S N C14	9-btl 5160M UMI	06-003S 06-014S	151-004W 151-002W	sTUNE03WT sTUNE03WT
0943 1333	090991 090991			GCGB B GCGB E	244-4 S N C14	9-btl 2914M UMI	05-598S 05-585S	151--01W 150-578W	sTUNE03WT sTUNE03WT
2233 0334	120991 130991			GCGB B GCGB E	259-2 S N C14	9-btl 4879M UMI	01-300S 01-310S	151-006W 150-594W	sTUNE03WT sTUNE03WT
0522 1016	130991 130991			GCGB B GCGB E	259-3 S N C14	9-btl 2614M UMI	01-297S 01-316S	151-000W 150-580W	sTUNE03WT sTUNE03WT
0344 0847	190991 190991			GCGB B GCGB E	288-1 S N C14	9-btl 5090M UMI	04-001N 04-006N	151-001W 151-001W	sTUNE03WT sTUNE03WT
1253 1624	190991 190991			GCGB B GCGB E	288-3 S N C14	9-btl 2764M UMI	03-597N 03-589N	151--01W 151-017W	sTUNE03WT sTUNE03WT
2138 0247	220991 230991			GCGB B GCGB E	300-2 S N C14	9-btl 5320M UMI	09-552N 09-572N	151-567W 151-554W	sTUNE03WT sTUNE03WT
0658 1030	230991 230991			GCGB B GCGB E	300-4 S N C14	9-btl 3030M UMI	09-552N 09-544N	151-563W 151-564W	sTUNE03WT sTUNE03WT
2138 0247	220991 230991			GCGB B GCGB E	300-2 S N C14	9-btl 5320M UMI	09-552N 09-572N	151-567W 151-554W	sTUNE03WT sTUNE03WT
0658 1030	230991 230991			GCGB B GCGB E	300-4 S N C14	9-btl 3030M UMI	09-552N 09-544N	151-563W 151-564W	sTUNE03WT sTUNE03WT
1642 2234	250991 250991			GCGB B GCGB E	308-1 S N C14	9-btl 6115M UMI	13-510N 13-525N	152-410W 152-394W	sTUNE03WT sTUNE03WT

#GMT #TIME	DDMMYY DATE	LOC TIME	T Z	SAMP CODE	SAMPLE IDENTIFIER	DISP CODE	LAT.	LONG.	CRUISE LEG-SHIP
0354 0800	260991 260991			GCGB B GCGB E	308-4 S N C14	9-btl 3430M UMI	13-507N 13-508N	152-402W 152-385W	sTUNE03WT sTUNE03WT
1755 2227	280991 280991			GCGB B GCGB E	317-1 S N C14	9-btl 5000M UMI	18-002N 18-029N	153-298W 153-307W	sTUNE03WT sTUNE03WT
0309 0710	290991 290991			GCGB B GCGB E	317-4 S N C14	9-btl 3480M UMI	18-005N 18-012N	153-298W 153-290W	sTUNE03WT sTUNE03WT

*** EXPENDABLE BATHY THERMOGRAMS ***

1757	060991			BTXP	ctd.236	GDC	10-000S	151-000W	TUNE03WT
1919	070991			BTXP	ctd.240	GDC	08-000S	151-000W	TUNE03WT
1616	080991			BTXP	ctd.243	GDC	06-300S	151-000W	TUNE03WT
2347	090991			BTXP	ctd.246	GDC	05-000S	151-000W	TUNE03WT
0234	110991			BTXP	ctd.250	GDC	03-000S	151-000W	TUNE03WT
2235	110991			BTXP	ctd.254	GDC	02-199S	151-000W	TUNE03WT
1650	120991			BTXP	ctd.258	GDC	01-400S	151-000W	TUNE03WT
0008	140991			BTXP	ctd.261	GDC	01-100S	151-000W	TUNE03WT
0234	150991			BTXP	ctd.267	GDC	00-100S	151-000W	TUNE03WT
0342	160991			BTXP	ctd.273	GDC	00-500N	151-000W	TUNE03WT
0448	170991			BTXP	ctd.279	GDC	01-500N	151-000W	TUNE03WT
0403	180991			BTXP	ctd.284	GDC	02-400N	151-000W	TUNE03WT
2050	180991			BTXP	ctd.287	GDC	03-300N	151-000W	TUNE03WT
1937	190991			BTXP	ctd.289	GDC	04-300N	151-000W	TUNE03WT
2243	200991			BTXP	ctd.293	GDC	06-280N	151-161W	TUNE03WT
0139	220991			BTXP	ctd.297	GDC	08-260N	151-392W	TUNE03WT
0308	230991			BTXP	ctd.300	GDC	09-558N	151-558W	TUNE03WT
2008	230991			BTXP	ctd.302	GDC	10-543N	152-071W	TUNE03WT
0225	240991			BTXP	ctd.306	GDC	12-521N	152-301W	TUNE03WT
2340	250991			BTXP	ctd.308	GDC	13-508N	152-407W	TUNE03WT
0305	270991			BTXP	ctd.311	GDC	15-192N	152-591W	TUNE03WT
2335	270991			BTXP	ctd.314	GDC	16-482N	153-162W	TUNE03WT
2346	280991			BTXP	ctd.317	GDC	18-000N	153-300W	TUNE03WT
2318	290991			BTXP	ctd.320	GDC	18-371N	154-571W	TUNE03WT

End Sample Index

TUNE03WT