

INFORMAL REPORT AND INDEX OF
NAVIGATION, DEPTH, MAGNETIC AND SUBBOTTOM PROFILER DATA

(Issued May 1980)

QUEBRADA EXPEDITION

LEG 2

Acapulco, Mexico (4 December 1969)
to
San Diego, California (20 December 1969)

R/V T. Washington

Chief Scientist - R. L. Fisher (SIO)

Resident Marine Tech - J. L. Coatsworth

Post-Cruise Processing and Report Preparation
by S.I.O. Geological Data Center

NOTE: This is an index of edited underway geophysical data that is intended primarily for informal use within the institution. This document is not to be reproduced or distributed outside Scripps without prior approval of the chief scientist or the Geological Data Center, Scripps Institution of Oceanography, La Jolla, California 92093.

Informal Report and Index of Navigation, Depth, Magnetic and Subbottom Profiler Data

Contents:

- Index Chart - gives track of cruise leg and boundaries of depth compilation plots (see below).
- Track Charts - annotated with dates (day/month) and hour ticks. The scale is .3"/deg. long.
- Profiles - Depth and magnetic anomaly vs. distance. Dates (day/month) and positions of major course changes (greater than 30 degrees) are annotated. Sections of track having subbottom profiler (airgun) records have a solid black line along the bottom of the profile.

For information on the availability and reproduction costs of data in the following forms, contact S. M. Smith, Curator, Geological Data Center, Scripps Institution of Oceanography, La Jolla, California 92093. Phone: (714) 452-2752.

1. Navigation listing of times and positions of course and speed changes, fixes and drift velocity.
2. Depth compilation plots - in fathoms (assumed sound velocity of 800 fm./sec.) at approximately 1 mile spacing, plotted at 4"/degree with standard U. S. Navy Oceanographic Office BC series boundaries (see index chart).
3. Plots of magnetic anomaly profiles along track - map scale = 1.2"/degree; anomaly scale between 15°N and 15°S latitude = 500 gamma/inch; anomaly scale north of 15°N and south of 15°S = 1000 gamma/inch; from values retrieved at approximately 1 mile spacing and regional field removed using the 1975 IGRF.
4. Card decks of navigation, depth and magnetics (for specific formats, contact S. M. Smith, Geological Data Center).
5. S. I. O. Sample Index - list of beginning and end times and positions of all underway records as well as all other samples (geology, biology, physical oceanography, etc.) collected on the cruise leg. *
6. Microfilm or Xerox copies of:
 - a. Echosounder records - 12 and 3.5 kHz frequency
 - b. Subbottom profiler records (airgun)
 - c. Magnetometer records
 - d. Underway Data Log

* Only underway geophysical records are included in the Sample Index for this leg.

GMT D /M /Y TIME DATE	LOC LOC TIME TZ	CODE SAMP	SAMPLE IDENT.	CODE DISP	LAT.	LONG.	LEG-SHIP CRUISE
--------------------------	--------------------	--------------	---------------	--------------	------	-------	--------------------

QUEBRADA SAMPLE INDEX

QUEB02WT

*** PORTS ***

2238 04/12/69		LGPT B	ACAPULCO, MEXICO		16 51. N	99 56. W	F QUEB02WT
1656 20/12/69		LGPT E	SAN DIEGO, CAL		32 43. N	117 11. W	F QUEB02WT

PERSONNEL

*** NAME ***	*** TITLE ***	*** AFFILIATION ***
--------------	---------------	---------------------

1 FISHER, R. L.	CHIEF SCIENTIST	SCRIPPS INSTITUTION OF OCEANOGRAPHY, LA JOLLA CAL. 92093
2 COATSWORTH, J. L.	RESIDENT TECH	SCRIPPS INSTITUTION OF OCEANOGRAPHY, LA JOLLA CAL. 92093
3 MANN, R. T.		SCRIPPS INSTITUTION OF OCEANOGRAPHY, LA JOLLA CAL. 92093
4 ROWE, R. A.		SCRIPPS INSTITUTION OF OCEANOGRAPHY, LA JOLLA CAL. 92093
5 MOORE, J. M.	COMPUTER TECH	SCRIPPS INSTITUTION OF OCEANOGRAPHY, LA JOLLA CAL. 92093
6 BUTLER, C. M.		SCRIPPS INSTITUTION OF OCEANOGRAPHY, LA JOLLA CAL. 92093

NOTES

AN 'X' IN THE (B)EGIN/(E)ND COLUMN FOLLOWING THE SAMPLE CODE INDICATES NO SAMPLE OR DATA RECOVERED .
 A 'C' INDICATES CONTINUATION OF DATA COLLECTION FROM BEFORE THE BEGINNING OR AFTER THE END OF THIS LEG. (MOORED BOTTOM INSTRUMENTS, FOR EXAMPLE).
 THE NUMBER APPEARING IN THE COLUMNS BETWEEN THE SAMPLE IDENTIFIER AND THE DISPOSITION CODE, FOR MANY SAMPLE ENTRIES, IS THE WATER DEPTH IN CORRECTED METERS.

NUMBER OF SAMPLES OF CLASS 'TYPE' GOING TO DESTINATION 'DISP'

DISP	TYPE						TOTAL
	DP	LB	MG	PE	SP		
RLF	1	3	2	2		1	8
SIO	1			6		1	6
TOTAL	1	3	2	2	6	1	14

SAMPLE 'TYPE' CODES USED ABOVE

- DP = DEPTH
- LB = LOG BOOKS
- MG = MAGNETICS (TOWED VEHICLE, SURFACE, TOTAL FIELD)
- PE = PERSONNEL IN SCIENTIFIC PARTY
- SP = SEISMIC REFLECTION PROFILE AIRGUN

SAMPLE 'DISP' CODES USED ABOVE

- RLF = ROBERT L. FISHER (EXT. 3597) SIO
- SIO = SCRIPPS INSTITUTION OF OCEANOGRAPHY, LA JOLLA, CAL. 92093

GMT TIME	D /M /Y DATE	LOC TIME	LOC TZ	CODE SAMP	SAMPLE IDENT.	CODE DISP	LAT.	LONG.	LEG-SHIP CRUISE
-------------	-----------------	-------------	-----------	--------------	---------------	--------------	------	-------	--------------------

UNDERWAY DATA CURATOR - STUART M. SMITH (EXT.2/52)

*** LOG BOOKS ***

2001	4/12/69			LBWU B	UNDERWAY LOG BOOK 1	RLF 16	28.0N	99 57.0W	S QUEB02WT
1500	17/12/69			LBWU E	UNDERWAY LOG BOOK 1	RLF 17	45.0N	109 32.0W	S QUEB02WT
1500	17/12/69			LBWU B	UNDERWAY LOG BOOK 2	RLF 17	45.0N	109 32.0W	S QUEB02WT
1900	20/12/69			LBWU E	UNDERWAY LOG BOOK 2	RLF 28	44.7N	116 09.2W	S QUEB02WT

*** FATHOGRAMS ***

2011	4/12/69			DPRT B	PDR 12KHZ R-05	RLF 16	28.0N	99 57.0W	S QUEB02WT
2330	11/12/69			DPRT E	PDR 12KHZ R-05	RLF 09	55.6N	104 29.0W	S QUEB02WT
2342	11/12/69			DPRT B	PDR 12KHZ R-06	RLF 09	55.6N	104 29.3W	S QUEB02WT
2006	18/12/69			DPRT E	PDR 12KHZ R-06	RLF 22	00.6N	112 50.0W	S QUEB02WT
2042	18/12/69			DPRT B	PDR 12KHZ R-07	RLF 22	06.8N	112 52.7W	S QUEB02WT
1900	20/12/69			DPRT E	PDR 12KHZ R-07	RLF 28	44.7N	116 09.2W	S QUEB02WT

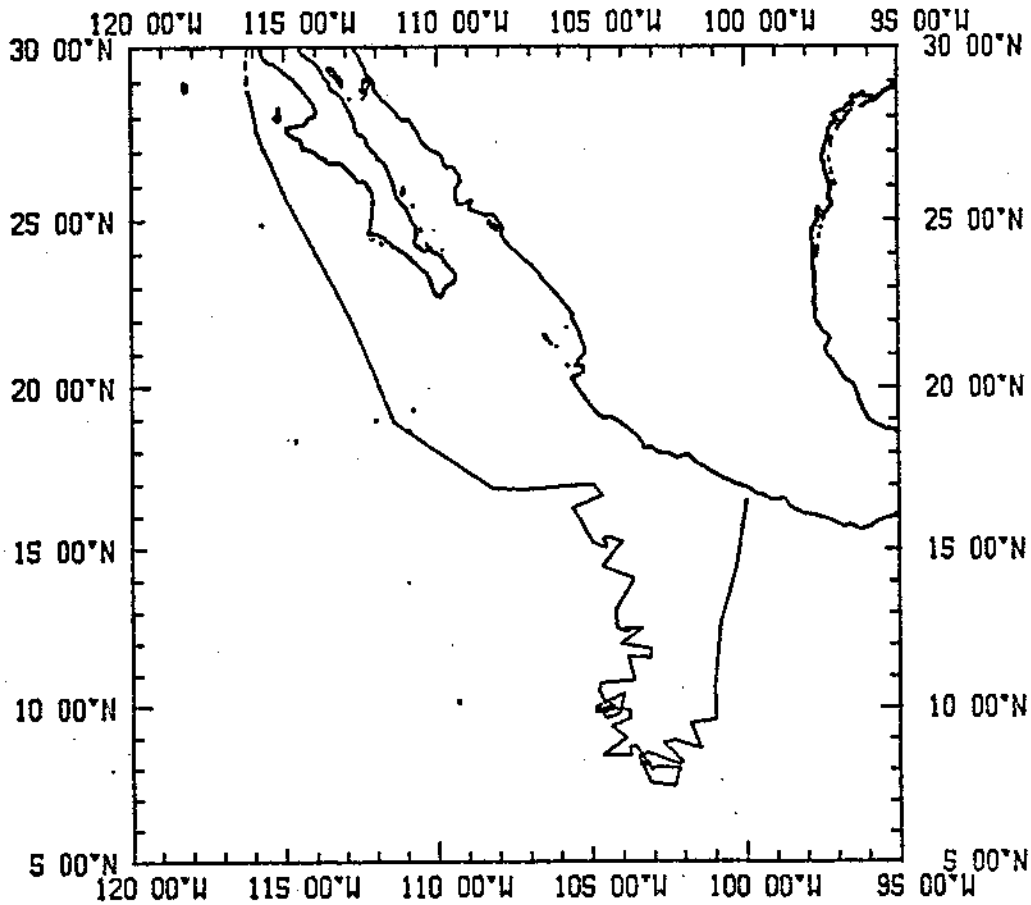
*** SEISMIC REFLECTION PROFILES ***

2215	4/12/69			SPRS B	AIRGUN(10) R-01	RLF 16	28.0N	99 57.0W	S QUEB02WT
1356	20/12/69			SPRS E	AIRGUN(10) R-01	RLF 28	17.6N	116 02.7W	S QUEB02WT

*** MAGNETOMETER ***

1612	9/12/69			MGRA B	MAGNETICS R-01	RLF 08	08.7N	103 09.2W	S QUEB02WT
0125	14/12/69			MGRA E	MAGNETICS R-01	RLF 12	26.1N	103 49.8W	S QUEB02WT
0745	14/12/69			MGRA B	MAGNETICS R-02	RLF 12	25.2N	103 56.5W	S QUEB02WT
1020	20/12/69			MGRA E	MAGNETICS R-02	RLF 27	56.3N	115 58.0W	S QUEB02WT
9900					END SAMPLE INDEX				QUEB02WT

QUEBO2WT



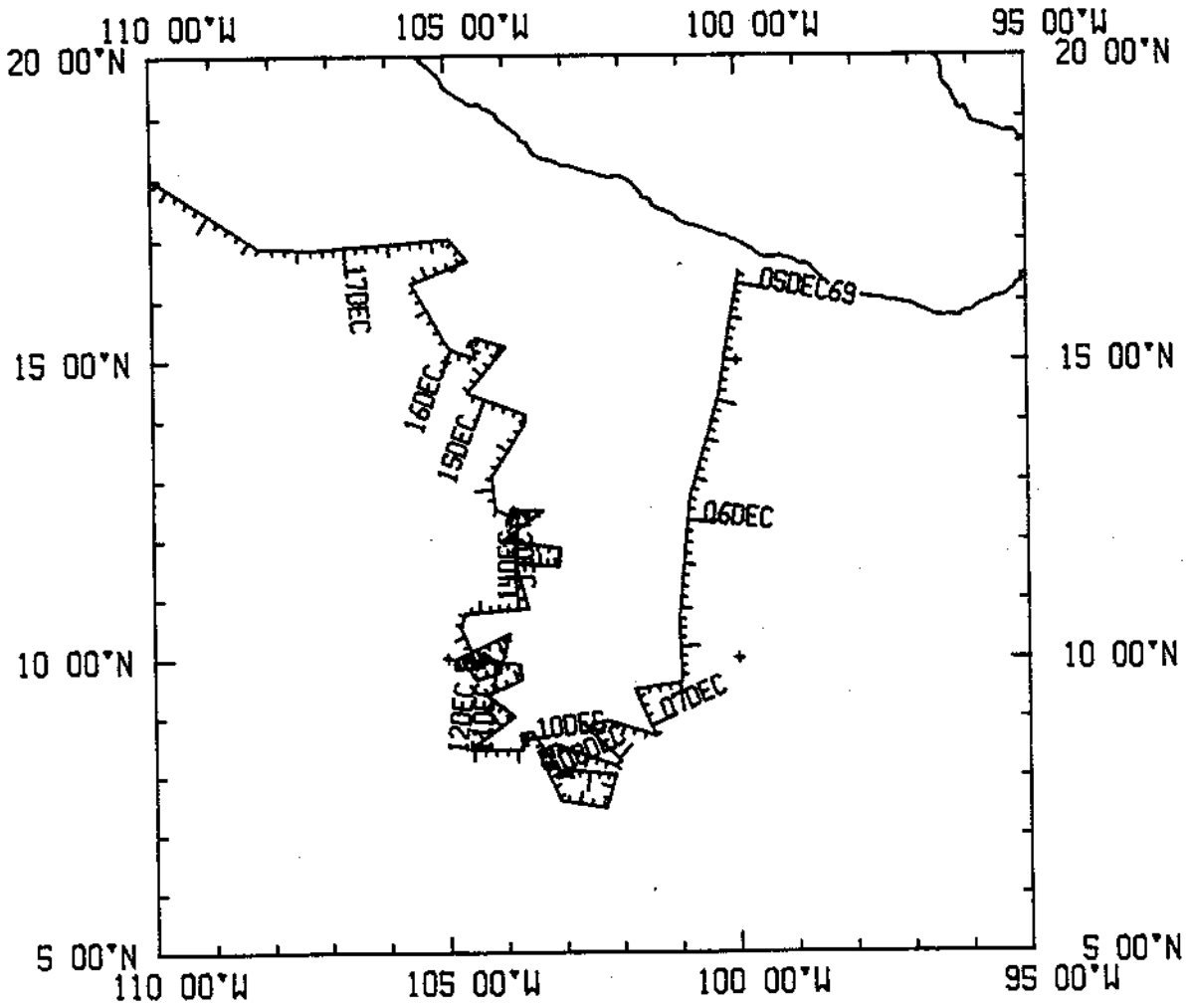
QUEBRADA EXPEDITION
LEG 02

Chief Scientist: R. L. Fisher (SIO)
Ports: Acapulco, Mexico to San Diego, Calif.
Dates: 4 - 20 December 1969
Ship: R/V T. Washington

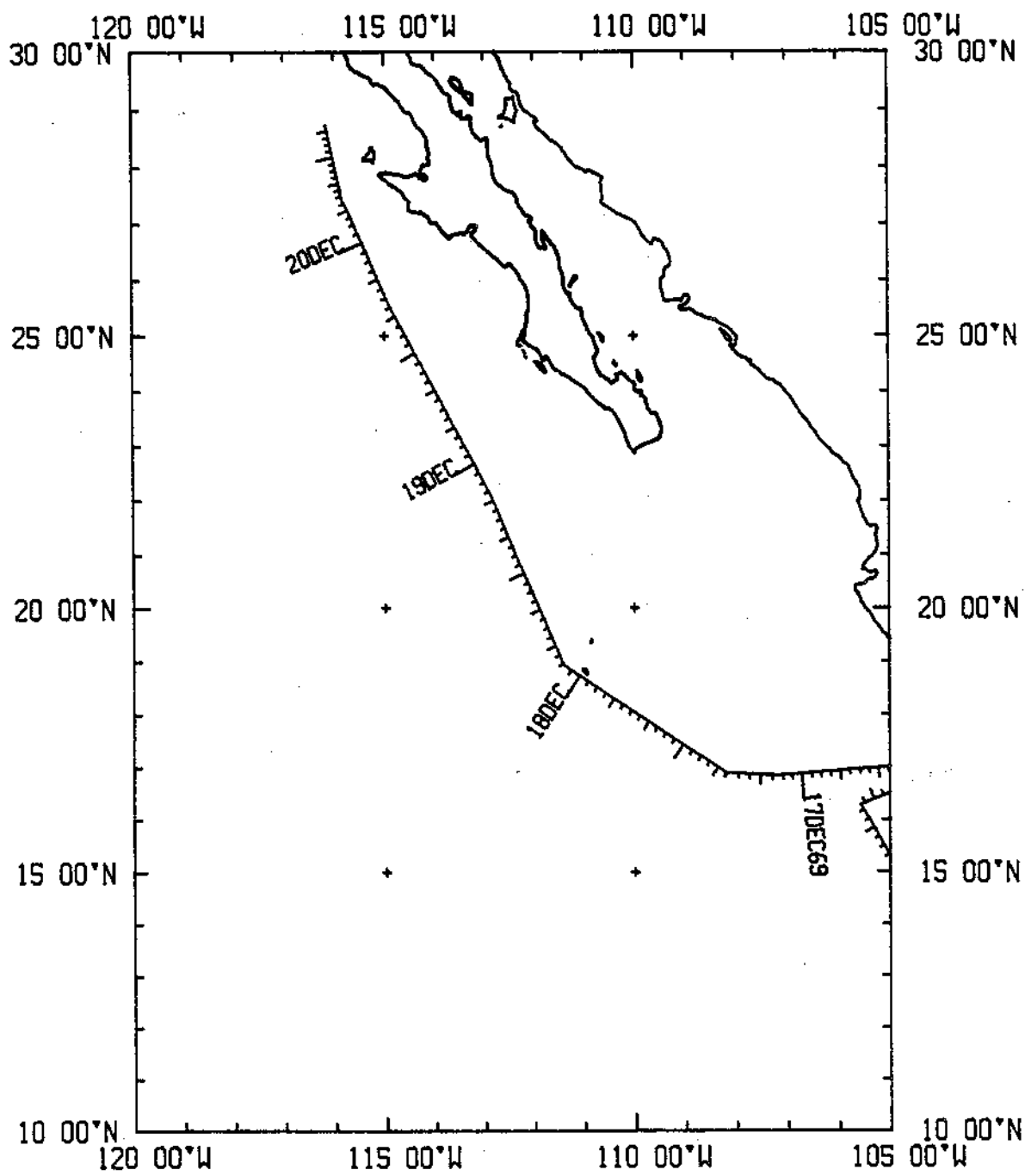
TOTAL MILEAGE OF UNDERWAY DATA COLLECTED

- 1) Cruise - 3568 miles
- 2) Bathymetry - 3558 miles
- 3) Magnetics - 3393 miles

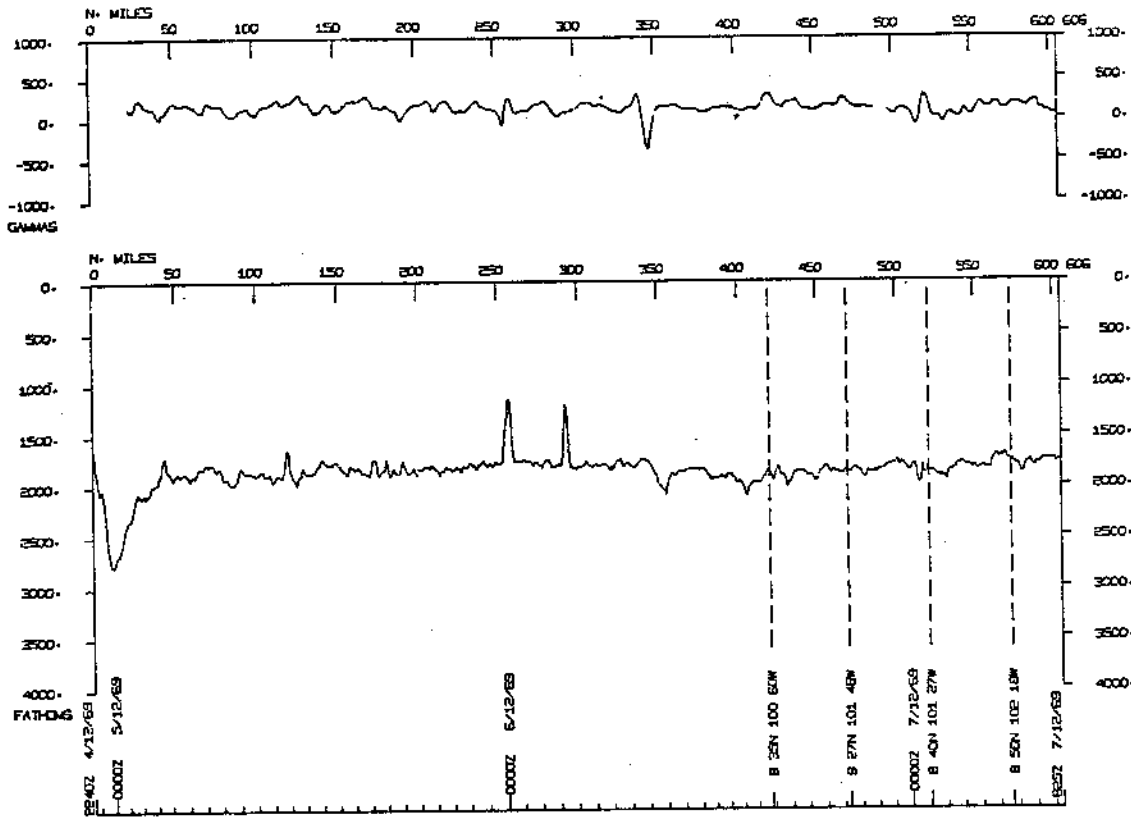
QUEBO2WT
PLOT 1 OF 2



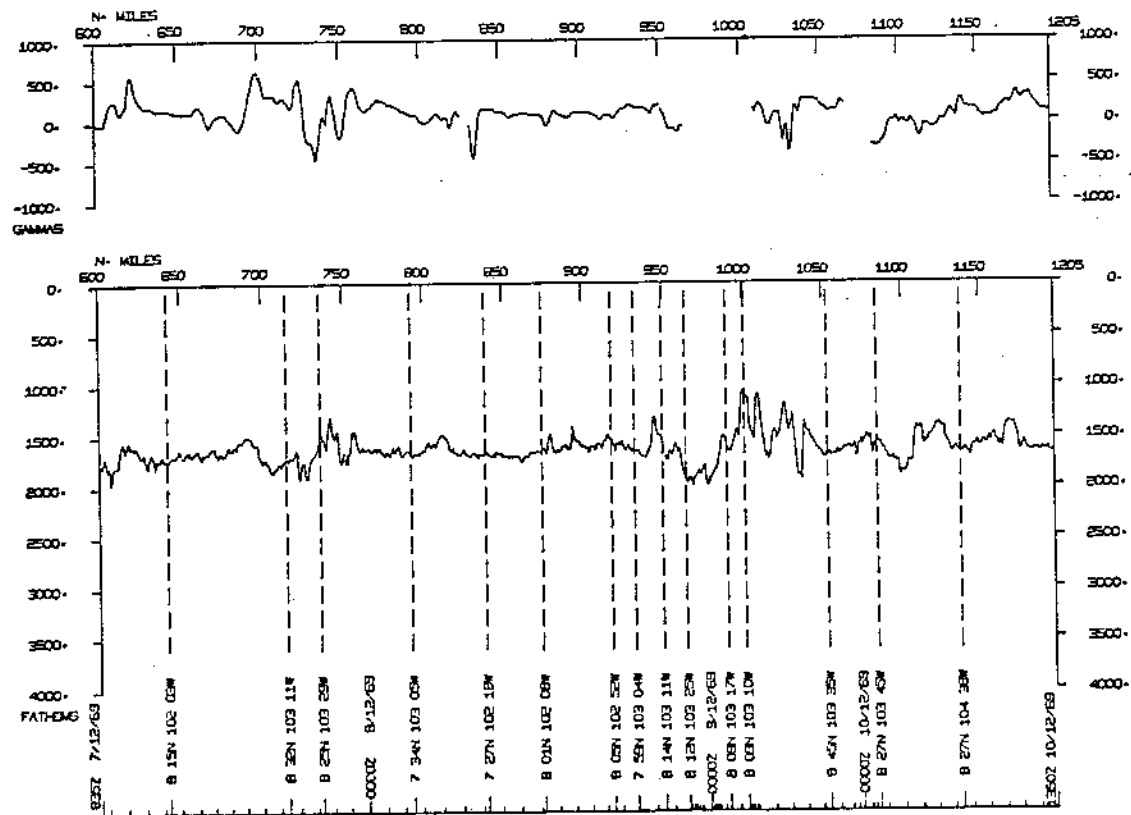
QUEBO2WT
PLOT 2 OF 2



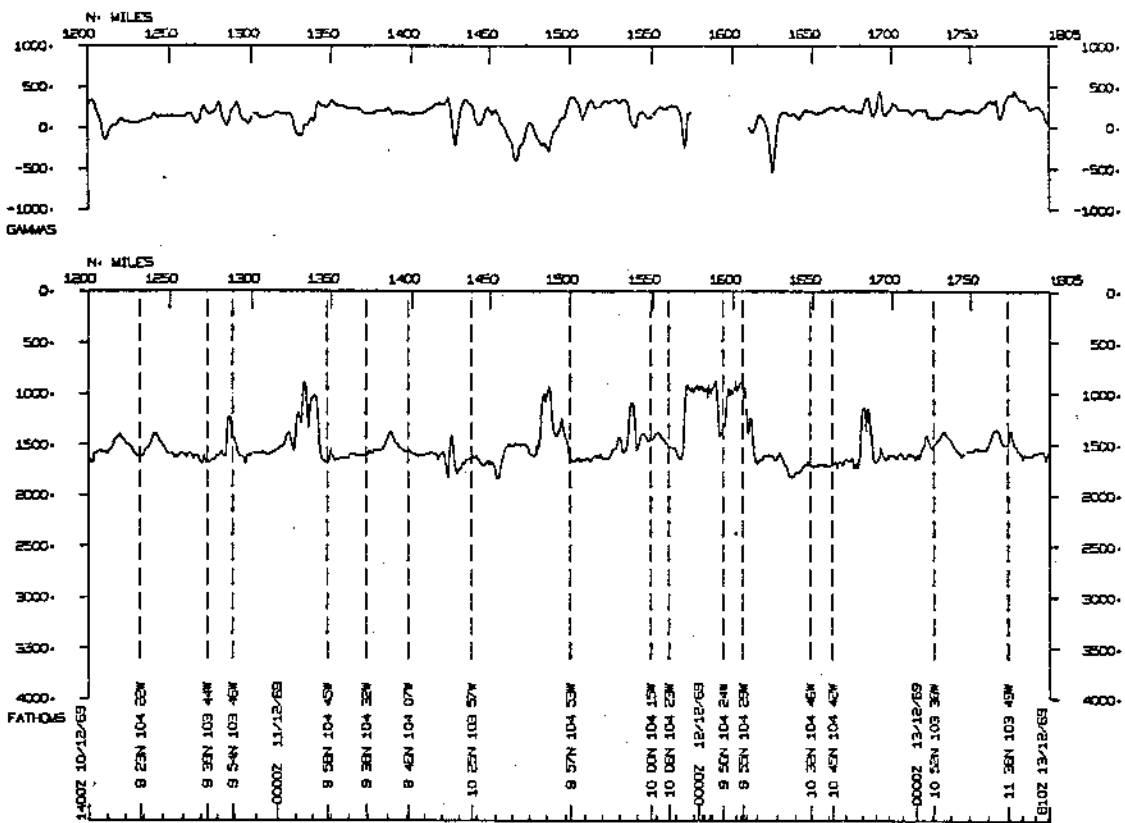
QUEBRADA LEG 02



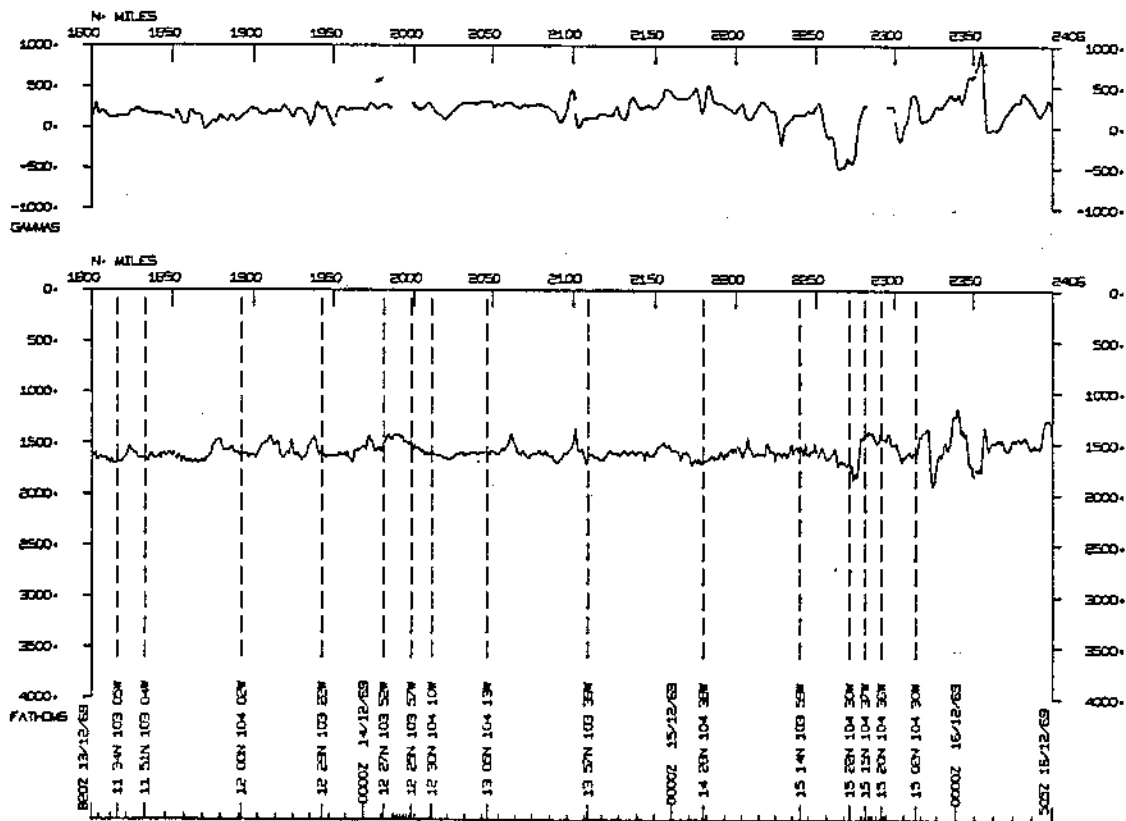
QUEBRADA LEG 02



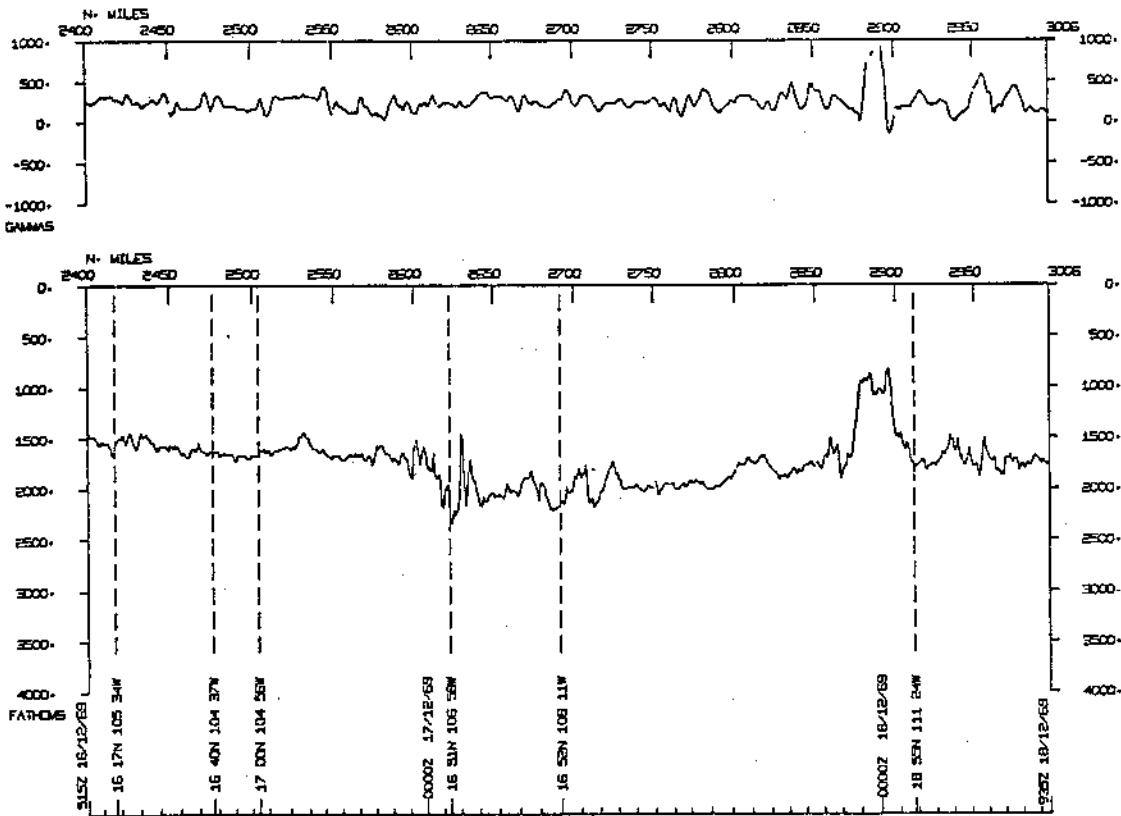
QUEBRADA LEG 02



QUEBRADA LEG 02



QUEBRADA LEG 02



QUEBRADA LEG 02

