

to Pauline with
warm regards from
Bill Smith


Lincoln

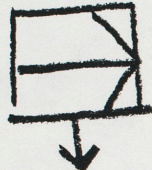
for


Solo Soprano


William O. Smith

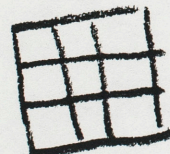
ACCIDENTALS REFER ONLY TO NOTES WHICH THEY IMMEDIATELY PRECEDE EXCEPT IN THE CASE OF REPEATED NOTES.

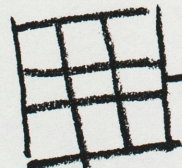
 = FOLD PAGE INTO GLIDER

 = THROW GLIDERS INTO AUDIENCE

 = CRUMPLE PAGE INTO BALL

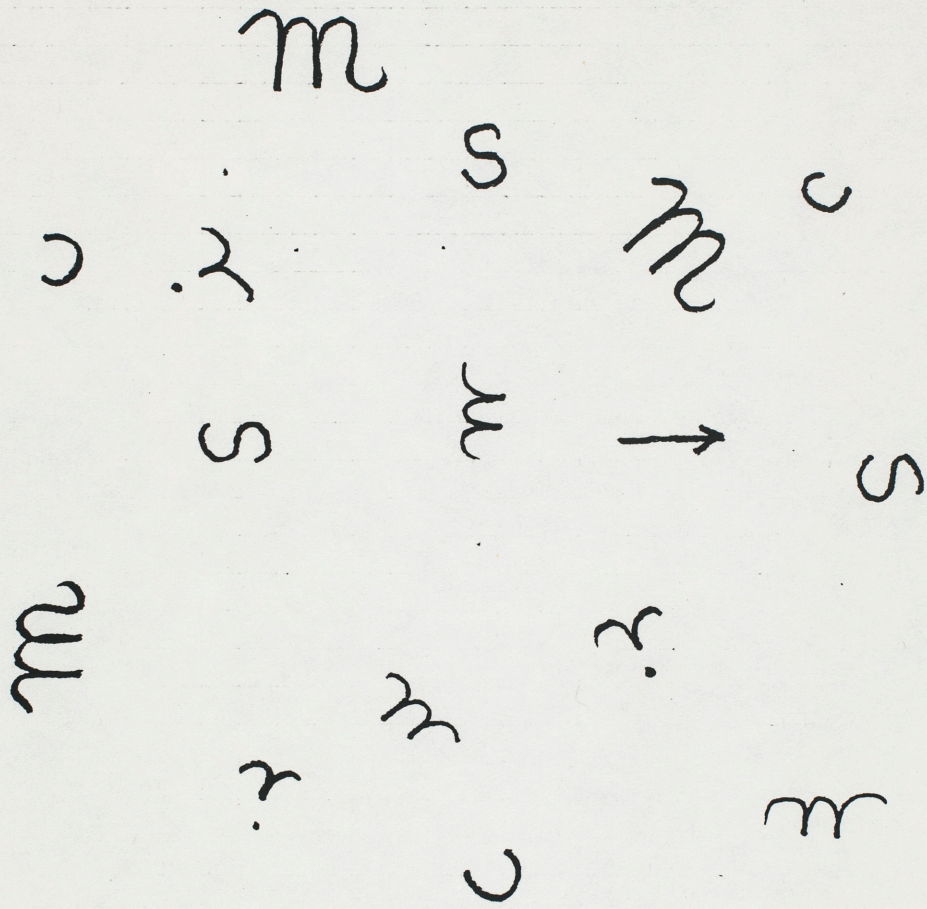
 = THROW BALLS INTO AUDIENCE

 = TEAR PAGE INTO STRIPS

 = THROW STRIPS INTO AUDIENCE

"MIME" SECTIONS MAY USE THE DRAWINGS AS POINTS OF DEPARTURE FOR GESTURES.

A. MIME MUSIC



1. PENSIVE (TURNING PAGE IN CIRCLE WHILE SINGING)

A hand-drawn musical score for a circle song, consisting of five staves arranged in a circle. The lyrics are written below the notes. The notation includes a treble clef on the top staff, a key signature of one sharp (F#) on the bottom staff, and various note values and rests.

RE-TURN-ING

A LINE


GOING A-ROUND

IN A CIRCLE

AND FOR-EV-ER

NEW ER

2. QUASI RECITATIVE

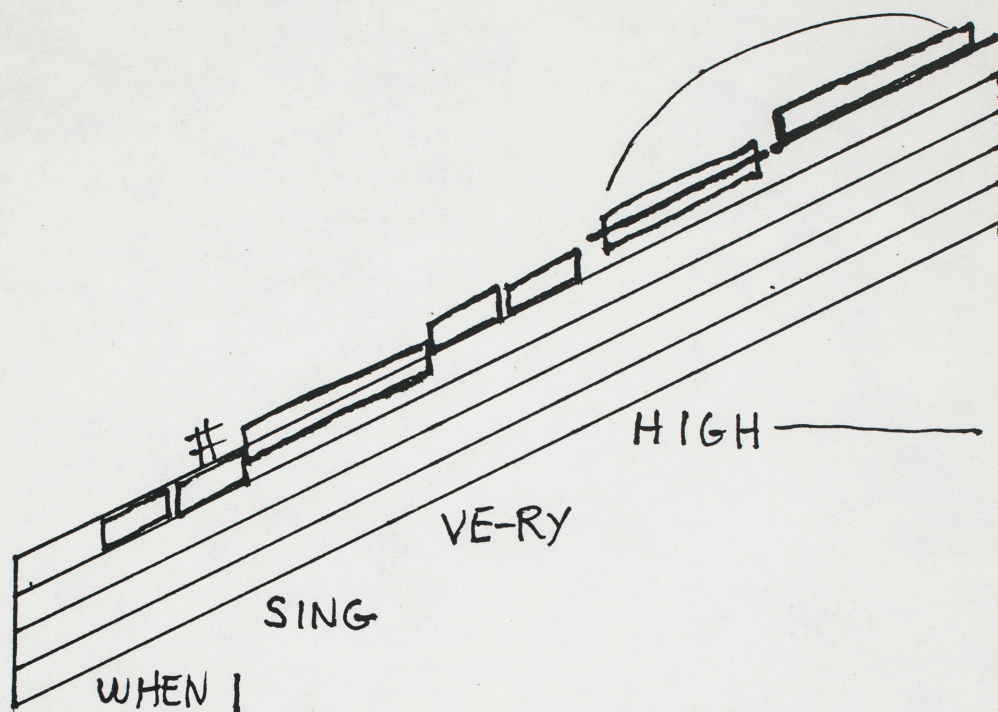
(ON THIS NOTE: )

IF ONLY ONE NOTE COULD I CHOOSE
TO SING

THAT LONELY NOTE WOULD BE
THIS ONE.

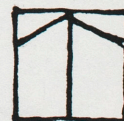


3. STRONG



(SPOKEN)

MY VOICE GETS VERY TIRED



4. RHYTHMIC, ENERGETIC



(IMITATE MALE VOICE)

IF GOD MADE ME TO SING DOWN HERE

6

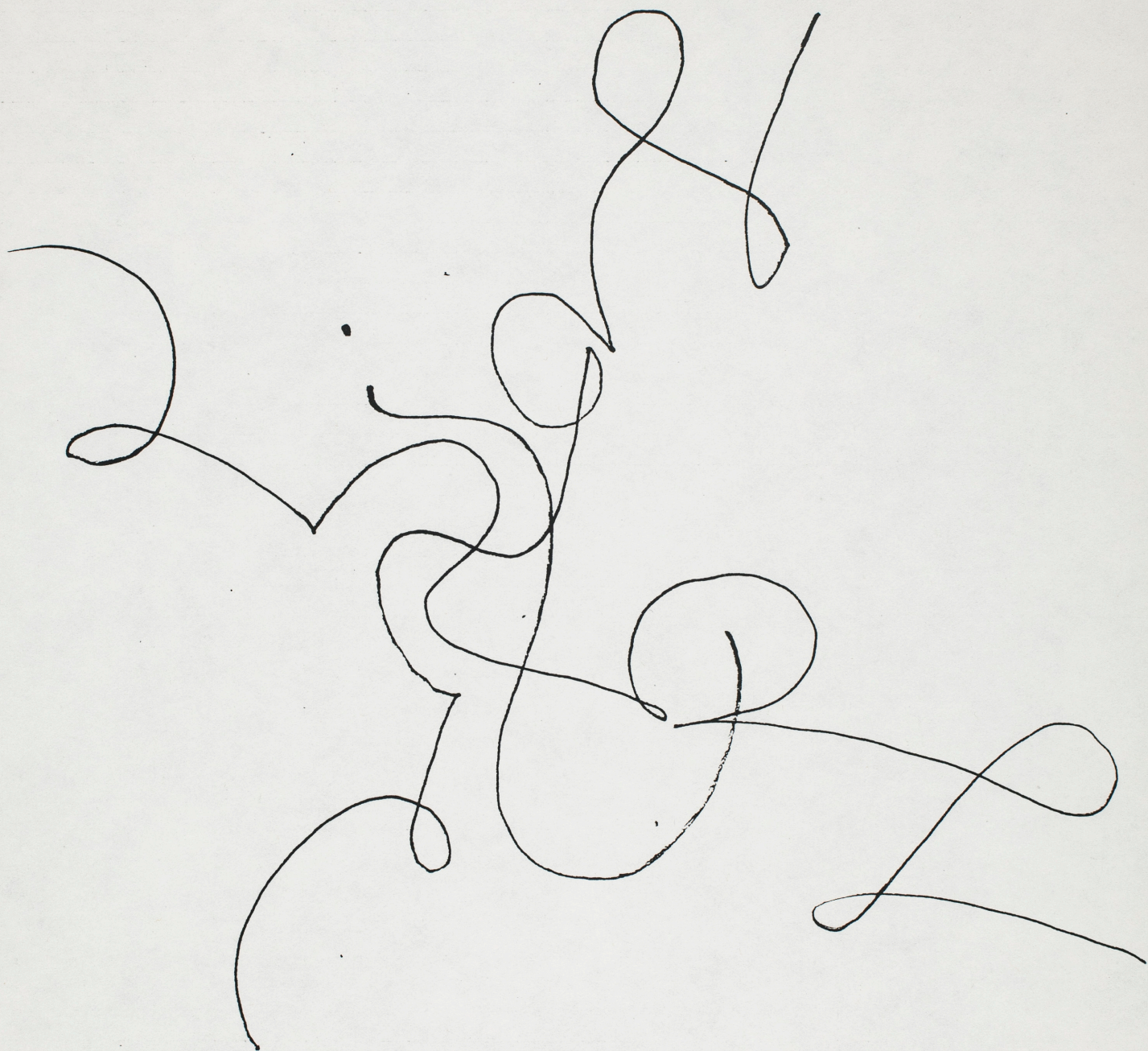
HE WOULD HAVE MADE ME A TEN-OR

I THINK I WOULD LIKE TO GLIDE ——— THROUGH THE AIR
 LIKE A MEL ——— O-DY ——— THAT NEV ——— ER LANDS

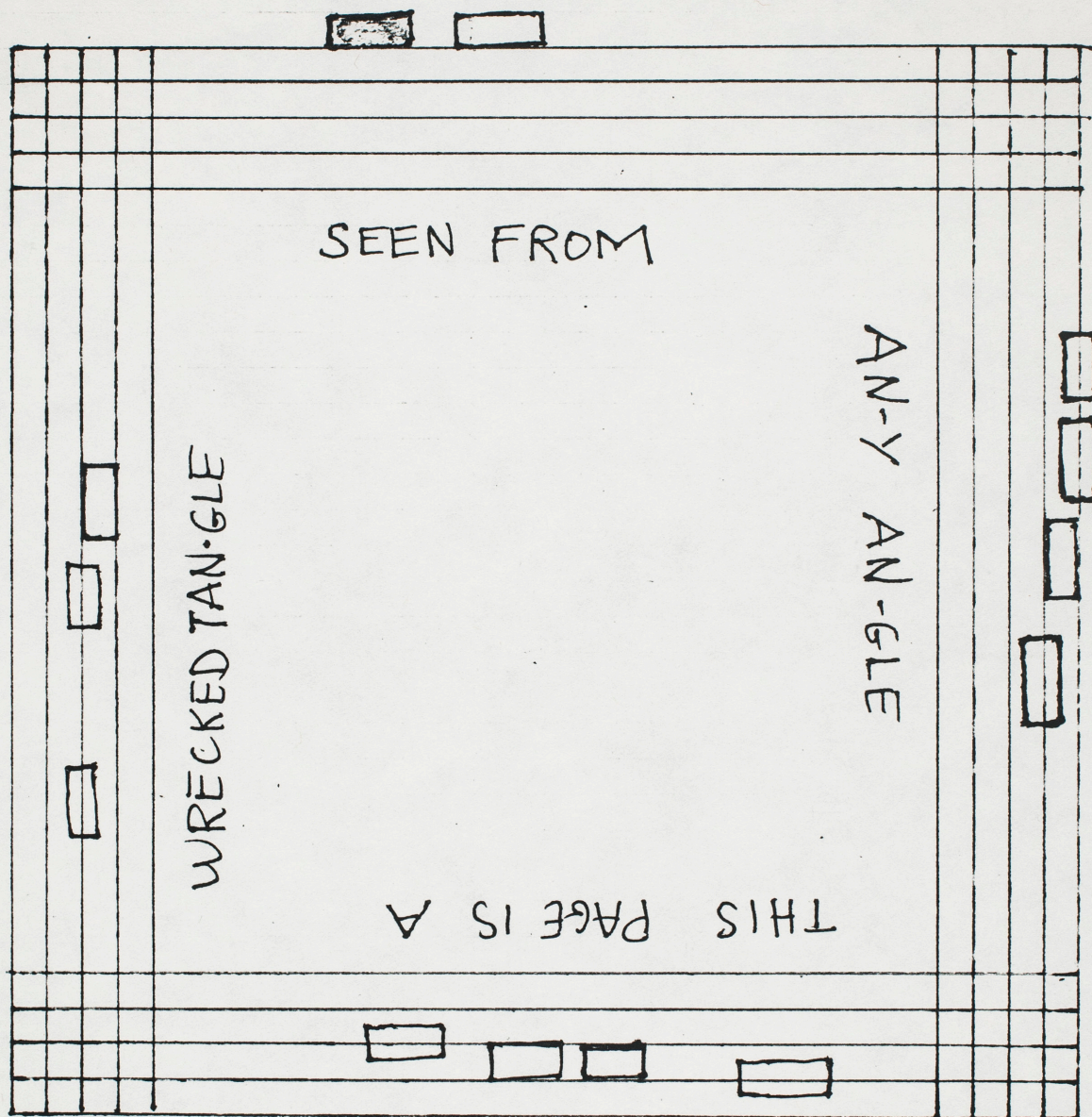
5. LEISURELY

The musical notation is written on a five-line staff. It consists of several measures of music, each containing a rectangular box representing a note. The notes are connected by horizontal lines. The lyrics are written below the staff, with dashed lines indicating the alignment of the notes with the words. The notes are marked with various accidentals: flats (b) and sharps (#). The staff is curved to follow the rhythm of the lyrics. A circled number (4) is written at the end of the first line of music. The second line of music starts with a treble clef symbol. The third line of music has a sharp sign (#) above one of the notes. The fourth line of music has a sharp sign (#) above one of the notes. The fifth line of music has a sharp sign (#) above one of the notes. The lyrics are: "I THINK I WOULD LIKE TO GLIDE ——— THROUGH THE AIR" on the first line, "LIKE A MEL ——— O-DY ——— THAT NEV ——— ER LANDS" on the second line. Below the second line of music, the text "5. LEISURELY" is written. At the bottom left, there is a small diagram of a square with a vertical line down the center and an arrow pointing to the right.

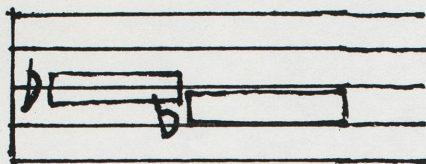
B. MIMÉ LOVE



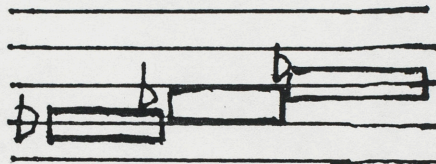
6. PERRY (TURN PAGE FOUR WAYS
WHILE SINGING)



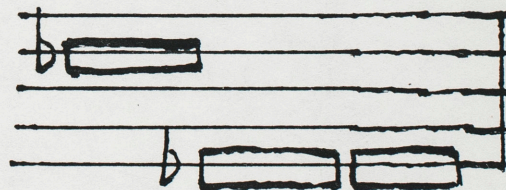
7. QUIETLY



ARE TEARS



MORE WORTH-Y



THAN LAUGH-TER



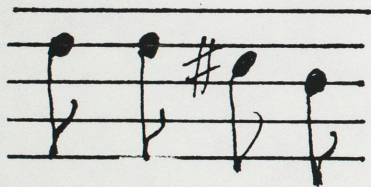
8. BOLD



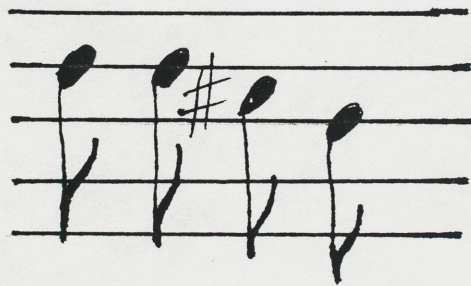
WE MUST, MUST, MUST



A-VOID



RE-PE-TI-TION



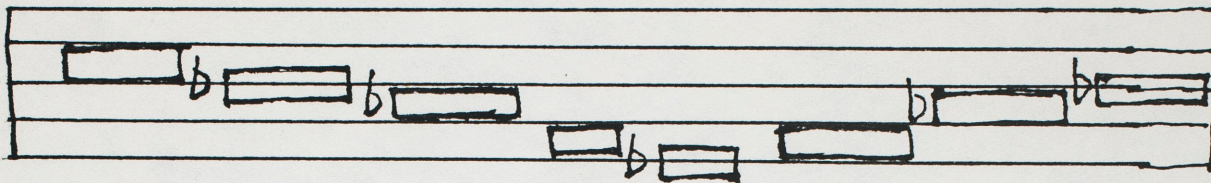
RE-PE-TI-TION



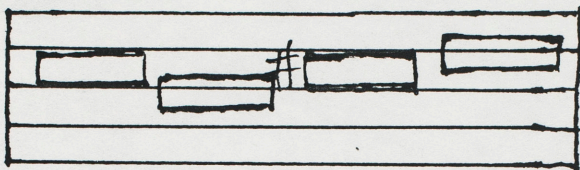
RE-PE-TI-TION



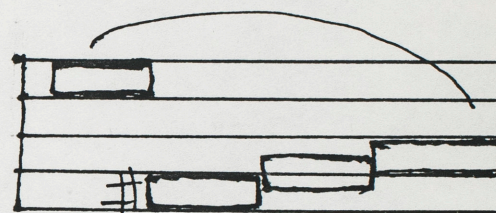
9. SIMPLY



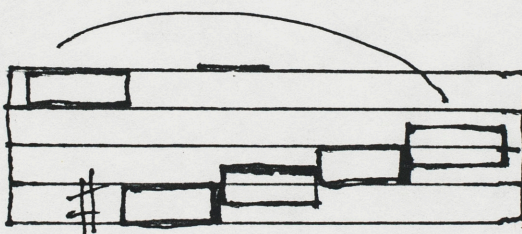
IF FIVE WORDS ON-LY COULD I CHOOSE



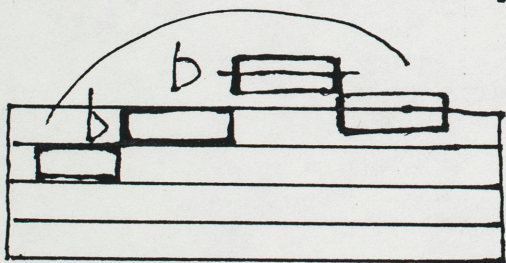
THEY WOULD BE THESE:



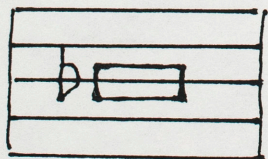
LIVE —————



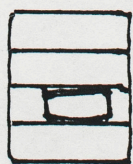
LOVE —————



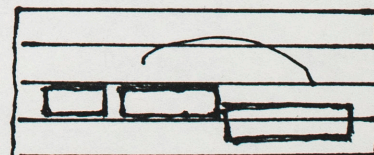
LAUGH —————



LEAVE



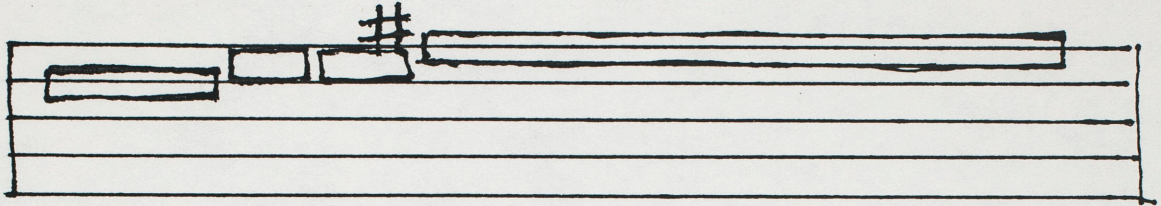
AND



RE-TURN —

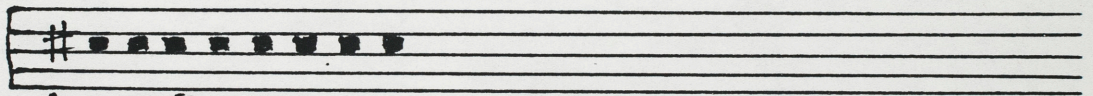


10. BRIGHT



THIS IS A BREVE

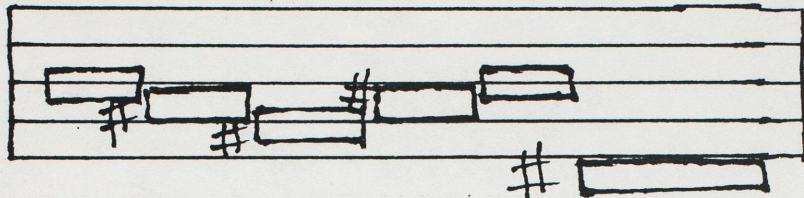
(AS FAST AS POSSIBLE)



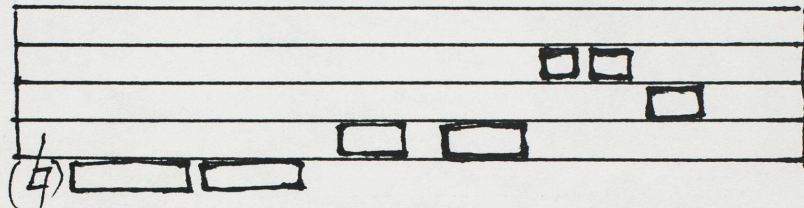
AND THESE ARE HEMI-SEMI-DEMI-QUAVERS



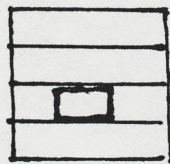
11. SOFT



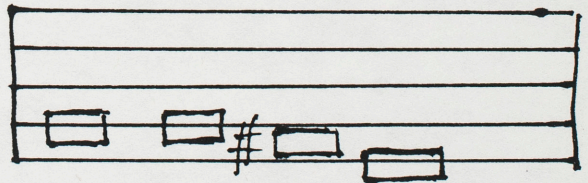
MY TUNE IS VERY SOFT



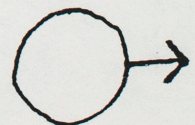
LIKE A MELT-ED POW-DER PUFF



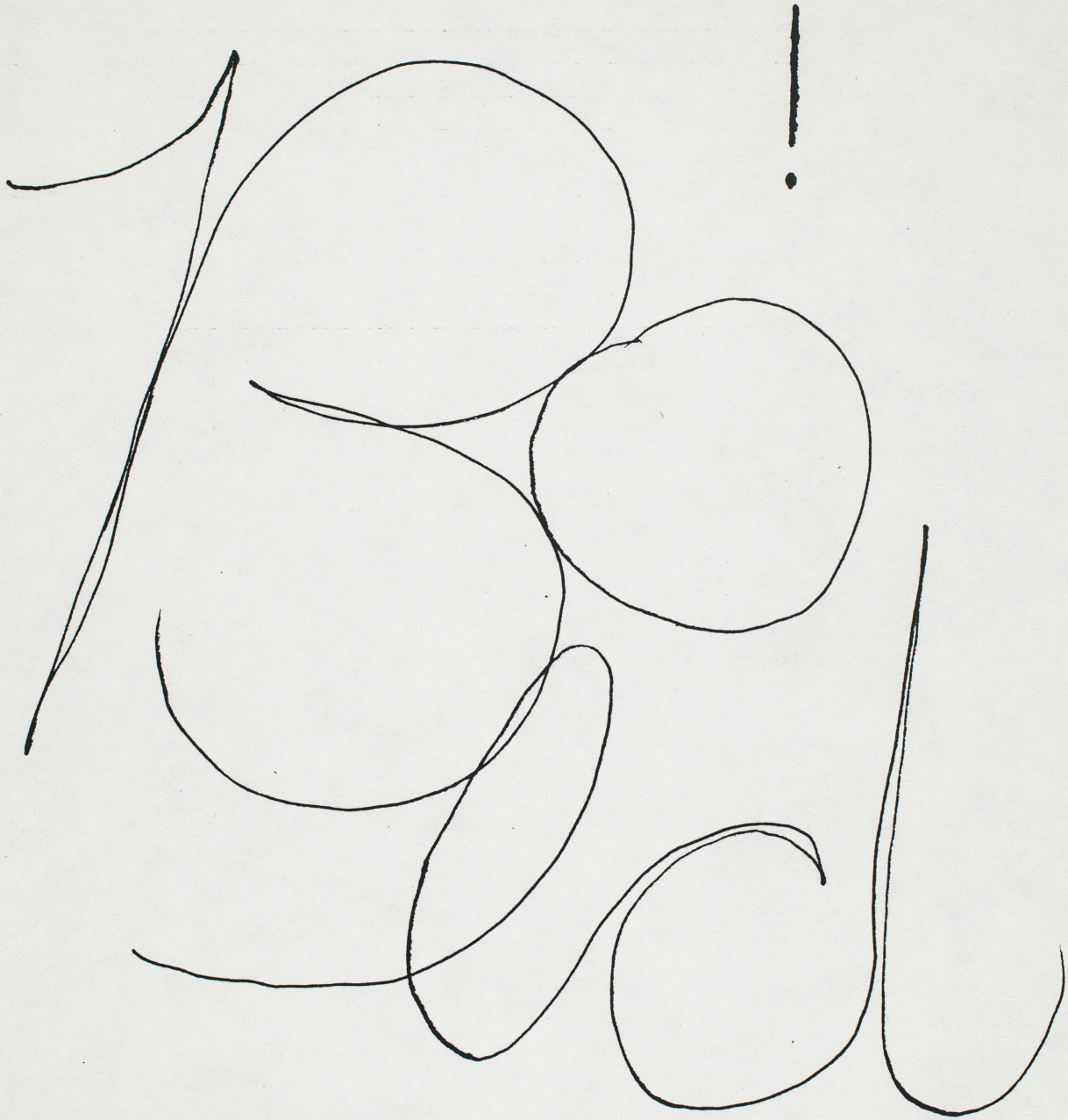
OR



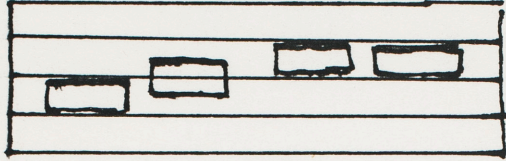
SUM-MER SNOW-BALES



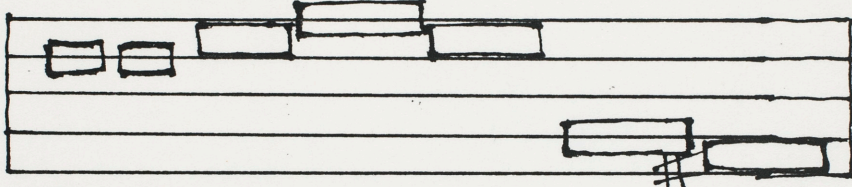
C. MIME BOLDNESS



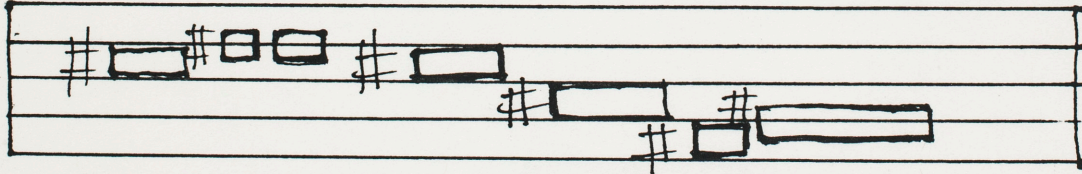
12. FOLKLIKE (TURN PAGE AT EACH V.S.)

(a.)  V.S.

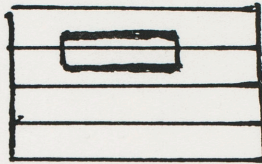
PER-HAPS GOOD AND

(c.)  V.S.

ARE LIKE TWO SIDES OF A PAGE

(e.)  THE OTHER AL-WAYS FOL-LOWS.

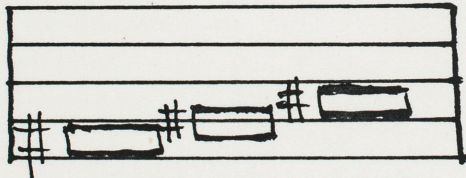
(b.)



V.S.

BAD

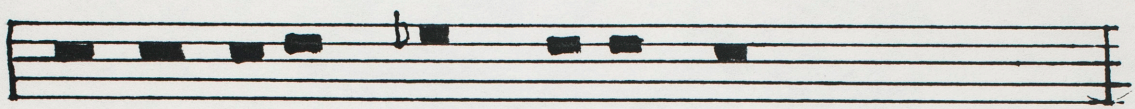
(d.)



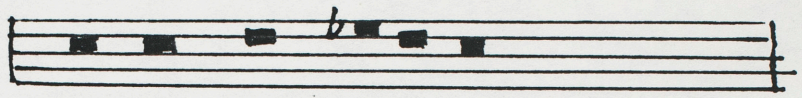
V.S.

WHERE ONE GOES

13. STACCATO

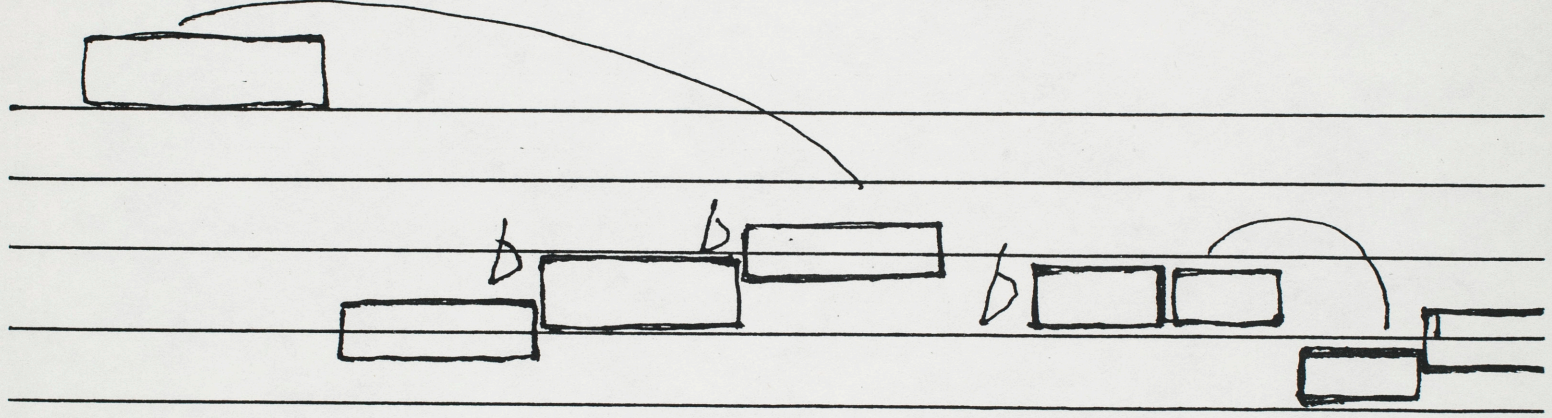


THESE NOTES ARE SHORT AND MAR-CA-TO

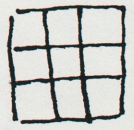


THEY ARE CALLED STAC-CA-TO

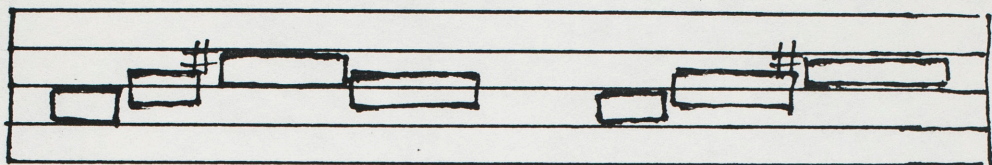
BROAD



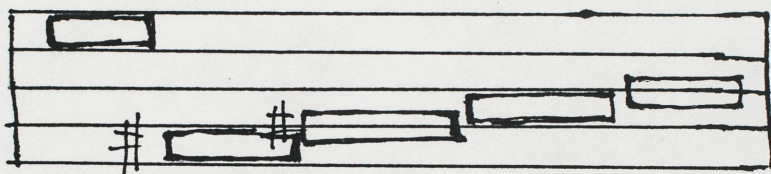
NOT - - - - - LE-GA - - - - - TO



14. NATURALLY



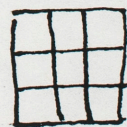
ARE OUR FIRST THOUGHTS MOST TRUTH-FUL



OR SHOULD WE POL-ISH

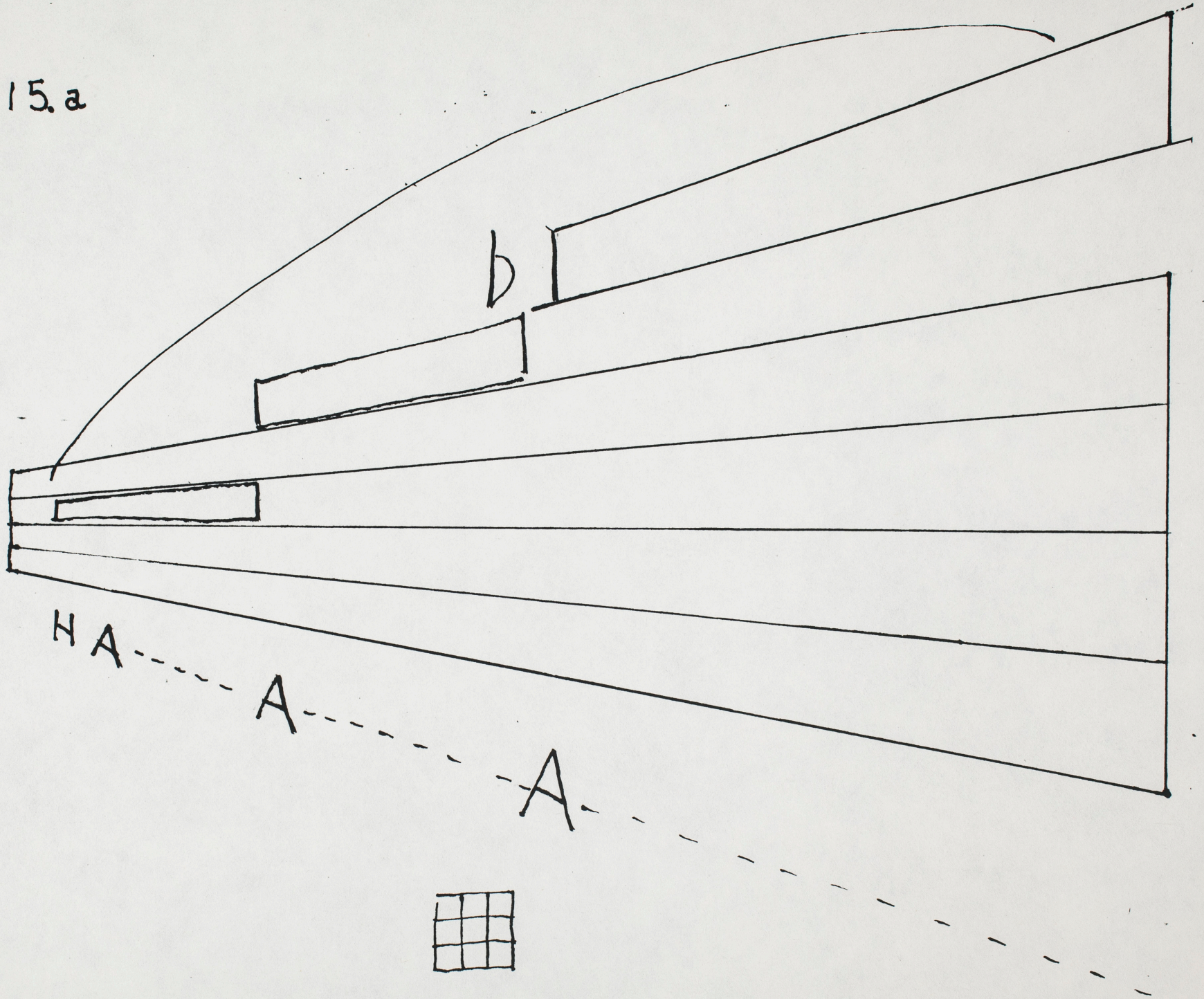


TIL WE'RE WELL CON-CEALED

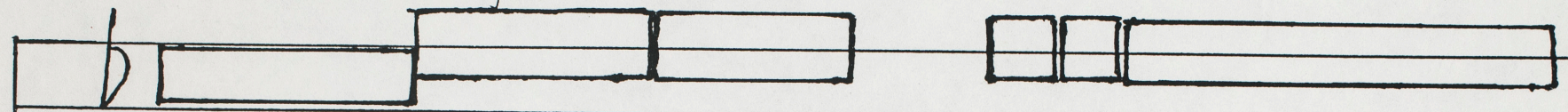


15.a

21

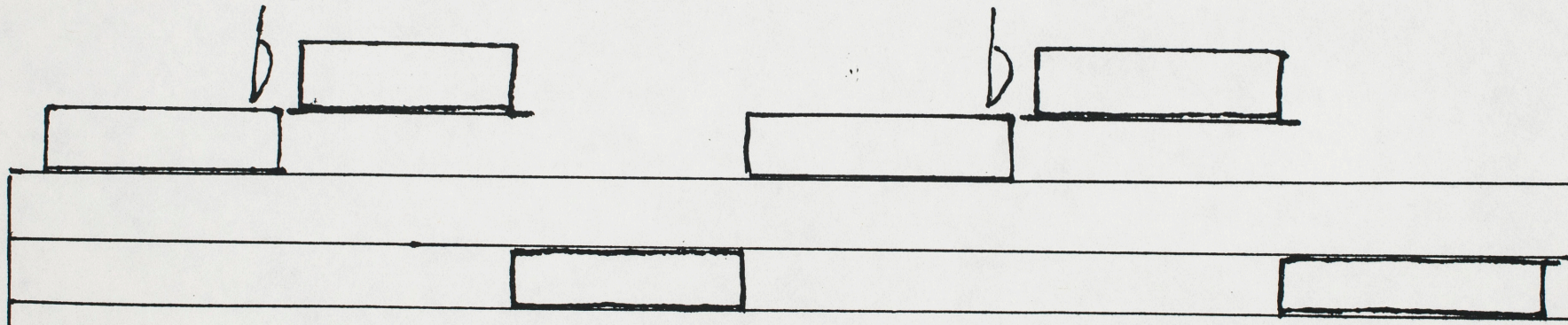


15. VERY LOUD



BY SING-ING VERY LOUD

20



I CAN BREAK YOUR GLASS-ES

16. SIMPLY

