

# Agisoft PhotoScan

Processing Report  
01 November 2014



# Survey Data

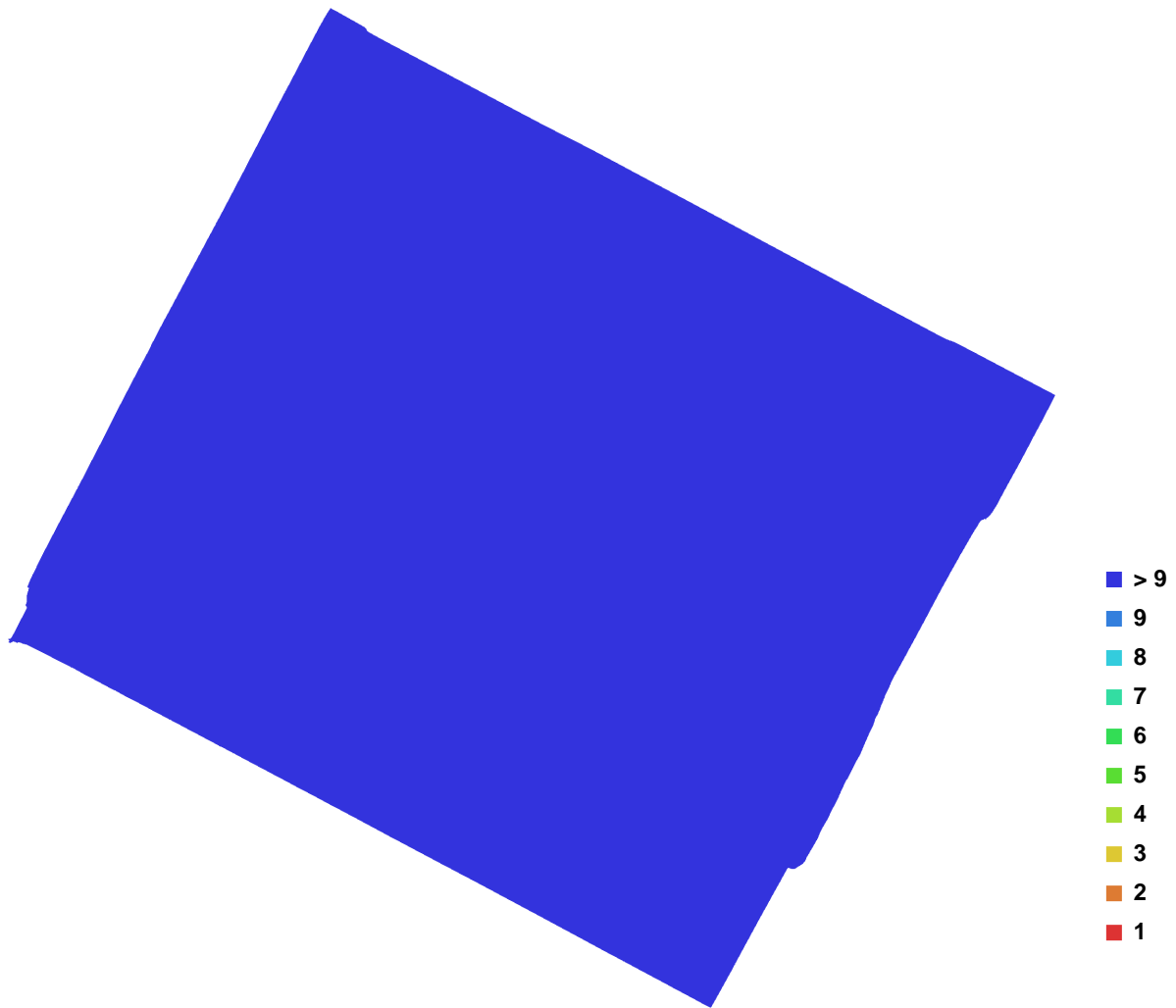


Fig. 1. Camera locations and image overlap.

|                    |                    |                  |              |
|--------------------|--------------------|------------------|--------------|
| Number of images:  | 45                 | Camera stations: | 45           |
| Flying altitude:   | 3.92425 m          | Tie-points:      | 186467       |
| Ground resolution: | 0.000428984 m/pix  | Projections:     | 492250       |
| Coverage area:     | 1.27848e-006 sq km | Error:           | 0.469057 pix |

| Camera Model          | Resolution  | Focal Length | Pixel Size           | Precalibrated |
|-----------------------|-------------|--------------|----------------------|---------------|
| Canon EOS 50D (22 mm) | 4752 x 3168 | 22 mm        | 4.78254 x 4.78254 um | No            |

Table. 1. Cameras.

# Digital Elevation Model

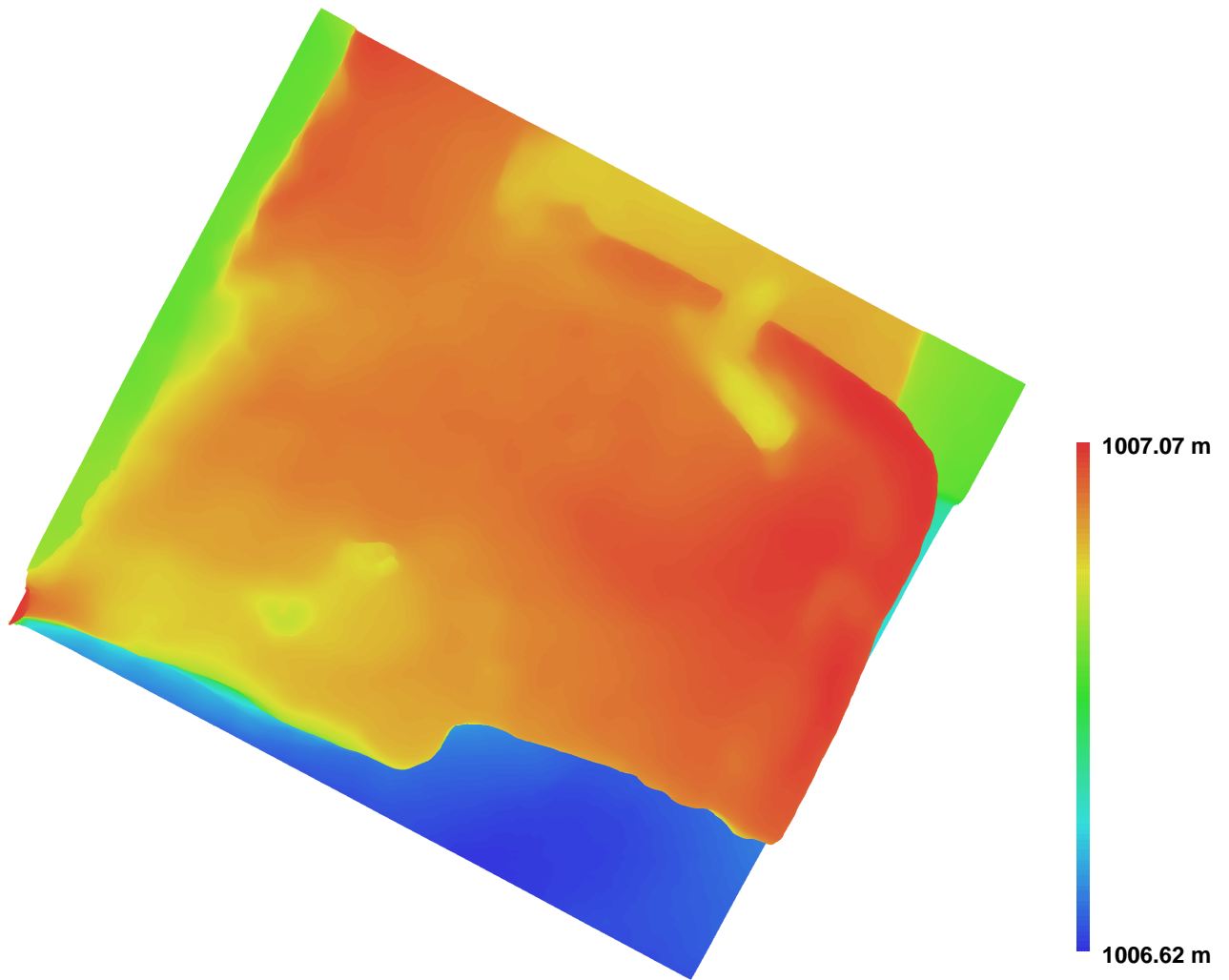


Fig. 2. Reconstructed digital elevation model.

Resolution: 0.00171594 m/pix  
Point density: 339624 points per sq m