

Agisoft PhotoScan

Processing Report
01 November 2014



Survey Data

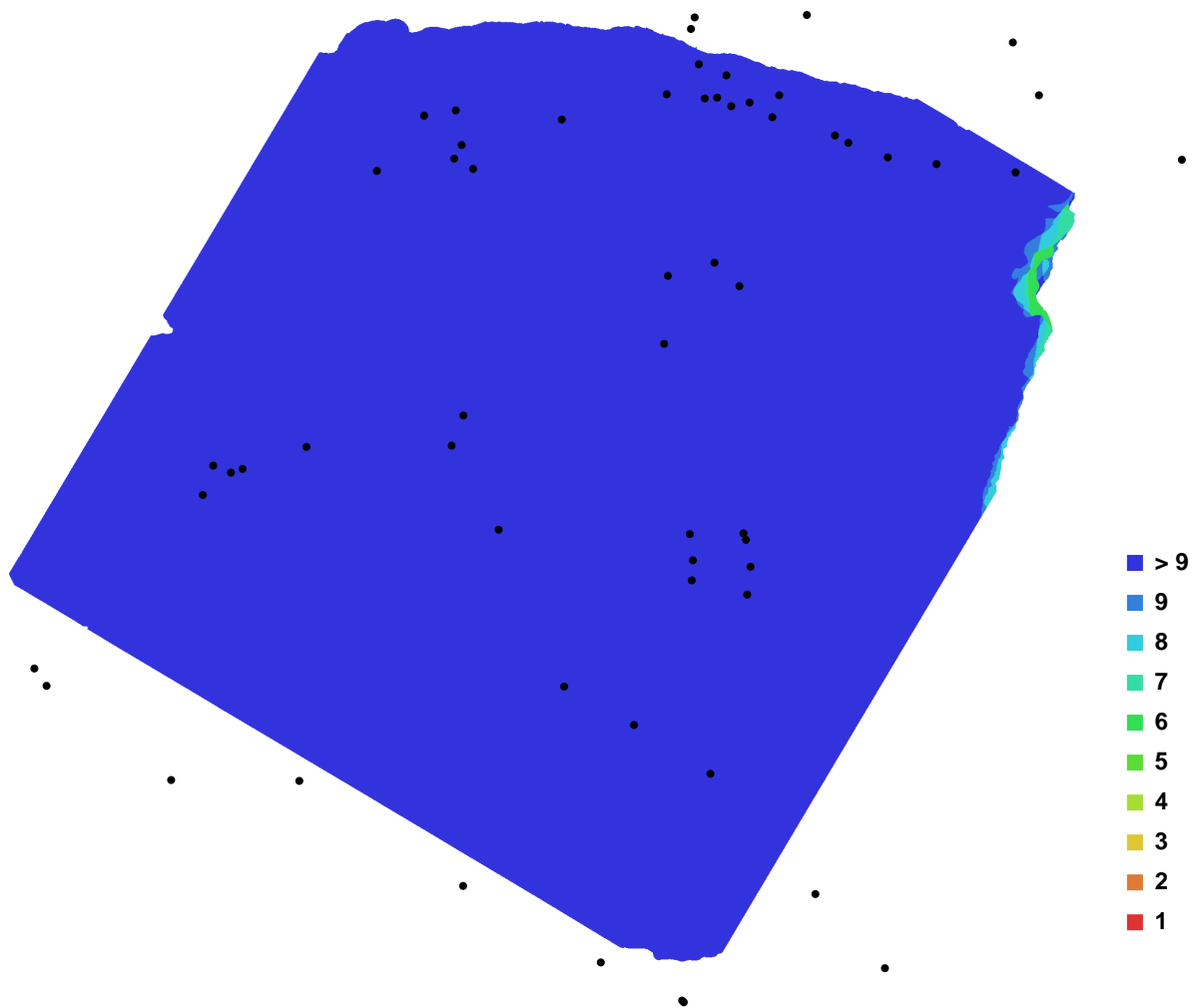


Fig. 1. Camera locations and image overlap.

Number of images:	60	Camera stations:	60
Flying altitude:	4.1803 m	Tie-points:	235252
Ground resolution:	0.000774943 m/pix	Projections:	541653
Coverage area:	3.49597e-005 sq km	Error:	0.526863 pix

Camera Model	Resolution	Focal Length	Pixel Size	Precalibrated
Canon EOS 50D (10 mm)	4752 x 3168	10 mm	4.78254 x 4.78254 um	No
Canon EOS 50D (14 mm)	4752 x 3168	14 mm	4.78254 x 4.78254 um	No
Canon EOS 50D (19 mm)	4752 x 3168	19 mm	4.78254 x 4.78254 um	No

Table. 1. Cameras.

Digital Elevation Model

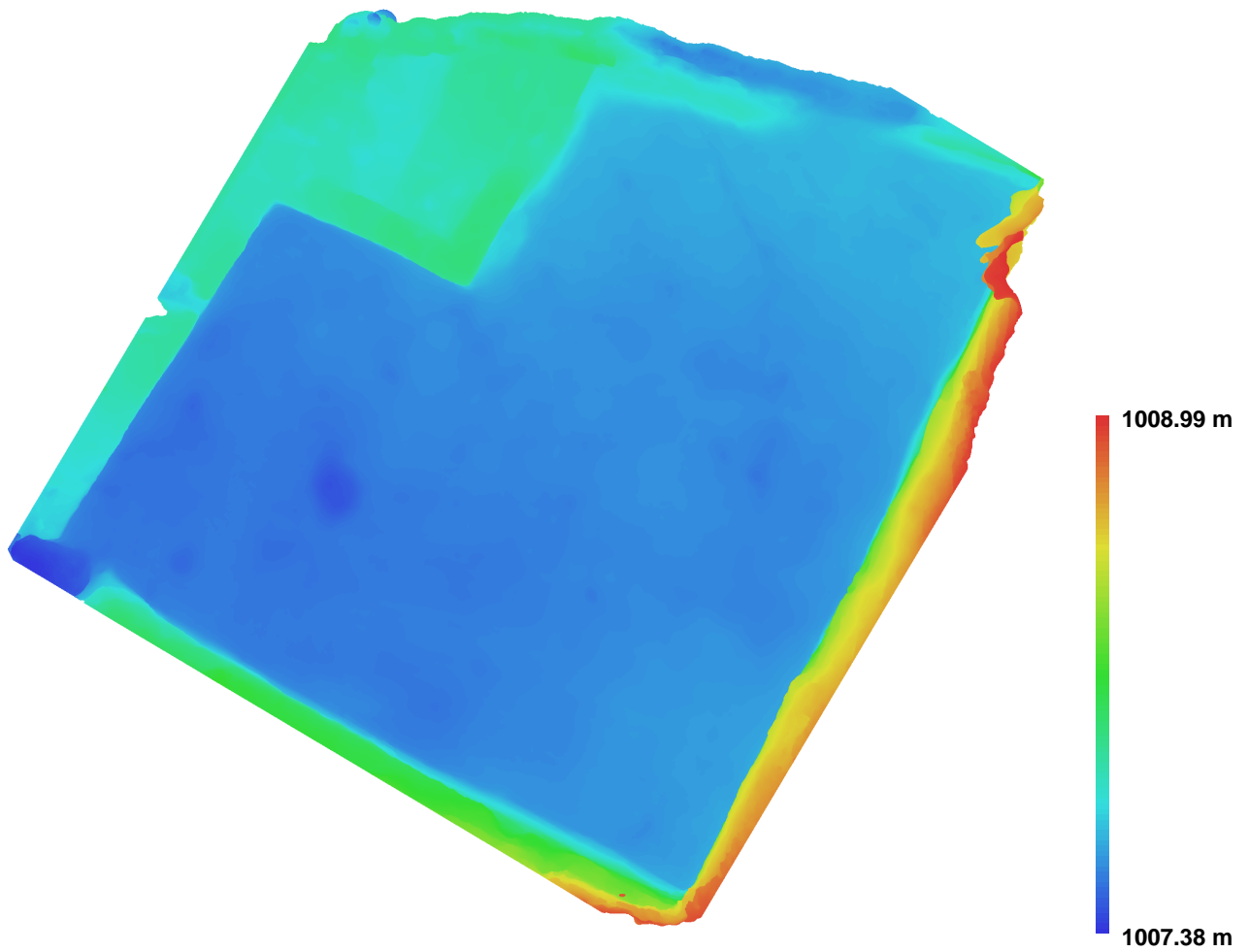


Fig. 2. Reconstructed digital elevation model.

Resolution: 0.00309977 m/pix
Point density: 104074 points per sq m