

AUTO
TOURS

COMPLIMENTS OF
Hotel del Coronado Garage
W. G. WOODWARD, PROP.
CORONADO BEACH, CALIF.



AUTO TOURS

An outline of some of the best automobile trips in San Diego's wonderful back country, including all points of interest in and around San Diego and Coronado.

PUBLISHED BY

Hotel del Coronado Garage
and Auto Service

W. C. WOODWARD, Prop.

MARSTON'S

San Diego, California



There's a Store in San Diego

which, in merchandise, appointments and service, ranks with the fine shops of large cities, east and west. It is MARSTON'S, occupying the entire building pictured above—a complete, high-grade shopping place for California Wearing Apparel. Full stocks of standard goods. You may safely depend upon procuring your California outfit here.

Besides being headquarters for Women's Wear, MARSTON'S has a fine Store for Men, an individual Shoe Store, a unique Gift Shop, a popular Boys' Store, and a delightful Shop for Girls' and Infants' Wear. Rugs and Draperies occupy one entire floor. Large Rest Room; U. S. Post Office Station. Visitors invited.

FOREWORD

ON THE following pages we present an outline of the most interesting automobile trips in San Diego's Mountain Empire, together with some historical facts about the places of interest along the road.

This booklet is presented with the compliments of the **Hotel del Coronado Garage and Auto Service**. We operate a first-class live storage garage, and an auto livery service using only Pierce-Arrow, Packard and Cadillac cars.

This, together with high class drivers having a thorough knowledge of the country, gives our patrons the assurance of service unexcelled.

HOTEL DEL CORONADO GARAGE

PUBLISHERS

CORONADO, CALIFORNIA

THE
SAVAGE CORD

A FINE TIRE FOR FINE CARS

The Savage Cord is so superb in its massive beauty that it adds a touch of greater refinement to even the finest cars.

On beautiful and powerful machines the Savage Cord is in its natural environment. It is distinctive anywhere, but in fine company it assumes most readily its role of "The Aristocrat." It's a tire you can be proud of.



VACATION TIME

THE SPRECKELS "SAVAGE" TIRE CO.
936 Second Street
San Diego

SAN DIEGO

(SAINT JAMES)

the birthplace of California, was founded in 1867 by Alonzo Erastus Horton. It is a city of 100,000 population, and is the southwesternmost city in the United States—being only sixteen miles from the Mexican Border.

The climate of San Diego is the best in California. Only four times in its history has the temperature dropped to 32°—90° being exceeded but nineteen times in the past fifty years. The average summer temperature is 68°, a mean variation of 8° summer and winter. The average rainfall in the city is 10.01 inches—in the back country 30 inches. Ninety percent of the rainfall occurs between November 1st and May 1st.

The people of San Diego enjoy fresh fruit throughout the year. Not a month passes that **some** fruit or berry is not ripe.

The architecture predominating in San Diego is the Mission or Spanish Colonial type, the finest examples of which are the Exposition buildings in Balboa Park.

Balboa Park consists of 1400 acres, and is world-renowned for the exquisite beauty of its Exposition Grounds. A wonderful Zoo lies in the north end of the grounds with the animals all confined in the surroundings best suited to their species.



"The House by the Side of the Road"

A Visit to Southern California would be incomplete without a dinner at "GEORGE'S."

Serving Steaks and Lobsters 30 Miles From Hotel del Coronado
On the Coast Highway

Nothing But the Best---

Quality

Automobile Painting
and Varnishing

MONOGRAMS

H. V. LEE CO.

Ask at Garage
or Call 636-62

1041 Columbia Street
Near Broadway

AUTO DISTANCES FROM SAN DIEGO

	Miles		Miles
Alpine Tavern	30.3	La Mesa	11.0
Anaheim	103.0	La Playa	7.9
Ballena	46.7	La Presa	10.2
Banner	63.0	Los Flores	50.4
Barrett	35.0	La Jolla	14.4
Barrett Dam	42.0	Lemon Grove	9.7
Bernardo	30.3	Los Angeles	131.0
Bonita	10.5	Mesa Grande	53.6
Bonsall	54.5	Miramar	15.0
Bostonia	17.5	Mountain Springs	85.1
Boulevard	70.1	National City	4.7
Buckman Springs	54.4	Nestor	12.9
Buena	44.8	New Towne	65.0
Camp Kearney	17.0	Ocean Beach	7.0
Campo	53.8	Oceanside	42.7
Cardiff	29.0	Orange	98.0
Carlsbad	39.8	Otay	11.0
Chula Vista	7.5	Pacific Beach	9.0
Clover Flat	55.0	Pala	67.8
Coronado	1.0	Palm City	11.4
Coyote Wells	100.0	Pine Hills	62.0
Cuyamaca	56.2	Point Loma	12.0
Dehesa	21.6	Potrero	43.5
Del Mar (Stratford Inn)	24.4	Poway	24.0
Descanso	42.6	Rainbow	70.1
Dulzura	29.8	Ramona	38.1
El Cajon	15.3	Riverside	119.0
El Centro	127.0	Roseville	6.0
Encanto	6.6	San Juan Capistrano	73.0
Encinitas	30.9	San Luis Rey	47.1
Escondido	35.3	San Marcos	41.0
Fallbrook	62.2	San Pasqual	44.6
Flinn Springs	25.0	Santa Ana	95.0
Foster	25.1	Santa Ysabel	52.6
Fullerton	106.0	Santee	18.3
Grossmont	13.3	San Ysidro	14.9
Guatay	46.0	Sorrento	15.2
Hipass	63.0	Spring Valley	11.9
Hemet	117.5	Sunnyside	12.5
Hills Valley	62.0	Tecate	44.1
Hulburd Grove	43.0	Temecula	74.0
Imperial Beach	13.9	Tia Juana	16.1
Jacumba	76.2	Tijuana, Mex.	19.0
Jamacha	18.7	Tustin	93.0
Jamul	21.0	Valley Centre	44.9
Julian	64.8	Verruga	74.0
La Costa	34.6	Vista	47.8
Laguna	62.0	Warner Springs	69.1
Lakeside	21.4	Whittier	118.0
Lakeview	20.0	The Willows, A Mt. Resort	33.1

Y^e ALPINE TAVERN

Alpine, California

Cottages

Cottages

A Beautiful Mountain and Health Resort

Located on the paved highway 30
miles from San Diego.

An ideal drive through beautiful
country. Excellent food served.

Tennis, Croquet, Shooting,
Other Mountain Sports

Invigorating Mountain air--Appetizing
Meals by French Chef

RECREATION

You'll enjoy a stay of a few hours, days
or weeks at Y^e Alpine Tavern

K. J. DOWD
Manager

GEO. H. MILLENER
Owner

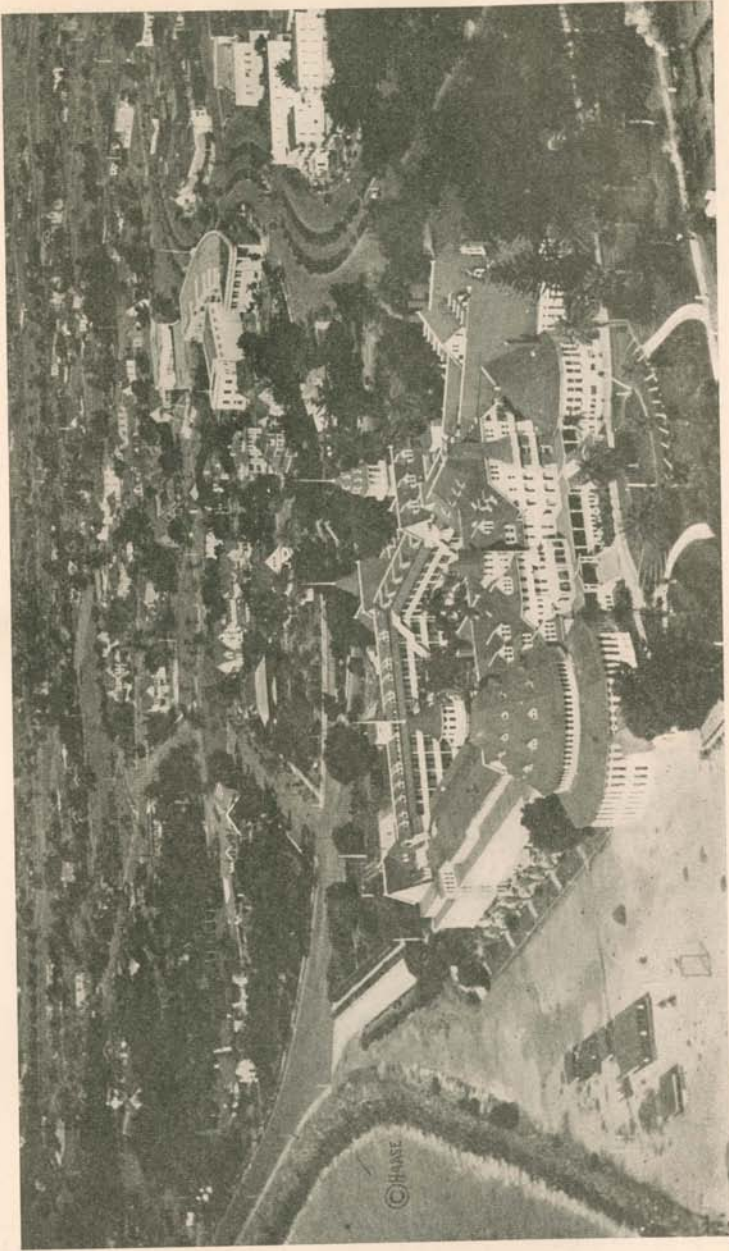
Telephone, El Cajon 231

**MILEAGE FROM SAN DIEGO TO SAN FRANCISCO
COAST ROUTE, 577.5 MILES**

	Distance from San Diego	Distance from San Francisco	Distance Between Towns
San Diego	577.5	0
La Jolla	14	563.5	14
Del Mar	25	552.5	11
Oceanside	43	534.5	18
San Juan Capistrano	73	504.5	30
Santa Ana	96	481.5	23
Anaheim	103	474.5	7
Fullerton	107	470.5	4
Whittier	119	458.5	12
Los Angeles	132	445.5	13
Hollywood	140	437.5	8
Calabasas	159	418.5	19
Newberry	177	400.5	18
Camarillo	186	391.5	9
Montalvo	197	380.5	11
Ventura	203	374.5	6
Carpinteria	219.5	358	16.5
Summerland	224.5	353	5
Montecito	227	350.5	2.5
Santa Barbara	231	346.5	4
Goleta	237.5	340	6.5
Gaviota	261	316.5	23.5
Las Cruces	264	313.5	3
Los Alamos	287	290.5	8
Santa Maria	309.5	268	22.5
Arroyo Grande	324.5	253	15
San Luis Obispo	340.5	237	16
Atascadero	359	218.5	18.5
Paso Robles	370	207.5	11
San Miguel	379	198.5	9
King City	424	153.5	19.5
Soledad	445.5	132	21.5
Salinas	470.5	107	16.5
San Juan	487	90.5	16.5
Gilroy	499	78.5	12
Morgan Hill	510	67.5	11
San Jose	529	48.5	19
Santa Clara	532.5	45	3.5
Palo Alto	547.5	30	15
San Mateo	559	18.5	11.5
Colma	570.5	7	11.5
San Francisco	577.5	0	7

San Diego to Los Angeles 132 miles
 Los Angeles to San Francisco 455.5 miles

577.5 miles



Courtesy, San Diego Calif. Club

CORONADO

**MILEAGE FROM SAN DIEGO TO SAN FRANCISCO
INLAND ROUTE, 601 MILES**

	Distance from San Diego	Distance from San Francisco	Distance between Towns
San Diego	601
Camp Kearny	17	584	17
Escondido	35.5	565.5	18.5
Vista	47.8	553.2	12.3
Bonsall	54.5	546.5	6.7
Fallbrook	62	539	7.5
Temecula	76.5	524.5	14.5
Elsinore	95	506	18.5
Perris	106.5	494.5	11.5
Riverside	123.5	477.5	17
Ontario	140.5	460.5	17
Pomona	146.5	454.5	6
Los Angeles	179.5	421.5	33
Glendale	187.5	413.5	8
Burbank	191.5	409.5	4
San Fernando	202	399	10.5
New Hall	212	389	10
Saugus	214	387	2
Castaic	218.5	382.5	4.5
Ridge Road House	228	373	9.5
National Forest Inn	235	366	7
Sandbergs	251	350	16
Caswells	258	343	7
Tejon Pass	262	339	4
Lebec	265	336	3
Fort Tejon	270.5	330.5	5.5
Bakersfield	305.5	295.5	35
Delano	337	264	11
Tulare	366	235	29
Visalia	376	225	10
Goshen	382.5	218.5	6.5
Fresno	416.5	184.5	34
Madera	438	163	21.5
Merced	471	130	33
Turlock	495	106	24
Modesto	508	93	13
Manteco	525	76	17
Tracy	538	63	3.5
Altamont	552	49	14
Livermore	560	41	8
Haywards	580	21	20
San Leandro	586	15	6
Oakland	595	6	6
San Francisco	601	6

San Diego to Los Angeles 179.5 miles
 Los Angeles to San Francisco 421.5 miles

601 miles

Page Eleven

SAVAGE TIRES

Also
HEWITT &
GOODRICH
TIRES &
TUBES

AUTOMOBILE ACCESSORIES

VEEDOL OILS

Vulcanizing and Retreading

Pickford-Barker Tire Co.

Phone 634-86

Corner 3rd and B Streets

WINDANSEA

AT LA JOLLA

"There the Food Alone Is Worth the Trip"

Luncheon---Afternoon Tea---Dinner

Telephone, La Jolla 225

Eyes Tested

Lens Duplicated

C. W. CARD

OPTOMETRIST AND OPTICIAN

1122 Fifth Street
Phone Main 765

San Diego, California
Opposite Marstons

AUTO TOURS

An outline of ten of the most interesting automobile tours
within easy motoring distance of San Diego

TOUR NO. 1

POINT LOMA TRIP

LEAVING Hotel del Coronado we cross the ferry to San Diego, viewing en route the myriads of destroyers and other naval craft, driving through the business district past the High School to the Stadium. This Stadium will seat 30,000 people. Leaving, we pass on through Balboa Park to the Main or Street Car entrance to the Panama-California Exposition Grounds. This Exposition was held during the years 1915-16. Here is located the largest outdoor organ in the world, given to the people by Mr. John D. Spreckels. The buildings are nearly all intact, a fund having been subscribed during 1920 to rebuild, repair and make permanent these most beautiful Exposition Grounds. One of the most interesting and unique features of the Exposition Grounds is the Japanese Tea Pavilion, which is open every day to visitors. It is a typical Japanese garden and the very picture of the Orient. Tea and light lunches are served by Japanese lady attendants, attired in their native costumes. Out of the park we now pass over the Cabrillo Canyon Bridge, through the residential district, down the grade to Old Town and stop at Ramona's Marriage Place, made famous by Helen Hunt Jackson's story of the early days of California. Directly across the street is the spot where, in 1896, General Fremont raised the first American Flag in California. The proprietor of Ramona's Marriage Place, Mr. Getz, is one of the best authorities living today on the History of the California Missions, and with appropriate stage settings gives daily lectures upon California and the early Missions. As we leave for Point Loma we pass the ruins of the old jail and burial grounds. On the way to Point Loma, looking to the left are the barrack buildings, offices, etc., of the U. S. Marine Corp Base. The group of buildings just at the turn below the Point Loma Country Club constitute the U. S. Naval Training Base. Passing on to the end of Point Loma we see a view that cannot be equalled—Coronado, North Island, The Silver Strand, San Diego, the Incopah Range, and, 140 miles distant, the snow-capped peaks of the San Bernardino mountains. Retracing our way, we pass again the headquarters of the International Theosophical Society. Visitors are admitted at certain hours. We now go down on the west side of Point Loma to Sunset Cliffs, a beauty spot created by Mr. A. G. Spaulding. The return trip is made by way of Ocean Beach, Loma Portal and India Street by way of the Ferry to Coronado.

The back country of San Diego harbors many resorts, among them being Grossmont Inn, The Willows, Alpine Tavern, Hulburt Grove, Pine Hills, Kenilworth Inn, Powam Lodge, Warner's Hot Springs, Vale View Ranch Inn, Spindrift, Stratford Inn, George's Place, The Twin Inns, etc.



The ALHAMBRA



OUR NEW \$50,000 BUILDING IN TIJUANA.

One of the West's leading show and interest places is

THE ALHAMBRA

DINING
DANCING
DIVERSIONS

--its genteel atmosphere makes it "A Refined Place for Refined People"---where absolutely pure and genuine goods at the lowest prices are guaranteed!

—Adjoining—

THE BIG CURIO STORE

Tourist's Headquarters which displays a complete stock of Mexican Curios.

TIJUANA

Old Mexico

--a quick, delightful and scenic ride to this quaint city "Across the River."

The Alhambra is Owned and Operated by the

LOWER CALIFORNIA COMMERCIAL CO., INC.

TOUR NO. 2

TIJUANA, MEXICO

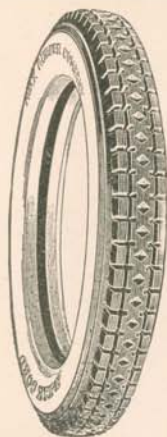
THE TRIP to Tijuana (pronounced Te-ah-wah-na, meaning "Aunt Jane" in Spanish) is made via the Silver Strand road. Leaving the Hotel del Coronado, we pass through Tent City, then along the six-mile peninsula known as the Silver Strand, that connects Coronado with the mainland, passing Imperial Beach on the right and Camp Hearne on the left to Palm City.

After passing through Nestor and San Ysidro we next stop at the U. S. Customs House on the border line of the United States and Mexico. The first stop on the Mexican side may be made to visit the Monte Carlo building, Sunset Inn, and the race track of the Tijuana Jockey Club, one of the finest racing plants on this continent, the mecca for thousands of lovers of the "Sport of Kings." Here may be witnessed the performance of some of the finest horse-flesh in this country, piloted by the cleverest jockeys of this generation. The racing season opens on Thanksgiving Day, and lasts for one hundred and twenty-five days. Next, we cross the Tijuana River to the town of Tijuana. The curio store conducted by the Lower California Commercial Company carries the largest and most exquisite line of merchandise available. Through special arrangements this store is made headquarters for all cars while in Tijuana. Here one may visit the curio store, postoffice building, bull-ring, typical Mexican Fort, Foreign Club, and cafes of various sorts, where one may obtain liquid refreshments of any variety.

The return trip may be made by way of Chula Vista (noted for its Lemon Groves), National City and San Diego, visiting the Chula Vista Country Club and Exposition Park en route if desired.

YOU NEED

Tire Satisfaction



We Guarantee

AJAX TIRES **HOWE**
TUBES

AND

EXPERT TIRE REPAIRS

to Give You That Same

TIRE SATISFACTION

That Has Made Our Slogan

Exceptional Service
EMBLEM & STEVENSON

5th and A Streets

Phone 657-25

Coronado Realty Co.

REAL ESTATE RENTALS AND
INSURANCE

Furnished Homes and Apartments
a Specialty

Office, 1123 Orange Avenue
On Car Line Near Hotel
Telephone Coronado 166-J

W. C. Harland

J. L. Haines

P. F. Parker

ARE YOU A CHIROPRACTIC BACKSLIDER?

YOUR own Chiropractor may not be able to continue with your treatments while you are visiting with us here in San Diego.

You may feel reluctant to lose the benefits of continuous adjustments; and rightly so. Chiropractic treatments to be most effective must of necessity be continuous. To obtain the very best in Chiropractic—for Asthma, Bronchitis, Neuritis, Catarrh, Kidney and Stomach Trouble,—consult Dr. R. Grome, Palmer Graduate, and a man of sound judgment. He will not take your case unless he can help you. Let Dr. Grome remove the cause!

507-508 Scripps Bldg., San Diego.

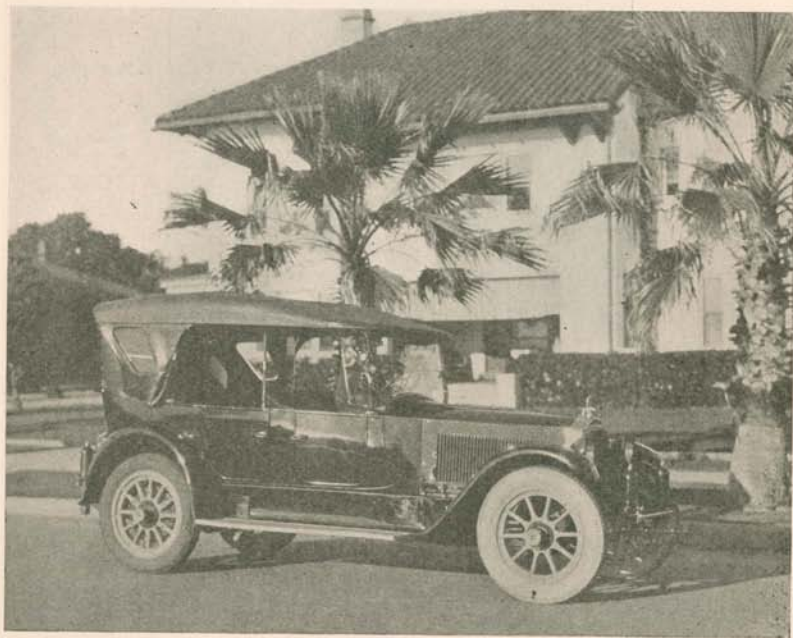
*Consultation and
advice gratis.*

*Hours: 10 to 1
2 to 6
Saturdays 9 to 1*

AUTO TOUR NO. 3

LA JOLLA

ON THIS tour we will cross the Bay to San Diego past the U. S. Grant Hotel and the Plaza, through the business district to the Stadium and High School. The large building to the right as we leave the Stadium is the U. S. Naval Hospital. We drive slowly through the Exposition Grounds, past the Spreckels Organ, across the Cabrillo Canyon Bridge, out through the residential districts of Mission Hills and Inspiration Heights to Old Town. If desired, a stop is made at Ramona's Marriage Place. We now pass the first palm trees planted in California, planted by Padre Junipero Serra. The cross dedicated to his memory may be seen to the right on the hill beyond the Palm. We are now on El Camino Real (The King's Highway), which leads us past the Pacific Beach Military Academy to La Jolla (pronounced La-Hoya, meaning The Jewel or Jewel Gift). Before entering La Jolla we may stop at Windansea, located about two blocks off the main highway, where one can be refreshed by the cooling sea breezes and revel in the glowing sunsets. This beautiful little town is situated on the edge of rugged cliffs at the foot of which are picturesque rocks, caves, and a beautiful beach. On entering La Jolla we pass on the right the Bishop's School for Girls, the Municipal Playground, Woman's Club, Church and the Little Hospital. On the left may be seen the Scripp's Home and Library. Passing through the town of La Jolla, we come to the La Jolla Caves. A tunnel has been built down through the cliffs into the caves, and the visitor may enter them with perfect safety. A courteous guide takes all visitors through and points out the interesting formations. Leaving the caves, we drive around the bath house and bathing cove, then along the cliffs, a very pretty drive through the La Jolla park. The return trip may be made by way of Mission Beach, Ocean Beach and Sunset Cliffs if desired.



You'll Enjoy Yourself at---

PINE HILLS LODGE



Rare Mountain Scenery --- Zestful Mountain Air --- Appetizing Home Product Meals --- Fresh Milk and Cream From Our Own Dairy --- Vegetables in Season --- Home Raised Milk Fed Chicken Dinners Sunday or Upon Appointment

C. WALTER CLEMENT, Manager

Saddle Horses

Swimming

Powerful Radio Installation

GROSSMONT

THIS TOUR is one that takes us through Exposition Park to East San Diego, where we strike the Imperial Valley Highway. We travel over rolling hills to La Mesa, a beautiful little town noted for its balmy atmosphere, one of the prettiest suburbs of San Diego. We start the climb up Grossmont and pass the homes of Owen Wister, Madame Schumann-Heink, and stop at the Grossmont Inn, one of the beauty spots of this world. Mountains and valleys commingled in a wonderful combination of scenic grandeur. Rugged rocks reaching to the very mountain top make the picture complete, and crowning a majestic, crag-like point is Grossmont Inn, 1,004 feet above the sea. One must see this beautiful spot—the buildings in perfect harmony with the setting, the spacious piazzas and pergola, the large living and dining rooms, with their picture windows looking out on a scene imposing and grand. The great fireplace, with comfort everywhere, makes an impression never to be forgotten. This most interesting Inn is thirteen miles east of San Diego. Here you will be served luncheons, afternoon teas and chicken dinners. We pass on to the summit and stop again. The residence on the summit is the property of Madame Carrie Jacobs Bond. The view from the cap rock is well worth the trip. Old Baldy, 168 miles distant, the San Jacinto Range, Palomar Mountain, 6,500 feet high, the Cuyamaca Mountains, and just beyond the beautiful El Cajon Valley lies Mount El Capitan. To the southwest lies San Diego with the blue ocean and bay, the Coronado Islands, and the foothills of Mexico. Mount Soledad and Camp Kearney are seen to the northwest. We go up Grossmont on one road and down another, both one-way roads. The return trip may be made through Eucalyptus Canyon, Spring Valley, Lemon Grove and Imperial Avenue.

Grossmont Inn

Luncheons---Afternoon Teas---Fried Chicken Dinners

Luncheon: 12:30 to 2:00 Tea: 3:00 to 5:00

Dinner: 5:30 to 7:00

For Reservations Phone La Mesa 48-W-12

CLIMATIC CONDITIONS IN SAN DIEGO

Temperature—The normal annual temperature is 61 degrees. The warmest month was August, 1891; mean, 72 degrees. The coldest month was January, 1894; mean, 50 degrees. Temperatures of 90 degrees or over have occurred 61 times in 45 years, or an average of less than twice a year.

Rainfall—The normal annual rainfall in the city is 10.01 inches; in the country 30 inches. Ninety per cent. of the rainfall occurs between November 1 and May 1.

Humidity—The mean annual humidity is 75 per cent. A humidity as low as 4 per cent. has been observed at midday.

The
Anchor
Tijuana
OLD MEXICO

DANCING REAL JAZZ
MUSIC
REFRESHMENTS

Our Policy:

To Serve the Best
To Maintain a Place of
Refinement

Has Made
THE ANCHOR
Hold Fast

Meet Charlie Williams

AUTO TRIP NO. 5

RAMONA

THIS trip is one which affords a great variety of scenery and gives one a good idea of Southern California at its best.

We leave San Diego via East San Diego, keep on eastward to La Mesa and El Cajon, following the paved highway to the foot of Mussey's Grade. Here we enter the mountains and climb over good dirt roads to Ramona at an elevation of 1,440 feet. Ramona is the center of a prosperous cattle and ranching country. A stop may be made at the Kenilworth Inn for an enjoyable luncheon if desired. We turn north, and after a few miles of mesa we turn down the Clevinger Grade, a wide, comfortable travel road with a beautiful view from every turn. At the foot of the grade lies charming San Pasqual Valley, a wonderfully fertile farming country. We keep to the right and after a short winding grade we dip down into Escondido, sometimes called "The Sunkist Vale," or "Hidden Valley." Escondido is a vineyard and fruit country, and is noted for its "Grape Day" celebrations held every year on September 9th. The Vale View Ranch Inn, a resort noted for its excellent table and home-like atmosphere, is situated here.

Leaving Escondido, we pass Lake Hodges and climb the Poway Grade. A wonderful panoramic view is seen from the summit. One-half mile after we reach the pavement we turn to the left down Murphy's Canyon and stop at the Old Mission. (A description of the Mission is given in Tour No. 7.) The return is made by way of Mission Canyon into San Diego to Coronado.

AUTO TOUR No. 6

MISSION GORGE

TOUR No. 7 will take us through San Diego, through some beautiful country over some good roads to the first Mission to be built in California. From the Laurel Street entrance to the Exposition Grounds we go out to East San Diego to La Mesa, past Grossmont into El Cajon Valley, then through to the north and pass through many hundreds of acres of vineyards. Coming to Santee we cross the San Diego and Arizona Railway tracks and start down the San Diego River Canyon. Two miles beyond Santee we stop at the first irrigation project started in California. This dam was built by the Mission Fathers about 1777. Leaving the ruins of the dam we keep on down the canyon until rounding a sharp turn to the left we come to the Mission Gorge. This road, while 500 feet up from the river on the face of the cliff, is safe and smooth. Driving very slowly on down the grade we come to the bridge over the San Diego River. After crossing the river and turning to the right we come to the Mission, San Diego de Alcalá. This is the first Mission in California, built by Father Jaume and Father Tuster in 1774. It is said that the massive timbers used in the construction were carried by the Indians from Smith Mountain, 60 miles away. Some of the original olive trees planted by the Franciscan Fathers are still growing in the valley below the Mission. The Mission lands were broken up and sold about 1846 by Governor Pio Pico of Mexico. Very little of the original tract belongs to the Mission at this date. We may now drive back down the Mission Valley to Old Town or up through Mission Canyon into San Diego and return to Coronado.

---for Rest
and Recreation

The Willows

"The Place of the Good Eats"
ALL-YEAR-ROUND-RESORT
in
San Diego's Back Country Playground

*On the
paved high-
way 32
miles into
San Diego's
mountain
country*

THE WILLOWS is a favorite mountain resort, just an hour and a quarter's pleasant drive from San Diego, through a beautiful country of valleys, orchards and foothills.

Detached bungalows with or without bath for sleeping accommodations.

The adobe house "Casa de Terra" the general gathering place for guests, is supplied with magazines and a good library. The pleasant dining room and the home-like atmosphere of the place as a whole make up the unique resort of the Willows. Open to guests any time of the year.

Just the place to find quiet, rest and homy comfort. Our home-cooked meals are supervised by one of our own family. Our own dairy, orchard, garden and poultry plant enable us to set a table supplied with an abundance of good things that go to make up a satisfactory meal.

*A Unique
Nine-hole
Golf
Putting
Course---
Bring
Your
Putter*

The WILLOWS

B. M. Walker, Proprietor
ALPINE CALIFORNIA
Telephone, El Cajon 211-2 Bells

TOUR OF THE MISSIONS

LEAVING Coronado via the Ferry we cross the San Diego Bay to San Diego. Our first stop may be made at Ramona's Marriage Place, old San Diego, the site of the first Mission in California. The proprietor of Ramona's Marriage Place, Mr. Getz, is one of the best authorities living today on the history of the California Missions, and with appropriate stage settings gives daily lectures upon California and the early Missions. Leaving Old San Diego we follow the State Highway to La Jolla (pronounced La Ho-ya). Located on the beach two blocks off the paved boulevard about one mile south of the business center of La Jolla is Windansea, delightfully situated on a sandstone cliff overlooking the ocean. Here one finds a charming home atmosphere and food so good that each meal is an event. A short distance beyond La Jolla, indicated by an appropriate sign, a road branches off to the left leading to an attractive little resort known as "Spindrift," where afternoon tea, chicken and fish dinners are served in a cozy dining room above the breakers. About a mile from here we pass the Biological Station of the University of Southern California, visitors admitted free. Our next stop may be for a few moments to view the "Torrey Pines," the only pine of its kind growing on this continent. After descending the Torrey Pines Grade and ascending another slight grade, we soon come to "Del Mar." Here is located the "Stratford Inn," a modern hotel architecturally, unsurpassed in its suitability for the location. It is like the home of the wealthy for convenience; like the home of the artist for beauty and comfort; like the home of the American for simplicity. Stratford Inn is conducted on the American plan, with cuisine that features a small variety, especially well prepared. From Del Mar the road passes "George's Place." A trip to California is not complete without a visit to George's Place for a steak or lobster dinner. Next we pass the "Twin Inns" at Carlsbad, a place noted for real chicken dinners, home cooked and tastefully served. A little over two miles and we come to Oceanside and leave the Los Angeles Highway. Just a few miles east of Oceanside is located the beautiful and historic Mission of San Luis Rey, which was dedicated on June 13, 1798. This was one of the largest and most beautiful of all the Missions erected in California, and is in a fair state of preservation. From here we drive to Bonsall, then to the Pala Indian Reservation and Mission. The Pala Mission was destroyed by flood waters in 1916, but was rebuilt by volunteer labor of the Pala Indians, who worship here. Leaving the Mission we drive on up the San Luis Rey Valley with Palomar Mountain looking down from its 5,500 feet. Next we ford the San Luis Rey River and climb up a mesa into Valley Center. A turn to the right, and a long, gradual grade takes us into the Hidden Valley, Escondido. Hundreds of acres of grape vines are to be seen here. From Escondido we drive over the Poway Grade and through the Murphy Canyon to the San Diego Mission and home. A description of the San Diego Mission will be found in Tour No. 7.

SAN DIEGO CLIMATIC CONDITIONS

Weather—Days with an hour or more of fog occur on an average of twenty-two times a year, being most frequent in October and least frequent in May. San Diego has less fog than any other city on the Pacific Coast. The sun shines on an average of 356 days a year in San Diego. The average difference between the mean temperature of one day and that of the next is 2 degrees. The average summer temperature is 68, the average winter temperature is 60, a mean variation of but 8 degrees summer and winter.

San Diego uses the shortest thermometer in the world.

The Coronado Sweet Shop

C. F. Sawyer, Prop.

Page and Shaw's
and Whitman's **CANDIES**

Breakfast---Light Lunches
Unexcelled Fountain Service

1122 Orange Avenue

Phone Coronado 138

This Book, like many other
creditable works of printing
has been produced by ~

THE
Arts & Crafts Press
PRINTERS OF QUALITY

Located at
First and F Streets
San Diego, Calif.

Telephone
Main 3416

CAMPO

IN MAKING Tour No. 8 we go out past the Cemeteries thru Encanto and Lemon Grove to the La Mesa-Spring Valley Junction where we turn to the right thru Jamacha across the Sweetwater Bridge, up several short grades to Dulzura. Dulzura was the scene of a gold rush several years ago but the mines never produced anything but excitement. Leaving Dulzura we climb to the top of the Cottonwood grade, drop down to the foot of Potrero Grade and start the five mile drive up the gravel road. Reaching the Summit we pass thru Potrero to Campo. After leaving Campo we turn to the left or North, and stop for a moment's rest at Buckman's Springs where we may refresh the inner man with Lithia Water direct from the Springs. We will now start on up the grade leading into Descanso, as we are now on the Imperial Valley State Highway and the road is wide and well surfaced.

Passing one mile North of Descanso we drop slowly down the Viejas Grade to "The Willows," a mountain resort famed for its cuisine. If it is desired a stop may be made here. Passing on down the paved highway we glide thru Alpine, Flynn Springs, Bostonia, El Cajon and La Mesa, returning via East San Diego and Balboa Park.

This tour is one that is difficult to describe. The following is merely an outline. It is a beautiful trip and we heartily recommend it. The drive down the Cottonwood Grade and up the Potrero Grade is well worth the trip.

AUTO TOUR NO. 8

PINE HILLS

TOUR No. 9 is a trip that takes us from sea level to the fertile valleys and foot-hills in the near back country, to the high altitudes of the pine-clad Cuyamacas. Wonder views of the Imperial Valley and Salton Sea to the east vie with charming vistas of the distant bay and ocean to the west. We travel the smooth concrete highway past Grossmont, with its artists' colony, through the vineyards of El Cajon, up winding grades into Alpine. Ye Alpine Tavern is located here, a resort noted for its genial hospitality and excellent table. Next we come to the Willows, an all-year-round resort at an elevation of 2,200 feet, set among the live oaks and willows at the foot of Viejas Mountain. The Willows is not a hotel, but an enlargement of a private home, and the cooking is strictly home-cooking, being supervised by one of the family. A very good disintegrated granite road takes us up Viejas Grade to Descanso and Hulburd Grove, where delicious luncheons and dinners are served. Here we leave the Imperial Valley Highway and swing to the left. The road from this point takes us through the most beautiful country yet encountered. We travel through thickly wooded country, past beautiful streams, shady nooks, and after reaching an altitude of close to 5,000 feet, come to the beautiful Cuyamaca Lake. We pass on around the lake and leave the pines for a time. Oaks, manzanita and sage line the roadway now. We make a short stop at the top of the grade leading into Julian and view the Salton Sea and Imperial Valley. Julian, a typical mining town, is passed next, and after dropping down a one-mile grade we swing to the left and on into Pine Hills, where a stop may be made for luncheon. Pine Hills is a spot that will long be remembered and is well worth inspection. The food served is provided by the ranch in connection with the Lodge, and is one of the ideal places to spend a fortnight. A special feature of entertainment for the Guest of the Lodge is a powerful Radio, capable of reaching Pittsburg. There are many views and beautiful drives around the hills and through the valleys. Leaving Pine Hills, we rapidly drop down through Wynola, Santa Ysabel, Witch Creek, Ramona, Escondido and on to San Diego and Coronado.

Chicken, Home Fed Lobster in Season Planked Steaks
Lunches Dinners Afternoon Tea

Spindrift by the Sea



AN IDEAL BEACH RESORT HOSTELRY

We Cater to Special Parties

Scotch Short Bread, Muffins and Sally Lunns

North End of La Jolla Phone Reservations La Jolla 131-W-11

Don't Fail to Visit---

Marsh's Japanese Garden

---One of Coronado's Points of Interest

Recognized as the most typical Japanese Garden in America with few equal to it even in Japan.

Adjacent to Hotel del Coronado
and Mr. Spreckels' Residence

A charge of twenty-five cents covers admission fee and service of tea and cake.

A BRANCH OF G. T. MARSH AND CO., leading San Francisco importers of Chinese and Japanese Art will be found on the main floor of the Hotel del Coronado. Prices the same as at their main store.

WARNER'S HOT SPRINGS

LEAVING Coronado we pass thru San Diego, Exposition Park, La Mesa, El Cajon and Descanso to Cuyamaca Lake, then to Julian where we pass down a steep grade to Banner and the San Felipe Valley. The San Felipe Valley is situated directly on the edge of the desert, surrounded by sun blasted mountains and rocky hills with sage, cacti and yucca growing sparsely in the sand. It is a typical desert scene. The road winds thru the valley avoiding here a dry sandwash and there a clump of giant cactus. We gradually climb out of the valley over the Old Butterfield Stage Route to Warner's Hot Springs ranch. Warner's was once a stage station on the longest stage line in the world, the Butterfield line that ran from St. Louis to San Francisco, just before the Civil War. Warner's is noted for its Hot Sulphur Springs. A number of cottages are for rent and the mud baths and sulphur water are said to be very beneficial. After stopping here for lunch or spending the night, we drive over the Santa Ysabel road to Mesa Grande Junction, turn sharp to the right and climb the East Mesa Grande Grade up into the rolling hills and oak dotted fields of Mesa Grande to Powam Lodge at an elevation of 3350 feet. Edward H. Davis, one of the greatest living authorities on the Indians of the Southwest is owner of Powam Lodge. Leaving the Lodge we pass the Mesa Grande Indian Reservation and drop down a short grade to Lake Henshaw Dam. One of the gigantic water projects of California. After passing the Dam proper we enter the beautiful San Luis Rey Gorge and pass thru many miles of beautiful scenery. On the right lies Palomar Mountain. To the left a beautiful stream, and across the valley the hills that surround the Sun-kist Vale (Escondido). We may either turn to the left and return to Coronado via Rincon, Valley Center and Escondido, or continue to the Ocean via Pala Indian Reservation and Mission, Bonsall, San Luis Rey Mission to Oceanside, then along the Los Angeles Highway thru Del Mar, La Jolla and San Diego to Coronado.



Coronado Saddle Stables

Horses for Rent or Sale

Telephone, Coronado 18-W



Near Hotel Del Coronado

- Riding Lessons
- Escort
- Experienced Instructor
- Lady Escort

Nine Miles of Beach at Low Tide
Six Miles of Bridle Paths

CORONADO

CORONADO, (Crown), a high class residential city between Bay and Ocean, with a world famous hotel, exquisite residences and gardens. The Marsh Japanese Tea Garden, a perfect example of Oriental Miniature landscaping, with its tiny lawns, toy bridges and dwarf trees, some of which, hundreds of years old, measure their height in inches, occupies the block adjoining the residence of Mr. John D. Spreckels. These gardens are owned by G. T. Marsh and Co., Oriental Art Collectors, located on the ground floor of the Hotel Del Coronado.

The streets of Coronado may better be called boulevards, being of great width and every street paved. The Ocean Boulevard, extending west from the Hotel adjacent to the ocean, whose surf pounds upon the great stone breakwater, is lined with magnificent residences. Then on the eastern side, running around the shore line of the bay is the beautiful driveway known as Glorietta Boulevard. On the western edge of Coronado, the Hotel del Coronado maintains an eighteen hole golf course, the Coronado Country Club, where golf tournaments and tennis tournaments bring together a galaxy of stars from every section of the country. Then, too, there is the famous Polo Field, or rather fields, for there are three fields maintained by the Hotel. The most noted polo players of the United States and Canada may be seen in action here during the Winter and Spring Season, when the annual Polo Tournament is held, this being the height of the social season, when the Casino and Ball Room of the Hotel are the scenes of many noted and fashionable gatherings.

During the summer season Coronado Tent City, a unique village of more than 800 tents, bungalows and cottages, palm covered, situated near Hotel del Coronado, on the narrow peninsula between the bay and ocean, is crowded with summer vacationists from the warmer sections of the interior. This is a real city, with improved streets, water, gas, electric and sewer systems, street cars and complete equipment for guests who wish to do housekeeping. There are stores and shops of many kinds, and an immense band pavilion where free concerts are given twice daily. Such sports as swimming in the bay, surf bathing in the ocean, yachting and fishing, make this a most delightful place to spend one's vacation. The Coronado Saddle Stables operated in connection with the Hotel maintain a string of first class Saddle Horses. Competent instructors, and capable escorts. Connecting Coronado with the mainland, is a long narrow peninsula, "The Silver Strand," running in a southeasterly direction from the Hotel, by which one may motor to Tia Juana or San Diego.

CALIFORNIA FRUITS IN SEASON

- | | |
|--|----------------------------------|
| Apples—June to January | Lemons—Every month in the year. |
| Apricots—April to October. | Loganberries—April to September. |
| Avocado—August to April. | Loquats—March to May. |
| Blackberries—April to September. | Nectarines—July to October. |
| Cherries—May to July. | Olives—October to January. |
| Currants—May to August. | Oranges—December to November. |
| Dewberries—May to July. | Peaches—May to October. |
| Figs—Three crops, July to December | Pears—July to December. |
| Grapes—June to November. | Plums—June to September. |
| Grape Fruit—December to November. | Pomegranates—August to January. |
| Guavas—Two crops, March to July;
September to December. | Prunes—July to November. |
| | Strawberries—March to Christmas. |

Coronado Cleaning and Dye Works



Caterers to high grade
Dyeing, Cleaning and
Pressing of ladie's and
gentlemen's garments
of all kinds.

The brown auto will call if
you will telephone
Coronado 125

ROBERT RIED, Prop.

965 Orange Ave.

“ A PRESS IN TIME SAVES SHINE ”

Japanese Tea Pavilion BALBOA PARK



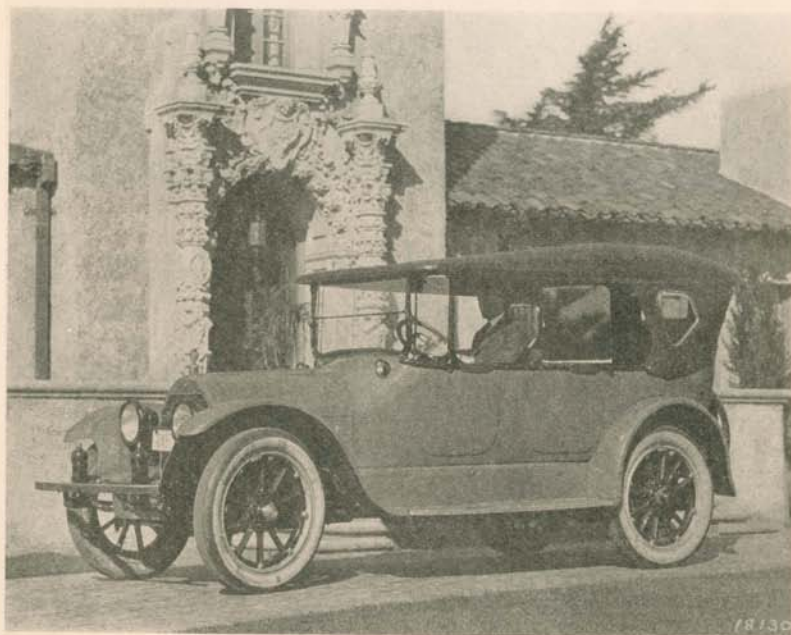
Built in a typical Japanese garden, making a very picture of the Orient.
Tea and light lunches served by Japanese lady attendants in native
costumes.

OPEN ALL THE YEAR ROUND

INTERESTING MOTOR TRIPS

LEAVING Coronado we pass thru San Diego, La Jolla, Del Mar, San Juan Capistrano, Santa Ana, Anaheim, Fullerton and Whittier to Los Angeles, a city of 500,000 population called the wonder city of the world. Here a stop may be made for a day or two to visit Pasadena, Hollywood, the Beaches, Riverside, Redlands and make a tour of the city. Leaving Los Angeles we drive over One Hundred miles of beautiful paved road to Santa Barbara, viewing enroute Oil Derricks in the Ocean, where oil is being pumped from below the tide line. Other beautiful sights on the route are Montecito and Miramar, renowned for their matchless scenery and magnificent residences, including rose-covered bungalows, imposing homes and vast country estates. Here may be seen the winter homes of Armour, Bliss, Billings, Miller Graham Knapp, Edward Gould and the Gillespie Italian Gardens. The Hotels of Santa Barbara, are the Arlington, Samarkand, El Encanto and El Mirasol.

From Santa Barbara the road leads us thru the Gaviota Pass to Santa Maria, a distance of 79 miles. Here a stop may be made for luncheon or for over night at the Santa Maria Inn:—A delightful little Inn with a reputation for good food. From Santa Maria the road passes thru San Luis Obispo to Pasa Robles, a Hot Springs resort a distance of 60 miles from Santa Maria. The next stopping place with good accomodations is the Alpine Tavern at Salinas, 80 miles from Pasa Robles or Del Monte 120 miles from Pasa Robles. From Salinas there are two roads to San Francisco. One via San Jose and the other via Del Monte. The latter being the best and most interesting. It passes thru Del Monte and over the famous seventeen mile drive to Santa Cruz. Then over the new Santa Cruz mountain road, thru the Big Trees to Palo Alto, Redwood, San Mateo, Colima and San Francisco. The return trip may be made over the Inland route via Modesta, Merced, Fresno, Bakersfield, Los Angeles, Riverside and San Diego.



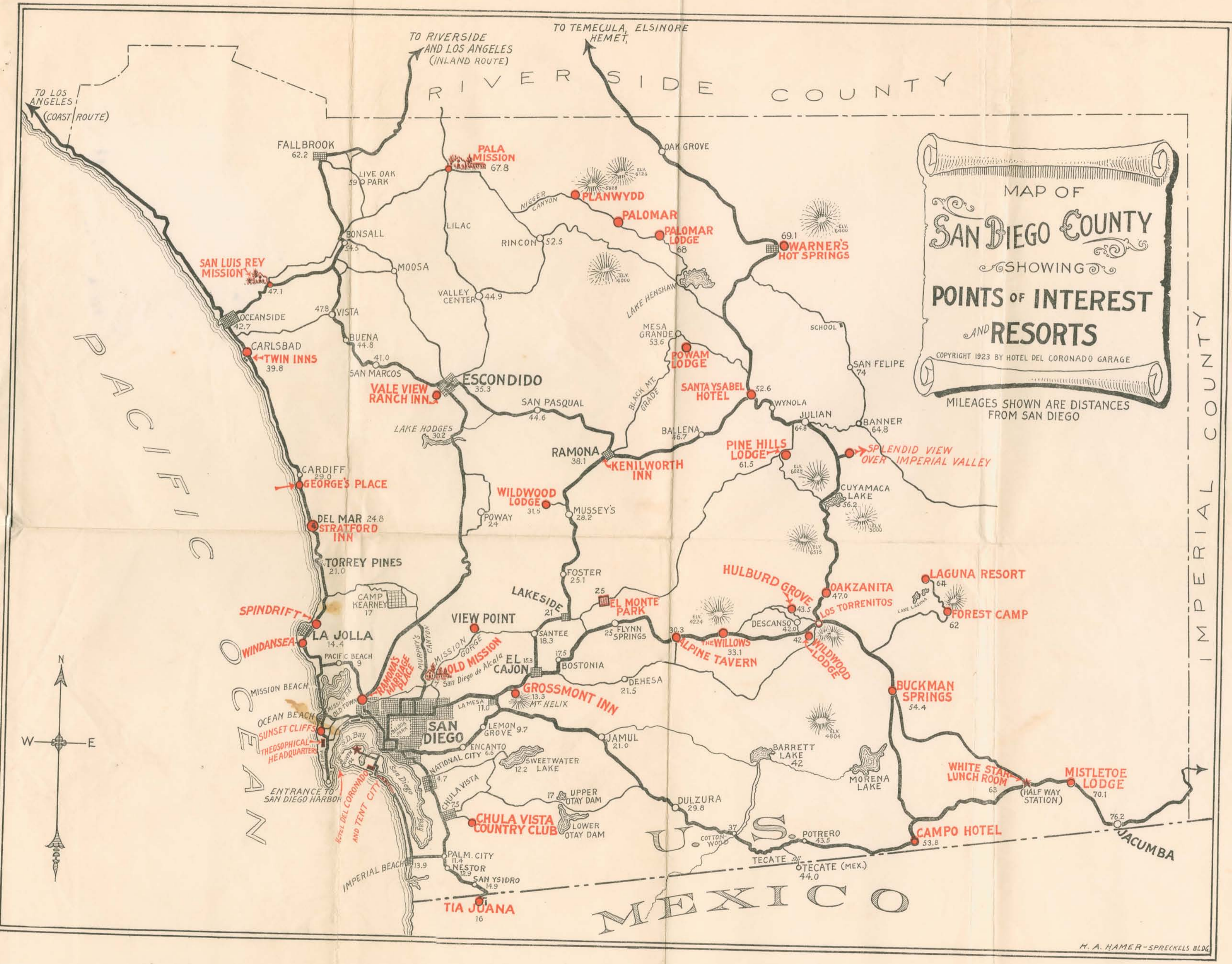


Greater San Diego's Greatest Department Store

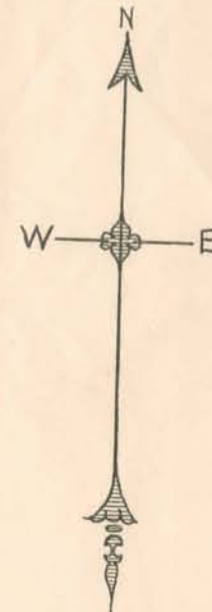
This is San Diego's most convenient store, located at Fifth and Broadway and reached by every street car in the city. Nothing but **DEPENDABLE** merchandise is ever offered by this store, and everything is moderately priced.

Holzwarren Inc.
Broadway
at Fifth

SAN DIEGO, CALIFORNIA.



MAP OF
SAN DIEGO COUNTY
 SHOWING
POINTS OF INTEREST
 AND
RESORTS
 COPYRIGHT 1923 BY HOTEL DEL CORONADO GARAGE
 MILEAGES SHOWN ARE DISTANCES FROM SAN DIEGO



U.S.
MEXICO