



Pine Hills etc.















a





























24











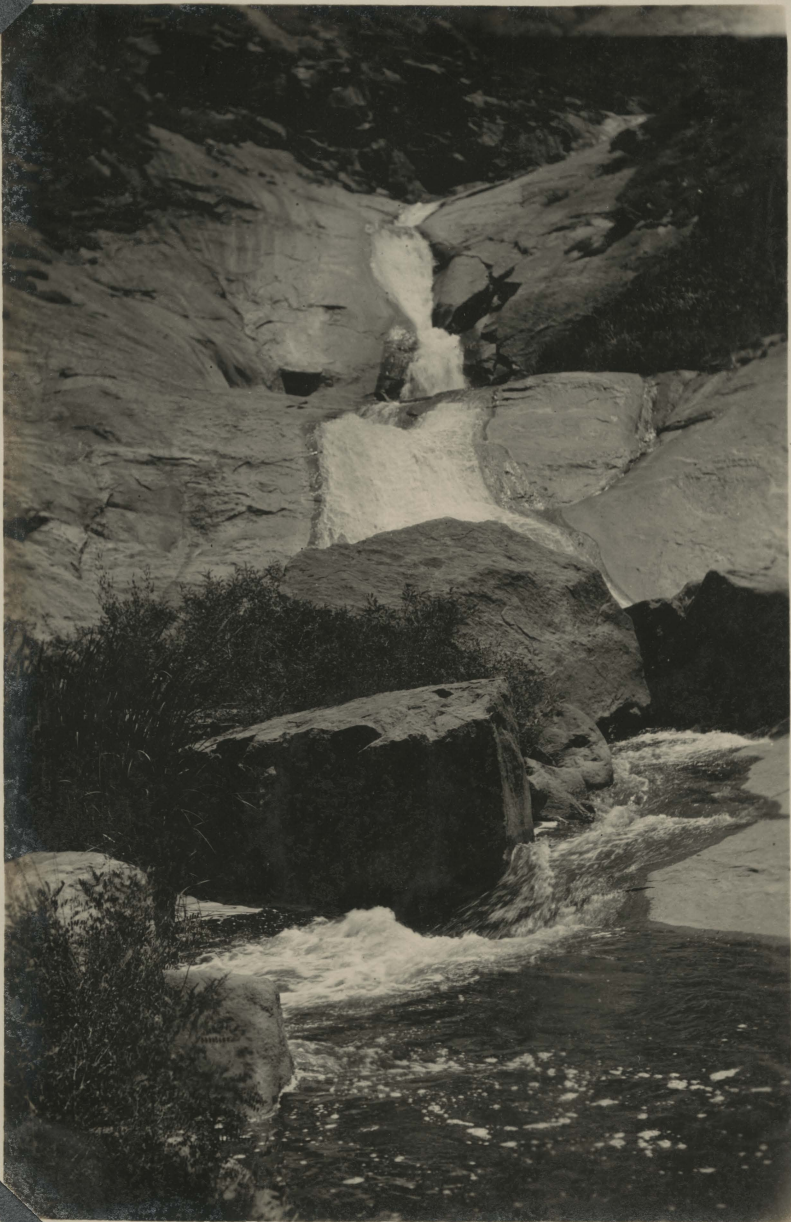






33







- #2 Drowning dam. lower side
- 3 " " upper "
- 4 Pine Hills looking N.E.
- 5 " "
- 6 " " " W.
- 7 " "
- 8 " " " toward Cuyamaca
- 9 " " " W. El Cajon cut in distance
- 10 " " " to Cuyamaca
- 11 " "
- 12 " "
- 13 " " Headwaters of ~~San~~ <sup>Cuyamaca</sup> Creek
- 14 " " Cedar <sup>creek</sup> ranch school in mid. distance
- 15 " "
- 16 Foot middle peak below Cuyamaca dam <sup>July 12</sup>
- 17 On Middle peak Cuyamaca <sup>from breaks</sup>
- 18 Cuyamaca Lake Sunrise. July 13
- 20 " " " " " "
- 21 From trail north side North peak
- 22 K Schmidt place foot " "
- 23 Trail N side N peak.
- 24 Looking west " " <sup>from breaks foreground</sup>
- 25 Cuyamaca Lake from high peak <sup>July 14</sup>
- 26 Looking north over Pine Hills & Julian  
Country from platform on high peak cloudy.
- 28 Campbell camp top high peak one of <sup>US</sup> Coast
- 29 Modetic surveyors making observations from Cuyamaca  
On high peak
- 30 Cuyamaca Lake Sunset July 14-1910 <sup>Rained</sup>
- 31 Alder trees & Boulder Cr at mouth of Gales Cr July 15
- 32 " " " " " " <sup>No 2</sup>
- 33 ~~Drills~~ children 10 mi below dam  
over

- 35 Upper part falls Boulder cr  
10 mi. below dam
- 36 Lower part fall same above
- 38 Fossils same as above  
taken from top of El Cagone but  
looking toward Cuyamaca.