

T.S.R.I.E. bk #4 p 34-37

J. N. Moore

S.C.L.Co. Lands in Palomar Mt.

W From SE Cor Sec 33 (Continued)

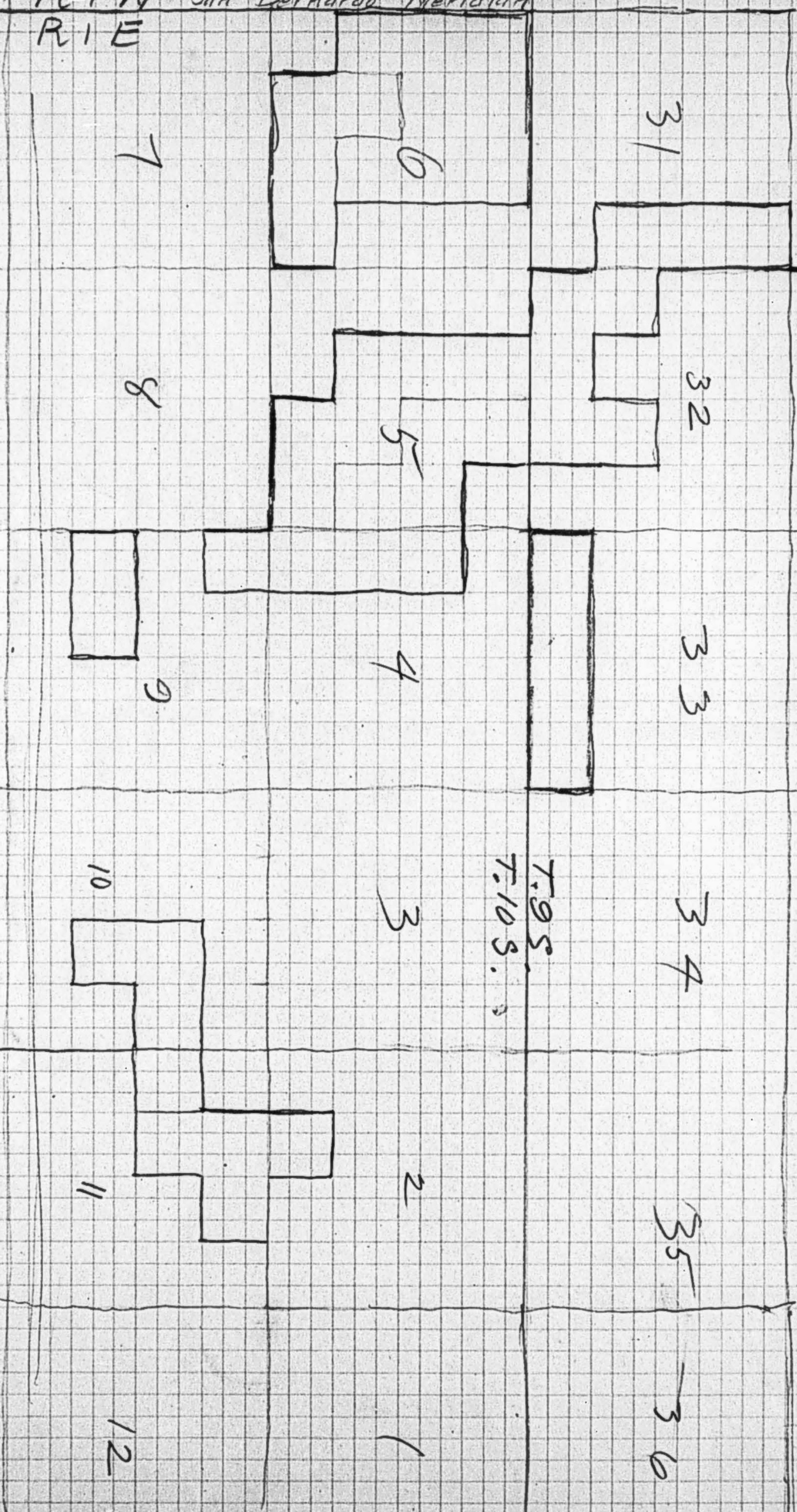
Sta	Bear	Dist	Lat Diff		Long Diff		Co-ordinates				
			N	S	E	W	N	S	E	W	
79+66.7								132.8			7490.1
82+61.9	N 76° 45' W	295.2	67.7			287.9		111.9			7376.8
85+10.7	S 31° 03' W	248.8		213.2		128.3		200.5			7778.6
86+31.7	S 63° 15' W	121.0		54.6		108.0		182.6			7639.7
87+39.1	S 89° 47' W	107.4		0.4		107.4			12.1	30.6	7906.9
88+53.5	S 89° 56' W	116.4		0.1		116.4					7703.0
89+80.9	S 89° 15' W	125.4		1.6		125.4					8014.9
92+66.4	N 89° 39' W	285.5	1.7			285.5			67.3	85.2	7871.0
96+49.8	S 88° 13' W	383.4		11.9		383.2			67.1	85.6	8123.3
98+25.3	N 81° 16' W	175.5	26.6			173.9			67.8	85.7	7978.4
100+70.0	S 82° 28' W	244.7		32.1		242.5			67.8	85.7	8238.7
101+79.7	N 88° 08' W	109.7	3.6			109.4			69.8	87.3	8094.8
103+03.4	N 85° 50' W	123.7	9.0			123.4			67.1	85.6	8364.1
106+34.9	S 89° 43' W	331.5		1.6		331.5					8220.2
110+71.6	N 89° 52' W	436.7	1.0			436.7					8649.6
111+30.5	N 89° 18' W	58.9	0.7			58.9					8505.7
= SW. Cor. Sec 32											
113+20.5	S 45° 04' W	190.		134.2		134.5			79.6	97.5	9032.8
114+25.9	N 85° 36' W	105.4	8.1			105.1			53.0	70.9	8888.9
116+21.9	S 88° 53' W	196		3.8		196.0					9206.2
116+85.1	S 74° 46' W	63.2		16.6		61.0			85.1	103.0	9448.7
119+00.3	S 75° 00' W	215.2		55.7		207.9					9309.8
120+30.5	S 66° 21' W	190.2		76.3		174.2			81.5	99.4	9558.1
122+21.3	S 76° 26' W	130.8		30.7		127.1			12.5	90.4	9919.2
123+29.3	S 45° 41' W	108.		75.4		77.3					9681.5
124+56.2	S 88° 29' W	126.9		3.4		126.9					9557.6
127+55.9	N 80° 37' W	299.7	48.9			296.0			19.1	92.0	10013.0
128+49.6	N 61° 58' W	93.7	44.0			82.7					9869.1
129+54.2	N 66° 05' W	104.6	42.4			95.6					10499.7
131+52.0	N 68° 00' W	197.8	74.1			183.4					10305.8
133+85.4	N 69° 30' W	233.4	81.7			218.6					10508.6
			299.2	346.1					12.9	90.3	10364.7
			409.5	711.6		5109.2					

4505.8
 435.2
 4941.0
 4797.1
 193.9

5280.
 3
 15890

R1W San Bernardo Meridian

R1E



31

32

33

34

35

36

6

5

4

3

2

1

7

8

9

10

11

12

T: 9.5
T: 10.5

$13 \frac{1}{10}$
 $5 \frac{1}{4}$

$39 \frac{3}{4}$

$26 \frac{1}{12}$
 $10 \frac{1}{12}$
 $36 \frac{1}{12}$

$1 \frac{1}{2}$
 $3 \frac{1}{2}$
 5
 $8 \frac{1}{2}$
 10

55	899	763	3187	89.3
1156	1840	387	2558	1202
1865	1898	1020	1941	1484
1666	1154	709	806	2039
1419	1425	775	1339	1503
5654	689	1108	784	2631
1979	877	1384	1413	550
2030	543	1141	2792	4550
1577	291	1646	2219	3451
813	3037	1370	885	136
843	1372	3750	946	1843.9
<u>1405.7</u>	<u>1402.5</u>	<u>1407.3</u>	<u>1887.0</u>	<u>142</u>
655	75	554	656	

2960.0
3741.8
10838
3639.0

14025			1843.9
3308.2	4715.5		37309
1407.3	1887.0		
4715.5	<u>66025</u>		
3730.9			
<u>8446.9</u>			

1509.8
1893.2
1320.6

55		1905.7
1086		1853.8
1720	5335.1	<u>51.9</u>
1666	1853.8	
1419	<u>3481.3</u>	
5350		
1949		
2030		
1577		
813		
843		
<u>1853.8</u>		
554		

T.O.S. R.I.E.
Palomar Mt. Surveys
J.M.M.

p 17 - N. From S.W. Cor Tshp 10 S R 2 E to N.W. Cor Sec 31.

Sta	Bear	Dist.	Lat Diff.		Long Diff.		Coordinates				
			N	S	E	W	N	S	E	W	
0+00	see p 8 = Tshp. Cor.	—	—	—	—	—	—	80.1	—	—	5327.8
28+19.1	N 0°24' W	2819.1	—	—	—	—	—	—	—	—	5347.4
29+4.1	N 6°09' E	90.0	2819.0	—	—	—	119.6	2899.1	—	—	5337.8
50+44.1	N 10°15' W	2140.0	89.5	—	—	9.6	—	2983.6	—	—	5347.1
51+39.1	N 3°21' E	95.	2140.0	—	—	—	—	5123.6	—	—	5341.5
52+43.9	N 3°29' E	104.8	94.8	—	—	5.6	—	5218.4	—	—	5335.1
			104.6	—	—	6.4	—	5323.0	—	—	

p 18. Traverse From 22+38.6 p 17 to SW. Cor. NE⁴SW⁴ Sec 31

0+00 = 22+38.6	Ref. PT. S 55°14' E	(987.4)	2238.6	—	—	—	—	15.6	2318.7	—	5343.4
									994.2		1365.9
16+62.8	= SW. Cor.	1662.8	—	948.2	1365.9	—	—	—	1370.5	—	3977.5

p 18 From 22+38.6 p 17 to N.W. Cor. SE⁴NW⁴ Sec 31

0+00 = 22+38.6	N 50°40' E	2641.2	2238.6	—	—	—	—	15.6	2318.7	—	5343.4
									1673.8		2143.1
26+41.2			1673.8	—	2043.1	—	—	—	3992.5	—	3300.3

p 19 From 20+62.7 p 13 to N.E. Cor SW⁴ Sec 32.

0+00 = 20+62.7	N 34°51' E	98.1	—	—	—	—	—	—	1100.3	—	1501.7
8+98.1	N 28°10' E	398.2	80.5	—	56.1	—	—	—	1180.8	—	1557.8
4+96.3	N 33°19' E	214.7	351.0	—	188.0	—	—	—	1531.8	—	1745.8
7+11.0	N 49°50' E	221.2	179.4	—	117.9	—	—	—	1711.2	—	1863.7
9+32.2	N 51°58' E	190.8	142.7	—	169.0	—	—	—	1853.9	—	2032.7
11+23.0	N 54°47' E	429.2	117.6	—	150.3	—	—	—	1971.5	—	2183.0
15+47.2	N 12°11' E	341.7	244.6	—	346.6	—	—	—	2216.1	—	2529.6
18+88.9	N 62°38' E	38.0	334.0	—	72.1	—	—	—	2550.1	—	2601.7
19+26.9	= N.E. Cor. SW ⁴ Sec 32		17.5	—	33.7	—	—	—	2567.6	—	2635.4

p 21 From 24+05.3 p 13 to S.E. & S.W. Cors SW⁴NE⁴ Sec 31

0+00 = 24+05.3	S 86°49' W	300	2405.0	—	—	—	—	—	36.7	2405.0	—	35.7	
3+00	S 81°52' W	385	—	16.7	—	—	—	—	299.5	2384.3	—	263.8	
6+85	N 63°28' W	206.2	—	54.5	—	—	—	—	381.1	2383.8	—	644.9	
8+91.2	N 52°58' W	489.1	92.1	—	—	—	—	—	184.5	2425.9	—	829.4	
13+80.3	(S 49°40' W) (190.9)		294.6	—	—	—	—	—	390.4	2720.5	—	1219.8	
side shot to Cir. = SE Cor. SW ⁴ NE ⁴ Sec 31	(S 91°15' W) (137.6)		—	—	—	—	—	—	(90.9)	(107.0)	2629.6	—	1326.8
side shot to old stake	N 50°43' W	351.2	—	—	—	—	—	—	(90.7)	2617.0	—	1310.5	
17+31.5	N 55°42' W	619.0	182.4	—	—	—	—	—	300.1	2962.9	—	1519.9	
23+50.5	S 44°14' W	865.0	348.8	—	—	—	—	—	511.4	3251.7	—	2031.3	
32+15.5	= SW Cor SW ⁴ NE ⁴ Sec 31		619.8	—	—	—	—	—	603.4	2631.9	—	2634.7	

T. 10. S. R. 2. E.

p 22 From 27+17.5 p 9 To { S.E. Cor. N.E. S.W. Sec 31.
S.W. Cor. N.E. S.E. Sec 31.

Sta	Bear	Dist.	Lat. Diff		Long Diff.		Coordinates				
			N	S	E	W	N	S	E	W	
0+00 = 27+17.5 p 9								40.2	—	—	2630.7
	N 0° 05' W	1315.3		—	—	—	—	1315.3			
13+15.3 = S.E. Cor. N.E. S.W. Sec 31			1315.3	—	—	1.9		1355.5	—	—	2632.6

0+00 = 1315.3								1355.5	—	—	2632.6
	N 89° 56' E	1315.5		—	—	—	—	1315.5			
13+15.5 = S.W. Cor. N.E. S.E. Sec 31			1.5	—	1315.5	—		1357.0	—	—	1317.1

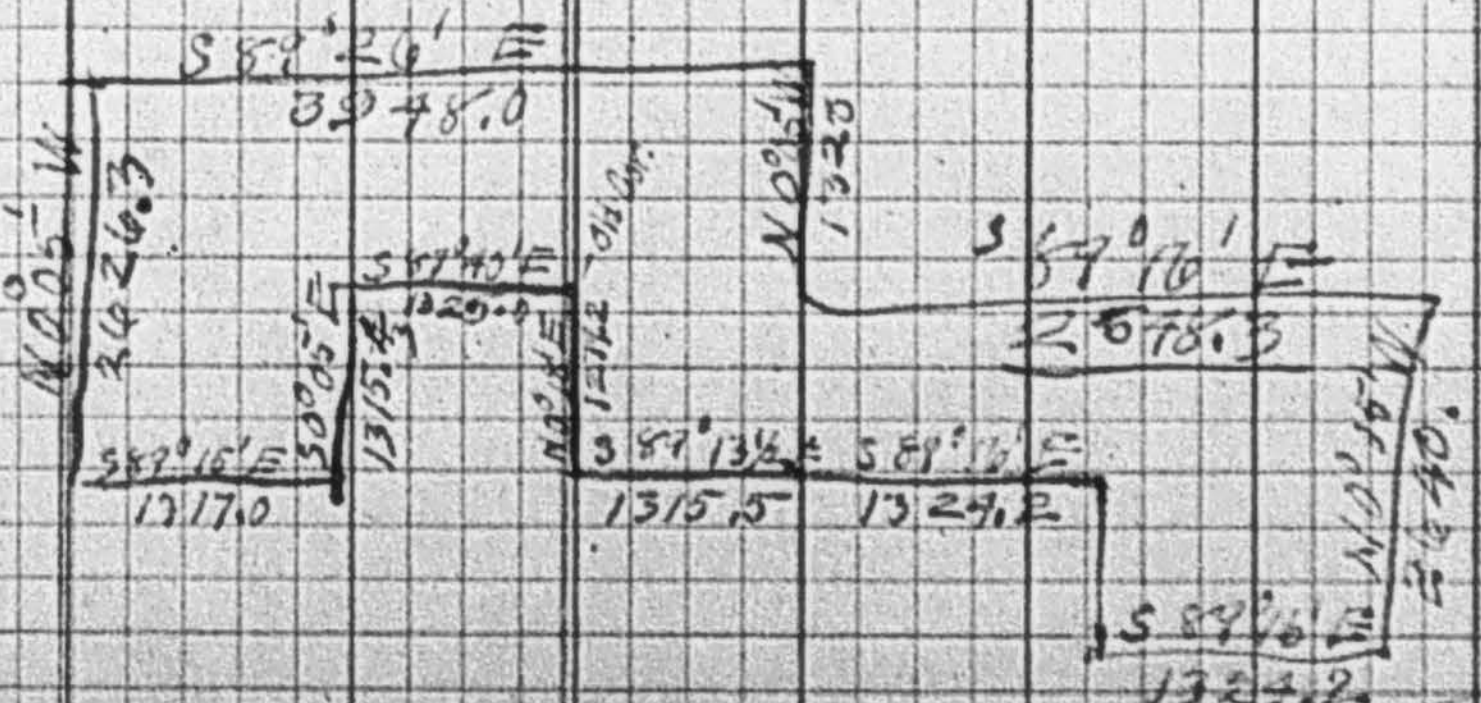
p 20 Corrections for { N.E. Cor. S.W. Sec 31
N.E. Cor. S.E. N.E. Sec 31

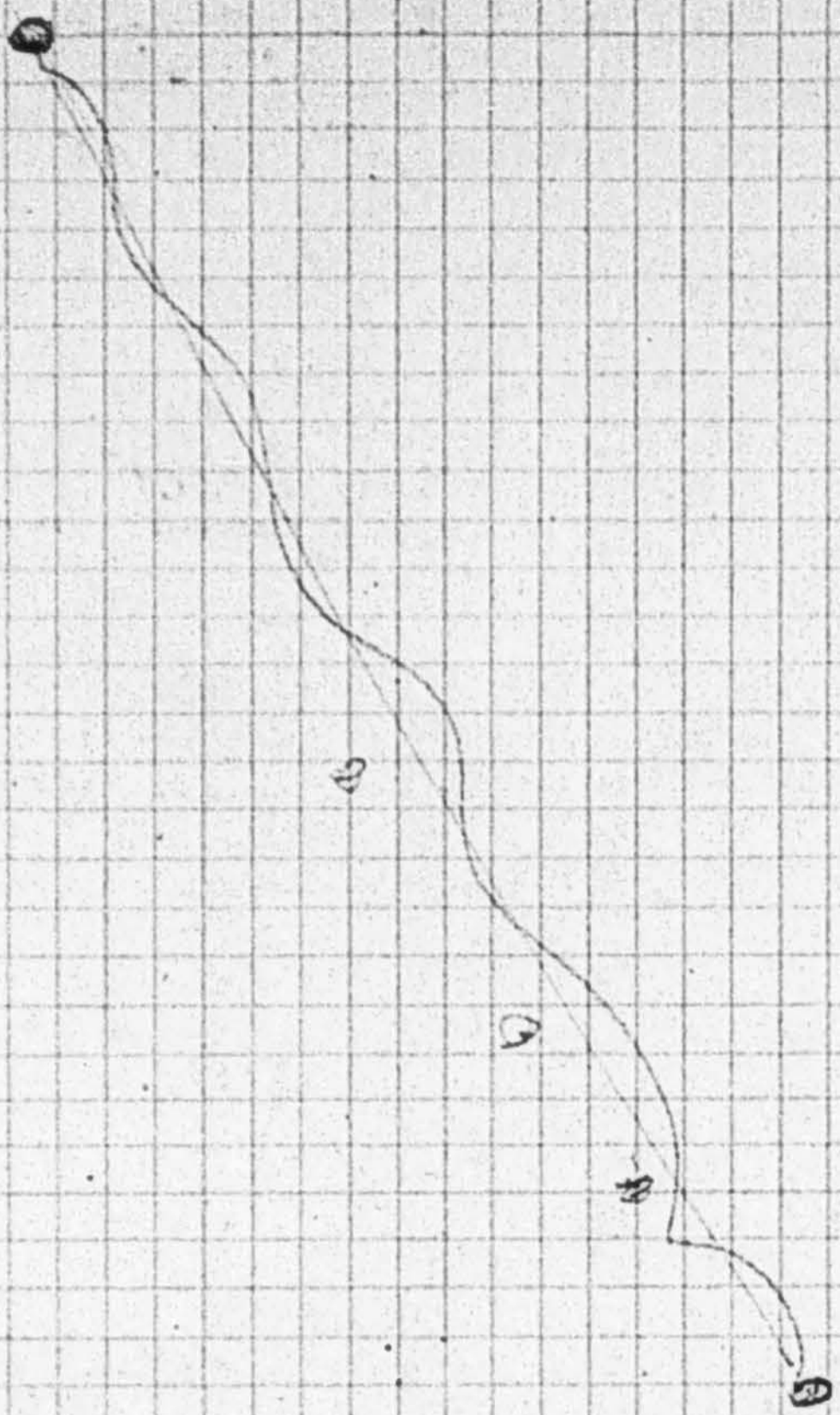
0+00 = 26+40 sec 31								2639.7	—	39.3	—
	N 89° 17' W	43'	0.5			43.0					
0+43						37.3		2640.2			3.7
0+00 = 39+60 sec 31								3959.6	—	58.9	—
	N 89° 17' W	64.5	0.8			64.5					
0+64.5						52.9		3960.4	—	5.6	—

Boundary Traverse of Prop.

			N	S	E	W
2626.1	N 0° 05' W	2626.1	X			
1320.0	S 0° 05' E	1320.0	X			
3946.1	S 0° 05' E	2640.0	X			
5275.4	N 0° 05' W	1320.0	X			
1329.3	S 0° 05' E	1315.4	X			
1320	S 0° 05' E	1329.3			1329.3	1.19
1315.4	S 0° 05' E					
2640	S 89° 26' E	3948.0	X		39.1	3947.8
5275.4	S 89° 16' E	2648.3	X			
1317	N 89° 16' W	2648.3	X			0.2
2638	N 89° 13 1/2' W	1315.5	X	17.80		1315.4
3948	N 0° 18' E	1279.2	X	1279.2		6.70
	N 87° 40' W	1325.0	X	53.9		1323.9
	N 89° 15' W	1317.0	X	17.2		1316.9

1368.1	1368.4	3956.4	3956.2
		3956.2	3956.2
		0.3	0.2
1368.1	1368.1	3956.3	3956.3
		3956.4	3956.4





County Highway Rout #18 Div 5. Shts 3-4
 Sheet #4 bearings Highway N = N 0° 19' E closing line 23.8 long
 Traverse adjusted to close with Land survey

471 + 37.7
 T = 22.9
 470 + 93.0
 469 + 57.1
 T = 53.9
 468 + 51.8
 467 + 67.0
 T = 55.8
 462 + 58.2

444 + 40.4
 T = 24.6

422 + 90.6
 T = 34.7
 422 + 23.7

416 + 99.6
 T = 26.2
 416 + 74.6

387 + 13.4
 T = 39.22
 386 + 38.7
 385 + 51.9
 T = 37.4
 385 + 08.6

log 5027.8 = 3909596
 colog 5325.9 = 6273599
 log sum 10.178095
 S 56° 20' E

Sta	Sin	Cos	Bear	Dist	Lat Diff	Long Diff	Coordinates					
					N	S	E	W	N	S	E	W
				25130								
				26131								
	.00582	.99998	S 0° 19' E	972.6	972.6	5.5	5323.0					5336.1
			S 0° 20' E	941.6	941.6	5.5						5329.6
	93667	35021	S 69° 30' E	119.7	43.2	115.0	4350.4					5327.7
	97141	23740	S 76° 16' E	181.6	45.6	178.0	4307.2					5217.7
	92499	37999	S 67° 40' E	180.1	68.4	166.6	4261.6					5091.7
	66697	74509	S 41° 50' E	212.7	158.5	146.9	4193.2					4875.1
	95106	3090	S 72° 0' E	594.5	183.7	505.4	4039.7					4733.2
	97371	22778	N 76° 50' E	203.2	46.3	197.9	3871.3					4700.3
	85866	51254	N 59° 10' E	236.4	121.2	203.0	4018.5					3797.3
	99067	13629	N 82° 10' E	159.2	21.7	157.7	4040.2					3639.6
	97754	21076	S 77° 50' E	83.2	17.5	81.3	4022.7					3556.3
	85416	52000	S 58° 40' E	98.7	51.3	89.3	3971.4	1320.6		1905.7		3474.0
	94361	33106	S 70° 40' E	95.3	31.6	89.9						
	88158	47209	S 61° 50' E	208.7	98.5	184.0						
	82248	56448	S 55° 20' E	230.8	131.3	189.8						
	80730	59014	S 53° 50' E	193.0	84.4	115.4						
	87603	48226	S 61° 10' E	162.7	76.5	142.5						
	92276	38537	S 67° 20' E	74.7	28.8	68.9						
	87743	47971	S 61° 20' E	99.8	47.9	87.7						
	99047	13773	S 82° 05' E	54.8	7.5	54.3	3462.9	1429.1		2838.2		2541.5
	74217	67021	S 47° 55' E	39.2	29.1	30.2						
	93637	35102	S 69° 27' E	324.3	113.8	303.7						
	88526	46570	S 62° 17' E	155.0	72.1	137.2	3247.9	2044.1		3309.3		2070.4
	93010	36731	S 68° 27' E	82.0	30.1	76.3						
	76207	64679	S 49° 42' E	50.7	32.8	38.7						
	88048	47409	S 61° 42' E	115.9	54.9	102.0						
	84681	53189	S 57° 52' E	83.7	44.5	70.9						
	69508	71899	S 44° 02' E	111.5	80.2	77.5						
	81530	57909	S 54° 37' E	135.9	78.7	110.8						
	93534	35375	S 69° 17' E	148.0	52.4	138.4						
	77107	63675	S 50° 27' E	150.6	95.9	116.1						
	87420	48557	S 60° 57' E	188.3	91.4	164.6						
	74838	66327	S 48° 27' E	783.0	121.4	137.0						
	84989	52696	S 58° 12' E	491.2	232.5	375.0	2333.1	2958.9		4446.6		663.1
	99351	11378	N 83° 28' E	320.8	36.5	318.7						
	90800	25094	N 75° 28' E	264.3	66.3	255.8						
	96642	25545	S 75° 12' E	200.8	51.3	194.1						
	99625	08658	S 85° 02' E	80.9	7.0	80.6						
	92956	36867	S 68° 22' E	144.1	53.1	133.9						
	95389	30015	S 72° 32' E	82.2	24.7	78.4						
	98033	19737	S 78° 37' E	144.1	28.4	141.3						
	77199	63563	S 50° 32' E	361.7	229.9	279.2						
	83660	54781	S 56° 47' E	265.2	145.3	221.9						
	69193	72196	S 43° 47' E	127.9	92.3	88.5						
	53411	84542	S 32° 17' E	177.2	149.8	94.6	1654.1	3637.9		1223.3		663.6
	50929	86059	S 34° 37' E	175.3	150.9	89.3						
	31372	94952	S 18° 17' E	383.2	363.9	120.2						
	64768	76192	S 40° 22' E	229.1	174.6	148.4						
	96608	25826	S 75° 02' E	211.1	54.5	203.9						
	93789	34694	S 69° 42' E	160.3	55.6	150.3						
	92186	38752	S 67° 12' E	285.4	110.6	263.1						
	41257	91092	S 24° 22' E	133.4	121.5	55.0						
	79193	61061	S 52° 22' E	574.5	350.8	455.0						
	76267	64679	S 49° 42' E	452.5	292.7	345.1						
	1055	72577	S 46° 32' E	18.7	12.9	13.6						
			W	419.7								

Closing line

292.0
 5017.9
 292.0
 5325.9
 5856.7

8447.5
 417.7
 8027.8 E

2709.6
 8447.5
 5027.8
 7970.9
 2648.1

log 5027.8 = 3909596
 colog 5325.9 = 6273599
 log sum 10.178095
 S 56° 20' E

3.726406
 0.257348
 3.983754
 9632.7

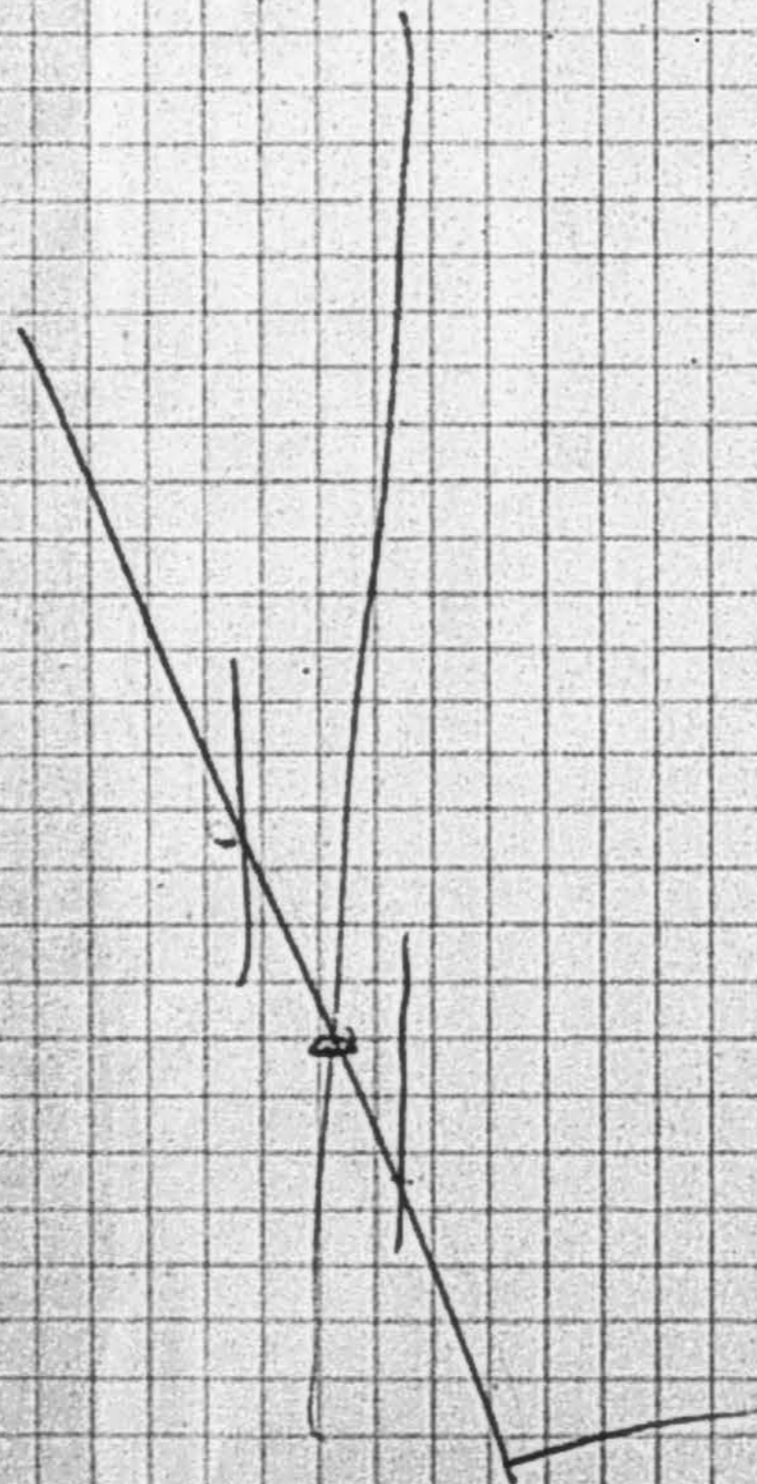
T10SR2 E

Cantfield Prop

or
Sparkman & Amago
Props.

Highway Trac. Rout 18 - ^{P187} ~~see~~ 5 sheets 985

J.C.M.



Ed Fletcher Papers

1870-1955

MSS.81

Box: 66 Folder: 25

**Business Records - Land Companies -
Miscellaneous land, with various Ed Fletcher
companies - Palomar Mountain survey**



Copyright: UC Regents

Use: This work is available from the UC San Diego Libraries. This digital copy of the work is intended to support research, teaching, and private study.

Constraints: This work is protected by the U.S. Copyright Law (Title 17, U.S.C.). Use of this work beyond that allowed by "fair use" requires written permission of the UC Regents. Permission may be obtained from the UC San Diego Libraries department having custody of the work (<http://libraries.ucsd.edu/collections/mscl/>). Responsibility for obtaining permissions and any use and distribution of this work rests exclusively with the user and not the UC San Diego Libraries.