

*Report and Index of
Underway Marine Geophysical Data*

Cook Expedition

Leg 11

(COOK11MV)

R/V Melville

(Issued November 2001)

Ports:

Naha, Okinawa (8 August 2001)

to

Lae, Papua, New Guinea (17 August 2001)

No Chief Scientist: Transit Leg

Computer Tech - John Chatwood

Post-Cruise processing and report preparation by
Shipboard Technical Support Group,
Scripps Institution of Oceanography
La Jolla, CA 92093-0223

NOTE: This is an index of underway geophysical data edited and processed after the completion of the cruise leg and is intended primarily for informal use within the institution. This document is not to be reproduced or distributed outside Scripps without prior approval of the chief scientist or the Shipboard Technical Support Group, Scripps Institution of Oceanography, La Jolla, California 92093-0223.

GDC Cruise ID# 295

**Report and Index of Navigation
and Underway Geophysical Data**

Processed by the Shipboard Technical Support Group
Scripps Institution of Oceanography

Contents:

Index Chart – gives track of cruise leg, dates, ports, and mileage of each type of data collected.

Track Charts– annotated with dates and hour ticks

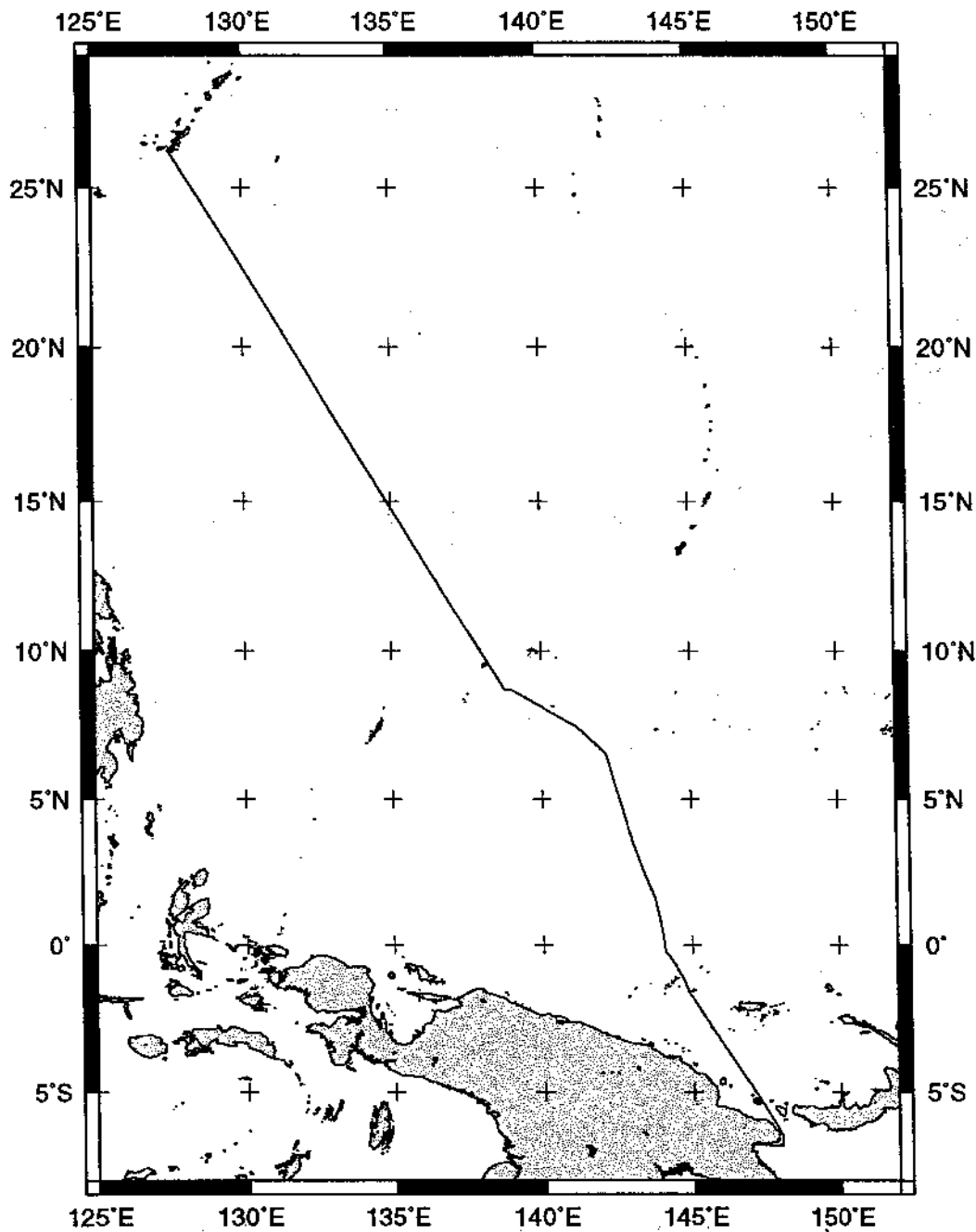
Profiles – depth, magnetic and gravity free air anomaly vs. distance. (Sections of track with seismic reflection data have a wide black line along the bottom of the profile.)

Sample Index – list of begin/end times and positions of all underway records as well as samples and measurements from other disciplines collected on the leg.

NOTE:

For information on the availability of this current digital data as well as archived digital data contact Stephen P. Miller, Geological Data Center, Scripps Institution of Oceanography, La Jolla, California 92093-0220 Phone: (858)534-1898, internet email: spmiller@ucsd.edu; or his Website: <http://SIOExplorer@ucsd.edu>

Rev 6/2001



COOK EXPEDITION LEG 11 (COOK11MV)

NO CHIEF SCIENTISTS: Transit leg

PORTS: Naha City, Okinawa - Lae, Papua, New Guinea

DATES: 08 - 17 August 2001

SHIP: R/V Melville

TOTAL MILEAGE OF UNDERWAY DATA COLLECTED

Cruise-2432 miles

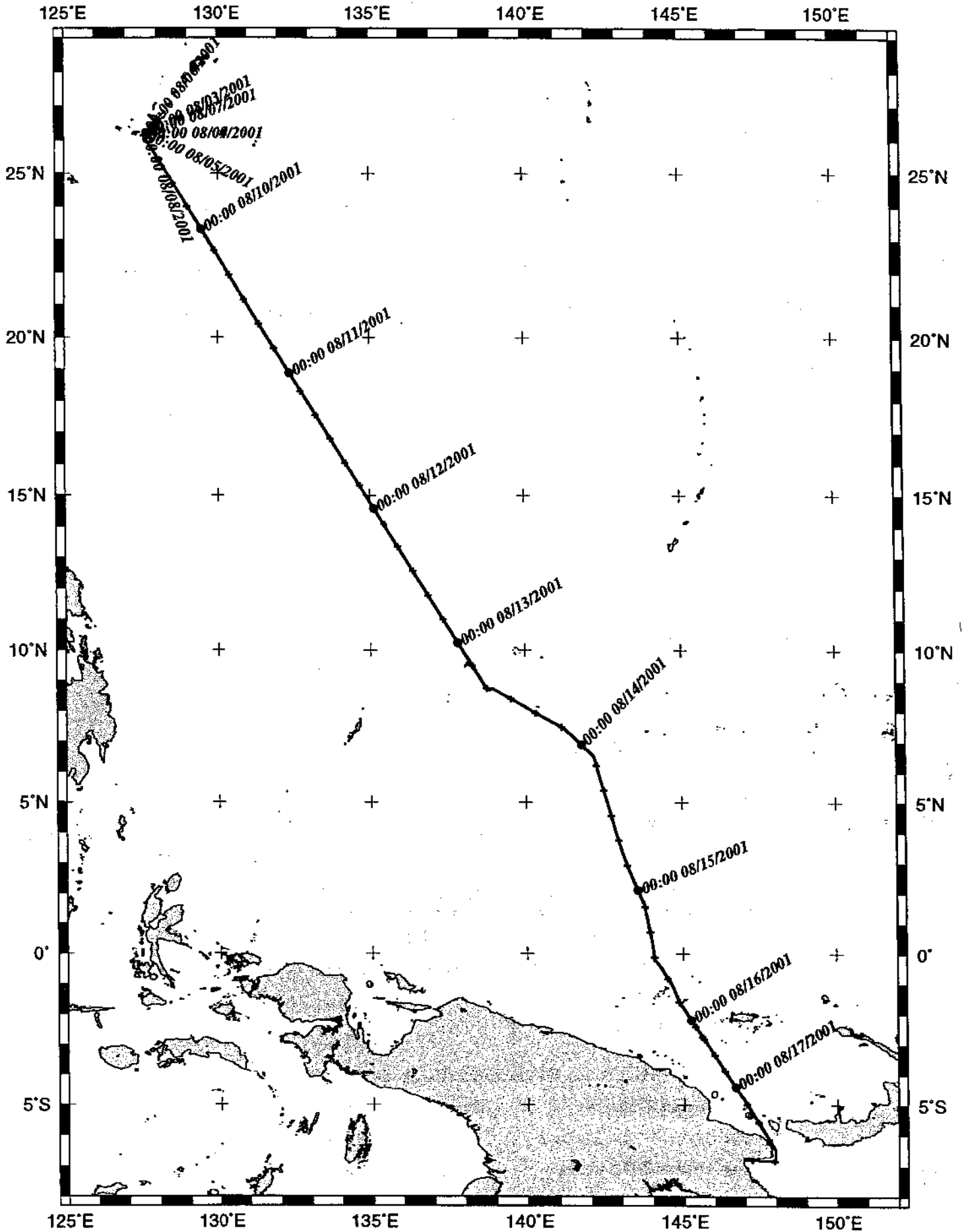
Magnetics-none collected

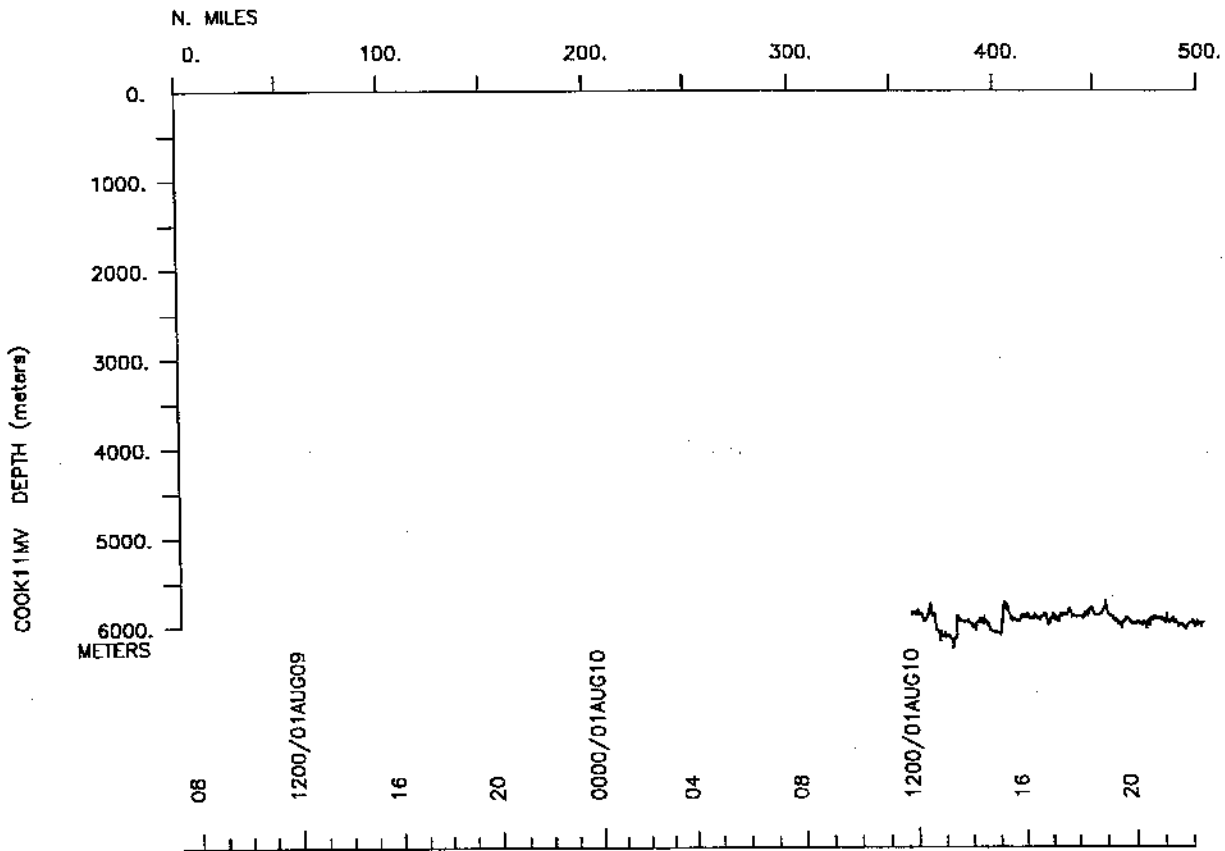
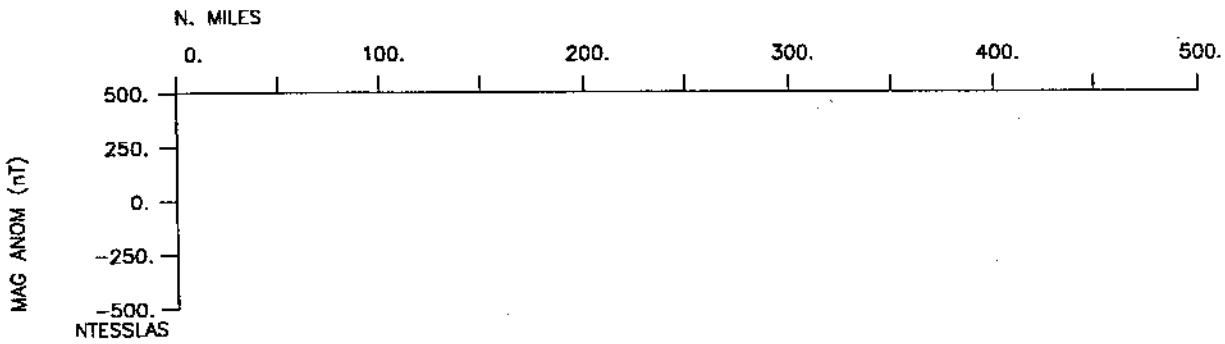
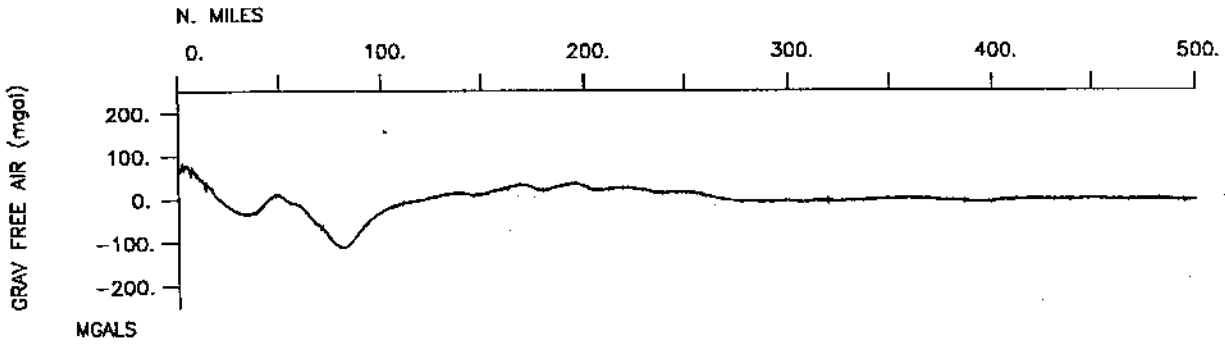
Bathymetry-2072 miles

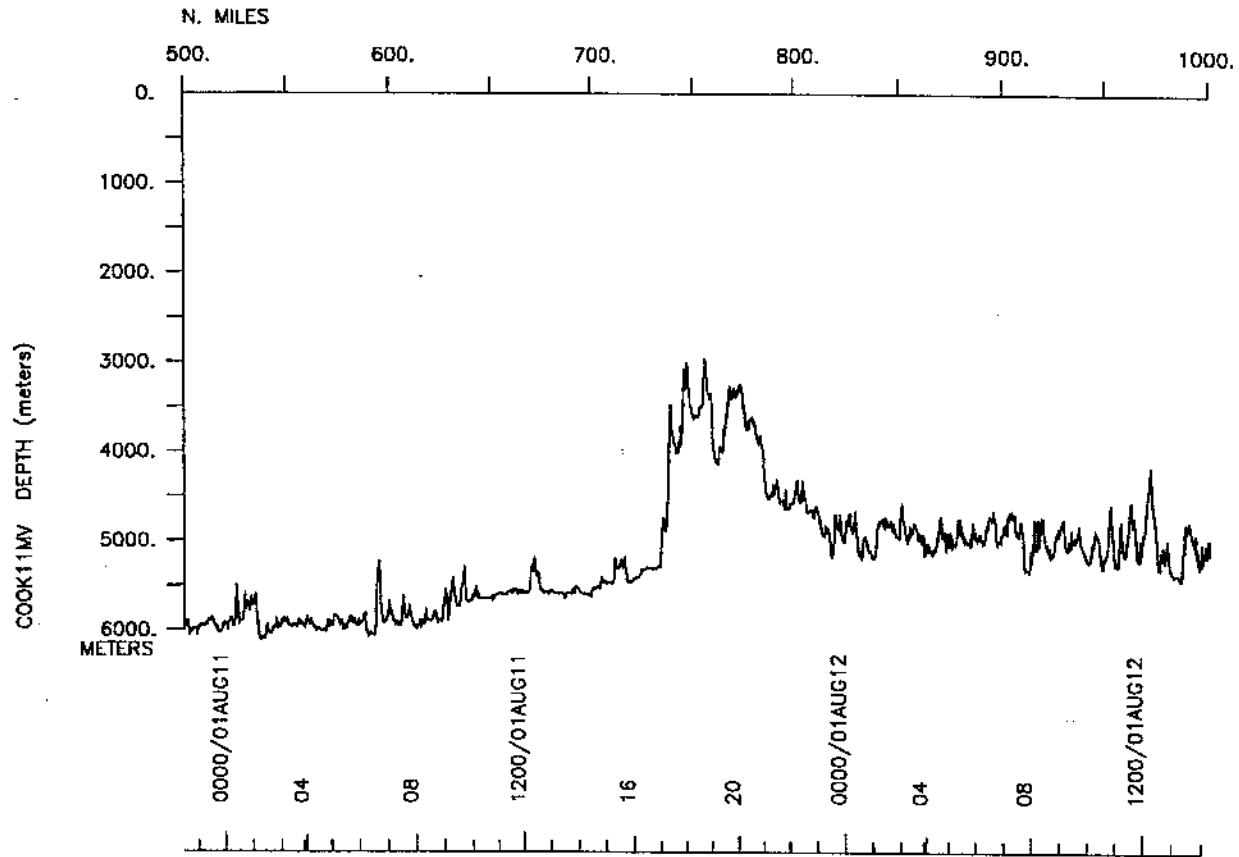
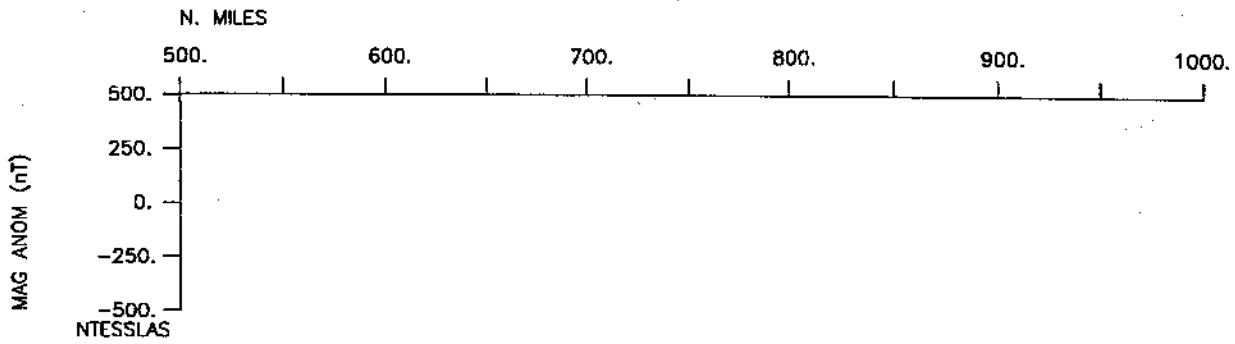
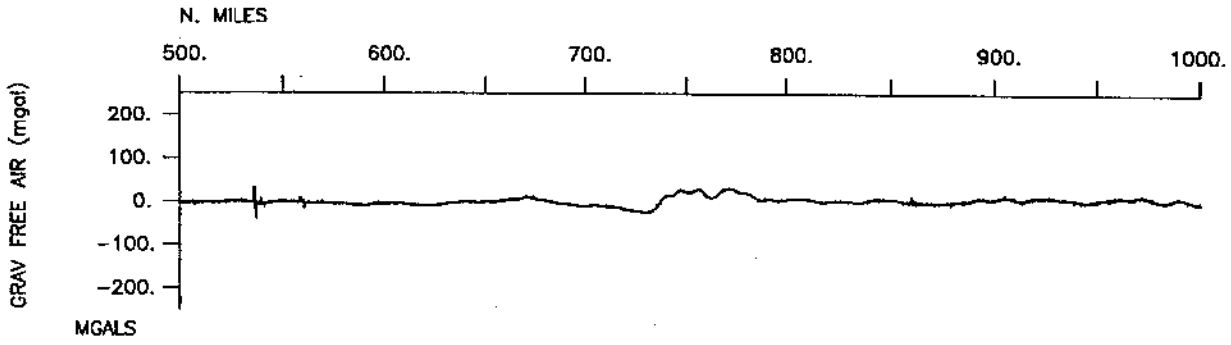
Seismic Reflection-none collected

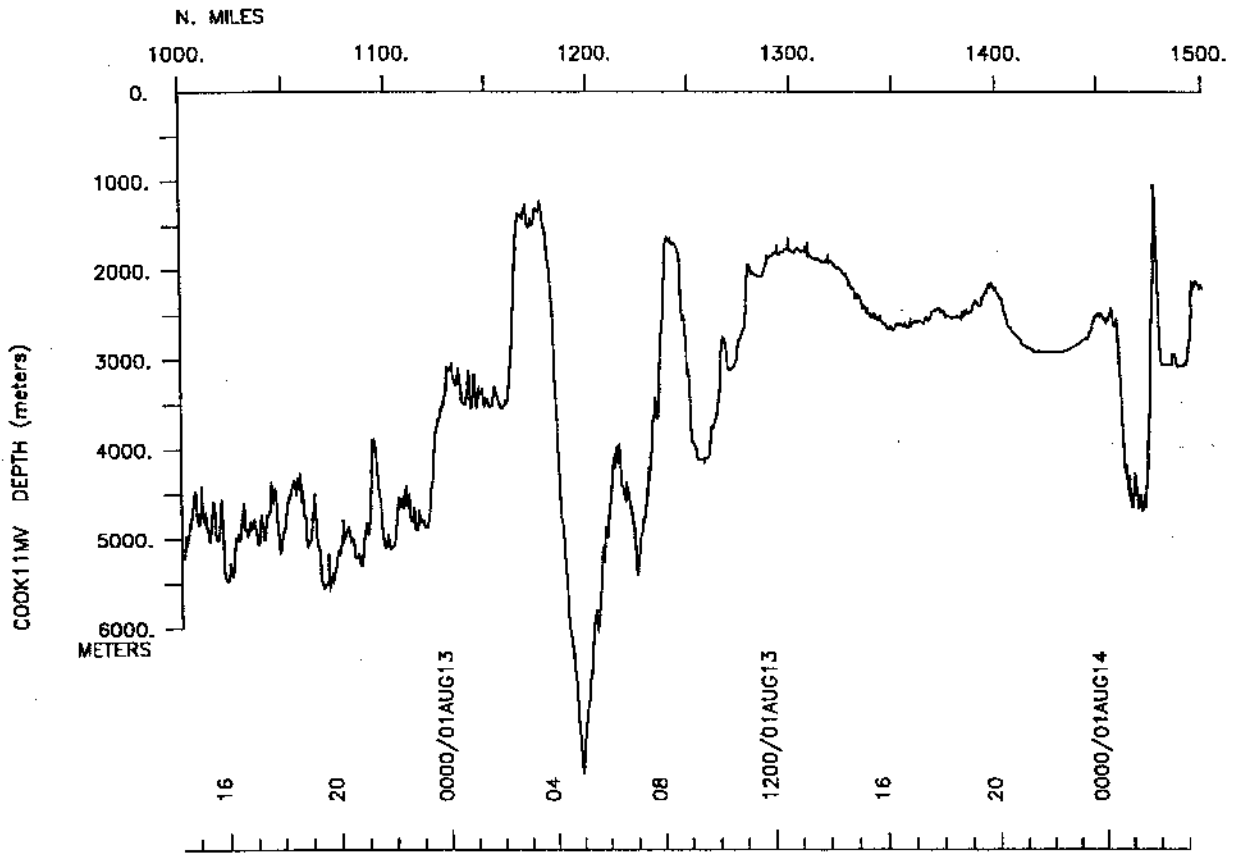
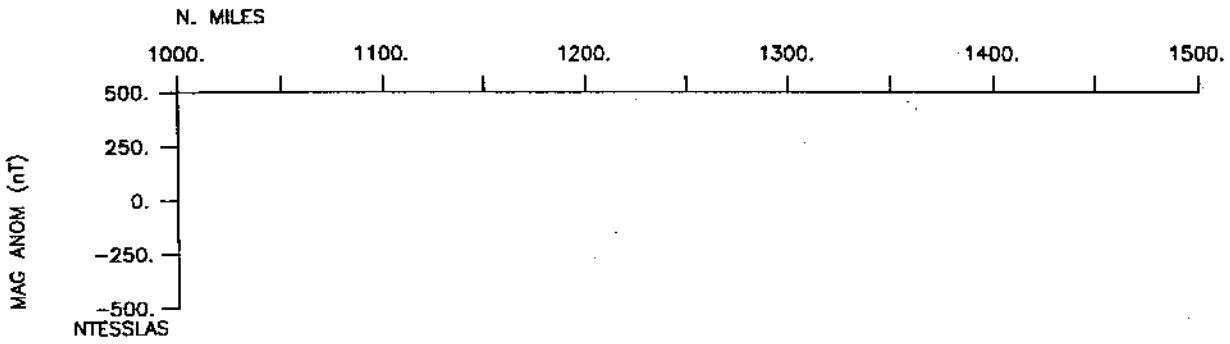
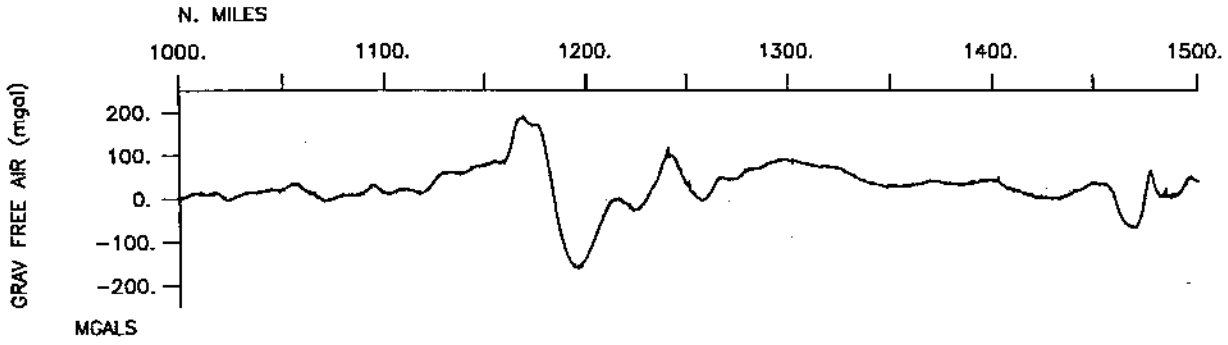
Sea Beam-2072 miles

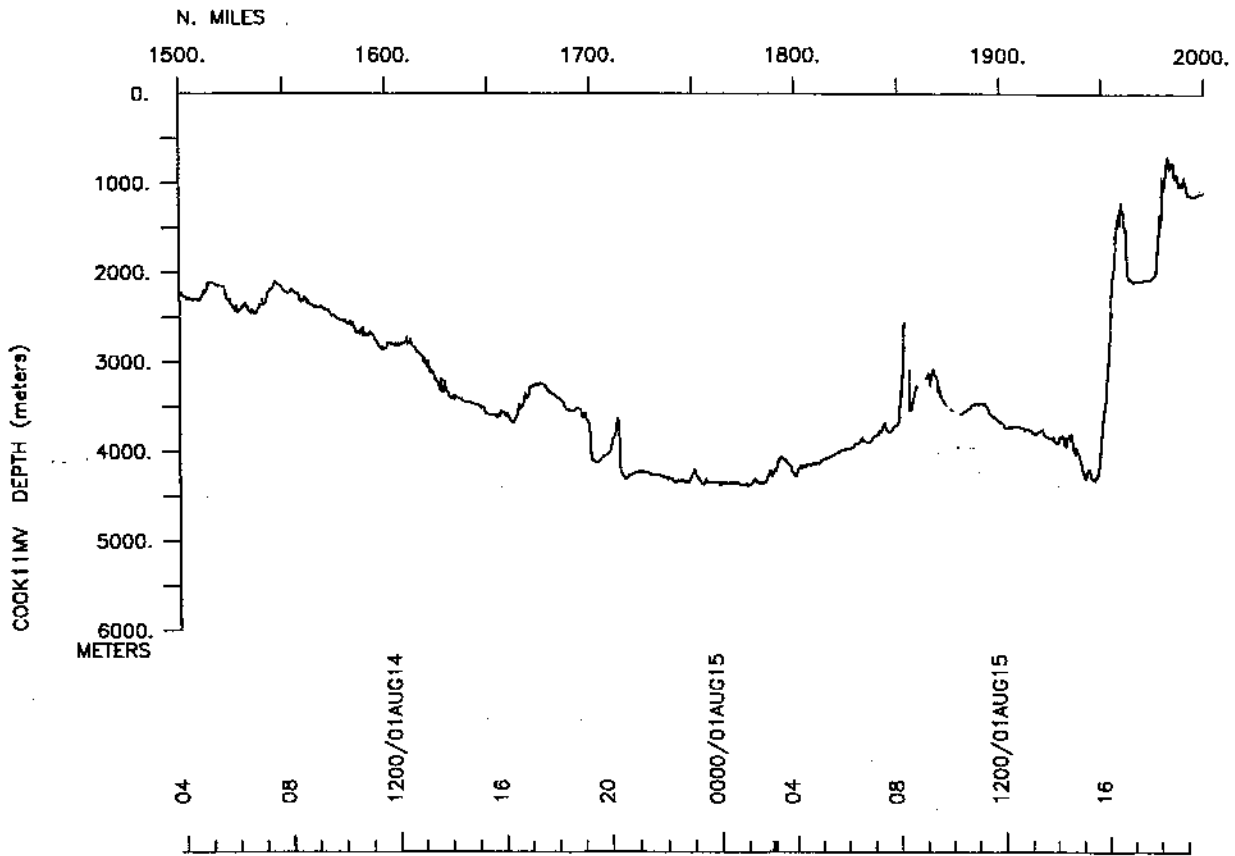
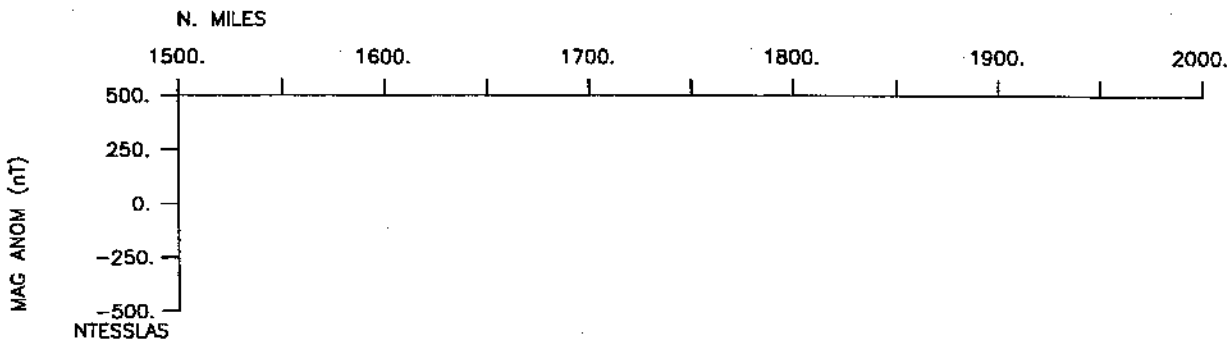
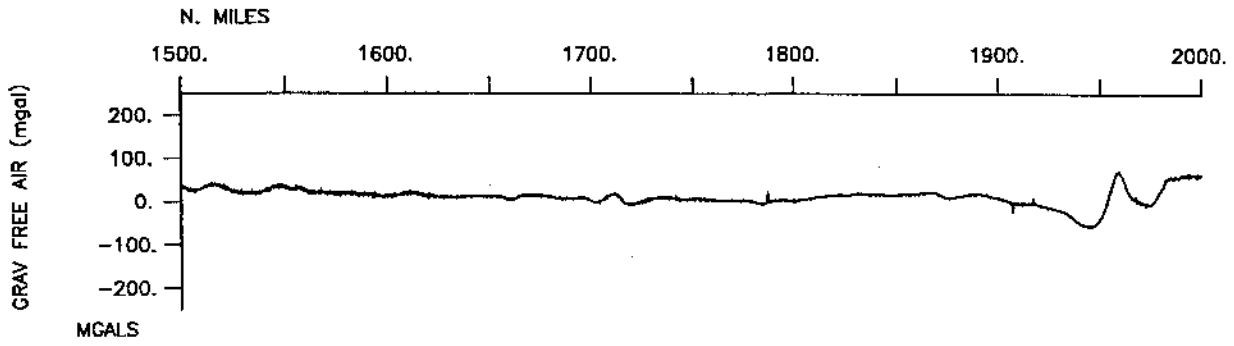
Gravity-2432 miles

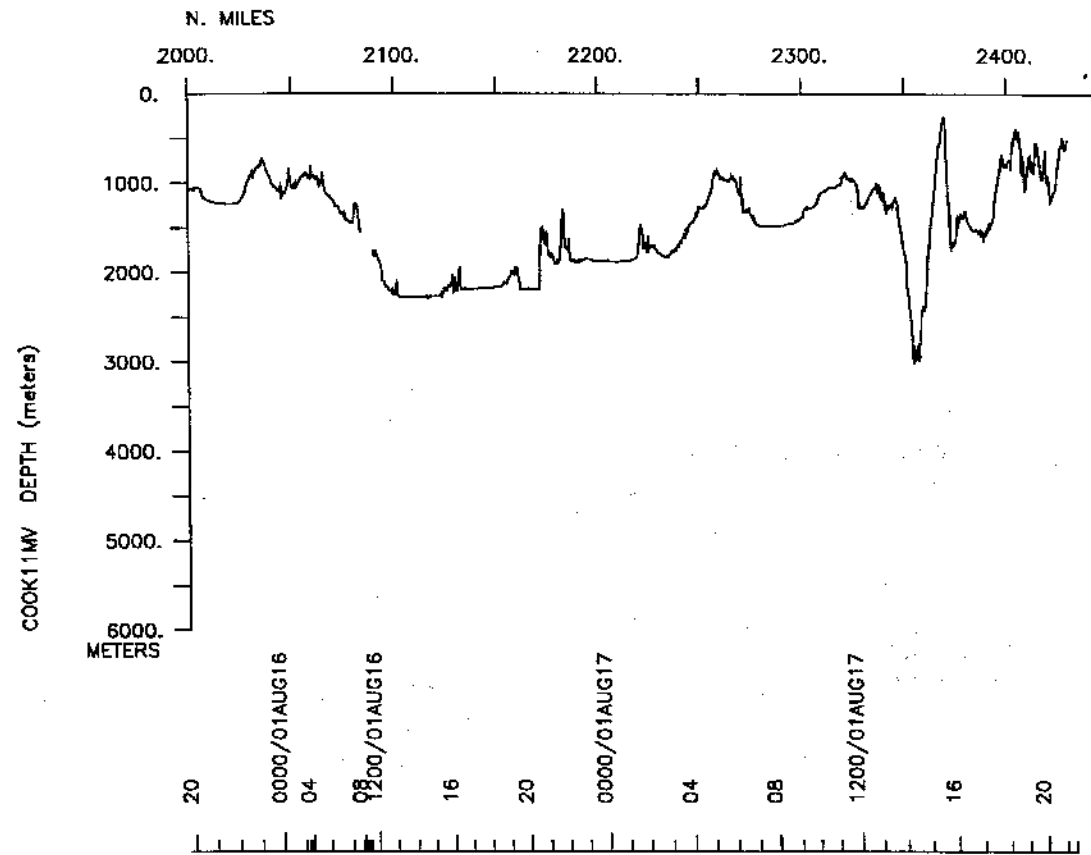
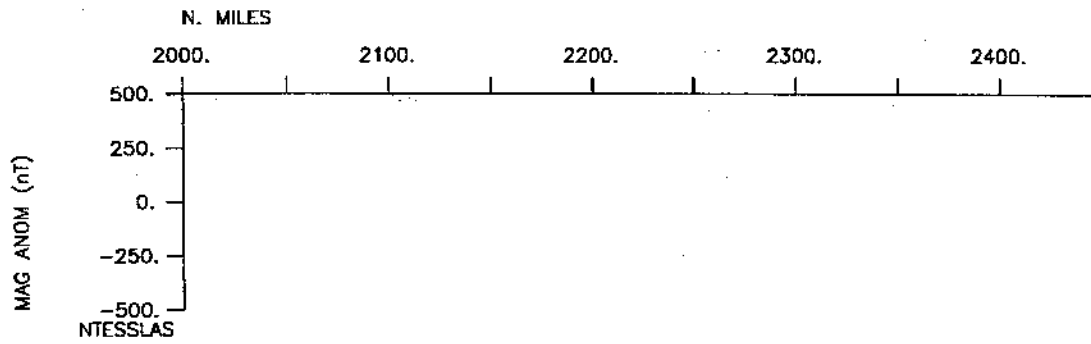
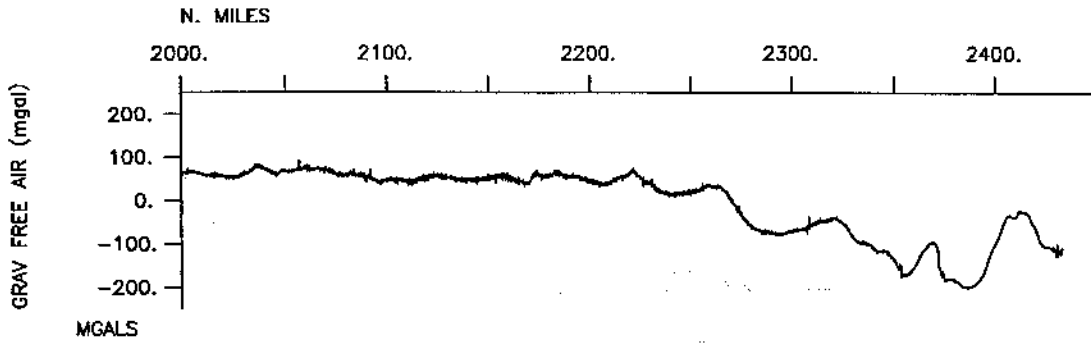












S.I.O. Sample Index

COOK Expedition

Leg 11

(COOK11MV)

R/V Melville

(Issued November 2001)

PORTS:

Naha, Okinawa (8 August 2001)

to

Lae, Papua, New Guinea (17 August 2001)

No Chief Scientist : Transit Leg

The Sample Index is a first level interdisciplinary listing of time, position, sample identification and disposition of all samples, records and measurements collected on this cruise leg. The index data are encoded at sea by the resident marine technician and processed on shore by the S.I.O. Shipboard Technical Support Group shortly after the completion of the cruise leg.

Positions are interpolated on the basis of sample time by comparison to a single, edited navigation file. Samples beginning at one time and position and ending at another are entered on two consecutive lines. Disposition and sample type are represented by three and four character codes to permit future computer searches on these parameters. (Listings defining these codes are available from the Shipboard Technical Support Group.)

GDC Cruise ID# 295