

National Archives & Public Records Services
of Papua New Guinea

PATROL REPORTS

DISTRICT : WESTERN HIGHLANDS PROVINCE

STATION : MINJ

VOLUME : 10

ISSN NO :

ACCESSION NO : 496

PERIOD : 1964 - 1965

Filed by/for the National Archives of Papua New Guinea
Port Moresby 1996

Sole Custodian: National Archives of Papua New Guinea

Papua New Guinea Patrol Reports

Digitized version made available by



Copyright: Government of Papua New Guinea. This digital version made under a license granted by the National Archives and Public Records Services of Papua New Guinea.

Use: This digital copy of the work is intended to support research, teaching, and private study.

Constraints: This work is protected by the U.S. Copyright Law (Title 17, U.S.C.) and the laws of Papua New Guinea. Use of this work beyond that allowed by "fair use" requires written permission of the National Archives of Papua New Guinea. Responsibility for obtaining permissions and any use and distribution of this work rests exclusively with the user and not the UC San Diego Library.

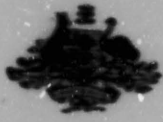
Note on digitized version: A microfiche copy of these reports is held at the University of California, San Diego (Mandeville Special Collections Library, MSS 0215). The digitized version presented here reflects the quality and contents of the microfiche. Problems which have been identified include misfiled reports, out-of-order pages, illegible text; these problems have been rectified whenever possible. The original reports are in the National Archives of Papua New Guinea (Accession no. 496).

WESTERN HIGHLANDS DISTRICT PATROL REPORTS

1964/1965

MINI

<u>Report No.</u>	<u>Officer Conducting Patrol</u>	<u>Area Patrolled</u>
1 - 1964/1965	G. Gomara	Nondugi and Bemana Area North Wall Waghi Census Div.
2 - 1964/1965	P.J. Walshe	Wall Waghi Census Div.
3 - 1964/1965	P.J. Walshe	North & South Wall Census Div.



TERRITORY OF PAPUA AND NEW GUINEA

27/10/22 (D)

Telegrams
Telephone
Our Reference: W.D.517
If calling ask for
Mr.



Department of District
Administration,
MOUNT PEARL W.R.D.

14th September, 1965.

The Director,
Department of District Administration,
HOVEDOMU.

NBW PATROL REPORT No. 1164/65
NORTH WARGI CENSUS DIVISION G. GOMARA, P.O.

I am attaching copy of Patrol Report by Mr. G. Gomara, with covering comments by the Assistant District Commissioner, Minj.

This patrol was of a normal routine Administration nature and I have nothing further to add to the comments by the Assistant District Commissioner.

J. Ellis
(J. M. ELLIS)
District Commissioner



TERRITORY OF PAPUA AND NEW GUINEA

2.

Telegram

Telephone

the Reference

If calling ask for

Mr.

considerable value in the general administration of the area as well as providing access for coffee buyers.

The situation generally in the area is satisfactory.

Mr. Comara has carried out a good patrol and submitted an adequate report.

E.A. Irollope
Assistant District Commissioner

ATT:



TERRITORY OF PAPUA AND NEW GUINEA

67 - I - 4

Telegram

Telephone

Our Reference

If calling ask for

Mr.

Sub-District Office

MINJ

Western Highlands District

7th August, 1965.

The District Commissioner
Western Highlands District
MOUNT HAGEN

MINJ PATROL REPORT NO.1 OF 1965/66
NORTH WALK WANGI CENSUS DIVISION

Submitted please, are original and copy of a report compiled by Mr. G. Couara, patrol officer, following a patrol to the above area. Patrol instructions, camping allowance claim, map and appendices are attached.

NATIVE AFFAIRS: Land disputes recorded for registration are not of an aggravated nature.

With the amalgamation of the MINJ and NANGAMP councils in September of this year, one of the first commitments of the new council will be to draft a rule aimed at control over bride wealth. Under normal circumstances, it would probably be unwise to interfere with the established bride wealth system. However, increasing inflation in bride payments in this Sub-District has resulted in prices utterly disproportionate to the ability to pay and this is having upsetting social effects on the people. The problem is pervading the people's thinking and a deterrent to development.

VILLAGE OFFICIALS: On a recent patrol conducted by Mr. Fonten A.D.C. and myself, much publicity was given to the proposed new council. Suitable representation was urged and pre-requisites for good councillors advertised. If this has sunk in the likes of Councillor WABI will not be re-elected.

AGRICULTURE: In the past week, all native farmers have been canvassed concerning the dangers in spread of 'coffee rust' and they have been instructed to report any symptoms to the Agricultural Officers at MINJ or NONDUGL.

ROADS & BRIDGES: The NONDUGL/ KURUMBA road was recently sighted by myself. This road was graded and constructed on the initiative of the people themselves and is a credit to them. If possible, some assistance will be given to them in surfacing. Very little remains to be done to connect the through route to NONDUGL. It will be of

(P)

TERRITORY OF PAPUA NEW GUINEA
DEPARTMENT OF DISTRICT ADMINISTRATION
PATROL REPORT

PATROL REPORT NO. WING 1 65/66.

OFFICER CONDUCTING PATROL: MR. G. GOMARA, PATROL OFFICER.

AREA PATROLLED: NONDUGL AND BAWANA AREA - NORTH WALL
WAGI CENSUS DIVISION.

PATROL ACCOMPANIED BY: 1 MEMBER OF R.P.N.G.C.
1 INTERPRETER.

DURATION OF THE PATROL: 21/6/65 - 18/7/65.
28 DAYS.

OBJECTS OF THE PATROL:

- (i) GENERAL NATIVE ADMINISTRATION.
- (ii) SETTLE MINOR DISPUTES AND
REGISTRATION OF ANY LAND CLAIMS.
- (iii) INSPECT NATIVE OWNED TRADE
STORES AND ADVISED TO RENEW THEIR
LICENCES AS AT THE 30/6/65.
- (iv) INSPECT NEW ROADWORKS FROM
NONDUGL TO KURUNBA/MILEP AND
ATTEMPT TO SETTLE DISPUTE OVER
SITING OF ROAD NEAR LUTHERAN
MISSION AT KAWUN.
- (v) CONDUCT MAINTENANCE DUTIES OF
OF MAIN ROAD BETWEEN NONDUGL STATION
AND EASTERN HIGHLANDS BORDER.

INTRODUCTION.

The area patrolled was WONDUGL - BAMANA area of the North Wall Wahgi Census Division of the Minj Sub-District.

The area patrolled is the eastern end of the North Wall Division bounded by the Al Creek on the west and the Eastern Highlands border on the east. On the north are the Wahgi-Sepik Divides and on the south is the winding Wahgi River flowing in the easterly direction. The foothills of the Divides are heavily timbered and the rest is the grassland with the patches of cassurinas and bamboo clumps, down to the flats of Wahgi River with swampy pitpit.

The purposes of the patrol were:-

- (a) Routine Administration
- (b) Settle minor disputes and register any land claims.
- (c) Inspect native owned trade stores
- (d) Inspect new roadworks from Wondugl to KURUMBA - MILEP.
- (e) Conduct maintenance duties of main road between Wondugl and Eastern Highlands border.

PATROL DIARY.

MONDAY 21st June, 1965.

Prepared to go on patrol. Patrol instructions and patrol advance issued. Per landrover left for BAMANA Rest House at 9.00am. Arrived 10.25 a.m.

Sent words out for 11 officials concerned of BAMANA and WONDUGL areas. Talked to the officials about the work and other minor things O.I.C. wanted me to carry out while on patrol. Awaited O.I.C., arrived 4.15 p.m., had word with me about 10 minutes later. Fresh food bought. Assault and marriage complaints settled by arbitration. Suspected theft of £20. O. O. with the persons concerned to Minj for further investigations by the Police Officer. Stayed overnight BAMANA Rest House.

TUESDAY 22nd June.

At 8.30 a.m. walked to Western and Eastern Districts boundary, inspected the road as I went along and instructed locals about the cleaning of the drains and edges.

On my way back, inspected native owned trade store and advised the owner to renew his licence. At 1.30 p.m. departed for Wondugl. Inspected a trade store owned by the BAMANA native. Talked to the Councillors about the next day's activities. Fresh food and firewood bought. Discussed with the officials about trade stores and couple of disputes over land and noted details for the registration purposes. Camped in an Aid Post. P.C.J. compiled. Stayed overnight at Wondugl.

WEDNESDAY 23rd June.

At 8.30 a.m. inspected Councillor KAMBI's trade store and reminded him to renew his licence. Walked down to Al Creek to see the natives gathering gravel. Picked up by P.W.D. tipper and drove to GAR Creek where six lines were working. P.W.D. grader started to work on the road. Tipper also started to gravel the road. After lunch walked back to the rest house, arrived 4.30 p.m.

PATROL DIARY (cont'd)

Complaint of pig settled between the natives WEI and MUNDU both of DAMBA Clan. Journal compiled. Stayed overnight at NONDUGL.

THURSDAY, 24/6/65.

Walked to GAR Cr. Listed names of those not present. At 10.30 am walked to MUMUMUL where OGANA Clan were working. Names of those absent listed. To BAMANA mission trade store. Marriage complaint heard and settled, divorced. Then to AL ck. to see the gravel been heaped. Returned to the rest house at 5.00 pm. Marriage complaint DAMBA Clan settled. Talked to the council about the next day's activities. P.O.J. compiled. Stayed overnight at NONDUGL.

FRIDAY, 25/6/65.

At 8.00 am. instructed those didn't turn up yesterday, roll called and sent them off to gather gravel. Adoption of a child heard and settled between the natives of BAMANA. Couple of minor complaints settled. At 1.30pm walked to AL ck. and back to NONDUGL Primary 'T' School where WUIGA Clan were. Back to NONDUGL. P.O.J. Stayed overnight NONDUGL.

SATURDAY, 26/6/65.

At 9.00am walked to NONDULNOLBULMA and inspected trade store. Then walked for about 30 mins. to settle them and see the compensation of 3 kaukau gardens, 7 yams, 26 pandanus and 2 bamboo clamps. After lunch observed. Stayed overnight at NONDUGL.

SUNDAY, 27/6/65.

OBSERVED. Details of an assault noted sent the persons concerned to Minj accompanied by Const. OKUK. Stayed overnight.

MONDAY, 28/6/65.

Started to at 10.00 due to the heavy rain. Const. OKUK returned from Minj. 10.00am to AL ck. and then back to the 'T' School where attendance was very poor by the WUIGAs. Worked whole day with the above line until 4.30pm. Back to NONDUGL. Stayed overnight.

TUESDAY, 29/6/65.

Road was very bad due to the last night's heavy rain, especially the portion between NONDUGL and BAMANA. From 8.30 am to 10.30 am worked with the WUIGAs near the 'T' School. Then walked to AL ck. Stayed down there until 1.30pm picked up by Nop's truck to KAKOWIL to see O.I.C. about stores.

At 5.00pm left for Minj. Picked up mail and rations from the Government stores. Left Minj at 6.30pm NONDUGL per A928. P.O.J. Stayed overnight.

WEDNESDAY, 30/6/65.

P.W.D. typper, grader and bulldozer were put on the above section of the road. At 8.30 am cycled to GAR creek. Then to MUMUMUL where OGANA Clan were working. Then to WUIGAs near the 'T' School and then to AL creek. Back to NONDUGL, heard couple of complaints about pig and 5 coffee trees. P.O.J. Stayed overnight.

PATROL DIARY (cont'd)

THURSDAY, 1/7/65.

At 8.30am cycled to GAR creek, spent about 30mins with councillors and they also approached me to work for 2 days. They wanted to talk to their people about council meeting tomorrow. Left for MUNDUMUL and spent about 30-40mins there. Then to WUIGAS near 'T' School, after 30mins to AL creek. Returned to the rest house at about 1.00pm. Awaited councillors if they had any complaints or worries. No worries or complaints. F.O.J. Stayed overnight.

FRIDAY, 2/7/65.

To KAMUN at 8.30am and inspected 3 trade stores. To ONUL to inspect new trade store. Walked back to KAMUN, settled dispute over siting of new road near the Lutheran Mission. Heard and noted land dispute details over YERI for registration. Settled marriage complaint then returned NONDUGL by 3.30pm. No complaints or worries brought forward. F.O.J. compiled. Stayed overnight NONDUGL.

SATURDAY, 3/7/65.

At 9.00am left for MINJ by bicycle. Picked up by A902 at KEROWIL bridge. Arrived 12.30pm. Met new A.D.C. Back to NONDUGL, picked up my sleeping gear and returned to Minj. Stayed overnight at Minj.

SUNDAY, 4/7/65.

Returned to NONDUGL at 10.00am by NONDUGL Dyna typper. Observed. Stayed overnight NONDUGL.

MONDAY, 5/7/65.

At 8.00am cycled to MUNDUMUL where GERAI's lines were. Then to GAR creek. Discussed with the Councillors about the attendance by the people. Cycled back to WUIGAS near the 'T' School. After lunch down to AL creek. Returned to NONDUGL at 4.30pm. Complaints of a pig and damaging of coffee trees by the pig heard and settled. F.O.J. Stayed overnight.

TUESDAY, 6/7/65.

At 9.00am to AL creek, whole morning spent there. After lunch to WUIGAS. Not fully attended, sent Councillor out to round up those available. Kept them working until 4.00pm. Returned to the rest house. Heard two marriage complaints, one was divorced. F.O.J. Stayed overnight.

WEDNESDAY, 7/7/65.

9.15 cycled to GAR creek. Spent whole morning at GAR. Then to MUNDUMUL. Down to AL creek at 2.00pm and returned to WUIGAS at 3.00pm. At 4.00 pm returned to the rest house. Heard divorce and the adoption of child complaints. Divorce is between KEROWAGI and MINJ natives. F.O.J. compiled. Stayed overnight.

THURSDAY, 8/7/65.

At 9.00am with Const. UKUK to GAR to see the Natives working there. To MUNDUMUL at 11.00am to see GERAI's lines. Back to NONDUGL at 12.30pm and lunched. At 1.00pm to 'T' School to WUIGAS and then to AL creek. Returned to NONDUGL at 4.00pm. No complaints brought forward. F.O.J. Stayed overnight.

(6)

PATROL DIARY (cont'd)

FRIDAY, 9/7/65.

At 9.00am investigated a suspected theft. At 11.30pm to MINJ by A9083. Issued with another week's rations. Returned to NONDUGL A866 at 7.00pm. Stayed overnight.

SATURDAY, 10/7/65.

Assembled with all the Councillors and other village elders at NONDUGL R/H, talked to them about gathering of gravel for the road next week. Heard couple of complaints about bicycle and marriage, both from PAULUS' line. OBS RVED. Stayed overnight.

SUNDAY, 11/7/65.

At 7.00am approached by Mr. W.A. SPACE regarding his radio which had been stolen last night. With Mr. SPACE drove to KEWAKUGL then back to NONDUGL. Const. OKUK was put in charge in investigating the stolen radio. OBSERVED. Stayed overnight.

MONDAY, 12/7/65.

At 9.00am to WUIGAs and worked with them for whole of the morning. Const. OKUK and Interpreter OBA cycled to GAR and MUNUMUL to see the natives working there. In the afternoon with the locals at GAR creek. Back to NONDUGL. Stayed overnight.

TUESDAY, 13/7/65.

At 8.00am I was approached by NOA and Councillor GERAI about Councillor WABI with some of the natives shooting off to TARI. To MINJ at 11.00am to see A.D.C. about the matter. Returned 3.00pm. Entered details of land dispute for registration. Stayed overnight.

WEDNESDAY, 14/7/65.

At 8.30am worked with WUIGAs for whole morning. Not fully attended, half the line went to JIMMI River. Inspected trade store built by Councillor KAMBI near KOMBULNO. Then to AL creek. Returned to NONDUGL. No complaints. Stayed overnight.

THURSDAY, 15/7/65.

After settling couple of complaints about coffee, cycled to MUNUMUL and BAWANA at 9.30am. Then to GAR creek and the attendance at these places were very poor. At 1.30pm returned to WUIGAs. 2.30pm to AL creek and the attendance was good and plenty of gravel gathered. Returned to the rest house, settled couple of minor complaints. Stayed overnight.

FRIDAY, 16/7/65.

At 9.30am walked to ELU near MOROMA, 1 1/2 hrs' walk. Inspected trade store built by WEANA-KAMP. Spent about an hour talking to the people about trade store and 22 men from JIMMI area approached me about migrating into MINJ Sub-District. Returned to NONDUGL. Settled complaints about garden and divorce. F.O.J. Stayed overnight.

SATURDAY, 17/7/65.

Heard few complaints, one of assault and couple of marriages. Packed up ready to return to Minj. Awaited transport. C.P.O. WALSH arrived at 4.30pm. Stayed overnight.

PATROL DIARY (cont'd)

SUNDAY, 19/7/55.

OBSERVED. At 2.30pm returned to Minj per NONDUGL transport.

END OF DIARY.

NATIVE AFFAIRS.

The area patrolled is under the NANGAMP Native Local Government Council and it is administered at village level by the Councillors.

The patrol was well received at all the centres visited. The village officials were co-operative at all times with the patrol. They aided by rounding up very available men to work on the road and to cart gravel for graveling of the road.

There were many small disputes brought forward but in most of these, the officials were able to come to a decision amongst themselves. These disputes consisted of non-payment of bride prices, debts and loans, divorce settlements, damaging of coffee trees by pigs and couple of child abduction. At the conclusion of each settlement the details were related to the patrol and the payment was made before the patrol so there would be no more growling about the above complaints in future.

During the patrol only three land disputes were recorded for registration. One of these was between the natives of NONDUGL in Minj Sub-District and of DEMG in Kerowagi Sub-District.

The problem of bride price is still arising in this area. The natives were also told by the Councillors that the council is now attempting to lower the bride price and costs of the plumes. Because of this, during my four weeks' patrol, eight bride price giving ceremonies were held. They feared that the prices might be lowered and won't receive fair amount of the bride price.

VILLAGE AND VILLAGE OFFICIALS.

Most of these people still live in huts and some of the huts visited were good, eg. BAMANA. Sanitation is satisfactory.

As the area patrolled is under the NANGAMP Native Local Government Council, all the officials are the Councillors of the above council. The councillors are assisted by the committees and each councillor has a committee. Most of these committees are very helpful and they do more work than the councillors themselves. The councillors appeared satisfactory, helpful and most of them seem to have good control over their lines.

During my four weeks' patrol Councillor WABI-OURO appeared useless and inco-operative. His own line also approached me about his not doing his duties. They were advised to keep this in their mind until the next council elections will be held for the unopposed councils of MINJ and NANGAMP Native Local Government Councils.

NATIVE AGRICULTURE AND LIVESTOCK.

Subsistence gardening/^{is} still practised. The native crops grown are sweet potatoes, bananas, sugarcanes, etc, same subsistence crops included in previous patrol reports. Some European vegetables are also grown, such as cabbages, tomatoes, onions, etc.

Arabica coffee is becoming extremely important around this area (or whole of the Sub-District) because it is the main cash crop from which most of the income is received. The native owned coffee are picked and dried then sold to the local European coffee buyers.

Introduction of tea in the highlands is going to be another important cash crop for the natives. Already 19 tea blocks at NONDUGL have been allocated to the natives from the area patrolled. 9 blocks to the ERUKA/SIRAIKUBA Clans, 4 blocks to OGOKA Clan, 3 blocks to DARUANKAN Clan and 4 blocks to KOREKA Clan.

Not much can be said under the heading 'Livestock' for this area but as it is known that pigs^{and} dogs are the main ones bred by these people.

LAW AND JUSTICE.

Apart from three cases of assault which were sent to Minj to be heard in the Court for Native Affairs, the complaints were cases of debts, marital strife and payment, and compensation of coffee trees of native owned pigs.

Most of these small disputes presented were settled by the Councillors and only those which the Councillors couldn't arbitrate were heard by the writer.

As a whole, the area patrolled was pretty fair in regard to law and order.

REST HOUSES.

There are five rest houses in the area patrolled. Two of the above five need replacement, ~~NUMBUKORA~~ and ~~BARANA~~ rest houses. The rest are in good repair. ~~NUMBUKORA~~

HEALTH.

The health of the people is good in general and very few cases of any types of sickness were seen.

There are ^{two} well run Aid Posts at ~~BARANA~~ and NONDUGL. These Aid Posts are staffed by the Aid Post Orderlies and are well looked after. These two Aid Posts are ~~run~~ run and equipped by the Administration.

EDUCATION.

Education in this area is covered by Catholic and Lutheran Missions. There are only ^{two} recognised schools in this area. One of them is the Administration school, NONDUGL Primary 'T' school and the other is run by Catholic Mission at NONDUGL. Both of these schools teach students Preparatory classes to Standard 3 level.

There are other schools which are run by the Missions as I said in the first paragraph but these schools are not recognised by the Education Department. They are staffed by the native mission Pastors or Catechists and they teach mainly Christianity.

ROADS AND BRIDGES.

The main HIGHLANDS HIGHWAY runs through the area from west to east. This road is maintained by the Public Works Department and it is good in all weather for every vehicle (except the AL River cutting.)

There is also another road, NONDUGL/KURUMBA road branching off near the NONDUGL Primary T' School to link BOLIMBA/MILEP road. This road is still under construction. The road is being built so that it would be possible for the trucks to drive through the area to buy the coffee for the natives. There is also another access road from NONDUGL down to the WANGI River and it is still under construction. This road is being constructed so that the gravel from the banks of WANGI River can be carted for the road maintenance purposes.

Not much can be said about bridges in this area because they are all maintained by P.W.D. and are kept in good condition.

MISSIONS.

There are two missions operating in this area, viz, Lutheran Mission and Roman Catholic Mission. The latter has its station at NONDUGL whilst the former at BANZ.

The former has five centres at KAMUK, OBODAUBI, GUN, KLU X and NONDUGL and the latter has at KOFMA, MURUMBA, and DIMA. All these centres are staffed by the native catechists or evangelists.

OTHER MATTERS.

1. TRADE STORES.

During this patrol I inspected seven licenced native owned trade stores and advised the owners to renew their trading licences as at the 30th. June, 1955. I also inspected four new trade stores and recommended that the trading licences be issued to the owners.

Following the conversation verbally with the Assistant District Commissioner, Minj, about the native owned trade stores, I would recommend that in future any trade stores built by the natives, the owners be issued with provisional trading licences for the period of 3 months. This does not apply only to the area patrolled but whole of the Sub-District. After the recommended period of 3 months is over, an officer of the District Administration has to go out and inspect the store and make recommendations whether or not the trading licence, be issued.

2. CONCLUSION.

Most of the centres visited during the patrol are within easy reach from the Minj Sub-District Headquarters. The natives of the area patrolled are keen to improve their economy by planting cash crops as coffee and newly introduced tea crop.

The attitude of the people towards the patrol was good and the patrol was well received.

3

APPENDIX 'A'

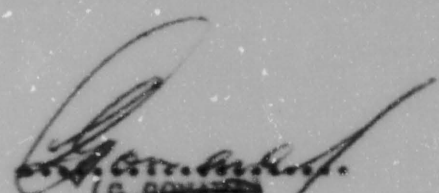
REPORT ON MEMBER OF ROYAL PAPUA & NEW GUINEA CONSTABULARY.

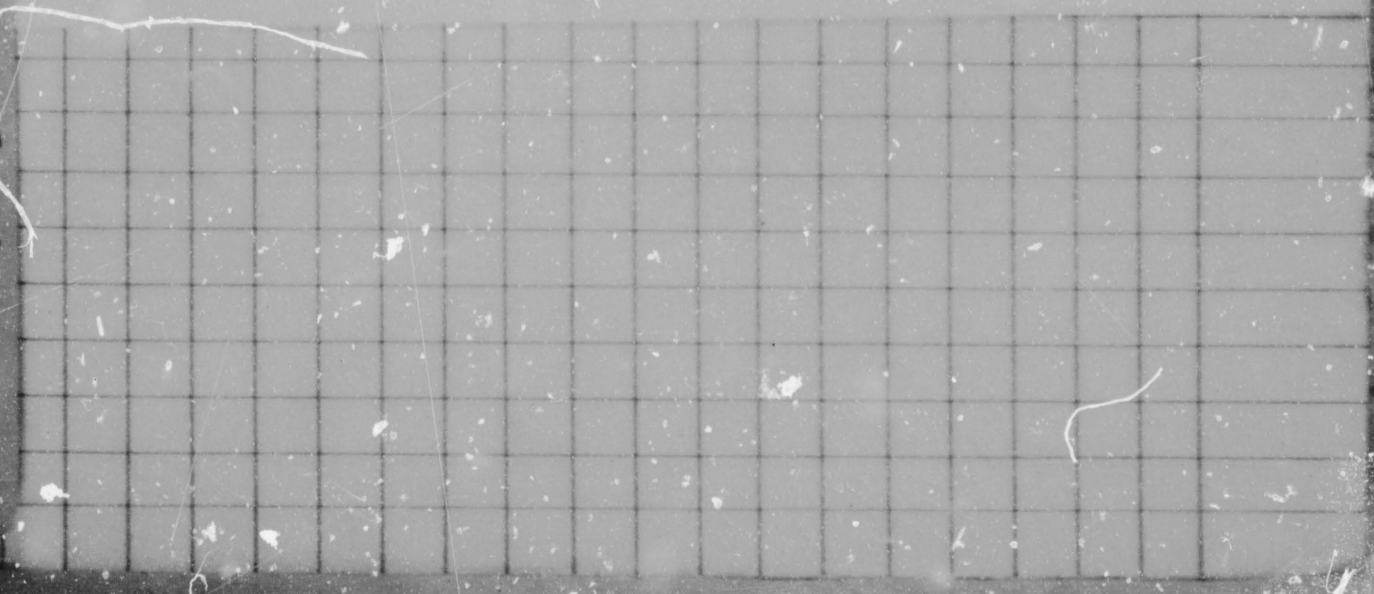
Reg. No. 7690 Const. OKUK /PALMA

DISCIPLINE: Very good.

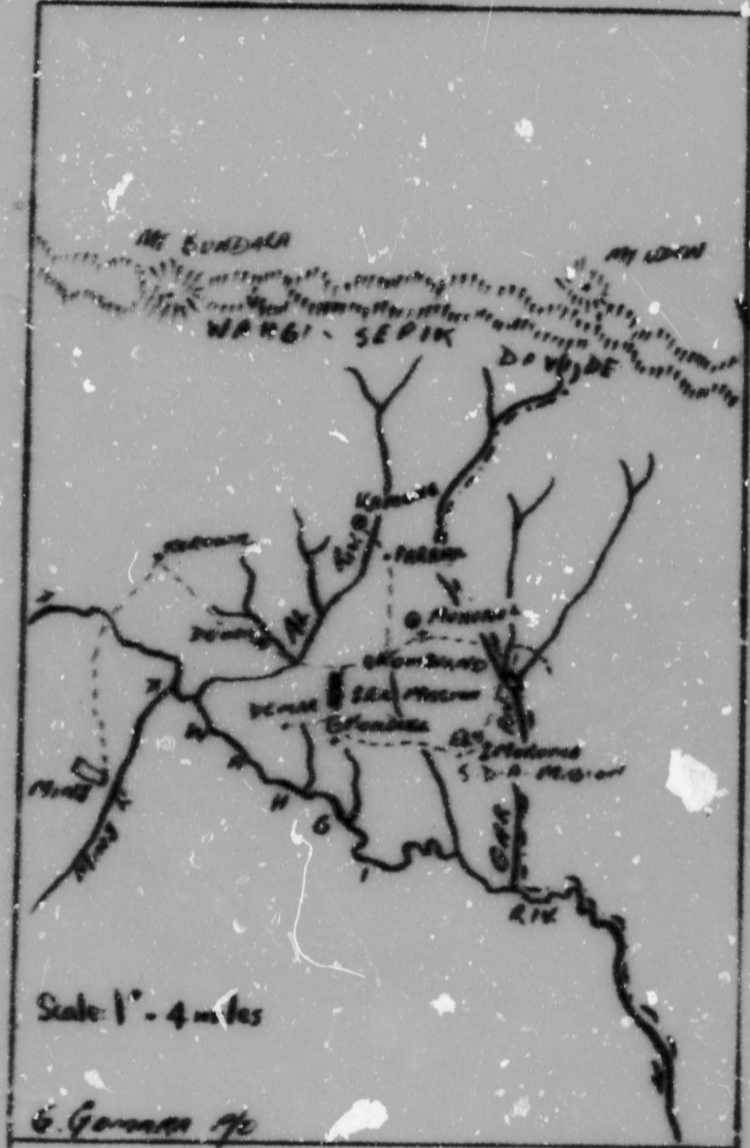
APPEARANCE: Smart and alert.

GENERAL ABILITY: An experienced constable and capable patrol man. Good N.O.O. material.


G. SOMMER
PATROL OFFICER.



MAP ACCOMPANYING PATROL REPORT
No. 1 of 1965/66



Scale 1" = 4 miles

G. Gorman

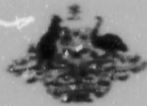
○ RECTHOUSE + AID POSTS † MISSION
- - - PATROL ROUTE - - - DISTRICT BOUNDARY

DDA

21

Commissioner

Amount Returned to State



TERRITORY OF PAPUA AND NEW GUINEA

PATROL REPORT

District of WESTERN HIGHLANDS Report No. MINJ No. 3 1964/65

Patrol Conducted by B.J. WALSH CADET PATROL OFFICER.

Area Patrolled SOUTH WALL WAHGI CENSUS DIVISION (MINJ SUB - DISTRICT)

Patrol Accompanied by Europeans 70

Naives: 1 INTERPRETER: 3 MEMBERS R.P.N.J.C. 1 COUNCIL CLERK.

Duration - From 22/2/1965 to 25/3/1965

Number of Days 32

Did Medical Assistant Accompany? NO

Last Patrol to Area by District Services 1/2/29/63

Medical ... 1/19

Map Reference

Objects of Patrol CENSUS REVISION TAX COLLECTION ROUTINE ADMINISTRATION

DIRECTOR OF DISTRICT SERVICES
AND NATIVE AFFAIRS
PORT MORESBY.

Forwarded, please.

/ 19

District Commissioner

Amount Paid for War Damage Compensation ... £

Amount Paid from D.N.E. Trust Fund ... £

Amount Paid from P.E.D.P. Trust Fund ... £

pu

67-14-20

28th September, 1965.

District Commissioner,
Western Highlands District,
MT. HAGEN.

MINI PATROL REPORT NO. 2/64-65:

Receipt is acknowledged with thanks of a Patrol Report by Mr. Walsh, covered by your memorandum WHD.521 of 14th September 1965.

2. Your comments and those of Messrs. Orwin and Trollope were noted.

3. Mr. Walsh seems to have accomplished the tasks set him quite capably. The report is neatly laid out and clearly expressed. For his first report he has set a fairly good standard.

(T.C. Aitchison)
A/DIRECTOR

CU

67. N. 20. (5)



TERRITORY OF PAPUA AND NEW GUINEA

Telegrams
Telephone
Our Reference: 21221
If calling ask for
No.



Department of District
Administration,
MERE RAPE, N.P.G.

15th September, 1969.

The Director,
Department of District Administration,
MERE RAPE.

MEMO PATROL REPORT No. 2-04/69
SOUTH WALK WARDI CENSUS DIVISION MEM
SE-DISTRICT

I am forwarding Patrol Report for the above
area.

The main information contained in this report
are the village population registers.

The Commissioner
(T.M. SILLIS)
District Commissioner

(16)

= COPY -

67-1-3
67-1-4

Sub-District Office
MINI
Western Highlands District

14th August, 1965

The District Commissioner,
Western Highlands District,
KORUP HAGEN.

PATROL NOS 2 & 3 of 1964/65 - MR. P.J. WALSH C.P.O.
NORTH & SOUTH WALL WARDI CENSUS DIVISION

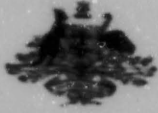
Forwarded please are copies of the above patrol reports
submitted by Mr. P.J. Walsh C.P.O.

Mr. Grwin A.D.C. had commented on these reports and
their forwarding was delayed by census statistics compilation
apparently.

For your information please.

C.A. Trollope
Assistant District Commissioner

Att:



TERRITORY OF PAPUA AND NEW GUINEA

Telegram
Telephone
Our Reference: 67-1-3
If calling ask for
Mr.

Sub-District Office,
Western Highlands,
MIM.

1st June, 1965.

The District Commissioner,
Western Highlands District,
MIM.

PATROL - 2/1964-65 - SOUTH WALL WANGI CENSUS DIVISION.

Attached please find 2 copies of Report by Mr. J. J. Walsh, Cadet Patrol Officer of a patrol to the South Wall Wangi Census Division. Copy of Census figures for P.M.D., Benedobu and Clain for Camping Allowance are also enclosed.

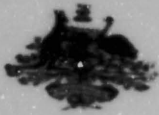
This was Mr. Walsh's first patrol since being posted to Mij and was carried out to give him training in census taking, general field Administration and also to give him an insight into Council activities more especially that of tax collection.

In his Report Mr. Walsh has given a clear picture of the conditions existing in the Census Division. The appendices to his Report indicate a reasonable state of affairs with regard to Agriculture, Health, and Education. The Mij Technical School at TOMBI is now providing technical education to the youths of the Sub-District which has been a long felt need in this sphere of education.

As you are aware I have, myself, been carrying out a routine patrol in this Census Division as a follow-up patrol to that of Mr. Walsh's.

Mr. Walsh's Report of his first patrol is neat and clearly expressed.


(D. G. SMITH)
ASSISTANT DISTRICT COMMISSIONER.



TERRITORY OF PAPUA AND NEW GUINEA

12

Telegrams
Telephones
Our Reference 57-1-2.
If calling ask for
Mr.

Sub-District Office,
Western Highlands,
MIM.

15th February, 1965.

Mr. P. J. Saloba,
Cadet Patrol Officer,
MIM.

PATROL - SOUTH WALL WAGI CENSUS DIVISION.

Please make arrangements to depart on patrol on 22nd February to the South Wall Wagai Census Division commencing at AVIAMP Rest House.

Purpose of the patrol is for:-

- (1) Census Revision
- (2) Routine Administration
- (3) Assist, as required, in the collection of Council Tax by Local Government Clerks.

It is expected that the patrol will be of approximately one month's duration. You should make arrangements to have 3 members of B.P.N.G.C. and 1 Interpreter accompany you and accordingly please draw rations for your party.

A Local Government Clerk will also accompany the patrol for the purpose of collecting Council Tax. Please discuss his duties with Mr. Fenton prior to your departure.

In addition to carrying out census revision it will be necessary for you to report fully on all aspects of Native Affairs, the work of village officials, roads and bridges, law and Justice, and any relevant matters which arise or come to your notice during the course of the patrol.

Please also consult the matters for attention on Patrol File and attend to any matters on patrol should action be required on same.

Any matters requiring Court action should be referred to this office.

As this is your first patrol in the Sub-District please do not hurry through the area but give the local people ample opportunity to discuss any matters they might wish to raise with you whilst in the Census Division.

Copies of map, report on members of B.P.N.G.C. and census figures will be required in addition to your report.


(R. G. GWYN)
ASSISTANT DISTRICT COMMISSIONER.

Feb. 13th, 1944. Reported census statistics and heard petty complaints.

Requested for # 12345, West Street, West Street.

Feb. 14th, 1944. Census taken. Confirmed census statistics.

Feb. 15th, 1944. Heard petty complaints before reporting for #12345, West Street, West Street.

Feb. 16th, 1944. Requested.

Feb. 17th, 1944. Census taken. Confirmed census statistics.

Feb. 18th, 1944. Requested for #12345, West Street, West Street.

Feb. 19th, 1944. Reported census statistics and confirmed on Village Books, West Street.

Mar. 1st, 1944. Heard petty complaints before reporting for #12345, West Street, West Street.

Mar. 2nd, 1944. Requested.

Mar. 3rd, 1944. Census taken. Confirmed census statistics.

Mar. 4th, 1944. Requested.

Mar. 5th, 1944. Reported for #12345, West Street, West Street.

Mar. 6th, 1944. Census taken. Confirmed census statistics.

Mar. 7th, 1944. Requested.

Mar. 8th, 1944. Heard petty complaints before reporting for #12345, West Street, West Street.

END OF REPORT IN SOUTH HAVEN POLICE DIVISION.

67-1-3.

Sub-District Office,
Western Highlands,
MINJ.

27th April, 1965.

The Assistant District Commissioner,
Sub-District Office,
MINJ.

PATROL REPORT MINJ No. 1 - 1964/65.
SOUTH WALL WARGI CENSUS DIVISION.

INTRODUCTION:

The area patrolled was the South Wall Wargi Census Division of the Minj Sub-District.

The purposes of the patrol were: (a) Census Revision
(b) Tax Collection
(c) Routine Administration

NATIVE AFFAIRS.

At all rest houses the patrol was greeted with enthusiasm evident by the warm welcomes and the large amounts of fresh foods presented to the patrol.

Native administration at the village level is carried out by Councillors of the Minj M.L.G. Council. To a large extent, most of the councillors are capable in the roles; but there are, who seem incapable of commanding the leadership of a group. In cases like these the people tend to fall back upon the ex-Lulusais and Tultuls for advice.

In all, the native situation in this area is very good.

VILLAGE OFFICIALS.

The village officials in the area patrolled are with one exception, councillors of the Minj M.L.G. Council. The exception is the group of Lulusais and Tultuls to be found at KUGMARI rest house. When the amalgamation of the Kerowil and Minj M.L.G. Councils comes about later this year, the groups at KUGMARI will be represented by one councillor.

Most of the councillors were co-operative in their workings with the writer. As this was first time the writer has worked with Councillors, only a general impression of the different councillors' capability. The writer found that the capability of councillor could tend to be judged from the number of petty complaints (most of which could be easily settled by the councillors) brought before the writer. For instance, one councillor at BEGHE rest house brought forward no fewer than 14 very petty complaints to be straightened by the writer.

Taking everything into consideration ~~though~~, the officials in this area are pretty capable.

ROADS AND BRIDGES.

The area patrolled is served by a secondary vehicular road which extends from the TUMUP River in the west to MINGEWDI in the Eastern Highlands.

The condition of the road(s) varies from good to bad; after heavy rain some sections are only open to vehicles with

four-wheel drive. Most of bridges are in good state; the only troubles found were the lack of the nails for the smaller bridges and the delay in getting timbers for patching up bridges.

With more and more people growing coffee, they are realizing that it is in their own interests to maintain the roads and bridges in their respective areas i.e. if this is done it will facilitate the movements of transport in buying coffee.

REST HOUSES.

There are ten(10) rest houses, all of which are in good condition. There were no cases of the writer having to tell any groups to repair a rest house.

LAW AND JUSTICE.

Many petty complaints were brought before the writer for settlement outside court.

The main method of settlement was by arbitration, when a complaint of serious theft or land dispute was brought before the writer the case was sent to Ming to be heard.

Most the complaints heard by the writer were marital disputes stemming from the inability on the part of the young men to pay the high bride price now demanded.

This increase in bride price has probably come about as a result of the young women today being able to marry men of their choice.

Since a system of limiting the amount to be paid for bride price would be impracticable, there is really no way in which it can be overcome. Other cases dealt with included petty debts, compensation for damage to gardens by pigs (and natives), and cases of unfaithful wives.

MISSIONS.

In the area patrolled there are five Mission stations, four of which are manned by Europeans.

The organization and work of these missions has been dealt with thoroughly with before, so little need be said here.

Schools and hospitals, as well facilities for worship are the main ways in which the missions aid the local peoples.

EUROPEANS.

There are eight plantations, two of which employ local labour. As well there are the above mentioned Mission stations manned by Europeans. Other European business activities include the buying of native produced coffee as well as the running of trade stores.

The relations between the Europeans is very good with no serious complaints on either side.

CENSUS.

At all centres the attendance for census revision was good, but the writer had to send some ten people into Ming for court as a result of not attending the census points and not having a good excuse for doing so.

TAX COLLECTION.

As this work is now conducted by the Council, the patrol was accompanied by a Council Clerk and a Tax Tribunal. Very few defaulters were sent into Ming for Court.

STATISTICS.

The previous census revealed a total of 14,720 persons in this area - 7,911 males and 6,809 females.

The new census revealed an increase of 803 people (or an increase of approximately 5.16%).

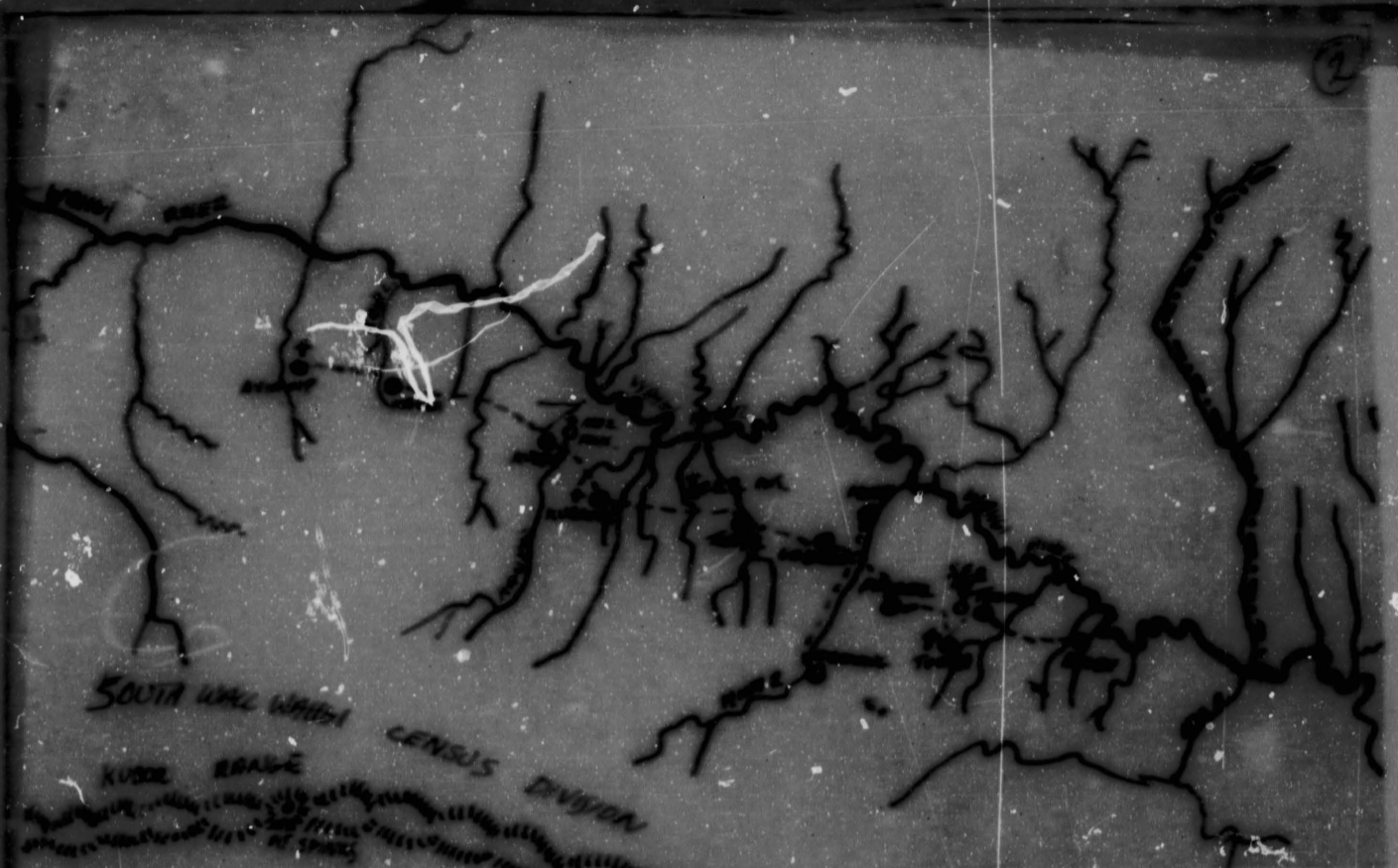
The new figures are at total of 15,523 consisting of 7,271 males and 8,252 females.

CONCLUSION.

In all, the native situation in this area is good. No trouble, or anything to bring about future friction between the Europeans and local natives was seen by the writer.

P. Walsh

(P. WALSH)
CAMPT PATROL OFFICER.



SOUTH WALK WORTH
 KUDZ BRIDGE CENSUS DIVISION

MAP ACCOMPANYING PATROL REPORT NO 2
 1964/65 (MAY)

PLANNED
 [Handwritten scribble]

East Number

SCALE 1:1000
 5 METERS
 1 CM = 5 METERS
 1:1000
 5 METERS
 1 CM = 5 METERS

2

RFR:JW

WD520

Department of District
Administration,
NORTH HAGEN. U.R.D.

14th September, 1965.

The Director,
Department of District Administration,
KORORUA.

MINI PATROL REPORT No. 3-6/65
NORTH WANGI WALL CENSUS DIVISION MINI
SUB-DISTRICT

I am forwarding Patrol Report for the above area.

The main information contained in this report is
the village population registers.

(T.M. ELLIS) *fm*
District Commissioner

67-14-24

28th September, 1965.

District Commissioner,
Western Highlands District,
MT. HAGEN.

MINI PATROL REPORT NO. 1-64/65:

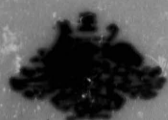
Receipt is acknowledged with thanks of Patrol Report by Mr. Walsh, covered by your memorandum WHD.920 of 14th September 1965.

2. Your comments and those of Messrs. Orwin and Trollope have been noted.

3. Mr. Walsh seems to have accomplished the tasks set him and has written a fairly good report. On a patrol, an officer should make copious notes of observations of things happening from one village to the other, under the suggested headings found on pages 32 to 44 of the Standing Instructions handbook. Then at the completion of the patrol, the process of composing the report from these notes is made ever so easy.

4. The efforts of the Numbakora, Nilep and Korus people in constructing an access road is praiseworthy. These people must have learned that self help is a good thing.

(P.G. Aitchison)
A/DIRECTOR.



TERRITORY OF PAPUA AND NEW GUINEA

(14)

Telegram
Telephone
Our Reference WED 520
If calling ask for
No.



Department of District
Administration,
HOVEN WANGI. W.H.D.

14th September, 1965.

The Director,
Department of District Administration,
HOVEN WANGI.

NEW PATROL REPORT No. 3-94/65
HOVEN WANGI WALL CENSUS DIVISION NEW
SUB-DISTRICT

I am forwarding Patrol Report for the above area.

The main information contained in this report is
the village population registers.

Y.W. Ellis
(Y.W. ELLIS) *Y.W.*
District Census Officer

= COPY -

67-1-3
67-1-4

Sub-District Office
MIRAJ
Western Highlands District

14th August, 1965.

The District Commissioner,
Western Highlands District,
MOUNT HAGEN.

PATROL Nos 2 & 3 of 1964/65 - MR. P.J. WALSH C.P.O.
NORTH & BORTH WALL WANGI CENSUS DIVISION

Forwarded please are copies of the above patrol reports
submitted by Mr. P.J. Walsh C.P.O.

Mr. Orwin A.P.C. had commented on these reports and
their forwarding was delayed by census statistics compilation
apparently.

For your information please.

C.A. Brollope
Assistant District Commissioner

Att:



DC *Diary* (12)
TERRITORY OF PAPUA AND NEW GUINEA

Telephone
Telegrams
Our Reference: 67-1-4.
If calling ask for
No.

Sub-District Office,
Western Highlands,
MIM.

1st June, 1965.

The District Commissioner,
Western Highlands District,
MOUNT HAGEN.

PATROL - 1-24/65 - NORTH WALL WAHGI CENSUS DIVISION.
(PART ONE.)

Attached please find 3 copies of Report by Mr. P. J. Walsh, Cadet Patrol Officer of a patrol to that portion of the North Wall Wahgi Census Division between KIKOWIL and MONGREL. Copies of Census figures for whole of Census Division for P.E.L., KoneJobu and claim for Camping Allowance are also attached.

Mr. Walsh accompanied the Local Government Clerk during the period of the patrol to further his field training commenced during his patrol to the South Wall Wahgi Census Division.

This report is well set out and gives a clear picture of the situation in the area.

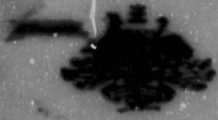
The matter of bride price has been, and is still being, taken up by the Local Councils in an effort to clarify this situation.

Mr. G. Dick, Agricultural Officer is posted to Mongrel where he is responsible for the development of the Mongrel Land Reclamation scheme. His progress reports to this office indicate a very keen desire on the people's part to enter economic activity in the production of tea and much work in the preliminary clearing of the blocks concerned has been done.

At present investigations are being carried out by D.D.A. Officers from Mim with regards to additional land offered for sale these people for further development of the tea industry in the area.

The new road reported on is a good example of the people's keenness to have economic activity progress in their area. It is hoped to have a grader available at a future date to grade this road. WAGSOP Council has already allocated funds for the gravelling and building of bridges along its length. On completion this road will allow access to the centre of the population in this area with mutual benefits both to the people and European coffee buyers and purchasers of native foods.

[Signature]
(P. G. CRUTE)
ASSISTANT DISTRICT COMMISSIONER.



TERRITORY OF PAPUA AND NEW GUINEA

11

Telegram
Telephone 67-1-2
Our Reference
If calling ask for
No.

Sub-District Office,
Western Highlands,
MIFJ.

15th February, 1965.

Mr. P. J. Walsh,
Cadet Patrol Officer,
MIFJ.

PATROL - NORTH WALL WAHGI CENSUS DIVISION.

On completion of patrol to South Wall Wahgi Census Division, which is to commence on 22nd February, 1965, please make further arrangements to accompany the Local Government Clerk whilst he is collecting Tax in the area from KEROWIL through to WONDUEL.

Your instructions will be the same as contained in my 67-1-2 of even date with regards to the South Wall Wahgi patrol. Copies of Census figures for the villages from KIBEL to KEROWIL are to be obtained from the Local Government Council Clerk to complete final figures for this Census Division.

(R. G. ORWIN)
ASSISTANT DISTRICT COMMISSIONER.

Sub-District Office,
MINJ.

30th April, 1965.

The Assistant District Commissioner,
Sub-District Office,
MINJ.

PATROL DIARY MINJ NO. 3 - 1964/65.

NORTH WALL WAHGI CENSUS DIVISION.

Enclosed is the patrol diary for a tax/census patrol in the North Wall Wahgi. For further details consult my Field Journal Police No. 14 to 17 and paragraphs 85 to 100.

Thursday 25th March. Departed Minj for Numbakora 1600 hours. Slept NUMBAKORA.

Friday 26th March. At NUMBAKORA until 1000 hours and then departed for MILEP rest-house arrived 1400 hours. Heavy rain soon after arrival postponed census work. Slept MILEP.

Saturday 27th March. At MILEP. Worked on census revision with Local Government Assistant. During afternoon worked on village books and heard petty complaints.

Sunday 28th March. At MILEP. Rested.

Monday 29th March. Departed for KONUM rest-house. Worked on census revision at KONUM. Slept KONUM.

Tuesday 30th March. At KONUM until 0730 hours, departing for KANIN Rest-house. Worked on census revision on the 3 lines here and departed for BANANA Rest-house at 1200 hours. Slept BANANA.

Wednesday March 31th. At BANANA until 1200 hours working on census revision. Then departed for MUMUMUL Rest-house. Work on statistics and heard petty complaints. Slept MUMUMUL.

Thursday 1st April. At MUMUMUL. Worked on census. Compiled statistics. Worked on village books. Slept MUMUMUL.

Friday 2nd April. Departed MUMUMUL for NONDUGL Aid Post. At NONDUGL, worked on census figures. Slept NONDUGL.

Saturday 3rd April. At NONDUGL, compiling census statistics. Heard some petty complaints. Slept NONDUGL.

Sunday 4th April. At NONDUGL. Rested.

Monday 5th April. Departed for KOMBULNA Rest-house. Worked on census revision and village books. Slept KOMBULNA.

- Tuesday 6th April. At KOMBULNA. Worked on census statistics. Heard petty complaints. Slept KOMBULNA.
- Wednesday 7th April. Departed for DOMIL Rest-house. Census revised. Village books finalized. Compiled census statistics. Slept DOMIL.
- Thursday 8th April. At DOMIL. Census statistics compiled. Heard petty complaints whilst waiting for transport to Minj. Slept DOMIL.
- Friday 9th April. At DOMIL until 1000 hours. Then departed for Minj per track. Patrol completed.

End of Patrol Diary.

File: 67-1-4

Sub-District Office,
Western Highlands,
MINJ.

7th May, 1965.

The Assistant District Commissioner,
Sub-District Office,
MINJ.

PATROL REPORT MINJ NO. 3 - 1964/65.

NORTH WALL WAHGI CENSUS DIVISION.

INTRODUCTION.

The area patrolled was a section of the North Wall Wahgi Census Division of the Minj Sub-District. This patrol, lasting some two weeks, was a continuation of a Tax/census patrol of the South Wall Wahgi Census Division. (See Patrol Report Minj No. 2 1964/65).

The purposes of the patrol was (a) Census Revision
(b) Tax Collection
(c) Routine Administration

The writer, on this patrol, was assisted in the work of census revision by the Local Government Assistant (NGANGAMP W.L.G. Council), Mr. L. Asimba.

NATIVE AFFAIRS.

The area patrolled is administered ^{stated} at the village level by councillors of the NGANGAMP W.L.G. Council. All told, they achieve a lot, for the native situation in the area is very good.

At all centres, the patrol was greeted with enthusiasm, evident by large supplies of food presented to the patrol. These presentations were accompanied by speeches by leading "dignitaries" on how pleased they were to see the patrol etc.; but in the writer's opinion this was merely a formality.

One problem which is tending to become serious in this area (as well, as the South Wall Wahgi area) is the problem of bride price.

Today, young women largely marry men of their own choice; consequently, the amount to be paid for bride price has risen considerably. Whilst on patrol, many complaints stemming from other the inability or the refusal to pay the high bride price, were brought to the writer for arbitration.

Nothing can be really done to solve this problem, for a system of limiting the amount to be paid for the bride price would be impracticable.

VILLAGE OFFICIALS.

The officials in this area are all councillors of the NGANGAMP W.L.G. Council.

As this was the first time the writer has worked with these people, it would not be possible to form a good opinion.

ROADS AND BRIDGES.

The area patrolled is served by the main vehicular road, the Highlands Highway. This road, except for one section (The Al river cutting) is a good, all weather road.

The writer left the main road at Kerowil, and proceeded along a new road being built by the people of NUMBAKORA, MIFIK, KOFOR and KAMIN Rest Houses. This road is being built for the express purpose of facilitating the movement of trucks through this area for buying coffee.

This venture is a good example of initiative on the part of these people. It was not surveyed, only marked out with pegs; and there is only one police constable, there to supervise road work. The road branches off at Kerowil and comes out at KOFUMUL. Once gravel is laid on it and the road is conditioned by traffic, this road will greatly help future patrols of any Department through this area.

Little need be said about bridges in this area, for they are all serviced by the P.W.D. and thus, with the use of proper equipment, are kept in good condition.

REST HOUSES.

All the rest-houses used by the writer whilst on patrol were in good repair. Only one group was told to repair a rest house; in this case, at NUMBAKORA where the PIT-PIT floor needed renovating.

LAW AND JUSTICE.

Many petty complaints ranging from complaints stemming from bride price (refer to Native Affairs) to petty debts and cases of unfaithful wives were brought before the writer for settlement by arbitration outside court.

The most numerous cases were those concerning bride price complaints; in some case bride price had not been paid for ten years.

Petty debts and pig thefts, case of compensation for damage to gardens by both pig and human agencies were second only in number to the above trouble.

One case of serious assault at KOMBULMA, and a few serious case of theft were sent to King for investigation by the O.I.C. Police.

MISSIONS.

There are two main missions in this area conducted by the Lutheran Church and the Roman Catholic Church. The former has its station at Banz whilst the latter has its at PATIMA and at KONDUGL. Both conduct schools and hospitals and the Lutheran Mission at Banz seems an Agricultural school.

Both churches have many centres throughout the area named only by native staff.

EUROPEANS.

There are eight plantations in this area. This is the main field in which Europeans work in this area. As well, there are the Missions, various stores, coffee buying and at KONDUGL, the Hallstrom Trust.

TAX COLLECTION.

As this work is now done by the Council, the patrol was accompanied for the purpose by a Council Clerk and tax-Tribunal.

CENSUS.

At all centres, there was good attendance for census revision. Very few cases of people not attending and failing to have a good reason for doing so, were come across.

STATISTICS.

The increase of the last 2 years from the previous census was 143 - or an increase of 0.95 percent.

The new population figures are : Total population - 15,580, made up of 8,137 males and 7,443 females.

P. Salazar

(P. SALAZAR)
CAROL PATROL OFFICER.

6

APPENDIX "A".

AGRICULTURE AND LIVESTOCK.

Agriculture practised in this area is still predominately on a subsistence basis. The small garden plots one sees whilst travelling through this area will remain a feature of the landscape for a long time to come.

Various crops are raised, the main ones being sweet potatoes, corn, bananas and peanuts. European type crops grown also by these people include lettuce, cabbage, tomatoes and potatoes, to name only a few.

Cash cropping in the North Wall Wabgi Census division is based on coffee production. A new and important project coming into existence at Nondugi, envisages the production of tea and also the processing of the same at Nondugi.

A large area of land has been set aside for the actual production of this crop by the local people. To help them in the processing of it, the Administration is in the process of buying a large block of land on which to establish a tea processing factory. This venture, if successful will greatly increase the finance coming into the area.


(P. WALSH)
CANST PATROL OFFICER.

APPENDIX "B".

HEALTH.

The general health of the people in the area patrolled was good - very few cases of any types of sickness were seen. Whilst the writer was conducting the census revision, a agga-hoi from an Ai post was usually standing close to him to detect any sickness amongst the people.

A large number of well run Aid posts accommodate the people and hence prevalence of sickness is kept very low.

The writer looked through the various aid posts around this area and found them to be all in good order.

As well as the Government Aid posts, the mission run aid-posts and in some cases, minor hospitals, for their followers.

(R. WALSH)
CABINET PATROL OFFICER.

APPENDIX "C".

EDUCATION.

There is only one Government school in the area patrolled. This is the Primary "I" School which is situated at WONDIGL.

As well as this school there are the mission run schools to be found at Patina, Lams and Wondigl. The respective figures for the attendance at these different schools are as follows:

<u>Government School</u>		<u>Mission Schools.</u>	
<u>Male</u>	<u>Female</u>	<u>Male</u>	<u>Female</u>
176	20	622	222

P. Walsh

(P. WALSH)
CAPT PATROL OFFICER.

APPENDIX "D".

REPORT ON MEMBERS ROYAL PAPUAN, NEW GUINEA CONSTABULARY.

Reg. No. 5191B S/C GANIE.

Discipline. Very good.
Appearance. Always smart.
General Conduct. Excellent & very good N.C.O. for a new officer to take on first patrol.

Reg. No. 9459 Const. EKUMA.

Discipline. Good
Appearance. Smart
General Conduct. An always capable policeman.
Possible N.C.O. Material.

CONCLUSION OF REPORT.

In all the native situation throughout this area is very good. There is little trouble between the Europeans and indigenes. The main government station situated at Miritis in a good central position and thus is the node of the Sub-District. If any disputes or troubles flare up, the centre of trouble is within easy reach of any officers.

P. Walshe

(P. WALSHE)
CARET PATROL OFFICER.