

**REPORT AND INDEX OF  
UNDERWAY MARINE GEOPHYSICAL DATA**

**KIWI EXPEDITION**

**LEG 8**

**(KIWI08RR)**

**R/V Revelle**

**(Issued August 1998)**

**Ports:**

**Lyttelton, New Zealand (8 January 1998)**

**to**

**Lyttelton, New Zealand (8 February 1998)**

**Chief Scientist:**

**Kenneth Coale, Moss Landing Marine Lab.**

**email: coale@mml.calstate.edu**

**Gene Pillard, Resident Marine Technician**

**Marc Silver, Computer Technician**

**No SeaBeam/UW Processor on board**

**Post-Cruise Processing and Report Preparation by the  
Geological Data Center, Scripps Institution of Oceanography  
La Jolla, California 92093-0223**

***NOTE: This is an index of underway geophysical data edited and processed after the completion of the cruise leg and is intended primarily for informal use within the institution. This document is not to be reproduced or distributed outside Scripps without prior approval of the chief scientist or the Geological Data Center, Scripps Institution of Oceanography, La Jolla, California 92093-0223***

**GDC Cruise I.D.# 276**

**REPORT AND INDEX OF NAVIGATION  
AND UNDERWAY GEOPHYSICAL DATA**

Processed by the Geological Data Center  
Scripps Institution of Oceanography

**Contents:**

**Index Chart** - gives track of cruise leg, dates, ports, and mileage of each type of data collected.

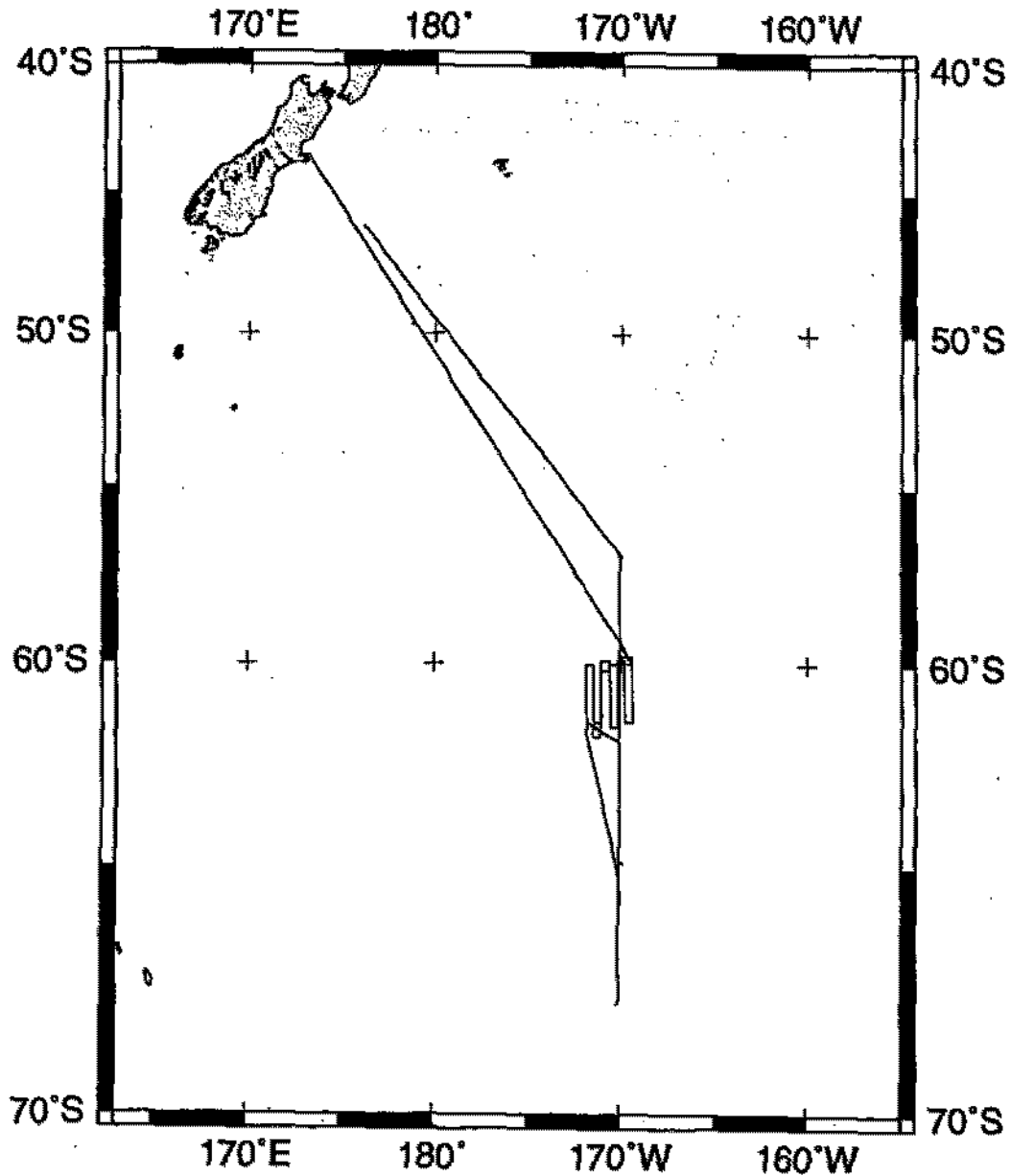
**Track Charts** - annotated with dates and hour ticks.

**Profiles** - depth, magnetic and gravity free air anomaly vs. distance. (Sections of track with seismic reflection data have a wide black line along the bottom of the profile.)

**Sample Index** - list of begin/end times and positions of all underway records as well as samples and measurements from other disciplines collected on the leg.

**NOTE:** One or more of the underway data types may not be collected on a given leg. For information on the availability and reproduction costs of data in the following forms, contact S.M. Smith, Curator, Geological Data Center, Scripps Institution of Oceanography, La Jolla, California 92093-0223. Phone: (619)534-2752, FAX: (619)534-6500, Internet email: ssmith@ucsd.edu

1. Files via ftp or on 8mm (Exabyte) and 4mm (DAT) magnetic tape:
  - a) Separate time series ASCII files of navigation, single beam depth, gravity and magnetics.
  - b) Above data in a single merged ASCII file in the MGD77 Exchange Format.
  - c) SeaBeam depth data (binary, Sun byte order)
  - d) SeaBeam Sidescan data.
2. Microfilm (35 mm flowfilm) or hard copies of:
  - a) Underway watch log book.
  - b) SeaBeam vertical beam profile/Sidescan records.
  - c) 3.5 kHz and 12 kHz echosounder records.
  - d) Seismic reflection profiler records.
3. Navigation listing with times and positions of fixes and course and speed changes.
4. Custom plots in Mercator projection:
  - a) Track plots.
  - b) SeaBeam depth contour plots.
  - c) Depth, magnetic or gravity values printed or profiled along track.



**KIWI EXPEDITION LEG 8**

**CHIEF SCIENTIST:** Kenneth Coale, Moss Landing Marine Lab.

**PORTS:** Lyttelton - Lyttelton, New Zealand

**DATES:** 08 January - 08 February 1998

**SHIP:** R/V Reville

**TOTAL MILEAGE OF UNDERWAY DATA COLLECTED**

**Cruise - 5343 miles**

**Magnetics - none collected**

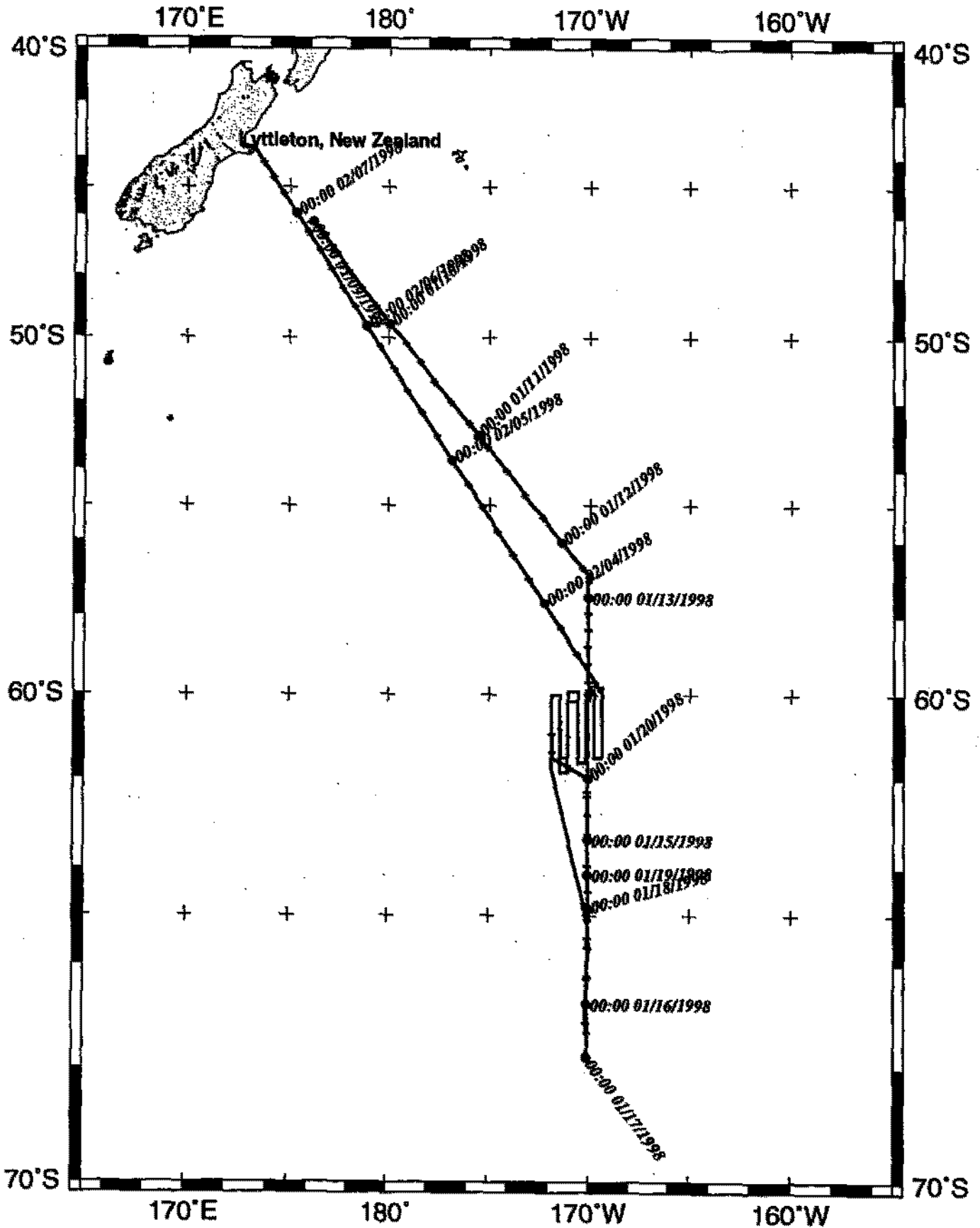
**Bathymetry - 1536 miles**

**Seismic Reflection - none collected**

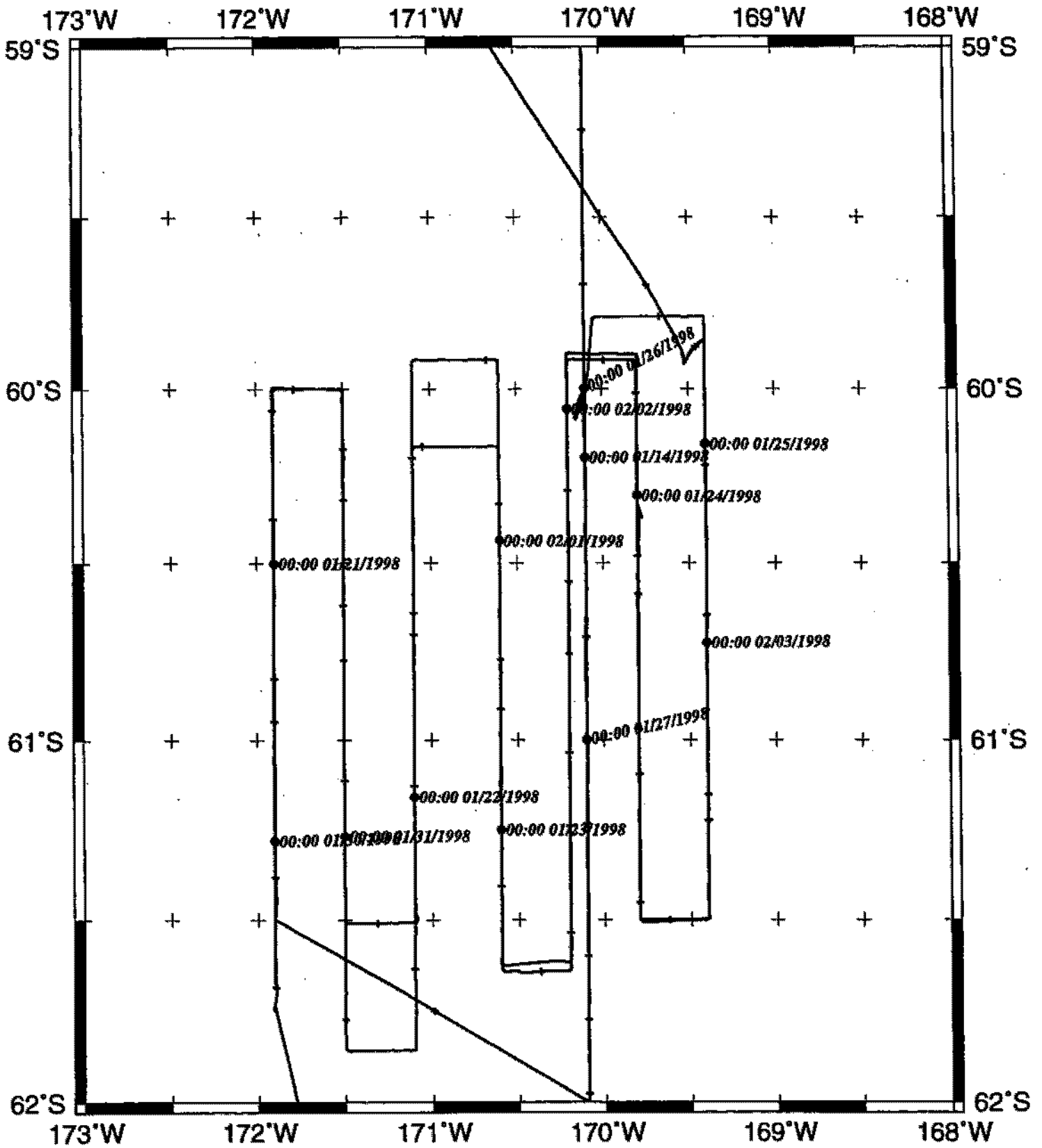
**Sea Beam - 1536 miles**

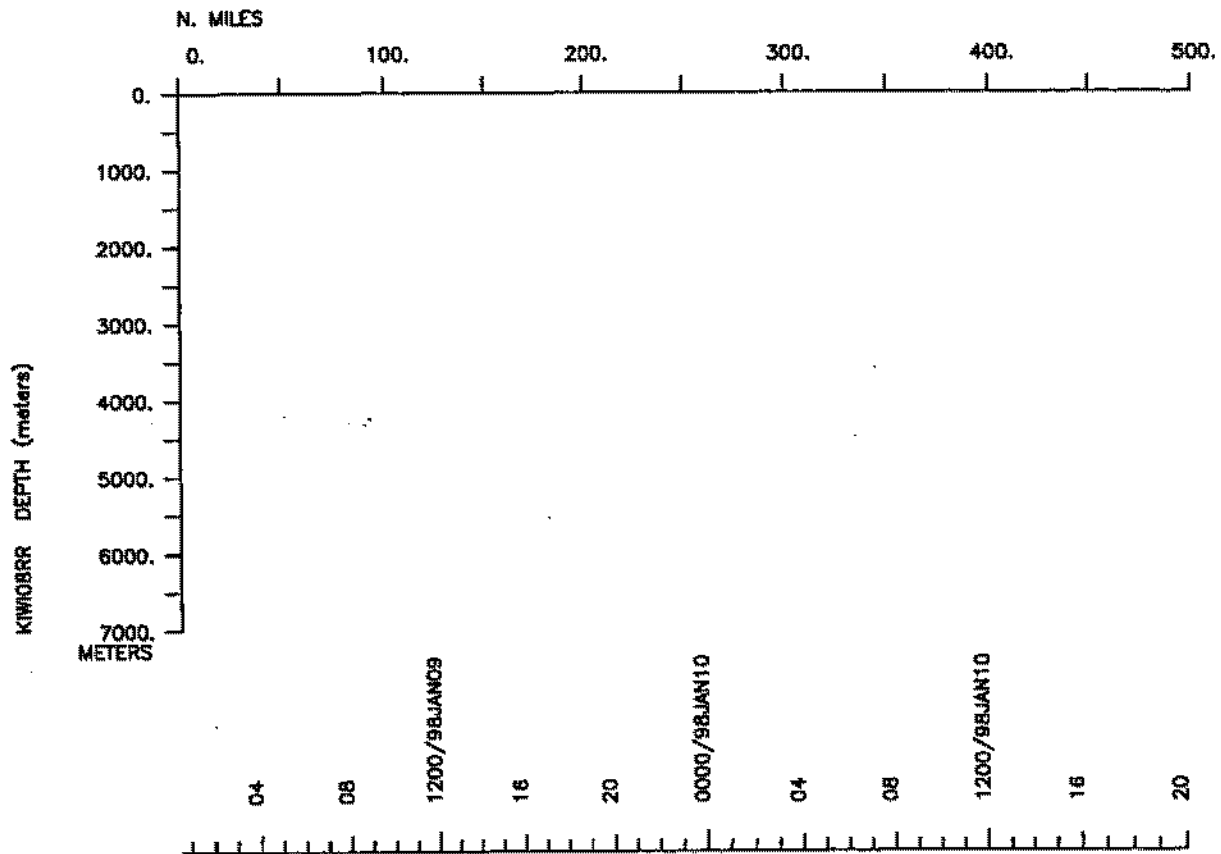
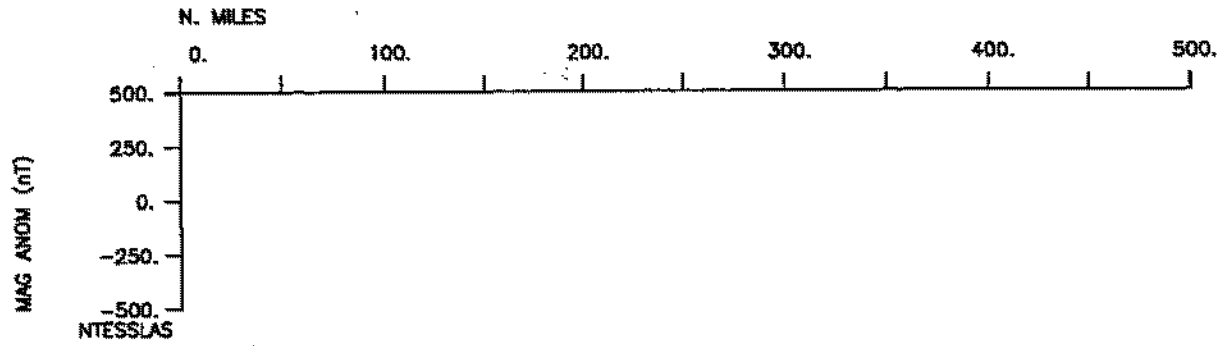
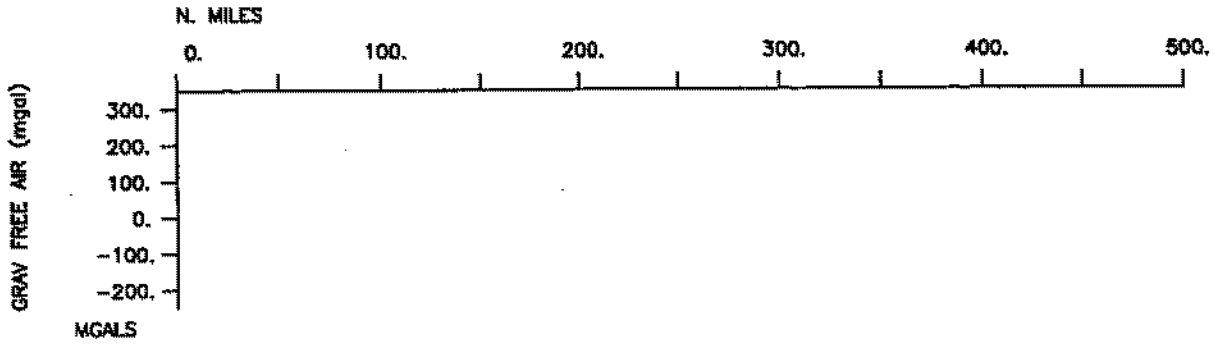
**Gravity - none collected**

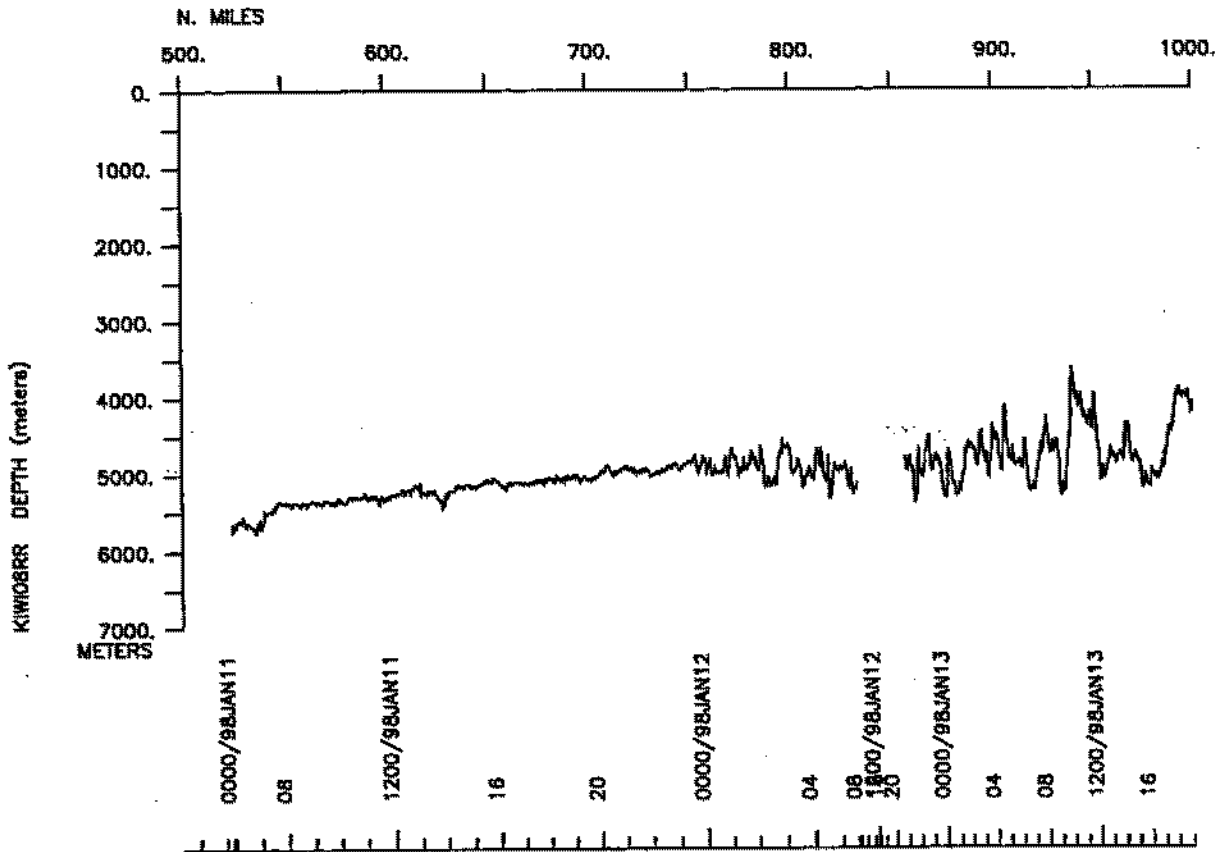
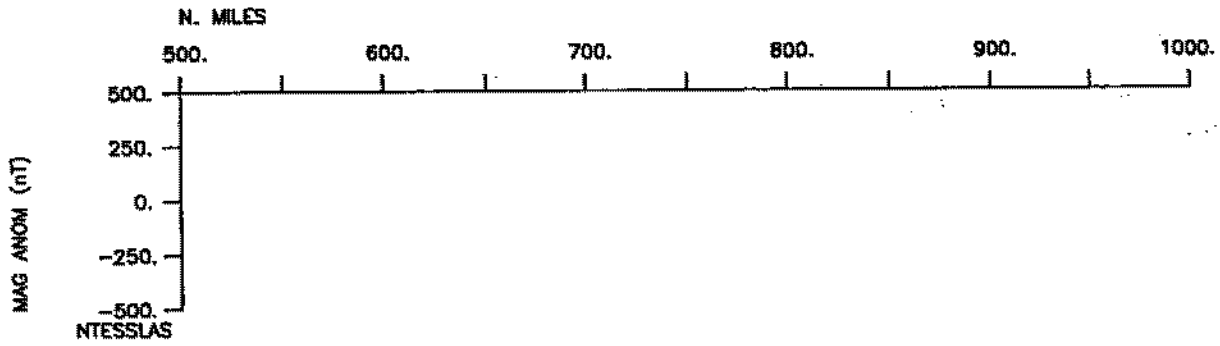
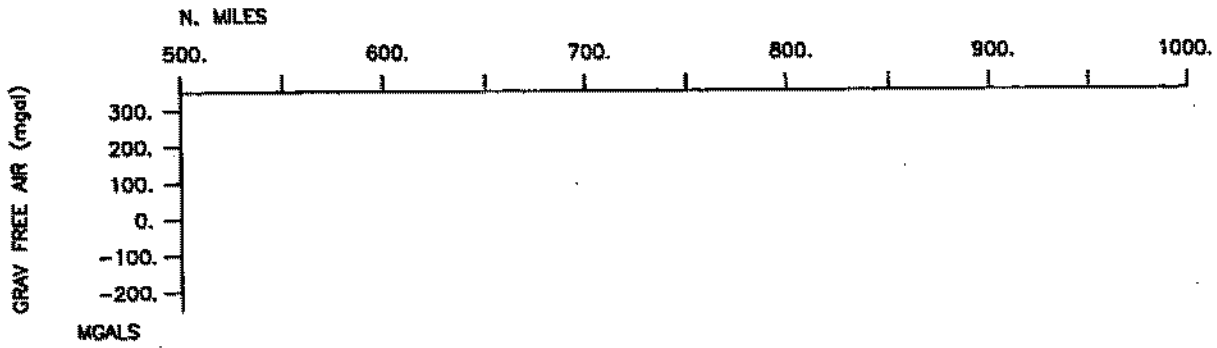
# KIWI08RR Track

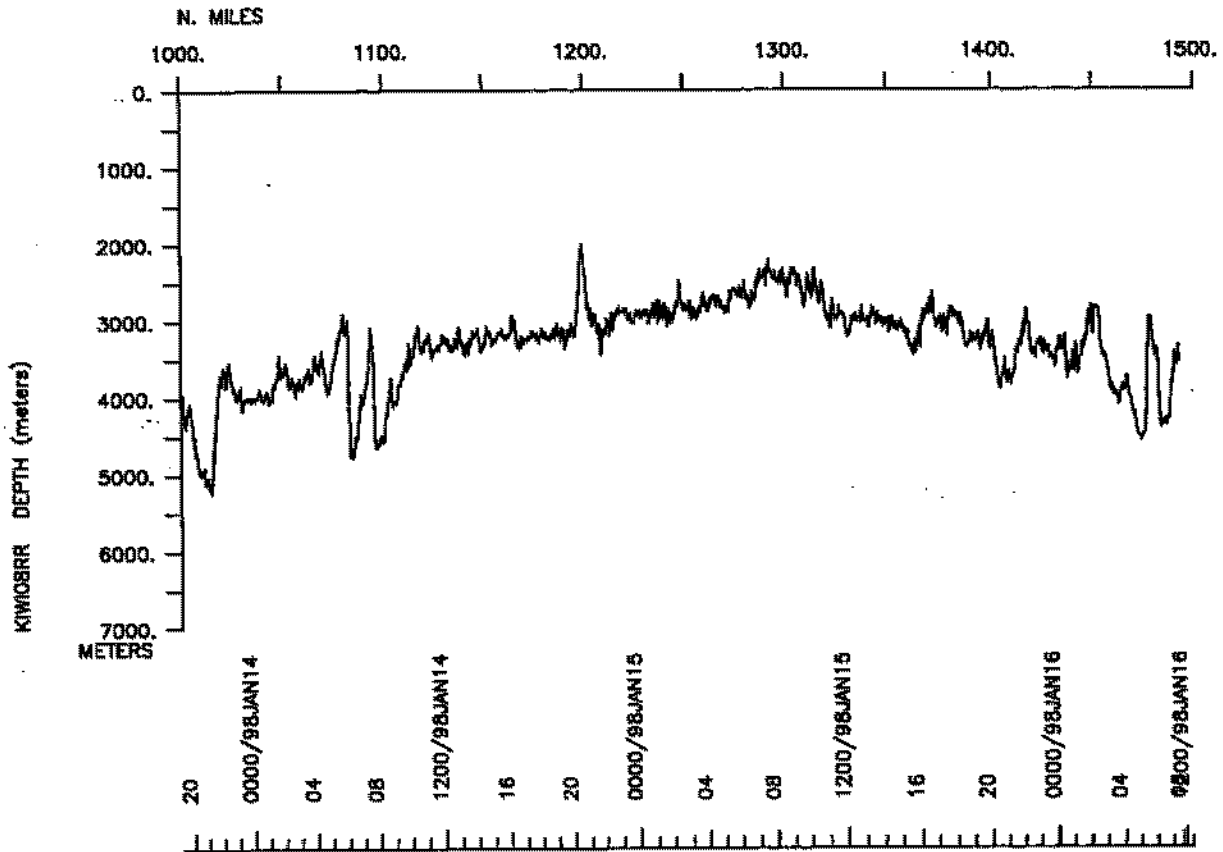
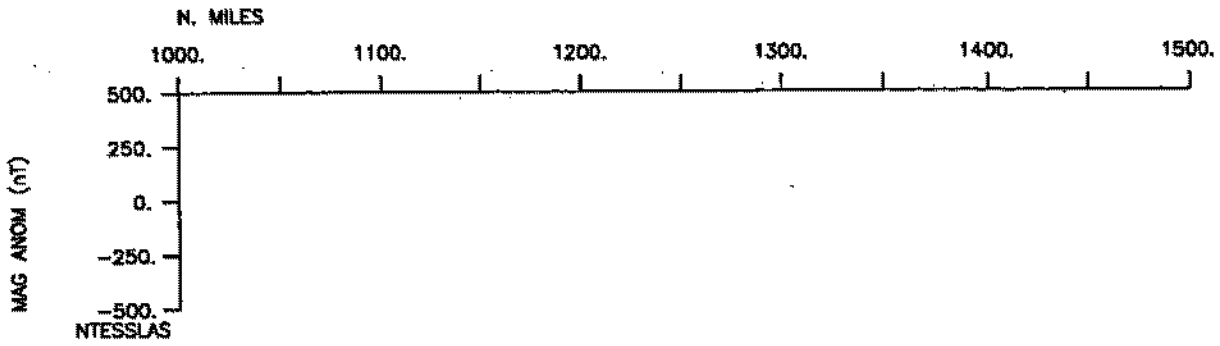
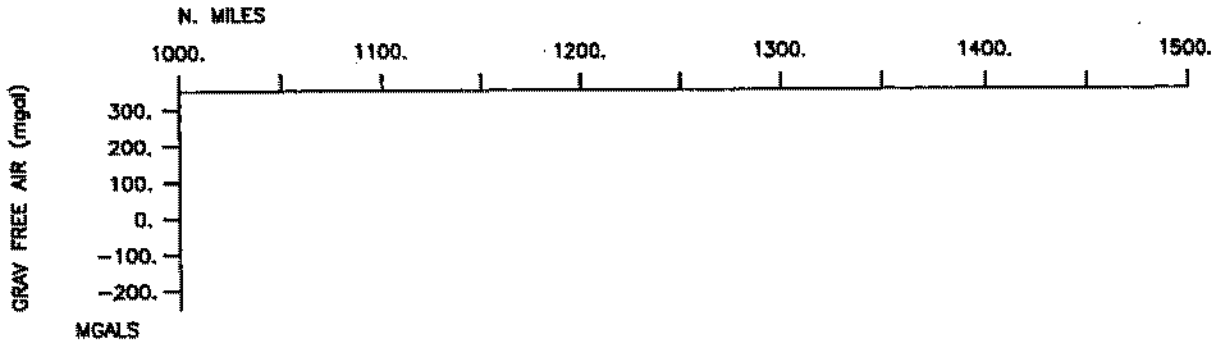


# KIWI08RR Survey1

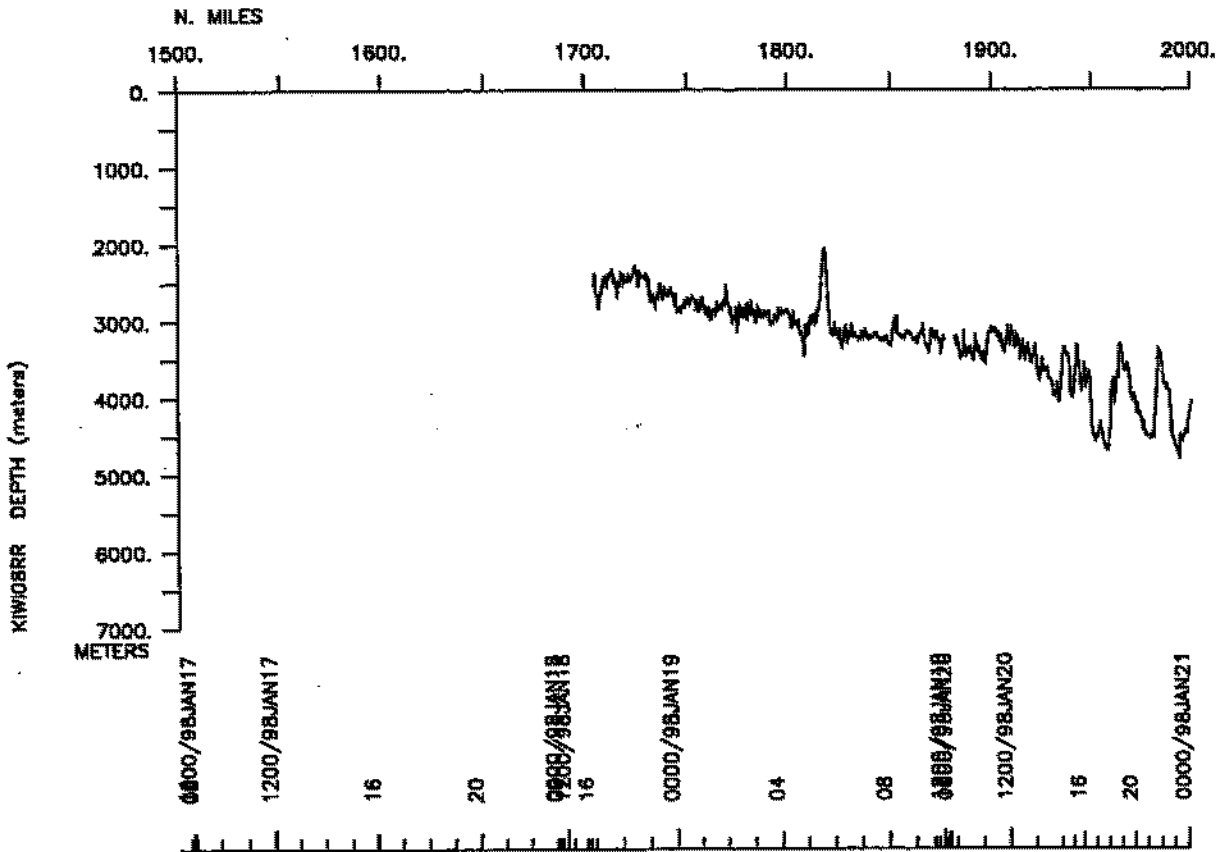
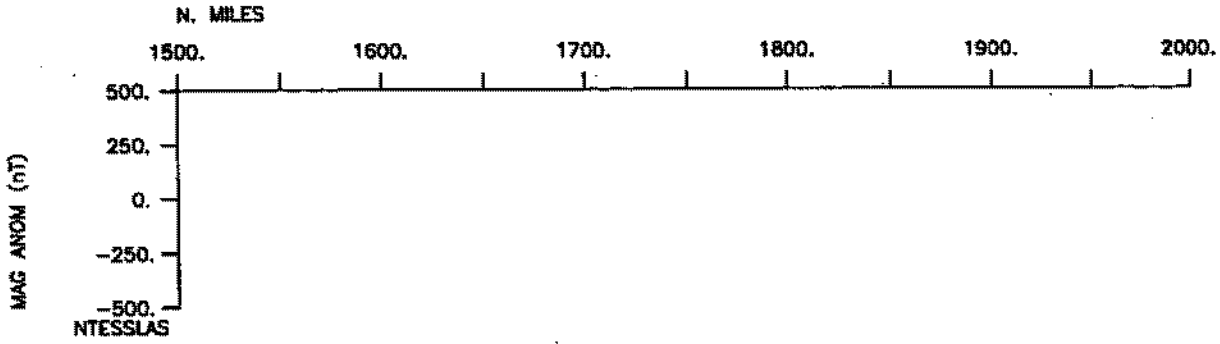


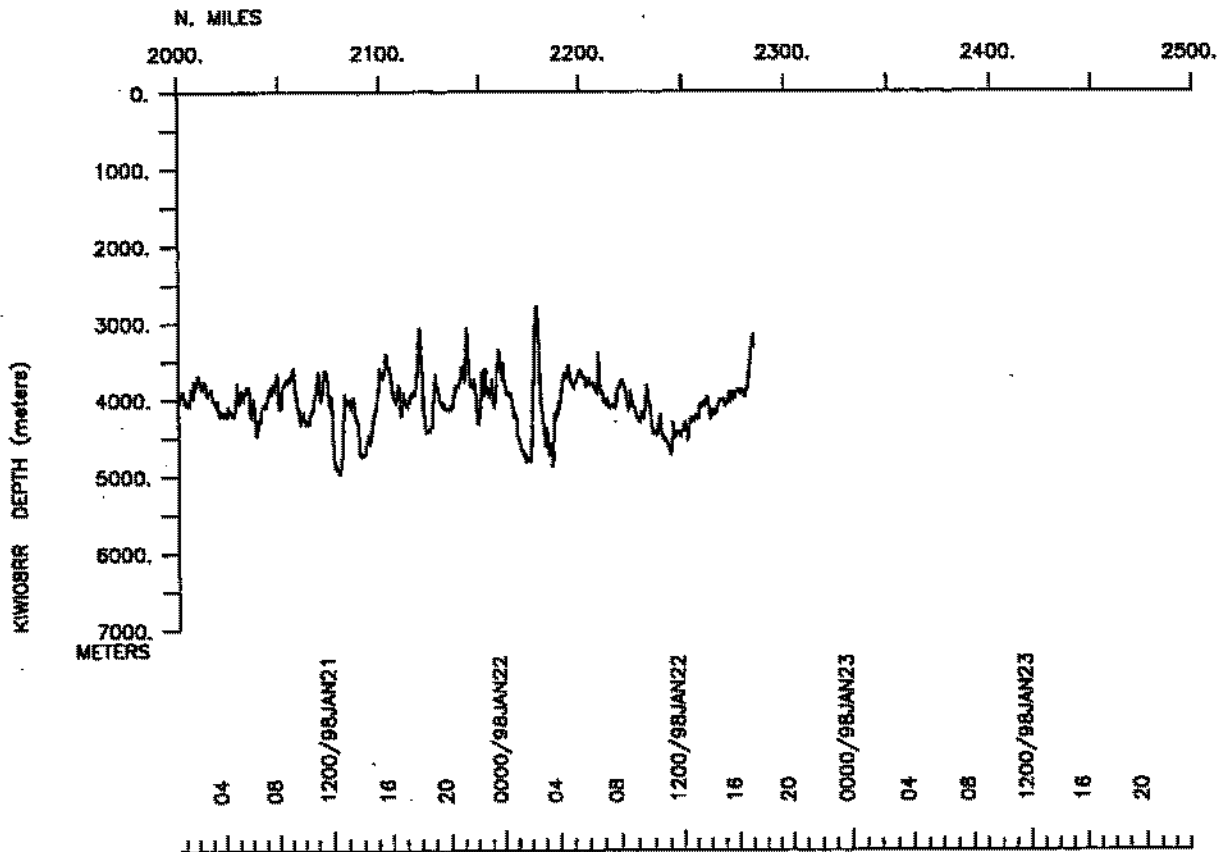
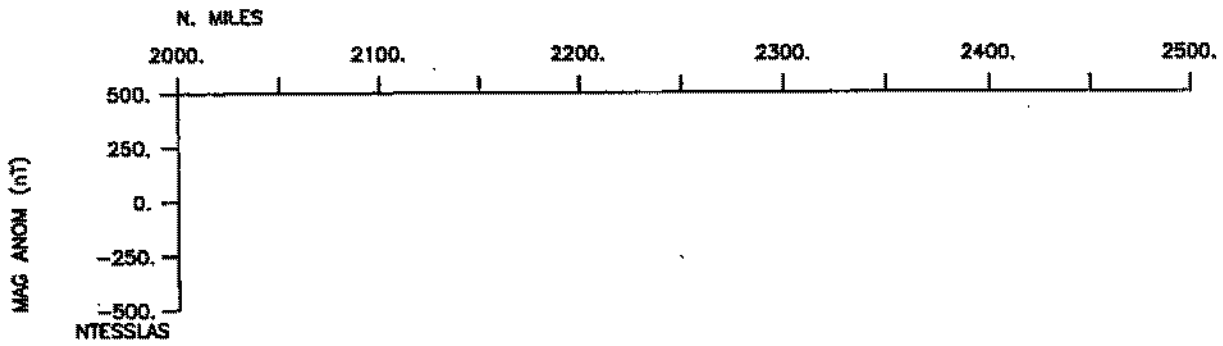
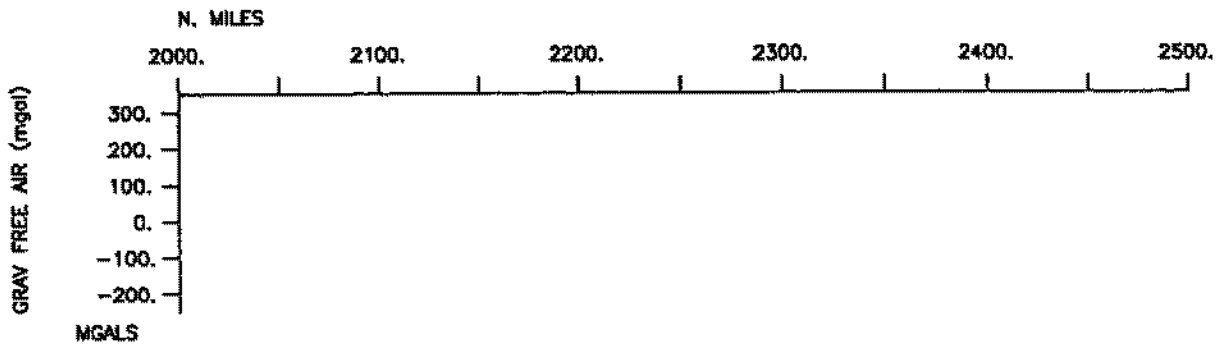


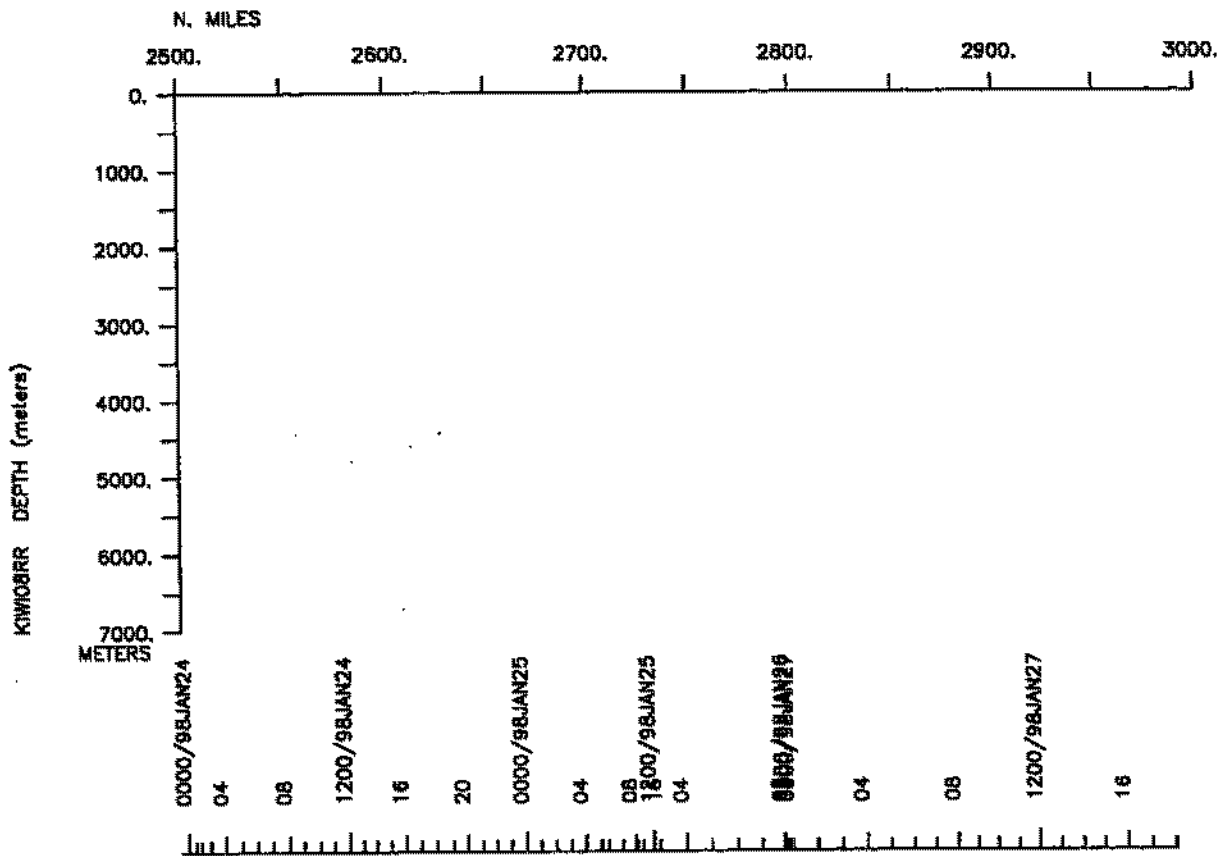
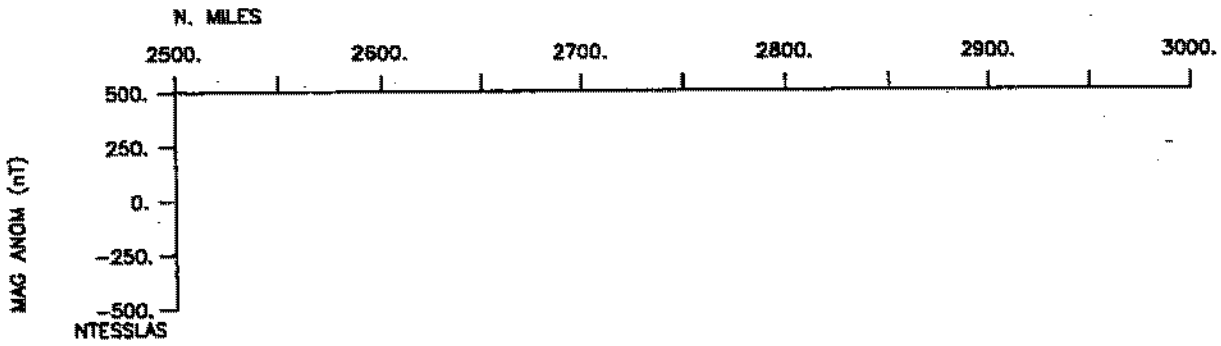
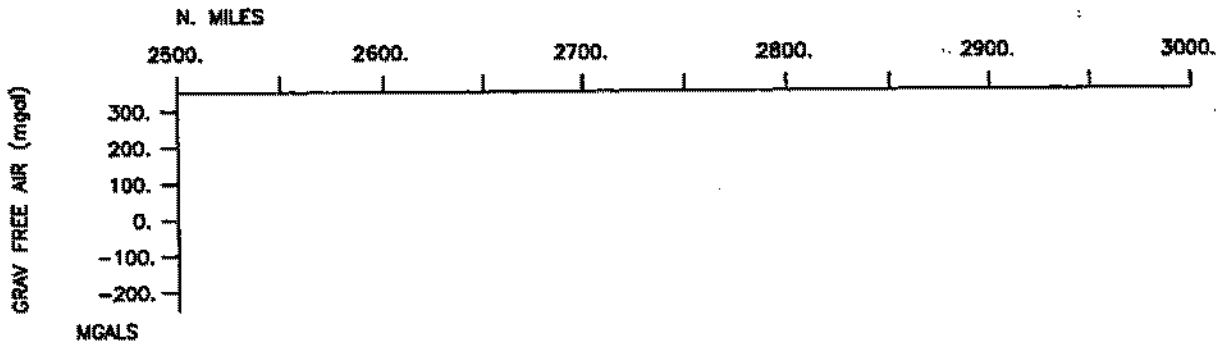


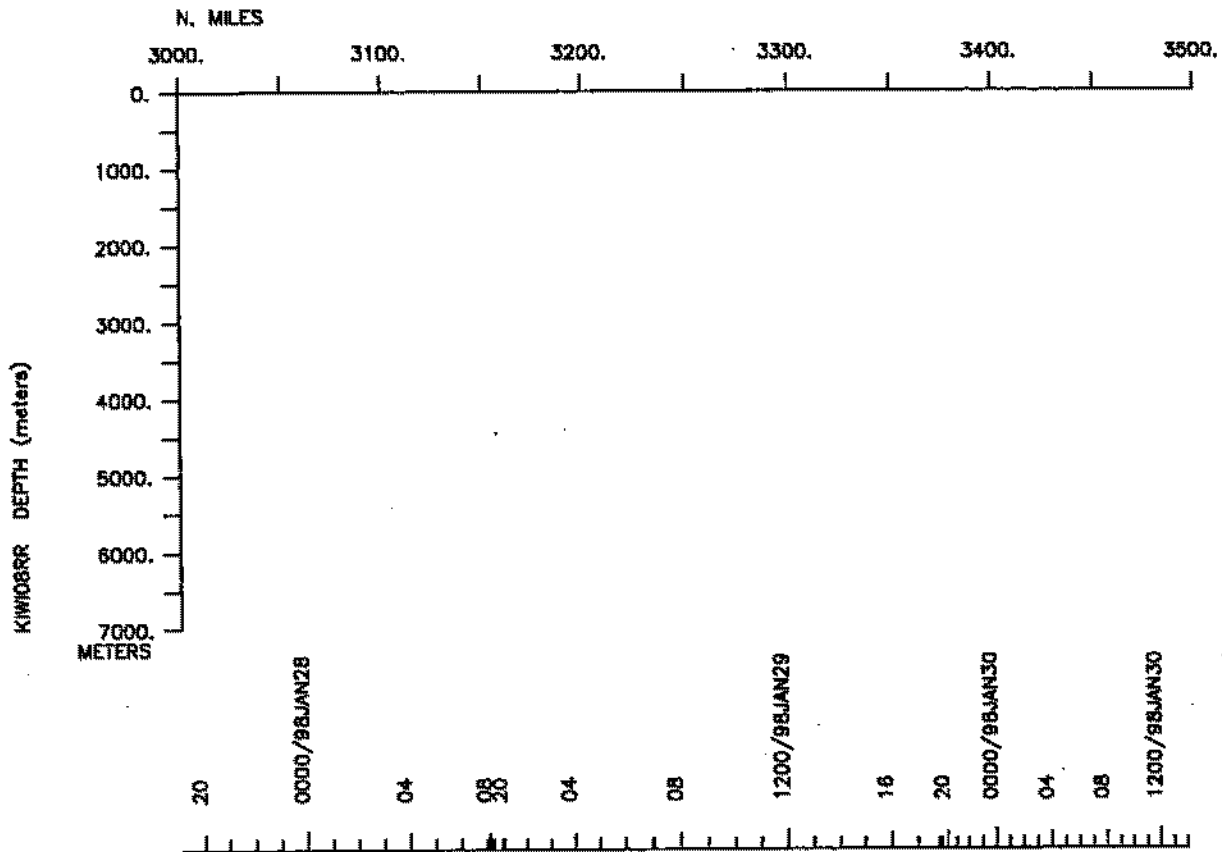
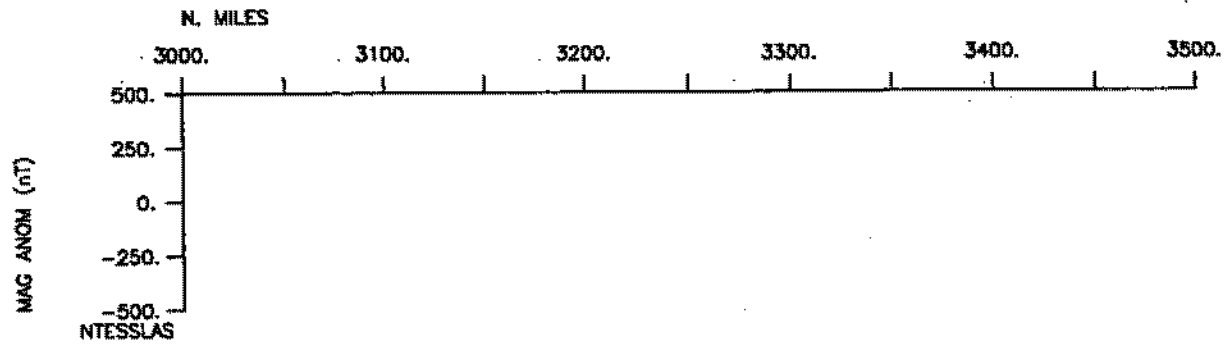
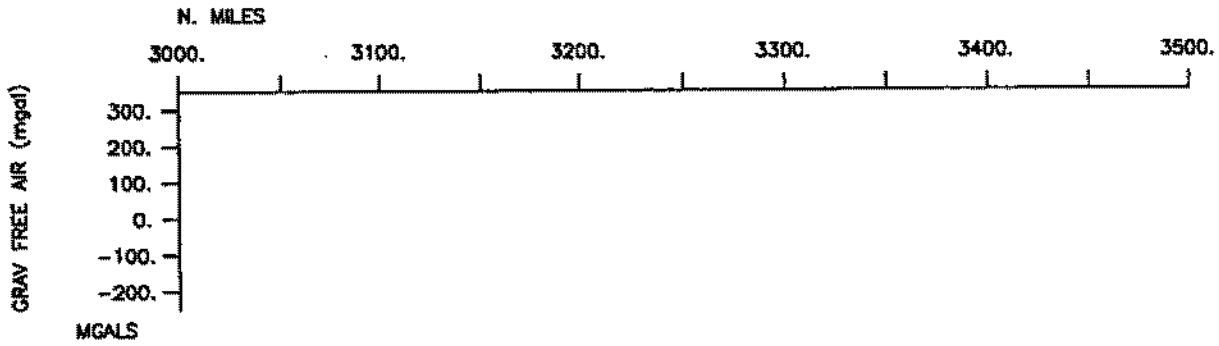


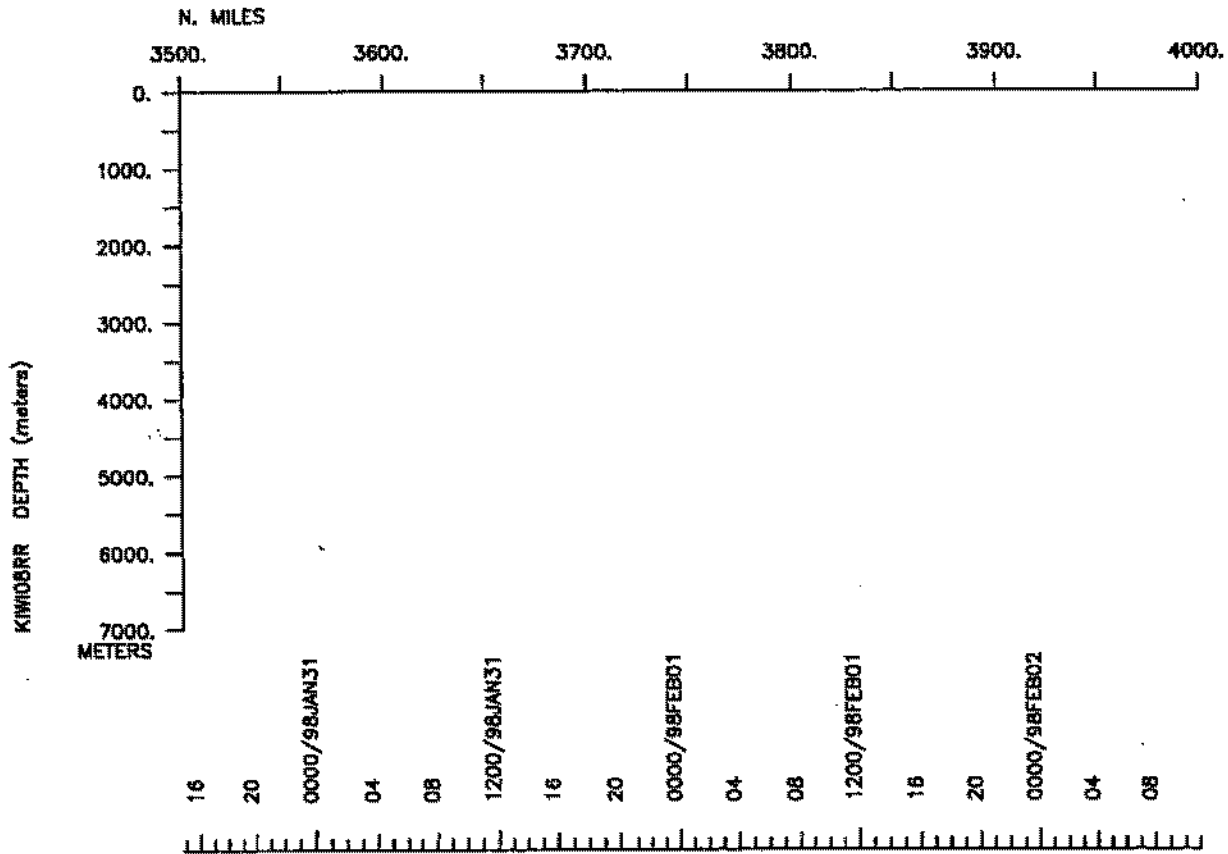
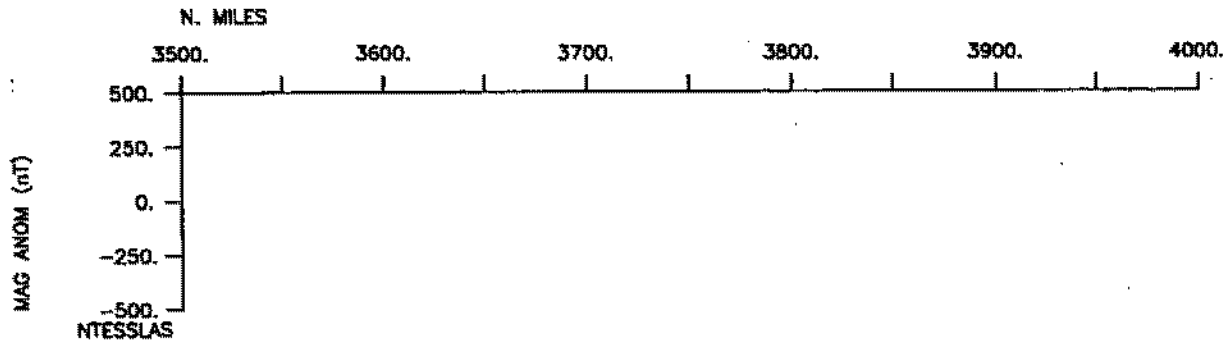
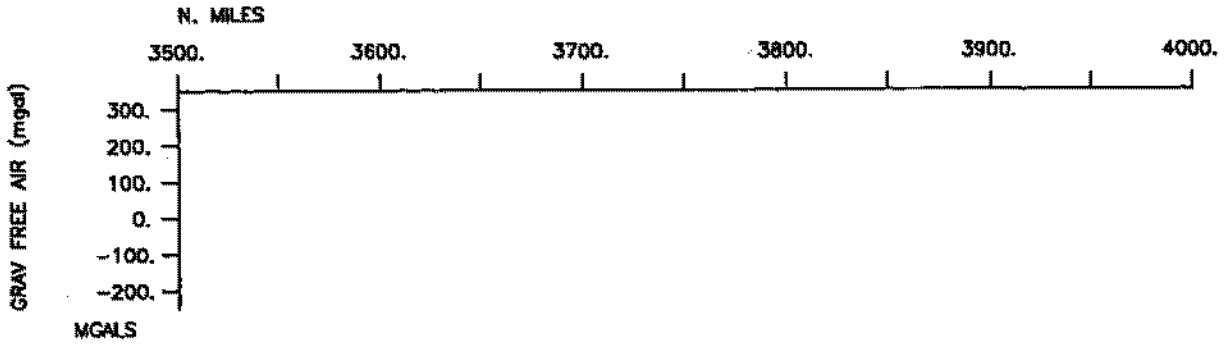


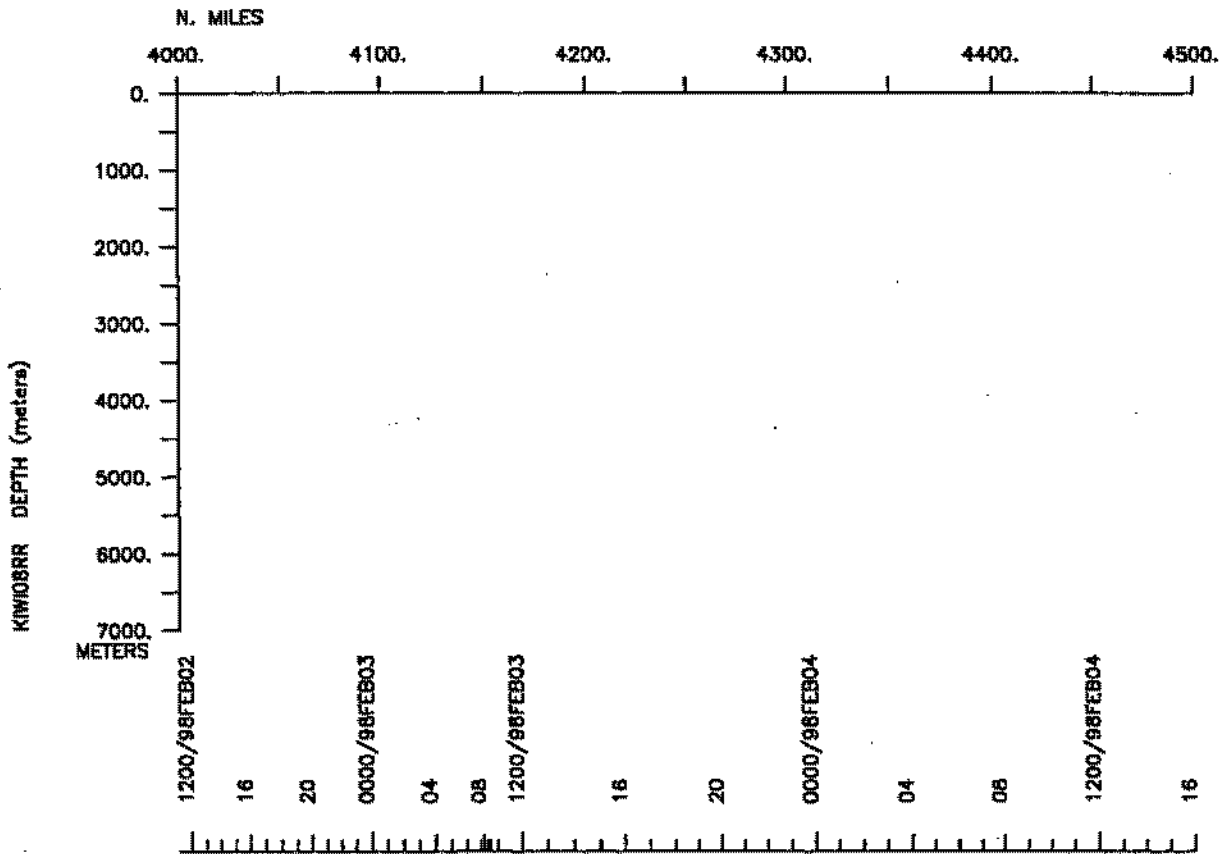
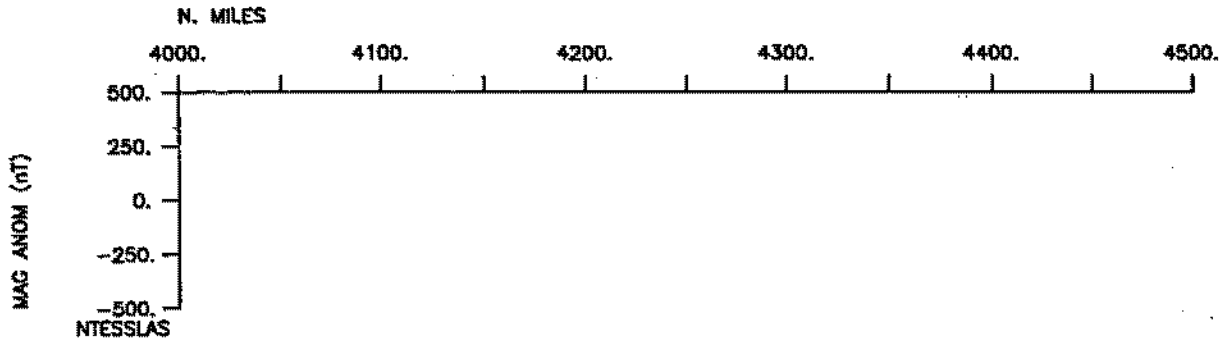
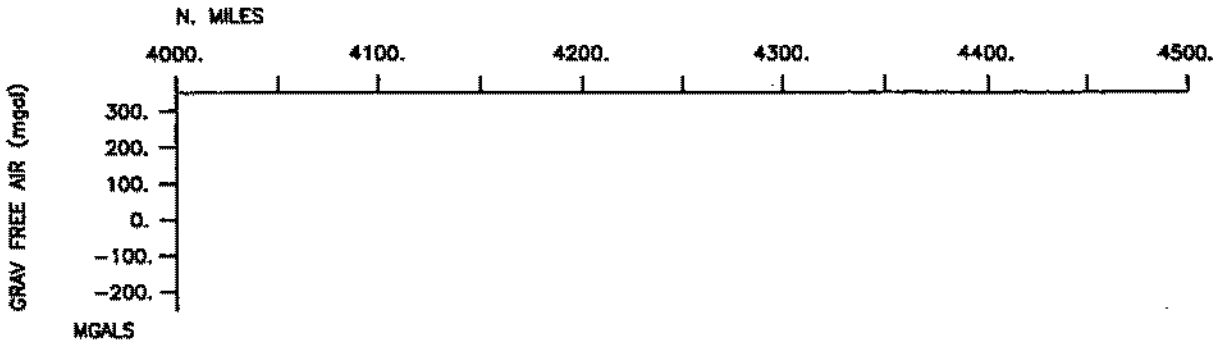


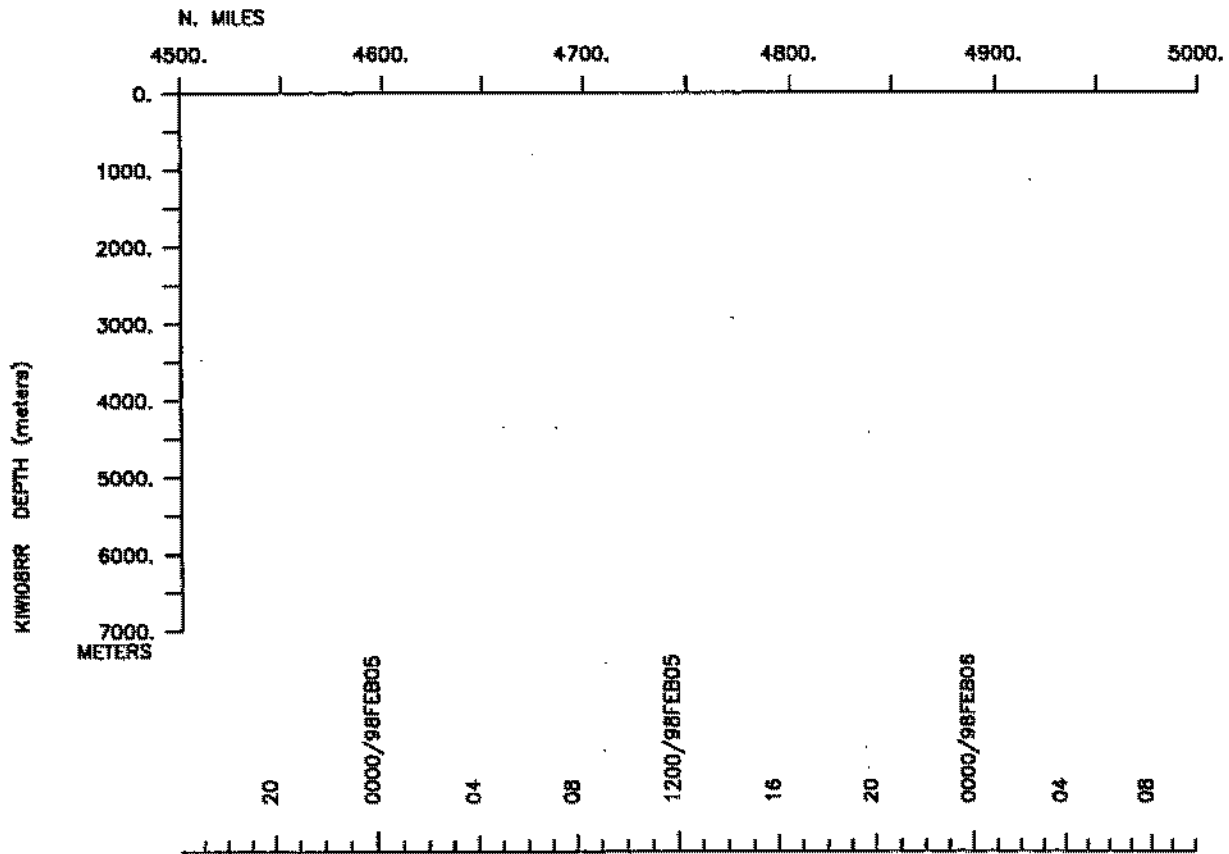
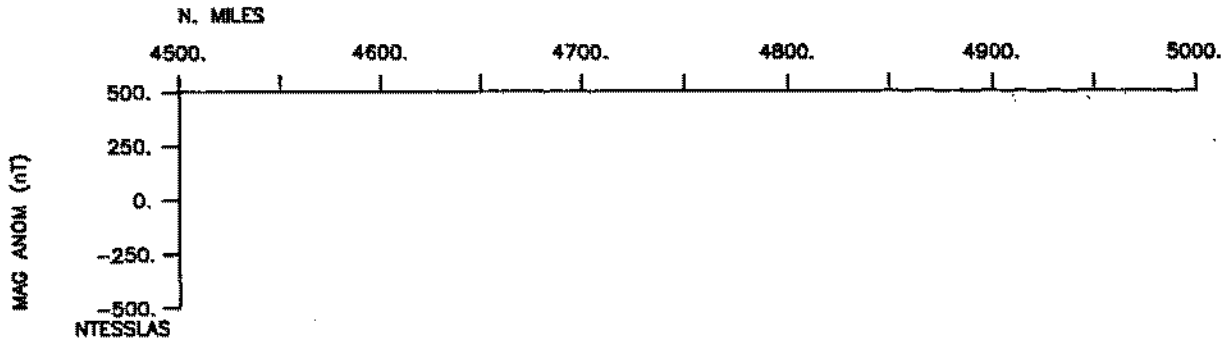
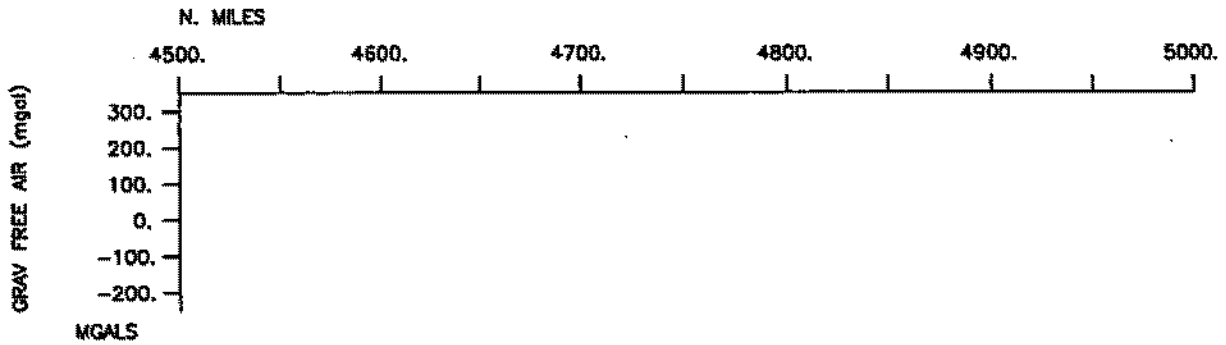


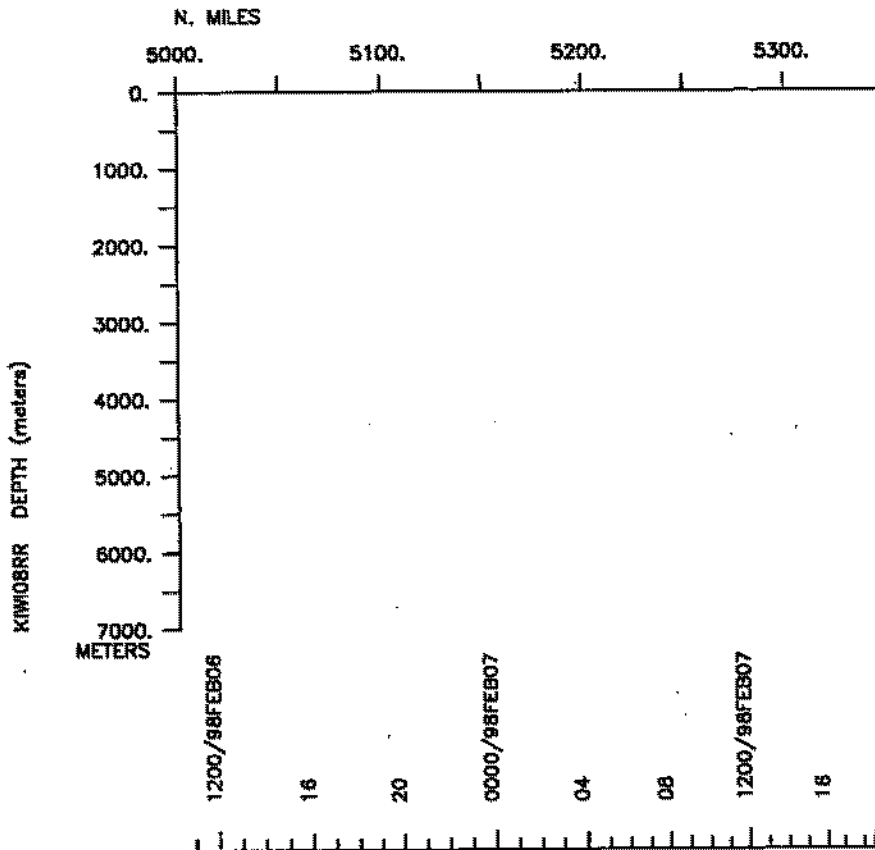
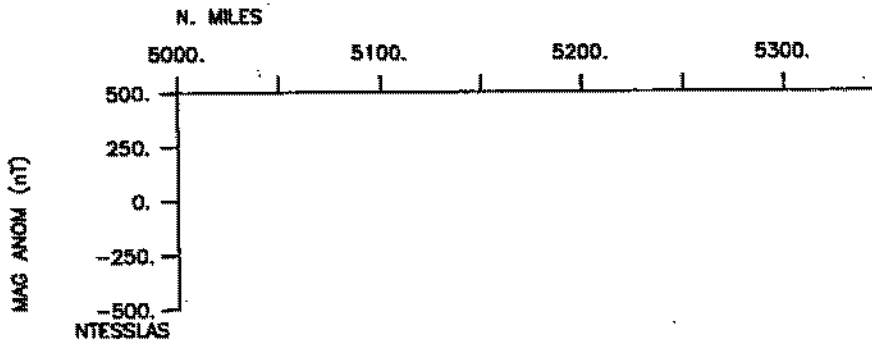
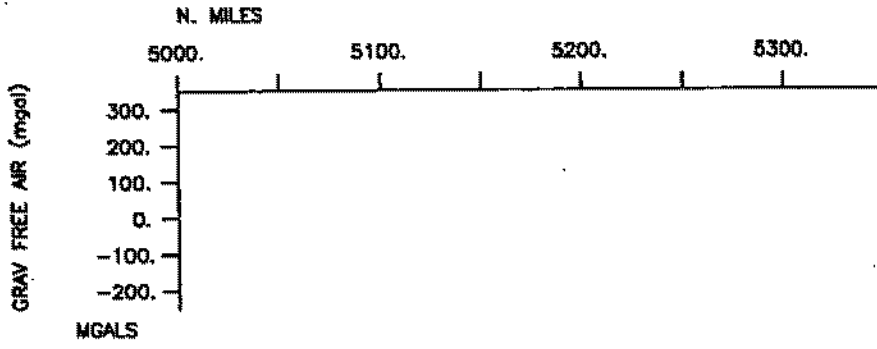














**S.I.O. SAMPLE INDEX**

**KIWI EXPEDITION**

**LEG 8**

**(KIWI08RR)**

**R/V Reville**

**(Issued August 1998)**

**Ports:**

**Lyttelton, New Zealand (8 January 1998)**

**to**

**Lyttelton, New Zealand (8 February 1998)**

**Chief Scientist:**

**Kenneth Coale, Moss Landing Marine Lab.**

*The Sample Index is a first level interdisciplinary listing of time, position, sample identification and disposition of all samples, records and measurements collected on this cruise leg. The index data are encoded at sea by the resident marine technician and processed on shore by the S.I.O. Geological Data Center shortly after the completion of the cruise leg.*

*Positions are interpolated on the basis of sample time by comparison to a single, edited navigation file. Samples beginning at one time and position and ending at another are entered on two consecutive lines. Disposition and sample type are represented by three and four character codes to permit future computer searches on these parameters. (Listings defining these codes are available from the Geological Data Center.)*

**GDC Cruise I.D.# 276**

\*\*\*\* Ports \*\*\*\*

0300 080198-11 LGPT B Lyttelton, New Zealand 43-36.00S 172-43.00E f KIWI08RR  
 1900 080298-11 LGPT E Lyttelton, New Zealand 43-36.00S 172-43.00E f KIWI08RR

\*\*\*\* Personnel \*\*\*\*

#	*****NAME*****	*****TITLE*****	*****AFFILIATION*****	**CRID**
PECS SIX	Coale, Kenneth	Chief Scientist	Moss Landing Mar.Lab	KIWI08RR
PESP SIX	Altabet, Mark	Scientist	Univ. Mass.Dartmouth	KIWI08RR
PESP STS	Becker, Susan	Research Assist.	Scripps Institution	KIWI08RR
PESP UCSD	Bichnevicius, B.	Research Assist.	Scripps Institution	KIWI08RR
PEST UHI	Brown, Susan	Graduate Student	Univ. of Hawaii	KIWI08RR
PESP OSU	Dale, Andrew	Technician	Oregon State Univ.	KIWI08RR
PESP WHOI	Eischeid, Greg	Scientist	Woods Hole O.I.	KIWI08RR
PESP LDEO	Esmay, Rebecca	Technician	Lamont Doherty E.O.	KIWI08RR
PESP OSU	Fayler, Linda	Research Assist.	Oregon State Univ.	KIWI08RR
PESP SIX	Feng, Huan	Scientist	Stonybrook Univ.	KIWI08RR
PESP SIX	Fitzwater, Steve	Technician	Moss Landing Mar.Lab	KIWI08RR
PEST UCSB	Franck, Valerie	Grad Student	U.C. Santa Barbara	KIWI08RR
PESP SIX	Goldthwait, Sarah	Research Tech.	Bermuda Bio. Station	KIWI08RR
PESP UCSB	Golden, William	Research Assist.	U.C. Santa Barbara	KIWI08RR
PEST MBRD	Gonzales, Alejandro	Graduate Student	Scripps Institution	KIWI08RR
PESP SIX	Gordon, Michael	Research Assoc.	Moss Landing Mar.Lab	KIWI08RR
PESP SIX	Haskins, John	Research Assist.	Moss Landing Mar.Lab	KIWI08RR
PESP SIX	Hirschberg, Dave	Scientist	Stonybrook Univ.	KIWI08RR
PESP SIX	Kinder, Jeff	Research Assist.	N.Carolina State U.	KIWI08RR
PESP UHI	Landry, Mike	Scientist	Univ. of Hawaii	KIWI08RR
PESP OSU	Litelier, Ricardo	Scientist	Oregon State Univ.	KIWI08RR
PESP STS	Lopez, Leonard	Research Assist.	Scripps Institution	KIWI08RR
PESP STS	Masten, Doug	Research Assist.	Scripps Institution	KIWI08RR
PEST UHI	McDonough, Kendra	Grad Student	Univ. of Hawaii	KIWI08RR
PEST OSU	Mengelt, Claudia	Grad Student	Oregon State Univ.	KIWI08RR
PEVL UHI	Nunnery, Scott	Volunteer	Univ. of Hawaii	KIWI08RR
PESP OSU	O'Malley, Robert	Research Assist.	Oregon State Univ.	KIWI08RR
PESP STS	Palomares, Rob	Technician	Scripps Institution	KIWI08RR
PERT STS	Pillard, Gene	Resident Tech	Scripps Institution	KIWI08RR
PEST LDEO	Rubin, Stephany	Grad Student	Lamont Doherty E.O.	KIWI08RR
PECT STS	Silver, Marc	Computer Tech	Scripps Institution	KIWI08RR
PESP OSU	Shearman, R. Kipp	Research Assist.	Oregon State Univ.	KIWI08RR
PESP UHI	Vink, Sue	Scientist	Univ. of Hawaii	KIWI08RR
PESP MRD	Wieland, John	Research Assist.	Scripps Institution	KIWI08RR
PESP OSU	Willis, Marc	Chief Technician	Oregon State Univ.	KIWI08RR
PESP OSU	Wingard, Chris	Technician	Oregon State Univ.	KIWI08RR

\*\*\*\* NOTES \*\*\*\*

#An 'X' in the (B)egin/(E)nd column following the sample code indicates no  
 #sample or data recovered. A 'C' indicates continuation of data collection  
 #from before the beginning or after the end of a particular leg. (Moored  
 #bottom instruments, for example.) The number appearing in the columns  
 #between the sample identifier and the disposition code, for many sample  
 #entries, is the water depth in corrected meters.

#GMT	DDMMYY	SAMP	B	SAMPLE	DISP				p	CRUISE
#TIME	DATE	TZ	CODE	E IDENTIFIER	CODE	LATITUDE	LONGITUDE		c	LEG-SHIP
#	-----									
#*** Underway Data Curator - S. M. Smith ext. 42752 ***										
#*** Log Books ***										
0500	070198	0	LBSC	B Hydro data log	WHOI	46-11.52S	176-08.76E	g		KIWI08RR
1900	070298	0	LBSC	E Hydro data log	WHOI	43-36.39S	172-43.18E	g		KIWI08RR
				MBSR R-01						
#*** Current Meters ***										
1527	210198		CMRT	B DrogueBuoy #43	OSU	61-02.89S	171-29.93W	g		KIWI08RR
1900	070298		CMRT	C DrogueBuoy #43	OSU	43-36.00S	172-43.00E	f		KIWI08RR
1529	210198		CMRT	B DrogueBuoy #89	OSU	61-03.13S	171-29.93W	g		KIWI08RR
1900	070298		CMRT	C DrogueBuoy #89	OSU	43-36.00S	172-43.00E	f		KIWI08RR
1531	210198		CMRT	B DrogueBuoy #44	OSU	61-03.36S	171-29.94W	g		KIWI08RR
1900	070298		CMRT	C DrogueBuoy #44	OSU	43-36.00S	172-43.00E	f		KIWI08RR
1533	210198		CMRT	B DrogueBuoy #88	OSU	61-03.59S	171-29.94W	g		KIWI08RR
1900	070298		CMRT	C DrogueBuoy #88	OSU	43-36.00S	172-43.00E	f		KIWI08RR
1538	210198		CMRT	B DrogueBuoy #46	OSU	61-04.18S	171-29.93W	g		KIWI08RR
1900	070298		CMRT	C DrogueBuoy #46	OSU	43-36.00S	172-43.00E	f		KIWI08RR
2341	210198		CMRT	B DrogueBuoy #22	OSU	61-11.81S	171-05.98W	g		KIWI08RR
1900	070298		CMRT	C DrogueBuoy #22	OSU	43-36.00S	172-43.00E	f		KIWI08RR
0033	220198		CMRT	B DrogueBuoy #42	OSU	61-06.14S	171-05.93W	g		KIWI08RR
1900	070298		CMRT	C DrogueBuoy #42	OSU	43-36.00S	172-43.00E	f		KIWI08RR
0129	220198		CMRT	B DrogueBuoy #45	OSU	61-00.11S	171-05.98W	g		KIWI08RR
1900	070298		CMRT	C DrogueBuoy #45	OSU	43-36.00S	172-43.00E	f		KIWI08RR
0221	220198		CMRT	B DrogueBuoy #23	OSU	60-54.16S	171-06.03W	g		KIWI08RR
1900	070298		CMRT	C DrogueBuoy #23	OSU	43-36.00S	172-43.00E	f		KIWI08RR
0103	290198		CMRT	B DrogueBuoy #86	OSU	65-10.00S	170-06.00W	g		KIWI08RR
1900	070298		CMRT	C DrogueBuoy #86	OSU	43-36.00S	172-43.00E	f		KIWI08RR
#*** Conductivity, Temperature, Depth ***										
#*** SIX = Univ. of Massachusetts, Dartmouth ***										
2250	100198		TDCT	B TSONIC P G	BL SIO	53-00.00S	175-32.99W	g		KIWI08RR
2353	100198		TDCT	E 24 btl rosette	500M SIO	53-00.00S	175-32.99W	g		KIWI08RR
0016	110198		TDXX	B CDT, Fluorometer x2	OSU	53-00.00S	175-32.99W	g		KIWI08RR
0040	110198		TDXX	E Spectrophotometer	OSU	52-59.99S	175-33.00W	g		KIWI08RR
0225	110198		TDXX	B MER Optical Package	SIO	53-00.00S	175-32.99W	g		KIWI08RR
0302	110198		TDXX	E Transmissometer x2	SIO	53-00.00S	175-32.99W	g		KIWI08RR
0554	120198		TDCT	B N C&N Isotopes	SIX	57-00.00S	170-00.00W	g		KIWI08RR
0640	120198		TDCT	E 24 btl rosette 300M	SIX	57-00.00S	170-00.00W	g		KIWI08RR
0707	120198		TDCT	B TSONIC P G	BL UHI	57-00.00S	169-59.99W	g		KIWI08RR
0845	120198		TDCT	E 24 btl rosette	500M UHI	57-00.00S	170-00.00W	g		KIWI08RR
1800	120198		TDXX	B SeaSoar Spectrophoto	OSU	57-00.00S	170-05.90W	g		KIWI08RR
0740	160198		TDXX	E & Fluorometer & OPC	OSU	67-47.50S	170-06.20W	g		KIWI08RR

#GMT	DDMMYY	SAMP	B	SAMPLE	DISP				p	CRUISE
#TIME	DATE	TZ	CODE	E IDENTIFIER	CODE	LATITUDE	LONGITUDE		c	LEG-SHIP
#										
1623	160198		TDCT	B N C&N Isotopes	SIX	67-47.04S	170-06.71W	g		KIWI08RR
1720	160198		TDCT	E 24 btl rosette 300M	SIX	67-47.04S	170-06.72W	g		KIWI08RR
1740	160198		TDXX	B MER Optical Package	SIO	67-47.04S	170-06.72W	g		KIWI08RR
1807	160198		TDXX	E Transmissometer x2	SIO	67-47.04S	170-06.73W	g		KIWI08RR
1826	160198		TDCT	B TSONIC P G BL	SIO	67-47.04S	170-06.72W	g		KIWI08RR
1913	160198		TDCT	E 24 btl rosette 500M	SIO	67-47.04S	170-06.72W	g		KIWI08RR
2129	160198		TDXX	B CDT, Fluorometer x2	OSU	67-47.04S	170-06.72W	g		KIWI08RR
2215	160198		TDXX	E Spectrophotometer	OSU	67-47.04S	170-06.72W	g		KIWI08RR
2344	160198		TDXX	B MER Optical Package	SIO	67-47.05S	170-06.70W	g		KIWI08RR
0020	170198		TDXX	E Transmissometer x2	SIO	67-47.04S	170-06.72W	g		KIWI08RR
0035	180198		TDXX	B MER Optical Package	SIO	64-50.00S	170-06.00W	g		KIWI08RR
0110	180198		TDXX	E Transmissometer x2	SIO	64-41.28S	170-09.56W	g		KIWI08RR
1517	180198		TDCT	B N C&N Isotopes	SIX	64-49.99S	170-06.00W	g		KIWI08RR
1603	180198		TDCT	E 24 btl rosette 300M	SIX	64-49.99S	170-05.99W	g		KIWI08RR
1618	180198		TDXX	B MER Optical Package	SIO	64-50.00S	170-06.01W	g		KIWI08RR
1655	180198		TDXX	E Transmissometer x2	SIO	64-50.00S	170-05.98W	g		KIWI08RR
1712	180198		TDCT	B TSONIC P G BL	UHI	64-50.00S	170-06.00W	g		KIWI08RR
1802	180198		TDCT	E 24 btl rosette	UHI	64-49.99S	170-06.00W	g		KIWI08RR
1953	180198		TDXX	B CDT, Fluorometer x2	OSU	64-49.99S	170-05.99W	g		KIWI08RR
2028	180198		TDXX	E Spectrophotometer	OSU	64-50.00S	170-06.00W	g		KIWI08RR
1528	190198		TDCT	B N C&N Isotopes	SIX	62-00.00S	170-05.99W	g		KIWI08RR
1612	190198		TDCT	E 24 btl rosette 300M	SIX	62-00.00S	170-06.00W	g		KIWI08RR
1623	190198		TDXX	B MER Optical Package	SIO	62-00.00S	170-06.00W	g		KIWI08RR
1656	190198		TDXX	E Transmissometer x2	SIO	62-00.00S	170-06.00W	g		KIWI08RR
1714	190198		TDCT	B TSONIC P G BL	SIO	62-00.00S	170-06.00W	g		KIWI08RR
1810	190198		TDCT	E 24 btl rosette 500M	SIO	62-00.00S	170-05.99W	g		KIWI08RR
1918	190198		TDXX	B CDT, Fluorometer x2	OSU	62-00.00S	170-05.99W	g		KIWI08RR
1952	190198		TDXX	E Spectrophotometer	OSU	62-00.00S	170-06.00W	g		KIWI08RR
2133	190198		TDXX	B MER Optical Package	SIO	62-00.00S	170-06.06W	g		KIWI08RR
2200	190198		TDXX	E Transmissometer x2	SIO	62-00.00S	170-05.99W	g		KIWI08RR
0640	200198		TDCT	B TSONIC P G BL	UHI	62-00.00S	170-06.00W	g		KIWI08RR
0925	200198		TDCT	E 24 btl rosette 500M	UHI	62-00.00S	170-05.99W	g		KIWI08RR
1439	200198		TDXX	B SeaSoar Spectrophoto	OSU	61-28.90S	171-53.80W	g		KIWI08RR
0605	250198		TDXX	E & Fluorometer & OPC	OSU	59-48.00S	170-02.00W	g		KIWI08RR
1808	250198		TDCT	B N C&N Isotopes	SIX	60-00.00S	170-06.00W	g		KIWI08RR
1854	250198		TDCT	E 24 btl rosette 300M	SIX	60-00.00S	170-06.00W	g		KIWI08RR

#GMT	DDMMYY	SAMP	B	SAMPLE	DISP				p	CRUISE
#TIME	DATE	TZ	CODE	E IDENTIFIER	CODE	LATITUDE	LONGITUDE		c	LEG-SHIP
#										
1908	250198		TDXX	B MER Optical Package	SIO	60-00.00S	170-05.99W	g		KIWI08RR
1940	250198		TDXX	E Transmissometer x2	SIO	59-59.98S	170-05.99W	g		KIWI08RR
1959	240198		TDCT	B TSONIC P G	BL SIO	60-39.20S	169-24.05W	g		KIWI08RR
2040	250198		TDCT	E 24 btl rosette 500M	SIO	60-00.00S	170-05.99W	g		KIWI08RR
2138	250198		TDXX	B CDT, Fluorometer x2	OSU	60-00.00S	170-06.00W	g		KIWI08RR
2207	250198		TDXX	E Spectrophotometer	OSU	60-00.00S	170-06.00W	g		KIWI08RR
2210	250198		TDXX	B CDT, Fluorometer x2	OSU	60-00.00S	170-05.99W	g		KIWI08RR
2223	250198		TDXX	E Spectrophotometer	OSU	60-00.00S	170-06.00W	g		KIWI08RR
0000	260198		TDXX	B MER Optical Package	SIO	60-00.00S	170-06.00W	g		KIWI08RR
0032	260198		TDXX	E Transmissometer x2	SIO	60-00.00S	170-06.00W	g		KIWI08RR
0211	260198		TDXX	B CDT, Fluorometer x2	OSU	60-00.00S	170-06.00W	g		KIWI08RR
0245	260198		TDXX	E Spectrophotometer	OSU	60-00.00S	170-06.00W	g		KIWI08RR
1723	260198		TDCT	B N C&N Isotopes	SIX	60-59.99S	170-06.01W	g		KIWI08RR
1818	260198		TDCT	E 24 btl rosette 300M	SIX	61-00.01S	170-05.97W	g		KIWI08RR
1828	260198		TDXX	B MER Optical Package	SIO	61-00.01S	170-05.98W	g		KIWI08RR
1906	260198		TDXX	E Transmissometer x2	SIO	60-50.23S	170-06.23W	g		KIWI08RR
1916	260198		TDCT	B TSONIC P G	BL UHI	61-00.00S	170-06.00W	g		KIWI08RR
2016	260198		TDCT	E 24 btl rosette 500M	UHI	61-00.00S	170-06.00W	g		KIWI08RR
2107	260198		TDXX	B CDT, Fluorometer x2	OSU	61-00.00S	170-06.01W	g		KIWI08RR
2147	260198		TDXX	E Spectrophotometer	OSU	60-59.99S	170-06.01W	g		KIWI08RR
2308	260198		TDXX	B MER Optical Package	SIO	60-00.00S	170-05.99W	g		KIWI08RR
2348	260198		TDXX	E Transmissometer x2	SIO	61-00.00S	170-06.01W	g		KIWI08RR
1633	280198		TDCT	B N C&N Isotopes	SIX	65-09.99S	170-06.00W	g		KIWI08RR
1726	280198		TDCT	E 24 btl rosette 300M	SIX	65-10.01S	170-05.96W	g		KIWI08RR
1743	280198		TDXX	B MER Optical Package	SIO	65-10.01S	170-05.97W	g		KIWI08RR
1812	280198		TDXX	E Transmissometer x2	SIO	65-10.01S	170-05.85W	g		KIWI08RR
1822	280198		TDCT	B TSONIC P G	BL SIO	65-10.00S	170-05.97W	g		KIWI08RR
2038	280198		TDCT	E 24 btl rosette 300M	SIO	65-09.98S	170-05.97W	g		KIWI08RR
2144	280198		TDXX	B CDT, Fluorometer x2	OSU	65-10.00S	170-05.99W	g		KIWI08RR
2220	280198		TDXX	E Spectrophotometer	OSU	65-09.99S	170-05.98W	g		KIWI08RR
2325	280198		TDXX	B MER Optical Package	SIO	65-09.99S	170-05.99W	g		KIWI08RR
0001	290198		TDXX	E Transmissometer x2	SIO	65-09.99S	170-05.99W	g		KIWI08RR
1912	290198		TDXX	B SeaSoar Spectrophoto	OSU	61-45.00S	171-54.00W	g		KIWI08RR
0750	030298		TDXX	E & Fluorometer & OPC	OSU	59-52.60S	169-26.60W	g		KIWI08RR

#GMT	DDMMYY	SAMP	B	SAMPLE	DISP				p	CRUISE
#TIME	DATE	TZ	CODE	E IDENTIFIER	CODE	LATITUDE	LONGITUDE		c	LEG-SHIP
#										
#*** Buoys ***										
0026	110198		BUXX	B	TSRB Buoy H2O &	OSU	53-00.00S	175-33.00W	g	KIWI08RR
0037	110198		BUXX	E	Atmospheric light	OSU	53-00.00S	175-33.00W	g	KIWI08RR
2134	160198		BUXX	B	TSRB Buoy H2O &	OSU	67-47.04S	170-06.73W	g	KIWI08RR
2150	160198		BUXX	E	Atmospheric light	OSU	67-47.04S	170-06.72W	g	KIWI08RR
0037	170198		BUXX	B	TSRB Buoy H2O &	OSU	67-47.08S	170-06.78W	g	KIWI08RR
0110	170198		BUXX	E	Atmospheric light	OSU	67-47.05S	170-06.72W	g	KIWI08RR
1953	180198		BUXX	B	TSRB Buoy H2O &	OSU	64-49.99S	170-05.99W	g	KIWI08RR
2017	180198		BUXX	E	Atmospheric light	OSU	64-49.99S	170-05.98W	g	KIWI08RR
1919	190198		BUXX	B	TSRB buoy H2O &	OSU	62-00.00S	170-05.99W	g	KIWI08RR
1940	190198		BUXX	E	Atmospheric light	OSU	62-00.00S	170-05.99W	g	KIWI08RR
2142	250198		BUXX	B	TSRB buoy H2O &	OSU	60-00.00S	170-05.99W	g	KIWI08RR
2207	250198		BUXX	E	Atmospheric light	OSU	60-00.00S	170-06.00W	g	KIWI08RR
2110	260198		BUXX	B	TSRB Buoy H2O &	OSU	61-00.00S	170-06.00W	g	KIWI08RR
2132	260198		BUXX	E	Atmospheric light	OSU	61-00.00S	170-06.00W	g	KIWI08RR
2146	280198		BUXX	B	TSRB Buoy H2O &	OSU	65-10.00S	170-06.00W	g	KIWI08RR
2209	280198		BUXX	E	Atmospheric light	OSU	65-09.99S	170-06.00W	g	KIWI08RR
0005	290198		BUXX	B	TSRB Buoy H2O &	OSU	65-10.00S	170-05.99W	g	KIWI08RR
0032	290198		BUXX	E	Atmospheric light	OSU	65-09.99S	170-05.99W	g	KIWI08RR
#*** Hydrocasts ***										
0130	110198		HCGF	B	Trace Metal Rosette	UHI	53-00.00S	175-32.99W	g	KIWI08RR
0159	110198		HCGF	E	Trace Metal Rosette	UHI	53-00.00S	175-32.99W	g	KIWI08RR
0312	110198		HCGF	B	TM GO FLO Trace(MML)	SIX	53-00.00S	175-32.99W	g	KIWI08RR
0537	110198		HCGF	E	Metal Analysis 500M	SIX	53-00.00S	175-32.99W	g	KIWI08RR
1024	150198		HCGF	B	Trace Metal Rosette	UHI	67-47.04S	170-05.72W	g	KIWI08RR
0014	160198		HCGF	E	Trace Metal Rosette	UHI	67-48.58S	170-06.73W	g	KIWI08RR
1446	160198		HCGF	B	TM GO FLO Trace(MML)	SIX	67-46.98S	170-06.16W	g	KIWI08RR
1545	160198		HCGF	E	Metal Analysis 500M	SIX	67-46.98S	170-06.17W	g	KIWI08RR
1927	160198		HCGF	B	TM GO FLO Trace(MML)	SIX	67-47.04S	170-06.73W	g	KIWI08RR
2115	160198		HCGF	E	Metal Analysis 500M	SIX	67-47.04S	170-06.72W	g	KIWI08RR
2232	160198		HCGF	B	Trace Metal-BBS&UCSB	UCSB	67-47.05S	170-06.73W	g	KIWI08RR
2333	160198		HCGF	E	Trace Metal Rosette	UCSB	67-47.05S	170-06.72W	g	KIWI08RR
0033	170198		HCGF	B	TM GO FLO Trace(MML)	SIX	67-47.09S	170-06.79W	g	KIWI08RR
0109	170198		HCGF	E	Metal Analysis 500M	SIX	67-47.04S	170-06.72W	g	KIWI08RR
0153	170198		HCGF	B	Trace Metal(UMAD)	SIX	67-47.04S	170-06.71W	g	KIWI08RR
0214	170198		HCGF	E	Trace Metal Rosette	SIX	67-47.04S	170-06.72W	g	KIWI08RR

#GMT	DDMMYY	SAMP	B	SAMPLE	DISP				p	CRUISE
#TIME	DATE	TZ	CODE	E IDENTIFIER	CODE	LATITUDE	LONGITUDE		c	LEG-SHIP
#										
0548	170198		HCGF	B TM GO FLO Trace(MML)	SIX	67-47.04S	170-06.72W	g		KIWI08RR
0834	170198		HCGF	E Metal Analysis 500M	SIX	67-47.05S	170-06.73W	g		KIWI08RR
2320	170198		HCGF	B Trace Metal-BBS&UCSB	UCSB	64-49.99S	170-05.99W	g		KIWI08RR
0019	180198		HCGF	E Trace Metal Rosette	UCSB	64-49.99S	170-05.99W	g		KIWI08RR
0119	180198		HCGF	B TM GO FLO Trace(MML)	SIX	64-50.00S	170-06.00W	g		KIWI08RR
0140	180198		HCGF	E Metal Analysis 500M	SIX	64-50.00S	170-05.99W	g		KIWI08RR
0539	180198		HCGF	B TM GO FLO Trace(MML)	SIX	64-50.00S	170-06.01W	g		KIWI08RR
0714	180198		HCGF	E Metal Analysis 500M	SIX	64-47.04S	170-06.72W	g		KIWI08RR
0934	180198		HCGF	B Trace Metal(UMAD)	SIX	64-49.99S	170-05.98W	g		KIWI08RR
1025	180198		HCGF	E Trace Metal Rosette	SIX	64-50.00S	170-06.01W	g		KIWI08RR
1425	180198		HCGF	B TM GO FLO Trace(MML)	SIX	64-49.98S	170-05.89W	g		KIWI08RR
1510	180198		HCGF	E Metal Analysis 500M	SIX	64-50.00S	170-05.99W	g		KIWI08RR
1826	180198		HCGF	B TM GO FLO Trace(MML)	SIX	64-49.99S	170-06.00W	g		KIWI08RR
1926	180198		HCGF	E Metal Analysis 500M	SIX	64-49.99S	170-05.98W	g		KIWI08RR
1228	190198		HCGF	B Trace Metal-BBS&UCSB	UCSB	62-00.00S	170-06.00W	g		KIWI08RR
1325	190198		HCGF	E Trace Metal Rosette	UCSB	61-59.99S	170-06.01W	g		KIWI08RR
1415	190198		HCGF	B TM GO FLO Trace(MML)	SIX	62-00.00S	170-06.01W	g		KIWI08RR
1515	190198		HCGF	E Metal Analysis 500M	SIX	62-00.00S	170-05.99W	g		KIWI08RR
1815	190198		HCGF	B TM GO FLO Trace(MML)	SIX	62-00.00S	170-06.01W	g		KIWI08RR
1907	190198		HCGF	E Metal Analysis 500M	SIX	62-00.00S	170-06.00W	g		KIWI08RR
2015	190198		HCGF	B Trace Metal-BBS&UCSB	UCSB	62-00.00S	170-06.00W	g		KIWI08RR
2117	190198		HCGF	E TM rosette	UCSB	62-00.00S	170-05.99W	g		KIWI08RR
2206	190198		HCGF	B TM GO FLO Trace(MML)	SIX	62-00.00S	170-05.99W	g		KIWI08RR
2235	190198		HCGF	E Metal Analysis 500M	SIX	62-00.00S	170-05.99W	g		KIWI08RR
2339	190198		HCGF	B Trace Metal-BBS&UCSB	UCSB	62-00.01S	170-05.99W	g		KIWI08RR
0005	200198		HCGF	E Trace Metal Rosette	UCSB	62-00.00S	170-06.00W	g		KIWI08RR
0337	200198		HCGF	B TM GO FLO Trace(MML)	SIX	62-00.00S	170-05.99W	g		KIWI08RR
0606	200198		HCGF	E Metal Analysis 500M	SIX	62-00.00S	170-05.99W	g		KIWI08RR
0736	250198		HCGF	B Trace Metal(UMAD)	SIX	60-00.00S	170-05.99W	g		KIWI08RR
0839	250198		HCGF	E TM rosette	SIX	60-00.00S	170-06.00W	g		KIWI08RR
0848	250198		HCGF	B TM GO FLO Trace(MML)	SIX	60-00.00S	170-06.00W	g		KIWI08RR
0917	250198		HCGF	E Metal Analysis 500M	SIX	60-00.00S	170-06.00W	g		KIWI08RR
1228	250198		HCGF	B Trace Metal-BBS&UCSB	UCSB	60-00.00S	170-06.00W	g		KIWI08RR
1315	250198		HCGF	E Trace Metal Rosette	UCSB	60-00.00S	170-06.00W	g		KIWI08RR
1727	250198		HCGF	B TM GO FLO Trace(MML)	SIX	60-00.01S	170-06.00W	g		KIWI08RR
1800	250198		HCGF	E Metal Analysis 500M	SIX	60-00.00S	170-06.00W	g		KIWI08RR

#GMT	DDMMYY	SAMP	B	SAMPLE	DISP				P	CRUISE
#TIME	DATE	TZ	CODE	E IDENTIFIER	CODE	LATITUDE	LONGITUDE		c	LEG-SHIP
#										
2050	250198		HCGF	B TM GO FLO Trace(MML)	SIX	60-33.02S	169-24.01W	g		KIWI08RR
2130	250198		HCGF	E Metal Analysis 500M	SIX	60-00.00S	170-06.00W	g		KIWI08RR
2304	250198		HCGF	B Trace Metal-BBS&UCSB	UCSB	60-00.00S	170-05.99W	g		KIWI08RR
2345	250198		HCGF	E Trace Metal Rosette	UCSB	60-00.00S	170-06.00W	g		KIWI08RR
0041	260198		HCGF	B TM GO FLO Trace(MML)	SIX	60-00.00S	170-05.99W	g		KIWI08RR
0205	260198		HCGF	E Metal Analysis 500M	SIX	60-00.00S	170-06.00W	g		KIWI08RR
1300	260198		HCGF	B Trace Metal-BBS&UCSB	UCSB	60-59.99S	170-06.00W	g		KIWI08RR
1328	260198		HCGF	E Trace Metal Rosette	UCSB	60-59.98S	170-06.03W	g		KIWI08RR
1525	260198		HCGF	B Trace Metal-BBS&UCSB	UCSB	60-59.99S	170-06.01W	g		KIWI08RR
1609	260198		HCGF	E Trace Metal Rosette	UCSB	61-00.01S	170-05.99W	g		KIWI08RR
1617	260198		HCGF	B TM GO FLO Trace(MML)	SIX	61-00.00S	170-05.99W	g		KIWI08RR
1701	260198		HCGF	E Metal Analysis 500M	SIX	61-00.02S	170-05.97W	g		KIWI08RR
2022	260198		HCGF	B TM GO FLO Trace(MML)	SIX	61-00.00S	170-06.01W	g		KIWI08RR
2100	260198		HCGF	E Metal Analysis 500M	SIX	61-00.00S	170-06.00W	g		KIWI08RR
2210	260198		HCGF	B Trace Metal(UMAD)	SIX	61-00.00S	170-06.00W	g		KIWI08RR
2255	260198		HCGF	E Trace Metal Rosette	SIX	61-00.00S	170-06.00W	g		KIWI08RR
0005	270198		HCGF	B TM GO FLO Trace(MML)	SIX	61-00.00S	170-06.00W	g		KIWI08RR
0043	270198		HCGF	E Metal Analysis 500M	SIX	61-00.00S	170-06.00W	g		KIWI08RR
0710	280198		HCGF	B TM GO FLO Trace(MML)	SIX	65-09.96S	170-05.98W	g		KIWI08RR
0728	280198		HCGF	E Metal Analysis 500M	SIX	65-09.94S	170-05.89W	g		KIWI08RR
0756	280198		HCGF	B Trace Metal Rosette	UHI	65-09.99S	170-05.99W	g		KIWI08RR
0826	280198		HCGF	E Trace Metal Rosette	UHI	65-09.99S	170-06.00W	g		KIWI08RR
1100	280198		HCGF	B Trace Metal-BBS&UCSB	UCSB	65-10.00S	170-05.84W	g		KIWI08RR
1130	280198		HCGF	E Trace Metal Rosette	UCSB	65-10.00S	170-06.00W	g		KIWI08RR
1545	280198		HCGF	B TM GO FLO Trace(MML)	SIX	65-09.99S	170-06.00W	g		KIWI08RR
1622	280198		HCGF	E Metal Analysis 500M	SIX	65-10.00S	170-06.00W	g		KIWI08RR
2043	280198		HCGF	B TM GO FLO Trace(MML)	SIX	65-09.99S	170-06.00W	g		KIWI08RR
2135	280198		HCGF	E Metal Analysis 500M	SIX	65-10.00S	170-05.99W	g		KIWI08RR
2233	280198		HCGF	B Trace Metal-BBS&UCSB	UCSB	65-10.00S	170-06.00W	g		KIWI08RR
2307	280198		HCGF	E Trace Metal Rosette	UCSB	65-10.00S	170-06.00W	g		KIWI08RR
0005	290198		HCGF	B TM GO FLO Trace(MML)	SIX	65-10.00S	170-05.99W	g		KIWI08RR
0055	290198		HCGF	E Metal Analysis 500M	SIX	65-10.00S	170-06.00W	g		KIWI08RR



#GMT	DDMMYY	SAMP	B	SAMPLE	DISP			p	CRUISE
#TIME	DATE	TZ	CODE	E IDENTIFIER	CODE	LATITUDE	LONGITUDE	c	LEG-SHIP
#-----	-----	---	---	-----	---	-----	-----	-	-----
**** Open Nets ****									
0848	150198		ON1M	B Live Net Tow	MBRD	67-47.04S	170-06.03W	g	KIWI08RR
0928	150198		ON1M	E Vertical Tow 200m	MBRD	67-47.04S	170-05.66W	g	KIWI08RR
1140	160198		ONMC	B Mocness	MBRD	67-47.04S	170-06.73W	g	KIWI08RR
1341	160198		ONMC	E Mocness 500-0M	MBRD	67-52.24S	170-11.44W	g	KIWI08RR
0639	180198		ON1M	B Live Net Tow	MBRD	64-50.00S	170-06.00W	g	KIWI08RR
0726	180198		ON1M	E Vertical Tow 200m	MBRD	64-50.00S	170-06.00W	g	KIWI08RR
0839	180198		ON1M	B Live Net tow	MBRD	64-49.99S	170-05.94W	g	KIWI08RR
0900	180198		ON1M	E Vertical Tow 200m	MBRD	64-50.00S	170-06.00W	g	KIWI08RR
1050	180198		ONMC	B Mocness	MBRD	64-49.92S	170-05.96W	g	KIWI08RR
1310	180198		ONMC	E Mocness 500-0M	MBRD	64-53.49S	169-53.61W	g	KIWI08RR
1006	190198		ONMC	B Mocness	MBRD	62-02.68S	170-06.33W	g	KIWI08RR
1152	190198		ONMC	E Mocness 500-0M	MBRD	61-58.86S	170-05.92W	g	KIWI08RR
1343	190198		ON1M	B Live Net Tow	MBRD	62-00.00S	170-05.99W	g	KIWI08RR
1402	190198		ON1M	E vertical tow 200M	MBRD	62-00.01S	170-05.97W	g	KIWI08RR
0945	250198		ONMC	B Mocness	MBRD	60-00.35S	170-06.29W	g	KIWI08RR
1138	250198		ONMC	E Mocness 500-0M	MBRD	60-05.09S	170-09.42W	g	KIWI08RR
1338	250198		ON1M	B Live Net Tow	MBRD	60-00.00S	170-06.00W	g	KIWI08RR
1403	250198		ON1M	E vertical tow 200M	MBRD	60-00.00S	170-05.99W	g	KIWI08RR
0243	260198		ON1M	B Live Net Tow	MBRD	61-00.00S	170-06.00W	g	KIWI08RR
1404	260198		ON1M	E vertical tow 200M	MBRD	61-00.02S	170-05.99W	g	KIWI08RR
0845	280198		ONMC	B Mocness	MBRD	65-09.73S	170-06.53W	g	KIWI08RR
1009	280198		ONMC	E Mocness 500-0M	MBRD	65-08.28S	170-10.51W	g	KIWI08RR
1155	280198		ON1M	B Live Net Tow	MBRD	65-10.00S	170-05.99W	g	KIWI08RR
1217	280198		ON1M	E vertical tow 200M	MBRD	65-10.00S	170-05.99W	g	KIWI08RR

#GMT	DDMMYY	SAMP	B	SAMPLE	DISP				p	CRUISE
#TIME	DATE	TZ	CODE	E IDENTIFIER	CODE	LATITUDE	LONGITUDE		c	LEG-SHIP
#										
**** Geochemical Samples ****										
0231	170198		GCXX	B Thorium Pumps-6	SIX	67-47.04S	170-06.72W	g		KIWI08RR
0535	170198		GCXX	E Thorium (SUNY) 300M	SIX	67-47.04S	170-06.72W	g		KIWI08RR
0217	180198		GCXX	B Thorium Pumps-6	SIX	64-50.00S	170-06.00W	g		KIWI08RR
0520	180198		GCXX	E Thorium (SUNY) 300M	SIX	64-50.00S	170-06.01W	g		KIWI08RR
0020	200198		GCXX	B Thorium Pumps-6	SIX	62-00.00S	170-06.00W	g		KIWI08RR
0327	200198		GCXX	E Thorium (SUNY) 300M	SIX	62-00.00S	170-06.00W	g		KIWI08RR
1416	250198		GCXX	B Thorium Pumps-6	SIX	60-00.00S	170-06.00W	g		KIWI08RR
1720	250198		GCXX	E Thorium (SUNY) 300M	SIX	60-00.00S	170-05.99W	g		KIWI08RR
0916	260198		GCXX	B Thorium Pumps-6	SIX	61-00.00S	170-06.00W	g		KIWI08RR
1229	260198		GCXX	E Thorium (SUNY) 300M	SIX	61-00.00S	170-06.00W	g		KIWI08RR
1225	280198		GCXX	B Thorium Pumps-6	SIX	65-10.00S	170-06.00W	g		KIWI08RR
1535	280198		GCXX	E Thorium (SUNY) 300M	SIX	65-10.00S	170-06.00W	g		KIWI08RR
****				End Sample Index						KIWI08RR