

THE GOTHAM

i⁴

i⁻

i⁵ (non-reducible)

i⁸⁶ repressed by inducer

i⁶⁹⁴ (heat sens) mutant of i⁵
Mrel

i¹⁰³ (heat sens) mutant of i⁺
Mvrel

heat sens. minus: const at high temp



Sir GOTHAM

700 Fifth Avenue, N.Y. 19, N.Y., phone Circle 7-2200, cable Gotham, teletype NY 1-3091, RCAtelex NY 4244

THE GOTHAM

$2000/f_{i+}$

0
 < 20

$IPTG \approx I$
 15,000

$TDB = I$
 1000

$2310/f_{i-}$

20,000

2,000

2,000

i^{86}

1000

500-800

50-100

i^{86}/f_{i+}

< 20

3000

< 20

i^{86}/f_{i-}

2000

1000

100

$$R^{86} + I \rightleftharpoons R^{86} T$$

LN

i^5/f_{i+}

< 20

< 20

< 20

i^5/f_{i-}

< 20

< 20

< 20



THE GOTHAM

λ^{694} 30°C Onomduner CIPTG
 200 41°C
 7000
 λ^{694}/fa^+ <20 <20
 ~~λ^{694}/fa^+~~
 λ^{694}/fa^- 200 10,000

with indur
 30°C 41°C
 200 7000

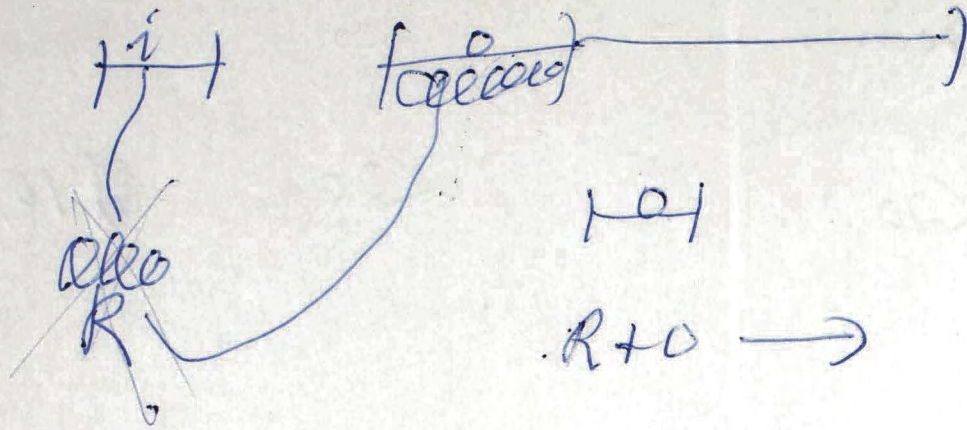
<20 ~~10,000~~

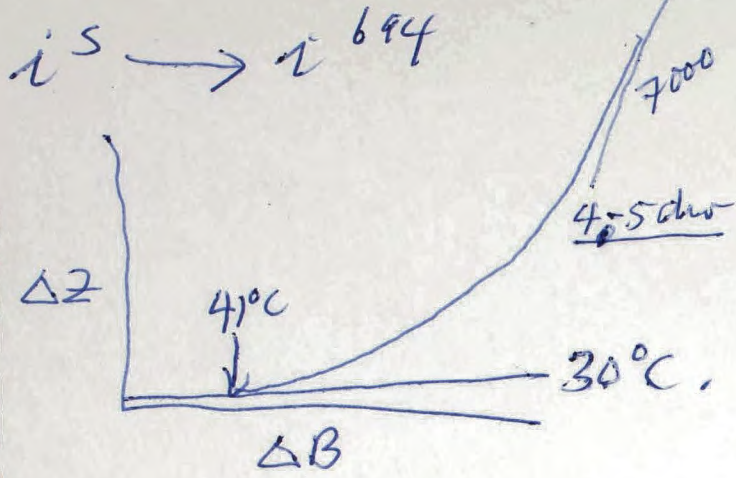
200 10,000



Sir GOTHAM

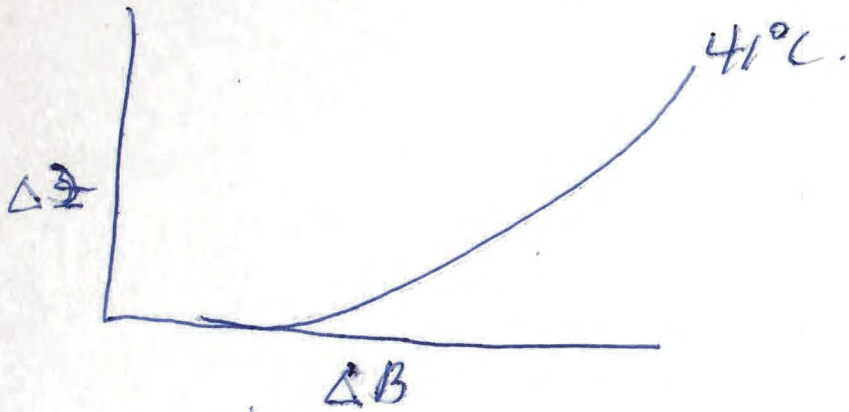
700 Fifth Avenue, N.Y. 19, N.Y., phone Circle 7-2200, cable Gotham, teletype NY 1-3091, RCAtex NY 4244



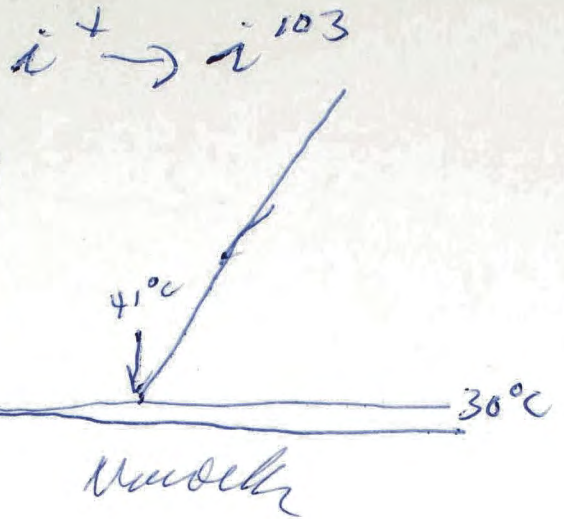


mel

1) Separation heat 41°C. 2 hrs.



i^{694} not synthesized



1) Store heat

