



Southern
California Building

Souvenir of the
"OUT-OF-DOORS" EXHIBIT
of the

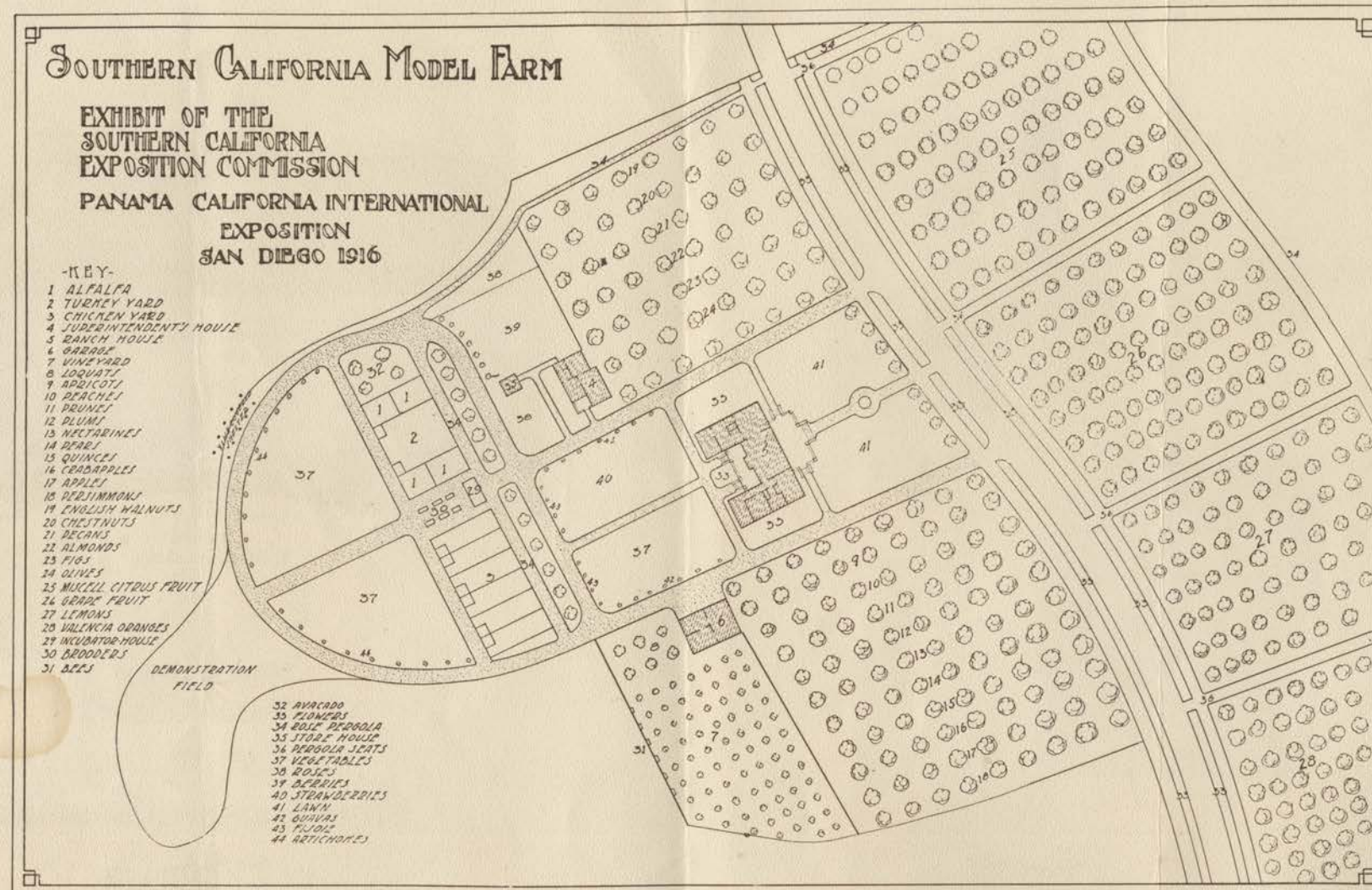
*Seven Southern Counties
of California*

at the
Panama California International Exposition
San Diego, 1916

IMPERIAL
LOS ANGELES
ORANGE

RIVERSIDE
SAN BERNARDINO
SAN DIEGO

VENTURA



The Model Farm and Citrus Grove is a part of the exhibit of the Seven Southern Counties of California at the Panama California International Exposition at San Diego, and is designed to give a practical demonstration of what can be done on a ranch or farm in Southern California.

The citrus trees, including all varieties of oranges, lemons and grape fruit (or pomelo), were planted in August, 1912, and bore fruit in two years and six months from time of planting. The model farm, planted in deciduous trees, plants and flowers, was set out in March of 1913, and shows what can be accomplished in three years. In addition to showing the results obtained, there is a daily demonstration of the

actual work of carrying on and taking care of a ranch of this kind. The model farm proper covers six acres, the demonstration field three acres, the citrus grove five acres, the formal gardens and buildings two acres—the total acreage of the exhibit being nearly seventeen acres. One section of the citrus grove, containing the navel oranges, is not shown in the above diagram.

The model bungalow on the farm cost, complete, \$4,000.00. Blue prints showing the floor plan and four elevations of the bungalow may be obtained of the Custodian at the bungalow, or at the office of the Commission in the Southern California Building at \$1.00 per set.



Front View of Bungalow



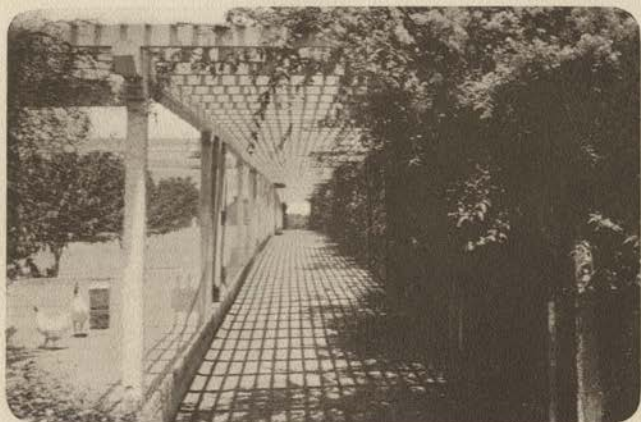
Rear View of Bungalow



Garage and Stable



Vegetable Garden and Rear View of Poultry Yards



Pergola Along Front of Poultry Yards



Panorama of the "Out-of-Doors" Exhibit, with the Exposition Buildings in the background



Formal Gardens and Rear of Southern
California Building



Superintendent's Cottage on the
Model Farm



Fig Tree
Planted March, 1913



English Walnut Tree
Planted March, 1913
Bearing 62 nuts



Lemon Tree
Planted August, 1912



Navel Orange Tree
Planted August, 1912