

INFORMAL REPORT AND INDEX OF
NAVIGATION, DEPTH, MAGNETIC AND SUBBOTTOM PROFILER DATA
(Issued April 1988)

TORTUGA EXPEDITION

LEG 1

San Diego, California (16 October 1987)
to
Puerto Quetzal, Guatemala (6 November 1987)

R/V Washington

Chief Scientist - J. Orcutt (SIO)

Resident Marine Technician - E. Pillard

Post-Cruise Processing and Report Preparation
by Geological Data Center, Scripps Institution of Oceanography

Data Collection and Processing Funded by NSF
Grant Number OCE87-02835

NOTE: This is an index of underway geophysical data edited and processed after the completion of the cruise leg and is intended primarily for informal use within the institution. This document is not to be reproduced or distributed outside Scripps without prior approval of the chief scientist or the Geological Data Center, Scripps Institution of Oceanography, La Jolla, California 92093.

GDC Cruise I.D.# 232

INFORMAL REPORT AND INDEX OF NAVIGATION
AND UNDERWAY GEOPHYSICAL DATA

Processed by the Geological Data Center
Scripps Institution of Oceanography

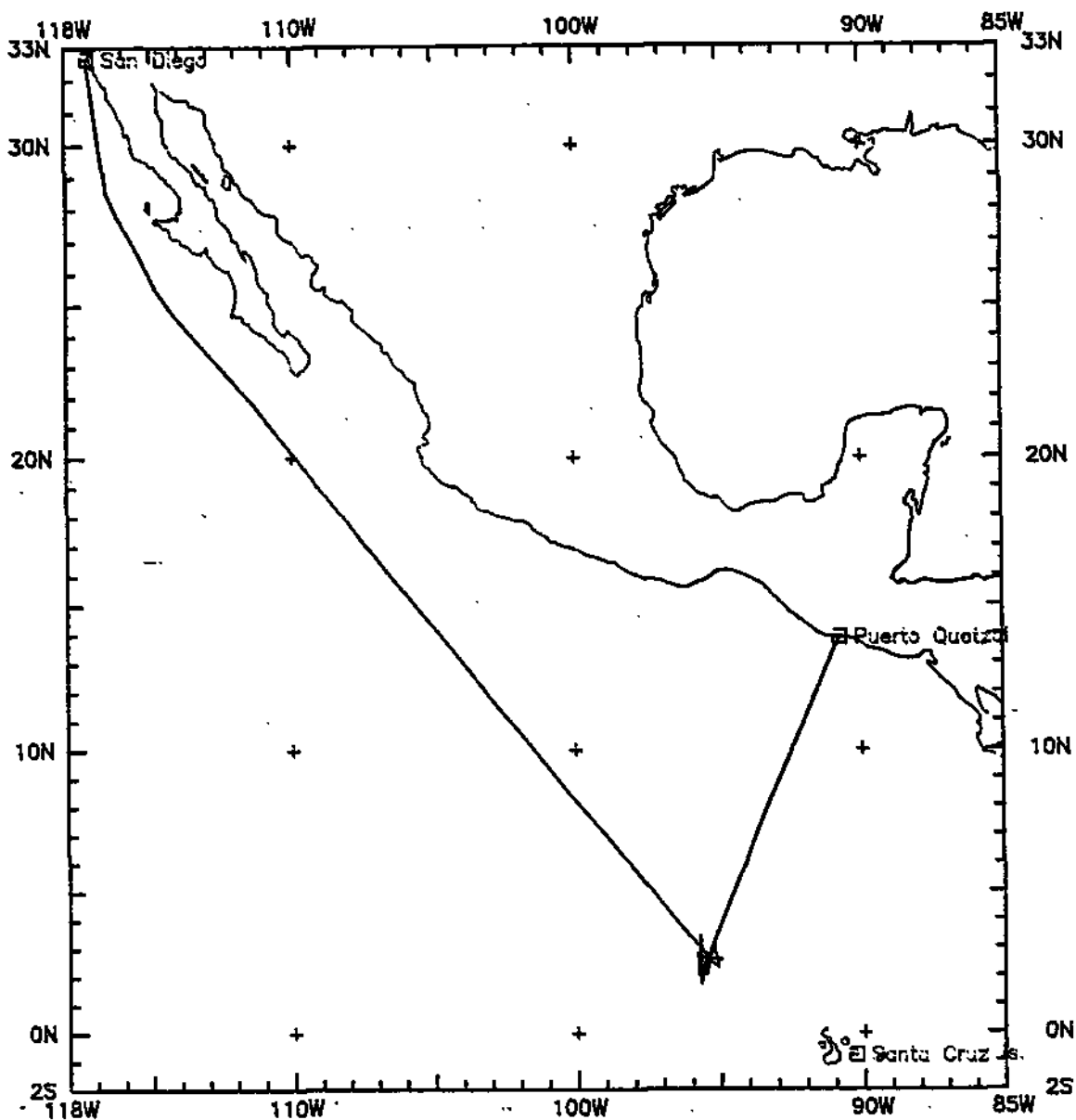
Contents:

-
- Index Chart - gives track of cruise leg, dates, ports, and mileage of each type of data collected.
- Track Charts - annotated with dates and hour ticks.
- Profiles - depth, magnetic anomaly and gravity free air anomaly vs. distance. Sections of track having subbottom profiles (airgun or watergun) records have a wide black line along the bottom of the profile. Sections having Sea Beam are indicated by a narrow black line.
- Sample Index - list of beginning and end times and positions of all underway records as well as all other samples and measurements (geology, biology, physical oceanography, etc.) collected on the cruise leg.

NOTE: One or more of the underway data types may not be collected on a given cruise leg.

For information on the availability and reproduction costs of data in the following forms, contact S. M. Smith, Curator, Geological Data Center, Scripps Institution of Oceanography, La Jolla, CA 92093. Phone (619)534-2752.

1. Navigation listing with times and positions of course and speed changes, fixes and drift velocity.
2. Depth compilation plots - compilation plots at the traditional scale of 4in/degree longitude (1:1,000,000) are no longer produced for Sea Beam cruises. Custom plots may be requested of vertical beam (2 $\frac{2}{3}$ degree beam width) depths retrieved at one minute intervals of ship time.
3. Plots of depths, magnetics or gravity profiles along track - custom plots at various map and profile scales on Mercator projection may be requested.
4. Separate time series files of navigation, depth, gravity and magnetics as well as these data merged in the MGD77 Exchange format on magnetic tape.
5. Microfilm or Xerox copies of:
 - a. Echosounder records - 12 and 3.5 kHz frequency
 - b. Subbottom profiler records
 - c. Magnetometer records
 - d. Gravity records
 - e. Underway data log book



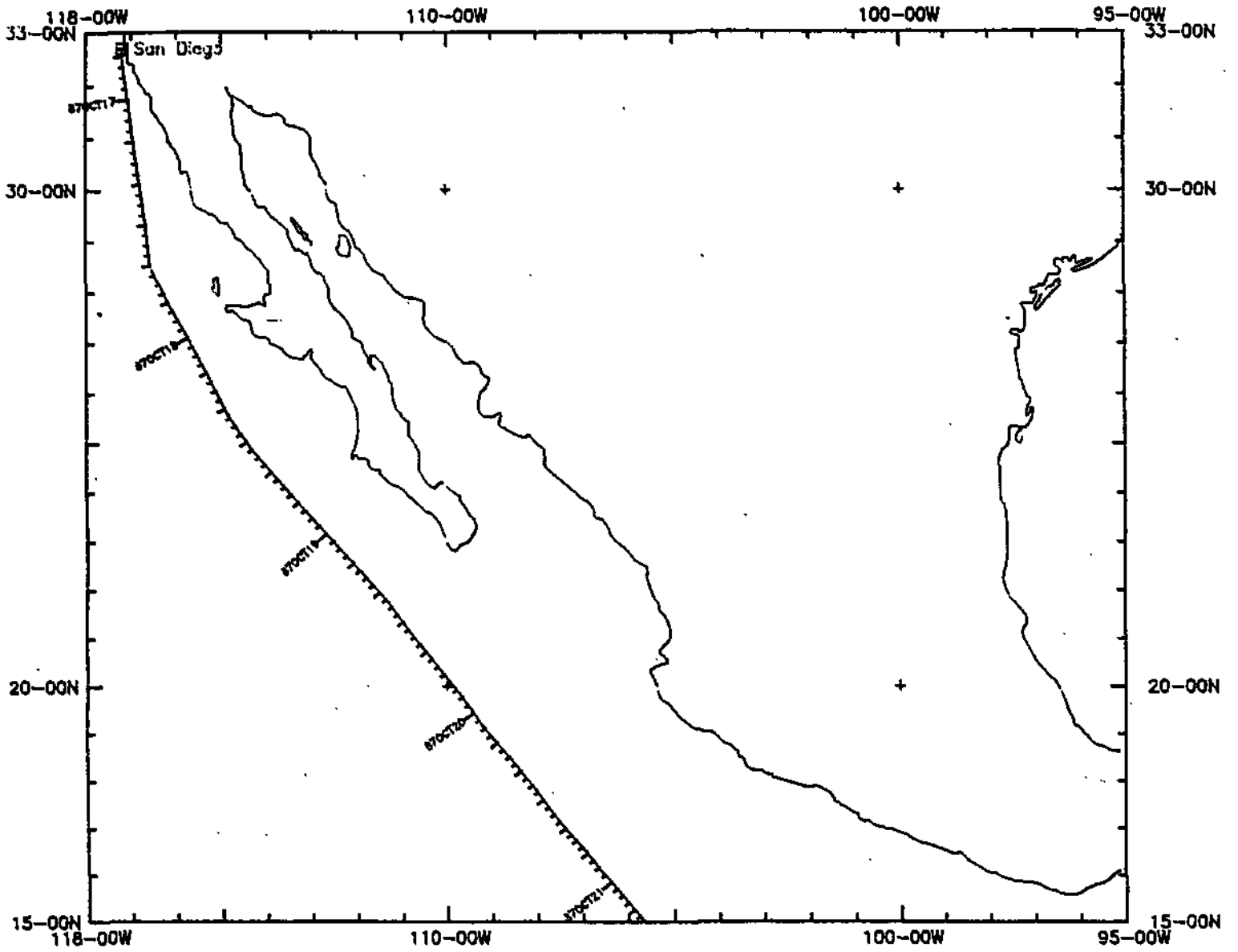
TORTUGA LEG 1 Track at .1632in/deg

TORTUGA EXPEDITION LEG 1

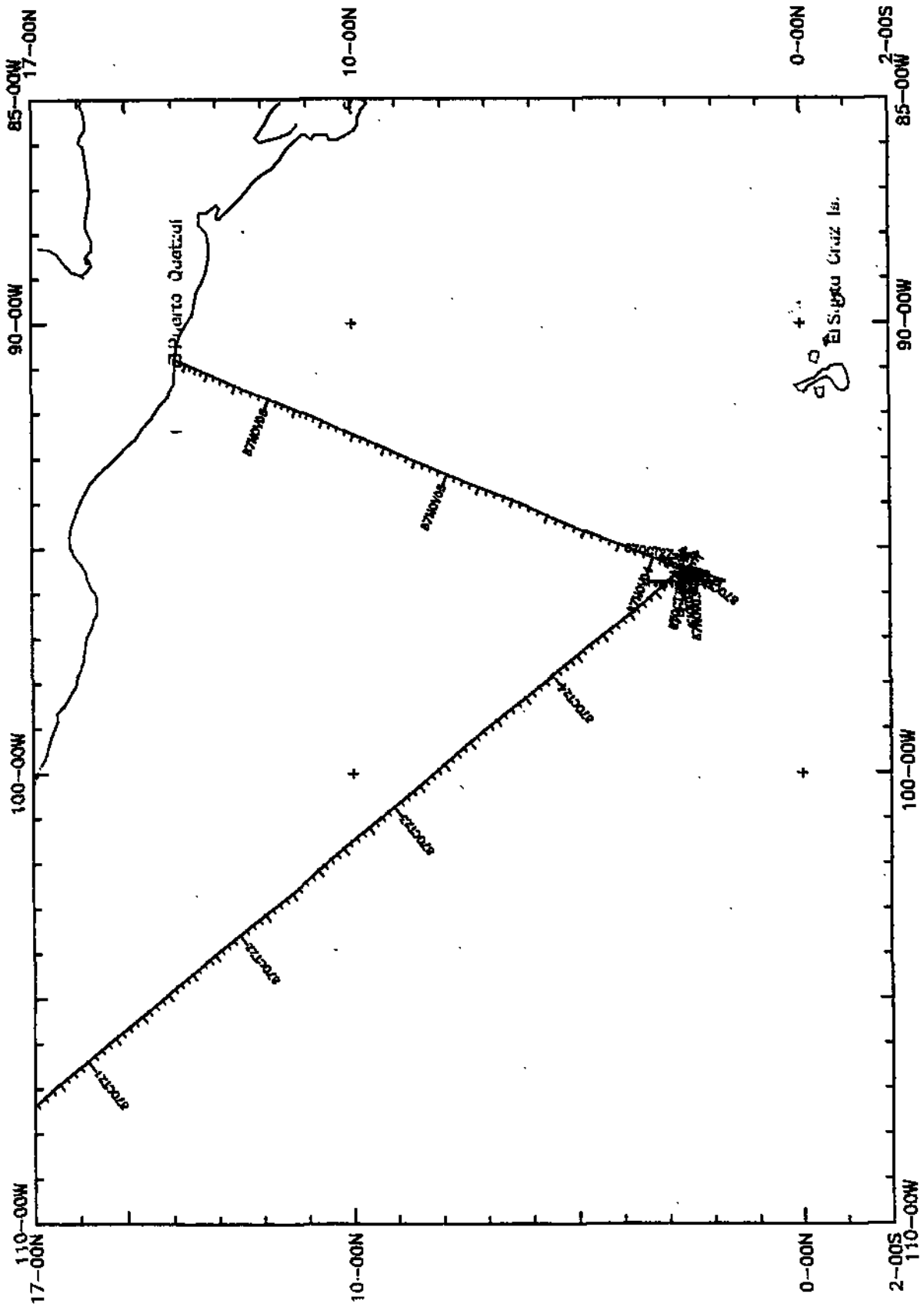
CHIEF SCIENTIST: J. Orcutt (SIO)
 PORTS: San Diego, Calif. - Puerto Quetzal, Guatemala
 DATES: 16 October - 6 November 1987
 SHIP: R/V T. Washington

TOTAL MILEAGE OF UNDERWAY DATA COLLECTED

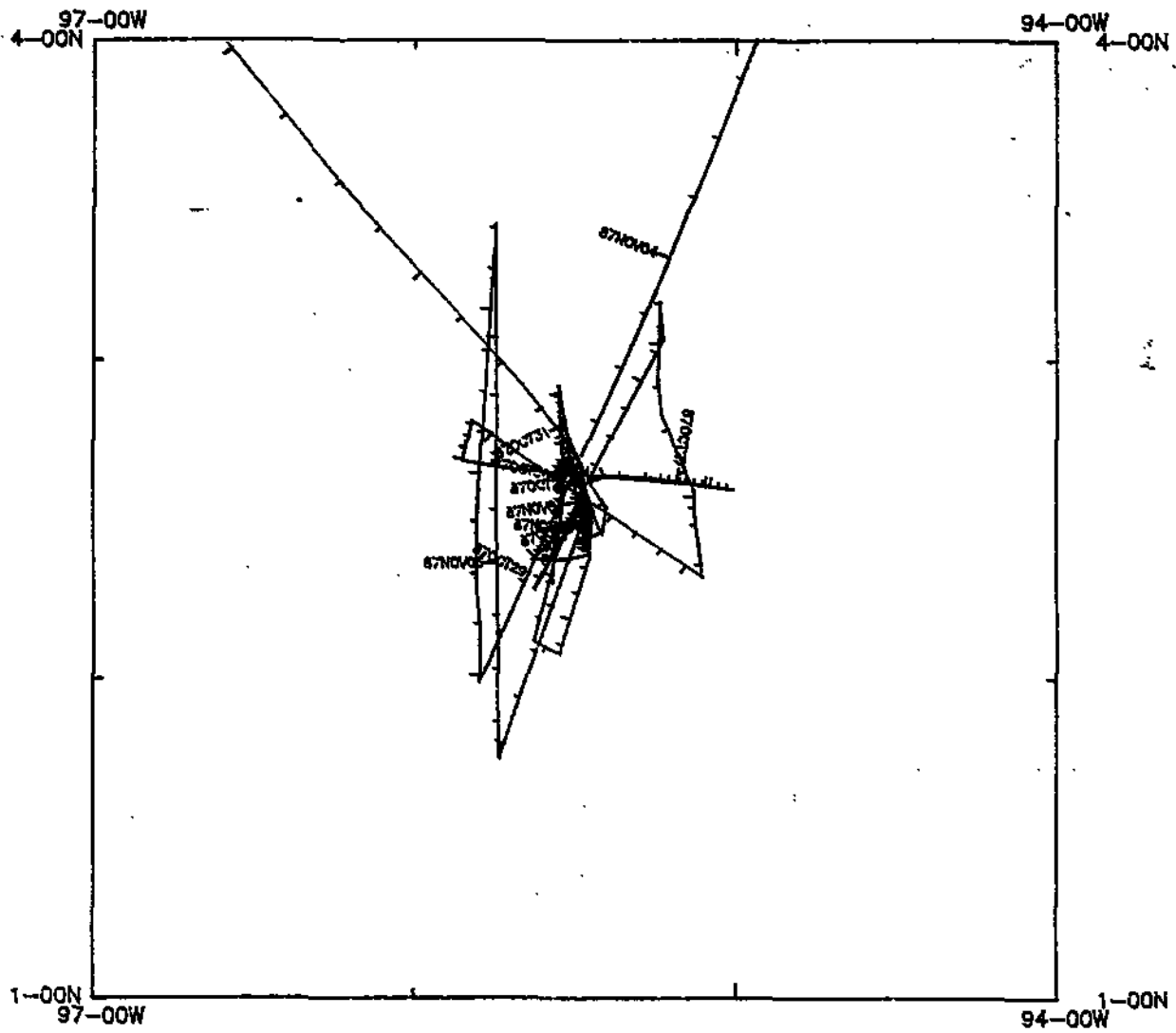
- 1) Cruise - 4303 miles
- 2) Bathymetry - 4213 miles
- 3) Magnetics - 3103 miles
- 4) Seismic Reflection - none collected
- 5) Gravity - 4303 miles
- 6) Sea Beam - 4213 miles



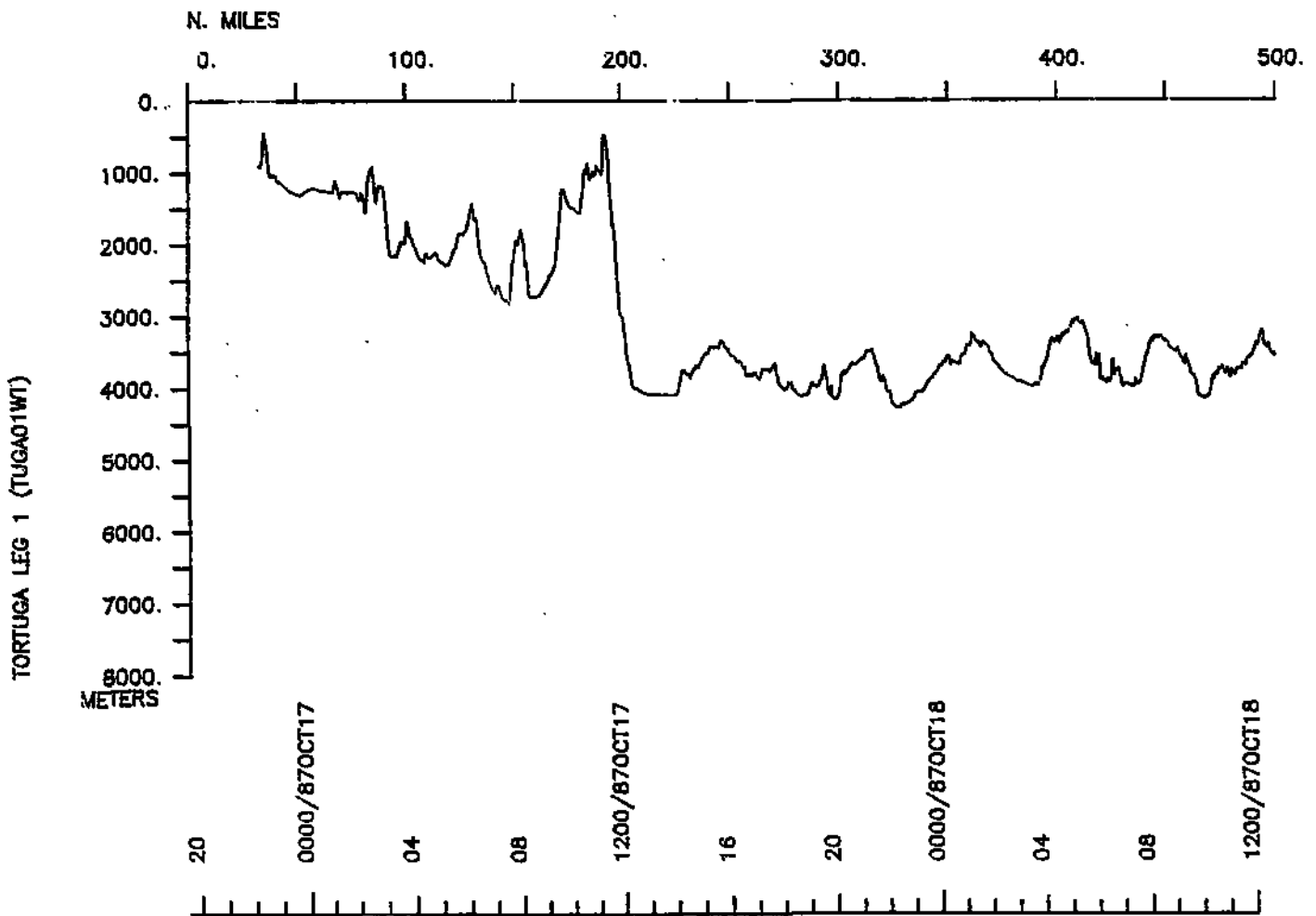
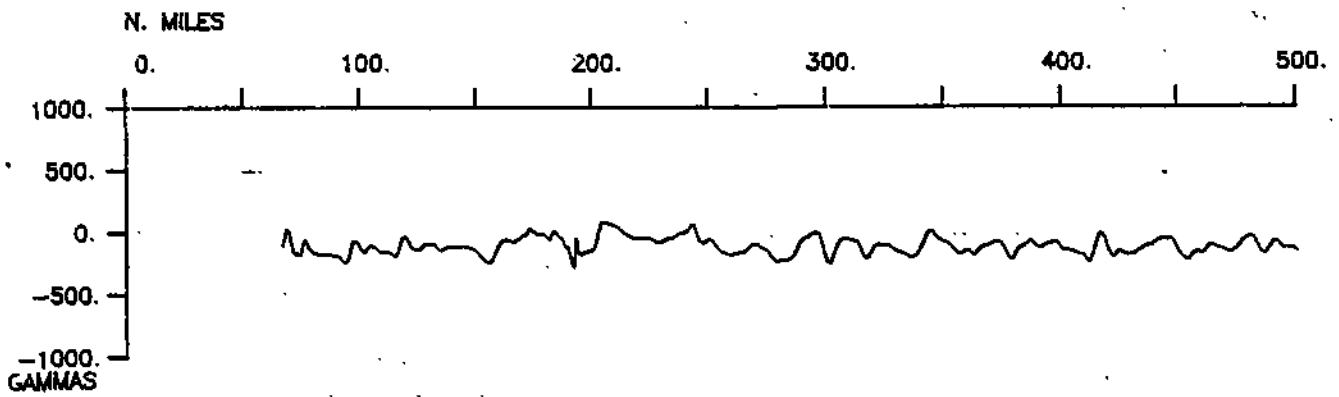
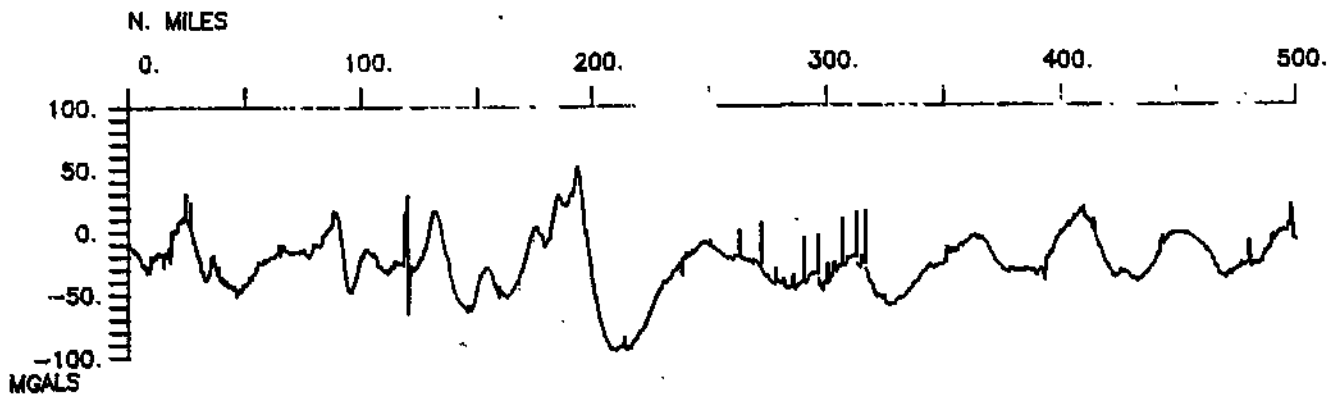
TORTUGA LEG 1 track 1 of 2 (TUGA01WT)



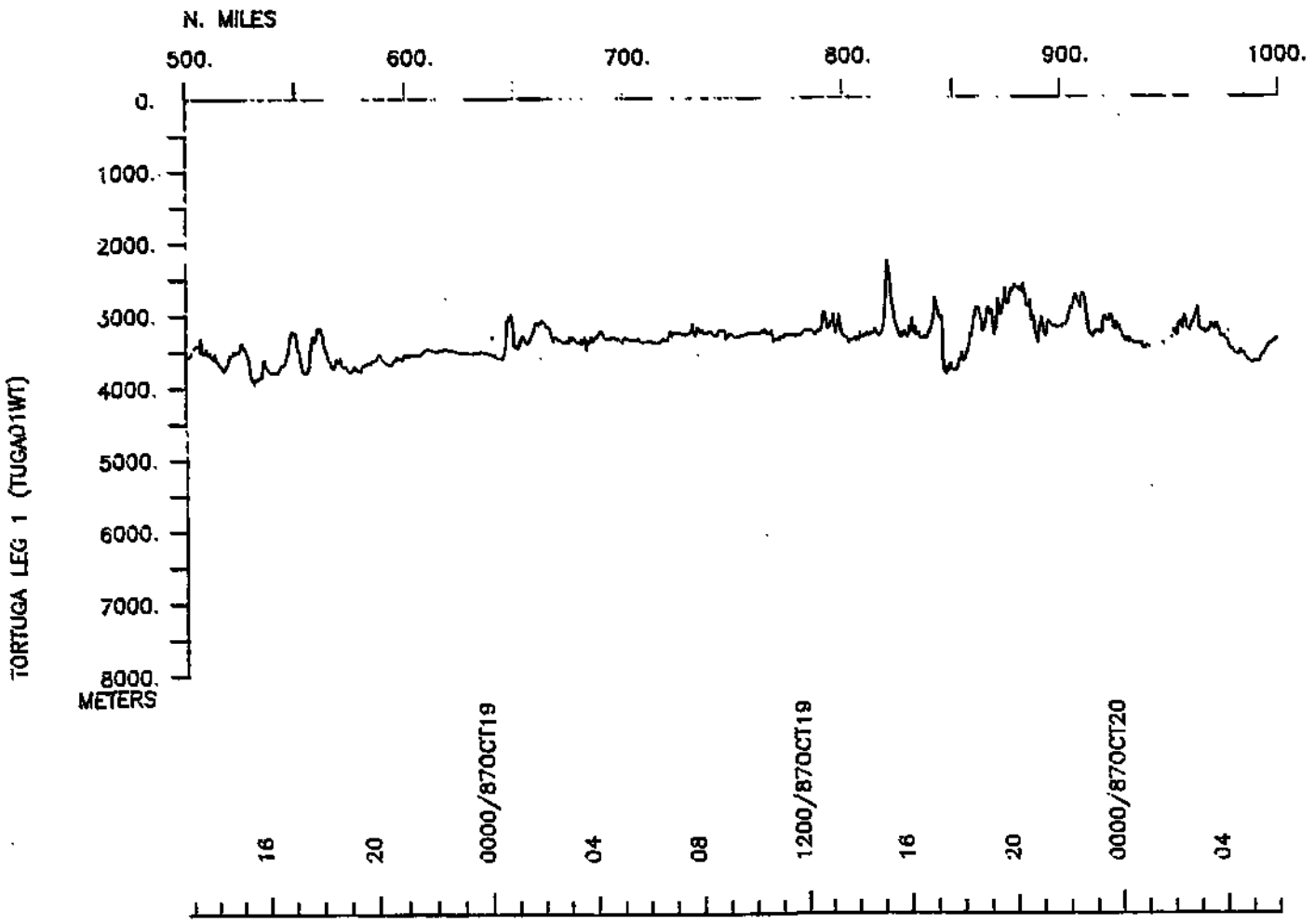
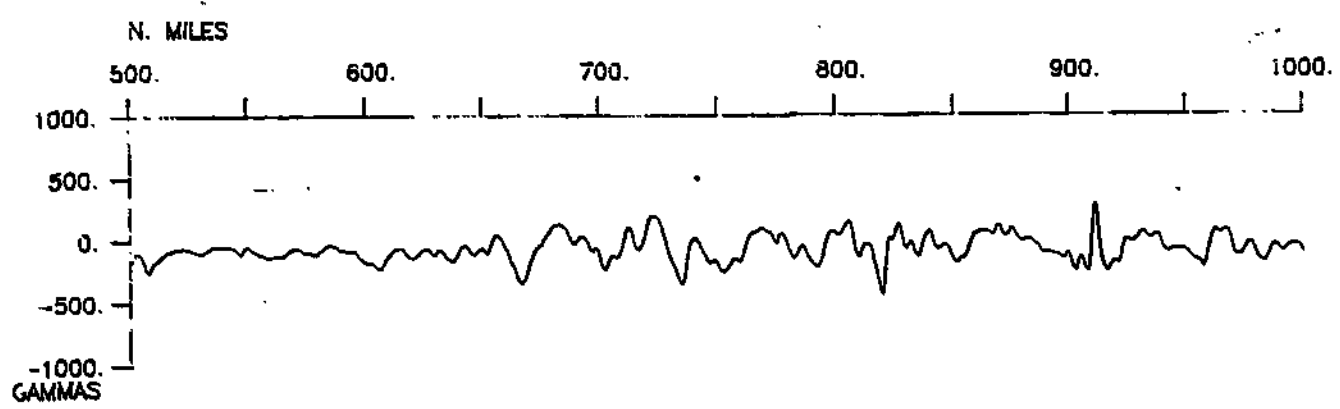
TORTUGA LEG 1 track 2 of 2 TUGA01WT



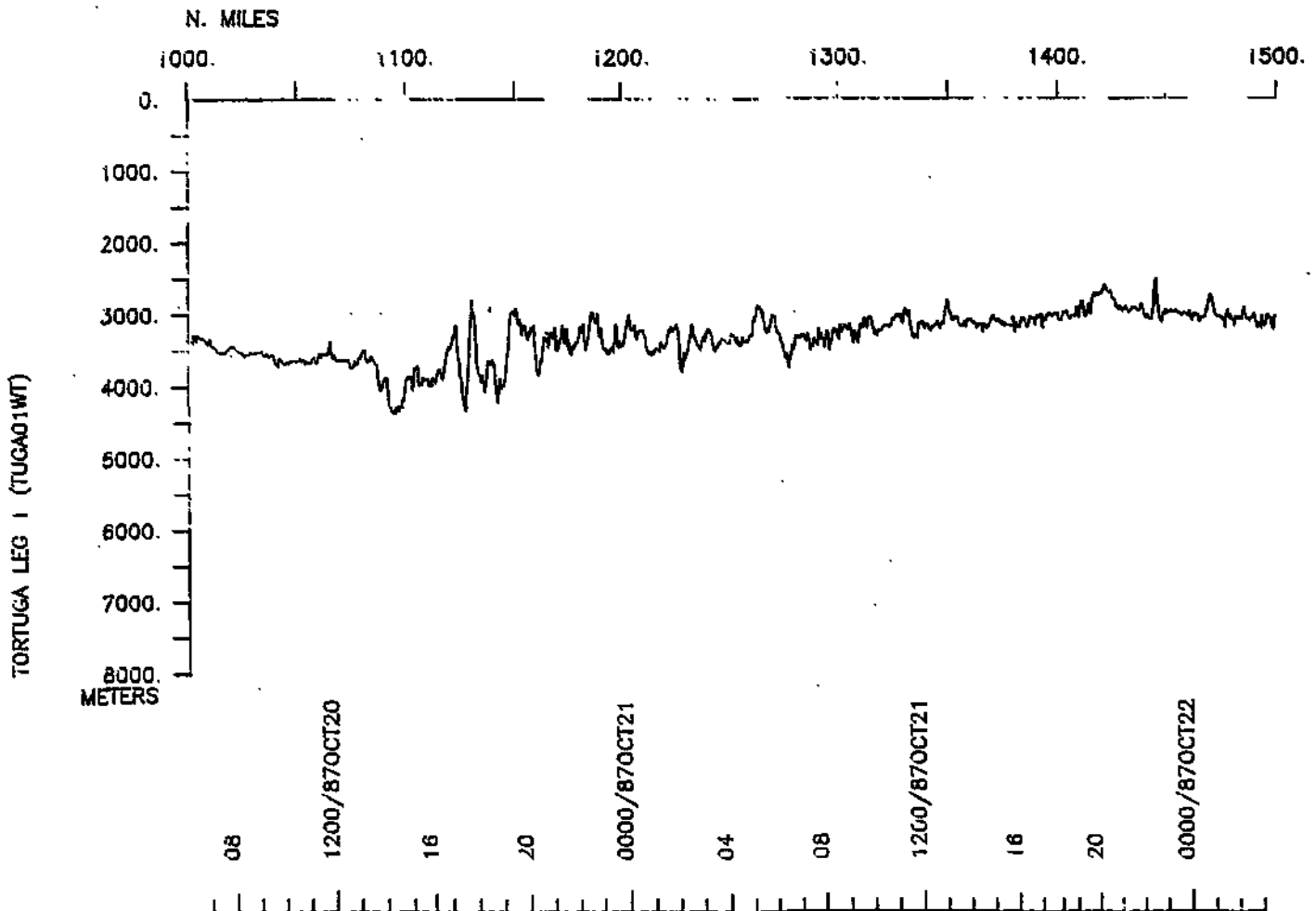
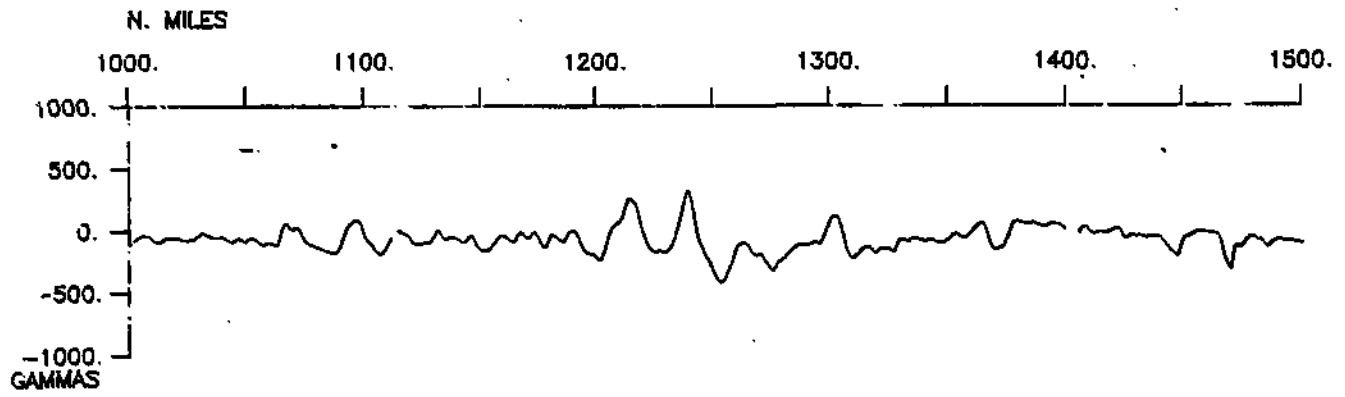
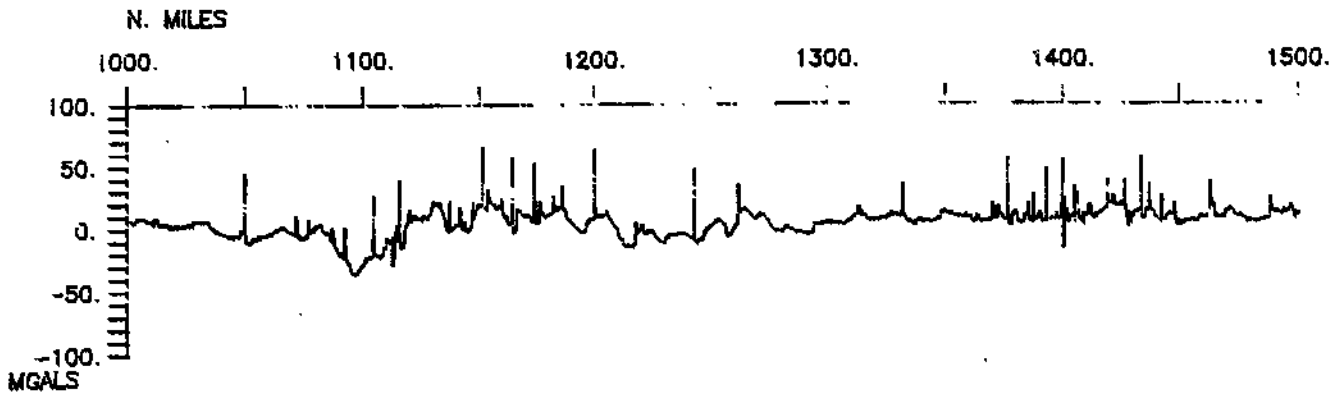
TORTUGA LEG 1 SURVEY AREA

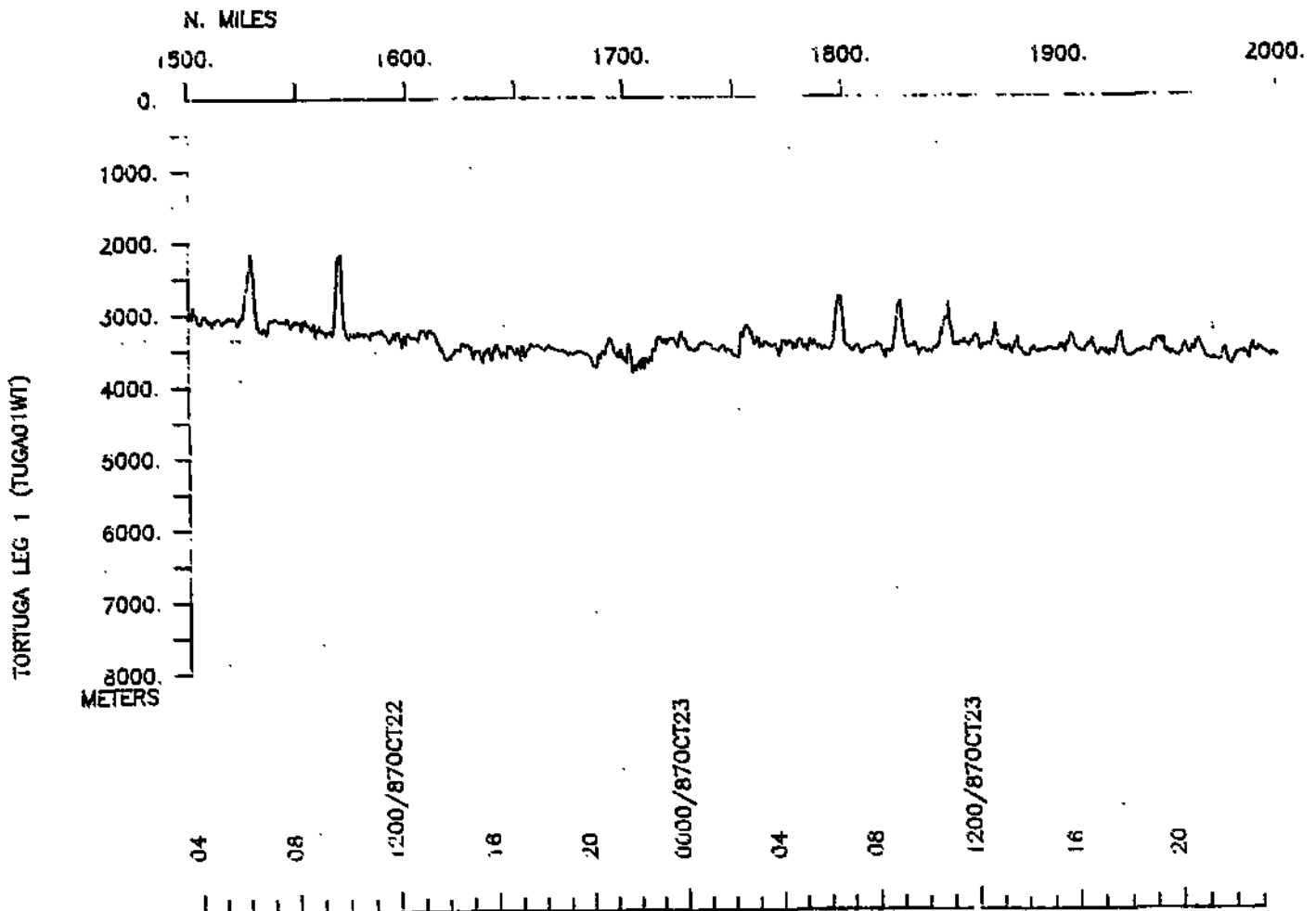
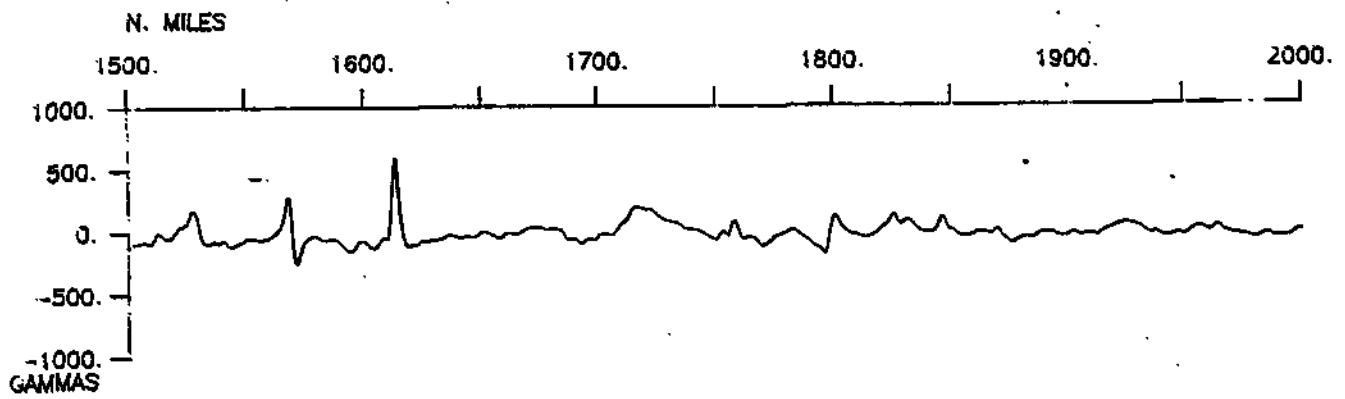
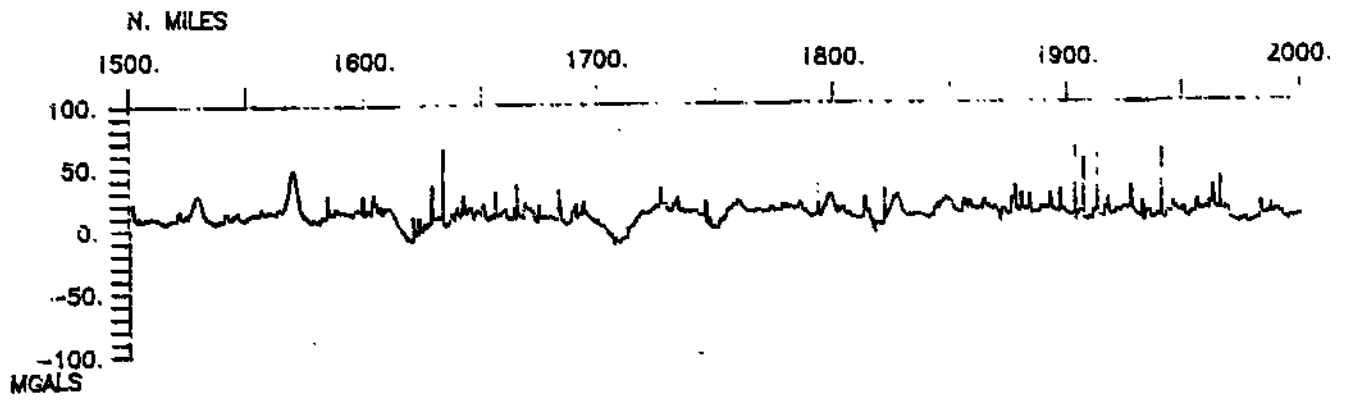


TORTUGA LEG 1 (TUGA01WT)

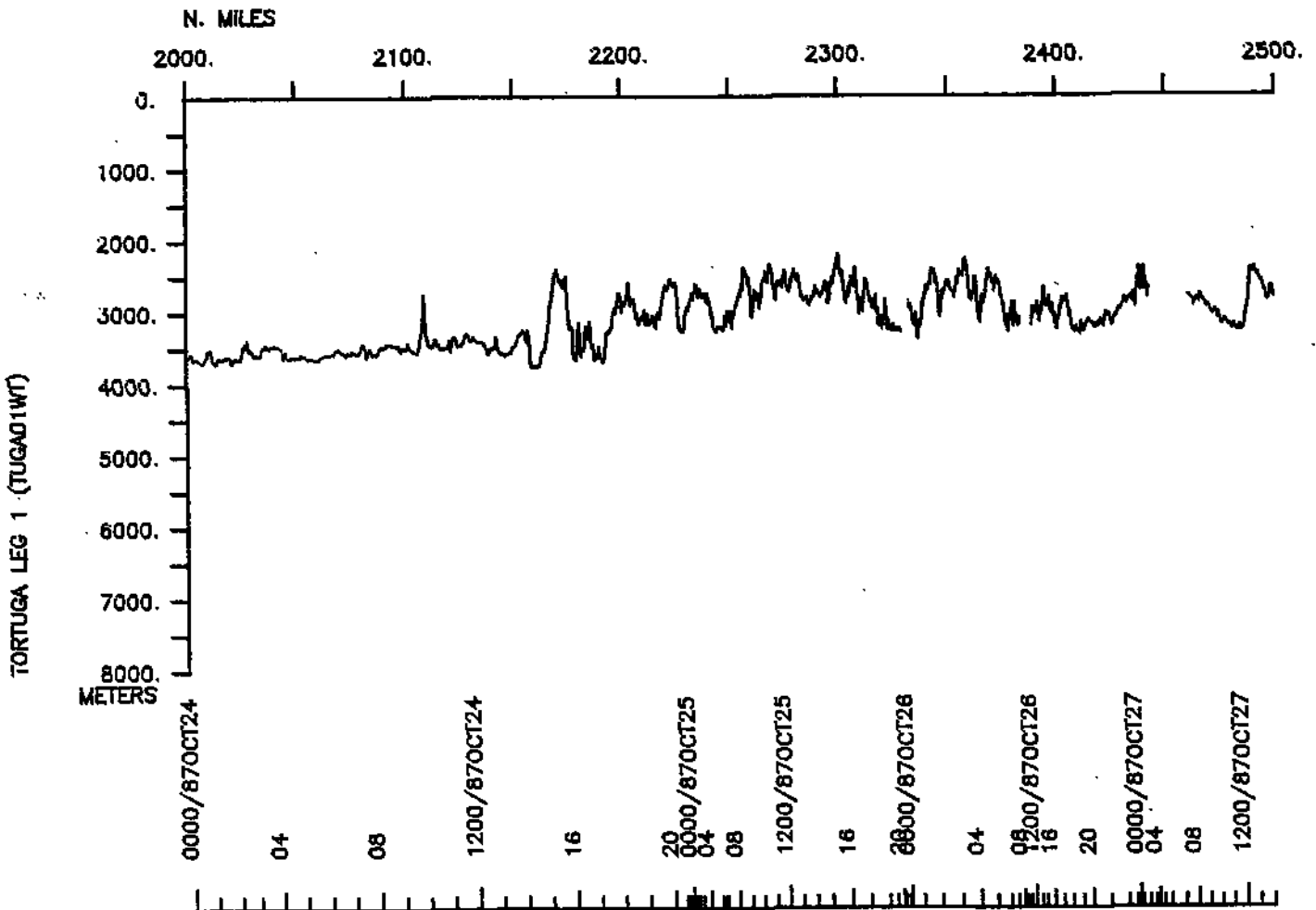
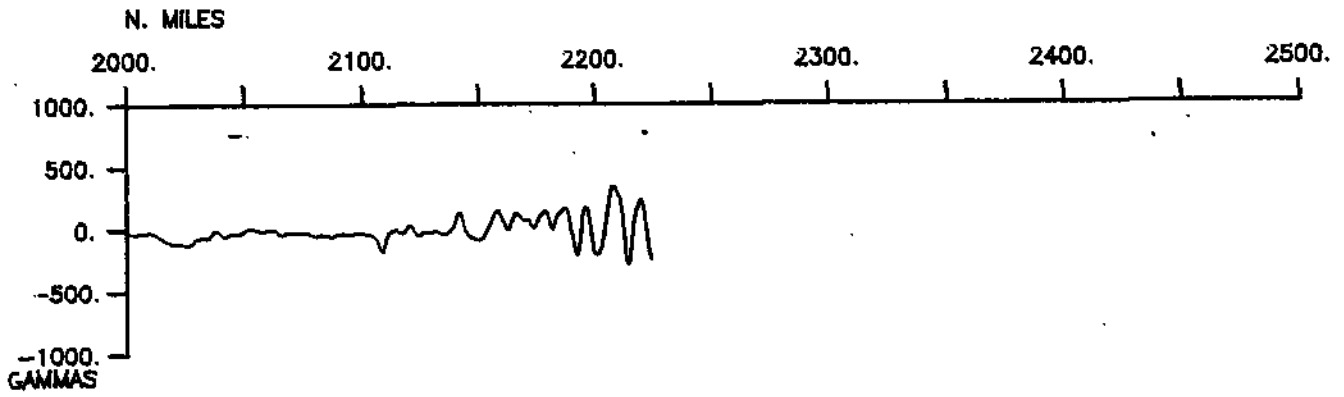
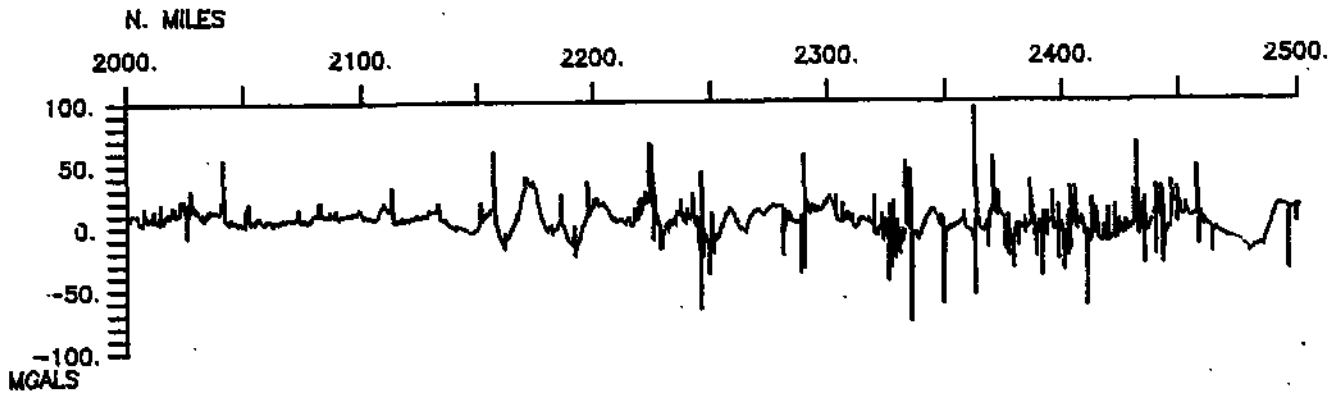


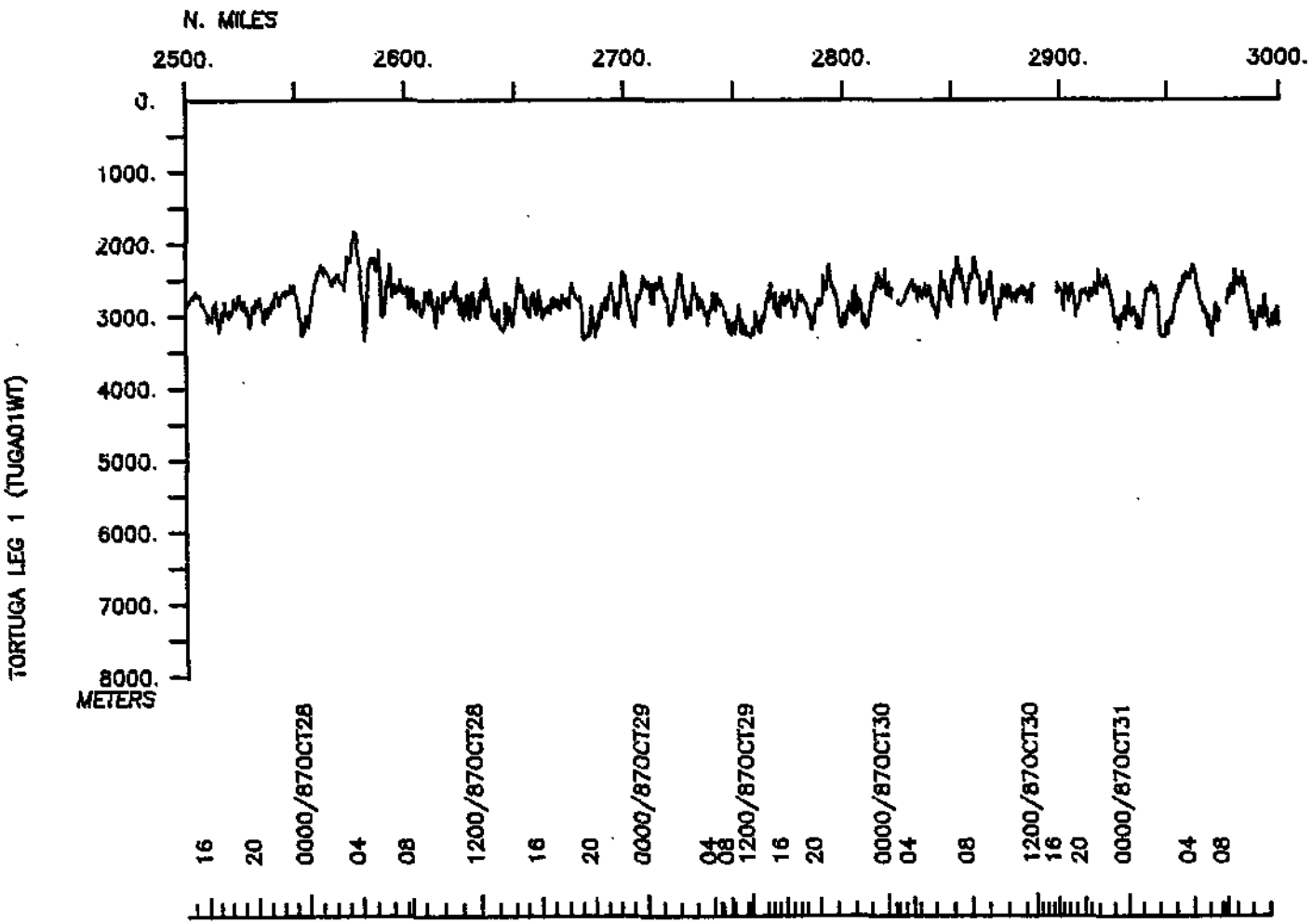
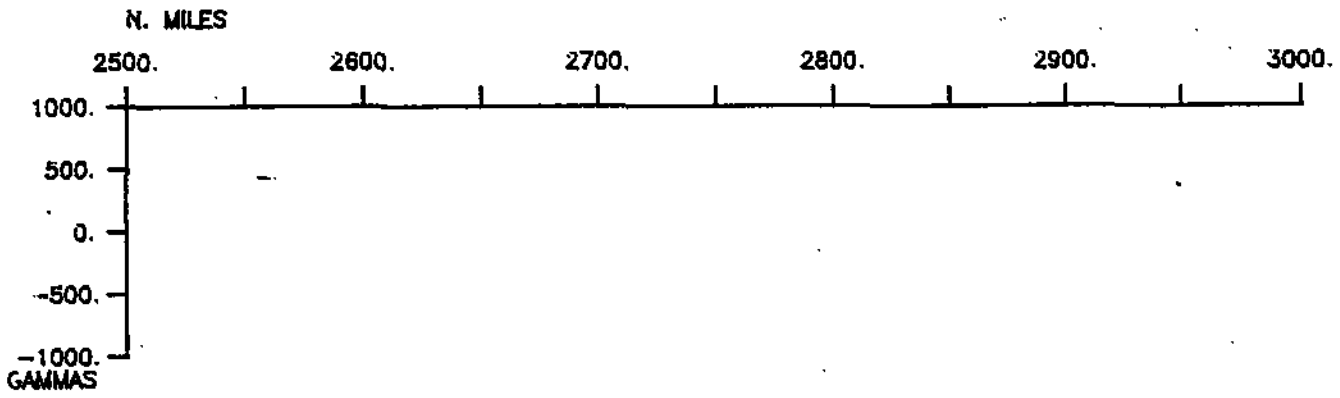
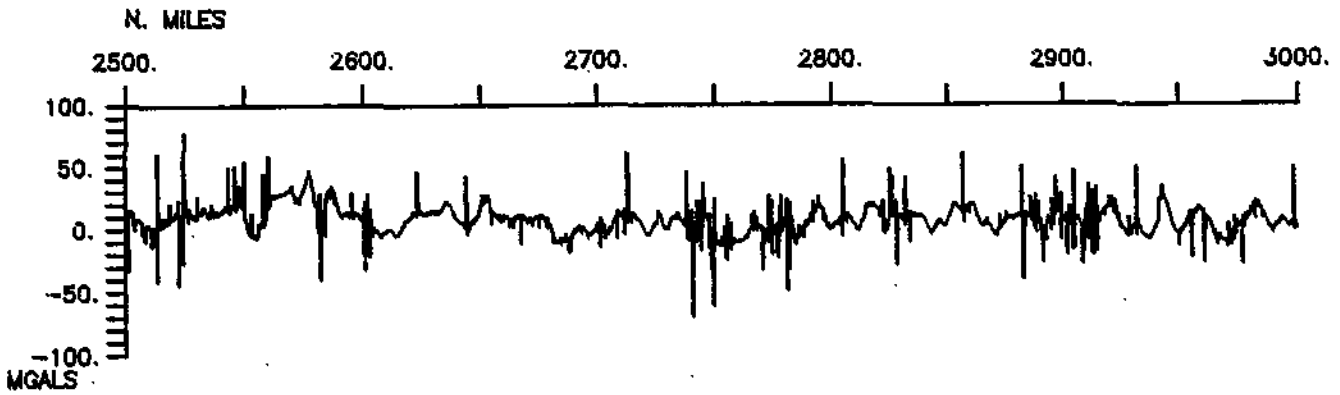
TORTUGA LEG 1 (TUGAO1WT)

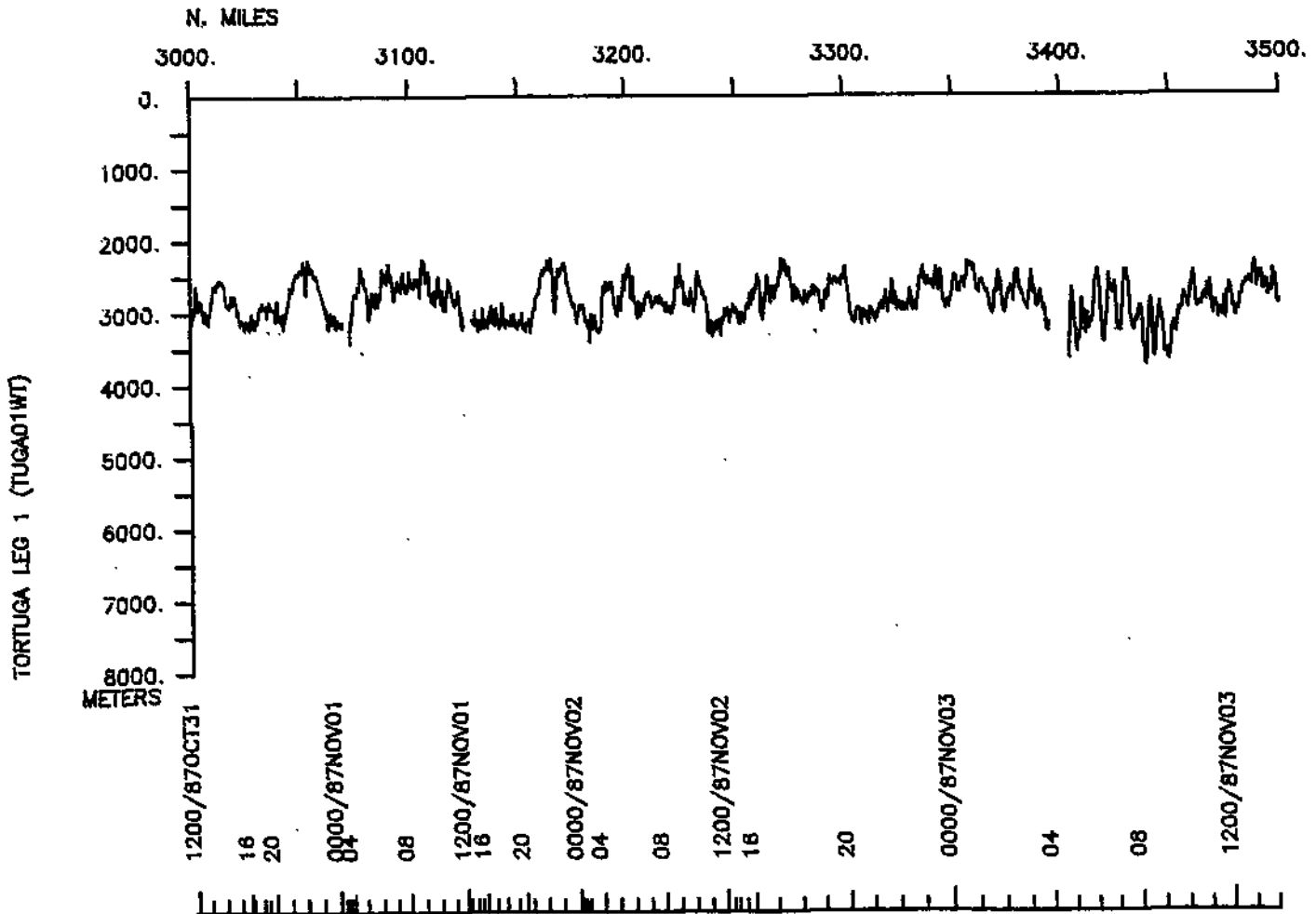
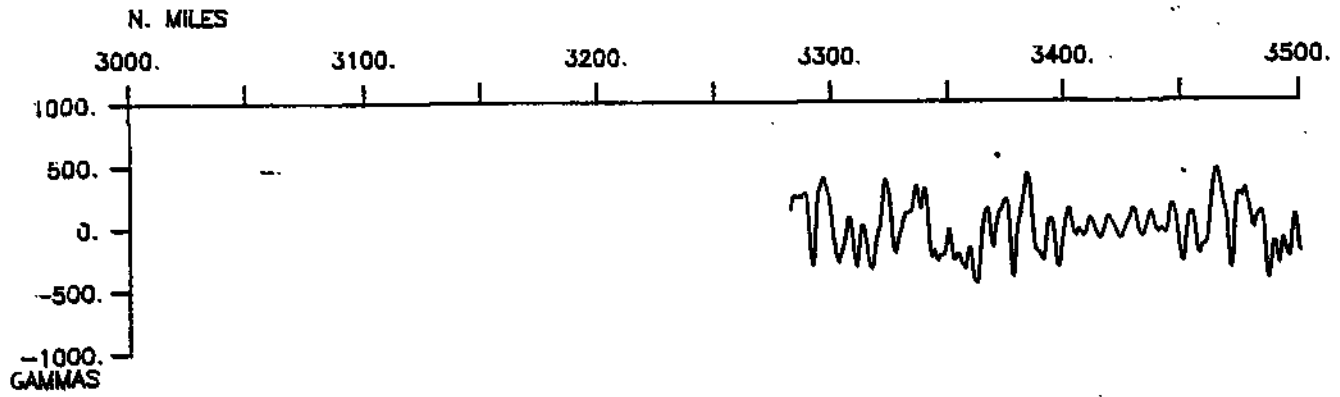




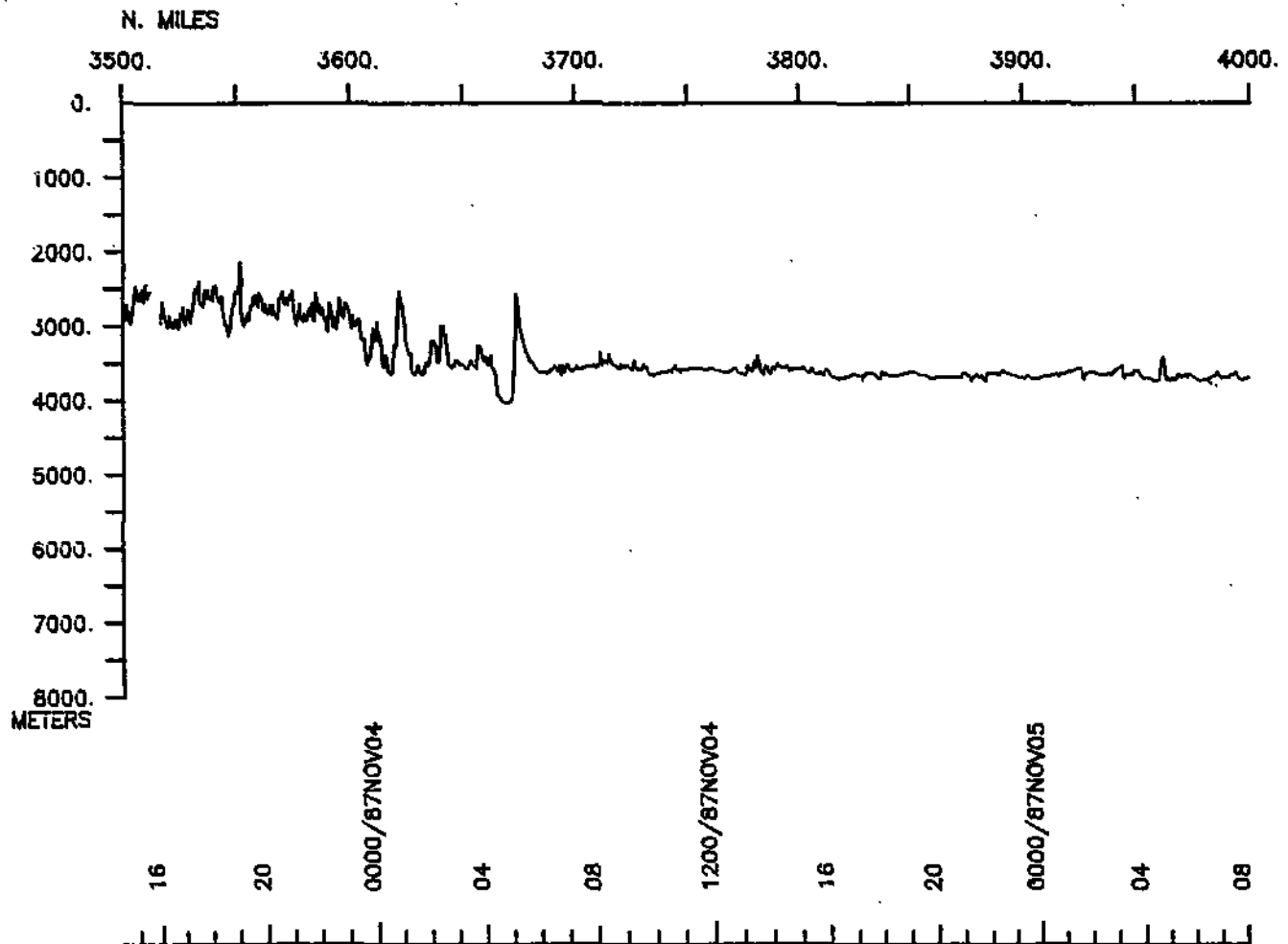
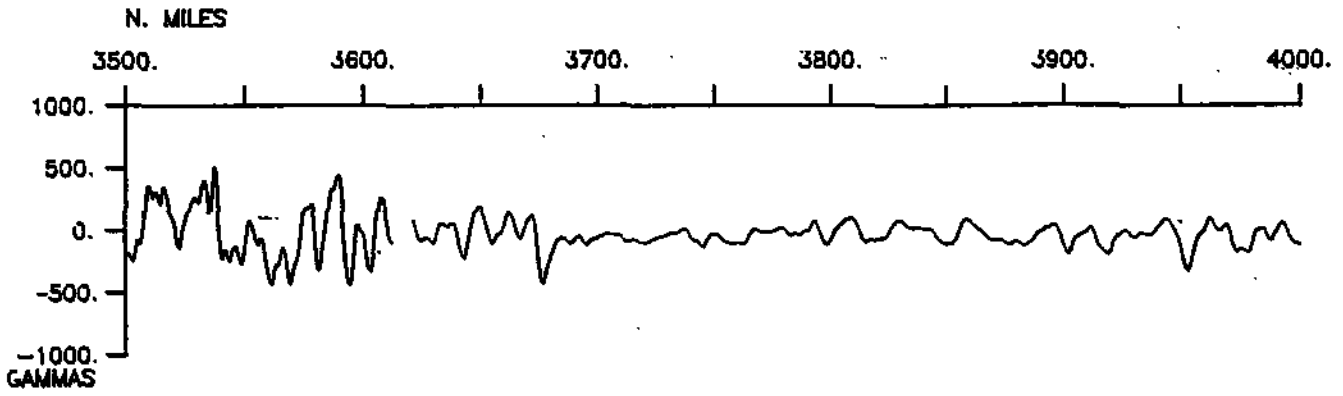
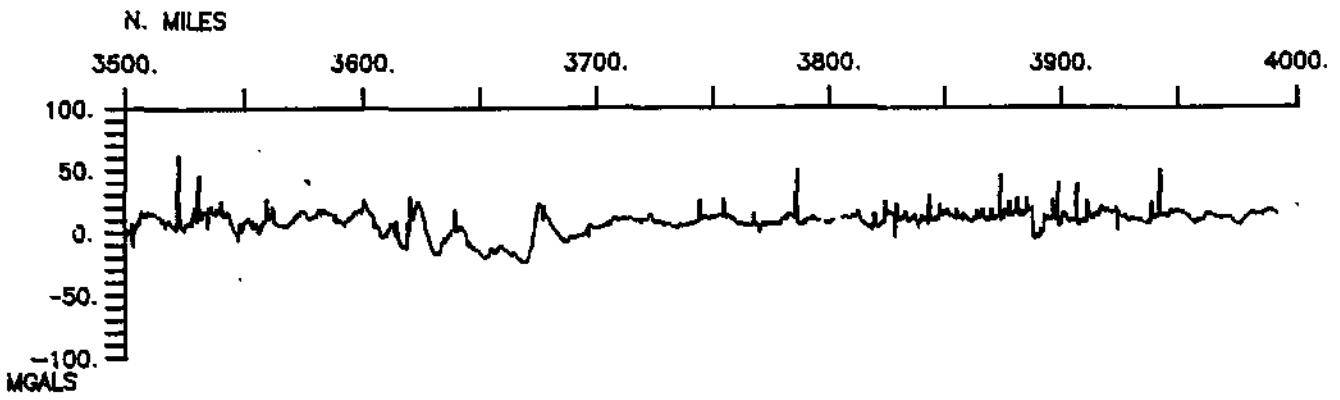
TORTUGA LEG 1 (TUGA01WT)



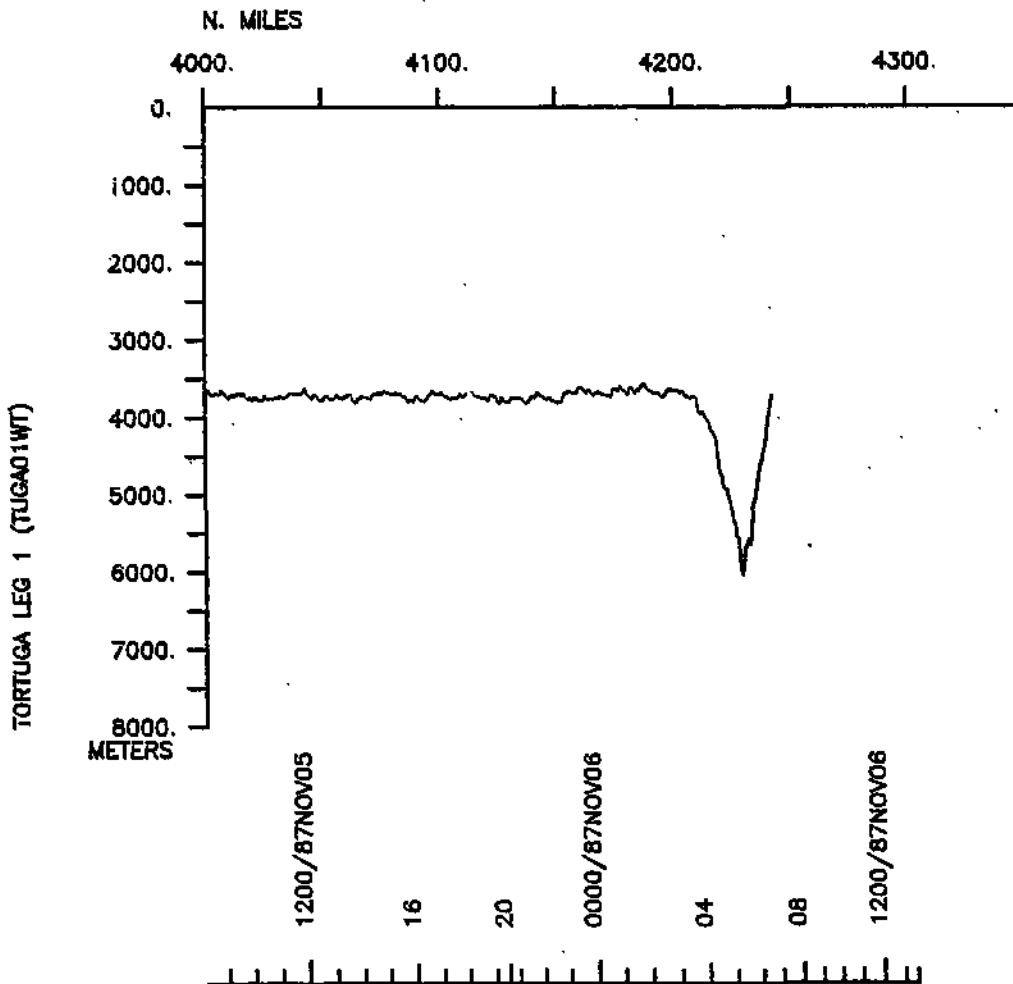
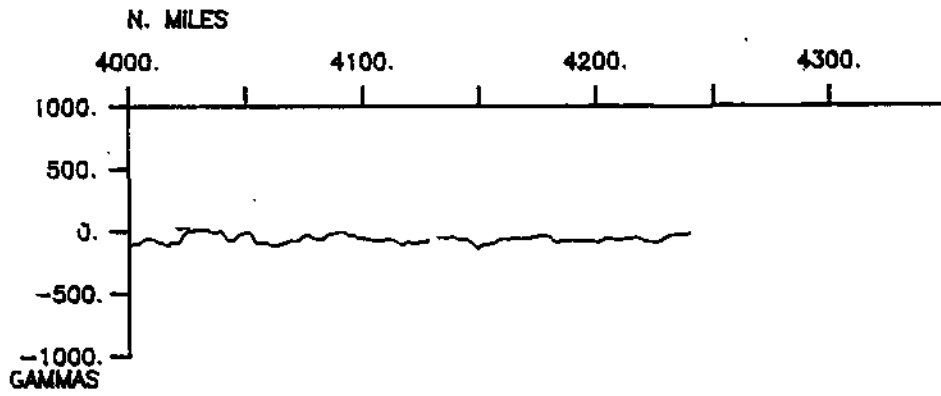




TORTUGA LEG 1 (TUGA01WT)



TORTUGA LEG 1 (TUGA01WT)



S.I.O. SAMPLE INDEX

(Issued April 1987)

TORTUGA EXPEDITION

Leg 1

San Diego, Calif. (16 October 1987)
to
Puerto Quetzal, Guatemala (6 November 1987)

R/V T. Washington

Chief Scientist - J. Orcutt (SIO)

The Sample Index is a first level interdisciplinary listing of time, position, sample identification and disposition of all samples, records and measurements collected on this cruise leg. The index data are encoded at sea by the resident marine technician and processed on shore by the S.I.O. Geological Data Center shortly after the completion of the cruise leg.

Positions are interpolated on the basis of sample time by comparison to a single, edited navigation file. Samples beginning at one time and position and ending at another are entered on two consecutive lines. Disposition and sample type are represented by three and four character codes to permit further computer searches on these parameters. (Listings defining these codes are available from the Geological Data Center.)

GDC Cruise I.D.# 232

**** PORTS ***

1500 161087	LGPT B SAN DIEGO, CALIFORNIA	32-43 N 117-11 W	fTUGA01WT
1400 061187	LGPT E PUERTO QUETZAL, GUATEMALA	13-554N 90-474W	sTUGA01WT

****PERSONNEL****

	NAME	***TITLE***	***AFFILIATION***	**CRID**
PECS IGP	ORCUTT, J. A.	CHIEF SCIENTIST	SCRIPPS INSTITUTION	TUGA01WT
PEST IGP	BURNETT, M. S.	GRAD STUDENT	SCRIPPS INSTITUTION	TUGA01WT
PEVL IGP	BRUNO, A. E.	VOLUNTEER	SCRIPPS INSTITUTION	TUGA01WT
PEST GRD	CARESS, D.	GRAD STUDENT	SCRIPPS INSTITUTION	TUGA01WT
PESP IGP	HEDLIN, M.	RESEARCH ASSIST.	SCRIPPS INSTITUTION	TUGA01WT
PEET IGP	HOLLISHEAD, C. B.	ELECT. TECH	SCRIPPS INSTITUTION	TUGA01WT
PESP IGP	KAPPUS, M.	RESEARCH ASSIST.	SCRIPPS INSTITUTION	TUGA01WT
PEST GRD	KIM, I.	GRAD STUDENT	SCRIPPS INSTITUTION	TUGA01WT
PESP IGP	LAHAV, D.	RESEARCH ASSIST.	SCRIPPS INSTITUTION	TUGA01WT
PESP IGP	LANCASTER, J.	ADMIN. ASSIST.	SCRIPPS INSTITUTION	TUGA01WT
PECT STS	MOE, R.	COMPUTER TECH	SCRIPPS INSTITUTION	TUGA01WT
PEBE STS	PHILLIPS, J.	SEABEAM ENGINEER	SCRIPPS INSTITUTION	TUGA01WT
PERT STS	PILLARD, E. G.	RESIDENT TECH.	SCRIPPS INSTITUTION	TUGA01WT
PEVL SIX	TOELKES, P.	VOLUNTEER-IGPP	SCRIPPS NON-EMPLOYEE	TUGA01WT
PEBO STS	SMITH, S.	SEABEAM OPERATOR	SCRIPPS INSTITUTION	TUGA01WT
PESP GRD	WILLOUGHBY, D. F.	DEV. ENGINEER	SCRIPPS INSTITUTION	TUGA01WT
PERT STS	WILSON, B. C.	SHOOTER	SCRIPPS INSTITUTION	TUGA01WT

****NOTES****

#AN 'X' IN THE (B)EGIN/(E)ND COLUMN FOLLOWING THE SAMPLE CODE INDICATES NO
 #SAMPLE OR DATA RECOVERED. A 'C' INDICATES CONTINUATION OF DATA COLLECTION
 #FROM BEFORE THE BEGINNING OR AFTER THE END OF A PARTICULAR LEG. (MOORED
 #BOTTOM INSTRUMENTS, FOR EXAMPLE.) THE NUMBER APPEARING IN THE COLUMNS
 #BETWEEN THE SAMPLE IDENTIFIER AND THE DISPOSITION CODE, FOR MANY SAMPLE
 #ENTRIES, IS THE WATER DEPTH IN CORRECTED METERS. POSITIONS ARE IN TENTHS
 #OF MINUTES.

#GMT	DDMMYY	LOC	T	SAMP	SAMPLE	DISP			CRUISE
#TIME	DATE	TIME	Z	CODE	IDENTIFIER	CODE	LAT.	LONG.	LEG-SHIP

***UNDERWAY DATA CURATOR - S. M. SMITH EXT. 42752

LOG BOOKS

0200	171087			LBUW	B UNDERWAY LOG BOOK	GDC	31-209N	117-003W	sTUGA01WT
0635	061187			LBUW	E UNDERWAY LOG BOOK	GDC	13-004N	91-115W	sTUGA01WT

*** ECHOSOUNDER RECORDS ***

0013	171087			MBRM	B SEABEAM MONITOR R-01	GDC	31-411N	117-035W	sTUGA01WT
0601	201087			MBRM	B SEABEAM MONITOR R-01	GDC	18-305N	108-373W	sTUGA01WT
0605	201087			MBRM	B SEABEAM MONITOR R-02	GDC	18-299N	108-368W	sTUGA01WT
2137	231087			MBRM	B SEABEAM MONITOR R-02	GDC	5-537N	98-069W	sTUGA01WT
2142	231087			MBRM	B SEABEAM MONITOR R-03	GDC	5-530N	98-063W	sTUGA01WT
0825	281087			MBRM	B SEABEAM MONITOR R-03	GDC	2-344N	95-077W	sTUGA01W
0831	281087			MBRM	B SEABEAM MONITOR R-04	GDC	2-351N	95-080W	sTUGA01WT
1150	011187			MBRM	B SEABEAM MONITOR R-04	GDC	2-336N	95-299W	sTUGA01WT
1331	011187			MBRM	B SEABEAM MONITOR R-05	GDC	2-336N	95-301W	sTUGA01WT
1916	041187			MBRM	B SEABEAM MONITOR R-05	GDC	7-019N	93-414W	sTUGA01WT
1921	041187			MBRM	B SEABEAM MONITOR R-06	GDC	7-028N	93-411W	sTUGA01WT
0635	061187			MBRM	B SEABEAM MONITOR R-06	GDC	13-004N	91-115W	sTUGA01WT

*** SEABEAM SWATH BOOKS ***

0013	171087			MBSB	B SEABEAM ARCHIVE	GDC	31-411N	117-035W	sTUGA01WT
1455	181087			MBSB	E SWATH BOOK 01	GDC	24-346N	114-040W	sTUGA01WT
1455	181087			MBSB	B SEABEAM ARCHIVE	GDC	24-346N	114-040W	sTUGA01WT
0506	201087			MBSB	E SWATH BOOK 02	GDC	18-385N	108-449W	sTUGA01WT
0508	201087			MBSB	B SEABEAM ARCHIVE	GDC	18-382N	108-446W	sTUGA01WT
0157	221087			MBSB	E SWATH BOOK 03	GDC	12-153N	103-223W	sTUGA01WT

#GMT #TIME #	DDMMYY DATE	LOC TIME Z	T	SAMP CODE	SAMPLE IDENTIFIER	DISP CODE	LAT.	LONG.	CRUISE LEG-SHIP
0158	221087			MBSB B	SEABEAM ARCHIVE	GDC	12-152N	103-222W	sTUGA01WT
2214	231087			MBSB E	SWATH BOOK 04	GDC	5-480N	98-024W	sTUGA01WT
2216	231087			MBSB B	SEABEAM ARCHIVE	GDC	5-477N	98-022W	sTUGA01WT
2143	261087			MBSB E	SWATH BOOK 05	GDC	2-373N	95-111W	sTUGA01WT
2143	261087			MBSB B	SEABEAM ARCHIVE	GDC	2-373N	95-111W	sTUGA01WT
1822	301087			MBSB E	SWATH BOOK 06	GDC	2-306N	95-328W	sTUGA01WT
1822	301087			MBSB B	SEABEAM ARCHIVE	GDC	2-306N	95-328W	sTUGA01WT
0045	021187			MBSB E	SWATH BOOK 07	GDC	2-321N	95-274W	sTUGA01WT
0045	021187			MBSB B	SEABEAM ARCHIVE	GDC	2-321N	95-274W	sTUGA01WT
1620	041187			MBSB E	SWATH BOOK 08	GDC	6-285N	93-521W	sTUGA01WT
1620	041187			MBSB B	SEABEAM ARCHIVE	GDC	6-285N	93-521W	sTUGA01WT
035	061187			MBSB E	SWATH BOOK 09	GDC	13-004N	91-115W	sTUGA01WT

**** SEABEAM TRANSIT LINES ****

0013	171087			MBTL B	SEABEAM TRANSIT 01	GDC	31-411N	117-035W	sTUGA01WT
2006	241087			MBTL E	SEABEAM TRANSIT 01	GDC	2-408N	95-290W	sTUGA01WT
1630	031187			MBTL B	SEABEAM TRANSIT 02	GDC	1-559N	95-476W	sTUGA01WT
0635	061187			MBTL E	SEABEAM TRANSIT 02	GDC	13-004N	91-115W	sTUGA01WT

**** SEABEAM SURVEY ****

2006	241087			MBSV B	SEABEAM SURVEY 01	GDC	2-408N	95-290W	sTUGA01WT
1630	031187			MBSV E	SEABEAM SURVEY 01	GDC	1-559N	95-476W	sTUGA01WT

**** THERMOGRAPH RECORDINGS ****

1500	171087			TCRC B	THERMOGRAPHS 1-11	GDC	28-430N	116-362W	sTUGA01WT
1400	061187			TCRC E	THERMOGRAPHS 1-11	GDC	13-554N	90-474W	sTUGA01WT

#GMT #TIME #	DDMMYY DATE	LOC TIME Z	T Z	SAMP CODE	SAMPLE IDENTIFIER	DISP CODE	LAT.	LONG.	CRUISE LEG-SHIP
--------------------	----------------	------------------	--------	--------------	----------------------	--------------	------	-------	--------------------

**** MAGNETIC (EARTH TOTAL FIELD) RECORDINGS ****

0200	171087			MGRA B	MAGNETICS R-01	GDC 31-209N	117-003W		sTUGA01WT
0612	061187			MGRA E	MAGNETICS R-01	GDC 12-579N	91-124W		sTUGA01WT

**** GRAVIMETER ****

0200	171087			GV** B	GRAVITY DATA	GDC 31-209N	117-003W		sTUGA01WT
1400	061187			GV** C	COMPUTER STORED	GDC 13-554N	90-474W		sTUGA01WT

**** SEISMIC BOUY OCEAN FLOOR HYDROPHONE ****

2049	241087			SBOH B	SEAFLOOR HYDROPHONE	IGP 2-381N	95-270W		sTUGA01WT
1400	061187			SBOH C	SEISMIC BOUY	IGP 13-554N	90-474W		sTUGA01WT

**** COMPLEX SEISMIC RUNS ****

0700	271087			SRCS B	SEIS. RUN TUGA01-1	IGP 2-355N	94-593W		sTUGA01WT
1615	271087			SRCS E	RV,EX,HS,OB,AD	IGP 2-413N	95-533W		sTUGA01WT
1900	271087			SRCS B	SEIS. RUN TUGA01-2	IGP 2-493N	95-506W		sTUGA01WT
0415	281087			SRCS E	SP,EX,HS,OB,AD	IGP 2-162N	95-065W		sTUGA01WT
1500	281087			SRCS B	SEIS. RUN TUGA01-3	IGP 3-020N	95-139W		sTUGA01WT
0015	291087			SRCS E	SP,EX,HS,OB,AD	IGP 2-119N	95-398W		sTUGA01WT

**** CURRENT METERS ****

2305	191087			CMRT B	CURRENT DRIFTER	NPX 19-356N	109-312W		sTUGA01WT
1400	061187			CMRT C	SATELLITE TRACKED	NPX 13-554N	90-474W		sTUGA01WT

#GMT	DDMMYY	LOC	T	SAMP	SAMPLE	DISP	LAT.	LONG.	CRUISE
#TIME	DATE	TIME	Z	CODE	IDENTIFIER	CODE			LEG-SHIP

**** OCEAN BOTTOM SEISMOMETERS ***

2100	231087			SBOB	B OCEAN BOTTOM #1	IGP	5-594N	98-117W	sTUGA01WT
1137	291087			SBOB	E SEISMOMETER "JANICE"	IGP	2-383N	95-272W	sTUGA01WT
0755	261087			SBOB	B OCEAN BOTTOM #2	IGP	2-327N	95-299W	sTUGA01WT
0852	291087			SBOB	E SEISMOMETER "JUAN"	IGP	2-335N	95-282W	sTUGA01WT
0240	271087			SBOB	B OCEAN BOTTOM #3	IGP	2-344N	95-072W	sTUGA01WT
0805	281087			SBOB	E SEISMOMETER "LYNN"	IGP	2-341N	95-073W	sTUGA01WT
0606	291087			SBOB	B OCEAN BOTTOM #7M	IGP	2-310N	95-288W	sTUGA01WT
1400	061187			SBOB	E SEISMOMETER "LYNN"	IGP	13-554N	90-474W	sTUGA01WT
0042	301087			SBOB	B OCEAN BOTTOM #2M	IGP	2-352N	95-315W	sTUGA01WT
1400	061187			SBOB	C SEISMOMETER "JANICE"	IGP	2-353N	95-315W	sTUGA01WT
1157	301087			SBOB	B OCEAN BOTTOM #6M	IGP	2-315N	95-316W	sTUGA01WT
1400	061187			SBOB	C SEISMOMETER "JAUN"	IGP	2-315N	95-316W	sTUGA01WT
0612	311087			SBOB	B OCEAN BOTTOM #1M	IGP	2-374N	95-298W	sTUGA01WT
1400	061187			SBOB	C SEISMOMETER "SUZY"	IGP	2-374N	95-298W	sTUGA01WT
0162	011187			SBOB	B OCEAN BOTTOM #3M	IGP	2-353N	95-256W	sTUGA01WT
1400	061187			SBOB	C SEISMOMETER "KAREN"	IGP	2-353N	95-256W	sTUGA01WT
1204	011187			SBOB	B OCEAN BOTTOM #4M	IGP	2-331N	95-299W	sTUGA01WT
1400	061187			SBOB	C SEISMOMETER "PHRED"	IGP	2-331N	95-299W	sTUGA01WT
0018	021187			SBOB	B OCEAN BOTTOM #5M	IGP	2-323N	95-271W	sTUGA01WT
1400	061187			SBOB	C SEISMOMETER "JUDY"	IGP	2-323N	95-271W	sTUGA01WT

**** EXPENDABLE BATHY THERMOGRAPHS **

0250	171087			BTXP	XBT 0001 PROBE T-4	GDC	31-071N	116-580W	ftUGA01WT
1506	171087			BTXP	XBT 0002 PROBE T-4	GDC	28-420N	116-336W	ftUGA01WT
0250	181087			BTXP	XBT 0004 PROBE T-4	GDC	26-369N	115-273W	ftUGA01WT
1452	181087			BTXP	XBT 0005 PROBE T-4	GDC	24-349N	114-033W	ftUGA01WT

#GMT #TIME	DDMMYY DATE	LOC T TIME Z	SAMP CODE	SAMPLE IDENTIFIER		DISP CODE	LAT.	LONG.	CRUISE LEG-SHIP
0252	191087		BTXP	XBT 0006 PROBE	T-4	GDC	22-435N	112-157W	FTUGAO1WT
1453	191087		BTXP	XBT 0007 PROBE	T-4	GDC	20-529N	110-373W	FTUGAO1WT
0120	201087		BTXP	XBT 0008 PROBE	T-4	GDC	19-138N	109-144W	FTUGAO1WT
0653	201087		BTXP	XBT 0009 PROBE	T-4	GDC	18-213N	108-296W	FTUGAO1WT
1249	201087		BTXP	XBT 0010 PROBE	T-4	GDC	17-284N	107-467W	FTUGAO1WT
1857	201087		BTXP	XBT 0011 PROBE	T-4	GDC	16-368N	107-015W	FTUGAO1WT
0054	211087		BTXP	XBT 0013 PROBE	T-4	GDC	15-431N	106-153W	FTUGAO1WT
0652	211087		BTXP	XBT 0014 PROBE	T-4	GDC	14-501N	105-316W	FTUGAO1WT
1313	211087		BTXP	XBT 0015 PROBE	T-4	GDC	13-573N	104-453W	FTUGAO1WT
1917	211087		BTXP	XBT 0018 PROBE	T-4	GDC	13-112N	104-060W	FTUGAO1WT
0054	221087		BTXP	XBT 0019 PROBE	T-4	GDC	12-248N	103-292W	FTUGAO1WT
0653	221087		BTXP	XBT 0020 PROBE	T-4	GDC	11-332N	102-481W	FTUGAO1WT
1254	221087		BTXP	XBT 0021 PROBE	T-4	GDC	10-386N	102-013W	FTUGAO1WT
1859	221087		BTXP	XBT 0022 PROBE	T-4	GDC	9-466N	101-196W	FTUGAO1WT
0101	231087		BTXP	XBT 0023 PROBE	T-4	GDC	8-563N	100-375W	FTUGAO1WT
0651	231087		BTXP	XBT 0024 PROBE	T-4	GDC	8-064N	99-583W	FTUGAO1WT
1248	231087		BTXP	XBT 0025 PROBE	T-4	GDC	7-159N	99-134W	FTUGAO1WT
1804	231087		BTXP	XBT 0026 PROBE	T-4	GDC	6-278N	98-330W	FTUGAO1W
0004	241087		BTXP	XBT 0027 PROBE	T-4	GDC	5-322N	97-494W	FTUGAO1WT
0012	241087		BTXP	XBT 0028 PROBE	T-4	GDC	5-310N	97-484W	FTUGAO1WT
0559	241087		BTXP	XBT 0029 PROBE	T-4	GDC	4-434N	97-095W	FTUGAO1WT
1202	241087		BTXP	XBT 0030 PROBE	T-4	GDC	3-500N	96-264W	FTUGAO1WT
1756	241087		BTXP	XBT 0031 PROBE	T-4	GDC	2-599N	95-441W	FTUGAO1WT
2358	241087		BTXP	XBT 0032 PROBE	T-4	GDC	2-349N	95-261W	FTUGAO1WT
1400	251087		BTXP	XBT 0033 PROBE	T-4	GDC	2-049N	95-369W	FTUGAO1WT
0200	261087		BTXP	XBT 0034 PROBE	T-4	GDC	2-248N	95-268W	FTUGAO1WT
1357	261087		BTXP	XBT 0035 PROBE	T-4	GDC	2-323N	95-305W	FTUGAO1WT
0315	271087		BTXP	XBT 0036 PROBE	T-4	GDC	2-349N	95-065W	FTUGAO1WT
1414	271087		BTXP	XBT 0037 PROBE	T-4	GDC	2-394N	95-409W	FTUGAO1WT
0209	281087		BTXP	XBT 0038 PROBE	T-4	GDC	2-247N	95-155W	FTUGAO1WT
1355	281087		BTXP	XBT 0039 PROBE	T-4	GDC	3-078N	95-138W	FTUGAO1WT
0159	291087		BTXP	XBT 0040 PROBE	T-4	GDC	2-211N	95-345W	FTUGAO1WT
1502	291087		BTXP	XBT 0041 PROBE	T-4	GDC	2-308N	95-273W	FTUGAO1WT
0549	301087		BTXP	XBT 0042 PROBE	T-4	GDC	2-279N	95-328W	FTUGAO1WT
1415	301087		BTXP	XBT 0043 PROBE	T-4	GDC	2-308N	95-332W	FTUGAO1WT
0155	311087		BTXP	XBT 0044 PROBE	T-4	GDC	2-403N	95-303W	FTUGAO1WT
1407	311087		BTXP	XBT 0045 PROBE	T-4	GDC	2-391N	95-297W	FTUGAO1WT

#GMT #TIME	DDMMYY DATE	LOC TIME	T Z	SAMP CODE	SAMPLE IDENTIFIER	DISP CODE	LAT.	LONG.	CRUISE LEG-SHIP
0150	011187			BTXP	XBT 0046 PROBE T-4	GDC	2-324N	95-231W	FTUGA01WT
1401	011187			BTXP	XBT 0047 PROBE T-4	GDC	2-327N	95-299W	FTUGA01WT
0150	021187			BTXP	XBT 0048 PROBE T-4	GDC	2-311N	95-276W	FTUGA01WT
1431	021187			BTXP	XBT 0049 PROBE T-4	GDC	2-325N	95-264W	FTUGA01WT
0159	031187			BTXP	XBT 0050 PROBE T-4	GDC	2-417N	95-402W	FTUGA01WT
1157	031187			BTXP	XBT 0051 PROBE T-4	GDC	2-391N	95-479W	FTUGA01WT
1855	031187			BTXP	XBT 0052 PROBE T-4	GDC	2-198N	95-346W	FTUGA01WT
0050	041187			BTXP	XBT 0053 PROBE T-4	GDC	3-288N	95-095W	FTUGA01WT
0556	041187			BTXP	XBT 0054 PROBE T-4	GDC	4-271N	94-482W	FTUGA01WT
1243	041187			BTXP	XBT 0055 PROBE T-4	GDC	5-469N	94-125W	FTUGA01WT
1805	041187			BTXP	XBT 0056 PROBE T-4	GDC	6-532N	93-454W	FTUGA01WT
2339	041187			BTXP	XBT 0057 PROBE T-4	GDC	7-512N	93-203W	FTUGA01WT
0553	051187			BTXP	XBT 0058 PROBE T-4	GDC	8-563N	92-510W	FTUGA01WT
1259	051187			BTXP	XBT 0059 PROBE T-4	GDC	10-107N	92-208W	FTUGA01WT
1802	051187			BTXP	XBT 0060 PROBE T-4	GDC	11-001N	91-534W	FTUGA01WT
1809	051187			BTXP	XBT 0061 PROBE T-4	GDC	11-010N	91-529W	FTUGA01WT
2356	051187			BTXP	XBT 0062 PROBE T-4	GDC	11-501N	91-405W	FTUGA01WT
0005	061187			BTXP	XBT 0063 PROBE T-4	GDC	12-571N	91-125W	FTUGA01WT

END SAMPLE INDEX ****