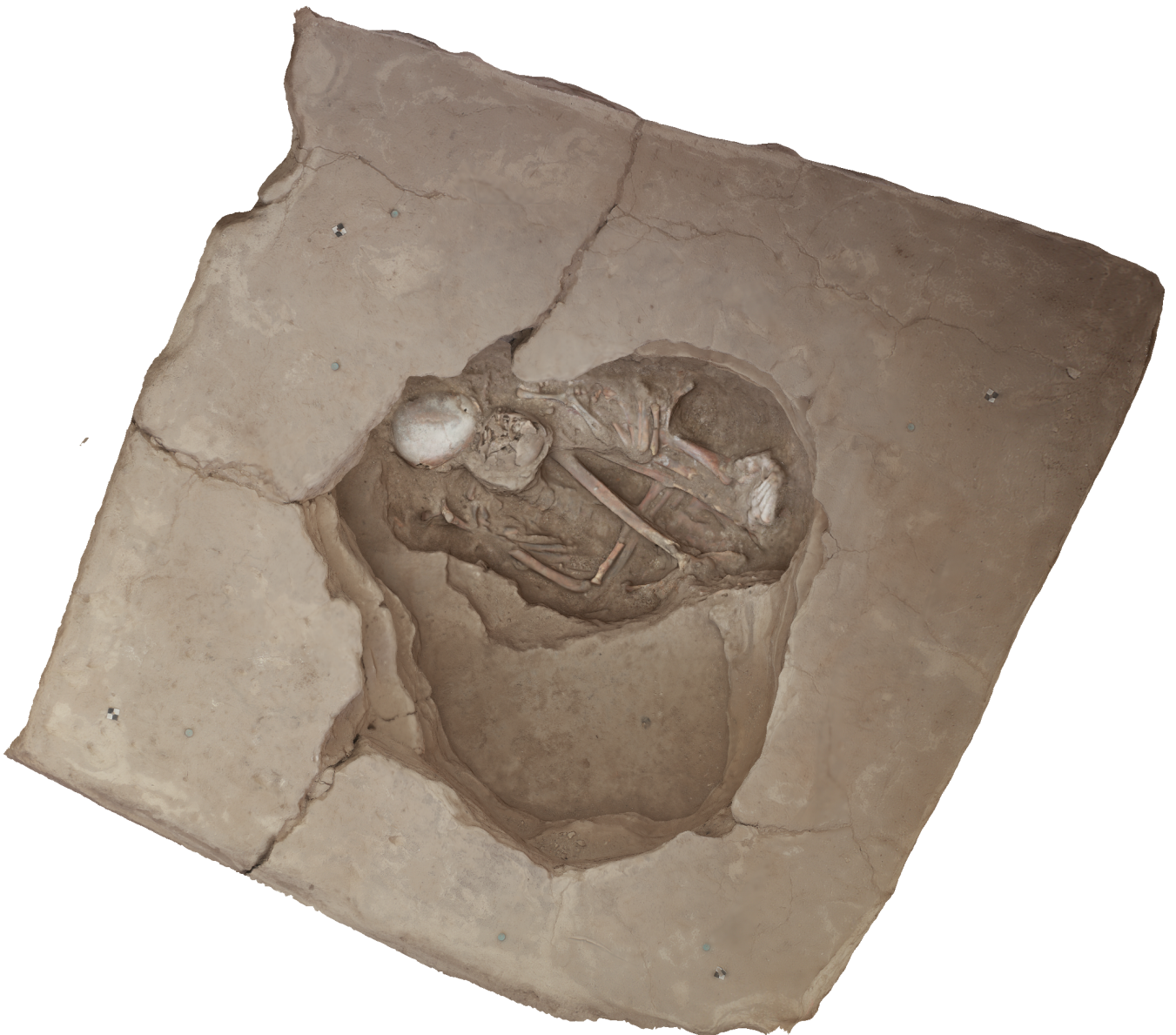


Agisoft PhotoScan

Processing Report
06 November 2014



Survey Data

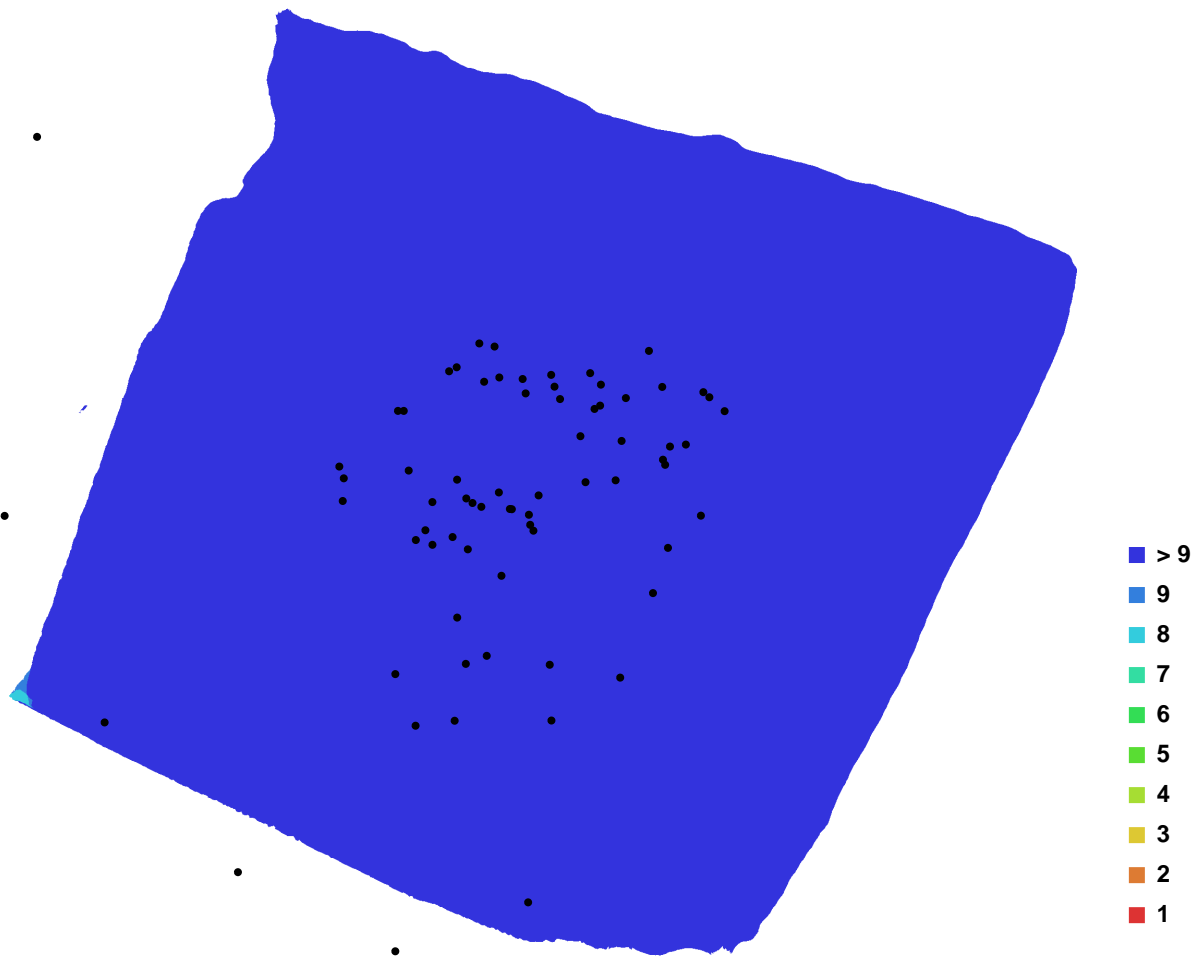


Fig. 1. Camera locations and image overlap.

Number of images:	91	Camera stations:	89
Flying altitude:	1.07625 m	Tie-points:	318538
Ground resolution:	0.000216208 m/pix	Projections:	985375
Coverage area:	2.43905e-006 sq km	Error:	0.988495 pix

Camera Model	Resolution	Focal Length	Pixel Size	Precalibrated
Canon EOS M (20 mm)	5184 x 3456	20 mm	4.384 x 4.384 um	No

Table. 1. Cameras.

Digital Elevation Model

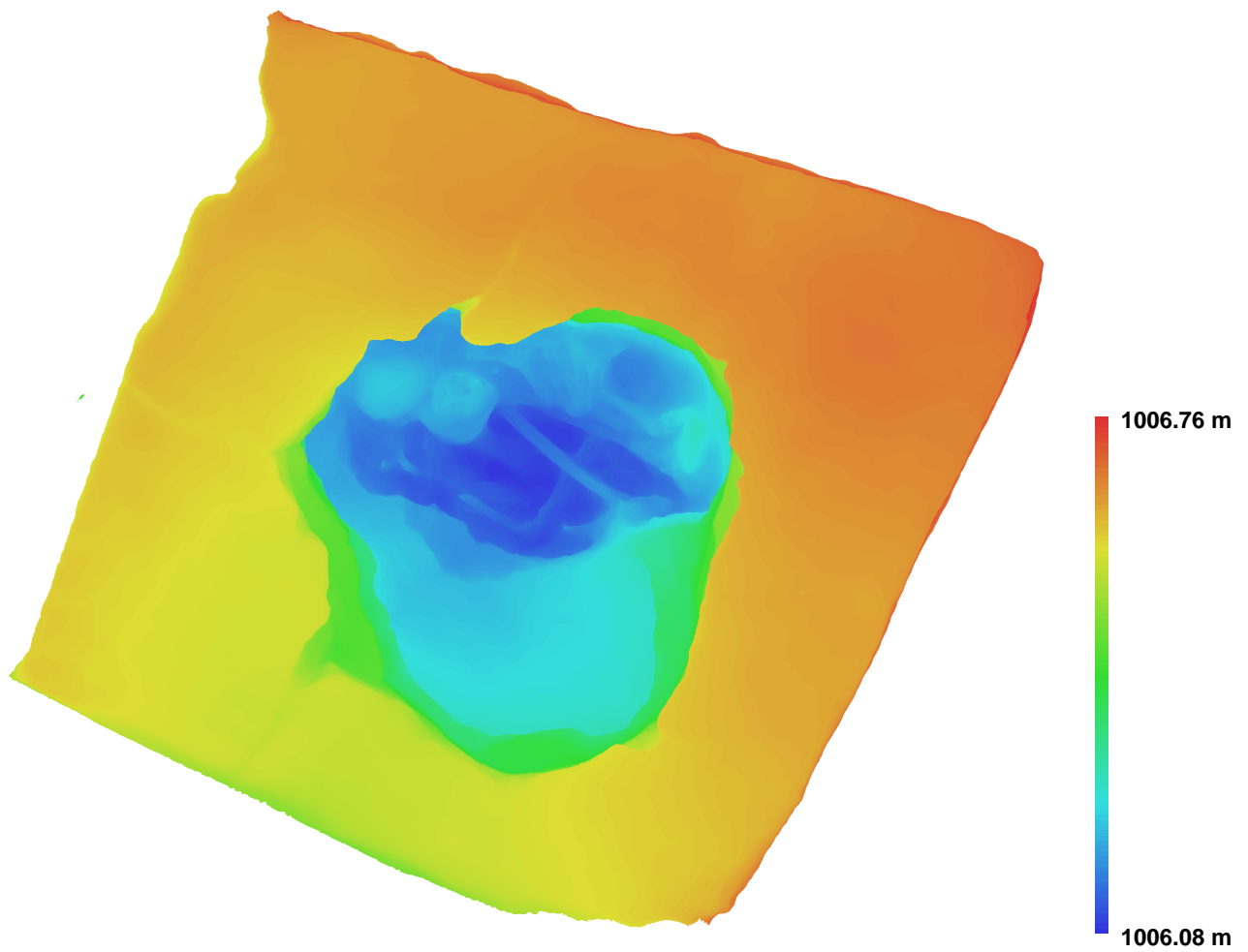


Fig. 2. Reconstructed digital elevation model.

Resolution: 0.000864832 m/pix
Point density: 1.33702e+006 points per sq m