

*REPORT AND INDEX OF  
UNDERWAY MARINE GEOPHYSICAL DATA*  
**Littoral Water Advanced Development  
(LWAD99MV)**

R/V Melville

(Issued February 2000)

**Ports:**

San Diego, California (05 September 1999)  
to  
San Diego, California (20 September 1999)

**Co-Chief Scientists:**

James McEachern, Naval Air Warfare Center  
email: mceachernjf@navair.navy.mil  
Fred Erskine, Naval Research Lab.

Computer Technician - Jim Charters  
Resident Marine Tech - Ron Comer

Post-Cruise Processing and Report Preparation by the  
Geological Data Center, Scripps Institution of Oceanography  
La Jolla, California 92093-0223

**NOTE:** *This is an index of underway geophysical data edited and processed after the completion of the cruise leg and is intended primarily for informal use within the institution. This document is not to be reproduced or distributed outside Scripps without prior approval of the chief scientist or the Geological Data Center, Scripps Institution of Oceanography, La Jolla, California 92093-0223*

GDC Cruise I.D. #290

**REPORT AND INDEX OF NAVIGATION  
AND UNDERWAY GEOPHYSICAL DATA**

Processed by the Geological Data Center  
Scripps Institution of Oceanography

**Contents:**

**Index Chart** - gives track of cruise leg, dates, ports, and mileage of each type of data collected.

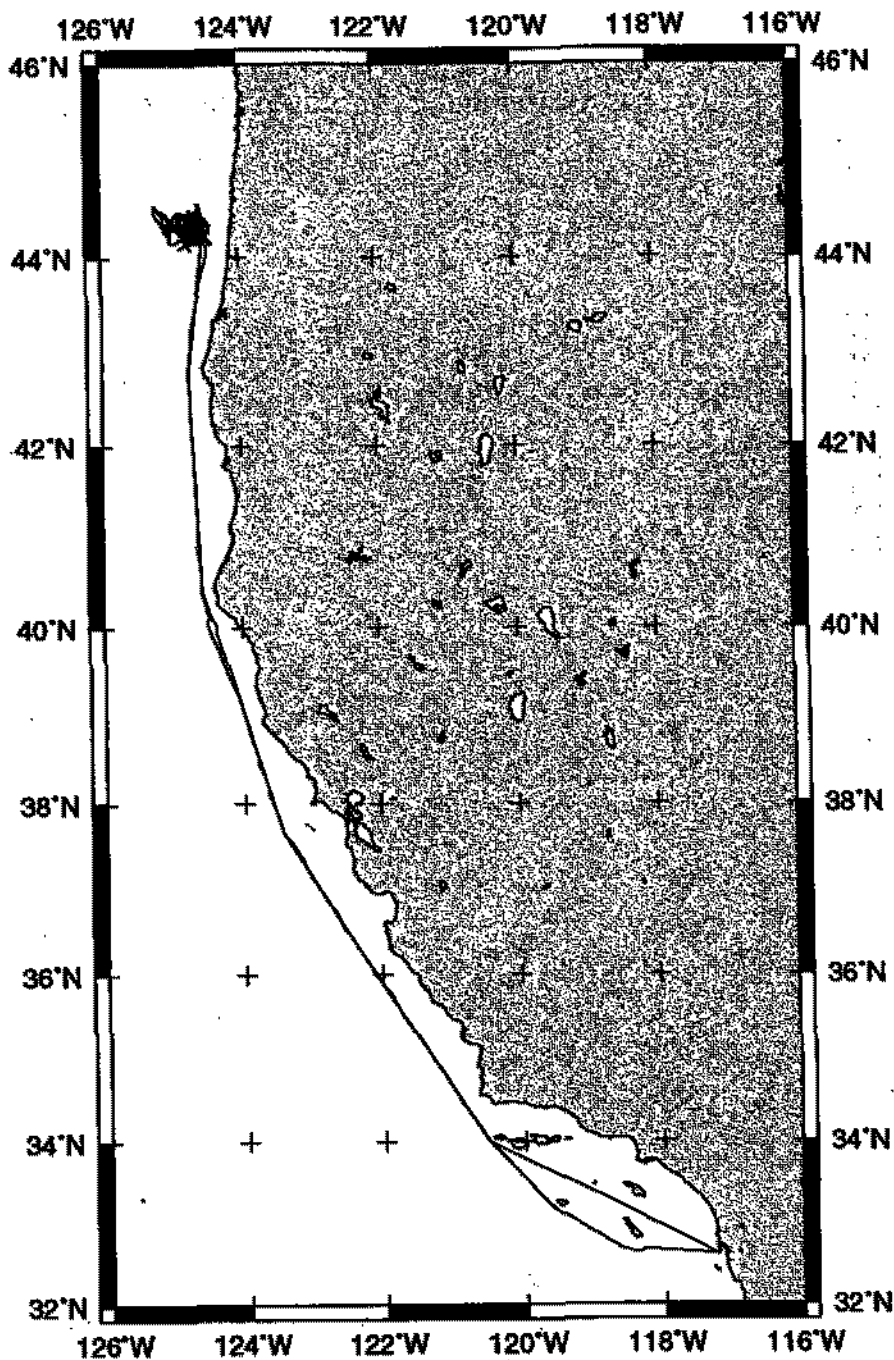
**Track Charts** - annotated with dates and hour ticks.

**Profiles** - depth, magnetic and gravity free air anomaly vs. distance. (Sections of track with seismic reflection data have a wide black line along the bottom of the profile.)

**Sample Index** - list of begin/end times and positions of all underway records as well as samples and measurements from other disciplines collected on the leg.

**NOTE:** One or more of the underway data types may not be collected on a given leg. For information on the availability and reproduction costs of data in the following forms, contact S.M. Smith, Curator, Geological Data Center, Scripps Institution of Oceanography, La Jolla, California 92093-0223. Phone: (619)534-2752, FAX: (619)534-6500, Internet email: [ssmith@ucsd.edu](mailto:ssmith@ucsd.edu)

1. Files via ftp or on 8mm (Exabyte) and 4mm (DAT) magnetic tape:
  - a) Separate time series ASCII files of navigation, single beam depth, gravity and magnetics.
  - b) Above data in a single merged ASCII file in the MGD77 Exchange Format.
  - c) SeaBeam depth data (binary, Sun byte order)
  - d) SeaBeam Sidescan data.
  
2. Microfilm (35 mm flowfilm) or hard copies of:
  - a) Underway watch log book.
  - b) SeaBeam vertical beam profile/Sidescan records.
  - c) 3.5 kHz and 12 kHz echosounder records.
  - d) Seismic reflection profiler records.
  
3. Navigation listing with times and positions of fixes and course and speed changes.
  
4. Custom plots in Mercator projection:
  - a) Track plots.
  - b) SeaBeam depth contour plots.
  - c) Depth, magnetic or gravity values printed or profiled along track.



**Littoral Water Advanced Development (LWAD99MV)**

**CO-CHIEF SCIENTISTS:** James McEachern, Naval Air Warfare Center

Fred T. Erskine, Applied Physics Lab., Univ. of Washington

**PORTS:** San Diego - San Diego, California

**DATES:** 05 - 20 September 1999

**SHIP:** R/V Melville

**TOTAL MILEAGE OF UNDERWAY DATA COLLECTED**

**Cruise - 2753 miles**

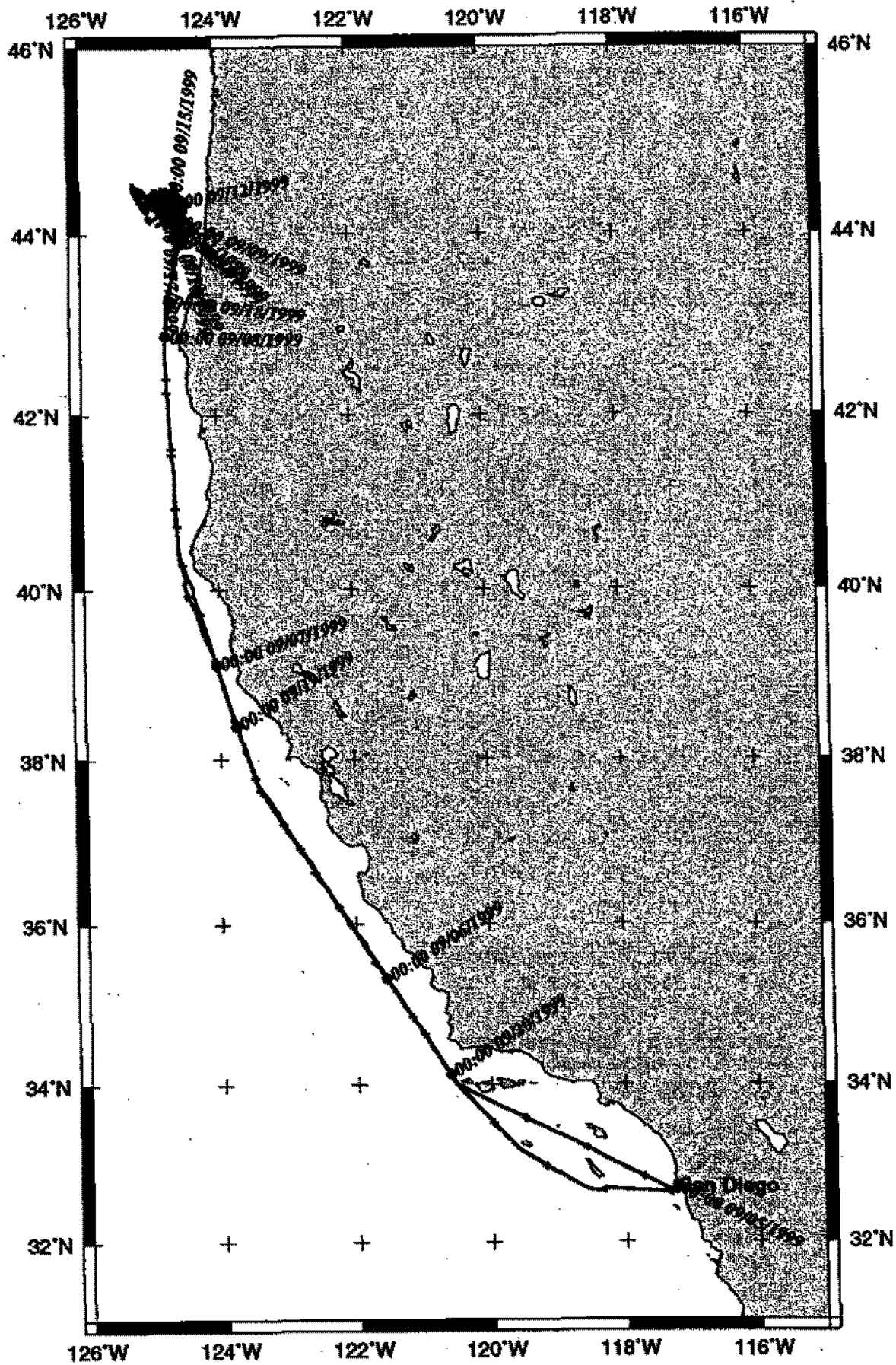
**Magnetics - none collected**

**Bathymetry - 2557 miles**

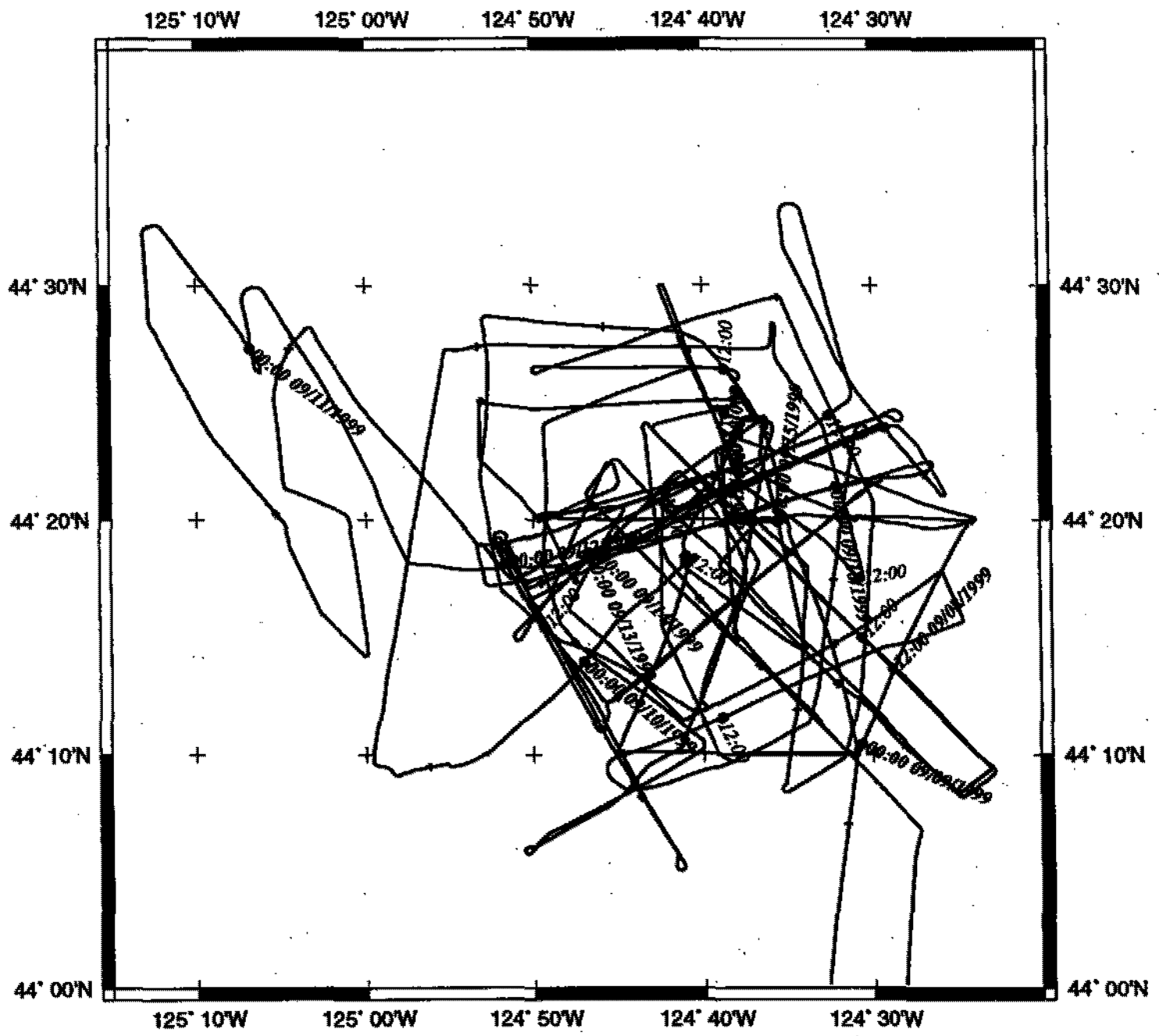
**Seismic Reflection - none collected**

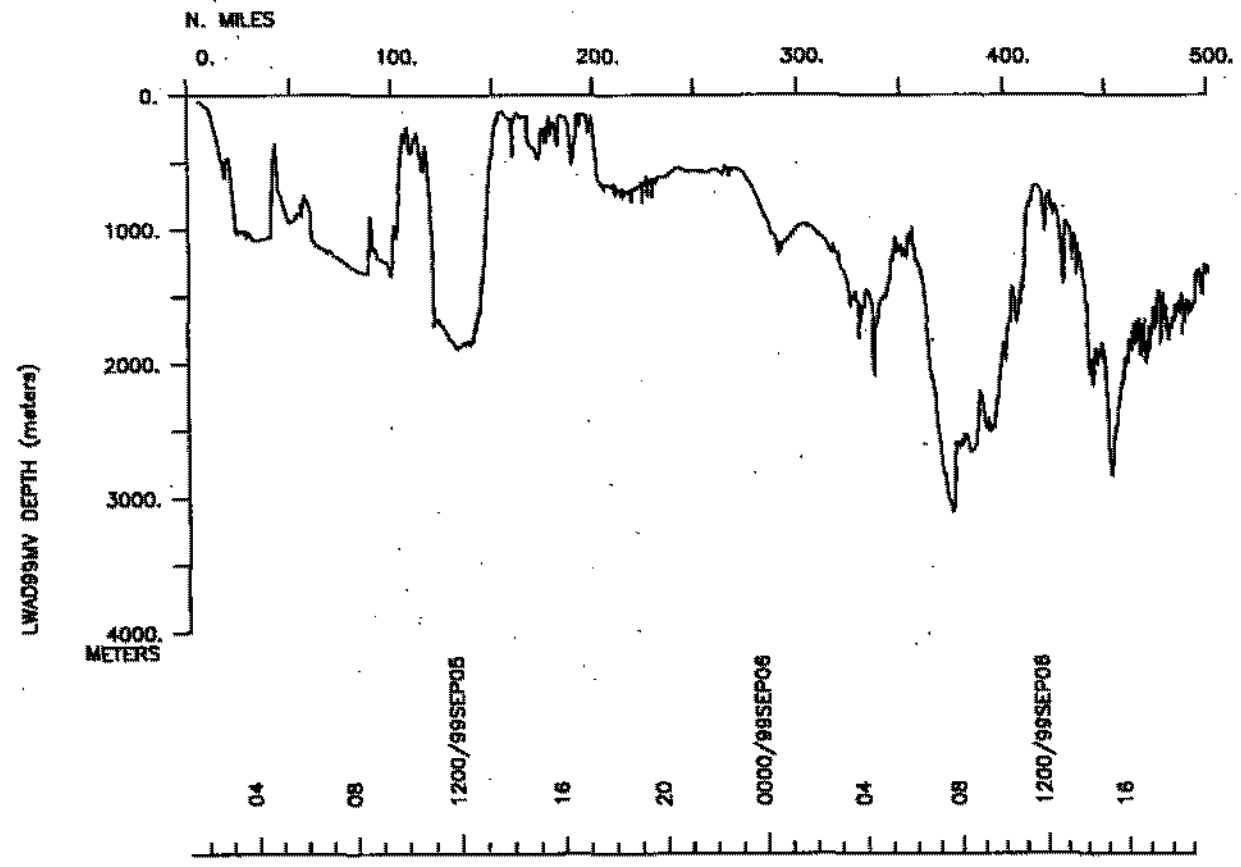
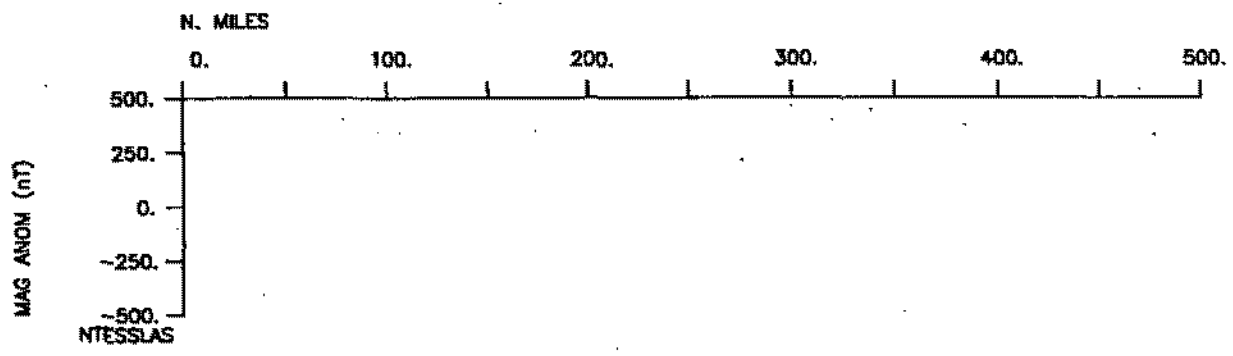
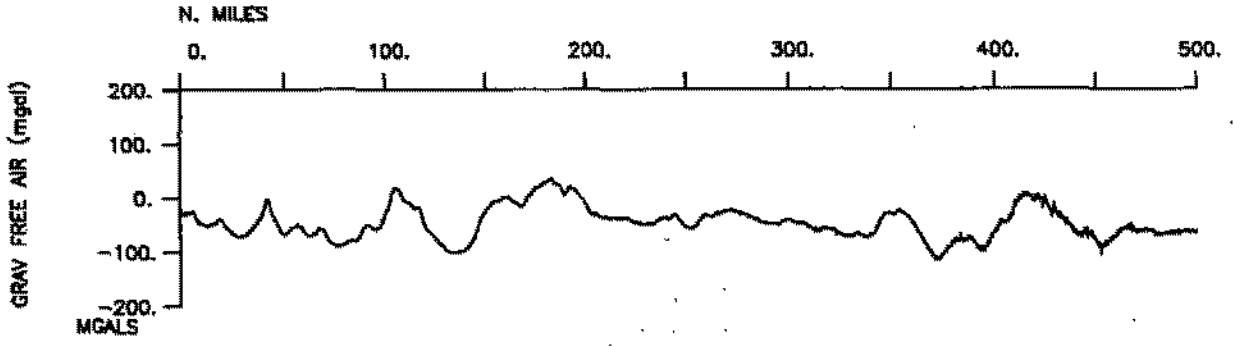
**Sea Beam - 2557 miles**

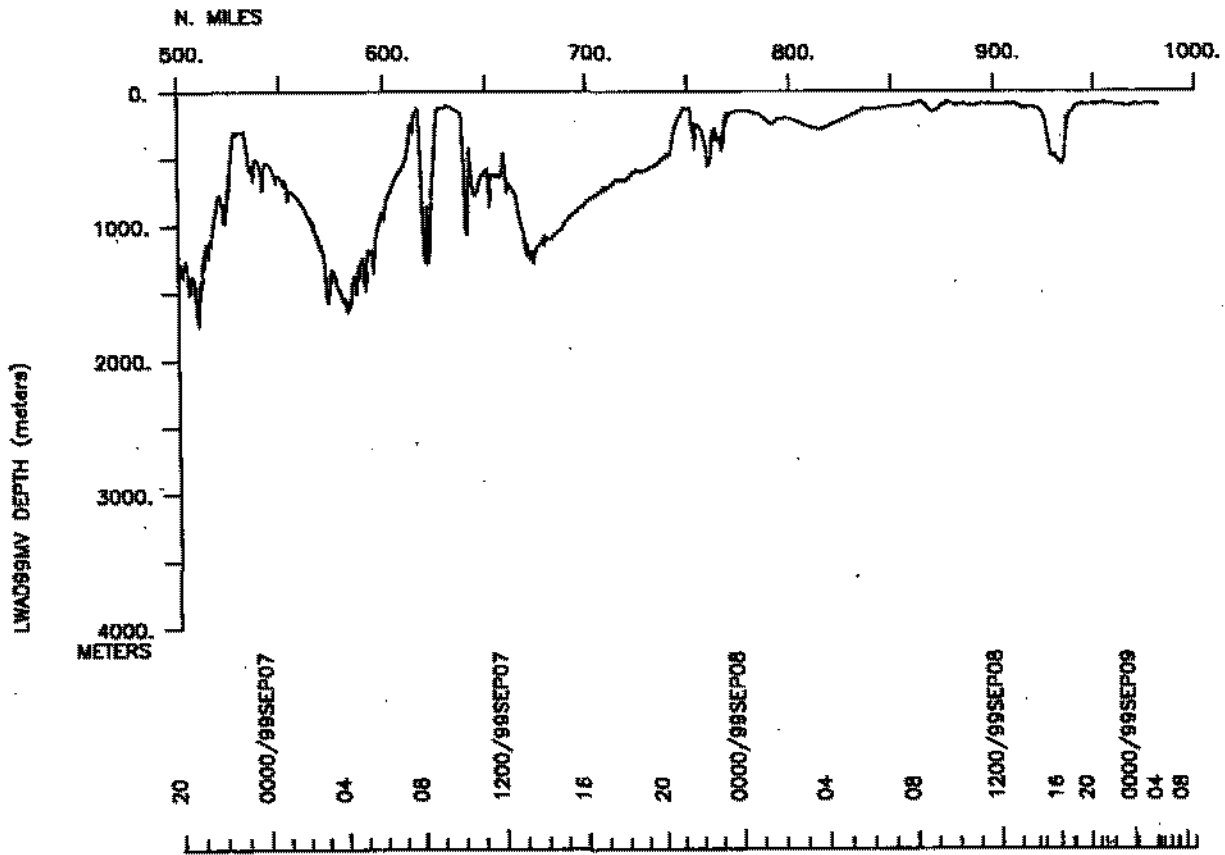
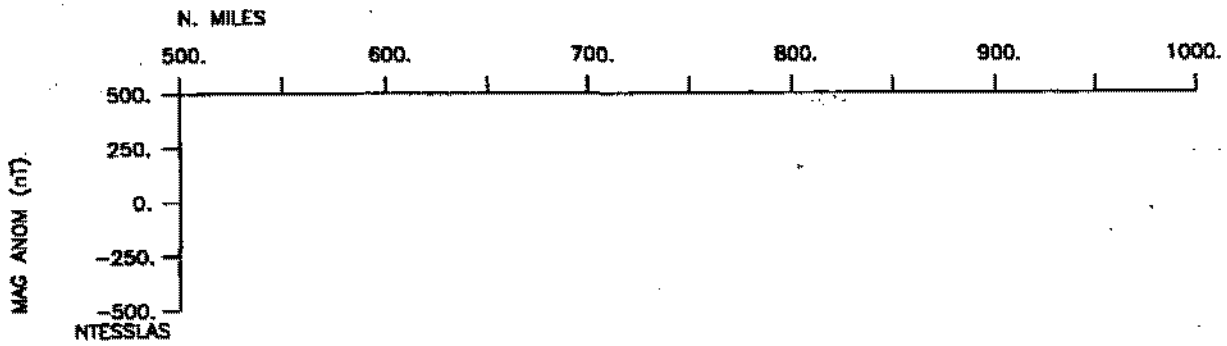
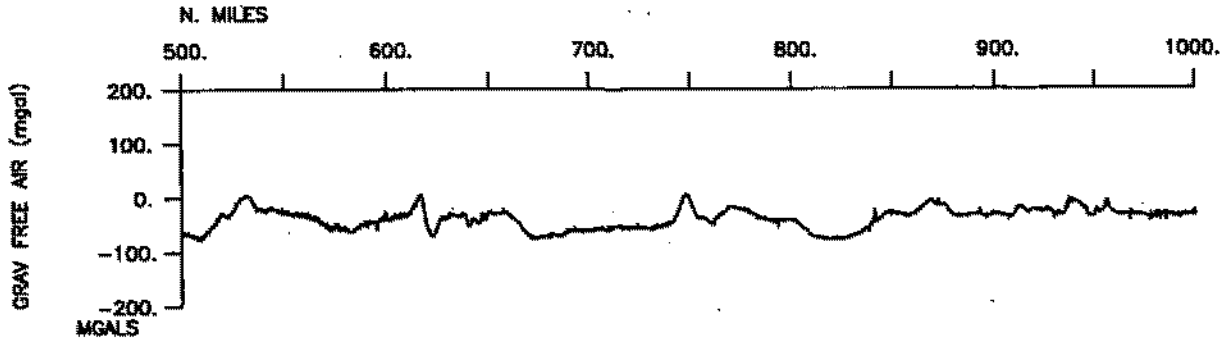
**Gravity - 2753 miles**

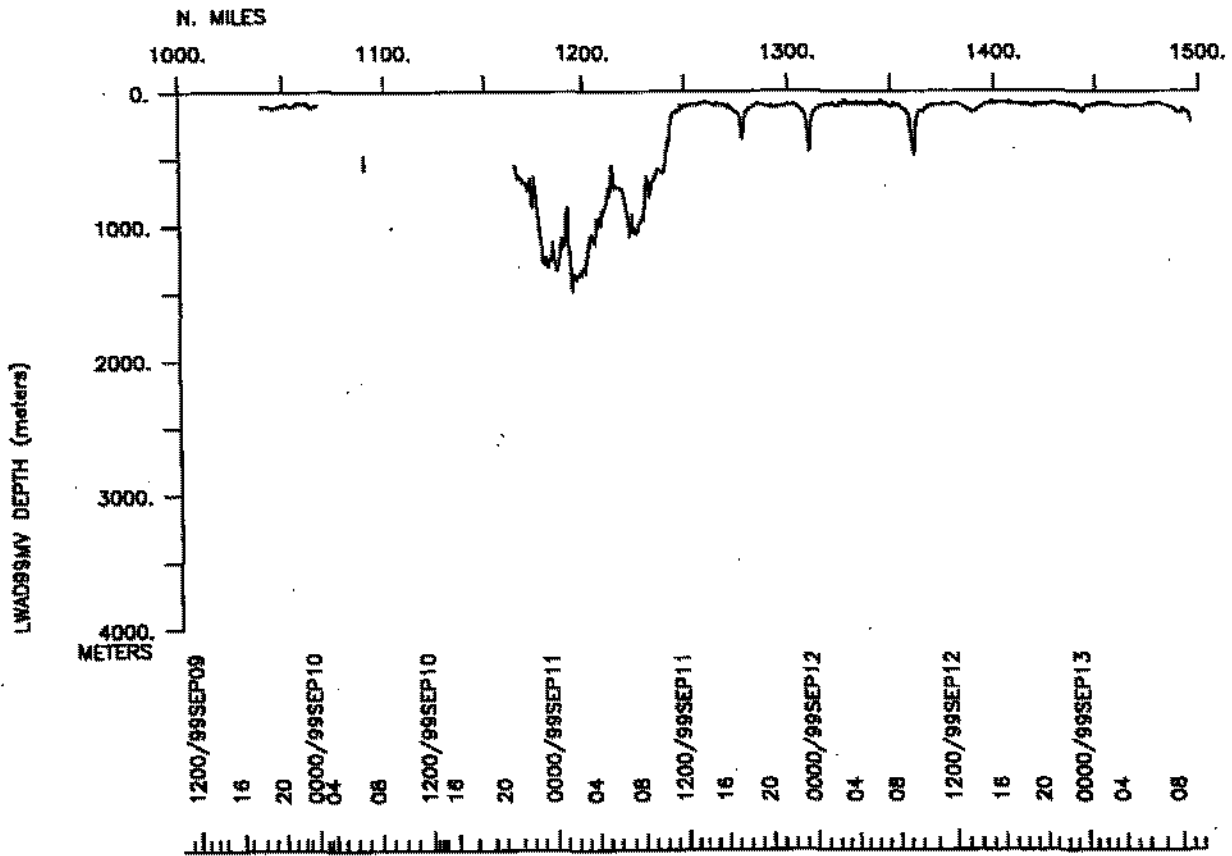
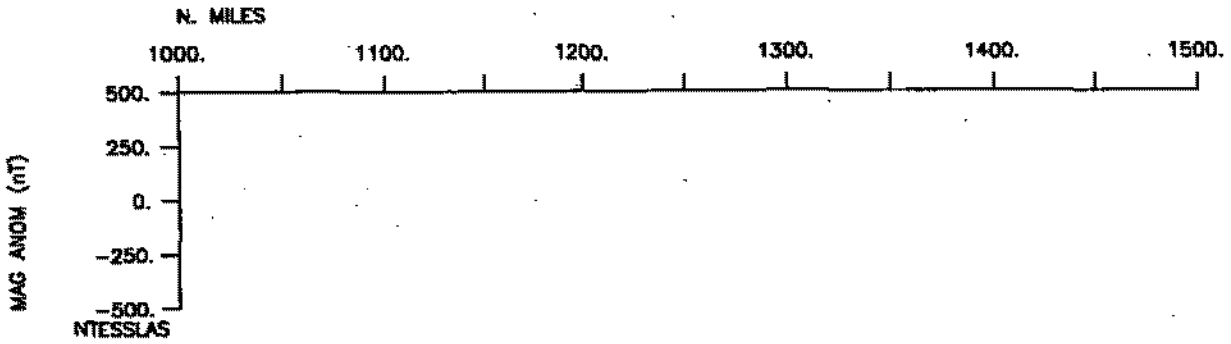


# LWAD99 Survey

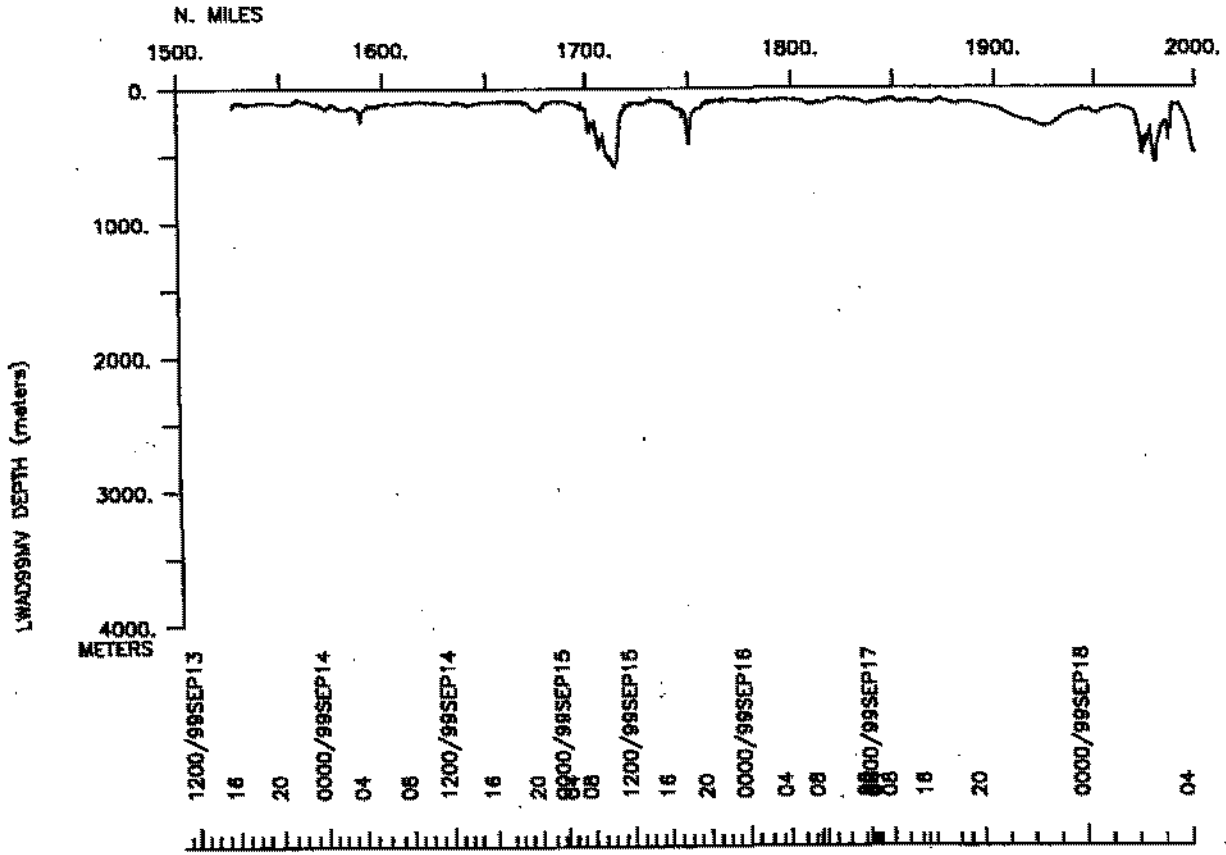
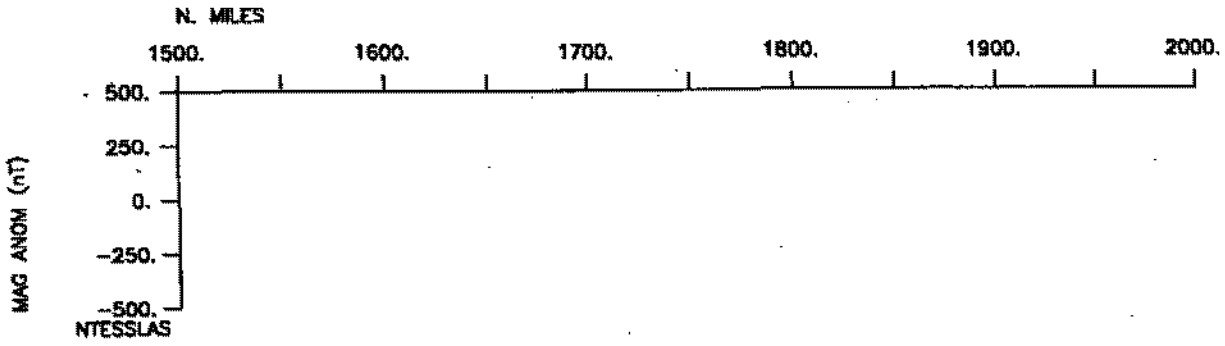
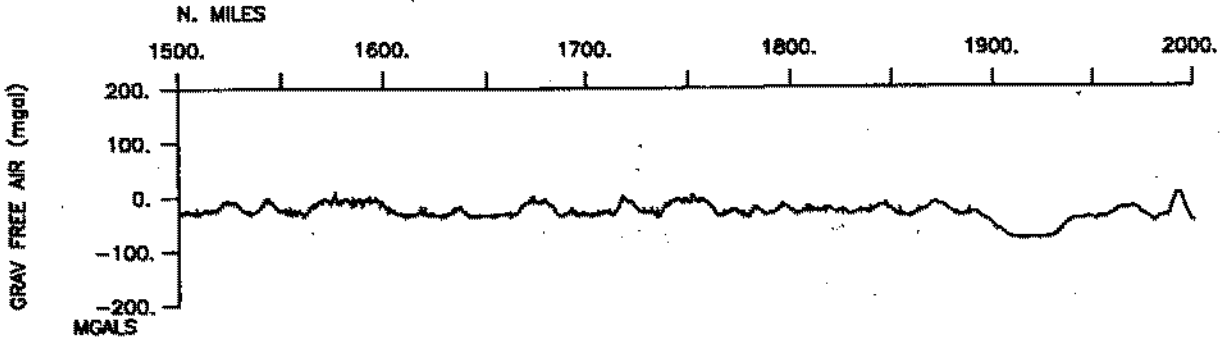


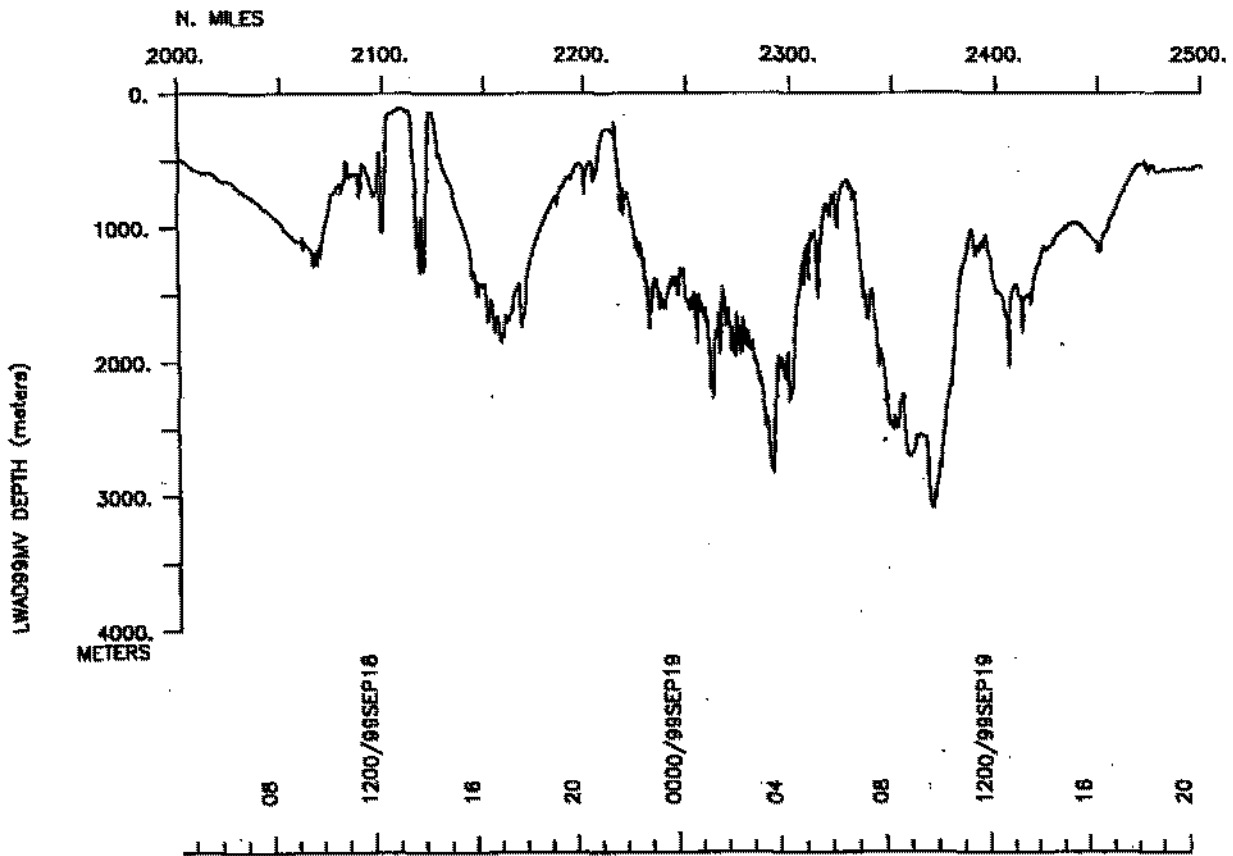
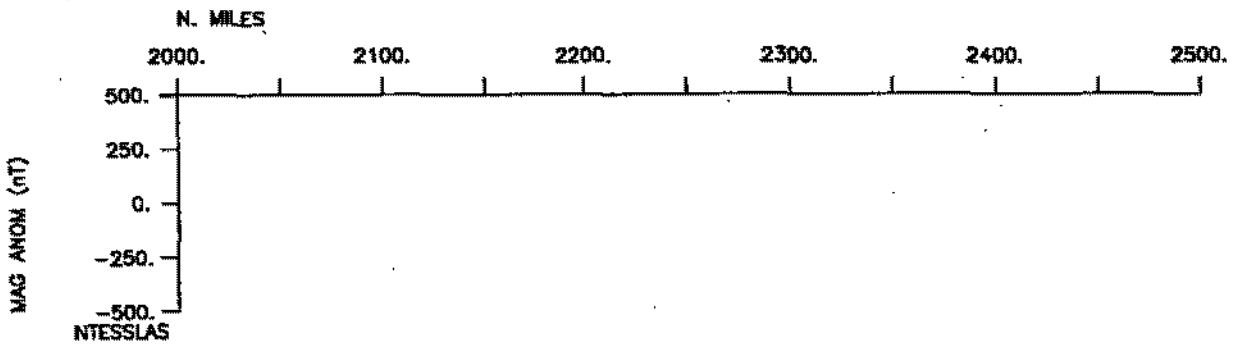
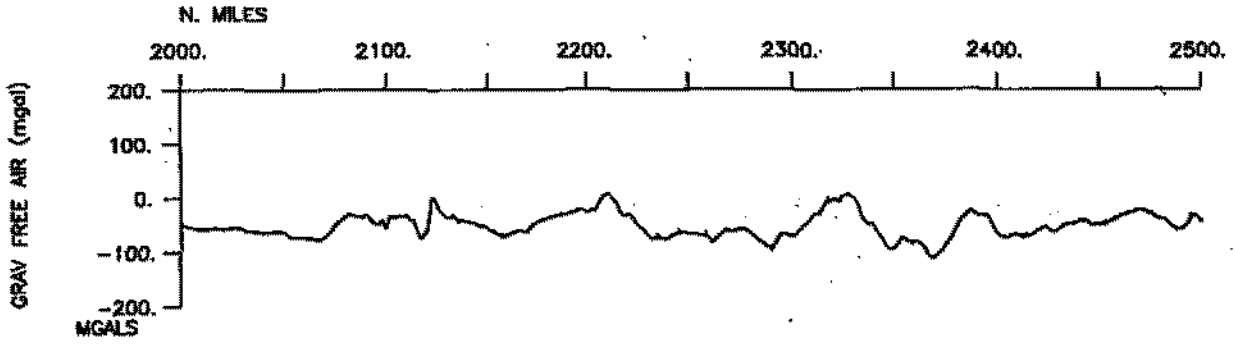


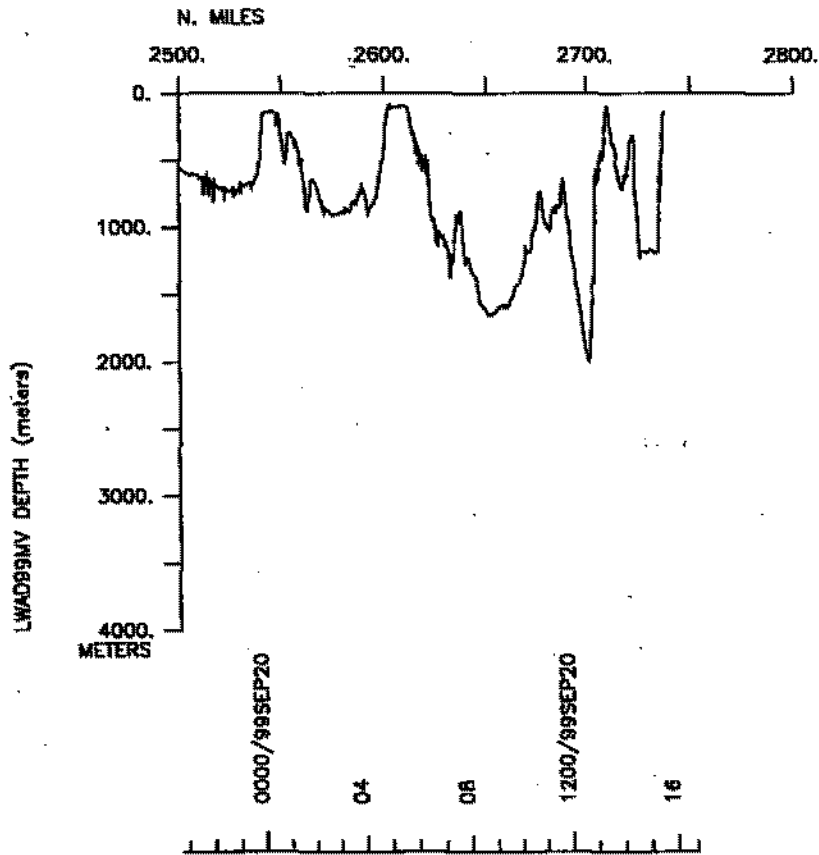
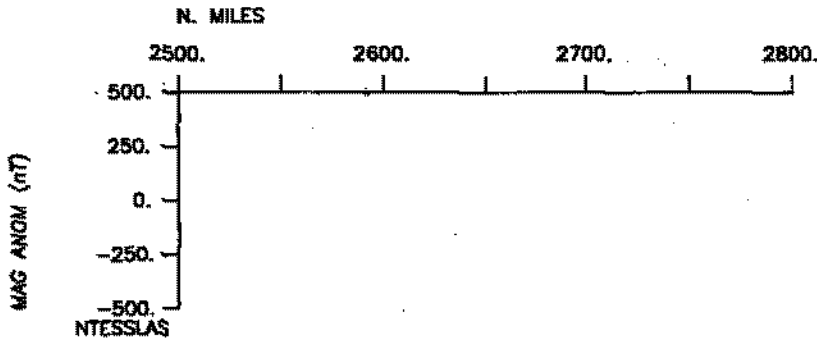
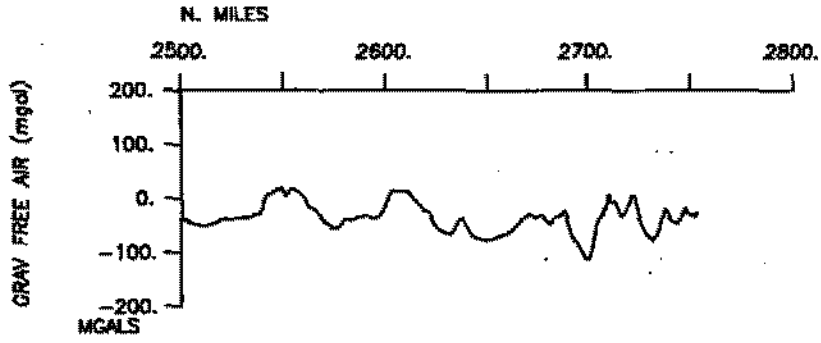












## **S.I.O. SAMPLE INDEX**

### **Littoral Water Advanced Development**

**(LWAD99MV)**

**R/V Melville**

**(Issued February 2000)**

#### **Ports:**

**San Diego, California (05 September 1999)**

**to**

**San Diego, California (20 September 1999)**

#### **Co-Chief Scientists:**

**James McEachern, Naval Air Warfare Center**

**Fred T. Erskine, Naval Research Lab.**

*The Sample Index is a first level interdisciplinary listing of time, position, sample identification and disposition of all samples, records and measurements collected on this cruise leg. The index data are encoded at sea by the resident marine technician and processed on shore by the S.I.O. Geological Data Center shortly after the completion of the cruise leg.*

*Positions are interpolated on the basis of sample time by comparison to a single, edited navigation file. Samples beginning at one time and position and ending at another are entered on two consecutive lines. Disposition and sample type are represented by three and four character codes to permit future computer searches on these parameters. (Listings defining these codes are available from the Geological Data Center.)*

**GDC Cruise I.D.# 289**

\*\*\*\* Ports \*\*\*

0200 050999 LGPT B San Diego, Calif. 32-40.00N 117-14.00W f LWAD99MV  
 1500 200999 LGPT E San Diego, Calif. 32-40.00N 117-14.00W f LWAD99MV

\*\*\*\* Personnel \*\*\*

#	*****NAME*****	*****TITLE*****	*****AFFILIATION*****	**CRID**
PECS SIX	McEachern, Jim	Co-Chief Scientist	Naval Air Warfare	LWAD99MV
PECS SIX	Erskine, Fred	Co-Chief Scientist	Naval Research Lab.	LWAD99MV
PESP SIX	Savage, Jack	Technician	Naval Air Warfare	LWAD99MV
PESP SIX	Spikes, Clay	Technician	Marin Acoustic Inc.	LWAD99MV
PESP SIX	MacGeigan, Butch	Technician	Marconi	LWAD99MV
PESP SIX	Lamar, Perry	Technician	NAVMAR	LWAD99MV
PESP SIX	Gomes, Bruce	technician	Naval Research Lab	LWAD99MV
PESP SIX	Dubberly, John	Technician	Naval Research Lab	LWAD99MV
PESP SIX	Pasewark, Bruce	Technician	Naval Research Lab	LWAD99MV
PESP SIX	Wolf, Steve	Technician	Naval Research Lab	LWAD99MV
PESP UWA	Berry, Jon	Technician	Applied Physics Lab	LWAD99MV
PESP UWA	Felgman, Tim	Technician	Applied Physics Lab	LWAD99MV
PESP SIX	Ellis, Jay	Technician	Boeing	LWAD99MV
PESP SIX	Williams, Faron	Technician	Defense Eval.Systems	LWAD99MV
PESP SIX	Grden, Mark	Technician	Nvl.UnderwaterWarfar	LWAD99MV
PESP SIX	Harrison. Steve	Technician	Nvl.UnderwaterWarfar	LWAD99MV
PESP SIX	Williamson, Ken	Technician	Nvl.UnderwaterWarfar	LWAD99MV
PESP SIX	Schlayer, Bob	Technician	Defense Eval.Systems	LWAD99MV
PESP SIX	Klingbeil, Delia	Scientist	Nvl.UnderwaterWarfar	LWAD99MV
PESP UTAN	Eisman, Paul	Engineer	U. of Texas Austin	LWAD99MV
PESP UTAN	Focke, Karl	Engineer	U. of Texas Austin	LWAD99MV
PESP UTAN	Thompson, Lewis	Engineer	U. of Texas Austin	LWAD99MV
PERT STS	Comer, Ron	Resident Tech	Scripps Institution	LWAD99MV
PECT STS	Charters, Jim	Computer Tech	Scripps Institution	LWAD99MV

\*\*\*\* NOTES \*\*\*

#An 'X' in the (B)egin/(E)nd column following the sample code indicates no  
 #sample or data recovered. A 'C' indicates continuation of data collection  
 #from before the beginning or after the end of a particular leg. (Moored  
 #bottom instruments, for example.) The number appearing in the columns  
 #between the sample identifier and the disposition code, for many sample  
 #entries, is the water depth in corrected meters.

#GMT DDDMMYY	SAMP B SAMPLE	DISP			p CRUISE
#TIME DATE	TZ CODE E IDENTIFIER	CODE	LATITUDE	LONGITUDE	c LEG-SHIP

\*\*\*\* Underway Data Curator - S. M. Smith ext. 42752 \*\*\*

\*\*\*\* Sea Beam Records (vertical beam and side scan) \*\*\*

0148 050999 0 MBSM B v.beam&sidescan r-01 GDC 32-37.57N 117-16.31W g LWAD99MV  
 0121 200999 0 MBSM E v.beam&sidescan r-01 GDC 33-54.66N 120-25.28W g LWAD99MV  
 0126 200999 0 MBSM B v.beam&sidescan r-02 GDC 33-53.91N 120-24.47W g LWAD99MV  
 1541 200999 0 MBSM E v.beam&sidescan r-02 GDC 32-37.79N 117-24.34W g LWAD99MV

\*\*\*\* Echo Sounder Records \*\*\*

0305 200999 0 DPR3 B 3.5khz r-01 GDC 33-39.22N 120-08.00W g LWAD99MV  
 1221 200999 0 DPR3 E 3.5khz r-01 GDC 32-40.52N 118-14.06W g LWAD99MV

\*\*\*\* Digital Gravity \*\*\*

0000 050999 0 GVDR B Digital gravity GDC 32-42.40N 117-14.18W g LWAD99MV  
 1718 200999 0 GVDR E Digital gravity GDC 32-42.27N 117-14.07W g LWAD99MV

\*\*\*\* End Sample Index LWAD99MV