





Stations  
on line.

Ramona Canal  
Book 20.

O.K. to Sta 119  
Tunnel Portal.

Old sta. beyond  
Tunnel.

Copied on Tracing  
June 30 1912  
D. G. M.

COPY

Contents

- Line from 8144150 North
- Line " " " South
- St. " from 77480 down Sand Creek
- T 145- R 3 E Sec 19

ESTIMATE BY C. S. ALVERSON, C. E.

On the 11th instant I received from your Los Angeles Office a schedule calling for estimates of cost for different types of Dams on the San Luis Rey and Santa Ysabel Rivers in San Diego County, California, also conduits leading from the same. Other business matters has prevented me from sending you a complete statement.

The following is a partial list of the same.

Lower Pamo Dam at O of Reservoir Map.

Height body of Dam 160 ft. Parapet at 166 ft.

(Type) Earth and Rock fill, with reinforced concrete face.

Slope on water face 1/2 on 1; slope down stream face 1-1/2 on 1.

Reinforced concrete, thickness at base 3-1/2 ft top 10 ins.

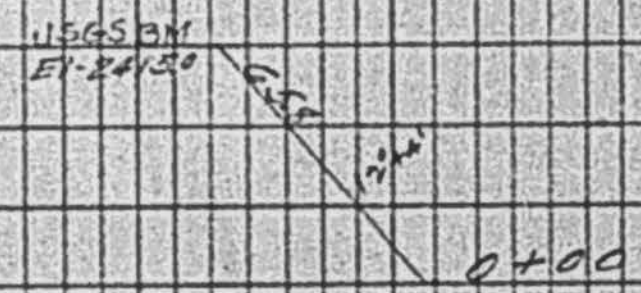
Dry hand laid rock	"	"	"	12	"	"	4 ft.
Loose rock fill	"	"	"	80	"	"	16 ft.
Earth and spawls	"	"	"	240	"	"	0 ft.

Estimates of quantities and cost in place.

3880 cu-yds. concrete proper on water face at \$8.75	\$36,190.00
67100 lbs reinforcing tees at 3¢ F. O. B., San Diego	2,013.00
2175 " Bolts and Plates " 4¢ " " " "	87.00
Freight and labor	340.00
240,000# Reinforcing steel bars at 3 1/2¢ F. O. B.	6,000.00
Freight and labor	550.00
150 cu-yds reinforced concrete parapet wall at \$9.75	1,462.50
"I" Beams, bolts, plates, etc.,	347.50
5000 cu-yds excavation cut off walls, at 40¢	2,000.00
7000 cu-yds excavation for rock fill at 35¢	2,450.00
	<hr/>
	41,480.00

C Line

194.0	N49°55'W
20+25	27°23'14"
147.0	N22°28'E
194.75	17°57'14"
478.0	N43°1'E
11+00	44°56'14"
500.0	N49°27'E
11+00	37°08'14"
773.3	N12°19'E
3+26.2	59°5'14"
226.2	N17°34'E
0+00	



BROUGHT FORWARD.

1600 cu-yds concrete masonry cut-off walls @ \$8	\$41,440.00
13670 cu-yds Dry hand laid masonry @ \$2.55	12,800.00
80000 cu-yds loose rock fill " 1.05	34,858.50
165000 cu-yds Earth and shawls " .27	84,000.00
175 cu-yds reinforced concrete for Outlet conduit \$10-	1,750.00
420 cu-yds excavation for outlet conduit @ .50¢	210.00
INLET TOWER AND REGULATING APPARATUS:	
1 - 36 inch Gate Valve in place lower toe	1,450.00
Masonry for cistern and pipe connections, etc.	625.00
9,600 cu-yds excavation for overflow weir at 30¢	825.00
550 cu-yds concrete for floor " @ \$7.50	2,880.00
Bridge for overflow weir	4,125.00
Clearing Reservoir	1,150.00
Fencing Reservoir	2,200.00
Wagon roads around reservoir	2,400.00
Gate Keepers House	3,500.00
Repairing wagon road San Pasqual to Dam	500.00
Engineering and Superintendent	1,200.00
General contingencies, etc.m	6,000.00
Sum total - - - - -	13,536.50
	\$269,000.00

Above type of Earth and rock fill dam faced with Redwood plank from the 50-foot contour in place of reinforced concrete gives the following results; The price of the redwood lumber is given in place. The verticle redwood timbers are 4 X 6" and 4 ft center to center. The facing plank are from 4" to 3" in thickness. Joints are broken both at the horizontal and vertical seams; by the second layer and calked with oskum and treated with asphaltum, rosin and tallow.

C Line

44+50 tied to P Line

N61°22'E

3'52" H

1588 N70°20'E

19°55' H

533 N51°05'E

12°04' H

227 N39°21'E

43°35' H

N4°54' W

57°39' H

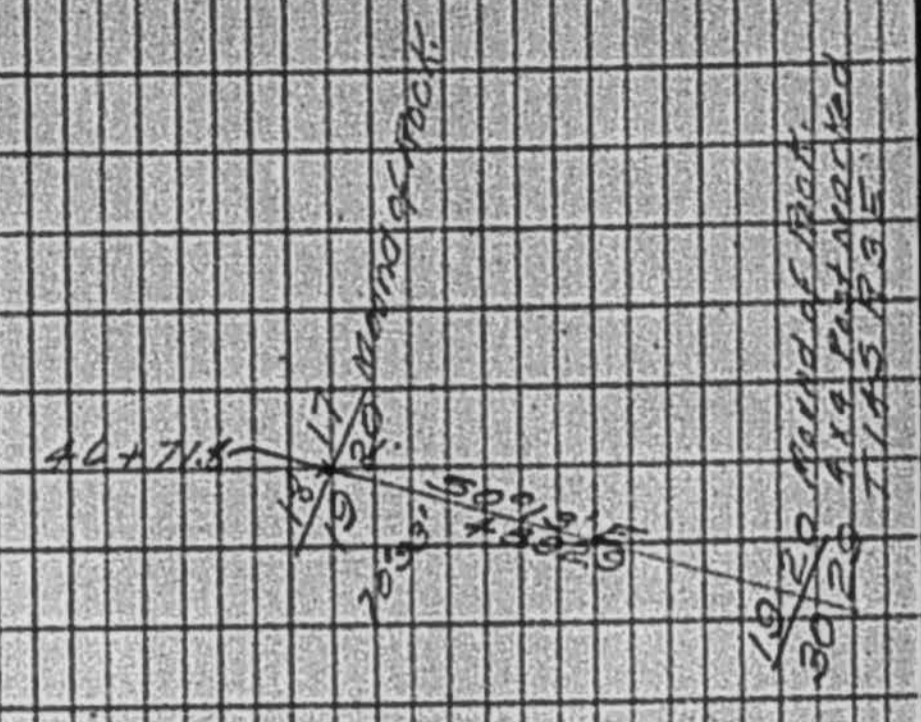
170 N62°33' W

36°46' H

454 N55°47' W

21°12' H

N43°5' W



14675 lin. ft. vertical lumber 4" x 6" 20350 B M @ \$50	\$1,467.50
Facing plank from 50 to 90 ft contour	
12320 sq ft 4" X 12" 49280 B M @ \$55	2,710.40
12320 " " 3" X 12" 36960 " " " \$65	2,032.80
Facing plank from 90 to 120 ft contour	
14355 sq ft 3" x 12" Double 86130 B M @ \$55	4,737.15
Facing plank from 120 to 130 ft contour	
11666 sq ft 3" X 12" 34980 B. M. @ \$55	1,923.90
11660 sq ft 3" X 12" 23320 B. M. @ \$55	1,282.60
Facing plank from 140 to 160 ft contour	
13820 sq ft 2" x 12" Double 50360 B. M. @ \$55	3,044.80
Parapet wall, complete	1,510.00
620 cu yds. Concrete backing @ \$7.50	4,650.00
120 bales of Oakum for calking @ \$5	600.00
Asphaltum, rosin, tallow, etc.,	125.00
Labor on calking	390.00
Contingencies	165.85
Total	<u>\$24,640.00</u>

A saving of \$5,350. as against the reinforced concrete facing and is more readily constructed.

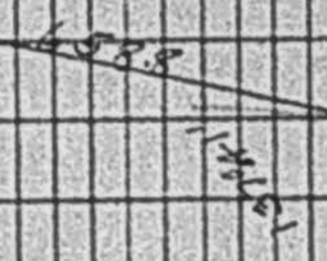
5

C'Line

157	N32°16'W
22157	
2640	N54°31'W
33357	
6800	N59°06'W
40918	
268	S51°42'W
19°23'N	
3630	S61°25'W
37071	
2400	S33°58'W
17°42'N	
2800	S51°40'W
34061	
51734	

19 28  
 30 29  
 19 28  
 30 29

T145R3E



LOWER PAMO DAM AT O OF RESERVOIR MAP.

Type, Curved Concrete rubble Masonry  
 Height, body of Dam at 160 ft. Parapet at 166 ft.  
 Thickness of Base 100 ft. Top of 12 ft Parapet 2 ft.  
 Radius of curve 986 ft.

18,000 cu yds of excavation @ .45¢	-----	\$ 8,100.00
72,500 cu yds masonry @ \$6.75	-----	489,375.00
850 cu yds Inlet Tower @ 10.00	-----	850.00
Foot bridge top of tower and valves	-----	2,200.00
1-36 inch gate valve in place lower tow	-----	625.00
Overflow weir complete	-----	8,155.00
Clearing Reservoir	-----	2,000.00
Fencing Reservoir	-----	2,400.00
Wagon roads around reservoir	-----	3,500.00
Gate Keeper's house	-----	500.00
Repairing wagon road San Pasqual to Dam	-----	1,200.00
Engineering, 4 Superintendents	-----	6,000.00
General Contingencies	-----	15,095.00
		<u>\$560,000.00</u>

C' Line		
	Station Elev	
524	524'00"	2228.12
525	525'00"	
526	526'00"	
527	527'00"	
528	528'00"	
529	529'00"	
530	530'00"	
531	531'00"	
532	532'00"	
533	533'00"	
534	534'00"	
535	535'00"	
536	536'00"	
537	537'00"	
538	538'00"	
539	539'00"	
540	540'00"	
541	541'00"	
542	542'00"	
543	543'00"	
544	544'00"	
545	545'00"	
546	546'00"	
547	547'00"	
548	548'00"	
549	549'00"	
550	550'00"	
551	551'00"	
552	552'00"	
553	553'00"	
554	554'00"	
555	555'00"	
556	556'00"	
557	557'00"	
558	558'00"	
559	559'00"	
560	560'00"	
561	561'00"	
562	562'00"	
563	563'00"	
564	564'00"	
565	565'00"	
566	566'00"	
567	567'00"	
568	568'00"	
569	569'00"	
570	570'00"	
571	571'00"	
572	572'00"	
573	573'00"	
574	574'00"	
575	575'00"	
576	576'00"	
577	577'00"	
578	578'00"	
579	579'00"	
580	580'00"	
581	581'00"	
582	582'00"	
583	583'00"	
584	584'00"	
585	585'00"	
586	586'00"	
587	587'00"	
588	588'00"	
589	589'00"	
590	590'00"	
591	591'00"	
592	592'00"	
593	593'00"	
594	594'00"	
595	595'00"	
596	596'00"	
597	597'00"	
598	598'00"	
599	599'00"	
600	600'00"	

col. in office. 186-28:  
 (N 74-10 W 7425 186.2)  
 186-28:  
 186.2

Station 10  
 7145.835

RETURN TO  
 SILVER GATE MANUFACTURING CO.,  
 SAN DIEGO, CALIFORNIA,  
 If not called for in 7 days.

Return to  
 B. S. Aluerson

Copy

Transit Line 175' C  
 Pamo Reservoir

B. S. Aluerson

C'Line

Dist	Δ	CC	Elev
3118		S18°25'E	
3435		S22°31'W	222410
447		S32°25'E	222798
153		S32°48'W	
2245		S11°33'N	223117
204		S11°33'N	
2415		S7°40'W	222986
547		S19°13'W	
7148		S27°18'	222986
6550		S18°26'W	
22493		S25°21'	222503
5900		S19°24'W	
65403		S25°58'E	222653
3920		S7°19'W	
624200		S16°49'E	222903
1420		S24°08'W	

N.	E.	N.	E.
5974.0	10060.7	4860.0	7196.4
73.5	100.70	77.9	3.7
6047.5	10160.7	4782.1	7192.7
167.1	149.2	129.3	80.0
6214.6	10309.9	4652.8	7272.7
239.4	192.2	170.4	122.7
6454.0	10502.1	4482.4	7150.0
57.2	133.2	477.6	9.5
6511.2	10635.3	4004.8	7245.0
57.2	180.5	143.7	196.0
6454.0	10815.8	3861.1	7049.5
105.5	27.3	97.0	31.5
6348.5	10788.5	3764.1	7017.8
130.6	123.9	72.6	7.8
6217.9	10664.6	3691.5	7036.3
76.6	39.0	92.8	148.4
6141.3	10625.6	3598.7	7184.7
426.5	358.0	247.4	207.6
5714.8	10267.6	3351.3	6977.1
257.2	301.1	274.0	24.0
5457.6	9966.5	3077.3	6953.1
222.2	356.2	165.2	161.7
5235.4	9610.3	2912.1	6969.8
26.8	305.8	29.3	132.8
5262.2	9304.5	2882.8	7102.6
54.4	165.2	144.3	14.0
5316.6	9139.3	2738.5	7088.6
64.8	160.4	2838.5	
5381.4	8978.9		
22.2	130.0		
5403.6	8848.9		
23.8	97.1		
5427.4	8751.8		
2.1	160.0		
5425.3	8591.8		
124.0	488.5		
5549.3	8103.3		
57.3	79.5		
5492.0	8023.8		
152.0	56.0		
5340.0	8079.8		
160.7	115.7		
5179.3	7964.1		
78.9	183.8		
5100.4	7780.3		
80.2	422.5		
5020.2	7357.8		
65.7	105.2		
4954.5	7252.6		
94.5	56.2		
4860.0	7196.4		

Pages 9 + 10

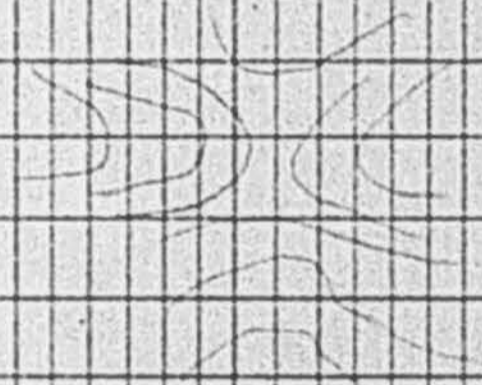
OK as to N + S



Cline

104+890 2222.6  
 562.1 57519'E  
 99+209 3007' Lt 2363.56  
 803.4 57212'E  
 91+17.5 6007' Lt 2262.28  
 51215'E

Saddle



N.	E.		N.	E.
197.7 ✓	153.1 ✓		2288.8	9342.7 ✓
55.6 ✓	139.3 ✓		114.7 ✓	163.8 ✓
253.3	292.4		2403.5	9506.5
82.7 ✓	56.5 ✓		92.1 ✓	169.6 ✓
506.0 ✓	348.7 ✓		2311.4	3676.1
190.5 ✓	61.1 ✓	23.5	21.1 ✓	201.9 ✓
526.5 ✓	409.7 ✓	9.7	2290.3	3878.0
47.9 ✓	85.5 ✓	35.7	18.6 ✓	74.7 ✓
574.4 ✓	425.2		2308.9	3952.7
57.2 ✓	137.8 ✓		56.6 ✓	56.6 ✓
51.5 ✓	63.3 ✓		2365.5 ✓	4009.3 ✓
33.6 ✓	122.7 ✓		80	31.5 ✓
48.1 ✓	762.7	71.9	2445.5	4324.3
17.9 ✓	75.9 ✓		7.9 ✓	139.8 ✓
499.5	838.6	5362.5	2437.6	4464.1
106.9 ✓	406.2 ✓	2497.4	135.5 ✓	110.7 ✓
606.4	1744.8	2575.1	2302.1	4574.8
79.6 ✓	112.7 ✓	2797.4	75.7 ✓	172.1 ✓
686.0	1357.5	5372.5	2226.4	4746.9
110.9 ✓	54.9 ✓		486.7 ✓	319.1 ✓
79.5 ✓	1412.4		1739.7	5066.0
121.9 ✓	4.8		21.8 ✓	92.5 ✓
91.6 ✓	1417.2		1717.9	5158.5
198.6 ✓	23.5 ✓		87.3 ✓	37.5 ✓
1115.5	1393.7		1805.2	5196.0
131.8 ✓	161.1 ✓		149.9 ✓	4.6 ✓
1747.3	1554.8		1955.1	5200.6
69.2 ✓	162.6 ✓		123.4 ✓	148.4 ✓
131.7 ✓	1717.4		2078.5	5349.0
139.9 ✓	61.6 ✓		201.7 ✓	4.7 ✓
1457.0	1779.0		2280.2	5339.3
177.5 ✓	1.3 ✓		41.8 ✓	38.7 ✓
1634.5	1792.2	2575.1	8322.0	5300.6
259.1 ✓	215.5 ✓	2797.4		
1893.6	2007.7	5372.5		
382.5 ✓	255.6 ✓	71.9		
2276.1	2263.3	5300.6		
72.1 ✓	102.1 ✓			
2204.0	2365.4			
28.1 ✓	82.3 ✓			
2232	2447.7			
159.5 ✓	150.3 ✓			
2391.5	2578.0			
244.8 ✓	50.9 ✓			
2146.7	2628.9			
69.9 ✓	145.0 ✓			
2076.8	2773.9			
5.3 ✓	70.8 ✓			
2071.5	2844.7			
87.9 ✓	255.3 ✓			
2059.4	3100.0			
96.4 ✓	112.9 ✓			
2255.8	3214.0			
33.0 ✓	127.8 ✓			
2288.8	3342.17			

O Kasten N. S. E. W.

Page 1+2

CALINE

1786.06	52°51'N
1841.86	12°27'W
1845.11	15°22'W
1845.11	17°29'W
1901.20	20°21'W
1943.37	52°25'N
1943.37	10°07'W
1999.9	57°12'N
2013.31	11°12'W
2051.76	40°25'W
2051.76	17°06'W
2223.56	95°28'W
2223.56	51°26'N
2295.6	

2322.0	5300.6	N.	E.
2456.4	5288.2	7015.6	5895.2
2564.2	5229.0	159.6	71.7
2710.6	5302.8	2322.0	5823.5
2831.3	5335.7	6448.8	125.4
2991.2	5307.0	104	5948.9
3204.2	5307.9	6544.8	19.9
3313.1	5475.6	2322.0	5929.0
3475.6	5504.4	1861.0	210.6
3583.3	5511.9	5035	6139.6
3700.7	5505.9	2322.0	158.6
3879.0	5545.7	6544.8	6298.2
4010.0	5826.7	8866.8	250.8
4264.0	5848.9	5300.0	6529.0
4362.0	5780.9	563.5	54
4476.1	5643.6	5803.5	6583.0
4490.3	5542.6		83.5
4692.5	5340.4		6499.7
4812.4	5345.6		92.3
4854.5	5483.3		6407.4
4933.5	5592.8		90.
5123.3	5739.7		6317.4
5210.9	5719.1		85.8
5304.8	5602.1		6231.6
5492.3	5816.1		211.2
5604.6	5663.7		6020.4
5757.6	5608.9		134.7
5901.4	5672.0		5885.7
6254.4	5625.5		22.9
6219.3	5756.9		5862.8
6288.5	5842.4		59.7
6720.0	5970.2		5803.1
7015.6	5895.2		

OK  
Page 3 & 4



	N.	E.
261	1179.1 - 217.0 ✓	3832.7 - 4.0 ✓
	962.1	3828.7
262	62.0 ✓	- 257.7 ✓
	1024.1	3571.0
263	+ 94.7 ✓	- 167.1 ✓
	1118.8	3403.9 #
264	+ 39.7 ✓	- 126.0 ✓
	1158.5	3277.9 #
265	+ 55.0 ✓	- 276.6 ✓
	1213.5	3001.3
266	40.7 ✓	- 118.1 ✓
	1172.8	2883.2
267	202.7 ✓	- 221.2 ✓
	970.1	2662.0 #
268	648.5 ✓	- 179.9 ✓
	321.6	2482.1
269	100.0 ✓	- 342.7 ✓
	221.6	2139.4
	S.	+ 38.7 ✓
270	339.8 ✓	
	221.6	
	118.2	2178.1 #
271	+ 113.1 ✓	+ 46.1 ✓
	231.3	2218.2
272	+ 94.2 ✓	- 66.0 ✓
	325.5	2152.2 #
273	112.4 ✓	- 278.2 ✓
	213.5	1874.0
274	5.2 ✓	- 119.9 ✓
	207.9	1754.1
275	+ 56.0 ✓	- 149.0 ✓
	293.9	1605.1
276	+ 259.7 ✓	- 208.4 ✓
	553.6	1396.7
277	+ 56.2 ✓	+ 9.4 ✓
	609.8	1406.1
278	137.1 ✓	- 492.4 ✓
	442.7	913.7
279	+ 14.5 ✓	- 113.2 ✓
	457.2	782.5
280	+ 79.5 ✓	- 268.5 ✓
	536.7	514.0
281	+ 41.0 ✓	- 112.8 ✓
	577.7	401.2
282	+ 37.3 ✓	- 49.5 ✓
	615.0	351.7
283	+ 39.3 ✓	- 33.3 ✓
	654.3	318.4
284	- 557.2 ✓	- 343.7 ✓
	97.1	253.7
285	- 90.0	- 5.2
	7.1	20.1

	N.	E.	N.	E.
End of 217	3351.3	7013.7	240	973.2 - 598.3 ✓
218	- 174.0 ✓	- 22.0 ✓		374.9
	3177.3	6991.7	241	- 170.1 ✓
219	- 165.8 ✓	+ 7.2 ✓		204.8
	3011.5	6998.9	242	- 149.5 ✓
220	- 29.3 ✓	+ 132.8 ✓		55.3
	2982.2	7131.7		S.
221	- 144.3 ✓	- 14.0 ✓	243	134.0 ✓
	2837.9	7117.7		55.3
222	- 195.6 ✓	- 12.8 ✓		78.7
	2642.3	7104.9	244	+ 77.4 ✓
223	238.0 ✓	- 182.6 ✓		156.1
	2404.3	6922.3	245	+ 322.3 ✓
224	- 333.8 ✓	- 105.2 ✓		478.4
	2070.5	6817.1	246	+ 355.1 ✓
225	- 71.5 ✓	+ 22.5 ✓		83.3.5
	1999.0	6839.6	247	+ 244.3 ✓
226	+ 46.0 ✓	+ 375.2 ✓		1077.8
	1953.0	7214.8	248	- 234.4 ✓
227	+ 139.2 ✓	+ 279.2 ✓		843.4
	2092.2	7494.0	249	- 401.3
228	- 2.5 ✓	+ 278.0 ✓		442.1
	2089.7	7772.0	250	- 278.6 ✓
229	+ 232.8 ✓	+ 424.3 ✓		163.5
	1856.9	8196.3	251	- 103.0 ✓
230	+ 26.5 ✓	+ 100.6 ✓		60.5
	1883.4	8296.9		
231	+ 39.1 ✓	+ 287.4 ✓		N.
	1922.5	8584.3	252	289.3 ✓
232	- 163.8 ✓	- 136.2 ✓		60.5
	1758.7	8448.1	253	228.8
233	+ 104.0 ✓	+ 55.8 ✓		321.8 ✓
	1654.7	8503.9	254	+ 210.4 ✓
234	+ 38.8 ✓	- 178.8 ✓		761.0
	1615.9	8325.1	255	+ 105.8 ✓
235	+ 48.4 ✓	- 334.5 ✓		866.8
	1567.5	7990.6	256	+ 314.3 ✓
236	- 31.8 ✓	- 77.7 ✓		1181.1
	1535.7	7912.9	257	+ 68.5 ✓
237	+ 126.2 ✓	- 161.0 ✓		1249.6
	1409.5	7751.9	258	+ 15.6 ✓
238	- 275.0 ✓	- 365.0 ✓		1265.2
	1134.5	7386.9	259	- 26.7 ✓
239	- 161.3 ✓	- 437.2 ✓		1238.5
	973.2	6949.7	260	- 59.4 ✓
				1179.1
				3832.7

537.1  
529.6  
7.5  
647.2  
117.6  
529.6

5424.9  
2443.7  
2981.8  
2607.3  
374.5  
374.5  
804.2  
1178.7  
462.9  
1715.8  
1778.7  
537.1  
8628.4  
1496.7  
7131.7  
870.3  
6264.4  
2428.7  
3832.7  
3312.4  
520.3  
534.1  
520.3  
17.8

San Diego Pacific and Eastern  
RAILROAD

GEO. W. VROMAN,  
President.

SAN DIEGO, CAL., May, 1895.

DEAR SIR:

Enclosed find prospectus and blank Stock Subscriptions of the SAN DIEGO PACIFIC AND EASTERN RAILROAD, which please study carefully. Have sent same to the other officials of your Lodge. Please jointly investigate this proposition and bring it to the notice of the several members of the Brotherhoods individually and collectively. If the railroad employees will co-operate under this plan they will solve the greatest problem of the age. You will notice this plan excludes everyone except Brotherhood men.

Will be pleased to have you and your friends send in your subscriptions.

Please write us what the prospect is for receiving encouragement in your section.

Yours truly,

San Diego Pacific and Eastern Railroad.

539.3  
534.1  
2251.9  
536.1  
1715.8  
3200.6  
88.2  
3312.4  
118.1  
111.8  
6.9  
2567.1  
124  
2443.1  
2034.9  
538.2  
514.0  
2812.1  
204.8  
2607.3  
2343.0  
1538.8  
804.2  
2693.3  
1823.0  
870.3  
2630.2  
2428.7

E. E  
7013.7  
24.0 218  
6989.7  
+ 16.7 219  
7006.4  
+ 132.8 220  
7139.2  
- 141.0 221  
7125.2  
12.8 222  
7112.4 = 222  
- 182.6 223  
6929.8  
- 105.2 224  
6824.6  
+ 22.5 225  
6847.1  
+ 375.2 226  
7222.3  
+ 279.2 227  
7501.5  
+ 278.0 228  
7779.5  
+ 424.3 229  
8203.8  
+ 100.6 230  
8304.4  
+ 287.4 231  
8591.8  
- 136.2 232  
8455.6  
+ 55.8 233  
8511.4  
- 178.8 234  
8332.6

E.  
10346.5  
+ 192.2 186  
10538.7  
+ 133.2 187  
10671.9  
+ 180.5 188  
10852.4  
- 27.3 189  
10825.1  
- 123.9 190  
10701.2  
- 39.0 191  
10662.2  
- 358. 192  
10304.2  
- 301.1 193  
10003.1  
- 356.2 194  
9646.9  
- 305.8 195  
9341.1  
- 165.2 196  
9175.9  
- 160.4 197  
9015.5  
- 130.0 198  
8885.5  
- 97.1 199  
8788.4  
- 160.0 200  
8628.4  
- 488.5 201  
8139.9  
- 79.5 202  
8060.4

8266.6	
- 9.8	169
<u>8256.8</u>	
+ 9.4	170
<u>8266.2</u>	
- 90.1	171
<u>8176.1</u>	
+ 0.9	172
<u>8177.0</u>	
+ 56.3	173
<u>8233.3</u>	
- 71.2	174
<u>8162.1</u>	
+ 6.5	175
<u>8168.6</u>	
+ 251.8	176
<u>8420.4</u>	
+ 576.1	177
<u>8996.5</u>	
+ 165.8	178
<u>9162.3</u>	
+ 254.3	179
<u>9416.6</u>	
+ 125.2	180
<u>9541.8</u>	
+ 98.0	181
<u>9639.8</u>	
+ 279.2	182
<u>9919.0</u>	
+ 178.3	183
<u>10097.3</u>	
+ 100.0	184
<u>10197.3</u>	
+ 149.2	
<u>10346.5</u>	

# San Diego Pacific and Eastern RAILROAD

GEO. W. VROMAN,  
*President.*

SAN DIEGO, CAL., May, 1895.

DEAR SIR:

Enclosed find prospectus and blank Stock Subscriptions of the SAN DIEGO PACIFIC AND EASTERN RAILROAD, which please study carefully. Have sent same to the other officials of your Lodge. Please jointly investigate this proposition and bring it to the notice of the several members of the Brotherhoods individually and collectively. If the railroad employees will co-operate under this plan they will solve the greatest problem of the age. You will notice this plan excludes everyone except Brotherhood men.

Will be pleased to have you and your friends send in your subscriptions.

Please write us what the prospect is for receiving encouragement in your section.

Yours truly,

San Diego Pacific and Eastern Railroad.

14 28.7  
3 13.1  
11 5.6  
313.1

434.9  
~~280.0~~  
150.6  
585.5

117.6 401.9  
117.6  
284.3

8332.6	
- 334.5	235
<u>7998.1</u>	
- 77.7	236
<u>7920.4</u>	
- 161.0	237
<u>7759.4</u>	
- 365.0	238
<u>7394.4</u>	
- 437.2	239
<u>6957.2</u>	
- 688.3	240
<u>6268.9</u>	
- 25.5	241
<u>6243.4</u>	
- 332.0	242
<u>5911.4</u>	
+ 1.5	243
<u>5912.9</u>	
- 68.0	244
<u>5844.9</u>	
- 117.3	245
<u>5727.6</u>	
- 25.0	246
<u>5702.6</u>	
- 53.0	247
<u>5649.6</u>	
- 134.0	248
<u>5515.6</u>	
- 105.7	249
<u>5409.9</u>	
- 105.6	250
<u>5304.3</u>	



N.

E.

$$7425.7$$

$$+ 18.3 = 152$$

$$7444.0$$

$$+ 141.4 = 153$$

$$758.54 = 153$$

$$- 352.2 = 154$$

$$7233.2$$

$$- 25.7 = 155$$

$$7207.5$$

$$+ 64.3 = 156$$

$$7271.8 = 155$$

$$- 24.4 = 157$$

$$7247.4 = 156$$

$$+ 54.1 = 158$$

$$7301.5 = 157$$

$$+ 209.4 = 159$$

$$7510.9 = 158$$

$$+ 79.0 = 160$$

$$7589.9 = 159$$

$$- 287.6 = 161$$

$$7302.3 = 160$$

$$+ 50.2 = 162$$

$$7352.5 = 161$$

$$+ 120.7 = 163$$

$$7473.2 = 162$$

$$+ 449.3 = 164$$

$$7922.5 = 163$$

$$+ 138.4 = 165$$

$$8060.9$$

$$599.7 = 166$$

$$8660.6$$

$$- 338.5 = 167$$

$$8322.1$$

$$- 55.5 = 168$$

$$8266.6$$

E.

$$5304.3$$

$$- 93.5 = 251$$

$$5210.8$$

$$- 31.7 = 252$$

$$5179.1$$

$$- 157.0 = 253$$

$$5022.1$$

$$- 206.8 = 254$$

$$4815.3$$

$$- 133.0 = 255$$

$$4682.3$$

$$- 457.5 = 256$$

$$4224.8$$

$$- 118.6 = 257$$

$$4106.2$$

$$- 73.4 = 258$$

$$4032.8$$

$$- 168.9 = 259$$

$$3863.9$$

$$- 23.7 = 260$$

$$3840.2$$

$$- 4. = 261$$

$$3836.2$$

$$- 257.7 = 262$$

$$3578.5$$

$$- 167.1 = 263$$

$$3411.4$$

$$- 126.0 = 264$$

$$3285.4$$

$$- 276.6 = 265$$

$$3008.8$$

$$- 111.8 = 266$$

$$2897.0$$

$$- 221.2 = 267$$

$$2675.8$$

$$4.36$$

$$2.88$$

$$\hline 7.24$$

$$99.91$$

$$65.94$$

$$\hline 165.85$$



**Ed Fletcher Papers**

**1870-1955**

**MSS.81**

**Box: 35 Folder: 29**

**Business Records - Reports -  
Alverson, C.S - Estimate to Fletcher**



**Copyright:** UC Regents

**Use:** This work is available from the UC San Diego Libraries. This digital copy of the work is intended to support research, teaching, and private study.

**Constraints:** This work is protected by the U.S. Copyright Law (Title 17, U.S.C.). Use of this work beyond that allowed by "fair use" requires written permission of the UC Regents. Permission may be obtained from the UC San Diego Libraries department having custody of the work (<http://libraries.ucsd.edu/collections/mscl/>). Responsibility for obtaining permissions and any use and distribution of this work rests exclusively with the user and not the UC San Diego Libraries.