

*Report and Index of
Underway Marine Geophysical Data*

Vancouver Expedition

Leg 25

(VANC25MV)

R/V Melville

(Issued Jul 2004)

Ports:

Port Moresby, PNG (20-Mar-04)

to

Port Moresby, PNG (02-Apr-04)

Chief Scientist: Andre Droxler

Rice University

andre@rice.edu

Computer Tech - Dan Jacobson

Resident Tech - Ron Comer

Post-Cruise processing and report preparation by the
Shipboard Technical Support Group,
Scripps Institution of Oceanography
La Jolla, CA 92093-0223

Note: *This is an index of underway geophysical data edited and processed after the completion of the leg and is intended primarily for informal use within the institution. This document is not to be reproduced or distributed outside Scripps without prior approval of the chief scientist or Shipboard Technical Support, Scripps Institution of Oceanography, La Jolla, California 92093-0223*

STS Cruise ID#299

Report and Index of Navigation and Underway Geophysical Data

Contents:

Index Chart - give track of cruise leg, dates, ports.

Track Charts - annotated with dates and hour ticks.

Profiles - depth, magnetic and gravity free air anomaly vs. distance.

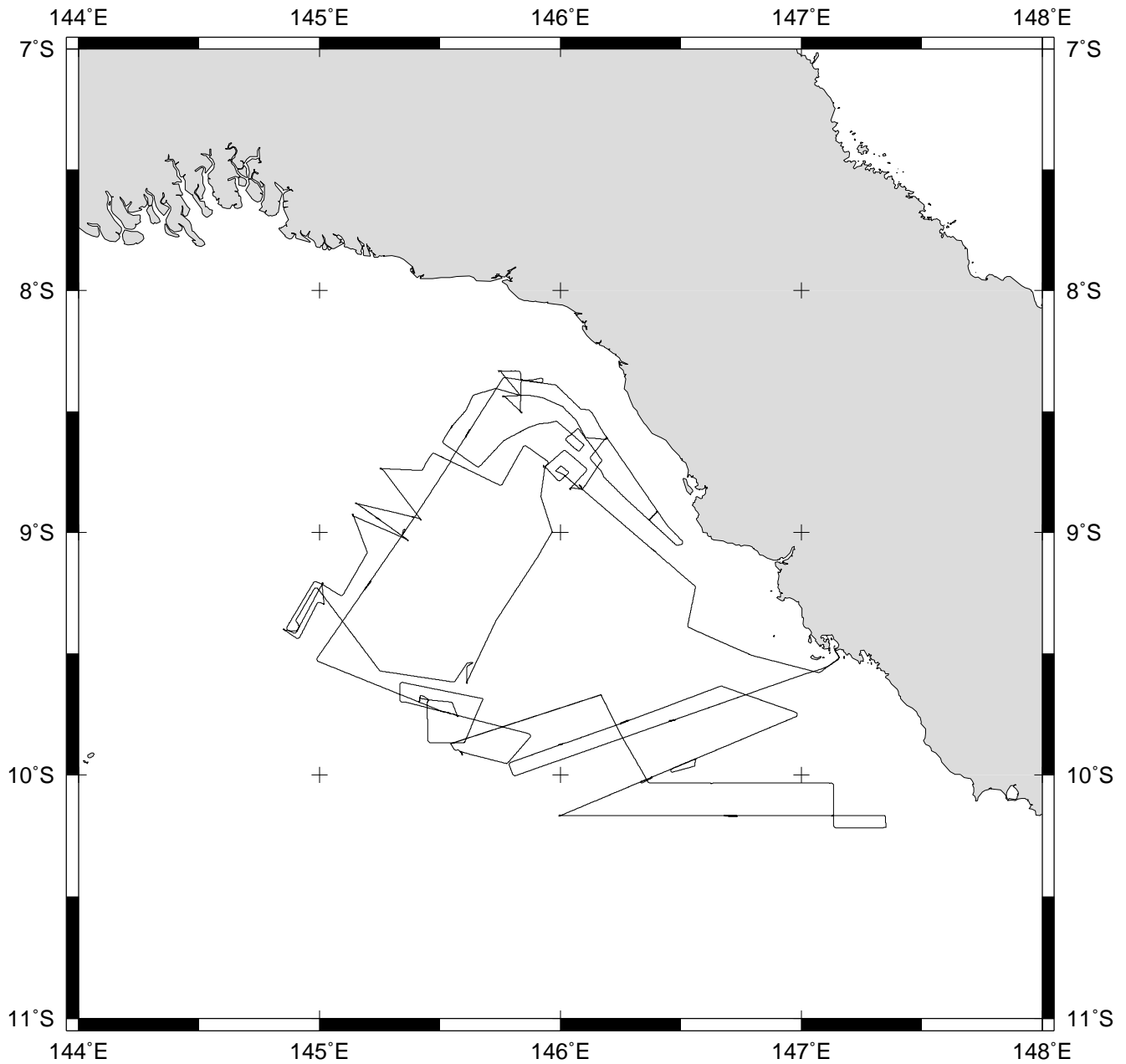
Sample Index - list of begin/end times and positions of all underway records as well as samples and measurements from other disciplines collected on the leg.

Note:

For information on the availability of this current digital data as well as archived digital data contact:

Stephen P. Miller
Geological Data Center
Scripps Institution of Oceanography
La Jolla, California 92093-0220
Phone: (858) 534-1898
Internet email: spmiller@ucsd.edu; or his website: <http://SIOExplorer@ucsd.edu>

Rev 05/2002



VANCOUVER EXPEDITION LEG 25 (VANC25MV)

=====

CHIEF SCIENTIST: Andre Droxler, Rice University

PORTS: Port Moresby - Port Moresby, Papua New Guinea

DATES: 20 March - 02 April 2004

SHIP: R/V Melville

TOTAL MILEAGE OF UNDERWAY DATA COLLECTED

Cruise-1521 miles

Magnetics-none collected

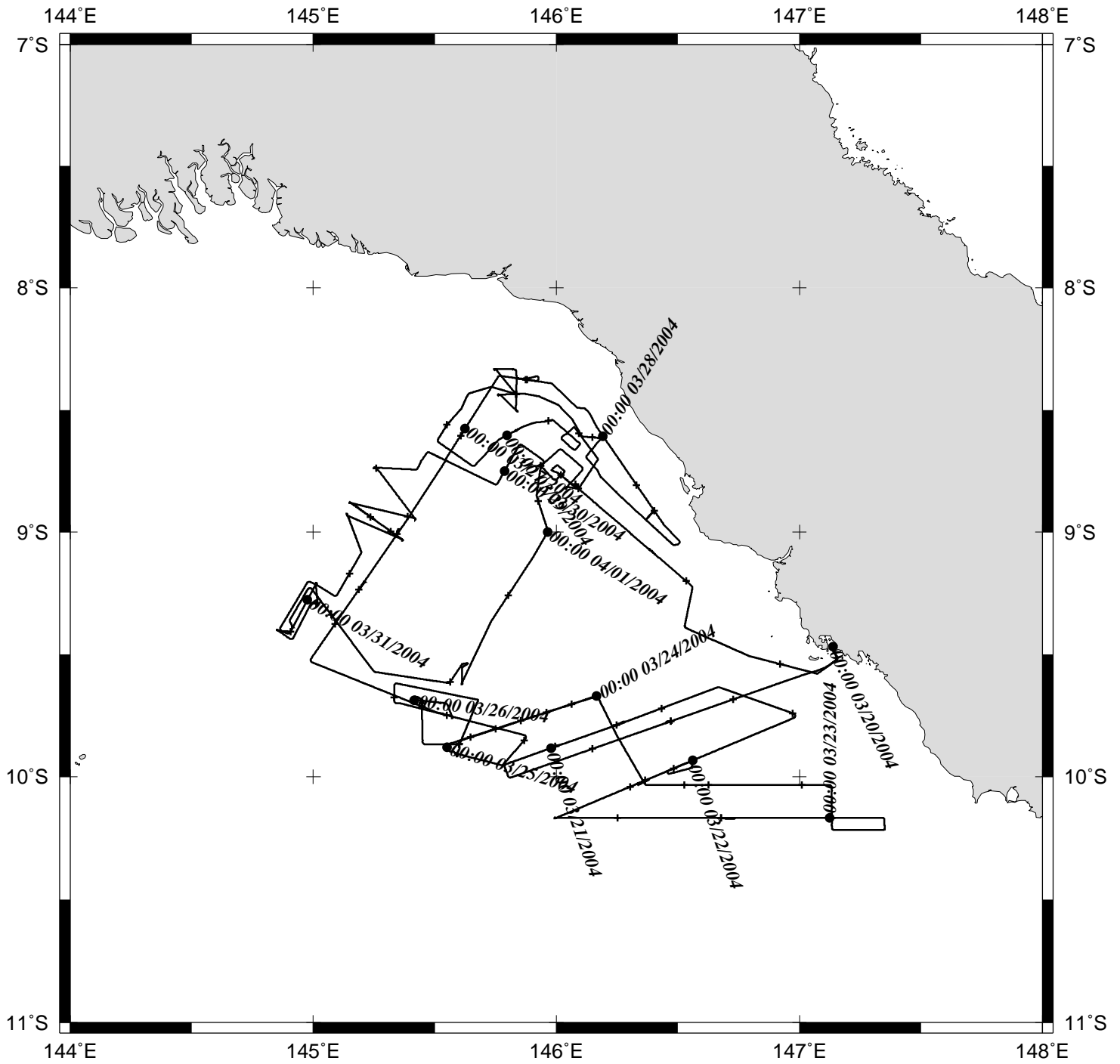
Bathymetry-1509 miles

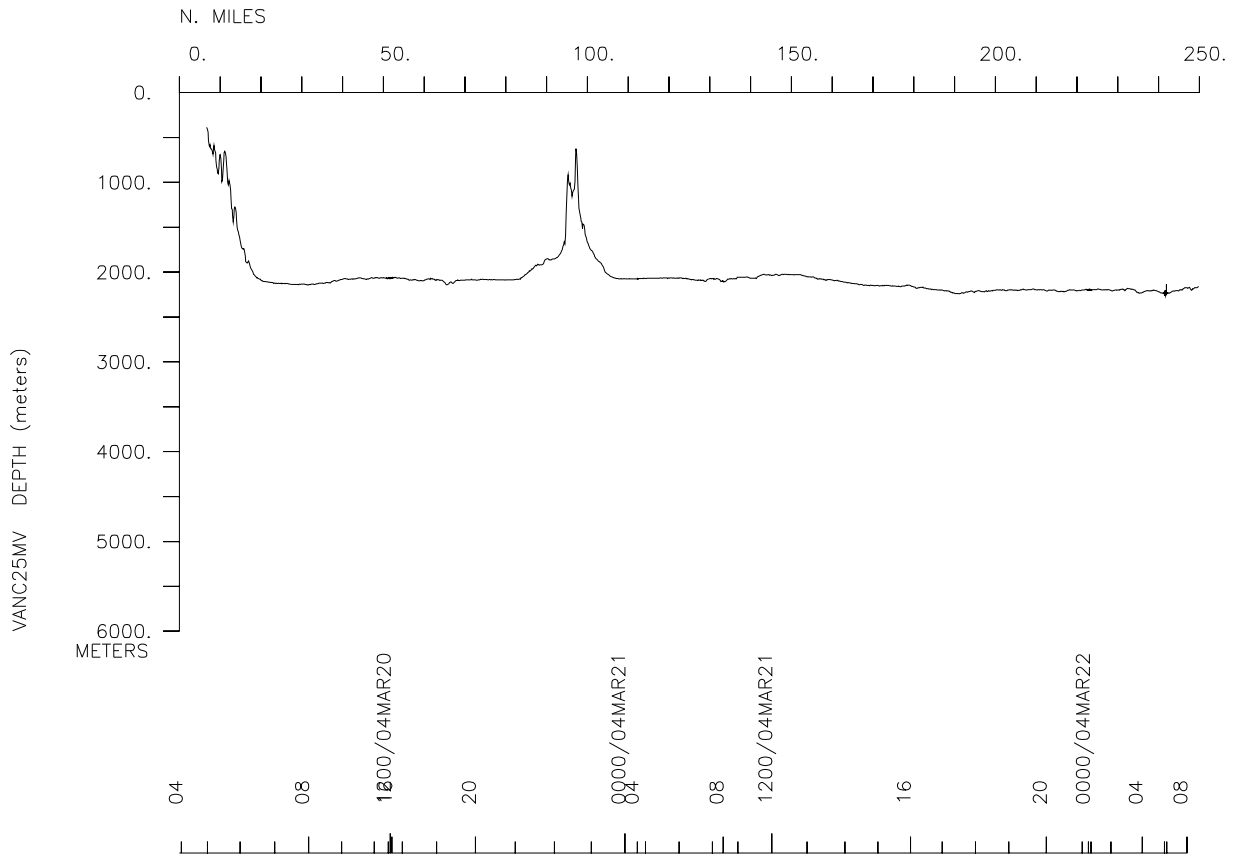
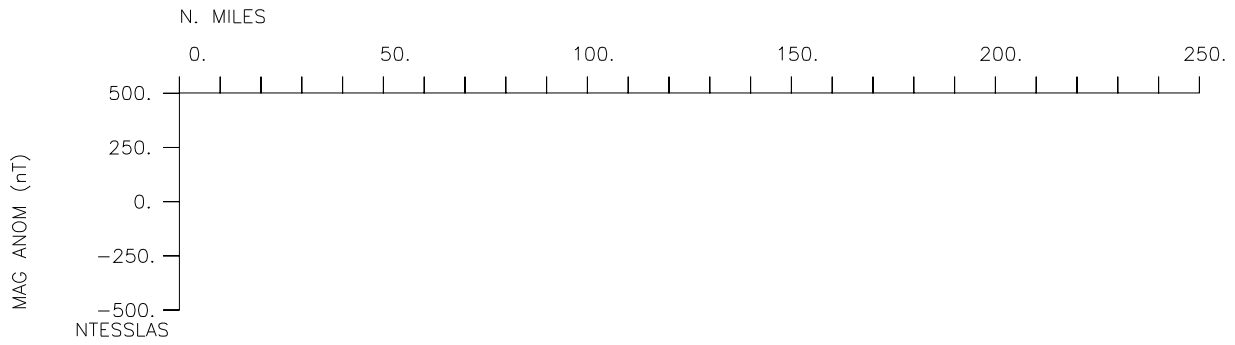
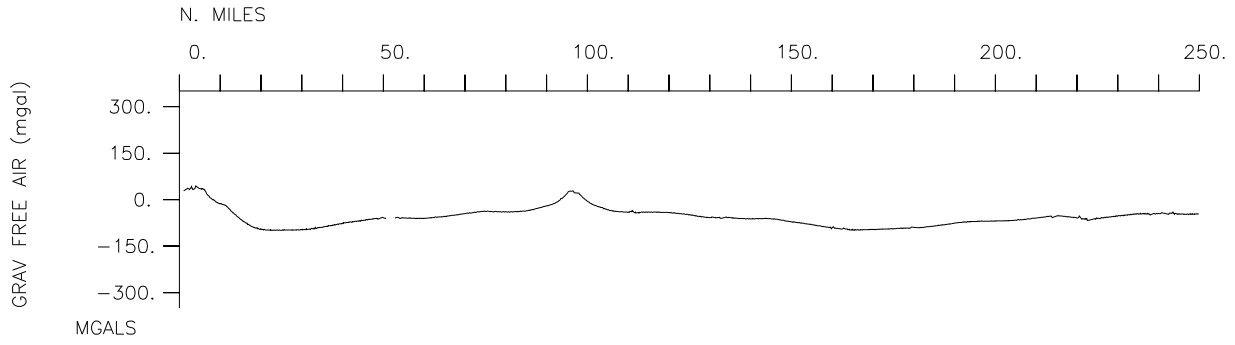
Seismic Reflection-none collected

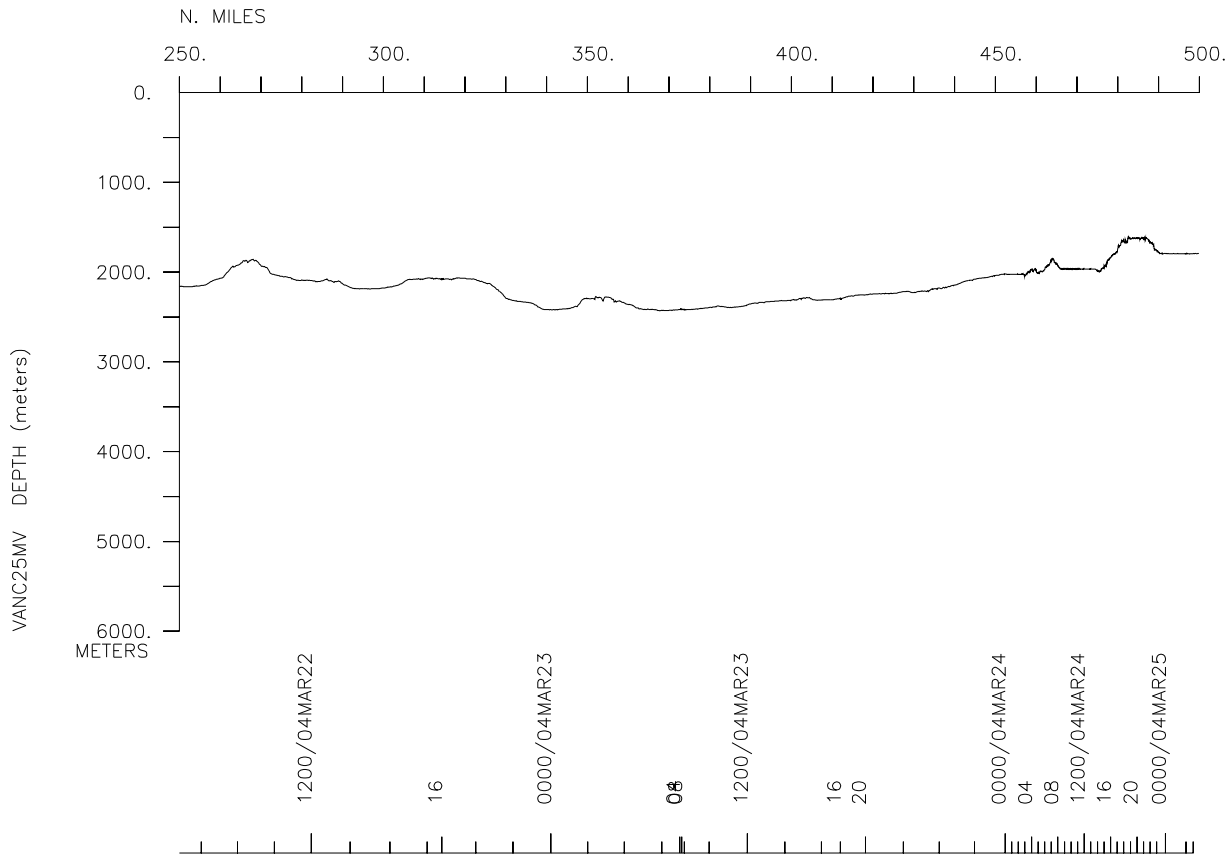
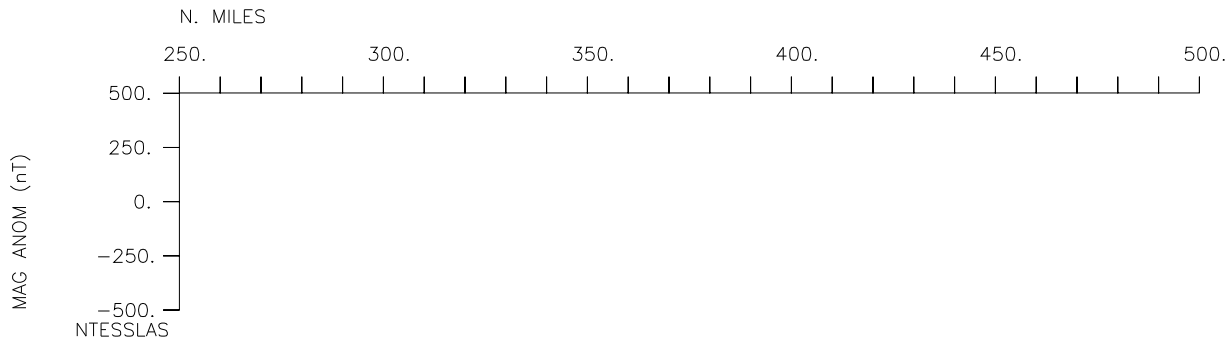
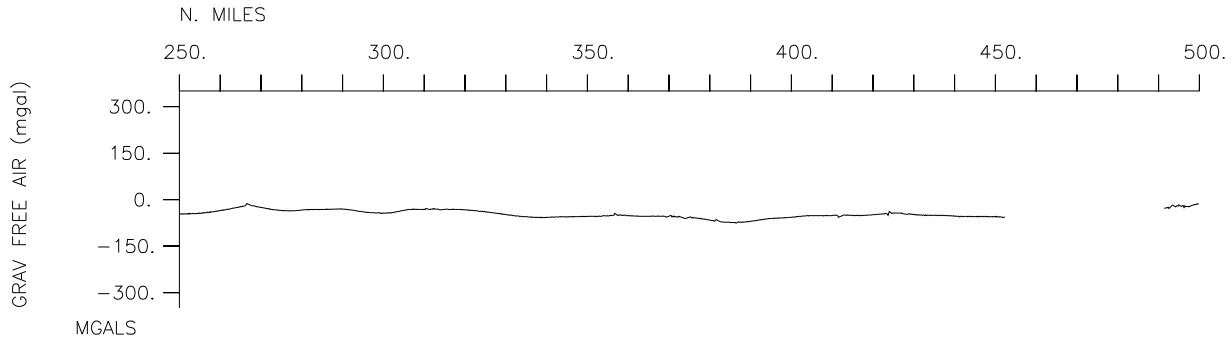
Multibeam-1509 miles

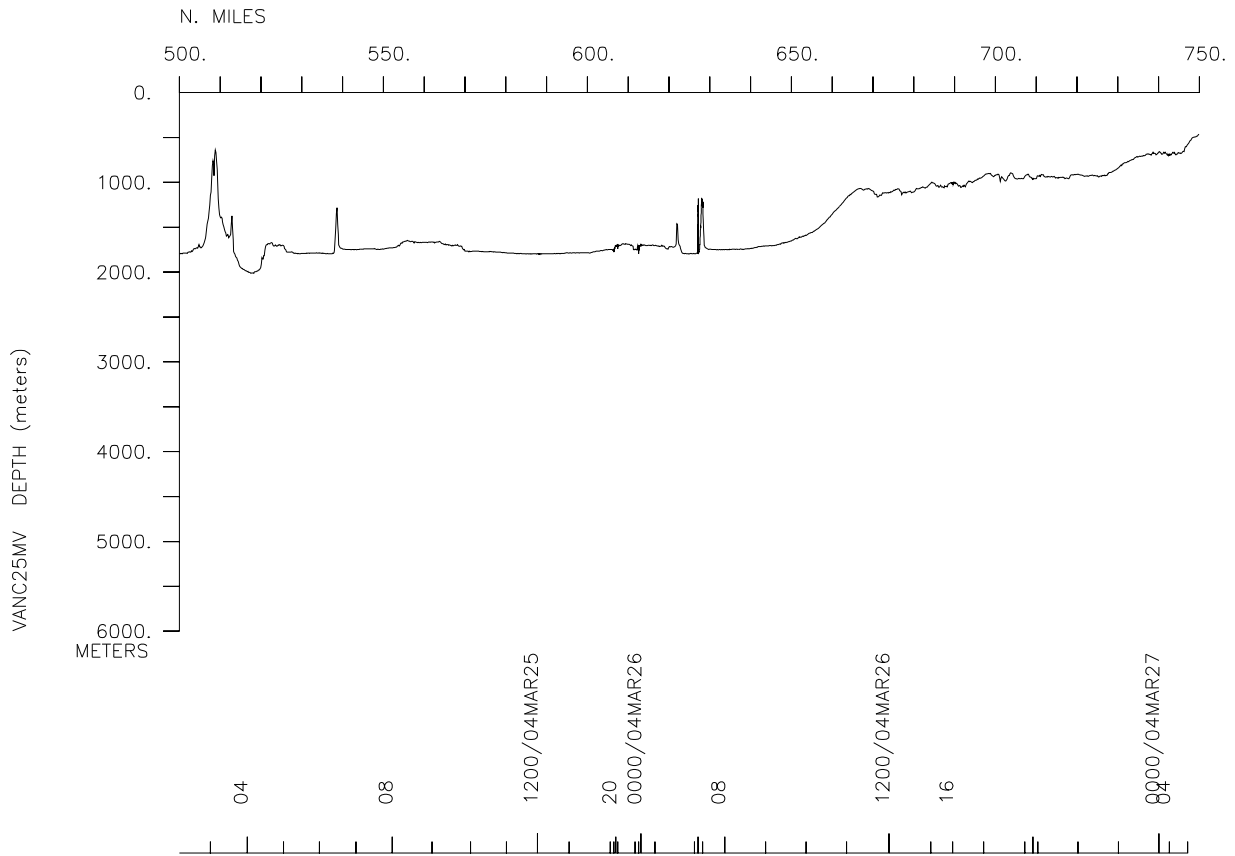
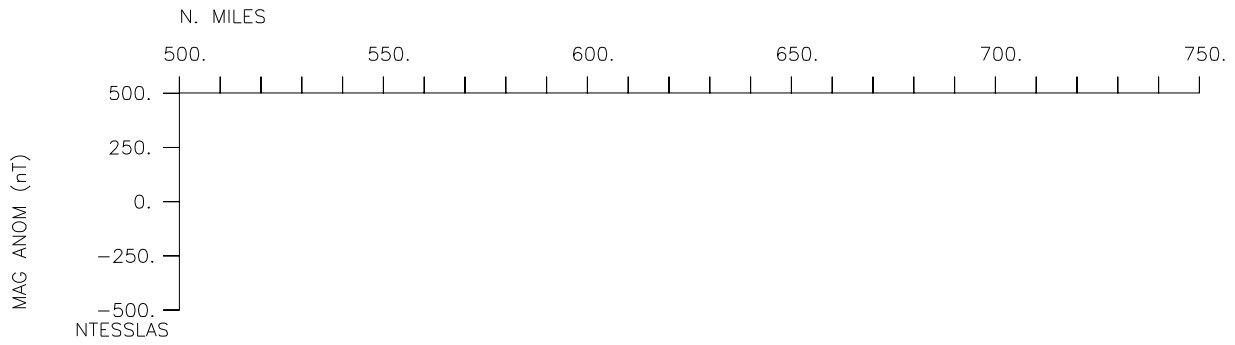
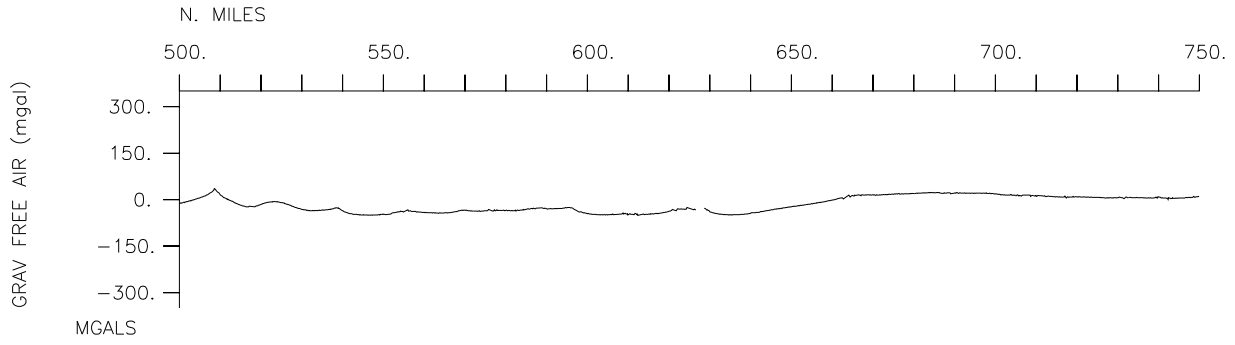
Gravity-1521 miles

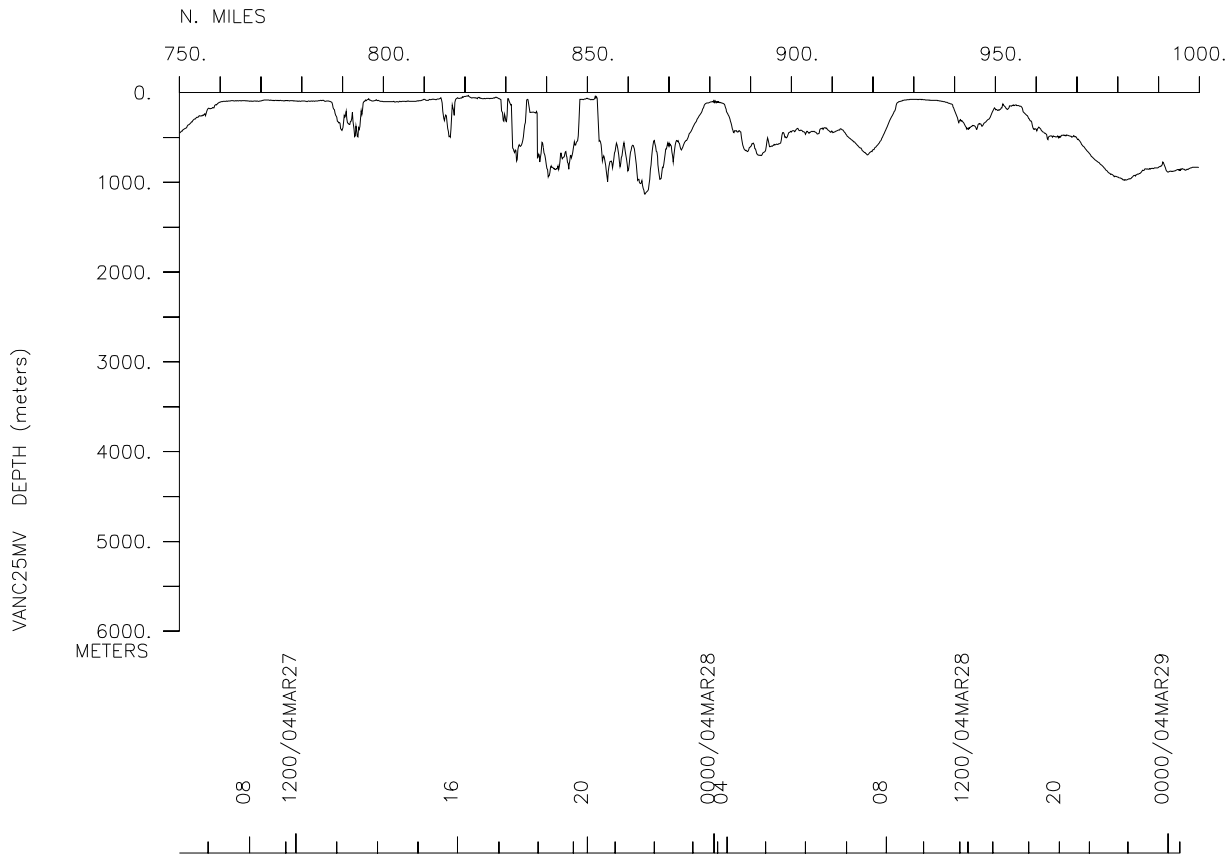
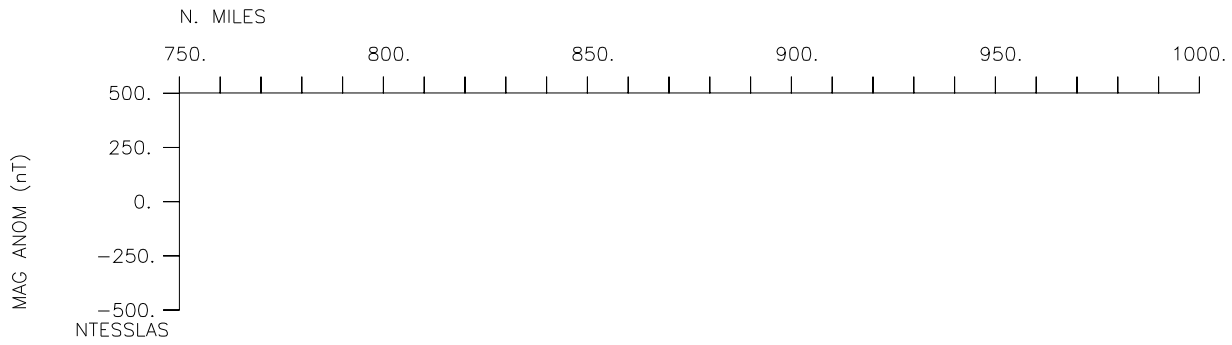
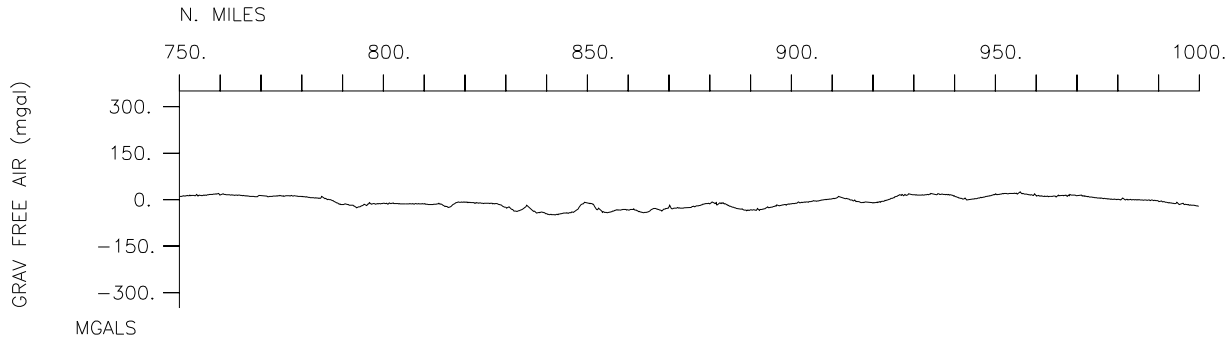
VANC25MV

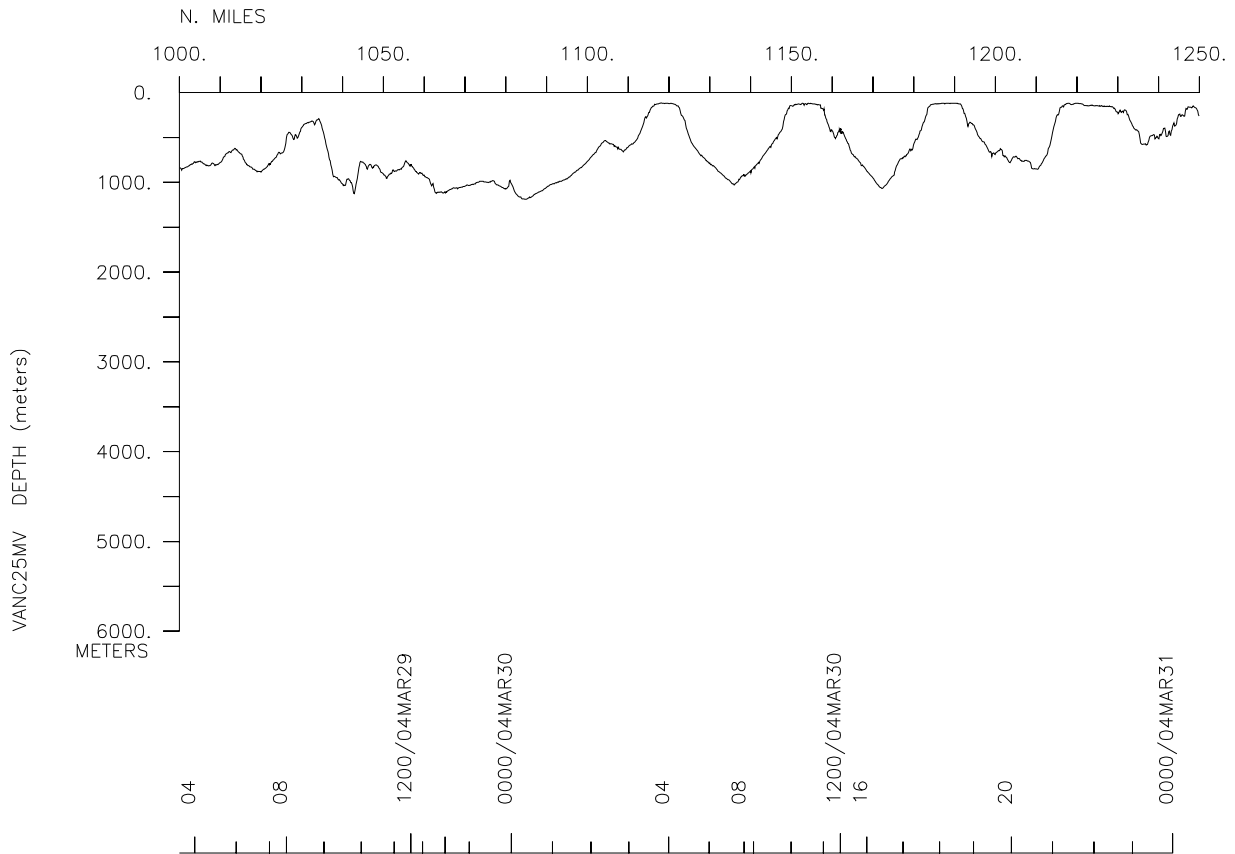
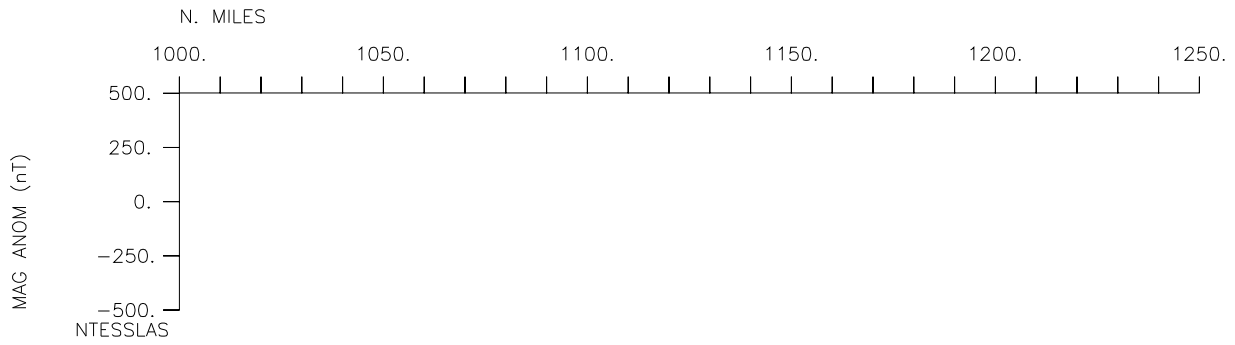
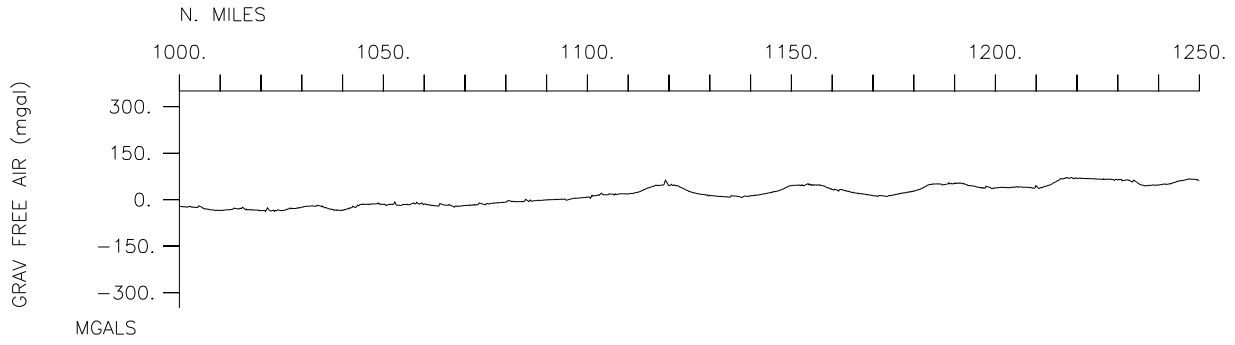


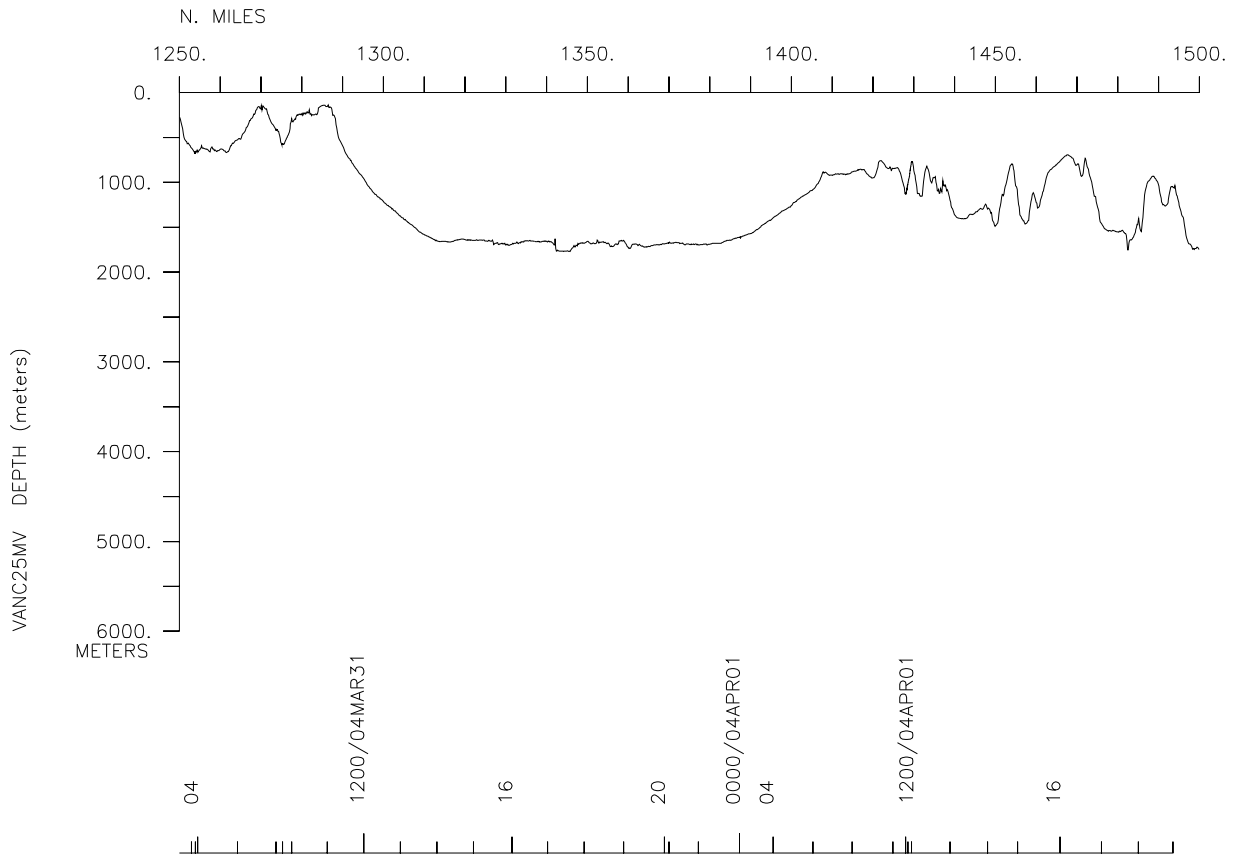
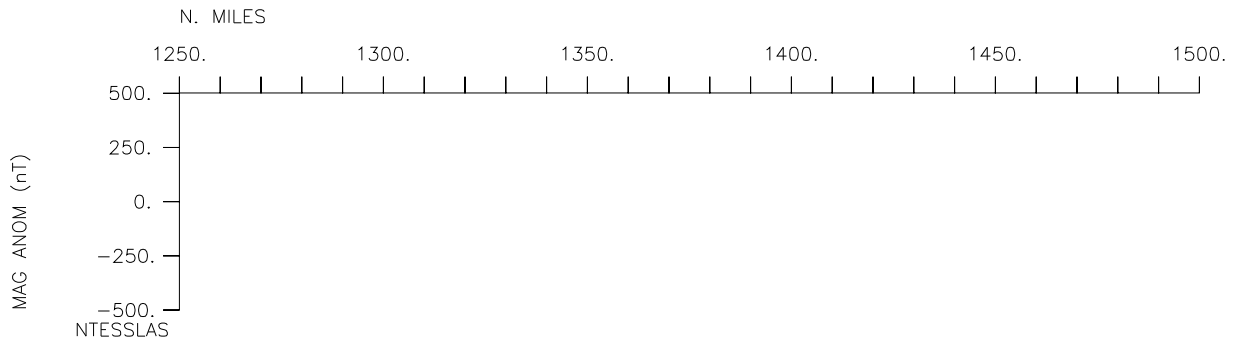
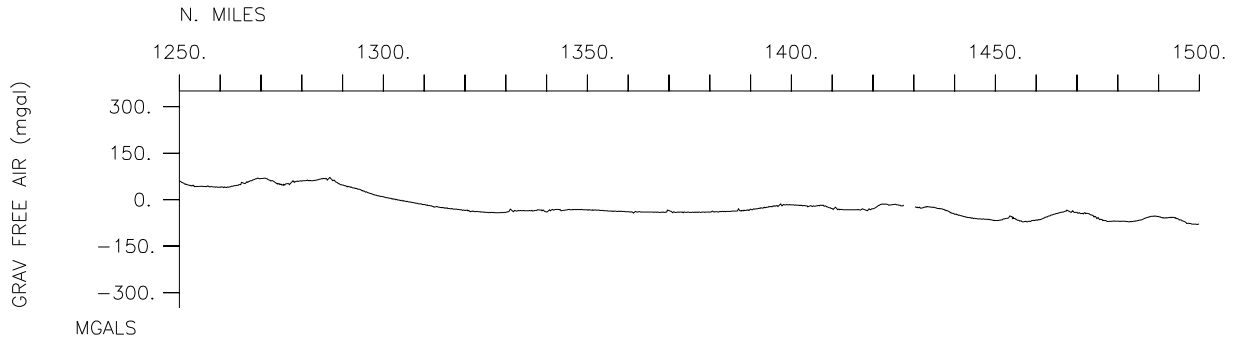


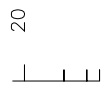
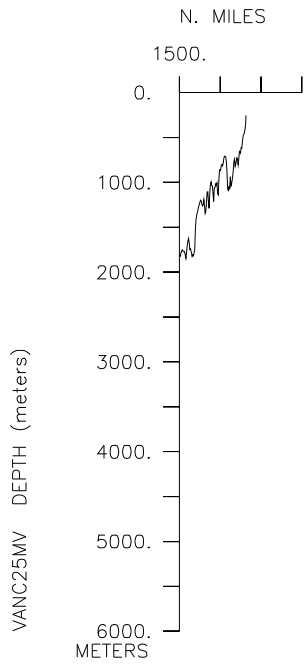
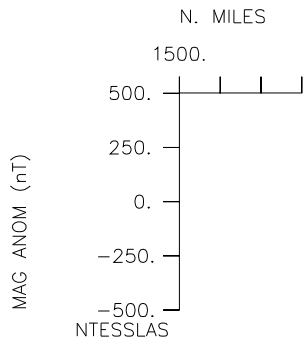
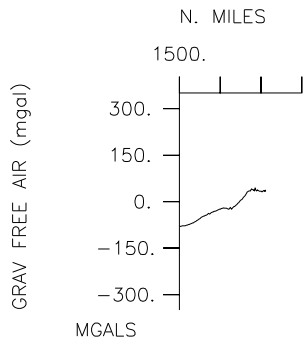












**** Ports ***

2356 190304 LGPT B Port Moresby, PNG 09-28.10S 147-08.31E f VANC25MV
 2305 010404 LGPT E Port Moresby, PNG 09-28.10S 147-08.31E f VANC25MV

**** Personnel ***

```

# *****NAME***** *****TITLE***** *****AFFILIATION***** **CRID**
#-----
PECS SIX Droxler, A. Chief Scientist Rice University VANC25MV
PESP SIX Bentley, S. Scientist Louisiana State U. VANC25MV
PESP SIX Dickens, G. Scientist Rice University VANC25MV
PESP SIX Peterson, L. Scientist Univ. of Miami VANC25MV
PESP SIX Opdyke, B. Scientist ANU VANC25MV
PESP SIX Mallarino, G. Scientist Rice University VANC25MV
PESP SIX Zarikian, C. Scientist Univ. of Miami VANC25MV
PESP SIX Demers, F. Technician Louisiana State U. VANC25MV
PESP OSU Hubbard, D. Technician Oregon State Univ. VANC25MV
PESP OSU Kaulk, P. Technician Oregon State Univ. VANC25MV
PESP OSU Moser, C. Technician Oregon State Univ. VANC25MV
PEST SIX Francis, J. Student Rice University VANC25MV
PEST SIX Olson, B. Student Rice University VANC25MV
PEST SIX Maher, J. Student Rice University VANC25MV
PEST SIX Tang, J. Student Rice University VANC25MV
PEST SIX Febo, L. Student Louisiana State U. VANC25MV
PEST SIX Muhammad, Z. Student Louisiana State U. VANC25MV
PEST SIX Patterson, L. Student Louisiana State U. VANC25MV
PEST SIX McFadden, M. Student Univ. of Miami VANC25MV
PEST SIX Spinapolice, C. Student Univ. of Miami VANC25MV
PEST UCSD Franklin, D. Observer U.C. San Diego VANC25MV
PERT STS Comer, R. Resident Tech Scripps Institution VANC25MV
PERT STS Roswell, J. Resident Tech Scripps Institution VANC25MV
PECT STS Jacobson, D. Computer Tech Scripps Institution VANC25MV
    
```

**** NOTES ***

#An 'X' in the (B)egin/(E)nd column following the sample code indicates no
 #sample or data recovered. A 'C' indicates continuation of data collection
 #from before the beginning or after the end of a particular leg, (moored
 #bottom instruments, for example.) The number appearing in the columns
 #between the sample identifier and the disposition code, for many sample
 #entries, is the water depth in corrected meters.

```

#GMT DDMMYY SAMP B SAMPLE DISP p CRUISE
#TIME DATE TZ CODE E IDENTIFIER CODE LATITUDE LONGITUDE c LEG-SHIP
#-----
    
```

**** Underway Data Curator - Shipboard Technical Support Group ext.41899 ***
 **** Digital Data Curator - Geological Data Center, S.P. Miller, ext.41898 ***

**** Underway Log Books ***

0438 200304 0 LBUW B underway log book STS 9-30.94S 147-09.39E g VANC25MV
 2016 020404 0 LBUW E underway log book STS 9-28.56S 147-08.79E g VANC25MV

**** MultiBeam Data (vertical beam with sidescan) ***

0458 200304 0 MBSR B v.beam & sidescan GDC 9-32.47S 147-07.53E g VANC25MV
 2123 010404 0 MBSR E v.beam & sidescan GDC 9-32.39S 147-07.76E g VANC25MV

#GMT	DDMMYY	SAMP	B	SAMPLE	DISP				p	CRUISE
#TIME	DATE	TZ	CODE	E IDENTIFIER	CODE	LATITUDE	LONGITUDE		c	LEG-SHIP
#-----	--	----	-	-----	-----	-----	-----	-----	-	-----
#*** Digital Gravity ***										
0414	200304	0	GVR	B Digital gravity	GDC	9-28.21S	147-08.19E	g		VANC25MV
2250	010404	0	GVR	E Digital gravity	GDC	9-28.63S	147-08.63E	g		VANC25MV
#*** Integrated Meteorological Acquisition System ***										
0414	200304	0	IMET	B weather measurements	GDC	9-28.21S	147-08.19E	g		VANC25MV
2305	010404	0	IMET	E weather measurements	GDC	9-28.56S	147-08.79E	g		VANC25MV
#*** Acoustic Doppler Current Profiler ***										
0414	200304	0	ADCP	B current measurements	GDC	9-28.21S	147-08.19E	g		VANC25MV
2305	010404	0	ADCP	E current measurements	GDC	9-28.56S	147-08.79E	g		VANC25MV
1326	200304	0	COPS	B Piston Core #5	SIX	9-46.37S	146-28.27E	g		VANC25MV
1424	200304	0	COPS	E Piston core #5 2044M	SIX	9-46.39S	146-28.27E	g		VANC25MV
1112	210304	0	COPS	B Piston Core #6	SIX	9-45.57S	146-19.64E	g		VANC25MV
1214	210304	0	COPS	E Core #6 2055M	SIX	9-42.52S	146-27.85E	g		VANC25MV
0737	210304	0	COMC	B Multicore #9	SIX	9-47.34S	146-14.87E	g		VANC25MV
0835	210304	0	COMC	E Multicore #9 2112M	SIX	9-47.34S	146-14.87E	g		VANC25MV
2218	210304	0	COPS	B Piston Core #7	SIX	9-56.00S	146-33.63E	g		VANC25MV
2325	210304	0	COPS	E Piston Core #7 2176M	SIX	9-56.00S	146-33.63E	g		VANC25MV
0451	220304	0	COMC	B Multi core #10	SIX	10-00.55S	146-22.71E	g		VANC25MV
0557	220304	0	COMC	E Multicore #10 2240M	SIX	10-00.56S	146-22.69E	g		VANC25MV
1731	220304	0	COPS	B Piston core #8	SIX	10-10.00S	146-40.66E	g		VANC25MV
1833	220304	0	COPS	E Piston Core #8 2059M	SIX	10-10.00S	146-40.66E	g		VANC25MV
0344	230304	0	COMC	B Multi core #11	SIX	10-10.00S	147-08.00E	g		VANC25MV
0450	230304	0	COMC	E Multi core #11 2425M	SIX	10-10.01S	147-08.00E	g		VANC25MV
1525	230304	0	COPS	B Piston core #9	SIX	10-02.00S	146-37.50E	g		VANC25MV
1627	230304	0	COPS	E Piston core #9 2277M	SIX	10-02.00S	146-37.50E	g		VANC25MV
0023	240304	0	COMC	B Multi Core #12	SIX	9-40.40S	146-09.36E	g		VANC25MV
0124	240304	0	COMC	E Multi Core #12 2026M	SIX	9-40.91S	146-07.78E	g		VANC25MV
0952	240304	0	COPS	B Piston Core #10	SIX	9-45.17S	145-54.60E	g		VANC25MV
1048	240304	0	COPS	E Piston Core#10 1949M	SIX	9-45.64S	145-53.14E	g		VANC25MV
1934	240304	0	COMC	B Multi Core #13	SIX	9-50.05S	145-39.49E	g		VANC25MV
2023	240304	0	COMC	E Multi Core#13 1625M	SIX	9-50.46S	145-38.22E	g		VANC25MV
1245	250304	0	COPS	B Piston Core #11	SIX	9-52.00S	145-36.00E	g		VANC25MV
1337	250304	0	COPS	E Piston Core#11 1774M	SIX	9-52.00S	145-36.00E	g		VANC25MV
1421	260304	0	COPS	B Piston core #12	SIX	9-14.11S	145-11.24E	g		VANC25MV
1454	260304	0	COPS	E Piston core#12 994M	SIX	9-14.11S	145-11.24E	g		VANC25MV
1936	260304	0	COMC	B Multi Core #14	SIX	9-00.50S	145-20.70E	g		VANC25MV
2008	260304	0	COMC	E Multi Core #14 966M	SIX	9-00.50S	145-20.70E	g		VANC25MV

#GMT	DDMMYY	SAMP	B	SAMPLE	DISP				p	CRUISE
#TIME	DATE	TZ	CODE	E IDENTIFIER	CODE	LATITUDE	LONGITUDE		c	LEG-SHIP
#-----	---	---	---	-----	---	-----	-----	---	---	-----
0038	270304	0	COMC	B Multi Core #15	SIX	8-36.32S	145-36.36E	g		VANC25MV
0100	270304	0	COMC	E Multi Core #15	695M SIX	8-36.32S	145-36.36E	g		VANC25MV
0324	270304	0	COPS	B Piston core #13	SIX	8-36.32S	145-36.36E	g		VANC25MV
0345	270304	0	COPS	E Piston core #13	675M SIX	8-36.31S	145-36.36E	g		VANC25MV
0927	270304	0	COPS	B Piston Core #14	SIX	8-22.20S	145-50.20E	g		VANC25MV
0930	270304	0	COPS	E P. C. #14	70M SIX	8-22.20S	145-50.20E	g		VANC25MV
1118	270304	0	COMC	B Multi Core #16	SIX	8-22.20S	145-50.20E	g		VANC25MV
1121	270304	0	COMC	E Core #16	92M SIX	8-22.20S	145-50.20E	g		VANC25MV
1948	270304	0	COMC	B Multi Core #17	SIX	8-54.72S	146-24.14E	g		VANC25MV
1952	270304	0	COMC	E Multi Core #17	64M SIX	8-54.72S	146-24.14E	g		VANC25MV
2349	270304	0	COMC	B Multi Core #18	SIX	8-36.43S	146-11.52E	g		VANC25MV
2355	270304	0	COMC	E Multi Core #18	101M SIX	8-36.43S	146-11.51E	g		VANC25MV
0204	280304	0	COPS	B Piston core #15	SIX	8-36.88S	146-11.13E	g		VANC25MV
0210	280304	0	COPS	E Piston core	80M SIX	8-36.88S	146-11.13E	g		VANC25MV
1047	280304	0	COPS	B Piston Core #16	SIX	8-26.08S	145-50.02E	g		VANC25MV
1101	280304	0	COPS	E Piston Core #16	384M SIX	8-26.08S	145-50.02E	g		VANC25MV
1304	280304	0	COMC	B Multi Core #19	SIX	8-26.08S	145-50.02E	g		VANC25MV
1319	280304	0	COMC	E Multi Core #19	406M SIX	8-26.08S	145-50.02E	g		VANC25MV
1921	280304	0	COPS	B Piston Core #17	SIX	8-33.65S	145-33.01E	g		VANC25MV
1938	280304	0	COPS	E Piston Core #17	477M SIX	8-33.65S	145-33.01E	g		VANC25MV
0052	290304	0	COPS	B Piston Core #18	SIX	8-35.07S	145-50.00E	g		VANC25MV
0118	290304	0	COPS	E Piston Core #18	842M SIX	8-35.07S	145-50.00E	g		VANC25MV
0615	290304	0	COMC	B Multi Core #20	SIX	8-35.60S	146-02.74E	g		VANC25MV
0638	290304	0	COMC	E Multi Core #20	800M SIX	8-35.60S	146-02.74E	g		VANC25MV
1213	290304	0	COPS	B Piston Core #19	SIX	8-46.00S	146-01.10E	g		VANC25MV
1237	290304	0	COPS	E Piston Core #19	792M SIX	8-46.00S	146-01.10E	g		VANC25MV
1806	290304	0	COPS	B Piston Core #20	SIX	8-43.73S	145-56.15E	g		VANC25MV
1838	290304	0	COPS	E Piston Core#20	1094M SIX	8-43.73S	145-56.15E	g		VANC25MV
2042	290304	0	COMC	B Multi Core #21	SIX	8-43.73S	145-56.15E	g		VANC25MV
2117	290304	0	COMC	E Multi Core #21	1118M SIX	8-43.73S	145-56.15E	g		VANC25MV
0632	300304	0	COPS	B Piston Core #21	SIX	8-56.18S	145-23.32E	g		VANC25MV
0701	300304	0	COPS	E Piston core #21	910M SIX	8-56.18S	145-23.32E	g		VANC25MV
1210	300304	0	COPS	B Piston Core #22	SIX	8-56.28S	145-14.14E	g		VANC25MV
1225	300304	0	COPS	E Piston Core #22	401M SIX	8-56.28S	145-14.14E	g		VANC25MV
1414	300304	0	COMC	B Multi core #22	SIX	8-56.35S	145-14.06E	g		VANC25MV
1433	300304	0	COMC	E Multi core #22	454M SIX	8-56.35S	145-14.06E	g		VANC25MV
0138	310304	0	COPS	B Piston Core #23	SIX	9-17.69S	145-01.11E	g		VANC25MV
0208	310304	0	COPS	E Piston core #23	647M SIX	9-17.69S	145-01.11E	g		VANC25MV

#GMT #TIME #-----	DDMMYY DATE -----	SAMP TZ ---	B CODE -	SAMPLE IDENTIFIER -----	DISP CODE -----	LATITUDE -----	LONGITUDE -----	p c -	CRUISE LEG-SHIP -----
0624	310304	0	COPS	B Piston Core #24	SIX	9-24.40S	144-54.37E	g	VANC25MV
0638	310304	0	COPS	E Piston core #24 399M	SIX	9-24.41S	144-54.37E	g	VANC25MV
0845	310304	0	COMC	B Multicore #23	SIX	9-23.29S	144-54.98E	g	VANC25MV
0902	310304	0	COMC	E M.C. #23 586M	SIX	9-23.29S	144-54.98E	g	VANC25MV
2027	310304	0	COMC	B Multi Core #24	SIX	9-14.55S	145-48.62E	g	VANC25MV
2117	310304	0	COMC	E Multi Core #24 1677M	SIX	9-14.55S	145-48.62E	g	VANC25MV
0027	010404	0	COPS	B Piston Core #25	SIX	8-60.00S	145-58.00E	g	VANC25MV
0115	010404	0	COPS	E Piston Core#25 1595M	SIX	8-60.00S	145-58.00E	g	VANC25MV
#*** Dredges ***									
1826	250304	0	DRRO	B Dredge #2	SIX	9-42.38S	145-26.78E	g	VANC25MV
2120	250304	0	DRRO	E Dredge #2 1752M	SIX	9-41.57S	145-27.17E	g	VANC25MV
2224	250304	0	DRRO	B Dredge #3	SIX	9-41.69S	145-24.88E	g	VANC25MV
0056	260304	0	DRRO	E Dredge #3 1760M	SIX	9-41.21S	145-24.95E	g	VANC25MV
0326	260304	0	DRRO	B Dredge #4	SIX	9-44.90S	145-32.92E	g	VANC25MV
0659	260304	0	DRRO	E Dredge #4 1800M	SIX	9-44.54S	145-32.05E	g	VANC25MV
0737	010404	0	DRRO	B Dredge #5	SIX	8-49.31S	146-05.41E	g	VANC25MV
1056	010404	0	DRRO	E Dredge #5 1146M	SIX	8-48.22S	146-04.65E	g	VANC25MV
#*** Net Tows***									
1145	200304	0	ONVT	B Vert. Net Tow 3	SIX	9-46.38S	146-28.28E	g	VANC25MV
1217	200304	0	ONVT	E Vert. Net Tow 3 200M	SIX	9-46.38S	146-28.27E	g	VANC25MV
0920	230304	0	ONVT	B Vert. Net Tow 4	SIX	10-10.00S	147-08.00E	g	VANC25MV
0957	230304	0	ONVT	E Vert. Net Tow 4 200M	SIX	10-10.08S	147-07.67E	g	VANC25MV
0850	240304	0	ONVT	B Vert. Net Tow 5	SIX	9-44.65S	145-56.21E	g	VANC25MV
0922	240304	0	ONVT	E Vert. Net Tow 5 200M	SIX	9-44.92S	145-55.38E	g	VANC25MV
0217	270304	0	ONVT	B Vert. Net Tow 6	SIX	8-36.32S	145-36.36E	g	VANC25MV
0253	270304	0	ONVT	E Vert. Net Tow 6 200M	SIX	8-36.32S	145-36.36E	g	VANC25MV
#*** Conductivity, Temperature, Depth ***									
0700	230304	0	TDCT	B CTD #1	SIX	10-10.00S	147-08.00E	g	VANC25MV
0914	230304	0	TDCT	E CTD #1 2381M	SIX	10-10.00S	147-08.00E	g	VANC25MV
1630	290304	0	TDCT	B CTD #2	SIX	8-43.73S	145-56.15E	g	VANC25MV
1728	290304	0	TDCT	E CTD #2 1010M	SIX	8-43.73S	145-56.15E	g	VANC25MV
#	End Sample Index								VANC25MV