

National Archives & Public Records Services  
of Papua New Guinea

# PATROL REPORTS

District : Western Highlands  
Station : Kandep  
Volume : 5  
ISBN NO : 9980-910-95-X  
Accession NO : 496  
Period : 1963-1964

Filmed by for the National Archives of Papua New Guinea,  
Port Moresby, 1994.

Sole Custodian: National Archives of Papua New Guinea.

# Papua New Guinea Patrol Reports

Digitized version made available by



**Copyright:** Government of Papua New Guinea. This digital version made under a license granted by the National Archives and Public Records Services of Papua New Guinea.

**Use:** This digital copy of the work is intended to support research, teaching, and private study.

**Constraints:** This work is protected by the U.S. Copyright Law (Title 17, U.S.C.) and the laws of Papua New Guinea. Use of this work beyond that allowed by "fair use" requires written permission of the National Archives of Papua New Guinea. Responsibility for obtaining permissions and any use and distribution of this work rests exclusively with the user and not the UC San Diego Library.

**Note on digitized version:** A microfiche copy of these reports is held at the University of California, San Diego (Mandeville Special Collections Library, MSS 0215). The digitized version presented here reflects the quality and contents of the microfiche. Problems which have been identified include misfiled reports, out-of-order pages, illegible text; these problems have been rectified whenever possible. The original reports are in the National Archives of Papua New Guinea (Accession no. 496).



PATROL REPORTS WESTERN HIGHLANDS 1963/64

KANUP & FORGARA

<u>Patrol No.</u>	<u>Officer Conducting Patrol</u>	<u>Area Patrolled</u>
<u>KANUP</u>		
1-35/64	D. Schupp	Lai-Mariant Census Division
4-35/64	D. Schupp	• Upper Lai and Waga
6-35/64	D. Schupp	Lai-Mariant Census Division
<u>FORGARA</u>		
1-35/64 ✓	D.H. Reid	Forgara-Paiela Census Division
4-35/64 ✓	D.H. Reid	Paiela Census Division
6-35/64	D.H. Reid	Forgara-Leiagar-Forgara

1774 . 472

RECEIVED

15 JUL 1963



TERRITORY OF PAPUA AND NEW GUINEA

PATROL REPORT

Local

District of Western Highlands Report No. 1 of 1962/63

Patrol Conducted by D. Schurz, Patrol Officer

Area Covered IAL/MARLET County Division

Patrol Accompanied by Europeans: E. J. Sewall, Agricultural Officer; Natives: 60 Carabaras

Duration: From 9/6/1963 to 21/6/1963

Number of Days 17 days

Did Medical Assistant Accompany? Yes

Last Patrol in Area by District Service / 11/19.62

Medical / 12/19.52

Map Reference 1) Nalung District Army Series 2) Sketch Map No. 1 of 1962

Object of Patrol 1) Revision of Census 2) Census Roll updating 3) Medical Survey 4) Agric. Survey 5) Land Investigations 6) General Administration 7) Triple Antigen Injections.

Director of Native Affairs

FORT MORESBY

Forwarded, please.

District Commissioner

Amount Paid for War Damage Compensation £

Amount Paid from D.N.E. Trust Fund £

Amount Paid from P.E.D.P. Trust Fund

67-14-1

Kenedebu, Pagan.

1st August, 1963.

The District Officer,  
Western Highlands District,  
Mt. Hagen.

PATROL REPORT NO. 1-51/63 - KENNEDU

Receipt of the above-mentioned Patrol Report is acknowledged with thanks.

I agree that the road development will assist in getting the people's produce to market and be of benefit during the House of Assembly elections in 1964. I am gratified to note that funds have been made available for this work.

It is important that all land disputes be listed and forwarded through your District Office to Headquarters. It is agreed that the disputes could be aggravated by too deep probing at this stage and might create undesirable situations. You should advise your officers not to probe too deeply at this stage when we are not in a position to settle such disputes.

It is pleasing to note that 3 departments were represented on the patrol and technical officers have recorded their results which should be of use to future patrols in the MAMARIG area.

The spread of health services should follow the survey by the medical personnel accompanying the patrol. I assume you will take this up with the District Medical Officer.

It is obvious that the Administration is highly thought of by the people as revealed in their enthusiastic welcome at ceremonial grounds and the food supplied. I am sure the presence of officers from technical departments considerably influenced the people's attitudes.

The officers put up a very creditable performance in having completed the preliminary lists from which the Green Roll will be compiled. It is evident that the people are becoming politically conscious and you must be prepared to offer advice and guidance in this field.

You should ensure that the councils in the Mamari area do not take part in stirring up land disputes in order to obtain land for people from their own area.

.../2

✓

Your action concerning the signature was correct.

It is interesting to note that the general situation is generally good and that attention for the purpose of completing the House Bill was excellent.

A good report.

*[Handwritten signature]*  
[Illegible printed name]

67-14-1J

WHS. 412

Department of Native Affairs,  
Western Highlands District,  
MOUNT HAGEN.

24th July, 1963.

The Assistant District Officer,  
Sub-District Office,  
LALAGAN.

KANDOP PATROL REPORT NO. 3/1963-64.  
LAL/MARIANT CENSUS DIVISION  
MR. D. SCHEFF, PATROL OFFICER.

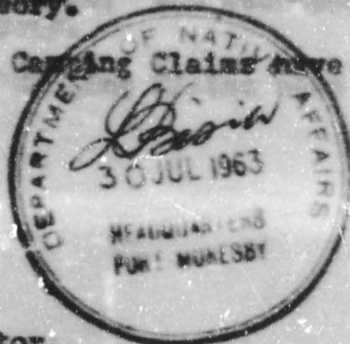
The native situation in the area appears to be good, notwithstanding the lethargic Village Officials and their non-enthusiastic classes.

Until such time as the Kandop-Lalagan Road is completed, the people will see no return for their efforts. This road is essential if the area is to develop. Transport has arrived for Patrol Posts similar to Kandop, so this Post may expect their vehicles in the near future. It is important that the road is pushed along quickly and finished before the wet and pandemic seasons at the end of the year. Besides aiding development and enabling social services to operate, the road system will prove of enormous benefit in the House of Assembly Elections early in 1964. With the staff now available to you in the Sub-District, you will be able to position an officer at either ends of the road and they, by direct and continuous supervision, should have no difficulty in finishing the work in four months. The District Commissioner has granted some funds for this work.

As advised previously, all land disputes are to be listed and forwarded through this office to Headquarters. It is to be hoped that the request for registration of the disputes will not make them active again, as it appears that it will be a considerable time before any action can be taken on any but the most explosive.

The Census does not show a very satisfactory position. The net generic increase of .75% per annum is by far the lowest in the District. Is there any particular reason for this; the accompanying Medical Assistant may have a theory.

Camping Claims have been passed for payment.



c.c.

The Director,  
Department of Native Affairs,  
KORORORU.

(R.S. BELL).  
a/District Officer.

The above-mentioned report for your information,  
please.

*R.S. Bell*  
(R.S. BELL) a/Dist. Off.



WAB/JW

WHD, 412

Department of Native Affairs,  
Western Highlands District,  
MOUNT JAGAH.

24th July, 1963.

ns

The Assistant District Officer,  
Sub-District Office,  
LALAGAN.

KANDAP PATROL REPORT NO. 1/1963-64  
LALAGAN DISTRICT DIVISION  
MR. D. SCHIPP, PATROL OFFICER.

The native situation in the area appears to be good, notwithstanding the lethargic Village Officials and their non-enthusiastic clansmen.

Until such time as the Kandap-Lalagan Road is completed, the people will see no return for their efforts. This road is essential if the area is to develop. Transport has arrived for Patrol Posts similar to Kandap, so this Post may expect their vehicles in the near future. It is important that the road is pushed along quickly and finished before the wet and pestiferous seasons at the end of the year. Besides aiding development and enabling social services to operate, the road system will prove of enormous benefit in the House of Assembly Elections early in 1964. With the staff now available to you in the Sub-District, you will be able to position an officer at either ends of the road and they, by direct and continuous supervision, should have no difficulty in finishing the work in four months. The District Commissioner has granted some funds for this work.

As advised previously, all land disputes are to be listed and forwarded through this office to Headquarters. It is to be hoped that the request for registration of the disputes will not make them active again, as it appears that it will be a considerable time before any action can be taken on any but the most explosive.

The Census does not show a very satisfactory position. The net generic increase of .75% per annum is by far the lowest in the District. Is there any particular reason for this; the accompanying Medical Assistant may have a theory.

Camping Claims have been passed for payment.

(R.S. BELL).  
s/District Officer.

c.c.

The Director,  
Department of Native Affairs,  
KOROROGU.

The above-mentioned report for your information,  
please.

*R.S. Bell*  
(R.S. BELL) s/Dist. Off.

TERRITORY OF PAPUA AND NEW GUINEA.

PATROL REPORT NUMBER NO: OF 1962/63.

AREA PATROLLED - LAI/MARIANT CENSUS DIVISION.

PATROL ACCOMPANIED BY:-  
Mr. G. Murray. Medical Assistant.  
Mr. L. Sewell. Agric. Officer.  
5 Members of R.P. & N.G.C.  
2 Interpreters.  
2 Aid Post Orderlies.  
65 Carriers.

DURATION OF PATROL:- 4.6.63 to 20.6.63  
17 days.

LAST PATROL TO AREA.

MAP REFERENCE.

- (1) WABAG Fournal Army Series
- (2) Sketch map :- Report No:1 of 1959/60.

OBJECT OF PATROL

- (1) Revision of Census.
- (2) Compilation of Common Electoral Roll.
- (3) Medical Survey.
- (4) Agricultural Survey.
- (5) Land Investigations.
- (6) Triple Antigen Injections.

*D. Schuff*  
.....  
( D. SCHUFF )  
Patrol Officer.

REPORT

Tuesday 4th June:

The patrol departed Wandep Patrol Post at 1235 hours for PINDAGA. Population census and Medical survey conducted. Completed at 1440 hours. The patrol visited the Roman Catholic Mission to discuss a native complaint. Departed PINDAGA 1520 hours and the patrol 1540 hours. Camp established. Food purchased.

Wednesday 5th:

The patrol at KOMBOROS. Population census commenced at 0850 hours and completed 1030 hours. The KOMBOROS AND MAURU Groups discussed road work and further items. The patrol then departed for ARAWALP at 1140 hours and arrived at 1240 hours. The census and medical survey commenced at 1300 hours and was completed. The patrol departed for KALIMAKA arriving at 1500 hours. Camp established and discussions held with local officials. Camped KALIMAKA.

Thursday 6th:

The patrol at KALIMAKA. Census of KALIMAKA Group commenced at 825 hours and completed at 0925 hours. The patrol departed for GIN where the GIN Group population was revised and the patrol then departed for SUPI at 1250 hours arriving at 1440 hours. Camp established and census books revised and compiled. Camped.

Friday 7th:

Patrol at SUPI. Census commenced at 0810 hours of the KAMA and SUPI Groups. Completed at 1020 hours. Departed TIBJIPAK to conduct Land Investigation and Survey. Investigation completed at 1320 and proceeded to YURIPAGA arriving at 1350 hours. Land Survey and Census books attended too. Food purchased and Camp established.

Saturday 8th:

At YURIPAGA census of YURIPAGA, WER, KEURU, MUMUNDU Groups commenced at 0830 hours and completed 1305 hours. A land dispute was discussed with the local people but no decision was followed.

Discussions were held with Village Officials. Food Purchased and patrol camped.

Sunday 9th:

Patrol at YURIPAGA. The patrol departed at 0635 hours for KAMBIA via SUPI and across MARIANT swamps. Arrived KAMBIA at 1230 hours. Food purchased and patrol camped KAMBIA.

Monday 10th:

Patrol at KAMBIA. Census of MAMANDAY and KAMBIA Groups commenced at 0820 hours. Census completed at 0945 hours.

Discussions held with Officials. The patrol departed KAMBIA for KONTO at 1115 hours arriving at 1230 hours. Census commenced at 1300 hours and completed 1420 hours. Departed KONTO after discussions for LAGALAP arriving at 1540 hours. Camped and food purchased.

Tuesday 11th:

Census commenced at 0825 hours of the LAGALAP and TARABIS Group. Census completed at 1040 hours.

Diary Continued:

Discussions and complaints heard. The patrol departed for PARULE at 1145 hours and arrived KANDEP at 1425 hours. Station inspection conducted and radio contact with LAIAGAM. Departed to PARULE 10 minutes away. PARULE and HUNGARENK Groups advised of census the following day. Camped PARULE.

12th Wednesday:

Departed PARULE for HUNGARENK at 0830 hours arriving at 0845 hours. Census of HUNGARENK and NAMBURAM Groups completed at 1045 hours. Discussions held and census books attended to.

Returned to Kandep station to await arrival of further supplies of Triple Antigen. These failed to arrive. Patrol camped at KANDEP. Rations issued to carriers.

Thursday 13th:

At Kandep. Medical supplies arrived at 1110 hours. Patrol departed for KOKAS at 1215 hours arriving at 1245 hours. KOKAS Group censused at 1300 hours and completed at 1440 hours. Discussions and disputes heard. Patrol departed for PUMBUR at 1500 hours arriving at 1550 hours. Food purchased and camped.

Friday 14th:

At PUMBUR. Census conducted of PUMBUR and ROPOSE Groups and completed at 1120 hours. Census books adjusted. Survey pegs for this section of the Kandep - Laiagam road put in and discussions held on the future programme. Returned to PUMBUR 1730 hours. Food purchased and patrol camped.

Saturday 15th:

The patrol departed PUMBUR for YANUM arriving at 0950 hours. Census of YANUM Group completed at 1020 hours. The patrol conducted a land investigation into a block of land for the Roman Catholic Mission and completed at 1215 hours. The patrol departed for BAK and conducted a census of the BAK Group which was completed at 1450 hours and after discussions the patrol departed for TELYETES arriving at 1520 hours. Food purchased and camped.

Sunday 16th:

At TELYETES. Census conducted at 0810 hours of the TELYETES Group and completed at 0915 hours. Discussions held and several disputes were heard. The patrol departed for WARIBIN at 1020 hours to complete evidence in a C.N.A. case. Patrol arrived at 1155 hours. The hearing conducted at 1240 hours. Food purchased and patrol camped.

Monday 17th:

At WARIBIN. Census commenced at 0830 hours and completed at 1045 hours. Land investigation for New Guinea Lutheran Mission commenced at 1120 hours and completed 1245 hours. Several disputes heard in the C.N.A. Books adjusted during the afternoon.

Tuesday 18th:

Departed for LAMB at 0845 hours arriving at 0925 hours. Census commenced at 1020 hours. Light rain commenced to fall but census continued. Completed at 1215 hours. Heavy rain fell and census books adjusted. Several discussions were held with Village Officials. Food purchased and camped.

Wednesday 19th:

The patrol departed for KEAKAU at 0840 hours and patrol arrived 1030 hours. Camp established and census of KEAKAU groups completed at 1210 hours. Mr Murray and Mr Sewell departed for LAMB at 1350 hours. Discussions held with officials and food purchased.

Diary Continued.

Thursday 20th.

Patrol departed KEAKU at 0750 hours to PUNUKE  
and then along the vehicular road to KANDEP arriving at 1135 hours.

Patrol brought to a close.

End of Diary

Introduction :

The patrol set out from KANDEP in exceptional weather, commencing with the MARIANT river area and finally moving up the LAI river and concluding the patrol at ABANT.

Three departments in all made up the patrol. On the Native Affairs side the patrol was concerned with census revision; compiling of a census roll; land investigations and purchases and general administration within the area. The departments of Public Health and Agriculture represented by a Medical Assistant and an Agricultural Extension and Marketing Officer respectively, conducted surveys within their own fields and the results that they obtain should be most useful for future patrols and general work in the LAI/MARIANT area.

It must be noted that this is an initial patrol through the LAI/MARIANT by the department of Agriculture and also the first actual health survey to be carried out in the above mentioned census area.

In 1958/59 a medical patrol moved through the area but this would not have been effectual as the initial census had not been done and the area was still under restriction.

P.R. KANDEP

No 3 of 63-64

### Native Affairs

As was to be expected the patrol was warmly welcomed at all resthouses and ceremonial grounds. Large quantities of food were provided for disposal by the patrol. The inclusion of a Medical Assistant and an Agricultural Officer probably brought greater response than normally could have been expected from a solely Native Affairs patrol. The population within the LAI/MARIANT have continual contact with the Native Affairs Administration either along the road or at the patrol post and would therefore not have been so enthusiastic to just the normal patrol. To 90% of the population, the medical assistant was the first that they had had anything to do with in their life time. Similarly so with the Agricultural Officer.

The main trend to be seen amongst the general population is a keen demand for a cash income and any source of cash reward is readily acceptable to and demanded by them. Outwardly their ~~keenness~~ keenness and demands to work seem genuine but how deep it goes is very hard to determine. Their willing labour on roadworks is nowhere as enthusiastic as their demands for ~~more~~ the cash income they want.

Even though it was discussed at all camps, the fact that the road would better their chances a hundredfold, they were not particularly interested. Not even payment on completion of the road could enthrall them; they were not interested in the future but only the present.

The outlook is not as bad as it appears. There are a few in each group who can see and realise the futuristic view that must be taken. It is they who therefore must be used to foster some greater effort on the part of others.

The compiling of the Common Electoral Roll for the LAI/MARIANT was a major objective of this patrol. The roll is now completed for the whole of the area administered by Kandep Patrol Post.

Two of the probable candidates have already heard ~~an~~ of information from various station personnel. They have been discussing the prospects amongst themselves and have on occasions asked for information and what the proposals are. Where possible the information was supplied. They were also told that in about a month a time further information could be given to them and so not to worry too greatly at present.

Throughout the patrol, officials requested ~~whether~~ whether a Native Local Government Council was likely for the Kandep area. This was quickly refuted and explained to them. The whole reason this upsurge of requests originated from the Uner Mendi Council. Councillors have been moving through the area particularly the MARIANT river section stirring up land disputes on behalf of their populations. This and the migration of approximately 20 families from the MERUMP area of the Southern Highlands District to evade paying taxes to the Council caused this sudden questioning of councils.

The Councillors were sent back to their Council area and informed that on future visits they will first the KANDEP Patrol Post. As for the migrants they were informed that they would be recorded in the various MARIANT Groups only when they brought proof that they were not included in the Council or had permission from the Local Government Officer at MENDI. If one of these were recorded in the MARIANT it would create a precedent for others trying to escape paying of taxes. The payment of taxes being the real reason for migrating. This fact being eventually stated by the Natives themselves.

Land Disputes are numerous throughout the whole of the KANDEP area. They are all several years old and no suitable conclusion can be reached. Any discussion on the ownership of land was left alone. Where the use to ground for gardening purposes only were concerned arbitrary consent was attempted and agreeable

Native Affairs:

terms proposed. The disputants had their own choice of whether they wanted to accept the terms of the agreement.

Numerous marital disputes were brought to the patrols notice. Many were just spur of the moment efforts. The complainant seeing the patrol in the area and using the immediate advantage of not having given the ~~other~~ respondent any notice. In these cases the Village Officials were directed to hold the initial hearing and report on whether they reached a satisfactory conclusion or not.

Land and marital disputes were the only complaints made to the patrol and apart from the land disputes all the other complaints have been dealt with either by this patrol or previous patrols.

During this patrol three land investigations and two land purchases were made. These blocks were investigated for the mission representatives in this area. The blocks are to be used as schools supervised by ~~missionaries~~. The missionaries are to arrive in the area at a later date. The schools will be very helpful in the areas where they are ~~to~~ to be developed.

The Pandanus season is getting under way and already families are on their travels to the Forgeri, to the WAGE and into the ~~WAGE~~ MENDI and final areas for the greatly sought after and that the palm bears. The full season in this area commences usually ~~the~~ time in December and goes through to about the end of February. This factor may make it difficult for the Officers collecting votes from the elections next year ~~unless~~ if the active populations do not have to appear.

Generally speaking the native situation is good but a lot more is desirable from their own point of view. But they must be made to realise that they can't have ~~it~~ it just because they desire it. So in the case of cash earning they must also become responsible at the same time. The arduous duty lies in trying to make them realise the situation.



Native Affairs:

terms proposed. The Alqutants had their own choice of whether they wanted to accept the terms of the agreement.

There is marital disputes were brought to the patrols notice. Many were just spur of the moment efforts. The complaint being the patrol in the area and using the immediate advantage of not having given the other respondents any notice. In these cases the Village Officials were directed to hold the initial hearing and report on whether they reached a satisfactory conclusion or not.

Land and marital disputes were the only complaints made to the patrol and apart from the Land disputes all the other complaints have been dealt with either by this patrol or previous patrols.

During this patrol three land investigations and two land purchases were made. These blocks were investigated for the mission representatives in this area. The blocks are to be used as schools supervised by ~~missionaries~~ ~~the~~ ~~mission~~ to arrive in the area at a later date. The schools will be very helpful in the areas where they are likely to be developed.

The Pandanus season is getting under way and already families are on their travels to the Forvera, to the NAG and into the NAGI and NAGI areas for the grassy season after but that the palm bears. The fall season in this area commences usually some time in December and goes through to about the end of February. This factor may make it difficult for the Officers collecting votes from the elections next year ~~unless~~ if the Native populations do not have to appear.

Generally speaking the native situation is good but a lot more is desirable from their own point of view. But they must be made to realise that they can't have ~~any~~ it just because they desire it. So in the case of cash earning they must also become responsible at the same time. The arduous ~~task~~ lies in trying to make them realise the situation.



Census and Statistics :

This recent revision of the LAI/ KARIANG area shows an increase of 361 persons since the last record of population figures during the month of December 1961. The total for this census revision was 6,746 persons in the LAI/ KARIANG Census Division.

Attendance was excellent and only a few cases of neglect to appear were found throughout the patrol. The movement of families through their houses and their possessions is very good. They are moving through the houses with little interruption because a new crew is recommended.

The birth rate is very good. The deaths are due to the various types of pneumonia among children. The fact that there are now seven aid posts in the LAI/ KARIANG division, and have contributed to this situation.

There are a greater number of children attending the various missions school, and the government school. Although on the register there are only a few children listed at mission schools this is no indication of the number of children that appeared for census. Whereas the children from the government school were told that they were to stay at school and that their parents could inform the patrol about their work.

**MISSIONS :**

As was mentioned under the "native affairs" section of this report there are four sects in this area. They are the Lutheran, The Apostolic; the Roman Catholic and the Seven Day Adventist missions.

Except for the latter mission all have European establishments on their base stations where they undertake apart from the religious instruction side, the teaching of approximately 115 children under European supervision. The Lutheran mission also have an infant welfare sister who conducts weekly clinics at PUNU and KUNU apart from the general clinic work at the Lutheran station. The sister also conducts weekly classes at the Government station. These classes consist of maternal and hygiene instruction. So far the classes have been conducted with enthusiasm from the native people of the station and surrounding areas. Visual aids and records of childbearing have been used along with practical instructions.

All of the missions have numerous out stations which their native helpers run and through which they give religious instruction.

The effect of the missions on the native population of the LAL/ MARIATI is the same as other areas throughout the district. The natives will have any mission where a European will take charge and be fixed in their area. They assume that the European then belongs to them and they are determined in their efforts to keep him. Every group is prepared and anxious to give ground to a mission where a European will occupy it.

To gauge any other effect of missions upon the native peoples is impossible as the people have mixed and undeveloped ideas on religion and follow because they feel it is the right thing to do.

In conclusion the missions are doing a really worthwhile job from all three aspects covered namely instruction, teaching and medical attention, to the native populations.

---

Village Officials:

The MARIAT area has three Lalual's. Two of these are capable and respected leaders. Lalual POMP of TORIPAG is getting on in years and does not have much zest left, but he is capable supported by his Taltals in all his duties. These three officials along with the numerous Taltals are influential persons who are doing a good job within the MARIAT area.

On the other hand there appears to be a lack of authority in the IAI area. The two Lalual's lack initiative and following. Their Taltals in the main have very little influence and very seldom do they support the two senior officials. It is unfortunate that there is not one person who stands out as a leader in this area.

Consequently pressure has to be brought to bear on the officials to carry out their respective duties. This is not so in the case of the MARIAT where the officials can be relied upon to undertake their duties in the majority of cases.

The situation in the IAI must remain as it is. As too many changes only creates greater confusion among the native populations. The suitable solution is the emerging of an authoritative person who will combine the other officials into a harmonious unit rather than a conglomeration of small groups remaining indifferent to each other.

---

Resthouses:

The patrol camped at all the resthouses in the LAI/MARIANT Division. But as can be seen from the diary there are not resthouses for every ceremonial ground. Most of the Groups prefer to congregate at their own ceremonial ground or at resthouses nearby. In a lot of cases the distance between one area and another is no longer than 20 to 40 minutes walking time. So instead of having two resthouses on top of each other and thereby making extra work the one resthouse for two or three Groups suffices.

The resthouses are all of one design and in good condition. They are kept neat with grassed census areas and good patrol quarters close to the main house.

A. these six are all new buildings there is no need for replacements for the next three years.

The situation of one resthouse to a couple of Sub-Groups will not be the set pattern. In the future there will be a resthouse to each ceremonial ground. But as the native populations wish to wait until the road works are completed before constructing their own camps there has been no urging them to build resthouses to satisfy the needs of the Administration in the area.

### Roads and Tracks

Two road systems are under construction within this Census Division.

Firstly and most important of the two is the KANDEP to LAIAGAM road. Approximately 10 miles of this road has been completed. But much work has still to be done before it will be ready for vehicles. Several population groups have obviously not been doing their share of the work, whereas others have completed their sections and cannot see any benefit from it. Instead they have found that they have to help the less enthusiastic groups.

The appointed officials among these lethargic groups are just as lazy in most cases as the remainder of their populations. Unfortunately there is no one native who stands out as a leader with any authority to take their place, as officials.

A more concerted effort will have to occur if the road is to be completed this year. In actual fact there remains about four months solid work to complete the road with an all out effort by the groups concerned.

In July it is planned that an officer will work from the PUMBUR resthouse towards WARABIM and LAWE.

During the patrol the survey track was cut to YABUM. This section will be hastened up and will meet up with the section at YABUM. It is hoped to have this section completed before the end of August.

There have been numerous issues of equipment to the Groups concerned and further issues of crowbars and picks will be issued before the end of June. There should therefore be no excuse for any further holdups in the work. The basic hold-up was that of a few un-cooperative and ill-led Groups.

The other section is purely an internal system which will loop the MARIANT swamplands and connect the Government Station with all the Groups of the MARIANT River area.

This road is very well advanced and the end of this year should see the completion of the road. During the patrol, survey pegs were put in across about  $\frac{1}{2}$  mile of swamp. Drainage ditches on both sides of the road are being dug to drain the road section. It is expected that it will take about two months after the ditches have been completed for the road section to be dry enough to work on the surface. On completion of this the road will extend to YURIPAGA which is the furthest point in the MARIANT basin. From there the road will connect up with the one at KAMNIA and complete the loop.

It was hoped that work under an Administration Officer would be done on this road but the lagging state of affairs on the LAIAGAM road has altered that plan for the time being.

A tremendous amount of road work will have to be done before the road to LAIAGAM is a reality and the opportunities that this road will bring the Native populations can be realised.

Conclusion:

The patrol completed the Common Electoral Roll for the Kanisp area and the census for this year has been concluded. Other patrols for the first half of the 1963/64 year will be general administrative cases.

The Native situation is good and road works although progressing slowly are gradually opening up the Kanisp area to all Population Groups within it.

It was unfortunate that the patrol had to move so quickly but the end of the financial year affected all the officers of the patrol and it had to be drawn to a conclusion before the last week of the year so that other outstanding duties could be brought to a close.

The effect of the Medical Assistant and the Agricultural Officer accompanying the patrol has been mentioned under the various sections. It is to be hoped that similar Officers will be available for patrol in this area in the following year.

.....  
( D. Schupp )  
Patrol Officer.

Medical and Health:

The Medical Officer conducted a survey of general health within the LAI / MARIANT Division. During his survey the Officer saw the majority of the population.

The first of the triple antigen injections were given to the young children within the area. It is estimated from the general attendance during the patrol that 95% of the children received their injections. Those who did not were away visiting other areas and word was not sent to them in time.

Mr G. Murray's report will cover this section fully.

The attitude of the Native population to the visit of a European Medical Assistant has once again offset innumerable requests for an officer to be stationed at Kandap.

Apart from these requests the patrol by the IFA Department of Health was very successful and warmly accepted by the Native populations of this Division.

---



Agriculture :

Appendix B.

An initial survey was conducted by the Department of Agriculture in the LAI / MARIANT Division.

The Agricultural Officer inspected gardens throughout the area. Co-operation and assistance between the Native population and the Officer was excellent.

At the majority of resthouses trial plots of sugar beet; oats; turnips; tomatoes etc. were planted out. Instructions were left in the village books for the next patrol or visit to the respective resthouses to check on the growth and resistance of the trial crops. The Officer also inspected trial plots of pyrethrum on the Government Station.

The attitude towards the Agricultural Officer was very pleasing. This being an initial patrol by this Department, the native population were rather backward in bringing up their problems. Their co-operation and willingness to listen and aid the Agricultural Officer was a general indication of their appreciation of his presence within the patrol.

The body of this section is included in the Officers patrol report of the patrol.

Five members of the Landey Detachment accompanied this patrol. They were in the very capable control of Constable 5th year LOFTY. The police detachment conducted themselves admirably carrying out all duties successfully.

<u>Number</u>	<u>Rank</u>	<u>Name</u>	<u>Comments</u>
8257	Const 5th.	Lofty	A very capable Const. ble who is alert and accepts his responsibilities without difficulty. A member who is very worthy of promotion.
8778	" "	Ambania	A capable Constable -good worker under supervision.
9117	" "	Tindui	A very useful member of any patrol. An untiring worker who carried out his duties well.
9495	" "	Wati	Bather poor in appearance but a good worker and useful on patrols.
10487	Const 2nd.	Mowabi	The station bagler who gains police duty experience on patrols. He is a good worker and is improving in knowledge.

.....  
( D. Schupp )  
C.P. & H.S.C.



TERRITORY OF PAPUA AND NEW GUINEA

# PATROL REPORT

District of Western Highlands Report No. KAFDEP 4 1963/64

Patrol Conducted by L. J. Warr Cadet Patrol Officer

Area Patrolled Upper WAGE

Patrol Accompanied by Europeans Nil

Natives 7 members R.P.N.G.C. 1 Interpreter

Duration From 29 / 9 / 1963 to 14 / 2 / 1964

Number of Days 78

Did Medical Assistant Accompany No.

Last Patrol to Area by District Services 6 / 1963

Medical 5 / 1963

Map Reference Aerial photograph of Kandep area.

Objects of Patrol Completion of Laigam-Kandep Trunk Road.

Compilation of supplementary lists of Common Roll and commencement of  
LONGAP - IADUM branch road

Director of Native Affairs

PORT MORESBY.

Forwarded, please

     /      / 19

District Commissioner

Amount Paid for War Damage Compensation £

Amount Paid from D.N.E. Trust Fund £

Amount Paid from P.E.D.P. Trust Fund

67-14-20

15th Nov, 1966

District Officer,  
Western Highlands District,  
PORT MABEL

PARISH REPORT NO. 1-52/66 - JAMES

Receipt of the above-mentioned report is acknowledged with thanks.

I agree that the activities of our younger officers at times require guidance, particularly in the location of traps and the introduction of eyes-ill traps.

The covering comment from the Resident District Officer covers well the content of the report.

Continued encouragement should be given to this work, it appears, in an enthusiastic and energetic manner.

J. R. McCarthy,  
District Officer.

67. 14. 20  
(19)

22/31



Department of Native Affairs,  
Northern Highlands District,  
PORE MUREBY.

29th April, 1964.

Assistant District Officer,  
Sub-District Office,  
LALISA.

ALBERT PARRER REPORT NO. 4 - 1961/62  
UPPER LAL AND MARE

Receipt of Mr. Varr's report is acknowledged.

It is obvious from the report that he enjoyed this long spell of field work. It has obviously given him more confidence in his attitudes towards primitive people.

Despite the prolonged period of field work done in conjunction with the LALISA/LAL AND MARE road, I feel the results are disappointing. To complete the road and that that the grades are unsatisfactory indicates that proper supervision was not available. The enthusiasm of our younger officers is laudable but needs guidance. The road will be of real value for the development of agriculture and cattle in this high altitude area.

Mr. Varr has done a good job. In his next report, I would like to see more detail of his observations of the people with whom he works.

c.c.  
The Director,  
Department of Native Affairs,  
ROKOROKU.

*[Signature]*  
(S.M. FOLEY)  
District Officer.

For your information, please.

*[Signature]*  
(S.M. FOLEY)  
District Officer.



Telegrams 67 - I

Telephones

On

If calling out for

M.

Sub District Office,  
LAIASAN.

6.4.64.

The District Officer,  
District Office,  
Mount Hagen.

KANDEP PATROL REPORT No 4-63/64.

Forwarded herewith are four copies of the above numbered Patrol Report.

My instructions to the C.I.O. KANDEP, on my 67-4 dated the 2.8.64, were that Mr Varr was being transferred to him for the purpose of completing the LAIASAN-KANDEP roadway, to assist him in election education, compilation of supplementary lists for the election, the election polling, and the compilation of facts reference land disputes in the Kande Valley.

As can be seen from Mr Varr's diary he has from that date until now spent almost all his time in the field and in this time he has, for a young and relatively inexperienced Officer, he has completed a very worthwhile amount of extremely creditable work. His work on the completed motor road involved overcoming the major problem of routing the road across a completely unpopulated range rising to almost 10,000 feet, and through some 8 miles of massive rain forest, and the construction of several large bridges. In overcoming this problem Mr. Varr has produced a very creditable road. The success of the work carried out by him in election education is evident in the amazingly successful Polling Patrol which recorded nearly 6 thousand votes from a possible eight and a half thousand. A later Patrol produced a considerable Supplementary list of names but these were unable to be printed in time for the polling. However these names will be included in the amended lists in the future. Although Mr. Varr has failed to mention it in his report he carried out considerable investigation work into the several outstanding land disputes in the KANDEP Valley. The information collected by him is now on file at Sub District Headquarters and now that the election work is over it will be prepared as soon as staff and time permit for forwarding to you for further action.

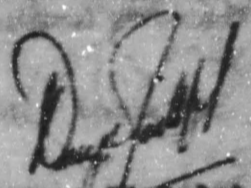
The enthusiasm which the KANDEP people showed in their desire to have a road link with the outside world is now beginning to prove itself worth their while. A survey for the possible establishment of a Low Level Council for the area is to begin this month, the first cow and calf for a pilot Native cattle scheme are leaving LAIASAN this week to be walked separately over the road to KANDEP where the Agricultural Officer LAIASAN has introduced the first pilot project. Now that he has had a vehicle made available to him on a part time basis the Agricultural Officer will be extending his expanding Native Pyrethrum scheme into the KANDEP Administrative area.

In regard to the endeavours of the agricultural Officer, can support be given to him in his claim to have a vehicle permanently allocated to him. Until a short while ago he had to use the D.S.A. Landrover as and when it was available. As the vehicle is in almost continuous use by D.S.A., Health, Education, P.W.D. and Agriculture he naturally has very little productive use of it. As the Pyrethrum scheme in this Sub District is of major importance as the only real avenue open to the people for early economic development it is essential that the Agricultural Officer be on the move all the time organizing, constructing and supervising and moving his considerable Native Staff. He is also introducing Native cattle schemes, but without a vehicle progress is pitifully slow. The vehicle which he has on hire now has made considerable improvement to his weekly coverage of the scheme. The Native people have by hand built 90 miles of road for the sole purpose of making their development easier, and the KHAMU people are a major proportion of the population and very eager for agricultural development. It is a pity that their rate of progress is slowed simply because a permanently allocated vehicle is not made available for this most important phase of the people's development. Your advice on this matter would be appreciated.

A motor and trailer from KALAGA have been loaned to KHAMU for road surfacing purposes.

It is felt Mr. Warr has in all the field-work carried out by him during this patrol achieved results which will in the near future prove of great benefit to the people amongst whom he has worked.

For your consideration and further action please.



Assistant District Officer

(K)

KANDUP Patrol Post,  
Western Highlands District,  
26th. March 1954.

The Assistant District Officer,  
Legally Sub District,  
LALAMU.

PATROL ORDER No. 4 1953/54

AREA PATROLLED UPPER LAI and WACH.

PERSONNEL AVAILABLE 7 members of the R.P.M.R.C.  
1 Interpreter.

PERIOD OF PATROL Periods from 22/3/54 to 10/4/54  
Actual patrolling days 78.

LAST PATROL IN AREA June 1953.

MAP REFERENCES Aerial photographs.

- OBJECTS OF PATROL
1. To complete the sandy side of the KANDUP - LALAMU TRUNK ROAD.
  2. To compile supplementary lists of the Common Roll for the UPPER LAI and WACH, and disperse educational propaganda for House of Assembly Elections.
  3. To survey and commence to LALAMU - LONGUP Branch Road.

*[Signature]*  
Lloyd Wray  
Cadet Patrol Officer.



INFORMATION

The Upper Lai consists of the upper northern reaches of the flat swampy Lai River Valley bounded on the eastern side by areas of undulating humal grassland merging into the heavily timbered slopes of the LAIASAN-KANDEP Divide, rising to 9,500 ft. above sea level.

The indigenous people are typical HMOA in language and custom and they have close land and cultural ties with the Hmoa people of the LAIASAN area.

The rest houses in the Upper Lai are KIANG, PATENK, IANUM, LAWE, PARASEM and HEM.

The Wage Valley and the timbered headwaters run in a north south direction parallel to the Lai Valley. It has steep sides covered with humal grass on the lower slopes down to the river and heavily timbered peaks. The western peaks form the ANSABARE-WAGE Divide. The western side of the Wage Valley forms the boundary between the Kande and Fari Administrative areas.

The indigenous people of this area speak the HURI language of the Fari area and have close cultural ties with the Fari people.

Rest houses and census centres of the area are WAPI, KANTAK, HURIPREA, KANYAN, ANIAGA, KINULI, LIGLU, SANDGANA, IMPIANA, TASHAKA, KANGLAN, YUMSIS, LONGAP, TAININUIS and POKAJALL.

The objects of the patrol were firstly to complete the KANDEP side of the LAIASAN - KANDEP Trunk Road. Secondly to check and compile supplementary lists of the Common Roll for these areas listed above also to disperse educational propaganda for the House of Assembly elections. Thirdly to survey and start the LAIASAN - LAWE Road.

DIARY

Monday 18th September 61.

1200 Departed Kande Station for IANUM. No IANUM per motorcycle, walked to LAWE arrived 1700.

Monday 19th Sept.

0900 Workers from WAGE arrived, instructed to build sleeping quarters. 1200 Village Officials from all areas in the Kande Administrative area arrived LAWE to discuss roadwork. It was decided that the people from the MARIANT and LONG LAI to work from IANUM towards LAWE. WAGE to work from LAWE towards IANUM. Workers from UPPER LAI to complete LAWE to range.

Tuesday 20th Sept.

0800 Surveyed section of road adjacent to LAWE rest house. 1100 walked to IANUM and inspected one of possible routes. Decided to follow the Kallak River. 1600 Purchased native food.

Wednesday 21st Sept.

0800 Inspected roadwork commenced by MARIANT men. 0900 Departed IANUM for LAWE met G.I.C. B. Allen, returned to IANUM then then to KANDEP for meeting with all missions in Kande area.

Sunday 6th. Oct. 43  
1430 To IANUM per motorcycle.

Monday 7th. Oct.  
0800-1600 Surveyed section of road from IANUM. 1600-1700 Purchased native foods.

Tuesday 8th. Oct.  
0830 Departed IANUM for LAUNE, inspected and supervised roadwork on route. 1430 Inspected roadwork from LAUNE towards range.

Wednesday 9th. Oct.  
0730 Departed LAUNE and walked to IANUM. Mr. L. Allan, C.I.C. Kandap arrived by motorcycle to discuss road progress. 1700 Purchased native foods.

Thursday 10th. Oct.  
0700 Surveyed further section of road towards LAUNE until 1800.

Friday 11th. Oct.  
0700 supervised roadwork. 0900-1115 Departed IANUM and walked to Kande.

Sunday 13th. Oct.  
1430 To IANUM per motorcycle.

Monday 14th. Oct.  
0800 Surveyed further section of road 1700 Purchased native foods.

Tuesday 15th. Oct.  
0800 Departed IANUM and walked to LAUNE, arrived 1000 Surveyed section of road and purchased native foods.

Wednesday 16th. Oct.  
0800 Inspected roadwork in progress from LAUNE towards range marked out section. Arrived LAUNE 1830.

Thursday 17th. Oct.  
0730 Inspected all roadwork in LAUNE area and discussed progress with Village officials. 1500 Purchased native foods.

Friday 18th. Oct.  
0800 Departed LAUNE and walked to IANUM thence to Kandap per motorcycle.

Sunday 20th. Oct.  
1200 To IANUM.

Monday 21st. Oct.  
0800-1600 supervised roadwork and pegged out small section. Also purchased native foods for roadworkers. 1600 To Kande station for discussions with C.I.C. re road progress. C.I.C. had just returned from patrol.

Tuesday 22nd. Oct.  
0800 to IANUM, arrived 0900. Walked to LAUNE along proposed route. Purchased native foods.

Wednesday 23rd. Oct.  
Departed LAUNE 0700 and walked to C.I.C. Ryda camp on Laigau side of range to discuss the routing of road across range.

Thursday 24th. Oct.  
Remained at camp as we had been advised that A.D.O. Iniaqua and District Officer intended to visit roadwork. They arrived 1700.

Friday 25th. 1951

0830 Departed camp with Mr. Reid for Kandeap Station. Inspected roadwork completed during absence. Arrived Kandeap 1700.

Saturday 26th. 1951

Departed Kandeap 0600 arrived range camp Laigaga 1200. Then to Laigaga Station for talks with the A.S.C. re road progress Kandeap side.

Sunday 27th. 1951

Wailed from Laigaga to range camp, arrived 1700.

Monday 28th. 1951

0800 walked to LAWE and then to where the HARIANT and WASH workers had completed the LAWE-LAWE section. Held talks with assembled people re further roadwork.

Tuesday 29th. 1951

0800 departed LAWE and walked to LAWE to discuss roadwork with the Upper Lai village officials. 1900 purchased native foods.

Wednesday 30th. 1951

0800 shifted camp from LAWE to range, close to roadwork.

Friday 1st. 1952

0800 departed with camp and walked to Kandeap Station. Arrived. 1500.

Sunday 3rd. 1952

1130 to camp on motorcycle.

Monday 4th. 1952

0800-1200 Completed survey of road to link with Laigaga side.

Tuesday 5th. 1952

0800-1700 supervised roadwork.

Wednesday 6th. 1952

0800 to Laigaga area to purchase native food for roadworkers. 1400 assembled all roadworkers for discussions on House of Assembly Elections.

Thursday 7th. 1952

0800-1700 supervised roadwork.

Friday 8th. 1952

0800-1200 supervised roadwork then to Kandeap Station. O.I.C. on patrol.

Saturday 9th. 1952

1200 to camp.

Sunday 10th. 1952

at camp.

Monday 11th. 1952

0800 supervised roadwork 100 to Kandeap Station to org. also purchase native food for roadworkers.

Tuesday 12th. 1952

1000 arrived range camp and inspected roadwork. Held discussions with village officials.

Friday 15th. 1952

0800 supervised roadwork.

Saturday 16th. 1952

0800 initial cutting of road completed. 1200 to Kandeap.

Monday 17th. Nov.  
To camp.

Tuesday 18th. Nov.  
0800-1700 Cutting logs for bridges and culverts.

Wednesday 19th. Nov.  
As per yesterday. C.I.C. arrived to inspect progress.

Thursday 20th. Nov.  
0800-1700 Supervised culvert and bridge construction.

Friday 21st. Nov.  
As per yesterday.

Saturday 22nd. Nov.  
0800 Walked from LAWE to IANIN then started surveying proposed route for IANIN to LORCAP.

Sunday 23rd. Nov.  
1000 All people assembled for discussions re House of Assembly Elections.

Monday 24th. Nov.  
Walked to Kande Station.

Day excursions for bridge construction.

Tuesday 25th. Nov.  
0800 to LAWE re road inspection along LAWE.

Wednesday 26th. Nov.  
0800 Road inspection repaired three falls. Then to Kande.

Thursday 27th. Nov.  
0800 to LAWE by motorcycle to supervise bridge construction.

Friday 28th. Nov.  
0900 Picked up at MUNN and to LAWE on road inspection.

Saturday 29th. Nov.  
At LAWE.

Sunday 30th. Nov.  
0800-1900 Supervised gravelling at MUNN.

Readwork done for Christmas period. Half on numerous day excursions re House of Assembly election propaganda. Also purchased two pieces of land and dealt with relevant documents.

Monday 1st. Dec.  
To LAWE on road inspection. Camped IANIN.

Tuesday 2nd. Dec.  
To LAWE and set up camp.

Wednesday 3rd. Dec.  
Started survey of diversion.

Thursday 4th. Dec.  
0800-1700 as per yesterday.

Friday 5th. Dec.  
0800-1700 Completed survey of diversion and held discussions with local people.

Saturday 6th. Dec.  
To Kande Station to deal with correspondence.

Friday 10th Jan.

To LAMU. Clearing of bush on diversion commenced. Self and police to Sandap.

Sunday 12th Jan.

PM. To LAMU per motorcycle.

Monday 13th Jan.

0800 Detailed work to police. Held discussions with village officials re road work. Inspected work on clearing of bush.

Tuesday 14th Jan.

0800 Supervised clearing of diversion 1000 To LAMU for payment of bridge footing used on the Koli's bridge. 1200-1700 Supervised further clearing of the diversion.

Wednesday 15th Jan.

Inspected further clearing.

Thursday 16th Jan.

0800-1800 Completed final survey of diversion.

Friday 17th Jan.

0800-1100 Supervised further clearing. 1100 To Laigam for discussions with A.S.O. re roadwork. A.S.O. in Hagen.

Saturday 18th Jan.

0800-1800 Transfer to Sandap.

Sunday 19th Jan.

0800-1200 Prepared to depart into the Wags. 1745-1745 Walked to WAI after heavy rain.

Monday 21st Jan. 0800-1700

Talked with assembled people re House of Assembly elections and made supplementary lists of the Common Roll for WAI, KAWAK, KAWAK, and KUMUPAGA.

Tuesday 22nd Jan.

0730-0930 Departed WAI and walked to KINWILI. 1030-1500 Discussions with people re elections. Supplementary lists of Common Roll for KINWILI. 1500 Purchased native foods.

Thursday 23rd Jan.

0730-0930 Departed KINWILI and walked to ARIANA. 0930-1300 Discussions with people re elections. Supplementary lists made up for ARIANA. 1300-1445 Walked from ARIANA to PANDUANA. 1445-1800 Talks with assembled people re elections. Supplementary lists of Common Roll compiled for LIULIU. 1800 Purchased native foods.

Friday 24th Jan.

0800-1400 Supplementary lists compiled for PANDUANA. 1430-1630 Departed PANDUANA and walked to IMAYANA.

Saturday 25th Jan.

0730-1400 Held discussions with assembled people re House of Assembly elections. Supplementary lists of Common Roll for IMAYANA compiled. Several minor civil disputes brought before the patrol. Village officials ordered to settle. Purchased native foods.

Sunday 26th Jan.

0730-1100 Walked to TANUANA. All people had assembled so held discussions re elections. 1100 Supplementary lists compiled of Common Roll for TANUANA. (C) Purchased native foods.

Monday 27th Jan.

0830-0930 Walked to KAREKARE, 1000-1600 Election propaganda and supplementary lists of the Common Roll compiled for YIMBIL and KAREKARE. Purchased native foods. Heavy rain.

Tuesday 28th Jan.

0730-1200 Walked to LONGAP, 1200-1400 waited for patrol equipment to arrive. 1430 Heavy rain unable to see people.

Wednesday 29th Jan.

0800-1700 Talked with assembled people re elections and compiled supplementary lists of the Common Roll for LONGAP, FAIRINGS, PORMALL and ANGORALL. 1500-1800 Walked to LAUN.

Thursday 30th Jan.

0800-1700 Inspected and supervised work completed on diversion during absence. Purchased native foods.

Friday 31st Jan.

0800-1300 Missed House of Assembly elections with people. Compiled supplementary lists for LAUN, KARABIN and KORN. 1300 Walked to IANON.

Saturday 1st Feb.

0800-1700 Held talks with assembled people re elections. Compiled supplementary lists of the Common Roll for IANON, TITIKO, KIANAS and KANAK. 1100 Started walking to Kandep Station, set at KANAK by S.I.C. in land Rover

Sunday 2nd Feb.

0800 Reported Kandep, arrived LAUN 0930. Inspected work in progress on diversion.

Monday 3rd Feb.

0800-1730 Worked on tractor.

Tuesday 4th Feb.

0800 Supervised work on the diversion. 1200 To Kandep for meeting with all missions in Kandep area.

Wednesday 5th Feb.

To LAUN and supervised roadwork.

Thursday 6th Feb.

0800 Walked to TITIKO to inspect start of LAUN-LONGAP Road.

Friday 7th Feb.

Walked to LONGAP to inspect road started from LONGAP.

Saturday 8th Feb.

0800 Surveyed road to cross swamp to TITIKO and worked in system of drains. 1900-1830 Walked to LAUN.

Sunday 9th Feb.

To Kandep Station to prepare for the House of Assembly elections.

END OF PATROL

NATIVE AFFAIRS.

ARMED AND DANGEROUS TO THOSE

The patrols received very well in all areas visited. More than adequate supplies of locally grown food were made available to the patrol and there was no difficulty encountered in obtaining carriers to move the patrol equipment from rest house to rest house.

Although the patrol only visited the Upper Lai and Waga areas it came in contact with natives from all the areas under administration from Sanday Patrol Post. During the initial "push" to cut the long remaining section of the LAIAGAN - KANDEP Trunk Road, IANON to Top of the Sanday - Laiagan Divide, a distance of approximately fifteen miles, the patrol had as many as 1500 willing and enthusiastic volunteer roadworkers.

The enthusiastic way the workers set about to complete the trunk road and later the people of the WAGE attacked the IANON - LOWCAP section shows that it is realized by the people, the importance of a good road outlet and internal network.

It was pleasing to see how the three diverse groups of people in the Sanday area, the bark belted Waga and Wandi speakers of the MARIANI and LOWSE LAI area, the typical Waga people of the UPPER LAI and the Muri speakers of the WAGE, work together on a uncompetitive friendly competitive basis to complete the road link with Laiagan. The people of the UPPER LAI in whose area the road was built supplied more than abundant supplies of native food which was purchased and supplied to the roadworkers.

Throughout the patrol, during roadwork and latter while preparing supplementary lists of the Common Roll numerous discussions were held with the people regarding the House of Assembly elections.

At first the people of the area seemed convinced that the elections meant the introduction of a Local Government Council and said that they had no cash income what so ever to be able to pay the inevitable taxation. When it was explained to them that the elections were to choose a representative from their electorate to attend the House of Assembly, and the workings of the House they became quite interested and asked some very relevant questions.

The absence of criminal offences among the native people is very noticeable. Only a small number of civil offences were brought before the patrol. Here possible the village officials were encouraged to settle these amicably. Those not settled and requiring court action were sent to Sanday Patrol Post for hearing by the Officer in Charge, Mr. H. Allen.

VILLAGE OFFICIALS.

The majority of the village officials are doing a satisfactory job and there is no need at this stage for any recommendations for further appointments.

The officials of the area are listed below.

UPPER LAI.

- Laitul MUYAN of NIARAN.
- KIKTaitul SOLIS of NIARAN.
- Taitul LANS of TUPHANS.
- Taitul MANGAP of MANGASIN.
- Taitul KIMIRI of MUKU.
- Taitul OSE of LAGNE

SAGE CENSUS DIVISION.

Tulal MORN of KANYAL.  
Tulal KURALI of KANIAN.  
Tulal THORN of WAPI.  
Tulal PIP of KUMSIPAGA.  
Tulal APIN of KANYAN.  
Tulal SAIPA of KINOHU.  
Tulal IUI of KINOHU.  
Tulal ANA of KINOHU.  
Tulal TOMA of ANIARA.  
Tulal LISPA of PANDIARA.  
Tulal KOKOR of PANDIARA.  
Tulal LISPA of INAPIARA.  
Tulal MORN of INAPIARA.  
Tulal HARAB of INAPIARA.  
Tulal KINA of TASHARA.  
Tulal LISPA of KANSHARA.  
Tulal ISHOGON of KANSHARA.  
Tulal PASHA of LONCAP.  
Tulal KASHA of LONCAP.  
Tulal MASHA of LONCAP.  
Tulal MASHA of TAININOH.  
Tulal KASHA of PORAGALI.  
Tulal BASHA of AMORALI.

ROADS and BRIDGES.

LAUNE - LAIAGAN TRUNK ROAD.

At the commencement of the patrol approximately eight miles on the Kander side had been completed although was not in perfect condition as at no section had the road been cut down to a good clay base. This section was from Kander Station to LAUNE.

After walking over the area several times it was decided to follow the KOLIAN river from LAUNE to LAUNE, instead of the proposed route, alleviate several steep rises and falls. Then from LAUNE to climb and follow a ridge to the top of the range.

A small section of road one and a half miles had been completed from LAUNE towards the range but the grade was far too steep and needed to be changed. However it was decided for the purpose of opening the road as soon as possible, per instructions, to utilize this section and then divert it at a later date.

As stated previously there were 1500 willing roadworkers to help complete the project. Workers from the MASHA and LOWER LAI areas started from LAUNE towards LAUNE, workers from the MASHA worked from LAUNE towards LAUNE, and the locals from the UPPER LAI worked towards the range from LAUNE.

The major proportion of the route was very heavily timbered and matted with dense undergrowth and had to be cleared before any cutting could be attempted, but the enthusiastic workers cut the fifteen miles in approximately eight weeks of actual working time in the initial push.

Four bridges and numerous culverts were built on completion of the actual cutting.

As the object of the patrol was to open the trunk road as quickly as possible, consequently the quality of road suffered



The diversion at IANUM to eliminate the steep grade mentioned previously has been surveyed and cleared and it is expected to be completed in two months, as only the local UPPER LAI people are working on this particular project.

Shaping and graveling has commenced on the entire length of the Kanep side and should be completed and in perfect order by October 1960.

#### LONGAP-IANUM BRANCH ROAD.

The IANUM to LONGAP Branch road when completed will give road access into the WAGE area which through lack of staff and poor accessibility, has long been neglected.

The proposed route runs north from IANUM along the eastern side of the LAI VALLEY to TIBENSI then turns the west to cross the very swampy valley, approximately one and a half miles, it then turns south to the Longap Valley climbing gradually to LONGAP road house.

The entire WAGE population is very enthusiastic and when the ~~road~~ section is completed want to extend the road into the Wage Valley itself. It is expected if staff is available to extend the road to link all the post houses and link with the road being built into the southern end from the station. This road extends to KANTAK and is now pushing towards MASTAN and KIBULLI.

People from the INAPIANA, TAPUNAKA, KAREHANE, FIDNES and LONGAP are at present working from LONGAP towards the swamp, and those from TIBENSI, TAINIBONS and SIK are working from TIBENSI towards IANUM.

It is expected that this branch road should will be near completion in two months.

#### MISSIONS.

The Apostolic Church Mission and Lutheran Mission, which are both based at LONGAP and are staffed by European pastors, would the most influence in the area.

The A.M.S. has numerous outstations extending into the Wage Valley, where as the Lutheran Missions concentrates more in the Upper Lai.

These two missions mainly restrict their activities to religious teachings, although the wife of the pastor of the Apostolic Mission runs a school in the lower primary standards.

Other missions in the area are the Seventh Adventists, Catholic, and Methodist, which is constructing an airstrip at KAREHANE. These are all staffed by indigenes and would certain influence although not as strong as the five previously mentioned.

#### CONCLUSION.

All objects of the patrol were completed satisfactorily. The LAIAGAN-KANDEP Trunk Road was completed although still requires a great deal of work shaping and graveling.

The LAM [unclear] has been removed and the enthusiastic  
WALL workers should, as stated before, finish this project in  
the near future. It is hoped that staff will be available  
around the road into the [unclear] valley as per their wishes.

Supplementary lists of the Common Hall were compiled for  
all road houses in the WALL and UPPER LAM. These were submitted  
although it was found they were too late for printing.

As shown by their past efforts the people of the [unclear]  
area are open for development and this is a good sign for  
the economic advancement in the future.

[unclear]  
[unclear]  
[unclear]

ulat

(2)

AGRICULTURE

The staple food of the people, as in all other areas of the territory, is sweet potato. Small quantities of European potatoes and other European vegetables such as cabbage and corn, are also grown as a supplement. The main crop is grown in the area although the area is suitable for potatoes and cattle. The average height of the area is 7,500 ft. above sea level, and large areas of suitable land is available.

A cattle scheme has been started and is now in operation at Kibungo close to the border station.

There have been very few visits into the area by officers of the Department of Agriculture and the Agricultural Officer stationed at Kibungo is responsible for looking after the area. The Officer, and through him all other officers, are particularly well informed.

The next request of the people to the Government was for an Agricultural Officer to be stationed at Kibungo.

The people would enthusiastically support any project started by that officer aimed at their economic advancement, as was shown by their willingness to complete the roadwork in the area.

The people are very keen to see the roadwork completed and are willing to do their part.

The people are very keen to see the roadwork completed and are willing to do their part.

The people are very keen to see the roadwork completed and are willing to do their part.

The people are very keen to see the roadwork completed and are willing to do their part.

The general health of the people in the UPPER LAI and WAGE seems very good, although pneumonia prevalent amongst the very small children.

The two areas are serviced by several aid posts. These are situated at,

**KINDILI** A.P. PERAGI. The Aid Post is in a very good condition due to the efforts of the Aid post orderly.

**KHILIN** A.P.O. YIRDI. The station is very clean and well set out and planted with various flowers.

**BEAKIATA** A.P.O. LAI. The ward needs replacement. The people were told that they wished to keep the Aid post they were keep constant maintenance of the buildings.

**KAREKARE** A.P.O. HANUPU. The aid post in very clean order.

**KUMAR** A.P.O. PALLAK. Very clean.

**KUMU** A.P.O. KENO. The post was very well set out and **KUMU** A.P.O. is doing a very good job.

**KAMU** A.P.O. YORF. This post has been shifted from **KLAKHO** or **LADUN** where it is adjacent to the Ladaga-Kandep track road.

A complete census patrol of the Kandep will be carried out and it is hoped that the European medical assistant, Mr. Crawford, who has just arrived at Kandep will accompany the patrol.

ulat

2

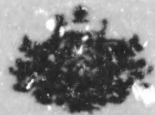
APPENDIX G

REPORT ON MEMBERS OF THE ROYAL CAVALRY AND NEW GUINEA CONSTABULARY  
ACCOMPANYING THE PATROL.

Several constables accompanied the patrol, all for varying periods.

<u>No. No.</u>	<u>Name</u>	<u>Comments</u>
8297	LOFTY	Acted as N.C.O. for the patrol. Very efficient. Deserves promotion.
9062	ASA	A reliable worker.
8464	WANARI	A conscientious worker.
9640	SAKUMAI	A quiet but efficient worker.
1095	KOE	Not impressive.
10667	PAKIRI	Young but has the attributes to become a good policeman.
10487	MOUARI	Bugler. Worked well.

.....  
Lloyd Warr.  
Cadet Patrol Officer.



TERRITORY OF PAPUA AND NEW GUINEA

# PATROL REPORT

District of Western Highlands ..... Report No. <sup>1/AUDEP</sup> C of 1963/64.....

Patrol Conducted by Lloyd Warr ..... Cadet Patrol Officer.....

Area Patrolled Lai-Mariant Census Division.....

Patrol Accompanied by Europeans ..... Nil.....

Natives ..... 1 Interpreter and 1 member of the R.P.M.G.C.

Duration—From 17./3./1964 to 13./5./1964.....

..... • Number of Days 36 .....

Did Medical Assistant Accompany ..... No.....

Last Patrol to Area by—District Services Feb./Mar./1964.....

Medical ..... June /1964.....

Map Reference Aerial photographs.....

Objects of Patrol 1. Revision of census. 2. Routine administration. 3. Inspection of all roadwork in progress in the Lai-Mariant area.

Director of Native Affairs,  
PORT MORESBY.

Forwarded please

..... /19 ..... District Commissioner

Amount Paid for War Damage Compensation ..... £.....

Amount Paid from D.N.E. Trust Fund ..... £.....

Amount Paid from P.E.D.P. Trust Fund ..... £.....

57-14-30

Department of Native Affairs,  
MILNEBURN, PAPUA.

7th September, 1964.

District Officer,  
Western Highlands District,  
MR. HARRIS.

PATROL REPORT NO. 6-1261/64 - LANDER

Receipt of the above report and accompanying  
comment is acknowledged with thanks.

2. I agree in your remarks relating to proper survey  
prior to commencing work on new tracks.
3. Please arrange for the Assistant District Officer  
to visit this area in the near future and record any  
practicable proposals for the general development of  
area.
4. Mr. Harr has completed a very good patrol, well  
recorded.

  
(J.K. McCarthy)  
ASSISTANT

ula

SMF:JW

67-14-30

WRDA76



Department of Native Affairs,  
Western Highlands District,  
MOUNT HAGEN.

10th August, 1964.

Assistant District Officer,  
Sub-District Office,  
LALASAM.

KANDEP PATROL REPORT No. 6. 1963/64

Receipt of Mr. Warr's Report is acknowledged. Please accept my apologies for the delay in replying for the Report has been some time in transit, but until recently, was not seen by me.

Extracts of the Report have been circularized to Departmental heads and District Agricultural Officers has made this comment.

Quote:

"It would be unwise to set up intensive or semi intensive piggeries. The past system is open range, that is, grazing over a wide area as with the native owned pigs."

I will discuss this with Mr. Allan and suggest that it be a topic for the next meeting of the Economic Development Committee.

I have commented previously on the waste and time and labour caused by bad initial road survey. It is disappointing when the initial work done by the people has to be abandoned and the same group asked to get a parallel section of road. I have no criticism of the present officers. Neither of them were at fault in this regard but I do insist that further road work, particularly in the MUMIKANA/USMADIA area, be preceded by an adequate road survey and by proper European supervision during construction.

Economic Development for Kandep should be encouraged for the sooner the people get cash return for their efforts the better. In this regard, Mr. E. McCarthy should prove a useful officer on your staff. Action has been taken to provide funds for the construction of a modest dwelling for the Agricultural Officer.

Please advise me if you want some prints of the map. They may prove difficult because of the size of sheet involved.

*S. H. Foley*  
(S. H. FOLEY)  
District Officer



ula

MICRAPH

67-1

Sub-District Office,  
LALABAN.

28th May, 1964.

The District Officer,  
Western Highlands District,  
HOUST HAGEN.

KANDEP PATROL REPORT NO. 6 - 1963/64.

Forwarded herewith are three copies of the above report, of a patrol carried out by Mr. S.P.O. Warr in the Lai-Mariant Census Division. The patrol was carried out to revise census, to inspect roadwork and to carry out routine Administration.

It is obvious from the report that Mr. Warr thoroughly carried out the necessary duties and it is, as he says an extremely favourable situation in the area as far as Native political, social and economic welfare is concerned. One never fails to be impressed by the lack of criminal offences in the Kandep Administrative area. The enthusiasm of the Kandep people for road construction into their various clan areas is amazing, and the work which they have put into the construction of these roads and later into their maintenance is extremely creditable.

Mr. Warr's remarks under Agriculture are of interest. They show that the Natives have a very healthy desire to move into a cash Agricultural programme of cropping and animal husbandry, and the liaison between the Officers of the Department of Agriculture and of our own Department are producing good results. Mr Warr's attached map shows where Native owned cattle and pig schemes have been, and are to be established. Pyrethrum planting is to begin next week throughout the entire Lai-Mariant valleys.

With regard to the last paragraph of Mr Warr's remarks under the above heading the Senior Agricultural Officer at Laigam has informed me that he will, within the next week be transferring Mr. B. Brett from Laigam to Kandep to supervise Agricultural development in the area. As this will be a more or less permanent arrangement it would be appreciated if the District Commissioner could be approached for sufficient funds to cover the construction of a good Native material residence for the Agricultural Officer on the Kandep Station. The District Agriculture Officer has already advised me that he has allocated a pre-fabbed metal warehouse and office to Kandep for erection by the Agriculture Officer. The O.I.C. Kandep will be requested to allocate a suitably large area of ground on his Station for the establishment of the buildings and to permit experimental cropping to be carried out.

For your further action and advice please.

  
ASSISTANT DISTRICT OFFICER.

ul

MOB  
F

LAGOS Patrol Post,  
Western Highlands District,  
13th. May 1964.

The Assistant District Officer,  
Lagidi Sub District,  
LAGOS.

LAGOS PATROL REPORT NO. 6 JUNE 64.

AREA PATROLLED Lal-Bariant Census Division.

PATROL ASSISTANTS 1 member of the R.F.A. S.G.C.  
1 Interpreter.

PERIOD OF PATROL Periods from 17/5/64 to 13/6/64.  
Actual days on patrol. 38

DATE OF PATROL Election Patrol Feb.-Mar. 1964.

TYPE OF PATROL Serial photographs.

- OBJECTS OF PATROL
1. Revision of census.
  2. Routine administration.
  3. Inspection of all roadwork in progress in the Lal-Bariant area.

.....  
Lloyd Warr  
Cadet Patrol Officer.

ula

LAIKAP PATROL REPORT No. 6 1967/68

THE LAI-BARIANT CROSS DIVISION.

INTRODUCTION.

The Lai-Bariant Census Division consists of two large flat swampy, usual grass covered, river valleys, the Lai and Bariant, which form an "L" shape.

The Lai Valley runs in a north south direction, bounded on the west by the timbered slopes of the Lai-Waga Divide, on the east by a high heavily timbered and unpopulated plateau. The Laiages-Laiagey Divide, which rises above 10,000 feet, forms the northern boundary and also shelters the headwaters of the Lai river.

The Bariant Valley, which is larger than the Lai, runs in a west east direction bounded in the north by the same high plateau which forms the eastern boundary of the Lai Valley, and the Kadey-Bandi Divide forms the southern wall of the valley.

The Lai and Bariant rivers join a short distance south of the Kadey station and then flow on into the Southern Highlands.

The indigenous people of the Lai Valley are typical, rope belted, BSA speakers as in the Laiages Wabag areas. The people of the Bariant Valley are also BSA but unlike those of the Lai, they wear a bark belt from the Wagon and Sandi areas. The people of the western wall of the Bariant are bilingual speaking both BSA and NENI.

Post houses and census centres in the area are PAKUN, KASABUN, KANUK, M. KOKAS, POKHE, KOPHE, YANK, KAK, KAKA, TIKUN, WAKANIN, WUP, and LAWE in the Lai Valley and PINDAK, KASU, KONGKUS, KALI, ARANAU, KALIKALI, KIS, SOVI, LAWA, TUKIPUA, TUNDE, KOSKUN, WER, KAKIA, KAKASAI, KOSTO, ANUKARA, YAKASIS and LISALAP in the Bariant Valley.

The objects of the patrol were firstly census revision, routine administration and finally to inspect all roadwork in the Lai-Bariant area.

BLANK

Tuesday 17th. 1968.

0800 Departed station arrived LAIKAP 0900. Inspected roadwork in progress by LAIKAP and TIKUN people. Walked to KONGAP to discuss roadwork with Lutheran and Apostolic missionaries arrived 1300. Departed KONGAP and proceeded LAIKAP, arrived 1800.

Wednesday 18th.

0800 Inspected roadwork on LAWE diversion. 1000 departed LAWE per motorcycle and arrived LAIKAP 1045. Instructed people re graveling. Arrived back LAWE 1730.

Thursday 19th.

0730 Departed LAWE, arrived LAIKAP 0815. Final survey of KONGAP-LAIKAP road. Back at LAWE 1800.

MILEAGE

Friday 20th. 1954.

Inspected roadwork LAUVA.1200 To Kasep station.

Saturday 21st.

1200 To LAUVA per motorcycle.

Sunday 22nd.

0800-1000 Purchased planks at LAUVA.1000-1700 Supervised roadwork.

Monday 23rd.

0800-1200 To IANAK, IYUNAS and IONGAT to inspect roadwork.

Tuesday 24th.

0800-1700 Supervised roadwork LAUVA.1200 To Kasep station per motorcycle.

Wednesday 25th. April.

1200-1300 walked to LAUVA.1500-1700 Inspected roadwork.

Thursday 26th.

0800 purchased active loads and inspected roadwork.

Friday 27th.

As per yesterday.

Saturday 28th.

0800-7.30. Inspected roadwork LAUVA and IANAK.

Sunday 29th.

At LAUVA.

Monday 30th.

Inspected roadwork.1200 walked to IANAK to supervise bridge repair.

Tuesday 1st.

Inspected work on LAUVA branch road, then walked back to LAUVA.

Wednesday 2nd.

0800-1200 walked to Iatagan for talks with the A.D.O.

Thursday 3rd.

Walked to IANAK. Inspected roadwork completed during weekend.

Friday 4th.

Walked to IONGAT via IANAK and IYUNAS and inspected roadwork on route.

Saturday 5th.

0800-1000 discussions with village officials.1000 walked to Kasep Patrol Post.

Sunday 6th.

Walked to KIRIARANG to check the KIRIARANG, LAUVA and PAKULI lines.

Monday 7th.

08.0 Walked to KUKAR and crossed KUKAR line back to station, arrived 15.0.

Tuesday 8th.

08.00 Walked to IYUNAS.1000-1500 crossed ARANAY, IYUNAS, IYUNAS and IYUNAS groups.1500 Walked to KALINAKA.

ulu

MPRAH  
P

Tuesday 25th. April.

0800 Censused KALIKAMA and GIN groups, talked with assembled people re roadwork and proposed agricultural developments. 1200 Walked to Gwi. Village officials advised to settle marriage dispute. Attended to census statistics.

Wednesday 26th.

0800 Censused SIFI and KARI groups and talked with assembled people re various matters including roads and agricultural development. 1000 Departed SIFI and walked to YURIPASA. Stopped at TIANIPASA and talked with Mr. Seald, the Lutheran missionary. Arrived at YURIPASA 1400. Attended to census statistics.

Thursday 27th. April.

0800-1200 Talked with assembled people re roadwork and agricultural development planned for the area. Censused YURIPASA, INBRI, and WENKIN groups. 1200 Walked to VEH 1400 Talked with assembled people and census the one VEH group. P.M. Census statistics.

Friday 28th. May.

0800 Departed VEH and walked to KINBIA, arrived 1000. 1200 Censused KASHIA and MANABAI groups and talked with assembled people. Purchased native foods for carrier line.

Saturday 29th.

0730 Departed KINBIA and walked to KUNTO, arrived 0900. Talked with assembled people and census the two groups KUNTO and KUNBIA. 1100 Departed KUNTO and walked to LAKLAK, arrived 1145. 1200-1500 Talked with assembled people and census the three groups LAKLAK 1 and 2 and TANKIS. 1500 Walked to Kodes Patrol Post.

Sunday 30th.

On station.

Monday 1st.

On sta 1st attending to census statistics.

Tuesday 2nd.

0900-1200 Departed Kodes station and walked to FUMBER. 1100-P.M. Census statistics.

Wednesday 3rd.

0300-1100 Census statistics. 1100-1500 Censused the two PAKIN groups and the three KOFKIS groups. 1500-P.M. Census statistics.

Thursday 4th.

0800-P.M. Caught up with unfinished census statistics.

Friday 5th.

0800-0930 Departed FUMBER and walked to LAKIN. 1100-1400 Censused KAKAN and LAKIN groups, and talked with assembled people re. roadwork and intended agricultural development in the area. 1400-P.M. Census statistics.

Saturday 6th.

0800-0930 Walked to TIKIKIS. 1200-1400 Censused TIKIKIS and KAI lines and talked with people. 1200 Walked to LAKIN for road inspection, talked with village officials re influenza epidemic in area.

Sunday 7th.

0800-0930 Departed TIKIKIS and walked to LAKIN. P.M. Census statistics.

Monday 8th.

AM Censused LAKIN and KUN groups and talked with people. PM Census statistics.

Tuesday 9th.

AM Censused the two lines of KAPAKIN. PM Completed census statistics.

Wednesday 10th. May.

Walked to Kodes Patrol Post.

END OF JOURNAL.

ult

NATIVE AFFAIRS.

The patrol was received very well in all areas visited. Here the adequate supplies of locally grown food was made available to the patrol to feed the permanent carrier line, which was recruited from the KESUHI area.

The attitude of the indigenous people of the Lai-Mariant area seems to belie the generally accepted rule that the EMGA people are rather lethargic and loath to work. Every able bodied male is voluntarily working in his area on the Keadep-Laiagan Trunk Road or the various branch roads now being constructed. The people of this area are clamoring for a cash income and the addition of an Agricultural Officer to the Administration staff at Keadep Patrol Post, to help them attain their aim. Although through their enthusiastic roadwork they show that they realize that a good road network is an essential factor which must precede economic advancement.

As noted in a previous report the absence of criminal offences, in this area, is very noticeable in comparison with other EMGA areas such as Bougainville and New Britain. Several minor civil and marriage disputes were brought before the patrol. Where possible the village officials were asked to settle these amicably and those which required court action were sent to Keadep Patrol Post to be dealt with by the C.I.C. Mr. N. Allen.

CENSUS AND STATISTICS.

The attendance at the census was good at all centres with only a small number of absentees and none without a reasonable excuse.

This revision of the census reveals a total population of the Lai-Mariant area of 10,693 and increase of 247 which is a 2.3% in the last ten years.

There were 456 births as against 159 deaths, this favourable balance has no doubt been caused by the increase of Aid Posts and medical treatment in the last ten years.

VILLAGE OFFICIALS.

The majority of the village officials are doing a satisfactory job and at this stage there is no need for further recommendations.

The officials of the census division are listed below with the population of their respective groups.

Lai Valley.

Mariant Valley.

- |                  |                 |                   |                |
|------------------|-----------------|-------------------|----------------|
| KUWAKEN pop. 345 | Inland Senuari. | FIKADA pop. 268   | Tultal Sep.    |
| PABULI pop. 399  | Tultal Papagai. | KASOROS pop. 258  | Inland Senk.   |
| KASHEP pop. 284  | Senshei Ipelek. | ANAKAP pop. 282   | Tultal Asbon.  |
| ENKAS pop. 486   | Tultal Taro.    | KALIMAKA pop. 300 | Tultal Apai.   |
| PUNER pop. 228   | Tultal Ai.      | GIN pop. 172      | Tultal Iarua.  |
| BOFURE pop. 234  | Tultal Papaga.  | SEPI pop. 364     | Tultal Irapus. |

ula

MIGRANT

LAI VALLEY

MARIANT VALLEY

IARON	Pop. 195	Headed	BARUA
KIARAU 1	" 279	Taitai	KOLIE
KIARAU 2	" 355	Isilani	KORAN
INTERUS	" 357	Taitai	IASU
KAK	" 185	Headed	ANUP
LAUVE	" 379	Taitai	ASB
NUVA	" 307	Taitai	KUBIKI
WARABIA	" 612	Taitai	ANGAP

KACA	Pop. 301	Taitai	TURALJ
TURIPAGA	" 461	Isilani	POKAP.
IEKUN	" 155	Taitai	SANDIK.
KERUKUN	" 174	Headed	WARA
WER	" 240	Taitai	POKORAS
KAMHIA	" 468	Taitai	KAS
KARABAI	" 136	Taitai	TUP
KINTO	" 227	Taitai	ROPARA
ANDORARA	" 153	Taitai	P'NO
TANANIS	" 134	Headed	TWUAS
LAALAP	" 350	Isilani	LANARA.

ROADS AND BRIDGES.

As stated previously every able bodied male in the Lai-Mariant Census Division is voluntarily employed on the construction of the main Laiagam-Kandop Trunk Road or the various branch roads which are due on the way.

The intended plan is to link by road all West Houses or census centres in the area under administration from Kandop Patrol Post.

The roads under construction in this area are as follows.

The Laiagam-Kandop Trunk Road.

The total distance of the Kandop - Laiagam Road is 42 miles of which 24 miles have been constructed on the Kandop side. Fourteen (14) of these were built between September and December of last year. (See Kandop Patrol Report No. 4 1963/64.)

As much as 80% of the road built prior to this date is being diverted and discarded due to the impracticable steep grades and the unnecessary winding characteristics.

Some of the road completed between September and December of last year is being changed.

The main diversion under construction is on the section between INTORU and IARON, approximately 5 miles. This will discard 7 miles of badly constructed, hilly and winding road. Another diversion of 3 miles at LAUVE, to eliminate an exceptionally steep section of road built during late 1962 and early 1963.

I think to complete the diversions, shape and gravel the whole of the Kandop side, for a good all weather road, will take until the end of this calendar year.

The Kandop-Mariant Branch Road.

This road when completed will link with the Kandop Station all the West Houses on the northern side of the Mariant Valley. KANDORUS, KALISAMA, GIN SAPI, TURIPAGA and WER.

ula

The section between KOMBOROS and GIN has just been completed. The remaining long section between GIN and WER was completed previously in 62/63, although the routing leaves a great deal to be desired it will be used for expediency. However it requires a great amount of work, shaping and bridge construction etc., before it will be trafficable.

This road will be drivable to TURIPAKA in about three weeks although it will not be all weather. When the road is finished to WER it will have a total distance of 12 miles.

#### The Kambia-Kangba Branch Road.

This road when completed will link KAMBIA, which is situated on the southern side of the Mariant Valley.

Already completed is the section from the Kambay station to the Mariant River, and a 2 mile section from the KAMBIA Rest House towards the Mariant River.

This road is expected to be completed in approximately 4 months and will have a total distance of 8 miles.

#### The Kambay-Kambay Branch Road.

When completed this road will link the station with KAMBAY which is due south of the Patrol Post. Already completed is the section from the station to the Lai River.

This road is also expected to be completed in 4 months and will have a total distance from Kambay Patrol Post of 5 miles.

#### The Iabum-Iabum Branch Road.

The section between IABUM and IABUM is just about completed and will be approximately three miles long. Another section on the other side of the Lai Valley, from IABUM to the Lai River is also near completion.

To link these two sections will require the building of a stretch of road  $1\frac{1}{2}$  miles long across the very swampy Lai Valley.

When completed it will link with Lalagoo-Kanday Trunk Road at IABUM providing access to the station. The distance from IABUM to IABUM will be 6 miles and should be completed in 6 months.

As seen from above approximately 70% of the planned 50 miles of road in the Lai-Mariant area has been completed. The majority of this area is devoid of gravel and it is disheartening for the people who have to carry the road gravel long distances.

It is hoped that the frequent requests from here for a tractor and trailer to help in the work will be fulfilled as soon as possible.



ula

MISSIONS

MICROVNO

F M

In the Lai-Mariant area there are four missions involved in their various activities. These are the Seventh Day Adventists, the New Guinea Lutheran Mission Missouri Synod, the Apostolic Church Mission and the Catholic Mission of the Holy Trinity. The latter three, which have European staff based permanently in the area, wield the most influence.

The Lutheran Mission is the largest of all the missions in this area. They have a European pastor, his wife and an Infant Welfare Sister stationed at IOKAS, which is 2 miles from Kandi station on the Laingas-Kandi Trunk Road. The mission also has another station at TIMJIPAKA in the Mariant Valley which is staffed by a European teacher and his wife.

The mission has numerous outstations and also maintains two Aid Posts and several schools. The educational and medical activities will be dealt with more fully in the appropriate appendices.

The Apostolic Church Mission, which is run by a European pastor and his wife is situated at SAMP, a half mile south from the government station. This mission also has numerous outstations but mainly confines its activities to religious matters.

The Catholic Mission has a European Father based at PIMBAR. He mainly confines himself to religious activities although he hopes to build up a school to secondary standards starting first with the primary school.

CONCLUSION

All objects of the patrol were completed satisfactorily. The census was revised and the figures for same are included in this report. The native situation is good as can be seen by the enthusiastic way in which the people co-operating with the Administration to complete roadworks etc.

The roadworks in this census division are progressing very well and by the end of this calendar year, there should not be any area not in road contact with KANDOP Patrol Post.

Lloyd Barr  
Chief Patrol Officer.

ula

APPENDIX B.

ICRATHO

F M

REPORT ON MEMBERS OF THE BRITISH PAPUAN AND NEW GUINEA CONSTABULARY ASSOCIATION

THE CADUCE PATROL No. 1965/64.

NAME NO.

POST.

Comments.

10867

CADUCE

A young and enthusiastic policeman although is not forceful enough.

.....  
Lloyd Barr  
Cadet Patrol Officer.