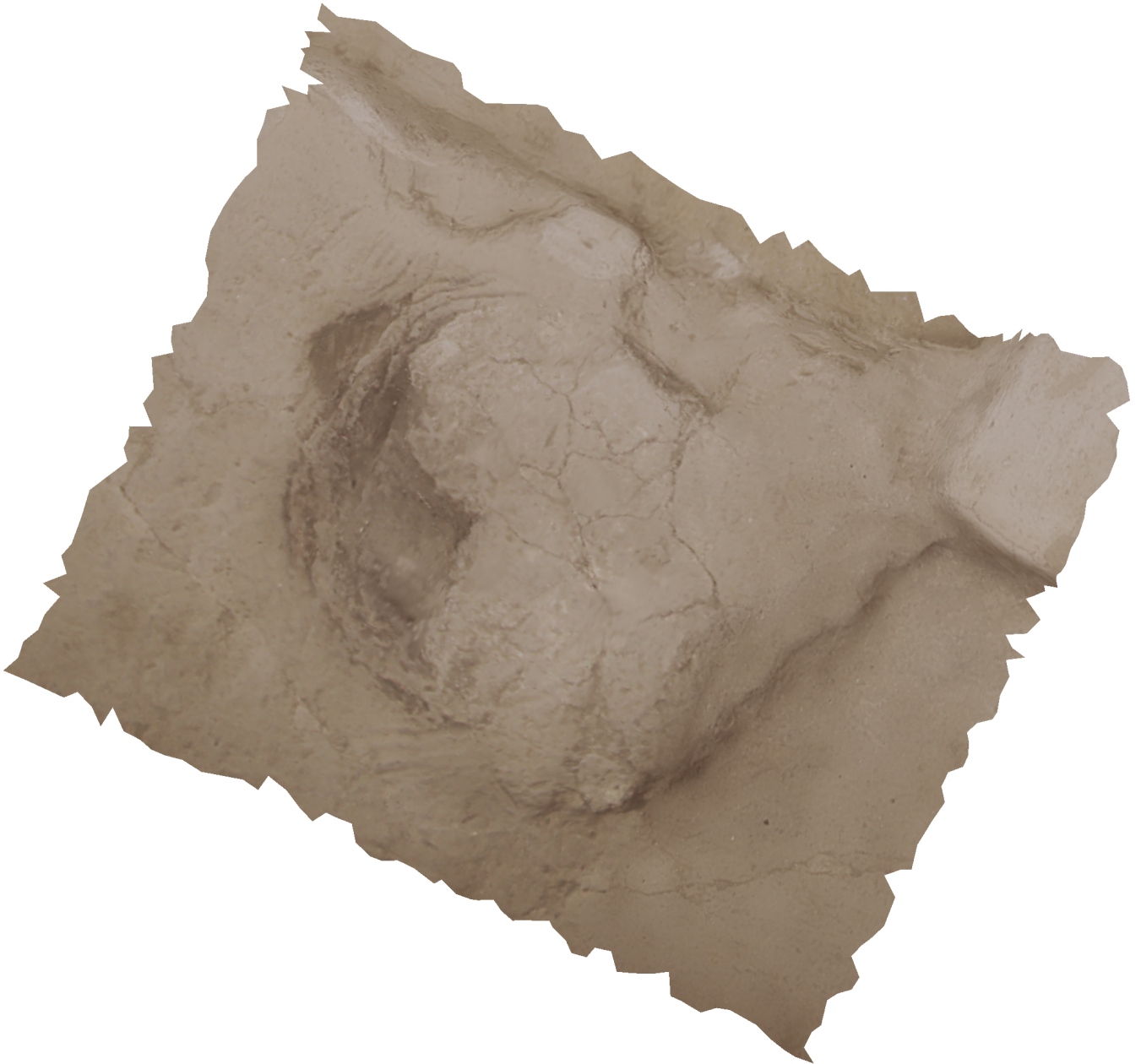


# Agisoft PhotoScan

Processing Report  
16 November 2014



# Survey Data

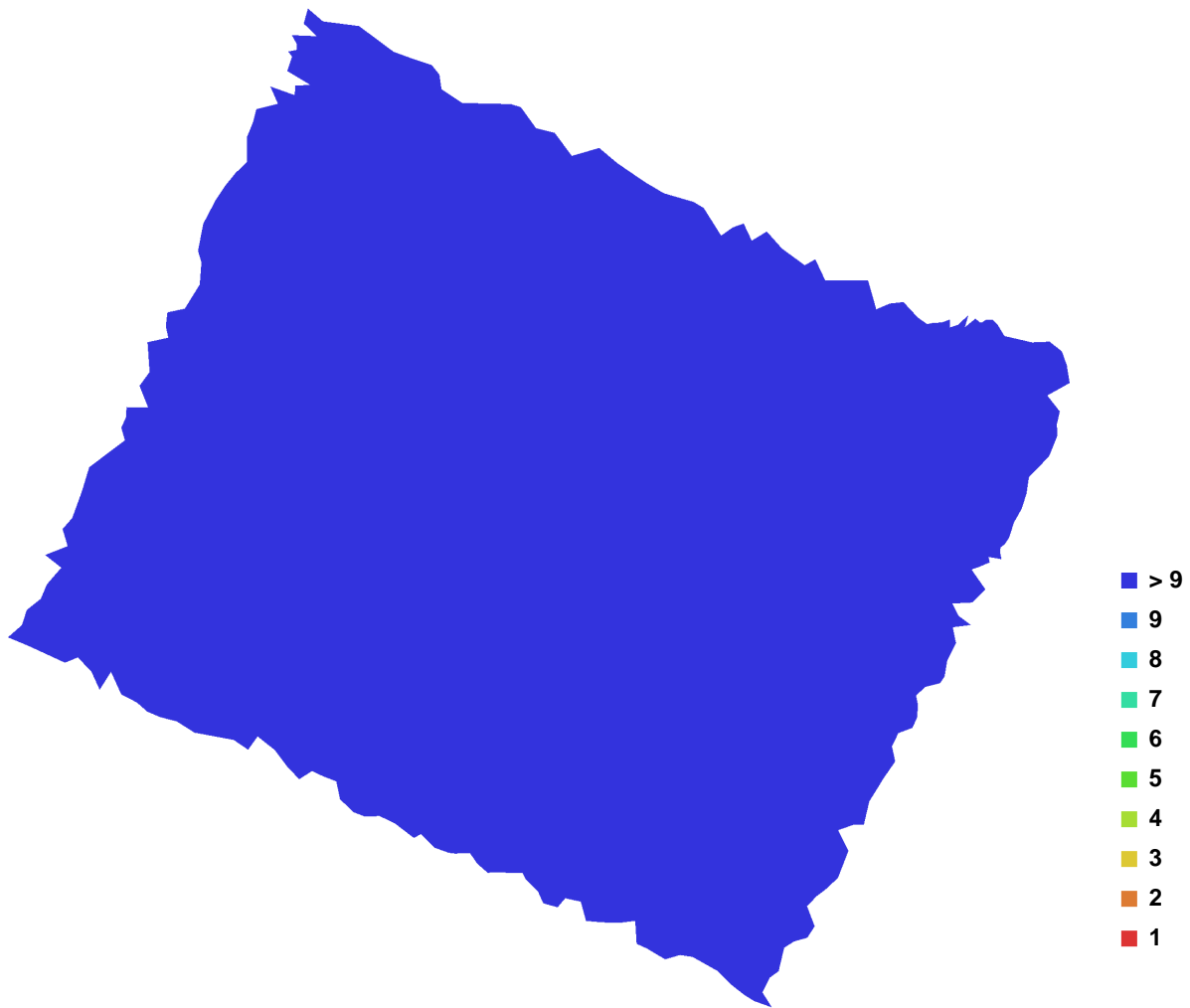


Fig. 1. Camera locations and image overlap.

Number of images:	44	Camera stations:	44
Flying altitude:	3.98159 m	Tie-points:	20557
Ground resolution:	0.00111508 m/pix	Projections:	56885
Coverage area:	1.3414e-006 sq km	Error:	0.449493 pix

Camera Model	Resolution	Focal Length	Pixel Size	Precalibrated
Canon EOS 60D (17 mm)	3456 x 2304	17 mm	6.6054 x 6.6054 um	No

Table. 1. Cameras.

. . .

# Digital Elevation Model

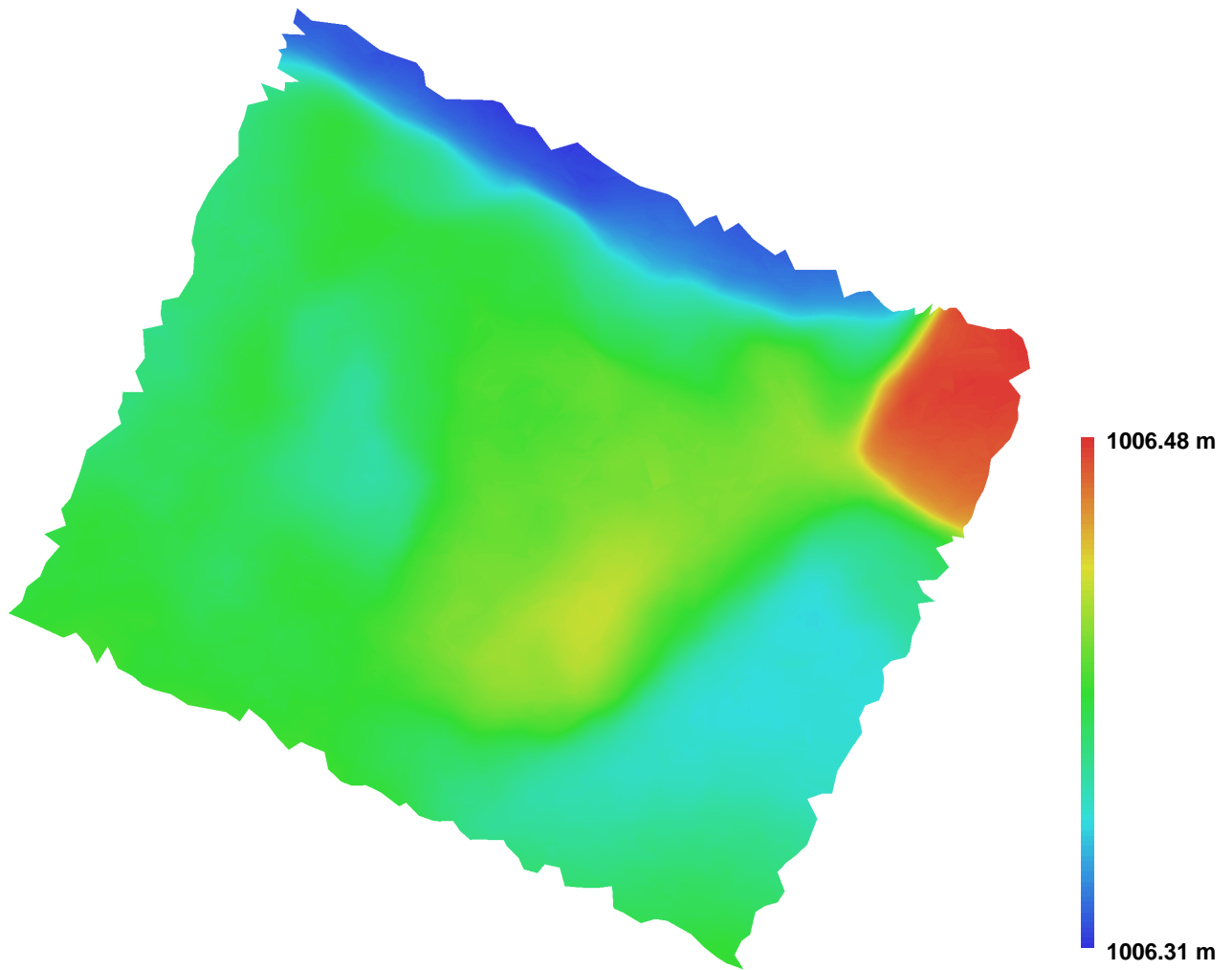


Fig. 2. Reconstructed digital elevation model.

Resolution: 0.00446032 m/pix  
Point density: 50265.3 points per sq m