

*REPORT AND INDEX OF  
UNDERWAY MARINE GEOPHYSICAL DATA*

**PANORAMA EXPEDITION**

**LEG 1**

**(PANR01MV)**

R/V Melville)

(Issued April 1998)

**Ports:**

San Diego, California (2 November 1997)

to

Acapulco, Mexico (11 December 1997)

**Chief Scientist:**

Charles Langmuir (Lamont-Doherty Earth Observatory)

Ron Moe, Computer Engineer

Ron Comer, Resident Marine Technician

Uta Albright-Peckman, Sea Beam Processor

Post-Cruise Processing and Report Preparation by the  
Geological Data Center, Scripps Institution of Oceanography  
La Jolla, California 92093-0223

**NOTE:** *This is an index of underway geophysical data edited and processed after the completion of the cruise leg and is intended primarily for informal use within the institution. This document is not to be reproduced or distributed outside Scripps without prior approval of the chief scientist or the Geological Data Center, Scripps Institution of Oceanography, La Jolla, California 92093-0223*

GDC Cruise I.D.# 278

**REPORT AND INDEX OF NAVIGATION  
AND UNDERWAY GEOPHYSICAL DATA**

Processed by the Geological Data Center  
Scripps Institution of Oceanography

**Contents:**

**Index Chart** - gives track of cruise leg, dates, ports, and mileage of each type of data collected.

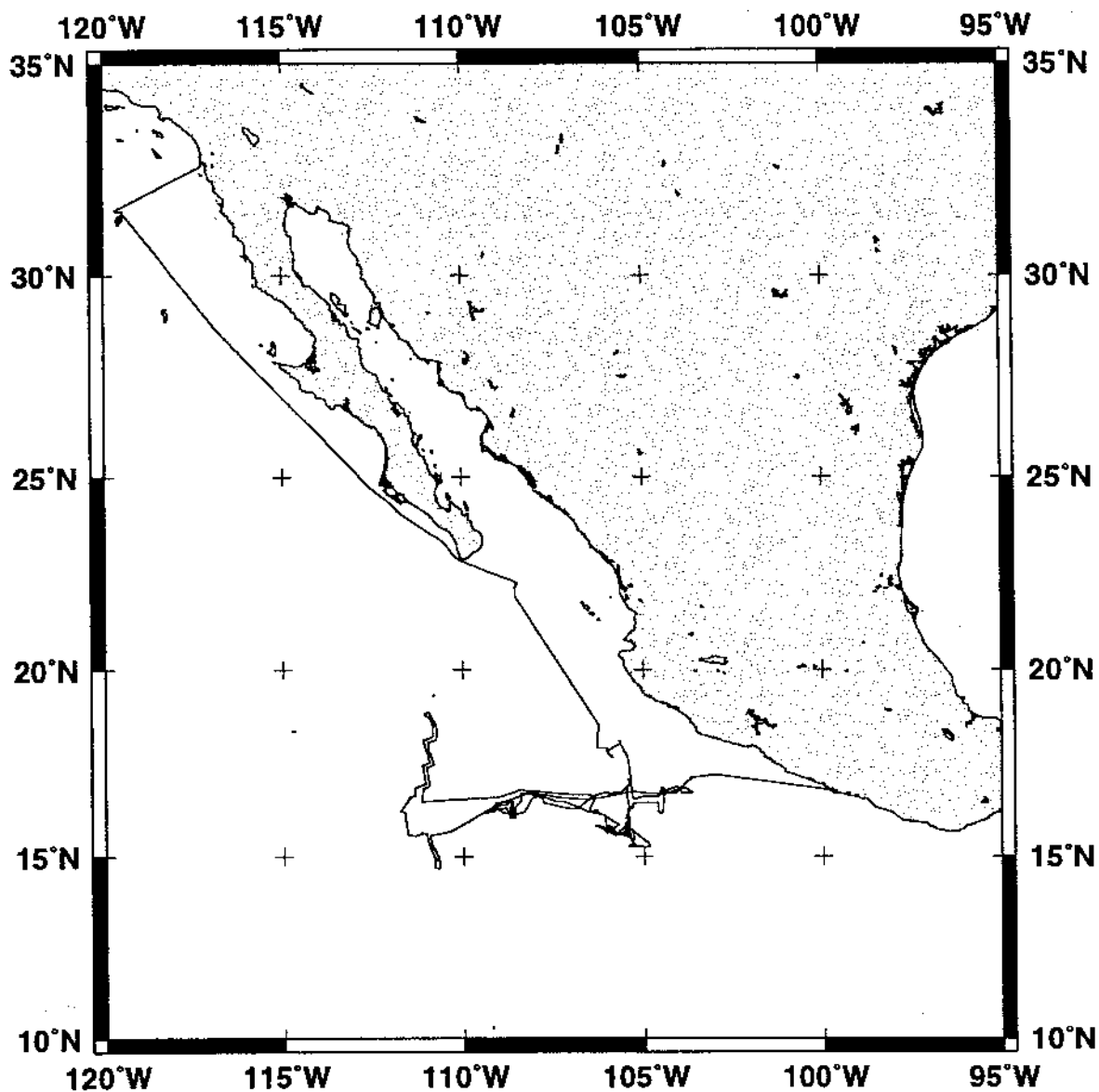
**Track Charts** - annotated with dates and hour ticks.

**Profiles** - depth, magnetic and gravity free air anomaly vs. distance. (Sections of track with seismic reflection data have a wide black line along the bottom of the profile.)

**Sample Index** - list of begin/end times and positions of all underway records as well as samples and measurements from other disciplines collected on the leg.

**NOTE:** One or more of the underway data types may not be collected on a given leg. For information on the availability and reproduction costs of data in the following forms, contact S.M. Smith, Curator, Geological Data Center, Scripps Institution of Oceanography, La Jolla, California 92093-0223. Phone: (619)534-2752, FAX: (619)534-6500, Internet email: ssmith@ucsd.edu

1. Files via ftp or on 8mm (Exabyte) and 4mm (DAT) magnetic tape:
  - a) Separate time series ASCII files of navigation, single beam depth, gravity and magnetics.
  - b) Above data in a single merged ASCII file in the MGD77 Exchange Format.
  - c) SeaBeam depth data (binary, Sun byte order)
  - d) SeaBeam Sidescan data.
  
2. Microfilm (35 mm flowfilm) or hard copies of:
  - a) Underway watch log book.
  - b) SeaBeam vertical beam profile/Sidescan records.
  - c) 3.5 kHz and 12 kHz echosounder records.
  - d) Seismic reflection profiler records.
  
3. Navigation listing with times and positions of fixes and course and speed changes.
  
4. Custom plots in Mercator projection:
  - a) Track plots.
  - b) SeaBeam depth contour plots.
  - c) Depth, magnetic or gravity values printed or profiled along track.



**PANORAMA EXPEDITION LEG 1**

**CHIEF SCIENTIST:** Charles Langmuir, Lamont-Doherty

**PORTS:** San Diego, Calif. - Acapulco, Mexico

**DATES:** 02 November - 11 December 1997

**SHIP:** R/V Melville

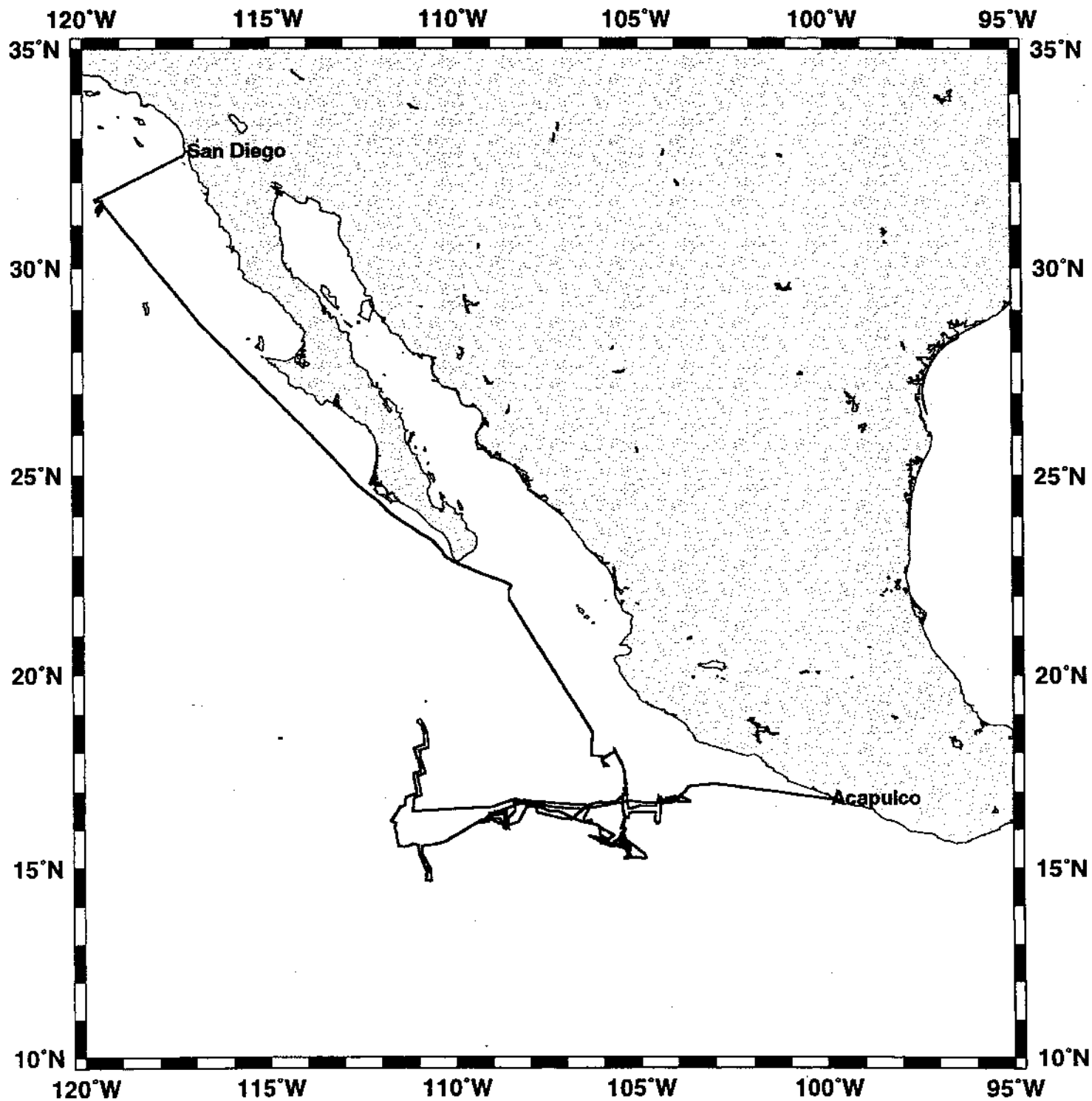
**TOTAL MILEAGE OF UNDERWAY DATA COLLECTED**

Cruise - 5031 miles      Magnetics - 1845 miles

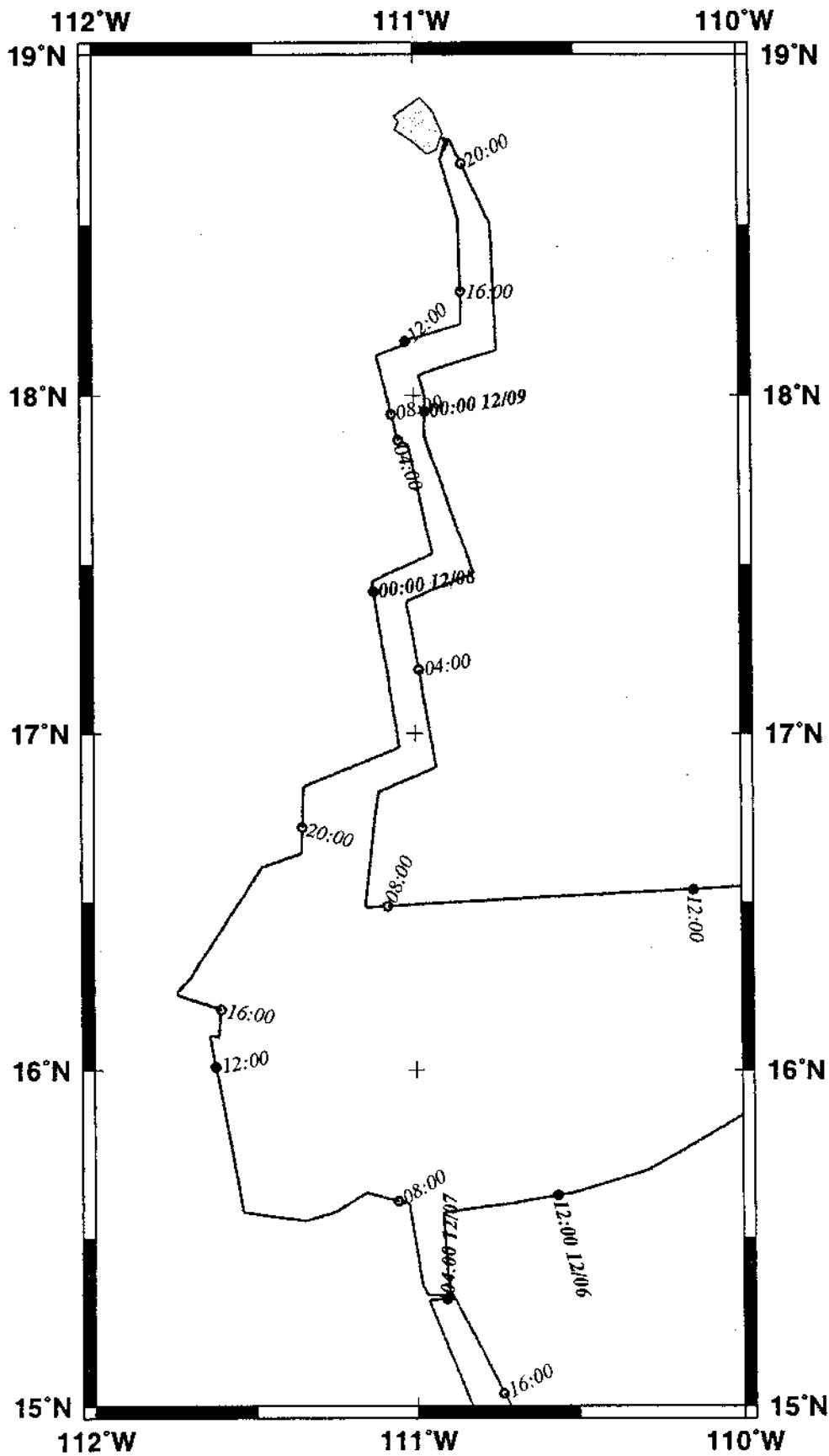
Bathymetry - 4041 miles      Seismic Reflection - none collected

Sea Beam - 4041 miles      Gravity - not processed

# PANR01MV

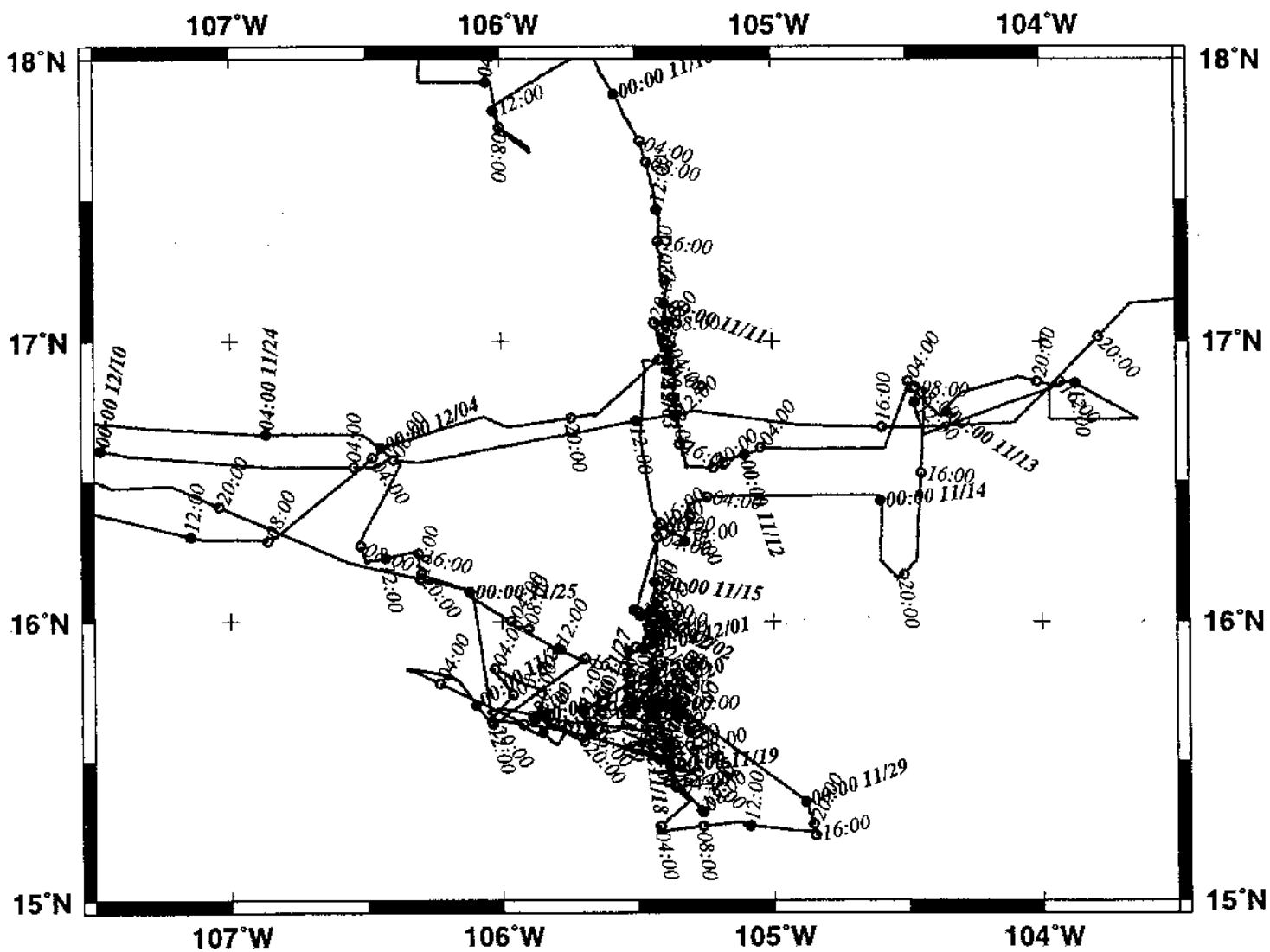


# PANR01 Survey 1



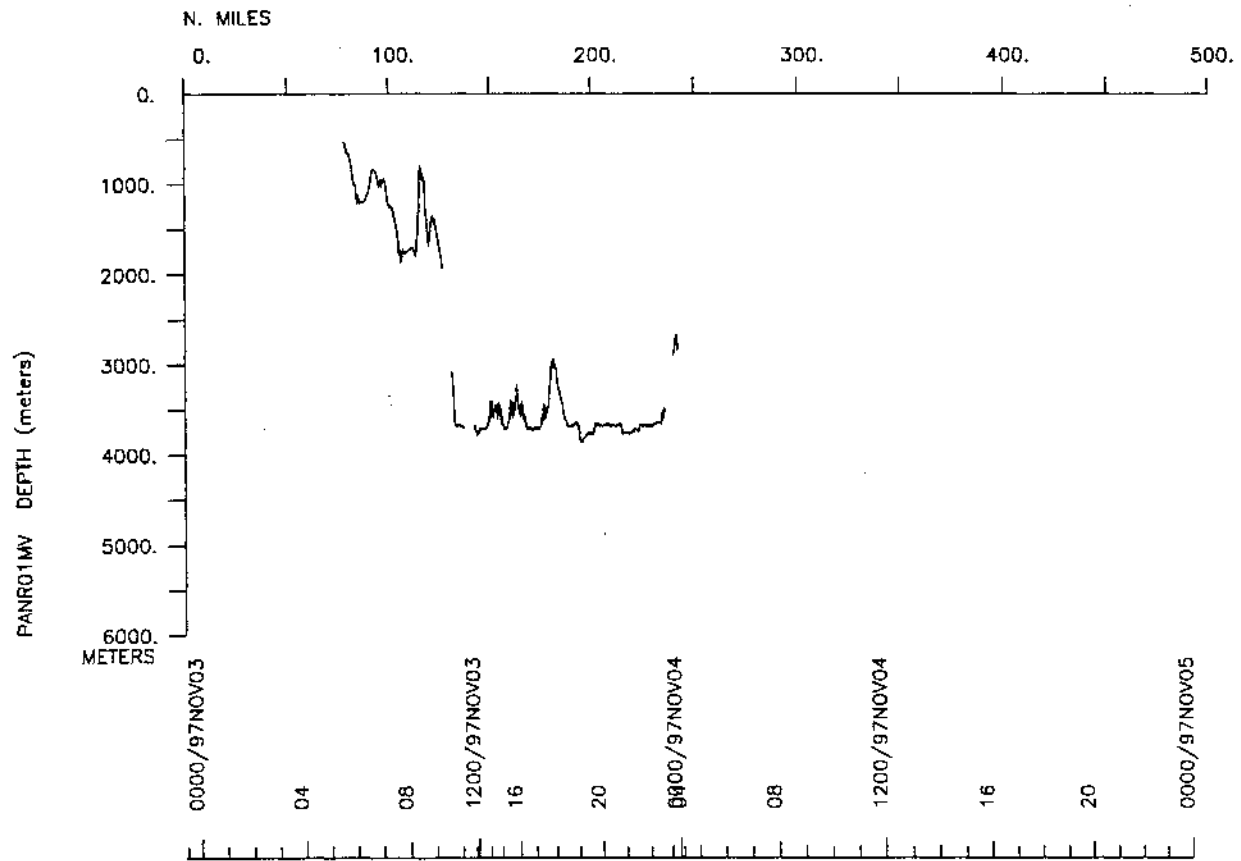
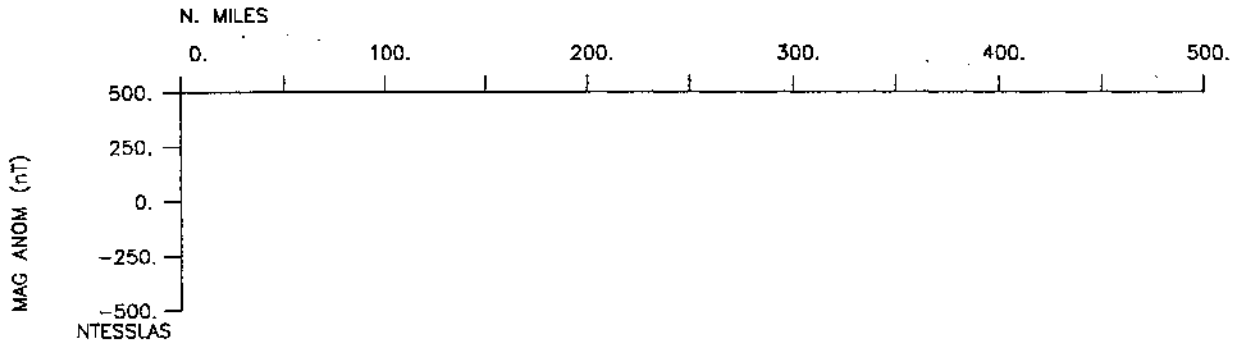
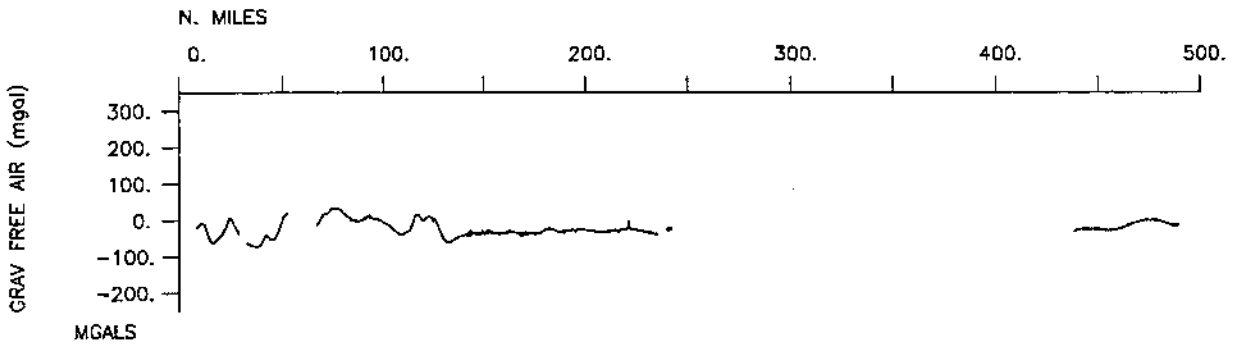


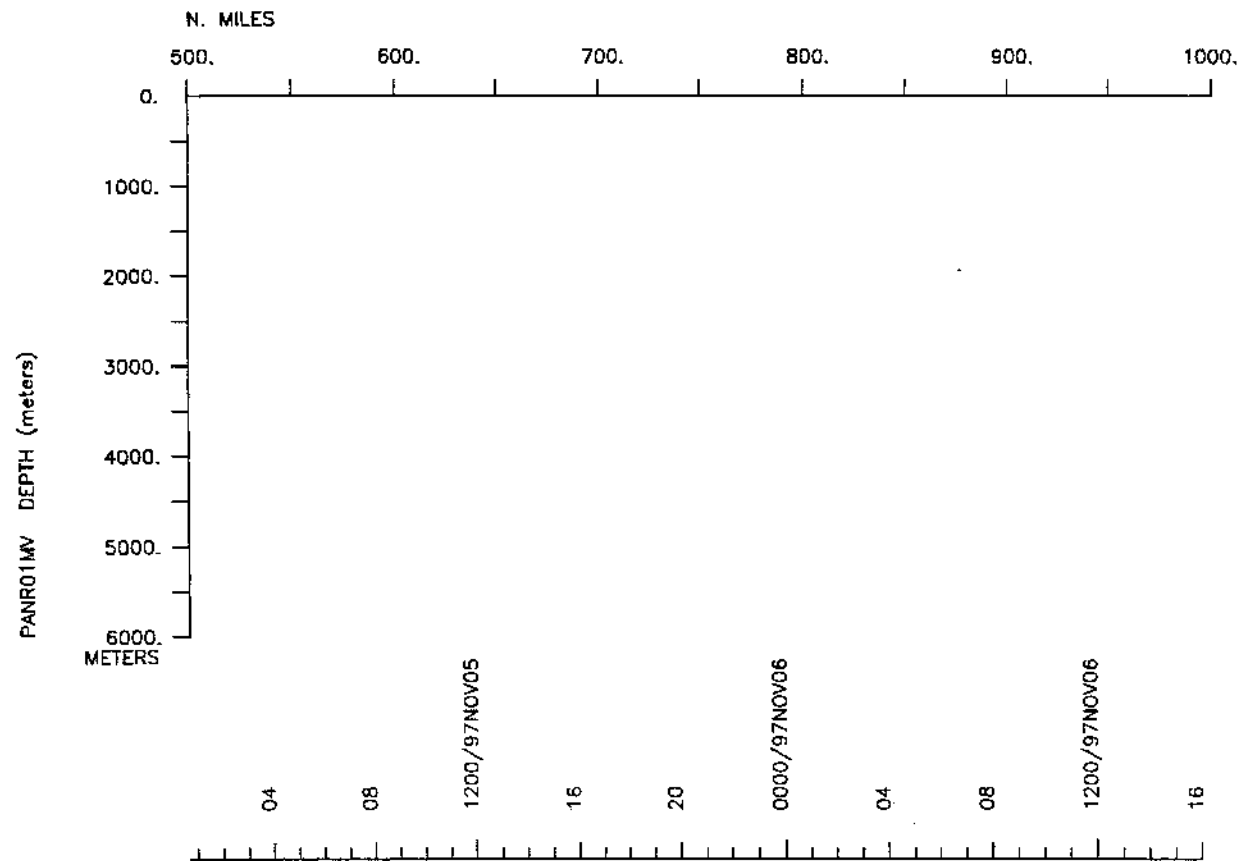
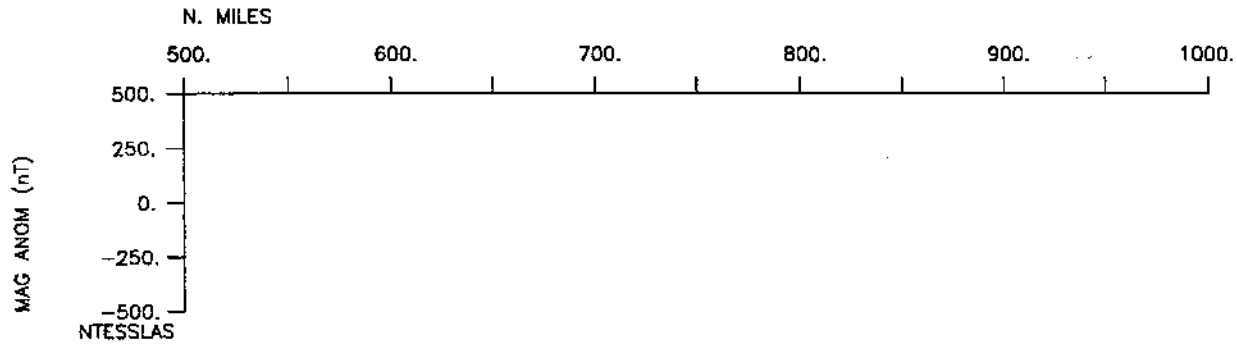
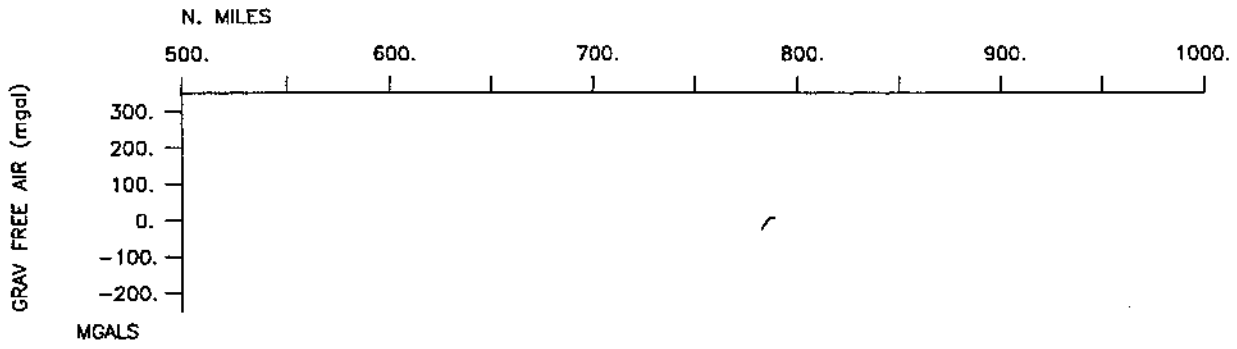
# PANR01 survey 3

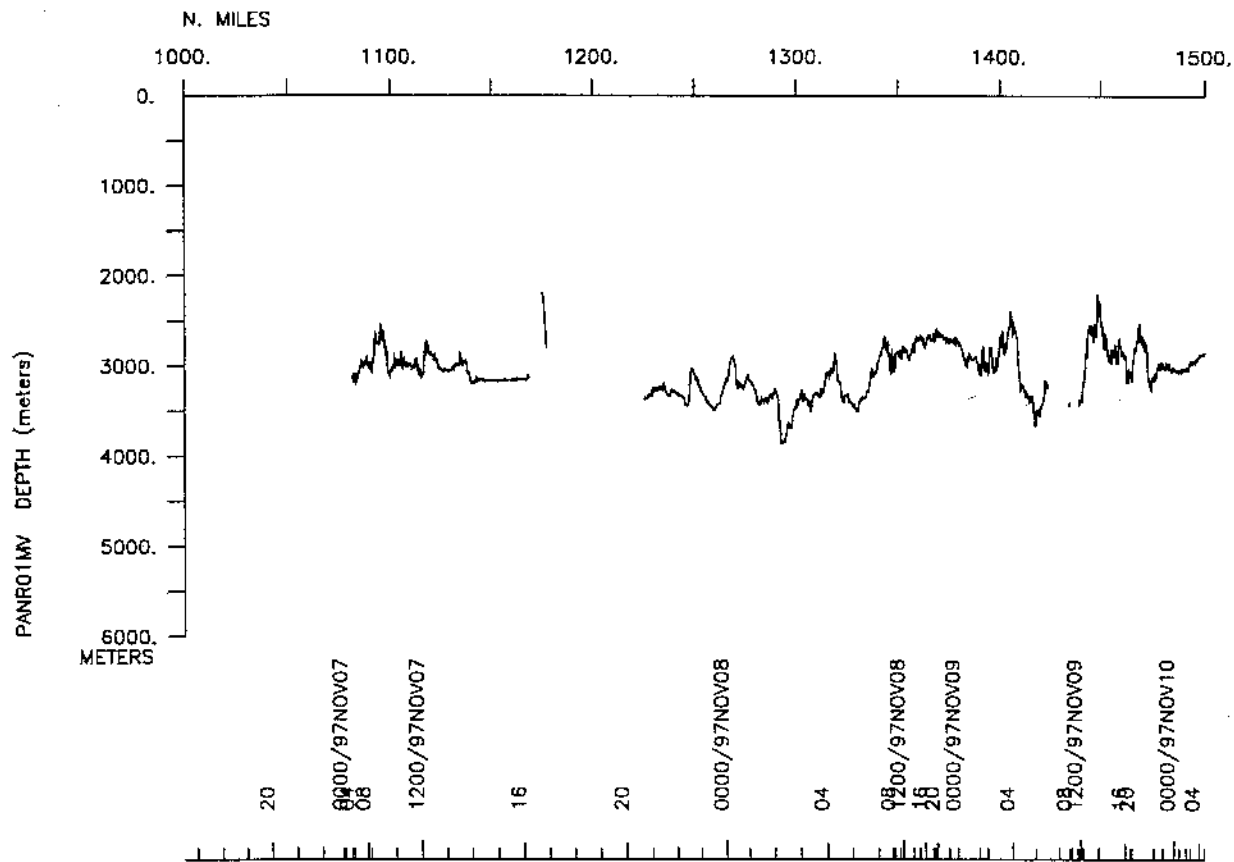
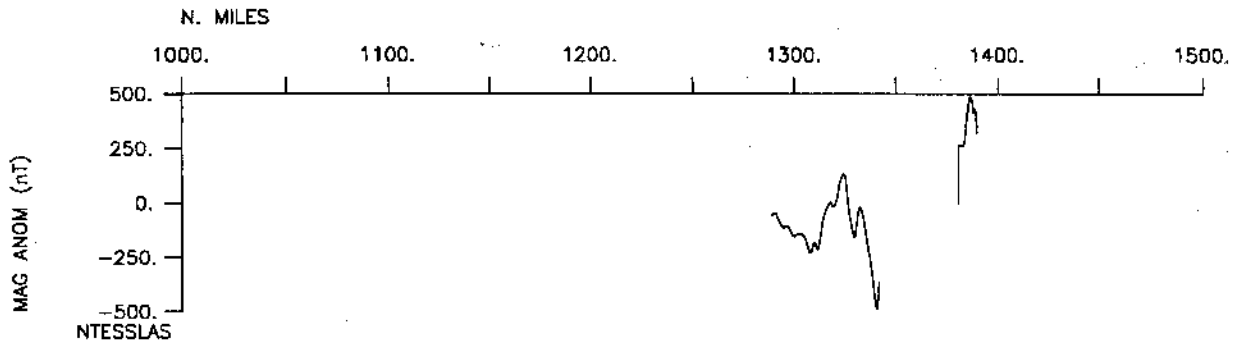
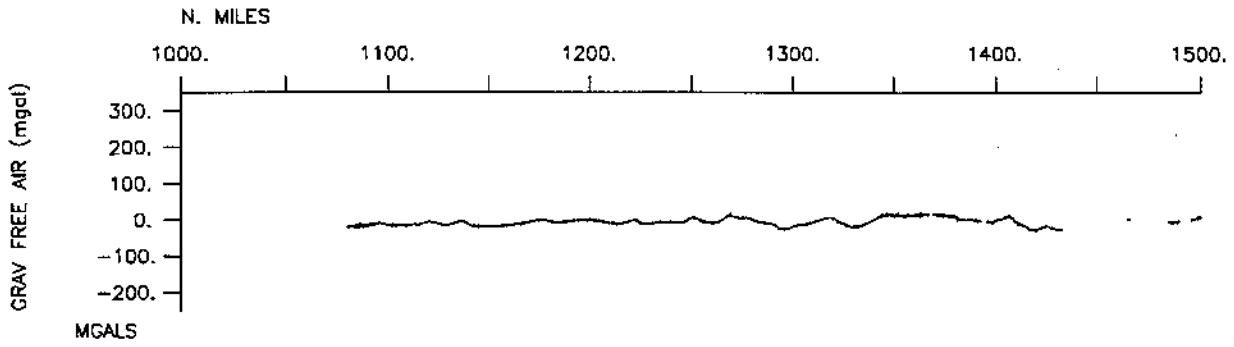


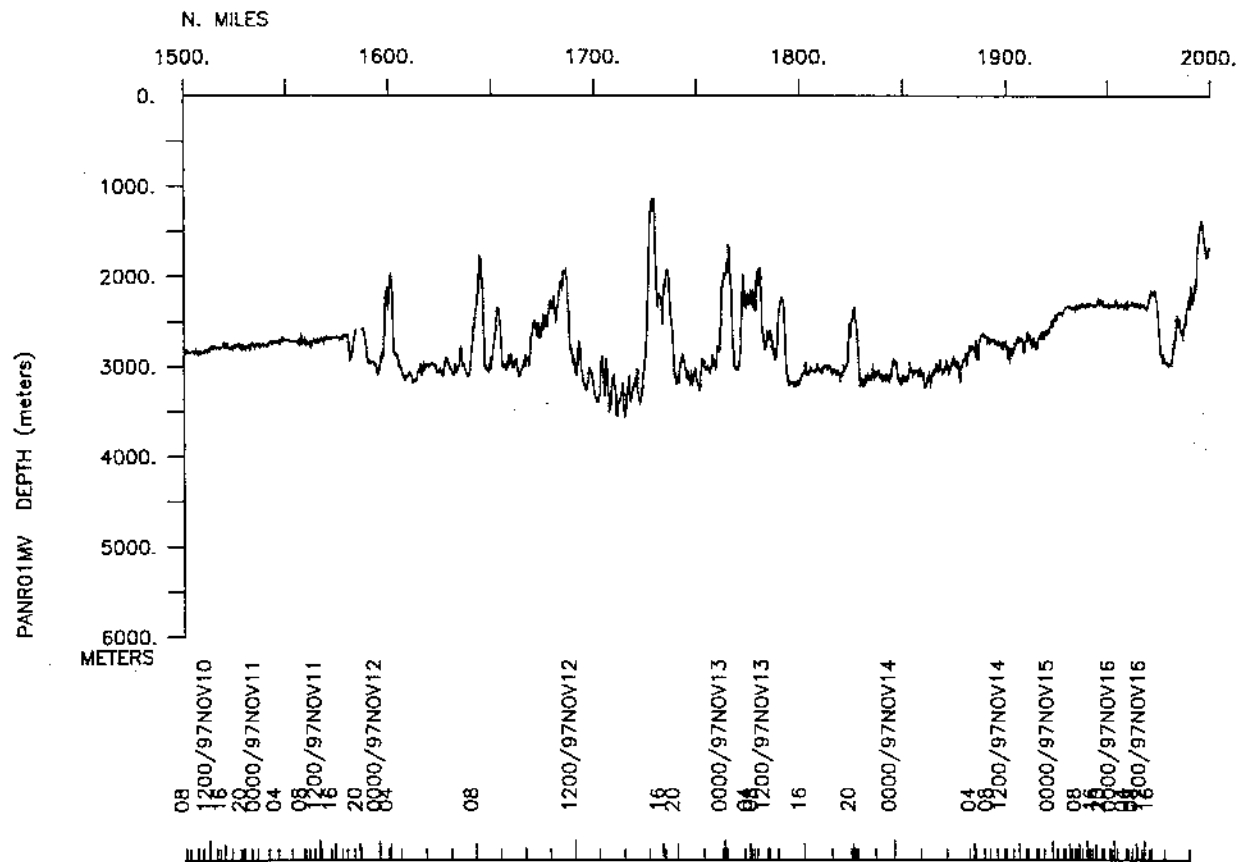
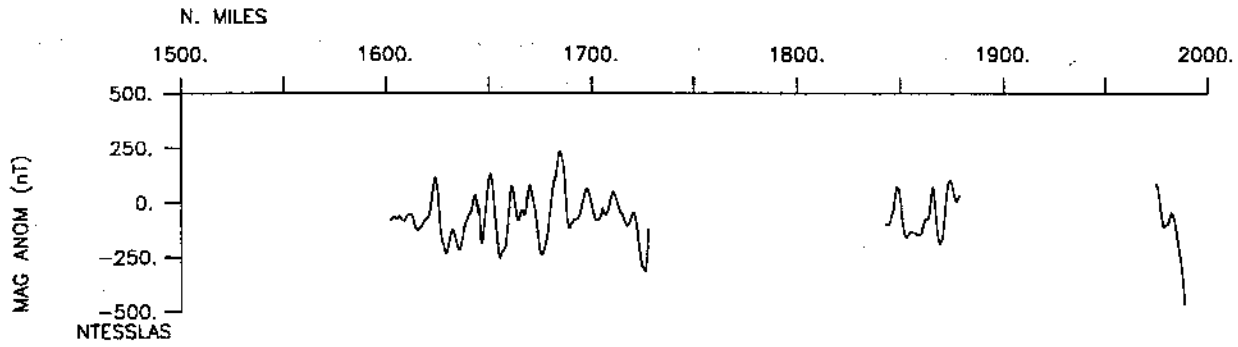
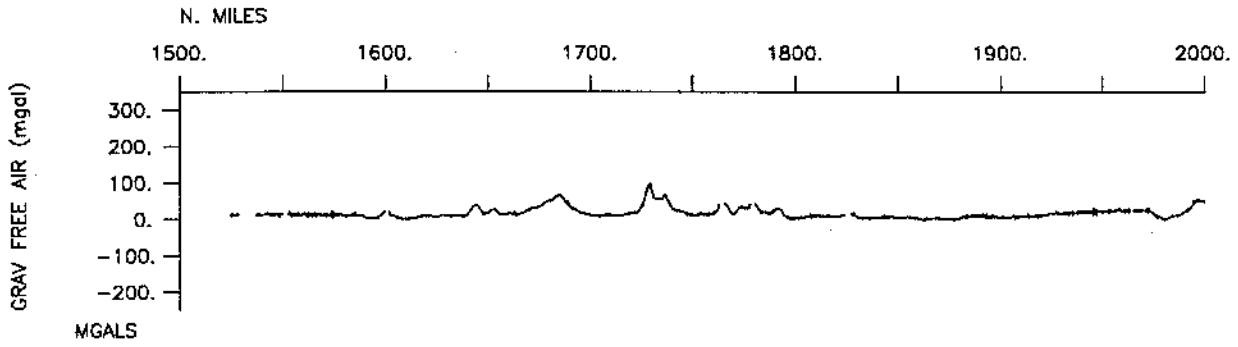


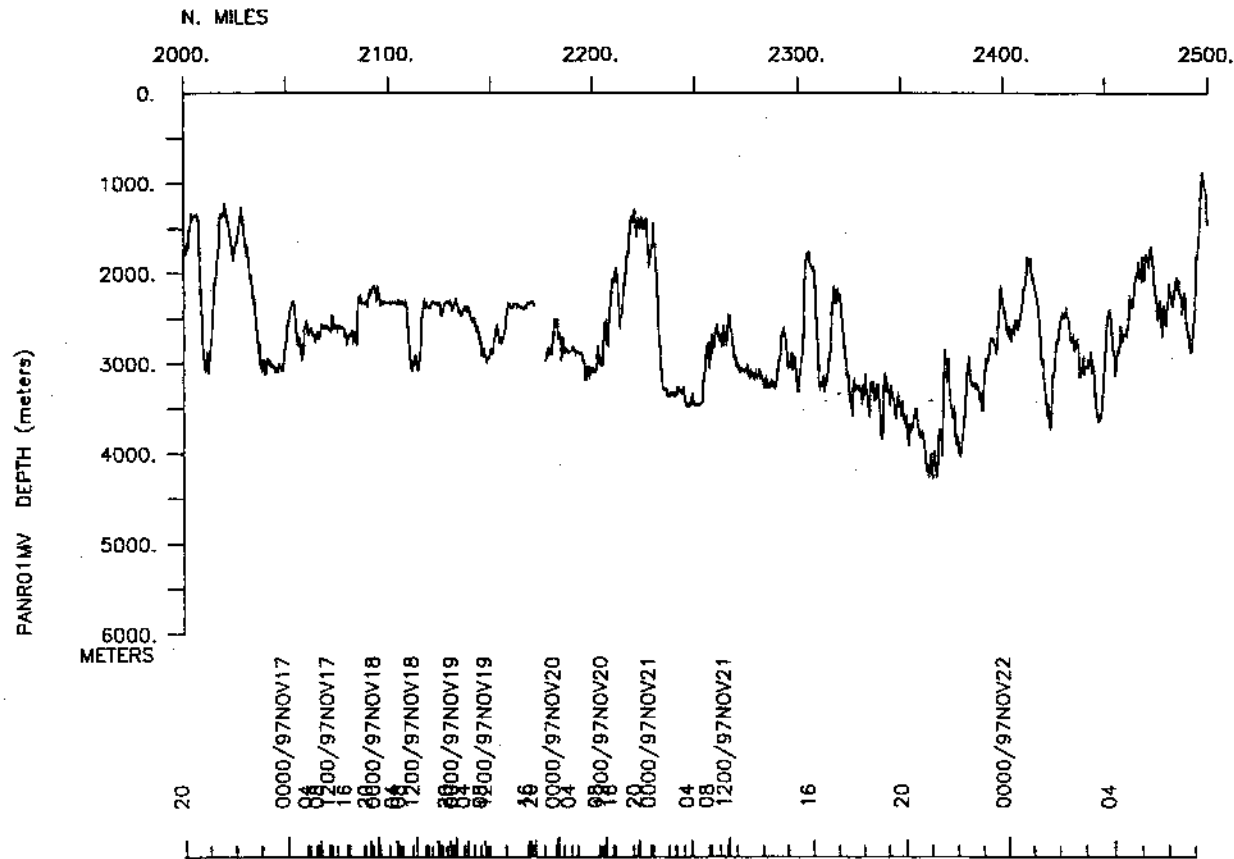
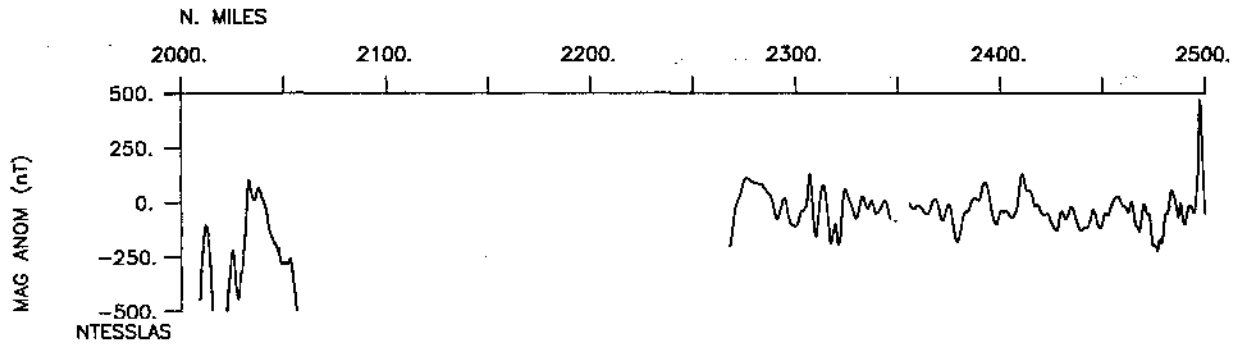
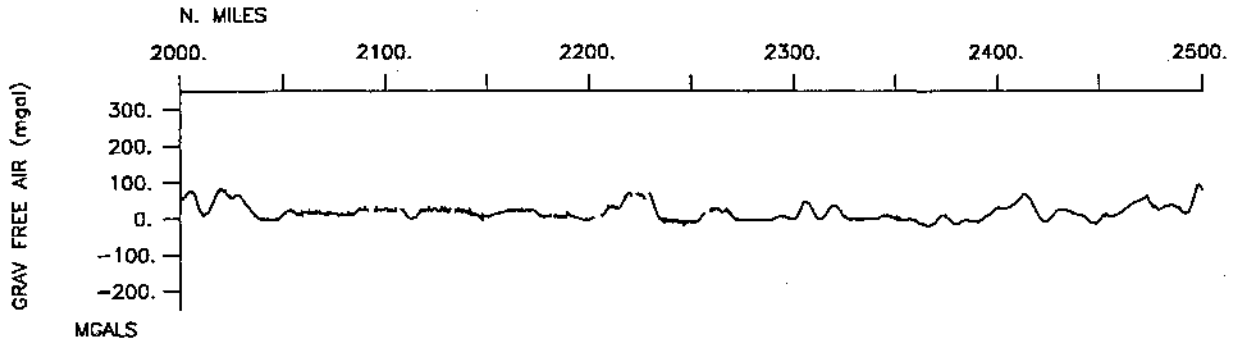


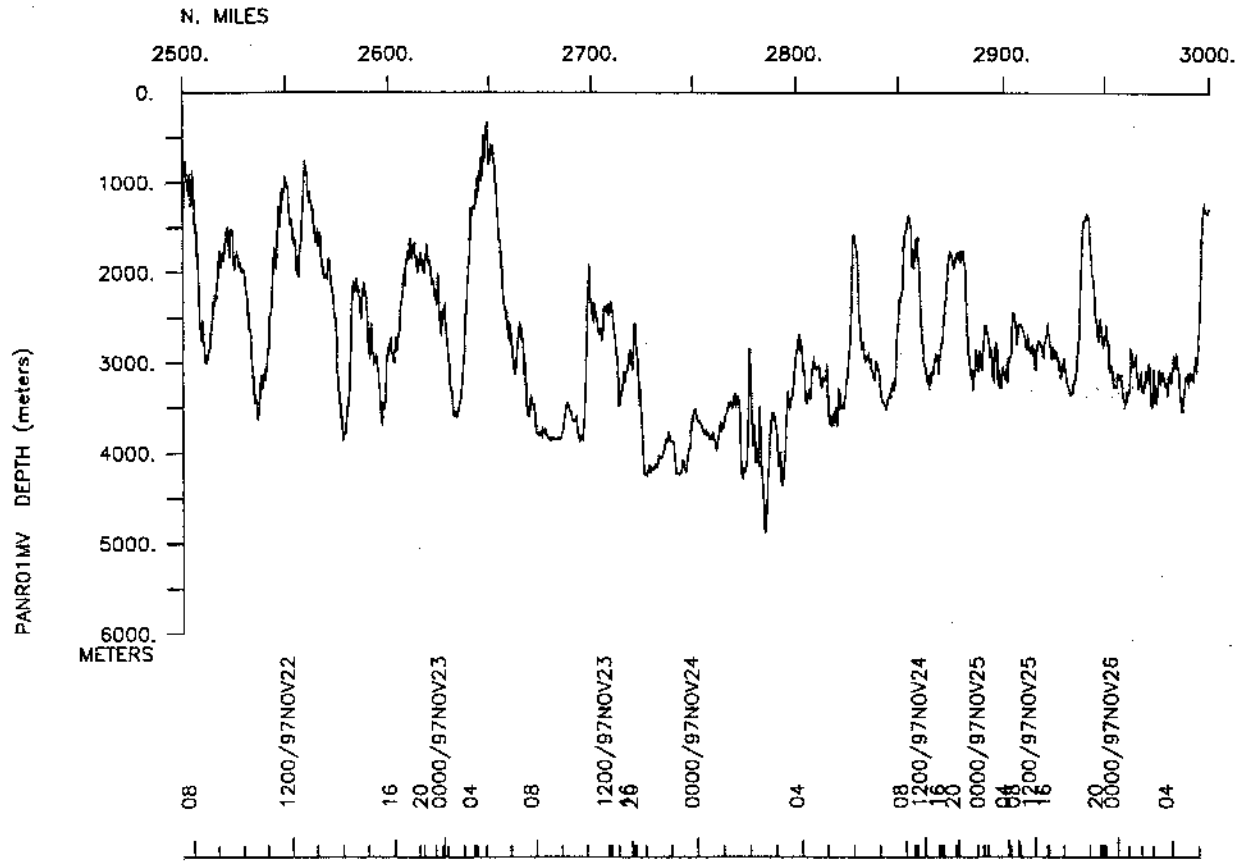
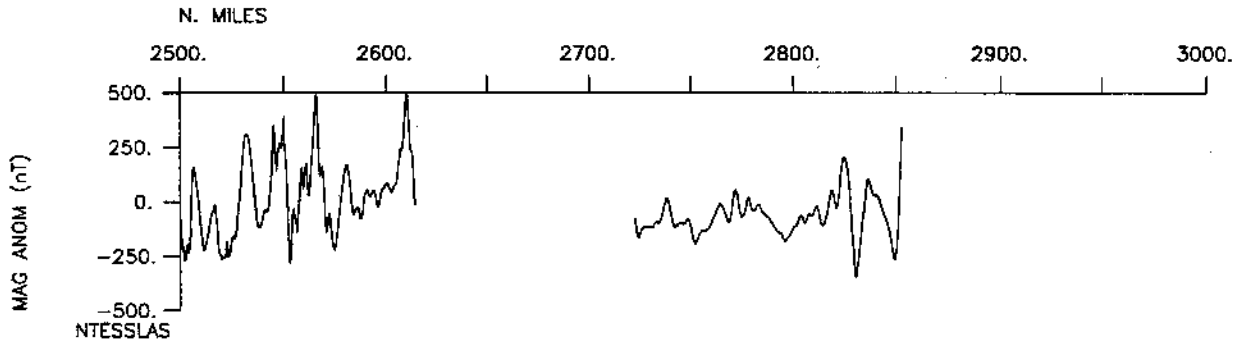
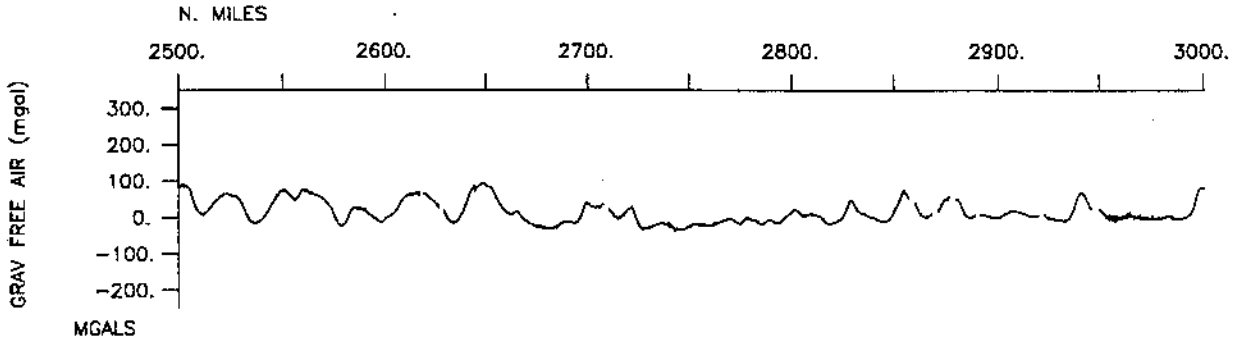


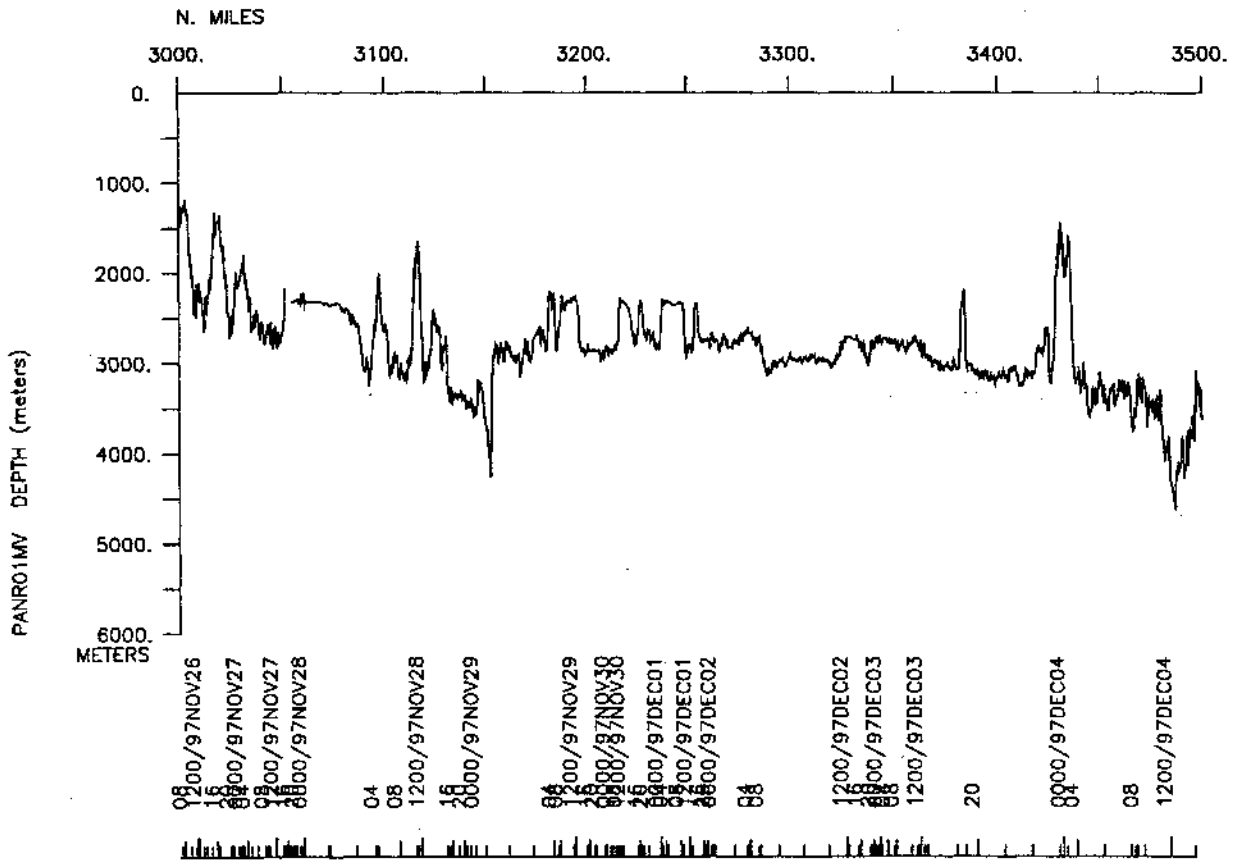
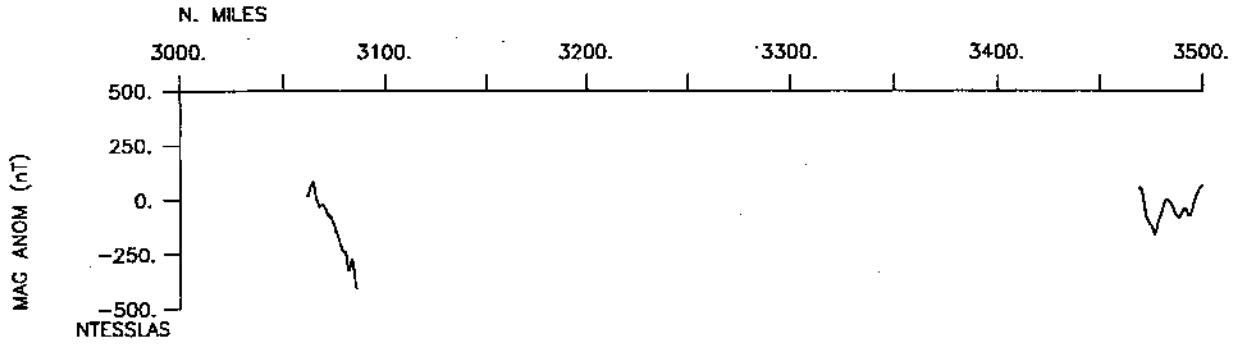
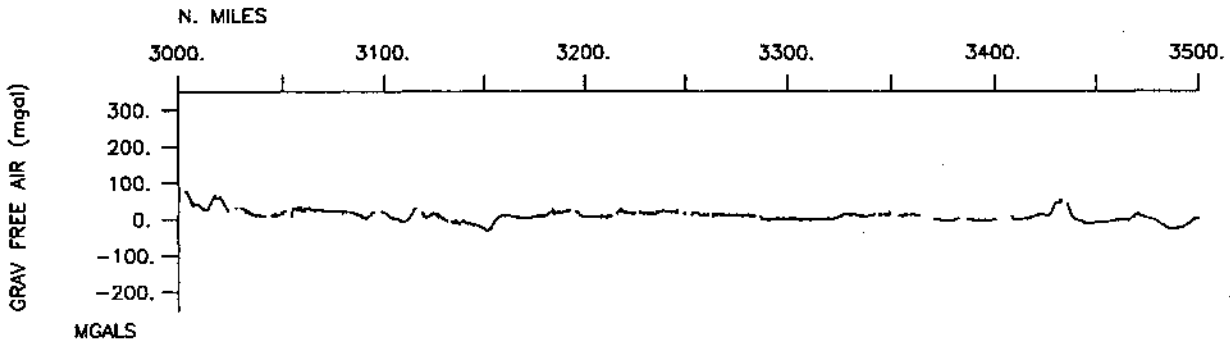


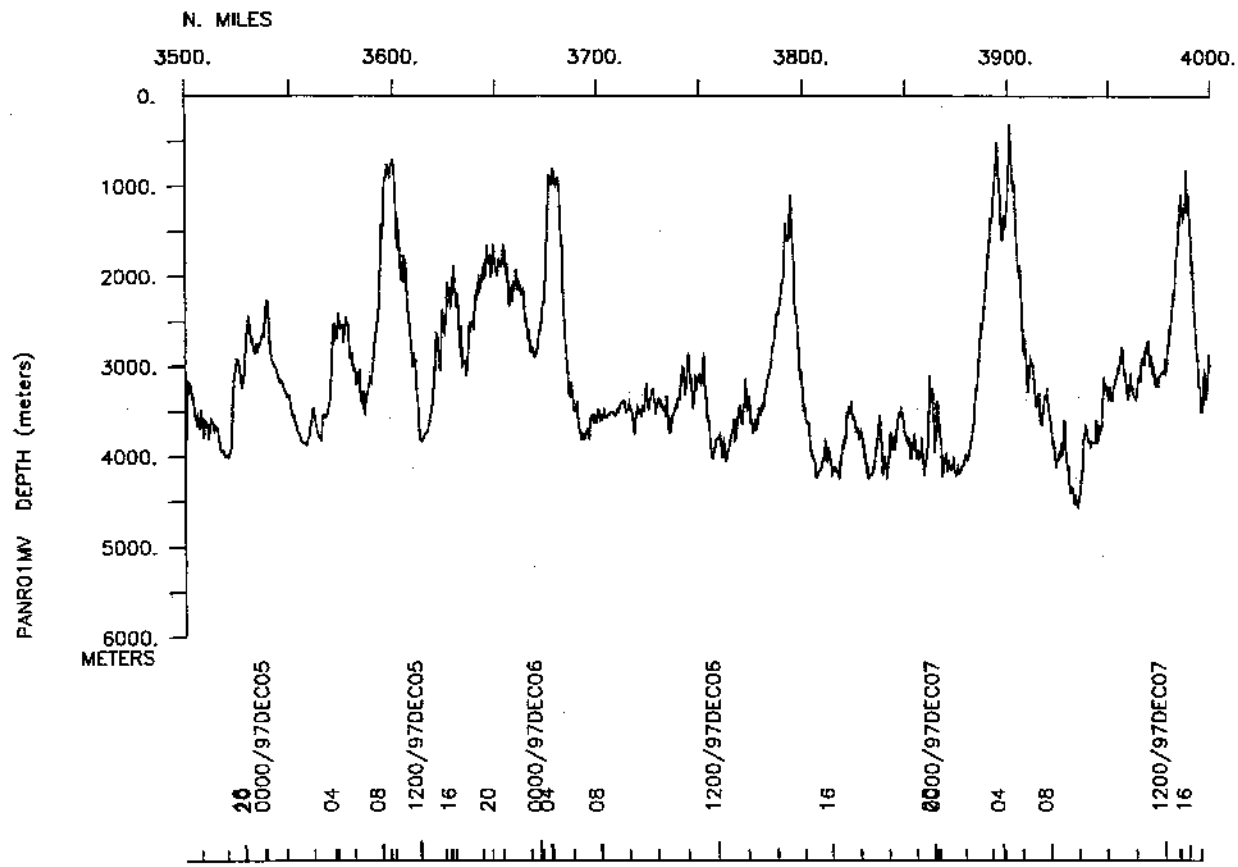
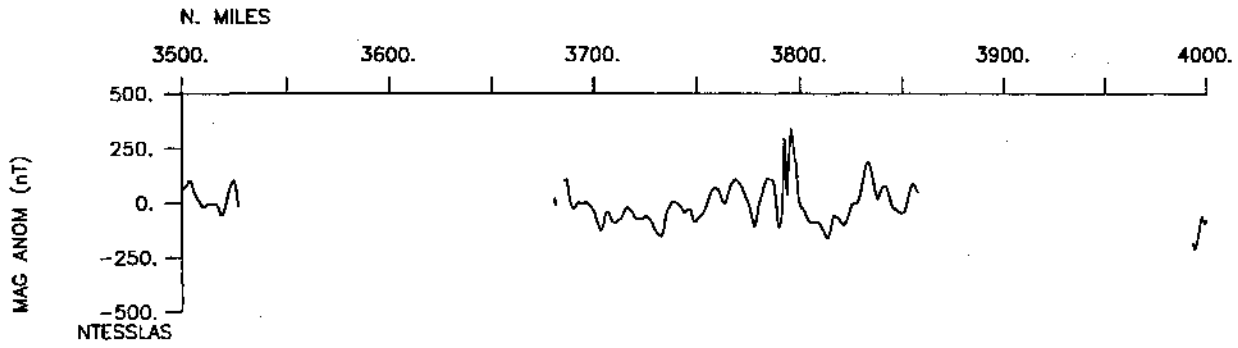
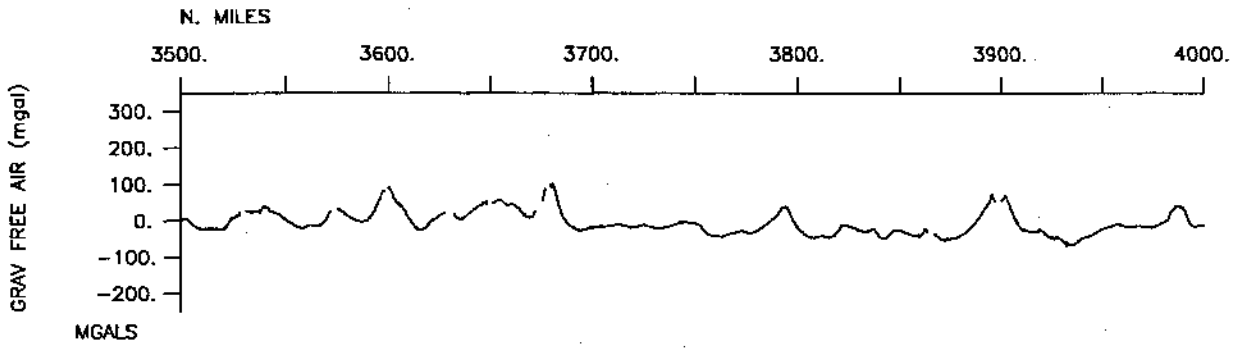




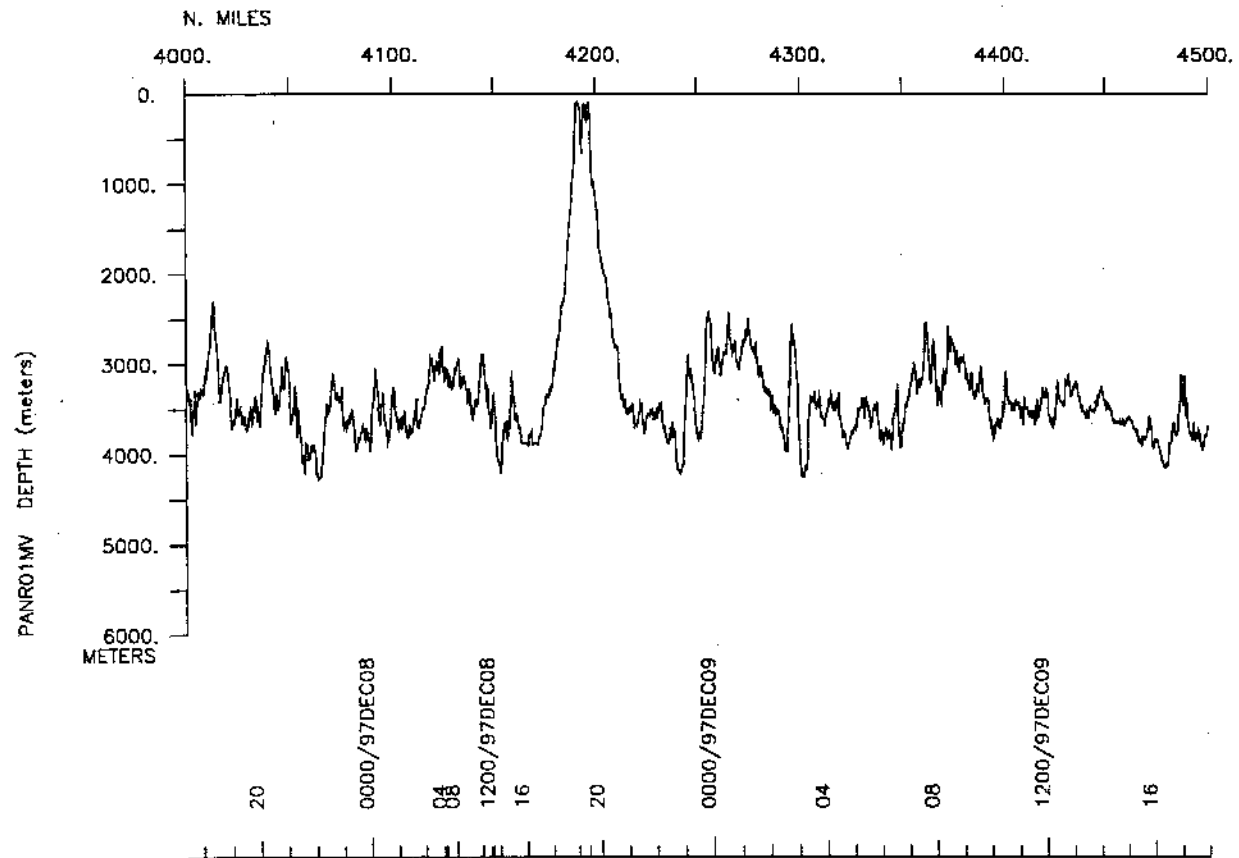
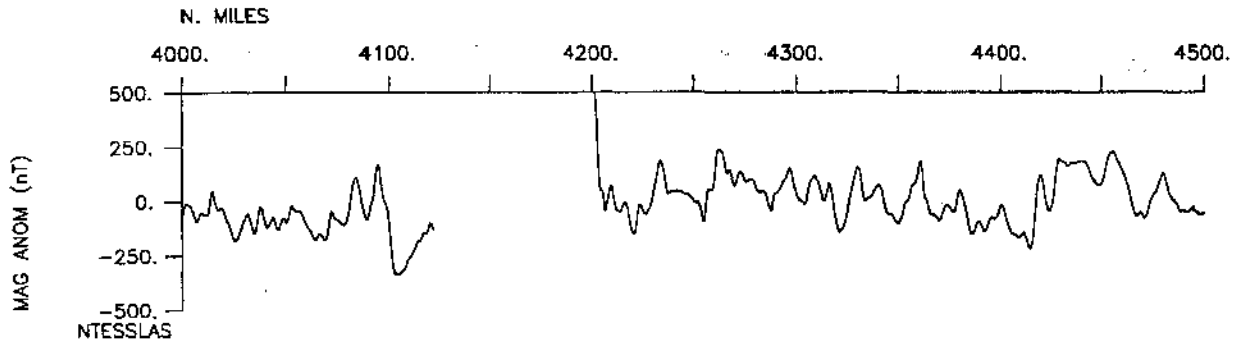
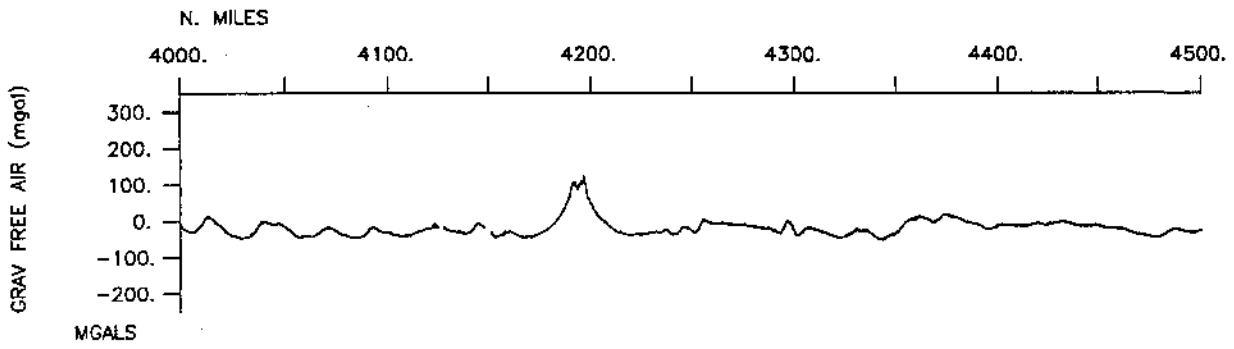


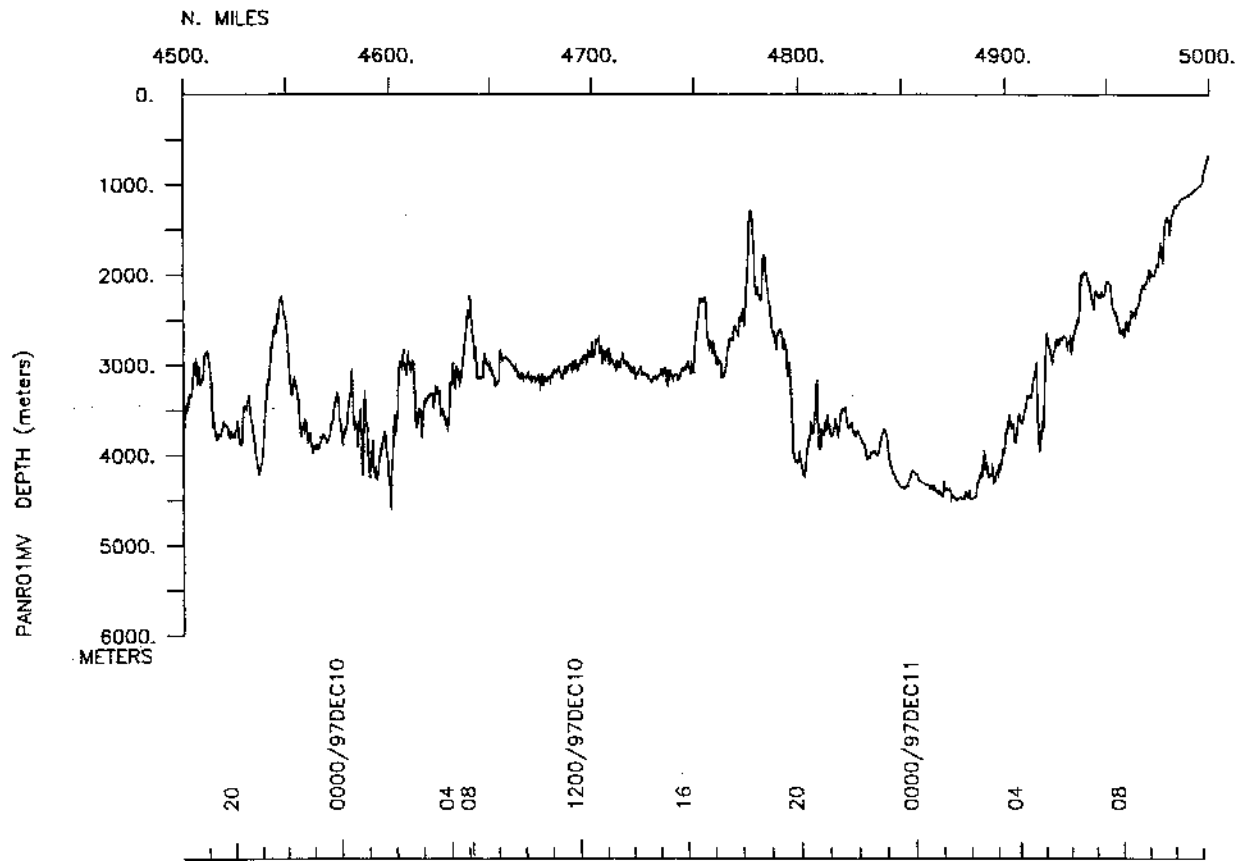
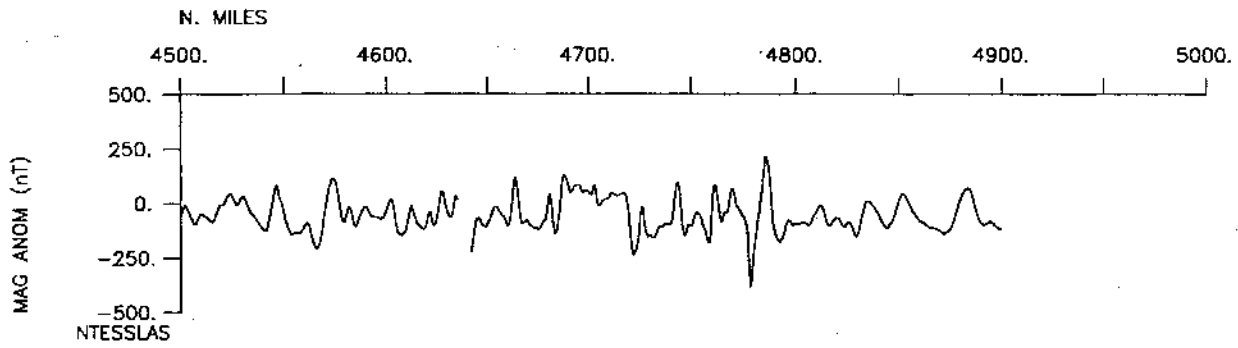
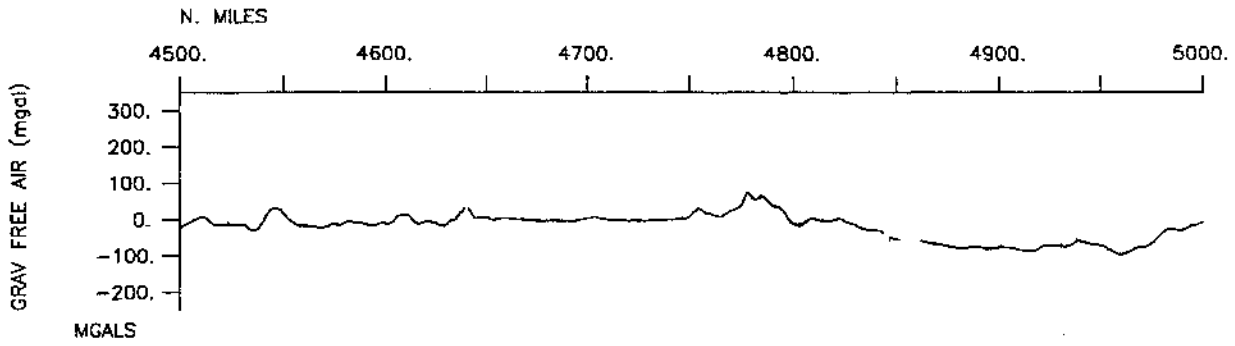


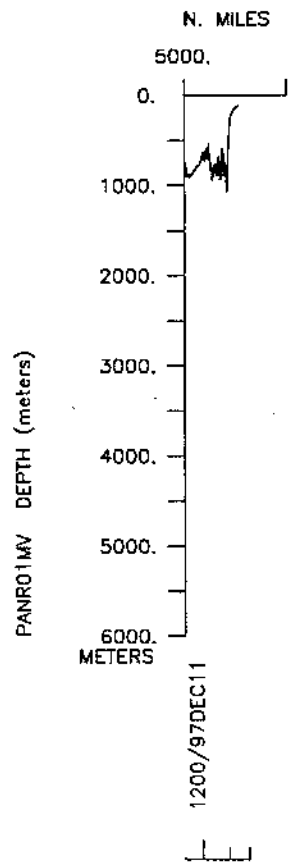
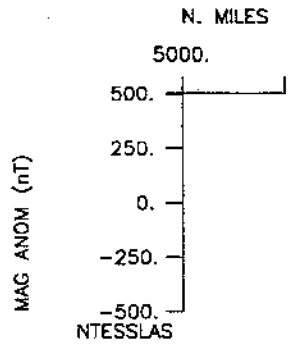
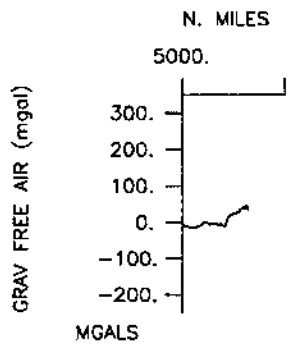












**S.I.O. SAMPLE INDEX**

**PANORAMA EXPEDITION**

**LEG 1**

**(PANR01MV)**

R/V Melville

(Issued April 1998)

**PORTS:**

San Diego, California (2 November 1997)

to

Acapulco, Mexico (11 December 1997)

**Chief Scientist:**

Charles Langmuir, Lamont-Doherty Earth Observatory

*The Sample Index is a first level interdisciplinary listing of time, position, sample identification and disposition of all samples, records and measurements collected on this cruise leg. The index data are encoded at sea by the resident marine technician and processed on shore by the S.I.O. Geological Data Center shortly after the completion of the cruise leg.*

*Positions are interpolated on the basis of sample time by comparison to a single, edited navigation file. Samples beginning at one time and position and ending at another are entered on two consecutive lines. Disposition and sample type are represented by three and four character codes to permit future computer searches on these parameters. (Listings defining these codes are available from the Geological Data Center.)*

GDC Cruise I.D.# 278

## \*\*\*\* Ports \*\*\*

2300	021197	LGPT B	San Diego, Ca.	32-43.00N	117-11.00W	f	PANR01MV
1414	111297	LGPT E	Acapulco, Mexico	16-51.00N	99-56.00W	f	PANR01MV

## \*\*\*\* Personnel \*\*\*

#	*****NAME*****	*****TITLE*****	*****AFFILIATION*****	**CRID**
PECS	LDEO Langmuir, Dr. C.	Chief Scientist	Lamont Doherty	PANR01MV
PECS	SIX Bender, Dr. J.	Co-Chief Scientist	U. of North Carolina	PANR01MV
PESP	LDEO Cormier, Dr. M.	Scientist	Lamont Doherty	PANR01MV
PESP	SIX Shirey, Dr. S.	Scientist	Carnegie DTM	PANR01MV
PESP	CCS Forsythe, Dr. L.	Scientist	CICESE, Mexico	PANR01MV
PERT	STS Comer, R. L.	Resident Tech.	Scripps Institution	PANR01MV
PECT	STS Moe, R.	Computer Engineer	Scripps Institution	PANR01MV
PESP	STS Peckman, U.	Seabeam Processor	Scripps Institution	PANR01MV
PESP	LDEO Sapp, K. A.	Geologic Tech.	Lamont Doherty	PANR01MV
PESP	LDEO Hanley, J.	Technician	Lamont Doherty	PANR01MV
PEXN	SIX Zavala, K.	Undergrad Student	U. of No. Ariz.	PANR01MV
PEXN	CCS Escalona-Alcazar, F.	Grad. Student	CICESE, Mexico	PANR01MV
PEST	LDEO Donnelly, K.	Grad. Student	Lamont Doherty	PANR01MV
PEST	SIX Balzer, V.	Grad. Student	U. of Kansas	PANR01MV
PEST	LDEO Lagatta, A.	Grad. Student	Lamont Doherty	PANR01MV
PEST	SIX Priest, B.	Undergrad Student	U. of North Carolina	PANR01MV
PEST	SIX Simon, A.	Grad. Student	SUNY (Stony Brook)	PANR01MV
PEST	LDEO Su, Y.	Grad. Student	Lamont Doherty	PANR01MV
PESP	STS deMoustier, Dr. C.	Scientist	Scripps Institution	PANR01MV
PEET	STS Palomares, R.	Electronic Tech.	Scripps Institution	PANR01MV
PESP	SIX Ingram, M.	Seabeam Tech.	SEATEX	PANR01MV

## \*\*\*\* NOTES \*\*\*

#An 'X' in the (B)egin/(E)nd column following the sample code indicates no  
#sample or data recovered. A 'C' indicates continuation of data collection  
#from before the beginning or after the end of a particular leg. (Moored  
#bottom instruments, for example.) The number appearing in the columns  
#between the sample identifier and the disposition code, for many sample  
#entries, is the water depth in corrected meters.

#GMT	DDMMYY	SAMP	B	SAMPLE	DISP		p	CRUISE
#TIME	DATE	TZ	CODE	E. IDENTIFIER	CODE	LATITUDE	LONGITUDE	c LEG-SHIP
#-----	-----	---	---	-----	---	-----	-----	-----

\*\*\*\* Underway Data Curator - S. M. Smith ext. 42752 \*\*\*\*

## \*\*\*\* Log Books \*\*\*

2340	021197	0	LBUW	B	Underway watch Log	GDC	32-37.34N	117-17.01W	g	PANR01MV
1414	111297	0	LBUW	E	Underway watch log	GDC	16-50.89N	99-54.21W	g	PANR01MV
0800	031197	0	LBSC	B	Sample&Science log	LDEO	31-49.03N	119-07.21W	g	PANR01MV
0800	111297	0	LBSC	E	Sample&Science log	LDEO	16-57.51N	101-07.97W	g	PANR01MV

#GMT	DDMMYY	SAMP	B	SAMPLE	DISP				p	CRUISE
#TIME	DATE	TZ	CODE	E IDENTIFIER	CODE	LATITUDE	LONGITUDE		c	LEG-SHIP
#-----	-----	---	---	-----	---	-----	-----	---	---	-----
**** Digital Magnetics (Earth Total Field) ****										
0151	071197	0	MGRA	B Magnetics	GDC	22-16.77N	108-30.80W	g		PANR01MV
0315	111297	0	MGRA	E Magnetics	GDC	17-05.37N	102-08.42W	g		PANR01MV
**** Digital Gravity ****										
2300	021197	0	GVCR	B Gravity	GDC	32-41.11N	117-14.75W	g		PANR01MV
1414	111297	0	GVCR	E Gravity	GDC	16-50.89N	99-54.21W	g		PANR01MV
**** Sea Beam Records (vertical beam and side scan) ****										
0315	071197	0	MBSR	B v.beam&sscan r-01	GDC	22-15.38N	108-28.45W	g		PANR01MV
1623	071197	0	MBSR	E v.beam&sscan r-01	GDC	20-58.32N	107-53.86W	g		PANR01MV
1628	071197	0	MBSR	B v.beam&sscan r-02	GDC	20-57.42N	107-53.26W	g		PANR01MV
1320	111297	0	MBSR	E v.beam&sscan r-02	GDC	16-48.21N	99-56.59W	g		PANR01MV
**** Satellite Intercomparison for Marine Biology and Aerosol Determination- Cal Space ****										
2240	041197	0	NEXX	B SIMBAD Sta. 1-20	SIO	28-41.45N	116-52.36W	g		PANR01MV
2053	101297	0	NEXX	E SIMBAD Sta. 1-20	SIO	17-08.25N	103-37.54W	g		PANR01MV
**** Echo Sounder Records ****										
0237	071197	0	DPR3	B Knudsen 3.5khz r-01	GDC	22-16.56N	108-30.30W	g		PANR01MV
1114	201197	0	DPR3	E Knudsen 3.5khz r-01	GDC	15-40.44N	105-42.09W	g		PANR01MV
1117	201197	0	DPR3	B Knudsen 3.5khz r-02	GDC	15-40.43N	105-42.08W	g		PANR01MV
0635	021297	0	DPR3	E Knudsen 3.5khz r-02	GDC	16-21.07N	105-24.75W	g		PANR01MV
0635	021297	0	DPR3	B Knudsen 3.5khz r-03	GDC	16-21.07N	105-24.75W	g		PANR01MV
1320	111297	0	DPR3	E Knudsen 3.5khz r-03	GDC	16-48.21N	99-56.59W	g		PANR01MV
**** MAPR (Miniature Autonomous Plume Recorder) ****										
0140	071197	0	NEXX	B Rock Core Sta./MAPR	LDEO	22-16.76N	108-30.79W	g		PANR01MV
0047	181197	0	NEXX	E 1-18,21,23-52,54-55	LDEO	15-41.97N	105-26.80W	g		PANR01MV
0219	181197	0	NEXX	B Rock Core Sta./MAPR	LDEO	15-38.40N	105-25.10W	g		PANR01MV
2330	031297	0	NEXX	E 57-65,67-91,96-116	LDEO	16-37.10N	106-26.90W	g		PANR01MV
0136	041197	0	NEXX	B Dredge Sta./MAPR 1-2	LDEO	31-33.00N	119-28.00W	g		PANR01MV
1026	261197	0	NEXX	E 4-7,9-14,16-22,24-54	LDEO	15-35.48N	105-51.39W	g		PANR01MV
0816	281197	0	NEXX	B Dredge Sta./MAPR 58,	LDEO	15-16.31N	105-12.07W	g		PANR01MV
1425	031297	0	NEXX	E 61-65,72-73,75-77	LDEO	16-56.00N	105-25.41W	g		PANR01MV

#GMT	DDMMYY	SAMP	B	SAMPLE	DISP				p	CRUISE
#TIME	DATE	TZ	CODE	E IDENTIFIER	CODE	LATITUDE	LONGITUDE		c	LEG-SHIP
#										
*** Cores ***										
0140	071197	0	CORG	Glass Core	1	2980M	LDEO 22-16.76N	108-30.79W	g	PANR01MV
0853	071197	0	CORG	Glass Core	2	3016M	LDEO 22-08.98N	108-32.50W	g	PANR01MV
1215	081197	0	CORG	X Glass Core	3	2833M	LDEO 18-25.75N	106-16.19W	g	PANR01MV
1405	081197	0	CORG	Glass Core	4	2762M	LDEO 18-21.24N	106-16.67W	g	PANR01MV
1558	081197	0	CORG	Glass Core	5	2784M	LDEO 18-16.05N	106-17.64W	g	PANR01MV
2132	081197	0	CORG	Glass Core	6	2701M	LDEO 18-07.97N	106-18.00W	g	PANR01MV
2324	081197	0	CORG	Glass Core	7	2704M	LDEO 18-03.88N	106-17.99W	g	PANR01MV
0215	091197	0	CORG	Glass Core	8	3048M	LDEO 17-55.06N	106-15.80W	g	PANR01MV
1139	091197	0	CORG	X Glass Core	9	3406M	LDEO 17-49.07N	106-01.48W	g	PANR01MV
1338	091197	0	CORG	Glass Core	10	3361M	LDEO 17-49.80N	106-01.81W	g	PANR01MV
2215	091197	0	CORG	Glass Core	11	3002M	LDEO 17-56.54N	105-37.03W	g	PANR01MV
0004	101197	0	CORG	Glass Core	12	3070M	LDEO 17-52.41N	105-34.50W	g	PANR01MV
0205	101197	0	CORG	Glass Core	13	3068M	LDEO 17-47.40N	105-31.79W	g	PANR01MV
0404	101197	0	CORG	Glass Core	14	2943M	LDEO 17-42.50N	105-28.79W	g	PANR01MV
1004	101197	0	CORG	Glass Core	15	2853M	LDEO 17-33.00N	105-26.21W	g	PANR01MV
1200	101197	0	CORG	Glass Core	16	2848M	LDEO 17-28.01N	105-25.18W	g	PANR01MV
1512	101197	0	CORG	Glass Core	17	2800M	LDEO 17-23.01N	105-24.76W	g	PANR01MV
1659	101197	0	CORG	Glass Core	18	2795M	LDEO 17-17.98N	105-24.12W	g	PANR01MV
2330	101197	0	CORG	Glass Core	19	2698M	LDEO 17-08.02N	105-23.70W	g	PANR01MV
0133	111197	0	CORG	Glass Core	20	2679M	LDEO 17-03.05N	105-23.15W	g	PANR01MV
0316	111197	0	CORG	Glass Core	21	2677M	LDEO 16-59.18N	105-22.53W	g	PANR01MV
0528	111197	0	CORG	Glass Core	22	2718M	LDEO 16-53.01N	105-21.59W	g	PANR01MV
1201	111197	0	CORG	Glass Core	23	2680M	LDEO 16-44.02N	105-21.48W	g	PANR01MV
1338	111197	0	CORG	Glass Core	24	2701M	LDEO 16-44.03N	105-20.76W	g	PANR01MV
1554	111197	0	CORG	Glass Core	25	2679M	LDEO 16-37.99N	105-20.39W	g	PANR01MV
1755	111197	0	CORG	Glass Core	26	2667M	LDEO 16-32.99N	105-19.00W	g	PANR01MV
0407	141197	0	CORG	Glass Core	27	2783M	LDEO 16-26.70N	105-14.27W	g	PANR01MV
0602	141197	0	CORG	Glass Core	28	2654M	LDEO 16-25.19N	105-18.50W	g	PANR01MV
0743	141197	0	CORG	Glass Core	29	2709M	LDEO 16-22.39N	105-18.19W	g	PANR01MV
0922	141197	0	CORG	Glass Core	30	2719M	LDEO 16-19.68N	105-18.80W	g	PANR01MV
1559	141197	0	CORG	Glass Core	31	2696M	LDEO 16-20.51N	105-25.02W	g	PANR01MV
2118	141197	0	CORG	Glass Core	32	2709M	LDEO 16-15.30N	105-25.40W	g	PANR01MV
2253	141197	0	CORG	Glass Core	33	2611M	LDEO 16-12.30N	105-25.60W	g	PANR01MV
0047	151197	0	CORG	Glass Core	34	2409M	LDEO 16-06.48N	105-26.11W	g	PANR01MV
0214	151197	0	CORG	Glass Core	35	2391M	LDEO 16-04.16N	105-26.37W	g	PANR01MV
0340	151197	0	CORG	Glass Core	36	2329M	LDEO 16-01.78N	105-26.45W	g	PANR01MV
0450	151197	0	CORG	Glass Core	37	2334M	LDEO 16-00.80N	105-26.49W	g	PANR01MV
0607	151197	0	CORG	Glass Core	38	2350M	LDEO 15-59.12N	105-26.67W	g	PANR01MV
0720	151197	0	CORG	Glass Core	39	2342M	LDEO 15-58.10N	105-26.60W	g	PANR01MV
0839	151197	0	CORG	Glass Core	40	2339M	LDEO 15-56.94N	105-26.45W	g	PANR01MV
0944	151197	0	CORG	Glass Core	41	2325M	LDEO 15-56.50N	105-26.60W	g	PANR01MV
1045	151197	0	CORG	Glass Core	42	2289M	LDEO 15-56.00N	105-26.49W	g	PANR01MV
1206	151197	0	CORG	Glass Core	43	2314M	LDEO 15-54.52N	105-26.62W	g	PANR01MV
1320	151197	0	CORG	Glass Core	44	2314M	LDEO 15-53.47N	105-26.48W	g	PANR01MV
1439	151197	0	CORG	Glass Core	45	2310M	LDEO 15-52.47N	105-26.48W	g	PANR01MV
1932	151197	0	CORG	Glass Core	46	2260M	LDEO 15-48.99N	105-25.75W	g	PANR01MV
2037	151197	0	CORG	Glass Core	47	2310M	LDEO 15-49.00N	105-26.10W	g	PANR01MV
2153	151197	0	CORG	Glass Core	48	2324M	LDEO 15-46.96N	105-25.07W	g	PANR01MV
2256	151197	0	CORG	Glass Core	49	2327M	LDEO 15-46.98N	105-26.02W	g	PANR01MV

#GMT #TIME #	DDMMYY DATE	SAMP TZ	B CODE	SAMPLE E IDENTIFIER	DISP CODE	LATITUDE	LONGITUDE	p c	CRUISE LEG-SHIP
0010	161197	0	CORG	Glass Core	50 2288M LDEO	15-46.98N	105-26.79W	g	PANR01MV
0128	161197	0	CORG	Glass Core	51 2268M LDEO	15-45.49N	105-27.38W	g	PANR01MV
0621	161197	0	CORG	Glass Core	52 2308M LDEO	15-43.97N	105-25.79W	g	PANR01MV
1150	161197	0	CORG	Glass Core	53 2317M LDEO	15-41.20N	105-25.52W	g	PANR01MV
1838	171197	0	CORG	Glass Core	54 2316M LDEO	15-42.01N	105-26.04W	g	PANR01MV
0047	181197	0	CORG	Glass Core	55 2357M LDEO	15-41.97N	105-26.80W	g	PANR01MV
0219	181197	0	CORG	Glass Core	56 2323M LDEO	15-38.40N	105-25.10W	g	PANR01MV
0346	181197	0	CORG	Glass Core	57 2330M LDEO	15-35.83N	105-23.34W	g	PANR01MV
1316	181197	0	CORG	Glass Core	58 2359M LDEO	15-35.40N	105-25.02W	g	PANR01MV
1455	181197	0	CORG	Glass Core	59 2320M LDEO	15-33.40N	105-23.94W	g	PANR01MV
1613	181197	0	CORG	Glass Core	60 2348M LDEO	15-31.48N	105-22.83W	g	PANR01MV
1734	181197	0	CORG	Glass Core	61 2462M LDEO	15-31.23N	105-24.54W	g	PANR01MV
1859	181197	0	CORG	Glass Core	62 2322M LDEO	15-30.33N	105-23.07W	g	PANR01MV
2042	181197	0	CORG	Glass Core	63 2407M LDEO	15-28.48N	105-23.42W	g	PANR01MV
0145	191197	0	CORG	Glass Core	64 2364M LDEO	15-28.69N	105-22.21W	g	PANR01MV
0344	191197	0	CORG	Glass Core	65 2392M LDEO	15-24.41N	105-21.47W	g	PANR01MV
0521	191197	0	CORG	Glass Core	66 2497M LDEO	15-22.40N	105-19.42W	g	PANR01MV
0659	191197	0	CORG	Glass Core	67 2727M LDEO	15-20.79N	105-17.20W	g	PANR01MV
1440	191197	0	CORG	Glass Core	68 2340M LDEO	15-35.84N	105-23.34W	g	PANR01MV
1724	191197	0	CORG	Glass Core	69 2324M LDEO	15-35.75N	105-24.54W	g	PANR01MV
1939	191197	0	CORG	Glass Core	70 2359M LDEO	15-35.40N	105-25.03W	g	PANR01MV
1411	261197	0	CORG	Glass Core	71 2266M LDEO	15-33.80N	105-48.09W	g	PANR01MV
0310	271197	0	CORG	Glass Core	72 1927M LDEO	15-37.07N	105-40.00W	g	PANR01MV
0438	271197	0	CORG	Glass Core	73 2266M LDEO	15-36.48N	105-36.80W	g	PANR01MV
0604	271197	0	CORG	Glass Core	74 2442M LDEO	15-36.77N	105-34.21W	g	PANR01MV
1217	271197	0	CORG	Glass Core	75 2601M LDEO	15-41.60N	105-30.36W	g	PANR01MV
1351	271197	0	CORG	Glass Core	76 2643M LDEO	15-44.10N	105-28.90W	g	PANR01MV
1504	271197	0	CORG	Glass Core	77 2185M LDEO	15-44.11N	105-27.81W	g	PANR01MV
1607	271197	0	CORG	Glass Core	78 2339M LDEO	15-44.11N	105-27.10W	g	PANR01MV
1751	271197	0	CORG	Glass Core	79 2282M LDEO	15-44.00N	105-26.60W	g	PANR01MV
1908	271197	0	CORG	Glass Core	80 2306M LDEO	15-43.97N	105-25.79W	g	PANR01MV
2025	271197	0	CORG	Glass Core	81 2310M LDEO	15-44.55N	105-25.89W	g	PANR01MV
2159	271197	0	CORG	Glass Core	82 2330M LDEO	15-43.99N	105-24.68W	g	PANR01MV
2318	271197	0	CORG	Glass Core	83 2238M LDEO	15-44.11N	105-23.60W	g	PANR01MV
2005	281197	0	CORG	Glass Core	84 3345M LDEO	15-16.39N	104-51.29W	g	PANR01MV
2158	281197	0	CORG	Glass Core	85 3477M LDEO	15-18.99N	104-52.19W	g	PANR01MV
2342	281197	0	CORG	Glass Core	86 3524M LDEO	15-21.20N	104-52.90W	g	PANR01MV
0425	291197	0	CORG	Glass Core	87 2400M LDEO	15-44.10N	105-24.24W	g	PANR01MV
1424	291197	0	CORG	Glass Core	88 2881M LDEO	15-46.86N	105-30.63W	g	PANR01MV
1547	291197	0	CORG	Glass Core	89 2832M LDEO	15-47.75N	105-31.64W	g	PANR01MV
0901	301197	0	CORG	Glass Core	90 2770M LDEO	15-54.01N	105-28.40W	g	PANR01MV
1029	301197	0	CORG	Glass Core	91 2366M LDEO	15-54.29N	105-27.40W	g	PANR01MV
1138	301197	0	CORG	Glass Core	92 2297M LDEO	15-54.21N	105-27.10W	g	PANR01MV
1237	301197	0	CORG	Glass Core	93 2318M LDEO	15-54.40N	105-26.90W	g	PANR01MV
1429	301197	0	CORG	Glass Core	94 2759M LDEO	16-01.40N	105-25.00W	g	PANR01MV
1532	301197	0	CORG	Glass Core	95 2612M LDEO	16-01.09N	105-25.29W	g	PANR01MV
1633	301197	0	CORG	Glass Core	96 2473M LDEO	16-01.20N	105-25.65W	g	PANR01MV
1730	301197	0	CORG	Glass Core	97 2362M LDEO	16-01.30N	105-26.00W	g	PANR01MV
1837	301197	0	CORG	Glass Core	98 2367M LDEO	16-01.29N	105-27.09W	g	PANR01MV
1942	301197	0	CORG	Glass Core	99 2453M LDEO	16-01.30N	105-27.45W	g	PANR01MV
2215	301197	0	CORG	Glass Core	100 2690M LDEO	16-01.20N	105-27.90W	g	PANR01MV
2010	011297	0	CORG	Glass Core	101 2743M LDEO	16-02.08N	105-29.59W	g	PANR01MV
0309	021297	0	CORG	Glass Core	102 2651M LDEO	16-17.10N	105-25.70W	g	PANR01MV
1216	021297	0	CORG	Glass Core	103 2759M LDEO	16-55.97N	105-23.01W	g	PANR01MV
1332	021297	0	CORG	Glass Core	104 2705M LDEO	16-56.00N	105-22.00W	g	PANR01MV
1511	021297	0	CORG	Glass Core	105 2740M LDEO	16-59.84N	105-22.92W	g	PANR01MV
2048	021297	0	CORG	Glass Core	106 2785M LDEO	17-03.98N	105-24.82W	g	PANR01MV
2211	021297	0	CORG	Glass Core	107 2729M LDEO	17-04.00N	105-23.70W	g	PANR01MV
2318	021297	0	CORG	Glass Core	108 2772M LDEO	17-04.00N	105-23.40W	g	PANR01MV



#GMT	DDMMYY	SAMP	B	SAMPLE	DISP				p	CRUISE
#TIME	DATE	TZ	CODE	E IDENTIFIER	CODE	LATITUDE	LONGITUDE		c	LEG-SHIP
#	---	---	---	-----	---	---	---	---	---	---
0024	031297	0	CORG	Glass Core 109	2749M LDEO	17-04.00N	105-23.20W	g		PANR01MV
0137	031297	0	CORG	Glass Core 110	2771M LDEO	17-04.00N	105-22.81W	g		PANR01MV
0241	031297	0	CORG	Glass Core 111	2716M LDEO	17-04.00N	105-22.50W	g		PANR01MV
0401	031297	0	CORG	Glass Core 112	2736M LDEO	17-01.70N	105-22.90W	g		PANR01MV
1051	031297	0	CORG	Glass Core 113	2721M LDEO	16-56.00N	105-22.39W	g		PANR01MV
1148	031297	0	CORG	Glass Core 114	2799M LDEO	16-55.98N	105-23.80W	g		PANR01MV
1902	031297	0	CORG	Glass Core 115	2222M LDEO	16-44.50N	105-39.01W	g		PANR01MV
2330	031297	0	CORG	Glass Core 116	1471M LDEO	16-37.10N	106-26.90W	g		PANR01MV
1601	071297	0	CORG	Glass Core 117	1289M LDEO	16-10.72N	111-36.48W	g		PANR01MV

\*\*\* Dredges \*\*\*

0136	041197	0	DRRO	Rock Dredge 1	2869M LDEO	31-33.00N	119-28.00W	g		PANR01MV
0426	071197	0	DRRO	Rock Dredge 2	3149M LDEO	22-15.37N	108-28.45W	g		PANR01MV
0821	081197	0	DRRO	Rock Dredge 3	2998M LDEO	18-29.62N	106-15.31W	g		PANR01MV
1809	081197	0	DRRO	Rock Dredge 4	2698M LDEO	18-12.50N	106-17.85W	g		PANR01MV
0803	091197	0	DRRO	Rock Dredge 5	3296M LDEO	17-45.54N	106-00.10W	g		PANR01MV
1737	091197	0	DRRO	Rock Dredge 6	3064M LDEO	18-01.02N	105-41.52W	g		PANR01MV
0625	101197	0	DRRO	Rock Dredge 7	2859M LDEO	17-38.73N	105-27.59W	g		PANR01MV
1915	101197	0	DRRO	Rock Dredge 8	2801M LDEO	17-13.01N	105-23.96W	g		PANR01MV
0812	111197	0	DRRO	Rock Dredge 9	2745M LDEO	16-48.00N	105-21.89W	g		PANR01MV
2036	111197	0	DRRO	Rock Dredge 10	2640M LDEO	16-33.00N	105-12.99W	g		PANR01MV
0146	121197	0	DRRO	Rock Dredge 11	2240M LDEO	16-37.24N	105-01.77W	g		PANR01MV
1713	121197	0	DRRO	Rock Dredge 12	2453M LDEO	16-51.50N	103-55.71W	g		PANR01MV
2309	121197	0	DRRO	Rock Dredge 13	2076M LDEO	16-45.30N	104-20.93W	g		PANR01MV
0419	131197	0	DRRO	Rock Dredge 14	2315M LDEO	16-51.43N	104-29.80W	g		PANR01MV
0810	131197	0	DRRO	Rock Dredge 15	2271M LDEO	16-50.21N	104-28.26W	g		PANR01MV
1210	131197	0	DRRO	Rock Dredge 16	2766M LDEO	16-46.97N	104-28.30W	g		PANR01MV
1910	131197	0	DRRO	Rock Dredge 17	2652M LDEO	16-10.22N	104-30.17W	g		PANR01MV
1151	141197	0	DRRO	Rock Dredge 18	2761M LDEO	16-17.02N	105-19.38W	g		PANR01MV
1808	141197	0	DRRO	Rock Dredge 19	2702M LDEO	16-17.62N	105-25.21W	g		PANR01MV
1644	151197	0	DRRO	Rock Dredge 20	2319M LDEO	15-51.00N	105-26.50W	g		PANR01MV
0330	161197	0	DRRO	Rock Dredge 21	2325M LDEO	15-43.10N	105-24.41W	g		PANR01MV
0822	161197	0	DRRO	Rock Dredge 22	2317M LDEO	15-42.38N	105-25.69W	g		PANR01MV
1353	161197	0	DRRO	Rock Dredge 23	2375M LDEO	15-42.88N	105-26.89W	g		PANR01MV
0203	171197	0	DRRO	Rock Dredge 24	2677M LDEO	15-26.91N	105-15.86W	g		PANR01MV
0613	171197	0	DRRO	Rock Dredge 25	2707M LDEO	15-31.49N	105-16.95W	g		PANR01MV
1017	171197	0	DRRO	Rock Dredge 26	2525M LDEO	15-36.44N	105-17.88W	g		PANR01MV
1434	171197	0	DRRO	Rock Dredge 27	2778M LDEO	15-43.27N	105-19.72W	g		PANR01MV
2028	171197	0	DRRO	Rock Dredge 28	2198M LDEO	15-41.39N	105-27.66W	g		PANR01MV
0529	181197	0	DRRO	Rock Dredge 29	2332M LDEO	15-35.79N	105-24.52W	g		PANR01MV
2248	181197	0	DRRO	Rock Dredge 30	2348M LDEO	15-28.04N	105-22.73W	g		PANR01MV
0821	191197	0	DRRO	Rock Dredge 31	2960M LDEO	15-18.45N	105-15.20W	g		PANR01MV
2243	191197	0	DRRO	Rock Dredge 32	2562M LDEO	15-41.45N	105-33.20W	g		PANR01MV
0235	201197	0	DRRO	Rock Dredge 33	2850M LDEO	15-47.16N	105-31.99W	g		PANR01MV
0940	201197	0	DRRO	Rock Dredge 34	2920M LDEO	15-40.90N	105-42.31W	g		PANR01MV
1408	201197	0	DRRO	Rock Dredge 35	2172M LDEO	15-37.40N	105-40.80W	g		PANR01MV
1821	201197	0	DRRO	Rock Dredge 36	1584M LDEO	15-38.40N	105-48.81W	g		PANR01MV
2140	201197	0	DRRO	Rock Dredge 37	1843M LDEO	15-40.30N	105-52.69W	g		PANR01MV
0613	211197	0	DRRO	Rock Dredge 38	2869M LDEO	15-43.83N	105-56.89W	g		PANR01MV
1029	211197	0	DRRO	Rock Dredge 39	2695M LDEO	15-38.79N	106-03.04W	g		PANR01MV
1815	221197	0	DRRO	Rock Dredge 40	2006M LDEO	16-17.72N	109-02.25W	g		PANR01MV
2229	221197	0	DRRO	Rock Dredge 41	2544M LDEO	16-12.78N	108-58.03W	g		PANR01MV

#GMT	DDMMYY	SAMP	B	SAMPLE	DISP				p	CRUISE
#TIME	DATE	TZ	CODE	E IDENTIFIER	CODE	LATITUDE	LONGITUDE		c	LEG-SHIP
#										
0315	231197	0	DRRO	Rock Dredge 42	1300M LDEO	16-09.29N	108-44.01W	g		PANR01MV
1157	231197	0	DRRO	Rock Dredge 43	2457M LDEO	16-40.67N	108-20.03W	g		PANR01MV
1701	231197	0	DRRO	Rock Dredge 44	3002M LDEO	16-40.70N	108-09.51W	g		PANR01MV
0923	241197	0	DRRO	Rock Dredge 45	1923M LDEO	16-12.46N	106-30.03W	g		PANR01MV
1353	241197	0	DRRO	Rock Dredge 46	3096M LDEO	16-14.99N	106-19.30W	g		PANR01MV
1836	241197	0	DRRO	Rock Dredge 47	1909M LDEO	16-09.20N	106-17.90W	g		PANR01MV
2341	241197	0	DRRO	Rock Dredge 48	3105M LDEO	16-06.49N	106-07.20W	g		PANR01MV
0509	251197	0	DRRO	Rock Dredge 49	3099M LDEO	15-59.98N	105-57.91W	g		PANR01MV
0905	251197	0	DRRO	Rock Dredge 50	2632M LDEO	15-58.31N	105-54.11W	g		PANR01MV
1350	251197	0	DRRO	Rock Dredge 51	2728M LDEO	15-51.50N	105-42.17W	g		PANR01MV
1934	251197	0	DRRO	Rock Dredge 52	2698M LDEO	15-37.60N	106-02.40W	g		PANR01MV
0622	261197	0	DRRO	Rock Dredge 53	2698M LDEO	15-37.81N	105-54.88W	g		PANR01MV
1026	261197	0	DRRO	Rock Dredge 54	2465M LDEO	15-35.48N	105-51.39W	g		PANR01MV
1609	261197	0	DRRO	Rock Dredge 55	1531M LDEO	15-36.98N	105-45.71W	g		PANR01MV
2000	261197	0	DRRO	Rock Dredge 56	2660M LDEO	15-34.18N	105-41.87W	g		PANR01MV
0005	271197	0	DRRO	Rock Dredge 57	2129M LDEO	15-36.30N	105-40.21W	g		PANR01MV
0708	271197	0	DRRO	Rock Dredge 58	2760M LDEO	15-40.56N	105-32.56W	g		PANR01MV
0359	281197	0	DRRO	Rock Dredge 59	2576M LDEO	15-15.90N	105-25.00W	g		PANR01MV
0942	281197	0	DRRO	Rock Dredge 60	1950M LDEO	15-16.82N	105-06.68W	g		PANR01MV
1442	281197	0	DRRO	Rock Dredge 61	3398M LDEO	15-14.79N	104-51.00W	g		PANR01MV
0626	291197	0	DRRO	Rock Dredge 62	2739M LDEO	15-44.09N	105-22.18W	g		PANR01MV
1053	291197	0	DRRO	Rock Dredge 63	2415M LDEO	15-48.82N	105-26.09W	g		PANR01MV
1754	291197	0	DRRO	Rock Dredge 64	2992M LDEO	15-49.15N	105-33.09W	g		PANR01MV
2225	291197	0	DRRO	Rock Dredge 65	2947M LDEO	15-53.16N	105-32.29W	g		PANR01MV
0206	301197	0	DRRO	Rock Dredge 66	2889M LDEO	15-54.00N	105-30.70W	g		PANR01MV
0553	301197	0	DRRO	Rock Dredge 67	2978M LDEO	15-53.50N	105-29.90W	g		PANR01MV
0042	011297	0	DRRO	Rock Dredge 68	2821M LDEO	15-54.30N	105-28.30W	g		PANR01MV
0435	011297	0	DRRO	Rock Dredge 69	2313M LDEO	15-54.00N	105-26.60W	g		PANR01MV
0825	011297	0	DRRO	Rock Dredge 70	2441M LDEO	16-01.00N	105-26.50W	g		PANR01MV
1239	011297	0	DRRO	Rock Dredge 71	2871M LDEO	16-01.00N	105-23.99W	g		PANR01MV
1649	011297	0	DRRO	Rock Dredge 72	2686M LDEO	16-01.20N	105-29.29W	g		PANR01MV
2219	011297	0	DRRO	Rock Dredge 73	2730M LDEO	16-01.80N	105-31.01W	g		PANR01MV
0529	021297	0	DRRO	Rock Dredge 74	2802M LDEO	16-21.90N	105-24.61W	g		PANR01MV
1740	021297	0	DRRO	Rock Dredge 75	2990M LDEO	17-03.99N	105-26.50W	g		PANR01MV
0633	031297	0	DRRO	Rock Dredge 76	2771M LDEO	17-04.58N	105-23.43W	g		PANR01MV
1425	031297	0	DRRO	Rock Dredge 77	2881M LDEO	16-56.00N	105-25.41W	g		PANR01MV
0120	041297	0	DRRO	Rock Dredge 78	2024M LDEO	16-37.60N	106-25.00W	g		PANR01MV
0731	041297	0	DRRO	Rock Dredge 79	3847M LDEO	16-16.99N	106-51.30W	g		PANR01MV
1657	041297	0	DRRO	Rock Dredge 80	3064M LDEO	16-34.50N	107-48.50W	g		PANR01MV
2148	041297	0	DRRO	X Rock Dredge 81	2510M LDEO	16-36.50N	107-56.70W	g		PANR01MV
0348	051297	0	DRRO	Rock Dredge 82	2613M LDEO	16-12.40N	108-18.00W	g		PANR01MV
0854	051297	0	DRRO	Rock Dredge 83	927M LDEO	16-05.00N	108-41.50W	g		PANR01MV
1410	051297	0	DRRO	Rock Dredge 84	2622M LDEO	16-30.20N	108-42.00W	g		PANR01MV
1921	051297	0	DRRO	Rock Dredge 85	2000M LDEO	16-27.48N	108-56.59W	g		PANR01MV
0028	061297	0	DRRO	Rock Dredge 86	2640M LDEO	16-15.50N	109-16.70W	g		PANR01MV
0430	061297	0	DRRO	Rock Dredge 87	969M LDEO	16-13.80N	109-21.00W	g		PANR01MV
2209	061297	0	DRRO	Rock Dredge 88	3800M LDEO	14-53.90N	110-45.21W	g		PANR01MV
0419	071297	0	DRRO	X Rock Dredge 89	1581M LDEO	15-19.00N	110-54.50W	g		PANR01MV
1321	071297	0	DRRO	Rock Dredge 90	1741M LDEO	16-06.02N	111-37.00W	g		PANR01MV
0418	081297	0	DRRO	Rock Dredge 91	3181M LDEO	17-51.99N	111-02.94W	g		PANR01MV
1111	081297	0	DRRO	Rock Dredge 92	3689M LDEO	18-08.98N	111-01.09W	g		PANR01MV
0530	101297	0	DRRO	Rock Dredge 93	2488M LDEO	16-35.10N	106-24.70W	g		PANR01MV

# End Sample Index PANR01MV